



QAD Adaptive Applications  
Enterprise Edition

# Installation Guide

# QAD Automation Solutions:

# Warehouse Extension

Introduction  
Installation

70-3432-010  
Version 1.0  
QAD Enterprise Applications Enterprise Edition 2019  
January 2020

This document contains proprietary information that is protected by copyright and other intellectual property laws. No part of this document may be reproduced, translated, or modified without the prior written consent of QAD Inc. The information contained in this document is subject to change without notice.

QAD Inc. provides this material as is and makes no warranty of any kind, expressed or implied, including, but not limited to, the implied warranties of merchantability and fitness for a particular purpose. QAD Inc. shall not be liable for errors contained herein or for incidental or consequential damages (including lost profits) in connection with the furnishing, performance, or use of this material whether based on warranty, contract, or other legal theory.

This document contains trademarks owned by QAD Inc. and other companies.

Copyright © 2020 by QAD Inc.

AS\_Warehouse\_Extension\_IG\_v010.pdf/r9m

**QAD Inc.**

100 Innovation Place  
Santa Barbara, California 93108  
Phone (805) 566-6000  
<https://www.qad.com>

# Contents

**AS Warehouse Extension Installation Guide Change Summary . . . . .v**

**Chapter 1 Introduction . . . . .1**

- Overview . . . . .2
  - Integration with Other QAD Solutions . . . . .2
  - Benefits . . . . .2
  - Base and Advanced Functionality . . . . .2
- Requirements . . . . .3
  - Software and Environment . . . . .3
  - Installation Time . . . . .3
  - Installation Package . . . . .3
- AS Warehouse Extension Packages . . . . .3
  - Installation Guide . . . . .4
- Patches and Customized Programs . . . . .4

**Chapter 2 Installation . . . . .5**

- Overview . . . . .6
- Pre-Installation Procedure . . . . .6
- Installation Procedure . . . . .6
  - Installation Steps . . . . .7
- Verify the Installation . . . . .17
- Post-installation Tasks . . . . .17
  - Merge Existing Patches and Customizations . . . . .18
  - Loading Field Help . . . . .18
  - Restart Anti-virus . . . . .18



# AS Warehouse Extension Installation Guide Change Summary

## Product Name Changes

Starting in September 2019, the new name for QAD’s complete portfolio of products is QAD Adaptive Applications. Additionally, QAD Adaptive ERP is the new name for QAD’s flagship ERP solution. QAD Adaptive ERP includes the functionality previously associated with QAD Cloud ERP and QAD Enterprise Applications - Enterprise Edition, plus the QAD Enterprise Platform and Adaptive UX which resulted from the Channel Islands program. Going forward, the terms QAD Enterprise Applications, QAD Cloud ERP, and Channel Islands will be deprecated but will remain in previous documentation and training materials. QAD’s intention is to—as soon as possible—eliminate the use of the deprecated terms going forward.

## Change Summary

The following table summarizes significant differences between this document and previous versions.

Date/Version	Description	Reference
January 2020/v1.0	Initial Release	--



# Introduction

This chapter discusses the following AS Warehouse Extension installation topics:

**Overview** 2

**Requirements** 3

**AS Warehouse Extension Packages** 3

**Patches and Customized Programs** 4

# Overview

QAD Automation Solutions: Warehouse Extension works alongside QAD Enterprise Edition to extend the warehouse management capabilities in Automation Solutions. The solution provides the framework to design the warehouse layout and control the movement and storage of the material in the warehouse.

## Integration with Other QAD Solutions

While not available in the legacy QAD Warehousing, the AS Warehouse Extension provides integration with the following:

- Serialization, which is now native in QAD EE (2016 and above)
- Production Orders
- QAD Automation Solutions: Data Collection

## Benefits

The AS Warehouse Extension provides clear warehousing definitions for various manufacturing and distribution environments by:

- Enabling seamless implementation by remaining non-invasive towards existing schema
- Providing a scalable solution that can handle the complexities of several multi-site warehouses down to the simplicity of a single-site warehouse
- Improving Automation Solutions to meet the customers' requirements in complex warehousing and material handling processes by providing a deeper system organization of a physical warehouse
- Improving space and labor utilization
- Minimizing the total travel distance in the warehouse while performing inventory movements
- Enabling users to record large and small-scale activity
- Minimizing administration intervention

## Base and Advanced Functionality

The AS Warehouse Extension is made up of a base and advanced functionality. Base functionality includes extended layout functions that allow you to define a physical warehouse on a very detailed level. Advanced functionality includes event management, putaway and picking logic, and a rules engine and KPI reporting.

<b>Base</b>	<b>Advanced</b>
Layout and simple capacity	Layout and robust capacity
Item layout associations	Item layout associations
	Material routing and algorithms
	Request programs
	Event/task status, history, metrics



## Requirements

The following sections describe the software and environment and other requirements to install AS Warehouse Extension.

### Software and Environment

The following software must be installed and active to install AS Warehouse Extension:

- QAD Integrated Customization Toolkit (ICT) v3.0 or later (Runtime license)
- Serialization, Item Attributes, and Quality Control (SAQ) v2.7.1 or later
- QAD Automation Solutions: Data Collection v3.0.0.0 or later
- QAD Automation Solutions: Label Print v3.0.0.0 or later
- QAD Enterprise Edition 2017 with SAQ v2.7.1 or later

### Installation Time

The estimated time to install AS Warehouse Extension into the target environment is 6-8 hrs. The estimated downtime to install the custdb and custom schema is 2-4 hrs.

### Installation Package

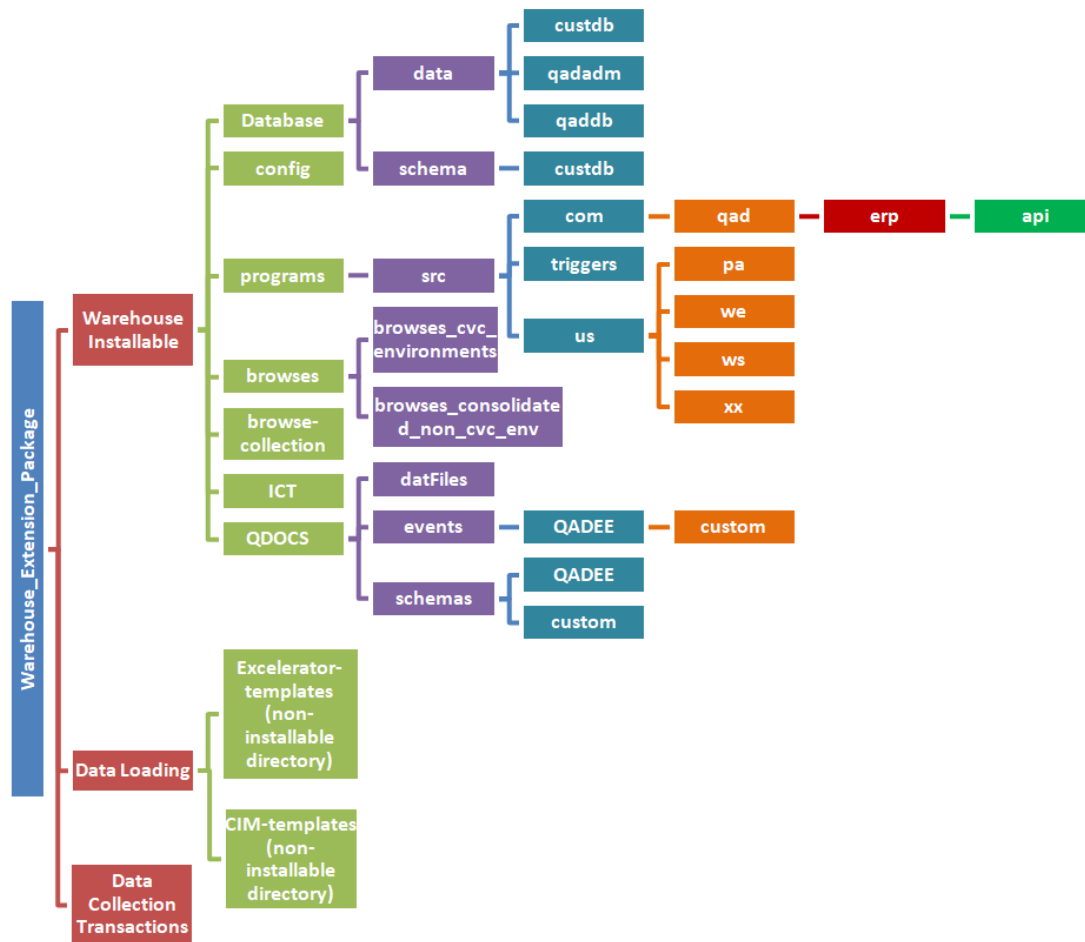
The AS Warehouse Extension package is offered through QAD Services and is not available in the QAD Store. To install AS Warehouse Extension package, contact QAD Services.

## AS Warehouse Extension Packages

The following installation packages contain all the components to install AS Warehouse Extension:

- Warehouse Extension Base package
- Warehouse Extension Package (Base + Advanced)

Fig. 1.1  
AS Warehouse Extension - Overall Package Structure



## Installation Guide

The *QAD Automation Solutions: Warehouse Extension Installation Guide* can be found in the QAD document library:

<http://documentlibrary.qad.com/>

**Note** This installation guide describes how to install both the Base and Advanced installation packages. Most of the instructions are the same when installing the Base or Advanced packages. In the few instances where the instructions are different, it is clearly noted.

## Patches and Customized Programs

This package contains modifications to QAD programs. If you have made customizations to QAD programs, it is **your** responsibility to merge your customizations with the modifications included in this package.

# Installation

This chapter describes how to install QAD Automation Solutions: Warehouse Extension.

**Overview** 6

**Pre-Installation Procedure** 6

**Installation Procedure** 6

**Verify the Installation** 17

**Post-installation Tasks** 17

## Overview

The following sections describe how to install QAD Automation Solutions: Warehouse Extension and how to configure the product after installation.

**Important** The instructions in this chapter describe how to install both the Base and Advanced installation packages. Most of the instructions are the same when installing the Base or Advanced packages. In the few instances where the instructions are different, it is clearly noted.

## Pre-Installation Procedure

Perform the following actions before installing the AS Warehouse Extension package.

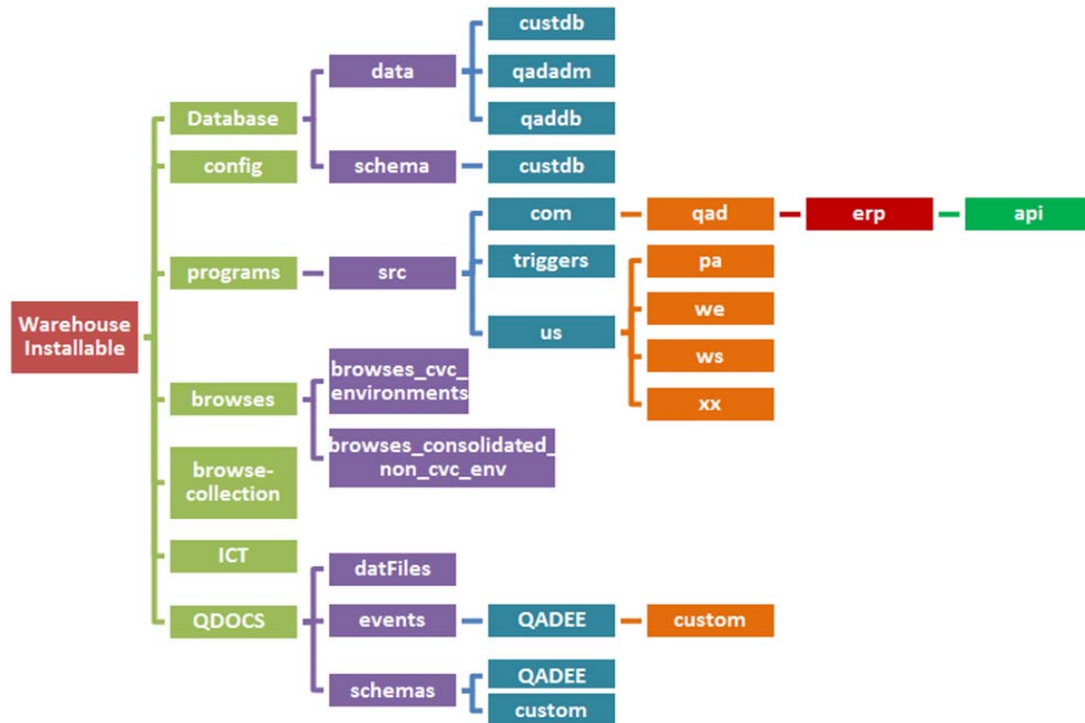
- 1 Search the QAD Support KnowledgeBase (<http://www.qad.com/erp/Support/>) for any known issues related to WHS installation. If you find any issues, follow the instructions in the KnowledgeBase in addition to the instructions in this guide.
- 2 Back up your databases and supporting environments. This includes backing up your mfg and admin “empty” databases.
- 3 Back up the `controllers.xml` file located in your `PROPATH`.

## Installation Procedure

**Important** To install AS Warehouse Extension, you must use YAB. Before proceeding, ensure that you are familiar with YAB commands. See the *QAD Configuration and Administration Guide* for more information.

The following graphic shows the AS Warehouse installable package structure.

**Fig. 2.1**  
AS Warehouse Extension - Installable Package Structure



## Installation Steps

### Verify Custom Database Exists

- 1 Verify that the custom database (custdb.st) exists. To verify that the custom database exists, enter the following YAB command:

```
yab config db.custdb.structurefile
```

**Fig. 2.2**  
Verify Structure File Path

```
[mfg@vml1lab0001 systest]$ yab config db.custdb.structurefile
db.custdb.structurefile=/dr01/qadapps/systest/build/work/st-files/custdb.st
BUILD SUCCESSFUL (0.617 s)
```

**Note** If the custom database does not exist, see “Installing a Custom Database” on page 8 to create the custom database.

- 2 You might want to change the path of the entries that will be added to the custdb structure file, depending upon the existing entries mentioned in the custdb.st file. See the example below.

**Fig. 2.3**  
Changing File Path

```

b /dr01/qadapps/systest/databases/custdb.b1 f 131072
b /dr01/qadapps/systest/databases/custdb.b2
#
d "Schema Area":6,64;1 /dr01/qadapps/systest/databases/custdb.d1 f 10240
d "Schema Area":6,64;1 /dr01/qadapps/systest/databases/custdb.d2
#
d "ADMIN":7,64;64 /dr01/qadapps/systest/databases/custdb_7.d1 f 102400
d "ADMIN":7,64;64 /dr01/qadapps/systest/databases/custdb_7.d2
#
d "ADMIN_IDX":8,1;8 /dr01/qadapps/systest/databases/custdb_8.d1 f 76800
d "ADMIN_IDX":8,1;8 /dr01/qadapps/systest/databases/custdb_8.d2
#
d "ADMIN_LOB":9,64;64 /dr01/qadapps/systest/databases/custdb_9.d1 f 76800
d "ADMIN_LOB":9,64;64 /dr01/qadapps/systest/databases/custdb_9.d2
#
d "AUDIT_DATA":80,64;64 /dr01/qadapps/systest/databases/custdb_80.d1 f 5120
d "AUDIT_DATA":80,64;64 /dr01/qadapps/systest/databases/custdb_80.d2
#
d "AUDIT_IDX":81,1;8 /dr01/qadapps/systest/databases/custdb_81.d1 f 5120
d "AUDIT_IDX":81,1;8 /dr01/qadapps/systest/databases/custdb_81.d2
#
d "WHSE":20,64;64 /dr01/qadapps/systest/databases/custdb_20.d1 f 102400
d "WHSE":20,64;64 /dr01/qadapps/systest/databases/custdb_20.d2
#
d "WHSE_IDX":21,1;8 /dr01/qadapps/systest/databases/custdb_21.d1 f 76800
d "WHSE_IDX":21,1;8 /dr01/qadapps/systest/databases/custdb_21.d2

```

## Database Directory

The Database directory contains sub-directories with the schema and data to be deployed in the environment.

### Installing a Custom Database

If the custom database (custdb.st) does not exist, follow these steps to install it:

- 1 Determine the path for the structure files by entering the following yab command:  

```
yab config -all | grep structurefile
```
- 2 In the Database/schema directory, load the whs-addst.st structure file.  
The whs-addst.st file extends the existing structure of the custom database. The Area numbers in the structure file are 20 and 21 with the assumption that these numbers are not used. If these Area numbers are used, it should be changed to a suitable number.
- 3 Create a structure file with the name custdb.st. Add the contents of whs-addst.st to the end of custdb.st.
- 4 Add the necessary "Area" information. The Area size numbers '102400' and '76800' have been provided. Use standard Area size numbers.
- 5 Create the schema and custdb directories under <.../customizations>:  

```
<.../customizations/schema/custdb>
```

- 6 Add the following entries to the `configuration.properties` file:
- a Locate the `configuration.properties` file, which is located in the following directory: `<.../.../.../build/config/>`.
  - b Add the schema directory for `custdb` where `<.../.../.../schema/custdb>` is the path for the directory created in step 5.
 

```
schema.customization-custdb.dir=<.../.../.../schema/custdb>
schema.customization-custdb.database=db.custdb
schema.customization-custdb.direct=true
data.customizations-default-dotd-custdb.dir=
<.../.../.../customizations/mfg/default/data/custdb>
# @grouporder 2 customizations-work customizations-default
code.mfg-customizations.propath=
```
  - c Set the `custdb` in `propath`:
 

```
code.mfg-customizations.databases=${code.mfg.databases},db.custdb
```
- 7 Verify that the setup was successful by entering the following `yab` command:
- ```
yab config schema.customization-custdb.*
```
- This command gives the following output. The directory structure `</dr01/qadapps...>` will be different depending on your database structure.

**Fig. 2.4**  
Verify Schema Load Setup

```
[mfg@vml1ab0001 databases]$ yab config schema.customization-custdb.*
schema.customization-custdb.database=db.custdb
schema.customization-custdb.dir=/dr01/qadapps/systest/customizations/schema/custdb
schema.customization-custdb.direct=true
BUILD SUCCESSFUL (0.574 s)
```

- 8 Enter the following `yab` commands to create a custom database:
- ```
yab database-custdb-rebuild
yab reconfigure
yab restart
```

### Custdb Directory

The `Database/schema/custdb` directory contains table definitions and the `_seqdefs.df` sequence file. The Base installation package contains 24 table definitions. The Advanced installation package contains 48 table definitions.

Follow these steps to place the schema in the `custdb` directory:

- 1 Locate the `configuration.properties` file in the environment.
- 2 Append additional entries from the `configuration.properties` file provided in the `Database/schema` directory of the package after doing the necessary adjustment to the paths.
- 3 Verify the schema load setup by entering the following YAB command:
 

```
yab config schema.customization-custdb.*
```

Fig. 2.5

Verify Schema Load Setup

```
[mfg@vml1lab0001 databases]$ yab config schema.customization-custdb.*
schema.customization-custdb.database=db.custdb
schema.customization-custdb.dir=/dr01/qadapps/systest/customizations/schema/custdb
schema.customization-custdb.direct=true
BUILD SUCCESSFUL (0.574 s)
```

4 Add the schema (DF files, Sequences) to the `custdb` directory.

a Go to directory `/. . . . /customizations/schema/custdb`.

b Place the contents of the `custdb` directory:

```
yab stop
prostrct add <custdb_physical_name> whse-addst.st
yab database-custdb-schema-update
yab start
```

### Data Directory

The Database/data directory contains the `qadadb`, `qadadm`, and `custdb` sub-directories, which contain data files (.d) that must be loaded into their respective databases using standard YAB commands.

**Important** The data load must be performed according to release management processes. Please treat this instruction as an advisory for YAB env without CVC.

- **Base Installation:** Update the `code_mstr.d` and `wtskt_mstr.d` files by replacing `<REPLACE_DOMAIN>` with the actual domain name. Repeat this step for each required domain and concatenate both file instances to have all records for all domains in the individual files (`code_mstr.d` and `wtskt_mstr.d`).
- **Advanced Installation:** Update the `code_mstr.d`, `wma_mstr.d`, `wtskt_mstr.d`, `wtt_mstr.d`, and `wmalt_mstr.d` files by replacing `<REPLACE_DOMAIN>` with the actual domain name. Repeat this step for each required domain and concatenate both file instances to have all records for all domains in the individual files (`code_mstr.d`, `wma_mstr.d`, `wtskt_mstr.d`, `wtt_mstr.d`, and `wmalt_mstr.d`).

**Note** If any of the files above already exist, it is recommended that you merge the contents instead of overwriting them so that you are better prepared if there is a need in the future to re-create the database and re-load all the custom data.

1 Run the following YAB commands to load the data files:

For `qadadb` database

```
yab database-qadadb-data-dotd-update -data.customizations-default-dotd-qadadb.regenerateoids:true -v
```

For `qadadm` database

```
yab database-qadadm-data-dotd-update -data.customizations-default-dotd-qadadm.regenerateoids:true -v
```

For `custdb` database

```
yab database-custdb-data-dotd-update -data.customizations-default-dotd-custdb.regenerateoids:true -v
```

or,



```
yab database-custdb-data-dotd-update -data.ee-data-custdb.regenerateoids:true -v
```

- a Go to `<qad_install_dir>/customzations/mfg/default/data/qadadb` and add the following dump files:
  - `code_mst.d` (replace `<REPLACE_DOMAIN>` values with DOMAIN of the environment)
  - `flh_mstr.d`
  - `mnt_det.d`
  - `mnd_det.d`
  - `msg_mstr.d`
- b Go to `<qad_install_dir>/customzations/mfg/default/data/qadadm` and add the following dump files:
  - `pgmi_mst.d`
  - `lbl_mstr.d`
  - `drl_mstr.d`
- c Go to `<qad_install_dir>/customzations/mfg/default/data/custdb` and add the following dump files:

**Base Installation:**

- `wtskt_mstr.d` (replace `<REPLACE_DOMAIN>` values with DOMAIN of the environment)

**Advanced Installation:**

- `wma_mstr.d` (replace `<REPLACE_DOMAIN>` values with DOMAIN of the environment.)
- `wmalt_mstr.d` (replace `<REPLACE_DOMAIN>` values with DOMAIN of the environment)
- `wtt_mstr.d` (replace `<REPLACE_DOMAIN>` values with DOMAIN of the environment)
- `wtskt_mstr.d` (replace `<REPLACE_DOMAIN>` values with DOMAIN of the environment)

- 2 Check the YAB log for information. Check for errors or issues that occurred when the data load commands were executed.

### Config Directory

The config directory contains the `controllers.xml` file. Make sure you also have a backup of the `controllers.xml` file.

- 1 Go to `<qad_install_dir>/config/` and locate the `controllers.xml` file.
- 2 Before adding anything to the `controllers.xml` file, make sure there are no duplicates of the `controllers.xml` file as well as the entries in the same.
- 3 Add the additional entries from the `controllers.xml` file provided in the package to the existing `controllers.xml` file BETWEEN the `<controllers>` `</controllers>` tags.

The following is an example of the entry added to `controllers.xml`.

**Fig. 2.6**  
Example of controllers.xml Entry

```

<component>
  <name>EventTaskDeleteArchive</name>
  <apiMethod>
    <apiName>eventTaskDeleteArchive</apiName>
    <apiType>transaction</apiType>
    <className>com.qad.erp.api.wEHistDelArchcontroller</className>
    <extProgram>weevtkup.p</extProgram>
  </apiMethod>
</component>
<component>
<name>MaintainPackTransferSerial</name>
<apiMethod>
  <apiName>MaintainPackTransferSerial</apiName>
  <apiType>transaction</apiType>
  <className>com.qad.erp.api.wePackTransferSerialController</className>
  <extProgram>weapatr.p</extProgram>
</apiMethod>
</component>
<!-- NEW WAREHOUSE EXTENSION CLASS FILE ENTRY ENDS -->
<!-- NEW WAREHOUSE EXTENSION SERIALIZATION CLASS FILE ENTRY STARTS -->
<component>
  <name>MaintainSerMasterDataExt</name>
  <apiMethod>
    <apiName>MaintainSerMasterDataExt</apiName>
    <apiType>transaction</apiType>
    <className>com.qad.erp.api.pawsercontroller</className>
    <extProgram>pawsermt.p</extProgram>
  </apiMethod>
</component>
<component>
  <name>MaintainSerMasterDataDet</name>
  <apiMethod>
    <apiName>MaintainSerMasterDataDet</apiName>
    <apiType>transaction</apiType>
    <className>com.qad.erp.api.pawserdcontroller</className>
    <extProgram>pawsedmt.p</extProgram>
  </apiMethod>
</component>
<!-- NEW WAREHOUSE EXTENSION SERIALIZATION CLASS FILE ENTRY ENDS -->
</controllers>

```

## Programs Directory

The programs directory contains the following sub-directories:

- Sub-directory `programs/src/com/qad/erp/api` contains 30 class files.
- Sub-directory `programs/src/us/pa` contains 4 programs.
- Sub-directory `programs/src/us/we` contains 194 programs.
- Sub-directory `programs/src/us/xx` contains 1 programs.
- Sub-directory `programs/src/us/ws` contains 4 programs.
- Sub-directory `programs/src/triggers` contains 96 trigger files.

Follow these steps to copy the contents of the `programs` directory to the QAD customizations directory:

- 1 Go to the directory reserved for QAD customizations:

```
<qad_install_dir>/customizations/mfg/default/
```

**Note** If the customer has a different directory structure, use the one reserved for QAD customizations.

- 2 Copy the contents of the `programs` directory to:

```
<qad_install_dir>/customizations/mfg/default/
```

**Note** There should be no conflicts with the program names. If there are conflicts, they must be resolved before performing the copy operation.

- 3 Run YAB command:

```
yab code-mfg-customizations-update -v
```

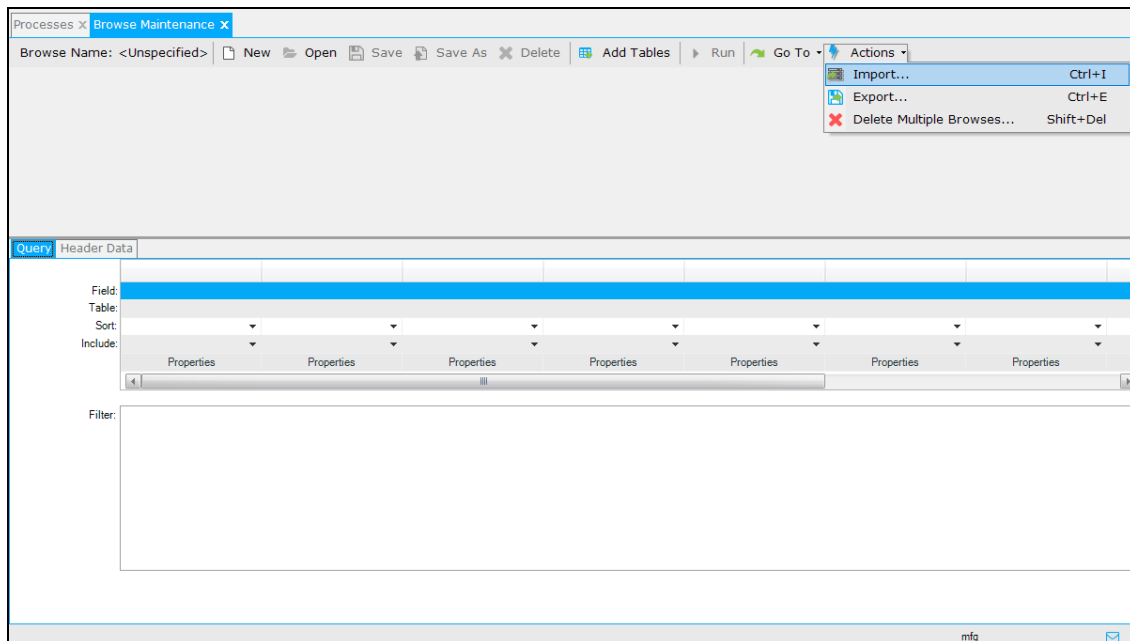
## Browses Directory

Follow these steps to import `.brwx` files from the `browses_consolidated_non_cvc_env` sub-directory:

- 1 Navigate to Browse Maintenance (36.4.8.13) and select Actions | Import.

**Fig. 2.7**

Browse Maintenance (36.4.8.13)



- 2 In the Input File field, enter the path to the `browses_consolidated_non_cvc_env` directory.
- 3 Select the `Warehouse_Ext_Browses.brwx` file.
- 4 Make sure all fields in the Associated Data frame are selected.
- 5 Click Import.

## 14 QAD AS Warehouse Extension Installation Guide

Follow these steps to import `.brwx` files from the `browses_cvc_environments` sub-directory:

- 1 Navigate to Browse Maintenance (36.4.8.13) and select Actions | Import.
- 2 Enter the path to the `browses_cvc_environments` directory.
- 3 Select all `*.brwx` files. The Base installation package contains 28 files. The Advanced installation package contains 66 files.
- 4 Make sure all the fields in the Associated Data frame are selected.
- 5 Click Import.

### Browse Collections Directory

Copy the contents from the package's `browse-collections` sub-directory to the following directory on the server:

```
<qad_install_dir>/browse-collections/
```

### ICT

Follow these steps to load the modification data from the `whs_data.dmp` file to QAD Enterprise Applications:

- 1 Run `icdatmt.p` from the menu or in ICT, navigate to Load Developers Data (90.24.2). For more information about the Load Developers Data (90.24.2) program, see the *QAD Integrated Customization Toolkit User Guide*.
- 2 In the Dump File field, enter the path to the `whs_data.dmp` file.
- 3 Accept the default values for the remaining parameters.
- 4 Run the program to load the ICT setup parameters.

### System Synchronization and Permissions:

Synchronize the entire installation by entering the following YAB command:

```
yab fin-sync-run -topic:Topic15
```

**Note** It is recommended that you assign Role Permission to a specific group in order to access the Warehouse Extension menu. Follow QAD standards to assign Role Permissions.

### QDOCS Directory

The QDOCS directory contains the following sub-directories:

- The `\schemas\QADEE\custom` directory contains the Request and Response schema (`.xsd`) files.
- The `\events\QADEE\custom` directory contains the Event files.
- The `\datFiles` directory contains files only for reference.

The following is the QDOCS table:



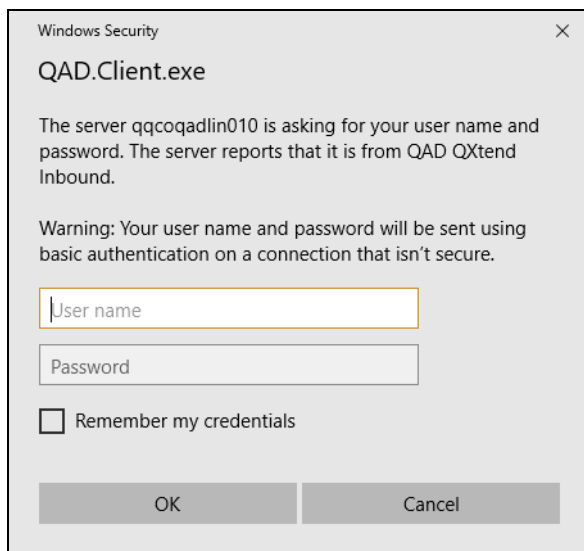
Route	Request	Response	Events	Procedure
UI API	maintainWarehouse-ERP3_6.xsd	maintainWarehouseResponse-ERP3_6.xsd	wesemt-ERP3_6.xml	wesemt.p
UI API	maintainWarehouseArea-ERP3_1.xsd	maintainWarehouseAreaResponse-ERP3_1.xsd	wearmt-ERP3_1.xml	wearmt.p
UI API	maintainStorageZone-ERP3_5.xsd	maintainStorageZoneResponse-ERP3_5.xsd	weszmt-ERP3_5.xml	weszmt.p
UI API	maintainWorkZone-ERP3_1.xsd	maintainWorkZoneResponse-ERP3_1.xsd	wewzmt-ERP3_1.xml	wewzmt.p
UI API	maintainWarehouseLocation-CUST_2.xsd	maintainWarehouseLocationResponse-CUST_2.xsd	wewlocmt-CUST_2.xml	wewlocmt.p
UI API	maintainStorZoneList-ERP3_1.xsd	maintainStorZoneListResponse-ERP3_1.xsd	weszlsmt-ERP3_1.xml	weszlsmt.p
UI API	maintainUserGroupZone-ERP3_1.xsd	maintainUserGroupZoneResponse-ERP3_1.xsd	weuzmt-ERP3_1.xml	weuzmt.p
UI API	maintainWhselItem-ERP3_1.xsd	maintainWhselItemResponse-ERP3_1.xsd	wewptmt-ERP3_1.xml	wewptmt.p
UI API	maintainItemStorage-ERP3_1.xsd	maintainItemStorageResponse-ERP3_1.xsd	weptsmt-ERP3_1.xml	weptsmt.p
UI API	maintainItemPack-ERP3_1.xsd	maintainItemPackResponse-ERP3_1.xsd	weptpcmt-ERP3_1.xml	weptpcmt.p
UI API	maintainSupItemInsp-ERP3_1.xsd	maintainSupItemInspResponse-ERP3_1.xsd	wewptmt-ERP3_1.xml	wewptmt.p
UI API	maintainASRepList-ERP3_1.xsd	maintainASRepListResponse-ERP3_1.xsd	wereplmt-ERP3_1.xml	wereplmt.p
UI API	maintainReplenLocStorage-ERP3_1.xsd	maintainReplenLocStorageResponse-ERP3_1.xsd	werptsmt-ERP3_1.xml	werptsmt.p
SI API	maintainwmmramstr-ERP3_1.xsd	maintainwmmramstrResponse-ERP3_1.xsd	-	procedure="com/qad/erp/api/APIDispatcher.p" methodName="processAPIRequest"
SI API	maintainMaterialRouting-ERP3_1.xsd	maintainMaterialRoutingResponse-ERP3_1.xsd	-	procedure="com/qad/erp/api/APIDispatcher.p" methodName="processAPIRequest"

Route	Request	Response	Events	Procedure
SI API	maintainLabelPrefix-CUST_2.xsd	maintainLabelPrefixResponse-CUST_2.xsd	welbpxmt-CUST_2.xml	procedure= "com/qad/erp/api/ APIDispatcher.p" methodName= "processAPIRequ est"
SI API	maintainAlgoAssign-ERP3_4.xsd	maintainAlgoAssignResponse-ERP3_4.xsd	-	procedure= "com/qad/erp/api/ APIDispatcher.p" methodName= "processAPIRequ est"

Follow these steps to install the QDOCS:

- 1 Navigate to Inbound in .NET.
- 2 Enter the user name and password.

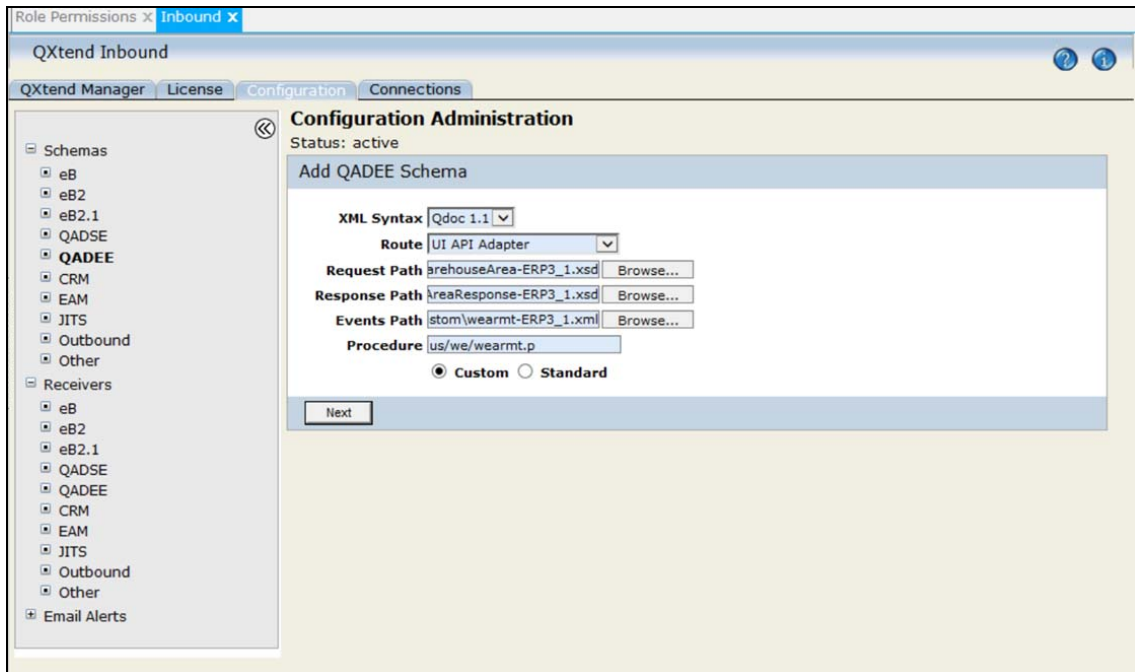
**Fig. 2.8**  
QXtend Login



- 3 Select the Configurations tab.
- 4 Select Schemas | QADEE in the left pane.
- 5 Click Add.
- 6 Select Continue Configuration update without suspending QXtend Inbound. Then click Submit.
- 7 Enter the information in the Add QADEE Schema panel. For example:
  - **XML Syntax.** Enter Qdoc 1.1.
  - **Route.** Enter UI API Adapter.

- **Request Path.** The \schemas\QADEE\custom directory contains the Request schema (.xsd) files.
- **Response Path.** The \schemas\QADEE\custom directory contains the Response schema (.xsd) files.
- **Events Path.** The \events\QADEE\custom directory contains the Event files.
- **Procedure.** Enter us/we/wearmt.p.

**Fig. 2.9**  
Installing QDOCS



### Data Load Directory

The data\_load directory contains the Excelerator and CIM data load files. The Excelerator-templates directory only contains template files.

**Note** Revise the Qxtend settings in the Excelerator template as per the target environment.

## Verify the Installation

To verify that the AS Warehouse Extension package was installed successfully, use the following steps:

- 1 Go to \$QAD\_HOME/build/logs/yab.log. The last two lines of the log file indicate whether the installation was successful.
- 2 Verify that the 3.25 menu exists.

## Post-installation Tasks

AS Warehouse Extension post-installation tasks consist of the following:

- Merge Existing Patches and Customizations
- Loading Field Help
- Restart Anti-virus

### Merge Existing Patches and Customizations

The AS Warehouse installation package contains modifications to the existing QAD ERP programs. If you previously applied QAD patches or customizations, merge the QAD patch changes, customizations, and any other changes.

### Loading Field Help

Use this procedure to load character-mode online field and procedure help. It does not affect custom help.

- 1 From a single-user EE character session, go to the System Interface menu (36.4) and select Field Help Load (36.4.13.14).
- 2 In Field Help Load, leave Field, Procedure, Status, and Text Type blank.
- 3 Complete the other fields:

*Language.* Enter an appropriate two-letter language code (such as US for English).

*Field Help Load File.* Enter the full path to the help data file `xxxxxxx-fieldhlp.fhd`.

The AS Warehouse Extension help data file is located in the `<Dist Dir>/XXX-XXXX` folder. Please note that there is a restriction on the number of characters that can be entered in this field. If you cannot enter the complete path and file name, copy the `xxxxx-fieldhlp.fhd` file into a temporary directory and then enter the temporary path to the help data file.

- 4 Skip loading help with lower status.
- 5 Enter Yes.
- 6 Press Go to begin the load.
- 7 Exit Field Help Load when the load is finished.

### Restart Anti-virus

Restart any anti-virus programs that were shut down to perform the AS Warehouse Extension package installation.