

QAD Enterprise Applications 2012 Enterprise Edition Release Notes

Revised April 2012

QAD Enterprise Applications 2012 – Enterprise Edition (QAD 2012 Enterprise Edition, or QAD 2012 EE) includes product changes made between August 26, 2011, and February 27, 2012.

This release contains new features and enhancements as well as fixes that resulted from maintenance activities. For detailed information about individual fixes, see the Product Changes & Advisories area on QAD's Online Support Center:

http://support.qad.com/product_changes/

The Release Notes describe changes in the following areas:

- Enhancements with Potential Compliance Impacts
- Enterprise Financials Enhancements
- Internationalization Enhancements
- Operational Enhancements
- Security Enhancements
- Installation and Conversion Updates

Note QAD 2012 EE is supported by the new version 2.9.5 of the QAD .NET User Interface. For details, see *QAD .NET User Interface Release Notes*.

Because of the new product direction with the Enterprise Edition, some features that existed in earlier versions of the core application are no longer available. Others are planned for future development. See “Additional System Changes and Limitations” on page 27 for information.

Enhancements with Potential Compliance Impacts

Product changes sometimes can affect the activities of customers in regulated environments. These companies may need to comply with Current Good Manufacturing Practices (cGMP), the Sarbanes-Oxley Act (SOX), regulations related to security-related aspects of the product's System Administration functions, and so on. Implementing changes in Enterprise Edition may require them to revalidate some of their processes and procedures, either internally or based on external guidance.

You should consider specifically reviewing some new features (shown in the following tables).

Important This document is limited to summaries of new product features. For in-depth descriptions of individual fixes within the release that may impact functionality on lower levels, please consult the product changes listings for this release on support.qad.com.

Table 1
Software Enhancements With cGMP Impact

Area	Feature Change
“Revaluation of WIP and Inventory Control Accounts” on page 8	You can now revalue Inventory and Work in Progress (WIP) control accounts relative to the statutory currency. The TC Revaluation in SC field now contains a new option, Inventory Rate, to facilitate this. The Inventory Rate option is available for revaluation relative to the statutory currency for Inventory and WIP control accounts, and uses the inventory exchange rate.
“Invoice Certification” on page 11	Invoice certification lets you mark customer invoices by assigning a unique, encrypted digital signature. Adding a signature uniquely identifies the origin and main properties of an invoice. Invoice certification is a legal requirement in countries such as Portugal.
“Withholding Tax” on page 14	The fiscal authorities of many South American countries handle several different types of withholding tax, including VAT withholding, social security withholding, income tax withholding, and others. Withholding taxes can apply to goods, as well as to services. To facilitate this, the withholding tax functionality has been enhanced in several areas.
“Generalized Code Groups” on page 20	You can now extend generalized codes security beyond system level to the job functional level. Using generalized code groups, you can extend security access to the Generalized Codes Maintenance menu beyond system level down to the job functional level. This enables you to limit the generalized code fields that a user can edit.
“Role Permissions Changes” on page 26	Several updates have been made to Role Permissions Maintain involving nodes on the Secured Items Not on Menu and Secured Items on Menu options.

Table 2
Software Enhancements With SOX Impact

Area	Feature Change
“Journal Entry Auto Balancing” on page 6	When you create a posting, the system calculates the value of the posting in base currency or statutory currency, or in both currencies. Normally, the base currency debit and credit totals and the statutory currency credit and debit totals must be equal in order to save the posting. However, if Journal Entry Auto Balancing is enabled, you can save a posting even if the posting is not balanced in base currency or in statutory currency, within certain limits. To balance the posting, the system automatically creates an additional posting line that balances the whole transaction. The additional posting line is made to an Auto Balance system account.
“Revaluation of WIP and Inventory Control Accounts” on page 8	You can now revalue Inventory and Work in Progress (WIP) control accounts relative to the statutory currency. The TC Revaluation in SC field now contains a new option, Inventory Rate, to facilitate this. The Inventory Rate option is available for revaluation relative to the statutory currency for Inventory and WIP control accounts, and uses the inventory exchange rate.
“Analysis Limitation” on page 9	The Analysis tab of the GL Account record has been updated to include new options and to improve usability.
“Supplier Invoice and Receiver Matching API” on page 10	The Supplier Invoice and Receiver Matching APIs have been extended to add support for the matching of logistical charges. In addition, the APIs now allow multiple purchase orders and receipts to be matched against a single invoice.
“Tax Excluded Field in Supplier Invoice” on page 10	A new Tax Excluded field has been added to the Supplier Invoice functions. This field facilitates Vertex use tax calculations and the recording of invoices with multiple taxes. It is also useful in situations where taxes apply, but do not appear on the invoice you received from the supplier.
“EDI Advanced Banking for Accounts Receivable” on page 12	EDI Advanced Banking for Accounts Receivable supports business cases where your bank acts as an intermediary to collect cash from customers. In these cases, the supplier notifies the bank of the invoice or staged payment details (including the amount, due date, and early or late payment conditions) shortly after the invoice is issued to the customer. The bank then starts a process in which a document is issued to notify the customer that the invoice or staged payment must be paid through the bank. An example of EDI Advanced Banking is <i>Boleto Bancários</i> , which is a significant payment collection system in Brazil.

Table 2 — Software Enhancements With SOX Impact (1 of 2)

Area	Feature Change
“Withholding Tax” on page 14	The fiscal authorities of many South American countries handle several different types of withholding tax, including VAT withholding, social security withholding, income tax withholding, and others. Withholding taxes can apply to goods, as well as to services. To facilitate this, the withholding tax functionality has been enhanced in several areas.
“Generalized Code Groups” on page 20	In support of segregation of duties requirements, you can now extend generalized codes security beyond system level to the job functional level by defining code groups. This enables you to limit the generalized code fields that a user can edit.

Table 2 — *Software Enhancements With SOX Impact (2 of 2)*

Enterprise Financials Enhancements

Financial Report Writer

Financial Report Writer is a group reporting solution that combines the Financials reporting functionality into a single user experience. It includes multi-entity and multi-domain reporting that lets you map charts of accounts and approximates consolidation results.

Financial Report Writer aggregates financial statements that are built on:

- A common chart of accounts (COA) including all dimensions available in Financials, such as domains, entities, layers, GL accounts, sub-accounts, cost centers, projects, SAFs, intercompany settings, and currencies
- A common currency—the presentation currency
- A common calendar

Financial Report Writer presents the financial data in a hierarchy, which can include multiple GAAP views. Financial Report Writer also provides a Legal Consolidation view and a Management Reporting view. The Legal Consolidation view is an approximation of the posted consolidation, which covers the full COA and is bottom line balanced (debits equal credits). The Legal Consolidation view also allows you to verify the completeness of data.

Financial Report Writer lets you create reports for subsets of the COA for management reporting purposes. For example, you can display the financial results for a given product line across all domains.

You can use Financial Report Writer to create multiple reporting cubes with different calendars and presentation currencies. Financial Report Writer provides a balance between predefined selections in the setup and filtering at reporting time. You can create new report structures or change existing report structures at any time. You can also rebuild the balances stored in the cubes when new cubes are introduced or when structural changes are made to the reporting COA.

Financial Report Writer also allows you to reuse a reporting hierarchy (tree) recursively in other hierarchies. You can use an existing reporting hierarchy as a template to copy and reuse when you create a new hierarchy. You can also use reporting hierarchies to create standard Balance Sheet, Income Statement, and Cash Flow reports.

The Financial Report Writer collects financial data from several source domains in a reporting COA. Therefore, you must specify which common report COA to use.

Report Chart of Accounts

Use Report Chart of Accounts Maintenance to maintain a common reporting chart of accounts.

You set up a report chart by selecting a GL shared set, a sub-account shared set, a cost center shared set, a project shared set, and up to 10 SAF concepts. The report COA setup also includes the COA cross-references that translate the COA of the source domains to the report COA.

Report Cube Definition

Use Report Cube Definition to set up report cubes.

You must specify the cube code and description, and the report chart to use, and set up the presentation currency (PC) and the exchange rates to use when converting from base currency or statutory currency to PC. You can also define the report calendar and a selection of entities to include in each cube.

Report Cube Generate

Use Report Cube Generate to generate data to the reporting tables FRWCubeDim and FRWCubeMeas.

To generate data, select one of the cubes you created previously. By default, the program generates data for the entire time frame defined in the report calendar of the cube. You can also regenerate a cube from a given start year and period if the previous years or periods defined in the report calendar for the cube contain data.

By default, Report Cube Generate generates data for all entities defined in the entity list of the cube, but you can also regenerate a cube for a single entity.

Cube Trial Balance View

Cube Trial Balance View lets you browse the balances created during cube generation.

The retrieved data lists opening balances, period activity (DR/CR), and closing balances in PC for the specified reporting periods and for all accounting dimensions in the details (domain, entity, GL account, sub-account, cost center, project, layer, daybook, currency, intercompany, and SAFs).

Report Analysis Code

Use Report Analysis Code Maintenance to create report analysis codes.

Each analysis code contains a set of filters on COA dimensions that enable you to selectively retrieve data from a report cube.

The report analysis code behaves like a dynamic filter. When new COA elements are added to the range for the report chart, they are automatically included in the report analysis code filter result. When you define the report tree (hierarchy), report analysis codes are linked as nodes of the tree.

There are four types of analysis codes:

- **A - COA linked.** Type A analysis codes retrieve data from the cube according to specific selection criteria you enter on subsequent screens.
- **C - Calculation.** Type C analysis codes contain calculations with other analysis codes.
- **S - Subtotal.** Type S analysis codes are used at a high level in the report hierarchy tree and summarize low-level nodes.
- **T - Text.** Type T analysis codes contain labels that are printed on the report.

Report Tree Maintenance

Use Report Tree Maintenance to create a report tree, which is a hierarchy built with report analysis codes. Report Tree Maintenance lets you select report analysis codes from a list and drag them to the tree hierarchy. Usually, the higher levels in the tree are totals, and the lower levels in the tree, also referred to as leaves, are balances from accounting.

Financial Report Tree Export and Financial Report Tree Import let you export report trees to CSV files and to import report tree CSV files.

Report Column Group Maintenance

Use Report Column Group Maintenance to define the number of columns for a report, the content of each column, and the presentation details. Each column group is also linked to a report chart because you can specify a report analysis code as the detailed element of a column and also because report analysis codes belong to a report chart.

Report Master Maintenance

Use Report Master Maintenance to define the report layout.

The report hierarchy is defined when you create a report tree. The report columns are defined in Report Column Group Maintenance and these two elements can be combined in the report master record. The report master also controls a number of general report layout options.

Financial Report Run

Use Financial Report Run to run reports created using Financial Report Writer.

Cube Daemon

The Cube daemon builds data for report cubes used in Financial Report Writer, and is fed by the History daemon. Therefore, if the History daemon stops, the Cube daemon does not receive any queue requests.

You must stop the Cube daemon before you can rebuild report cubes. You do not need to stop the History daemon; the Cube daemon catches up with missed updates when it restarts.

If the system finds errors during the update process (for example, missing exchange rates or missing COA cross-references), these are logged in the Cube Build Log and you can view the errors using Cube Build Log Browse.

When the system finds an error in cube data, the cube is assigned the status Needs Rebuild and the daemon stops further updates for that cube. You must determine the root cause of the error and rebuild the cube using Cube Generation so that the cube status becomes Operational again.

New Programs

Table 3 lists the new programs for Financial Report Writer.

Table 3
New Programs for Financial Report Writer

Menu	Label	Program
25.16.1	Report Chart of Account Maintenance	frchtmt.p
25.16.2	Report Cube Definition	frcdmt.p

Menu	Label	Program
25.16.3	Report Cube Generate	frcbgen.p
25.16.4	Report Cube Browse	frbr027.p
25.16.5	Cube Trial Balance View	BCube.CUBEGOTOTrialBalanceS elect
25.16.10	Report Analysis Code Maintenance	francdmt.p
25.16.11	Report Analysis Code Browse	frbr007.p
25.16.12	Report Column Group Maintenance	frcolmt.p
25.16.14	Report Tree Maintenance	BReportTree.Create
25.16.15	Report Master Maintenance	frmsmt.p
25.16.20	Financial Report Run	qadsh://menu/invoke?menu-key= A.4&menuitem-key=25.16.20
25.16.50.1	Cube Build Log Browse	frbr008.p
25.16.50.2	Financial Report Tree Import	frcsvld.p
25.16.50.3	Financial Report Tree Export	frtrdmp.p
36.14.16.18.1	Cube Daemon Configure	BCubeDaemon.Configure
36.14.16.18.2	Cube Daemon Clear Queue	BCubeDaemon.ClearQueue
36.14.16.18.3	Cube Daemon Monitor	BCubeDaemon.Monitor
36.14.16.18.4	Cube Daemon Start	BCubeDaemon.Start
36.14.16.18.5	Cube Daemon Stop	BCubeDaemon.Stop
36.14.16.18.6	Cube Daemon Unconditional Stop	BCubeDaemon.UnconditionalStop
36.25.88.3	Report Cube Consistency Check	frchkcb.p

Journal Entry Auto Balancing

When you create a posting, the system calculates the value of the posting in base currency or statutory currency, or in both currencies. Normally, the base currency debit and credit totals and the statutory currency credit and debit totals must be equal in order to save the posting. However, if Journal Entry Auto Balancing is enabled, you can save a posting even if the posting is not balanced in base currency or in statutory currency, within certain limits. To balance the posting, the system automatically creates an additional posting line that balances the whole transaction. The additional posting line is made to an Auto Balance system account.

The system creates a balancing posting when the following conditions apply:

- An Auto Balance system type account is defined for the GL shared set of the current domain.
- A posting is unbalanced in base currency, statutory currency, or in both currencies even after all existing mechanisms, such as rounding and exchange gain or loss, have been applied.
- At least one of the transaction currency, base currency, or statutory currency amounts is balanced (for automatic postings only)
- The unbalanced amount is sufficiently small; that is, less than or equal to the maximum number of posting lines minus one, multiplied by the rounding unit.

Example

The rounding for a currency is two decimal places, the threshold is .005, and the rounding unit is .01.

If a posting has four lines, the limit is:

$$(4 - 1) * .01 = .03.$$

In this case, any balance differences of .03 or less are posted automatically to the Auto Balance system account.

When an auto-balancing posting is created, the system also sends a notification e-mail to all users linked to the PostAutoBalNotify role in the entity in which the posting was created.

You must regularly review the postings to the Auto Balance account and reallocate them to the correct GL account. Otherwise, incorrect financial reports can be produced. You can manually reallocate the Auto Balance postings using manual journal entries or using Journal Entry Excel Integration Repair.

Consistency Checks Execute includes a check to determine if any postings remain on the Auto Balance system account at period end. If postings remain, the system raises a warning, but you are not prevented from setting the GL period to Reported. The Entity GL Period functions also perform the same check if you attempt to set the status of a GL period to Reported.

When you run Year End Closing Execute, the system checks if there is an outstanding balance on the Auto Balance system account for that year. If there is an outstanding balance, the Year End Closing stops. This check is performed on the official and management layers only. Postings to the transient layer for the Auto Balance account do not affect the Year End Closing.

Modified Programs

Table 4 lists the modified programs for Journal Entry Auto Balancing.

Table 4
Modified Programs for Journal Entry Auto Balancing

Menu	Label	Program
25.13.1.1.1	Journal Entry Create	BJournalEntry.Create
25.13.1.1.2	Journal Entry Modify	BJournalEntry.Modify
25.13.1.18	Journal Entry Excel Integration Repair	BJournalEntry.JournalEntryExcelIntegrationRepair
25.3.13.1	GL Account Create	BGL.Create
25.3.13.2	GL Account Modify	BGL.Modify
25.3.13.3	GL Account View	BGL.View
25.3.13.4	GL Account Delete	BGL.Delete
25.21.3.1	Consistency Checks Execute	BConCheck.Create
25.21.4.1	Year End Closing Execute	BYearClosing.Execute
25.4.2.5	Entity GL Period Report	BPeriod.ReportAccountingPeriod
36.3.6.3	Role View	BRole.View

Deductions

Deductions functionality will be available in a forthcoming QAD release. To prepare for this, new Deduction Category menu items have been added to the application.

The Deduction Category activities (27.6.16.1) are used to maintain deduction categories, which determine how the system will process a deduction. However, the system displays an error if you attempt to use these menu options.

The allocation screens of Customer Payment Create, Banking Entry Create, and Petty Cash Create; and Banking Entry Allocate and Petty Cash Allocate contain a Deductions button. However, the button is grayed out.

New Programs

Table 5 lists the new programs for deductions.

Table 5
New Programs for Deductions

Menu	Label	Program
27.6.16.1	Deduction Category Create	BDeductionCat.Create
27.6.16.2	Deduction Category Modify	BDeductionCat.Modify
27.6.16.3	Deduction Category Delete	BDeductionCat.Delete
27.6.16.4	Deduction Category View	BDeductionCat.View
27.6.16.5	Deduction Category Excel Integration	BDeductionCat.ExcelIntegration

Modified Programs

Table 6 lists the modified programs for deductions.

Table 6
Modified Programs for Deductions

Menu	Label	Program
27.6.4.1	Customer Payment Create	BDDocument.Create
31.1.1	Banking Entry Create	BBankingEntry.Create
31.1.5	Banking Entry Allocate	BBanking Entry.Allocate
31.2.1	Petty Cash Create	BCashBox.Create
31.2.5	Petty Cash Allocate	BCashBox.Allocate

Revaluation of WIP and Inventory Control Accounts

You can now revalue Inventory and Work in Progress (WIP) control accounts relative to the statutory currency, and you can revalue the balances of these accounts relative to the base currency in the case of consolidations.

The TC Revaluation in SC field now contains a new option, Inventory Rate, to facilitate this. The Inventory Rate option is available for revaluation relative to the statutory currency for Inventory and WIP control accounts, and uses the inventory exchange rate.

You must revalue open balances in Inventory and WIP control accounts relative to the statutory currency to report closing valuations for the balance sheet. Inventory and WIP balances in statutory currency must be revalued to use the latest inventory exchange rate when:

- The inventory exchange rate type is used to calculate standard costs in statutory currency.
- Standard costs in base currency are reviewed periodically and the inventory exchange rates are modified.

Base currency Inventory and WIP control account balances must be revalued in the books of a consolidation entity if the base currency of a source entity is different than that of the consolidation entity.

Modified Programs

Table 7 lists the modified programs for the revaluation of Inventory and WIP control accounts.

Table 7
Modified Programs for Revaluation of Inventory and WIP Control Accounts

Menu	Label	Program
25.3.13.1	GL Account Create	BGL.Create
25.3.13.2	GL Account Modify	BGL.Modify

Menu	Label	Program
25.3.13.3	GL Account View	BGL.View
25.3.13.4	GL Account Delete	BGL.Delete

Automatic Transactions

When an unexpected error occurs during Operational Transaction Post that requires the transaction to be rolled back, only the current batch is now rolled back. Transactions posted in previous batches remain posted.

When an unexpected error occurs during Invoice Post and Print that requires the transaction be rolled back, only the current transaction is now rolled back.

Modified Programs

Table 8 lists the modified programs for automatic transactions.

Table 8
Modified Programs for Automatic Transactions

Menu	Label	Program
7.13.4	Invoice Post and Print	soivpst.p
25.13.7	Operational Transaction Post	gluntrex.p

Analysis Limitation

The Analysis tab of the GL Account record has been updated to include new options and to improve usability.

The Analysis Type field has been removed, and three separate check boxes are used to activate cost center, project, and SAF analysis.

The Analysis Limitation field includes two new options, Cost Center Required and Project Required. The Cost Center Required setting is supported in the Financials, Operational, and Fixed Assets modules, whereas the Project Required setting is supported in the Financials module only.

The At Least One option in the Analysis Limitation field has been renamed One Required. This option has been enhanced to support postings from operations and the Fixed Assets modules, in addition to Financials.

For existing accounts used in Financials transactions, you can change the analysis limitation setting to use the new values without restriction. However, you may encounter issues if you change the analysis limitation settings for GL accounts used in unposted operational transactions.

Important It is recommended that you post all operational GL transactions before changing the GL account analysis limitation.

For unposted operational GL transactions that met the analysis limitation when the transaction was created and where the analysis limitation has since been changed to a more restrictive limitation (for example, from None to Cost Center Required), the system displays an error when you run Operational Transaction Post.

When posting operational transactions for accounts with updated analysis limitation settings, if a small number of errors are raised, use Unposted GL Transaction Correction to update the analysis limitation value for the accounts and then rerun Operational Transaction Post. If a large number of posting errors are

raised, undo the analysis limitation change, post the transactions, and then restore the analysis limitation change.

Similarly, the Pending Invoice Register does not display unposted sales invoices if the analysis limitation settings for the sales accounts were updated after the invoice was created, and where the invoice is likely to cause errors during Invoice Post and Print.

Modified Programs

Table 9 lists the modified programs for Analysis Limitation.

Table 9
Modified Programs for Analysis Limitation

Menu	Label	Program
25.3.13.1	GL Account Create	BGL.Create
25.3.13.2	GL Account Modify	BGL.Modify
25.3.13.3	GL Account View	BGL.View
25.3.13.4	GL Account Delete	BGL.Delete

Supplier Invoice and Receiver Matching API

The Supplier Invoice and Receiver Matching APIs have been extended to add support for the matching of logistical charges. In addition, the APIs now allow multiple purchase orders and receipts to be matched against a single invoice.

Tax Excluded Field in Supplier Invoice

A new Tax Excluded field has been added to the Supplier Invoice functions.

Select the Tax Excluded field in the Supplier Invoice record to indicate that the amount specified in the TC Invoice Amount field excludes tax. The system then uses the amount in the TC Invoice Amount field as the basis for tax calculation. Clear the Tax Excluded field to indicate that the amount specified in the TC Invoice Amount field includes tax.

The Tax Excluded field facilitates Vertex use tax calculations and the recording of invoices with multiple taxes. It is also useful in situations where taxes apply, but do not appear on the invoice you received from the supplier.

Modified Programs

Table 10 lists the modified programs for the Tax Excluded field.

Table 10
Modified Programs for the Tax Excluded Field

Menu	Label	Program
28.1.1.1	Supplier Invoice Create	BCInvoice.Create
28.1.1.2	Supplier Invoice Modify	BCInvoice.Modify
28.1.1.3	Supplier Invoice View	BCInvoice.View
28.1.1.4	Supplier Invoice Approve	BCInvoice.Approve
28.1.1.5	Supplier Invoice Release for Payment	BCInvoice.Release For Payment
28.1.1.6	Supplier Invoice Prepare Allocation	BCInvoice.Prepare Allocation
28.1.1.7	Supplier Invoice Allocate	BCInvoice.Allocate

Menu	Label	Program
28.1.1.9	Supplier Invoice Delete	BCInvoice.Delete
28.1.1.10	Supplier Invoice Initial Create	BCInvoice.InitialCreate
28.1.1.11	Supplier Invoice Reverse	BCInvoice.Reverse
28.1.1.12	Supplier Invoice Replace	BCInvoice.Replace

Customer Payment Mass Change

You can use a new check box and a new field in Customer Payment Mass Change to group payments created using Customer Payment Create and Customer Payment Selection Create together in a single payment selection. The New Payment Selection check box and Selection Code field are located under the grid in Customer Payment Mass Change. The ability to combine payments and selections in a single selection facilitates the transfer of payment to your bank.

In the Customer Payment Mass Change grid, select the payments to which you want to assign a new payment selection code. Select the New Payment Selection field under the grid, and specify the new payment selection code in the Selection Code field. When you click Apply, the Payment Selection Code field in the grid is updated to display the new payment selection code. When you click Save, the lines you selected in the grid are moved to the new payment selection.

Customer Payment Mass Change also contains three new search fields that help you to locate payments: Business Relation Code, Business Relation Name, and Business Relation Search Name.

Modified Program

Table 11 lists the modified program for Customer Payment Mass Change.

Table 11
Modified Programs for Customer Payment Mass Change

Menu	Label	Program
27.6.4.5	Customer Payment Mass Change	BDDocument.Change Status

Internationalization Enhancements

Invoice Certification

Invoice certification lets you mark customer invoices by assigning a unique, encrypted digital signature. Adding a signature uniquely identifies the origin and main properties of an invoice. Invoice certification is a legal requirement in countries such as Portugal. QAD Enterprise Financials 2011.1 and higher have been certified by the Portuguese government according to the Decree 363/2010 requirements.

The signature is based on the main properties of the invoice (such as the amount, creation date, and number) and on the signature of the previous customer invoice to ensure that there are no gaps. The invoice certification number assigned to QAD by the local government and the signature are printed on each invoice.

The signature is generated using OpenSSL and a private key. The private key is generated using the RSA algorithm, and remains secret at QAD. Using the private key and OpenSSL, QAD generates a public key. The private key and public key have a strict one-to-one relationship.

The public key is communicated to the local government where it is used to verify whether the digital signatures on invoices created using QAD Enterprise Financials are valid. A digital signature only passes validation if it was generated using the private key linked to the public key.

To create invoices marked by digital signatures, you must enable invoice certification at domain level, and the signatures are then created by daybook and domain. There must be no gaps in the sequence.

You generate the signatures by running Invoice Post and Print for invoices that originate in the operational modules, or by using Customer Invoice Create to create manual invoices in Financials.

The SAFT format is a commonly accepted file format for exporting accounting data for audit purposes. In Enterprise Financials, the SAFT export for Portugal has been implemented (SAFT-PT).

When you have generated the signature, you cannot change the invoice and the signature. Otherwise, the signature will become corrupt or the signature chain will be broken. Due to the fact that each signature is created using encryption and a private key, you cannot correct invoice signatures if the invoice amount changes.

In order to submit the signatures for review, you must export them to a special audit XML file using Regional Accounting/Tax Data Export (36.5.3).

Modified Programs

Table 12 lists the modified programs for Invoice Certification.

Table 12
Modified Programs for Invoice Certification

Menu	Label	Program
7.13.4	Invoice Post and Print	soivpst.p
7.13.12	Invoice Post and Reprint	soivrp10.p
27.1.1.1	Customer Invoice Create	BDInvoice.Create
27.1.1.3	Customer Invoice View	BDInvoice.View
27.1.1.4	Customer Invoice Print	BDebtorReport.DebtorInvoicePrint
36.1.1.1.1	Domain Create	BDomain.Create
36.1.1.1.2	Domain Modify	BDomain.Modify
36.1.1.1.3	Domain View	BDomain.View
36.5.3	Regional Accounting/Tax Data Export	gprptdrv.p
36.24.3.1	System Maintain	BSystem.Maintain

EDI Advanced Banking for Accounts Receivable

EDI Advanced Banking for Accounts Receivable supports business cases where your bank acts as an intermediary to collect cash from customers. In these cases, the supplier notifies the bank of the invoice or staged payment details (including the amount, due date, and early or late payment conditions) shortly after the invoice is issued to the customer. The bank then starts a process in which a document is issued to notify the customer that the invoice or staged payment must be paid through the bank. An example of EDI Advanced Banking is *Boleto Bancários*, which is a significant payment collection system in Brazil.

Before you use EDI Advanced Banking, you can use new fields in GL Account Create to define standard accounts for interest charges. You can use the same GL account for both AR and AP interest charges, or you can use a separate account for each. The AR Interest and AP Interest fields are available through Design Mode in GL Account Create. If you do not define interest accounts for the GL bank account, the system posts interest to the discount accounts associated with the bank account. The interest charge rate is defined in the Credit Term record (Daily Overdue Int Percentage field).

To start the EDI Advanced Banking flow, you (the supplier) select open customer invoices and staged payments, and create a payment selection at status Initial. The payment selection status is set to Initial because you are creating a payment order to your bank to collect a specified amount at a future date and no GL entries or updates to AR open balances are required.

Note The Initial status is used in EDI Advanced Banking only. You cannot move a payment selection from the Initial status to another payment status.

To facilitate this process, the Actions fields in Process Incoming Bank Files contains a new option, Acknowledge Bank Receipt. You can use this option to display bank files that contain this type of message.

If required, you can modify the unexecuted Initial payment selection using Customer Payment Selection Modify to update due dates or interest rates, or to remove lines.

You must then execute the payment selection. EDI eCommerce then sends the resultant file to the bank to notify it of payments to collect. The bank then notifies you regarding whether it accepts or rejects the payment requests.

If you need to cancel invoices from the executed payment selection or change due dates or the interest rate, you can use Customer Payment Selection Modify to modify the Initial payment selection to cancel or update lines. During this process, you must move the canceled or updated lines to an unexecuted Initial payment selection, and execute the payment selection to inform the bank of the changes.

Note You can only use Customer Payment Selection Modify to modify payment selections with the status Initial.

When the bank notifies you that it has received payment from your customers, the system creates a new payment with the status For Collection or Paid. The system also post discounts allowed for early payment and posts interest received if the customers do not pay by the due date.

You can use Customer Payment Selection Extended View to view payment details for Initial payment selections. You can search using a variety of criteria, such as the shipper, voucher, internal reference number, or bank title number, and have the option to retrieve only executed or only unexecuted payment selections.

New Programs

Table 13 lists the new programs for EDI Advanced Banking.

Table 13

New Programs for EDI Advanced Banking

Menu	Label	Program
27.6.6.6	Customer Payment Selection Modify	BDPaymentSelection.Modify
27.6.6.8	Customer Payment Selection Extended View	BDPaymentSelection.ExtendedView

Modified Programs

Table 14 lists the modified programs for EDI Advanced Banking.

Table 14

Modified Programs for EDI Advanced Banking

Menu	Label	Program
25.3.13.1	GL Account Create	BGL.Create
25.3.13.2	GL Account Modify	BGL.Modify
25.3.13.3	GL Account View	BGL.View

Menu	Label	Program
25.3.13.4	GL Account Delete	BGL.Delete
27.6.4.6	Customer Payment Selection Create	BDPaymentSelection.Create
31.1.6	Process Incoming Bank Files	BBankImportLineProcess.BankImportProcess

Suspended and Delayed Taxes

It is a legal requirement in some countries that the posting to the final tax account must use the exchange rate published by the tax authorities at the date of the payment, or the accounting rate at the date of payment, if the tax rate is not defined.

To address this requirement, the Taxes tab in the Entity record contains two new fields, Suspended Date Type and Delayed Date Type, that let you indicate the date the system must use to retrieve the exchange rate for suspended and delayed tax transactions. The fields have the following options:

- Invoice Posting Date: The system uses the exchange rate applicable on the date on which the invoice was created. This is the default option.
- Payment Date: The system uses the exchange rate applicable on the date on which the payment and tax postings were created.

Modified Programs

Table 15 lists the modified programs for suspended and delayed taxes.

Table 15
Modified Programs for Suspended and Delayed Taxes

Menu	Label	Program
36.1.1.2.1	Entity Create	BCompany.Create
36.1.1.2.2	Entity Modify	BCompany.Modify
36.1.1.2.3	Entity View	BCompany.View

Withholding Tax

QAD 2012 EE introduces a number of withholding tax enhancements. The fiscal authorities of many South American countries handle several different types of withholding tax, including VAT withholding, social security withholding, income tax withholding, and others. Withholding taxes can apply to goods, as well as to services. To facilitate this, the withholding tax functionality has been enhanced.

Withholding Tax Types in Tax Environments

You can now associate withholding tax types with environments in Tax Environment Maintenance. Previously, the system prevented you from doing this.

Automatic Calculation of Withholding Tax

If withholding tax is enabled for the domain and the supplier is subject to withholding tax, the Withholding Tax tab is enabled in Supplier Invoice Create when you create invoices for that supplier.

The system can now populate the Withholding Tax tab automatically if the tax environment contains one or more tax types for which the Withholding Tax field is selected in Tax Type Maintenance.

When you create an invoice subject to withholding tax, the applicable tax rates are conceptually split into two groups: normal tax rates and withholding tax rates. The normal tax rates are used to populate the Tax tab of Supplier Invoice Create. After normal taxes are calculated, the system uses the withholding tax rates to populate the Withholding Tax tab of Supplier Invoice Create. GTM calculates all amounts.

As before, you can overwrite the calculated amounts for a given tax rate if the Update Tax Allowed field is selected in Tax Rate Maintenance.

If the tax environment does not contain withholding tax types, you must manually enter the withholding tax data in the Withholding Tax tab of Supplier Invoice Create.

Purchase Orders

If withholding tax is enabled for the domain, the supplier is subject to withholding tax, and one or more withholding tax types are linked to the current tax environment; withholding tax is calculated and stored automatically by GTM when you create purchase orders for the supplier.

The calculated withholding taxes do not display in the trailer of Purchase Order Maintenance.

Fiscal Receiving

If you have activated fiscal receiving, withholding tax is enabled for the domain, the supplier is subject to withholding tax, and one or more withholding tax types are linked to the current tax environment, withholding tax is calculated and displayed in the trailer of Fiscal Receiving. If the Update Tax Allowed field is selected in Tax Rate Maintenance, you can update the withholding tax calculated in Fiscal Receiving.

ERS

If fiscal receiving is activated by selecting Fiscal Confirm Required in Purchasing Control (5.24), ERS lets you create matched supplier invoices and credit notes or invoice corrections using fiscal receipts, and not PO receipts.

When ERS creates supplier invoices based on fiscal receipts, the Withholding Tax tab of the supplier invoice is automatically populated based on the withholding taxes associated with the purchase order and updated withholding tax values from Fiscal Receiving.

If you select the Recalculate Tax Details field in the ERS Processor, the system uses the tax settings of the fiscal receipt for withholding taxes and normal taxes, but the tax values are recalculated. However, if the Recalculate Tax Details field is cleared, the edited withholding tax values entered in Fiscal Receiving populate the Withholding Tax tab of the supplier invoice created by ERS.

Withholding Tax and Receiver Matching

In Receiver Matching, if the invoice was created in the initial state, the system always uses the withholding tax data calculated by GTM on the purchase order. The system overwrites any withholding tax values you enter in the Withholding Tax tab of Supplier Invoice Initial Create.

If the invoice is not initial, if the tax environment contains withholding tax types, the withholding tax is calculated by GTM.

New Substitution Address Type

In QAD EE, a tax zone can only have one state tax ID specified. However, for Brazilian ICMS Substitution Tax, multiple IDs may be required in cases where the company is issuing goods or services to multiple states and each state has its own tax ID.

To set up ICMS Substitution Tax, you must define a substitution tax zone and substitution tax state in Company Address Maintenance (2.12) to link the company with a related customer's state tax ID. A new Substitution system address type has been created for use in business relations. The Substitution address type is used to link a company address with the state tax ID and tax zone.

Threshold for Withholding Tax on Services

In some countries, withholding tax on services only applies when the value of invoices paid for a supplier in a calendar month exceeds a set threshold value. QAD 2012 EE now facilitates this requirement.

Note Services invoices are identified as invoices that have at least one tax rate with a tax usage that is marked as Service.

In QAD Enterprise Applications, withholding tax on services is always assumed to apply by default. You can then use the Withholding Tax report to identify suppliers where the cumulative services payments for the month are less than the threshold. You must then manually repay the relevant withholding tax amounts to those suppliers.

Withholding Tax in Banking Entry and Petty Cash

You can now allocate a banking entry or petty cash entry directly to an invoice subject to withholding tax. In this case, a withholding tax record with status Due is created and the related withholding tax liability is posted.

New Withholding Tax Fields in Tax Rate Maintenance

Tax Rate Maintenance contains a new frame that is displayed when you define tax rates for withholding tax types. The new frame contains the following optional fields:

- Threshold Amt for Full WHT, used to specify the minimum invoice amount for which withholding tax applies.
- Min WHT Amt, used to specify the minimum withholding tax amount. If the withholding tax amount is less than the value specified in this field, no withholding tax is applied.
- Min Non-Tax WHT Amt, used to specify an amount to deduct from the supplier invoice total when calculating the withholding tax amount.
- Fixed WHT Surplus Amt, used to specify a fixed amount to add to the calculated withholding tax amount.
- Include in Export, used to indicate whether the withholding tax amounts must be included when the data is exported to file.
- Regime Code, WHT Tax Code, and Operation Code, which are required for some types of magnetic file.
- Gross Income Jurisdiction, used to specify the gross income jurisdiction code defined by the local government. In some countries, you must supply this value for Gross Income Perception type taxes.

Replace Percentage Recoverable by Tax Base

In some cases, not all of the fee amount is subject to withholding tax. Previously, you used the Percentage Recoverable field in Tax Rate Maintenance to specify the portion of the fee for which withholding tax applied.

From QAD 2012 EE, the Tax Base field in Tax Rate Maintenance replaces the Percentage Recoverable field as the means to indicate the portion of the fee for which withholding tax applies. When converting to QAD 2012 EE, the conversion creates the required tax bases automatically and updates the withholding tax rates accordingly.

Open Item Adjustment

In Open Item Adjustment Create, when you adjust an open item subject to withholding tax, the movement is considered a payment. This means that the system creates a withholding record with the status Due and the withholding tax liability is posted.

In Supplier Invoice Create, you can also adjust open items by linking an existing open item, such as a credit note, to a newly created open item. Withholding tax is supported in this flow also. However, you cannot manually enter the withholding tax amount so both open items must be subject to withholding tax and subject to the same overall withholding tax rate (percentage).

Supplier Withholding Tax View

The Supplier Withholding Tax View is now directly accessible from the menu. Previously, this was only available as a right-click option in the Supplier browse.

Customized Withholding Tax Calculations

A number of countries require complex algorithms for the calculation of withholding tax.

For example, some calculations must use the company's payment history to a supplier or consult external sources to retrieve the applicable withholding tax rate (percentage). The standard calculation code has been updated so that you can use non-intrusive customization add customized calculation logic.

Note Tax methods are still a valid way to implement country-specific calculations.

Modified Programs

Table 16 lists the modified programs for withholding tax.

Table 16

Modified Programs for Withholding Tax

Menu	Label	Program
5.7	Purchase Order Maintenance	popomt.p
5.20.1	Fiscal Receiving	poldnfmt.p
28.10.13	ERS Processor	BERSProcessor.Process
28.1.1.1	Supplier Invoice Create	BCInvoice.Create
28.1.1.11	Supplier Invoice Reverse	BCInvoice.Reverse
28.1.1.12	Supplier Invoice Replace	BCInvoice.Replace
28.2.1	Receiver Matching Create	BAPMatching.Create
29.3.1	Tax Environment Maintenance	txtxemt.p
29.4.1	Tax Rate Maintenance	txtx2mt.p

Menu	Label	Program
29.15.4	Supplier Withholding Tax View	BCreditor.CreditorGOTOWHTSelect
29.15.10	Withholding Tax Report	qadsh://menu/invoke?menu-key=A.4&menuitem-key=29.15.10
31.1.1	Banking Entry Create	BBankEntry.Create
31.1.5	Banking Entry Allocate	BBankEntry.Allocate
31.2.1	Petty Cash Create	BCashBox.Create
31.2.5	Petty Cash Allocate	BCashBox.Allocate
36.1.4.3.1	Business Relation Create	BBusinessRelation.Create
36.1.4.3.2	Business Relation Modify	BBusinessRelation.Create

Tax Interface Control

Tax Interface Control, which is used to configure the Sales and Use Tax Interface, contains a new field called Use Extended Zip Codes.

Select the Use Extended Zip Codes field to enable the use of extended nine-character zip codes. Clear the field if you want the system to only recognize standard five-character zip codes. In this case, if you create an address that has a nine-character zip code, the last four characters are not processed by the system.

Modified Program

Table 17 lists the modified program for the Sales and Use Tax Interface.

Table 17
Modified Programs for the Sales and Use Tax Interface

Menu	Label	Program
29.12.24	Tax Interface Control	vqpm.p

Operational Enhancements

Planning and Scheduling Workbenches Enhancements

The Planning and Scheduling Workbenches include the following changes and enhancements:

- Product Structure Filter Enhancement
- Reverting Work Order Changes
- Performance Improvements

Product Structure Filter Enhancement

Customer demand is dynamic; that is, schedulers constantly face increasing/decreasing order quantities, new orders entries, and changes in order dates. In mid- to long-term planning and scheduling, MRP assists a scheduler with these dynamic changes by updating the planned production orders, time-phased across all levels of the product structure; however, once the scheduler firms those planned orders, MRP no longer has the authority to change the orders. In these situations, the scheduler must manually update the firm orders that are impacted by changes in customer demand.

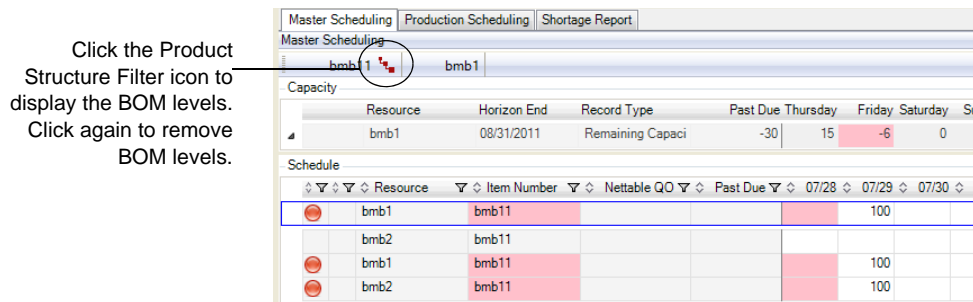
To make changes across all product structure levels that relate to a change at the parent level—the finished item level—schedulers typically had to go through many multilevel planning cycles to make updates. When a product has a bill of materials (BOM) that is two or more levels deep, schedulers had no way to:

- Quickly determine the demand impact on the dependent lower levels.
- Efficiently update the schedules across all levels of the BOM impacted by the change.
- Perform an update for just a single item and the related dependent items, which could take considerable time. Dozens of such updates can be performed every day.

With this version of the workbenches, schedulers can use the new Product Structure Filter to gauge the impact of the change immediately for all levels of the BOM. The MSW Schedule Grid includes the Product Structure Filter (see Figure 1).

With a single click, schedulers can render all levels of an item—both up and down—within the Schedule Grid. When schedulers click the Product Structure Filter, the filter turns red and the MSW Schedule Grid provides immediate visibility to all items and item schedules related to the selected item. Schedulers can quickly visualize QOH as well as the PQOH for each component across the BOM for the scheduled production order, letting them quickly gauge the impact of the change for lower levels. When the scheduler clicks the Product Structure Filter again, the BOM levels are removed from the Schedule Grid.

Fig. 1
Schedule Grid Product Structure Filter



To determine BOM levels, select to display the Levels column in the Schedule Grid by right-clicking on any column header in the Schedule Grid, then selecting Columns, and Levels. When levels display in the grid, you can determine the product hierarchy. A level 0 (zero) is the main item, while a 1 is one upper level, a 2 is two upper levels, and -1 is one lower level, -2 is two lower levels, and so on.

Reverting Work Order Changes

This release provides the ability to undo all changes made to a work order. This feature is useful when you accidentally make a change to a work order or when you decide that the resulting effect on the schedule is not as expected or wanted. You can undo all changes to a work order as long as you have not saved your data.

Performance Improvements

Several performance improvements were made to the workbenches:

- For searches, the search now takes significantly less time and places a smaller load on the system that hosts the NetUI AppServer.
- For work order creation, the response time when entering values into empty cells in the schedule grid has been significantly improved.
- For work order save, the response time when saving changes has been significantly improved.

Generalized Code Groups

Using generalized code groups, you can extend security access to the Generalized Codes Maintenance menu beyond the system level down to the job functional level. This lets you limit the generalized code fields that a user can edit.

Generalized Code Group Maint (36.2.10) enables you to create groups. You can assign generalized code fields to the groups and give roles permission to the groups to edit the codes. A generalized code group associated with generalized codes can be synchronized to other domains and databases using QXtend.

By default, two generalized code groups are supplied. Generalized codes associated with system-supplied fields are assigned to the SYSTEM group. All generalized codes not part of the SYSTEM group are assigned to the APP group.

If you do not want to use the generalized code groups functionality, no action is necessary and the system continues to function as expected.

Logistics Accounting

The Logistics Accounting module currently emphasizes effective accrual and payment management. In particular, it is used to handle the logistics charges of third-party logistics providers when shipping goods between sellers and buyers.

The new enhancements in the Logistics Accounting module ensure more accurately calculated costs, greater visibility, and more control of the total costs involved in getting goods from a source to a destination.

New features ensure that:

- Logistics Accounting is supported by all costing methods used by QAD systems (standard and average costing as well the new periodic costing methods, WAVG and FIFO). To introduce this functionality, modifications were made in the Cost Management module as well to allow usage of multiple cost elements for the cost categories material and overhead.
- Logistics charges can be captured manually during the ordering process. This increases accuracy and provides the ability to enter logistics charges amounts as fixed by delivery (charge by bulk), or as variable by quantity (charge by unit), or a percentage (currently these amounts are determined by the system based on the item unit cost values for the associated cost element).
- Logistics charge price lists can be defined for logistics charges with repetitive logistics services.
- Various apportion methods can be defined (by weight, volume, and value) by logistics charge code so that the calculated accrual amounts per item delivered are more accurate. Logistic Price variance accounts have been introduced for when standard cost is used. In case of average costing, the item unit cost is recalculated after receiving inbound goods based on the actual logistics charge amount due for a specific logistics charge code. This functionality allows IFRS guidelines and local regulations to be adhered to more closely.
- Users have complete visibility of logistics charge costs before and after delivery of goods. New reports and documents have been introduced for purchase orders, distribution orders, and sales orders to retrieve the information for specific logistics charges per order, per shipper, and per line.
- The supplier invoices are based on the real amounts charged, which are based on predefined contracts. This functionality allows the AP supplier invoice matching process to run more quickly and easily.

- For outbound shipments, users can now adjust the freight charge amount (in case of bulk) or logistics charge rates (in case of unit) on the order. This way, more accurate prices can be accrued for sales and distribution orders. In the case of sales orders, exact amounts can now be charged to the customer (either in price or on trailer). The user can also modify these prices separately. This allows users to have different amounts to pay suppliers and amounts to charge customers.

Table 18

New Programs for Logistics Accounting

Menu	Label	Program
2.15.9	Logistics Charge Price List Menu...	
2.15.9.1	Logistic Trade Zone Maintenance	latrznmt.p
2.15.9.2	Logistic Trade Zone Browse	labr020.p
2.15.9.4	Trade Environment Maintenance	latrenmt.p
2.15.9.5	Trade Environment Browse	labr022.p
2.15.9.7	Trade Class Maintenance	latcmt.p
2.15.9.8	Trade Class Browse	labr018.p
2.15.9.13	Logistic Charges Price List Mnt	lalcprcmt.p
2.15.9.14	Logistic Charges Price List Brw	labr019.p
5.6	Logistics Accounting for PO Menu...	
5.6.1	PO Logistics Charges Maintenance	rslamt.p
5.6.2	Logistics Charges Report	laporsr2.p
5.6.3	Logistics Charges Document Print	laporsrp.p
7.6	Logistics Accounting for SO Menu	
7.6.1	SO Logistics Charges Maintenance	sorclamt.p
7.6.2	Logistics Charges Report	lasorc2.p
7.6.3	Logistics Charges Document Print	lasodsrp.p
12.21	Logistics Charges for DO Menu	
12.21.1	DO Logistics Charges Maintenance	dodslamt.p
12.21.2	Logistics Charges Report	ladodsr2.p
12.21.3	Logistics Charges Document Print	ladodsr2.p

Table 19

Modified Programs for Logistics Accounting

Menu	Label	Program
2.15.1	Logistics Charge Code Maintenance	lalcmt.p
2.15.13	Inbound Account Maintenance	laiacmt.p
2.15.24	Logistics Accounting Control	lacpm.p
5.13.1	PO Maintenance	popomt.p
5.13.14	PO Shipper Maintenance	rsshmt.p
7.9.15	Sales Order Shipments	sosois.p
36.9.1	Logistics Operational Accounting Control	filacpm.p

New GRS Requisition Approval Function for .NET UI

QAD 2012 EE provides an intuitive, .NET UI-based collection, Requisition Approval (5.2.10.1), as an alternative to the menu-driven approval process in earlier versions. This was previously available as an optional add-on for QAD 2011.1 EE.

Important Requisition Approval is available only for customers with a currently active QAD Maintenance license.

All previous menu functions are still available; for example, you still must use the legacy process from the character UI.

Record Filtering

In the initial browse view, use .NET UI filtering tools to select the requisitions you are interested in. For example, you can limit the display to only those requisitions that are currently in your queue. This is a standard .NET UI browse filter; click the Add icon (+) to create more filter criteria that reduce the list of requisitions.

Note Requisition Approval also includes the ability to filter based on whether the logged-in user is defined as an alternate or administrative approver. See “Alternate Approvers” on page 23 for information.

Browse Information Grid

The system displays information about selected requisitions in the browse view. Without using an additional program, you can determine requisition details by scrolling horizontally.

Use standard .NET UI browse functionality to customize the display. For example, drag and drop a column heading to resequence columns, or right-click on the heading row to select other options.

Context-Sensitive Tool Bar Buttons

Context-sensitive tool bar buttons indicate which actions are available for the requisition in focus.

Buttons display in color when they represent available actions. For example, if you highlight a requisition and click the green Approve button, the button turns gray, since approval is no longer an appropriate action. However, the Reverse button, which was previously gray, changes to green to show that reversal is now a potential part of the work flow.

Right-Click Access to Related Functions

In some cases, you might want to view the approval history of a requisition, or modify it before approving.

You can access such functions directly from Requisition Approval by right-clicking on a requisition in the browse view.

The selected function displays at the bottom of the screen. The key field is already populated with the selected requisition number. Click Next to launch the program.

Enhanced Commenting Functionality

When you approve, deny, reverse, or route a requisition, you are prompted to enter optional comments.

Requisition Approval offers enhanced commenting capabilities compared with the standard approval and routing programs:

- You can enter comments of unlimited length.
- You can cut and paste text into the comments field. For example, after denying a requisition, you might paste in the manufacturer’s description of an item that you feel is a better alternative before routing the requisition back to the originator.

- The look-up on the Route To field sorts with required approvers at the top of the list.

Note The comments history for the requisition displays in the top field of the comments window.

Alternate Approvers

An additional form of filtering is available that is related to alternate and administrative approvers, who can optionally be specified in approver maintenance programs.

If you are the logged-in user and are defined as an alternate or admin, click on Alternate on the Actions menu. The system displays a list of approvers for whom you are an alternate or admin. When you select one, the browse lists only requisitions for those approvers.

Note If your user ID is not associated as an alternate or admin with any approvers that match the requisitions shown in the browse, the Alternate item does not display on the Actions menu.

After you have selected an ID from Actions|Alternate, an additional button displays on the tool bar. Use it to toggle between the full list of requisitions (subject to other filter criteria) and the list based on your status as alternate or admin for the selected primary approver.

Enhanced Reports

This release includes a set of enhancements to reporting functions in the Manufacturing and Customer Management areas within Enterprise Edition. Many reports have been rewritten using QAD Reporting Framework to provide a significantly improved reporting capability to users of the QAD .NET UI.

Note These reports are also available in add-on bundles for some earlier versions of Enterprise Edition.

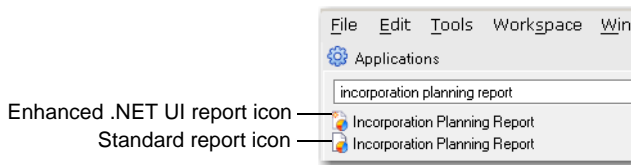
This is part of an ongoing QAD effort to upgrade reports, browses, and inquiries throughout the system, building on the advanced filtering and report-generation tools available in .NET and QAD Reporting Framework, as well as powerful browse capabilities.

Note The legacy versions of all reports are still available in their original menu locations.

You can access the new reports in several ways:

- By entering the report title in the menu search field. The search result lists two occurrences. The icon differentiates between the standard and enhanced .NET UI versions. Figure 2 shows an example.

Fig. 2
Report Icons in .NET UI



- By entering the new menu number in the menu search field. QAD .NET UI-only reports are assigned to menu numbers 25 or greater, so they are hidden on the character UI menus.

Note You cannot access a new report by entering a Progress program name.

- By navigating in the menu tree to the functionality area. The new reports appear in the same part of the menu as their standard report equivalents.

Manufacturing Reports

Table 20

New Manufacturing Reports

Legacy Menu	Report Title	Legacy Program	New Menu	New Report Title
1.5.6	Item Cost Report	ppptrp13.p	1.5.30	Same
1.5.8, 3.6.1	Stock Status Report	ppptrp01.p	1.5.32, 3.6.25	Same
1.5.9, 3.6.3	Item ABC Status Report/Update	ppptrp04.p	1.5.45, 3.6.27	Same
3.6.5	Inventory Detail Report	ppptrp08.p	3.5.29	Same
3.6.6	Inventory Detail by Location	iclorp.p	3.3	Inventory Detail by Site Browse (added functionality)
3.6.8	Current Surplus Inventory Report	ppptrp21.p	3.6.32	Same
1.5.21, 3.6.13	Inventory Valuation Report	ppptrp03.p	1.5.45, 3.6.37	Same
1.5.22, 3.6.14	Inventory Valuation by Location	ppptrp05.p	1.5.46, 3.6.38	Same
1.5.23, 3.6.15	Inventory Valuation as of Date	ppptrp06.p	1.5.47, 3.6.39	Same
1.5.24, 3.6.16	Inventory Valuation as of by Loc	ppptrp07.p	1.5.48, 3.6.40	Same
3.6.18	Stock Journal	icstjrrp.p	3.6.42	Same
3.6.20	Device History Record Report	ppptdhrp.p	3.6.44	Same
3.6.21	Item Scrap Report	icscrprp.p	3.6.23	Inventory Scrap Trans Browse (added functionality)
			3.6.45	Item Scrap Report
3.13.3	Cycle Count Results Report	icccrp01.p	3.13.27	Same
3.21.14	Transactions by Item Report	ictrrp01.p	3.21.2	Same (added functionality)
13.8.1	Product Structure by Item Report	bmpsrp.p	13.8.25	Same
13.8.2	Product Structure by Nbr Report	bmpsrp02.p	13.8.26	Same
13.12.4	Product Structure Cost Report	bmpsrp01.p	13.12.28	Same
14.13.4	Routing Report	rworop.p	14.13.28	Same
16.3.1	Work Order by Order Report	woworp.p	16.2	Work Order Browse (added functionality)
16.3.2	Work Order by Item Report	woworp01.p	16.2	Work Order Browse (added functionality)
16.3.3	Work Order Status Report	woworp02.p	16.3.27	Same
16.3.4	Work Order Cost Report	woworp05.p	16.3.28	Same
16.3.5	Work Order WIP Cost Report	woworp09.p	16.3.29	Same
16.6	Work Order Release/Print	woworl.p	16.30	Same
16.13.1	Work Order Bill Maintenance	wowamt.p	16.13.2	Work Order Bill Browse (added functionality)
16.13.3	Work Order Bill by Order Report	wowarp01.p	16.13.2	Work Order Bill Browse (added functionality)
16.13.15	Work Order Routing Report	woopr.p	16.13.39	Same
16.20.13.20	Efficiency by Work Order Report	sfoprp01.p	16.20.13.44	Same
18.22.4.13	WIP Valuation Report	reworp03.p	18.22.4.37	Same
22.4	Forecast Report	fcfsiq.p?	22.28	Same
23.7	Action Message Report	mrmprp02.p	23.6	Action Message Browse (added functionality)
23.12	Planned Order Report	mrworp11.p	23.36	Same

Legacy Menu	Report Title	Legacy Program	New Menu	New Report Title
23.14	MRP Summary Report	mrmprp11.p	23.38	Same
23.17	MRP Detail Report	mrmprp01.p	23.41	Same

Customer Management Reports

Table 21

New Customer Management Reports

Legacy Menu	Report Title	Legacy Program	New Menu	New Report Title
11.1.1.4	Call Print	fscarp.p	75.10.16.5	Same
11.1.1.5	Call Print with History	fscarp02.p	75.10.16.4	Same
11.1.1.10	Call Quote Print	fscqrp.p	75.10.16.6	Same
11.19.3	Service BOM Code Report	fsbomrp.p	75.10.20.3	Same
11.19.23	Service Std Operation Report	fsopmrp.p	75.10.20.2	Same
11.5.1.3	Contract Quote Print	fsqorp.p	75.10.16.8	Same
11.5.13.4	Contract Print	fssarp.p	75.10.16.9	Same
11.7.1.3	RMA Print	fsmrp08.p	75.10.17.7	Same
11.3.19	Classification Inquiry	fsclsfq.p	75.10.16.7	Classification Report
7.9.11.15	Shipper Validation Err Report	sosverp.p	75.10.8.14	Shipper Validation Err By Profile Report
			75.10.8.15	Shipper Validation Err By Shipper Report
7.9.17.15	Shipment Performance Report	soshprp.p	75.10.8.12	DO Shipment Performance Report
			75.10.8.13	SO Shipment Performance Report
7.9.17.17	Reason Code Analysis Report	soshprp1.p	75.10.8.10	DO Reason Code Analysis Report
			75.10.8.11	SO Reason Code Analysis Report
7.9.17.18	Item Analysis Report	soshprp2.p	75.10.8.8	DO Item Analysis Report
			75.10.8.9	SO Item Analysis Report
7.9.17.19	Customer Analysis Report	soshprp3.p	75.10.8.7	DO Customer Analysis Report
			75.10.8.6	SO Customer Analysis Report
29.22.19	Intrastat Declaration Print	iehrp.p	75.10.10.3	Same
29.22.20	Intrastat Declaration Reprint	iehrp.p	75.10.10.4	Same
11.19.14	Service Work Center Inquiry	fswcq.p	75.11.2.1	Service Work Center Browse
11.21.2	Work Code Inquiry	fsfwkiq.p	75.11.2.2	Work Code Browse
11.21.6	Invoice Sort Inquiry	fsfisiq.p	75.11.2.3	Invoice Sort Browse
11.21.10	Service Category Inquiry	fsfscq.p	75.11.2.4	Service Category Browse
11.21.18	Return Status Inquiry	fsfpstiq.p	75.11.2.5	Return Status Report
11.21.21.2	Charge Code Inquiry	fsfcgq.p	75.11.2.6	Charge Code Browse
11.21.21.6	Charge Product Line Inquiry	fsfcciq.p	75.11.2.7	Charge Product Line Browse
11.21.22.2	Multiple Time Zones Inquiry	fstzoiq.p	75.11.2.8	Multiple Time Zones Browse
11.19.18	Service Routing Inquiry	fsroi.p	75.11.2.9	Service Routing Browse
11.25.10	Expense Cost Discrepancy Report	utglcxp.p	75.11.2.10	Expense Cost Discrepancy Browse

Security Enhancements

Role Permissions Changes

Several updates have been made to Role Permissions Maintain.

- The Supplier–Withholding Tax [Entity] activity has been removed from Secured Items Not on Menu and has been moved to Secured Items on Menu.
- The BCube node has been removed from Secured Items Not on Menu. Instead, the Cube Trial Balance View activity has been added to Secured Items on Menu.
- A BDInvoice node with the activity Customer Invoice–Modify Due Date [Entity] has been added to Secured Items Not on Menu to support EDI Advanced Banking. Normally, when an invoice is included in a customer payment selection, you cannot modify it using Customer Invoice Modify. The Customer Invoice–Modify Due Date [Entity] activity is required to allow the user to modify the invoice due date using Customer Payment Selection Modify.
- A BERS node with the activities Evaluated Receipt Settlement–Create [Entity] and Evaluated Receipt Settlement–Modify [Entity], and a BERSLine node with the activity ERS Line–Create [Entity], have been added to Secured Items Not on Menu.
- The BReportTree node has been removed from Secured Items Not on Menu. Instead, the Report Tree Maintenance activity has been added to Secured Items on Menu.
- A Generalized Code Group node has been added to Secured Items Not on Menu. See “Generalized Code Groups” on page 20.

Installation and Conversion Updates

QAD Deployment Toolkit (QDT) and EE Configuration

- Configuration and Customization Scripts Added. Enterprise Edition now provides several scripts that allow you to add databases, define custom `PROPATHS`, and customize your environment.
- New System Default Settings Fields. Two fields were added to QDT that allow you to change the `qadhome` and `qadui` WebApp names for the initial environment. This allows you to have multiple environments on one Tomcat server.
- Thai Language Data Entry. You can now enable the Thai language for use in your environment. This feature allows you to use Thai characters in the data entry fields. However, the field labels will be in US English.

Conversion/Upgrade

- Upgrades Reconfigure Process Maps. QDT now updates `$TOMCAT/webapps/$QADUI/WEB-INF/conf/process-config.xml` during upgrades to ensure proper process maps operation. This makes previous process map configuration customizations unavailable. QDT backs up the original `process-config.xml` file and renames it `process-config.xml-<date>_<time>`. You must manually migrate the original settings to the new file.

Known Issues

- QAD UI-only EE 2011.1 to 2012 Upgrades. If you are upgrading only the .NET UI component from QAD EE 2011.1 to QAD EE 2012, you must load the `dltadmnetuisp9.df` data definitions file from the release media `progrs/db` directory into the production admin and empty admin databases for each environment to be upgraded. The affected tables must be unfrozen before the data definition load can begin.
- `qdtadmin.log` File Warning Messages. If you select additional languages to load in QDT, several misleading warning messages will appear in the `qdtadmin.log` file. The warnings say “Message: Translations cannot be longer than 255 characters. Some translations were truncated.” These messages can be ignored because the data being loaded is no longer valid. This will not affect the installation process or the resulting installation.

Additional System Changes and Limitations

At this point in the Enterprise Edition development cycle, differences with earlier releases as well as limitations exist in various areas:

- Not all optional modules and complementary products can be used with QAD 2012 EE. Some of these modules are planned to be available; others may be replaced by a different type of offering.
- Some limitations exist related to technical components such as databases and operating systems.
- Some specific application features that were available in previous releases of the core application are no longer available. In some cases this is intentional; in other cases, plans exist to reimplement the features for the Enterprise Edition.
- Enterprise Financials introduces many new capabilities as well as new Financial concepts. Due to differences in concepts with Standard Financials, a clear function-by-function comparison is not always possible. Certain specific functions of Standard Financials might work differently or not be supported in Enterprise Financials.

Updated Policy Regarding Source Code

Source code licenses for QAD Enterprise Applications are available on a module-by-module basis and priced separately. However, even for customers who do not purchase source code licenses, QAD has historically made a subset of source available. This includes source for frequently modified reports and inquiries, and excluded transactional programs.

The list of files supplied as part of this free subset of source has changed in the EE release. QAD is maintaining the policy of allowing modification of reports and inquiries, but is now applying a stricter criteria to qualify what programs can be modified without purchasing source. As a result of this change, customers may notice that some programs they received in previous releases are no longer available. For example, QAD previously provided *all* include (.i) files—including those not used by reports and inquiries. Delivery is now limited to .i files that are needed by reports and inquiries; for example, frame definitions.

Another change in source code involves Financial source code. The new Enterprise Financials follows a different development model, and customization of source is facilitated through a customization layer that does not require direct update to the generated source code. Therefore, source for Enterprise Financial programs is not available for purchase by customers. A small subset of traditional Financial programs that still remain in the Accounts Payable (AP), Multiple Currency (MC), and General Ledger (GL) modules have been moved to the base (OS) module and are available to customers who purchase source for that module.

Windows GUI User Interface No Longer Supported

In the Enterprise Edition of QAD Enterprise Applications, the .NET UI is the primary product user interface. GUI is no longer supported at all. Some programs can only be run in .NET UI; many operational programs can still be run in character, but the full use of the suite requires .NET UI.

Progress Results Files

In QAD Enterprise Edition, a full set of Progress Results files (.qc and .qc7 files) is not provided because customer requirements for reporting vary extensively. Instead, a sample set is provided on the media containing five valid relationships. Users can add more relationships using the Progress Results application to fit their business needs. Refer to the Progress Results documentation or contact QAD Global Services for assistance with adding relationships to the existing QC files.

Support for Optional Modules and Complementary Products

Optional Modules Not Supported in QAD 2012 EE

Project Realization Management (PRM)

PRM was removed from the Enterprise Edition. It may be restored at a later time pending product management decision regarding enhancing PRM or using another project management solution.

Centralized Order Processing (not planned)

Centralized Order Processing (COP) is not supported in Enterprise Edition, either for sales or purchase orders. Other order management features can be used with QAD EE.

This means that you cannot enter an SO or PO in one domain and process the SO shipment or PO receipt in another domain. However, you can open an SO or PO with the header site belonging to one entity and the line sites belonging to different entities in the same domain. In this scenario, the appropriate cross-company postings are registered.

You can also use Enterprise Material Transfer for cross-domain sourcing of items. Enterprise Edition features enhancements to the EMT functionality that make this method easier to use.

Complementary Products Not Supported in QAD 2012 EE

- QAD Manufacturing Execution Workbench (MEW) (unplanned)
- QAD Distributed Order Management (DOM) (unplanned)
- Trade Management (TrM) and APM Medical (unplanned)
- The Planner (unplanned)
- Multi-Level Pegging (unplanned)
- Q/LinQ and DataSync. The features of both these products are now included in QXtend.

Installation and Conversion Limitations

Installation

- Multiple-tier installation through QAD Deployment Toolkit (QDT) is not supported.

- Service pack only media are not provided. Each release is a full install, although database upgrade utilities are provided.

Conversions

To ensure the highest level of quality and success for customers converting to the QAD 2012 EE release, the participation of QAD or certified QAD partner services is strongly recommended. As a result, the conversions are disabled on the release media to ensure conversion requirements are properly reviewed and planned by QAD prior to any conversion activities.

Operating Systems and Platforms

Oracle is not supported; only Progress database can be used.

Performance Tuning

Please consult with QAD prior to implementing a Wide Area Network configuration for QAD 2012 EE.

General Limitations

Multiple Databases Not Fully Supported

QDT does not currently support the installation of multiple databases. In addition, the application is limited in the support for multiple databases.

Because of the use of proxies through an App Server to update financial tables, you cannot switch databases if any activity may update financial tables. Currently, this means that a user cannot connect to another database from the UI. The only switching that is allowed is from the low-level DRP and EMT routines where it is known that the resulting updates do not affect financial data.

EMT itself works correctly in both single (cross-domain) and multiple database implementations. When using multiple databases, users must separately log in to the databases; it is not possible to switch between databases from the menu.

GL consolidation between multiple databases is not fully supported.

Some Financial Utilities Not Available

Delete/archive utilities are planned. Other utilities will be created as needed.

Handling of Euro Conversion Deferred

The programs for converting a currency to the Euro have not been updated to work with the Enterprise Financials. This will be addressed when a need for such conversion exists.

Financial Source Not Available

Since the Enterprise Financials use a new component-based methodology, they cannot be modified in the way traditional MFG/PRO programs were customized. Source code for the financial modules is no longer provided. Customization templates can be used to add business logic to existing Financial programs without making invasive code changes. Documentation of the source code required for creating APIs is

supplied in HTML format. Customization features will be expanded in future releases to support additional features such as including new tables or new components.

System Cross-Reference Not Available

Earlier versions of QAD Applications provided a system cross-reference that let you see where tables, fields, and programs were referenced. This is no longer available, since it did not apply to the new component architecture.

Internationalization Features

Support for country-specific requirements is being addressed in each release of Enterprise Applications. Many of these features that were previously provided as localization or partner offerings are now being provided as generic features of the product.

For a complete list of internationalization features and planned country support, see the QAD Support Web site.