

QAD Enterprise Applications 2013.1 Combined Release Notes

Updated October 2013

The September 2013.1 release of QAD Enterprise Applications includes new features and fixes in Enterprise Edition, as well as releases of several QAD add-on products.

This document compiles Release Notes from Enterprise Edition and the add-on products.

For the latest documentation on QAD products, see the Document Library:

<http://www.qad.com/documentlibrary>

The library includes historical release notes from earlier versions.

Release notes are included for the following products:

<i>QAD Enterprise Edition 2013.1</i>	2
<i>.QAD .NET User Interface</i>	15
<i>QAD Business Intelligence 3.9</i>	24
<i>QAD Business Process Management 1.3</i>	33
<i>QAD Configurator 5.4.1</i>	36
<i>QAD Customer Management Reports 1.5</i>	38
<i>QAD Customer Self Service 5.2.3</i>	40
<i>QAD Enterprise Asset Management 12.6</i>	41
<i>QAD Field Service Scheduler 3.2</i>	57
<i>QAD Mobile Field Service 3.3.1</i>	58
<i>QAD Planning and Scheduling Workbenches 3.3.5</i>	59
<i>QAD QXtend 1.8.4</i>	66
<i>QAD Supply Chain Portal 13</i>	70
<i>QAD Warehousing</i>	72

QAD Enterprise Edition 2013.1

QAD Enterprise Applications 2013.1 – Enterprise Edition (QAD 2013.1 Enterprise Edition, or QAD 2013.1 EE) includes product changes made between February 27, 2013, and August 26, 2013.

This is largely a maintenance release, consisting primarily of fixes, rather than a large number of new features or enhancements, although some new features are included, mainly in Enterprise Financials. For detailed information about individual fixes, see the Product Changes & Advisories area on QAD’s Online Support Center:

http://support.qad.com/product_changes/

Note QAD 2013.1 EE is supported by the latest release of the QAD .NET User Interface. For details, “QAD .NET User Interface” on page 15.

Because of the new product direction with the Enterprise Edition, some features that existed in earlier versions of the core application are no longer available. Others are planned for future development. See “Additional System Changes and Limitations” on page 11 for information.

Important Update for Progress OpenEdge 10 Users

The 2013.1 EE installation media includes 2013EF (Enhanced Financials) Patch 4. QAD has determined that 2013.1 EE cannot support OE10.

2013EF Patch 5 will resolve this issue. Customers using OE10 should wait until 2013EF Patch 5 is available before implementing QAD 2013.1 EE.

Feature Changes

.NET UI Dashboards

The latest version of the QAD .NET UI features a new navigation concept: dashboards.

Dashboards bring together browses, Web pages, business intelligence, and metrics within panels. Each panel offers a quick summary; to find out more, you click on the panel. As a user, you can create, edit, and delete dashboards directly in the QAD .NET UI. To create a new dashboard, in the Applications pane, open Dashboards | Create Dashboard and add panels. You can double or triple the width of panel. You can also copy and edit an existing dashboard. As an administrator, you can share the dashboard with others and assign it to one or more roles. For more information on using dashboards, see the *Introduction to QAD Enterprise Applications User Guide*. System administrators can change the maximum number of panels allowed in a dashboard, copy dashboards between systems, and modify access and display settings. For additional information on configuring dashboards, see the *QAD .NET UI Administration Guide*.

You can start creating dashboards right away, but you can also get sample dashboards in three functional areas—Financials, Customer Management, and Manufacturing—that can be associated with roles in your system. The sample dashboards are available for download from the QAD Store (<http://store.qad.com>). To install the sample dashboards, use the package installation tool included with the download. After installing the dashboards, edit the role assignments for dashboards.

Daybook Masks

Daybook masks allow you to specify a selection of daybooks and daybook groups that you want to lock at GL period closing. This functionality prevents postings to these daybooks for the current entity and GL period. You can also lock daybooks for groups of entities. See “Multi-Entity Processing” for more

information on entity groups.

Daybook masks introduce a greater level of granularity to the closing process by enabling you to build separate daybook masks for each stage of your closing process. You can also use daybook masks to prevent postings to particular accounting layers such as the US GAAP layer and local GAAP layers.

Use Daybook Mask Create (25.21.5.1.1) to create a daybook mask by selecting daybooks or daybook groups that belong to the shared set for the current domain. Daybook masks cannot include periodic costing daybooks.

Entity GL Period Lock by Daybook

Use Entity GL Period Lock by Daybook (25.21.5.6) to apply a daybook mask to a GL period.

When a daybook mask is applied to a GL period, the overall status of the GL period remains Open, even if certain postings are blocked depending on the daybooks defined in the mask. You can only apply active daybook masks to GL periods, and only one mask can be associated with a GL period at any time.

There are some restrictions on applying daybook masks to GL periods. You cannot apply a daybook mask to a GL period if:

- The GL period is a year-end closing period.
- The daybook mask contains customer invoice daybooks with operational control, and Invoice Post and Print is running.
- The daybook mask contains daybooks of type journal entry with operational control, and there are operational transactions outstanding.

Note To overcome this restriction, run Operational Transaction Post and then apply the mask.

- The daybook mask contains revaluation daybooks and there are unposted revaluations for the GL period.
- The daybook mask contains daybooks of type AP matching, and AP matching postings for the GL period exist in the transient layer.

To remove a daybook mask from a GL period, clear the contents of the Daybook Mask field in Entity GL Period Lock by Daybook, and click Save.

Note Locking a GL period that has a daybook mask applied to it removes the daybook mask automatically; removing the lock from the GL period does not reapply the daybook mask.

New Programs for Daybook Masks

Table 1

New Programs for Daybook Masks

Menu	Label	Program
25.21.5.1.1	Daybook Mask Create	BCMask.Create
25.21.5.1.2	Daybook Mask Modify	BCMask.Modify
25.21.5.1.3	Daybook Mask View	BCMask.View
25.21.5.1.4	Daybook Mask Delete	BCMask.Delete
25.21.5.1.5	Daybook Mask Copy	BCMask.Copy
25.21.5.6	Entity GL Period Lock by Daybook	BPeriod.LockJournalPeriod

Multi-Entity Processing

Multi-entity processing enables you to group entities together, so that you can save time by carrying out period end activities for multiple entities at once without the need to switch between entities. Multi-entity activities reduce data maintenance time and provide better control over routine and largely repetitive period end tasks. Entity groups are stored at database level.

To create an entity group, use Entity Group Create (36.1.1.2.5). The current entity must be included in the entity group, and different entity groups can be used for each of the closing activities.

The following activities are possible at entity group level:

- Entity GL Period Lock by Daybook
- Revaluation Simulate
- Revaluation Post
- Entity GL Period Lock
- Entity GL Period Report

Important If you add the current entity to an entity group for the first time, you must log out and log in again before you can see the option to run an activity for an entity group.

To run Entity GL Period Lock by Daybook, Entity GL Period Lock, or Entity GL Period Report for an entity group, select the entity group from the Apply To field in the relevant activity. Similarly, use the Simulate For and Post Simulation For fields to select an entity group in Revaluation Simulate and Revaluation Post respectively. You can only select an entity group that contains the current entity; other entity groups are not visible.

The following behavior occurs when running activities on entity groups:

- If the activity fails for one entity within the entity group, you are informed of the entities that the activity failed for. The activity completes for all remaining entities. For example, if you do not have role permission for a specific activity for an entity in the group, an error displays for that entity; the activity completes for the other entities.
- If the start date or end date for the selected GL period is not the same for all entities in the group, a warning displays.
- For activities that involve running a consistency check, by default all entities included in the group are selected for the check; these entities display in the Entity Code field. Clicking within this field removes the selection of all entities apart from the entity that you click on.

Entity GL Period Lock by Daybook

A new activity, Entity GL Period Lock by Daybook, has been added in QAD Enterprise Applications 2013.1. For an explanation of this activity see “Entity GL Period Lock by Daybook”.

The following behavior occurs when running Entity GL Period Lock by Daybook on entity groups:

- If the daybook shared set is not the same for all of the entities in the entity group, an error occurs.

Revaluation Simulate

The following behavior occurs when running Revaluation Simulate on entity groups:

- The system generates a separate rev number for each entity in the group, and displays the rev number for the current entity in the Rev Number field.

- A progress bar appears at the bottom of the screen to show the entity that Revaluation Simulate is currently processing, and how many entities remain to be processed. If you click Stop, Revaluation Simulate stops processing after the entity currently processing completes.
- When you select the Include Statutory Currency field and run simulation on an entity group, if some entities in the group do not have statutory currency enabled, an error appears and Revaluation Simulate completes only for entities with statutory currency enabled. If you have selected both Include Base Currency and Include Statutory Currency, then Revaluation Simulate completes for all entities selected, but the statutory currency revaluation only completes for those entities that have statutory currency enabled.
- After running Revaluation Simulate, the results appear in a grid on the bottom half of the screen. These results apply to the current entity only; if you want to see the details for each entity in the group, run the simulation entity by entity or run revaluation view for each entity.

Revaluation Post

The following behavior occurs when running Revaluation Post on entity groups:

- A progress bar appears at the bottom of the screen to show the entity that Revaluation Post is currently processing, and how many entities remain to be processed. If you click Stop, Revaluation Simulate stops processing after the entity currently processing completes.
- If there are posting restrictions on either the current GL period or the next GL period for any of the entities in the entity group, an error displays when you run Revaluation Post. This is because the revaluation posting reverses in the next GL period.
- When running Revaluation Post for an entity group, the system posts to the current entity based on the contents of the Posting grid. The system posts to other entities in the group based on the selection criteria specified in the search fields above the grid. If you search for revaluations and then clear the Selected field in one or more of the resulting rows in the grid, a message displays informing you of the difference in behavior when posting to the current entity and when posting to other entities in the group. If you want to continue with the postings, click Yes.

Multi-Entity Closing View

The Multi-Entity Closing View browse collection lets you determine the closing status of periods across all domains and entities in the database.

You can view:

- The status of the period: open, closed, frozen, or reported.
- Whether or not there is a daybook mask code assigned to a period.
- Which of the application areas are open or closed for a period; available ledgers are Inventory, Purchases, Sales, and GL.
- Whether or not there are unposted operational transactions in a period.
- Whether or not there are posted revaluations in a period.
- Supplier invoices with an allocation status of Transient Allocation.

The data displayed in the browse is sorted by year, then period, then domain, and finally by entity.

The Pending Invoices tab contains a browse related to the GL period selected in the main browse; this browse displays any sales orders that were shipped in the selected period and are ready for invoicing.

New Programs for Multi-Entity Processing

Table 2

New Programs for Multi-Entity Processing

Menu	Label	Program
36.1.1.2.5	Entity Group Create	BCompanyGroup.Create
36.1.1.2.6	Entity Group Modify	BCompanyGroup.Modify
36.1.1.2.7	Entity Group View	BCompanyGroup.View
36.1.1.2.8	Entity Group Delete	BCompanyGroup.Delete
25.21.5.6	Entity GL Period Lock by Daybook	BPeriod.LockJournalPeriod
	Multi-entity Closing View	

Modified Programs for Multi-Entity Processing

Table 3

Modified Programs for Multi-Entity Processing

Menu	Label	Program
25.4.2.3	Entity GL Period Lock	BPeriod.LockAccountingPeriod
25.4.2.5	Entity GL Period Report	BPeriod.ReportAccountingPeriod
25.21.1.1	Revaluation Simulate	BRevaluation.Simulate
25.21.1.5	Revaluation Post	BRevaluation.Post

SEPA

The Single Euro Payments Area (SEPA) is a payment-integration initiative of the European Union (EU) to simplify electronic bank transfers. Within SEPA, all Euro payments are treated as domestic payments.

A SEPA reference number is an alphanumeric string, up to 25 characters long. The letters RF always appear at the beginning of a SEPA reference. The two characters following RF are check digits and the remaining characters make up the actual reference.

For customer payments, SEPA payment references are generated within the system and saved as a unique identifier for each transaction. For supplier invoices received, the supplier generates the SEPA payment reference and the AR clerk enters the reference in the system. The SEPA reference is then validated by the system.

The Payment Reference fields on customer and supplier screens also enable you to use SEPA to allocate payments. SEPA references are also printed on financial reports such as Customer Invoice Print (27.1.1.4) and Supplier Remittance Print (28.9.9.8). The SEPA payment reference is also used for matching in Process Incoming Bank Files (31.1.6) and is integrated in the XML message of the outgoing supplier payment file.

A payment format can be defined as SEPA by selecting the SEPA field in Payment Format Maintenance (25.11.1). When a customer or supplier bank account is set up to use SEPA, then all transactions are expected to include a valid SEPA reference number. When SEPA messages are switched on at entity level, any deviation from SEPA format returns a warning message. These warning messages do not prevent you from proceeding.

Important If you are running QAD 2013 Patch 3 and above and you are using SEPA when processing incoming bank files and receiving payment reference information, you must apply a schema change. If you are running QAD 2013.1 EE Patch 3 and above, no change is required.

Modified Programs for SEPA

Table 4

Updated Programs for SEPA

Menu	Label	Program
25.11.1	Payment Format Maintenance	BPaymentFormat.MaintainPayFormat
36.1.1.2.1	Entity Create	BCompany.Create
36.1.1.2.2	Entity Modify	BCompany.Modify
27.1.1.1	Customer Invoice Create	BDInvoice.Create
27.1.1.2	Customer Invoice Modify	BDInvoice.Modify
27.6.4.1	Customer Payment Create	BDDocument.Create
31.1.1	Banking Entry Create	BBankEntry.Create
31.1.2	Banking Entry Modify	BBankEntry.Modify
31.1.5	Banking Entry Allocate	BBankEntry.Allocate
28.1.1.1	Supplier Invoice Create	BCInvoice.Create
28.1.1.2	Supplier Invoice Modify	BCInvoice.Modify
28.9.3.1	Supplier Payment Create	BCDocument.Create
28.9.4.1	Supplier Payment Selection Create	BPaymentSelection.Create
28.9.4.2	Supplier Payment Selection Modify	BPaymentSelection.Modify

Table 5

Updated Financial Reports for SEPA

Menu	Label	Program and Crystal Report Name	QRF Report
27.1.1.4	Customer Invoice Print	BDebtorReport.DebtorInvoicePrint	QAD_BDebtorReport_DebtorInvoicePrint QAD_BDebtorReport_DebtorInvoicePrint_Excel
28.9.9.8	Supplier Remittance Print	BPaymentSelectionReport.Remittance	QAD_BPaymentSelectionReport_Remittance QAD_BPaymentSelectionReport_Remittance_Excel
27.6.8.4	Customer Direct Debit Print	BDDocumentReport.DDocumentReportAutoIncasso	

Note Payment Reference is not printed on Customer Direct Debit Print by default, but you can add it.

Table 6

Updated Operational Reports for SEPA

Menu	Label	Program
7.13.4	Invoice Post and Print	soivpst.p
7.13.12	Invoice Print or Reprint	soivrp10.p

Receiver Matching API

More and more companies create their supplier invoices in third-party applications, and these external invoices must be registered in QAD EE because companies are legally required to store tax details exactly as recorded on the official invoice issued by the supplier. As a result, QAD has extended the Receiver Matching API so that it can now update existing supplier invoices.

Until now, the Receiver Matching API could only create new supplier invoices. The tax details of supplier invoices created by the external application could previously differ from the supplier invoices created by the Receiver Matching API.

The extended Receiver Matching API Integration can create new supplier invoices as before. However, the API can now also update existing supplier invoices received from a third-party application in combination with additional posting lines to complete the Accounts Payable process. You can also use the API to add one or more additional posting lines with extra charges. The supplier invoices are created based on the information in the purchase order and receipt, in addition to the matching information passed (year, daybook, and voucher number or invoice registration number).

The extended Receiver Matching API can:

- Create supplier invoices and perform receiver matching using existing functionality.
- Process supplier invoices created externally and passed to QAD EE.
- Add one or more posting lines to record additional:
 - Costs
 - Costs with posting to a GL account of type Open Item
 - Costs including SAFs
 - Costs with posting to a GL account of type Tax
 - Costs in base currency and in statutory currency

Support for Budgets on Oracle

Budgets are now supported if you are running QAD EE with an Oracle database. However, there is a limitation of 12 budget levels when running on Oracle.

Segregation of Duties

The superuser role is specially configured to provide assigned users with access to all resources in the system. This role should only be assigned to a small number of trusted users. Prior to activating segregation of duties, it is now recommended that you select the Excluded from SOD field for the superuser role in SOD Role Exclusion (36.3.27.8). Excluding the superuser role from segregation of duties means that no segregation of duties violations will be raised for this role, which speeds up the activation of segregation of duties.

If you attempt to activate segregation of duties in SOD Configuration (36.3.27.14) and the Excluded from SOD field is not selected for the superuser role, a warning displays to inform you that the activation may not process properly. You are then presented with the option to activate segregation of duties from the command line, which is a new option, or to continue with the activation using the UI. It is recommended that you use the command line to activate segregation of duties if the Excluded from SOD field is not selected for the superuser role.

Modified Program for Segregation of Duties

Table 7

Modified Program for Segregation of Duties

Menu	Label	Program
36.3.27.14	SOD Configuration	BSystem.SODConfigure

Periodic Costing

New reports are available to track inventory and shop floor movements, inventory and WIP balances, WO close variances, and item transactions.

Additionally, changes have been made to Periodic Cost Calculation and Periodic Costing Initialize to support cost calculations for WIP of advanced repetitive orders.

New Reports

Table 8 lists the new reports for periodic costing.

Table 8

New Reports for Periodic Costing

Menu	Label
30.5.19.1	Inventory and SF Movement Report
30.5.19.2	Inventory and WIP Balance Report
30.5.19.3	WO Close Variance Item Summary Report
30.5.13.17	Item Transaction Report

Modified Programs

Table 9 lists the modified programs for periodic costing.

Table 9

Modified Programs for Periodic Costing

Menu	Label	Program
30.5.7.1	Periodic Cost Calculation	pccscal.p
30.5.1.23	Periodic Costing Initialize	pcinitmt.p
30.5.15.2	PC WO WIP History Report	pcworp03.p

Receiving Legal Documents Enhancements

Legal Documents functionality has been updated to support scenarios in which PO return shippers must be unconfirmed so that the associated legal documents can be canceled. For example, this feature is needed when:

- The incorrect quantity was recorded in a PO return.
- The return should not have been recorded at all and must be reversed.
- The fiscal data associated with the legal document is incorrect.

To make these functions available, Non-Sales Shipper Unconfirm (3.15.2) has been extended to PO Returns shippers. Additionally, Non-Sales Shipper Confirm (3.15.1) has been extended to allow it to reconfirm RCT-PO shippers and ISS-PRV shippers.

Table 10 contains the modified programs for receiving legal documents.

Table 10

Modified Programs for Receiving Legal Documents

Menu	Label	Program
3.15.1	Non-Sales Shipper Confirm	icshconf.p
3.15.2	Non-Sales Shipper Unconfirm	icshcl.p

Additional New Fields

Fields have been added to some programs to enhance functionality or improve performance. These include:

- A new RMA Iss. Mn/Mx Price Check field in RMA/RTS Control (11.7.24) lets you specify the way in which RMA Maintenance manages RMA issue lines when both of the following are true:

- Because of a manually entered discount or a discount type price list, the Net Price of the item on the RMA issue line falls either below the minimum or above the maximum price in the item price list.
- There is no warranty or contract set, or the covered amount is zero.

The field controls whether the system displays an error message or only a warning when the net price is below the minimum or above the maximum price.

Performance Notes

- QAD 2013.1 EE performance is comparable with QAD 2013 EE.
- Reduction in disk writes using Progress version OE11.1.
- Improved record read rates using OE11.1.

Installation and Conversion Updates

QAD Deployment Toolkit (QDT) and EE Configuration

Bulk Data Load

If the environment being configured contains a complete data set, you can now select an optional bulk load feature. This is only an option when loading complete data sets (including OIDs). Bulk data load is performed without integrity to speed up the demo data loading process. Refer to the Progress documentation for more information about the bulk load process.

Custom Databases

Beginning with 2013.1 Enterprise Edition, you can add a custom database to the compile during Enterprise Edition installation by including the database in the `extradb.pf` file.

Known Issues

Patch Requirement for Progress OpenEdge 10 Users

The 2013.1 EE installation media includes 2013EF (Enhanced Financials) Patch 4. QAD has determined that 2013.1 EE cannot support OE10.

2013EF Patch 5 will resolve this issue. Customers using OE10 should wait until 2013EF Patch 5 is available before implementing QAD 2013.1 EE.

Synchronization Step Error

When executing a conversion to 2013.1 EE using the conversion enabled QDT (`qdt_2.13.101`), the following error may occur during the Limited Synchronize or the Full Synchronize step:

```
S=<BLF-435,An unexpected system error has occurred. Please contact your
system administrator.
ERROR: Invalid domain. Please re-enter.
tt_msg_sev      = 7
tt_msg_nbr      = 6171
tt_msg_data     =
tt_msg_context = ,0,,
```

```

tt_msg_field    =
tt_msg_index    = 2,,>
S=<BLF-435,An unexpected system error has occurred. Please contact your
system administrator.
ERROR: Invalid domain. Please re-enter.
tt_msg_sev      = 7
tt_msg_nbr      = 6171
tt_msg_data     =
tt_msg_context  = ,0,,
tt_msg_field    =
tt_msg_index    = 3,,>

```

The error may appear in the following log files:

```

qdtadmin.log file
BSystem.ApiSynchronise.out log

```

This error is a result of an application defect during the login step at the start of the synchronization process. It does not cause the conversion process to fail and it does not affect the data being converted. The only consequence of this error is the potential for confusion. This error should be ignored.

Additional System Changes and Limitations

At this point in the Enterprise Edition development cycle, differences with earlier releases as well as limitations exist in various areas:

- Not all optional modules and complementary products can be used with QAD 2013.1 EE. Some of these modules are planned to be available; others may be replaced by a different type of offering.
- Some limitations exist related to technical components such as databases and operating systems.
- Some specific application features that were available in previous releases of the core application are no longer available. In some cases this is intentional; in other cases, plans exist to reimplement the features for the Enterprise Edition.
- Enterprise Financials introduces many new capabilities as well as new Financial concepts. Due to differences in concepts with Standard Financials, a clear function-by-function comparison is not always possible. Certain specific functions of Standard Financials might work differently or not be supported in Enterprise Financials.

Updated Policy Regarding Source Code

Source code licenses for QAD Enterprise Applications are available on a module-by-module basis and priced separately. However, even for customers who do not purchase source code licenses, QAD has historically made a subset of source available. This includes source for frequently modified reports and inquiries, and excluded transactional programs.

The list of files supplied as part of this free subset of source has changed in the EE release. QAD is maintaining the policy of allowing modification of reports and inquiries, but is now applying a stricter criteria to qualify what programs can be modified without purchasing source. As a result of this change, customers may notice that some programs they received in previous releases are no longer available. For example, QAD previously provided *all* include (.i) files—including those not used by reports and inquiries. Delivery is now limited to .i files that are needed by reports and inquiries; for example, frame definitions.

Another change in source code involves Financial source code. The new Enterprise Financials follows a different development model, and customization of source is facilitated through a customization layer that does not require direct update to the generated source code. Therefore, source for Enterprise Financial programs is not available for purchase by customers. A small subset of traditional Financial programs that still remain in the Accounts Payable (AP), Multiple Currency (MC), and General Ledger (GL) modules have been moved to the base (OS) module and are available to customers who purchase source for that module.

Windows GUI User Interface No Longer Supported

In the Enterprise Edition of QAD Enterprise Applications, the .NET UI is the primary product user interface. GUI is no longer supported at all. Some programs can only be run in .NET UI; many operational programs can still be run in character, but the full use of the suite requires .NET UI.

Progress Results Files

In QAD Enterprise Edition, a full set of Progress Results files (.qrc and .qrc7 files) is not provided because customer requirements for reporting vary extensively. Instead, a sample set is provided on the media containing five valid relationships. Users can add more relationships using the Progress Results application to fit their business needs. Refer to the Progress Results documentation or contact QAD Global Services for assistance with adding relationships to the existing QC files.

Support for Optional Modules and Complementary Products

Optional Modules Not Supported in QAD 2012 EE

Project Realization Management (PRM)

PRM was removed from the Enterprise Edition. It may be restored at a later time pending product management decision regarding enhancing PRM or using another project management solution.

Centralized Order Processing (not planned)

Centralized Order Processing (COP) is not supported in Enterprise Edition, either for sales or purchase orders. Other order management features can be used with QAD EE.

This means that you cannot enter an SO or PO in one domain and process the SO shipment or PO receipt in another domain. However, you can open an SO or PO with the header site belonging to one entity and the line sites belonging to different entities in the same domain. In this scenario, the appropriate cross-company postings are registered.

You can also use Enterprise Material Transfer for cross-domain sourcing of items. Enterprise Edition features enhancements to the EMT functionality that make this method easier to use.

Complementary Products Not Supported in QAD 2013.1 EE

- QAD Manufacturing Execution Workbench (MEW) (unplanned)
- QAD Distributed Order Management (DOM) (unplanned)
- Trade Management (TrM) and APM Medical (unplanned)
- The Planner (unplanned)
- Multi-Level Pegging (unplanned)
- Q/LinQ and DataSync. The features of both these products are now included in QXtend.

Installation and Conversion Limitations

Installation

Service pack only media are not provided. Each release is a full install, although database upgrade utilities are provided.

Conversions

To ensure the highest level of quality and success for customers converting to the QAD 2013.1 EE release, the participation of QAD or certified QAD partner services is strongly recommended. As a result, the conversions are disabled on the release media to ensure conversion requirements are properly reviewed and planned by QAD prior to any conversion activities.

Operating Systems and Platforms

Support for an Oracle database is not generally available; only Progress database can be used.

Note An Oracle version is available for Early Adopters only.

Performance Tuning

Please consult with QAD prior to implementing a Wide Area Network configuration for QAD 2013.1 EE.

General Limitations

Multiple Databases Not Fully Supported

QDT does not currently support the installation of multiple databases. In addition, the application is limited in the support for multiple databases.

Because of the use of proxies through an App Server to update financial tables, you cannot switch databases if any activity may update financial tables. Currently, this means that a user cannot connect to another database from the UI. The only switching that is allowed is from the low-level DRP and EMT routines where it is known that the resulting updates do not affect financial data.

EMT itself works correctly in both single (cross-domain) and multiple database implementations. When using multiple databases, users must separately log in to the databases; it is not possible to switch between databases from the menu.

GL consolidation between multiple databases is not fully supported.

Some Financial Utilities Not Available

Delete/archive utilities are planned. Other utilities will be created as needed.

Handling of Euro Conversion Deferred

The programs for converting a currency to the Euro have not been updated to work with the Enterprise Financials. This will be addressed when a need for such conversion exists.

Financial Source Not Available

Since the Enterprise Financials use a new component-based methodology, they cannot be modified in the way traditional MFG/PRO programs were customized. Source code for the financial modules is no longer

provided. Customization templates can be used to add business logic to existing Financial programs without making invasive code changes. Documentation of the source code required for creating APIs is supplied in HTML format. Customization features will be expanded in future releases to support additional features such as including new tables or new components.

System Cross-Reference Not Available

Earlier versions of QAD Applications provided a system cross-reference that let you see where tables, fields, and programs were referenced. This is no longer available, since it did not apply to the new component architecture.

Internationalization Features

Support for country-specific requirements is being addressed in each release of Enterprise Applications. Many of these features that were previously provided as localization or partner offerings are now being provided as generic features of the product.

For a complete list of internationalization features and planned country support, see the QAD Support Web site.

.QAD .NET User Interface

These release notes include information about QAD .NET UI for QAD Enterprise Applications 2013.1 – Enterprise Edition (QAD .NET UI 3.0.1).

Review this document *before* proceeding with any phase of a QAD .NET UI implementation.

These release notes include the following sections:

Installation and Configuration Information 15

Application Changes 20

Reporting Framework Changes 21

Programs in Terminal Mode Only 21

Installation and Configuration Information

The following summarizes installation and configuration changes for this version of the QAD .NET UI.

For information on the QAD .NET UI release history, see the *Platform and Product Availability Guide*, available from the General Reference section of the QAD support site (<http://support.qad.com>).

The QAD Document Library (<http://www.qad.com/documentlibrary/>) offers a complete set of all QAD user guides, training guides, and other materials.

Note If upgrading from a previous version, be sure to review the release notes for the versions between your current version and this version.

Cumulative Patch Information

Important Before installing the QAD .NET UI 2013, be sure to go to the QAD Store (<http://store.qad.com>) to check for the latest cumulative patch to QAD .NET UI 2013.1. You must install the patch after installing the QAD .NET UI.

Release Summary

QAD .NET UI Version: 2013.1 EE (3.0.1)

Product Versions: QAD Enterprise Applications 2013.1 – Enterprise Edition

Microsoft .NET Framework Version: 4

Microsoft .NET Framework 4 must be installed on client machines. You can download and install it from the Microsoft Download Center (<http://www.microsoft.com/en-us/download/details.aspx?id=17851>).

Tomcat Versions: 5.5.x, 6.0.x, and 7.0.x.

Operating System: The QAD .NET UI client runs on Windows XP SP3, Windows Vista, Windows 7, and Windows 8 (Desktop Mode). The QAD .NET UI can run on 64-bit Windows, but only in 32-bit mode.

Microsoft Internet Explorer Version: 9 or higher. If running Windows XP SP3, you can use Internet Explorer 8, but see “HTML5 Process Maps and Internet Explorer” on page 18.

The Connection Manager SSH implementation uses the jSch component by JCraft, Inc., distributed in accordance with the license agreement (<http://www.jcraft.com/jsch/LICENSE.txt>).

Supported Languages

The user interface supports the following languages in this release:

Chinese (Simplified)	English (US)	Italian	Portuguese (Brazilian)
Chinese (Traditional)	French	Japanese	Spanish (Castilian)
Dutch	German	Polish	Spanish (Latin American)

The following languages have some support, but new terms added in this release may appear in English:

Bulgarian	Greek	Norwegian	Slovenia
Czech	Hungarian	Romanian	Swedish
Danish	Korean	Russian	Turkish
Finnish	Lithuanian	Slovak	Ukrainian

Georgia SoftWorks Windows SSH or Telnet Server Installation

The QAD .NET UI uses an SSH or telnet server for two purposes:

- On the database server, it is used to run a pool of sessions that support maintenance programs, reports, and inquiries.
- It enables the client terminal interface for programs that only run in terminal mode (see “Programs in Terminal Mode Only” on page 21) as well as any custom programs that do not conform to QAD programming standards.

As of the QAD .NET UI 2013 release, the QAD .NET UI now supports secure shell (SSH) as well as telnet. You can use either SSH or telnet; the default is now to use SSH. Typically, the SSH or telnet server runs on a UNIX (or Linux) machine. If you plan to use a UNIX machine for the SSH server, QAD recommends using the SSH daemon, which comes standard on all UNIX distributions. If you plan to use a UNIX machine for the telnet server, you can use the default telnet service provided with the operating system.

If you want to run the SSH or telnet server on a Windows machine rather than a UNIX (or Linux) machine, use the Georgia SoftWorks (GSW) SSH Server or Telnet Server. This software is not included on the QAD .NET UI installation media: you must download the latest version of the software to obtain the most recent patches and functionality from Georgia SoftWorks:

<http://www.georgiasoftworks.com/>

For the Georgia SoftWorks SSH Server, see:

http://www.georgiasoftworks.com/products/ssh2/ssh2_server.php

For the Georgia SoftWorks Telnet Server, see:

<http://www.georgiasoftworks.com/products/uts/overview.php>

Refer to the Georgia SoftWorks documentation for installation information as well as software and system sizing requirements.

The Georgia Softworks Power Features pack provides a session monitor, which is helpful for troubleshooting connection issues.

Registering the Georgia SoftWorks Software

To register the software, you provide a product ID to Georgia SoftWorks so that a serial number can be generated for your product. The serial number identifies server hardware and software components. If these components change or are upgraded, contact Georgia SoftWorks about generating a new product ID and serial number.

Important If you need to reinstall or are planning to move your installation to a different platform, or if you are a sales agent or a distributor, include that information on the registration.

- 1 Select the Registration icon from the program group in the Start menu.
- 2 In the Georgia SoftWorks Product Registration window, enter your customer information. The information that displays in the Product Information section is system-generated.
- 3 Set Sessions Requested to 100. This is the number QAD automatically supplies with your registration.
- 4 Choose Save to File to save this information, or choose Print. Then, follow the appropriate step to supply the product ID to Georgia SoftWorks:
 - a E-mail the saved registration form file to Georgia SoftWorks at:
registration@georgiasoftworks.com
When your form is received, a serial number is generated for your product and is returned to you by e-mail.
 - b FAX the printed registration form to Georgia SoftWorks at 706-265-1020. When your form is received, a serial number is generated for your product and is returned to you by FAX.

When you receive your serial number, return to the Georgia SoftWorks Product Registration window and enter it in the appropriate field in the registration form. Click Register.

Tomcat Configuration

As part of the software prerequisites for installing QAD Enterprise Edition, you must install the Tomcat web server in the \$CATALINA_HOME directory as described in the *QAD Enterprise Applications – Enterprise Edition Installation Guide*.

Note When you install Tomcat, be sure to update the tomcat-users.xml file in the /conf directory to include user, password, and role settings for the admin and pronav users. For example:

```
<?xml version='1.0' encoding='utf-8'?>
<tomcat-users>
  <user name="tomcat" password="tomcat" roles="tomcat" />
  <user name="role1" password="tomcat" roles="role1" />
  <user name="both" password="tomcat" roles="tomcat,role1" />
  <user name="admin" password="mfgpro" roles="qadadmin,manager,manager-gui,admin,pronav" />
  <user name="pronav" password="editor" roles="pronav" />
</tomcat-users>
```

Process Maps Installation

The process maps are delivered separately from the QAD .NET UI. The process maps for QAD Enterprise Applications 2013.1 – Enterprise Edition are included with the QAD 2013.1 EE release media and are available on the QAD Store (<http://store.qad.com>). The QAD Deployment Toolkit (QDT) installs the process map components (including the viewer and editor) along with the process map content as part of the overall installation process for the product. However, you should then get the latest process map content for QAD 2013.1 EE from the QAD Store.

Process Map Configuration Settings

QDT installs the process map viewer, editor, and related components on the home server as a stand-alone web application named pronav (tomcat/webapps/pronav). The following settings in the client session configuration file (client-session.xml) specify the default configuration:

```
<!-- Process map settings -->
<ProcessMapBaseUrl>${DesktopProtocol}://${DesktopHost}:${DesktopPort}/pronav</ProcessMapBaseUrl>
```

```
<qad.url.process.editor>${ProcessMapBaseUrl}/ProcessEditor.jsp</qad.url.process.editor>
<qad.url.process.viewer>${ProcessMapBaseUrl}/ProcessViewer.jsp</qad.url.process.viewer>
```

Previously, the process viewer and editor were in `/tomcat/webapps/<environment>` and the process map content was in `/tomcat/webapps/<environment>/WEB-INF/pronav`.

Now process maps are included in an environment named pronav (`/tomcat/webapps/pronav`) by default. A benefit of this approach is that you can now define a single process map installation that can be shared across multiple environments.

Note The configuration setting for the process map images (QAD_IMG), set in Administration > Process Admin, now requires a fully qualified domain name. The settings now include a QAD_PMAP_ROOT setting to specify the URL to the process map installation (`http://server.domain.com:port/pronav/`) and then the QAD_IMG setting is `{QAD_PMAP_ROOT}images/`.

HTML5 Process Maps and Internet Explorer

The Process Viewer and Process Editor have been updated to support HTML5.

Computers running the QAD .NET UI 2013.1 EE client should be upgraded to use the most recent version of Internet Explorer available for the version of Windows.

For instance, if running Windows 7 or Windows Vista, you should have Internet Explorer 9, which supports HTML5.

If running Windows XP SP3, be sure to upgrade to Internet Explorer 8. (Internet Explorer 9 is not supported on Windows XP.)

Note With Internet Explorer 8, the Process Editor will not work properly when opened inside the QAD .NET UI because Internet Explorer 8 does not support HTML5.

If you want to edit process maps and are running Windows XP SP3 with Internet Explorer 8, a workaround is to install a different browser that supports HTML5 such as Chrome or Firefox, and then access the Process Editor as a stand-alone web application based on where it is installed.

You can identify the URL for the Process Editor by choosing Help | View Configuration and searching for “process” to find the URLs for both the Process Editor and Process Viewer. The Process Editor URL will typically have the format `http://server.domain.com:port/pronav/ProcessEditor.jsp`. Enter this URL in the browser that supports HTML5.

Easy On Boarding and Integrated Customization Toolkit Process Maps

Process maps now include additional maps for Easy On Boarding (EOB) and the Integrated Customization Toolkit (ICT).

Easy On Boarding, available as a QAD Services engagement, simplifies the implementation process by populating most standard data and configuring standard processes. Companies can adjust both data and processes later, but the process streamlines the implementation tasks. For more information about Easy On Boarding, please contact QAD Services.

The Easy On Boarding process maps are organized into industry verticals including Automotive, Life Sciences, Industrial, Electrical, Consumer Products, and Food and Beverage. Nodes on the maps include links to Easy On Boarding training, documentation, and other attachments that are provided during a QAD Services engagement.

You can only access the Easy On Boarding attachments if you have a QAD Services engagement for QAD Easy On Boarding.

Note The location of the Easy On Boarding attachments is specified by the Attachments setting on the Administration | Process Admin — Process Properties screen. If you do not have a QAD Services engagement and you try to access the attachments from a process map node, you will get a “file not found” error message. However, if you set Attachments to `ProcessViewer.jsp?ProcessName=eob_attachments&f=`, a process map displays instead that lets you know you can only access the attachments if you have a QAD Services engagement.

Internet Explorer and QAD .NET UI Client Installation

Warning The 64-bit version of Internet Explorer does not install the QAD .NET UI client, even if you are running Internet Explorer as an administrator. You must use the 32-bit version of Internet Explorer (typically located in `C:\Program Files (x86)\Internet Explorer\iexplore.exe`) to install the QAD .NET UI client. A situation in which this is likely to occur is when a user inadvertently creates a shortcut to the 64-bit version of Internet Explorer rather than the 32-bit version, and then uses that shortcut to launch Internet Explorer.

Reporting Framework Sample Reports

When upgrading from a version of the QAD .NET UI earlier than 2.9.4 where the Reporting Framework included six sample reports, note that the six reports have been removed in the newer versions. If you keep the previous menu system data, and the AppServer has the upgraded version without the .p programs (proxies) for the sample reports, you get an error when you launch the reports from the menu. If you no longer need these reports, you can delete them from the menu system using Menu System Maintenance. If you would like to continue to use these sample reports, you can copy the six proxy programs from your previous system to the new system and compile them. Alternatively, delete them from the menu system, and then install the six sample reports included on the Reporting Framework Source CD, following the instructions included with the CD, which is available for download from the QAD Store (see “Reporting Framework Source and Samples on QAD Store” on page 21).

Configuring Business Intelligence (BI) Portal for Dashboards

This release of the QAD .NET UI includes Dashboards, which bring together browses, web pages, business intelligence, and metrics within panels. If you have QAD Business Intelligence (BI) 3.9, you can include BI panels on dashboards. To have the QAD .NET UI communicate with BI, you need to specify the URL for accessing the BI portal in the client session configuration (`client-session.xml`) file’s `<BI.Dashboard.URL>` setting. The BI portal must be accessible to allow BI panels to be available on dashboards. (If the BI portal is not accessible, the BI panel option will not be available on Dashboards | Create Dashboard.) The setting in `<TomcatHome>/webapps/qadhome/configurations/<environment>/client-session.xml` is:

```
<BI.Dashboard.URL>http://ip_address_of_BI:port_number/qadbi</BI.Dashboard.URL>
```

In addition, to access the BI portal, the login/password for the QAD .NET UI client must match the login/password for the BI portal.

Operational Metrics for Dashboards

Dashboards can include operational metrics if they are available on your system. QAD provides the Operational Metrics functionality with an active maintenance contract, and a term license key applied to the QAD Enterprise Applications product (see https://support.qad.com/license_keys/activemaintenance). For more information, contact QAD Support.

Application Changes

Home Page Menu Item

The home page (set in Tools | Options) displays when you log in to the QAD .NET UI. You can now also access the home page from the menu. In the Applications pane, go to Home Page to open the home page.

Dashboards

Dashboards bring together browses, web pages, business intelligence, and metrics within panels. Each panel offers a quick summary; to find out more, you click on the panel. As a user, you can create, edit, and delete dashboards directly in the QAD .NET UI. To create a new dashboard, in the Applications pane, open Dashboards | Create Dashboard and add panels. You can double or triple the width of panel. You can also copy and edit an existing dashboard. As an administrator, you can share the dashboard with others and assign it to one or more roles. For more information on using dashboards, see the *Introduction to QAD Enterprise Applications User Guide*. System administrators can change the maximum number of panels allowed in a dashboard, copy dashboards between systems, modify access and display settings. For additional information on configuring dashboards, see the *QAD .NET UI Administration Guide*.

QAD Sample Dashboards

You can start creating dashboards right away, but you can also get sample dashboards that can be associated with roles in your system. The sample dashboards are available for download from the QAD Store (<http://store.qad.com>). To install the sample dashboards, use the package installation tool included with the download. After installing the dashboards, edit the role assignments for dashboards.

Browse Initial Database Query Suppression

Previously, all browses ran with an initial database query, which could cause performance issues with some browses. Now you can configure whether browses run with an initial database query. You can suppress the initial query for all browses or just specified browses. If you suppress all browses, you can then allow only specified browses to run with an initial database query. To configure the system to suppress the initial query in browses, use the following settings in the client session configuration file (client-session.xml):

```
<Browse>
<!-- Browse specific override -->
<override>
  <suppressinitialload>
    <!-- To suppress browse launch for specific browses
    enter the browseid in the suppressinitialload section.
    Use "*" to suppress all
    -->
    <!--
    <id>pp100</id>
    <id>gp340</id>
    -->
  </suppressinitialload>
  <doinitialload>
    <!-- If "*" used above, allow specific browses to load -->
    <!--
    <id>mg003</id>
    -->
  </doinitialload>
</override>
</Browse>
```

In `<suppressinitialload>`, you list the IDs of browses whose initial database query you want to suppress or use an asterisk (*) to suppress the initial database query of all browses. If you suppress all, you

can then specify exceptions in `<doinitialload>`, where you list the IDs of browses that you want to run with an initial database query.

Examples

To suppress all browses:

```
<suppressinitialload>
  <all id="*" />
</suppressinitialload>
```

To suppress Item Browse (pp100) and Sales Order Browse (so009):

```
<suppressinitialload>
  <id>pp100</id>
  <id>so009</id>
</suppressinitialload>
```

To suppress all browses except Item Browse (pp100), Sales Order Browse (so009), and Supplier View (BCreditor.View):

```
<suppressinitialload>
  <all id="*" />
</suppressinitialload>
<doinitialload>
  <do id="pp100" />
  <do id="so009" />
  <do id="BCreditor.View" />
</doinitialload>
```

Reporting Framework Changes

Inconsistent Output Issue

The Reporting Framework provides multiple destinations for report output. For example, a scheduled report has the options for Printer, Save Report Output, and Attach Report To Email. In addition, reports that are viewed on the screen can also be saved to a file or printed. Previously, in scheduled or viewed report output, if more than one of these options were chosen for a given report, then there was a possibility that inconsistent output might appear in one or more of the destinations. The problem could consist of inconsistent layout, incorrect page orientation, or incorrect numeric values being displayed. This issue has now been fixed.

Reporting Framework Source and Samples on QAD Store

The Reporting Framework Source and Samples download (Reporting Framework Source CD) is available from the QAD Store (<http://store.qad.com>). The download contains sample reports, templates, and portions of the Reporting Framework's Progress code that are relevant for Progress data source developer usage. This does not include the source code of the data source programs used by the hundreds of new reports that have been developed recently using the framework; it only includes the generic pieces that are part of the framework itself. The download also includes documentation, coding tools, and examples for using the Scheduled Report and Run Report APIs, which allow developers to write applications to schedule or run reports.

Programs in Terminal Mode Only

Some programs are only available in Terminal mode, which emulates the Character UI within the QAD .NET UI. You navigate the program in the same way as in the Character UI. The following programs are only available in Terminal mode:

- Accounts Not To Convert Maint

- AP Integrity Report
- Archive File Reload
- Call Queue Manager
- Change Deferred/Accrued Accounts
- CIM Data Load Process Monitor
- Combined Integrity Checks
- Compile Programs
- Convert Ship Qty in Ship UM
- Count Program
- Create Records for Printer Output
- Database Connect
- Database Disconnect
- Database Table Size Inquiry
- Debug CIM Document
- Dump Export/Import Doc for Edit
- End User Time Zone Change Util
- Escalation Monitor
- Exit to Operating System
- Export/Import Document Query
- Field Eligibility Maintenance
- Fixed Asset Maintenance
- Fixed Assets Integrity Report
- GL Integrity Report
- GLRW Mismatch A/C Code
- Initial Euro Exchange Rate Copy
- Inventory Integrity Report
- License Registration
- Multiple Time Zones Startup Util
- PO Integrity Report
- Process Import Documents
- Program Level
- Program/Text File Display
- Receive Import Documents
- Reload Edited Export/Import Doc
- Required Ship Schedule Update
- Send Export Documents
- Sequence Maintenance
- Server Time Zone Change Util
- Set Multiple BOL Print Utility
- Ship-From to AR

- Trading Partner Library Load
- Trading Partner Library Unload
- WIP Integrity Report

QAD Business Intelligence 3.9

QAD Business Intelligence Version: 3.9

Date: September 2013

New Feature Summary

The QAD BI 3.9 release introduces the following new features:

- **Auto Installer.** BI 3.9 includes a new GUI-based installer that can be used to install the Data Warehouse Designer, create the Data Warehouse Database, and install the BI Portal. Additional GUI installers can then be used to install metadata modules into the Data Warehouse Database. This enhancement streamlines the installation process, thus reducing the need for manual configuration. For more information, see the *QAD BI 3.9 Installation Guide*.

Note The Auto Installation can only be used for new installations and not for upgrades.

- **Dashboards.** BI Portal objects, including charts and grids, can be included in the new QAD .NET UI Dashboards. BI Reports are not currently operational within the new Dashboard framework. The BI Portal webapp reference must be specified in the `client-session.xml` file. See QAD Dashboard documentation for more information.
- **Order Management Dashboard.** In BI 3.9, the OM Module has been redesigned to include three new OM Dashboards dedicated to Bookings, Shipments and Sales, which are the major steps in the sales order process flow. Previously, the OM Dashboards only contained a limited number of visual items and displayed information at the company level, which includes all domains, for the current financial month or year. In BI 3.9, the BI dashboards contain more visual items that display information at both the company level and for a specific domain. Previously, the OM Dashboards did not have input parameters. The user could not view information for a different month and year or drill down into a specific domain. In BI 3.9, the new OM Dashboards provide a Year and Domain parameter bar so that users can view information for the domain and financial year of their choice. In addition to these improvements in BI 3.9, the BI Order Management module now correctly supports customer scheduled orders by displaying scheduled and non-scheduled orders in all OM dashboards.

Upgrade Instructions

See the *QAD BI 3.9 Installation Guide* for the instructions to upgrade to QAD BI 3.9.

Data Warehouse Tables Changed

The following section lists the Data Warehouse tables that have been changed, added, or deleted.

Note The tables on the Modified list may have been changed structurally. For example:

- Columns added or deleted
- Indexes added or deleted
- Changes made to business display names
- Changes to visibility of particular columns in the BI Portal
- Any combination of these modifications
- The procedure that populates the table has changed

List of Tables Modified

Common Module Modified Tables

- dim_credit_term
- dim_ee_saf
- dim_item
- load_ad_mstr
- load_ar_mstr
- load_cm_mstr
- load_com_mstr
- load_comd_det
- load_ee_DInvoice
- load_ee_Saf
- load_ee_SafConcept
- load_exr_rate
- load_icc_ctrl
- load_pt_mstr
- load_tr_hist
- load_tr_hist_history
- load_vd_mstr
- perm_transaction_hist
- stage_ee_saf
- stage_gl_calendar_year
- stage_transaction_hist

Financials Module Modified Tables

- extract_ee_customer_invoice
- extract_ee_customer_invoice_stage
- extract_ee_posting_line
- extract_ee_posting_saf
- extract_ee_supplier_invoice
- extract_ee_supplier_invoice_stage
- extract_gl_trans_hist
- fact_gl_transaction
- load_ap_mstr
- load_ard_det
- load_ck_mstr
- load_ckd_det
- load_ee_ad_mstr
- load_ee_CInvoice
- load_ee_CInvoiceMovement
- load_ee_Posting
- load_ee_Posting_all
- load_ee_PostingLine_all
- load_ee_PostingSaf
- load_gl_transaction_type
- load_vo_mstr
- perm_ee_customer_invoice
- perm_ee_customer_invoice_stage
- perm_ee_posting_line
- perm_ee_supplier_invoice
- perm_ee_supplier_invoice_stage
- stage_ap_invoice_snaps
- stage_ap_voucher_chk_match
- stage_ar_invoice_snap
- stage_ee_ap_supplier_invoice
- stage_ee_ap_supplier_invoice_hist
- stage_ee_ap_supplier_invoice_hist1
- stage_ee_ap_supplier_invoice_history2
- stage_ee_ap_supplier_invoice_history3
- stage_ee_ap_supplier_invoice_history4
- stage_ee_ap_supplier_invoice_movement_hist
- stage_ee_ap_supplier_invoice1
- stage_ee_ap_supplier_invoice2
- stage_ee_ar_customer_invoice_hist
- stage_ee_ar_customer_invoice_hist1
- stage_ee_ar_customer_invoice_history
- stage_ee_ar_customer_invoice_history0
- stage_ee_ar_customer_invoice_history1
- stage_ee_ar_customer_invoice_history2
- stage_ee_ar_customer_invoice_history3
- stage_ee_ar_customer_invoice_movement_hist
- stage_ee_ar_customer_invoice_stage_hist
- stage_ee_ar_customer_invoice1
- stage_ee_customer_invoice_perm
- stage_ee_customer_invoice_stage_perm
- stage_ee_gl_transaction1
- stage_ee_posting_line_perm
- stage_ee_posting_saf
- stage_ee_supplier_invoice_perm
- stage_ee_supplier_invoice_stage_perm
- stage_gl_balance1
- stage_gl_transaction1
- stage_gl_transaction2
- stage_gl_transaction3
- stage_se_ap_inv_snap
- stage_se_ap_snap1
- stage_se_ap_snap2
- stage_se_ar_inv_snap
- stage_se_ar_snap1

- stage_ee_ap_supplier_invoice_history0
- stage_ee_ap_supplier_invoice_history1
- stage_se_ar_snap2
- stage_se_ar_snap3

Operations Module Modified Tables

- fact_po_order
- fact_inv_transaction
- fact_po_order_history
- fact_po_order_performance
- load_pod_det
- load_shft_det
- load_wod_det
- load_wod_det_hist
- stage_inv_mth_balance
- stage_inv_transaction1
- stage_inv_trx_chg_mth1
- stage_po_credit_term
- stage_po_credit_term1
- stage_po_ord_perf
- stage_po_order_hist
- stage_po_order_hist_initial
- stage_po_order_hist_initial1
- stage_po_order_hist_initial3
- stage_po_order_hist_initial6
- stage_po_order_hist_initial7
- stage_po_order_hist1
- stage_po_order_hist2
- stage_po_order_hist3
- stage_po_order_hist4
- stage_po_order_hist5

Order Management Module Modified Tables

- extract_om_invoice_line
- extract_om_transaction_hist
- fact_om_booking
- fact_om_invoice
- fact_om_order
- fact_om_order_history
- fact_om_order_performance
- fact_om_shipment
- load_cncu_mstr
- load_idh_hist
- load_idh_hist
- load_ih_hist
- load_sod_det
- perm_om_invoice_line
- stage_om_booking
- stage_om_booking_previous
- stage_om_booking_transaction
- stage_om_booking_transaction1
- stage_om_booking_transaction2
- stage_om_booking1
- stage_om_booking2
- stage_om_booking3
- stage_om_booking4
- stage_om_invoice
- stage_om_invoice_line
- stage_om_invoice_order_line
- stage_om_invoice_transaction
- stage_om_invoice1
- stage_om_invoice2
- stage_om_invoice3
- stage_om_ord_perf
- stage_om_ord_perf_full
- stage_om_ord_perf1
- stage_om_order
- stage_om_order_header
- stage_om_order_header_all
- stage_om_order_inv_header
- stage_om_order_inv_line
- stage_om_order_inv_line1
- stage_om_order_inv_line2
- stage_om_order_line
- stage_om_order_line_all
- stage_om_order_snap1
- stage_om_order_snap2
- stage_om_order_snap3
- stage_om_order_transaction
- stage_om_order_transaction4
- stage_om_order1
- stage_om_order2
- stage_om_order3
- stage_om_shipment
- stage_om_shipment_transaction
- stage_om_shipment1
- stage_om_shipment2
- stage_om_shipment3

EAM Module Modified Tables

- fact_eam_inv_transaction
- load_eam_account
- load_eam_domain
- load_eam_part_type
- load_eam_squawks
- perm_eam_inv_transaction
- stage_eam_inv_trans_perm
- stage_eam_inv_transaction

Tables Added to Existing Modules

For the BI 3.9 release, there were no tables added to the Common and Financial Modules.

Order Management Module Added Tables

- load_abs_mstr
- load_absr_det
- load_idh_hist_cust_ref
- load_idh_hist_pr_list
- load_idh_hist_rlse_id
- load_pc_mstr
- load_sch_mstr
- load_schd_det
- load_tr_hist_ref
- load_tr_hist_ship_id
- perm_customer_consignment
- stage_om_booking_transaction_all
- stage_om_invoice_scheduled_transaction
- stage_om_ord_perf_all
- stage_om_order_transaction7
- stage_om_price_list
- stage_om_schedule_detail
- stage_om_schedule_detail1
- stage_om_schedule_detail2
- stage_om_scheduled_order_perf
- stage_om_scheduled_order_perf1
- stage_om_scheduled_order_transaction
- stage_om_scheduled_order_transaction1
- stage_om_shipment_requirement
- stage_om_shipment_requirement1
- stage_om_shipment_requirement2

Operations Module Added Tables

- dim_liability_date
- stage_po_order_hist_daily
- stage_po_order_hist_daily1
- stage_po_order_hist_daily2
- stage_po_order_hist_daily3
- stage_po_order_hist_daily4
- stage_po_order_hist_daily5
- stage_po_order_hist_daily6
- stage_po_order_hist_daily7

List of Tables Deleted

For the BI 3.9 release, there were no tables deleted.

Enhancements

Table 11 BI 3.9 Enhancements

Component	QAD Issue	Description
Metadata (Multi-Module)	QBI-3437	<p>The dimension formerly called the Item dimension was renamed to the Site-Item dimension in BI 3.8.1. This was done to avoid confusion over the dimension. It was not clear from the name that the business key of the dimension was actually on the combination of the Item and the Site.</p> <p>However, the new name of Site-Item also caused some confusion in the Portal because users were looking for the Item dimension to be in a certain place alphabetically. Because Site-Item appeared much further down in the alphabetical list of dimensions, Portal display name for this dimension has been changed to Item-Site.</p>
Portal Standard Objects (OM)	QBI-3593	<p>The BI Portal Standard Objects for the Order Management module have been replaced. The new objects are installed for any new BI Portal installation.</p> <p>For current Order Management BI Portal customers, an upgrade script is provided that renames the current Order Management standard Portal objects as "deprecated". This script should be run prior to importing the new QAD Standard portal objects for Order Management.</p>

Fixes

Table 12 BI 3.9 Fixes

Component	Qad Issue	Description
Metadata (Order Management)	QBI-2949	<p>The source for 2 columns in fact_om_shipment file has been modified. The unit_cost_trans and unit_cost_base columns are now sourced from the sales order line.</p> <p>Specifically, the new source is sod_det.sod_std_cost (or idh_hist.idh_std_cost) column. The base cost is based on the trans cost, converted to the base currency, as needed.</p> <p>Previously, they were sourced from the individual cost components of the shipment transaction.</p> <p>Additional logic was also added so that in the event that the transaction records exist and the invoices do not, which results in the base currency cost having a value and the trans value currency having a cost of 0, the transaction uses the base currency to calculate a trans currency cost.</p>
	QBI-3084	<p>The fact_om_order snapshot table listed the current month's date as the prior day always. While it makes sense to display yesterday's date if the daily run ran between midnight and 8am, it does not make sense for a daily run that is run at any other time to display the prior date for the current day. It should display the current day. This has been corrected now so that any run between just after 8am and midnight presents the current month's end of day as the current day. The runs between midnight and 8am display data from the prior day.</p>
	QBI-3173	<p>In order to ensure that stage_om_order_line_all is functioning properly for fact_om_order_history (picks last version of order per day) and fact_om_shipment and fact_om_booking, the logic leading up to this table was revamped to ensure that all invoice lines for a given order/line/item combination get through to stage_om_order_line_all. That way, the history table can link up on the last record of the day, but a shipment or booking record can link to any record from that day. Changes were also made to better handle consigned orders, including ensuring the CN-SHIP records are getting through to fact_om_shipment, but not their correlating ISS-SO records. This was achieved in part by adding a perm_customer_consignment table that is fed from cncu_mstr.</p>
	QBI-3199	<p>The creation of faked transaction records in stage_om_order_transaction4 was producing too many records because it was recreating records that had been filtered out in stage_om_order_transaction3. A ranking system was put in place on 4 and a new table, 7 was created to only pick the last invoice of each day for faked transaction records to ensure that only useful records are being created to be fed to stage_om_order1. Otherwise, multiple records are created for a day that immediately get filtered out. For serialized items where there are many invoices per day, this removes enormous overhead from the logic.</p>
	QBI-3308	<p>In prior releases, when a Sales Order (sod_det) record was deleted and no invoices had been created against it, the record would be end_dated on the day that it was found. Because the logic that set that end date did not have filtering on it, it did not look for the already DELETED order_status records, causing the next daily run, the dss_history_end_date, to get set again to the new day. The result was that every day would be the new end date for the DELETED record.</p> <p>Filters have now been put in place in the logic for fact_om_order_history so that once a record has a status of DELETED with an end date, the record does not keep resetting the end date every run. The only deleted records getting a current end_date are new ones.</p>
	QBI-3325	<p>When you use the new perm_customer_consignment table, which is sourced from cncu_mstr, links are made as the data is pulled into extract_om_order_line and extract_om_transaction_hist so that a consignment_flag column can be populated for quick and easy reference of consigned orders. This logic is contingent on the ERP properly populating the consignment information in the cncu_mstr table. This sets the stage for more work down the road if anybody needs to determine if an extracted invoice (idh_hist) or transaction (tr_hist) record is of type consignment.</p>
	QBI-3331	<p>dim_snapshot_period_type_key is now included in fact_om_order so that when an end of week lands on an end of month, both values appear in the table.</p>

Table 12 BI 3.9 Fixes

Component	Qad Issue	Description
	QBI-3368	ISS-SO transactions for consigned orders should not be getting through to the fact_om_shipment table. Instead the CN-SHIP records are the ones that should be sent through. Filters were added to ensure that records are properly flagged consigned and then the ISS-SO transactions are filtered out from getting to fact_om_shipment.
Metadata (Purchasing)	QBI-2959	The historical load of PO History Fact table has been modified to correctly transform the ship to code from the PO Header.
	QBI-3021	In prior releases, if the end of week and end of month happened to fall on the same day, the snapshot table fact_po_order would only display either the end of week or end of month value for the business key. To fix this problem, there should be one row of data for each. Adding the rows was achieved by changing the business key to include the dim_period_snapshot_ty_key and changing the fact_po_order update logic to also look at the dim_period info when doing updates. The table now provides a row for each snapshot type when the date falls on the same day.
	QBI-3035	The logic for Due Date was correct. A new Liability Date column was added, as well as a correlating dimension. Existing logic for PO Payment Due Date was corrected by creating a function that mimics the logic in the ERP with regard to setting the date based on various credit terms information and liability date. For detailed technical look at the logic, see the procedure GetPOPaymentDueDate.
	QBI-3043	Daily Purchase Order Processing has been modified. In previous versions, multiple runs for the DAILY BI updated jobs could cause duplicate key errors during PO processing. Also, if the DAILY BI process was not run on a given day, all PO activity for that day was combined with activity for subsequent days. This logic has been modified. Multiple DAILY runs no longer result in duplicate key errors. Also, if the DAILY run is skipped for any reason, the purchasing activity is correctly recorded on the day it took place.
	QBI-3100	In fact_po_order_history, the order_amount columns should display the PRE-discount cost, while all other amount columns reflect the cost after discounts have been applied. This now works properly. For records with no discount, the ordered_amount and extended_amount columns are essentially the same. The difference between the two is only shown when discounts have been applied.
	QBI-3104	PO Order History table (fact_po_order_history) now handles deleted purchase orders as follows: <ul style="list-style-type: none"> • The current row of the table (dss_current_flag = Y) is "expired". That is, the dss_history_end_date is set to the current processing date. • The quantity open is set to 0. • The PO Line Status is set to "Unknown".
	QBI-3108	PO Order History table (fact_po_order_history) now handles deleted purchase orders as follows: <ul style="list-style-type: none"> • The current row of the table (dss_current_flag = Y) is "expired". That is, the dss_history_end_date is set to the current processing date. • The quantity open is set to 0. • The PO Line Status is set to "Unknown".

Table 12 BI 3.9 Fixes

Component	Qad Issue	Description
Metadata (Financials EE)	QBI-3052	<p>QBI-2817 Release Notes</p> <p>Financials EE History and Snapshot fact tables had some HIST load calculation errors prior to BI 3.9. Invoices with payments spread over multiple dates could have double counted payments or missing payments on some history and snapshot records. BI 3.9 fixes these calculations. Customers upgrading to BI 3.9 should run the FIN EE upgrade script, which truncates all AP and AR fact tables and does a fresh historical reload from source data. Due to QBI-3180 (Rewrite of perm tables resolving _ID/_code dimension fields) and QBI-3123 (Calculation problems fixed in AP/AR history and snapshot tables) there is no upgrade path to BI 3.8.2/3.9 for FIN EE other than erasing all BI data and reloading from Progress.</p> <p>Tables impacted:</p> <ul style="list-style-type: none"> • fact_ee_ap_supplier_invoice_history • fact_ee_ap_supplier_invoice_snapshot • fact_ee_ar_customer_invoice_history • fact_ee_ar_customer_invoice_snapshot
	QBI-3162	<p>Financials EE History and Snapshot fact tables had some HIST load calculation errors prior to BI 3.8.2/3.9. Invoices with payments spread over multiple dates could have double counted payments or missing payments on some history and snapshot records. BI 3.8.2/3.9 fixes these calculations. Customers upgrading to BI 3.9 should run the FIN EE upgrade script, which truncates all AP and AR fact tables and perm tables and does a fresh historical reload from source data. Due to QBI-3180 (Rewrite of perm tables resolving _ID/_code dimension fields) and QBI-3123 (Calculation problems fixed in AP/AR history and snapshot tables) there is no upgrade path to BI 3.8.2/3.9 for FIN EE other than erasing all BI data and reloading from Progress.</p> <p>Tables impacted:</p> <ul style="list-style-type: none"> • fact_ee_ap_supplier_invoice_history • fact_ee_ap_supplier_invoice_snapshot • fact_ee_ar_customer_invoice_history • fact_ee_ar_customer_invoice_snapshot
	QBI-3467	The Currency Conversion procedure now allows for 10 significant digits. Previously it was using the SQL Server standard for division of non-floating decimals and giving 6 significant digits. This obviously changes the measure slightly if they go through currency conversion.
Metadata (Financials SE)	QBI-3394	In fact_gl_transaction (FIN SE GL), the General Ledger transactions associated with Accounts Receivable have a valid customer dimension. Most GL transactions do not have a customer. Prior to this version, these blank customers were assigned to a 'NOT APPLICABLE' dimension row created for each source/domain combination. These are now being assigned to the zero key dimension of unknown, which should improve performance.
	QBI-3432	In very rare instances (only 1 occurrence in 4 years), the loading of stage_ap_voucher_chk_match gets stuck in an infinite loop as it toggles back and forth between records as it keeps correcting to 0 but by so it sets a matching record not to zero. This fix resolves that very rare issue.
Design Evaluation (Financials SE)	QBI-3459	Snapshot tables should contain the dim_snapshot_period_type_key so it can be determined if the records are for a Monthly or Weekly snapshot. In certain instances, both fall on the same day. The changes for this ticket ensure that the dim_snapshot_period_type_key is included in the AR and AP snapshot tables and that the calculations for the date values follow established snapshot logic. This ensures that when month_end and week_end are on the same day, both values are properly displayed.

Table 12 BI 3.9 Fixes

Component	Qad Issue	Description
Metadata (Multi-Module)	QBI-3077	<p>dim_credit_terms is a slowly changing dimension and for columns driving a slow change, the prior version of the record should be end dated and a new version of the record should be created with a current start date and flagged as current.</p> <p>There are a handful of exceptions for columns that should not cause a slow change or change any column at all.</p> <p>The following are the rules for column changes, which is now working in the 3.9 release:</p> <ul style="list-style-type: none"> • Changes to credit_term_description, credit_term_modified_date, staged_credit_term_code should only warrant an update to the existing records. • Changes to dss_extract_timestamp, dss_process_batch_id, credit_term_percent_due (the first two change every run) should not ever change data in dim_credit_term. • Changes to any other columns should warrant slowly changing dimension type changes to the record, end dating the last one and start dating the new one and flagging it as current.
	QBI-3436	<p>Sometimes, the project_code field was not populated properly in the dim_project dimension due to the order of tasks in the DAILY_COMMON_PROCESS_CHAINED job causing the stage_ee_project task to possibly run before the preceding stages that it required. This is now fixed so that stage_ee_project does not run until after its preliminary stages are complete.</p>
	QBI-3438	<p>The GL Transaction Types XC (GL Consolidation) and PC (Periodic Costing) have been added to the dim_gl_transaction_type dimension. Any GL records with these transaction types are now linked to the matching record in dim_gl_transaction_type instead of the Unknown value.</p>
	QBI-3522	<p>In the case where one domain might have a different number of financial periods in a year than other domains, the dim_date_qad corporate date fields might be incorrect for some domains.</p> <p>The stage_gl_calendar_year stage was correct to include the domain in the where clause, thus correctly capturing the end-of-period date properly for each domain.</p>
Metadata (Inventory)	QBI-3534	<p>As an example, a customer doesn't have their 201308 (August) fiscal period open. 201307 fiscal period ends on July 31st. On July 31st, customer enters transactions with an effective_date of August 1st. Those transactions then get picked up and an attempt is made to match them to a fiscal_period. When no match is found, the fiscal period is set to 0, which gets into the fact_inv_mth_balance table and then later causes subsequent staging tasks to fail.</p> <p>Even if the next daily run has the requisite fiscal_period, it does not correct the previously created 0 fiscal_period, which would need to be deleted manually.</p> <p>Any fiscal periods set to 0 should be filtered out prior to getting to fact_inv_mth_balance. This is filtered out at stage_inv_mth_balances.</p> <p>Extract from fact_inv_transaction in stage_inv_trx_chg_mths1 should not only look for dss_history_date > downloadtime-process_days, but also look for effective_date > downloadtime-process days as well. The result is that if they future-date an effective date, it is still picked up at the appropriate time.</p> <p>Index placed on fact_inv_transaction of effective_date and item to ensure quicker retrieval for the stage_inv_trx_chg_mths1 data grabs.</p>
Portal	QBI-3067	<p>In previous versions, the BI Portal did not correctly handle new (custom) columns defined with key type 2, but referencing a non-dimensional table. This is an invalid combination. When a BI Portal designer attempted to build a query against the affected table (using any columns), an empty error message was displayed.</p> <p>The application now correctly processes the query, and an error message is written to the BI Portal log file.</p>

Table 12 BI 3.9 Fixes

Component	Qad Issue	Description
	QBI-3256	Prior to the BI 3.9 release, there were issues related to parameter passing between Dashboard elements and reports. Specifically, when a parameter bar on a Dashboard was used to pass selection values to a visual item (Grid, Chart, etc) and then those parameters were passed to a report, the resulting report parameter bar did not reflect the selected values. In addition, if the user modified the parameter selection and the report parameter area and then re-ran the report, the updated parameter values were not used. Both of these issues have been fixed in the current release.
	QBI-3278	The functionality for drill-in reports has been enhanced for this release. When a user drills in to a report from another report, the drill-in report now has a fully functional parameter bar. This provides the user the opportunity to change parameter values and re-run the report. This enhancement also allows the user to export the drill-in report to either an Excel or .pdf.

QAD Business Process Management 1.3

Version: 1.3

Date: September 2013

Environment: QAD Enterprise Applications (EA) Standard Edition and Enterprise Edition, 2011 and later

QAD .NET UI Versions: 2.9.3 and later

Languages: English, Castilian Spanish, Latin Spanish, Dutch, French, German, Italian, Japanese, Korean, Czech, Polish, Brazilian Portuguese, Simplified Chinese, Traditional Chinese

Related Documentation: *User Guide: QAD BPM, Administration Guide: QAD BPM, Installation Guide: QAD BPM*

New and Changed Features

Viewing Dataslots

Now you can view the dataslot information for the process instance by clicking the Dataslots button in the application toolbar. The dataslot information can be helpful, for example, in process debugging.

Role-Based Process Ownership and Visibility

A new “process ownership” concept has been introduced to increase the level of visibility for the managers of specific business processes or a specific business area. A process can be owned by one or more roles. In My Processes (History) Browse, a user of the roles can view all instances of the process that the user is responsible for. Administrators can define which role is responsible for which business process.

Changes to My Processes (History) Browsers

The My Processes (History) Browsers now display process instances according to role-based ownership instead of creator. A new Creator field has been added to the browsers.

Maintaining Process Ownership

Administrators can use Process Ownership Maintenance to define which user role is responsible for which business process. The relationship between Application and Role field is not restricted as one-to-one.

Viewing Completed Work Step in Processes Browse

In the Tile screen view of Processes Browse, you can see active work steps of the process in a child browse. Now in the child browse, a new tab is available aside the Active Work Steps tab to show all completed work steps.

Visibility to Suspended Process Instances

Suspended process instances can now also be seen in My Processes Browse and All Processes Browse.

Launching Processes from Custom Forms

Now the system allows users to launch a process from a custom screen in QAD .NET UI. To achieve this, the application developer defines the custom form and process in BPM Studio and the administrator adds a menu entry to .NET UI configuration file. After these actions, authorized users can see the launch process menu in .NET UI and use it to launch the process.

Packaging and Deploying Business Processes

Now administrators can use a tool `bpm_package.sh` to package deployed processes, BizRules, and any other BPM artifacts in one BPM environment and deploy or install it to another BPM environment. The artifacts can include business objects, business object meta data, adapters, adapter meta data, dataslot meta data, messages, and any other common resource files.

Fixes

Fix Description	Internal ID	Issue Affected Versions
Now in My Task Browse, when you select a business process and click the Details button, the system passes DocumentID to the corresponding function correctly.	BPM-737	1.2
Previously for the approval subprocess, the system failed to display comments of the first approval cycle. Now the system displays comments for all approval cycles correctly.	BPM-751	1.2
Previously for some Item sample processes, some swim lanes had no performer name. Now the issue is fixed.	BPM-753	1.0+
Previously when a new version of a process was deployed, BPM browses did not work. Now the issue is fixed.	BPM-754	1.2
Previously when the parent process was removed, the completed tasks were still displayed in the History Browse. Now when the parent process is removed, the completed tasks are no longer displayed.	BPM-761	1.0+
Previously when a user logged out from .NET UI and logged in again without closing the client, the BPM menus would disappear. Now the issue is fixed.	BPM-767	1.2
Now when multiple versions of the same process exist, all process instances use labels and instructions from the corresponding process template versions correctly.	BPM-774	1.2
Now the Refresh button in BPM browses works normally in .NET UI version 3.0.	BPM-793	1.2
Previously when multiple versions of the same process existed, My Tasks Browse and All Tasks Browse did not function correctly. Now the issue is fixed.	BPM-794	1.2
Previously in the Processes Browse, when a subprocess instance was completed in the flow view and the user clicked Refresh, the flowchart would close. Now the Refresh button works as expected.	BPM-795	1.0+
Now the adapter that returns application data from API works fine, as <code>suppressResponseDetails</code> in <code>QDoc11MethodAdapter</code> now can be set to <code>False</code> .	BPM-817	1.2
Now the Add to Favorites button in BPM browses works normally in .NET UI version 3.0.	BPM-822	1.2
Previously in My Tasks Browse and All Tasks Browse, when record per page was set to All, the search function reported errors. Now the issue is fixed.	BPM-838	1.0+

Fix Description	Internal ID	Issue Affected Versions
Previously when a completed process instance was removed and a user clicked Actions in the Processes Browse, the system reported errors. Now the issue is fixed.	BPM-847	1.1+
Now in Query Adapter, Max Rows can be set to zero to allow the query to return all records that meet query conditions.	BPM-854	1.0+
Now even without Internet access, the installer can successfully install BPM.	BPM-859	1.0+
Report action in BPM browses now works as expected.	BPM-868	1.0+

QAD Configurator 5.4.1

QAD Configurator Version: 5.4.1

Release Date: September 2013

QAD Product Suite Compatibility: eB2.1 SP4, QAD 2007, QAD 2007.1, QAD 2008 Standard and later, QAD 2008.1 Enterprise and later

Documentation Updates

The following documents have been updated for this release:

User Guide: QAD Configurator (new item number 70-3189-5.4.1); *Installation Guide: QAD Configurator* (new item number 78-0914-5.4.1)

New and Changed Features

- Feature-Based Pricing
- Performance Enhancements for Configuration Analyzer
- Performance Enhancements for Configuration Questionnaire

Feature-Based Pricing

When the feature data type is text and you have selected Allow Fill-in, now you can use Feature-Based Pricing to calculate pricing for a feature rather than for a feature option.

For Feature-Based Pricing, you can use either the Pricing Part field or the Feature Value as Pricing Part check box:

- To use the Pricing Part field, enter an existing item number from QAD EA.
- To use the Feature Value as Pricing Part check box, you select it and then the system dynamically uses the feature answer on the questionnaire as the pricing part.

Performance Enhancements for Configuration Analyzer

There are some performance improvements to the Analyzer.

Performance Enhancements for Configuration Questionnaire

There are some performance improvements to the Questionnaire.

Fixes

Issue Number	Fixes
CFG-1656	Now the system is free of obsolete files so compilation errors are avoided.
CFG-1658	When you reload a configuration in the Questionnaire, the system no longer copies the previous configuration description. In this way, the system prevents an inaccurate configuration description for the new configuration.
CFG-1659	Now the questionnaire supports non-ASCII characters for the configurable item name.
CFG-1662	A problem with more than one option for a feature being default is fixed.
CFG-1677	Previously there were rules execution problems; for example, some rules were executed before all the dependencies were set by their respective rules. Now the rules execution problems are fixed.

Issue Number	Fixes
CFGS-59	A problem with No Duplicates in Configurable Item Maintenance is fixed.
CFGS-61	A problem with decimal numbers in pricing is fixed.
CFGS-62	A problem with decimal numbers in feature fields is fixed.
CFGS-64	A problem with comma in feature fields is fixed.
CFGS-67	A problem with saving assignment or selection rules in Variant Product Structure Rule Maintenance is fixed.
CFGS-70	A problem with Batch Compiler for newly imported product structure rules is fixed.
CFGS-72	A system error (14675) during analyzing is fixed.
CFGS-73	Previously the Commodity Code information for the configurable item was not copied into the variant items during variant item creation. Now the problem is fixed.

QAD Customer Management Reports 1.5

Customer Management Reports and Browsers Bundle Version: 1.5

Release Date: September 2013

QAD Enterprise Applications Compatibility: QAD Enterprise Edition 2011 and later

Related Documentation: The *Reports and Browsers Bundles Installation Guide* is provided on the product delivery media. It is also available on the Documentation area of support.qad.com under the Installation-Conversion topic for your Enterprise Edition version.

This bundle includes usability improvements on existing reports and browsers; it also includes some new browsers and new centers.

Note Download this bundle from QAD Store and install it independently. But if you are installing Customer Management Dashboard 1.0, the system automatically gets this reports and browsers bundle for you, which means you do not have to install this bundle separately.

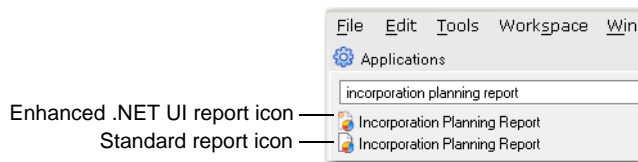
The legacy versions of all reports, browsers, and inquiries are still available, except the following inquiries:

- Call Detail Inquiry; now it is Call Print (11.1.1.3)
- Area Structure Inquiry; now it is Area Structure Report (11.1.3.3)
- Area Holiday Inquiry; now it is Area Holiday Report (11.11.7)
- Material Order ATP Inquiry; now it is Material Order ATP Report (11.15.6)
- Pending Call Inquiry; now it is Pending Call Browse (11.15.10)

You can access the new reports and browsers in several ways:

- By entering the report title in the menu search field. The search result lists two occurrences. The icon differentiates between the standard and enhanced .NET UI versions. Figure 1 shows an example.

Fig. 1 Report Icons in .NET UI



- By entering the new menu number in the menu search field. QAD .NET UI-only reports are assigned to menu numbers 75 or greater, so they are hidden on the character UI menus.

Note You cannot access a new report by entering a Progress program name.

- By navigating in the menu tree to the functionality area.

Note This bundle is cumulative; it includes reports and browsers that were previously introduced. For lists of those reports and browsers, see previous release notes.

Table 13 New Customer Management Browsers

Menu	Browse Title
11.1.1.27	Open Call Line Browse
11.1.1.28	Dispatch Call Browse
75.7.2.24	Customer Ship Schedule Variance Browse
75.7.2.26	Salesperson Quota Achievement Browse

Menu	Browse Title
75.7.2.28	Sales Quote Gross Margin Browse
75.7.2.29	Sales Order Gross Margin Browse

Table 14 New Centers

- Tech Support Center, including:
- Service Call Activity
 - Installed Base and Service Items
 - Engineer Availability
 - In-House Repair Activity
- Service Dispatch Center, including:
- Dispatch Calls
 - Engineer Availability
 - Installed Base and Service Items

QAD Customer Self Service 5.2.3

QAD CSS Version: 5.2.3

Release Date: September 2013

QAD Product Suite Compatibility: eB2.1 SP2 through SP4, QAD 2007, QAD 2007.1, QAD 2008 Standard Edition and later, QAD 2008 Enterprise Edition and later

Documentation Updates

The following documentation has been updated for this release:

Administration Guide: QAD CSS (new item number 70-3188-5.2.3); *Implementation Guide: QAD CSS* (new item number 70-3187-5.2.3); *Installation Guide: QAD CSS* (new item number 78-0887-5.2.3)

Changed Features

Detail Data Translation Maintenance in Menu Maintenance

In Menu Maintenance, when you use Detail Data Translation Maintenance to do data translation, now you set up string names first and then use String Translation Maintenance to add translation entries.

To translate the fields in Menu Maintenance:

- 1 In Detail Data Translation Maintenance, set string names for different language codes.
- 2 Use String Translation Maintenance to add translation entries for the strings that you defined in the previous step.
 - c Go to Home Menu|Administration Menu|Language Menu|String Translation Maintenance.
 - d Add translation entries for the strings.

Fixes

Issue Number	Fixes
CSS-510	A problem with the DataSource button in User Maintenance is fixed.
CSS-511	Now CSS can handle a server port that is different from the default.
CSS-512	A problem with deleting and then adding a menu in Menu Maintenance is fixed.
CSSS-35	Now there is a message to display when the required JavaScript file for menus is not found.
CSSS-37	Now even when a Credit Card Transaction fails, the Credit Card Transaction Report works normally.
CSSS-38	Now a credit card invoice can be posted for partial shipment.
CSSS-40	A problem with Account Info menu display when a user is associated with all customers is fixed.
CSSS-41	A problem with customer search in B2C is fixed.
CSSS-42	A problem of incorrect currency being used in order reports is fixed.
CSSS-43	A problem with menu text display is fixed.

QAD Enterprise Asset Management 12.6

Enterprise Asset Management Version: 12.6

Date: October 2013

QAD Enterprise Applications Versions: Enterprise Edition 2009, 2009.1, 2010, 2010.1, 2011, 2011.1, 2012, 2012.1, 2013, and 2013.1; Standard Edition 2008, 2009, 2010, 2011, 2012, and 2013.

Languages Supported: English, Latin American Spanish, Castilian Spanish, Czech, Polish, French, German, Brazilian Portuguese, Simplified Chinese, Korean, Bulgarian, Hungarian.

Upgrade Instructions

To upgrade to EAM 12.6, see the upgrade instructions supplied with the release media.

For all other installation information, see *Installation Guide: QAD Enterprise Asset Management*.

New Feature Summary - EAM 12.6

This section describes the new features that are available in EAM 12.6.

Note EAM 12.6 includes all the patches and maintenance releases since 12.5.1. For information regarding the fixes and enhancements introduced from 12.5.1 - 12.5.2.2, see “New Feature Summary - EAM 12.5.1.2 - 12.5.2.2” on page 43.

Margin Approval for Customer-Funded Projects

Previously, EAM only allowed projects to be approved based on budgeted costs. With EAM 12.6, you can approve customer-funded projects based on margin percentage from customer funding as opposed to budgeted costs. With this new feature, margin approval groups are routed based on planned margin percentage for approval. The lower the planned margin percentage, the higher in the organization the project needs to be approved.

PM Routes

Previously in EAM, you had to create a PM work order for each piece of equipment. With EAM 12.6, you now can add multiple pieces of equipment to a single PM work order or planned CM work order using a route type instructions list. On the route instruction list, you can add a different piece of equipment with its driving unit of measure (DUOM) to each step. This feature makes it possible to inspect and record the DUOM readings for multiple pieces of equipment on a single work order. Providing PM routes enables maintenance planners to more efficiently schedule a PM work order or a planned CM work order where the same task, such as inspecting and taking readings, can be performed on multiple pieces of equipment.

Equipment Monitor DUOM

In EAM 12.6, the monitor DUOM type has been added to the equipment’s Readings submenu. User-defined tolerances for monitor compare actual highs and/or actual lows occurrences to maximum highs and/or maximum lows to determine out-of-tolerance readings entered above upper limits or below lower limits for the equipment. You can select options so that the system automatically sends out alert e-mails and/or creates CM work orders to address OOT readings. EAM 12.6 provides a browse that shows every monitor reading that has been entered for a piece of equipment. This browse includes the alarms and CM work orders that were created because of the OOT readings. Corrections to readings are done directly in

reading history for monitor DUOM. Corrections to these readings evaluate out-of-tolerance conditions or if an out of tolerance condition no longer exists.

PM Equipment Calibration

Enhancements have been made to address PM equipment calibration. These enhancement ensure that your equipment runs within the design specifications to reduce the amount of production scrap, rework, and downtime. In EAM, you can now use route instruction lists for PM work orders and planned CM work orders, which allow you to enter equipment readings that verify if the equipment is running within the defined engineering tolerances. If there are any OOT readings for any equipment, the system can automatically send out e-mail alerts and create a CM work orders to address the OOT condition. Corrections to readings recorded in work orders must be done directly in the equipment's Readings submenu.

Vendor Currency

An option has been added in EAM to restrict vendor currencies used in purchasing to those defined in QAD EE supplier banking definitions. The Use Only Vendor Currencies option is set at domain level in EAM. The default setting is cleared.

When the Use Only Vendor Currencies check box is cleared, you can use any valid currency with current exchange rates downloaded from QAD EE in purchasing for all EAM vendors. A vendor's default currency for purchasing requisitions, POs, and BOs is the QAD EE supplier/accounting currency.

When the Use Only Vendor Currencies check box is selected, the ERP Vendor Download updates the Vendor Currency submenu with the currencies from QAD EE Supplier|Banking tab|Supplier Bank lines. The system only allows you to use those currencies for the vendor in EAM Purchasing in addition to the vendor's primary currency. The vendor's primary currency is still downloaded from Supplier|Accounting tab|Currency in EE. Currency lookups in requisitions, POs, and BOs present a selection based on the vendor currency submenu. The default is the primary currency for the vendor.

Customer-Reported Issues Resolved

The following customer-reported issues have been resolved in this release.

Fixes and Enhancements - EAM 12.6

Table 15 Fixes and Enhancements for EAM 12.6

Component	QAD Issue	Description
Analysis	EAMNET-5095	Changed the Date label to Effective Date for the Inventory Transaction History report.
	EAMNET-7639	Changes made to the Net Receipts by Vendor and Period Report. The Requisition Line Description, which is labeled Description, has been added in second line under Qty Received. Part number was also added in second line, under Line#. Sub Account now precedes Cost Centre and a Grand Total has been added at the end of the report.
	EAMNET-7640	Effective Date added to the Late Receipts Report filter criteria.
Finance	EAMNET-6624	Account validation changed to allow post on the EAM side. If the account validation fails the ERP API validation, a message is displayed and the transaction stops in EAM and is not sent to QXtend.
	EAMNET-6761	Unposted GL header description field should be copied to ERP's Journal Entry Description field instead of EAM's Lines Description. Limited EAM GL header description length to 40 characters.

Table 15 Fixes and Enhancements for EAM 12.6

Component	QAD Issue	Description
	EAMNET-7493	The following new fields, which are updated in Scheduled PO pay Line, have been added: Amount, Packing Slip, Receiver, PO Cost, Total Cost, and Locked. PO pay line is not allowing to update when it is locked.
Inventory	EAMNET-4895	Stock Replenishment should default the buyer information to the requisition.
	EAMNET-5729	Commodity Lookup was using the incorrect lookupID.
	EAMNET-5749	Add Site description to the Site field on Copy Inventory across Sites.
	EAMNET-7618	You can now create a requisition directly from Inventory using the Create Req action in the Action menu. The system automatically creates the requisition header and requisition line with defaults from the part selected in the Inventory browse.
Maintenance	EAMNET-3339	Receive error message trying to add a new line to a PM safety procedure list, PM Master Part List, PM Master Instruction List.
	EAMNET-5783	Monitor DUOM type is available to select for Equipment Readings. Can enter the following field values when Monitor specified for the Equipment Reading: Max High/High Actual Day/Month/Time and value Max Low/ LowActual Day/Month/Time and value.
	EAMNET-6626	The appserver continually requires to restart (Equipment infinite loop problem).
	EAMNET-7619	All Downtime browse added under the Maintenance Equipment folder in main menu, which shows all downtime and is not filtered by site. Equipment and Work Order fields are also available to add to the browse. The browse can be filtered, sorted and grouped based on the Downtime data columns. Export to Excel is available for the browse.
Purchasing	EAMNET-3163	Unable to perform return to vendor for non-stock purchase order converted from 11.1.
	EAMNET-324	Can set the Vendor PO Revision option for each site. When an Ordered PO or PO Line is modified (or a PO Line is added or deleted from an ordered PO) the system prompts, "Does this change represent a new revision that should be sent to the Vendor?" Select "Yes" and the system increments the Vendor Revision # on the PO. A follow-up message states "Please reprint the PO Document". The next time the PO is printed, the new revision number is displayed on the PO document.
	EAMNET-5665	EAM incorrectly unauthorizes and forces a reroute of the requisition and PO when Requisition Line Action "Modify Quantity" is performed to reduce quantity ordered.
	EAMNET-5732	Allow a user to change the location on a part receipt.
	EAMNET-6428	Requisition - Required date must be mandatory.
	EAMNET-6619	Cannot order PO when one requisition out of multiple requisitions attached to the PO has been canceled.
	EAMNET-7681	EAMNETS-510 Blanket Expiration Notice is not working correctly. Enabled all 3 parameters and fixed filtering so that the parameter is left blank and the program does not report every blanket.
System	EAMNET-5626	Provide utility to remove test data from customer databases.

New Feature Summary - EAM 12.5.1.2 - 12.5.2.2

Process Maps

Important The updated process maps require the client to have Internet Explorer 8 or higher. Using IE7 can cause the application to hang during startup.

Preserving Custom Report Layouts

This upgrade completely refreshes the report repository. If you have customized reports or prints, reapply your changes after the upgrade. A tool is available from QAD's EAM Support group that helps export report layouts before the upgrade begins and imports them again after the upgrade is complete.

Important Inform your system administrators before performing this upgrade.

The following report templates have been updated (most recent update):

- PO Document Print (12.5.2.2)
- Work Order Document Print (12.5.2.2)
- Request for Quote (12.5.2.1)
- Purchase Order Line (12.5.1.3)
- Blanket Order Release (12.5.1.2)
- Equipment Cost Summary (12.4.2.3)
- Top Equipment Cost (12.4.2.3)
- Equipment Cost Summary by CC (12.4.2.3)
- Cost Analysis by CC (12.4.2.3)
- Issue to Cost Center and Account (12.4.2.3)
- Equipment Cost Analysis (12.4.2.3)
- Consignment Report (12.4.2.1)
- Simulate Update (12.4.1.1)
- Transfer Report (12.4.1.1)

Registry Date Setting

New EAM Registry settings were introduced in 12.5.1.3:

- CustomLangDef
- DateFormat

Note The following are special instructions regarding date format for customers in Spain

Issue # EAMNET-4466 reported that a customer in Spain was having problems with the date formatting. The correct formatting for dates in Spain is DD/MM/YYYY. Normally, the system picks up this format from the local client's Windows settings but for Spain (es-ES), this did not happen.

QAD verified that the problem was occurring because the .NET Framework did not pick up the correct language settings for Spain. When EAM starts using the same appshell as QAD Enterprise Edition, this problem will be permanently fixed. Until then, a temporary solution was created and it involves two new System Registry settings:

- **CustomLangDef (Custom Language Defaults?).** When CustomLangDef is set to no, which is the default, the system encounters the date formatting error. When CustomLangDef is set to yes, then the new DateFormat Registry setting takes effect.

Note The default for CustomLangDef is set to no so that customers that do not have the date formatting issue are not affected by these changes.

- **DateFormat (Which Language Defaults).** DateFormat overrides the client's Windows language defaults for the date format. DateFormat only takes effect if CustomLangDef is set to yes.

For customers in Spain, set the DateFormat setting to es-ES.

Important Make sure to change the DateFormat setting with a valid Market entry. If this setting is changed to an invalid setting, the system errors out and you will have to use the Progress Editor to set the CustomLangDef setting to No. See <http://msdn.microsoft.com/en-us/library/dd251064.aspx> for all current valid Market Property values currently supported by Microsoft.

New Functionality

Analysis

- Financial Period and Year, Effective Date, Transaction Dates on Cost Analysis reports
- Blanket Order document
- Blanket Order number on the PO Print
- Date range for the Equipment Cost Detail Report
- Effective Date on the Late Receipts Report filter criteria
- Several fields on Open Purchase Orders Not Received report
- Date Created on the Request for Quote print
- Buyer's name, telephone number and email on the PO Print
- Site Description and Work Order Creator on the WO Print
- User Defined Fields on the Pick List available fields
- New report Uncapitalized Projects and Jobs

Maintenance

- Received Time to Work Order data entry
- Equipment Reading sub-detail to Work Orders
- 24-hour clock for Equipment downtime
- Controlled by Registry setting, AM/PM Clock
- Global edit the Planner field on Work Order records
- PM Route (Master Instruction Lists) capability
- Equipment Monitor type DUOM
- All Downtime browse
- Track Revisions for:
 - Master Instruction List
 - Master Instruction Steps
 - Master Parts List Header
 - Master Parts List Lines
 - Equipment
 - PM Template
 - Work Order

Purchasing

- Blanket Purchase Orders
- All Blanket Order Lines browse
- Blanket Order information on the All PO Lines browse

- Mandatory field options to Blanket Orders
- The originator of a requisition routing can now stop the approval process
- Order Date to the fields in the All PO Lines browse
- Global Order for Purchase Orders
- Global Authorize for Purchase Orders and Requisitions
- Exchange Rates are now by Domain
- Improved PO Receipts performance
- Vendor Multi-Currency Purchasing
- Vendor Part Number on the Receipt dialog
- Download multiple currencies for vendors from the ERP
- PO Vendor Revisions
- Track Revisions for:
 - Standard Clauses
 - Vendor Maintenance
 - Blanket Order
 - Blanket Order Line
 - Purchase Order
 - Purchase Order Line
 - Requisition
 - Requisition Line

Inventory

- All Stores Requisition Lines browse
- Requestor name to Stores Requisition List
- Inventory Maintenance as a third-level browse to Stock Replenishment
- Create Requisition from Inventory maintenance
- Track Revisions for Inventory

Finance

- Vendor information to the issue side on the GL Transaction browse
- Project and Job Allocations
- Project Approvals by Margin
- Define Asset data before capitalizing a project or job
- Enhanced PO and SO Scheduled Payments for Projects
- Track Revisions for Job and Project

System

- Export to Excel to the Revision browses
- Enhanced Inbox
- Updated Process Maps

General

- Additional Report header lines to Site

System Administration

- Date limitation to the currency download to improve performance
- Made Receiver and Return to Vendor substitutable reports
- User Defined Mail fields for Blankets
- Mandatory Fields for Stores Requisitions
- New Job Control Programs for:
 - Blanket Order Expiration
 - Forward Blanket Order Routing
 - CIM Load
 - Recalculate Reserved and Short quantities for inventory parts
 - Update Planned and On Order quantities for inventory parts
 - Refresh Last Voucher Number
 - Forward Routings
 - Equipment Refresh
 - Check PO Balance
 - Inventory Reorder
 - PO Header Status Check
 - Requisition Check for PO Routing
 - Send Emails when PM is Due
 - Submit PO/Receipts to MFGPRO

Revisit Role Setup

Note New options have been added to the security roles. When the upgrade is complete, review your existing roles to verify that they are set properly.

Table 16 Role Changes

Component	Description of Change
Maintenance Equipment	<ul style="list-style-type: none"> • In the Readings submenu, added Reset Actuals to the Action menu. • In the Readings submenu, added Update Tolerances to the Action menu. • Added the ERP Production Line submenu, which allows you to link the production lines from ERP directly to a specific equipment record. • Added the ERP Work Center submenu., which allows you to link the Work Centers from the ERP directly to specific equipment records. • Added the Revisions submenu.
Maintenance All Downtime	<ul style="list-style-type: none"> • Added the All Downtime browse, which shows all the downtime records for every piece of equipment.
Maintenance PM/PdM	<ul style="list-style-type: none"> • Added the Revisions submenu. • Changes have been made to the PM Master Parts List. Re-enabled this in Roles. • Changes have been made to the PM Master Instruction List. Re-enabled this in Roles. • Changes have been made to the PM Safety Procedures. Re-enabled this in Roles.

Table 16 Role Changes

Component	Description of Change
Maintenance Master Lists Parts List	<ul style="list-style-type: none"> Added the Revisions submenu.
Maintenance Master Lists Instruction Lists	<ul style="list-style-type: none"> Added the Revisions submenu. In the Instruction List Steps browse, added External Links to the Action menu.
Maintenance Work Orders Work Orders	<ul style="list-style-type: none"> Added the Revisions submenu. In the Instruction List submenu, added External Links to the Instruction List Steps Action menu. In the Instruction List submenu, added Reading History to the Instruction List Steps Action menu.
Inventory Inventory	<ul style="list-style-type: none"> Added the Vendor Cost submenu. Added the Vendor Parts submenu. Added the Revisions submenu. In the Inventory browse, added Create Requisitions to the Action menu.
Inventory Physical Inventory	<ul style="list-style-type: none"> In the Physical Inventory browse, added Simulate Update to the Action menu.
Inventory Stores Requisition Lists	<ul style="list-style-type: none"> In the Stores Requisition Lists browse, added Authorized to the Action menu.
Inventory Vendor Cost	<ul style="list-style-type: none"> Added the Vendor Cost browse.
Inventory Stores Requisition List All Lines	<ul style="list-style-type: none"> Added the Stores Requisition Lists All Lines browse.
Purchasing Purchase Orders	<ul style="list-style-type: none"> Added the Revisions submenu. In the Purchase Order browse, added Global PO Order to the Action menu. In the Purchase Order browse, added Order Added or Modified Lines to the Action menu. In the Purchase Order browse, added Global Authorize to the Action menu. Added the Purchase Order Line to the lower browse.
Purchasing Requisition Header	<ul style="list-style-type: none"> Added the Revisions submenu. In the Requisition browse, added Stop Routing to the Action menu. In the Requisition browse, added Global Authorize to the Action menu.
Purchasing Requisition Line	<ul style="list-style-type: none"> Added the Revisions submenu.
Purchasing Blanket Orders	<ul style="list-style-type: none"> Added Blanket Orders to Purchasing. Blanket Orders includes all the necessary tools to create, edit, and manage blanket orders in the Purchasing module.
Purchasing Vendor	<ul style="list-style-type: none"> Added the Vendor Currency submenu. Added the Revisions submenu.
Purchasing Currency	<ul style="list-style-type: none"> Added the Currency browse, which lists all the available currencies.
Purchasing Exchange Rates	<ul style="list-style-type: none"> Added the Exchange Rates browse.
Purchasing Approval Groups Blanket Order Approval Group	<ul style="list-style-type: none"> Added the Blanket Order Approval Group menu.
Purchasing Codes	<ul style="list-style-type: none"> Added the Exchange Rate Type menu.
Purchasing All PO Lines	<ul style="list-style-type: none"> Added the All PO Lines browse, which shows all the lines on every PO.
Purchasing All BO Lines	<ul style="list-style-type: none"> Added the All BO Lines browse, which shows all the lines on every blanket order.
Finance Projects	<ul style="list-style-type: none"> In the Projects browse, added Global Refresh to the Action menu. In the Projects browse, added Job Allocation View to the Action menu. In the Projects browse, added Capitalize New Asset to the Action menu. In the Projects browse, added Modify Capital Asset to the Action menu. Added the Fixed Asset Details submenu. Added the Revisions submenu.
Finance Projects Job	<ul style="list-style-type: none"> Added the Revisions submenu. Added the Fixed Asset Details submenu.

Table 16 Role Changes

Component	Description of Change
Finance Accounting Posted GL Transactions	<ul style="list-style-type: none"> In the Posted GL Transactions browse, added Global Re-Post GL Transactions to the Action menu.
Finance Accounting Groups	<ul style="list-style-type: none"> Added the Project Margin Approval menu.
General Business Units Domain	<ul style="list-style-type: none"> Added the Revision Control submenu, which allows you to activate revision control for the Standard Clause and Vendor menus.
General Business Units Sites	<ul style="list-style-type: none"> Added the Revision Control submenu, which allows you to activate revision control for the Blanket Order, Blanket Order Line, Equipment, Inventory, Job, PM Template, Project, Purchase Order, Purchase Order Line, Requisition, Requisition Line, and Work Order menus.
General Codes Languages	<ul style="list-style-type: none"> Changes have been made to the Languages menu. Re-enable this in Roles.
General Revisions	<ul style="list-style-type: none"> Added the Revisions menu.
System Administration System Control	<ul style="list-style-type: none"> In the System Control browse, added Run Memcheck to the Action menu. Added the Revision Control submenu, which allows you to activate revision control for the Master Instruction List, Master Instruction Steps, Master Parts List Header, and Master Parts List Lines menus.
System Administration PO Reroute/Notify Fields	<ul style="list-style-type: none"> Added the PO Reroute/Notify Fields menu.
System Administration Production Line Mapping to ERP	<ul style="list-style-type: none"> Added the Production Line Mapping to ERP menu.

Customer-Reported Issues Resolved

The following customer-reported issues have been resolved in this release.

Fixes and Enhancements - EAM 12.5.2.2

Table 17 Fixes and Enhancements for EAM 12.5.2.2

Component	QAD Issue	Description
Analysis	EAMNET-5760	Added project description to the WO print.
	EAMNET-6625	Inventory Weighted Average Report has \$ sign.
	EAMNET-7254	Added the Vendor's e-mail in Report Designer on Purchase Order Document.
	EAMNET-7256	Added buyer information to the PO Document Print
Finance	EAMNET-5652	EAM allows submit to QAD EE transactions with blank Project account when this is not allowed by the QAD EE account setup.
	EAMNET-6427	Perform account validation for Projects.
	EAMNET-6437	When doing a Requisition it does not validate whether the GL account of EE requires or does not require a project.
	EAMNET-7072	SO Scheduled Payment: Cannot delete an SO Pay line from the schedule.
	EAMNET-7073	SO Scheduled Payments: Can use SO SHIP action for a SO Pay Line that has no % or amount entered.
	EAMNET-7082	SO Schedule Payments: Write Off should not require a job number.
	EAMNET-7112	If a change is made to a SO line that is not acceptable such as adding a % when an amount is already present, the correct message displays but you should revert what was entered back to 0 instead of have to select undo.
	EAMNET-7263	Provide an option to limit Project requested funding and Job allocated amount reductions up to the sum of: Total spent + Selected Est Net Avail funding option amounts (when those options have been selected for a Site)
General	EAMNET-5700	Remove development sites from system data.

Table 17 Fixes and Enhancements for EAM 12.5.2.2

Component	QAD Issue	Description
Inventory	EAMNET-2906	The lookup for Vendor from the Inventory Parts, Vendor Part subdetail displays the list of vendors from the default site of the user instead of the working site.
	EAMNET-5636	There is a "Process exception" error when deleting Vendor Part Price record.
	EAMNET-6134	Refresh is required on the Stock Replenishment browse.
	EAMNET-6719	Do not allow delete of an inventory location that is in use on an intransit record.
	EAMNET-7077	Stores Requisition Partial Issue now allows issue from a different location than the default.
	EAMNET-7243	Inventory Receive from Relocation should not allow receiving more than what is in transit
	EAMNET-7251	When issuing a Stores Requisition List with Source Site <> Exp Site then the system displays the message: "Please Note Site xxxx and Site yyyy have different accounting periods" even though both sites have the same open and current EAM GL accounting periods.
	EAMNET-7255	Physical Inventory browse should save record using the Enter key.
	EAMNET-7262	Update the description of the created Stock Replenishment from the job program description.
	EAMNET-7471	Able to relocate a part from other sites when part is on a physical inventory.
	EAMNET-7473	The Issue action on Stores Requisition List does not validate the project/job spending limit.
	EAMNET-7475	Inventory Exp Acct No lookup is not displaying records from the specified expense site.
	EAMNET-7476	Work order receipt drives the on hand quantity negative.
	EAMNET-7492	Allow nonstock parts on stores requisitions. Added functionality to close Stores Req line and header when completed if the Site setting to Auto Close Stores = Yes. Business case to add back NS and Stock Parts "Auto Issue". Many customers want to reference an item that they normally do not stock but required for annual or semi-annual PM's. They build a Parts list that is linked to a PM referencing this part so it can be ordered from the stores requisition when the PM is issued. In addition to including nonstocks on stores requisition, a Requisition/PO is created from the stores requisition so it is all linked to the work order. When these POs are received and all parts are issued from the stores requisition, the stores requisition automatically is closed if the "Auto close Stores Requisition" is set to yes.
EAMNET-7636	In Inventory, if the user selects "Receive from work order", then user receives an error message saying that the "Total Debit and credit are not equal ...", when the total debit and credit are equal.	
Maintenance	EAMNET-5708	ERP Production Line lookup should follow working site.
	EAMNET-6618	When creating a new Service Request, based on the work order default Status for SR and Send Mail is set to yes, the "Notify" person or mail group should receive mail notification.
	EAMNET-7245	When you enter a downtime for a past date, if downtimes already exist for the past date, it errors.
Purchasing	EAMNET-5660	PO Receipts are allowed on inactive items.
	EAMNET-6511	Added Mandatory Fields to the Return to Vendor module and the Requisition Header.
	EAMNET-6833	Added a job program to check for closed purchase orders with open requisition lines.
	EAMNET-6941	Made EAM to ERP Integration Improvements: PO Updates, Receipts and Returns.
	EAMNET-7081	The BO header and line status do not change between O & P consistently. Following reauthorization of a BO, some lines may remain in status O while others change to P. The result appears to depend on the initial cause of the BO becoming unauthorized.
	EAMNET-7117	Receiver number is not assigned correctly for return to vendor records if you do not exit the browse between transactions.

Table 17 Fixes and Enhancements for EAM 12.5.2.2

Component	QAD Issue	Description
	EAMNET-7247	Requisition allows both project and equipment.
	EAMNET-7260	A user with enough spending authorization should be able to approve a requisition even if they are not in the approval group.
	EAMNET-7363	Vendor part number should not exceed 30 characters.
	EAMNET-7365	Nonstock returns do not create the trgl_det record in the ERP.
	EAMNET-7796	PO Returns updated the PO receipt cost incorrectly.
	EAMNET-7822	Add domain to PO Integration searches to improve performance.
System	EAMNET-3915	Three level browse requires refresh to populate the second and third levels.
	EAMNET-6153	Refresh required on multi-level browse.
	EAMNET-6527	When you delete a browse selection, it does not remove the header.
	EAMNET-7080	Cannot save changes to the only record in an updatable browse.
	EAMNET-7122	Made Index changes to 12.5 maintenance for performance.
	EAMNET-7665	Client memory leaks cause locking.
System Administration	EAMNET-7195	Add a new mandatory menu option called "Blanket Order" and Action is "Release". Include all current available fields on the release screen as selections.

Fixes and Enhancements - EAM 12.5.2.1

Table 18 Fixes and Enhancements for EAM 12.5.2.1

Component	QAD Issue	Description
Analysis	EAMNET-5727	Inventory with Location causes slow performance.
	EAMNET-6129	Work Order Document Report Problem Statement Section is too small.
Finance	EAMNET-5733	Add commas to the values in Projects Costs for easier UI.
	EAMNET-6628	If Project Allocation is set to No, and a user adds an "allocation" (Job) amount greater than the Auth Project, the user should be stopped and Proj funding should be increased and re-authorized.
	EAMNET-6715	After GL's are created but before they are sent to QXtend, add validation of accounting codes of GL's.
	EAMNET-6716	Enhance posted general ledger browse.
	EAMNET-6898	SO Line Unit Cost enabled on Project SO Scheduled Payments.
	EAMNET-6900	In SO Scheduled Payments, you are able to enter both % and amounts for invoicing on multiple SO Pay lines for the same SO line.
	EAMNET-6934	No GL validation warning is displayed for Post Labor or Close Physical Inventory.
	EAMNET-6942	Project/Job Allocated amount is not validated correctly.
General	EAMNET-6182	The site lookup in the report Xref does not show all sites where the user is authorized.
Inventory	EAMNET-4485	Stock Replenishment: New Record Browse Issue with Vendor Desc.
	EAMNET-4872	Performance: Inventory Valuation FIFO Cost Report.
	EAMNET-5709	Should not be able to select auto issue or non stock items on a Stores Requisition.
	EAMNET-7199	Copying parts error saving DataSet Progress error 13011.
Maintenance	EAMNET-5703	Domain is incorrect when creating an ERP work center.
	EAMNET-5712	Data definition for po_text on wo_parts is only 16 chars.
	EAMNET-5746	Service Requests: Only enable the Alert field if an Alert Priority has been entered.
	EAMNET-6302	If you Edit a saved Filter with SITE, it returns NO DATA.
	EAMNET-6622	Sale order Line amount updates incorrectly when multiple lines in Projects Schedule Payment SO.

Table 18 Fixes and Enhancements for EAM 12.5.2.1

Component	QAD Issue	Description
	EAMNET-6943	SO Scheduled Payments: Able to update SO line and % values when SO Pay line is Complete = yes and Locked = yes.
	EAMNET-6944	SO Scheduled Payments: The lookup for Jobs on SO Pay line is present based on user's primary site and not site for Project.
Purchasing	EAMNET-5663	Add the PO Text from the requisition line to the Quote Print.
	EAMNET-5745	Cannot process a receipt because line amount is rounded to \$.00.
	EAMNET-5767	Corrections for Planned and On Order quantities.
	EAMNET-6720	Duplicate PO line number created for manually entered Requisition line.
	EAMNET-6758	Add Ordered Date to the All PO Lines browse.
	EAMNET-6904	If Expiration Date is changed on a BO, do not validate on parts that are NS that may exist on multiple BOs.
	EAMNET-6936	Fix vendor Download to check the vd_data_complete flag.
	EAMNET-7365	RTV not posting the trgl_det for nonstocks.
Reporting / Filtering	EAMNET-3099	Filter mechanism stores dates as character / literal not date.
	EAMNET-3317	Duplicate Flags exist in fields frame while creating filter for Posted GL Transactions.
System Administration	EAMNET-5653	Job Program refresh gives error.
	EAMNET-6511	Add Mandatory Fields to the Return to Vendor module and the Requisition Header.
	EAMNET-6623	Systemadministration Jobprograms refreshvoucher.p does not work with MFG/PRO SE.
	EAMNET-6928	Vendor Download should be Domain specific.

Fixes and Enhancements - EAM 12.5.2**Table 19** Fixes and Enhancements for EAM 12.5.2

Component	QAD Issue	Description
Analysis	EAMNET-5743	Add Buyer information to the Quote document.
	EAMNET-5757	There are two Date fields on the Labor Transaction by CC and Labor Transaction by CC/Acct No reports filter criteria list.
	EAMNET-6430	PO Text on the Requisition does not appear on the PO.
	EAMNET-6524	For the Pick List Document in the Report Designer, add the department and cost center description to the stores requisition document for printing.
Data Entry	EAMNET-6392	Stores Requisition allows over issue using partial issue when two users click at the same time.
Finance	EAMNET-5301	Copy action should copy the project's external inks.
	EAMNET-5627	Update period warning when posting between sites.
	EAMNET-5635	Activities maintenance does not validate the account information entered.
	EAMNET-5645	Removing the Spending Estimate does not update the Est to Complete on a job.
	EAMNET-6293	Improve performance of the Job Program Currency download. Note: The DaysPrior parameter is added. For example: DaysPrior = 30
	EAMNET-6435	Stores Requisitions issue for consignment parts should use the consignment GL accounts.
	EAMNET-6513	If "Use Allocation" is set to No, then do not require Jobs to carry any budget values.
General	EAMNET-5697	Sites validate the Bill To and Ship To values incorrectly.
Integration	EAMNET-6262	Install EAM 12.5.1 faapim.p does not compile.

Table 19 Fixes and Enhancements for EAM 12.5.2

Component	QAD Issue	Description
Inventory	EAMNET-3079	Physical Inventory should not allow the same part to be on more than one open Physical Inventory records.
	EAMNET-4308	Stores Req List Action>Returns should display only issues from that Stores Req Issue.
	EAMNET-6555	Simulate Update FIFO cost report is incorrect when write off is equal to the qty in oldest cost.
Maintenance	EAMNET-4772	Display issues on the Equipment Downtime data entry.
	EAMNET-5686	In EAM, you can not look up down time in WO or Equipment.
	EAMNET-5689	Update the Add Time field on Work Order Add Time in a more user friendly format.
	EAMNET-5699	When Issue base is "Today", the PM due date is calculated incorrectly for Hungarian Language.
	EAMNET-6423	When the "As Left" code is entered in WO or during a WO status change, EAM mail system does not send email to WO order notify person.
	EAMNET-6512	Add ability to globally edit the Planner on the Work Order.
	EAMNET-6556	Do not allow update of the PM Master lists in a PM Template.
	Purchasing	EAMNET-5539
EAMNET-5656/ EAMNET-6594		EAM allows you to set PO to Ordered status with a vendor that does not exist in MFG.
EAMNET-5698		PO Receipts does not display a prompt to print the Receiver Doc after a warning.
EAMNET-5723		Improve PO Receipts performance.
EAMNET-6133		If ERP database is disconnected during a PO Receipt, no GL transaction is posted.
EAMNET-6142		When return to vendor crosses LIFO/FIFO stacks, not all transactions are transferred from EAM to EE.
EAMNET-6391		Adding a requisition to an authorized PO does not unauthorized the PO.
EAMNET-6529		EAM allows a user to close a PO when the PO is in routing.
	EAMNET-6759	Add Date Ordered to the available fields for All PO Lines browse.
System	EAMNET-6510	Enable export to Excel feature on all Revision menus.

Fixes and Enhancements - EAM 12.5.1.3**Table 20** Fixes and Enhancements for EAM 12.5.1.3

Component	QAD Issue	Description
Finance	EAMNET-5670	When adding percentage values for Scheduled SO payment, the following error is received: "Total percent cannot exceed 100".
	EAMNET-6128	Project Copy is not using the working site.
	EAMNET-6421	Unposted GL entries out of balance.
Inventory	EAMNET-5702	No records are displayed in the lookup when returning stores across sites.
	EAMNET-5711	Mail notification not sent for inventory below reorder or safety stock.
	EAMNET-6137	Partial search on Physical Inventory sub-screen or modify Count values should not cause the program to crash.
	EAMNET-6185	Issue across sites gives an error message.
Maintenance	EAMNET-5405	Receive from Work Order should default the cost applied to the work order.
	EAMNET-5687	Incorrect lookup for Rebuild Location in Work Orders in different source site.
	EAMNET-5714	Location code quantity should display on the WO Issue.
	EAMNET-6126	Equipment Downtime not calculating correctly.
	EAMNET-6135	Creating a work order from a PM should open the work order browse.
Purchasing	EAMNET-5655	Error when processing the 9th routing.

Table 20 Fixes and Enhancements for EAM 12.5.1.3

Component	QAD Issue	Description
	EAMNET-5668	Keep updated pricing during Requisition copy.
	EAMNET-5683	Invalid location error during PO Receipts.
	EAMNET-5694	PO Authorization validation does not exclude canceled requisitions.
	EAMNET-5756	Incorrect quantity received in the ERP for returns and cancels.
	EAMNET-6125	Correct Account lookup on Requisition to filter to cost center.
	EAMNET-6127	Special characters in PO Text can cause a record lock.
	EAMNET-6130	Show PO Lines instead of Req Line numbers when receiving.
	EAMNET-6139	The GL validation on the PO receipt is using the default site associated with the user instead of the active site.
	EAMNET-6157	Reopen requisition lines should be unauthorized if the tolerance limit is exceeded.
	EAMNET-6184	Clause from EAM is truncated in EE.
	EAMNET-6261	SubAccount validation for Stores Requisition fails if defined for multiple account ranges.
	EAMNET-6301	Additional GL Account validation for PO Receipts.
System Administration	EAMNET-4466	Add Registry setting for non-US date option. See note above regarding the Registry Date setting.
	EAMNET-6296	New Job Program to check the PO status.

Fixes and Enhancements - EAM 12.5.1.2**Table 21**

Component	QAD Issue	Description
Analysis	EAMNET-5538	Add Currency to Purchase Order and Release documents.
Finance	EAMNET-4730	Unable to modify existing line on Unposted GL.
	EAMNET-5709	Do not allow entry of non-stock parts on Stores Requisition Lines.
	EAMNET-5717	Allow capitalizing assets for locked projects.
Inventory	EAMNET-5715	Should be able to add Inactive parts to Physical Inventory.
	EAMNET-6034	Validation for Cost Center on Stores Requisition List issue did not validate to the correct value.
Maintenance	EAMNET-5695	Lookup for Assigned from the Assigned sub-detail does not filter to active site.
	EAMNET-5763	Equipment Global Edit displays error on Location.
Purchasing	EAMNET-5407	Limit Receive Qty to two decimal places.
	EAMNET-5688	Add an option for mandatory fields Project or Equipment on Auto Issue Requisitions.
	EAMNET-5705 / EAMNET-5672	Quantity problems when 2 users are receiving the same purchase order at the same time.
	EAMNET-5740	Rounding transaction created in error.
System	EAMNET-5731	When you leave a field, validate that the Cost Center, Account or Sub-Account is active in EAM and exists in the ERP.
System Administration	EAMNET-5738	Copy of Job Program should not copy "Last" fields in Status detail.
	EAMNET-5897	Batch Job to report purchase orders out of sync with the ERP.

Fixes and Enhancements - EAM 12.5.1.1

Table 22 Fixes and Enhancements for EAM 12.5.1.1

Component	QAD Issue	Description	
Analysis	EAMNET-3271/ EAMNET-5323	Added 3 fields to the Site record for availability on the Report Header.	
	EAMNET-4175	Add Date Created to the Request for Quote print.	
	EAMNET-4202/ EAMNET-5352	Add the Buyers name, telephone number and email to the PO Print.	
	EAMNET-4753/ EAMNET-5364	The Cost with Tax field on the Requisition is only the total of the last line of the requisition with the tax added.	
	EAMNET-5027	Vendor Returns Print from Analysis does not filter to the work order properly.	
Finance	EAMNET-4878/ EAMNET-5198	Unposted GL transactions-error in a loop.	
	EAMNET-4879/ EAMNET-5215	Unposted GL Transaction Spend Limit incorrect.	
	EAMNET-4889	Project AP Variance should be: Sum Budget – Sum Total = Sum Variance	
	EAMNET-5029	Closing a parent job does not close the requisitions and purchase orders for the child jobs.	
	EAMNET-5040/ EAMNET-5335	Do not allow edit to requested funding below total spent on a project.	
	EAMNET-5041/ EAMNET-5336	System does not edit the requested funding correctly.	
	EAMNET-5277	Curr Capitalize and Uncapitalized amounts are not updated in Fixed Asset Detail for Modify Capital Asset action.	
	EAMNET-5302	Location and Service Date are enabled on the Modify Asset or Job Asset actions entry on Project after it has been posted.	
	EAMNET-5402	EAM should not allow closing a project, job or sub-job attached to ordered POs.	
	EAMNET-5408	In Modify Asset Error message, the total Spent amount is truncated to single number.	
	EAMNET-5409	Can create a default asset detail for a job level that cannot be capitalized.	
	General	EAMNET-4465/ EAMNET-5213	Do not allow invalid languages in EAM.
		EAMNET-4898/ EAMNET-5214	In Buyer sites, there are Missing sites in the lookup.
Inventory	EAMNET-2724	EAM is mixing up the display of the Vendor owned and Company owned Consignment parts on the Issue Consignment Inventory screen.	
	EAMNET-3685/ EAMNET-5219	Add Requestor name to the Stores Req List Browse.	
	EAMNET-4582/ EAMNET-5212	Populate Vendor on the Stock Replenishment browse when using Enter instead of Tab.	
	EAMNET-4893/ EAMNET-5225	In Physical Inventory, the Global Add Default Site for User populates when the Active Site Should be Used.	
	EAMNET-4902/ EAMNET-5197	Consignment Stack is not updated correctly in Stores Requisition List Issue for consigned parts.	
	EAMNET-5031/ EAMNET-5333	Added a Vendor Part price schedule for another currency. I am forced to make the "From Qty" greater than the "To Qty" of the initial line if the Exp Date is the same.	
	EAMNET-5280	When the BO does not have enough money to complete the order, performing a Blanket Release from a stock run does not accurately create Requisitions.	
	EAMNET-5281	Taxable flag in Inventory defaults to selected on Add of a new part.	
	EAMNET-5303	Modify Cost Action in Inventory does not accept the value 0.00.	
	EAMNET-5305	Selecting alternative part location returns an invalid error message.	
EAMNET-5496	Vendor Lookup on Stores Req List does not work.		

Table 22 Fixes and Enhancements for EAM 12.5.1.1

Component	QAD Issue	Description
Maintenance	EAMNET-3363/ EAMNET-5195	EAM does not handle work order close properly when work order has store req attached.
	EAMNET-4880	Notification for PMs Due when Issue Method = DUOM.
	EAMNET-5417	The Equipment Global Refresh does not work.
Purchasing	EAMNET-4581/ EAMNET-5344	PO receipts allowed against inactive cost centers.
	EAMNET-4586/ EAMNET-5216	Add Order Cost and Total Cost as non updateable fields to the PO Receipt screen.
	EAMNET-4854	As a Buyer, I want to be able to use the same non-stock part number on multiple blanket orders.
	EAMNET-4862/ EAMNET-5223	Lookups need to be filtered on the Filter Criteria for All BO Lines and All PO Lines.
	EAMNET-4874/ EAMNET-5347	Effective date in EE from EAM receive PO transactions are wrong when receive is done backwards.
	EAMNET-4881/ EAMNET-5361	If a requisition is created and expensed to a work order (Auto-Issue=yes), do not create a stores requisition list.
	EAMNET-4886	Date due on PO should pass down to lines.
	EAMNET-4894	Do not change header to Auto Issue = Y when an auto issue requisition line is added.
	EAMNET-4900/ EAMNET-5431	Changes on Requisition Header do not check the mandatory fields before passing to the Requisition Line.
	EAMNET-5018/ EAMNET-5337	Purchase Order copy does not number the lines correctly.
	EAMNET-5020/ EAMNET-5220	Do not allow a purchase order to be approved before the requisition is approved.
	EAMNET-5023/ EAMNET-5354	The Quantity Open on the purchase order in the ERP is not correct when performing a cancel and non-cancel vendor return on the same PO.
	EAMNET-5109/ EAMNET-5444	Req/PO/BO authorization project/job validation is incorrect and has performance impact proportional to the number of lines.
	EAMNET-5278	Receipt done in same currency as Receipt Site Base currency and GL transactions created based on User's primary site base currency.
	EAMNET-5410	Non Base currency Released PO doesn't update the Currency Amount and Currency (B) amount or the Expense Amount and Expense (B) Amount.
EAMNET-5540	Message to change Req header to Auto Issue appears twice.	
System Administration	EAMNET-4191/ EAMNET-5334	When you remove a user's email address and then unselect Receive Email?, the system prompts that the email address is mandatory. You are then not allowed you to un-select Receive Email.
	EAMNET-5418	Transform the Equipment Refresh batch job.

QAD Field Service Scheduler 3.2

QAD Product Name Version: 3.2

Date: September 2013

QAD Enterprise Applications Version:

FSS 3.2.1 supports QAD 2008 SE (.NET UI 2.9.4.41), 2009 SE (.NET UI 2.9.4.41), 2010 SE (.NET UI 2.9.4.41), 2011 SE (.NET UI 2.9.4.41), 2012 SE (.NET UI 2.9.4.41), 2011 EE (.NET UI 2.9.3.65), 2011.1 EE (.NET UI 2.9.3.79), 2012EE (.NET UI 2.9.5.123), 2012.1 EE (.NET UI 2.9.5.123), and 2013 SE (.NET UI3 2.9.6)

About This Release

This release is made to support QAD 2013 SE and contains no fixes or enhancements.

If you use FSS with QAD 2013.1 EE, ensure that you install FSS 3.1.2.

QAD Mobile Field Service 3.3.1

QAD Mobile Field Service Version: 3.4

Release Date: September 2013

QAD ERP Compatibility: QAD 2008 SE, 2009 SE, 2010 SE, 2011 SE, 2012 SE, 2013 SE, 2009.1 EE, 2011 EE, 2011.1 EE, 2012 EE, 2012.1 EE, 2013 EE, 2013.1 EE

QXtend Compatibility: 1.7 or later

Languages: English, French, Castilian Spanish, Latin American Spanish, German, Dutch, Italian, Polish, Portuguese, Simplified Chinese, Traditional Chinese, Japanese

This release includes the following changes:

- This release supports Microsoft Windows 8 operating system.
- This release supports multiple users running synchronization simultaneously.
- With the MFS client of this release, you can download the new FSR templates from the server, if any.
- This release fixes the issue that other users, except for the user who installed MFS, could not use the MFS client installed for all users. Now, all users on the operating system can run the MFS client after you install it choosing the For All Users option.
- This release fixes the issue of incorrect price when recording Labor/Expense through MFS.

QAD Planning and Scheduling Workbenches 3.3.5

Planning and Scheduling Workbenches version: 3.3.5

QAD Enterprise Edition: 2010.1, 2011, 2011.1, 2012, 2012.1, 2013, and 2013.1

Release Date: October 2013

Prerequisites: 2010.1EE, 2011EE, 2011.1 EE, 2012 EE, 2013 EE, or 2013.1 EE release installed

Important Because the Planning and Scheduling Workbenches are powerful tools that perform intensive processing, depending on the data volumes your planners/schedulers need to process, it may be necessary to allocate an additional processor (core). This can only be determined after you try the application in your environment.

Supported languages: US English, Castilian Spanish, Latin Spanish, Dutch, French, German, Italian, Japanese, Polish, Portuguese (Brazilian), Simplified Chinese, Traditional Chinese, Korean, and Czech.

User Guide: *Planning and Scheduling Workbenches*, item 70-3173-2013.1EE-Rev1.

Administration Guide: *Planning and Scheduling Workbenches*, item 70-3174-2013.1EE-Rev1.

Install Guide: *Planning and Scheduling Workbenches*, item 78-0947-3.3.5EE.

Conversion Information: Planning and Scheduling Workbenches conversion information can be found in *Administration Guide: Planning and Scheduling Workbenches*.

Planning and Scheduling Workbenches Enhancements

Routable Items

The system now supports routable items for discrete items.

Personalization Architecture

Personalization architecture provides a way to easily add columns, fields, and associated processing logic to any of the workbench grids that reference the production order master and/or component detail tables.

New sections and fields are included in Workbench Control (22.20.24) as part of this enhancement.

Note For restrictions and additional information, as well as instructions, code examples, and customization sample scenarios, refer to *Administration Guide: Planning and Scheduling Workbenches*, version 70-3174-2013.1EE-Rev1.

- Use the following Additional Default Display Fields section in Workbench Control:

Work Order. Enter fields, separated by commas, to add to the production order grid column pull-down list. The pull-down list shows you the default columns that you can add to the grid.

Work Order Component. Enter fields, separated by commas, to add to the production order component detail grid column pull-down list. The pull-down list shows you the default columns that you can add to the grid.

- Use the following Additional Default Edit Fields section in Workbench Control:

Work Order. Enter fields, separated by commas, in the work order display list that are editable.

Modify Filters for Browsers

You can now modify the filters that the supporting browsers use when they display records. You can modify to filter by dates, or by other specific values, such as an order status, or a specific numeric value that has meaning in your company within item numbers. For example, you can view all transactions for the last two years, only records with dates of today plus all future dates, or specify a specific date upon which to view records. You do this by modifying the `ConfigControl.xml` file.

Note Chapter 4 of *Administration Guide: Planning and Scheduling Workbenches* tells you how to access and modify the `ConfigControl.xml` file and explains the file layout. It also provides a table of valid date entries in the correct format for the XML file. It also includes several code examples that show you how to make specific changes to filter records.

Modifying Browse Record Limit

By modifying the `ConfigControl.xml` file, you can change the default number of records that display in the supporting browsers in the workbenches. Chapter 4 of *Administration Guide: Planning and Scheduling Workbenches* provides code examples that show you how to change the record limit for the browsers.

New User Preference Scheduling Options

Several enhancements were made to the Scheduling tab of the User Preferences window in the workbenches. Changes were made to streamline and enhance date calculations. The following changes were made:

- When calculating production order dates using the context menu selections Calculate Due Date or Calculate Release Date, you had to select these functions multiple times before getting the correct date calculation. This has been resolved.
- The production order Duration field is now calculated correctly when the release date is in the past and the due date is either today or in the future. Before this release, the Duration field was not always calculated correctly in this situation.
- Anchor Order Date and Order Duration Calc Method were removed.
- Several new fields were added in place of the removed Anchor Order Date and Order Duration Calc Method fields. The new fields are grouped under the following three headings in the Scheduling tab of User Preferences, and each heading has several fields:
 - Date Calculation Rules By Order Status
 - Due Date Calculation Inputs
 - Release Date Calculation Inputs

The new Date Calculation Rules by Order section has the following fields, and each field has its own rule that informs the system which date to calculate when the order is in that particular status:

Planned. When the order has a P(lanned) status and the system calculates dates, the date (due versus release) assigned here is the date calculated.

Firmed. When the order is in F(irm), E(xplode) or A(llocate) status, and the system calculates dates, the date (due versus release) assigned here is the date calculated. The default is the release date.

Released. When the order is in R(eleased) status, and the system calculates dates, the date (due versus release) assigned here is the date calculated. The default is the due date.

Sequenced. When the order has been sequenced and the system calculates dates, the date assigned here is the date calculated. This setting takes precedence over the Planned, Firm, and Released user preference settings. The default is the due date.

Production Reported. When the order has production reported, and the system calculates dates, the date assigned here is the date calculated. This setting takes precedence over the Sequenced, Planned, Firm, and Released settings. The default is the due date.

The new Due Date Calculation Inputs section has the following fields:

Anchor Due Date. When Yes, the due date stays fixed during date calculations, unless you select the due date to be calculated.

Scheduled Duration. When Yes, the system uses the value in the production order Scheduled Duration field to calculate order dates. This value is usually the item's manufacturing lead-time.

Projected Duration. When Yes, the system uses the value in the production order Projected Duration Days field to calculate order dates. Projected Duration is calculated based on required capacity and various other inputs.

Planned Capacity. When Yes, a date's planned capacity is used to determine whether a production order can be scheduled for that date.

The new Release Date Calculation Inputs section has the following fields:

Anchor Release Date. When Yes, the release date stays fixed during date calculations, unless you select the release date to be calculated.

Scheduled Duration. When Yes, the system uses the value in the production order Scheduled Duration field to calculate order dates. This value is usually the item's manufacturing lead-time.

Projected Duration. When Yes, the system uses the value in the production order Projected Duration Days field to calculate order dates. Projected Duration is calculated based on required capacity and various other inputs.

Planned Capacity. When Yes, the system uses a date's planned capacity to determine whether a production order can be scheduled for that date.

Fig. 2
User Preferences

Using Schedule Maintenance with Workbenches Enabled for a Site

When you set the Use Plan/Sched Workbenches field to Yes in Site Maintenance (1.1.13), you can now use Schedule Maintenance (18.2.1 and 18.22.2.1) to enter repetitive schedules.

Using Schedule Maintenance with the workbenches enabled helps customers who have a need to upload schedules from third-party applications or use the workbenches to enter schedules for some production lines within a site, and still enter schedules in Schedule Maintenance for other production lines within the same site.

Note the following when using Schedule Maintenance to enter repetitive schedules when you enable the workbenches in Site Maintenance.

- When more than one scheduled production order exists for the same domain, item, site, production line, and/or due date, you:
 - Can only change the order quantity from a non-zero number to 0 (zero). When you change the order quantity to 0, the system deletes the corresponding set of scheduled orders for that due date.
 - Cannot make changes to the scheduled quantity, routing, or BOM.

When you try to make changes to the areas described, the system displays a message, indicating more than one order exists for the production order due date.

- When you modify the order quantity, the routing, or the BOM, the system updates the scheduled order.
- When you change the order quantity to 0, the system deletes the corresponding set of scheduled orders for that due date.
- When you enter a new record, the system creates a scheduled production order. The system accepts valid alternate routing and BOM codes and creates a repetitive schedule master record that matches the scheduled production order. However, the system does not store the repetitive schedule alternate routing and BOM code in the repetitive schedule master; instead, it stores that information in the scheduled production order. This is consistent with how the workbenches generate new scheduled orders.

Delete Repetitive Orders Option

You can now delete repetitive orders with a closed status using Schedule Delete (18.22.2.7). Deleting the closed orders ensures that you do not delete orders that are not yet complete.

New Quantity Available to Allocate Column in Shortage Report

A Quantity Available to Allocate column was added to the Workbenches Shortage Report. The system calculates quantity available to allocate as:

Qty with Available Status - Qty Allocated where

Qty with Available Status = in_qty_avail

Qty Allocated = in_qty_all

Production Line BOM and Routing

When production orders are firm and you specify a production line for the order, the system now automatically populates the BOM and Routing code from the production line item to the order. When you switch an order from one production line to an alternate, the system now populates the BOM and routing code attached to the item at the alternate production line. The system only defaults the BOM and routing for sites for which you enabled the workbenches.

The system updates production orders with a status of P(lanned) or F(irmed) with the BOM/routing code from the production line, and the system updates repetitive scheduled orders with a status of E(xploded). The defaults for the BOM/Routing codes are as follows:

- The BOM/routing codes for a production order default from the production line record only when you specify a production line on the order. When the BOM/routing codes are blank in the production line record, the codes are blank on the order.
- When you create a new record in Production Line Maintenance (18.22.1.1) for a production line/item, the system defaults the BOM/Routing code fields from Item-Site Planning (1.4.17) detail records when they exist, or from Item Planning Maintenance (1.4.7) master records when detail records do not exist. You can change the defaulted codes. The system validates BOM/routing codes.
- For existing records, Production Line Item Update (18.22.1.21) now includes the Update BOM/Routing selection field. For more information on the field, refer to MSW Setup section of *User Guide: QAD Planning and Scheduling Workbenches*, version 70-3127-2013.1EE-Rev1.

Important After installing this enhancement for the first time, you should run Production Line Item Update to have the appropriate sites/production lines. This lets the system default existing BOM/routing codes from either Item-Site Planning detail records or Item Planning Maintenance master records to the production line record. Once the Update program completes, you can update individual records on an as-needed basis and adjust the defaults when needed. Refer to *Installation Guide: QAD Planning and Scheduling Workbenches*, version 78-0953-2013.1EE

As part of this enhancement:

- In the Production Line Maintenance (18.22.1.1.) Item frame, you can now use new look-up browses attached to the following fields:
 - BOM Code field to show all available alternate BOM codes for the item
 - Routing field to show all available alternate routing codes for the item
- The system validates the BOM Code and Routing fields in Production Line Maintenance to verify that the code you specify is for a valid alternate code for the item. If not, the system warns you that the specified BOM or routing does not exist.

Additional Production Line Item Update Modifications

In Production Line Item Update, the Production Line field was modified so that when you specify a blank value in the field, the system updates all production lines for the specified site. You cannot leave Site blank.

Additionally, the Make Primary Line field now works in conjunction with the Production Line field. You can now only set Make Primary Line to Yes when you specify a production line in the Production Line field. When Production Line is blank, you cannot change Make Primary Line to Yes.

New Workbench Control Field

A new Enable Additional Default Fields was added to the Workbench Control File (22.20.24). The new field lets you control whether the personalization architecture is enabled or disabled. When set to Yes:

- You can enter a list of additional default fields to display in the Work Order or Work Order Component panels. Refer to *User Guide: Planning and Scheduling Workbenches*, 70-3173-2013.1EE-Rev1.
- The system sends the Additional Default Fields lists to the client.
- Various user exit programs are called; refer to the section on User Exit programs in *Administration Guide: Planning and Scheduling Workbenches*, 70-3174-2013.1EE-Rev1.

Fig. 3
Workbench Control Field

Planning and Scheduling Workbenches Fixes

- Schedule Maintenance (18.2.1 and 18.22.2.1) now shows improved performance when you add schedules. Previously, the system obtained data without domain considerations and called the schedule program using temp tables, which caused non-indexed scans on the work order master table; both issues caused a slower system performance when you added schedules.
- The PSW column heading labels now correctly display long labels you define in Label Detail Maintenance (36.4.17.5) and Label Master Maintenance (36.4.17.1). Previously, when the column label for some database fields had a non-blank column-label property, the system incorrectly displayed the caret (^) for fields for which you did not define labels in Label Detail Maintenance or Label Master Maintenance.
- Open, over-completed discrete production orders now display in the MSW/PSW. Previously, certain over-completed, open discrete production orders did not display in the workbenches.
- The system no longer incorrectly calculates production order dates when you reschedule a past due production order. Now, when you reschedule past due production orders to the present, you can reschedule them so that they retain the original order scheduled duration. Previously, in this scenario, the system recalculated the production order dates.

- The system now correctly highlights the Supply column and PQOH cell when you select a record in the Production Order Maintenance Components tab, then view the Supply/Demand Summary panel. Previously, the Authorized Receipts column and the PQOH cell within Supply/Demand Summary were not highlighted blue to reflect the current component selection's data.
- The Schedule Grid now correctly adjusts the focus of the display after you change a quantity that causes the item line to shift. Previously, when you changed the item quantity on an order that caused the Schedule Grid's focus to shift up or down, the cursor in the Schedule Grid remained in the same place prior to the shift of the line item display.
- The system now correctly translates labels for the Chinese language.
- The workbenches and QAD repetitive functions now explode global phantom component items in a manner consistent with the core ERP when you create scheduled orders. Previously, the workbenches and QAD repetitive and advanced repetitive functions did not explode global phantom component items in a similar manner.
- The system now correctly defaults the routing and BOM codes to the workbenches-embedded Production Order Maintenance when you create a new order and routing and BOM codes exist in Production Line Maintenance (18.22.1.1). Previously, the system did not default the BOM and routing codes when you created a new order in Production Order Maintenance.
- The system no longer leaves a blank for the production order operation start and due dates. Previously, operation schedule logic did not properly process for all production orders, causing blanks for the start and due dates.

QAD QXtend 1.8.4

QXtend Inbound

QXI Server Version: 1.8.4

Date: September 2013

QAD Enterprise Applications Compatibility: eB SP4 through current release

Supported Progress Releases: Progress 9.1E, OpenEdge 10.0B, 10.1A, 10.1B, 10.1C, 10.2A, 10.2B, 11.1, 11.2

Supported Java Version: Java 1.6 or higher

QAD QXtend Documentation: *User Guide: QAD QXtend (70-3190-1.8.4)* and *Installation Guide: QAD QXtend (78-0952-1.8.4)*

New and Changed Features

1 Configuration Data Transfer Enhancements

- Transferring QXI receiver APIs is supported in this release.
- Configuration data can be imported into a target system with different configuration names (for example, receiver name) by using a mapping file.
- Wildcard matching is enhanced to support multiple patterns.
- The template of the descriptor file can be generated for export.
- A report in text format is generated after a successful export/import. The report shows the detailed process results and warning messages.
- When running configuration bundle scripts, the system first checks whether the JAVA_HOME is set correctly.

2 Network Security Enhancements

- UIAPI connection pools support SSH connection using public/private key pairs.
- SIAPI and FinAPI connection pools support connection to SSL-enabled AppServers.
- QXtend installer is enhanced to support SSH connection with public/private key pairs for UIAPI Connection Pool.

3 A new method is available for developers to use QDoc SAX Writer to create a QDoc with session ID credentials.

4 More QDocs are available, including more than 150 easy on boarding QDocs for QAD SE and QAD EE and 21 new CRM APIs.

5 A new session context parameter `decimalseparator` is available. QXtend replaces the decimal separators in decimal string values with dots (.) before processing the QDoc. It is used for QDocs that have decimal values that do not use a dot as the decimal separator; for example, in European number format.

Fixes

Fix Description	Internal ID	Issue Affected Versions
If dbman is used and the adminserver is not using the default port, the QXtend Installer can now install and start QXODB correctly.	QXT-1512	1.7.2+
Configuration bundle scripts now check the action type and bundle ID specified in the descriptor file before further processing.	QXT-1485	1.8.3
In this release, users do not need to manually add <code>stty -icanon</code> and <code>stty ixoff</code> to the connection scripts or the QXI server startup scripts. The system adds them automatically.	QXT-1479	1.7+
Excelerator running on Windows system with language setting that does not use a dot as the decimal separator can now work with QXtend correctly. The fix works together with Excelerator 1.3 or higher versions.	QXT-1475	1.7+
Previously, QXtend 1.8.3 installer failed to compile QXtend Adapter against QAD 2013 SE. Now this issue has been fixed.	QXT-1465	1.8.3
Previously, during QXtend upgrade, Migrate Queue Configuration step reported an error when there was no queue defined. Now this issue has been fixed.	QXT-1464	1.8.3
Configuration bundle scripts can now run normally when the paths include spaces.	QXT-1459	1.8.3
The issues about the QDocs <code>enterCycleCountResults</code> and <code>maintainUsers</code> have been fixed for Excelerator use.	QXT-1431 QXT-1487	1.7+
Previously, when a <code>qdocSummary.log</code> file was created for a new day, the header was missing. In this release, the header is displayed correctly.	QXT-1421	1.8+
Start-timestamps and Finish-timestamps in <code>qdocInfo.log</code> are now consistent with the timestamps in other logs. Previously, the same start-timestamp could differ slightly in different logs.	QXT-1420	1.7+
When QXtend installer is deploying QXI/QXO servlet, it no longer checks Progress DLC so that it does not produce any issue when Tomcat is not on the same server as Progress.	QXT-1413	1.8.3
Inbound can now show the correct error message when the receiver name is not correct in a QDoc.	QXT-1379	1.8.3
The misleading field "Database Language" in the installer has been changed to a boolean field called "Database UTF."	QXT-1378	1.7+
QXtend can now return QDoc response when character "^" is in data values in the response. Previously, this character caused <code>ArrayIndexOutOfBoundsException</code> .	QXT-1376	1.7+
When QXtend is installed through QDT, Connection Method (SSH/Telnet) and Connection Port can now be configured correctly for UIAPI.	QXT-1363	1.8.3
When installing QXtend 1.8.3 against QAD EE versions before 2011 EE, the adapter compile reported errors. This issue has been fixed.	QXT-1360	1.8.3
The configuration bundle files can now be imported into Inbound or Outbound running on Windows servers.	QXT-1354	1.8.3

QXtend Outbound

QXO Server Version: 1.8.4

Date: September 2013

QAD Enterprise Applications Compatibility: eB SP4 through current release

Supported Progress Releases: OpenEdge 10.2B, 11.1, 11.2

Supported Java Version: Java 1.6 or higher

QAD QXtend Documentation: *User Guide: QAD QXtend (70-3190-1.8.4)* and *Installation Guide: QAD QXtend (78-0952-1.8.4)*

New and Changed Features

1 Configuration Data Transfer

- More configuration components are supported in this release. They are:
 - QXO BO registrations with message publishers
 - QXO subscriber profiles
 - QXO source application event type
- Configuration data can be imported into a target system with different configuration names (for example, source application name, message publisher name, or subscriber name) by using a mapping file.
- Wildcard matching is enhanced to support multiple patterns.
- The template of the descriptor file can be generated for export.
- A report in text format is generated after a successful export/import. The report shows the detailed process results and warning messages.
- When running configuration bundle scripts, the system first checks whether the JAVA_HOME is set correctly.

2 Message archiving is enhanced to free more qxodb database space.

Fixes

Fix Description	Internal ID	Issue Affected Versions
Previously, special characters were allowed in the BO names and the profile names, but they may cause issues in data publish, export/import, or query deployment. Now, only alphanumeric characters, dash, and underscore are allowed in BO names and profile names. The BOs and profiles having other special characters in the names cannot be saved.	QXT-1547	1.7+
The subscriber message resend issue has been fixed and a message in PEND status cannot be resent.	QXT-1455	1.7+
The BO creation issue in QXtend 1.8.3 has been fixed.	QXT-1430	1.8.3
“Logical Name” is corrected to “ID Name” on the Databases page of Source Application Configuration.	QXT-1429	1.8.1+
Resending subscriber message now works as expected when there are multiple subscriber profiles. The system resends the subscriber message to only the subscribers it belongs to.	QXT-1428	1.7+
The issue that domain could not be added to source application configuration in QXtend 1.8.3 has been fixed.	QXT-1427	1.8.3
In Outbound validate configuration, the logic to check whether QXO is enabled in the source application now runs correctly for early MFG/PRO versions that do not have domains.	QXT-1381	1.7+
Event Service now allows an event to be processed up to ten minutes without showing a DEAD status.	QXT-1380	1.7+
The subscriber message for the “Delete” operation can now be sent out when the subscriber profile listens to the operation. Previously, it was not sent out when the subscriber profile listened to “Delete” and did not listen to “Modify.”	QXT-1340	1.8+
The Archive service can now process all the raw messages and the subscriber messages that meet the criteria.	QXT-834	1.7+

Known Issue

QXtend 1.8.4 has not passed the certification test against Oracle database with OE 11.1 and 11.2 because of issues with OpenEdge. Contact QAD Support for details.

QAD Supply Chain Portal 13

Supply Chain Portal Version: 13

Date: September 27, 2013

Languages Supported: English

Component Technical Rewrite

The Poller server component of SCP—now called Supply Chain Cloud Sync (SCCS)—has been redesigned and technologically upgraded to improve performance and maintainability. This upgrade was made in this release.

Resolved Issues

ASN Container and Label Information

When an ASN line is deleted, related container and label information is now deleted correctly. Previously, the label information was not deleted and was extracted incorrectly in the SNF file. This release fixes this issue.

Auto Data Load

Auto Data Load functionality now runs Bulkload without errors. Previously, there were errors in the log file. This release fixes this issue.

Consigned Quantity

When consignment inventory is completely returned, the Consigned Qty column in Min/Max Browse now shows zero quantity. Previously, this column displayed an incorrect quantity. This release fixes this issue.

Kanban Record Updates

KanbanCard and KanbanLoop records are now updated correctly when a Kanban-type ASN is canceled through ASN Maintenance. Previously, the system did not update KanbanCard and KanbanLoop records. This release fixes this issue.

Password Expiration Alerts

When a Warning Days Prior to Expiration value is set in Company > Company Maintenance > Security tab, the system now sends the user only one e-mail alert per day. Previously, the system sent multiple e-mails to the user. This release fixes this issue.

Date/Time Stamps in ASN Export

ASN Export functionality now always generates files with a date/time stamp while exporting ASN data. Previously, the system sometimes generated files without a date/time stamp. This release fixes this issue.

Poller Connection to EAM Database

SCP Poller now connects to an EAM database successfully when the Poller is configured correctly. Previously, the Poller was not able to connect with an EAM database. This release fixes this issue.

QAD Warehousing

QAD Warehousing Version: QAD Warehousing for QAD 2013.1 Enterprise Edition

Release Date: September 2013

Supported languages: US English, Castilian Spanish, Latin Spanish, Czech, Dutch, French, German, Italian, Japanese, Korean, Polish, Portuguese (Brazilian), Simplified Chinese, and Traditional Chinese

User Guide: *QAD Warehousing*, item 70-3185-2013.1EE

Installation/Conversion Guide: QAD Warehousing installation information can be found in the installation documentation for QAD Enterprise Applications September 2013.1 Enterprise Edition.

Note The QAD Warehousing Enterprise Edition (EE) installation process differs from the QAD Warehousing Standard Edition (SE) installation process. Please review the installation and conversion guide before you begin installation or conversion.

Fixes

- The RF Receipts (1.8) option now correctly generates RCT-PO tasks when you receive a PO using the option.
- When you simulate an inventory item receipt and leave the Lot/Serial and Reference fields blank in Put Away/Loc Find Simulation (4.6.13), the program now displays locations considering their available capacity and the alternate UM for a size type that you specify as R in Alternate Unit of Measure Maint (4.5.1). Previously, the system displayed only one location for the entire simulated inventory receipt, regardless of the available capacity.
- Receipts - Unplanned (3.9) no longer displays an error, informing you to enter a code value longer than the defined field length, and correctly generates new pallet numbers when these conditions exist:
 - You define a UM conversion in Unit of Measure Maintenance (1.13) for the item.
 - The system uses the alternate UM as the logistics UM in Item-Warehouse Maintenance (80.4.11).
 - The length of generated pallets is greater than eight characters.

Previously, the system displayed an error and did not generate pallet numbers with these conditions.

Also, Receipts - Unplanned (3.9) now functions correctly and generates pallets in .NET UI when using logistics UMs.

- Order Whse Detail Status Inquiry (4.15.4.1) no longer displays a Progress error, informing you that the system cannot locate shared temp- or work-table definitions when you click the S(hipper) key in the Order Details frame.
- Pre-Shipper/Shipper Report (7.9.6) and Pre-Shipper/Shipper Workbench (7.9.2) now correctly display the container quantity to ship as 1 (one) for a pre-shipper line when you add a container for the line using:
 - RF BP Pick SO/DO (3.1)
 - BP Pick All (3.2)
 - Pallet Explosion (3.6)

Previously, the system displayed a 0 (zero) in the Quantity To Ship field.

- RF BP Pick SO/DO (3.1) and RF. BP Pick All (3.2) now display unpicked and picked quantities correctly when the quantity is greater than 9999 and you press the F3 key to display the cart contents. Previously, the system displayed question marks (?) for unpicked and picked quantity.

- Wave Selection (4.15.3) no longer displays unallocated lines when you create an order in Customer Scheduled Order Maint (7.3.13) and set Display Only Allocated Lines to Yes in Wave Planning Control (4.15.1.24). Previously, in this scenario, the system displayed unallocated lines.
- RF Pallet Explosion (3.6) no longer displays a Progress error, informing you of invalid characters in the numeric input when you set Generate Ref to Yes; then, confirm the pallet. Previously, the system displayed a Progress error in this scenario.
- Purchase Order Receipts (5.13.1) no longer has conversion factor problems when processing receipts.
- The RF PO Receipt (1.8) option now correctly creates tasks when you receive two different items with the same pallet reference number, and you create the purchase order with actual locations instead of a warehouse.
- The RF Select Task (1.2) no longer displays an error informing you that the change is not currently supported and lets you confirm multi-item/multi-lot pallet receipt tasks that the system creates when you:
 - Use RF PO Receipt (1.8).
 - Set the system flavor to B in QAD Warehousing Maintenance (4.1.1).Previously the system displayed an error and did not let you confirm tasks.
- In the .NET 2.9.4 version of QAD Warehousing, the system now sets the Multi Entry field to Yes automatically when you:
 - Define a logistics UM in Item-Warehouse Maintenance (80.4.11) to use as the receipt UM.
 - Receive in the base UM and update the Quantity field.
- The following programs no longer display an error that informs you that you cannot enter a code value longer than the defined field length and no longer prompts you to re-enter when generating pallet numbers:
 - Receipts - Unplanned (3.9)
 - Purchase Order Receipt (5.13.1)
 - Work Order Receipt Backflush (16.12)

