



QAD Enterprise Applications
Standard Edition

Installation Guide European Accounting for Progress

70-3254-2012SE
QAD Enterprise Applications 2012
Standard Edition
June 2012

This document contains proprietary information that is protected by copyright and other intellectual property laws. No part of this document may be reproduced, translated, or modified without the prior written consent of QAD Inc. The information contained in this document is subject to change without notice.

QAD Inc. provides this material as is and makes no warranty of any kind, expressed or implied, including, but not limited to, the implied warranties of merchantability and fitness for a particular purpose. QAD Inc. shall not be liable for errors contained herein or for incidental or consequential damages (including lost profits) in connection with the furnishing, performance, or use of this material whether based on warranty, contract, or other legal theory.

QAD and Standard Edition are registered trademarks of QAD Inc. The QAD logo is a trademark of QAD Inc.

Designations used by other companies to distinguish their products are often claimed as trademarks. In this document, the product names appear in initial capital or all capital letters. Contact the appropriate companies for more information regarding trademarks and registration.

Copyright ©2012 by QAD Inc.

EuropeanAccounting_v2012SE.pdf/biw/biw

QAD Inc.

100 Innovation Place
Santa Barbara, California 93108
Phone (805) 566-6000
<http://www.qad.com>

Contents

| | |
|---|-----------|
| Change Summary | v |
| Chapter 1 Installation Notes | 1 |
| Overview | 2 |
| European Accounting Configuration | 2 |
| Database Server Installation | 2 |
| Chapter 2 Installing the Database Server Files | 3 |
| Overview | 4 |
| Database Server Installation Considerations | 4 |
| Pre-installation for UNIX Servers | 4 |
| Pre-installation for Windows Server | 4 |
| Installing the Server Files on UNIX | 5 |
| Installing the Server Files on Windows | 5 |
| Installing Language Files | 6 |
| Installing the Languages Files on UNIX | 6 |
| Installing the Languages Files on Windows | 7 |
| Configuring Database Sets | 7 |
| Generating the Scripts | 7 |
| Chapter 3 Character Client Installation | 9 |
| Overview | 10 |
| Character Client Installation | 10 |
| Installing Character Client Files | 10 |
| Installing the Client Files on UNIX | 10 |
| Installing the Client Files on Windows | 11 |
| Client Set Up | 11 |
| Chapter 4 Windows Client Installation | 13 |
| Overview | 14 |
| GUI Client Installation | 14 |
| Installing GUI Client Files | 14 |
| Installing the Client Files on Windows | 14 |
| Client Set Up | 14 |

Chapter 5 Compiling European Accounting17

Overview 18
 Compiling Application Code 18
 Adding European Accounting Client File Directory to the PROPATH 18

Chapter 6 Additional Set Up23

Overview 24
 Processing the Initial Data 24
 Loading and Removing Data 24
 Before You Proceed 25
 Processing the Base Data 25
 Processing Service Pack Data 27
 Processing the Optional Data 27
 Loading the Field Help 27
 Creating a Multi-language System 28

Chapter 7 QAD Standard Edition Installations.....29

Overview 30
 Setting Up GTM 30
 Setting Up New GL Accounts 30
 Control Files 31
 Installation Utilities 33
 Utility for Creating GL Periods 33
 Utility for Assigning Daybook Data to Existing Data 34
 Bank Account Validations of Addresses 35
 Intrastat 35
 Payment Methods 35
 Define Banks and Payment Methods in Bank Maintenance (26.13) ... 36

**Chapter 8 Installation Over an Existing QAD Standard Edition Installation
37**

Overview 38
 Convert Bank Accounts (eubkcnv.p) 38
 Assigning Payment Methods to Open Vouchers (euckpcnv.p) 38
 Assign Bank and Payment Method to Open AR Documents (euckrcnv.p) 40

Chapter 9 Base Currency Conversion41

Overview 42
 Base Currency Conversion 42
 Conversion Steps 42
 Changing Startup Scripts 42

Change Summary

The following table summarizes significant differences between this document and previous versions.

| Date/Version | Description | Reference |
|---------------------|----------------------------|------------------|
| June 2012/2012 SE | Rebranded for 2012 SE. | --- |
| March 2012/2011 SE | Updated guide for 2011 SE. | --- |

Installation Notes

This chapter describes installation configuration and optional data considerations.

Overview 2

European Accounting Configuration 2

Database Server Installation 2

Overview

Before you install European Accounting, you must select the appropriate installation configuration and decide whether to install optional data.

European Accounting Configuration

You can install European Accounting in two configurations:

- Set up a test QAD Standard Edition database and European Accounting directory. QAD recommends this configuration for established QAD Standard Edition production environments.
- Use the European Accounting CD-ROM to directly update production databases and the QAD Standard Edition installation directory. In general, this configuration simply requires that you run the European Accounting installation routine and specify the QAD Standard Edition installation directory.

Which configuration to use will depend on whether European Accounting is being installed on an existing QAD Standard Edition implementation.

Database Server Installation

The data model for European Accounting release 2.0b for QAD Standard Edition is integrated within the QAD Standard Edition database. Hence, no separate database is required. You will need to update the QAD Standard Edition database with the data required to run European Accounting. The data on the European Accounting CD is split up into two sections; Mandatory and non-mandatory. The mandatory data is the data that must be loaded if European Accounting is to run as intended. This data includes the menu system changes, the additional field help as well as the browse and look-up data. The optional data will facilitate an implementation. This includes, for example, an alternative setup for country codes and currency codes. You must carefully consider whether or not to load this data.

Installing the Database Server Files

This chapter provides detailed information regarding database server files installation.

Overview 4

Database Server Installation Considerations 4

Pre-installation for UNIX Servers 4

Pre-installation for Windows Server 4

Installing the Server Files on UNIX 5

Installing the Server Files on Windows 5

Installing Language Files 6

Configuring Database Sets 7

Generating the Scripts 7

Overview

The following sections provide detailed information related to database server files installation.

Database Server Installation Considerations

There are a number of points concerning the database server installation. You should be familiar with the database server installation chapter of the QAD Standard Edition installation.

Pre-installation for UNIX Servers

QAD Standard Edition installations on UNIX require a group called `qad` and a user called `mfg` on the database server. All QAD Standard Edition installation and maintenance programs store pertinent information under the `mfg` user home directory. This enables QAD scripts to automatically and reliably find data about the installed products and lets you maintain your system without having to log on as root.

- 1 Create a group called `qad` with a group ID (gid) of 65535 with your UNIX system administration utility. (65535 is the user ID of the files on QAD Standard Edition media.)
- 2 Create a user called `mfg`, with a user ID of 65535.
- 3 Assign the Korn shell to this user. All of the scripts delivered on QAD media use Korn shell (`ksh`) syntax.
- 4 Set the user's `$HOME` environment to a user directory to which working and temporary files can be written.
- 5 Assign the standard `umask` of 022 to set permissions and security.
- 6 Update the `mfg` user profile to include the `PROPATH`, `DLC`, and `PATH` variables.

Pre-installation for Windows Server

If you are installing on a Windows server or GUI clients, you must make some temporary settings for the tools and DOS windows to work correctly:

- The graphical interface does not perform some functions, such as compiling, at high screen resolutions. Reset your screen resolution to 800 x 600 before starting the graphical MFG/UTIL.
- The character interface requires that you reset your DOS window layout. The symptoms of incorrect settings are deceptive: the screens do not refresh properly after tabbing through menu and button selections.

To correct this and set up the DOS window for MFG/UTIL complete the following steps:

- 1 Launch the character MFG/UTIL from the Start menu icon.
- 2 Right-click on the DOS window title bar and select Properties.
- 3 Select the Layout tab.

- 4 Set Screen Buffer Size Width to 80 and Height to 25 and select OK.
- 5 When you are prompted, select Modify Shortcut.
- 6 Restart MFG/UTIL to enable the change.

You should reset these to the defaults (Width 80, Height 300) after you have completed the GUI client installations to ensure adequate buffers for other applications.

Installing the Server Files on UNIX

Complete this section to install the QAD Standard Edition database server files on your UNIX server.

- 1 Log on as user `mfg` under the group `qad`.
- 2 On the CD, change to the directory containing the database server media:
`cd <cd-mounted-dir>/dbserv`
- 3 Change to the install directory:
`cd install`
- 4 Launch the database server installation script in that directory:
`./install.ksh`
- 5 A welcome screen displays. Press Enter.
- 6 Accept the QAD Standard Edition software license agreement.
- 7 Enter the installation log files location. Later installs (language files, host client, and others) look in this location for installation information. You may enter a different location, but you must remember and enter the location on subsequent installations.
- 8 Enter the Progress installation directory path or accept the default. The script verifies the location and version. Specify `yes` to confirm.
- 9 Enter the path and directory where you want to install the European Accounting database server files (*EuroAccInstallDir*). If this directory does not exist, it is created.
- 10 Review the summary and confirm by entering `y` and pressing Enter. The extract and copy of the server files begins.
- 11 Press Enter to end the installation script.

Installing the Server Files on Windows

- 1 Insert the QAD Standard Edition CD in the CD-ROM drive.
- 2 Run the `install.exe` program using Windows Explorer or the Start button:
CD-ROMDrive:\dbserv\install\install.exe
- 3 A welcome screen displays. Press Enter.

- 6 Installation Guide — European Accounting for Progress
- 4 Accept the QAD Standard Edition software license agreement.
- 5 Enter the installation log files location. Later installs (language files, host client, and others) look in this location for installation information. You may enter a different location, but you must remember and enter the location on subsequent installations.
- 6 Enter the Progress installation directory path or accept the default. The script verifies the location and version. Specify yes to confirm.
- 7 Enter the path and directory where you want to install the European Accounting database server files (*EuroAccInstallDir*). If this directory does not exist, it is created.
- 8 Review the summary and confirm by entering y and pressing Enter. The extraction and copying of the server files begins.
- 9 Press the Finish button to end the installation script.
- 10 Review the generated log file.

Installing Language Files

Use these steps to install the QAD Standard Edition language files, which include the language-specific menu and message data files. This is required even if you are only installing one language.

The files for each language that you purchased are installed by default in a *euroacc* subdirectory directly below the directory where you installed the European Accounting Database Server files (*EuroAccInstallDir*) during Installing the Server Files. The language subdirectories are identified by the two-letter QAD Standard Edition language code. For example, for US English the subdirectory is *euroacc/us*.

Installing the Languages Files on UNIX

- 1 Log on as user *mfg* under the group *qad*.
- 2 On the CD, change to the directory containing the language files:

```
cd <cd-mounted-dir>/lang-<language-dir>
```
- 3 Change to the install directory:

```
cd install
```
- 4 Launch the installation script in that directory:

```
./install.ksh
```
- 5 A welcome screen displays. Press Enter.
- 6 Accept the QAD Standard Edition software license agreement.
- 7 Enter the log file location you used while installing the database server files.
- 8 Enter the target directory for this language file installation. By default this is the directory where you installed the European Accounting Server files (*EuroAccInstallDir*).
- 9 Review the summary and confirm by entering y and pressing Enter.

10 Press Enter to finish this step and review the generated log file.

If you are installing multiple QAD Standard Edition languages, repeat steps 1 to 10 for each language.

Installing the Languages Files on Windows

- 1 Insert the QAD Standard Edition CD in the CD-ROM drive.
- 2 Run the `install.exe` program using Windows Explorer or the Start button:
`CD-ROMDrive:\<language-dir>\install\install.exe`
- 3 A welcome screen displays. Press Enter.
- 4 Accept the QAD Standard Edition software license agreement.
- 5 Enter the log file location you used while installing the database server files.
- 6 Enter the target directory for this language file installation. By default, this is the directory where you installed the European Accounting server files (*EuroAccInstallDir*).
- 7 Review the summary and confirm by entering y and pressing Enter.
- 8 Click Finish to end this step and review the generated log file.

If you are installing multiple QAD Standard Edition languages, repeat steps 1 to 8 for each language.

Configuring Database Sets

QAD Standard Edition is a multi-database application that requires a minimum of three databases connected concurrently to a single session. At a minimum, each QAD Standard Edition client session connects to a main QAD Standard Edition database, the help database, and the administration database. You can also connect to QAD bolt-on product, third party, and custom side databases in the same session.

While European Accounting is a QAD bolt-on product, it does not require a separate database (as for previous versions of the European Accounting product). The European Accounting data model is included within the standard QAD Standard Edition database. Hence, the database sets are set up and configured as for QAD Standard Edition. See the *QAD Standard Edition Installation Guide* for information on configuring the database sets.

If the installation is a test installation with the QAD Standard Edition and European Accounting client files kept separate, QAD recommends that you use a separate database set. The reason is that European Accounting needs to have extra data loaded into the database and some data replaced by new data. You must carefully consider when to upgrade a production database with the European Accounting data.

Generating the Scripts

You can generate start up scripts for European Accounting using the MFG/UTIL program. See the *QAD Standard Edition Installation Guide* for details about how to do this. However, you will need

8 Installation Guide — European Accounting for Progress

to ensure that the directories containing the European Accounting client files are added to the `PROPATH` before the scripts are created, See “Adding European Accounting Client File Directory to the `PROPATH`” on page 18.

Character Client Installation

This chapter describe how to perform a European Accounting character client installation.

Overview 10

Character Client Installation 10

Installing Character Client Files 10

Client Set Up 11

Overview

The following sections cover European Accounting character client installation.

Character Client Installation

The European Accounting character client is installed in a manner similar to the QAD Standard Edition client. You will need to decide where to install the client files. As noted previously, you can choose to install the client files in a directory separate from the QAD Standard Edition client files or choose the same directory and create a client file area that combines QAD Standard Edition and European Accounting. In general, if you are installing European Accounting on an existing implementation of QAD Standard Edition, QAD recommends that you use a separate directory.

Installing Character Client Files

Before configuring the database sets, which create both server and client scripts, install the character client files. This avoids the need to create the database set scripts twice: once for the server and once for the client.

Depending on your installation environment, you may be prompted to remove temporary installation files during installation. Enter Yes at these prompts.

Installing the Client Files on UNIX

- 1 Log on as user `mfg` under the group `qad`.
- 2 On the CD, change to the directory containing the character installation files:
`cd <cd-mounted-dir>/charclient`
- 3 Change to the install directory:
`cd install`
- 4 Launch the installation script in that directory:
`./install.ksh`
- 5 A welcome screen displays. Press Enter.
- 6 Accept the QAD Standard Edition software license agreement.
- 7 Enter the log file location used during installation of the database server files.
- 8 Enter the `MFGPPROInstallDir`. This usually is the location containing the `mfgutil` script.
- 9 Enter the destination for this client installation. By default the directory is `EuroAccInstallDir`.
- 10 Review the installation summary and enter `y` to install.
- 11 A `mfgutil.ini` error may occur if you are installing into a new test environment. You can safely ignore this error.

Installing the Client Files on Windows

- 1 Insert the QAD Standard Edition CD into the CD-ROM drive.
- 2 Run the `install.exe` program using Windows Explorer or the Start button:
`CD-ROMDrive:\charclient\install\install.exe`
- 3 A welcome screen displays. Press Enter.
- 4 Accept the QAD Standard Edition software license agreement.
- 5 Enter the log file location you used when installing the database server files.
- 6 Enter the *MFGPROInstallDir*. This is usually the location containing the `mfgutil` script.
- 7 Enter the destination for this client installation. By default the directory is *EuroAccInstallDir*.
- 8 Review the installation summary and enter `y` to install.
- 9 A `mfgutil.ini` error can occur if you are installing into a new test environment. You can safely ignore this error.

Client Set Up

If you are currently running a production environment and want to test European Accounting in a test environment, you can use the set up instructions to create a test environment.

If the test environment client files are not in the same directory as the test database server files, regenerate the client startup files with the correct `PROPATH`.

Windows Client Installation

This chapter describes European Accounting Windows client installation.

Overview 14

GUI Client Installation 14

Installing the Client Files on Windows 14

Client Set Up 14

Overview

The following sections describe how to perform a European Accounting Windows client installation.

GUI Client Installation

The European Accounting GUI client is installed in a manner similar to the QAD Standard Edition GUI client. You will need to decide where to install the client files. As noted previously, you can choose to install the client files in a directory separate from the QAD Standard Edition client files or choose the same directory and create a client file area that combines QAD Standard Edition and European Accounting. In general, if you are installing European Accounting on an existing implementation of QAD Standard Edition, QAD recommends that you use a separate directory.

Installing GUI Client Files

Before you configure the database sets, which create both server and client scripts, install the character client files. This avoids the need to create the database set scripts twice: once for the server and once for the client.

Depending on your installation environment, you may be prompted to remove temporary installation files during installation. Enter Yes at these prompts.

Installing the Client Files on Windows

- 1 Insert the QAD Standard Edition CD in the CD-ROM drive.
- 2 Run the `install.exe` program using Windows Explorer, or the Start button:
`CD-ROMDrive:\guiclient\install\install.exe`
- 3 A welcome screen displays. Press Enter.
- 4 Accept the QAD Standard Edition software license agreement.
- 5 Enter the log file location used when installing the database server files.
- 6 Enter the *EuroAccInstallDir* used during installation of the database server files.
- 7 Enter the destination for this client installation. By default the directory is *EuroAccInstallDir*.
- 8 Review the installation summary and enter y to install.
- 9 An error regarding `mfgutil.ini` may occur if you are installing into a new test. You can safely ignore this error.

Client Set Up

If you are currently running a production environment and want to test European Accounting in a test environment, you can use the setup instructions to create a test environment.

If the test environment client files are not in the same directory as the test database server files, regenerate the client startup files with the correct `PROPATH`.

Compiling European Accounting

This chapter covers the issues and tasks related to compiling European Accounting.

Overview 18

Compiling Application Code 18

Adding European Accounting Client File Directory to the PROPATH 18

Overview

The following sections describe the issues and tasks related to compiling European Accounting.

Compiling Application Code

European Accounting is compiled just like QAD Standard Edition. For exact details on the compilation process, refer to the installation guide for QAD Standard Edition. However, it is necessary to use the list of programs to compile from the European Accounting CD-ROM, rather than the QAD Standard Edition compile list. This file is called `utcompile.epm` and is located in the `euroaccounting` directory where the database server files were installed. Also, for multi-thread compiles, you must generate the separate compile list files using the Generate Compile Listing screen in the MFG/UTIL program. See the QAD Standard Edition Installation Guide for instructions.

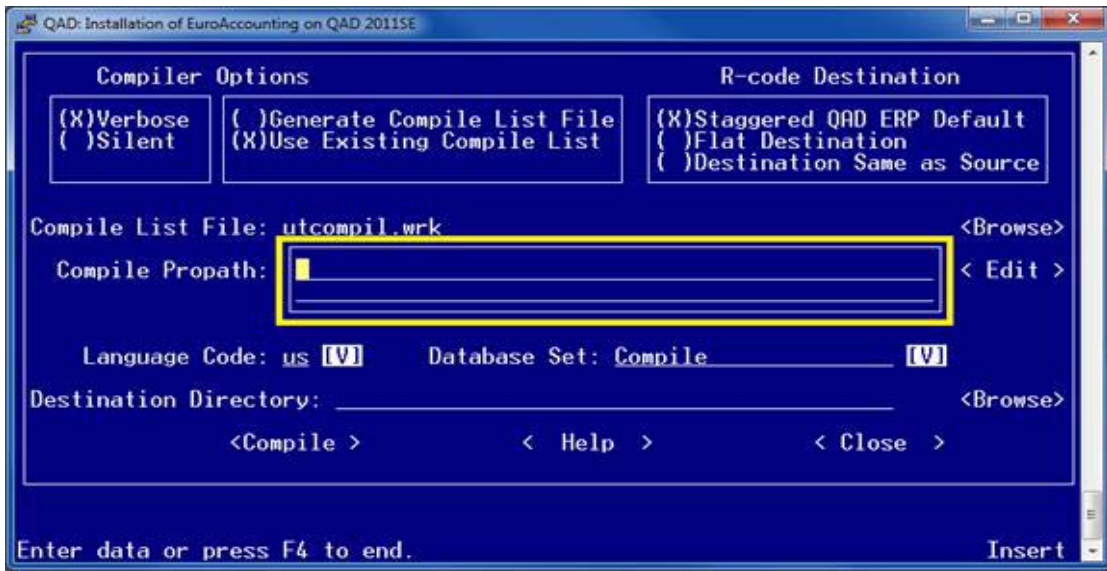
In any event, you can use the same database sets to compile European Accounting that were used to compile QAD Standard Edition. However, you must ensure that the European Accounting client files directory is added to the `PROPATH` for the compile. See “Adding European Accounting Client File Directory to the `PROPATH`” on page 18.

Adding European Accounting Client File Directory to the `PROPATH`

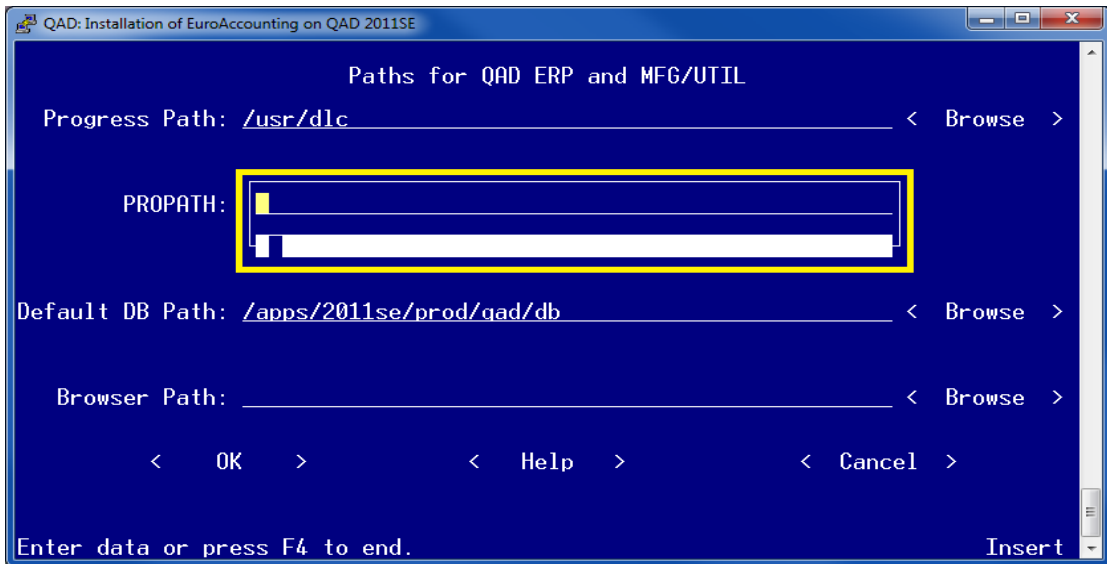
There are two places in the MFG/UTIL program where you must modify the `PROPATH`. They are:

- Programs|Compile Procedures. The `PROPATH` is used when the software is compiled.
- Configure|Set paths for QAD Standard Edition and MFG/UTIL. This menu sets the `PROPATH` to use when generating scripts that will allow you to run QAD Standard Edition with European Accounting against a particular database set.

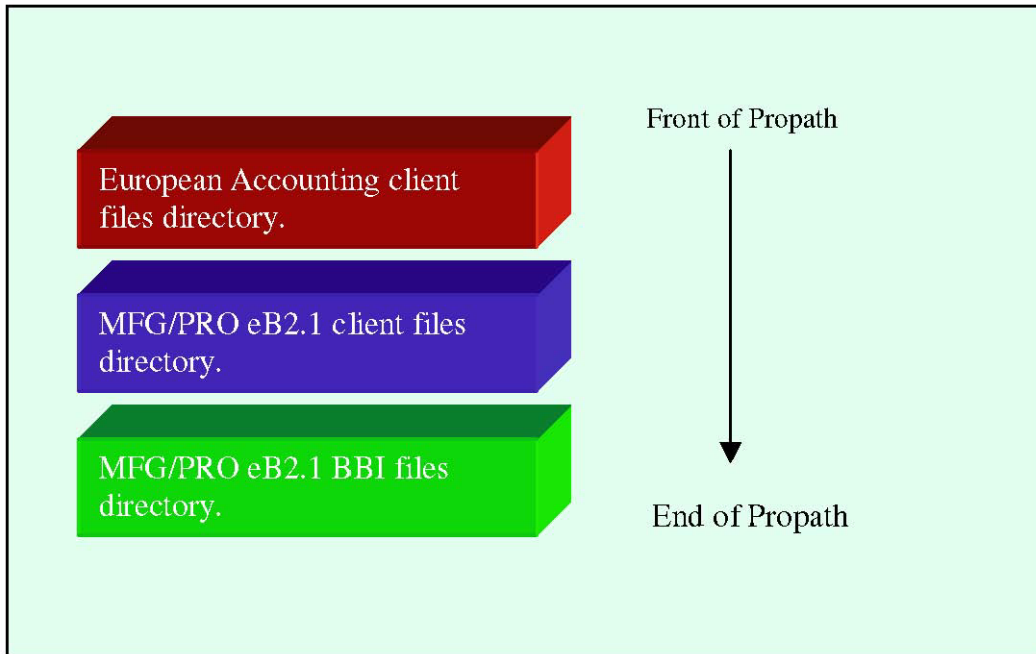
In the Compile Programs option, you will need to update the `PROPATH` as highlight below:



In the Set paths for QAD Standard Edition and MFG/UTIL option, the area is highlighted below:

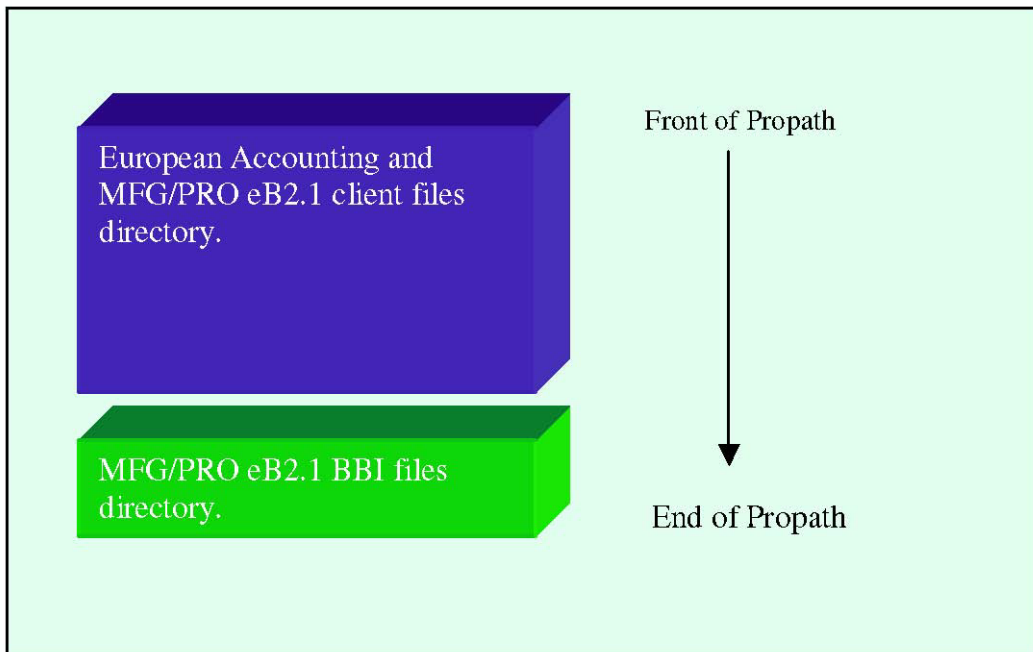


Depending on how you choose to install European Accounting, the PROPATH must be configured in one of two ways. If you decided to install the European Accounting client files in a separate layer than the QAD Standard Edition client files, configure the PROPATH as follows.



The European Accounting client files are located in front of the QAD Standard Edition client files in the `PROPATH`.

The second option is to combine the QAD Standard Edition and European Accounting client files in the same directory. In this case, you must set the `PROPATH` as you would for a normal QAD Standard Edition client compile.



Once the `PROPATH` is set correctly, use MFG/UTIL Compile Procedures function under the Programs menu to compile the EuroAccounting procedures.

Additional Set Up

This chapter describes how to set up European Accounting following installation.

Overview 24

Processing the Initial Data 24

Loading and Removing Data 24

Before You Proceed 25

Processing the Base Data 25

Processing Service Pack Data 27

Processing the Optional Data 27

Loading the Field Help 27

Creating a Multi-language System 28

Overview

The following sections describe the tasks that you perform to set up European Accounting following installation.

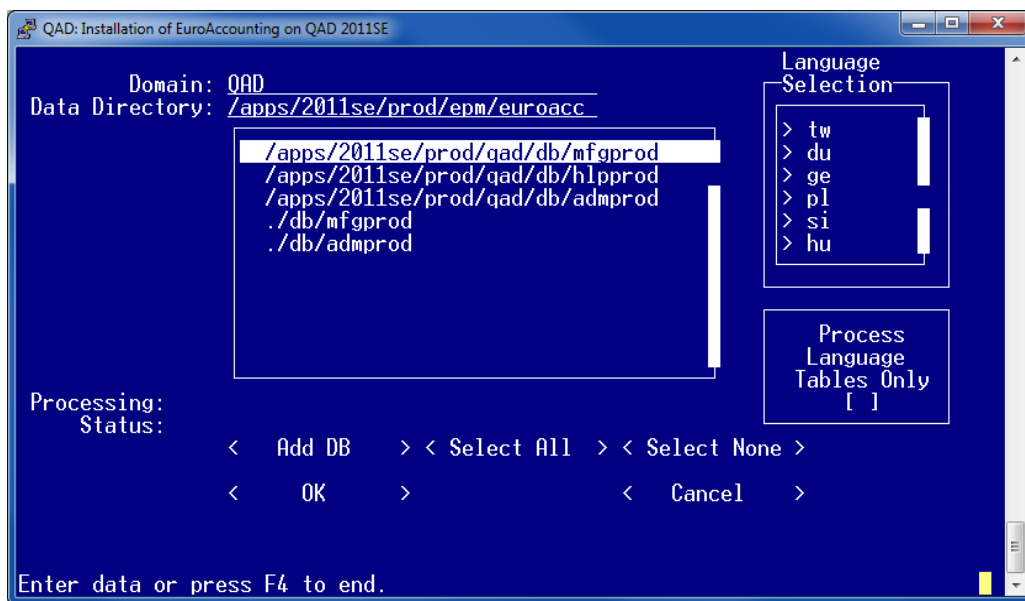
Processing the Initial Data

European Accounting requires that extra data be loaded into the QAD Standard Edition databases in the database sets. Also, some existing data is replaced with European Accounting data.

Loading and Removing Data

European Accounting requires the loading of data into the databases. Also, you must remove some QAD Standard Edition data for European Accounting to function correctly. To process the data for European Accounting in the databases, select Database – Service Pack Process|Process Service Pack Data in MFGUTIL.

The following screen displays.



The screen includes the following features:

Domain. The domain that holds the data to be processed for European Accounting. Typically, each data process session is run for all domains in the database.

Data Directory. The directory containing the service pack data or the European Accounting data. You can enter *EuroAccInstallDir/euroacc* for standard (language) data, *EuroAccInstallDir/euroacc/spdata* for service pack (language) data, and *EuroAccInstallDir/euroacc/optional* for optional data.

Language. This allows you to select or deselect the language to process. In order for the various languages to appear in this frame for standard and SP data loads, you should remove lang- from the name of the lang-*<LANGCODE>* subdirectories under euroacc and euroacc/spdata. This is necessary only for the languages that will actually be used. For example, rename:

```
../euroacc/spdata/lang-du to ../euroacc/spdata/du
```

Process Language Tables Only. This option is used for loading new language tables. If you previously installed the European Accounting data and want to add a new language to the system, this option ensures that only the language tables are loaded.

Database window. This lists the databases that can be processed. Use the cursor and space keys to select or deselect the databases to process. You can add new databases to the list using the Add DB option.

Before You Proceed

Before you proceed, you should know the type of installation and configuration you are performing. If you are performing a new European Accounting install, you need to process the base data, the service pack data, and the optional data (if required).

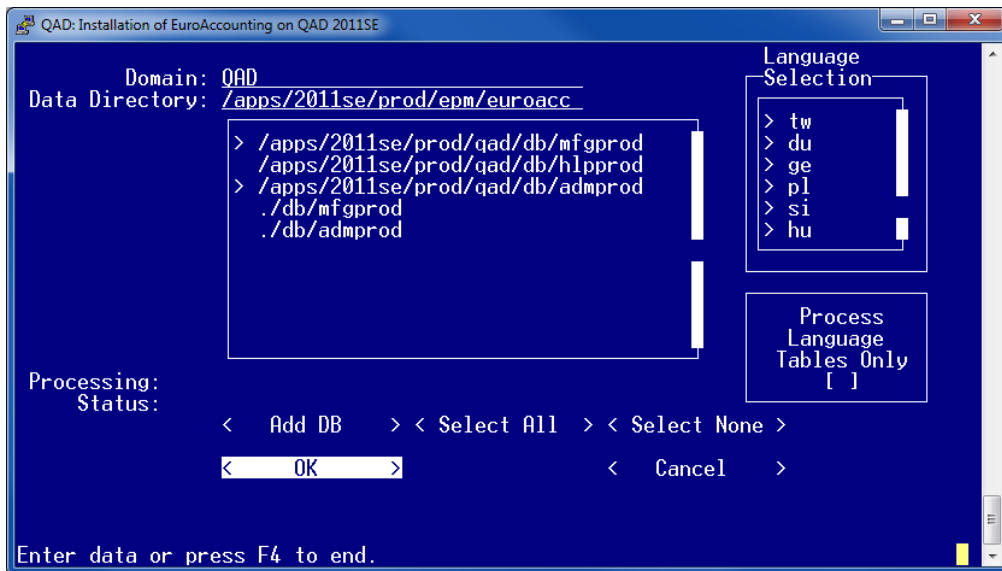
However, if you are updating an existing system with a new QAD Standard Edition service pack and European Accounting release, only the service pack data must be loaded.

Processing the Base Data

To load the base data, use the following steps:

- 1 Change the directory defined in the Data Directory fields to the directory where the European Accounting data was installed.
EuroAccInstallDir\euroacc
- 2 Select the languages to load. A number of language files are included on the European Accounting installation CD. However, the full language files for QAD Standard Edition are required to run European Accounting in a non-US English language mode. Select only the languages that were installed into the QAD Standard Edition database.
- 3 Verify that the Process Languages Tables Only box is not selected.
- 4 Select the databases that require European Accounting data. If the databases are not included in the list, add them to the list and ensure that the databases are selected by using the spacebar and arrow keys.

The only databases in a database set that will require processing are the main QAD Standard Edition and administration databases. The help database will not require processing.



- 5 Check the settings on the screen and verify that everything is correct. If so, press the GO key (F1 for character screens, F2 for Windows GUI) or select OK and press Enter.

This starts the deletion and loading of data. The program connects to each selected database in sequence. When the database is about to be connected, the standard Progress database connection screen appears.



The physical name and the logical name of the database are filled in. However, you must select any other connect options before proceeding. Once you confirm the database connect settings, the program proceeds to connect to the database.

Databases should be connected to in single-user mode. While it is possible to connect to the database in multi-user mode, it is not advisable to upgrade a database this way. For more information on multi-user database access, see the *Progress Database Administration Guide*.

Once the database connection is established, the processing program removes any data that is not required by European Accounting and loads new European Accounting data. The system may prompt to allow creation of a backup directory to store deleted data. This directory is necessary for

the process to proceed, so you should answer yes. Existing data in this folder will be overwritten. Any data that needs to be preserved should be renamed with a unique name or moved to a different folder.

Processing Service Pack Data

The steps above show how to load the European Accounting data required for the base release of the European Accounting product (release 2.0b). If a higher release is being installed, you must load additional data into the database. Do this by repeating the steps listed above, but using a different data directory.

```
EuroAccInstallDir\euroacc\spdata\
```

Note that the service pack data can consist of language-specific data as well as general system data. Service pack data may also remove data from the database.

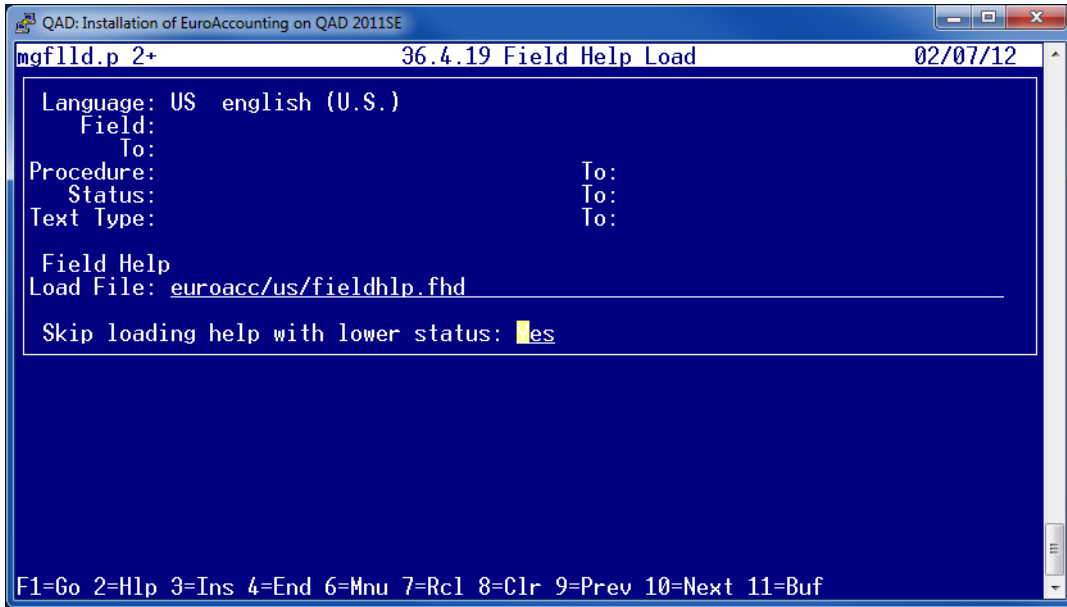
Processing the Optional Data

If you are executing a fresh installation, you can also load the optional European Accounting data. Repeat the load Service Pack data step, but specify different directories from which to load the data. The directories you specify depends on whether you are doing a new install, upgrading, or if you want the optional data.

```
EuroAccInstallDir/euroacc  
EuroAccInstallDir/euroacc/spdata  
EuroAccInstallDir/euroacc/optional
```

Loading the Field Help

The installed language directories contain a `fieldhlp.fhd` file that must be loaded into the database. You can do this from within QAD Standard Edition using the field help load program (menu option 36.4.19).



Creating a Multi-language System

The *QAD Standard Edition Installation Guide* covers the procedures for setting up a multi-language environment. For QAD Standard Edition, the correct language CD is required to install the menu, message, and label data into the database. European Accounting is supported in seven languages and the menu, message, and label data for these languages are included on the European Accounting installation CD.

QAD Standard Edition Installations

This chapter covers data set up for new European Accounting and QAD Standard Edition installations.

Overview 30

Setting Up GTM 30

Setting Up New GL Accounts 30

Control Files 31

Installation Utilities 33

Utility for Creating GL Periods 33

Utility for Assigning Daybook Data to Existing Data 34

Bank Account Validations of Addresses 35

Intrastat 35

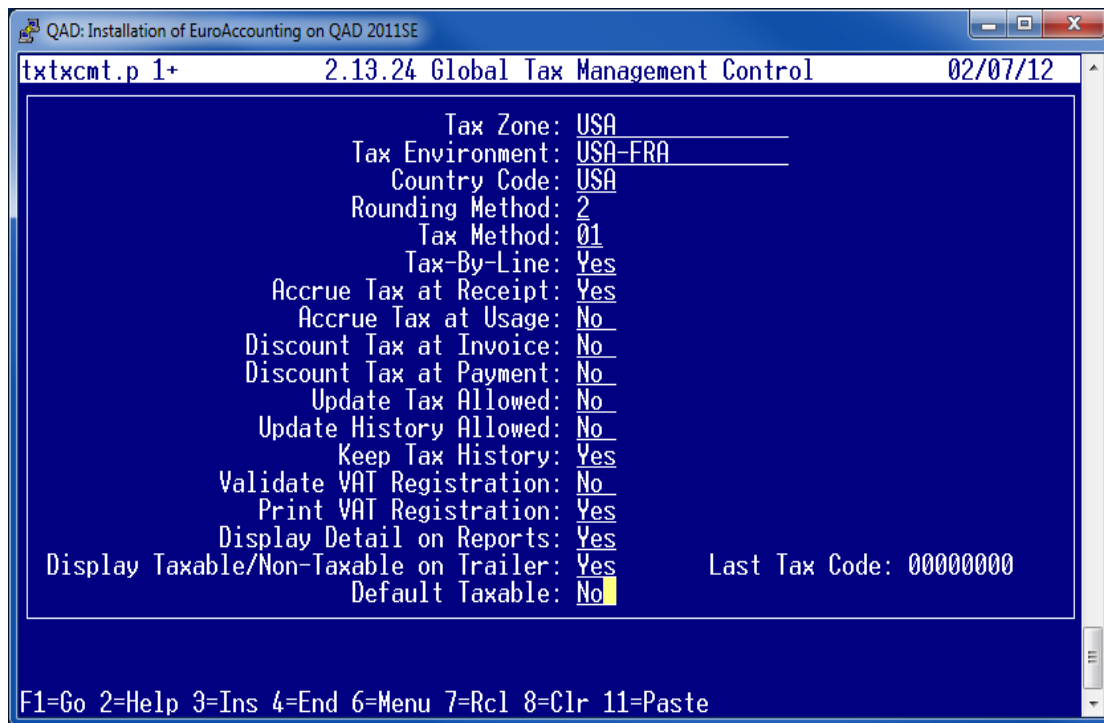
Payment Methods 35

Overview

The following sections describe data set up for new European Accounting and QAD Standard Edition installations.

Setting Up GTM

Set default and control values in Global Tax Management Control (2.13.24). Consult the standard QAD Standard Edition documentation for more details.



If necessary in case of an upgrade, perform a GTM conversion. (See the QAD Standard Edition Conversion Guide).

Complete the GTM setup, according to the implementation steps described in the standard QAD Standard Edition manuals. Verify the country table and mark countries that are part of the European Union. For tax rates, be aware of the Percentage recoverable field in (2.13.13.1) Tax Rate Maintenance. This percentage is set to 0% by default. You might want to set it to 100% for normal tax.

Setting Up New GL Accounts

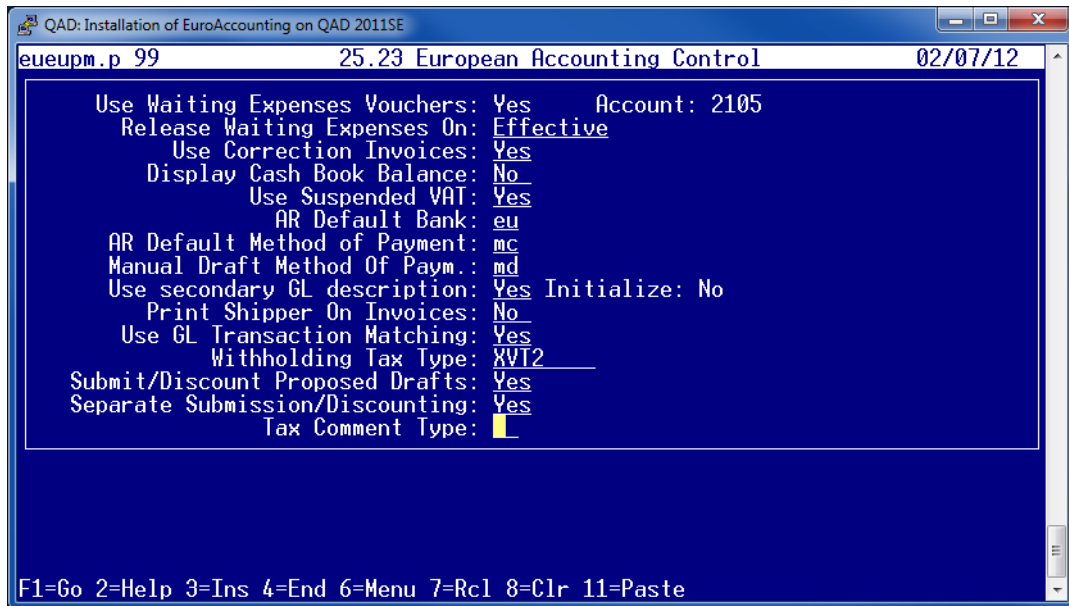
Define appropriate GL accounts for:

- Waiting Expenses Vouchers (25.23)
- Payment in Process for banks (26.13)
- Year End Closing Balance (25.24)

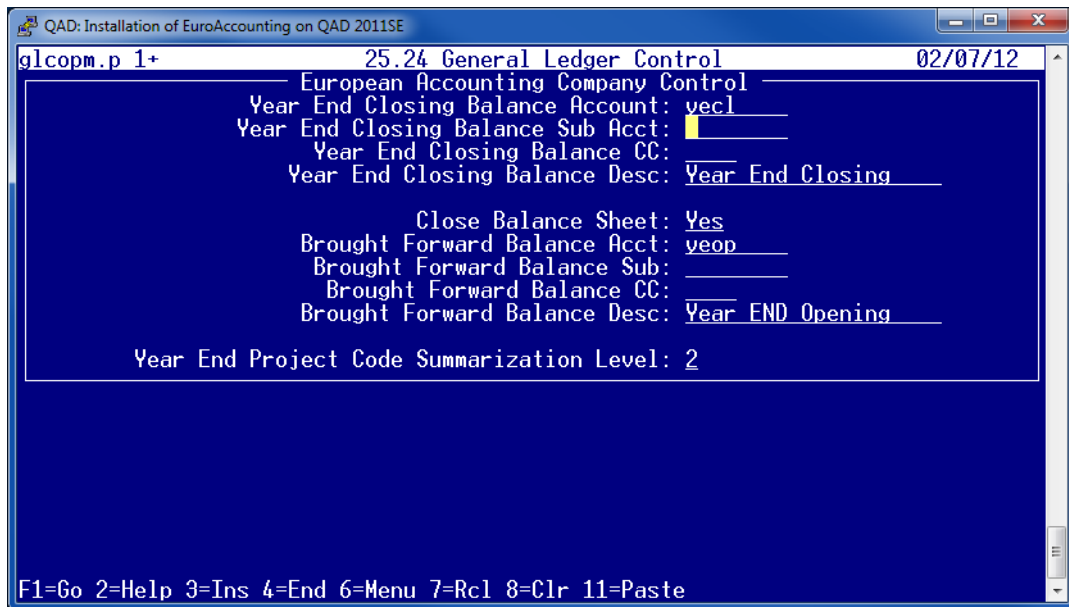
- Suspended VAT

Control Files

Activate European Accounting by setting European Accounting Control (25.23). You cannot enter some of the settings at this point (for example, default payment methods) because you must first define them in bank maintenance.



The General Ledger Control (25.24) screen displays.



In Accounts Payable Control (28.24), Accounts Receivable Control (27.24), and Inventory Control (3.24), set the Summarization level. See the QAD Standard Edition User Guide for the appropriate setting for this field. You must use a setting of 3 to use some of the functionality added by European Accounting (for example, GL Transaction Matching).

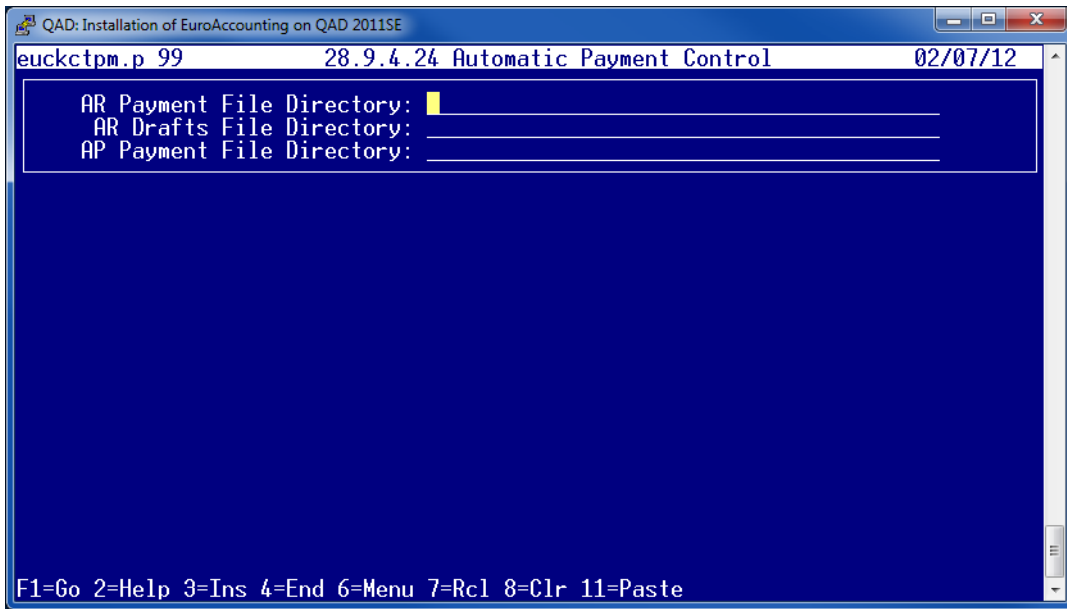
```

QAD: Installation of EuroAccounting on QAD 2011SE
appm.p 1+          28.24 Accounts Payable Control          02/07/12
Next Batch: 001
Next Voucher: 1001
Next Journal: 000004
Voucher Open Qty/Amt: No
AP Summarization Level: 1
Ship-To:
Default Bank: XX
Check Form: 1
Exchange Tolerance: 0.00%
Enter Vouchers Confirmed: Yes
Release Recur VOs Confirmed: No
Use Payment In Process Acct: No
Use Expensed Item Var Accts: Yes
External Voucher References Allowed: Yes
Use Assigned-To Field: Yes
Use Draft Management: No
Allow Modification to Supplier: Yes
ERS Packing Slip Error: No
ERS Update GL Avg Cost: No
ERS Voucher Date Option: 0
Multi-entity Payments: No

F1=Go 2=Help 3=Ins 4=End 6=Menu 7=Rcl 8=Clr 11=Paste

```

Use Automatic Payment Control File (28.9.4.24) to specify file locations, the company address (for reference in printed and electronic payment media), and defaults for the automatic payment functionality of both accounts payable and accounts receivable.

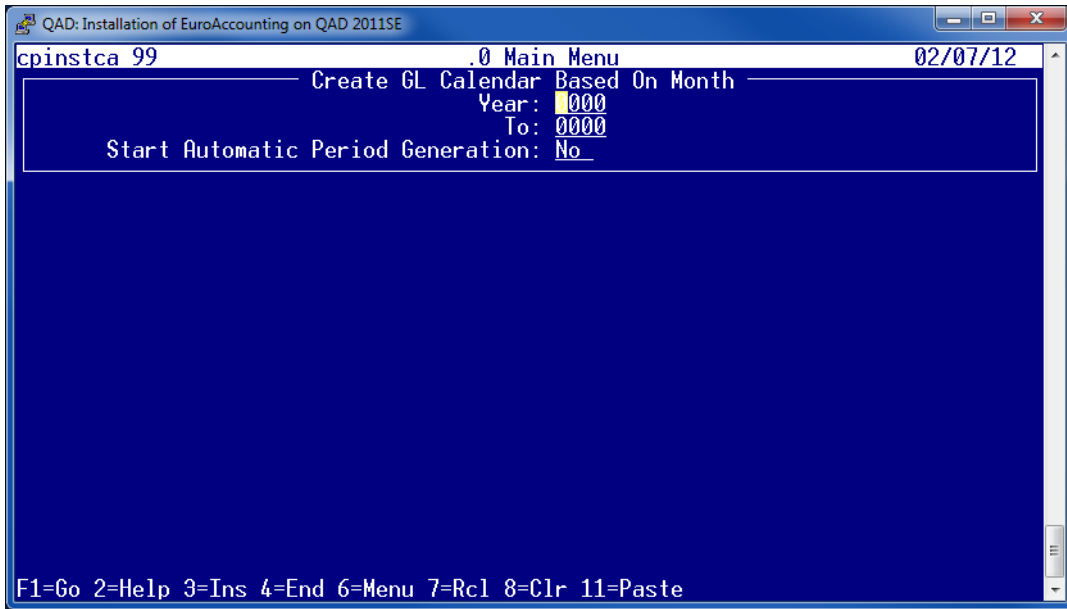


Installation Utilities

The following sections describe utilities that you can use to facilitate European Accounting installation and setup. To run a utility, enter the utility's name directly from the QAD Standard Edition main menu.

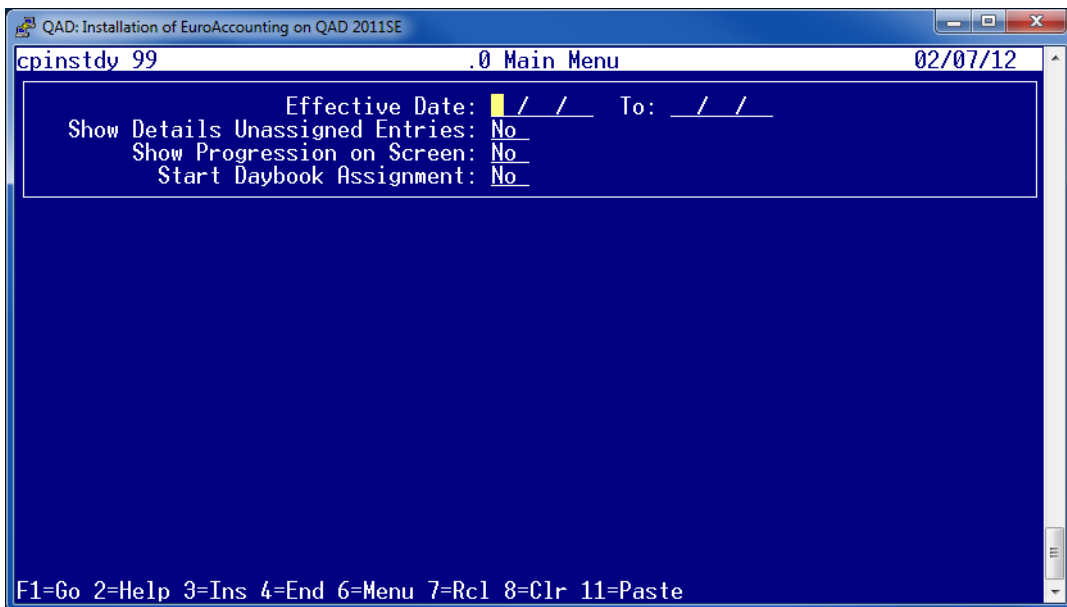
Utility for Creating GL Periods

In cases when GL periods are equal to calendar months, the `cpinstca.p` special utility allows these periods to be created automatically. This function is started from within QAD Standard Edition.



Utility for Assigning Daybook Data to Existing Data

When you upgrade from a previous release, your GL history will not have daybook code information assigned to it. Assign daybook codes to GL history with the utility `cpinstdy.p`. You start this function from within QAD Standard Edition.

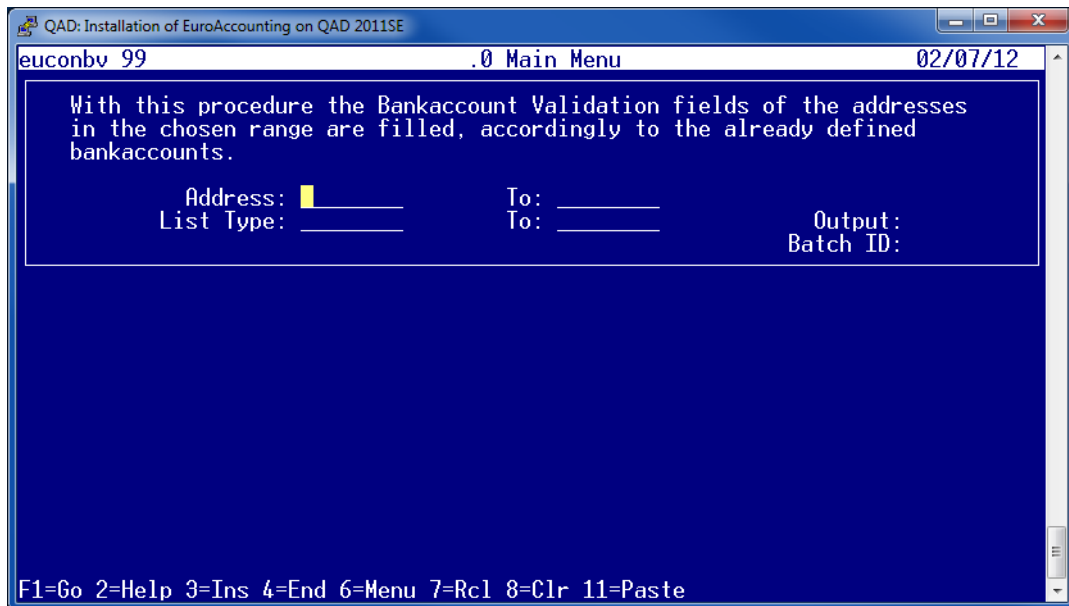


When the daybook assignment is started, a progress screen displays.

Bank Account Validations of Addresses

In European Accounting bank account validations are added. Currently the validations 11, 12, IT (Italian), GE (Germany), and SP (Spain) are available. These validations are used to check the account number and to verify if the bank accounts can be used for certain payment methods.

A special conversion program has the ability to check the bank account number and to assign the appropriate validation. Performing all available validations does this. If only one validation applies, this validation is assigned. If several validations apply, or if no validation applies, the address is listed on the exception report. To activate this conversion program, type `euconbv.p` at the QAD Standard Edition prompt in the menu.



Intrastat

To activate Intrastat, follow the instructions in the standard QAD Standard Edition documentation. Additionally, you must make changes to Intrastat Control and declare Declarants, Intrastat Transport data and Statistical Value factors. For more details, see Setup of Intrastat in the European Accounting User Guide.

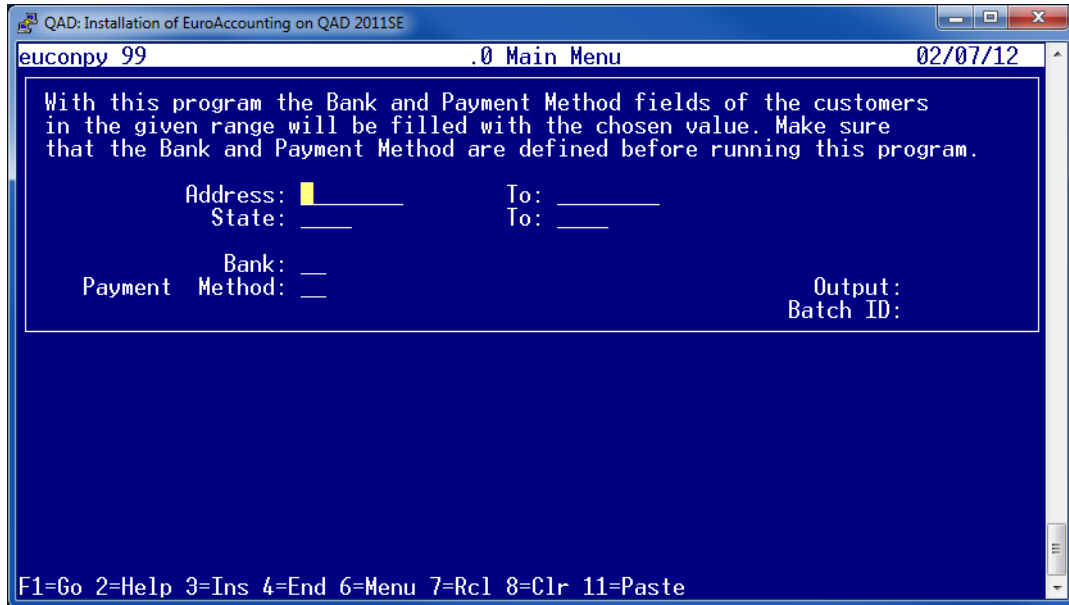
Payment Methods

European Accounting has features for automatic AR Payments selections. To use these features effectively, you should enter the bank and method of payment at the customer.

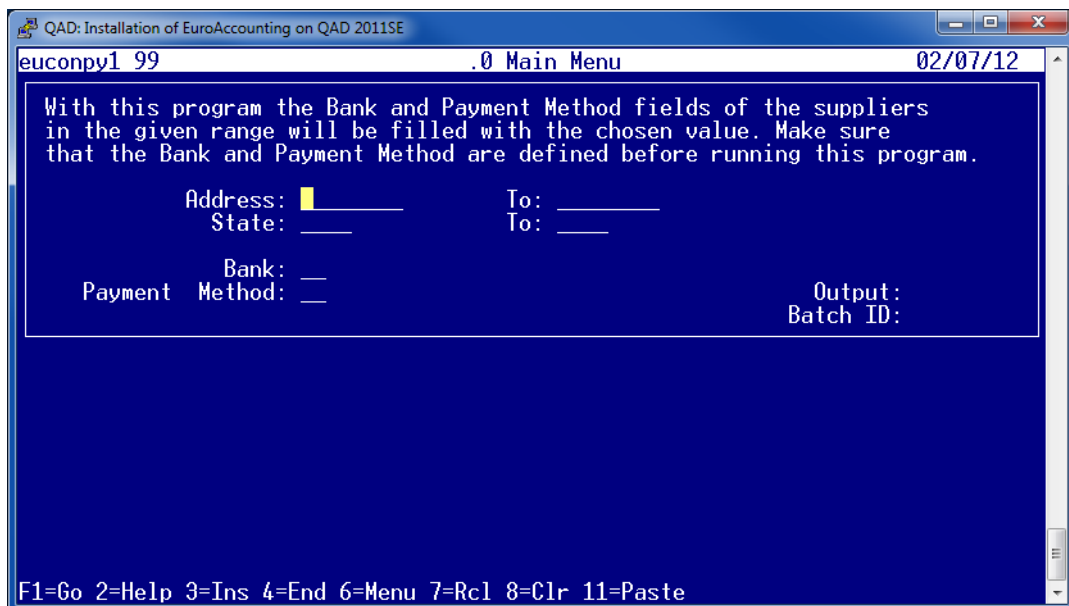
Define Banks and Payment Methods in Bank Maintenance (26.13)

To make the data entry less time consuming, two additional conversion programs are available. With these programs you can enter a range of customers or suppliers (selection on address code and country code) and have a bank and method of payment assigned to that range.

Use the `euconpy.p` utility to assign default banks and payment methods to customers.



Use the `euconpy1.p` utility to assign default banks and payment methods to suppliers.



Installation Over an Existing QAD Standard Edition Installation

This chapter covers the installation of European Accounting over an existing QAD Standard Edition implementation.

Overview 38

Convert Bank Accounts (eubkcnv.p) 38

Assigning Payment Methods to Open Vouchers (euckpcnv.p) 38

Assign Bank and Payment Method to Open AR Documents (euckrcnv.p) 40

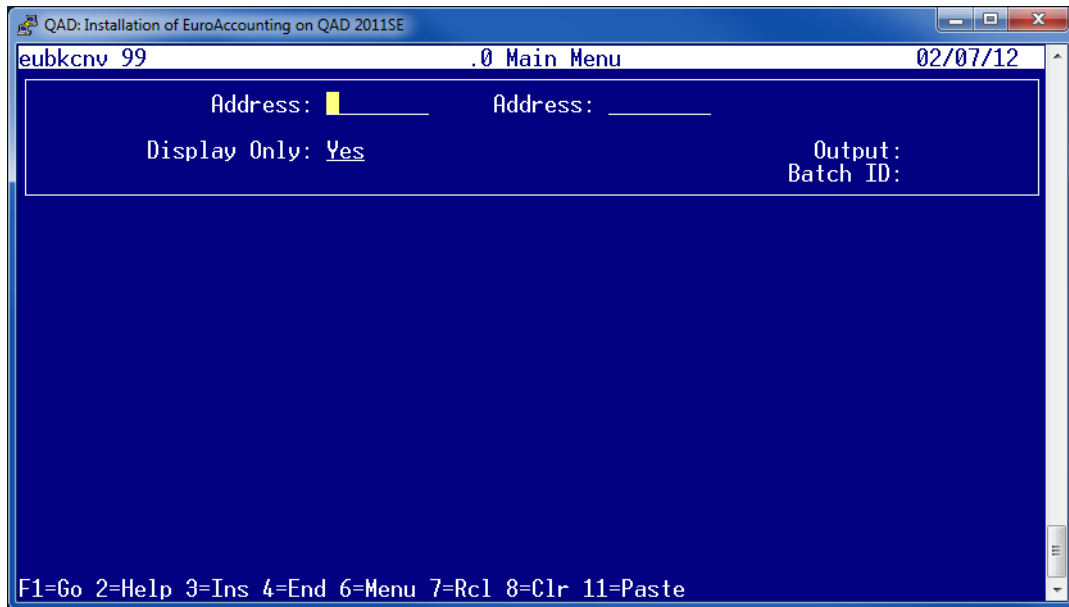
Overview

The following sections describe how to implement European Accounting over an existing QAD Standard Edition implementation.

Note The following steps assume that you have performed the data setup procedures for European Accounting (for example VAT to GTM conversions). See Chapter 7, “QAD Standard Edition Installations,” on page 29.

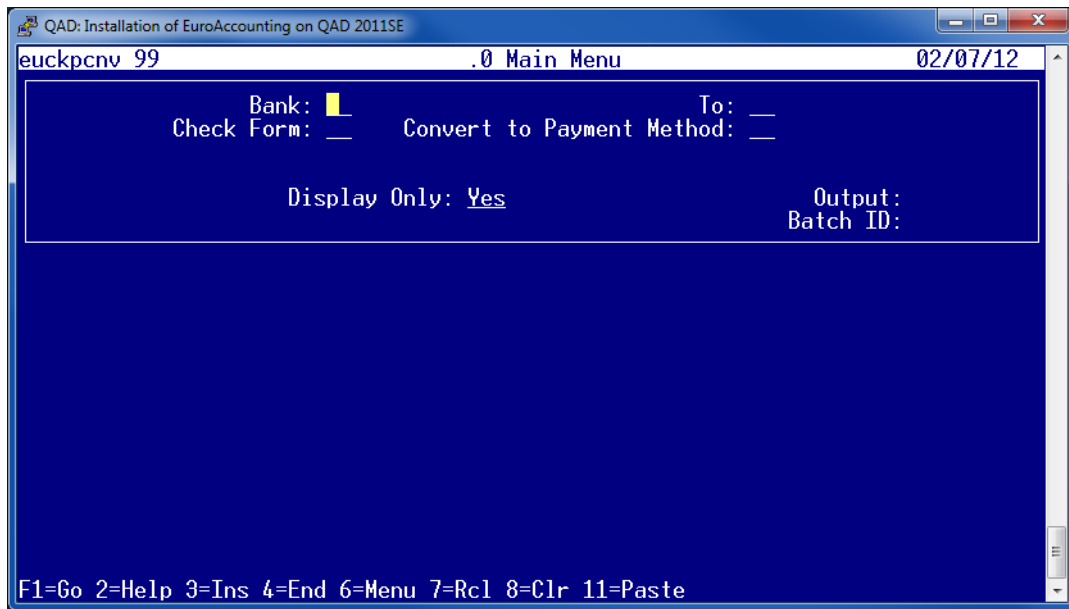
Convert Bank Accounts (eubkcnv.p)

This program will convert the bank account types for all addresses in the QAD Standard Edition system. Prior to using European Accounting, it was possible to set the types of these bank accounts to values such as EDI. In European Accounting, the type must be ALL. This is because European Accounting allows users to assign payment methods to banks, as set up in Bank Maintenance (26.13).



Assigning Payment Methods to Open Vouchers (euckpcnv.p)

This program will take all the open or partially paid vouchers on the system and assign a payment method to them.

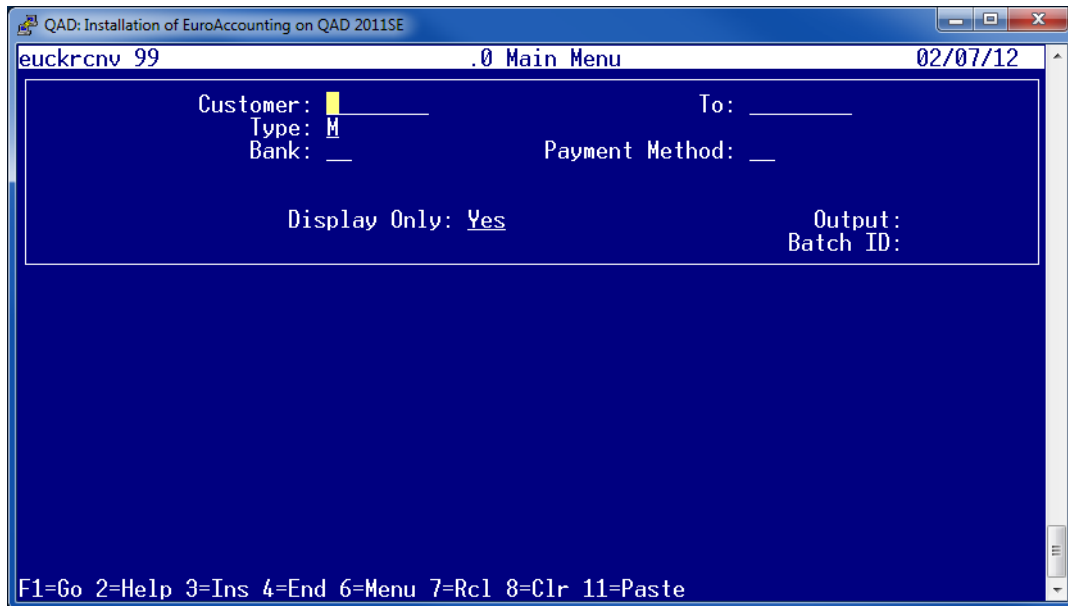


However, there are some important points to note about this:

- In QAD Standard Edition, you do not need to enter an external supplier reference (or supplier invoice number) when a voucher is created. In European Accounting, it is mandatory. This information is necessary for the payment method functionality to work. When you set up a payment method against a bank in Bank Maintenance, a bank format driver program is assigned to the payment method. It is this program, which actually generates the payment by printing a check or creating an electronic file (which is then sent to the bank). Usually, the supplier's invoice number must be included in these files. Otherwise the bank may reject the file and the payment will not be processed. The program `euckpcnv.p` will not refuse the assign payment methods to voucher, but you must be aware that it will be necessary to go into Voucher Maintenance program (menu option 28.1.1 in European Accounting) and assign the supplier's invoice number.
- If the voucher is to have a SWIFT payment method assigned to it, the program will not convert the voucher. You can only use the program as a report, which will indicate the vouchers you must manually edit in Voucher Maintenance. The reason is that you must assign extra data to a voucher record in order to create valid SWIFT payment files. Hence, you must use Voucher Maintenance to assign the appropriate payment method to the voucher and then continue to edit the voucher. You will then be prompted to enter the additional SWIFT data on the voucher.
- In order to process SWIFT payment in European Accounting, you need to go to Supplier SWIFT Data Maintenance (2.3.17) and enter SWIFT data for all suppliers who require payment using a SWIFT payment method.

Assign Bank and Payment Method to Open AR Documents (euckrcnv.p)

This will take all open invoices, memos and finance charges (including partially paid ones) and assign a bank and payment method to them. It will also take all open draft records and assign a payment method to them.



Once these steps are completed, you will be in a position to continue processing AP and AR payments and drafts. You should first familiarize yourself with payment processing by referring to the European Accounting User Guide. When it comes to processing drafts, keep the following points in mind:

- In QAD Standard Edition, drafts are treated as another type of receivable, against which, you can create a check or payment. In European Accounting, drafts are considered methods of payment in their own right.
- In QAD Standard Edition, you can create a payment against a draft if the draft was approved or discounted. In European Accounting, you can only create a payment against a draft that has been approved. Once a draft is discounted, you must process it using the draft bank reconciliation program (27.6.6.17, `eudmrcmt.p`) and close it using the draft-closing program (27.6.6.22, `eudmclos.p`).

However, if there are drafts in the system that were discounted before the implementation of European Accounting, it is still possible to create payments against them. These drafts will need to be converted using `euckrcnv.p`. Once the records are converted, you can pay them as in QAD Standard Edition by processing a manual check. Note that only the converted drafts can be processed this way. Drafts created after the implementation of European Accounting must be processed as directed in the European Accounting User Guide.

A report was created that allows you to track of these converted drafts and see whether or not they were paid. This program is `eudmcrp.p`. You can access it by entering the name of the program at the menu prompt.

Base Currency Conversion

This chapter describes European Accounting base currency conversion.

Overview 42

Base Currency Conversion 42

Conversion Steps 42

Changing Startup Scripts 42

Overview

The following text describes European Accounting base currency conversion.

Base Currency Conversion

MFG/PRO version eB2 includes functions that enable you to convert the base currency of your production database. While the data model is now included in the MFG/PRO database, European Accounting does contain programs to convert the data held in a number of the European Accounting tables. A new Base Currency Conversion procedure, `etbat19.p`, was added for this purpose. You must add this program to the `ba_conv` Base Currency Conversion script.

Conversion Steps

European Accounting does not change the steps for converting a database's the base currency. Follow the procedures in "Converting a Database to the Euro" in the Financial manual of QAD Standard Edition.

Changing Startup Scripts

European Accounting adds a new Base Currency Conversion procedure, `etbat19.p`, to support the conversion of data stored in tables added by European Accounting. The `ba_conv` script must be modified to be able to start this conversion. The following example shows what the `ba_conv` script could look like in UNIX for the Dutch language (du). The lines marked in bold were added to the `ba_conv` script.

```

DLC=/ext10/dlc8
DBDIR=ext1/production/mfg90/db
PATH=$PATH:$DLC;export PATH
PROTERMCAP=$DLC/protermcap;export PROTERMCAP
PROMSGS=$DLC/promsgs
MFG=/ext1/mfg90/qad
EA=/ext1/mfg90/ea51
DBNAME=$DBDIR/mfg.db;export DBNAME
PROPATH=$PROPATH:$EA:$EA/du:$EA/du/src:$MFG:$MFG/du:$MFG/du/src:$MFG/du/bbi
Language_code=du
Export PROPATH DLC MFG/PRO DBDIR language_code

#start batches
$DLC/bin/_progres $DBNAME -p language_code/etbatm.p -b &
$DLC/bin/_progres $DBNAME -p language_code/etbat03.p -b &
$DLC/bin/_progres $DBNAME -p language_code/etbat11.p -b &
$DLC/bin/_progres $DBNAME -p language_code/etbat08.p -b &
$DLC/bin/_progres $DBNAME -p language_code/etbat04.p -b &
$DLC/bin/_progres $DBNAME -p language_code/etbat05.p -b &
$DLC/bin/_progres $DBNAME -p language_code/etbat06.p -b &
$DLC/bin/_progres $DBNAME -p language_code/etbat07.p -b &
$DLC/bin/_progres $DBNAME -p language_code/etbat02.p -b &
$DLC/bin/_progres $DBNAME -p language_code/etbat09.p -b &
$DLC/bin/_progres $DBNAME -p language_code/etbat10.p -b &
$DLC/bin/_progres $DBNAME -p language_code/etbat01.p -b &
$DLC/bin/_progres $DBNAME -p language_code/etbat01.p -b &
$DLC/bin/_progres $DBNAME -p language_code/etbat12.p -b &
$DLC/bin/_progres $DBNAME -p language_code/etbat13.p -b &
$DLC/bin/_progres $DBNAME -p language_code/etbat14.p -b &
$DLC/bin/_progres $DBNAME -p language_code/etbat15.p -b &
$DLC/bin/_progres $DBNAME -p language_code/etbat16.p -b &
$DLC/bin/_progres $DBNAME -p language_code/etbat17.p -b &
$DLC/bin/_progres $DBNAME -p language_code/etbat18.p -b &
$DLC/bin/_progres $DBNAME -p language_code/etbat19.p -b &

```

