

Process Maps 1.0 Installation Instructions

September 2011

Overview 2

Warning 2

Prerequisites 2

Procedure 3

Verification 4

Troubleshooting 5

Overview

This document describes the steps to install QAD Process Maps 1.0 into a QAD Enterprise Edition 2011.1 environment. To perform the installation you will need to know the location of the QAD Deployment Toolkit (QDT) as well as the name of the target environment.

Note Please look in the Documentation Library on www.qad.com | Support under the 2011.1 EE Installation-Conversion section to see if a later version of this document is available.

Warning

Existing process maps on the server will be overwritten. If you have customized maps, create a backup copy before installing the new maps. The old color scheme is still maintained, so after the installation, you can simply copy your process maps back into the eB3 directory.

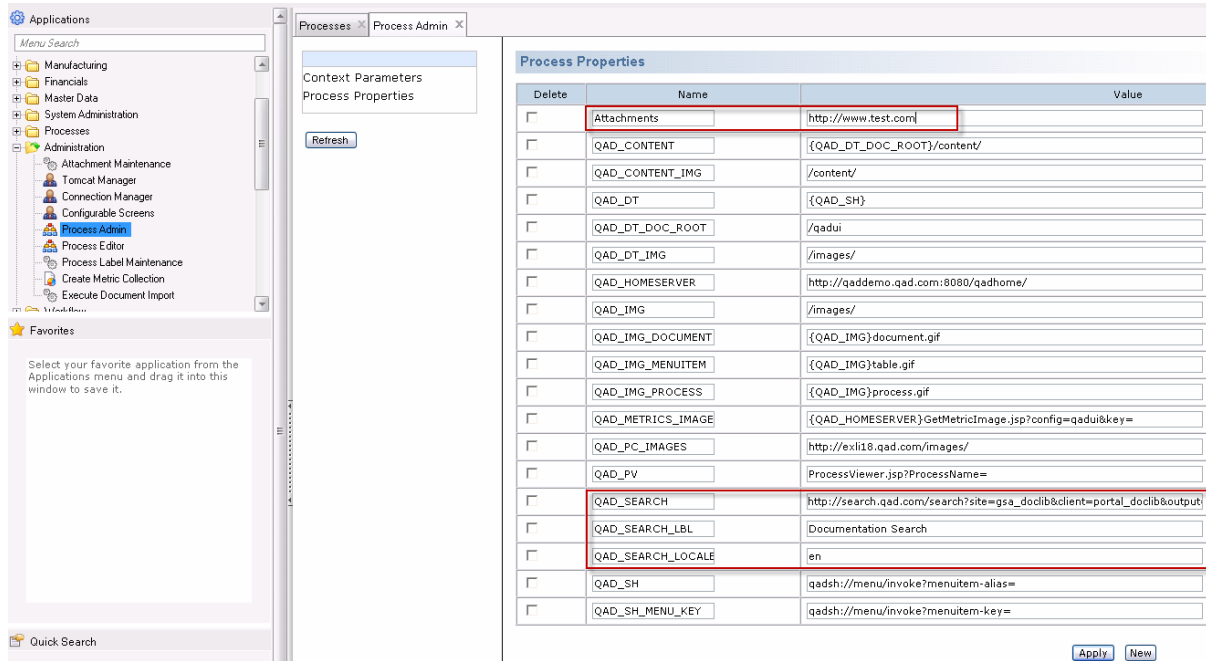
Prerequisites

Before installing the new maps, navigate to Administration | Process Admin, choose Process Properties in the main window, and make sure the following values exist:

Name	Value
Attachments	http://www.test.com (simple placeholder, can be replaced with any URL)
QAD_SEARCH	http://search.qad.com/search?site=gsa_doelib&client=portal_doelib&output=xml_no_dtd&proxystylesheet=portal_doelib&getfields=prod_module.prod_suite.book_type.book_title.drreference.channels.last_mod.dredbname&proxyreload=1&filter=p&access=p&q= (URL that takes the English node name and automatically conducts a search against QAD's Document Library)
QAD_SEARCH_LBL	Documentation Search (this is the label that shows up on the process map node, when the triangle is selected)
QAD_SEARCH_LOCALE	en (only English searches are supported at this time)

Important Click New to enter the values and Apply to save them. Once all the values are entered, click Refresh.

Fig. 1
Process Properties



Procedure

Note When the installation is performed on a UNIX system, the installation should be executed by the account that owns the process map files in the target environment. This will allow authorized users to edit the files using the .NET client. It is also possible to manually set the permissions in the target environment:

```
chmod ugo+rw [TOMCAT]/webapps/pronav/WEB-INF/pronav/xml/eB3/* .xml
chmod ugo+rw [TOMCAT]/webapps/pronav/WEB-INF/pronav/xml/eB2.1/* .xml
chmod ugo+rw [TOMCAT]/webapps/pronav/WEB-INF/pronav/properties/* .xml
```

- 1 Start a terminal session on the QAD Enterprise Edition 2011.1 server.
- 2 As a convenience assign the environment variable QDT to the location where QDT is installed.

```
export QDT=[absolute path to QDT]
```

For example:

```
export QDT=/usr/local/qdt
```

- 3 Run the installer, replacing the tokens as follows.

[ENVIRONMENT] The name of the target environment.

Note: To see a list of candidate names list the contents of the \$QDT/envs directory.

[INSTALLATION ZIP FILE] The absolute path to the ZIP file installation.

```
$QDT/pstage/netui-module-standard/install.sh
-Dconfig.src=$QDT
-Dconfig.env=[ENVIRONMENT]
-Dinstallation=[INSTALLATION ZIP FILE]
-i silent
```

Important The command should be entered on a single line, as shown in the example.

For example:

```
$QDT/pstage/netui-module-standard/install.sh -Dconfig.src=$QDT -Dconfig.env=live  
-Dinstallation=/dr01/tfb/installer.zip -i silent
```

- 4 Navigate to `..\tomcat\8080\webapps\qadui\WEB-INF\conf` and open the file `process-config.xml` in a text editor.
- 5 Search for `<Styles>`.
- 6 Add the following lines of code below `<Styles>` to enable the new color codes for new process maps:

```
<Style dashWidth="0" fillColor="url(#2011Node)" filter="url(#LightDropShadow)" fontFamily=  
"{DEFAULT_FONT_FAMILY}" fontSize="11" fontStyle="normal" fontWeight="normal" id="2011Node"  
opacity="1" strokeColor="#989898" strokeWidth="1" textColor="#222222"/>  
<Style dashWidth="0" fillColor="url(#2011Node2)" filter="url(#LightDropShadow)" fontFamily=  
"{DEFAULT_FONT_FAMILY}" fontSize="11" fontStyle="normal" fontWeight="normal" id="2011Node2"  
opacity="1" strokeColor="#989898" strokeWidth="1" textColor="#222222"/>  
<Style dashWidth="0" fillColor="url(#2011Plan)" filter="url(#LightDropShadow)" fontFamily=  
"{DEFAULT_FONT_FAMILY}" fontSize="11" fontStyle="normal" fontWeight="normal" id="2011Plan"  
opacity="1" strokeColor="#989898" strokeWidth="1" textColor="#222222"/>  
<Style dashWidth="0" fillColor="url(#2011Source)" filter="url(#LightDropShadow)" fontFamily=  
"{DEFAULT_FONT_FAMILY}" fontSize="11" fontStyle="normal" fontWeight="normal" id="2011Source"  
opacity="1" strokeColor="#989898" strokeWidth="1" textColor="#222222"/>  
<Style dashWidth="0" fillColor="url(#2011Make)" filter="url(#LightDropShadow)" fontFamily=  
"{DEFAULT_FONT_FAMILY}" fontSize="11" fontStyle="normal" fontWeight="normal" id="2011Make"  
opacity="1" strokeColor="#989898" strokeWidth="1" textColor="#222222"/>  
<Style dashWidth="0" fillColor="url(#2011Deliver)" filter="url(#LightDropShadow)" fontFamily=  
"{DEFAULT_FONT_FAMILY}" fontSize="11" fontStyle="normal" fontWeight="normal" id="2011Deliver"  
opacity="1" strokeColor="#989898" strokeWidth="1" textColor="#222222"/>  
<Style dashWidth="0" fillColor="url(#2011Warehouse)" filter="url(#LightDropShadow)"  
fontFamily="{DEFAULT_FONT_FAMILY}" fontSize="11" fontStyle="normal" fontWeight="normal" id=  
"2011Warehouse" opacity="1" strokeColor="#989898" strokeWidth="1" textColor="#222222"/>  
<Style dashWidth="0" fillColor="url(#2011Financial)" filter="url(#LightDropShadow)"  
fontFamily="{DEFAULT_FONT_FAMILY}" fontSize="11" fontStyle="normal" fontWeight="normal" id=  
"2011Financial" opacity="1" strokeColor="#989898" strokeWidth="1" textColor="#222222"/>  
<Style dashWidth="0" fillColor="url(#2011HR)" filter="url(#LightDropShadow)" fontFamily=  
"{DEFAULT_FONT_FAMILY}" fontSize="11" fontStyle="normal" fontWeight="normal" id="2011HR"  
opacity="1" strokeColor="#989898" strokeWidth="1" textColor="#222222"/>  
<Style dashWidth="0" fillColor="url(#2011Setup)" filter="url(#LightDropShadow)" fontFamily=  
"{DEFAULT_FONT_FAMILY}" fontSize="11" fontStyle="normal" fontWeight="normal" id="2011Setup"  
opacity="1" strokeColor="#989898" strokeWidth="1" textColor="#222222"/>  
<Style dashWidth="0" fillColor="url(#2011Design)" filter="url(#LightDropShadow)" fontFamily=  
"{DEFAULT_FONT_FAMILY}" fontSize="11" fontStyle="normal" fontWeight="normal" id="2011Design"  
opacity="1" strokeColor="#989898" strokeWidth="1" textColor="#222222"/>  
<Style dashWidth="0" fillColor="url(#2011Engage)" filter="url(#LightDropShadow)" fontFamily=  
"{DEFAULT_FONT_FAMILY}" fontSize="11" fontStyle="normal" fontWeight="normal" id="2011Engage"  
opacity="1" strokeColor="#989898" strokeWidth="1" textColor="#222222"/>  
<Style dashWidth="0" fillColor="url(#2011Service)" filter="url(#LightDropShadow)" fontFamily=  
"{DEFAULT_FONT_FAMILY}" fontSize="11" fontStyle="normal" fontWeight="normal" id="2011Service"  
opacity="1" strokeColor="#989898" strokeWidth="1" textColor="#222222"/>  
<Style dashWidth="0" fillColor="url(#2011Enable)" filter="url(#LightDropShadow)" fontFamily=  
"{DEFAULT_FONT_FAMILY}" fontSize="11" fontStyle="normal" fontWeight="normal" id="2011Enable"  
opacity="1" strokeColor="#989898" strokeWidth="1" textColor="#222222"/>
```

- 7 Save the file.
- 8 Launch the 2011.1 EE application, navigate to Administration | Process Admin, and click Refresh.

Verification

- 1 Be sure that you are running the updated 2011.1 EE client.
- 2 Verify that the landing page shows process maps with vertical maps, end-to-end maps, and supply chain maps.

Note You may need to press F5 to refresh the window.

Fig. 2
Old Landing Page

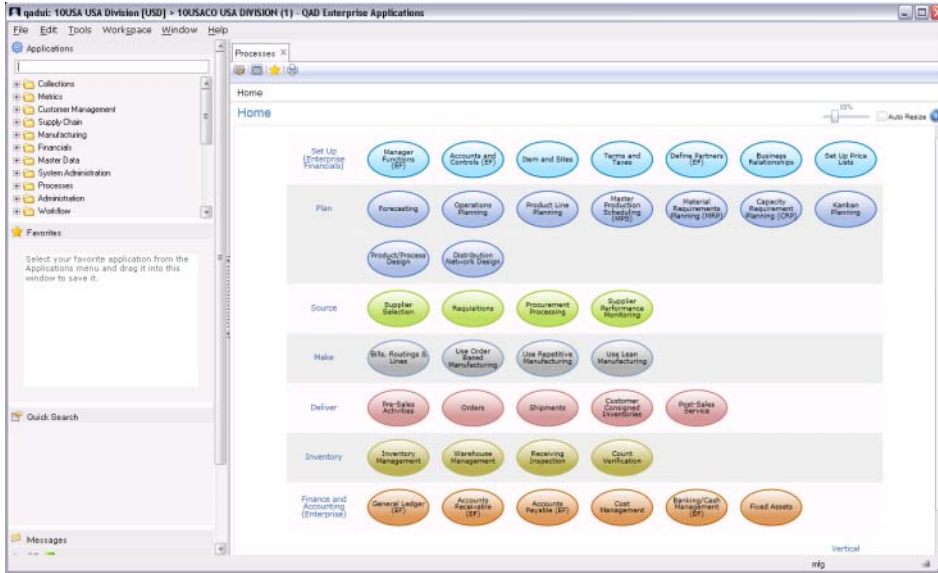
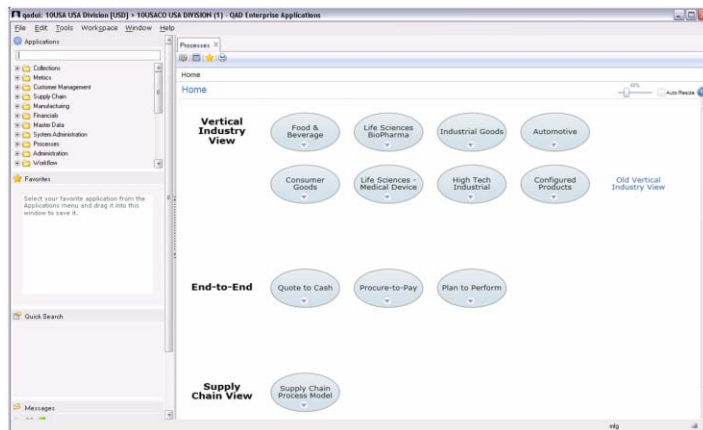


Fig. 3
New Landing Page



Troubleshooting

If an XAML Parse Error displays, verify that the values `Attachments` and `QAD_SEARCH` have been specified as described in “Prerequisites” on page 2.

Installation errors are captured in a log file:

```
[OS temp directory]/installation.[user].log
```

The logging threshold can be adjusted to capture additional information to diagnose the problem, by setting the `loglevel` argument when the installer is run.

```
-Dloglevel=[error, warn, info, debug, trace]
```

For example:

```
-Dloglevel=debug
```

If the installation fails without writing to the log file, an error has occurred while setting up the environment to run the installer. These kinds of boot issues can be diagnosed in the following manner:

- Windows: Hold down the <CTRL> key immediately after launching the installer until a console window appears.
- UNIX: Set the following environment variable before running the installer:

```
export LAX_DEBUG=true
```