



Patch Deployment: QAD Enterprise Applications 2011 Enterprise Edition

August 2, 2011

Contents

Overview 2

Back Up the Existing System 2

Install Patch 2

Import Reports 5

Overview

This document provides the steps required to deploy a QAD Enterprise Edition patch into a customer environment. The steps are valid for QAD 2011 EE only.

Back Up the Existing System

Back up the following folders, files, and databases for all environments you plan to update:

- `<QAD EE Install Directory>/qra`
- `<QAD EE Install Directory>/fin`
- `<QAD EE Install Directory>/xrc/proxy`
- `<QAD EE Install Directory>/qadui`
- `<QDT Install Directory>/xml`
- Progress backup of all production databases
- `<Tomcat Install Directory>/webapps/qadhome`

Previously installed hot fixes can interfere with the installation of this patch. Ensure the following folders are backed up and the contents are deleted:

- `<QAD EE Install Directory>/fin/patch`
- `<QAD EE Install Directory>/fin/proxypatch`

Factory Defaults

The QAD Enterprise Edition patch will overwrite any changes you have made to the factory defaults. If you want to keep your changes, you must back them up.

To save your current storage search and report variant settings, run the Stored Search Export Initial Settings and Report Variant Export Initial Settings programs from the .NET UI.

These programs generate two files, `factorydefaults.xml` and `reportvariantfactorydefaults.xml`, and save them in `<QAD EE Install Directory>/fin`. Back up these files by saving them in a different location.

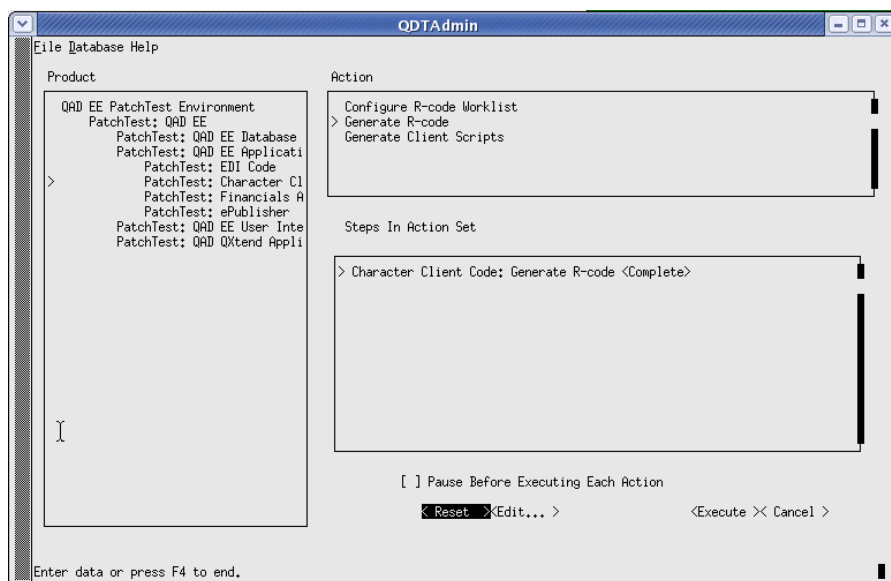
Install Patch

- 1 Shut down all QAD EE databases and servers:
 - a Stop Tomcat by using the appropriate script in `<Tomcat Install Directory>/bin`.
 - b Stop any add-ons that are integrated into your QAD EE environment.

- c Stop all QAD EE servers and databases by using the stopenv script located in `<QDT Install Directory>/envs/<Environment Names>/scripts`.
- 2 Download and extract the patch bundle (zip file) to the system being patched (`qad2011ee_patch<patch number>.zip`). The files are extracted into a subdirectory named `patch<technical version number>`.
- 3 From the `patch<technical version number>/install` directory, run `instpatch.ksh` for UNIX-type operating systems or `instpatch.exe` for Windows.
- 4 Read and accept the license agreement.
- 5 Enter the following locations for the patch installer to apply the patch to your system:
 - `<QAD EE Install Directory>`, the location for log files from this patch installation
 - `<Progress Install Directory>`
 - `<Tomcat Install Directory>`

If you use the same location for log files when you install subsequent patches, the last two locations will populate automatically.
- 6 A summary of the entered values displays. Verify that all of the information is correct and press `<Enter>` or type `y` to continue with the install.
- 7 The files are copied to the specified locations and a summary of the installation actions displays on the screen. Review the log files that were written to the directory specified in step 5 to ensure that there were no errors.
- 8 If you have multiple instances of QAD EE installed with a single QDT, repeat steps 3 through 7 for each instance. Since they all use the same `qadhome WebApp` in Tomcat, they must all be patched together. Once this is complete, start QDT and launch QDT/Admin by clicking the Admin button.
- 9 Navigate to the Character Client | Generate R-code actions set and select Reset. This enables QDT/Admin to recompile programs. Select yes when prompted and close the output screen to continue.

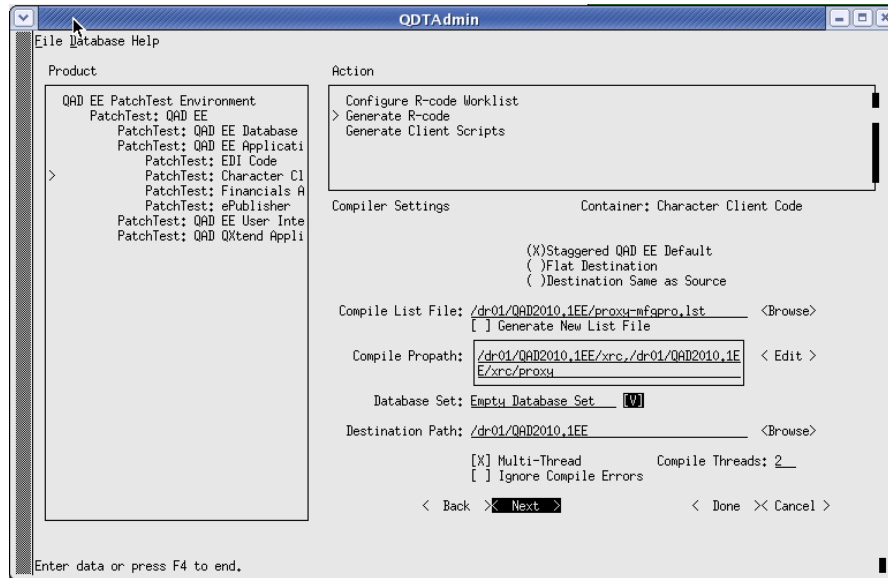
Fig. 1
Enabling QDT/Admin to Recompile Programs



- 10 After you run the reset action, select Edit.

- 11 In the Compile List File field, enter the name of the compile list that the installer extracted. You can find this file in `<QAD EE Install Dir>/proxy-mfgpro.lst`. Select Done when finished.
- 12 Once you modify the Character Client | Generate R-code actions set with the new compile list, select Execute to start the compile.
- 13 Select Yes when prompted, and choose whether to clear the log to continue.

Fig. 2 Preparing to Compile



- 14 When the compile finishes, check the log files for errors as indicated in the QDT/Admin log window. One log file is created for each compile thread specified; the files are named `XXbatchCompile.log`; they are located in `<QDT Install Directory>/logs` by default.
- 15 Select Close to continue.
- 16 If you have multiple instances of QAD Enterprise Edition built with this instance of QDT, repeat steps 9 through 15 for each instance. Then exit from QDT/Admin and QDT. This concludes the server portion of the patch install.
- 17 If you backed up your factory default settings, you must stop the application servers before you attempt to restore them. If you did not back up your factory default settings, go to step 19.
- 18 If you backed up your factory default settings, restore them by placing the `factorydefaults.xml` and `reportvariantfactorydefaults.xml` into `<QAD EE Install Directory>/fin`. Note that by doing so, you will lose the latest factory default settings in the QAD patch.
- 19 Start up all QAD Enterprise Edition databases and servers:
 - a Run the `startenv` script(s) located in `<QDT Install Directory>/envs/<Environment Name(s)>/scripts`.
 - b Start up other add-ons as needed.
 - c Start Tomcat using the appropriate script in `<Tomcat Install Directory>/bin`.
- 20 Once the QAD Enterprise Edition environment starts, run System Synchronize to ensure all components are updated. You can do this through QDT or the .NET UI as a user with administrative privileges.

- 21 Upon launching the .NET UI client, you are prompted to update any plug-ins that have changed. Accept all prompts.

Import Reports

After the patch has been installed, you must import updated reports. This process has two parts:

- Creating a rptAdmin role
- Importing the reports

To enable a user to run the Report Resource Import Menu item, you must assign that user the rptAdmin role.

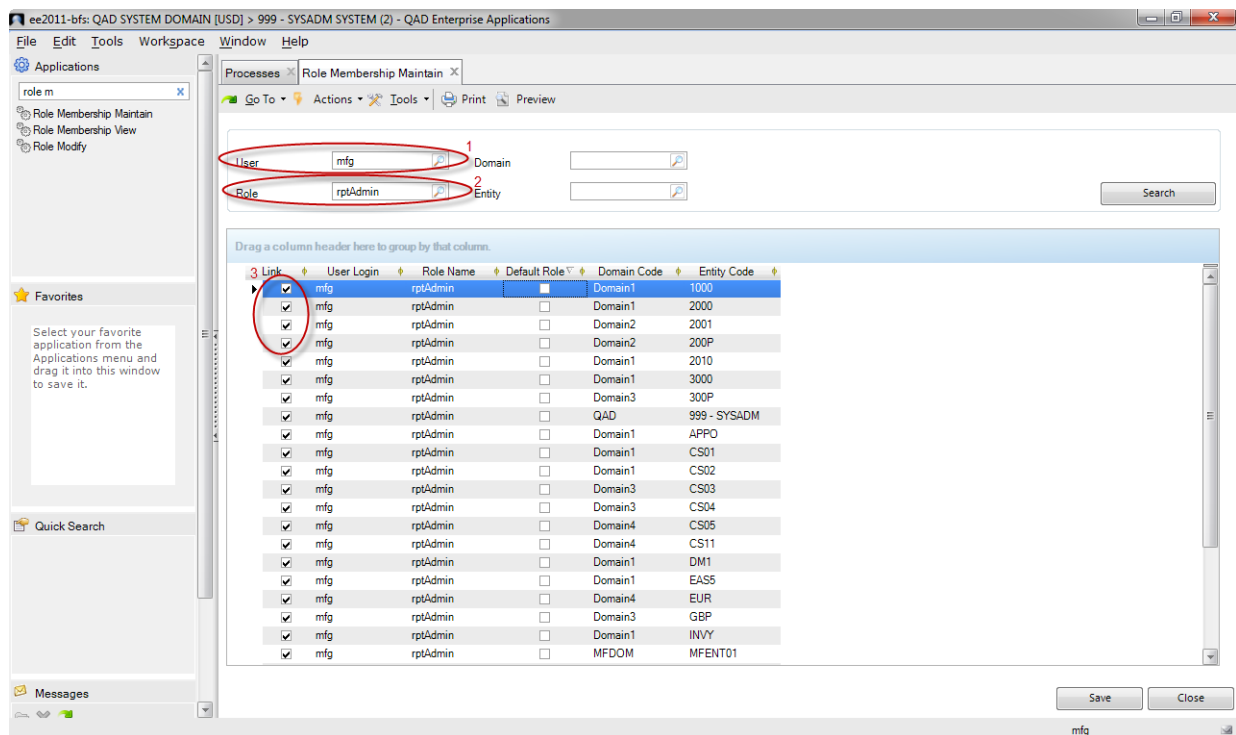
Creating a rptAdmin Role

If you have previously assigned the rptAdmin role to a user for a certain domain and entity, you may use that user to import the report resources that are included with the patch. If such a user exists, skip ahead to the next section.

To import the reports, do the following:

- 1 Log in to QAD EE 2011 using the .NET UI interface.
- 2 Open Role Membership Maintenance.

Fig. 3
Role Membership Maintenance



- 3 Enter the user login in the User field (Figure 3, item 1).
- 4 Enter rptAdmin in the Role field (Figure 3, item 2).
- 5 Click Search.

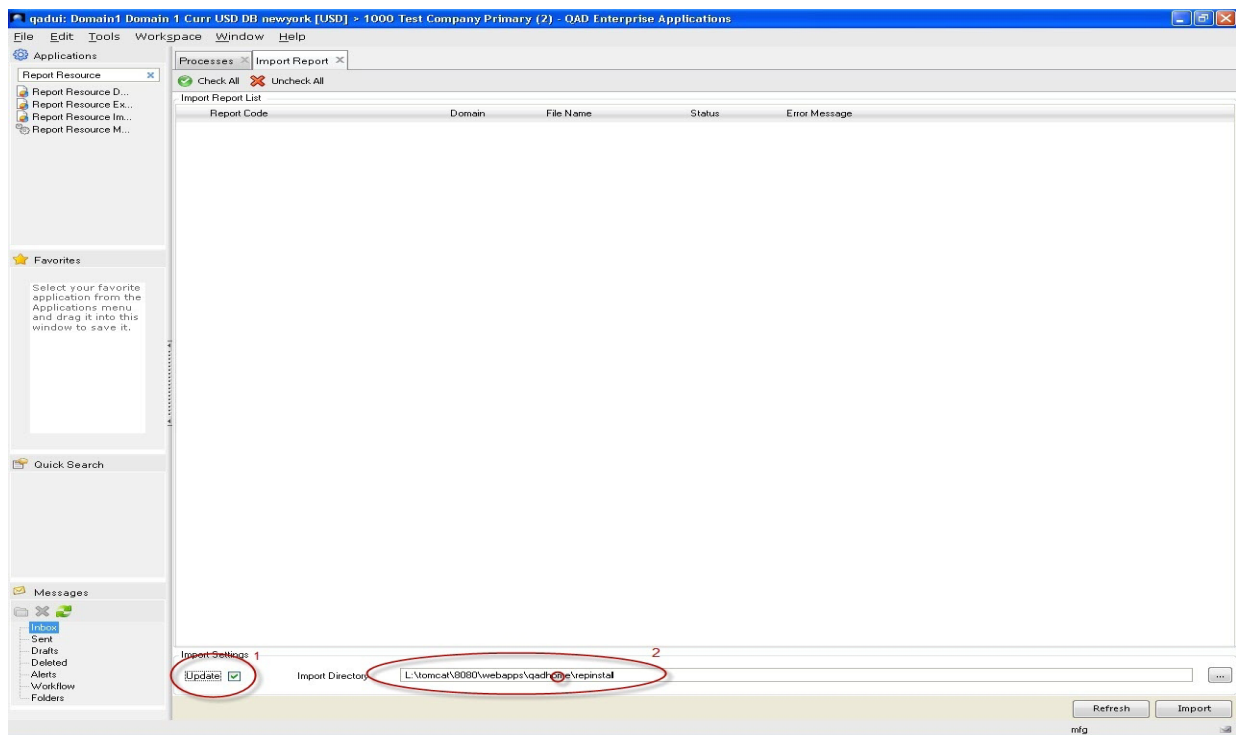
- 6 Select the Link check box for each user, domain, and entity combination that may need to run the operation. Usually, only one is necessary. The operation is universal and need only be done once by one user (Figure 3, item 3).
- 7 Click Save, then click Close.
- 8 Log out of the .NET UI and log in again to make the role changes take effect.

Importing the Reports

To import the reports, follow these steps:

- 1 Log in to QAD EE 2011 as the rptAdmin user using the .NET UI interface.
- 2 Open the Report Resource Import menu item.

Fig. 4
Import Report

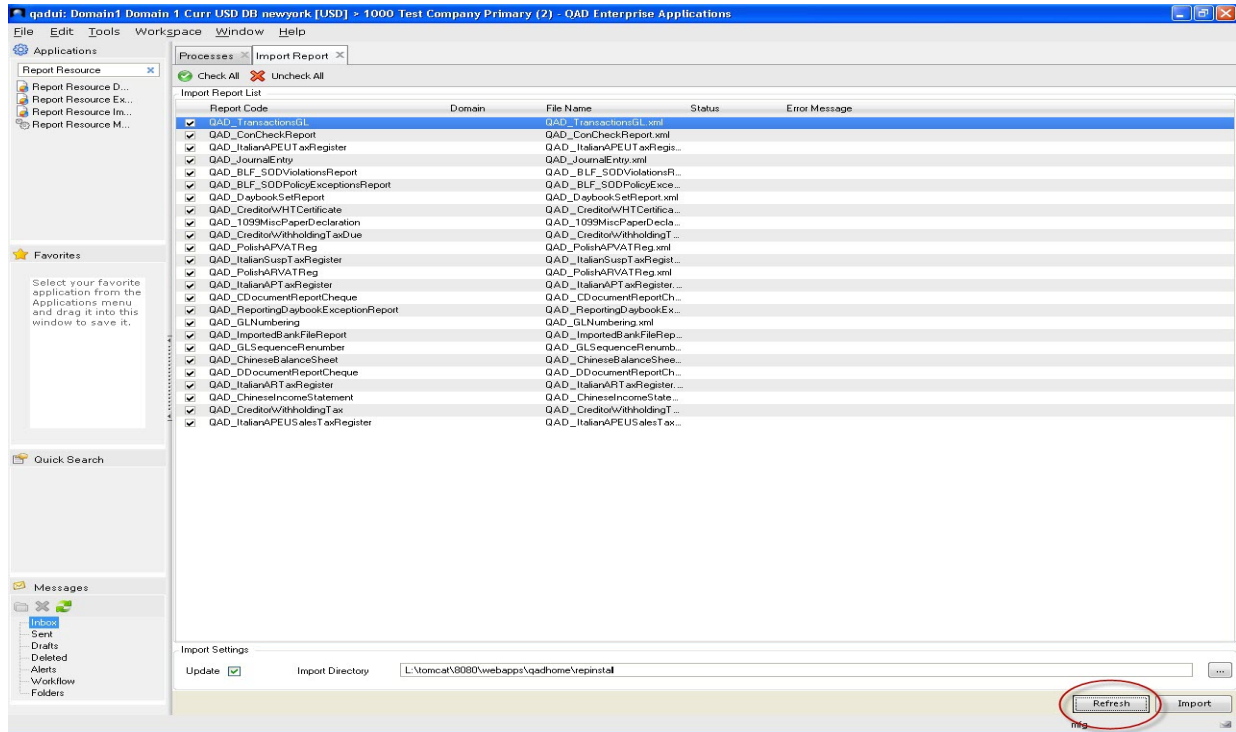


- 3 Select the Update check box so that existing reports will be updated (Figure 4, item 1).
- 4 Enter the directory where the report XML was copied during the patch install. This will be *<Tomcat Directory>/webapps/qadhome/repinstall* (Figure 4, item 2).

If QDT and QAD EE are installed on a UNIX or Linux system, the drive referenced in Figure 4, item 2 will not be a local drive on the machine running .NET UI. For a successful import, you must mount the Tomcat directory containing the copied patch installation files to the Windows system as a network drive. The reference in the Input Directory field (Figure 4, item 2 and the circled area in Figure 5) will point to the network-mounted drive, allowing for the import of files from the UNIX/Linux system.

- 5 Click the Refresh button to refresh the display and show the reports.

Fig. 5
Import Report: Reports List



- 6 Select the reports that you want to import (the default is all).
- 7 Click the Import button to import the reports.
- 8 Log out of Enterprise Edition.

