



Patch Deployment: QAD Enterprise Applications 2010 Enterprise Edition

June 2, 2010

Contents

Overview 2

Back-up Existing System 2

Installation Steps 2

Notes 9

Overview

The following document provides the steps required to deploy a QAD 2010 EE patch into a customer environment. The steps are valid for QAD 2010 EE (SP6) only. Note that this document provides the last deployment stage of the patch process. To obtain the patch file, please contact QAD Support.

Back-up Existing System

Ensure the following files/folders/databases are backed up for all environments to be updated.

- `<QAD 2010 EE Install Directory>/qra`
- `<QAD 2010 EE Install Directory>/fin`
- `<QAD 2010 EE Install Directory>/xrc/proxy`
- `<QAD 2010 EE Install Directory>/qadui`
- `<QDT Install Directory>/xml`
- Progress backup of all production databases
- `<Tomcat Install Directory>/webapps/qadhome`

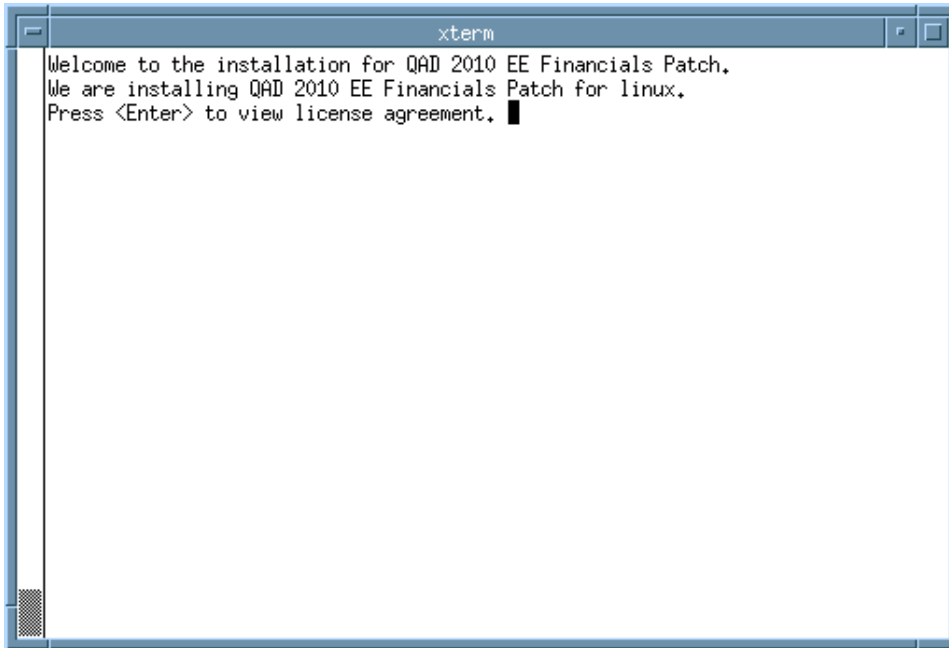
Previously installed hot fixes may interfere with proper installation of this patch. Ensure the following folders are backed up and the contents deleted:

- `<QAD 2010 EE Install Directory>/fin/patch`
- `<QAD 2010 EE Install Directory>/fin/proxypatch`

Installation Steps

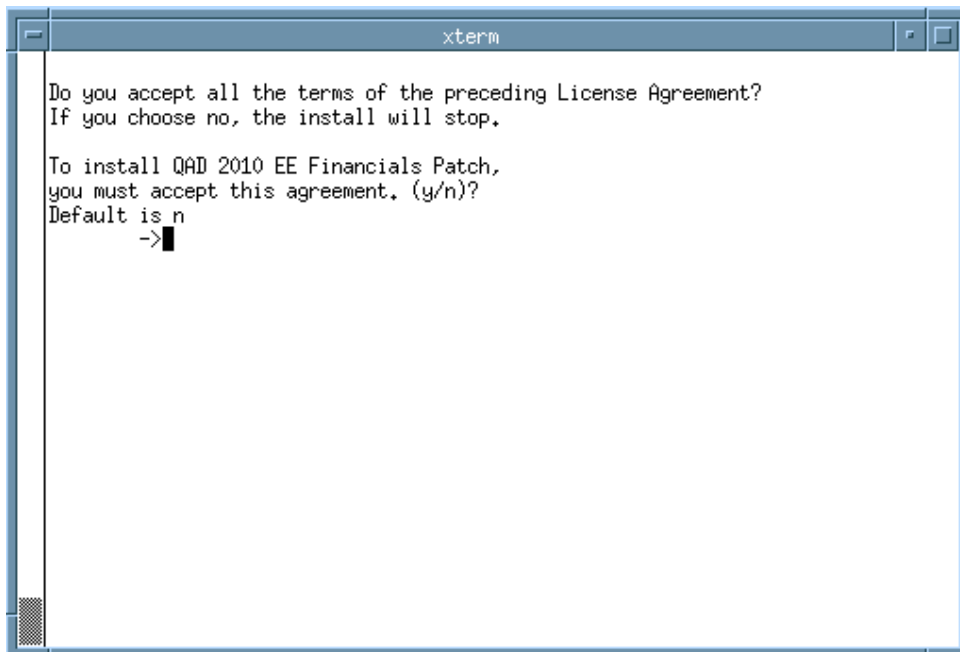
- 1 Shut down all QAD EE systems:
 - a Stop Tomcat by using the appropriate script in `<Tomcat Install Directory>/bin`.
 - b Stop any add-ons that are integrated into your QAD 2010 EE environment.
 - c Stop all QAD 2010 EE servers and databases by using the `stopenv` script located in `<QDT Install Directory>/envs/<Environment Names>/scripts`.
- 2 Download and extract the patch bundle (zip file) to the system being patched. (`qad2010ee_patch<patch number>.zip`). The files are extracted into a subdirectory named `patch<technical version number>`.

- 3 From the patch<*technical version number*>/<*install directory*>, run `instpatch.ksh` for UNIX and Linux operating systems or `instpatch.exe` for Windows.



```
xterm
Welcome to the installation for QAD 2010 EE Financials Patch.
We are installing QAD 2010 EE Financials Patch for linux.
Press <Enter> to view license agreement. █
```

- 4 Read and accept the license agreement.

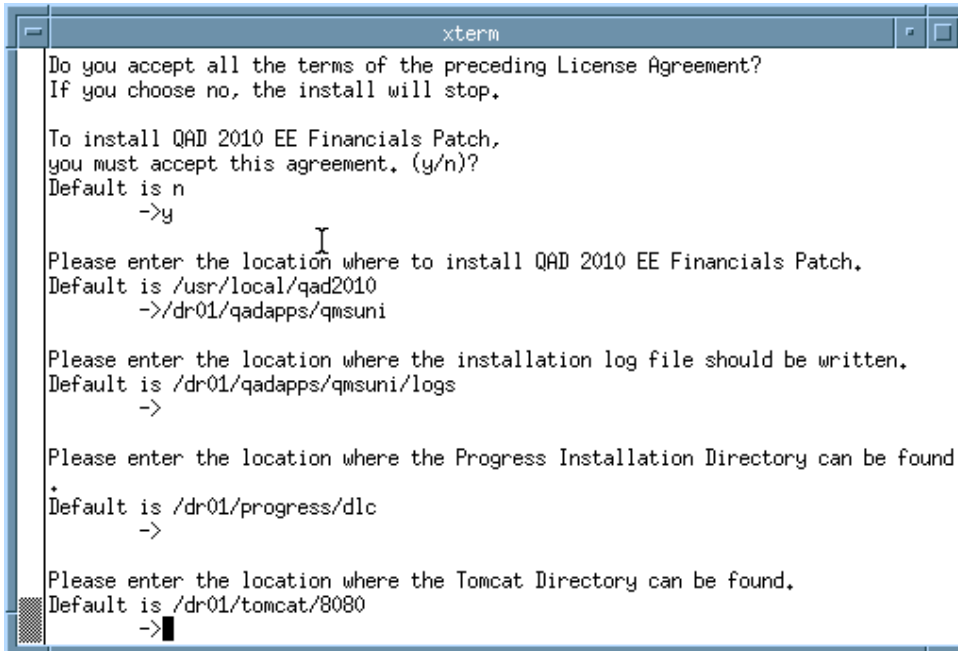


```
xterm
Do you accept all the terms of the preceding License Agreement?
If you choose no, the install will stop.

To install QAD 2010 EE Financials Patch,
you must accept this agreement. (y/n)?
Default is n
-> █
```

4 Patch Deployment — QAD 2010 Enterprise Edition

- 5 Enter the locations where that the patch installer needs to apply the patch to your system; *<QAD 2010 EE Install Directory>*, location for log files from this patch installation, *<QDT Install Directory>* and *<Tomcat Install Directory>*.



```
xterm
Do you accept all the terms of the preceding License Agreement?
If you choose no, the install will stop.

To install QAD 2010 EE Financials Patch,
you must accept this agreement. (y/n)?
Default is n
->y

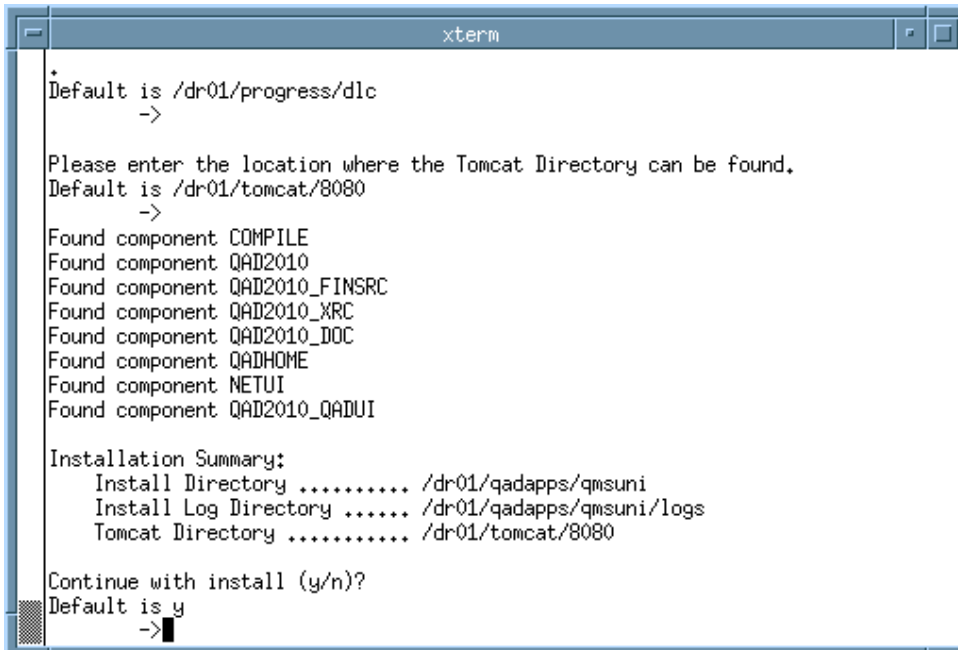
Please enter the location where to install QAD 2010 EE Financials Patch.
Default is /usr/local/qad2010
->/dr01/qadapps/qmsuni

Please enter the location where the installation log file should be written.
Default is /dr01/qadapps/qmsuni/logs
->

Please enter the location where the Progress Installation Directory can be found
*
Default is /dr01/progress/dlc
->

Please enter the location where the Tomcat Directory can be found.
Default is /dr01/tomcat/8080
->
```

- 6 A summary of the values input by the user is printed. Press *<Enter>* or type “y” to continue the install.



```
xterm
*
Default is /dr01/progress/dlc
->

Please enter the location where the Tomcat Directory can be found.
Default is /dr01/tomcat/8080
->

Found component COMPILE
Found component QAD2010
Found component QAD2010_FINSRC
Found component QAD2010_XRC
Found component QAD2010_DOC
Found component QADHOME
Found component NETUI
Found component QAD2010_QADUI

Installation Summary:
  Install Directory ..... /dr01/qadapps/qmsuni
  Install Log Directory ..... /dr01/qadapps/qmsuni/logs
  Tomcat Directory ..... /dr01/tomcat/8080

Continue with install (y/n)?
Default is y
->
```

- 7 The files are copied to the specified locations and a summary of the installation activities displays on the screen. View the log to ensure that there were no problems extracting the files.

```

xterm
      to directory: /dr01/tomcat/8080/webapps/qadhome
Expanding /dr01/users/mfg/patch71.4.6/netui/packages_UIG-6568.zip
  to /dr01/tomcat/8080/webapps/qadhome ...

  Extracted 6 files.
  1 file copied.

Copying from directory: /dr01/users/mfg/patch71.4.6/qad2010/qadui
  to directory: /dr01/qadapps/qmsuni/qadapps/qmsuni/qadui/com/qad/shell/
interface
Expanding /dr01/users/mfg/patch71.4.6/qad2010/qadui/pcode_UIG-6568.zip
  to /dr01/qadapps/qmsuni/qadapps/qmsuni/qadui/com/qad/shell/interface ...

  Extracted 2 files.
  1 file copied.

File copy complete.
Performing post-installation tasks
Installation completed

Log written to /dr01/qadapps/qmsuni/logs/instfin.log

Press <enter> to end script.

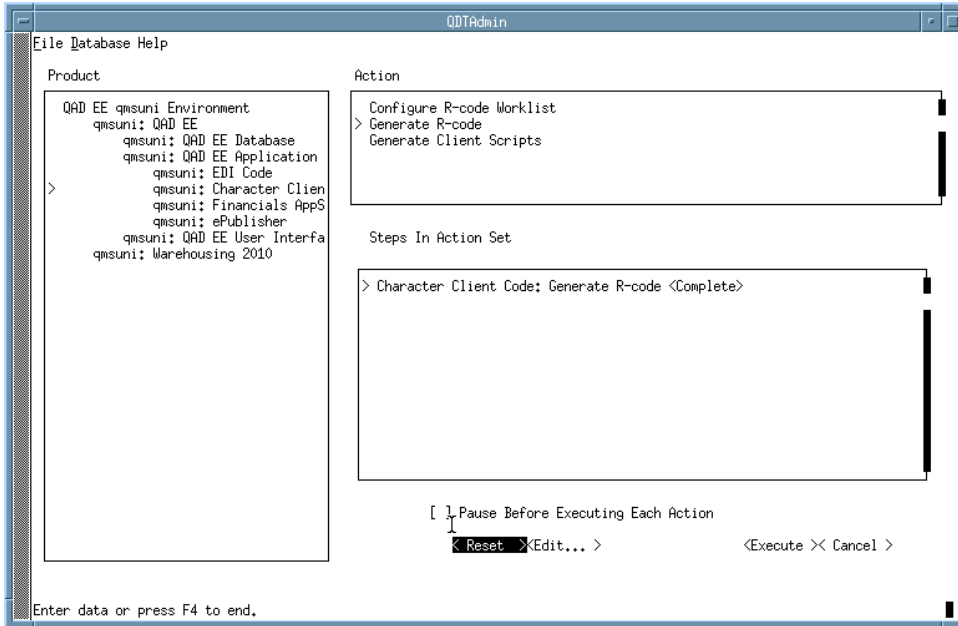
```

- 8 If you have multiple instances of QAD 2010 EE installed with a single QDT, you must repeat steps 3 to 7 for each. Since they all use the same “qadhome” WebApp in Tomcat, they must all be patched together. Once this is complete, start QDT and launch QDT/Admin by clicking on the “admin” button.

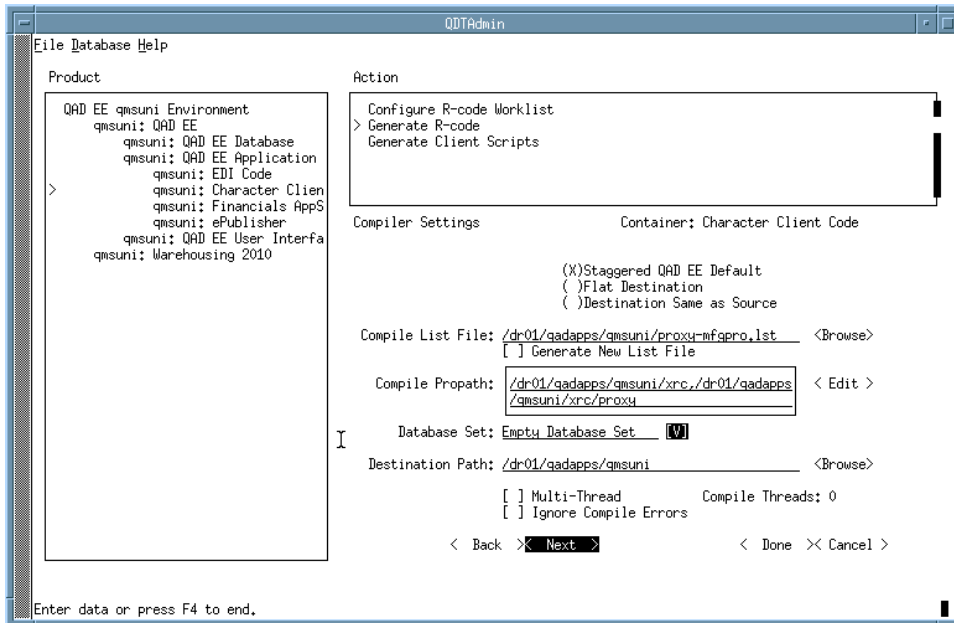


6 Patch Deployment — QAD 2010 Enterprise Edition

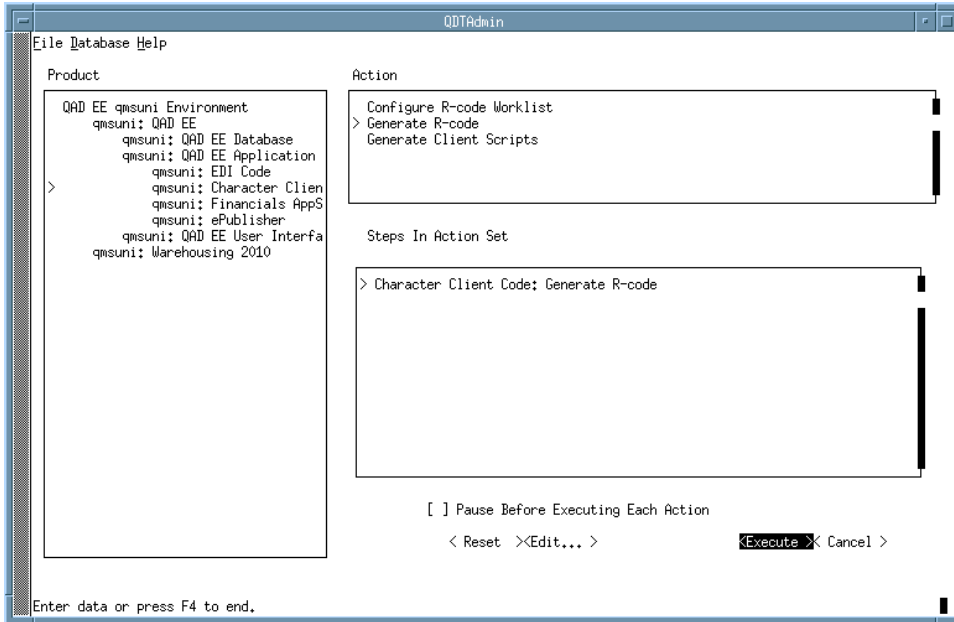
- 9 Navigate to the Character Client|Generate R-code actions set and select Reset. This enables QDT/Admin to recompile programs. Answer *yes* when prompted and close the output screen to continue.



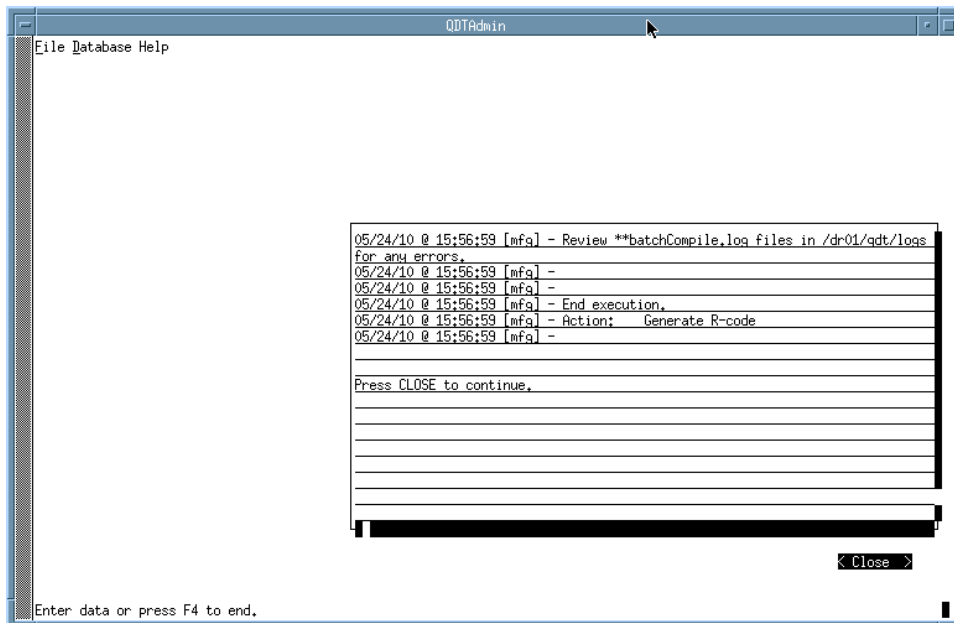
- 10 Once the Reset action has been run, select Edit. In the Compile List File field, enter the name of the compile list that installer extracted. This file can be found in `<QAD2010EE Install Dir>/proxy-mfgpro.lst`. Select Done when finished.



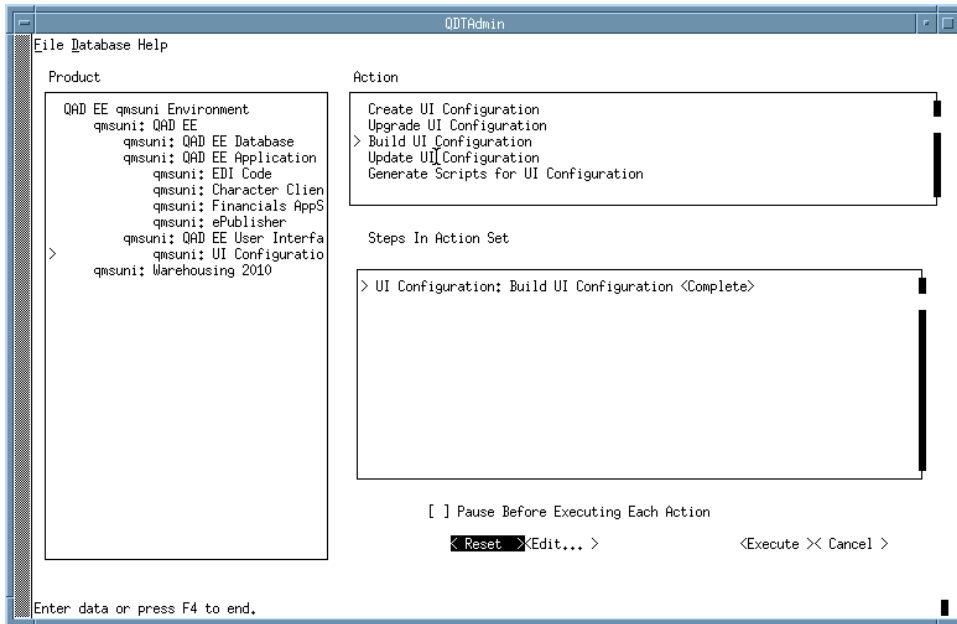
- 11 Once the Character Client|Generate R-code actions set has been modified with the new compile list, click Execute to start the compile. Select “Yes” when prompted and choose whether or not to clear the log to continue.



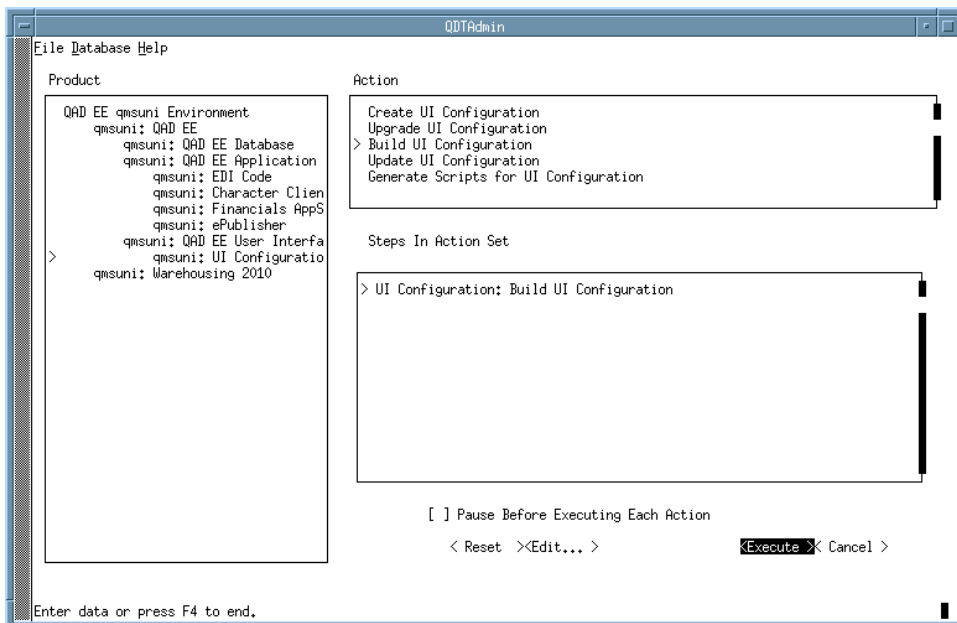
- 12 When the compile completes, check the log files for errors as indicated in the QDT/Admin log window. There will be one log file created for each compile thread that was specified in step 14; the files are named `XXbatchCompile.log` and are located in `<QDT Install Directory>/logs` by default. Select Close to continue.



- 13 Navigate to the QAD EE User Interface|Build UI Configuration actions set and select Reset. This enables QDT/Admin to recompile programs for the .NET UI. Answer yes when prompted and close the output screen to continue.



- 14 Once this actions container is reset, select Execute to recompile the .NET UI programs. Select Yes when prompted and choose whether or not to clear the log to continue. Once this action is complete, review the logs as indicated to verify that the Build UI Configuration completed successfully. Then click Close to finish this action.



- 15 If you have multiple instances of QAD 2010 EE built with this instance of QDT, you must repeat steps 9 to 14 for each of them. Once this has been completed, exit from QDT/Admin and then exit out of QDT. This concludes the server portion of the patch install.

- 16 QDT started the application servers as part of rebuilding the UI Configuration; we need to stop them before we can proceed. Invoke the `stopenv` script(s) located in `<QDT Install Directory>/envs/<Environment Name(s)>/scripts`.
- 17 Start up all QAD EE systems:
 - a Invoke the `startenv` script(s) located in `<QDT Install Directory>/envs/<Environment Name(s)>/scripts`.
 - b Start up other add-ons as needed.
 - c Stop Tomcat by using the appropriate script in `<Tomcat Install Directory>/bin`.
- 18 Once the QAD 2010 EE environment has been started, run system synchronize to ensure all components are updated. This can be done through QDT or through the .NET UI as a user with administrative privileges.
- 19 Upon launching the .NET UI client, you are prompted to update any plug-ins that have changed. Accept all prompts.

The system is now ready for users.

Notes

Factory Defaults

All changes in factory defaults are overwritten each time a patch is installed. System Synchronize loads the latest Factory Defaults contained in the patch.

To preserve your work, you can make a separate dump of the changed settings (programs Stored Searches Initial Settings Export, Report Variants Initial Settings Export) and save the XML files that these functions create on the server (location where QADFC components library is located). After a patch update you can reload the saved XML files through System Synchronize (but then losing the latest Factory Default settings shipped by QAD in the patch).

Financial Source Code Documentation

The patch includes a zip file containing documentation of the Enterprise Financials API methods and sample source code in the form of pseudo code. This documentation provides more insight into the internal logic of the business components and their public interfaces and is an indispensable aid to programmers who want to use the customization layer to build custom programs integrated with Enterprise Financials, or who want to call one of the exposed Enterprise Financials API methods. The documentation consists of a linked set of HTML pages and is organized hierarchically by project, class, method - query - dataset/data item; use the `index.html` file to navigate the information.

This file is not automatically unzipped. It can be moved and unzipped into an appropriate directory for reference by qualified developers.

An updated version of the documentation is provided with each patch to ensure that the code samples correspond with the actual code being executed at the corresponding patch level.

