

QAD Manufacturing and Supply Chain Reports and Browsers Bundle Release Notes

March 2015

Release Notes for Current Release 2

Release Notes for Version 1.2 3

Release Notes for Version 1.1 5

Release Notes for Current Release

Manufacturing and Supply Chain Reports and Browsers Bundle Version: 1.3

Release Date: March 2015

QAD Enterprise Applications Compatibility: QAD Enterprise Edition 2011 and later

Related Documentation: The *Reports and Browsers Bundles Installation Guide* is provided on the product delivery media. It is also available in the QAD Document Library, <http://www.qad.com/documentlibrary>.

This release includes a change to enhanced reporting functions in Manufacturing and Supply Chain areas of Enterprise Edition.

The change is related to the way in which the system displays the currency amount in several .NET UI reports. The format is now based on the rounding method specified in Currency Create or Currency Modify for the report selection currency. If the report does not include currency as a selection filter, amounts display according to the rounding method specified for the domain base currency.

Affected reports include the following:

- Transactions Detail Report (3.21.25)
- Daybook Trans Acct Report (3.21.36)
- DO Shipment Transaction Report (12.17.31)
- Transactions Accounting Report (3.21.40)
- Requisition To PO Report (5.2.43)
- Inventory Valuation As Of By Loc (1.5.48)
- Inventory Valuation As Of Date (1.5.47)
- Inventory Valuation By Location (1.5.46)
- Inventory Valuation Report (1.5.45)
- Item ABC Status Report Update (1.5.33)
- Item Cost Report (1.5.30)
- Work Order Cost Report (16.3.28)
- WIP Valuation Report (18.22.4.37)
- Routing Cost Report (14.13.38)
- Operation Transaction Detail Report (16.20.13.33)

Release Notes for Version 1.2

Manufacturing and Supply Chain Reports and Browsers Bundle Version: 1.2

Release Date: March 2012

QAD Enterprise Applications Compatibility: QAD Enterprise Edition 2011, 2011.1

Note The reports are also provided as part of standard installation for QAD 2012 Enterprise Edition.

QAD .NET UI Versions: 2.9.3, 2.9.3.79

Related Documentation: The *Reports and Browsers Bundles Installation Guide* is provided on the product delivery media for the optional add-on release available for 2011 and 2011.1 EE. That guide is also available on the Documentation area of support.qad.com under the Installation-Conversion topic for your Enterprise Edition version.

This bundle includes a set of enhancements to reporting functions in Manufacturing areas within Enterprise Edition. Many reports have been rewritten using QAD Reporting Framework to provide a significantly improved reporting capability to users of the QAD .NET UI. Additionally, the functions of some existing reports have been incorporated into browsers.

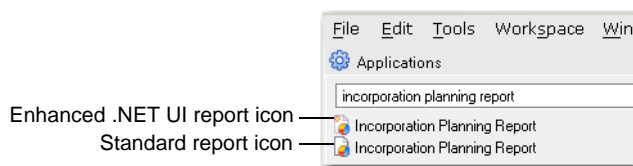
This is part of an ongoing QAD effort to upgrade reports, browsers, and inquiries throughout the system, building on the advanced filtering and report-generation tools available in .NET and QAD Reporting Framework, as well as powerful browse capabilities.

Note The legacy versions of all reports are still available in their original menu locations.

You can access the new reports in several ways:

- By entering the report title in the menu search field. The search result lists two occurrences. The icon differentiates between the standard and enhanced .NET UI versions. Figure 2 shows an example.

Fig. 1
Report Icons in .NET UI



- By entering the new menu number in the menu search field. QAD .NET UI-only reports are assigned to menu numbers 25 or greater, so they are hidden on the character UI menus, as shown in Table 2.

Note You cannot access a new report by entering a Progress program name.

- By navigating in the menu tree to the functionality area. The new reports appear in the same part of the menu as their standard report equivalents.

Note This bundle is cumulative; it also includes reports in the Manufacturing and Supply Chain areas that were previously introduced. For lists of those reports, see “Release Notes for Version 1.1” on page 5.

Table 1
New Manufacturing Reports

Legacy Menu	Report Title	Legacy Program	New Menu	New Report Title
1.5.6	Item Cost Report	ppptrp13.p	1.5.30	Same
1.5.8, 3.6.1	Stock Status Report	ppptrp01.p	1.5.32, 3.6.25	Same
1.5.9, 3.6.3	Item ABC Status Report/Update	ppptrp04.p	1.5.45, 3.6.27	Same

Legacy Menu	Report Title	Legacy Program	New Menu	New Report Title
3.6.5	Inventory Detail Report	ppptrp08.p	3.5.29	Same
3.6.6	Inventory Detail by Location	iclorp.p	3.3	Inventory Detail by Site Browse (added functionality)
3.6.8	Current Surplus Inventory Report	ppptrp21.p	3.6.32	Same
1.5.21, 3.6.13	Inventory Valuation Report	ppptrp03.p	1.5.45, 3.6.37	Same
1.5.22, 3.6.14	Inventory Valuation by Location	ppptrp05.p	1.5.46, 3.6.38	Same
1.5.23, 3.6.15	Inventory Valuation as of Date	ppptrp06.p	1.5.47, 3.6.39	Same
1.5.24, 3.6.16	Inventory Valuation as of by Loc	ppptrp07.p	1.5.48, 3.6.40	Same
3.6.18	Stock Journal	icstjrp.p	3.6.42	Same
3.6.20	Device History Record Report	ppptdhrp.p	3.6.44	Same
3.6.21	Item Scrap Report	icscrprp.p	3.6.23	Inventory Scrap Trans Browse (added functionality)
			3.6.45	Item Scrap Report
3.13.3	Cycle Count Results Report	icccrp01.p	3.13.27	Same
3.21.14	Transactions by Item Report	ictrrp01.p	3.21.2	Same (added functionality)
13.8.1	Product Structure by Item Report	bmpsrp.p	13.8.25	Same
13.8.2	Product Structure by Nbr Report	bmpsrp02.p	13.8.26	Same
13.12.4	Product Structure Cost Report	bmpsrp01.p	13.12.28	Same
14.13.4	Routing Report	rwrorp.p	14.13.28	Same
16.3.1	Work Order by Order Report	woworp.p	16.2	Work Order Browse (added functionality)
16.3.2	Work Order by Item Report	woworp01.p	16.2	Work Order Browse (added functionality)
16.3.3	Work Order Status Report	woworp02.p	16.3.27	Same
16.3.4	Work Order Cost Report	woworp05.p	16.3.28	Same
16.3.5	Work Order WIP Cost Report	woworp09.p	16.3.29	Same
16.6	Work Order Release/Print	woworl.p	16.30	Same
16.13.1	Work Order Bill Maintenance	wowamt.p	16.13.2	Work Order Bill Browse (added functionality)
16.13.3	Work Order Bill by Order Report	wowarp01.p	16.13.2	Work Order Bill Browse (added functionality)
16.13.15	Work Order Routing Report	woopr.p	16.13.39	Same
16.20.13.20	Efficiency by Work Order Report	sfopr.p	16.20.13.44	Same
18.22.4.13	WIP Valuation Report	reworp03.p	18.22.4.37	Same
22.4	Forecast Report	fcfsiq.p?	22.28	Same
23.7	Action Message Report	mrmprp02.p	23.6	Action Message Browse (added functionality)
23.12	Planned Order Report	mrworp11.p	23.36	Same
23.14	MRP Summary Report	mrmprp11.p	23.38	Same
23.17	MRP Detail Report	mrmprp01.p	23.41	Same

Release Notes for Version 1.1

Manufacturing and Supply Chain Reports and Browsers Bundle Version: 1.1

Release Date: September 2011

QAD Enterprise Applications Compatibility: QAD Enterprise Edition 2011 and 2011.1

QAD .NET UI Versions: 2.9.3

Related Documentation: The *Reports and Browsers Bundles Installation Guide* is provided on the product delivery media. That guide is also available on the Documentation area of support.qad.com under the Installation-Conversion topic for your Enterprise Edition version.

This optional add-on package includes a set of enhancements to reporting functions (including viewers, inquiries, and browsers) in Manufacturing and Supply Chain areas within Enterprise Edition. Many reports have been rewritten using QAD Reporting Framework to provide a significantly improved reporting capability to users of the QAD .NET UI. Additionally, some existing inquiries were converted to browsers or viewers, and/or added to collections.

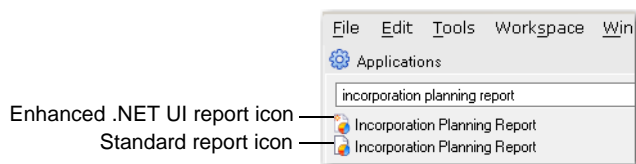
This is part of an ongoing QAD effort to upgrade reports, browsers, and inquiries throughout the system, building on the advanced filtering and report-generation tools available in .NET and QAD Reporting Framework, as well as powerful browse capabilities.

Note The legacy versions of all reports are still available in their original menu locations.

You can access the new reports in several ways:

- By entering the report title in the menu search field. The search result lists two occurrences. The icon differentiates between the standard and enhanced .NET UI versions. Figure 2 shows an example.

Fig. 2
Report Icons in .NET UI



- By entering the new menu number in the menu search field. QAD .NET UI-only reports are assigned to menu numbers 25 or greater, so they are hidden on the character UI menus, as shown in Table 2.

Note You cannot access a new report by entering a Progress program name.

- By navigating in the menu tree to the functionality area. The new reports appear in the same part of the menu as their standard report equivalents.

Table 2
New Manufacturing and Supply Chain Reports, Browsers, Viewers, and Collections

Standard Menu Number	Standard Menu Title	Standard Program	New Menu Number	New Menu Title
1.2.6	Purchasing Account Inquiry	ppplpiq.p	1.2.6	Purchasing Account Viewer
1.2.10	Work Order Account Inquiry	ppplwiq.p	1.2.10	Work Order Account Viewer
1.2.21.2	Inbound Account Inquiry	laiaciq.p	1.2.21.2	Inbound Account Browse
1.2.21.17	Outbound Expense Account Inquiry	laoexpiq.p	1.2.21.17	Outbound Expense Account Browse
2.15.2	Logistics Charge Code Inquiry	lalcicq.p	2.15.2	Logistics Charge Code Viewer
2.15.5	Terms of Trade Inquiry	latotiq.p	2.15.5	Terms of Trade Browse

Standard Menu Number	Standard Menu Title	Standard Program	New Menu Number	New Menu Title
2.15.17	Outbound Accrual Account Inquiry	laoacriq.p	2.15.17	Outbound Accrual Account Browse
2.23.2	Blocked Transaction Report	adbltrrp.p	2.23.26	Blocked Transaction Report
2.23.8	Blocked Supplier Report	adblvdrp.p	2.23.32	Blocked Supplier Report
3.5.1.13	Inventory Type Item Report	icobtrp.p	3.5.1.37	Inventory Type Item Report
3.5.1.14	Item Inventory Type Report	icobirp.p	3.5.1.38	Item Inventory Type Report
3.5.1.19	Consumption Report	icobcrp.p	3.5.1.43	Consumption Report
3.21.19	Transaction Numbering Report	ictrnrp.p	3.21.43	Transaction Numbering Report
3.22.13.2	Routing Registration Inquiry	wlrmiq.p	N/A	Routing Registration Collection
3.22.13.5	BOM Registration Inquiry	wlbmiq.p	N/A	BOM Registration Collection
5.2.1.17	Approver Report	rqarp.p	5.2.1.41	Approver Report
5.2.17	PO and Req. Cross Reference	rqpoi.p	5.2.17	PO and Req. Cross Reference
5.2.21	Out of Tolerance Inquiry	rqrqiq4.p	5.2.21	Out of Tolerance Browse
5.2.1.5	Category Report	rqcrp.p	N/A	Category Collection
5.5.5.8	PO Shipper Unconfirmed Report	rsrp12.p	5.5.5.32	PO Shipper Unconfirmed Report
5.13.17	PO Fiscal Receipt Inquiry	posmrciq.p	5.13.41	PO Fiscal Receipt Report
5.15.2	Performance Category Inquiry	poveciq.p	5.15.2	Performance Category Browse
12.1.15	Source Network Report	dnssrp01.p	12.1.39	Source Network Report
12.17.3	Intersite Demand Summary Inquiry	dsdmiq02.p	12.17.27	Intersite Demand Summary Report
12.19.8	DO Container Inquiry	dodsctiq.p	12.19.32	DO Container Report
12.19.9	DO Container by Item Inquiry	dodsitiq.p	12.19.33	DO Container by Item Report
16.20.13.14	Operations by Work Order Report	sfopr12.p	16.20.13.38	Operations by Work Order Report
18.22.5.6	Sub Shipper/Container Inquiry	reiq03.p	18.22.5.30	Sub Shipper/Container Report
21.3	Resource Report	rprsrp.p	21.3	Resource Browse
21.7	PL Resource Bill Report	rppqrp.p	21.7	PL Resource Bill Browse
22.7.2	Simulation Criteria Inquiry	ffsciq.p	22.7.26	Simulation Criteria Report
30.18.2	Linked-Site Rules Inquiry	clsriq.p	30.18.2	Linked-Site Rules Browse
33.1.5	Calendar Cross-Reference Inquiry	spglcliq.p	33.1.5	Calendar Cross-Reference Browse
33.5.21	Pallet Inquiry	sppaliq.p	33.5.21	Pallet Browse
33.15.11	Production Labor Inquiry	spactiq.p	33.15.35	Production Labor Report
33.15.12	Site Utilization Inquiry	spflut.p	33.15.36	Site Utilization Report

Earlier Reports

The bundle also includes a group of reports that were delivered as part of QAD 2011 EE. These are listed in Table 3. The bundle includes some minor fixes to some of the reports.

Table 3
Manufacturing and Supply Chain Reports and Browsers Added in QAD 2011 EE

Standard Menu Number	Standard Menu Title	Standard Program	New Menu Number	New Menu Title
1.2.19	Sales Account Report	ppplsrp.p	1.2.18	Sales Account Browse
1.9.7.3	Incorporation Planning Report	ecinplan.p	1.9.7.27	Incorporation Planning Report
1.22.14	Lot Group Inquiry	clliq.p	1.22.14	Lot Group Browse
1.22.16.14	General License Report	clglirp.p	1.22.16.15	General License Browse

Table 3 — Manufacturing and Supply Chain Reports and Browsers Added in QAD 2011 EE (1 of 3)

Standard Menu Number	Standard Menu Title	Standard Program	New Menu Number	New Menu Title
1.22.16.2	Controlled Authority Inquiry	clctaiq.p	1.22.16.2	Controlled Authority Browse
3.21.1	Transactions Detail Inquiry	ictriq.p	3.21.25	Transactions Detail Report
3.21.12	Daybook Trans Accounting Report	icdyacrp.p	3.21.36	Daybook Trans Accounting Report
3.21.13	Transactions by Order Report	ictrrp02.p	3.21.4	Transactions by Order Browse
3.21.16	Transactions Accounting Report	ictrrp03.p	3.21.40	Transactions Accounting Report
3.22.13.17	WIP Lot Inquiry	wliq01.p	3.22.13.22	WIP Lot Browse
3.6.21	Item Scrap Report	icscrprp.p	3.6.23	Inventory Scrap Trans Browse
3.6.22	Financial Scrap Report	icscfnrp.p	3.6.46	Inventory Scrap Trans Acct Rpt (Formatted with Detail Layout)
			3.6.47	Inventory Scrap Acct Rpt (Formatted with Summary Layout)
3.6.23	Scrap Transaction Browse	icbr027.p	3.6.23	Inventory Scrap Trans Browse
5.2.19	Requisition to PO Report	rqrqrp6.p	5.2.43	Requisition to PO Report
5.2.16	Approver's Open Req. Inquiry	rqrqiq3.p	5.2.16	Approver's Open Req. Browse
5.5.7.2	Ship Delivery Time Inquiry	rssdtiq.p	5.5.7.3	Ship Delivery Time Browse
5.15.4	Supplier/Category Inquiry	povesciq.p	5.15.4	Supplier/Category Browse
5.15.6	Performance Event Inquiry	poveeiq.p	5.15.6	Performance Event Browse
5.15.8	Perform Weight Factor Inquiry	povewiq.p	5.15.8	Perform Weight Factor Browse
5.15.14	Performance Data Report	povedrp.p	5.15.38	Performance Data Report
5.15.23.4	Supplier Cross-Reference Report	povexrp.p	5.15.23.5	PO Supplier Cross-Reference Browse
			5.15.23.6	DO Supplier Cross-Reference Browse
12.5.11	Shipping Schedule Report	dnssrp03.p	12.5.35	Shipping Schedule Report
12.5.18	Shipping Load Summary Report	dntmrp01.p	12.5.42	Shipping Load Summary Report
12.5.21	Shipping Load Detail Report	dntmrp02.p	12.5.22	Shipping Load Detail Browse
12.13.12	Planned Intersite Request Report	drdorp11.p	12.13.11	Planned Intersite Request Browse
12.15.6	Distributed Inventory Report	dslorp01.p	12.15.30	Distributed Inventory Report
12.17.7	DO Shipment Transaction Report	dsdoshrp.p	12.17.31	DO Shipment Transaction Report
13.3	Product Structure Code Report	bmmarp.p	13.27	Product Structure Code Report
13.8.18	Simulated Picklist Report	bmpkrp.p	13.8.42	Simulated Picklist Report
13.8.20	Materials Summary Report	bmsprp06.p	13.8.44	Materials Summary Report
14.3	Department Report	rwdprp.p	14.2	Department Browse
14.7	Work Center Report	rwwcrp.p	14.6	Work Center Browse
14.13.14	Routing Cost Report	rwrorp01.p	14.13.38	Routing Cost Report
14.17.3	Work Center/Routing Stds Report	rwwrrp.p	14.17.2	Work Center/Routing Stds Browse
15.3	Formula Code Report	fmmarp.p	15.27	Formula Code Report
15.7.1	Formula by Component Report	fmpsrp.p	15.7.25	Formula by Component Report
15.7.18	Simulated Batch Ingredient Reprt	fmpkrp.p	15.7.42	Simulated Batch Ingredient Rpt
16.20.13.9	Operation Transaction Detail Inq	sfopiq12.p	16.20.13.33	Operation Transaction Detail Report
16.20.13.12	Input/Output Report	sfiorp.p	16.20.13.36	Input/Output Report
17.14.2	Prelim Level Schedule Report	kbplsrp.p	17.14.26	Prelim Level Schedule Report
18.1.23	Shift Report	rescrp.p	18.1.47	Shift Report
18.4.2	Repetitive Trans Detail Inquiry	reopiq12.p	18.4.26	Repetitive Trans Detail Report

Table 3 — Manufacturing and Supply Chain Reports and Browsers Added in QAD 2011 EE (2 of 3)

Standard Menu Number	Standard Menu Title	Standard Program	New Menu Number	New Menu Title
18.22.1.23	Shift Report	rescrp.p	18.22.1.47	Shift Report
20.3	Product Line Plan Report	plpprp.p	20.27	Product Line Plan Report
20.7	Shipments Plan Report	plpprp01.p	20.31	Shipments Plan Report
21.10	PL Resource Load Summary Report	rprsrp03.p	21.34	PL Resource Load Summary Report
20.11	Orders Plan Report	plpprp02.p	20.35	Orders Plan Report
20.15	Production Plan Report	plpprp03.p	20.39	Production Plan Report
20.19	Inventory Plan Report	plpprp04.p	20.43	Inventory Plan Report
20.23	Backlog Plan Report	plpprp05.p	20.47	Backlog Plan Report
21.12	PL Resource Load Detail Report	rprsrp04.p	21.36	PL Resource Load Detail Report
21.24	Item Resource Load Detail Report	rprsrp02.p	21.48	Item Resource Load Detail Report
24.5	Input/Output Report	sfiorp.p	24.29	Input/Output Report
30.13.15	Simul Work Center Rate Report	scrp03.p	30.13.14	Simul Work Center Rate Browse
30.22	Comparative Cost Set Report	scrp05.p	30.46	Comparative Cost Set Report
33.7.5	Global Production Report	sppnrp.p	33.7.29	Global Production Report
33.13.23	Production Data Report	sppprp.p	33.13.47	Production Data Report
33.15.4	Operations Plan Detail Report	spfprp04.p	33.15.28	Operations Plan Detail Report
33.17.7	Simulation Detail Report	spfsrp04.p	33.17.31	Simulation Detail Report
33.19.8	Production Data Report	sppprp.p	33.19.32	Production Data Report
33.19.14	Performance Report	spplrp.p	33.19.38	Performance Report

Table 3 — *Manufacturing and Supply Chain Reports and Browsers Added in QAD 2011 EE (3 of 3)*