



QAD Adaptive Applications

Installation Guide **QAD Planning and Scheduling Workbenches**

Installation Introduction
Installation

70-3423-3.3.12-Rev1
Planning and Scheduling Workbenches 3.3.12
Enterprise Edition 2016 and later
March 2020

This document contains proprietary information that is protected by copyright and other intellectual property laws. No part of this document may be reproduced, translated, or modified without the prior written consent of QAD Inc. The information contained in this document is subject to change without notice.

QAD Inc. provides this material as is and makes no warranty of any kind, expressed or implied, including, but not limited to, the implied warranties of merchantability and fitness for a particular purpose. QAD Inc. shall not be liable for errors contained herein or for incidental or consequential damages (including lost profits) in connection with the furnishing, performance, or use of this material whether based on warranty, contract, or other legal theory.

This document contains trademarks owned by QAD Inc. and other companies.

Copyright ©2020 by QAD Inc.

PlanningSchedWorkbench_IG_v3_3_12.pdf

QAD Inc.

100 Innovation Place
Santa Barbara, California 93108
Phone (805) 566-6000
<https://www.qad.com>

Contents

Change Summary	v
Chapter 1 Installation Introduction	1
Overview	2
Prerequisites	2
Installation Package	2
Patches and Customized Programs	2
Before You Begin	2
Chapter 2 Installation	3
Overview	4
Using YAB for Installation	4
Installation Tasks	4
Pre-installation Tasks	4
Download the Installation Package	4
Install the Package	5
Validate the Browse	5
Product Information Resources	7



Change Summary

Product Name Changes

Starting in September 2019, the new name for QAD's complete portfolio of products is QAD Adaptive Applications. Additionally, QAD Adaptive ERP is the new name for QAD's flagship ERP solution. QAD Adaptive ERP includes the functionality previously associated with QAD Cloud ERP and QAD Enterprise Applications - Enterprise Edition, plus the QAD Enterprise Platform and Adaptive UX which resulted from the Channel Islands program. Going forward, the terms QAD Enterprise Applications, QAD Cloud ERP, and Channel Islands will be deprecated but will remain in previous documentation and training materials. QAD's intention is to—as soon as possible—eliminate the use of the deprecated terms going forward.

Change Summary

Date/Version	Description	Reference
March 2020/version 3.3.12	Updated for March 2020 version	--
	Added information on browse validation	page 5
October 2019/version 3.3.12	New installation guide, based on YAB installation	--



Installation Introduction

This chapter discusses the following configuration information:

Overview 2

Describes the chapter contents.

Prerequisites 2

Describes system and software prerequisites that must be met before you install the workbenches.

Installation Package 2

Describes the contents of the installation package.

Before You Begin 2

Provides tasks that you should perform before you begin installation.

Overview

This document provides instructions to install the Planning and Scheduling Workbenches, version 3.3.12, a maintenance release for Enterprise Edition versions 2016, 2017, 2018, and 2019. This release implements the core EE version of the workbenches with enhancements and fixes.

Prerequisites

The following are prerequisites for this release of the Planning and Scheduling Workbenches:

- QAD EE 2016, 2017, 2018, or 2019 installed
- Java Runtime Environment (JRE) 1.6 and above
- Progress 11.6 and above
- YAB 1.5 and above

Installation Package

QAD provides the following installation component: Planning and Scheduling Workbenches package (includes schema, data, and source code). For information on downloading the package, see “Download the Installation Package” on page 4.

Patches and Customized Programs

The Planning and Scheduling Workbenches installation package contains modifications to the existing QAD EE programs. Therefore, if you applied QAD patches or customizations, it is your responsibility to merge the QAD patch changes, customizations, and any other changes after applying the installation package. QAD does not support customized programs.

Important Because the Planning and Scheduling Workbenches are powerful tools that summarize all your demand, supply, and capacity information across your planning/scheduling horizon, you should allocate one processor (core) per three production planners/schedulers to help prevent performance degradation.

Before You Begin

Before installing the package, you should back up your databases and supporting environments; see “Pre-installation Tasks” on page 4.



Installation

This chapter discusses the following information:

Overview 4

Provides an overview of the installation process and the two approaches to installation.

Pre-installation Tasks 4

Provides information to backup your databases before you install software.

Download the Installation Package 4

Provides instructions to download the Workbenches zip file installation package from the QAD Store.

Install the Package 5

Provides step-by-step instruction to install the Workbenches package using YAB.

Validate the Browse 5

Includes instructions for verifying that the browse qp001 works properly.

Overview

This section provides instructions on how to install the Planning and Scheduling Workbenches, version 3.3.12, onto systems with EE 2016, 2017, 2018, or 2019 already installed.

Using YAB for Installation

You install Planning and Scheduling Workbenches, version 3.2.12, using YAB 1.5 and above. YAB is a configuration management tool you can use to start, stop, reconfigure, and maintain the consistency of your EE environments. Your environment is defined in terms of discrete units, or packages, which you can replace and add as needed. Installations using YAB are only relevant for QAD EE 2016 and later.

Note For more information about using YAB, refer to the *Installation Guide* for your Enterprise Edition version.

Installation Tasks

The steps to install the Workbenches software include the following:

- Pre-installation Tasks: Back up your databases and supporting environments
- Download the Installation Package and merge any customizations you made
- Install the Package

Pre-installation Tasks

Before you install the Workbenches 3.3.12 package, you should back up your databases by choosing one of the following backup methods:

- Back up your databases and supporting environments. To back up all databases, execute the command:

```
yab database-backup
```

- To back up a specific database, execute the command:

```
yab database-[INSTANCE]-backup
```

Download the Installation Package

Follow these steps to download the workbenches installation package:

- 1 Download the workbenches.zip file from the QAD Store or from QAD Release Fulfillment.

Example netui-module-mswpsw-ee-ga-sourceLevel-3.3.12.n.zip

Where *sourceLevel* is either *unencrypted* or *encrypted*, depending on your source licensing agreement, and *n* is the 4th digit of the version build number.



Important Please be aware that even if you meet prerequisites listed in Chapter 1, the installation package does contain modifications to existing QAD programs. Consequently, if your company has applied QAD patches or customizations, for example, to any of the modified programs, it is your company's responsibility to merge the QAD patch changes, customizations, and any other changes once this installation package has been applied. QAD does not support customized programs.

Install the Package

Note Before proceeding, ensure that you are familiar with YAB commands. See the *QAD Configuration and Administration Guide* for more information.

If you are installing the workbenches in a cloud environment, contact QAD Cloud Operations for instructions.

Installation Steps

To install the Workbenches package, using YAB, into an on-premise environment, execute the following command to install the package:

```
yab install netui-module-mswpsw-ee-ga-sourceLevel-3.3.12.n.zip
```

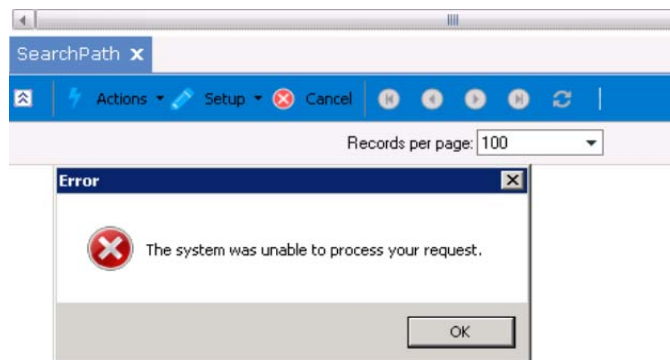
Where *sourceLevel* is either *unencrypted* or *encrypted*, depending on your source licensing agreement, and *n* is the 4th digit of the version build number.

Validate the Browse

After installing the Planning and Scheduling Workbenches, validate that the browse qp001 works properly.

- 1 Run Browse Master Browse (36.4.8.14). Right-click qp001 in the Browse Name column, and then click qp001.

If the system displays the following error message, it indicates that the browse qp001 is broken.



- 2 Check QAD Applications logs. To access the log file on .NET UI, choose Help > About on the menu bar and then click View Log.

The following information displays at the end of the log file:

6 Planning and Scheduling Workbenches Installation Guide

```
QAD.Proxy.ProxyMessageException: Exception of type  
'QAD.Proxy.ProxyMessageException' was thrown.ERROR: qpbr001.p: Unable  
to prepare query.
```

This issue occurred after you installed the Planning and Scheduling Workbenches in an EE environment with YAB 1.9.

- 3 Resolve this issue by referring to the following KnowledgeBase article:
<https://knowledgebase.qad.com/kmp/article/AB-25346>
- 4 Perform Step 1 again to check whether the browse qp001 functions properly.



Product Information Resources

QAD offers a number of online resources to help you get more information about using QAD products.

[QAD Forums \(community.qad.com\)](https://community.qad.com)

Ask questions and share information with other members of the user community, including QAD experts.

[QAD Knowledgebase \(knowledgebase.qad.com\)*](https://knowledgebase.qad.com)

Search for answers, tips, or solutions related to any QAD product or topic.

[QAD Document Library \(documentlibrary.qad.com\)](https://documentlibrary.qad.com)

Get browser-based access to user guides, release notes, training guides, and so on; use powerful search features to find the document you want, then read online, or download and print PDF.

[QAD Learning Center \(learning.qad.com\)*](https://learning.qad.com)

Visit QAD's one-stop destination for all courses and training materials.

*Log-in required

