



QAD Adaptive Applications

# Planning and Scheduling Workbenches Release Notes

**Version 3.3.12**

**Updated March 2020**

These release notes include information about updates related to the 3.3.12 maintenance release of the Planning and Scheduling Workbenches.

**Note** Starting in September 2019, the new name for QAD's complete portfolio of products is QAD Adaptive Applications. Additionally, QAD Adaptive ERP is the new name for QAD's flagship ERP solution. QAD Adaptive ERP includes the functionality previously associated with QAD Cloud ERP and QAD Enterprise Applications - Enterprise Edition, plus the QAD Enterprise Platform and Adaptive UX which resulted from the Channel Islands program. Going forward, the terms QAD Enterprise Applications, QAD Cloud ERP, and Channel Islands will be deprecated but will remain in previous documentation and training materials. QAD's intention is to—as soon as possible—eliminate the use of the deprecated terms going forward.

QAD recommends that you check the QAD Online Support Center to find other QAD documentation. To find documentation on the QAD support site, refer to the following URL:

<https://support.qad.com/>

Use the following list to find a specific release:

***Release Notes for Version 3.3.12 2***

# Release Notes for Version 3.3.12

**Planning and Scheduling Workbenches version:** 3.3.12

**QAD Enterprise Edition:** 2016, 2017, 2018, and 2019

**Release Date:** March 2020

**Prerequisites:** 2016, 2017, 2018, or 2019 EE release installed

**Important** Because the Planning and Scheduling Workbenches are powerful tools that perform intensive processing, depending on the data volumes your planners/schedulers need to process, it may be necessary to allocate an additional processor (core). This can only be determined after you try the application in your environment.

**Supported languages:** US English, Castilian Spanish, Latin Spanish, Dutch, French, German, Italian, Japanese, Polish, Portuguese (Brazilian), Simplified Chinese, Traditional Chinese, Korean, and Czech.

**User Guide:** the latest *Planning and Scheduling Workbenches User Guide*

**Administration Guide:** the latest *Planning and Scheduling Workbenches Administration Guide*

**Install Guide:** the latest *Planning and Scheduling Workbenches Installation Guide*

**Conversion Information:** Planning and Scheduling Workbenches conversion information can be found in *Planning and Scheduling Workbenches Administration Guide*.

## Enhancements

The following enhancements were made to the Planning and Scheduling Workbenches or associated EE core programs for this release:

### Improved Performance

The following functions have improved performance when you assign a new item on a production line and many work orders already exist for the item with a blank production line:

- Production Line Maintenance (18.22.1.1)
- Site Maintenance (1.1.13)
- Production Line Item Create (18.22.1.20)
- Production Line Maintenance (18.1.1)

## Fixes

You can find a list of fixes that apply to this version by visiting the [www.qad.com](http://www.qad.com) site. You should have a valid QAD login to enter the site. From there, you select Support > Store > Product Changes > MSW/PSW Patches > MSW/PSW 3.3.12. Or, you can use the following URL:

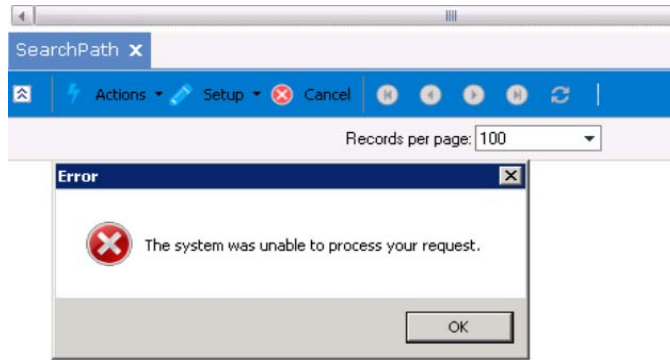
[https://tools.qad.com/product\\_changes/index.php](https://tools.qad.com/product_changes/index.php)

**Note** After installing the Planning and Scheduling Workbenches, validate that the browse qp001 works properly.

- 1 Run Browse Master Browse (36.4.8.14). Right-click qp001 in the Browse Name column, and then click qp001.

If the system displays the following error message, it indicates that the browse qp001 is broken.





- 2 Check QAD Applications logs. To access the log file on .NET UI, choose Help > About on the menu bar and then click View Log.

The following information displays at the end of the log file:

```
QAD.Proxy.ProxyMessageException: Exception of type  
'QAD.Proxy.ProxyMessageException' was thrown.ERROR: qpbr001.p: Unable to  
prepare query.
```

This issue occurred after you installed the Planning and Scheduling Workbenches in an EE environment with YAB 1.9.

- 3 Resolve this issue by referring to the following KnowledgeBase article:

<https://knowledgebase.qad.com/kmp/article/AB-25346>

- 4 Perform Step 1 again to check whether the browse qp001 functions properly.

