

*Industry-specific*

**QAD SOLUTIONS**

*Manufacturing Applications*

# **Installation Guide QAD Customer Self Service (QAD CSS)**

Installation Overview  
Installing QAD CSS  
Upgrading QAD CSS



78-0618C  
QAD CSS Version 4.1.4 and higher  
April 2005

This document contains proprietary information that is protected by copyright and other intellectual property laws. No part of this document may be reproduced, translated, or modified without the prior written consent of QAD Inc. The information contained in this document is subject to change without notice.

QAD Inc. provides this material as is and makes no warranty of any kind, expressed or implied, including, but not limited to, the implied warranties of merchantability and fitness for a particular purpose. QAD Inc. shall not be liable for errors contained herein or for incidental or consequential damages (including lost profits) in connection with the furnishing, performance, or use of this material whether based on warranty, contract, or other legal theory.

QAD and MFG/PRO are registered trademarks of QAD Inc. The QAD logo is a trademark of QAD Inc.

Designations used by other companies to distinguish their products are often claimed as trademarks. In this document, the product names appear in initial capital or all capital letters. Contact the appropriate companies for more information regarding trademarks and registration.

Copyright ©2005 by QAD Inc.  
78-0618C

**QAD Inc.**  
6450 Via Real  
Carpinteria, California 93013  
Phone (805) 684-6614  
Fax (805) 684-1890  
<http://www.qad.com>

# Contents

<b>About This Guide</b> .....	<b>1</b>
About QAD CSS .....	2
Other QAD CSS Documentation .....	2
QAD Web Site .....	3
Conventions .....	4
Typographic Conventions .....	4
UNIX and Windows Conventions .....	4
<b>Chapter 1 Installation Overview</b> .....	<b>5</b>
Configuration Overview .....	6
Deployment Options .....	7
Deployment Examples .....	8
Upgrading to a New Version .....	10
Prerequisites .....	10
Hardware and Networking Requirements .....	10
Software Requirements .....	10
Preparing to Install .....	11
Installation Directories .....	12
<b>Chapter 2 Installing QAD CSS</b> .....	<b>15</b>
Overview .....	16
Set Permissions (UNIX only) .....	16
Running the Installation Script .....	16
Creating the QAD CSS Database .....	18

- Set Up QAD CSS Environment Values . . . . . 18
- Create the QAD CSS Database . . . . . 19
- Load Sequence Values . . . . . 23
- Starting the Database Server . . . . . 24
  - Start the Database on UNIX . . . . . 24
  - Start the Database on Windows . . . . . 25
- Setting Up WebSpeed . . . . . 29
  - Set Up the WebSpeed Server on Windows . . . . . 29
  - Set Up the WebSpeed Broker on UNIX . . . . . 35
- Configuring QAD CSS . . . . . 37
  - Modify WebSpeed Startup Files . . . . . 37
  - Update QAD CSS Setup Files . . . . . 39
- Verifying QAD CSS Setup . . . . . 42
  - Start the Broker . . . . . 42
  - Verify Database Connection . . . . . 45
  - Verify PROPATH . . . . . 46
- Administering WebSpeed . . . . . 46
- Setting Up Web Server Virtual Directories . . . . . 47
  - Set Up a Virtual Directory for Apache . . . . . 47
  - Set Up a Virtual Directory for IIS . . . . . 48
- Generating a WebSpeed Error File . . . . . 48
- Compiling QAD CSS Source Code . . . . . 49
- Completing Installation Setup . . . . . 51
  - Set QAD CSS Directory Paths . . . . . 51
  - Set the Default Data Source . . . . . 53
  - Configure Settings in QAD CSS . . . . . 53
  - Update MFG/PRO for Credit Card Processing . . . . . 56
- Connecting to MFG/PRO . . . . . 57
- Final Steps . . . . . 58

**Chapter 3 Upgrading QAD CSS . . . . . 59**

- Overview . . . . . 60
  - Upgrade Summary . . . . . 60
  - Prior to Upgrading . . . . . 60

Installing New QAD CSS Media .....	61
Creating the QAD CSS Database .....	62
Set Up QAD CSS Environment Values .....	63
Create the QAD CSS Database .....	64
Starting the Database Server .....	66
Start the Database on UNIX .....	67
Start the Database on Windows .....	68
Modifying the QAD CSS Setup .....	72
Converting the Database .....	72
Run the In-Place Conversion .....	72
Run the Dump/Load Conversion .....	74
Verifying QAD CSS Setup .....	78
Starting the Broker .....	78
Verify Database Connection .....	80
Verify PROPATH .....	81
Administering WebSpeed .....	81
Generating a WebSpeed Error File .....	82
Compiling QAD CSS Source Code .....	83
Completing Conversion Setup .....	85
Set QAD CSS Directory Paths .....	85
Configure Settings in QAD CSS .....	87
Update MFG/PRO for Credit Card Processing .....	90
Connecting to MFG/PRO .....	91
Final Steps .....	92

<b>Index .....</b>	<b>93</b>
--------------------	-----------





# About This Guide

*About QAD CSS* 2

*Other QAD CSS Documentation* 2

*QAD Web Site* 3

*Conventions* 4

## About QAD CSS

QAD Customer Self Service (QAD CSS) is a Web-based storefront application designed to work with QAD's MFG/PRO system. It lets you extend your MFG/PRO system to the Web in support of either business-to-business (B2B) order entry or business-to-customer (B2C) order entry.

QAD CSS features include:

- Supports rapid integration and implementation, using a cost-effective approach and flexible Web technology
- Lets you easily model your own business processes without invasive code changes
- Style sheets that let you easily customize the user interface
- Lets your customers enter orders through a browser that updates MFG/PRO in real time
- Lets your customers check their order status, credit history, and inventory levels
- Automatically generates e-mails based on rules that you define

## Other QAD CSS Documentation

This guide includes instructions for installing QAD CSS on UNIX, Linux, and Windows platforms, as well as configuring the product to communicate with MFG/PRO.

These instructions are for the QAD CSS system administrator who is installing the QAD CSS database and is familiar with the UNIX operating system, the Microsoft Windows operating system, Progress software, and networking as necessary. The system administrator should also be familiar with MFG/PRO installation and administration.

For details on how to implement QAD CSS, see *Implementation Guide: QAD Customer Self Service*.

For details on how to use the product in day-to-day operations, see *Administration Guide: QAD Customer Self Service*.

## QAD Web Site

The QAD Web site provides a wide variety of information about the company and its products. You can access the Web site at:

<http://www.qad.com>

For QAD CSS users with a QAD Web account, product documentation is available for viewing or downloading at:

<http://support.qad.com/>

**Important** Before you start the installation, make sure you have the most recent version of this document.

You can register for a QAD Web account by accessing the Web site and clicking the Accounts link at the top of the screen. Your customer ID number is required. Access to certain areas is dependent on the type of agreement you have with QAD.

Most user documentation is available in two formats:

- **Portable document format (PDF).** PDF files can be downloaded from the QAD Web site to your computer. You can view them with the free Adobe Acrobat Reader. A link for downloading this program is also available on the QAD Web site.
- **HTML.** You can view user documentation through your Web browser. The documents include search tools for easily locating topics of interest.

Features also include an online solution database to help QAD CSS users answer questions about setting up and using the product. Additionally, the QAD Web site has information about training classes and other services that can help you learn about QAD CSS.

## Conventions

### Typographic Conventions

This document uses the text or typographic conventions listed in the following table.

<b>If you see:</b>	<b>It means:</b>
monospaced text	A command or file name.
<i>italicized</i> <i>monospaced text</i>	A variable name for a value you enter as part of an operating system command; for example, <i>YourCDROMDir</i> .
indented command line	A long command that you enter as one line, although it appears in the text as two lines.
<b>Note</b>	Alerts the reader to exceptions or special conditions.
<b>Important</b>	Alerts the reader to critical information.
<b>Warning</b>	Used in situations where you can overwrite or corrupt data, unless you follow the instructions.

### UNIX and Windows Conventions

This document supports the installation of QAD CSS for both UNIX and Windows platforms. Some steps are unique to a particular platform and are documented in separate sections and marked as UNIX or Windows only. In steps that are common to UNIX and Windows, UNIX file and path conventions are used when needed. If you are installing on the Windows platform, substitute the drive letter and path conventions for your operating system.

# Installation Overview

This chapter includes an overview of the QAD Customer Self Service (QAD CSS) product architecture and various deployment options. It then provides details needed to prepare for installation.

*Configuration Overview*    **6**

*Deployment Options*    **7**

*Upgrading to a New Version*    **10**

*Prerequisites*    **10**

*Preparing to Install*    **11**

## Configuration Overview

QAD CSS is designed as an *n*-tier application using Progress WebSpeed supported by several other technologies:

- HTML
- DHTML
- XML
- JavaScript
- Progress 4GL

▶ See “Deployment Options” on page 7.

The product is constructed in multiple layers that can be deployed on different tiers—or platforms—based on client-server architecture and scalability requirements.

Each layer has specific responsibility for handling an aspect of QAD CSS functionality and is differentiated based on the functional services it provides and the technology used to create it. The layers are:

- User interface (UI) layer. This layer presents and collects information that interacts with the user interface. It is written using HTML, Progress SpeedScript, and JavaScript. The UI layer creates the main container for the QAD CSS application and works with the UI business rule layer to dynamically generate page content when requested.

The UI layer ensures that the JavaScript and style sheets are included. In this context, JavaScript validates UI data entry. Additionally, the UI layer controls the overall placement of UI elements.

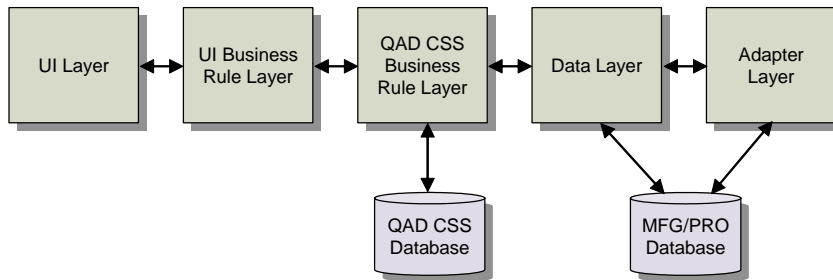
- UI business rule layer. This layer, written using WebSpeed, interacts with the UI layer and the application business rule layer (ABRL). It controls requests for data and data submission to the ABRL. It also controls dynamic creation of page content.

The UI business rule layer includes three base components:

- One that works with the UI layer to provide the base dynamic content
- A component that provides the default customizable UI generations for the product registry
- A UI extension component, where user modification to dynamic content takes place

- Application business rule layer (ABRL). The primary function of this layer, written in Progress 4GL, is to process data requests, as well as to perform QAD CSS business rule processing. It interacts with the UI business rules layer and data layer using a series of APIs that pass information and directives between the two layers. To satisfy these requests, the ABRL interacts with the data layer, adapter layer, and the QAD CSS database.
- Data layer. This layer provides a set of centralized procedures for retrieving and navigating through sets of records. The data layer also provides common procedures for updating the MFG/PRO database that include the necessary change control processes required to maintain stateless applications.
- Adapter layer. This layer controls access to the MFG/PRO database and code.

Figure 1.1 illustrates the QAD CSS layer architecture.



**Fig. 1.1**  
QAD CSS Layer  
Architecture

## Deployment Options

QAD CSS can be deployed in various configurations ranging from locally hosted to enterprise-wide options. In planning your deployment, you should consider these major factors:

- Your MFG/PRO configuration.
- The Web server and its platform. QAD CSS can work with most major Web servers; supported operating systems include Windows, Sun Solaris, IBM AIX, HP-UX, Compaq UNIX Tru64, SCO UnixWare 7, and Linux.

- Progress WebSpeed. WebSpeed includes separate components to support single-machine or distributed implementation.
- QAD CSS. Based on such factors as performance, you can implement all the components of QAD CSS—static Web files, dynamic HTML, business rules, adapter rules, QAD CSS database—on a single machine, or spread them across several. When your environment includes a Progress AppServer, each QAD CSS component can reside on a different tier of the enterprise network.

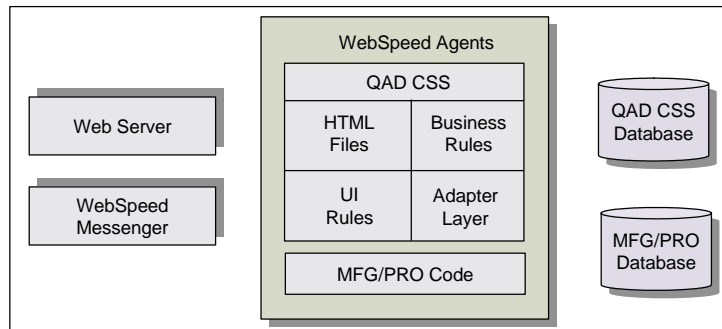
## Deployment Examples

This installation guide assumes that you are installing all QAD CSS components on a single server. If you want to distribute components, this section also illustrates distributed deployment featuring Web server installation on a separate machine.

### Simple Deployment

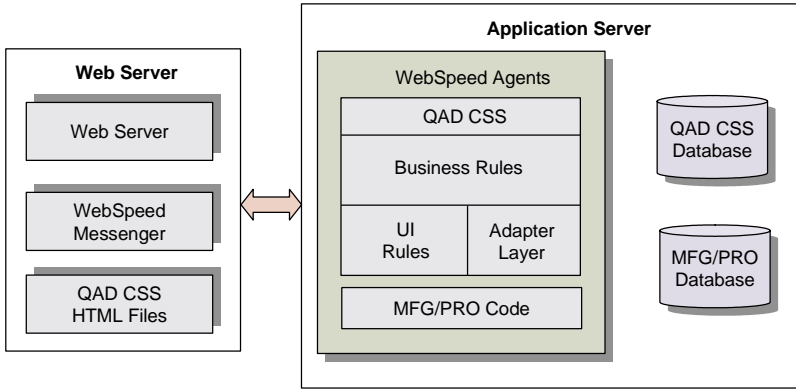
The simplest deployment of QAD CSS is to put all the components on the same server. This method is highly efficient, as well as easy to implement and maintain. However, it does not let you apply the kind of security typically required when users access an application over the Internet. For this reason, it is most often used to create development environments. Figure 1.2 illustrates an example of a simple deployment.

**Fig. 1.2**  
Simple Deployment  
of QAD CSS



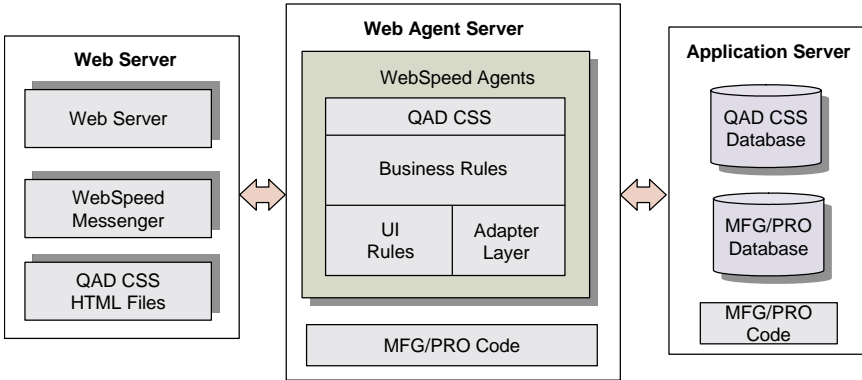
### Distributed Deployment

A more common deployment involves separating the Web server from the rest of the product. It is still very efficient for low- to medium-load situations, and is also relatively easy to implement and maintain. Figure 1.3 illustrates an example of a distributed deployment.



**Fig. 1.3**  
Distributed  
Deployment of  
QAD CSS

Another common example of a distributed implementation is to have the production MFG/PRO database on another platform. This offers more scalability, and—depending on the speed and network configuration of the database server—can improve performance. Figure 1.4 illustrates an example of this type of deployment.



**Fig. 1.4**  
Distributed  
Deployment of  
QAD CSS with  
Separate Database

## Upgrading to a New Version

▶ See “Upgrading QAD CSS” on page 59.

If you are converting to the current QAD CSS version from a prior version, you can either do an in-place conversion or a dump and load. The in-place requires less time; you load the new schema and administrative data directly into your existing QAD CSS database. The dump and load method preserves your old database; you create a new QAD CSS database and load schema and data into it.

In either case, you install the new QAD CSS code, update the database (existing or new), configure the revised QAD CSS environment, and compile. If you are upgrading your MFG/PRO version or Progress version at the same time, additional steps are required.

All instructions for either upgrade method are included in Chapter 3, “Upgrading QAD CSS,” on page 59. For upgrades, use Chapter 3 instead of Chapter 2.

## Prerequisites

### Hardware and Networking Requirements

Your system should meet the following basic requirements:

- Access to the Internet.
- Support for the TCP/IP and UDP protocols. The platforms that WebSpeed supports provide built-in support for these protocols.
- At least 150 MB of free space for the QAD CSS application.

### Software Requirements

You should have the following software elements installed and configured before you install QAD CSS:

- MFG/PRO, version eB2 or eB2.1

If you plan to use QAD CSS with MFG/PRO and Trade Management (TrM), the following product combinations have been certified:

- MFG/PRO eB2 SP8, TrM 2.6 SP1
- MFG/PRO eB2.1 SP2, TrM 2.7

For a TrM installation, you must also download and install ECO P2YY.

- Progress 4GL, version 9.1D or higher including:
  - Latest Progress version-specific patches
  - Sufficient Progress licenses for your database deployment method
- Progress WebSpeed, version 3.1D or higher
- A Web server that supports one of the following interfaces:
  - ISAPI; for example, Microsoft Internet Information Server (IIS), version 3.x and 4.x
  - NSAPI; for example, Netscape Enterprise or Fast Track Server, Version 3.x
  - CGI 1.1; for example, Apache 2.0
- To use the browser-based editor in WebSpeed version 3.1C, Microsoft Internet Explorer version 5.0 or later or Netscape Navigator 4.5 or later

**Note** If you plan to implement credit card processing, which is required for a B2C order-entry scenario, your Web server must have SSL installed and implemented.

## Preparing to Install

Before you begin the installation process, make sure you know and write down the information in Table 1.1.

Item	Your Setting	Default Value
QAD CSS Install Directory		/qadcss
QAD CSS Database Directory		/qadcss/database
Web Server Host or IP Address		
Web Server Directory		
Web Server Port		
Progress Install Directory		

**Table 1.1**  
Installation  
Information

**Important** Make sure you identify a valid port for your Web server that is not being used by other applications.

**Note** References are made throughout this document to the Progress and WebSpeed documentation. Progress documentation is available online at:

<http://www.progress.com/products/documentation/index.ssp>

## Installation Directories

Table 1.2 lists the directory naming convention used to reference locations that vary for each installation.

**Table 1.2**  
Installation  
Directories

Directory Component	Description
<i>CSSInstallDir</i>	The root directory where QAD CSS is installed on your system.
<i>CSSDbDir</i>	The directory location of the QAD CSS database.
<i>ProgressInstallDir</i>	The root directory where Progress and WebSpeed are installed on your system.
<i>WebServerDir</i>	The directory location of the Web server software.

Table 1.3 lists the components included in the compressed files and summarizes their purpose.

**Table 1.3**  
QAD CSS  
Components

Directory Component	Content Description
database	QAD CSS database.
defs/eng	English language data definition files and data files used to create the QAD CSS database.
defs/xx	Non-English language data files where xx refers to the two-letter MFG/PRO language code.
demo	Data you can use to add a sample catalog to illustrate the storefront.
demo/defs.css	QAD CSS data.
demo/defs.qad	MFG/PRO data.
demo/items	Images for the catalog.
mfgpro/eB2/xx	Service-pack specific directories for MFG/PRO code changes required for credit-card processing.
qadcass	Multiple subdirectories with core product files.
qadcass/appstart.p	Additional optional startup options.
qadcass/appstart.pf	Additional optional startup options.

Table 1.3 — QAD CSS Components — (Page 1 of 3)

Directory Component	Content Description
qadcoss/Compme3.1.html	Default compiler program.
qadcoss/qadcoss.ini	QAD CSS configuration file.
qadcoss/qadcoss.pf	Default start parameters for WebSpeed agents.
qadcoss/startexp.p	Variable setup file.
qadcoss/ systemunavailable.html	Error file template for WebSpeed errors.
qadcoss/css	Subdirectories with QAD CSS program files.
qadcoss/css/ad	Administrative programs.
qadcoss/css/adr	Administrative report programs.
qadcoss/css/br	Browser programs.
qadcoss/css/ca	Feedback and FAQ programs.
qadcoss/css/cc	Credit card programs.
qadcoss/css/cl	License clearance programs.
qadcoss/css/ext	Extend layer programs.
qadcoss/css/he	Help maintenance programs.
qadcoss/css/lg	Log-in programs and programs used to implement the B2C order module.
qadcoss/css/lib	Common libraries.
qadcoss/css/messages	Error message program for serious errors.
qadcoss/css/op	Order processing programs.
qadcoss/css/opr	Order processing report programs.
qadcoss/css/qad qadcoss/css/mfg	Programs that directly interface with MFG/PRO database. /qad is for eB2, /mfg is for eB2.1 implementations.
qadcoss/css/rep	Replication templates for populating items. <b>Note:</b> Catalog Load and Customer Load are the preferred methods for loading this data.
qadcoss/css/sys	System programs and base report programs.
qadcoss/css/tools	Utility programs.
qadcoss/css/tt	Temp table definitions used with all programs.
qadcoss/images	QAD CSS default images.
qadcoss/images/eng	Images for the English language.
qadcoss/images/xx	Images for non-English languages; xx refers to the MFG/PRO language code.

Table 1.3 — QAD CSS Components — (Page 2 of 3)

Directory Component	Content Description
qadcass/images/items	Images for items in the catalog. Initially empty.
qadcass/images/oe_icons	Images for action icons. Initially empty.
qadcass/logs	WebSpeed server logs. Empty when created.
qadcass/scripts	Java scripts used by QAD CSS.
qadcass/scripts/eng_msg	English-based JavaScript messages.
qadcass/scripts/xx_msg	JavaScripts for non-English languages where <i>xx</i> refers to the MFG/PRO language code.
qadcass/scripts/menu	Menu JavaScripts.
qadcass/styles	Default cascading stylesheets used by QAD CSS.
qadcass/temp	QAD CSS temporary files. Empty when created.
qadcass/temp/email	Used to process e-mail events.
qadcass/tools	Template and sample files.
qadcass/upload	Workspace for loading customers and catalogs during implementation.
qadcass/web	WebSpeed agent extension files.
qadcass/web/objects	WebSpeed files for Progress 9.1D.
qadcass/web/objects.91c	WebSpeed files for Progress 9.1C.
utils_ms	Sample scripts for use on Windows systems.
utils_ux	Sample scripts for use on UNIX systems.

Table 1.3 — QAD CSS Components — (Page 3 of 3)

# Installing QAD CSS

Use the instructions in this chapter to install and configure QAD CSS on a UNIX, Linux, or Windows platforms.

<i>Overview</i>	<b>16</b>
<i>Running the Installation Script</i>	<b>16</b>
<i>Creating the QAD CSS Database</i>	<b>18</b>
<i>Starting the Database Server</i>	<b>24</b>
<i>Setting Up WebSpeed</i>	<b>29</b>
<i>Configuring QAD CSS</i>	<b>37</b>
<i>Verifying QAD CSS Setup</i>	<b>42</b>
<i>Administering WebSpeed</i>	<b>46</b>
<i>Setting Up Web Server Virtual Directories</i>	<b>47</b>
<i>Generating a WebSpeed Error File</i>	<b>48</b>
<i>Compiling QAD CSS Source Code</i>	<b>49</b>
<i>Completing Installation Setup</i>	<b>51</b>
<i>Connecting to MFG/PRO</i>	<b>57</b>
<i>Final Steps</i>	<b>58</b>

## Overview

Use the instructions in this chapter to install and configure QAD CSS on a UNIX, Linux, or Windows platform.

▶ See *Implementation Guide: QAD Customer Self Service*.

Based on how you plan to use the product, you can adjust various configuration options after you begin using QAD CSS. After completing the installation and preliminary configuration process, test the new installation to verify that your MFG/PRO environment communicates data correctly with QAD CSS.

### Set Permissions (UNIX only)

For UNIX installations, make sure the installation user has write and execute permissions for the target installation directories. QAD recommends creating a user `mfg` in the group `qad`. This should already have been done as part of the MFG/PRO installation.

## Running the Installation Script

- 1 On UNIX systems, mount the CD-ROM. On Windows, place the CD in a CD-ROM drive.

Example UNIX commands are listed in Table 2.1.

**Table 2.1**  
UNIX CD Drive  
Mount Commands

Hardware	Mount Command
Sun	<code>volcheck cdrom</code>
HP	<code>/etc/mount -F cdfs /dev/dsk/YourCDDevice /cdrom</code>
Digital	<code>mount -r -o noversion -t cdfs /dev/YourCDDevice /cdrom</code>
AIX	<code>smitty mountfs</code> Then select file system, directory, and file system type ( <code>cdarfs</code> ).
Linux	<code>mount /dev/hdb /mnt/cdrom</code> Where <code>/hdb</code> could be <code>hdc</code> or <code>hdd</code> among other possibilities.
All others	Refer to your operating system documentation or vendor for requirements to mount a CD-ROM. You may be able to type <code>man mount</code> to determine the correct command.

**Note** Copying the distribution files from the CD to a temporary directory on disk can increase extraction speed.

- 2 Launch a command window and change directories to the `install` directory on the CD:

```
cd /install
```

- 3 Launch the installation script in that directory:

```
./install.ksh
```

For Windows, launch `install.exe`.

- 4 A welcome screen displays. Press Enter. Use Table 2.2 to enter the appropriate values for script execution.

**Table 2.2**  
Install Script Steps

Step	User Values
License agreement	Yes
Install log file	Accept default or enter a new location and name
Create <code>instcss.ini</code> ?	Yes
QAD CSS installation directory	Default is <code>/css</code>
For what language?	Simplified Chinese (ch) Castilian Spanish (cs) Dutch (du) French (fr) German (ge) Italian (it) Japanese (jp) Latin Spanish (ls) Portuguese (po) Traditional Chinese (tw) English (eng)
Install summary	Yes
File extraction	None
Progress directory	Your Progress install directory
Windows: icon folder name	Default is CSS 4.1.4
Script end	None

**Note** At the end of the script, the name and location of the installation log file display. Open the log file in a text editor to check for errors.

## Creating the QAD CSS Database

The QAD CSS install includes the QAD installation, conversion, and configuration utility MFG/UTIL. You now use this program to input several QAD CSS configuration values and to create and populate the `qadcss` database with necessary system data.

### Set Up QAD CSS Environment Values

- 1 Launch MFG/UTIL from the `CSSInstallDir` using the following command:

```
./mfgutil
```

For Windows, launch MFG/UTIL from the icon on the Start menu.

- 2 Select CSS Setup from the Configure CSS menu. Use the following screen and values to update your QAD CSS configuration.

**Fig. 2.1**  
CSS Setup Screen

**Table 2.3**  
CSS Setup Fields

Field	Description
CSS Database Directory	This is <code>CSSInstallDir/database</code> by default.
CSS Install Directory	The <code>CSSInstallDir</code> defined during install.
Progress Install Directory	The Progress install directory as identified during the install.

Field	Description
MFG/PRO Install Directory	The <i>MFGPROInstallDir</i> for the MFG/PRO instance CSS will connect with.
WebServer Host Name	The server name or IP address of the Web server. This should also include a domain name. The <i>.qad.com</i> in the sample screen is the domain name.
WebSpeed Broker Name	The name of the broker you plan to use; this guide uses <i>qadcscs</i> as an example.
WebSpeed Broker Port	Any available port.

- 3 Choose OK to save the changes.

## Create the QAD CSS Database

- 1 Remaining in MFG/UTIL, select CSS Guided Setup from the Configure CSS menu.
- 2 In the Operation Set drop-down, select Create QAD CSS Database. The CSS Guided Setup steps display in the Operation screen.
- 3 Choose Run Set to start the set up.

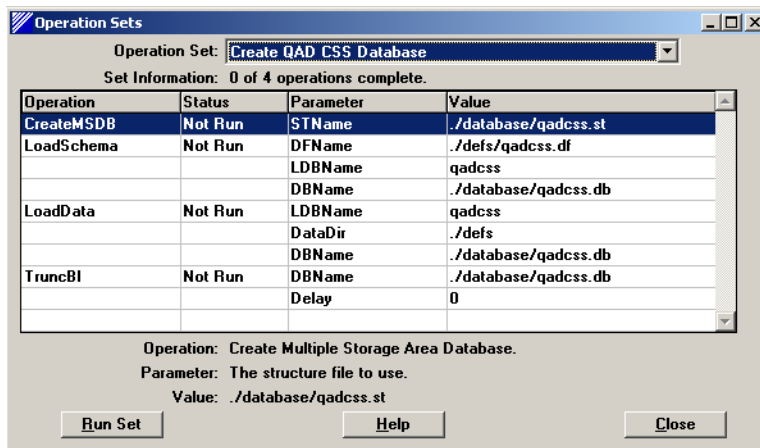


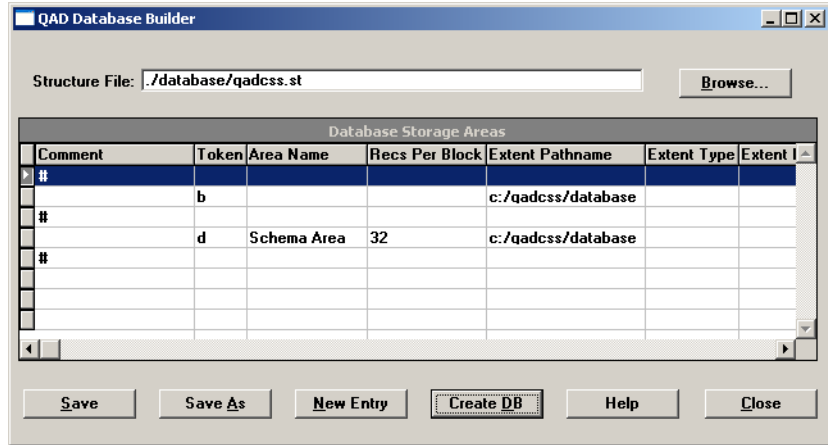
Fig. 2.2  
CSS Guided Setup  
Screen

**Note** The CSS Guided Setup provides standardized steps and default values for QAD CSS database creation and the loading of schema and data. Choosing Run Set launches these steps for you. You may want to edit the default values as you proceed.

See the Progress Database Administration Guide for details.

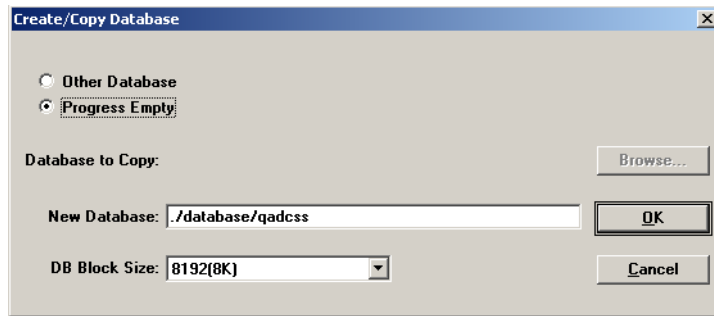
- The QAD Database Builder opens displaying the contents of qadc<sub>ss</sub>.st. This is the qadc<sub>ss</sub> database structure file. You can edit the structure file in this screen.

Fig. 2.3 qadc<sub>ss</sub> Structure File



- Choose Create DB to create the new database. You are then asked what database to copy to create the new database.

Fig. 2.4 Create/Copy the qadc<sub>ss</sub> Database



- The defaults are fine. The DB Block Size must be set to 8192(8K). Choose OK to create the database. A log window displays database creation progress. Choose Close to shut the log window and continue.

- 7 Once the database has been created, you are asked to connect to it.



Fig. 2.5  
Connect Database

- 8 Choose OK to connect. The Load Data Definitions screen displays.



Fig. 2.6  
qadcss Load Data  
Definitions Screen

- 9 The correct file name and location appear by default. Choose OK. The schema loads and a log window displays the progress. Choose Close to shut the log window and continue.
- 10 Choose Close in the QAD Database Builder.
- 11 The Connect Database screen appears again. Choose OK to reconnect to the database.

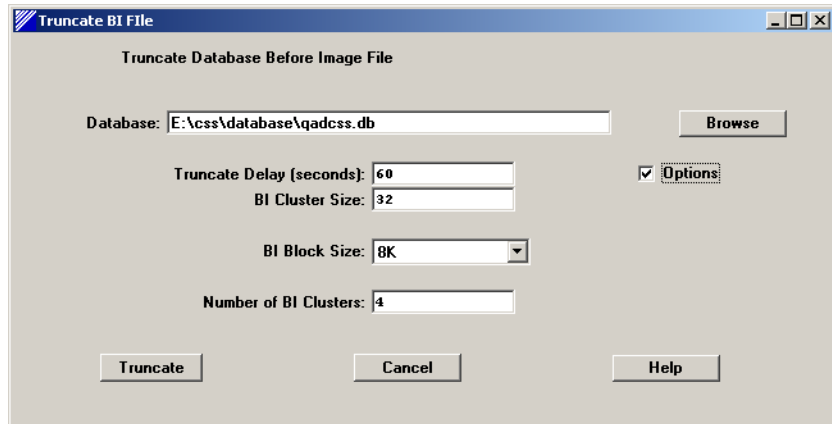
- 12 The Table Selection for Load screen displays. Data files exist for each table displayed. The data contained in the files is system data QAD CSS requires for operation. To start the data loads, choose OK.

Fig. 2.7  
qadcss Table  
Selection for Load



- 13 The Log Window shows load progress. Choose Close to continue.
- 14 The Truncate BI File screen displays with correct default values. Choose Truncate to continue.

Fig. 2.8  
qadcss Truncate BI  
File Screen



- 15 Choose Close in the log window to continue. You return to the Guided Setup window with each operation marked as Done.

## Load Sequence Values

One additional data file must be loaded, this time using Progress tools. The following instructions are for Windows tools. If you use a character interface, the instructions are the same with one exception: Progress calls the Data Administration tool in Windows the Data Dictionary in character.

- 1 From MFG/UTIL, select Progress Editor from the File menu.
- 2 In the Editor, choose Data Administration from the Tools menu.
- 3 In the Data Admin tool, select Connect from the Database menu. In the Connect Database screen, locate your `qadcss` database, and choose OK.
- 4 Select Sequences Current Values from the Load Data and Definitions submenu on the Admin menu.

**Important** In the Load Sequence Current Values, even if the correct file name `_seqvals.d` appears, use the Files button to correctly locate and select the file as shown.



**Fig. 2.9**  
Load Sequence  
Current Values  
Screen

- 5 Choose OK to complete the load.
- 6 After the load, select Disconnect from the Database menu. You are asked to confirm. Choose Yes to continue.
- 7 Exit the Admin tool and the Procedure Editor using the File|Exit menu options.

## Starting the Database Server

The QAD CSS database needs to be run in multi-user mode to allow connections from multiple WebSpeed agents. Depending on the server configuration and Progress and WebSpeed versions used, a TCP connection to the database may be required.

**Important** Make sure you execute this sequence successfully. The QAD CSS database must be started before you continue with the installation procedure.

▶ See Chapter 5, “Starting Up and Shutting Down,” in the *Progress Database Administration Guide and Reference* for details.

Example scripts for starting and stopping databases are included in the following directories:

- `utils_ms`: utilities formatted for use with Windows
- `utils_unix`: utilities formatted for use with UNIX and Linux

If a TCP connection is used, QAD recommends that the port number be documented in the `services` file. This is usually `/etc/services` on UNIX systems, `C:\winnt\system32\drivers\etc\services` on Windows. See the server documentation for information.

The following is an example entry in the `/etc/services` file:

```
#EXAMPLE ENTRY:
# <service_name>      <portnumber/protocol>  #<description>
qadcSSDB              5661/tcp                # QAD CSS DB
```

### Start the Database on UNIX

Examples of database start and stop scripts include:

- `startdb`

```
DLC=ProgressInstallDir; export DLC;
$DLC/bin/proserve CSSDbDir/qadcSS -L 1000 -B 5000
-S qadcSSDB -N TCP;
```

- `stopdb`

```
DLC=ProgressInstallDir; export DLC;
$DLC/bin/proshut CSSDbDir/qadcSS -by
```

The following output is produced when the database is started using the sample `startdb` script:

```
./startdb
PROGRESS Version 9.1C as of Thu Jun 7 10:03:59 EDT 2001
17:53:19 BROKER 0: Multi-user session begin. (333)
17:53:19 BROKER 0: Begin Physical Redo Phase at 320 . (5326)
17:53:20 BROKER 0: Physical Redo Phase Completed at blk 435 off
3894 upd 6970. (7161)
17:53:21 BROKER 0: Started for qadcSSDB using TCP, pid 24729.
(5644)
```

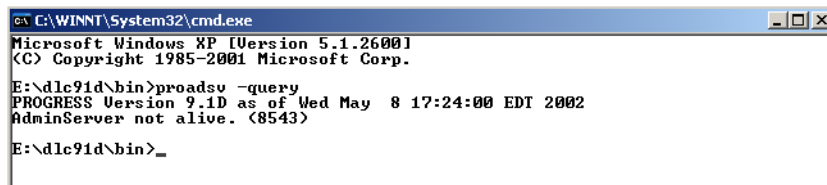
## Start the Database on Windows

Start the database servers on Windows in the Progress Explorer.

Depending on your specific Progress version, system configuration, and operating system, the Progress Explorer navigation and display layout may differ slightly from the following instructions. Refer to the Progress Explorer online help for detailed help.

- 1 Verify that the AdminServer process is running.
  - If the software is located on a Windows server, open a command window and enter the following:

```
ProgressInstallDir\bin\proadsv -query
```



```
C:\WINNT\System32\cmd.exe
Microsoft Windows XP [Version 5.1.2600]
(C) Copyright 1985-2001 Microsoft Corp.

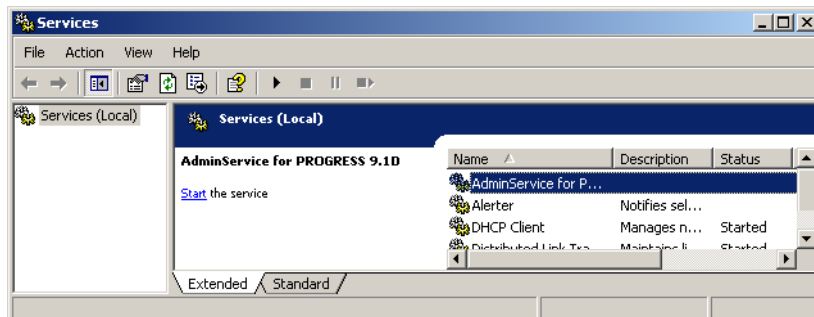
E:\d1c91d\bin>proadsv -query
PROGRESS Version 9.1D as of Wed May 8 17:24:00 EDT 2002
AdminServer not alive. (8543)

E:\d1c91d\bin>_
```

**Fig. 2.10**  
Dead Admin Server  
Message

If the AdminServer is not running, open Settings|Control Panel|Services from the Windows Start button. Then, select the AdminService for Progress 9.1 and click Start.

**Fig. 2.11**  
Starting the Admin  
Server in the  
Windows Services  
Manager



- If the software is located on a UNIX server, run the following command on that server:

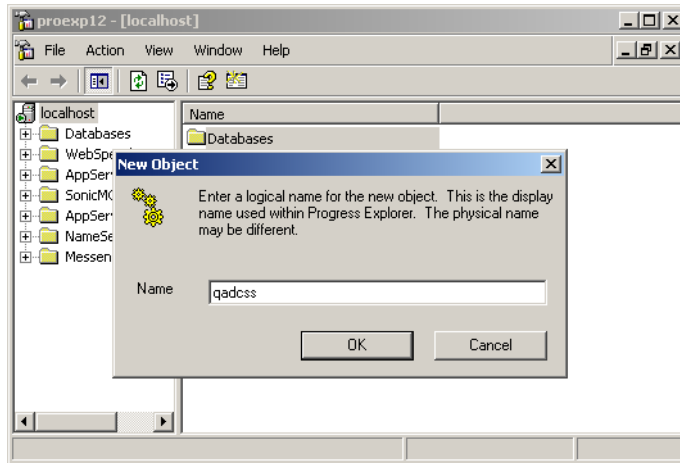
```
ProgressInstallDir\bin\proadsv -query
```

If the AdminServer is not running, start it using the following command:

```
ProgressInstallDir\bin\proadsv -start
```

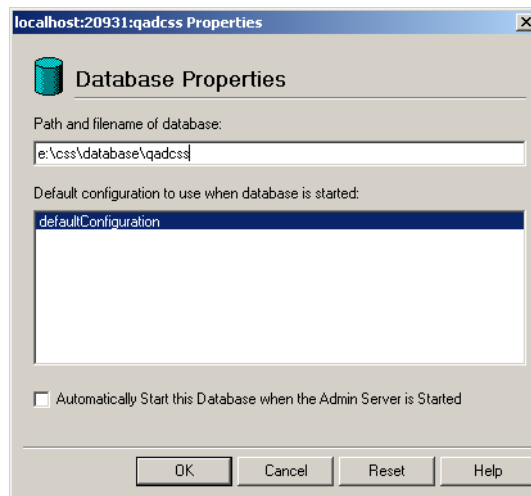
- 2 From the Windows Start menu, select Programs|Progress|Progress Explorer Tool.  
The localhost AdminServer and any others defined on your system display.
- 3 Verify that the correct AdminServer is on the list. (If the AdminServer is on the system from which you are running Progress Explorer, it is shown as localhost.) If the correct server is not on the list, consult the Progress documentation for instructions on adding a new server service.
- 4 Right-click the server where QAD CSS is installed and select Connect. Enter the user ID and password to administer the service; by default this is the user's three-letter initials and blank.

- 5 Right-click Databases in the right window and select New. Enter the name for the database as `qadcss` and click OK.



**Fig. 2.12**  
Adding the qadcss Database

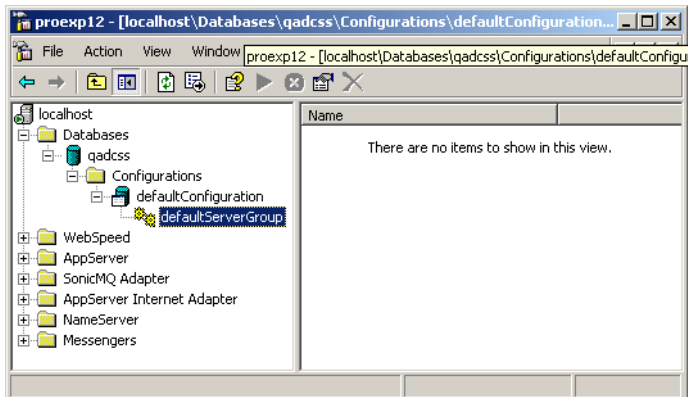
- 6 Database Properties displays. Enter the complete path to the QAD CSS database in `CS$DbDir` and click OK.



**Fig. 2.13**  
Database Properties

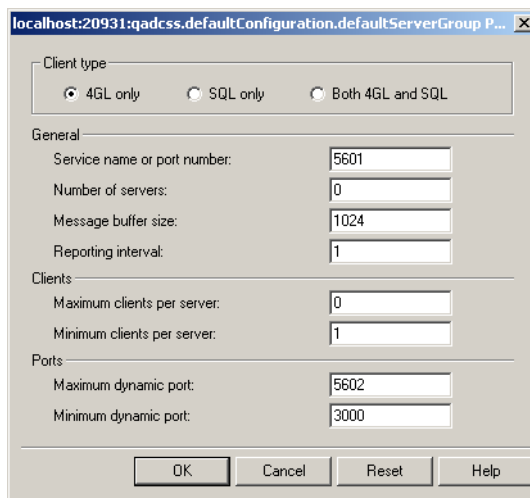
- 7 In the left window, expand the service, the database just created, the configuration, and defaultConfiguration.

**Fig. 2.14**  
Expanded  
defaultConfiguration  
Node

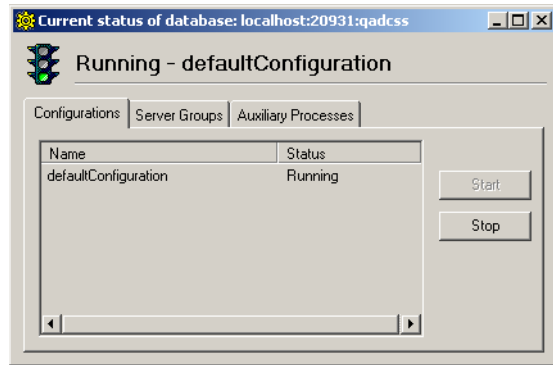


- 8 Right-click defaultServerGroup and choose Properties. In the dialog box:
  - a Select 4GL Only.
  - b Enter a free service port number in the Ports section. (If necessary, contact the system administrator for a number.)
  - c Click OK.

**Fig. 2.15**  
Database  
Configuration  
Properties



- 9 Right-click the database name in the left window and choose Start.
- 10 Right-click the database again and choose Status. The database should be running.



**Fig. 2.16**  
Database Running

## Setting Up WebSpeed

This section describes how to create a new WebSpeed broker for QAD CSS. If you are installing on Windows, use the Progress Explorer. For UNIX, if you have a Windows machine network-connected to the UNIX server, also use the Progress Explorer, since this method is easier and less error prone.

For UNIX-only systems, follow the steps in “Set Up the WebSpeed Broker on UNIX” on page 35.

**Note** This procedure assumes you are installing all QAD CSS components on one server.

### Set Up the WebSpeed Server on Windows

**Additional Resource:** Review the “Configuring WebSpeed on Windows” chapter in the Progress *WebSpeed Installation and Configuration Guide*.

This section provides instructions for setting up the WebSpeed Server instance using the Progress Explorer, which runs on Windows machines only. You can use these instructions to set up:

- A Windows server
- A UNIX server using a network-connected Windows machine

In the following instructions, use the Progress Explorer to modify the WebSpeed section of the `ubroker.properties` configuration file. This file is located in the `properties` subdirectory below the Progress installation directory.

- 1 Make sure the AdminServer is started.
- 2 Start the Progress Explorer from the Windows Start button. The Progress Explorer window displays.
- 3 If you are configuring a remote machine, use the following instructions to add an icon for the remote machine to the Progress Explorer. If you are configuring the Progress servers for this machine, use the localhost icon.
  - a Click on Progress Explorer and then select Action|Add Progress Server. The Server Properties window displays.
  - b Complete the General tab in the Server Properties window using the following table as a guide:

Field	Description
Server	Enter the machine name of the server you want to configure.
User	Enter the user name under which you want to log in to the remote machine. If you are configuring a remote UNIX machine, log in as a user with root-level permissions. If you are configuring a remote Windows machine, log in as a user with administrator permissions.
Password	Enter the password for the user that you are using to log in to the remote machine.

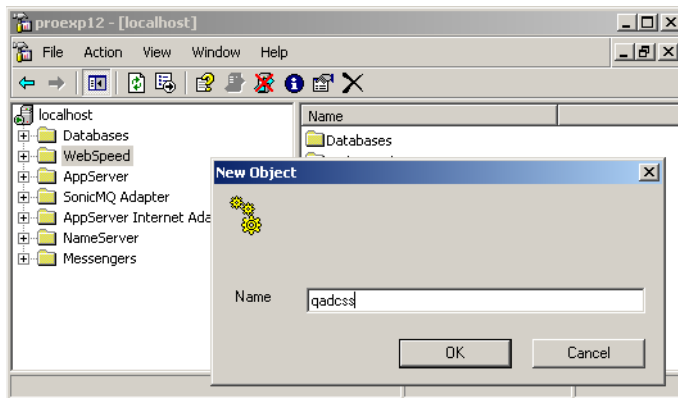
- c Click OK to continue.
- 4 In the Progress Explorer window, right-click the server icon for the machine on which you want to configure the WebSpeed server instance. Choose Connect.

- 5 If you are configuring a remote machine, you are prompted for a user name and password. Use the same name and password that you specified in step 3.

The Progress Explorer connects to the AdminServer process running on the machine where you are configuring the WebSpeed instance. A connection is indicated by a green arrow in the machine icon.

## Set Up the WebSpeed Broker

- 1 Once you have connected to the remote or localhost server machine, click on the server name. Several folders display. Right-click the WebSpeed folder and choose New.
- 2 In the New Object window, enter the name you want to use for the WebSpeed broker. The following instructions use `qadcscs` as an example.



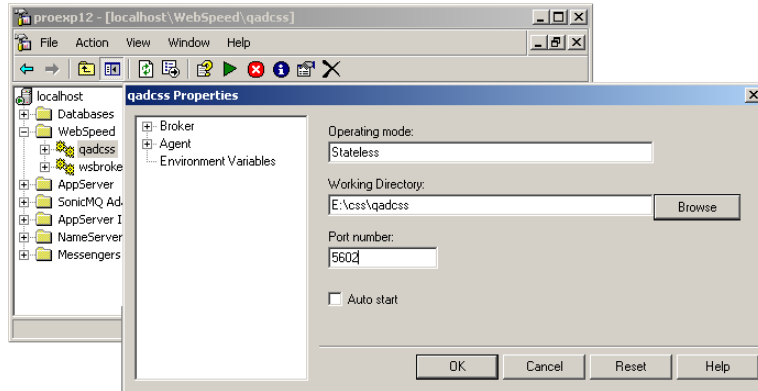
**Fig. 2.17**  
Adding a  
WebSpeed Broker

When ready, click OK to continue.

- 3 Expand the WebSpeed directory; right-click the broker that was just created and choose Properties. A Properties dialog box displays.
  - a For Working Directory, click Browse and select the `CSSInstallDir\qadcscs` directory.
  - b Enter a free port number (verified as available by the system administrator).

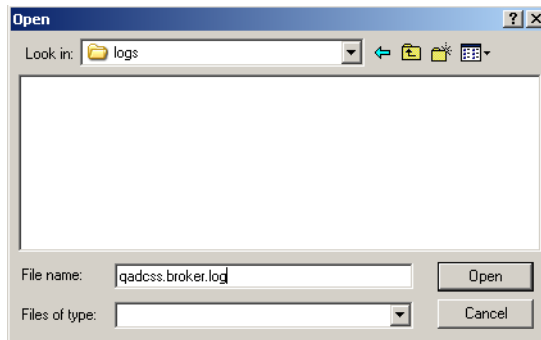
- c Leave the Operating Mode set to Stateless and Auto start set to No.

Fig. 2.18  
WebSpeed Broker  
Properties



- 4 Still in the Properties screen, expand the Broker by clicking its name in the left side of the Properties window and select Logging Setting to display a new set of options:
  - a Click Browse to find the logs directory under the *CSSInstallDir\qadcsc*. Select the logs directory and in the Open dialog box, enter the file name *BrokerName.broker.log*.

Fig. 2.19  
Entering the Broker  
Log File Name



- b Click Open.
- c Choose Error Only in the Broker logging level drop-down list.

- d Uncheck Append to broker log file.

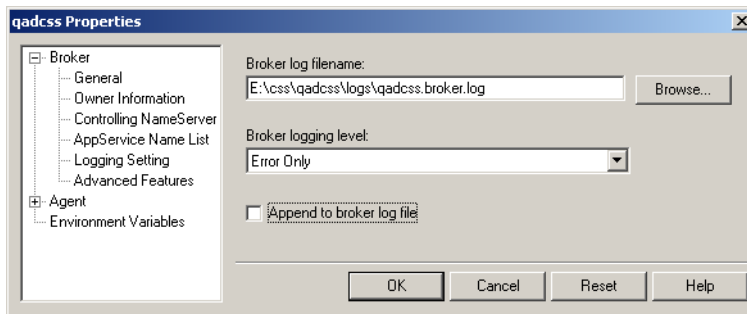


Fig. 2.20  
Broker Log  
Settings

- 5 Remaining in Properties, if you are not using the NameServer, click ControllingNameServer under the Broker. In the NameServer properties, uncheck Register with NameServer.

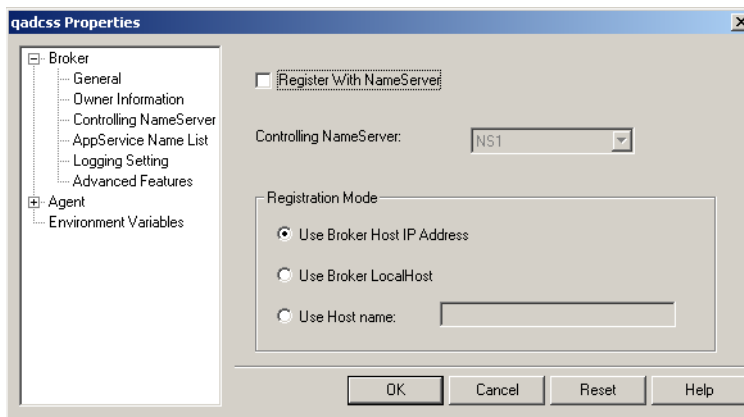
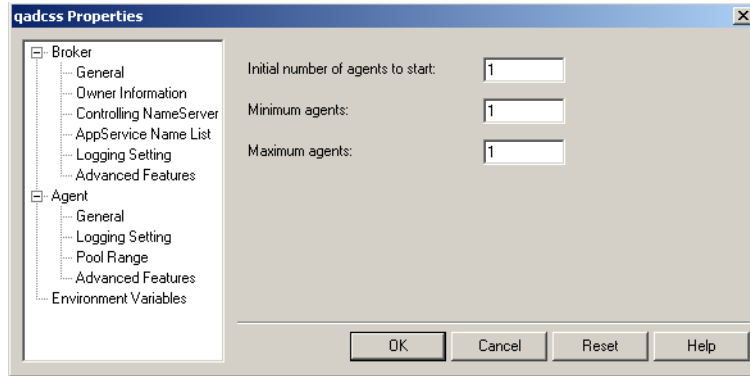


Fig. 2.21  
Unregistering the  
NameServer

- 6 In Properties, expand Agent, select Logging Setting, and repeat step 4, specifying `BrokerName.server.log` as the file name.

- 7 Click Pool Range under the Agent section. Set each value to 1 and click OK.

Fig. 2.22  
Pool Range  
Settings



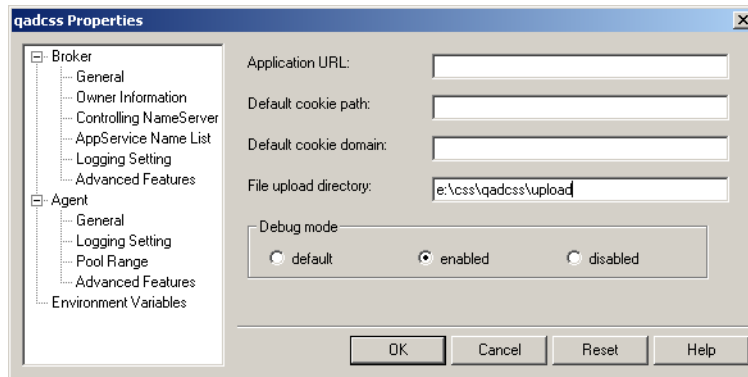
See “Register Your Serial Number” on page 55.

**Note** After you register your QAD CSS clearance code, return to this section and update the pool settings based on the licensed number of agents.

- 8 In the Properties screen, select Advanced Features under Agent, and enter the File Upload Directory. The path should be:

`CSSInstallDir\qadcsc\upload`

Fig. 2.23  
Entering the File  
Upload Directory



- 9 Choose OK to complete the configuration.

## Set Up the WebSpeed Broker on UNIX

The next step generates a WebSpeed broker for your QAD CSS implementation. This broker maintains the connection between your QAD CSS and MFG/PRO applications. The broker definition is added to the Progress `ubroker.properties` file. The first step is to generate a sample broker definition that you can then edit and append to the original file.

- 1 In MFG/UTIL, select Generate Sample `ubroker.properties` File from the Configure CSS menu. The generate screen displays.

Fig. 2.24  
Sample ubroker  
Screen

- 2 Accept the defaults except for the broker port number. Enter a valid port number that is not in use.
 

**Note** Leave the agents all set to 1. Later, after implementation, you will need to reset these to the number of agents needed for your production environment.
- 3 Choose OK to generate the sample. A message displays showing the path and file name for the sample file. The file is written to:

```
CSSInstallDir\qadcsc-ubroker.properties
```

The file should look something like the following:

```
[UBroker.WS.qadcscs]
  appserviceNameList=qadcscs
  brokerLogFile=CSSInstallDir\qadcscs\logs\qadcscs.broker.log
  srvrLogFile=CSSInstallDir\qadcscs\logs\qadcscs.server.log
  description=qadcscs
  environment=qadcscs
  controllingNameServer=NS1
  portNumber=3601
  PROPATH=CSSInstallDir\qadcscs
  uuid=6fcd1c8e29b18fd3:55af5:ff79d89dd3:-8000
  workDir=CSSInstallDir\qadcscs
  fileUploadDirectory=CSSInstallDir\qadcscs\upload
  defaultService=0
  groupName=
  initialSrvrInstance=1
  maxSrvrInstance=1
  minSrvrInstance=1
  srvrAppMode=Development
  srvrDebug=Disabled
  srvrLoggingLevel=1
  srvrLogAppend=0
  brkrLogAppend=0
  brkrLoggingLevel=1
  userName=
  srvrStartupParam=-p web\objects\web-disp.p -weblogerror
  -pf CSSInstallDir\qadcscs\qadcscs.pf
  #
```

- 4 The original `ubrokers.properties` file is located in your `ProgressInstallDir\properties`. Make a backup of the original and open the original.
- 5 Cut and paste or copy the sample text into the original `ubrokers.properties` file on the line following the `[UBroker.WS]` definition.
- 6 Save your changes.

## Configuring QAD CSS

Use these procedures to update the QAD CSS startup files; then verify that the modified files work correctly.

### Modify WebSpeed Startup Files

This section describes how to modify the following WebSpeed program files to support QAD CSS:

- `web-disp.p`
- `web-util.p`

For reference, example files are provided in:

- `CSSInstallDir/qadcsc/web/objects` for Progress 9.1D
- `CSSInstallDir/qadcsc/web/objects.91C` for Progress 9.1C

**Important** Do not use an example file. Instead, update the files you copy from your WebSpeed implementation. This ensures that you have updated the latest version of the file if there have been other changes to it, such as a Progress service pack.

The content of the files has changed between Progress 9.1C and 9.1D. These instructions assume you are editing the files associated with 9.1D. If you are working with 9.1C, make exactly the same changes, but the file context may be slightly different.

**Tip**  
Search for QAD CSS in the sample files to find where changes are needed.

Follow these steps to update the WebSpeed programs:

- 1 Copy the existing `web-disp.p` and `web-util.p` files located in the `ProgressInstallDir/src/web/objects` directory to the `CSSInstallDir/qadcsc/web/objects` directory.
- 2 Make the following modifications to `web-disp.p` and `web-util.p` in `CSSInstallDir/qadcsc/web/objects`. The changes are marked with QAD CSS MODIFICATION. Refer to the sample files if needed.

**Important** Do not modify the files in the Progress installation directory.

## web-disp.p Modifications

```
{ src/web/method/cgiarray.i NEW } /* standard WS cgiarray.i: vars */
{ src/web/method/tagmap.i NEW } /* standtagmap.i: TT tagmap */
{ src/web/method/webutils.i NEW }

/* Dummy variable for logical assign. */
DEFINE VARIABLE lDummy AS LOGICAL NO-UNDO.

/***** QAD CSS MODIFICATION *****/
/**/ { css/lib/lib_sys_globalui.i new global }
/**/ { css/lib/lib_startex.i }
/***** QAD CSS MODIFICATION END *****/
```

```
IF lStateAware THEN
  {&MANUAL-WSEU-INCREMENT}

/***** QAD CSS MODIFICATION *****/
/**/ IF NOT startex ("qadcss.ini",yes) THEN WAIT-FOR WEB-NOTIFY OF
DEFAULT-WINDOW EXCLUSIVE-WEB-USER.
/***** QAD CSS MODIFICATION END *****/

/* Wait for a web-request to come in */
WAIT-FOR-BLOCK:
```

## web-util.p Modifications

```
&GLOBAL-DEFINE WEB-UTIL_P TRUE /* lets proto.i know where to find
functions */

{ src/web/method/cgidefs.i } /* Basic CGI variables */
{ src/web/method/cgiarray.i } /* Extended CGI array variables */
{ src/web/method/tagmap.i } /* Tagmap Temp-Table definition */

/***** QAD CSS MODIFICATION *****/
/**/ DEFINE STREAM myrptstream.
/**/ DEFINE VARIABLE sttime AS INTEGER NO-UNDO.
/**/ DEFINE VARIABLE edtime AS INTEGER NO-UNDO.
/**/ DEFINE VARIABLE vhClean AS HANDLE NO-UNDO.
/**/ DEFINE VARIABLE vhFind AS HANDLE NO-UNDO.
/**/ DEFINE VARIABLE isQADDBUp AS LOGICAL NO-UNDO.
/**/ OUTPUT STREAM myrptstream TO logs/runtime.log.
/**/ PUT STREAM myrptstream UNFORMATTED "LOG OPENED " TODAY SKIP.
/**/ OUTPUT STREAM myrptstream CLOSE.
/***** QAD CSS MODIFICATION END *****/
```

```

EXECUTE-BLOCK:
  DO ON ERROR UNDO EXECUTE-BLOCK, LEAVE EXECUTE-BLOCK
  ON ENDKEY UNDO EXECUTE-BLOCK, LEAVE EXECUTE-BLOCK
  ON STOP UNDO EXECUTE-BLOCK, LEAVE EXECUTE-BLOCK
  ON QUIT , LEAVE EXECUTE-BLOCK:

/***** QAD CSS MODIFICATION *****/
/**/ DELETE WIDGET-POOL "exDataPool" NO-ERROR.
/**/ CREATE WIDGET-POOL "exDataPool" PERSISTENT.
/**/ ASSIGN sttime = etime.
/***** QAD CSS MODIFICATION END *****/

/* Assumes state-aware support is on. Run run-web-object in
   web/objects/stateaware.p. */
/***** QAD CSS MODIFICATION *****/
/**/ Check whether "qaddb" database is connected,
/**/ If it is not connected, kill standard CSS adapter super
procedures.#/
/**/
/**/ assign isQADDBUp = connected("qaddb") NO ERROR.
/**/ if not isQADDBUp then do:
/**/ run unloadStandardAdapters NO-ERROR.
/**/ end.
/***** QAD CSS MODIFICATION END *****/
IF glStateAware THEN RUN SUPER (pcFileName).
ELSE RUN VALUE(pcFilename) NO-ERROR.

/***** QAD CSS MODIFICATION *****/
/**/ ASSIGN edtime = etime.
/**/ OUTPUT STREAM myrptstream TO logs/runtime.log APPEND.
/**/ PUT STREAM myrptstream UNFORMATTED pcFileName " "
string((edtime - sttime) / 1000) SKIP.
/**/ OUTPUT STREAM myrptstream CLOSE.
/***** QAD CSS MODIFICATION END *****/

END.

/* Did the code run okay? Also trap for compiler error here,
/*since some code may run a program directly without running it
/*through run-web-object */

```

## Update QAD CSS Setup Files

Edit the following QAD CSS files to make them specific to your installation:

- qadcass.pf
- qadcass.ini

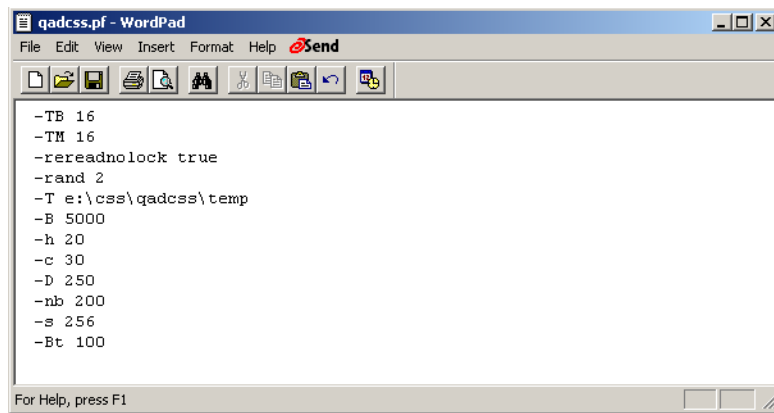
### qadcass.pf

Verify the QAD CSS startup parameter file `qadcass.pf` in `CSSInstallDir/qadcass`. It should point to the directory where the system creates temporary Progress files using the `-T` parameter. For example:

```
CSSInstallDir/qadcass/temp
```

Also verify that the `-rereadnolock` parameter is set to `true`. This value instructs the system to read values directly from database tables rather than from stored memory. This ensures that various WebSpeed agents get the most current value when data changes.

**Fig. 2.25**  
Modifications to  
`qadcass.pf`



```
qadcass.pf - WordPad
File Edit View Insert Format Help Send
- TB 16
- TM 16
- rereadnolock true
- rand 2
- T e:\css\qadcass\temp
- B 5000
- h 20
- c 30
- D 250
- nb 200
- s 256
- Bt 100
For Help, press F1
```

### qadcass.ini

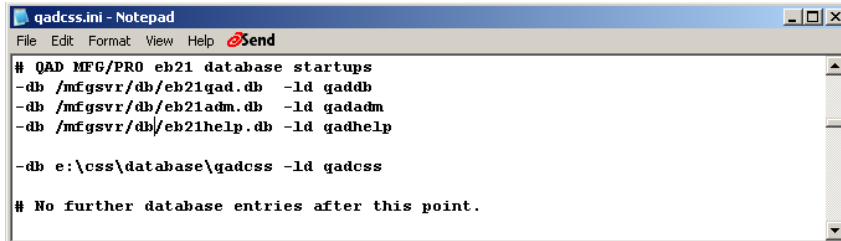
QAD CSS gets its database connections and `PROPATH` settings from a file called `qadcass.ini`. Follow these steps to update this file:

- 1 Make a backup copy of the existing `qadcass.ini` file located in `CSSInstallDir/qadcass`.
- 2 Modify the original file based on the following considerations:
  - a Database connections

Initially, the `qadcass` database is the only database required. Integration with MFG/PRO is defined in a later step.

▶ See “Connecting to MFG/PRO” on page 57.

The following example shows the database connections portion of `qadcsc.ini`.



```

qadcsc.ini - Notepad
File Edit Format View Help Send
# QAD MFG/PRO eb21 database startups
-db /mfgsvr/db/eb21qad.db -ld qadddb
-db /mfgsvr/db/eb21adm.db -ld qadadm
-db /mfgsvr/db/eb21hlp.db -ld qadhlp

-db e:\css\database\qadcsc -ld qadcsc

# No further database entries after this point.

```

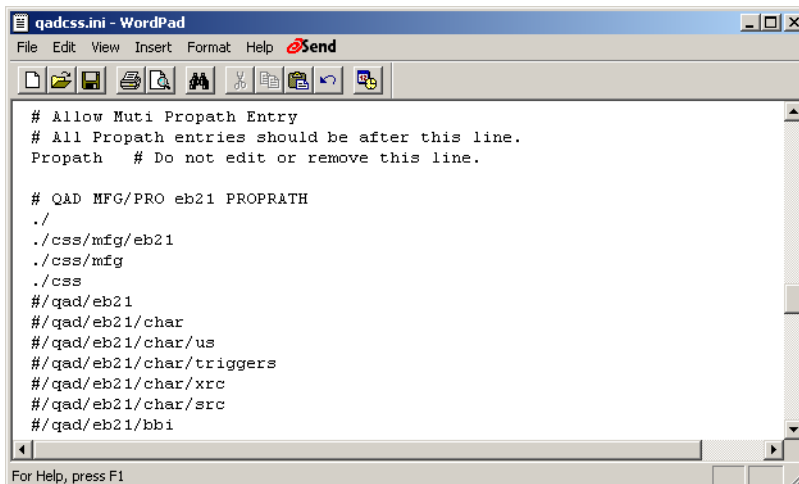
**Fig. 2.26**  
Database  
Connection Entry  
in `qadcsc.ini`

## b PROPATH

Initially, the minimum required PROPATH for a QAD CSS install is shown below. Integration with MFG/PRO is defined in a later step.

The following example shows the QAD CSS PROPATH portion of `qadcsc.ini` for an eB2.1 implementation.

▶ See “Connecting to MFG/PRO” on page 57.



```

qadcsc.ini - WordPad
File Edit View Insert Format Help Send
# Allow Muti Propath Entry
# All Propath entries should be after this line.
Propath # Do not edit or remove this line.

# QAD MFG/PRO eb21 PROPRATH
./
./css/mfg/eb21
./css/mfg
./css
#/qad/eb21
#/qad/eb21/char
#/qad/eb21/char/us
#/qad/eb21/char/triggers
#/qad/eb21/char/xrc
#/qad/eb21/char/src
#/qad/eb21/bbi

```

**Fig. 2.27**  
PROPATH Entry  
for MFG/PRO  
eB2.1 in `qadcsc.ini`

Note that for eB2.1, the paths required are:

```
./
./css/mfg/eB21
./css/mfg
./css
```

For eB2, the required paths are:

```
./
./css/qad/eB2
./css/qad
./css
```

If you install patches or make customizations, you should update the `PROPATH` to include these directories before the `qadcscs` and `qadcscs/css` directories.

**Important** Only certified QAD CSS professionals should change the product name or product version. QAD CSS may not function properly if the product name or product version entries are modified.

## Verifying QAD CSS Setup

Use the procedures in this section to verify that the modifications to the setup files have been done correctly.

### Start the Broker

When any modifications are made to either `web-disp.p` or `qadcscs.ini`, the QAD CSS WebSpeed broker must be restarted.

### Starting the Broker in Windows

In Windows environments, you can use Progress Explorer to stop and restart the broker. Right-click the QAD CSS service name under the WebSpeed subdirectory and choose the appropriate command.

- 1 Right-click the broker name in the left window and choose Start.  
The startup process may take several minutes.

- 2 Right-click the broker name again and choose Status.
  - a On the Summary tab, confirm that the Broker Status is Active.
  - b On the Details tab, confirm that State is Available for all agents.

### Starting the Broker in UNIX

Figure 2.28 illustrates the command and display sequence for restarting the WebSpeed broker in UNIX. The commands to start or restart the broker are based on those in the furnished example scripts.

◆ See “Configuring QAD CSS” on page 37.

The WebSpeed broker may need some time to start. Monitor the startup process by performing a query. Check the server log for this WebSpeed environment for appropriate startup messages.

**Note** The WebSpeed agent must have a state of Available in order to continue with the installation.

**Fig. 2.28**  
Sample Verification  
Process

```

CSSInstallDir# ./stop
PROGRESS Version 9.1C as of Thu Jun 7 10:03:59 EDT 2001

Connecting to Progress AdminServer using rmi://localhost:20931/
Chimera (8280)
Searching for brokerName (8288)
Connecting to brokerName (8276)
Shut down brokerName (8277)

CSSInstallDir# ./start
PROGRESS Version 9.1C as of Thu Jun 7 10:03:59 EDT 2001

Connecting to Progress AdminServer using rmi://localhost:20931/
Chimera (8280)
Searching for brokerName (8288)
Connecting to brokerName (8276)
Starting brokerName. Check status. (8296)

CSSInstallDir#
CSSInstallDir# ./status
PROGRESS Version 9.1C as of Thu Jun 7 10:03:59 EDT 2001

Connecting to Progress AdminServer using rmi://localhost:20931/
Chimera (8280)
Searching for brokerName (8288)
Connecting to brokerName (8276)

Broker Name           : brokerName
Operating Mode        : Stateless
Broker Status         : ACTIVE
Broker Port           : brokerPort
Broker PID            : 2740
Active Agents         : 1
Busy Agents           : 0
Locked Agents        : 0
Active Agents         : 1
Active Clients (now, peak) : (0, 0)
Client Queue Depth (cur, max) : (0, 0)
Total Requests        : 0
Rq Wait (max, avg)    : (0 ms, 0 ms)
Rq Duration (max, avg) : (0 ms, 0 ms)

PID  State      Port  nRq   nRcvd  nSent  Started  Last Change
02680 AVAILABLE 03202 000000 000000 000000 [start] [last change]

```

## Verify Database Connection

Use the following steps to access the WebSpeed Workshop and confirm that the databases are connected.

- 1 Using a Web browser, go to the WebSpeed Workshop by entering the following URL:

```
http://webServer/webServerScriptsDirectory/wspd_cgi.sh/  
WService=brokerName/workshop
```

**Note** The *webServerScriptsDirectory* is typically your Web server /cgi-bin directory.

**Note** In Windows environments, *cgiip.exe* is typically specified rather than *wspd\_cgi.sh*.

A screen similar to the following should display.



- 2 Click the Databases link from the menu.

A drop-down list displays the connected databases.

**Important** The QAD CSS database must be connected in order to continue with the installation.

## Verify PROPATH

Because you must update the PROPATH as part of the configuration process, you should use WebSpeed Workshop to validate your changes.

- 1 From the WebSpeed Workshop, click the ProPath menu item.  
The resulting screen displays the WebSpeed PROPATH.
- 2 Confirm that these values match the entries in the `qadcss.ini` file.

▶ See “PROPATH” on page 41.

## Administering WebSpeed

To help ease the task of WebSpeed/QAD CSS administration, the installation CD provides example scripts, demonstrating how to start, stop and monitor the WebSpeed brokers and AdminServer. The files are in the following directories:

- `utils_ms`: utilities formatted for use with Windows
- `utils_ux`: utilities formatted for use with UNIX and Linux

Example scripts include:

- `startadm`

```
DLC=ProgressInstallDir; export DLC
$DLC/bin/proadsv -start
```

- `start`

```
DLC=ProgressInstallDir; export DLC
$DLC/bin/wtbman -i brokerName -start
```

- `stop`

```
DLC=ProgressInstallDir; export DLC
$DLC/bin/wtbman -i brokerName -stop
```

- `status`

```
DLC=ProgressInstallDir; export DLC
$DLC/bin/wtbman -i brokerName -query
```

For more information on testing a WebSpeed configuration, see Chapter 8.13, “Testing Your Configuration,” in the Progress *WebSpeed Installation and Configuration Guide*.

For more information on `proadsv` or `wtbman`, see Chapter 8.2.3, “WebSpeed Command-Line Utilities,” in the Progress *WebSpeed Installation and Configuration Guide*.

## Setting Up Web Server Virtual Directories

Each Web server may have different requirements. This section includes some steps for configuring the Apache Tomcat server and Microsoft’s Internet Information Server (IIS).

In a multi-tier deployment, the `/images`, `/scripts`, and `/styles` directories located in `CSSInstallDir/qadcss` are moved to a directory on the Web server. You need to create an alias for this directory.

**Important** In a production environment, do not alias the full `CSSInstallDir` directory because this could create a serious security risk by making the entire source code freely available on the Web.

### Set Up a Virtual Directory for Apache

Follow these steps to allow the system to access QAD CSS using an Apache Web server:

- 1 Locate the `httpd` file in the `WebServerDir/conf` directory.
- 2 Locate the following section in this file:

```
Alias /icons/ "WebServerDir/icons"

<Directory "WebServerDir/icons">
    Options Indexes MultiViews
    AllowOverride None
    Order allow,deny
    Allow from all
</Directory>
```

- 3 Add the following lines after the code section displayed in the previous step:

```
Alias /qadcss/ "CSSWebDir/"

<Directory "CSSWebDir">
    Options Indexes MultiViews
    AllowOverride None
    Order allow,deny
    Allow from all
</Directory>
```

**Note** In this example, *CSSWebDir* is a directory containing just the images, scripts, and styles.

## Set Up a Virtual Directory for IIS

Follow these steps to allow the system to access QAD CSS using Microsoft's Internet Information Server (IIS):

- 1 From the Windows Start menu, select Settings|Control Panel.
- 2 Select Administrative Tools and then Internet Services Manager.
- 3 Right-click Default Web Site and choose New Virtual Directory.
- 4 Enter an alias name to access this Web virtual directory. Use the same naming conventions as for naming a directory; for example, qadcss.
- 5 Enter the path to the directory that contains the `/images`, `/scripts`, and `/styles` subdirectories.

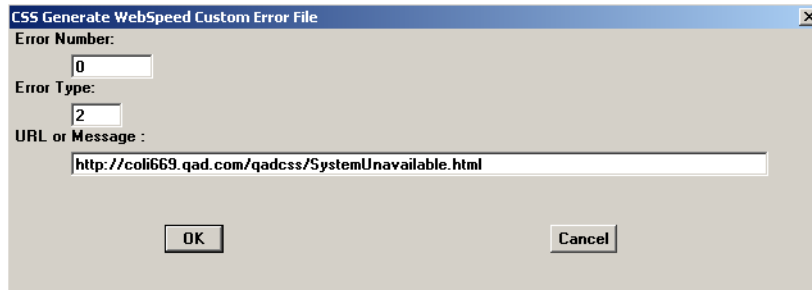
## Generating a WebSpeed Error File

You now create a text file that redirects WebSpeed errors to a URL.

When the MFG/PRO server has gone down for some reason, QAD CSS can still be used as a stand-alone product. However, when a buyer attempts to check-out, a message will appear that the system is currently unavailable. The text file substitutes a user-friendly message that the system is unavailable for the WebSpeed error that would normally display.

These steps create a text file, `wsCusErr.txt` in the QAD CSS install directory. After the text file is created, you must manually move it to the working directory used by the Progress CGI script.

- 1 Launch MFG/UTIL.
- 2 Select Generate WebSpeed Custom Error File from the Configure CSS menu. Use the following screen and values to create the custom error message.



**Fig. 2.29**  
Generating a  
Custom WebSpeed  
Error File

Leave the Error Number set to 0 and the Error Type set to 2. The URL should contain the QAD CSS host name and domain (coli669.qad.com in the example), the QAD CSS install directory (qadcss), and the SystemUnavailable.html page. This should all default in.

**Note** The host name and domain can include the Web server port number as well, as in coli669.qad.com:9999.

- 3 Choose OK to save your changes. The file is saved to your QAD CSS install directory.
- 4 Copy or move the file to your Progress work directory (WRKDIR). For example, c:\wrk in Windows or /tmp on UNIX.

## Compiling QAD CSS Source Code

Follow these steps to compile the QAD CSS source code from the WebSpeed Workshop:

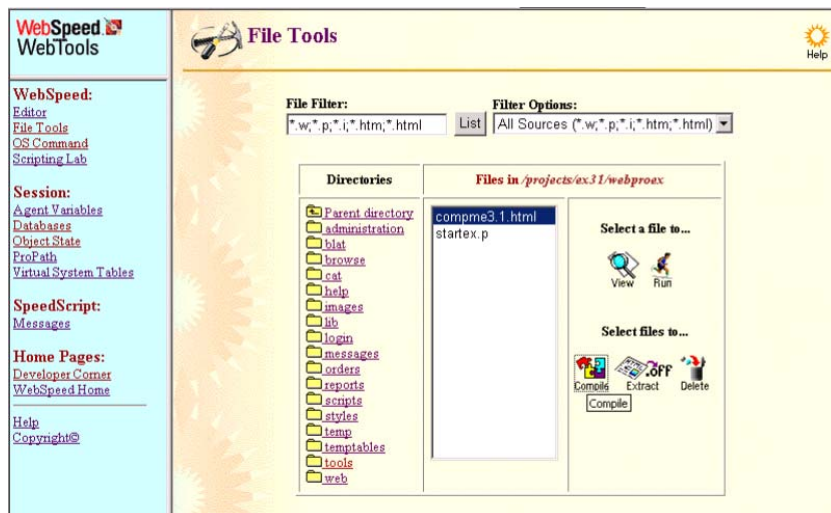
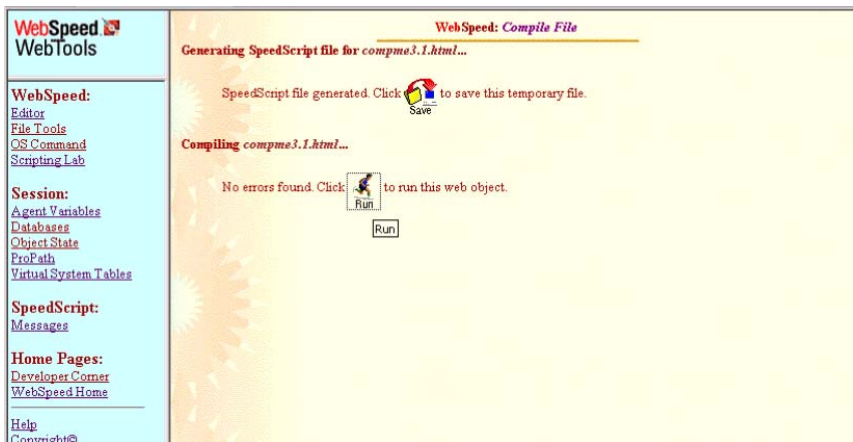
- 1 Using a Web browser, go to the WebSpeed Workshop by entering the following URL:

```
http://webServer/webServerScriptsDirectory/wspd_cgi.sh/  
WService=brokerName/workshop
```

**Note** The *webServerScriptsDirectory* is typically your Web server /cgi-bin directory.

**Note** In Windows environments, cgiip.exe is typically specified rather than wspd\_cgi.sh.

- 2 Select File Tools from the menu on the left.

3 Compile `compme3.1.html` in the WebSpeed Workshop.4 Run `compme3.1.html` from the post-compilation dialog.5 In Filter, enter `.html`. Highlight all files to be recompiled and click Compile.

**Note** Do not compile the `.html` files in the `tools` directory, such as `rp_rpt_template.html`. These files are intended to be used as samples for creating your own programs and contain code that may cause compile errors.

Typically, you compile the .html files only. When you are ready to move to a production environment, you can also compile the program files (.p). However, since these are loaded persistently, compiling them does not improve performance significantly.

The compilation process may take a few minutes.

- 6 Compile the two .w files in *CSSInstallDir/qadcsc/css/cl/*. In Filter, enter .w. Highlight all files to be recompiled and click Compile.

## Completing Installation Setup

This section describes other tasks required to complete the installation and configuration of QAD CSS. Use these instructions to:

- Set up directory paths to support a number of administrative functions.
- Set up system and order control maintenance features.

### Set QAD CSS Directory Paths

Before you can access the QAD CSS database, you must verify your system variables. Later, these variables can be changed from administrative functions on the QAD CSS menu. Use MFG/UTIL to set up paths for several images, scripts, and styles directories.

- 1 In MFG/UTIL choose Configure CSS|Setup Directory Paths.

The screenshot shows a dialog box titled "CSS Directories" with the following fields and values:

- CSS Image Path:** http://colif669.qad.com/qadcsc/images/
- CSS Script Path:** http://colif669.qad.com/qadcsc/scripts/
- CSS Style Path:** http://colif669.qad.com/qadcsc/styles/
- CSS Temporary Directory:** e:\css\qadcsc\temp\
- MFG/PRO Source Code Directory:** e:\eb2.1\us\
- QADCSS DB Name:** qadcsc

Buttons for "OK" and "Cancel" are located at the bottom of the dialog.

**Fig. 2.30**  
Set Directory Path  
Screen

▶ See the “System Control Maintenance” section in *Administration Guide: QAD Customer Self Service* for more information.

2 Accept the defaults or enter corrected values for:

*Image Path.* The virtual directory on the Web server where the QAD CSS images reside. For example, this directory can be defined as:

- An absolute URL (<http://www.server.com/images/>)
- A relative URL (</images/>)

*Script Path.* The virtual directory on the Web server where the QAD CSS JavaScript files reside. For example, this directory can be defined as:

- An absolute URL (<http://www.server.com/scripts/>)
- A relative URL (</scripts/>)

*Style Path.* The virtual directory on the Web server where the QAD CSS HTML style sheets reside. For example, this directory can be defined as:

- An absolute URL (<http://www.server.com/styles/>)
- A relative URL (</styles/>)

*Temporary Directory.* The directory identified in your `qadcscs.pf` file by the `-T` parameter.

*MFG/PRO Source Code Directory.* The location of MFG/PRO compiled code.

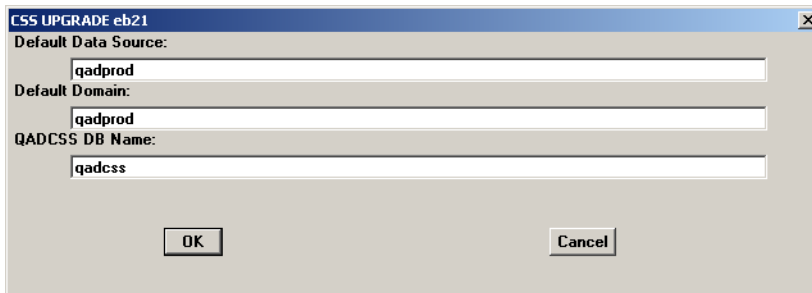
*QADCSS DB Name.* The QAD CSS database name. No extension is required.

Choose OK to save any changes and write the directories to WebSpeed.

## Set the Default Data Source

If you are implementing QAD CSS with MFG/PRO eB2.1, you must define a default data source in order to allow the initial system user to log into the system.

- 1 In MFG/UTIL, choose Assign Default Data Source|Domain from the Configure CSS menu.



**Fig. 2.31**  
Defining the  
Default Data  
Source

- 2 Enter a valid domain from your eB2.1 installation and enter an equivalent data source for QAD CSS.
- 3 Choose OK to save the changes.

## Configure Settings in QAD CSS

Use this section to configure a number of settings within the QAD CSS application.

- 1 Restart the WebSpeed agents.
- 2 Using a Web browser, enter the following URL to connect to the log-in page of QAD CSS:

```
http://webServer/webServerScriptsDirectory/wspd_cgi.sh/  
WService=brokerName/lg/lg_login.html
```

**Note** In Windows environments, `cgiip.exe` is typically specified rather than `wspd_cgi.sh`.

- 3 To log in, specify the default user ID and password, `demo` and `demoex`, respectively.

### Update System Control Settings

- 1 From the menu, select Administration|System Control|System Control.
- 2 Review the options to determine which should be changed to optimally configure the QAD CSS application. Initially, you can accept all defaults. However, note the following fields:
  - Temp Directory should reflect the appropriate path to the `/temp` directory that will be used by the application.
  - Extend to ERP should not be selected until MFG/PRO setup is complete.

### Update Registry Settings

Use System Registry Maintenance to specify a user ID and password that let QAD CSS access MFG/PRO.

- 1 From the menu, select Administration|System Registry Maintenance.
- 2 Update these registry values used when logging in to MFG/PRO:
  - QADUser, by default mfg
  - QADUPasswd, by default blank
  - QADUDomain, by default blank (required for eB2.1 only)
  - a Enter QADUser in the Search for field and click Search.
  - b Click the QADUser key to display the Detail Registry Editor.
  - c By default, this field is set to mfg. If this is not a valid user in the MFG/PRO system you will be accessing, change it now.
  - d Repeat these steps for QADUPasswd to secure this user with a password.
  - e Repeat again for QADUDomain, entering the default data source set up in “Set the Default Data Source” on page 53.

**Important** You must also set up the same user ID with the same password in MFG/PRO User Maintenance (36.3.18; 36.3.1 in eB2.1).

The system registry also includes numerous other settings that control how you use QAD CSS.

▶ See  
*Implementation  
Guide: QAD  
Customer Self  
Service.*

- 3 Update the value for the directory where JavaScript messages are stored.
  - a Enter js in the Search for field and click Search.
  - b Click the jsmsgDir key to display the Detail Registry Editor.
  - c Change the Key Value to `CSSInstallDir/qadcsc/scripts`.
  - d Click Save, then click Home.

### Generate Messages

- 1 From the menu, choose Administration|Messages|Error Message Maintenance.
- 2 Click the Generate button on the left side. This will compile a JavaScript file containing messages required by the system.
 

**Note** During use of the application, you need to do this whenever you add a new message of type JS or support for a new language.
- 3 Click Home to return to the main menu.

### Register Your Serial Number

- 1 Choose Administration|System Control|QAD CSS Clearance Code.
- 2 Enter the customer name as it appears on the license page included in your product package.
- 3 Enter the serial number as it appears on the license page.
- 4 Click submit. You are redirected to a secure server URL for registering your product. Depending on how your browser is configured, you may see several messages about security.
- 5 Click Yes to accept the terms of the license agreement.
- 6 The QAD CSS Clearance Code screen redisplay with information about your license, including the number of WebSpeed agents and the QAD CSS modules. Click Update to accept this information.

- 7 Leave QAD CSS running; you will return to the menu in the next procedure.

## Update MFG/PRO for Credit Card Processing

If you plan to implement credit-card processing, you must update your MFG/PRO installation with two programs and two data files. The required files are included on the QAD CSS installation media in MFG/PRO version and service-pack specific directories. For example, if you are using MFG/PRO eB2 SP3, use the files in *CSSInstallDir/MFGPRO/eB2/SP3*.

For complete details on implementing credit-card processing, see the chapter on B2C order processing in *Implementation Guide: QAD Customer Self Service*.

To implement these changes:

- 1 Locate the files for your MFG/PRO eB2 release and service pack on the CD.
- 2 Copy the files to your *MFGPROInstallDir*.
- 3 Create a text file named *csscomp.wrk*. It should contain a listing of the two *.p* files you copied, *soivpst1.p* and *sosoba.p*.
- 4 Start MFG/UTIL and use the *csscomp.wrk* compile list to compile the new files into destination directory *MFGPROInstallDir\xrc*.
- 5 When the compile completes, choose Database|Load Data into Database.
- 6 Connect to the admin database and choose OK. Locate the two data files you copied from the QAD CSS CD: *lbl\_mstr.d* and *lbl\_d\_det.d*.
- 7 When the tables display, make sure both are selected and choose OK. Press spacebar to close the window when the load completes and exit MFG/UTIL.

## Connecting to MFG/PRO

Use the procedures in this section to set up QAD CSS to work with MFG/PRO. In the following tasks, you:

- Update MFG/PRO parameter and startup settings.
- Connect to the MFG/PRO databases through QAD CSS.

You must modify the `qadcsc.ini` file to point to the correct MFG/PRO databases and source code. The easiest way to do this is to locate the `.pf` file currently being used to log in to MFG/PRO and copy the database connection statements from it to the `qadcsc.ini` file.

### 1 Modify the database connections in the `qadcsc.ini` file:

**Note** Be sure that the first database listed is the `qadddb` database, and use the logical database names shown below.

```
Database Connections # Do not edit or remove this line.
#All database connection entries should be after this line.

-db /projects/qadddb/eb2qad.db -ld qadddb
-db /projects/qadddb/eb2adm.db -ld qadadm
-db /projects/qadddb/eb2help.db -ld qadhelp
-db /CSSDbDir/qadcsc -ld qadcsc
```

### 2 Modify the `PROPATH` in the `qadcsc.ini` file for the version of MFG/PRO you are using. This sample is for MFG/PRO eB2:

```
# Allow Multi Propath Entry
# All Propath entries should be after this line.
Propath # Do not edit or remove this line.

./
/css/qad/eB2
/css/qad
/css
/MfgProInstallDir/
/MfgProInstallDir/us
/MfgProInstallDir/triggers
/MfgProInstallDir/xrc
/MfgProInstallDir/src
/MfgProInstallDir/bbi
```

**Important** For eB2.1 implementations, `/mfg` replaces `/qad` in the second and third entry:

```
./
/css/mfg/eB2.1
/css/mfg
/css
```

- 3 Return to QAD CSS and from the menu select Administration, then choose System Control Maintenance. Select Extend to ERP to enable communication with the MFG/PRO database.
- 4 Restart the QAD CSS service (in this document, qadcsc) by running the stop script then the start script on UNIX systems or using Progress Explorer in Windows.

**Note** View the *BrokerName.server.log* file in the */CSSInstallDir/qadcsc/logs* directory. Notice if any errors were logged and whether the following message displays:

```
lib/lib_sys_adapter1.p
```

- 5 Check the *CSSInstallDir/qadcsc/temp* directory to see if any files were generated. If so, review the most recent files with extensions *.log* and *.log.erp* to verify that log-in was successful.

## Final Steps

After you have successfully completed the installation and verified the setup, you should complete these final steps in your production environment:

In Progress Explorer, update the agent properties for the QAD CSS broker:

- 1 Click Advanced Features under the Agent section. Set the debug mode to disabled and click OK.
- 2 Click Pool Range under the Agent section. Set the value based on the licensed number of agents you have registered and click OK.
- 3 Complete QAD CSS implementation using *Implementation Guide: QAD Customer Self Service*.

# Upgrading QAD CSS

Use the instructions in this chapter to upgrade prior QAD CSS releases on UNIX, Linux, or Windows platforms to the current release.

<i>Overview</i>	<b>60</b>
<i>Installing New QAD CSS Media</i>	<b>61</b>
<i>Creating the QAD CSS Database</i>	<b>62</b>
<i>Starting the Database Server</i>	<b>66</b>
<i>Modifying the QAD CSS Setup</i>	<b>72</b>
<i>Converting the Database</i>	<b>72</b>
<i>Verifying QAD CSS Setup</i>	<b>78</b>
<i>Administering WebSpeed</i>	<b>81</b>
<i>Generating a WebSpeed Error File</i>	<b>82</b>
<i>Compiling QAD CSS Source Code</i>	<b>83</b>
<i>Completing Conversion Setup</i>	<b>85</b>
<i>Connecting to MFG/PRO</i>	<b>91</b>
<i>Final Steps</i>	<b>92</b>

## Overview

Use the instructions in this chapter to upgrade prior QAD CSS releases on UNIX, Linux, or Windows platforms to the current release.

There are two basic methods for upgrade: in-place and dump/load. In-place takes less time because the existing database and code is modified. The downside is that the prior database cannot be restored. Make a complete database backup prior to starting an in-place upgrade.

The second method is a traditional dump and load. Dump/load requires a dump from the existing database and a load into the new database. The prior database is preserved.

## Upgrade Summary

The steps required to upgrade QAD CSS are:

- Install the new media to your QAD CSS server.
- For dump/load only, create a new QAD CSS database.
- Start the new database server.
- Convert the database using either:
  - Dump/load steps
  - In-place steps
- Verify the QAD CSS setup.

If you upgraded your Progress or WebSpeed version you will also:

- Modify your WebSpeed setup.
- Configure QAD CSS.

## Prior to Upgrading

Make sure you take the following steps prior to upgrading:

- Back up your QAD CSS database.
- Save a copy of your `qadcss.ini` file.

## Installing New QAD CSS Media

Complete these steps for:

- In-Place
  - Dump/Load
- 1 On UNIX systems, mount the CD-ROM. On Windows, place the CD in a CD-ROM drive.

Example UNIX commands are listed in Table 3.1.

Hardware	Mount Command
Sun	<code>volcheck cdrom</code>
HP	<code>/etc/mount -F cdfs /dev/dsk/YourCDDevice /cdrom</code>
Digital	<code>mount -r -o noversion -t cdfs /dev/YourCDDevice /cdrom</code>
AIX	<code>smitty mountfs</code> Then select file system, directory, and file system type ( <code>cdrfs</code> ).
Linux	<code>mount /dev/hdb /mnt/cdrom</code> Where <code>/hdb</code> could be <code>hdc</code> or <code>hdd</code> among other possibilities.
All others	Refer to your operating system documentation or vendor for requirements to mount a CD-ROM. You may be able to type <code>man mount</code> to determine the correct command.

**Table 3.1**  
UNIX CD Drive  
Mount Commands

**Note** Copying the distribution files from the CD to a temporary directory on disk can increase extraction speed.

- 2 Launch a command window and change directories to the `install` directory on the CD:

```
cd /install
```

- 3 Launch the installation script in that directory:

```
./install.ksh
```

For Windows, launch `install.exe`.

- 4 A welcome screen displays. Press Enter. Use Table 3.2 to enter the appropriate values for script execution.

**Table 3.2**  
Install Script Steps

Step	User Values
License agreement	Yes
Install log file	Accept default or enter a new location and name
Create <code>instcss.ini</code> ?	Yes
QAD CSS installation directory	Default is <code>/css</code>
For what language?	Simplified Chinese (ch) Castilian Spanish (cs) Dutch (du) French (fr) German (ge) Italian (it) Japanese (jp) Latin Spanish (ls) Portuguese (po) Traditional Chinese (tw) English (eng)
Install summary	Yes
File extraction	None
Progress directory	Your Progress install directory
Windows: icon folder name	Default is CSS 4.1.4
Script end	None

**Note** At the end of the script, the name and location of the installation log file display. Open the log file in a text editor to check for errors.

## Creating the QAD CSS Database

Complete these steps for:

- Dump/Load

**Tip**  
If you are doing an in-place conversion, go to “Starting the Database Server” on page 66.

QAD CSS includes the QAD installation, conversion, and configuration utility MFG/UTIL. Use this program to input several CSS configuration values and to create and populate the new `qadcss` database with necessary system data.

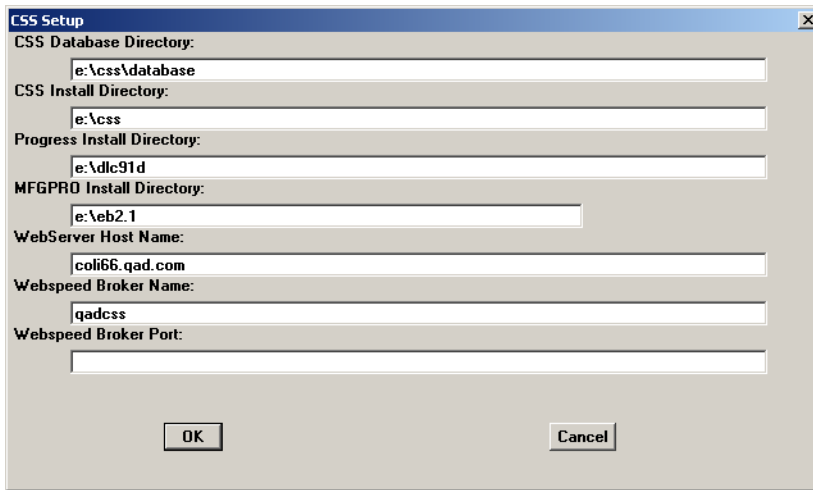
## Set Up QAD CSS Environment Values

- 1 Launch MFG/UTIL from the *CSSInstallDir* using the following command:

```
./mfgutil
```

For Windows, launch MFG/UTIL from the icon on the Start menu.

- 2 Select CSS Setup from the Configure CSS menu. Use the following screen and values to update your CSS configuration.



**Fig. 3.1**  
CSS Setup Screen

Field	Description
CSS Database Directory	This is <i>CSSInstallDir</i> /database by default.
CSS Install Directory	The <i>CSSInstallDir</i> defined during install.
Progress Install Directory	The Progress install directory as identified during the install.
MFG/PRO Install Directory	The <i>MFGPROInstallDir</i> for the MFG/PRO instance CSS will connect with.
WebServer Host Name	The server name or IP address of the Web server. This should also include a domain name. The .qad.com in the sample screen is the domain name.
WebSpeed Broker Name	The name of the broker you plan to use; this guide uses qadcsc as an example.
WebSpeed Broker Port	Any available port.

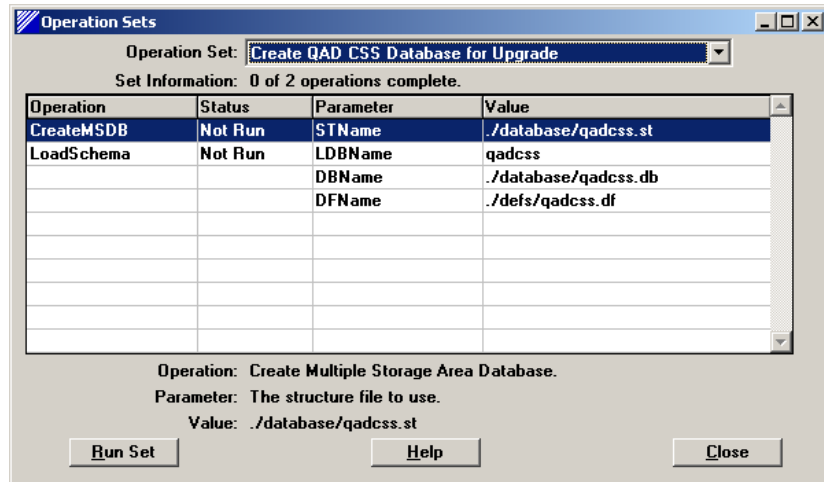
**Table 3.3**  
CSS Setup Fields

- 3 Choose OK to save the changes.

### Create the QAD CSS Database

- 1 Remaining in MFG/UTIL, select CSS Guided Setup from the Configure CSS menu.
- 2 In the Operation Set drop-down, select Create QAD CSS Database for Upgrade. The CSS guided setup steps display in the Operation screen.
- 3 Choose Run Set to start the set up.

**Fig. 3.2**  
CSS Guided Setup  
Screen



**Note** The CSS Guided Setup provides standardized steps and default values for CSS database creation and the loading of schema and data. Choosing Run Set launches these steps for you. You may want to edit the default values as you proceed.

▶ See the Progress Database Administration Guide for details.

- 4 The QAD Database Builder opens displaying the contents of qadcss.st. This is the qadcss database structure file. You can edit the structure file in this screen.

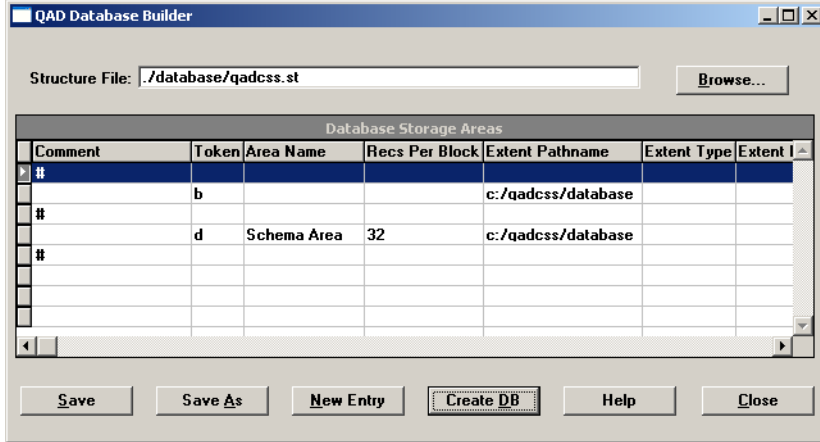


Fig. 3.3  
qadcss Structure File

- 5 Choose Create DB to create the new database. You are then asked what database to copy to create the new database.

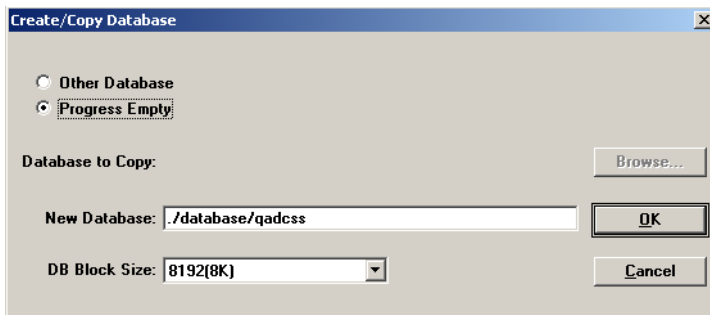


Fig. 3.4  
Create/Copy the qadcss Database

- 6 The defaults are fine. The DB Block Size must be set to 8192(8K). Choose OK to create the database. A log window displays database creation progress. Choose Close to shut the log window and continue.
- 7 Once the database has been created, you are asked to connect to it.

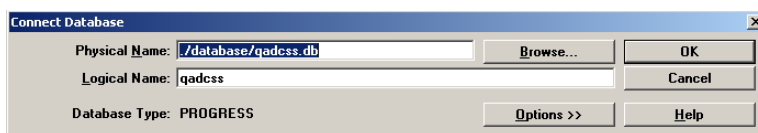
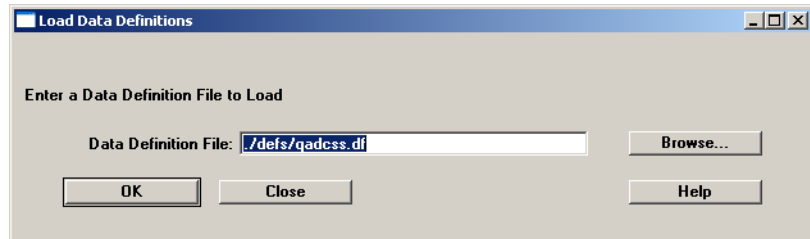


Fig. 3.5  
Connect Database

- 8 Choose OK to connect. The Load Data Definitions screen displays.

**Fig. 3.6**  
qadcscs Load Data  
Definitions Screen



- 9 The correct file name and location appear by default. Choose OK. The schema loads and a log window displays the progress. Choose Close to shut the log window and continue.
- 10 Choose Close in the QAD Database Builder.

## Starting the Database Server

Complete these steps for:

- In-Place
- Dump/Load

The QAD CSS database needs to be run in multi-user mode to allow connections from multiple WebSpeed agents. Depending on the server configuration and Progress and WebSpeed versions used, a TCP connection to the database may be required.

**Important** Make sure you execute this sequence successfully. The QAD CSS database must be started before you continue with the installation procedure.

See Chapter 5, “Starting Up and Shutting Down,” in the *Progress Database Administration Guide and Reference* for details.

Example scripts for starting and stopping databases are included in the following directories:

- `utils_ms`: utilities formatted for use with Windows
- `utils_ux`: utilities formatted for use with UNIX and Linux

If a TCP connection is used, QAD recommends that the port number be documented in the `services` file. This is usually `/etc/services` on UNIX systems, `C:\winnt\system32\drivers\etc\services` on Windows. See the server documentation for information.

The following is an example entry in the `/etc/services` file:

```
#EXAMPLE ENTRY:
# <service_name>      <portnumber/protocol> #<description>
qadcSSDB              5661/tcp                # QAD CSS DB
```

## Start the Database on UNIX

Examples of database start and stop scripts include:

- `startdb`

```
DLC=ProgressInstallDir; export DLC;
$DLC/bin/proserve CSSDbDir/qadcSS -L 1000 -B 5000
-S qadcSSDB -N TCP;
```

- `stopdb`

```
DLC=ProgressInstallDir; export DLC;
$DLC/bin/proshut CSSDbDir/qadcSS -by
```

Below is the output produced when the database is started using the sample `startdb` script:

```
./startdb
PROGRESS Version 9.1C as of Thu Jun 7 10:03:59 EDT 2001
17:53:19 BROKER 0: Multi-user session begin. (333)
17:53:19 BROKER 0: Begin Physical Redo Phase at 320 . (5326)
17:53:20 BROKER 0: Physical Redo Phase Completed at blk 435 off
3894 upd 6970. (7161)
17:53:21 BROKER 0: Started for qadcSSDB using TCP, pid 24729.
(5644)
```

## Start the Database on Windows

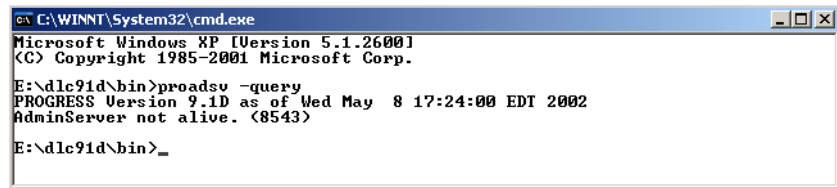
Start the database servers on Windows in the Progress Explorer.

Depending on your specific Progress version, system configuration, and operating system, the Progress Explorer navigation and display layout may differ slightly from the following instructions. Refer to the Progress Explorer online help for detailed help.

- 1 Verify that the AdminServer process is running.
  - If the software is located on a Windows server, open a command window and enter the following:

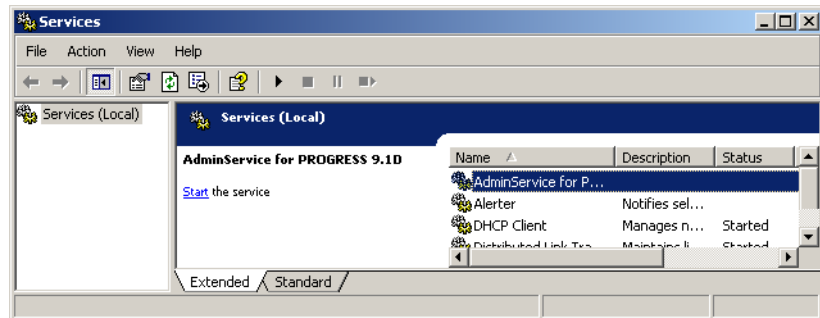
```
ProgressInstallDir\bin\proadsv -query
```

**Fig. 3.7**  
Dead Admin Server  
Message



If the AdminServer is not running, open Settings|Control Panel| Services from the Windows Start button. Then, select the AdminService for Progress 9.1 and click Start.

**Fig. 3.8**  
Starting the Admin  
Server in the  
Windows Services  
Manager



- If the software is located on a UNIX server, run the following command on that server:

```
ProgressInstallDir\bin\proadsv -query
```

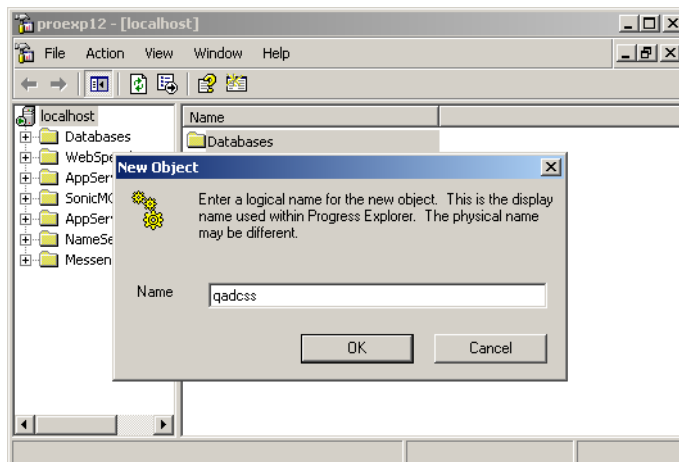
If the AdminServer is not running, start it using the following command:

```
ProgressInstallDir\bin\proadsv -start
```

- 2 From the Windows Start menu, select Programs|Progress|Progress Explorer Tool.

The localhost AdminServer and any others defined on your system display.

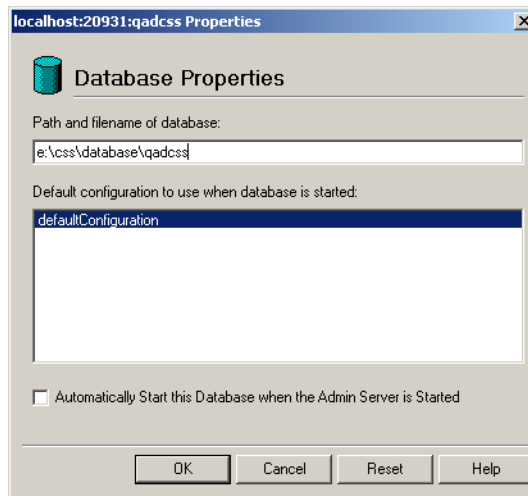
- 3 Verify that the correct AdminServer is on the list. (If the AdminServer is on the system from which you are running Progress Explorer, it is shown as localhost.) If the correct server is not on the list, consult the Progress documentation for instructions on adding a new server service.
- 4 Right-click the server where QAD CSS is installed and select Connect. Enter the user ID and password to administer the service; by default this is the user's three-letter initials and blank.
- 5 Right-click Databases in the right window and select New. Enter the name for the database as `qadcss` and click OK.



**Fig. 3.9**  
Adding the qadcss Database

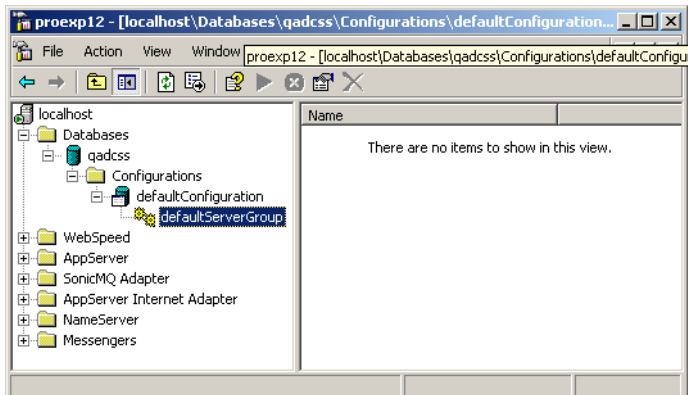
- 6 Database Properties displays. Enter the complete path to the QAD CSS database in `CSSDbDir` and click OK.

**Fig. 3.10**  
Database Properties

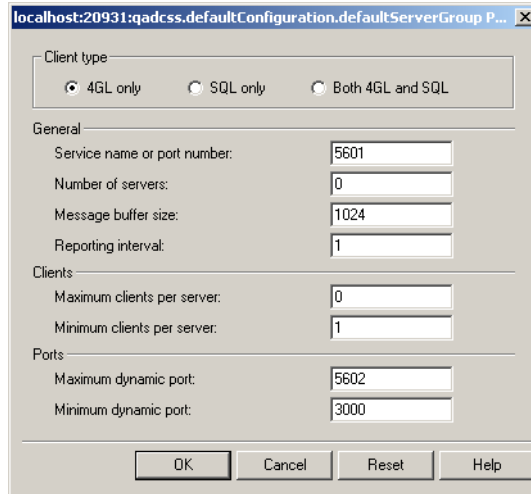


- 7 In the left window, expand the service, the database just created, the configuration, and defaultConfiguration.

**Fig. 3.11**  
Expanded  
defaultConfiguration  
node

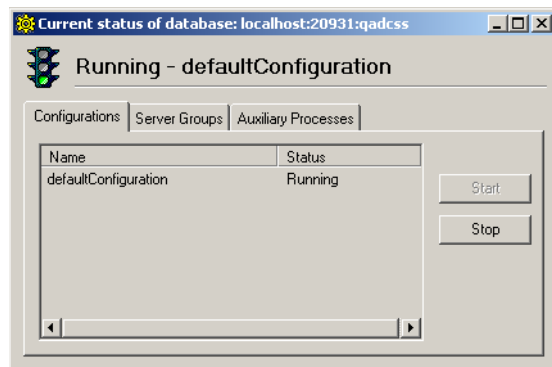


- 8 Right-click defaultServerGroup and choose Properties. In the dialog box:
- a Select 4GL Only.
  - b Enter a free service port number in the Ports section. (If necessary, contact the system administrator for a number.)
  - c Click OK.



**Fig. 3.12**  
Database  
Configuration  
Properties

- 9 Right-click the database name in the left window and choose Start.
- 10 Right-click the database again and choose Status. The database should be running.



**Fig. 3.13**  
Database Running

## Modifying the QAD CSS Setup

Complete these steps for:

- In-Place
- Dump/Load

If you also upgraded your Progress or WebSpeed version as part of your QAD CSS migration, you will need to tailor the configuration of these products for QAD CSS. Follow the instructions in “Installing QAD CSS” under:

- “Setting Up WebSpeed” on page 29
- “Configuring QAD CSS” on page 37

## Converting the Database

Complete these steps for:

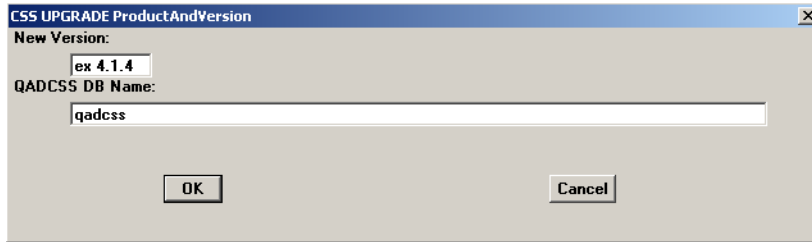
- In-Place
- Dump/Load

The database conversion is completed using an automated script run in MFG/UTIL. A different script is provided for in-place and dump/load.

### Run the In-Place Conversion

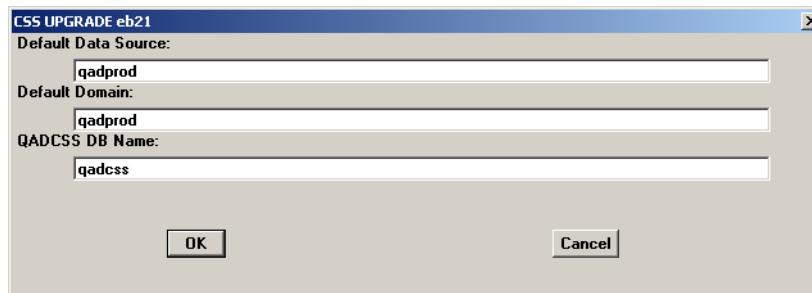
- 1 Start MFG/UTIL and select Load Database Schema from the Upgrade CSS menu.
- 2 In the Connect Database screen, connect to your existing CSS database. The log window displays showing a successful connection.
- 3 You are then prompted to locate the correct `.df` file, `deltacss.df`. Select the correct file for the language you installed. The file is located in `CSSInstallDir\defs`. Choose OK to begin the load.
- 4 After the load is complete, select Update Product and Version from the Upgrade CSS menu. Enter the correct version name and database name. The version name for the current version is `ex 4.1.4`. The database is the QAD CSS database name located in:

`CSSInstallDir\database`



**Fig. 3.14**  
Updating the  
Product Version

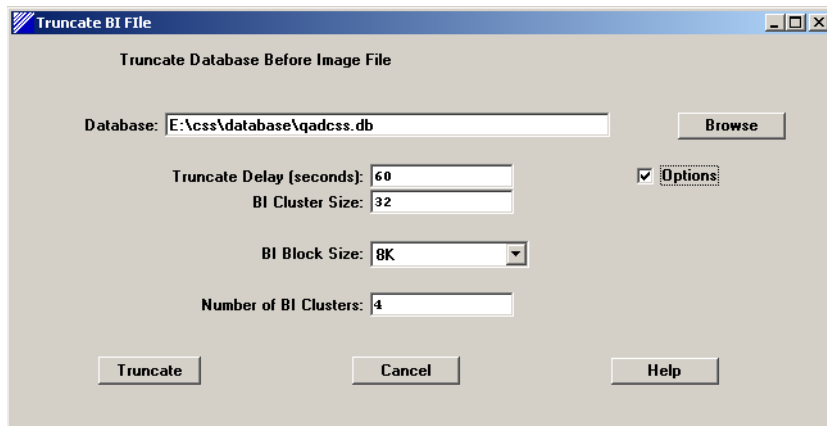
- 5 The Log Window displays and shows progress. Choose Close to Continue.
- 6 On completion, select Load Data into Database to load the new data shipped with the current QAD CSS version. In the Load Data Contents screen, locate the *CSSInstallDir/defs* directory and choose OK.
- 7 If you are using MFG/PRO eB2.1, you must define a QAD CSS data source and a related and valid MFG/PRO domain in order to connect to MFG/PRO. Choose Assign Default Data Source|Domain from the Configure CSS menu.



**Fig. 3.15**  
Defining the  
Default Data  
Source

- 8 Enter a valid domain from your eB2.1 installation and enter an equivalent data source for QAD CSS.
- 9 Choose OK to save the changes.
- 10 Then truncate the target *qadcass* database. Select Truncate Database BI File from the Database menu. Locate the *qadcass* database and choose OK.

**Fig. 3.16**  
Truncating  
qadcsc



- 11 Close the Log Window on completion and skip to “Verifying QAD CSS Setup” on page 78.

## Run the Dump/Load Conversion

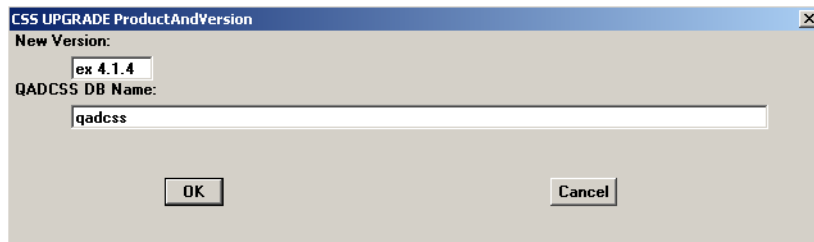
- 1 Start MFG/UTIL and select Dump Data from Database from the Upgrade CSS menu.
- 2 In the Connect Database screen, connect to your old QAD CSS database (source). The log window displays showing a successful connection.
- 3 Select a dump location, for example *CSSInstallDir/dump*, and choose OK to continue.
- 4 Select Progress Editor from the File menu.
- 5 In the Editor, select Data Administration (GUI) or Data Dictionary (character) from the Tools menu.
- 6 In Data Administration, select Admin|Dump Data and Definitions|Sequences Current Values.
- 7 Use the Files button to locate the */dump* directory and choose OK to dump the sequences.



**Fig. 3.17**  
Dumping Current  
Sequences from the  
Source Database

- 8 On completion, select Disconnect Databases from the Databases menu.
- 9 Select Load Data into Database from the Upgrade CSS menu to load the data you just dumped. Connect to your new QAD CSS database (target); then locate the data in *CSSInstallDir/dump*.
- 10 After the load is complete, select Update Product and Version from the Upgrade CSS menu. Enter the correct version name and database name. The version name for the current version is ex 4.1.4. The database is the QAD CSS database name located in:

*CSSInstallDir\database*



**Fig. 3.18**  
Updating the  
Product Version

- 11 The Log Window displays and shows progress. Choose Close to Continue.
- 12 On completion, select Load Data into Database to load the new data shipped with the current QAD CSS version. In the Load Data Contents screen, locate the *CSSInstallDir/defs* directory and choose OK.

## Load Sequence Values

One data file dumped from your source database must be loaded using Progress tools. The following instructions are for Windows tools. If you use a character interface, the instructions are the same with one exception: Progress calls the Data Administration tool in Windows the Data Dictionary in character.

- 1 From MFG/UTIL, select Progress Editor from the File menu.
- 2 In the Editor, choose Data Administration from the Tools menu.
- 3 In the Data Admin tool, select Connect from the Database menu. In the Connect Database screen, locate your target `qadcss` database, and choose OK.
- 4 Select Sequences Current Values from the Load Data and Definitions submenu on the Admin menu. Use the Files button to locate the `_seqvals.d` dumped from your source database in `CSSInstallDir/dump`.

**Important** In the Load Sequence Current Values, even if the correct path and file name appears, use the Files button to correctly locate and select the file as shown.

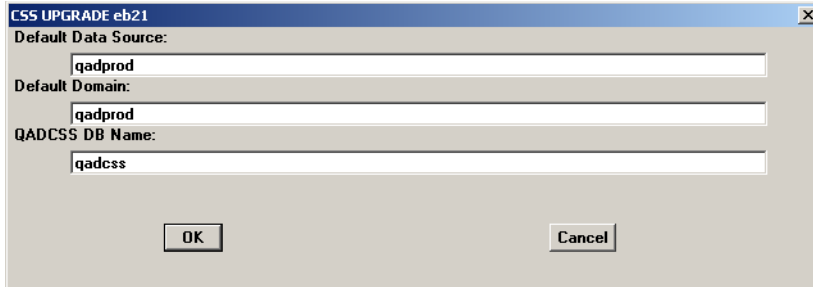
**Fig. 3.19**  
Load Sequence  
Current Values  
Screen



- 5 Choose OK to complete the load.
- 6 After the load, select Disconnect from the Database menu. You are asked to confirm. Choose Yes to continue.
- 7 Exit the Admin tool and the Procedure Editor using the File|Exit menu options.

## Define a Data Source

- 1 If you are using MFG/PRO eB2.1, you must define a QAD CSS data source and a related and valid MFG/PRO domain in order to connect to MFG/PRO. Choose Assign Default Data Source|Domain from the Configure CSS menu.

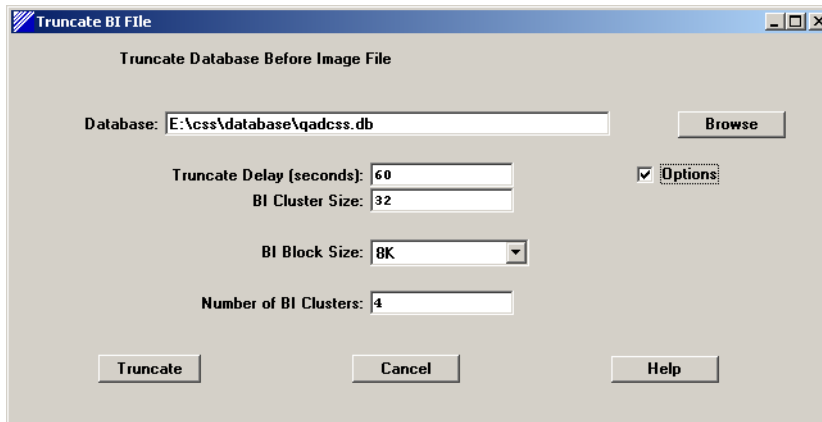


**Fig. 3.20**  
Defining the  
Default Data  
Source

- 2 Enter a valid domain from your eB2.1 installation and enter an equivalent data source for QAD CSS.
- 3 Choose OK to save the changes.

## Truncate the BI File

- 1 Then truncate the target `qadcss` database. Select Truncate Database BI File from the Database menu. Locate the `qadcss` database and choose OK.



**Fig. 3.21**  
Truncating  
`qadcss`

- 2 Close the Log Window on completion and continue on in the next section.

## Verifying QAD CSS Setup

Complete these steps for:

- In-Place
- Dump/Load

Use the procedures in this section to verify that the modifications to the setup files have been done correctly.

## Starting the Broker

When any modifications are made to either `web-disp.p` or `qadcass.ini`, the QAD CSS WebSpeed broker must be restarted.

### Starting the Broker in Windows

In Windows environments, you can use Progress Explorer to stop and restart the broker. Right-click the QAD CSS service name under the WebSpeed subdirectory and choose the appropriate command.

- 1 Right-click the broker name in the left window and choose Start.  
The startup process may take several minutes.
- 2 Right-click the broker name again and choose Status.
  - a On the Summary tab, confirm that the Broker Status is Active.
  - b On the Details tab, confirm that State is Available for all agents.

### Starting the Broker in UNIX

Figure 3.22 illustrates the command and display sequence for restarting the WebSpeed broker in UNIX. The commands to start or restart the broker are based on those in the furnished example scripts.

The WebSpeed broker may need some time to start. Monitor the startup process by performing a query. Check the server log for this WebSpeed environment for appropriate startup messages.

**Note** The WebSpeed agent must have a state of Available in order to continue with the installation.

```

CSSInstallDir# ./stop
PROGRESS Version 9.1C as of Thu Jun 7 10:03:59 EDT 2001

Connecting to Progress AdminServer using rmi://localhost:20931/
Chimera (8280)
Searching for brokerName (8288)
Connecting to brokerName (8276)
Shut down brokerName (8277)

CSSInstallDir# ./start
PROGRESS Version 9.1C as of Thu Jun 7 10:03:59 EDT 2001

Connecting to Progress AdminServer using rmi://localhost:20931/
Chimera (8280)
Searching for brokerName (8288)
Connecting to brokerName (8276)
Starting brokerName. Check status. (8296)

CSSInstallDir#
CSSInstallDir# ./status
PROGRESS Version 9.1C as of Thu Jun 7 10:03:59 EDT 2001

Connecting to Progress AdminServer using rmi://localhost:20931/
Chimera (8280)
Searching for brokerName (8288)
Connecting to brokerName (8276)

Broker Name           : brokerName
Operating Mode        : Stateless
Broker Status         : ACTIVE
Broker Port           : brokerPort
Broker PID            : 2740
Active Agents         : 1
Busy Agents           : 0
Locked Agents         : 0
Active Agents         : 1
Active Clients (now, peak) : (0, 0)
Client Queue Depth (cur, max) : (0, 0)
Total Requests        : 0
Rq Wait (max, avg)    : (0 ms, 0 ms)
Rq Duration (max, avg) : (0 ms, 0 ms)

PID  State      Port  nRq   nRcvd  nSent  Started  Last Change
02680 AVAILABLE 03202 000000 000000 000000 [start]  [last change]

```

**Fig. 3.22**  
Sample Verification  
Process

## Verify Database Connection

Use the following steps to access the WebSpeed Workshop and confirm that the databases are connected.

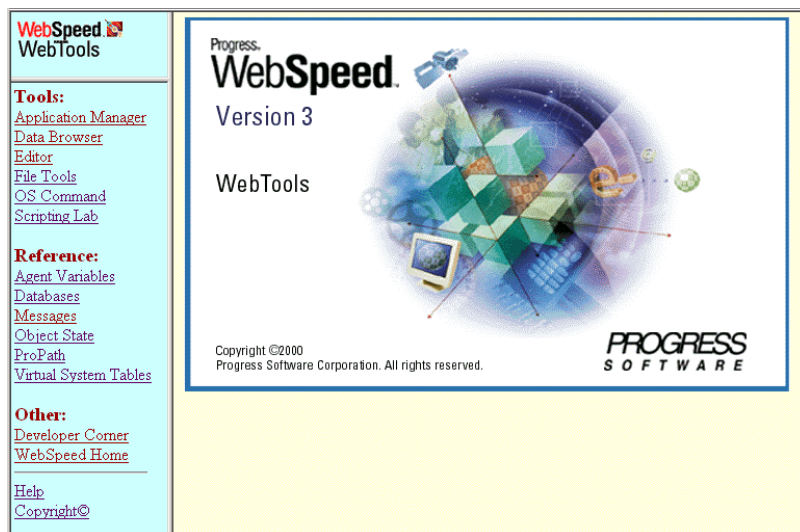
- 1 Using a Web browser, go to the WebSpeed Workshop by entering the following URL:

```
http://webServer/webServerScriptsDirectory/wspd_cgi.sh/  
WService=brokerName/workshop
```

**Note** The *webServerScriptsDirectory* is typically your Web server /cgi-bin directory.

**Note** In Windows environments, *cgiip.exe* is typically specified rather than *wspd\_cgi.sh*.

A screen similar to the following should display.



- 2 Click the Databases link from the menu.

A drop-down list displays the connected databases.

**Important** The QAD CSS database must be connected in order to continue with the installation.

## Verify PROPATH

Because you must update the PROPATH as part of the configuration process, you should use WebSpeed Workshop to validate your changes.

- 1 From the WebSpeed Workshop, click the ProPath menu item.  
The resulting screen displays the WebSpeed PROPATH.
- 2 Confirm that these values match the entries in the `qadcss.ini` file.

## Administering WebSpeed

Complete these steps for:

- In-Place
- Dump/Load

To help ease the task of WebSpeed/QAD CSS administration, the installation CD provides example scripts, demonstrating how to start, stop and monitor the WebSpeed brokers and AdminServer. The files are in the following directories:

- `utils_ms`: utilities formatted for use with Windows
- `utils_ux`: utilities formatted for use with UNIX and Linux

Example scripts include:

- `startadm`

```
DLC=ProgressInstallDir; export DLC
$DLC/bin/proadsv -start
```

- `start`

```
DLC=ProgressInstallDir; export DLC
$DLC/bin/wtbman -i brokerName -start
```

- `stop`

```
DLC=ProgressInstallDir; export DLC
$DLC/bin/wtbman -i brokerName -stop
```

- `status`

```
DLC=ProgressInstallDir; export DLC
$DLC/bin/wtbman -i brokerName -query
```

For more information on testing a WebSpeed configuration, see Chapter 8.13, “Testing Your Configuration,” in the Progress *WebSpeed Installation and Configuration Guide*.

For more information on `proadsv` or `wtbman`, see Chapter 8.2.3, “WebSpeed Command-Line Utilities,” in the Progress *WebSpeed Installation and Configuration Guide*.

## Generating a WebSpeed Error File

Complete these steps for:

- In-Place
- Dump/Load

You now create a text file that redirects WebSpeed errors to a URL.

When the MFG/PRO server has gone down for some reason, QAD CSS can still be used as a stand-alone product. However, at check-out, a message will appear that the system is currently unavailable. The text file substitutes a user-friendly message that the system is unavailable for the WebSpeed error that would normally display.

These steps create a text file, `wsCusErr.txt` in the QAD CSS install directory. After the text file is created, you must manually move it to the working directory used by the Progress CGI script.

- 1 Launch MFG/UTIL.
- 2 Select Generate WebSpeed Custom Error File from the Configure CSS menu. Use the following screen and values to create the custom error message.

**Fig. 3.23**  
Generating a  
Custom WebSpeed  
Error File

The screenshot shows a dialog box titled "CSS Generate WebSpeed Custom Error File". It contains the following fields and values:

- Error Number:** 0
- Error Type:** 2
- URL or Message :** http://col1669.qad.com/qadcss/SystemUnavailable.html

Buttons for "OK" and "Cancel" are located at the bottom of the dialog.

Leave the Error Number set to 0 and the Error Type set to 2. The URL should contain the QAD CSS host name and domain (coli669.qad.com in the example), the QAD CSS install directory (qadc`ss`), and the `SystemUnavailable.html` page. This should all default in.

**Note** The host name and domain can include the Web server port number as well, as in `coli669.qad.com:9999`.

- 3 Choose OK to save your changes. The file is saved to your QAD CSS install directory.
- 4 Copy or move the file to your Progress work directory (WRKDIR). For example, `c:\wrk` in Windows or `/tmp` on UNIX.

## Compiling QAD CSS Source Code

Complete these steps for:

- In-Place
- Dump/Load

Follow these steps to compile the QAD CSS source code from the WebSpeed Workshop:

- 1 Using a Web browser, go to the WebSpeed Workshop by entering the following URL:

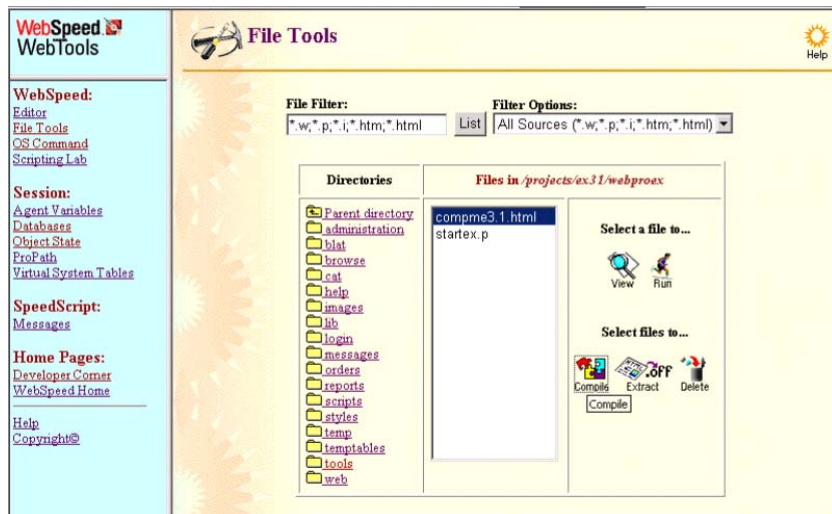
```
http://webServer/webServerScriptsDirectory/wspd_cgi.sh/  
WService=brokerName/workshop
```

**Note** The `webServerScriptsDirectory` is typically your Web server `/cgi-bin` directory.

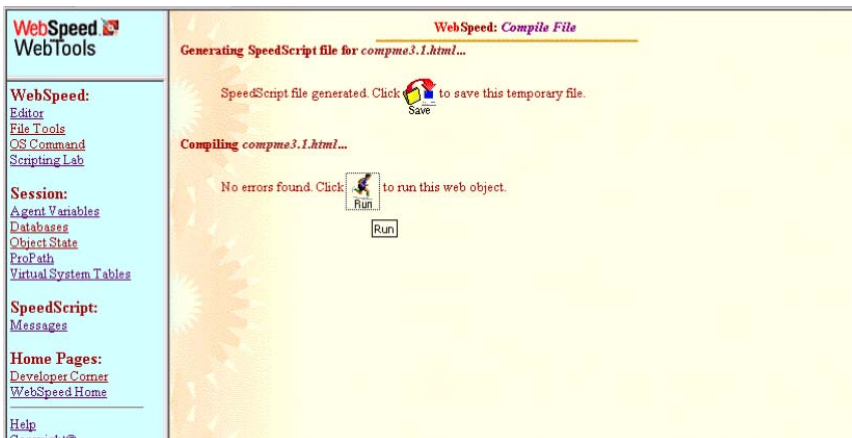
**Note** In Windows environments, `cgiip.exe` is typically specified rather than `wspd_cgi.sh`.

- 2 Select File Tools from the menu on the left.

3 Compile compme3.1.html in the WebSpeed Workshop.



4 Run compme3.1.html from the post-compilation dialog.



- 5 In Filter, enter `.html`. Highlight all files to be recompiled and click Compile.

**Note** Do not compile the `.html` files in the `tools` directory, such as `rp_rpt_template.html`. These files are intended to be used as samples for creating your own programs and contain code that may cause compile errors.

Typically, you compile the `.html` files only. When you are ready to move to a production environment, you can also compile the program files (`.p`). However, since these are loaded persistently, compiling them does not improve performance significantly.

The compilation process may take a few minutes.

- 6 Compile the two `.w` files in `CSSInstallDir/qadcsc/css/cl/`. In Filter, enter `.w`. Highlight all files to be recompiled and click Compile.

## Completing Conversion Setup

Complete these steps for:

- In-Place
- Dump/Load

This section describes other tasks required to complete the installation and setup of QAD CSS. Use these instructions to:

- Set up directory paths to support a number of administrative functions.
- Set up system and order control maintenance features.

### Set QAD CSS Directory Paths

Before you access the QAD CSS database, verify the system variables from your previous install. No changes should be required unless you have upgraded your MFG/PRO version, or have reconfigured your QAD CSS installation.

- 1 In MFG/UTIL choose Configure CSS|Setup Directory Paths.

**Fig. 3.24**  
Set Directory Path  
Screen

▶ See the “System Control Maintenance” section in *Administration Guide: QAD Customer Self Service* for more information.

- 2 Accept the defaults or enter corrected values for:

*Image Path.* The virtual directory on the Web server where the QAD CSS images reside. For example, this directory can be defined as:

- An absolute URL (`http://www.server.com/images/`)
- A relative URL (`/images/`)

*Script Path.* The virtual directory on the Web server where the QAD CSS JavaScript files reside. For example, this directory can be defined as:

- An absolute URL (`http://www.server.com/scripts/`)
- A relative URL (`/scripts/`)

*Style Path.* The virtual directory on the Web server where the QAD CSS HTML style sheets reside. For example, this directory can be defined as:

- An absolute URL (`http://www.server.com`)
- A relative URL (`/styles/`)

*Temporary Directory.* The directory identified in your `qadcass.pf` file by the `-T` parameter.

*MFG/PRO Source Code Directory.* The location of MFG/PRO compiled code.

*QADCSS DB Name.* The QAD CSS database name. No extension is required.

Choose OK to save any changes and write the directories to WebSpeed.

## Configure Settings in QAD CSS

Use this section to configure a number of settings within the QAD CSS application.

- 1 Restart the WebSpeed agents.
- 2 Using a Web browser, enter the following URL to connect to the log-in page of QAD CSS:

```
http://webServer/webServerScriptsDirectory/wspd_cgi.sh/  
WService=brokerName/lg/lg_login.html
```

**Note** In Windows environments, `cgiiip.exe` is typically specified rather than `wspd_cgi.sh`.

- 3 To log in, specify the default user ID and password, `demo` and `demoex`, respectively.

## Update System Control Settings

- 1 From the menu, select Administration|System Control|System Control.
- 2 Review the options to determine which should be changed to optimally configure the QAD CSS application. Initially, you can accept all defaults. However, note the following fields:
  - Temp Directory should reflect the appropriate path to the `/temp` directory that will be used by the application.
  - Extend to ERP should not be selected until MFG/PRO setup is complete.

## Update Registry Settings

Updating the registry settings is only required if you upgraded your MFG/PRO version to eB2.1.

Use System Registry Maintenance to specify a user ID and password that let QAD CSS access MFG/PRO.

- 1 From the menu, select Administration\System Registry Maintenance.
- 2 Update registry values used when logging in to MFG/PRO:
  - QADUser, by default mfg
  - QADUPasswd, by default blank
  - QADUDomain, by default blank (required for eB2.1 only)
  - a Enter QADUser in the Search for field and click Search.
  - b Click the QADUser key to display the Detail Registry Editor.
  - c By default, this field is set to mfg. If this is not a valid user in the MFG/PRO system you will be accessing, change it now.
  - d Repeat again for QADUDomain, entering the default data source set up during the conversion steps in “Converting the Database” on page 72.

**Important** You must also set up the same user ID with the same password in MFG/PRO User Maintenance (36.3.18, 36.3.1 in eB2.1).

▶ See  
Implementation  
Guide: QAD  
Customer Self  
Service.

The system registry also includes numerous other settings that control how you use QAD CSS.

- 3 Update the value for the directory where JavaScript messages are stored.
  - a Enter js in the Search for field and click Search.
  - b Click the jsmsgDir key to display the Detail Registry Editor.
  - c Change the Key Value to *CSSInstallDir/qadcsc/css/scripts*.
  - d Click Save, then click Home.

## Generate Messages

Generating messages is required for all conversions.

- 1 From the menu, choose Administration|Messages|Error Message Maintenance.
- 2 Click the Generate button on the left side. This will compile a JavaScript file containing messages required by the system.  
**Note** During use of the application, you need to do this whenever you add a new message of type JS or support for a new language.
- 3 Click Home to return to the main menu.

## Register Your Serial Number

Registering your serial number is required for all conversions.

- 1 Choose Administration|System Control|QAD CSS Clearance Code.
- 2 Enter the customer name as it appears on the license page included in your product package.
- 3 Enter the serial number as it appears on the license page.
- 4 Click submit. You are redirected to a secure server URL for registering your product. Depending on how your browser is configured, you may see several messages about security.
- 5 Click Yes to accept the terms of the license agreement.
- 6 The QAD CSS Clearance Code screen redisplay with information about your license, including the number of WebSpeed agents and the QAD CSS modules. Click Update to accept this information.
- 7 Leave QAD CSS running; you will return to the menu in the next procedure.

## Update MFG/PRO for Credit Card Processing

If you plan to implement credit-card processing, you must update your MFG/PRO installation with two programs and two data files. The required files are included on the QAD CSS installation media in MFG/PRO version and service-pack specific directories. For example, if you are using MFG/PRO eB2 SP3, use the files in *CSSInstallDir/MFGPRO/eB2/SP3*.

For complete details on implementing credit-card processing, see the chapter on B2C order processing in *Implementation Guide: QAD Customer Self Service*.

To implement these changes:

- 1 Locate the files for your MFG/PRO eB2 release and service pack on the CD.
- 2 Copy the files to your *MFGPROInstallDir*.
- 3 Create a text file named *csscomp.wrk*. It should contain a listing of the two *.p* files you copied, *soivpst1.p* and *sosoba.p*.
- 4 Start MFG/UTIL and use the *csscomp.wrk* compile list to compile the new files into destination directory *MFGPROInstallDir\xrc*.
- 5 When the compile completes, choose Database|Load Data into Database.
- 6 Connect to the admin database and choose OK. Locate the two data files you copied from the QAD CSS CD: *lbl\_mstr.d* and *lbl\_det.d*.
- 7 When the tables display, make sure both are selected and choose OK. Press spacebar to close the window when the load completes and exit MFG/UTIL.

## Connecting to MFG/PRO

Complete these steps for:

- In-Place
- Dump/Load

Use the procedures in this section to set up QAD CSS to work with MFG/PRO. In the following tasks, you:

- Update MFG/PRO parameter and startup settings.
- Connect to the MFG/PRO databases through QAD CSS.

You must modify the `qadcss.ini` file to point to the correct MFG/PRO databases and source code. The easiest way to do this is to locate the `.pf` file currently being used to log in to MFG/PRO and copy the database connection statements from it to the `qadcss.ini` file.

### 1 Modify the database connections in the `qadcss.ini` file:

**Note** Be sure that the first database listed is the `qaddb` database, and use the logical database names shown below.

```
Database Connections # Do not edit or remove this line.
#All database connection entries should be after this line.

-db /projects/qaddb/eb2qad.db -ld qaddb
-db /projects/qaddb/eb2adm.db -ld qadadm
-db /projects/qaddb/eb2help.db -ld qadhelp
-db /CSSDbDir/qadcss -ld qadcss
```

### 2 Modify the PROPATH in the `qadcss.ini` file for the version of MFG/PRO you are using. This sample is for MFG/PRO eB2:

```
# Allow Multi Propath Entry
# All Propath entries should be after this line.
Propath # Do not edit or remove this line.

./
/css/qad/eB2
/css/qad
/css
/MfgProInstallDir/
/MfgProInstallDir/us
/MfgProInstallDir/triggers
/MfgProInstallDir/xrc
/MfgProInstallDir/src
/MfgProInstallDir/bbi
```

**Important** For eB2.1 implementations, /mfg replaces /qad in the second and third entry:

```
./
/css/mfg/eB2.1
/css/mfg
/css
```

- 3 Return to QAD CSS and from the menu select Administration, then choose System Control Maintenance. Select Extend to ERP to enable communication with the MFG/PRO database.
- 4 Restart the QAD CSS service (in this document, qadcsc) by running the stop script then the start script on UNIX systems or using Progress Explorer in Windows.

**Note** View the *BrokerName.server.log* file in the */CSSInstallDir/qadcsc/logs* directory. Notice if any errors were logged and whether the following message displays:

```
lib/lib_sys_adapter1.p
```

- 5 Check the *CSSInstallDir/qadcsc/temp* directory to see if any files were generated. If so, review the most recent files with extensions *.log* and *.log.erp* to verify that log-in was successful.

## Final Steps

Complete these steps for:

- In-Place
- Dump/Load

After you have successfully completed the installation and verified the setup, you complete these final steps in your production environment:

In Progress Explorer, update agent properties for the QAD CSS broker:

- 1 Click Advanced Features under the Agent section. Set the debug mode to disabled and click OK.
- 2 Click Pool Range under the Agent section. Set the value based on the licensed number of agents you have registered and click OK.
- 3 Complete CSS implementation using *Implementation Guide: QAD Customer Self Service*.

# Index

## A

AdminServer 26, 69  
  starting 25, 68  
Apache Web server  
  virtual directories 47

## B

BI file, truncating 22  
broker, WebSpeed 31  
  logging settings 32  
  starting 42, 78

## C

CD  
  installing 16, 61  
  mount commands 16, 61  
cgiip.ex 49, 83  
clearance code 55, 89  
code  
  compiling 49, 83  
compiling QAD CSS code 49, 83  
compme3.1.html 50, 84  
conversion  
  overview 10  
conversions  
  dump/load 74  
  in-place 72  
CSS Guided Setup 19, 64

## D

database  
  creating 18, 62  
  loading data 22  
  start and stop scripts 24, 67  
Databases  
  QADCSS DB Name 52, 87  
defaultServerGroup 28, 70  
deployment options 7

  distributed 9  
  single 8  
directories  
  defining 51, 85  
  installation 12  
dump/load conversion 74  
  overview 10, 60

## E

Error Message Maintenance 55, 89  
Extend to ERP 54, 58, 87, 92

## I

Image Path 52, 86  
in-place conversion 72  
  overview 10, 60  
installation  
  CD media 16, 61  
  deployment options 7  
  directories 12  
  requirements 10  
  script 17, 61  
Internet Information Server (IIS)  
  virtual directories 48

## J

JavaScript messages 55, 88  
jsmsgDir 55, 88

## L

Logging Settings  
  broker 32

## M

message  
  Javascript 55, 88  
MFG/PRO  
  connecting to 57, 91

- Source Code Directory 52, 86
- User Maintenance 54, 88
- version required 10

#### MFG/UTIL

- CSS Setup Screen 18, 63
- database creation 18, 62
- Generate Sample ubroker.properties File 35
- Setup Directory Paths 51, 85
- mount commands, UNIX 16, 61

#### P

- password 54, 88
- permissions 16
- Pool Range 34
- Progress
  - version required 11
- Progress Explorer
  - Pool Range 58, 92
  - setting up Progress servers 30
  - setting up remote machines 30
  - starting database 25, 68
  - WebSpeed setup 30

#### PROPATH

- qadcss.ini 57, 91
- verifying 46, 81

#### Q

##### QAD CSS

- architecture 6
- Clearance Code 55, 89
- deployment 7
- directory paths 51, 85

##### QAD Database Builder 20, 64

- qadcss.ini 40, 57, 91
- qadcss.pf 40

##### QADUDomain 54, 88

##### QADUPasswd 54, 88

##### QADUser 54, 88

#### R

- registration 55, 89
- requirements, installation 10

#### S

- Script Path 52, 86
- Serial Number 55, 89
- server
  - starting 24, 66
- services file 24, 67
- SSL 11
- structure file. 20, 64
- Style Path 52, 86
- System Control Table Maintenance 54, 87
- System Registry Maintenance 54, 88

#### T

- Temporary Directory 52, 86
- Trade Management 10
- truncate BI file 22

#### U

- ubroker.properties
  - configuring UNIX 35
  - configuring Windows 30
- User Maintenance (36.3.18) 54, 88
- user, MFG/PRO 54, 88
- utils\_ms 24, 46, 66, 81
- utils\_ux 24, 46, 66, 81

#### V

- virtual directories 47

#### W

- Web server 11
  - virtual directories 47
- web-disp.p 38
- WebSpeed
  - administration 46, 81
  - broker setup 31
  - Pool Range setting 34
  - setting up 29
- WebSpeed Workshop 45, 80
  - compiling code 49, 83
- web-util.p 38
- wspd\_cgi.sh 49, 83