

QAD Demand Management Release Notes

March 2012

These release notes include information about the latest Demand Management fixes and changes. These changes may affect the way you implement and use Demand Management.

Review this document and the Demand Management errata *before* proceeding with any phase of a Demand Management implementation.

QAD highly recommends that you implement the latest Demand Management release available. Check the QAD Web site to make sure you have the latest release notes, user guide, installation errata, installation guide, and installation media:

<http://support.qad.com>

Use the following list to find a specific release:

Planning Portal 6.1 Release Notes **2**

Demand Management Engine 6.1 Release Notes **10**

DME Reporting Release Notes **21**

Batch Scheduler Release Notes **34**

Planning Portal 6.1 Release Notes

Overview

Planning Portal is a web application that allows stakeholders (Sales, Suppliers, Customers, and so on) to add their business knowledge to the forecast. For example, Planning Portal can be used to provide sales a view of their customers' demand that typically resides on several Excel spreadsheets.

To see system requirements and more information, please refer to the following documentation:

- Administrators: *Planning Portal Administration Guide*
- End Users: *Planning Portal User Guide*

New Features

6.1.20215.1

- Display Chart At Detail View
 - This is a new setting in Miscellaneous - Others called DisplayChartAtDetailView that allows to User hide the Chart in the Detail View.

6.0.21006.1

- Home Page – all new interfaces with quick links to many features.
 - My Workflow – shows the user assigned tasks and deadlines with the ability to change the status.
 - My Shortcuts – links to pre-defined Detail, Summary, or Classic views.
 - My Notes – displays notes by user for a given time range.
 - My Reports – provides quick access to pre-defined reports.
 - My Charts – create multiple chart definitions under My Settings and view them from the Home Page.
- Login – the application only shows the scenarios that the user has security to access.
- Notes at observation level - new capability to add notes at observations at aggregate levels with static and on-fly hierarchy.
 - Ability to create or see notes using right click.
 - Ability to see the history notes.
 - My Settings - New tab where users can set personal preferences, manage view information and configure Home Page panels.
- Auto Save – An Auto Save process at Classic, Detail and Summary view, this is a new setting in Miscellaneous - Others called AutoSaveEnabled that allow the user to save automatically the change done in the views.
- Auto Size – Automatically saves the changes made in the column width. If the users change the size the system remembers for next time they open the portal.
- The total values in the Summary View are displayed according to all series belonging to the scenario and filter that the User is using.
- Price and Cost attribute are included in Decimal point and Round Mode.
- The application support any currency symbol, the user can assign in the Admin tool by opinion line the symbol.

- Support Excel 2007 or higher to export from all views.

5.5.10821.1

- Admin Tool – new setting in Miscellaneous - Others called DetailLevelEnabled that allow to user define if the load is lowest level or highest level in the hierarchy.

5.5.10729.1

- Notes – new capability to add notes at static and on-fly hierarchy levels as well as viewing notes history for a series.
 - Ability to see if notes already at the series level.
 - See the text for the most recent note.
 - Ability to set and enter Reason Codes from Administration Tool.
 - Ability to set if note is required after save data changes.
- User Workflow – allows users to change their status for each business cycle so that managers can see when all input is complete.
 - Ability to configure Workflow status from Administration Tool.
 - Ability to set permissions level to users
 - Modify individual user status
 - Viewing status of one or more users' status
- Data Domain
 - Ability to set fields in View By section according the data domain. In the portal the user only will use in View By section fields that are defined in his/her data domain.

5.5.005.05.28.1

- Notes – new capability to add notes at static and on-fly hierarchy levels as well as viewing notes history for a series.
 - Ability to see if notes already at the series level.
 - See the text for the most recent note.
 - Ability to set and enter Reason Codes from Administration Tool.
 - Ability to set if note is required after save data changes.
- User Workflow – allows users to change their status for each business cycle so that managers can see when all input is complete.
 - Ability to configure Workflow status from Administration Tool.
 - Ability to set permissions level to users
 - Modify individual user status
 - Viewing status of one or more users' status

4.0.203.11.1

- New logic in hierarchy permission
- Ability to set permissions in hierarchies created by user 'fxadmin' and used in the on fly hierarchies.

4.0.01.13.1

- Hierarchy Permission
 - Ability to set permissions in each hierarchy

4.0.10.14

- Export All in Summary view
 - Performance improvement in 'Export All' functionality.
- User Data Views and User Field Views
 - Ability to select a view assigned to them by the administrator and create an altered version.
 - Ability to delete User Data Views and User Field Views created by Users.
- Copy Year Settings in Data View
 - Ability to copy settings by year in the Data Views.
 - Reduction of the effort when need add a new year in a Data View.
- Aggregate Report
 - Support paging as Summary view
 - Ability to define the Items per page that will be loaded.
 - Ability to select the specific page that will be displayed.
 - By default display 25 items per Page.
 - Performance improvement:
 - Loading reports
 - Exporting reports
 - Ability to create report with more of 8 levels and opinions.
- Formulas Improvement
 - The Opinion lines that use formulas are not dependent on the current data view.
 - Ability to add virtual opinion lines in order to be used as target in the formulas.
- Static Hierarchy: Calculate Bottom Up using weighted average by opinion line
 - Compatibility with Calculate Bottom Up using weighted average by opinion line according feature in the Demand Management Engine V 5.2.10619.1 or above.
- Login Improvement
 - Ability to access application.
- On Fly Hierarchy
 - Support On Fly hierarchy in Detail view
 - Support On Fly hierarchy in Summary view
 - Support Date range
 - Support notes opinion line
 - Support Calendar Jump
 - Support View By
 - Support Formulas
 - Support Recreate base
 - Display the hierarchy type and last that was applied.

- Load the first detail level series automatically.
- Upgrade Tool
 - The Upgrade Tool controls the settings version loaded by Planning Portal. Also, it helps to customer/service team to upgrade older settings.
 - The Upgrade Tool allows manually choosing xml version and files to upgrade (web.config and CustomSettings.xml).
 - The Upgrade allows update from version 3.6.04.26 or above.
- Permission from On Fly Hierarchy
 - Ability to restrict the use of On Fly hierarchy.
 - Only the owner can apply On Fly hierarchy, the other users if has On Fly permission can see the hierarchy that owner applied to scenario.

3.7.2008.04.11

- Globalization
 - Support for localized labels in non English languages in new features
 - Support of format for numbers, currency and date format for non English languages in new features
- Option to enable/disable the rebalance feature in summary view.
- Launch view button on all of the data view settings tabs, browse data in 1 click.
- Support Custom Task
 - Ability to execute Custom tasks defined in the Demand Management Engine.
 - Ability to define the values in the arguments used in each Custom task.
- Apply/Remove Hierarchy
 - Ability to Apply/Remove a hierarchy in the current scenario.
 - Available in all pages where the Data View Settings is visible.
- User Permission
 - Ability to restrict the use of the new features Custom Task and Apply/Remove Hierarchy.

3.6.2007.04.26

- Security:
 - Support of Windows Authentication
 - Feature on/off to specific user
 - Direct access from URL to data
 - Support of secure sockets layer (SSL)
- Licensing
 - Feature on/off based on license
- Data Browsing
 - Direct Links
- From Homepage, browse data in 1 click.
- One click support for Aggregate Reports, Exceptions and Filters
 - Summary View

- Filtering in Summary View
- Export To Excel from Summary View
- Ordering by in Summary View
 - Detail View
- Display graph and data at the same time. Synchronization between data and graph.
- Hierarchical representation and easy navigation for aggregated data.
- Export to Excel both data and graph
 - Easy switch between views (1 click away)
- Globalization
 - Support for localized labels in non English languages
 - Support of format for numbers, currency and date format for non English languages
- Integrated Online Help
- Integrated RSS Viewer

Bugs fixed from previous versions

- Null Periods Edit: In previous version all NULL periods were read-only, now user can change the period values for NULL cells.
- Domain with Mass Adjust: In previous releases the Mass Adjust feature didn't consider Domain. Now the user can mass adjust to modify an Opinion Line, unless the domain is defined as read-only.
- Formula support: This has been enhanced by supporting parentheses and numbers. In earlier versions, the formula could only reference Opinion Lines, now we can have numbers as part of the formula. For example, $UerValue02 = (1 + ConvFactor01 / 100) * UserValue01$.
- Ability to Freeze Panes: In the data browser grid, a pane can be frozen so users can browse data easily.
- Filtering support: In older versions of PP, the user could not type in search criteria, she/he could only select the criteria from a combo box list. In the new version, the user can type it and put criteria that do not yet exist in the combo box list.
- More intuitive Resource Management: Earlier versions of PP were harder to manage PP resources such as reports and filters.
- Enhanced installation process: More intuitive installation process and improved documentation and troubleshooting. Knowledge base cases to prevent potential issues from appearing during implementation and/or installation of the system.
- Designed using the latest technologies available for Web Development and usage of third party controls for better user experience: This includes ASP.NET 2.0 and AJAX.
- Periods displayed in graph: In a previous version the periods displayed didn't match with the language settings in the locale.xml.
- Tree Level combo: In previous versions a user with all permission can only see the detail level scenario, instead of the whole tree.
- Database Upgrade: In previous versions the settings by user such as: Reports, Promotions, Exception's Assignments, Profiles and Permission were deleted. When the user executes a database's upgrade from a version 4.04.26 or above to the latest version, these settings will not be deleted.
- Hierarchy view fix: The detail view shows the scenarios with a hierarchy like Demand Management Engine. In previous versions some levels were not displayed.
- Filters: In previous versions sometimes the application failed when a filter within a scenario doesn't return values.

- Exceptions: In previous version sometimes the application failed when an Exception within a scenario doesn't return values.
- Detail View: In previous versions scrollbars are blocked in a monitor set to 1024x768
- Detail View: In previous version when the hierarchy was defined with fields which don't have data or when the fields have the same information the description of the levels appeared different than in the Viewer.
- Login Page: In previous versions the User Name and Password was enabled even when using Windows Authentication option.
- Upgrade Files tool: In a previous version the application doesn't display the upgrade tool.
- Tree Level: The Tree Level was not refreshed when the hierarchies are changed.
- The version in Add or Remove programs was not updated
- Data View Setting: when the user selects another hierarchy using On-Fly, the application takes too much time to create the levels.
- Detail View: when a user tries to change a view it has to refresh the whole page and loses the place in the tool.
- Hierarchy On-Fly: The application was summing the OL defined in the Bottom Up as WAVG. We are now calculating using the WAVG formula.
- Administration Tool: The application resets the Data View that was sorted by year.
- The order in which procedures are run after the PP saves data is incorrect.
- In the admin tool, the criteria column is not enabled unless the workflow level is "criteria" but once that is changed the criteria column is not enabled until the user clicks somewhere else.
- When going into the detail view there is a line that is supposed to be read only but it is not highlighted accordingly.
- Sometimes when data is loading and it takes a while there is a message saying there is no data to display and after a while the data is displayed.
- The headers for the note window are incorrect when using the Classic View.
- In the PP Admin tool, by default there is only a "default" if the user tries to add new reason in a row and then save those the last one doesn't get saved.
- There is an error displayed when you click the save, cancel or refresh buttons and no data is displayed.
- The application displays an error message when I select another exception of drop down list.
- In the locale editor, the folders (Admin Tool and Planning Portal) are not shown as selected when they are actually selected, this is confusing.
- The message shown when deleting a language in the admin tool locale is incorrect.
- In the admin tool, if a user adds a new virtual formula, they cannot delete that record if it does not have a formula.
- Sometimes the application doesn't save all changes in the settings in sections: Data Views, Field Views, Hierarchy Permission, Filters and Exceptions.
- The status column in the locale configuration should have two possible values: "Translated" and "Not Translated"
- The message when selecting incorrect path for an image in locale is incorrect.
- The application displays the Criteria field twice empty when the type field contains NULL.
- The Users Data View shows the OLs that have Not Shown as Visibility or those are not selected in Users Data View when the User selects On Fly hierarchy.

- The Summary View shows the fields that have “Not Shown” as Visibility in Field View when the User uses On Fly hierarchy.
- The Locale Configuration doesn't show “Displays Set” option in Observations Fields Section and Series Fields Section.
- The User Workflow only displays the workflow created according to Criteria selected and not shows the created by the user.
- The application does not display an indicator that the application is working when you load the views.
- Record focus consistency with and without hierarchies. For series list without hierarchy, the user has to click on the icon but not the series itself. For the hierarchy series view, the user has to click the series and not the icon.
- Changing series attributes without changing observations - the system does not save the changes.
- Windows Authentication - The application doesn't validate the User according to windows authentication.
- Windows authentication, it sometimes won't load your scenarios when the page loads.
- Locale Configuration - remove images of previous versions and rename logo image like image used in 5.5
- Upgrade Tool- The application displays that Web.Config is corrupted.

Installation

For Installation Details please refer to the Administration Guide.

Post-Installation Configuration

In order to use Planning Portal 6.0 on Windows Server 2003 or above, the following must be configured on the Web Server:

- 1 Enable ASP.NET in the IIS Manager on the Windows Server computer
- 2 Add the .jse to the MIME Type in IIS metabase
- 3 Install Excel 2003 or higher -> Primary Interop Assembly
- 4 Planning Portal license relationship with server hardware configuration

For enable the Excel is necessary the following steps:

Open Component Service -> DCOM Config

This should load the “Component Services” MMC (you can also load from Administrative Tools - Component Services”

Expand “Component Services” -> “Computers” -> “My Computer” -> “DCOM Config” item

Select the “Microsoft Excel Application” item.

Right click -> Properties

Select the Security Tab

Under “Launch and Activation Permissions” and “Access Permissions” select the “Customize” option

Click the “Edit” button

On the dialog that is displayed enter “ASPNET” and the account that the Application Pool is running by default “Network Service”, as the account name (make sure location is set to the name of the computer that IIS is on) on Windows XP in the case of Windows 7 or higher, you need to enter “Everyone” as the account name,

Click the OK button

Now make sure you select the following options for the “ASP.NET Machine Account” or the account that is the application pool identity (by default Network Service)

- Local Launch: Allow
- Remote Launch: [blank]
- Local Activation: Allow
- Remote Activation: [blank]

In Select Identity tab >Select interactive user >select ok

Planning Portal license is bound to hardware configuration of the server. If the configuration change, such as adding a new hard drive or removing a network card, that could require a new license key. Demand Management Engine 6.1 Release Notes

Demand Management Engine 6.1 Release Notes

These Release Notes provide information on the latest enhancements to the Demand Management Engine (DME) as a part of the Planning software suite. This particular release updates the DME to version 6.1.

The DME 6.1 Release Notes provides information on the following:

- Product Support
- New Features
- DME 5.5
- DME 5.1 and above
- Limitations in DME 6.1 and above
- Bug Fixes in DME 6.1 and above
- Troubleshooting in DME 6.1 and above
- Installing DME
- Uninstalling DME

Product Support

The DME software suite is designed to support cost effective and comprehensive Supply Chain Planning Solutions and Methodologies. DME includes the Admin Tool where you set up data and configure scenarios. The Admin Tool provides a mechanism for developing forecasts. The Viewer is the primary user interface for the results of generating a forecast. In the Viewer you can edit parts of a forecast, use several different Managers, manage Profiles and launch other applications such as Admin Tool, Batch Scheduler (BS) and Planning Portal. The BS enables you to automate DME tasks that would normally have to be performed manually, such as adding new historical data, updating information, running exceptions or customized tasks, and forecasting.

New Features

- 1 Custom Task:** allows saving without specified values in string parameters.
 - The application will allow save the CT and run the CT without specify a value in a string parameter (time or varchar parameter)
 - If the user replaced manually in the database the " by null in the string parameters, the application will execute the procedure with the ".
 - The application will NOT allow save the Custom task and run the custom task without specify a value in a numeric parameter (int, bit).
- 2 Year view:** Ability to see year view chart in lines.
- 3 Dashboard:** Improvements Graph Filter View
- 4 Series Forecasting:** This permission controls both the user's ability to modify the current forecast methods split into two different permissions.
 - a Modify Series Forecast Method**
 - This will allow the user to change the forecast method
 - b Add New Forecast Method Opinion Line.**
 - This will allow users to add a new forecast method and corresponding opinion line

- 5 On fly Hierarchy: Make that the on fly check hierarchy appear selected by default.
- 6 Dashboard: Dashboard: Ability to show in several statistical charts the data stored in the Series attributes.
 - The application provide two views of the data:
 - Chart: summary of each value in the series attribute;
 - Graph: 6 different types of chart can be selected in order to show the data.

Additionally the Dashboard view provides the ability to filter data based on series information displayed in each chart

7 Data View Manager:

Ability to create several Data views associated with a Graph View at user level.

The user can define which Opinion Lines of the Data view will be displayed in the Graph View.

- 8 Reset UI Layout: Have been created some templates with most used panel's distributions. Ability to select and apply the created templates into the viewer.
- 9 Exceptions:
 - Performance Improvement running exceptions
- 10 Event Manager: Provide demand planners a way to mark past and future business events that impact sales. Events can have a positive or negative effect on demand and tracking them can improve forecast accuracy. Event feature provides the ability to:
 - Make an adjustment to the forecast based on an event occurring in the future and
 - Marking a past event, calculating the impact, and copying that impact to a future period.

When the Event Manager is opened the user can see:

- Event View
- Event Index View
- Event Series View
- Event Settings
- Lift Analysis
- Margin View
- Event Summary View
- 11 Scenario Data Transfer: Ability to transferred data between two scenarios that are configured with different cycles per year. Ability to define how values are aggregated and disaggregated across time and series attribute.

The scenario data transfer feature contains:

- Calendar Manager
- Calendar Conversion
- Series Mapping
- Scenario Data Transfer
- 12 Summary View: new view where can be displayed series attributes and Opinion lines in the same view. Ability to apply a hierarchy using a different grouping fields reusing the current one or creating a new one.

- 13** Use Display set From: Allows selecting a scenario with a display set and the features displays the fields according with the display set. The feature is available in Admin Tool.
- 14** Conversion Factor: provide the ability to the users apply a Conversion Group. The group design identifies several opinion lines to convert and indicates which calculation is used for each.
The conversion feature is available in the admin tool and viewer and it contains two options:
 - Conversion Factor
 - Conversion Group
- 15** Observations Notes: This enhancement is to allow notes at the observation level and for static/on-fly hierarchy levels to be entered, stored and viewed. Features include:
 - The ability to see if Notes already exist at the observation level.
 - Visibility of the text for the most recent Note.
 - Click on a cell to see the Notes history at the observation level and enter a new note
- 16** Admin tool: The new tool contains base functionalities such as Scenario Manager, Filter Manager, Data Domain, Data Permission, User Manager, Exceptions, ABC, Display Sets, Conversion Factors, Custom Task, Hierarchy Manager, Event Configuration, Event Category, Calendar Manager, Calendar Conversion, Series Mapping and Scenario Data Transfer.
- 17** Support Active Directory: Provide the ability to define an domain account and Save the state, so the next time the user won't need to uncheck or check
- 18** Support password policy: Allows to the users to change the password while the login process is running.
- 19** Notifications: Support send notifications when one of the following events happen:
 - User populates his/her DTL scenario.
 - User commits his/her DTL scenario. Scenario has been marked as connected.
 - Forecast error report.
 - Engine Finished forecasting a Living Master Scenario.
 - Batch process result.
 - A scenario has been marked as disconnected.

Limitations

- In the scenario editor the use display set feature doesn't apply.
- 20** Technology Migration: All the features in DME have been migrated to .Net technology. This migration allows users to take advantage of the benefits of the technology, such as improved interface, controls, capacity, and internationalization support.
- 21** Admin Tool: The new tool contains base functionalities such as Scenario Manager, Filter Manager Exception Manager, Conversion Manager, User Manager, Data Permission Manager, Data Domain Manager, and Localization.
- 22** Conversion Groups: Gives users the ability to apply a Conversion Group. The group design identifies several opinion lines to convert and indicates which calculation is used for each.
- 23** Localization Editor: This component is used to change the language of messages, tables, other properties, Images and icons. For each language configuration, DME creates an XML file, and if the file is not found for a particular language, English will be used as the default language.
- 24** Profile Manager: Provides the ability to create, edit, save, and delete Profiles inside the Viewer.

- 25 Lifecycle Forecast Method: Provides the ability to define a Profile as a part of the forecast method Lifecycle.
- 26 Filter Editor: Implemented a new design that will allow creating, editing, and deleting filters using either a basic or Advanced Mode.

DME 5.5

1 Forecast Log Error

If for some reason a forecast execution fails, the application will display a window with the errors where the user can view:

- The series that failed in the forecast process
- The number of series that had problems in the process
- The forecast setting mapped with the series that had the problem.

Additionally the error message will be saved in the Event Log.

2 Series Level Forecasting at Aggregate Level

- Ability to utilize different forecast methods for individual series at an aggregate level.
- Ability to execute a forecast with the new forecasting settings.

3 Disconnect Mode

- Ability to execute series level forecasting in Disconnect mode.
- Ability to use new note feature in Disconnect mode.

4 Series Level Forecasting

The ability to utilize different forecast methods for individual series, or a group of series, is now available. New forecast methods can be added or modified for one or more series from the DME Viewer. There is a new tab in the user interface in the Misc. Window called "ForecastX Methods". In addition, there is a new Statistics tab in the results area where methods can be compared.

a Series Level Forecasting: Statistics Storage and Display

Expands the number of forecasted opinion lines. Instead of one set of statistics, the application will generate multiple forecasts.

Dependent forecasting (event modeling, Census X-11, multiple regression, stepwise regression, etc.) is available in the DME. Series Level Forecasting is expected to make using these methods easier. These forecast methods generate additional statistics that will be stored and displayed differently.

b b.ForecastX Method Tab (MISC)

Display series / opinion line level statistics in a new tab in the Misc. Window called "ForecastX Methods".

c c.Dependent Forecasting

Dependent Forecasting is a general term describing forecast methods utilizing variable data sets. These methods include (but may not be limited to) Event Modeling, Census X-11, Multiple Regression and Stepwise Regression.

d d.Notes

This enhancement is to allow notes at the series and static/on-fly hierarchy levels to be entered, stored and viewed. Features include:

- The ability to see if notes already exist at the series or observation level.
- Visibility of the text for the most recent note.
- Click on a cell to see the notes history and enter a new note.

Limitations

- The Notes are not synchronized between Connect and Disconnect modes.

DME 5.1 and above

This section provides information on features found in DME 5.1 and above:

Notes behavior:

In addition to the enhancements to DME 5.0 (see below), the Notes view functionality has been changed for DME 5.1. First, the way that the notes are sorted is different. For this new version the Observation Notes have been sorted as follows: Series note first, Historical Observation notes second and finally Forecast Observation notes; in that way it's going to be consistent with the order which Data View or Demand Data are sorted. In the previous version, Observation notes were sorted in a different way putting forecast notes before historical notes.

Finally, one of the changes that have improved Notes View behavior is when the user modifies or just selects an observation in the Data View or Demand Data, the corresponding observation note is focused automatically in the Notes view. In the previous version (5.0), the user had to move into Notes View searching for the period which he wanted to add a note.

Graph view:

In version 5.1. The user will be able to choose which periods have to be drawn and shown as a graph. By default the periods that are chosen by the user are going to get the current “Keep Range” behavior keeping the values of the combo boxes (where you define the periods) when the user switches into another series.

Actually in the released version 5.0 there is a “Keep Range” Checkbox that the user has to check if “Keep Range” behavior is desired. This feature has been changed and now Keep Range is the behavior by default and the checkbox disappears. A Status button and an action button (“Show All”) have been developed; this button basically works as Zooming out and all periods of the series will be included into the graph

Customizable UI:

- 1 The extended view is now a panel which is dockable and can be called from the View menu “Multi Series View”.
- 2 Data View, Demand Data, Graph View, Series Information, and Demand Information window have been improved and are now dockable.
- 3 Notes view has better UI and is now dockable.

The notes are now shown in a grid view, so the cells can be edited in multi-line mode. You can resize the row to have a better view and easily edit the note. If you double click the note cell an editor will be displayed for modifying the note.

The “Jump to Note” context menu used in the previous version has been replaced by a filter; in this way you can easily navigate to the notes or find specific text or period.

- 4 All the above views can be turn on or off from the View menu.

- 5 In the Graph view you can select the type of graph that you need and also the color of each opinion line.
- 6 In Year-Over-Year view you can now see colors of the opinion lines which show that they are being compared. Note: these colors don't necessarily show which opinion lines are history or forecast.

New functionalities in the “Select Scenario” window:

- 1 Living Master mode: with the appropriate permission and other settings, each user can view and edit his portion of Living Master scenario directly.
- 2 Apply Filter: a scenario can be opened with a filter applied.
- 3 On-fly hierarchy: allow the scenario to be opened with a dynamic hierarchy and constrained by the selected filter.
- 4 Concurrency: the same scenario, such as Living Master, can be opened by different users simultaneously with different on-fly hierarchies applied to them.

Filter usage enhancement:

- 1 Count: returns the count of selected series. The feature is in the filter definition and any place filter is used, such as opening scenario or populating detail scenario.
- 2 Edit: allows a user to edit and create filter not only in the Engine Management tool, but also any place filter is used, such as opening scenario or populating detail scenario.

Other enhancements:

- 1 Rebalance: It can be based on selected series.
- 2 Refresh: The working series can be refreshed with shortcut F5.
- 3 Conversion Factor enhancement: The conversion factor definition and usage are separated for consistency.
- 4 History Values: user can select how many values of history to see in the Data View or Demand Data.
- 5 Demand Data View doesn't show forecast values in the “Value” opinion line.
- 6 If you change a value in “Fvalue” opinion line you won't see the change in “Value” opinion Line.
- 7 DTL scenario population: a new option to determine which Living Master is used to populate the detail scenario.
- 8 Many other general UI improvements.

Limitations in DME 6.1 and above

The following section provides a brief description of limitations associated with the latest versions of DME:

- 1 Regarding Performance Improvements in 6.1
 - a The performance improvement in the Rebalance feature is only available for On-fly hierarchies using On-fly rebalance and in top down allocation.

- b** The performance improvement in Static hierarchy is visible during the hierarchy application process.
- c** The performance improvements will be visible for large scenarios with a hierarchy that have more than one level and on a multi-core machine.
- d** In on-fly hierarchies with one level the rebalance improvement is almost negligible.

2 On-fly hierarchy:

- a** The feature only works with SQL 2005. It is disabled if the database server is SQL 2000 or below.
- b** Overwrite Adjusted Forecast: the No option is always ignored. On-fly or static hierarchy always overwrites adjusted forecasted.
- c** Allocation Type and Seasonal Options: these two options are ignored. All opinion lines use the options in the TD (Advanced).
- d** If you change the “Other OL allocate by” setting, you have to close the scenario and reopen it in order to apply the new settings. If not, an error message will be displayed.
- e** Update negative to Zero: only works on top down rebalance. It is ignored when using bottom up.
- f** Rebalance on demand at the detail level is disabled. The user can refresh the parent to recalculate values from the latest children changes.
- g** If a new series is added to the scenario, it will not be shown in the on-fly hierarchy until the base has been recreated. Only the owner of the scenario can recreate the base.
- h** A high level with on-fly hierarchy doesn't show values changed in currency mode. This happens because in on-fly hierarchies the system does not have the price because the series is aggregated. Future versions will support it.
- i** The following do not support the following functionalities for the aggregated series in an on-fly hierarchy:
 - ABC Analysis
 - Apply Event
 - Apply Exception
 - Clone/Rename
 - Copy/Move to other Scenario
 - IM calculations, such as DRP
 - Profile (Life Cycle) Forecast
 - Reforecast
 - Retagging
 - Source series in Same As
- j** When you click an aggregate series in an on-fly hierarchy, this series is calculated so, there is a reference of the time it could take depends of the number of series in the lowest level with 1Gb in Ram:
 - For a High level with 30000 sub series. It takes 7 minutes
 - For a High level with 20000 sub series. It takes 5 minutes
 - For a High level with 2000 sub series. It takes 2 minutes

On fly hierarchy/Bottom Up: Wrong values are displayed when the OL defined as Base Opinion Line is not in the Bottom Up section.

An Opinion Line is summed up when it is not in the Bottom Up section but is in the Top Down section, so the user will see this values sum up in the UI.

3 On-fly Rebalance:

When you apply the Re-forecast selecting the 'Whole Tree' option in a scenario with static hierarchy and on-fly rebalance, the on-fly rebalance won't be triggered.

4 Reforecast in Retagging:

In order to execute reforecast Retagging use the DME server and the new structure with Forecast settings. The entry in table tbl_fx_jgd_feature is not used anymore.

5 New Series

When you create a new series in a scenario with event flags, the flags will not be copied.

6 Dates

When selecting as range the value of DATE from base unit, the adjustment cannot be done.

When a DATE is loaded from a data source:

The description on the observations is not shown in order.

On Data View, Year mode doesn't show the historical values and the forecast values doesn't show with gold.

7 Copy/Move

For this feature we recommend using only detail level scenarios.

8 Others

If you need to execute any trigger over the series table, you will need to close and re-open the scenario in order to see changes.

The behavior of the copy/paste is different of the previous versions of the DME. In this version the behavior is more similar to Excel.

SQL Server Express

In default SQL Server Express installation the service run using "Network Services" account, this account by default has restricted permissions, we can change to use "Local Account" to run SQL Express using the same permissions as the logged user or another account with more permissions.

Custom tasks and disconnect mode

During the download process each stored procedure used by a custom task is recreated (and related stored procedures) to the client database. In order to be able to recreate, the stored procedures should not be encrypted. The stored procedures should use tables, views and function defined by factory, if one stored procedure use any additional non factory object, this object will need manual recreation in the client database.

Bug Fixes in DME 6.1 and above

DME 6.1

- 1 The app not displays all the ol's available in summary, demand data, data view
- 2 After load a series the refresh icon not disappears.
- 3 Transpose View, need solid black line between History and Forecast and just like when in vertical view
- 4 Transpose - Arrow keys should work in the direction of the arrows.
- 5 Transpose, the tab does not work to move to the next cell in an opinion line
- 6 When the focus is at the first or last period of any column the app change the values
- 7 Graph Filter View: can we make the Clear Filter the first button on the left so if anything disappears due to the window size it would be the Remove All button
- 8 Data View: When I add it, the new Data view does not use the History at all
- 9 DRP: After running DRP, the multi-series view should refresh.
- 10 Multiseries view: when edit values and run a custom task the app displays an exception.
- 11 Ability to load all icon & statistics indicators in Multi Series view.
- 12 DME is not grouping correctly when the name of a series has blank spaces.
- 13 The filter manager won't accept a check box that is blanks. Try filtering on an exception result.
- 14 The app shows an error message when apply an on fly hierarchy and the series selected by default has notes.
- 15 The app show in a different levels the headers and column values.
- 16 The app is rounding total and quarterly in a different way to the column.
- 17 For some reason the application do not show the conversion symbol '?'
- 18 The app not allows creating new database in polish.
- 19 Selecting Summary view without a hierarchy shuts the DME down.
- 20 Summary view does not use the mandatory check requirement for notes.
- 21 Applying Conversions in the Summary View result in missing Quarter values and shifted column display.
- 22 Adding multiple attributes in Summary View does not size column header appropriately.
- 23 If a user creates a filter in the open scenario window the Filter is given an owner of fxadmin instead of the user who is logged in.
- 24 The application displays an error message when hide the data view and made login with other user
- 25 The summary view displays error messages when the view contains additional periods that the reopened scenario
- 26 Can't expand column width on Notes Editor when close and reopen the note editor
- 27 When edit values in series information (multiseries view) and press f5 the app is locked

Troubleshooting in DME 6.1 and above

- The Pivot Report Wizard option with flag “ready to export” selected doesn't show values of series with the active flag but it shows value on total row.
- In this version, this is the behavior. You need to configure the area section properly. In general, page area has “Origin”, “UserID”, “Scn”, and Row has the series attributes, and Column has date information, and the data area has opinion lines. Note that Row and Column can switch.
- When execute MSU and Exceptions in the BS, the values are not updated in the DME using the F5. It is necessary close and re open the scenario in order to see the changes.
- After an Upgrade to DME v5.0, the on fly rebalance feature in DTL scenario will only work after the DTL scenario has been re populated
- The Create/Upgrade database shows an error message with SQL Server 2008 x64 bits
Go to C:\Program Files (x86)\Microsoft SQL Server\90\Tools\bin\ and verify that the executable file SQLCMD.exe exists.
Go to the HKEY_LOCAL_MACHINE\SOFTWARE\Wow6432Node\Microsoft\Microsoft SQL Server\90\Tools\ClientSetup in the Registry and create a new String Value 'Path' with value C:\Program Files (x86)\Microsoft SQL Server\90\Tools\bin\
Notice that the root value 'C:\Program Files (x86)\Microsoft SQL Server\90\Tools\bin\' depends of the drive used in the SQL installation.

Installing DME

This section provides information on installing the latest DME version.

- If you are upgrading your DME installation from a DME 5.0 or below, make sure you uninstall all previous DME versions first (view the Uninstalling DME section).
 - Make sure that none pivot report from DME is opened in Excel, this can cause a conflict when try to install.
 - Run DME V.6.1 installer, follow the wizard's steps.
 - Select complete installation in order to install the major components of the DME: Admin tool and Viewer.
 - The installer will ask to you to support disconnect mode, if you select support disconnect mode, the installer will:
 - If you don't have a local SQL Server 2005 installed, you should install SQL Server Express, in the SQL server authentication mode select the option “Mixed Mode” and specify the password for the “sa” user.
- Note** In default SQL Server Express installation the service is run using “Network Services” account. This account by default has restricted permissions; we can change to use “Local Account” to run SQL Express using the same permissions as the logged user or another account with more permissions.
- Enter the connection settings for the disconnect mode database.
 - At the end of installation you must upgrade the disconnect database or create a new one.
- Other DME applications, such as the Inventory module, or Retagging should be installed later.
 - Inventory Management: After installing the new version of IM, please go to your entities and make a refresh of the stored procedures.
 - If a database for DME 6.1 is restored or re-attached to a different server, you will need to execute some steps in order to make the database work. (see the DME Administration Guide)
 - Configuring the Default Mail Profile

- Call to store procedure: uspDmeConfigureMailSettings, you must to pass the following parameters
 - User, this is the User name Mail Account
 - Password, this is the corresponding password to User
 - SMTP Server address, server which have the SMTP service

Note The installation path for the license will change from “C:\Documents and Settings\All Users\Application Data\QAD\Lic” to “C:\ProgramData\QAD\Lic” if you are in Windows Vista. Also, in Windows Vista you will need to run the installer with “Run as Administrator” option and the application can be used by all the users.

Uninstalling DME

This section provides information on uninstalling the DME.

Note Make sure you have logged in with system Administrative rights.

If you are upgrading your DME installation from a DME 5.0 or below make sure you uninstall all previous DME versions first. To do this, follow these steps:

- 1 Navigate to Control Panel>Add or Remove Programs

Note Ensure all DME applications are closed before you uninstall any of the DME components.

- 2 If there are any other DME applications installed in your system, such as the Inventory module, or Retagging these must be uninstalled first before uninstalling the core DME applications.
- 3 To uninstall a version of the Batch Scheduler .NET prior to version 4.6, please look at the corresponding Release Notes file. These versions had the Batch Scheduler Windows Service as a different entry in the 'Add or Remove Programs' and the Windows server MUST be uninstalled first. If uninstalling Batch Scheduler v4.6 or later click the Change/Remove button of “QAD - Demand Management Engine - Batch Scheduler .NET”
- 4 Click the Change/Remove button of “QAD Planning Suite-Demand Management Engine V5.5”

You have successfully uninstalled DME.

Note If you uninstall DME v.6.1, and you had any other applications like the ForecastX Wizard, it is not necessary to repair or reinstall those applications.

DME Reporting Release Notes

This document provides the latest information on DME Reporting feature.

System Requirements

The list below details the required server hardware to install ForecastX™ Reporting.

Hardware

Hardware	Minimum	Recommended
CPU	Pentium III or higher	Pentium 4 - 2.0 GHZ
RAM	512 MB	1GB
Hard Disk	30 MB	100 MB*

Software Media¹

The list below details the required software to install ForecastX™ Wizard.

- Microsoft Windows 2003/2008 Server or Windows XP/Vista/7 with the latest service pack applied.
- Microsoft SQL Server 2005/2008 with the feature Reporting Services enabled and the latest service pack applied.
- QAD Planning Suite - DME 6.1

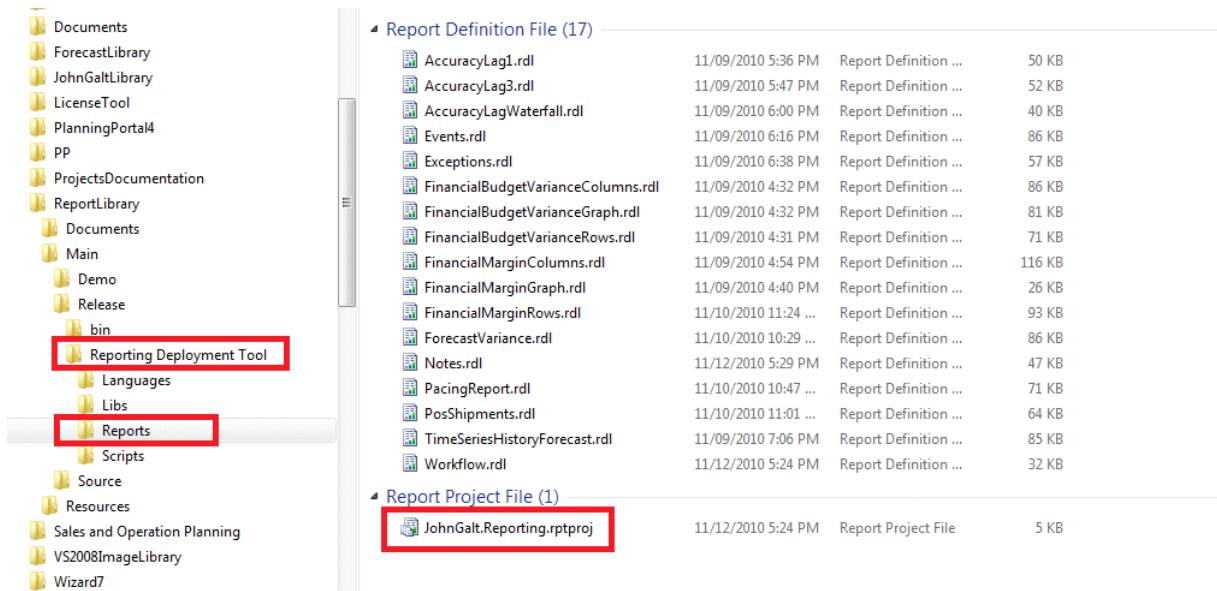
Installing Reporting

- 1 Make sure the user is an administrator.
- 2 Verify the DME database has latest update 6.1
- 3 Open the Reporting Services Configuration Manager and verify connection to the Web Service URL and to the Report Manager URL.
- 4 Click on JohnGalt.Reporting.AppWin.Deployment.exe
- 5 Fill database information and Web Service URL for reporting service.
- 6 Click install.
- 7 In the Deployment Wizard Completed window, click Finish.
- 8 The DME Reporting Feature is now installed on the server.

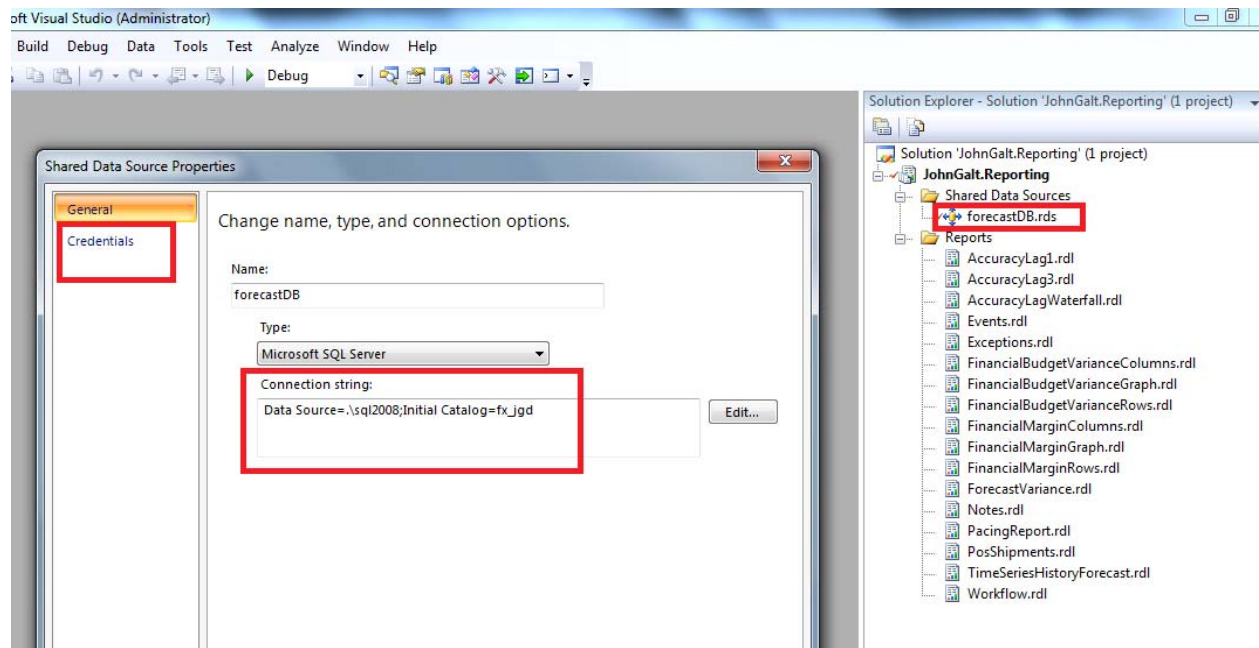
The client functionalities for DME Viewer and Planning Portal are installed with their own installer.

Customizing reports

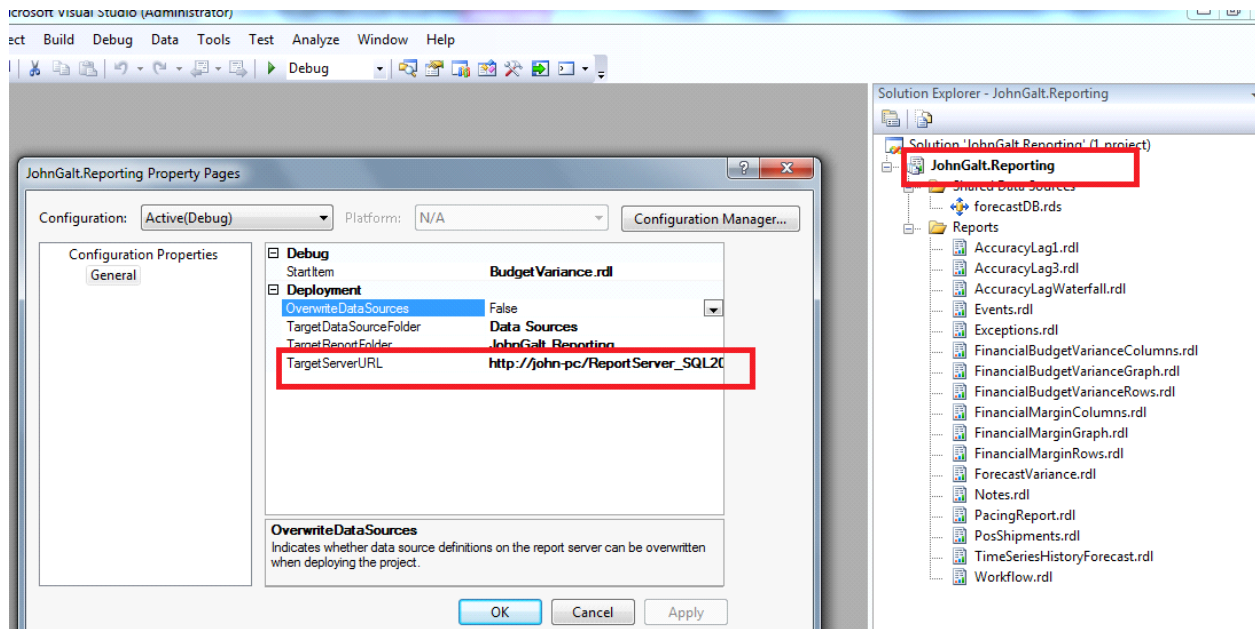
In order to customize the reports, you can use the reports definitions located in “Reports” folder included in the deployment tool.



Once you open Report Project File, it will load the visual studio with the reports. Before you begin modifying the reports you need to change some settings according to the machine. Double click in the data source “forecastDB.rds” item to change properties like connection string and credentials to point to the database you are working with.



Finally you need to change the Report Server URL to point to your Reporting Services installation.



Setting network credentials

When DME Viewer is installed in client machines, it requires configuring the credentials for accessing the reporting services from the network. To accomplish this, the table 'tblRsReport' need to be updated with the following SQL sentence:

```
update tblRsReport set
TX_REPORT_SERVER_USERNAME='rsuser',TX_REPORT_SERVER_PASSWORD='rsuser'
```

Where 'rsuser' it's a local user in the server machine where reporting services is installed, and it has access to the report manager.

Database Report Configuration Support

There is support to configure the fields used in the reports by adding new entries in the tblRsReportConfiguration and specifying the associated report ID or scenario ID. But the originals installed in that table should not be modified.

Special characters in filters

When there are commas in the fields of the filters, reporting filter control doesn't allow it, so in the SQL query we are masking every 'comma' with a combination of characters, even do the filter control shows normally the comma. So there's a SQL function where the consultant implementing reporting need to change the mask if necessary, the function is 'fn_rpt_get_comma_mask'.

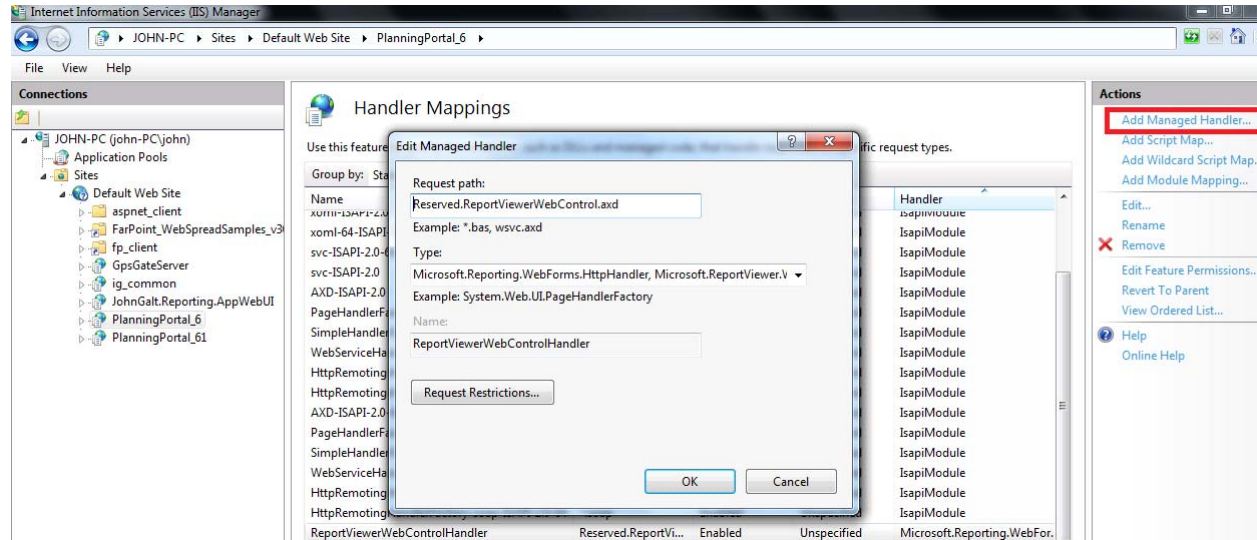
SQL Server Reporting versions compatibility

The deployment tools by default will install reports developed in SQL Server 2005 version of reporting services, which are compatible with superior versions. For reports developed in SQL Server 2008 version of reporting services there is a SQL2008 folder under Reports which contains those reports and associated database scripts which must be manually deployed in case installing over a SQL Server 2008.

Troubleshooting

Configuring Reporting in Planning Portal

Please add a Mapping Handler for the virtual directory of the Planning Portal



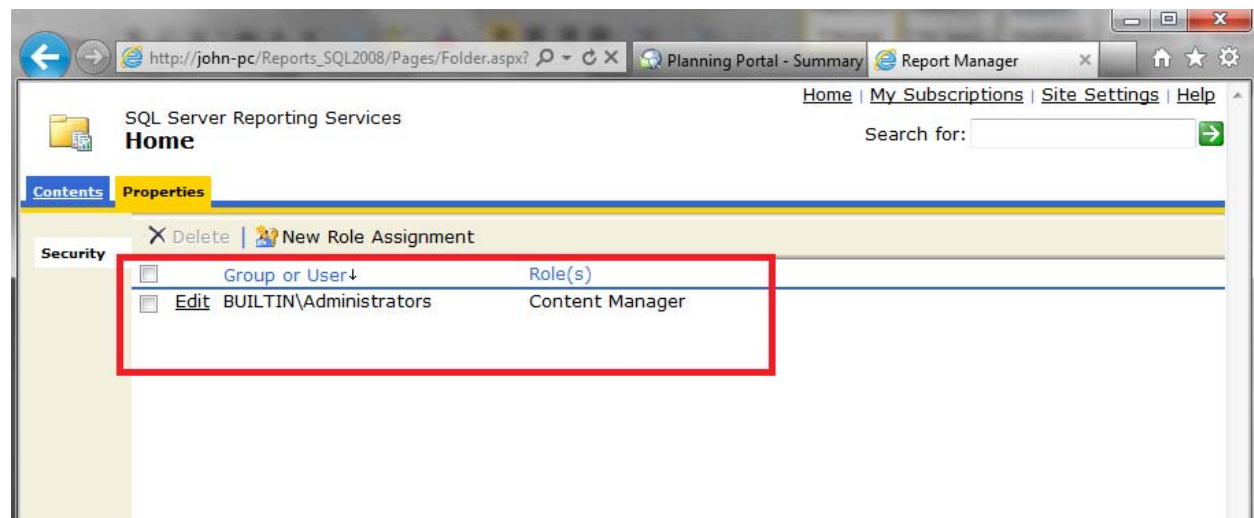
Reserved.ReportViewerWebControl.axd

Microsoft.Reporting.WebForms.HttpHandler, Microsoft.ReportViewer.WebForms, Version=9.0.0.0, Culture=neutral, PublicKeyToken=b03f5f7f11d50a3a

ReportViewerWebControlHandler

Configuring user permissions in SQL Reporting Services

In order to run the deployment tool, please make sure the windows user account is already configured in the SQL Reporting Manager with the appropriate permissions as is shown in the figure below:



If the windows account user or group used to run the deployment tool is not listed in the security of the SQL Reporting (In Home Folder) please use the option in the toolbar “New Role Assignment” to configure the appropriate permissions for the user or group.

Database

TABLE tblRsReport

This table allows to define the reports in the system.

FIELD NAME	TYPE	DESCRIPTION
KY_REPORT_ID	int	ID of the report
TX_NAME	nvarchar	System name of the report
TX_DESCRIPTION	nvarchar	Description of the report
TX_REPORT_PATH	nvarchar	SQL Reporting Services path of the report
TS_REPORT_SERVER	nvarchar	SQL Reporting Services server
TX_REPORT_SERVER_USERNAME	nvarchar	SQL Reporting Services server username
TX_REPORT_SERVER_PASSWORD	nvarchar	SQL Reporting Services server password
FK_REPORT_CAT_ID	int	ID of the report category
CD_OWNER	int	ID of the user that owns the report
DT_LAST_UPDATE_DATE	datetime	Last update date
CD_LAST_UPDATE_USER	int	Last update user
FL_SUPPORT_GROUPING	bit	System flag to indicate to the stored procedure responsible for getting the data ‘usp_rpt_ds_main’ if the report support grouping (most of the standard reports support it), custom reports should set this flag according to their implementation.

TABLE tblRsReportConfiguration

This table allows to configure the fields used in the reports

FIELD NAME	TPYPE	DESCRIPTION
FK_REPORT_ID	int	ID of the report
FK_SCENARIO_ID	int	ID of the scenario (by default is 0, which means this apply for any scenario). When this ID is specified the setting will apply only for that scenario.
TX_REPORT_ALIAS	nvarchar	Alias in the report design for the labels of series attributes or opinion lines
TX_FIELD_NAME	nvarchar	Physical field name associated to the report alias, when the field DS_TYPE = 1 or DS_TYPE = 2 it must not include the table name, if DS_TYPE is NULL it should include the table name like Series.UserValueXX
TX_FIELD_LABEL	nvarchar	Label of the field name, this setting can be used in case there's not display set for the fieldname specified.
DS_TYPE	int	This setting specify if it's a series attribute (DS_TYPE=1) or an observation field (DS_TYPE=2)
BL_FILTER	bit	Flat to define a field as a filter in the report.
CD_GROUPING_ORDER	int	(Pending to implement) This setting specifies the sequence in the SQL group by clause.
TX_GROUPING_FUNCTION	nvarchar	This setting specifies the group by function used in the SQL group by clause.
DT_LAST_UPDATE	datetime	Last update date

TABLE tblRsReportConfiguration

This table allows to configure the fields used in the reports.

FIELD NAME	TYPE	DESCRIPTION
KY_REPORT_CAT_ID	int	ID of the report category
TX_NAME	nvarchar	Name of the category
TX_DESCRIPTION	nvarchar	Description of the category
DT_LAST_UPDATE_DATE	datetime	Last user date
CD_LAST_UPDATE_USER	int	Last update user

TABLE tblRsReportSecurity

This table allow to set permissions at user level for each report, additionally allow to set options for each user-report combination.

FIELD NAME	TYPE	DESCRIPTION
FK_REPORT_ID	int	ID of the report
FL_POPULATE_FILTERS	int	ID of the user
FL_POPULATE_FILTERS	bit	This flag indicates if the report should select by default all the items in the filters
FL_USE_GROUPING	bit	This flag indicates if the report should load each hierarchy level on demand, using grouping functionality. This setting improves performance when it's used.

TABLE tblRsReportScenario

This table is used to allow to set permissions at scenario level for each report

FIELD NAME	TYPE	DESCRIPTION
FK_REPORT_ID	int	ID of the report
FK_SCENARIO_ID	int	ID of the scenario

Reporting Releases

This section provides information about work items resolved in each release:

RELEASE 6.1.21215.1

- 24860 Reporting 6.1: the application displays “Parameter 'report_id' does not exist on this report” when you try open Notes report, Workflow Reports or User Permission
- 24861 Reporting 6.1: The Budget Variance Report in Rows displays 'Period' as Criteria field

RELEASE 6.1.21214.1

- 24815 Reporting 6.1 - Allow multiple reports to use the same RDL file

RELEASE 6.1.21129.3

- 24664 Reporting 6.1: Grouping -The reports display “The 'filter004' parameter is missing a value” when you open a Null field

RELEASE 6.1.21125.1

- 24646 Reporting 6.1: Grouping - the application doesn't return data when you open an attribute where the series that contains comma or apostrophe characters

RELEASE 6.1.21123.1

- 24634DME 6.1: Report Manager - the application doesn't remove the attributes, filter and opinion lines after you created the report

RELEASE 6.1.21102.1

- 24411Reporting 6.1: The reports display an error message

RELEASE 6.1.21101.1

- 24134Reporting 6.5: The reports are not showing the series that are set as read only in the data permission

RELEASE 6.1.21031.1

- 23449Reporting 6.5: The reports don't work with just one series's attribute
- 23999Reporting 6.5: The application displays “Invalid object name 'tblDatapermissionuser'.” when you try generate a report
- 24019Reporting 6.5: Notes Adjustment Report - the report displays notes that belong to other scenario
- 24020Reporting 6.5: Notes Summary Report - the report displays notes that belong to other scenario
- 24134Reporting 6.5: The reports are not showing the series that are set as read only in the data permission

RELEASE 6.1.20930.1

- 23951Report 6.5 - Support the new data permission functionality

RELEASE 6.1.20928.1

- 20809Reports: The reports don't show all data

RELEASE 6.1.20802.1

- 23079Reporting 6.1: User Permissions - the report does not have the title header
- 23082Reporting 6.1: Report Manager - the application save the change of a report for all the scenarios when you use the save as
- 23083Reporting 6.1: Notes Summary - the report doesn't displays the scenario name when the note is entered manually
- 23084Reporting 6.1: Report Manager - the application displays attributes field instead of observation field when you add a new OL
- 23085Reporting 6.1: The settings customized are deleted after run the deployment
- 23088Reporting 6.1: Report Manager - the application doesn't select the new Report created with New
- 23090Reporting 6.1: ForecastAccuracyCalculations - the application displays “A constant expression was encountered in the ORDER BY list, position 1
- 23091Reporting 6.1: the headers must be freezed - the header titles (Attributes) appear on the series
- 23092Reporting 6.1: Report Manager - The application doesn't display the warning message when you select other scenario without save changes
- 23093Reporting 6.1: Report Manager - the application continues showing the warning message when you select NO or Cancel

RELEASE 6.1.20729.1

- 23021RP 6.1 - Report Manager - Allow to add new series, opinion and filter when the report is new
- 23060Reporting 6.1: Report Manager - the Reset UI has not functionality
- 23061Reporting 6.1: Report Manager: the app show the UI used the latest report selected when use the option New

- 23071 Reporting 6.1: Lag 1 Report - Series Attributes are not displaying correctly
- 23072 Reporting 6.1: Lag 3 Report - Series Attributes are not displaying correctly
- 23073 Reporting 6.1: Lag Waterfall - Series Attributes are not displaying correctly
- 23074 Reporting 6.1: Forecast Accuracy Calculations - the application doesn't display the report
- 23077 Related to work item 22604 - Reports: enhancements - the headers must be frozen
- 23081 Reporting 6.1: Report Manager - the application displays “Object reference not set to an instance of an object” when you open the manager

RELEASE 6.1.20722.3

- 23019 RP 6.1 - Report Manager - Implement a Save As * 2
- 23053 Reporting 6.1: Report Manager - Save As - the reports saved with “save as” are empty
- 23056 Reporting 6.1-Report manager: the app doesn't ask for a name when user Save As
- 23057 Reporting 6.1: Report Manager: the app show Filter attributes in OL section to
- 23058 Reporting 6.1: Report Manager -Fix effect: the application displays the warning message each time that you select a scenari

RELEASE 6.1.20719.1

- 22892 Reporting 6.1-Report Manager: Remove some unnecessary options in some sections
- 22895 Reporting 6.1-Field Name-Report Manager: the list of Series and OLs must be a combo list not editable or a editor if custom is selected
- 22905 Reporting 6.1-Scenarios-Report Manager: the scenario list only must show the own scenarios and not the aggregate levels of a scenari
- 22909 Reporting 6.1-Settings-Report Manager: the app lost the changes while i change between scenarios
- 22913 Reporting 6.1-Settings-Report Manager: the app show by default some values that are not the real values
- 22925 Reporting 6.1-Scenarios-Report Manager: the list of scenario must be ordered by description
- 22926 Reporting 6.1-Report Manager: the app show an error message when use option Auto Hide
- 22927 Reporting 6.1-Report Manager: the app show an error message when use option any option in the tab Like Hide, Auto hide, move, double click
- 22964 Reporting 6.1: Pacing Report - The only period that we should see for this report is the first fcst period.
- 22967 Reporting 6.1: Report Manager - the Field Name displays series field instead of observation field in Opinion Lines Attributes
- 22972 Reporting 6.1: Report Manager - the application should display the series attributes ordered alphabetically
- 22976 Reporting 6.1: Report Manager - Custom SQL - the formula is truncated in the field name
- 23018 RP 6.1 - Report Manager - Enhance report manager after feedback * 1
- 23020 RP 6.1 - Report Manager - Show a drop down for the path and server * 1

RELEASE 6.1.20630.2

- 22750 Reports: Notes Report - the application fails to generate the Notes report
- 22774 Reports: the reports displays “Ambiguous column name 'UserValuexx’” when the opinion line contains an UserValuexx in the TX_FIELD_NAME

- 22842Reports: The application displays “A constant expression was encountered in the ORDER BY list, position 1.” when you try generate a Lag reports
- 22851Reports: Exceptions report - the application displays “A constant expression was encountered in the ORDER BY list, position 1.
- 22854Reports: the deployment displays "JohnGalt.Reporting.AppWin.Deployment has stopped working
- 22855Reports: the reporting version is not updated
- 22862Reports: Event Report - the report displays an error message when you try generate an event report

RELEASE 6.1.20630.1

- 22762Reports: The report doesn't return data if the fl_use_grouping = 1
- 22774Reports: the reports displays “Ambiguous column name 'UserValuexx’” when the opinion line contains an UserValuexx in the TX_FIELD_NAME
- 22833Reports: tblrsreportconfiguration - the application applies settings of a scenario to the other scenarios
- 22842Reports: The application displays “A constant expression was encountered in the ORDER BY list, position 1.” when you try generate a Lag reports
- 22846Reports: Inventory dollars report - the report displays an error message
- 22847Reports: the reports displays the Year and Origin field empty when the tblrsreportconfiguration is migrated
- 22848Report: Budget variance reports - the report displays “Invalid column name 'Inbound * Convfactor04’” when the FL_USE_GROUPING = 0
- 22849Reports: Margin reports - the report displays “Invalid column name 'Inbound * Convfactor04'. Invalid column name 'SSPlannedOrders - SSProjShipments'” when the FL_USE_GROUPING = 0
- 22850Reports: Inventory Dollars Report - the report displays “Invalid column name ...” when the FL_USE_GROUPING = 0
- 22851Reports: Exceptions report - the application displays “A constant expression was encountered in the ORDER BY list, position 1.

RELEASE 6.1.20111.1

- 20654Reports: Notes - The Scenario field should not be as a Criteria
- 20797Reports: The application need to use all space in Planning Portal
- 20895Reports: Notes Adjustment Report- The opinion lines in the Notes Adjustment Report do not show displayset with an User that is not fxadmin

RELEASE 6.1.11210.1

- 20602Implement report enhancements to configuration manager support at database level
- 20604Inventory reports have fields hardcoded in views
- 20678Reports: The reports don't use displayset when the User is different to fxadmin
- 20692Reports: Notes - The report doesn't display “Creation Date” when the notes were entered on series or observations

RELEASE 6.1.11209.1

- 20236Fix some labels in the Database Connection windows of deployment tool
- 20567Reports: The application doesn't work in the DME Client

- 20602 Implement report enhancements to configuration manager support at database level
- 20662 Reports: Notes - The report doesn't display "Opinion Line", "Period" and "Creation Date" when the notes were entered on observations
- 20675 Reports: Notes - The report doesn't display the Opinion Line with DisplaySet in notes observation
- 20678 Reports: The reports don't use displayset when the User is different to fxadmin
- 20683 Reports: Events Report - The reports don't show red color for negative values

RELEASE 6.1.11208.2

- 20236 Fix some labels in the Database Connection windows of deployment tool
- 20567 Reports: The application doesn't work in the DME Client
- 20597 Reports: The application displays "The request failed with HTTP status 401: Unauthorized." when you generate a report in PP
- 20605 Reports: The version is not updated in TBL_FX_JGD_FEATURE
- 20606 Reports - The deployment tool does not update forecastDB in the Reporting Services Configuration Manager.
- 20621 Reports: Budget Variance Report in Columns - Sometime the calculation is not correct
- 20622 Reports: Budget Variance Graph Report - sometime the calculation is not correct
- 20626 Reports: Budget Variance Report in rows - sometime the calculation is not correct
- 20630 Reports: Financial Margin Report in columns - sometimes the calculation is not correct in Margin %
- 20634 Reports: Financial Margin Report in rows - sometime the calculation is not correct in Margin %
- 20640 Reports: Lag 1 - The Mix calculation is not correct when $IF(false,1,Baseline_ABS_Error/Actual_Baseline)$
- 20647 Reports: Lag 3 - The Mix calculation is not correct when the $IF(false,1,Baseline_ABS_Error/Actual_Baseline)$
- 20653 Reports: The report doesn't display data if the User changed values, applied a filter to scenario while the report is open.
- 20658 Reports: the application displays "could not find stored procedure 'usp_rpt_get_report_configuration'." when you try open the reports
- 20662 Reports: Notes - The report doesn't display "Opinion Line", "Period" and "Creation Date" when the notes were entered on observations
- 20664 Reports: Notes - The report doesn't display information in "Last update" field
- 20666 Reports: Time Series Reports - The category is empty
- 20668 Reports: Notes Report - The report is empty when the scenario has not assigned a DisplaySet
- 20669 Reports: Notes Reports - The negative values are not shown in red color

RELEASE 6.1.11208.1

- 20313 Reporting: Margin Report Graph Report
- 20428 Reports: Exception Report - The report always displays data for a specific exception (hard code)
- 20557 Reports: The reports don't return data when the User has a Data Permission (DME)
- 20567 Reports: The application doesn't work in the DME Client
- 20602 Implement report enhancements to configuration manager support at database level
- 20603 Implement ability to Refresh Views based on tblRsReportConfiguration table

- 20604Inventory reports have fields hardcoded in views
- 20605Reports: The version is not updated in TBL_FX_JGD_FEATURE
- 20606Reports - The deployment tool does not update forecastDB in the Reporting Services Configuration Manager.
- 20618Reports: The application doesn't create notes when you change observations
- 20619Reports: The Budget Variance Report report doesn't show red color for the negative values
- 20623Reports: Budget Variance Graph Report - the report doesn't show red color for the negative
- 20625Reports: Budget Variance Report in rows - the report doesn't show red color for the negative values
- 20629Reports: Financial Margin Report in columns - the report doesn't show red color for the negative values
- 20632Reports: Financial Margin Report in rows - the report doesn't show red color for the negative values
- 20644Reports: Lag 1 -The MAPE and Mix calculation are not correct when the Actual_Baseline and LAG Baseline are equal to zero
- 20648Reports - Lag 3: The MAPE and Mix calculation are not correct when the Actual_Baseline and LAG Baseline are equal to zero
- 20649Reports: Deployment Tool - the note script must be include in the deployment tool
- 20651Implement audit feature for observations changes in Planning Portal
- 20656Show reporting services reports in planning portal lists

RELEASE 1.0.11124.1

- New features
 - Enhancements for Lag 1 Report
 - Enhancements for Lag 3 Report
 - Enhancements for Lag Waterfall Report
 - Enhancements for History vs Forecast Report
 - Enhancements for Pacing Report
 - Add some conditional formatting to the reports
- Bugs fixed
 - Fix some labels in the Database Connection windows of deployment tool
 - The report doesn't display the decimal according to the display set
 - The Budget Variance Graph report only displays Variance OL.
 - The application always highlights the first report that the user selected in the DME menu.
 - The application doesn't displays Graph reports for Lag 1, Lag 3 and Lag Waterfall reports
 - Validate Data Permission using session when the report is called from DME
 - The header title is repeated in each group in Lag 3 Report
 - The application doesn't show red color for negative values
 - The MAPE Calc and Mix Calc calculation are incorrect when the division is between zeroes ("NaN" and "Infinity")
 - The Deployment Tool doesn't create the JohnGalt.Reporting folder in the Report Manager

RELEASE 1.0.11123.2

- New features
 - Implement Notes Reports
 - Implement New Monthly Workbook Report
 - Implement DRP Report
 - Support notes report for observation changes in only and static hierarchy
- Bugs fixed
 - Some opinion lines are not being displayed according to the display set
 - The MAPE Calc and Mix Calc calculations in Lag 1 Report are incorrect when the division is between zeroes (“NaN” and “Infinity”)
 - The MAPE calculation in Lag 1 Report is not correct when the $ABS(Baseline_Error)/Actual_Baseline > 1$
 - In Lag 1 Report the Mix calculation is not correct when the $Baseline_ABS_Error/Actual_Baseline > 1$
 - In Lag 3 Report the MAPE calculation is not correct when the $ABS(Baseline_Error)/Actual_Baseline > 1$
 - In Lag 3 Report the Mix calculation is not correct when the $Baseline_ABS_Error/Actual_Baseline > 1$

RELEASE 1.0.11116.1

- New features
 - Inventory report
 - Planning Portal display set support
 - Red for negative numbers
- Bugs fixed
 - Fix formulas calculation issues
 - Support display set in Planning Portal
 - Support filters for fields with only null values
 - Switch the order of opinion lines in some reports to make more consistent
 - Populate Origin Filter - Hist then Fcst and change the order with Year filter
- Known issues
 - Accuracy reports are not working in different database to JGS demo db

RELEASE 1.0.11114.1

- New features
 - Data permissions support
 - User security support at database level
 - Enhancements in all reports
- Bugs fixed
 - The report viewer must show [Feature Name] - [Report Name] - [Scenario Name]
 - The Variance opinion line does not display values according to calculate (Revenue \$ - Budget \$) in the aggregate level
 - The application doesn't allow generate a report when one Criteria is empty
 - Margin % calculation is incorrect in Margin Report

- The application displays “Parser Error” when you try show a report in Planning Portal
- The reports are shown when the User has not assigned reports on reports security table
- The Workflow report doesn't displays all workflow items
- Some opinion lines are not displayed according to DisplaySet
- Known issues
 - Accuracy reports are not working in different database to JGS demo db

RELEASE 1.0.11110.1

- New features
 - The reports must support display set according to the scenari
 - Support client deployment from server side
- Bugs fixed
 - The reports must be in the center windows (Title, Graph and Data)
 - The report viewer must show [Feature Name] - [Report Name] - [Scenario Name]
 - All criterias in the reports must have “Select All” option and selected by default
 - Some calculated opinion lines does not display values according to the formula because of NULL value in DB
- Known issues
 - Accuracy reports are not working in different database to JGS demo db
 - Calculations for opinion lines in aggregate level is incorrect
 - Notes and workflow report are missing display set support and enhancements

RELEASE 1.0.11104.1

- New features
 - Budget variance reports (in rows, columns, and graph)
 - Margin variance reports (in rows, columns, and graph)
 - Accuracy lag reports (lag1, lag3, waterfall)
 - Events report
 - Exceptions report
 - Forecast variance report
 - Notes report
 - Pacing report
 - Pos shipments report
 - Time series report
 - Workflow report
 - DME Viewer and Planning Portal Integration

Batch Scheduler Release Notes

Pre Requisites

Server Machine

SQL Server 2005 Service Pack 2 with the services:

- SQL Server Integration Services
- SQL Server Agent

Framework 2.0

The database where will be installed the BS Server.

Client Machine

Framework 2.0

Features

Types of Batches

Forecast: UseloadedData, UseDataSource and Express Mode

Massive Series Update: UseloadedData, UseDataSource and Express Mode

Massive Observations Update: UseloadedData, UseDataSource and Express Mode

Schedules

One time

Recurring Daily

Using Batch scheduler 6

- 1 Go to the Batch scheduler's Physical directory and double click in BatchScheduler.UI file
- 2 Connect to a sql server and database where is installed the Batch Scheduler Server
- 3 The possible options are displayed:
 - a Adding a Batch
 - Right Click in the Batch node. Select New batch
 - Set the batch's name and other settings.
 - b Adding a Task
 - Use the button 'New' on the Task Menu or Right Click in the Task panel.
 - In the new window can put the settings according the Type of Task selected.
 - c Adding a Schedule
 - Use the button 'New' on the Schedule Menu or Right Click in the Task panel.

- In the new window can put the settings according the Type of Schedule selected.
- d Using the History View
- Double Click in the History node.

Machine x64 bits

The BatchScheduler.UI is not functionality in a machine with 64 bits. Only the Batch Scheduler Server can be installed in this kind of structure.

In order to use the Batch Scheduler Server you must follow some additional steps in order to executed manually a batch.

Using Batch

Creating a Batch

- 1 Open a command prompt window and go to the Batch scheduler's Physical directory: 'cd x:\Program Files\QAD\BatchScheduler 6\'
- 2 Use the command: bsconsole.exe -s batchsample.txt. This command creates a template with the possible types of batches.
- 3 Modify and save the template according the requirements.
- 4 In the command prompt use the command: bsconsole.exe -l "batchsample.txt". The batch is created.
- 5 The step four creates in the Batch scheduler's Physical directory a tdsx file. The tdsx files generated must be moved to x:\Program Files (x86)\Microsoft SQL Server\90\DTS\Binn in order to be executed.

Executing a batch

- 1 If you need to execute the batch, go to x:\Program Files (x86)\Microsoft SQL Server\90\DTS\Binn in the command using: cd x:\Program Files (x86)\Microsoft SQL Server\90\DTS\Binn
- 2 Execute the command dtexec.exe /F "filename.dtsx" /De [db's password]

Current Limitations

The BS Manager doesn't work when only installing the BS Manager.

The BS Server is not completely functional in a machine with 64 bits.

If the datasource is an oracle database, is necessary create a system environment variable.

The Schedule only can be set using 'One time' or 'Recurring' -'Daily'.

Differences with previous version

- 1 Total series is not created in the 'Series' table, since the grouping is handled different in this version.
- 2 When express mode is used in MSU or MOU, the source scenario is not modified.

