

QAD DSCP 2015 Demand Planning EOB 7.2 Release Notes

Revised May 2016

These release notes include information about QAD Demand Planning. These changes may affect the way you implement and use QAD Demand Planning. Review this document before installing the new QAD Demand Planning release.

QAD highly recommends that you implement the latest QAD Demand Planning release available. Check the QAD Online Support Center to make sure you have the latest QAD Demand Planning release notes, installation guide, and installation media:

<http://support.qad.com/>

Use the following list to find a specific release:

Release Notes for Current Release 2

Release Notes for Current Release

QAD Version: QAD DSCP 2015 Demand Planning EOB 7.2

Release Date: March 2015

User Guide: *QAD Demand Planning*, item 70-3326-7.2-Rev 1

Important The *QAD Demand and Supply Chain Planning User Guide* that corresponds to this release note is available for download from the QAD Store (<http://store.qad.com/>).

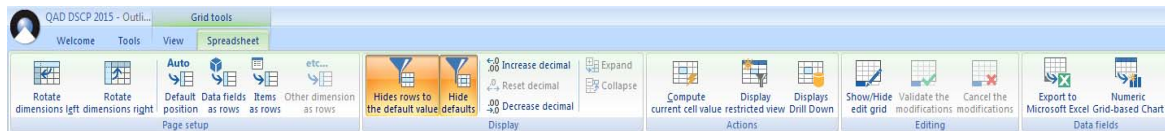
Languages Supported: French, English, German, Spanish, Italian, and Polish

User Interface Changes

In QAD Demand Planning 7.2, the graphical interface has been extensively updated and offers increased flexibility for configuring views and workspaces. The aim of these new developments is to create a better user experience.

Ribbon

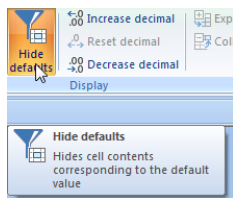
Fig. 1
Ribbon Menu



A new *ribbon* replaces the previous menus and toolbars, and the layout is now closer to Microsoft Office standards, which makes the application easier to work with. In the ribbon, button and menu bars display in different ways, depending on the current view type and the current action.

When you hover the mouse over an icon, a tool tip displays a short description of the menu item.

Fig. 2
Tool Tip



You can set the ribbon to be minimized.

Customization

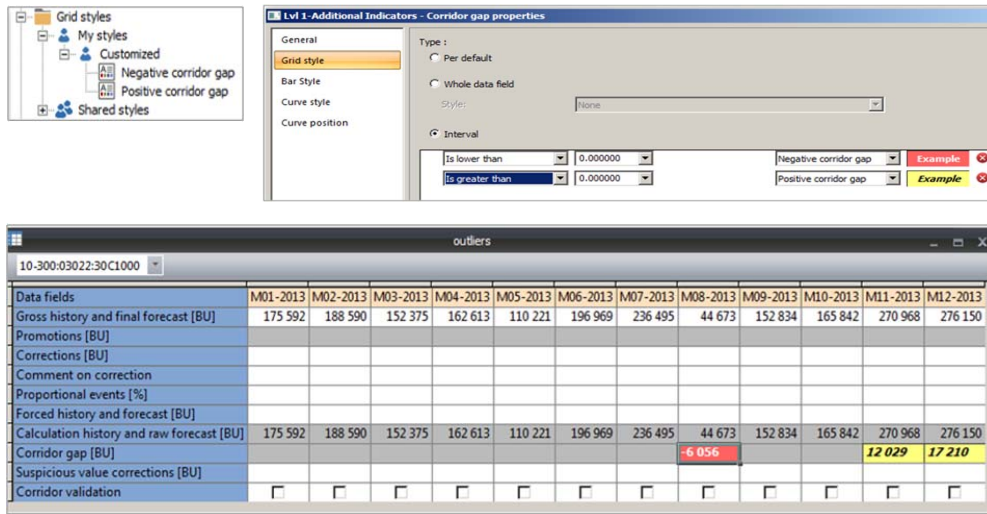
Display Options

You can now hide the default values in grid views to gain immediate access to relevant data.

You can also create customized styles for alerts, or for any relevant data field. This feature makes it easier and quicker for you to detect suspicious values, or to view data fields that are most relevant to you.

In the following example, additional styles were created to distinguish between corridor gaps with negative values and corridor gaps with positive values.

Fig. 3
Example Showing Additional Styles



As a result of the new UI changes, you can also:

- Include a read-only feature in a style definition.
- Define a style depending on the value of the current data field or on the value of another data field.
- Create as many styles as you want, with unlimited value ranges.

Configuring Views and Workspaces

QAD Demand Planning now includes the ability to set side panels as auto-hidden, which means that the panels only display when you hover the cursor over them.

A new magnetism feature allows you to set up the magnetism strength to easily position views within the workspace.

QAD Demand Planning includes two new field types: Date and Text. The Date type replaces the list of periods in previous version of QAD Demand Planning. The Text data field type lets you enter free text within a cell. For example, you can now enter a comment to explain a data correction that you made.

When configuring a view or a calculation, you can now select data fields from separate models, which facilitates data field selection.

QAD Demand Planning now lets you rename and translate objects and views quickly.

Quick Access Toolbar

Use the new Quick Access toolbar to launch one-click functions or shortcuts that you have chosen to include. The only default button in the Quick Access bar is the Save command. By default, the Quick Access toolbar is located on the top left of the environment, above the ribbon. You can also position it under the tape, which then allows you to display all the button bars simultaneously.

In the menu, choose Show Below the Ribbon to move the Quick Access toolbar under the button ribbon.

Accessing Help

QAD Demand Planning now allows you to access the online help for a data field or calculation directly from the grid header, or from the browser. As a result, you can now reach the information you require easily and quickly. You can also open the online help from the ribbon.

When you receive an error message about a calculation, you can now locate the corresponding calculation directly from the message.

From a grid header, you can open a summary view of all standard data fields, which displays useful information about the data field dimensions, default value, unit of measure, and so on.

Web Portal

The Web Portal was introduced in QAD Demand Planning 7.1, and is a collaborative tool, accessed through the Internet. The Portal is designed to enable users to share and view demand planning information, even when they are away from the office.

A number of enhancements were made to the Web Portal in QAD Demand Planning. The Web workspaces have been enriched and you can now view real charts instead of pictures.

You can now open several workspaces in different tabs to, for example, quickly compare data.

Using the Web client, you can now export a grid to an Excel file, work separately in Excel, and then upload the updated values and comments back to QAD Demand Planning.

When connected, you can see what users are currently using QAD Demand Planning, and can share instant messages with all connected users.

All these features make QAD Demand Planning a highly collaborative tool, with multi-access and multi-users features.

Planning Features

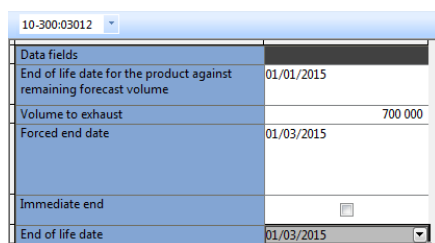
End of Life

QAD Demand Planning includes new data fields for managing the end of life for an item.

You can force the item end of life immediately or at a specific date, and you can combine the end of life date with a sales volumes to use up before phasing the product out.

The Global setup data table of the forecast model contains the new end of life data fields.

Fig. 4
Global Setup Table



10-300:03012	
Data fields	
End of life date for the product against remaining forecast volume	01/01/2015
Volume to exhaust	700 000
Forced end date	01/03/2015
Immediate end	<input type="checkbox"/>
End of life date	01/03/2015

Demand Planning Data Fields

QAD Demand Planning now includes a new KPI: Average of calculation history. This indicator, which is very useful for analysis purposes, is now available as standard.

The Forced cycle total data field now follows the standard Demand and Supply Chain Planning (DSCP) forcing rules. The forcing becomes effective as soon as you enter a Forced cycle total value.

Promotional Events

QAD Demand Planning includes a new option for promotional events. The Promotion Effect Estimate option lets you calculate promotion volumes from sales history, instead of entering the values or retrieving them from events tables. To use the Promotion Effect Estimate option, you specify the items and periods in the past where a promotional event was ongoing. Within these periods, the gap between the archived baseline and actual sales is calculated as the promotion effect.

At the same time, the calculation history is automatically cleaned of exceptional values. The calculation history without promotional data is then input to the forecast calculation. After the raw forecast is calculated, you can use the promotional effect to automatically define the promotional volumes for future events.

You need to specify the references and periods for which an exceptional event is scheduled in the future. This information probably comes from people external to Demand Planning. The process of involving several people in Demand review is called Collaborative forecasting.

You can use the promotion effect calculated at item level, or at item group level. This way you can estimate the promotion effect for a new item with no history, deducting it from the group the item belongs to.

