

# QAD DSCP 2015 Demand Planning EOB 7.3 Release Notes

**Revised May 2016**

These release notes include information about QAD Demand Planning. These changes may affect the way you implement and use QAD Demand Planning. Review this document before installing the new QAD Warehousing release.

QAD highly recommends that you implement the latest QAD Demand Planning release available. Check the QAD Online Support Center to make sure you have the latest QAD Demand Planning release notes, installation guide, and installation media:

<http://support.qad.com/>

Use the following list to find a specific release:

***Release Notes for Current Release    2***

***Release Notes for 7.2 Release    7***

# Release Notes for Current Release

**QAD Version:** QAD DSCP 2015 Demand Planning EOB 7.3

**Release Date:** February 2016

**User Guide:** *QAD Demand Planning 7.3 EOB*, item 70-3326-7.3

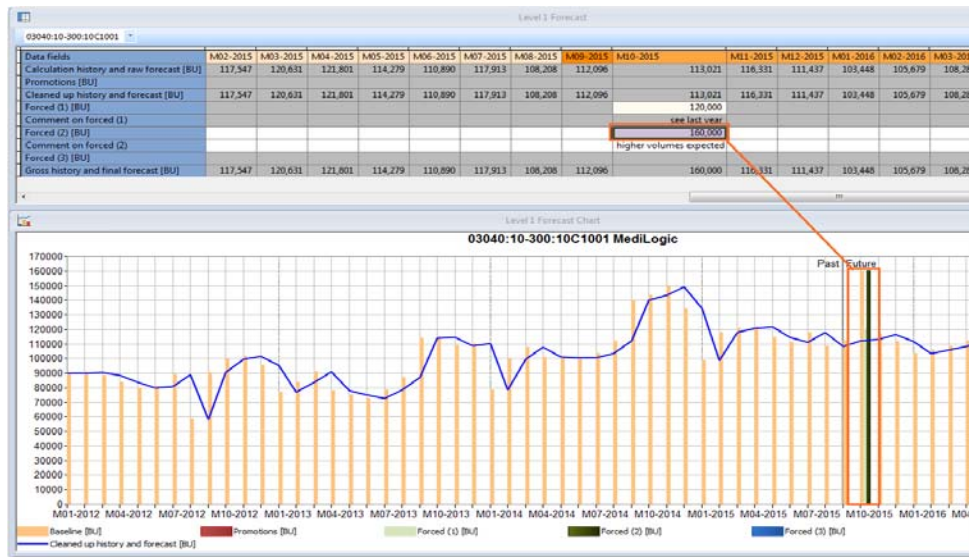
**Important** The *QAD Demand and Supply Chain Planning User Guide* that corresponds to this release note is available for download from the QAD Store (<http://store.qad.com/>).

**Languages Supported:** French, English, German, Spanish, Italian, and Polish

## Fixes

In the Collaborative 2 workspace, collaborative 2 user group viewing and editing rights were fully implemented. As a result, the demo 2 user can now display views and enter a forced forecast within the workspace.

**Fig. 1**  
Collaborative 2 Workspace



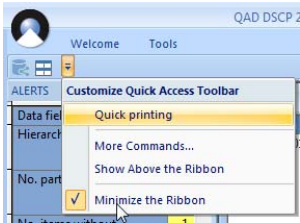
## UI Changes

### Ribbon Hidden in Preconfigured Workspaces

In preconfigured workspaces, the Ribbon is hidden by default to maximize the workspace area available for displaying planning views.

To display the Ribbon, click the small arrow on the right of the Quick Access toolbar, and clear the **Minimize the Ribbon** option.

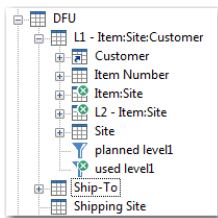
**Fig. 2**  
Minimize the Ribbon Option



## Renamed Master Tables

Several hierarchical master tables and objects have been renamed to better reflect how the tables and objects map to imported QAD Enterprise Applications data.

**Fig. 3**  
Master Tables



## EOB Workspaces

Several workspaces have been reworked extensively in the EOB 7.3 database.

Many shortcuts are now located in the Quick Access toolbars, instead of in the Shortcut menu. This updated configuration allows you to hide the Shortcut menu to gain the maximum amount of space for positioning child views. The Shortcut menu is auto-hidden and you can display it by hovering the cursor over the Shortcut window name.

**Fig. 4**  
Auto-Hidden Shortcut Menu



The EOB 7.3 database also includes new workspaces for managing the life cycle of items. Additionally, the workspaces dedicated to metrics are now separate from the Forecast process workspaces.

New text data fields let you record comments, which enriches user experience in the Review Forecast 1, Review Forecast 2, and Weekly Demand collaborative workspaces.

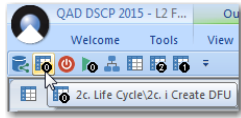
**Fig. 5**  
Text Data Field

Data fields	M08-2014	M09-2014	M10-2014
Calculation history and raw forecast [BU]	139 691	126 979	120 395
Promotions [BU]			
Cleaned up history and forecast [BU]	139 691	126 979	120 395
forced (1) [BU]		120 000	
Comment on forced (1)		Promotion different from last September	

The EOB 7.3 database includes new Quick Access toolbars that include shortcuts previously located in the Shortcut menu. The Shortcut menu is easy to use and offers a clean vision of the Demand Planning process.

Most shortcuts are now available in the relevant workspaces so you no longer need to frequently display the Shortcut window.

**Fig. 6**  
Shortcut for Creating DFUs



## Interfaces with QAD Enterprise Applications

The EOB 7.3 database includes new features that facilitate integration with QAD Enterprise Applications.

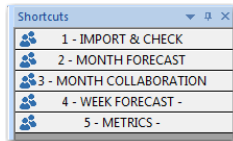
The standard EOB processes now simplify the import and export processes from and to QAD Enterprise Applications.

## Planning Features

### Simpler Demand Planning Process Menu

The reworking of workspaces and shortcuts has resulted in a refined Demand Planning Process menu in the Shortcut window.

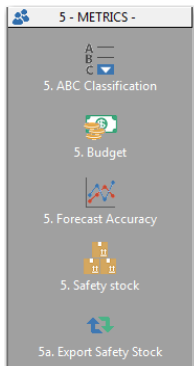
**Fig. 7**  
Shortcut Menu



A dedicated workspace includes the views required to clean the sales history, before you calculate and adjust the forecast.

A new Metrics shortcut menu separates the Metrics views from the Forecast Process workspaces.

**Fig. 8**  
Metrics Shortcut Menu



## Weekly Forecast Enhancements

### Weekly Split Calculation

A new calculation splits the forecast from monthly buckets to weekly buckets.

The principle of the calculation is as follows:

- Depending on the month, the monthly forecast is split into four weeks or five weeks.
- The Monday determines the month to which a week belongs. Therefore, a week that overlaps two different months is considered to be fully within a single month, regardless of the number of days in the month.
- By default, the monthly forecast is then spread evenly over the four or five weeks.
- Use the data fields Forced weight week 1, Forced weight week 2, and so on to manually force the weight of any of these weeks.

If needed, QAD Demand Planning readjusts the week weights to ensure that the monthly total is exactly 100%, and applies these coefficients to every week in the horizon.

A new Pegging view displays the calculated weekly numbers and adjusted weekly weights to facilitate understanding of the numbers attributed in the weekly forecast split.

### Recording Comments on Promotions

A new text data field lets you enter free-text comments regarding promotions.

## Managing Item Life Cycles

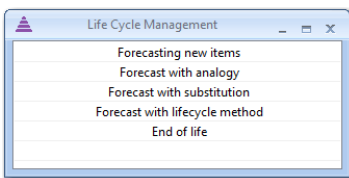
A specific workspace is now dedicated to the management of item life cycles.

Several sets of views allow you to analyze all stages in an item life cycle and to manage them. You can:

- Assign a forecast to new items
- Define forecasts using the substitution method
- Define forecasts using the analogy method

**Fig. 9**

Life Cycle Management Menu



You can now manage an item's end of life using the following new data fields in QAD DSCP 2015:

- Immediate end
- Forced end date
- End of life date with volume to exhaust

## Managing Safety Stock

A new workspace is dedicated to the management of safety stock.

This workspace makes it easier for you to compare the safety stock calculated in QAD DSCP with the safety stock imported from QAD Enterprise Applications.

New data fields allow you to force the safety stock value to export to QAD Enterprise Applications, and to select the safety stock values exported.

**Fig. 10**  
Safety Stock Management View

Item Number	Safety stock split from L2 (BU)	Lead time from import (Standard Days)	Computed safety stock (BU)	Safety stock from import (BU)	Safety stock difference (BU)	Safety stock deviation (%)	Forced safety stock (BU)	Safety stock to export (BU)	Export safety stock
03011	41,174	15.0	34,580	45,000	10,420	23.16%		34,580	<input type="checkbox"/>
03012	77,768	15.0	65,313	65,000	-313	-0.48%		65,313	<input type="checkbox"/>
03013	39,962	12.0	30,033	28,500	-1,533	-5.38%		30,033	<input type="checkbox"/>
03021	208,994	15.0	173,002	170,000	-3,002	-1.77%		173,002	<input type="checkbox"/>
03022	38,400	21.0	38,158	45,000	6,842	15.20%		38,158	<input type="checkbox"/>
03023	33,703	30.0	40,029	60,000	19,971	33.28%		40,029	<input type="checkbox"/>
03033	84,416	15.0	70,896	88,500	17,604	19.89%		70,896	<input type="checkbox"/>
03040	20,288	15.0	17,047	18,750	1,703	9.08%		17,047	<input type="checkbox"/>
03041	66,579	15.0	55,915	55,400	-515	-0.92%		55,915	<input type="checkbox"/>
03042	72,584	10.0	49,773	75,000	25,227	33.64%		49,773	<input type="checkbox"/>
03043	37,662	20.0	36,523	38,500	1,977	5.14%		36,523	<input type="checkbox"/>
03090	55,999	15.0	46,274	56,000	9,726	17.37%		46,274	<input type="checkbox"/>

A new shortcut lets you export the selected safety stock values to QAD Enterprise Applications using one click.

# Release Notes for 7.2 Release

**QAD Version:** QAD DSCP 2015 Demand Planning EOB 7.2

**Release Date:** March 2015

**User Guide:** *QAD Demand Planning*, item 70-3326-7.2-Rev 1

**Important** The QAD DSCP User Guide that corresponds to this release note is available for download from the QAD Store (<http://store.qad.com/>).

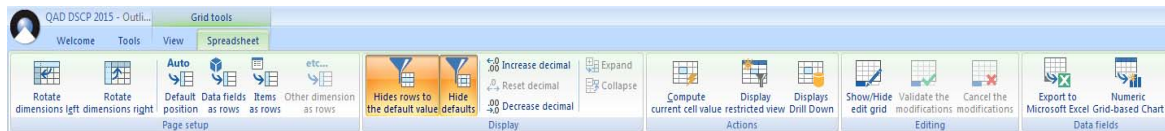
**Languages Supported:** French, English, German, Spanish, Italian, and Polish

## User Interface Changes

In QAD Demand Planning 7.2, the graphical interface has been extensively updated and offers increased flexibility for configuring views and workspaces. The aim of these new developments is to create a better user experience.

### Ribbon

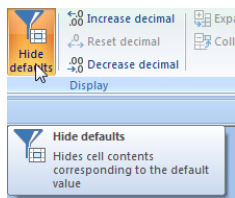
**Fig. 11**  
Ribbon Menu



A new *ribbon* replaces the previous menus and toolbars, and the layout is now closer to Microsoft Office standards, which makes the application easier to work with. In the ribbon, button and menu bars display in different ways, depending on the current view type and the current action.

When you hover the mouse over an icon, a tool tip displays a short description of the menu item.

**Fig. 12**  
Tool Tip



You can set the ribbon to be minimized.

### Customization

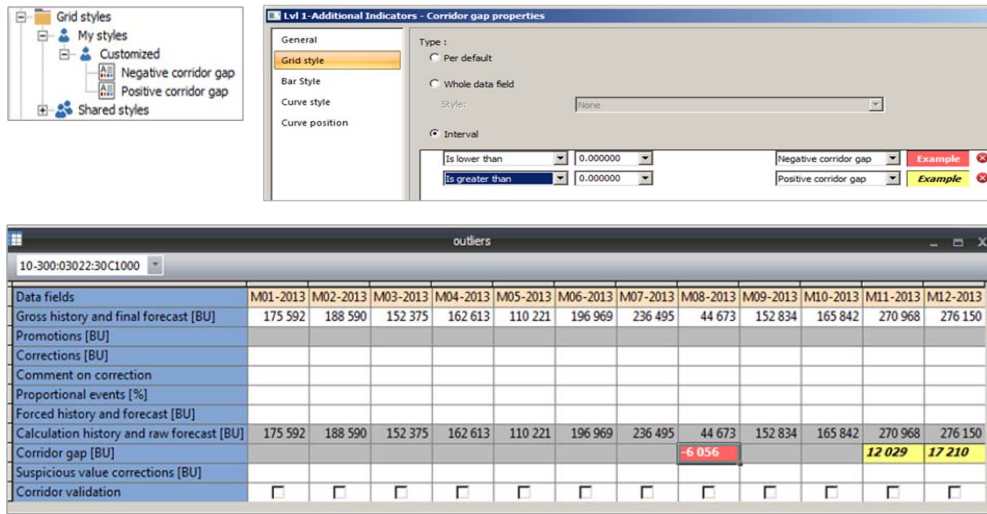
#### Display Options

You can now hide the default values in grid views to gain immediate access to relevant data.

You can also create customized styles for alerts, or for any relevant data field. This feature makes it easier and quicker for you to detect suspicious values, or to view data fields that are most relevant to you.

In the following example, additional styles were created to distinguish between corridor gaps with negative values and corridor gaps with positive values.

**Fig. 13**  
Example Showing Additional Styles



As a result of the new UI changes, you can also:

- Include a read-only feature in a style definition.
- Define a style depending on the value of the current data field or on the value of another data field.
- Create as many styles as you want, with unlimited value ranges.

### Configuring Views and Workspaces

QAD Demand Planning now includes the ability to set side panels as auto-hidden, which means that the panels only display when you hover the cursor over them.

A new magnetism feature allows you to set up the magnetism strength to easily position views within the workspace.

QAD Demand Planning includes two new field types: Date and Text. The Date type replaces the list of periods in previous version of QAD Demand Planning. The Text data field type lets you enter free text within a cell. For example, you can now enter a comment to explain a data correction that you made.

When configuring a view or a calculation, you can now select data fields from separate models, which facilitates data field selection.

QAD Demand Planning now lets you rename and translate objects and views quickly.

### Quick Access Toolbar

Use the new Quick Access toolbar to launch one-click functions or shortcuts that you have chosen to include. The only default button in the Quick Access bar is the Save command. By default, the Quick Access toolbar is located on the top left of the environment, above the ribbon. You can also position it under the tape, which then allows you to display all the button bars simultaneously.

In the menu, choose Show Below the Ribbon to move the Quick Access toolbar under the button ribbon.

## Accessing Help

QAD Demand Planning now allows you to access the online help for a data field or calculation directly from the grid header, or from the browser. As a result, you can now reach the information you require easily and quickly. You can also open the online help from the ribbon.

When you receive an error message about a calculation, you can now locate the corresponding calculation directly from the message.

From a grid header, you can open a summary view of all standard data fields, which displays useful information about the data field dimensions, default value, unit of measure, and so on.

## Web Portal

The Web Portal was introduced in QAD Demand Planning 7.1, and is a collaborative tool, accessed through the Internet. The Portal is designed to enable users to share and view demand planning information, even when they are away from the office.

A number of enhancements were made to the Web Portal in QAD Demand Planning. The Web workspaces have been enriched and you can now view real charts instead of pictures.

You can now open several workspaces in different tabs to, for example, quickly compare data.

Using the Web client, you can now export a grid to an Excel file, work separately in Excel, and then upload the updated values and comments back to QAD Demand Planning.

When connected, you can see what users are currently using QAD Demand Planning, and can share instant messages with all connected users.

All these features make QAD Demand Planning a highly collaborative tool, with multi-access and multi-users features.

## Planning Features

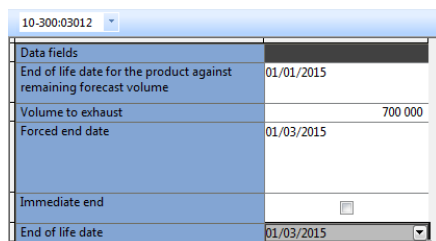
### End of Life

QAD Demand Planning includes new data fields for managing the end of life for an item.

You can force the item end of life immediately or at a specific date, and you can combine the end of life date with a sales volumes to use up before phasing the product out.

The Global setup data table of the forecast model contains the new end of life data fields.

**Fig. 14**  
Global Setup Table



10-300:03012	
Data fields	
End of life date for the product against remaining forecast volume	01/01/2015
Volume to exhaust	700 000
Forced end date	01/03/2015
Immediate end	<input type="checkbox"/>
End of life date	01/03/2015

## Demand Planning Data Fields

QAD Demand Planning now includes a new KPI: Average of calculation history. This indicator, which is very useful for analysis purposes, is now available as standard.

The Forced cycle total data field now follows the standard Demand and Supply Chain Planning (DSCP) forcing rules. The forcing becomes effective as soon as you enter a Forced cycle total value.

## Promotional Events

QAD Demand Planning includes a new option for promotional events. The Promotion Effect Estimate option lets you calculate promotion volumes from sales history, instead of entering the values or retrieving them from events tables. To use the Promotion Effect Estimate option, you specify the items and periods in the past where a promotional event was ongoing. Within these periods, the gap between the archived baseline and actual sales is calculated as the promotion effect.

At the same time, the calculation history is automatically cleaned of exceptional values. The calculation history without promotional data is then input to the forecast calculation. After the raw forecast is calculated, you can use the promotional effect to automatically define the promotional volumes for future events.

You need to specify the references and periods for which an exceptional event is scheduled in the future. This information probably comes from people external to Demand Planning. The process of involving several people in Demand review is called Collaborative forecasting.

You can use the promotion effect calculated at item level, or at item group level. This way you can estimate the promotion effect for a new item with no history, deducting it from the group the item belongs to.