



QAD Enterprise Applications

Technical Reference
QAD Enterprise Asset
Management
Entity Diagrams

This document contains proprietary information that is protected by copyright and other intellectual property laws. No part of this document may be reproduced, translated, or modified without the prior written consent of QAD Inc. The information contained in this document is subject to change without notice.

QAD Inc. provides this material as is and makes no warranty of any kind, expressed or implied, including, but not limited to, the implied warranties of merchantability and fitness for a particular purpose. QAD Inc. shall not be liable for errors contained herein or for incidental or consequential damages (including lost profits) in connection with the furnishing, performance, or use of this material whether based on warranty, contract, or other legal theory.

QAD and MFG/PRO are registered trademarks of QAD Inc. The QAD logo is a trademark of QAD Inc.

Designations used by other companies to distinguish their products are often claimed as trademarks. In this document, the product names appear in initial capital or all capital letters. Contact the appropriate companies for more information regarding trademarks and registration.

Copyright ©2015 by QAD Inc.

EAMEntityDiagrams_TR_v2015EAM.pdf/mdf

QAD Inc.

100 Innovation Place
Santa Barbara, California 93108
Phone (805) 566-6000
<http://www.qad.com>

Contents

EAM Entity Diagrams	
Change Summary	5
Chapter 1 Diagram Conventions	7
Introduction	8
Entity Relationship Diagrams	8
Relationship Examples	8
How to Use the Diagrams	9
Chapter 2 EAM Entity Diagrams	11
Blanket PO Approval	12
Blanket PO Release	13
Domain - Site Relation	14
Finance - Account I	15
Finance - Account II	16
Finance - Accounts Payable	17
Finance - Cost Center I	18
Finance - Cost Center II	19
Finance - Department I	20
Finance - Department II	21
Finance - Domain	22
Finance - GL Accounts	23
Finance - GL General	24
Finance - GL Project	25
Finance - GL Un-posted Transactions	26
Finance - GL Work Order I	27
Finance - GL Work Order II	28
Finance - Project Create	29
Finance - Project Routing-Authorize	30
Finance - Site Financials	31
Finance - Site GL	32
Finance - Site Miscellaneous	33
Finance - Sub Account I	34
Finance - Sub Account II	35
Inventory Transaction	36

iv QAD EAM Entity Diagrams Technical Reference

PO Receipt-Return I	37
PO Receipt-Return II	38
PO Receipt-Return III	39
Purchase Order Header	40
Chapter 3 EAM Table/Diagram Cross-Reference.....	41
EAM Cross-Reference	42
Product Information Resources	51
Index.....	53

EAM Entity Diagrams Change Summary

The following table summarizes significant differences between this document and previous versions.

Date/Version	Description	Reference
April 2015/EAM 2015	Initial Publication	---

Diagram Conventions

This chapter explains the diagram conventions used in this guide.

Introduction **8**

How to Use the Diagrams **9**

Introduction

This guide details major relationships between tables in a QAD Enterprise Asset Management database. These diagrams are designed to help:

- Programmers interested in customizing or modifying the standard QAD Enterprise Asset Management system. The diagrams show relationships that must be preserved in any customization or modification.
- Programmers writing queries or custom reports. The diagrams show which tables can be joined and the field specifications required to make them join. Note that all possible table relationships are not shown, just the major ones.
- Administrators interested in the availability of custom reports. The diagrams show which reports you can prepare.

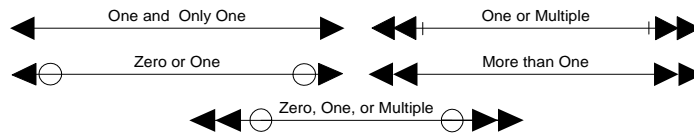
These diagrams are meant to be used in conjunction with *QAD EAM Database Definitions Technical Reference*, which is available separately.

Entity Relationship Diagrams

In a relational database, each table is a self-contained collection of data about a single thing (or *entity*). There are five relationship line identifiers that can be combined to distinguish 15 specific entity relationships.

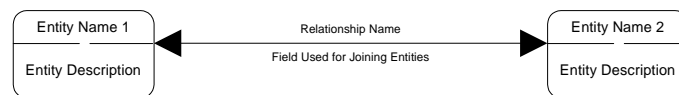
The five relationship lines are displayed in Figure 1.1

Fig. 1.1
Table Relationship Description



Relationships are identified by using the lines, as shown in Figure 1.2.

Fig. 1.2
Table Relationship Description

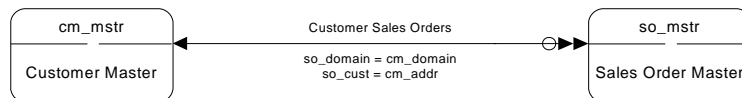


A bar symbol (|) indicates an OR relationship when more than one field can be used for joining.

Relationship Examples

Figure 1.3 shows that one customer can have zero or more sales orders and that one sales order has one and only one customer.

Fig. 1.3
cm_mstr to so_mstr Relationship Example

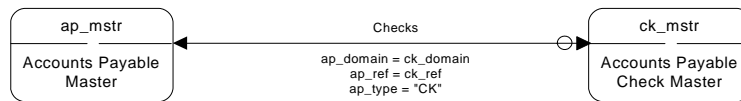


To join these two tables within Progress, you would set so_cust equal to cm_addr or vice versa.

```
FOR EACH cm_mstr EACH so_mstr WHERE so_domain = cm_domain AND cm_addr = so_cust:
  DISPLAY cm_addr so_nbr.
END.
```

Figure 1.4 shows that one accounts payable master can have zero or one check masters and that one check master must have one and only one accounts payable master.

Fig. 1.4
ap_mstr to ck_mstr Relationship Example



To join these two tables within Progress, set ap_ref equal to ck_ref and ap_type equal to CK.

```
FOR EACH ap_mstr EACH ck_mstr WHERE ap_domain = ck_domain AND ap_ref = ck_ref AND ap_type =
CK:
  DISPLAY ap_vend ck_bank ck_nbr.
END.
```

How to Use the Diagrams

The most practical way to find information about a particular area is to turn to the diagram for that area. Find the entity (table) that you are interested in and trace out the relationships.

Not all relationships are shown in any one diagram; if you are interested in the other relationships, use the cross-reference table to find the other diagrams. See Chapter 3, “EAM Table/Diagram Cross-Reference.”

When creating a report or browse, use the entity relationship diagrams to decide which table names you should use (and the join relationships). If no relationship exists between two tables, a report showing such a relationship is not possible.

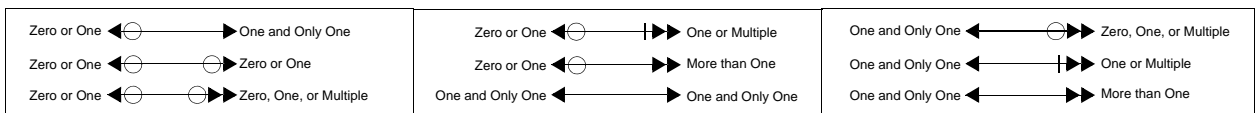
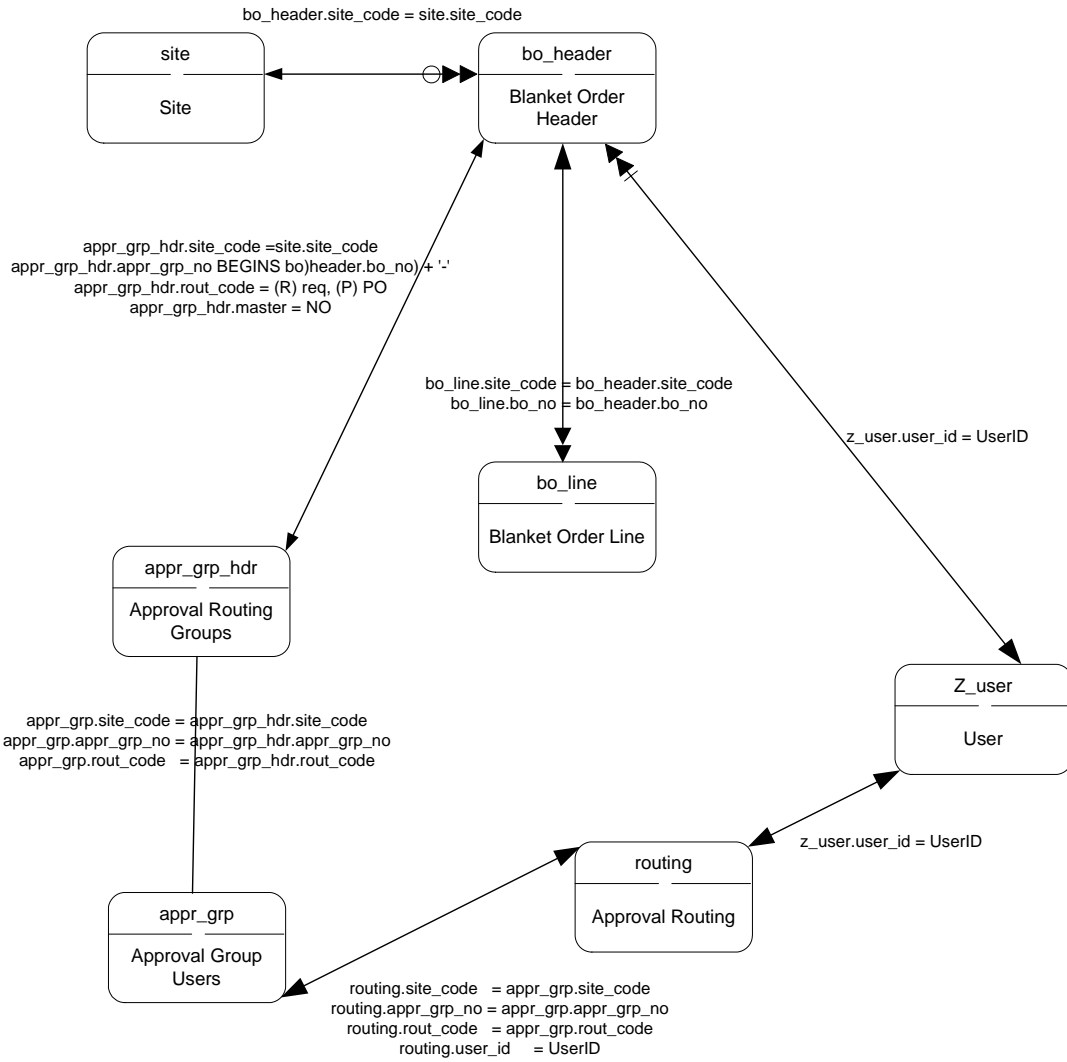
For Progress Results users, these diagrams indicate the relationships that you can show. Progress Results shows the names of tables that have relationships with a specified table. These diagrams show those tables in graphic form and show the subsidiary relationships between tables.

EAM Entity Diagrams

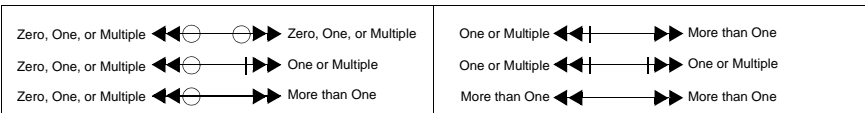
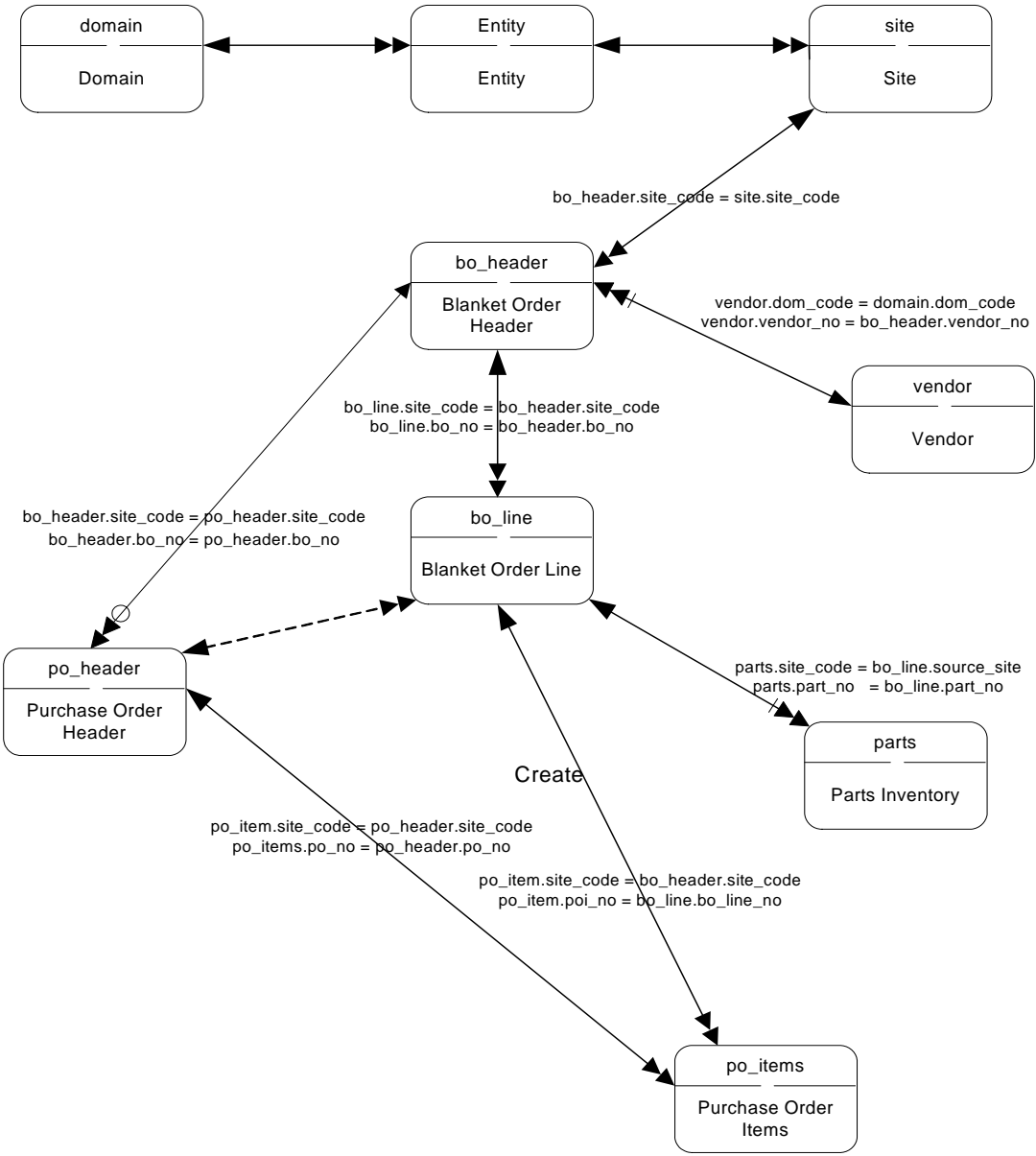
These diagrams are meant to be used in conjunction with *QAD EAM Database Definitions Technical Reference*, which is available separately. The entity diagrams are in alphabetical order starting on the next page.

Table 3.1 on page 42 lists each table included in the diagrams and indicates the title of the diagram where the table appears.

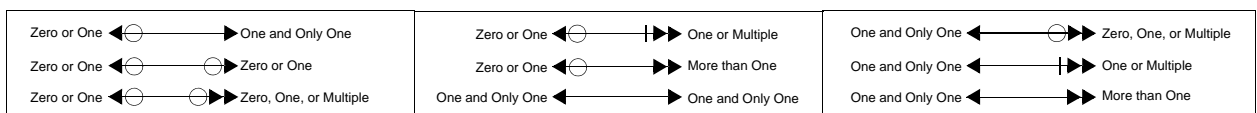
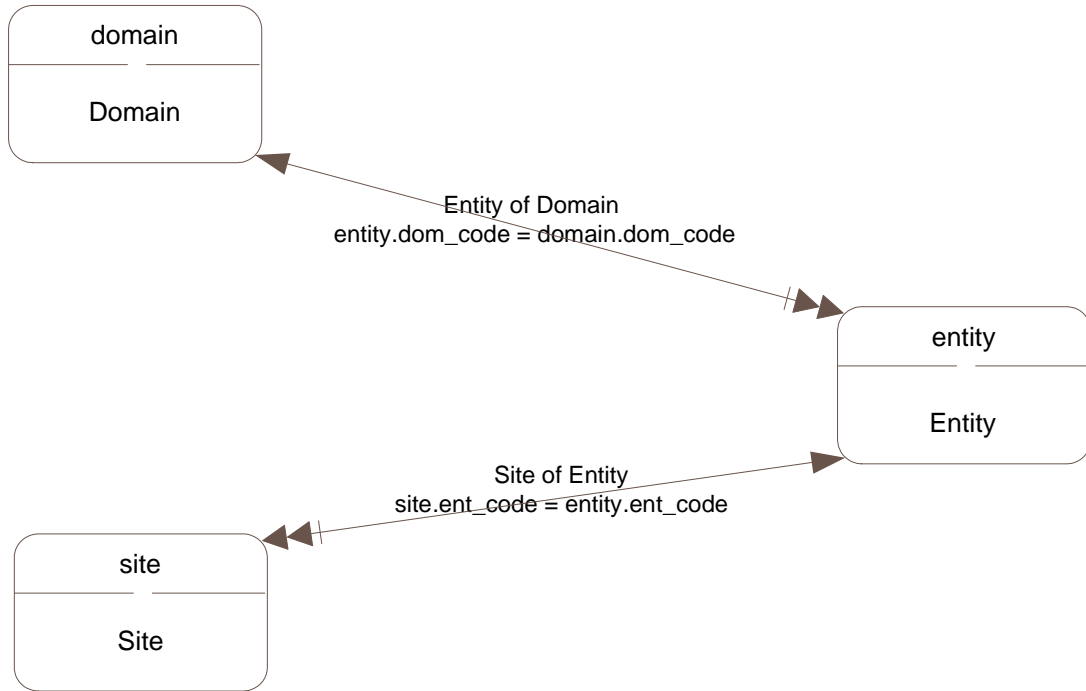
Blanket PO Approval



Blanket PO Release

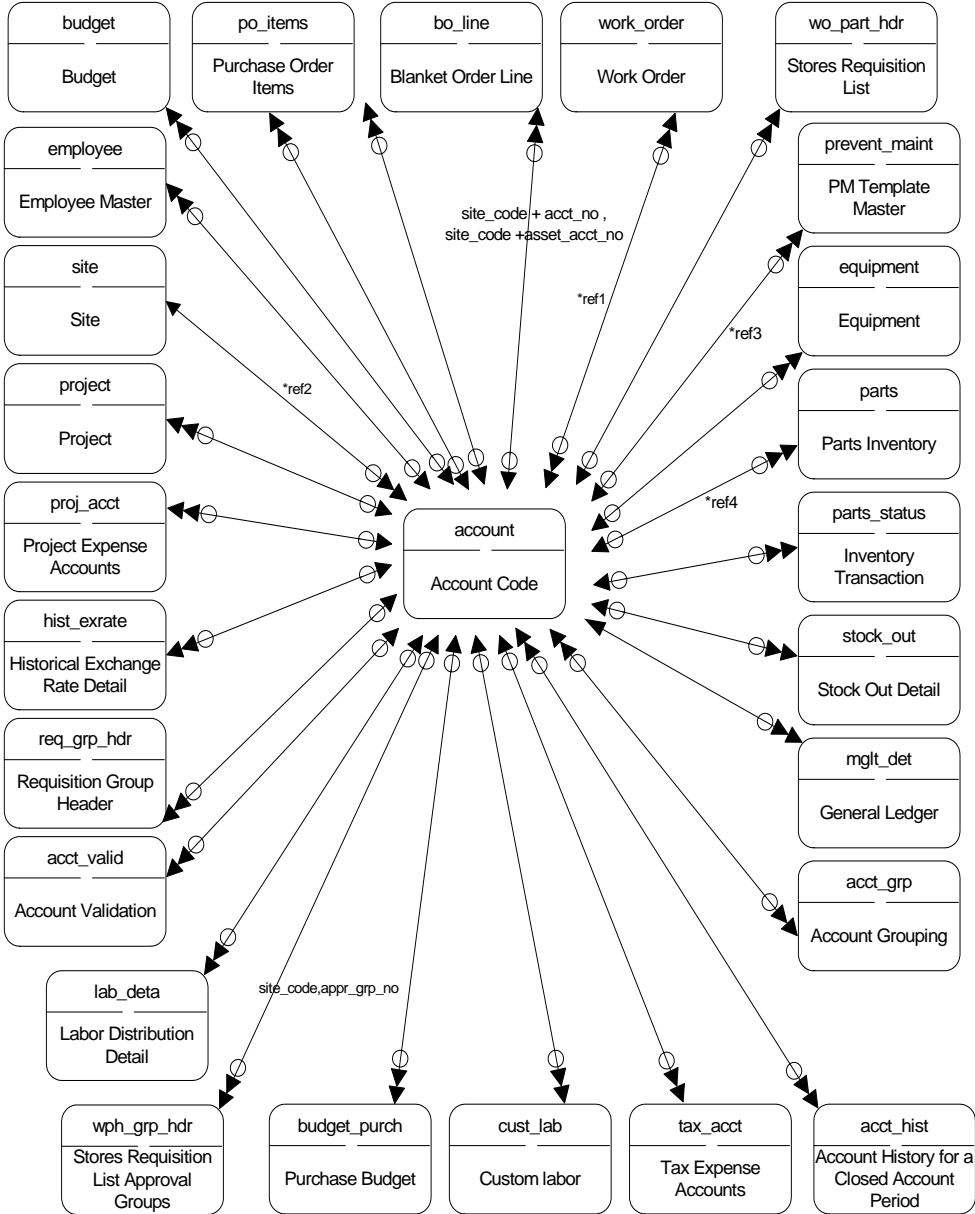


Domain - Site Relation

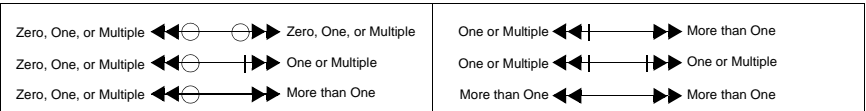


Finance - Account I

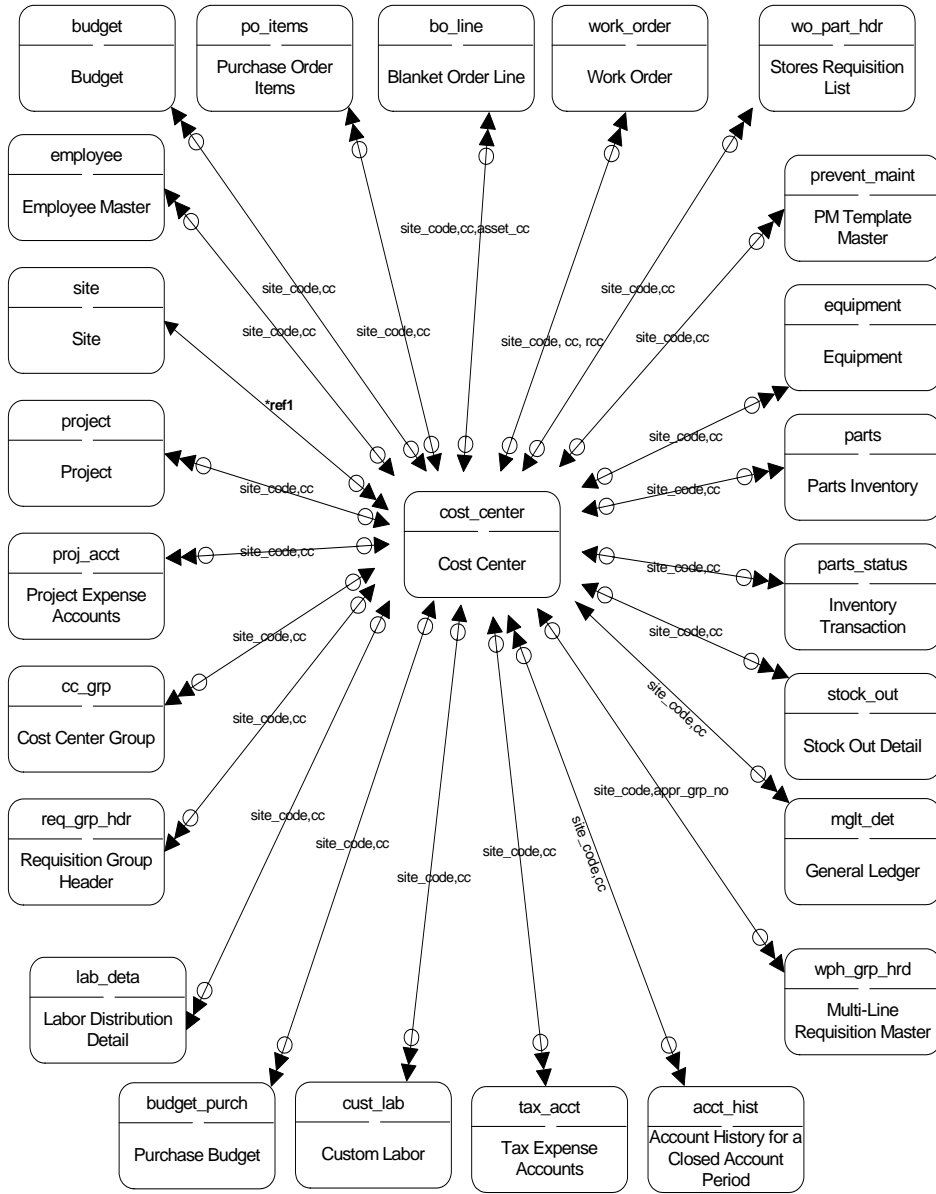
Note: Joining fields are combination of 'site_code' and 'acct_no' if not specified



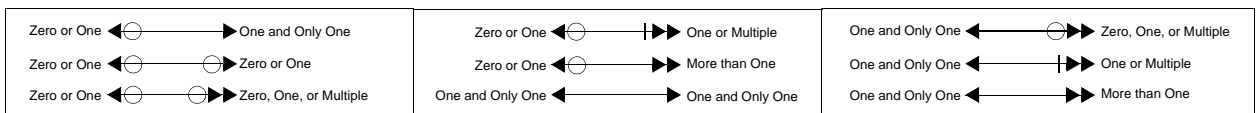
**Please refer to Finance - Account II for references(ref's)



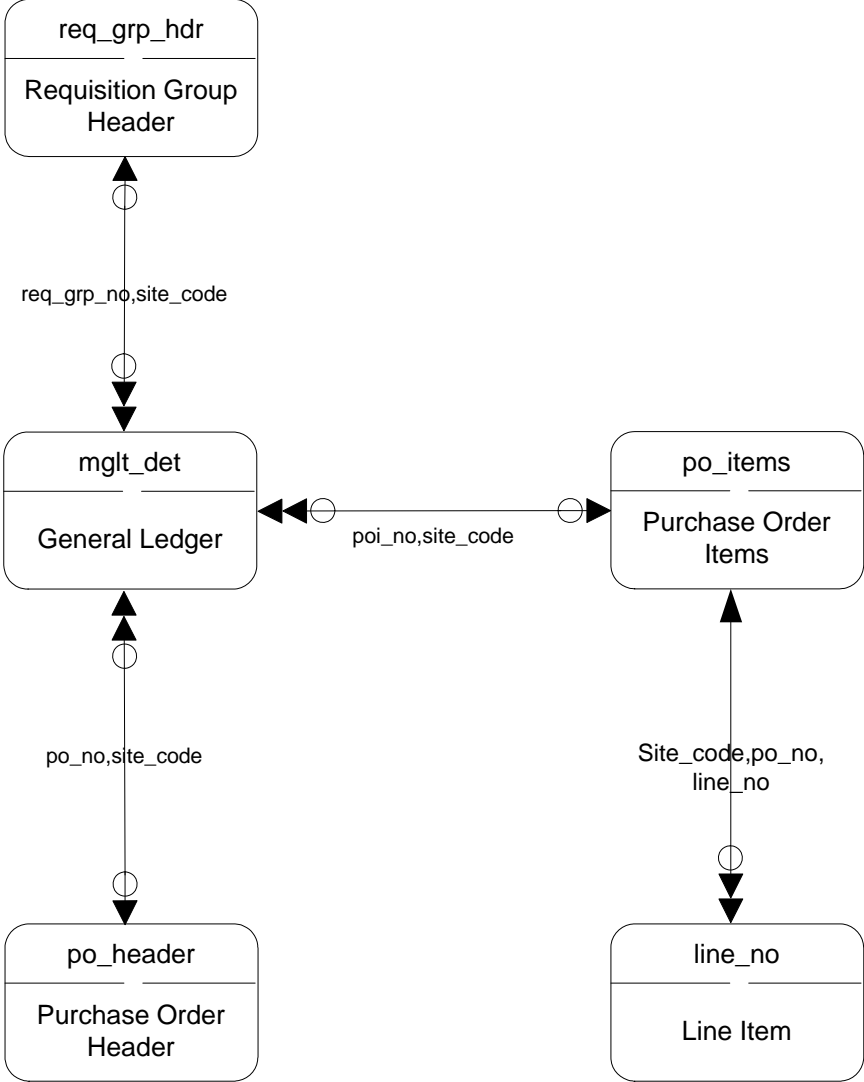
Finance - Account II



**Please refer to Finance - Cost Center II for references(ref's)

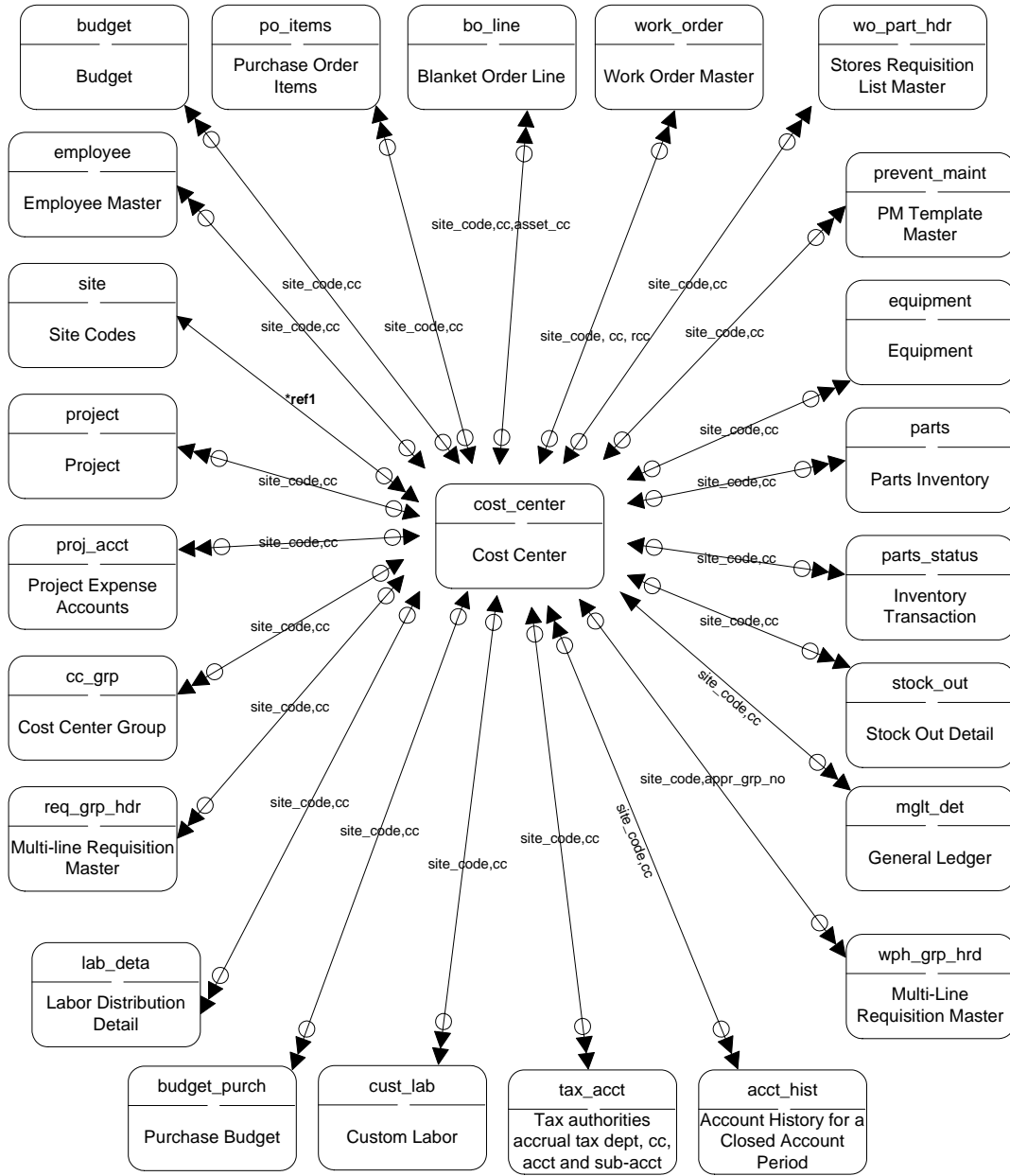


Finance - Accounts Payable

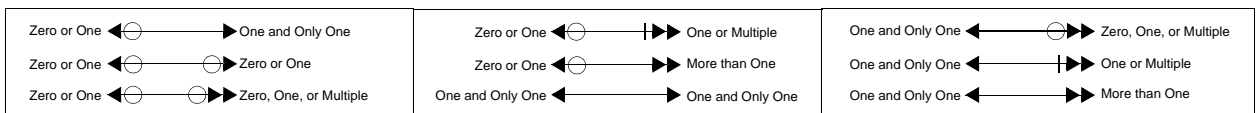


Zero, One, or Multiple	◯	◯	Zero, One, or Multiple	One or Multiple	◯	◯	More than One
Zero, One, or Multiple	◯	◯	One or Multiple	One or Multiple	◯	◯	One or Multiple
Zero, One, or Multiple	◯	◯	More than One	More than One	◯	◯	More than One

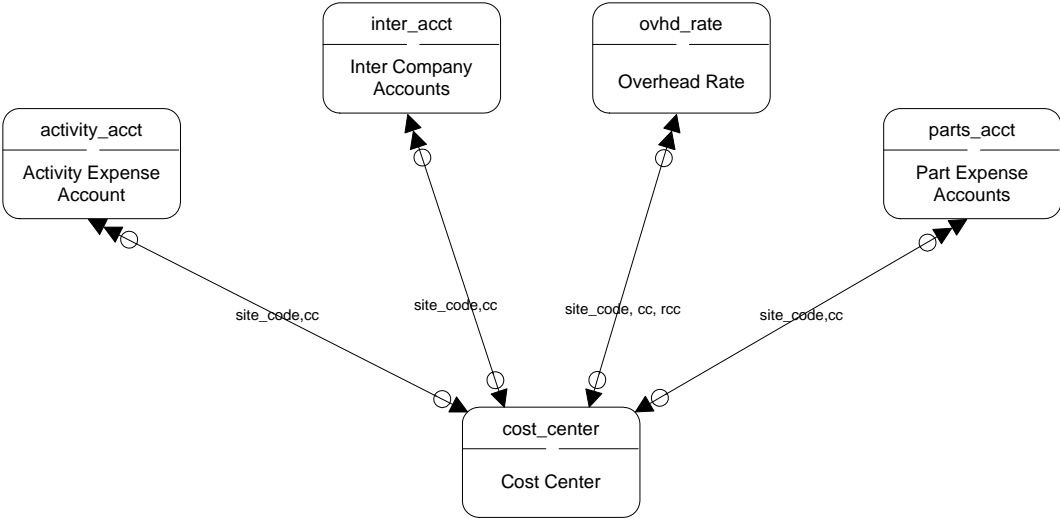
Finance - Cost Center I



**Please refer to Finance - Cost Center II for references(ref's)

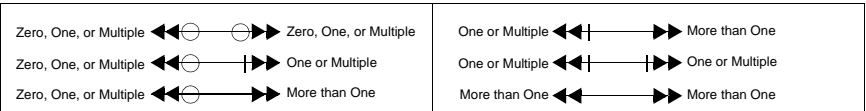


Finance - Cost Center II

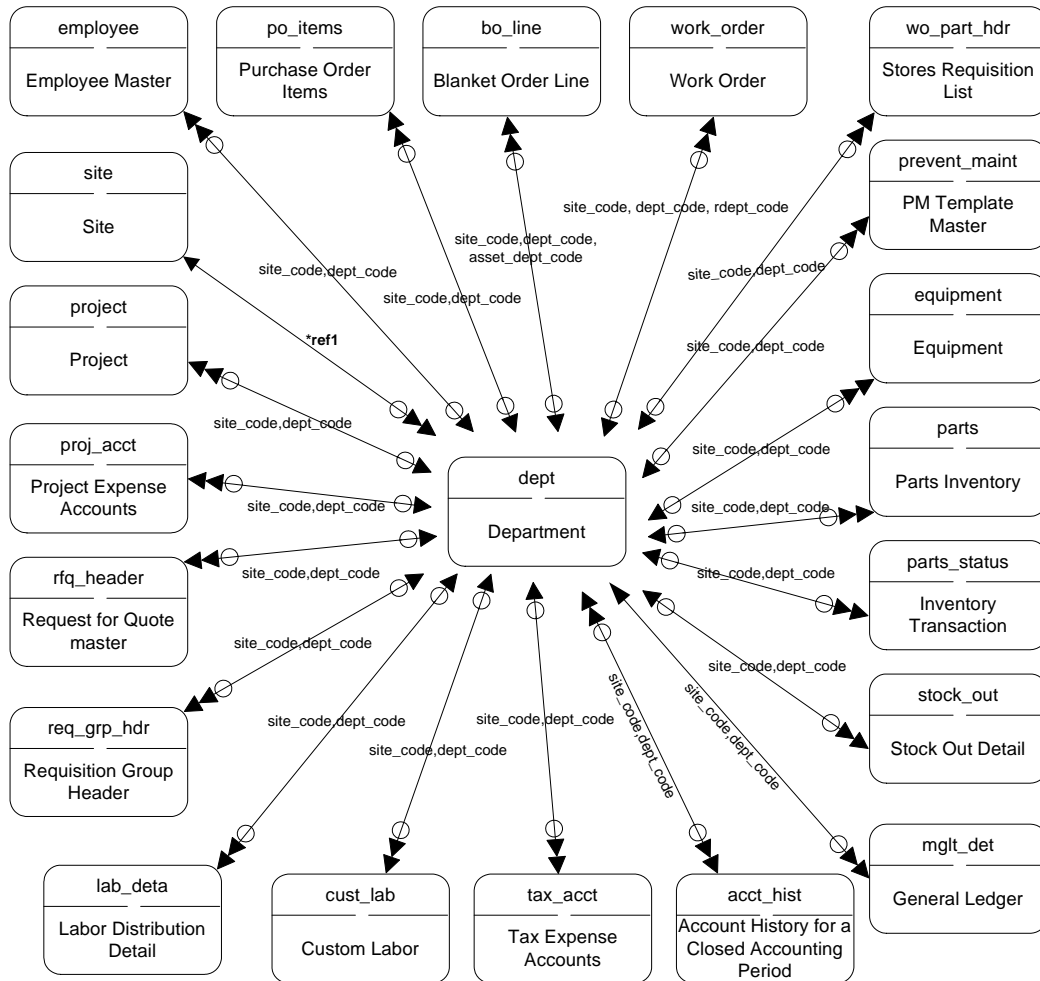


References:
 All the references below include site_code along with them

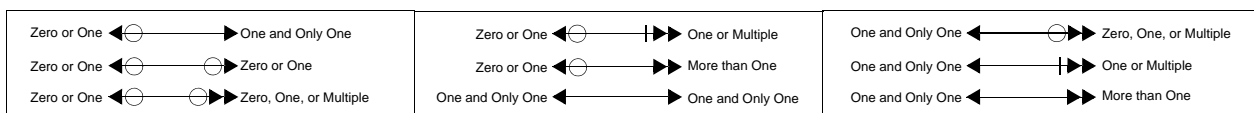
- ref1**
 adj_cc
 cc_cons
 cc_cons_adj
 fr_cc
 inter_cc
 isd_cc
 lbc_cc
 poc_cc
 pond_cc
 posd_cc
 round_cc
 so_cc
 tax_cc
 trans_cc
 var_cc
 warr_cc



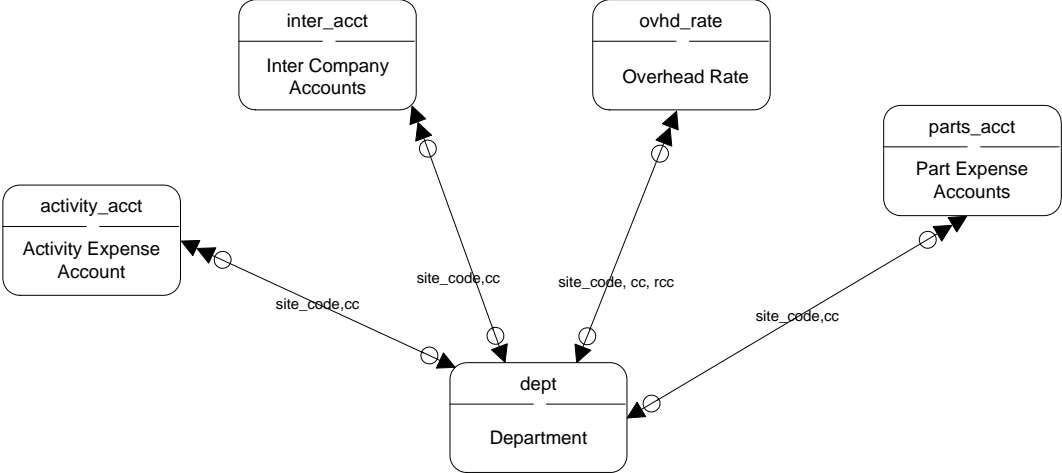
Finance - Department I



**Please refer to Finance - Department II for references(ref's)

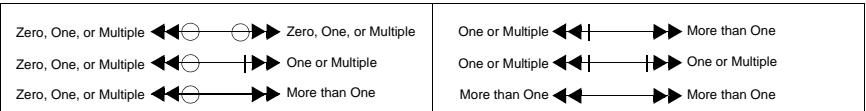


Finance - Department II

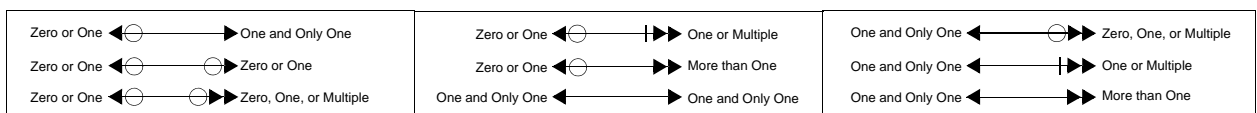
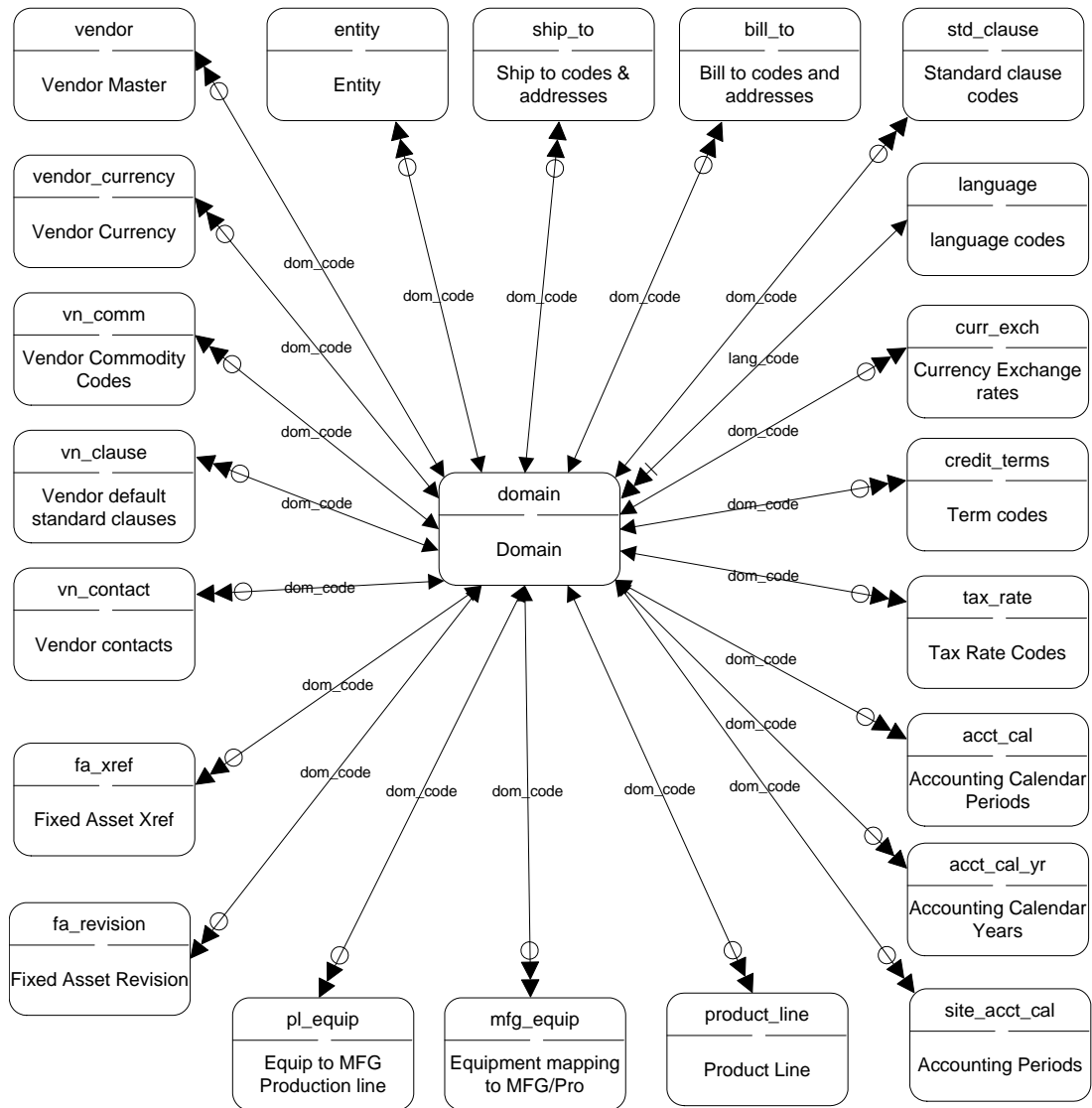


References:
 All the references below include site_code along with them

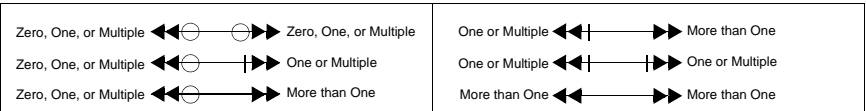
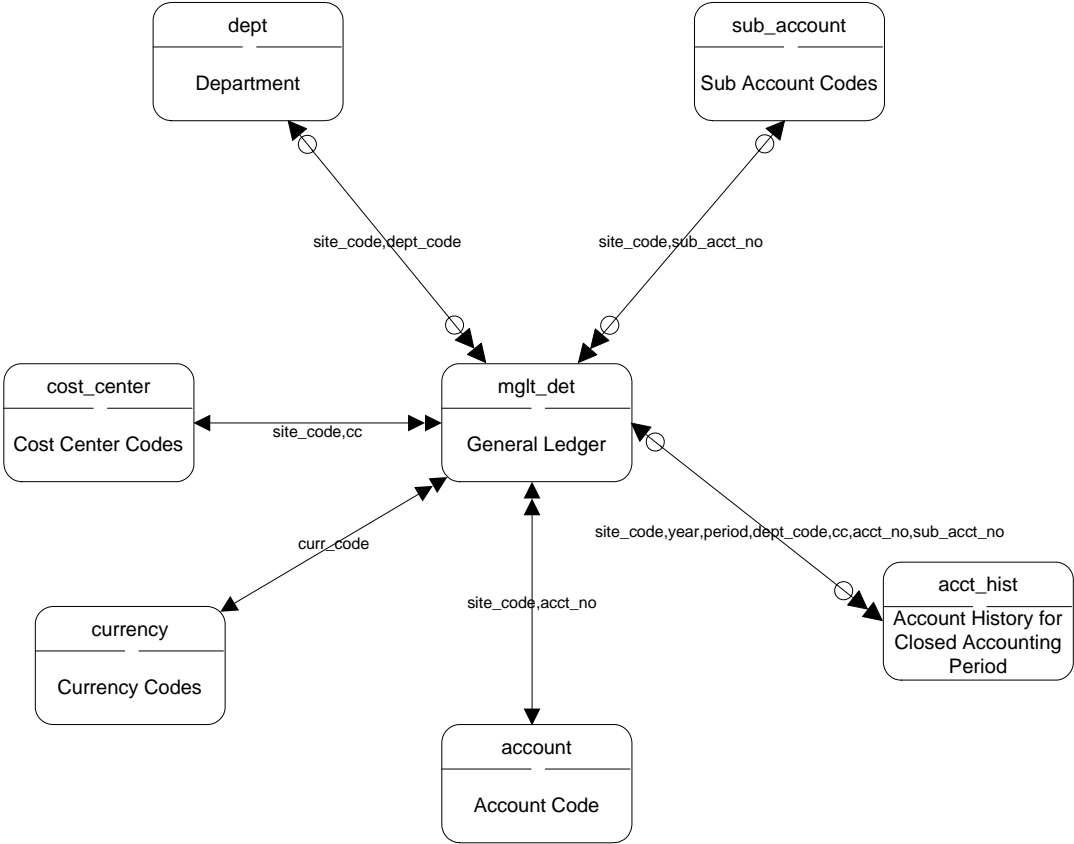
- ref1
- adj_dept
- dept_cons
- dept_cons_adj
- fr_dept
- inter_dept
- isd_dept
- lbc_dept
- lbd_dept
- poc_dept
- pond_dept
- posd_dept
- round_dept
- tax_dept
- trans_dept
- var_dept
- warr_dept_code



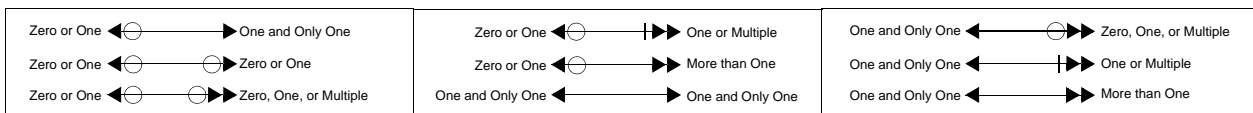
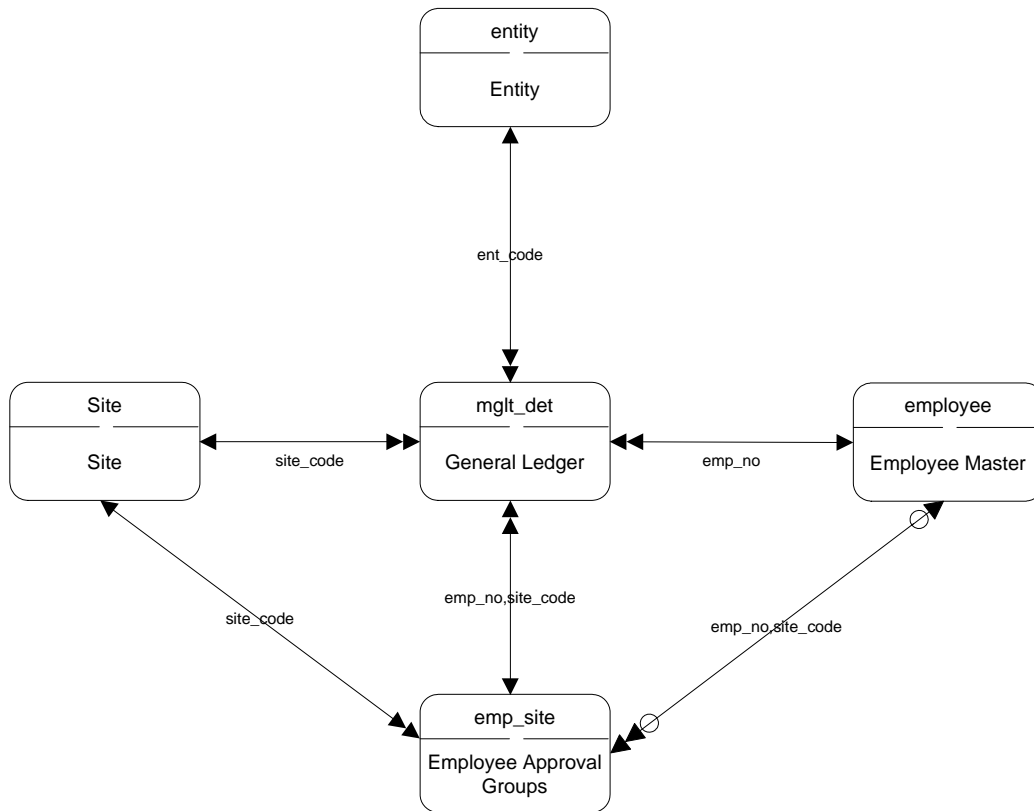
Finance - Domain



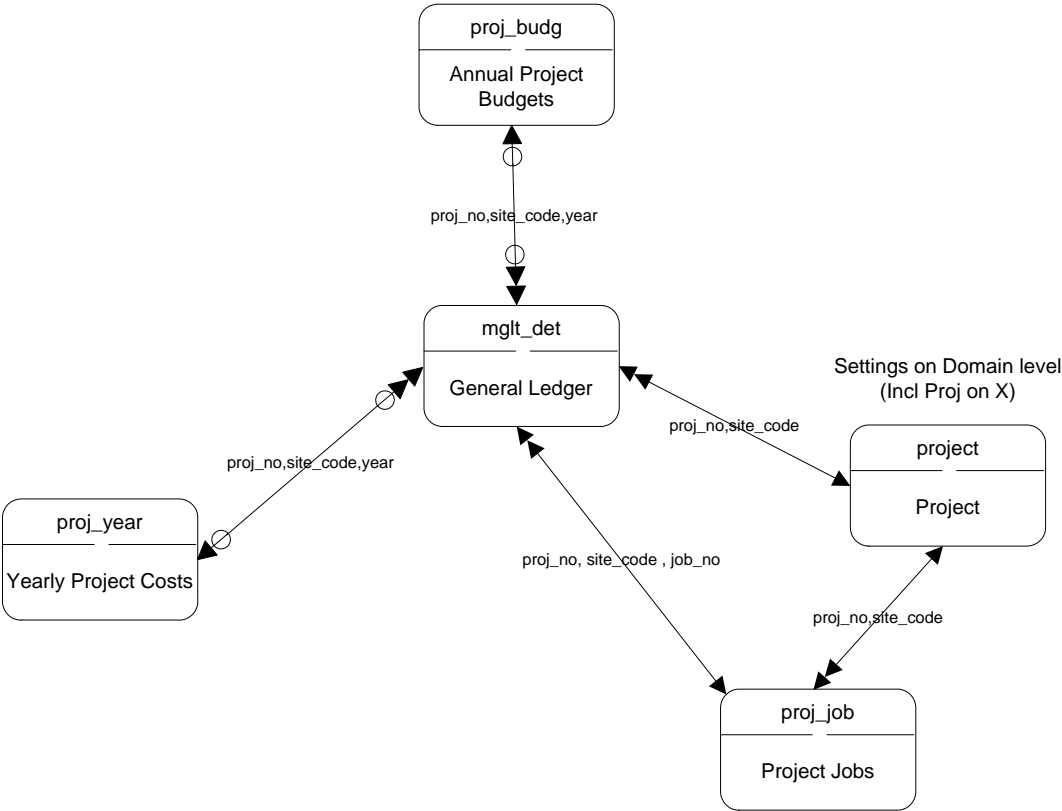
Finance - GL Accounts



Finance - GL General

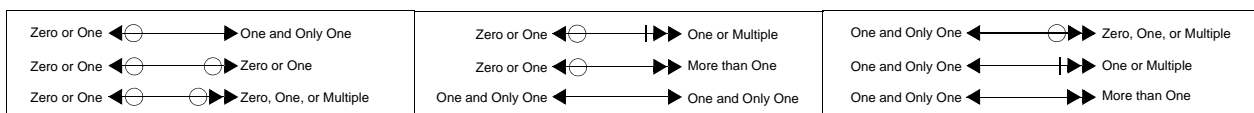
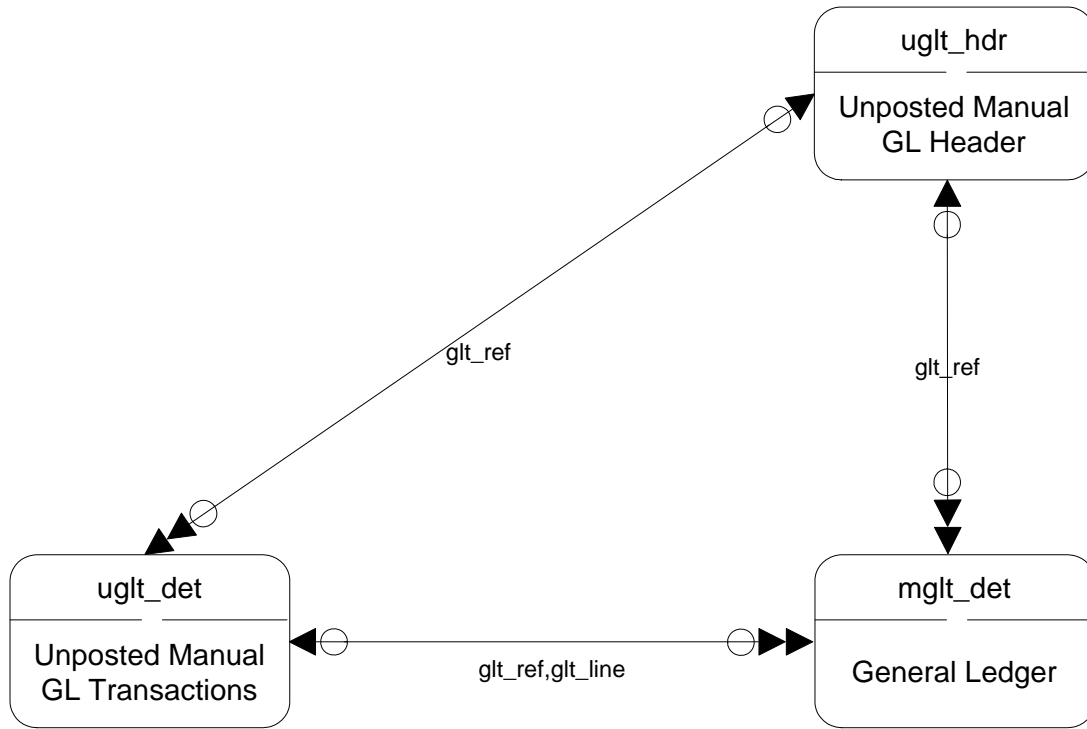


Finance - GL Project

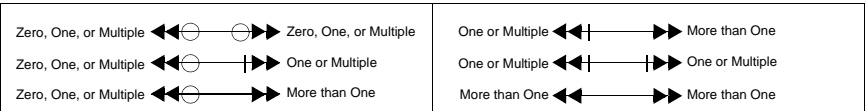
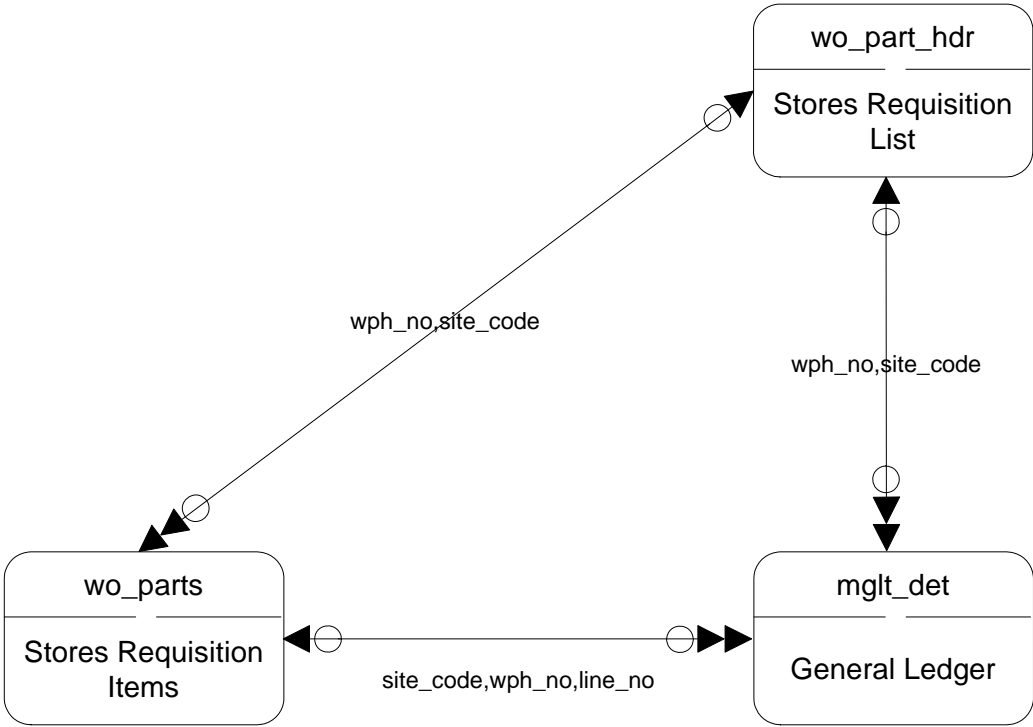


Zero, One, or Multiple	◀◀○	○▶▶	Zero, One, or Multiple	One or Multiple	◀◀	▶▶	More than One
Zero, One, or Multiple	◀◀○	▶▶	One or Multiple	One or Multiple	◀◀	▶▶	One or Multiple
Zero, One, or Multiple	◀◀○	▶▶	More than One	More than One	◀◀	▶▶	More than One

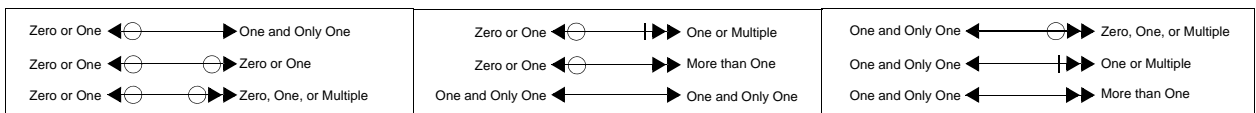
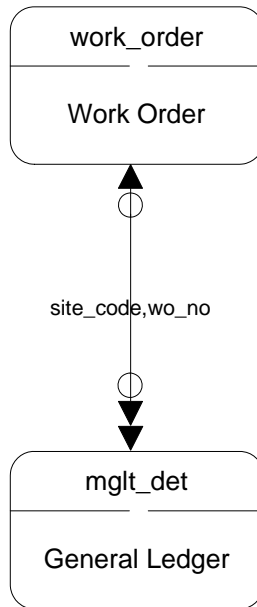
Finance - GL Un-posted Transactions



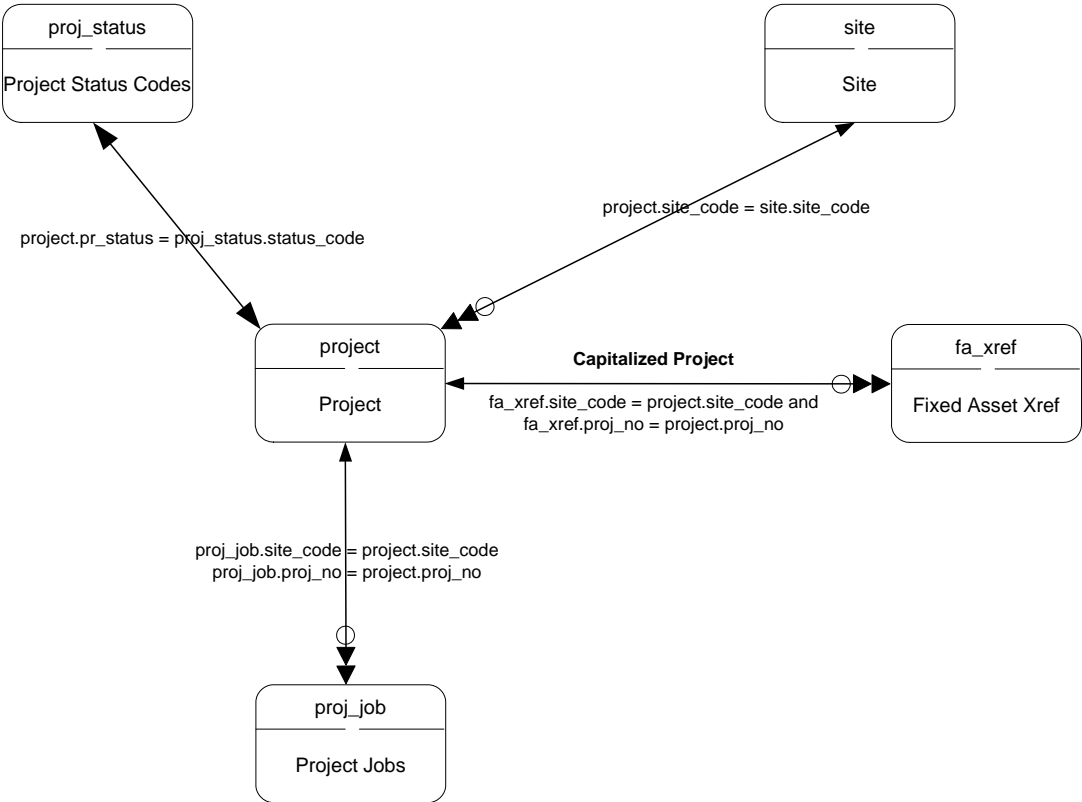
Finance - GL Work Order I



Finance - GL Work Order II

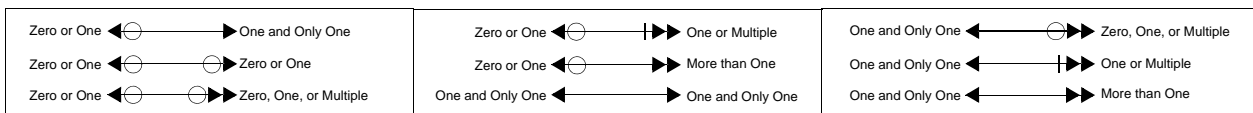
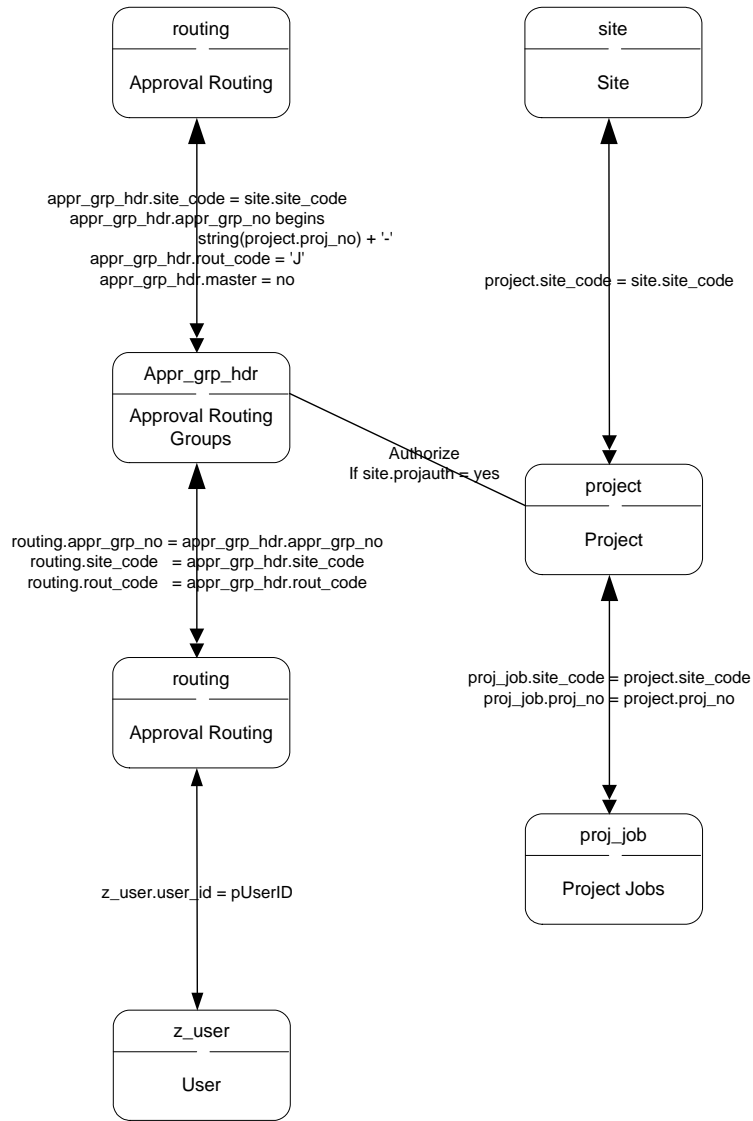


Finance - Project Create

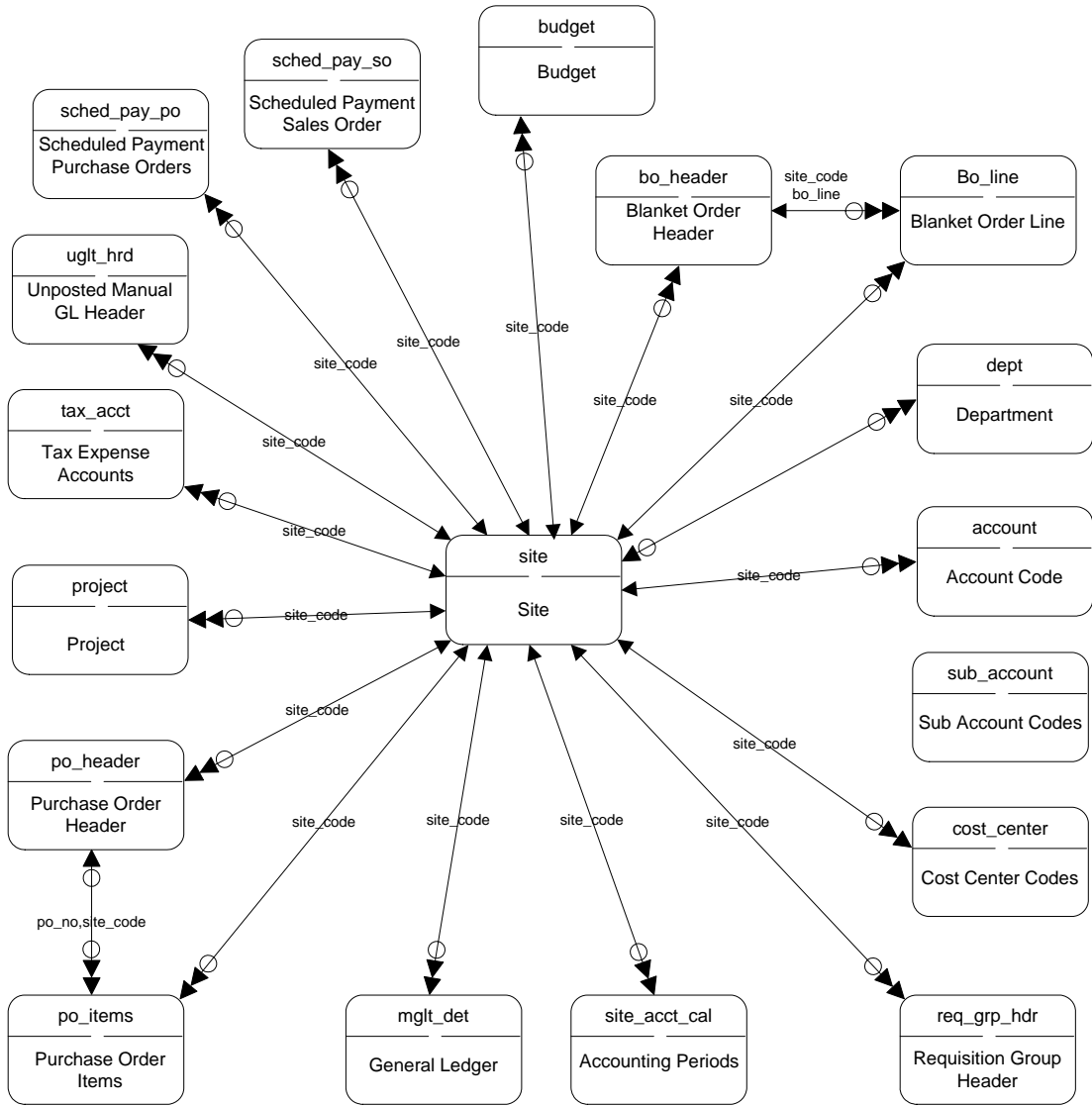


Zero, One, or Multiple	◀◀○	○▶▶	Zero, One, or Multiple	One or Multiple	◀◀	▶▶	More than One
Zero, One, or Multiple	◀◀○	▶▶	One or Multiple	One or Multiple	◀◀	▶▶	One or Multiple
Zero, One, or Multiple	◀◀○	▶▶	More than One	More than One	◀◀	▶▶	More than One

Finance - Project Routing-Authorize

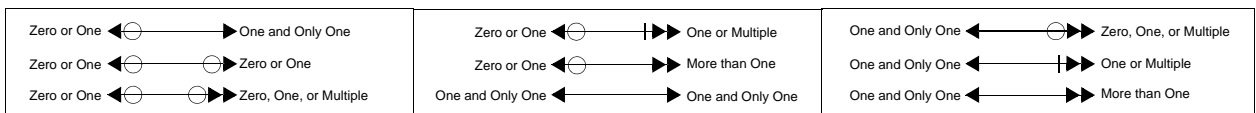
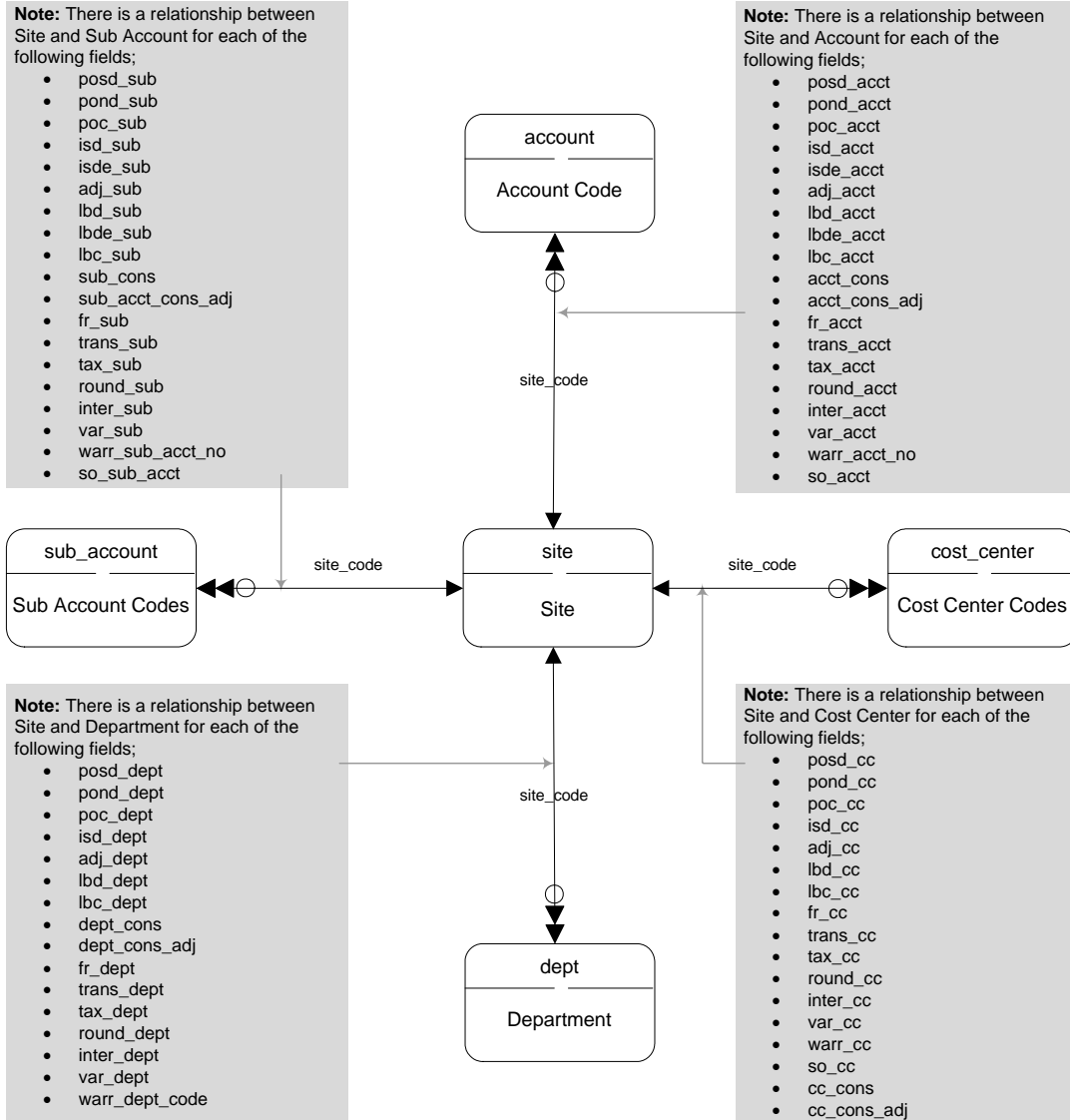


Finance - Site Financials

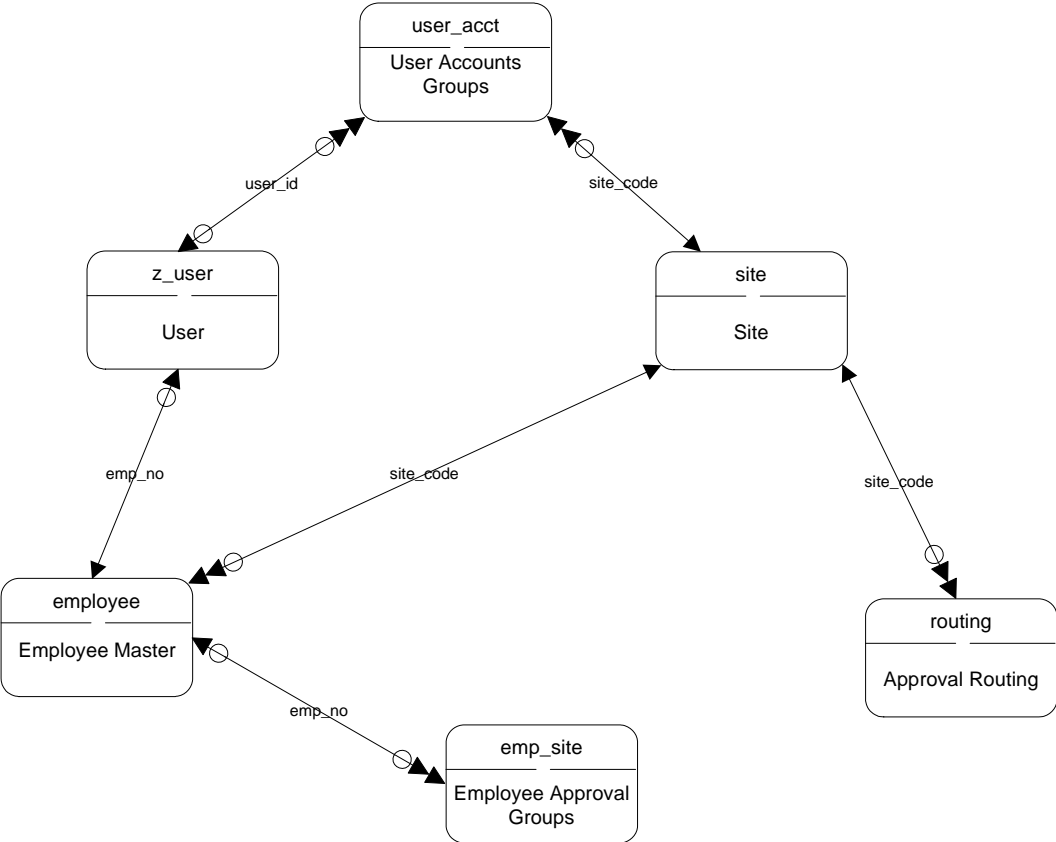


Zero, One, or Multiple	One or Multiple	Zero, One, or Multiple	More than One
Zero, One, or Multiple	One or Multiple	One or Multiple	One or Multiple
Zero, One, or Multiple	More than One	More than One	More than One

Finance - Site GL



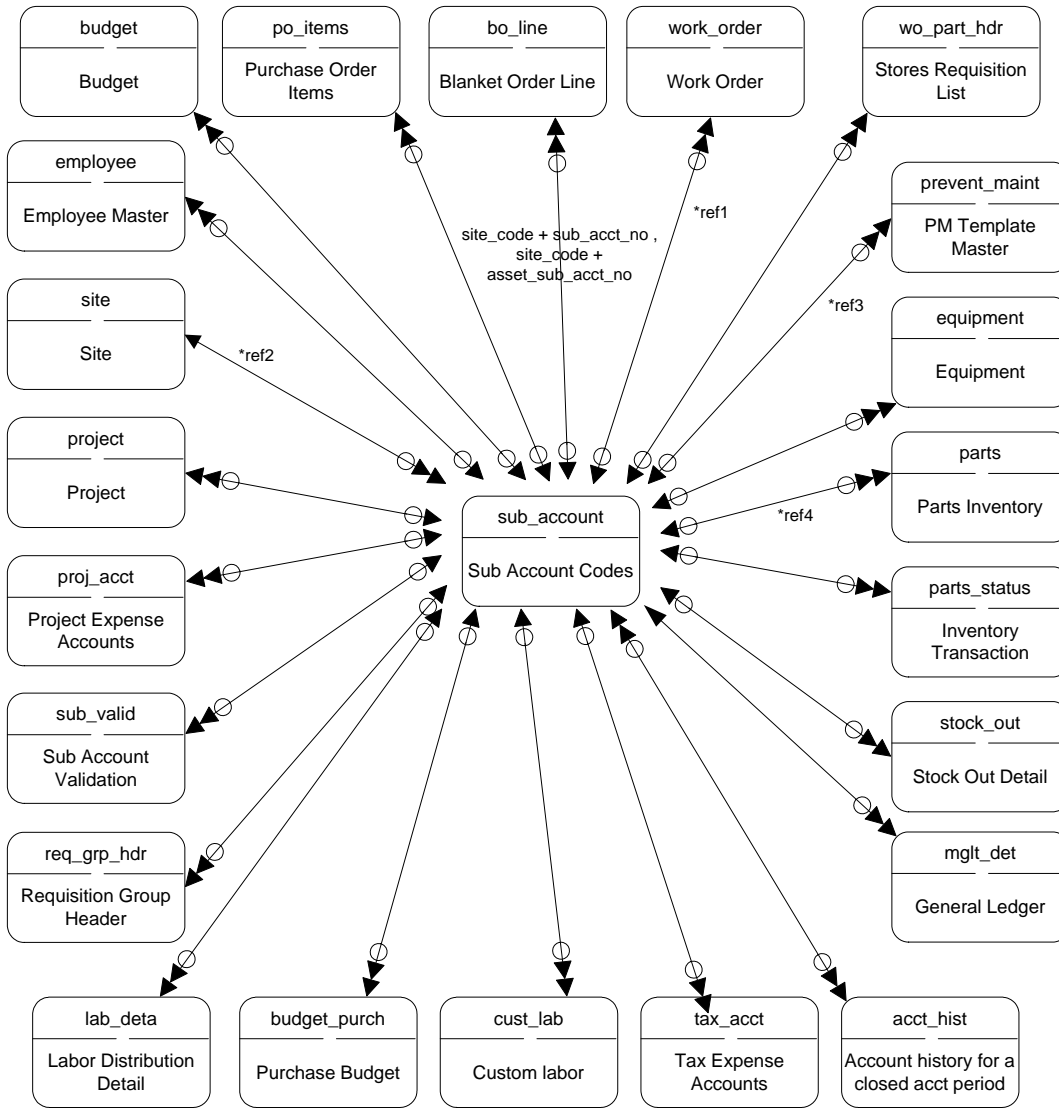
Finance - Site Miscellaneous



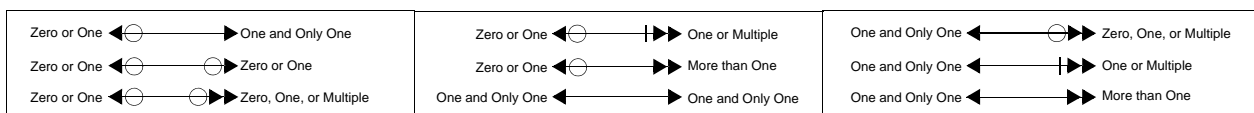
Zero, One, or Multiple	◌	◌	Zero, One, or Multiple	One or Multiple	◌	◌	More than One
Zero, One, or Multiple	◌	◌	One or Multiple	One or Multiple	◌	◌	One or Multiple
Zero, One, or Multiple	◌	◌	More than One	More than One	◌	◌	More than One

Finance - Sub Account I

Note: Joining fields are combination of 'site_code' and 'sub_acct_no' if not specified

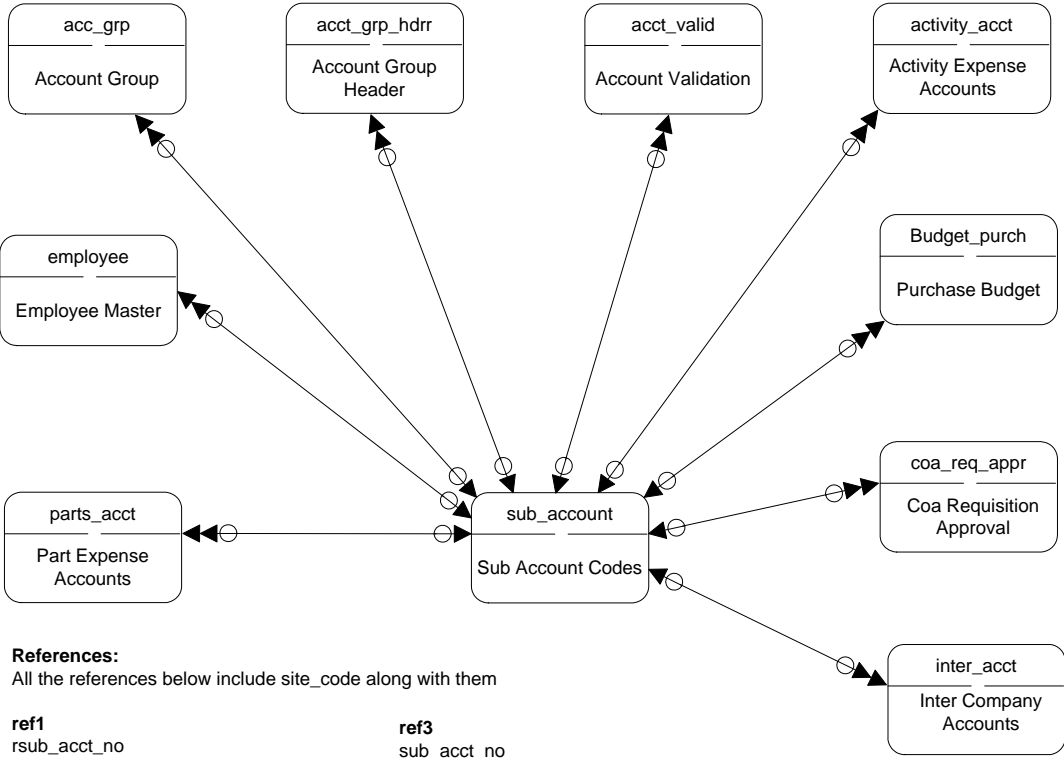


**Please refer Sub Account II for references(ref's)



Finance - Sub Account II

Note: Joining fields are combination of 'site_code' and 'sub_acct_no' if not specified



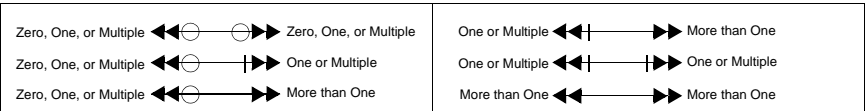
References:
All the references below include site_code along with them

ref1
rsub_acct_no
sub_acct_no
sub_acct_noc
sub_acct_nop

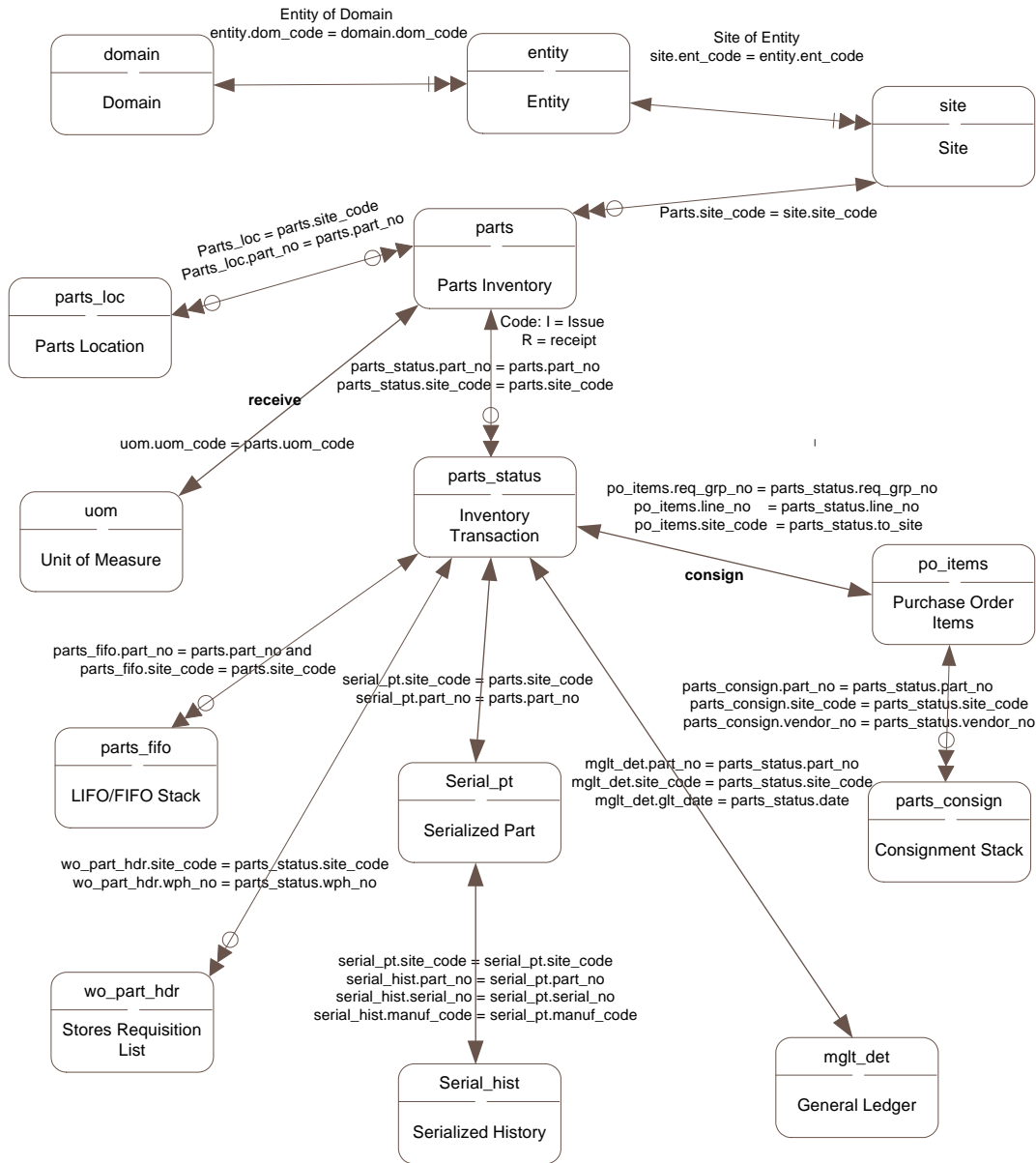
ref3
sub_acct_no
sub_acct_noc
sub_acct_nop

ref2
so_sub_acct
sub_acct_cons_adj
warr_sub_acct_no

ref4
sub_acct_adj
sub_acct_cons_adj
sub_acct_no
sub_acct_noe

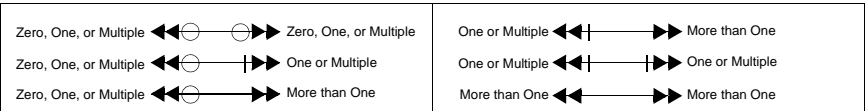
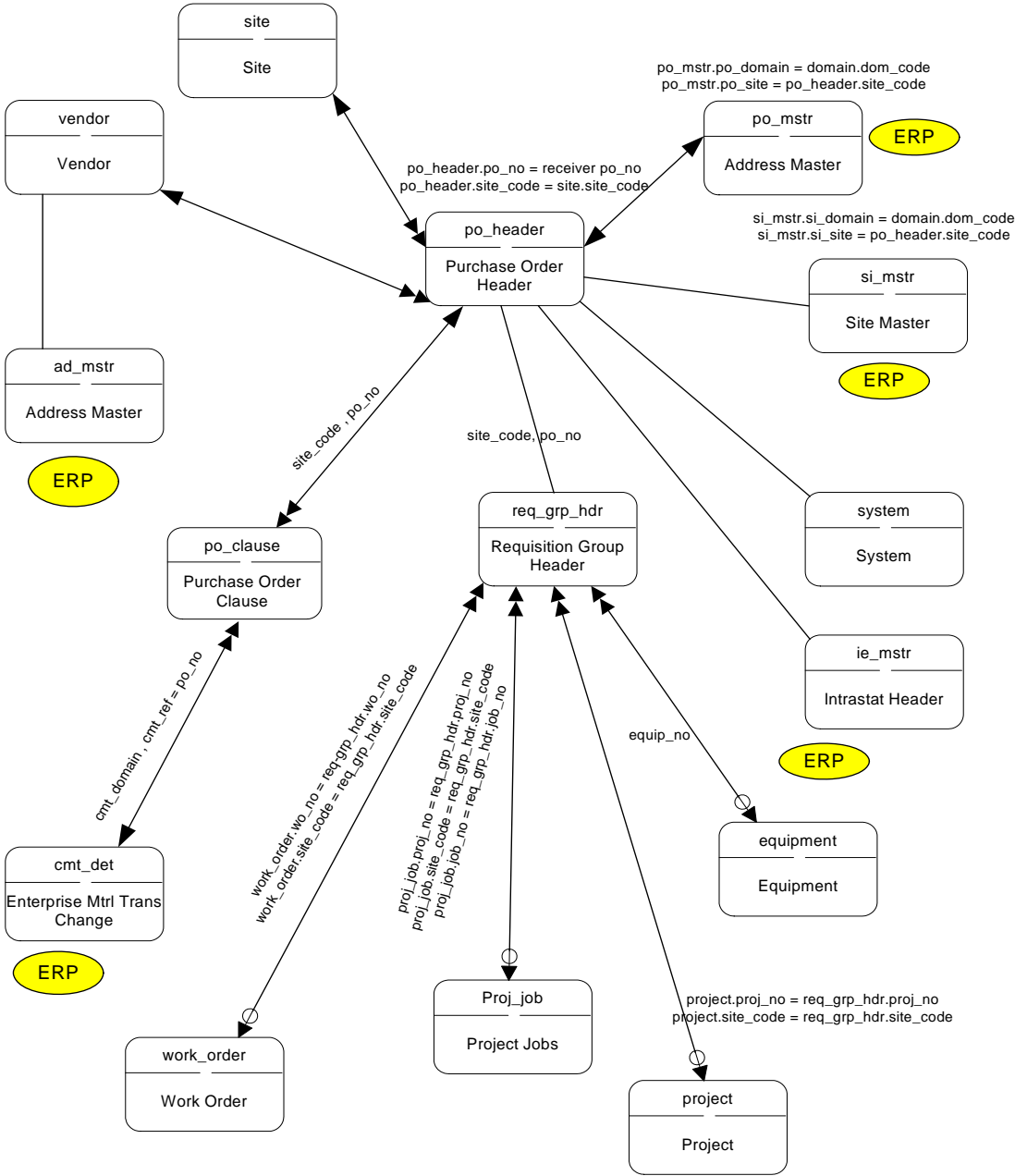


Inventory Transaction

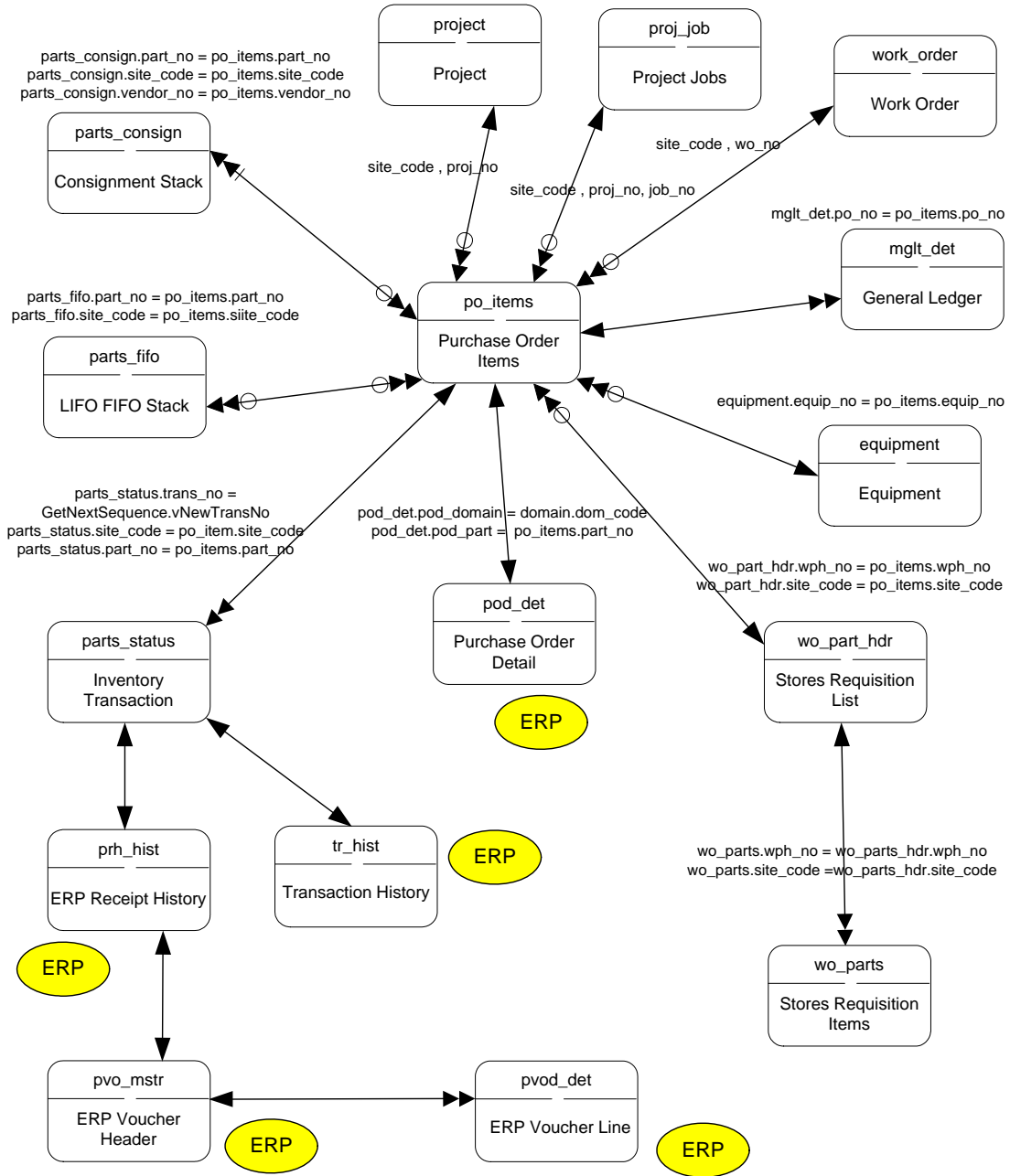


Zero or One $\leftarrow \ominus \longrightarrow$ One and Only One	Zero or One $\leftarrow \ominus \parallel \longrightarrow$ One or Multiple	One and Only One $\leftarrow \ominus \circ \longrightarrow$ Zero, One, or Multiple
Zero or One $\leftarrow \ominus \circ \longrightarrow$ Zero or One	Zero or One $\leftarrow \ominus \longrightarrow$ More than One	One and Only One $\leftarrow \ominus \parallel \longrightarrow$ One or Multiple
Zero or One $\leftarrow \ominus \circ \longrightarrow$ Zero, One, or Multiple	One and Only One $\leftarrow \ominus \longrightarrow$ One and Only One	One and Only One $\leftarrow \ominus \longrightarrow$ More than One

PO Receipt-Return I

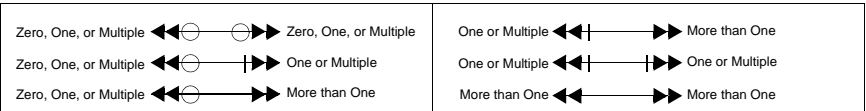
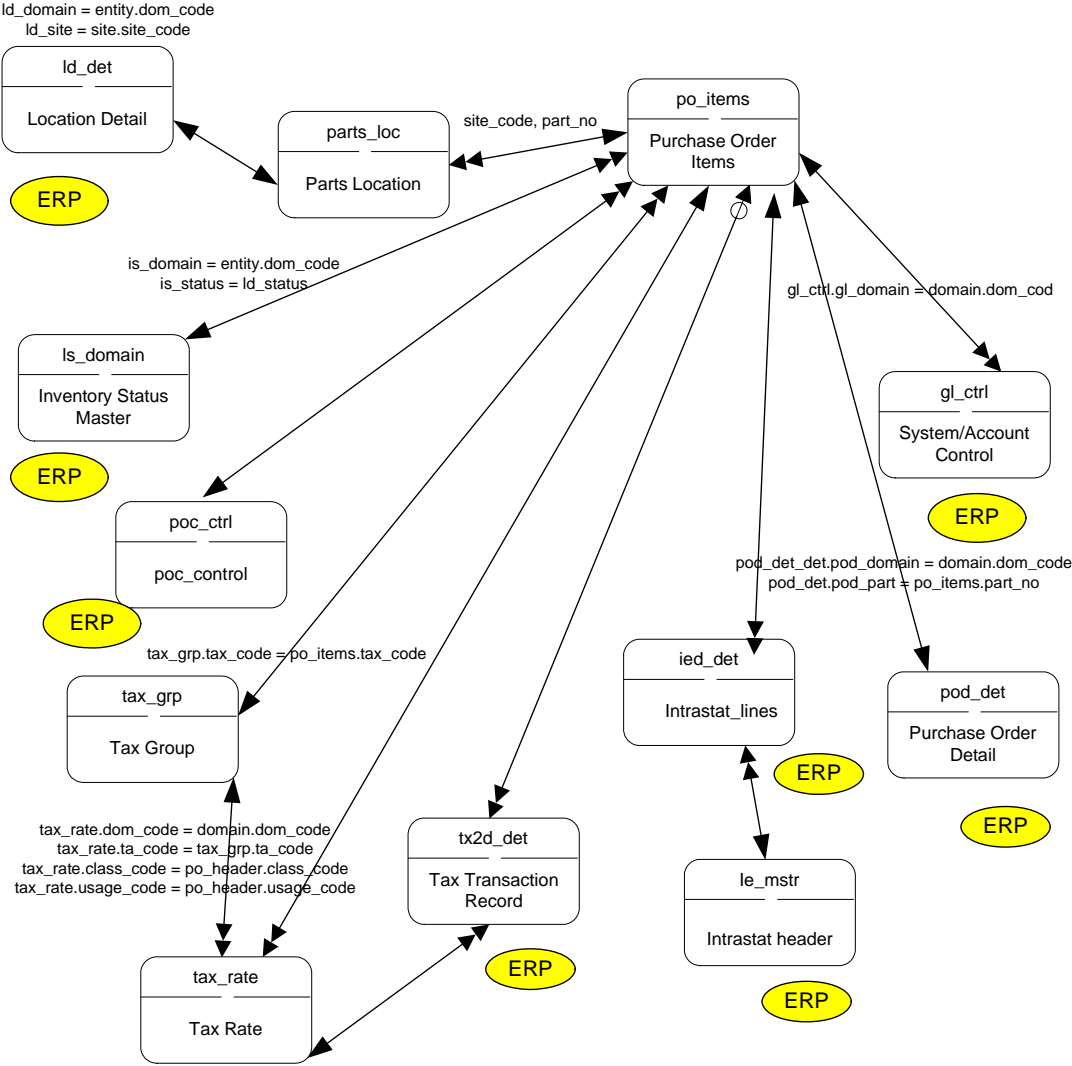


PO Receipt-Return II

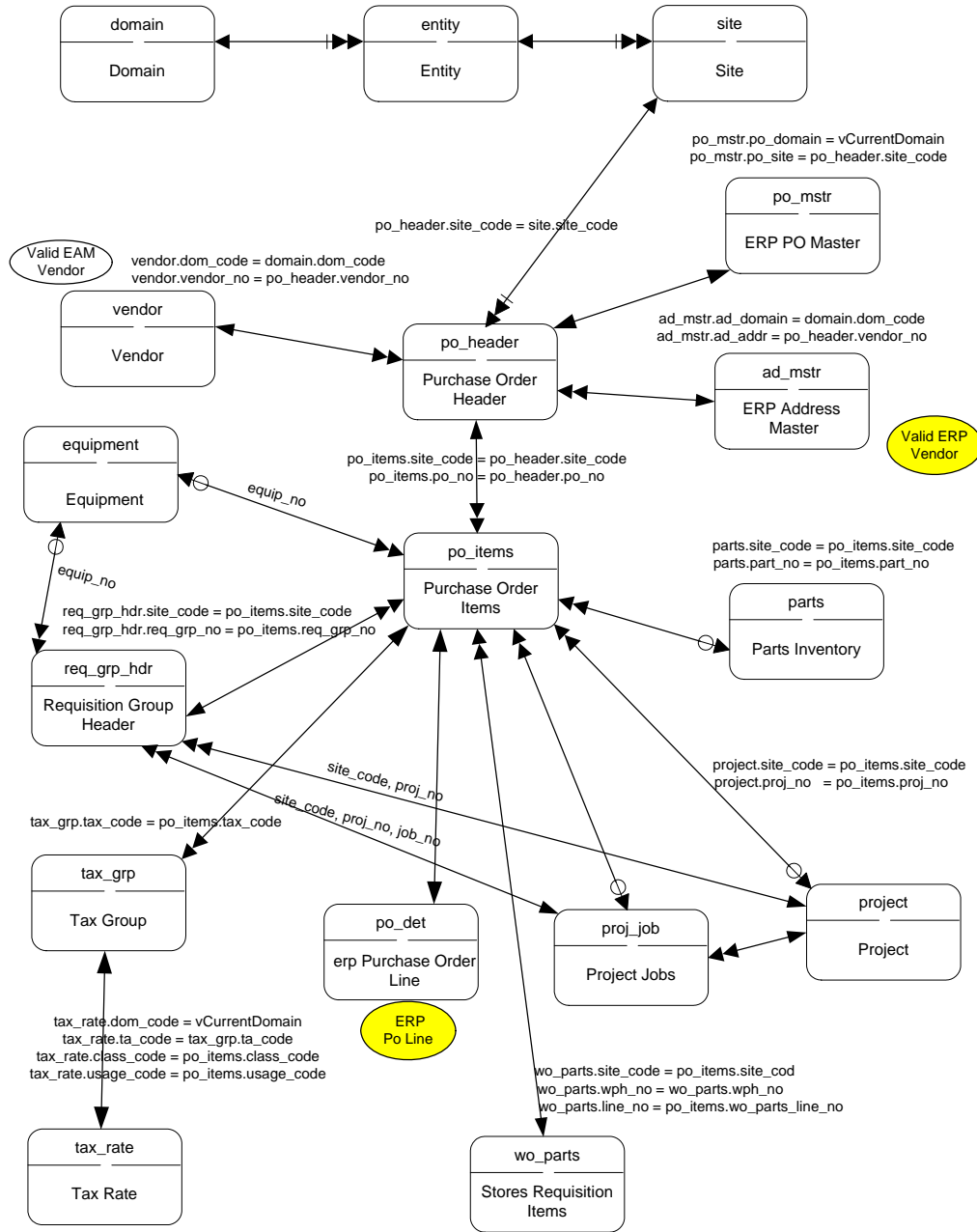


Zero or One $\leftarrow \ominus \longrightarrow$ One and Only One	Zero or One $\leftarrow \ominus \parallel \longrightarrow$ One or Multiple	One and Only One $\leftarrow \ominus \circ \longrightarrow$ Zero, One, or Multiple
Zero or One $\leftarrow \ominus \circ \longrightarrow$ Zero or One	Zero or One $\leftarrow \ominus \longrightarrow$ More than One	One and Only One $\leftarrow \ominus \parallel \longrightarrow$ One or Multiple
Zero or One $\leftarrow \ominus \circ \longrightarrow$ Zero, One, or Multiple	One and Only One $\leftarrow \ominus \longrightarrow$ One and Only One	One and Only One $\leftarrow \ominus \circ \longrightarrow$ More than One

PO Receipt-Return III



Purchase Order Header



Zero or One $\leftarrow \ominus \rightarrow$ One and Only One	Zero or One $\leftarrow \ominus \dashrightarrow$ One or Multiple	One and Only One $\leftarrow \ominus \rightarrow$ Zero, One, or Multiple
Zero or One $\leftarrow \ominus \rightarrow$ Zero or One	Zero or One $\leftarrow \ominus \dashrightarrow$ More than One	One and Only One $\leftarrow \ominus \dashrightarrow$ One or Multiple
Zero or One $\leftarrow \ominus \rightarrow$ Zero, One, or Multiple	One and Only One $\leftarrow \ominus \rightarrow$ One and Only One	One and Only One $\leftarrow \ominus \dashrightarrow$ More than One

EAM Table/Diagram Cross-Reference

This chapter provides a cross-reference of tables and the diagrams in which they appear.

EAM Cross-Reference

Table 3.1 lists standard tables in alphabetical order and indicates the diagrams where the tables appear.

Table 3.1
Database Table Cross-Reference

Table	Table Description	Diagram
acc_grp	Account Group	Finance - Account II
acc_grp	Account Group	Finance - Sub Account II
account	Account Code	Finance - Account II
account	Account Code	Finance - GL Accounts
account	Account Code	Finance - Site
account	Account Code	Finance - Site Financials
acct_grp_hdr	Account Group Header	Finance - Account II
acct_grp_hdr	Account Group Header	Finance - Sub Account II
acct_cal	Accounting Calendar Period	Finance - Domain
acct_cal_yr	Accounting Calendar Year	Finance - Domain
acct_grp	Account Grouping	Finance - Account I
acct_hist	Account History for a Closed Accounting Period	Finance - Account I
acct_hist	Account History for a Closed Accounting Period	Finance - Cost Center I
acct_hist	Account History for a Closed Accounting Period	Finance - Department I
acct_hist	Account History for a Closed Accounting Period	Finance - Sub Account I
acct_valid	Account Validation	Finance - Account I
acct_valid	Account Validation	Finance - Account II
acct_valid	Account Validation	Finance - Sub Account II
activity_acct	Activity Expense Account	Finance - Account II
activity_acct	Activity Expense Account	Finance - Cost Center II
activity_acct	Activity Expense Account	Finance - Department II
activity_acct	Activity Expense Account	Finance - Sub Account II
ad_mstr	Address Master	PO Receipt-Return I
ad_mstr	Address Master	Purchase Order Header
appr_grp	Approval Group Users	Blanket PO Approval
appr_grp_hdr	Approval Routing Groups	Blanket PO Approval
appr_grp_hdr	Approval Routing Groups	Finance - Project Routing-Authorize
bill_to	Bill To Codes and Addresses	Finance - Domain
bo_header	Blanket Order Header	Blanket PO Approval
bo_header	Blanket Order Header	Blanket PO Release
bo_header	Blanket Order Header	Finance - Site Financials
bo_line	Blanket Order Line	Blanket PO Approval
bo_line	Blanket Order Line	Blanket PO Release
bo_line	Blanket Order Line	Finance - Account I
bo_line	Blanket Order Line	Finance - Cost Center I

Table 3.1 — Database Table Cross-Reference — (Page 1 of 8)

Table	Table Description	Diagram
bo_line	Blanket Order Line	Finance - Department I
bo_line	Blanket Order Line	Finance - Site Financials
bo_line	Blanket Order Line	Finance - Sub Account I
budget	Budget	Finance - Account I
budget	Budget	Finance - Cost Center I
budget	Budget	Finance - Site Financials
budget	Budget	Finance - Sub Account I
budget_purch	Purchase Budget	Finance - Account I
budget_purch	Purchase Budget	Finance - Account II
budget_purch	Purchase Budget	Finance - Cost Center I
budget_purch	Purchase Budget	Finance - Sub Account I
budget_purch	Purchase Budget	Finance - Sub Account II
cc_grp	Cost Center Group	Finance - Cost Center I
coa_req_appr	COA Requisition Approval	Finance - Account II
coa_req_appr	COA Requisition Approval	Finance - Sub Account II
cost_center	Cost Center Codes	Finance - Cost Center I
cost_center	Cost Center Codes	Finance - Cost Center II
cost_center	Cost Center Codes	Finance - GL Accounts
cost_center	Cost Center Codes	Finance - Site
cost_center	Cost Center Codes	Finance - Site Financials
cmt_det	Enterprise Material Trans Change	PO Receipt-Return I
credit_terms	Term Codes	Finance - Domain
curr_exch	Currency Exchange Rates	Finance - Domain
currency	Currency Codes	Finance - GL Accounts
cust_lab	Custom Labor	Finance - Account I
cust_lab	Custom Labor	Finance - Cost Center I
cust_lab	Custom Labor	Finance - Department I
cust_lab	Custom Labor	Finance - Sub Account I
dept	Department	Finance - Department I
dept	Department	Finance - Department II
dept	Department	Finance - GL Accounts
dept	Department	Finance - Site
dept	Department	Finance - Site Financials
domain	Domain	Domain - Blanket PO Release
domain	Domain	Domain - Site Relation
domain	Domain	Inventory Transaction
domain	Domain	Finance - Domain
domain	Domain	Purchase Order Header
emp_site	Employee Approval Groups	Finance - GL General
emp_site	Employee Approval Groups	Finance - Site Miscellaneous

Table 3.1 — Database Table Cross-Reference — (Page 2 of 8)

Table	Table Description	Diagram
employee	Employee Master	Finance - Account I
employee	Employee Master	Finance - Account II
employee	Employee Master	Finance - Cost Center I
employee	Employee Master	Finance - Department I
employee	Employee Master	Finance - GL General
employee	Employee Master	Finance - Site Miscellaneous
employee	Employee Master	Finance - Sub Account I
employee	Employee Master	Finance - Sub Account II
entity	Entity	Blanket PO Release
entity	Entity	Domain - Site Relation
entity	Entity	Finance - Domain
entity	Entity	Finance - GL General
entity	Entity	Inventory Transaction
entity	Entity	Purchase Order Header
equipment	Equipment	Finance - Account I
equipment	Equipment	Finance - Cost Center I
equipment	Equipment	Finance - Department I
equipment	Equipment	Finance - Sub Account I
equipment	Equipment	PO Receipt-Return I
equipment	Equipment	PO Receipt-Return II
equipment	Equipment	Purchase Order Header
fa_revision	Fixed Asset Revision	Finance - Domain
fa_xref	Fixed Asset Xref	Finance - Domain
fa_xref	Fixed Asset Xref	Finance - Project Create
gl_ctrl	System Account Control	PO Receipt-Return III
hist_exrate	Historical Exchange Rate Detail	Finance - Account I
ie_mstr	Intrastat Header	PO Receipt-Return I
ie_mstr	Intrastat Header	PO Receipt-Return III
ied_det	Intrastat Lines	PO Receipt-Return III
inter_acct	Inter Company Accounts	Finance - Account II
inter_acct	Inter Company Accounts	Finance - Cost Center II
inter_acct	Inter Company Accounts	Finance - Department II
inter_acct	Inter Company Accounts	Finance - Sub Account II
is_domain	Inventory Status Master	PO Receipt-Return III
lab_deta	Labor Distribution Detail	Finance - Account I
lab_deta	Labor Distribution Detail	Finance - Cost Center I
lab_deta	Labor Distribution Detail	Finance - Department I
lab_deta	Labor Distribution Detail	Finance - Sub Account I
language	Language Codes	Finance - Domain
ld_det	Location Detail	PO Receipt-Return III

Table 3.1 — Database Table Cross-Reference — (Page 3 of 8)

Table	Table Description	Diagram
line_no	Line Item	Finance - Accounts Payable
mfg_equip	Equipment mapping to MFG/PRO	Finance - Domain
mgl_t_det	General Ledger	Finance - Account I
mgl_t_det	General Ledger	Finance - Accounts Payable
mgl_t_det	General Ledger	Finance - Cost Center I
mgl_t_det	General Ledger	Finance - Department I
mgl_t_det	General Ledger	Finance - GL Accounts
mgl_t_det	General Ledger	Finance - GL General
mgl_t_det	General Ledger	Finance - GL Project
mgl_t_det	General Ledger	Finance - GL Work Order
mgl_t_det	General Ledger	Finance - GL Work Order II
mgl_t_det	General Ledger	Finance - GL Unposted Transactions
mgl_t_det	General Ledger	Finance - Site Financials
mgl_t_det	General Ledger	Finance - Sub Account I
mgl_t_det	General Ledger	Inventory Transaction
mgl_t_det	General Ledger	PO Receipt-Return II
ovhd_rate	Overhead Rate	Finance - Cost Center II
ovhd_rate	Overhead Rate	Finance - Department II
parts	Parts Inventory	Blanket PO Release
parts	Parts Inventory	Finance - Account I
parts	Parts Inventory	Finance - Cost Center I
parts	Parts Inventory	Finance - Department I
parts	Parts Inventory	Finance - Sub Account I
parts	Parts Inventory	Inventory Transaction
parts	Parts Inventory	Purchase Order Header
parts_acct	Part Expense Accounts	Finance - Account II
parts_acct	Part Expense Accounts	Finance - Cost Center II
parts_acct	Part Expense Accounts	Finance - Department II
parts_acct	Part Expense Accounts	Finance - Sub Account II
parts_consign	Consignment Stack	Inventory Transaction
parts_consign	Consignment Stack	PO Receipt-Return II
parts_fifo	LIFO/FIFO Stack	Inventory Transaction
parts_fifo	LIFO/FIFO Stack	PO Receipt-Return II
parts_loc	Parts Location	Inventory Transaction
parts_loc	Parts Location	PO Receipt-Return III
parts_status	Inventory Transaction	Finance - Account I
parts_status	Inventory Transaction	Finance - Cost Center I
parts_status	Inventory Transaction	Finance - Department I
parts_status	Inventory Transaction	Finance - Sub Account I
parts_status	Inventory Transaction	Inventory Transaction

Table 3.1 — Database Table Cross-Reference — (Page 4 of 8)

Table	Table Description	Diagram
parts_status	Inventory Transaction	PO Receipt-Return II
pl_equip	Equip to MFG Production Line	Finance - Domain
po_clause	Purchase Order Clause	PO Receipt-Return I
po_det	ERP Purchase Order Line	Purchase Order Header
po_header	Purchase Order Header	Blanket PO Release
po_header	Purchase Order Header	Finance - Accounts Payable
po_header	Purchase Order Header	Finance - Site Financials
po_header	Purchase Order Header	PO Receipt-Return I
po_items	Purchase Order Items	Blanket PO Release
po_items	Purchase Order Items	Finance - Accounts Payable
po_items	Purchase Order Items	Finance - Site Financials
po_items	Purchase Order Items	Finance - Account I
po_items	Purchase Order Items	Finance - Cost Center I
po_items	Purchase Order Items	Finance - Department I
po_items	Purchase Order Items	Finance - Sub Account I
po_items	Purchase Order Items	Inventory Transaction
po_items	Purchase Order Items	PO Receipt-Return II
po_items	Purchase Order Items	PO Receipt-Return III
po_items	Purchase Order Items	Purchase Order Header
po_mstr	ERP PO Master	PO Receipt-Return I
po_mstr	ERP PO Master	Purchase Order Header
poc_ctrl	POC Control	PO Receipt-Return III
pod_det	Purchase Order Detail	PO Receipt-Return II
pod_det	Purchase Order Detail	PO Receipt-Return III
prevent_maint	PM Template Master	Finance - Account I
prevent_maint	PM Template Master	Finance - Cost Center I
prevent_maint	PM Template Master	Finance - Department I
prevent_maint	PM Template Master	Finance - Sub Account I
prh_hist	ERP Receipt History	PO Receipt-Return II
product_line	Product Line	Finance - Domain
proj_acct	Project Expense Accounts	Finance - Account I
proj_acct	Project Expense Accounts	Finance - Cost Center I
proj_acct	Project Expense Accounts	Finance - Department I
proj_acct	Project Expense Accounts	Finance - Sub Account I
proj_budg	Annual Project Budgets	Finance - GL Project
proj_job	Project Jobs	Finance - GL Project
proj_job	Project Jobs	Finance - Project Create
proj_job	Project Jobs	Finance - Project Routing-Authorize
proj_job	Project Jobs	PO Receipt-Return I
proj_job	Project Jobs	PO Receipt-Return II

Table 3.1 — Database Table Cross-Reference — (Page 5 of 8)

Table	Table Description	Diagram
proj_job	Project Jobs	Purchase Order Header
proj_status	Project Status Codes	Finance - Project Create
proj_year	Yearly Project Costs	Finance - GL Projects
project	Project	Finance - Account I
project	Project	Finance - Cost Center I
project	Project	Finance - Department I
project	Project	Finance - GL Project
project	Project	Finance - Project Create
project	Project	Finance - Project Routing-Authorize
project	Project	Finance - Site Financials
project	Project	Finance - Sub Account I
project	Project	PO Receipt-Return I
project	Project	PO Receipt-Return II
project	Project	Purchase Order Header
pvo_mstr	ERP Voucher Header	PO Receipt-Return II
pvod_det	ERP Voucher Line	PO Receipt-Return II
req_grp_hdr	Requisition Group Header	Blanket PO Release
req_grp_hdr	Requisition Group Header	Finance - Account I
req_grp_hdr	Requisition Group Header	Finance - Accounts Payable
req_grp_hdr	Requisition Group Header	Finance - Cost Center I
req_grp_hdr	Requisition Group Header	Finance - Department I
req_grp_hdr	Requisition Group Header	Finance - Site Financials
req_grp_hdr	Requisition Group Header	Finance - Sub Account I
req_grp_hdr	Requisition Group Header	PO Receipt-Return I
req_grp_hdr	Requisition Group Header	Purchase Order Header
rfq_header	Request for Quote Master	Finance - Department I
routing	Approval Routing	Blanket PO Approval
routing	Approval Routing	Finance - Project Routing-Authorize
routing	Approval Routing	Finance - Site Miscellaneous
sched_pay_po	Scheduled Payment Purchase Orders	Finance - Site Financials
sched_pay_so	Scheduled Payment Sales Orders	Finance - Site Financials
serial_hist	Serialized History	Inventory Transaction
serial_pt	Serialized Part	Inventory Transaction
ship_to	Ship To	Finance - Domain
si_mstr	Site Master	PO Receipt-Return I
site	Site	Blanket PO Approval
site	Site	Blanket PO Release
site	Site	Domain - Site Relation
site	Site	Finance - Account I
site	Site	Finance - Cost Center I

Table 3.1 — Database Table Cross-Reference — (Page 6 of 8)

Table	Table Description	Diagram
site	Site	Finance - Department I
site	Site	Finance - Sub Account I
site	Site	Finance - GL General
site	Site	Finance - Project Create
site	Site	Finance - Project Routing-Authorize
site	Site	Finance - Site
site	Site	Finance - Site Financials
site	Site	Finance - Site Miscellaneous
site	Site	Inventory Transaction
site	Site	PO Receipt-Return I
site	Site	Purchase Order Header
site_acct_cal	Accounting Periods	Finance - Domain
site_acct_cal	Accounting Periods	Finance - Site Financials
std_clause	Standard Clause Codes	Finance - Domain
stock_out	Stock Out Detail	Finance - Account I
stock_out	Stock Out Detail	Finance - Cost Center I
stock_out	Stock Out Detail	Finance - Department I
stock_out	Stock Out Detail	Finance - Sub Account I
sub_account	Sub Account Codes	Finance - GL Accounts
sub_account	Sub Account Codes	Finance - Site
sub_account	Sub Account Codes	Finance - Site Financials
sub_account	Sub Account Codes	Finance - Sub Account I
sub_account	Sub Account Codes	Finance - Sub Account II
sub_valid	Sub Account Validation	Finance - Sub Accounts I
system	System	PO Receipt-Return I
tax_acct	Tax Expense Accounts	Finance - Site Financials
tax_acct	Tax Expense Accounts	Finance - Account I
tax_acct	Tax Expense Accounts	Finance - Cost Center I
tax_acct	Tax Expense Accounts	Finance - Department I
tax_acct	Tax Expense Accounts	Finance - Sub Account I
tax_grp	Tax Group	PO Receipt-Return III
tax_grp	Tax Group	Purchase Order Header
tax_rate	Tax Rate	Finance - Domain
tax_rate	Tax Rate	PO Receipt-Return III
tax_rate	Tax Rate	Purchase Order Header
tr_hist	Transaction History	PO Receipt-Return II
tx2d_det	Tax Transaction Record	PO Receipt-Return III
uglt_det	Unposted Manual GL Transactions	Finance - GL Unposted Transactions
uglt_hrd	Unposted Manual GL Header	Finance - GL Unposted Transactions
uglt_hrd	Unposted Manual GL Header	Finance - Site Financials

Table 3.1 — Database Table Cross-Reference — (Page 7 of 8)

Table	Table Description	Diagram
uom	Unit of Measure	Inventory Transaction
user_acct	User Accounts Groups	Finance - Site Miscellaneous
vendor	Vendor	Blanket PO Release
vendor	Vendor	Finance - Domain
vendor	Vendor	Purchase Order Header
vendor	Vendor	PO Receipt-Return I
vendor_currency	Vendor Currency	Finance - Domain
vn_clause	Vendor Default Standard Clauses	Finance - Domain
vn_comm	Vendor Commodity Codes	Finance - Domain
vn_contact	Vendor Contacts	Finance - Domain
wo_part_hdr	Stores Requisition List	Finance - Account I
wo_part_hdr	Stores Requisition List	Finance - Cost Center I
wo_part_hdr	Stores Requisition List	Finance - Department I
wo_part_hdr	Stores Requisition List	Finance - GL Work Order
wo_part_hdr	Stores Requisition List	Finance - Sub Account I
wo_part_hdr	Stores Requisition List	Inventory Transaction
wo_part_hdr	Stores Requisition List	PO Receipt-Return II
wo_parts	Stores Requisition Items	Finance - GL Work Order
wo_parts	Stores Requisition Items	Purchase Order Header
wo_parts	Stores Requisition Items	PO Receipt-Return II
work_order	Work Order	PO Receipt-Return I
work_order	Work Order	PO Receipt-Return II
work_order	Work Order	Finance - Account I
work_order	Work Order	Finance - Cost Center I
work_order	Work Order	Finance - Department I
work_order	Work Order	Finance - GL Work Order II
work_order	Work Order	Finance - Sub Account i
wph_grp_hdr	Stores Requisition List Approval Groups	Finance - Account I
wph_grp_hrd	Multi-Line Requisition Master	Finance - Cost Center I
z_user	User	Blanket PO Approval
z_user	User	Finance - Project Routing-Authorize
z_user	User	Finance - Site Miscellaneous

Table 3.1 — Database Table Cross-Reference — (Page 8 of 8)

Product Information Resources

QAD offers a number of online resources to help you get more information about using QAD products.

[QAD Forums \(community.qad.com\)](https://community.qad.com)

Ask questions and share information with other members of the user community, including QAD experts.

[QAD Knowledgebase \(knowledgebase.qad.com\)*](https://knowledgebase.qad.com)

Search for answers, tips, or solutions related to any QAD product or topic.

[QAD Document Library \(www.qad.com/documentlibrary\)](http://www.qad.com/documentlibrary)

Get browser-based access to user guides, release notes, training guides, and so on; use powerful search features to find the document you want, then read online, or download and print PDF.

[QAD Learning Center \(learning.qad.com\)*](https://learning.qad.com)

Visit QAD's one-stop destination for all courses and training materials.

*Log-in required

Index

B

Blanket PO Approval 12

Blanket PO Release 13

C

Configured Messages 28

D

Domain - Site Relation 14

F

Finance - Account I 15

Finance - Account II 16

Finance - Accounts Payable 17

Finance - Cost Center I 18

Finance - Cost Center II 19

Finance - Department I 20

Finance - Department II 21

Finance - Domain 22

Finance - GL Accounts 23

Finance - GL General 24

Finance - GL Project 25

Finance - GL Un-posted Transactions 26

Finance - GL Work Order I 27

Finance - GL Work Order II 28

Finance - Project Create 29

Finance - Project Routing-Authorize 30

Finance - Site Financials 31

Finance - Site GL 32

Finance - Site Miscellaneous 33

Finance - Sub Account I 34

Finance - Sub Account II 35

I

Inventory Transaction 36

P

PO Receipt-Return I 37

PO Receipt-Return II 38

PO Receipt-Return III 39

Purchase Order Header 40

