

QAD Enterprise Asset Management 2017.1 with Channel Islands — San Miguel 2 Release Notes

September 2018

These release notes include information about Enterprise Asset Management when it is integrated with the Asset Management app within Channel Islands — San Miguel 2. These changes may affect the way you implement and use Enterprise Asset Management.

Review this document and the Enterprise Asset Management installation documentation *before* proceeding with any phase of an Enterprise Asset Management implementation.

QAD highly recommends that you implement the latest Enterprise Asset Management release available. Check the QAD Web site to make sure you have the latest release notes, user guide, installation guide, and installation media:

<http://support.qad.com>

Use the following list to find a specific release:

<i>Release Notes for the Current Release</i>	2
<i>Release Notes for EAM 2017.1 Release</i>	5
<i>Release Notes for EAM 2017 Release</i>	11
<i>Release Notes for the EAM 2016.1 Release</i>	23
<i>Release Notes for the EAM 2016 Release</i>	39

Release Notes for the Current Release

For information specific to the September 2017 release of EAM 2017.1, see “Release Notes for EAM 2017.1 Release” on page 5. The following information is only for EAM customers who are integrating with Channel Islands — San Miguel 2.

Enterprise Asset Management Version: 2017.1 (13.3)

Date: September 2018

QAD Enterprise Applications Versions: Enterprise Edition 2016 and later in conjunction with Channel Islands — San Miguel 2.

Languages Supported: English, Latin American Spanish, Castilian Spanish, Czech, Polish, French, German, Brazilian Portuguese, Simplified Chinese, Korean, Bulgarian, Hungarian.

Overview

The Asset Management app in the QAD Web UI is enabled during Channel Islands installation by enabling EAM Requisitions Integration. Using the Asset Management app in the QAD Web UI changes how you are able to use EAM in the QAD .NET UI because some functionality related to purchasing, such as purchase orders, moves exclusively to the QAD Web UI.

In Asset Management, work orders are now called asset work orders, and EAM service requests are called maintenance requests. EAM in the QAD .NET UI retains the original naming conventions.

New features include:

- Asset Work Orders (hybrid view)
- Asset Work Order Close (hybrid view)
- Maintenance Requests (hybrid view)
- Maintenance Manager (action center)
- Projects, with Jobs form grid (view-only)

Post-Installation Instructions

After the installation is complete, you must perform additional configuration steps. These steps should be completed by an administrator who has extensive experience with YAB, or in coordination with QAD Support or Services.

Note These instructions only apply to on-premise installations of Channel Islands — San Miguel 2. If your system is hosted by QAD in the Cloud, these steps are automatically handled by QAD.

Update the EAM Database

You must move data from the schema storage area to the app-specific storage area. This action is done by running a database conversion process against the EAM database. Refer to the `database-storage-area-resolve` command in the *QAD Administration and Configuration Guide* for YAB 1.8 on the QAD Document Library.

Data Synchronization

Some types of EAM data must be synchronized with EE data to ensure the new unified purchasing process operates smoothly. The following table describes the EAM data synchronization requirements.

Table 1 EAM Data Synchronization Requirements

Data Source	Channel Islands Data Entry	EAM Synchronization
Supplier	Lookup and field validations based on EE suppliers	Vendor Download (EAM)
Site	Lookup and field validations are based on EE Sites User site security is validated against EE Site Security Maintenance	Sites must be created in Domain (EAM) with the same code as in EE. Note: You will still encounter save errors for sites that do not exist in EAM.
Project	Lookup and field validations are based on EE GL Project Codes and Project Masks.	Project Download (EAM) EAM Project Accounting validations still occur when applicable.
Job	Not Synchronized When a project exists in EAM, then EAM job lookup and validation are used. For requisitions, this is an MRO requisition when EAM is enabled. When a project does not exist in EAM, then EE job lookup and EE job validation are used. For requisitions, this is direct requisitions and MRO when EAM is not enabled.	
Sub-Account	Lookup and field validations are based on EE. Validations are based on EE for purchase orders, receipts, and returns.	EE Sub-Account Download (EAM) Note: EAM validations for valid values downloaded into EAM still occur for requisitions.
Account	Lookup and field validations are based on EE. Validations are based on EE for purchase orders, receipts, and returns.	EE Account Download (EAM) Note: EAM validations for valid values downloaded into EAM still occur for requisitions.
Cost Center	Lookup and field validations are based on EE. Validations are based on EE for purchase orders, receipts, returns	EE Cost Center Download (EAM) Note: EAM validations for valid values downloaded into EAM still occur for requisitions.
Ship-To	Lookup and field validations are based on EE Address Master.	Ship-To Download (EAM)
Bill-To	Lookup and field validations are based on EE Address Master.	Bill-To Download (EAM)
Currency	Lookup and field validations are based on EE Currencies.	Currency Download (EAM)
Domain / Entity	User access and validations are based on EE Domain and EE Entity.	Domains and Entities must be created in Domain (EAM) with the same codes used in EE.
Location	Lookup and field validations are based on EE locations.	EAM locations are migrated to EE Locations. Note: EAM customers can take advantage of “Automatic Locations” functionality where new locations are created at receipt if they do not already exist.
Tax Class	Tax class for EAM item will default from global item if available. Validations are based on EE for purchase orders, receipts, and returns.	Expected that EAM Tax Classes also exist in EE.

Table 1 EAM Data Synchronization Requirements (continued)

Data Source	Channel Islands Data Entry	EAM Synchronization
Unit of Measure	Unit of measure lookup and fields are based on EE. Validations are based on EE for requisitions, purchase orders, receipts, and returns. Unit of measure conversion uses base module service.	Expected that UOMs (EAM) and UOM Conversion (EAM) match the EE data. May require a manual reconciliation for EAM data to match EE data during implementation. Warning: If EAM data does not match EE data, the incorrect price may be defaulted to the purchase order line.
Buyer	Requisitions: Conditional Lookup <ul style="list-style-type: none"> • EAM flows have EAM Employees lookup and validate against EAM buyer site access. • EE flows have EE Buyer Maintenance lookup (userID) and validate against these values. Purchase Orders: EE Generalized Codes (po_buyer) <ul style="list-style-type: none"> • Validations based on EE Generalized codes. If no values exist for po_buyer, then no validation. If one or more values exist for po_buyer, then field is validated. 	EAM buyers exist in EE Generalized Codes for po_buyer. EE Site Security Maintenance can be used to limit site access to EAM buyers

Note Synchronization requirements will be reduced and eventually eliminated in future releases of the Asset Management app.

Conversion Log Review

When Asset Management is installed and enabled in an existing EAM user’s environment, a number of conversion utilities automatically run in the background. It is important to review the `yab.log` file for warnings and errors in the conversion process. You can review `yab.log` or `as-eam.server.log` files in the `build/logs` directory. You also can check the appserver setting in `ubroker.properties` file on the server.

While reviewing the log files for warnings, pay particular attention to Location Codes. EAM locations may already exist in EE, or the EAM codes may be too long for EE.

Release Notes for EAM 2017.1 Release

Enterprise Asset Management Version: 2017.1 (13.3)

Date: September 2017

QAD Enterprise Applications Versions: Enterprise Edition 2016 and 2017

Languages Supported: English, Latin American Spanish, Castilian Spanish, Czech, Polish, French, German, Brazilian Portuguese, Simplified Chinese, Korean, Bulgarian, Hungarian.

Upgrade Instructions

To upgrade to EAM 2017.1, see the upgrade instructions supplied with the release media.

For all other installation information, see the most recent edition of the *QAD Enterprise Asset Management Installation Guide*.

New Feature Summary

This section describes the new features and enhancements that are available in EAM 2017.1.

Update of Fixed Asset Book Details for Projects and Jobs

EAM now prompts for the costs for multiple asset books when capitalizing project or job costs. EAM defaults the books based on the class entered for the asset and defaults the costs for each book based on the New Capitalized Amount entered. The cost values can be updated for each book as appropriate before the Fixed Asset record is created. When modifying an asset, EAM displays the existing costs for each book associated with the asset concerned, and allows them to be updated with the appropriate new values before updating the asset in the Fixed Assets module in QAD ERP.

QAD Automation Solutions: Data Collection Transactions

EAM now supports QAD Automation Solutions: Data Collection transactions when Automation Solutions is part of a QAD Enterprise Applications suite. For information on installing the EAM-specific package, see the *QAD Automation Solutions: Data Collection Transaction Package Installation Guide*. For information on implementation, see the *QAD Automation Solutions: Data Collection User Guide*.

Time Zone Functionality

EAM has updated the function that calculates the current date and time for fields that receive a value of “today.” EAM implemented the QAD ERP functionality, which uses the UTC date and time, in conjunction with the EE domain’s time zone code and daylight savings time code, to determine the correct date and time. GL relevant fields such as GL References will not change.

For details on how to set up time zones, please see the “Setting Up Multiple Time Zones” and “Domain Time Zone” sections in the *QAD System Administration Guide*. EAM does not have time zones assigned in its own extension of the Domain master file and this functionality is defined in Enterprise Edition.

Stores Requisitions User-Defined Mail

System-generated mail for Stores Requisitions now includes the fields you select in the User Defined Mail Browse, making the messages more informative and helpful to users.

Revisions on Printed PO Documents

EAM now displays detailed information about revisions that were made to purchase orders when you print a PO from the Action menu. The printed document now includes Revision Number, Date, Time, and any comments that have been entered.

Upgrade Notes

Revisit Role Setup

When the upgrade is complete, review your existing roles to verify that they are set properly.

Customer-Reported Issues Resolved and Release Enhancements

The following customer-reported issues have been resolved in this release.

Fixes and Enhancements - EAM 2017.1

Table 1 Fixes and Enhancements for EAM 2017.1 (1 of 4)

Component	QAD Issue	Summary
Analysis	EAMNETS-2918	The Inventory Value as of Date report now displays the correct On Hand quantity when inventory is received from PO in one site and relocated to another site, and the report is run with the effective date defined as the received-on date. Previously, an incorrect On Hand quantity was displayed.
	EAMNETS-2960	Pick List (EAM) now displays stores requisition header information for each record when the report is run for multiple Work Orders. Previously, the stores requisition header was displayed for first record only.
Finance	EAMNETS-2559	The Purchase Orders Return To Vendor action now creates a Posted GL transaction for variance and no longer displays the error message “The posting is not balanced” when Auto Issue? is checked on a requisition line that has an inventory part and the inventory cost method is weighted average. Previously, an error message was displayed.
	EAMNETS-2748	The Projects Invoices subdetail menu now displays the correct Job No and Job No Desc when a sales order with a project is shipped using the Scheduled Pay SO subdetail menu SO Ship action and invoiced using 7.13.4 Invoice Post and Print. Previously, those two fields were blank.
	EAMNETS-2787	The Projects Invoices subdetail menu now displays the correct Invoice Amount and Paid Amount when a taxable sales order with a project is shipped using the Scheduled Pay SO subdetail menu SO Ship action and 7.9.15 Sales Order Shipments, invoiced using 7.13.4 Invoice Post and Print and paid using 27.6.4.1 Customer Payment Create. Previously, incorrect amounts were displayed.
	EAMNETS-2795	Posted GL Transactions (EAM) now displays the correct Year and Quarter when the Effective Date is modified. Previously, an incorrect Year and Quarter were displayed.
	EAMNETS-2812	Project Budget Approval no longer displays the error message “This user’s Proj Limit? is no. Cannot change Cons Limit? to yes.” when Proj Limit? is enabled in Users and Cons Limit? is changed to yes. Previously, the error message was displayed.
	EAMNETS-2864	The Projects Change Status action now displays the error message “Manual GL transactions are recorded against this project; it cannot be canceled.” when Status is changed to Canceled (X) and an unposted GL transaction was posted against the project. Previously, no error message was displayed.
	EAMNETS-2901	You can now delete a job in Projects Jobs when an amount is allocated on the job and “User Allocation” is changed to No on the project. Previously, an error message was displayed.
	EAMNETS-3033	Projects now displays the Orig Budget and New Budget in nnn,nnn,nnn.nn format when the Modify Budget action is selected. Previously, the budget settings were one numerical setting smaller than original estimate and requested funding, which led to errors.
Inventory	EAMNETS-2765	Inventory no longer validates Inventory Account Information when the sub-account check boxes for COA Mask, Cost Center COA Mask, and Project COA Mask on Domain in ERP are cleared. Previously, validations were checked.
	EAMNETS-2806	The Inventory Issue action now sends Mail notification to the Notify when On Hand is equal to the Reorder Point and “Notify At or Below” is set to Reorder Point. Also, the Inventory Issue action now sends Mail notification to the Notify when On Hand is equal to Safety Stock and “Notify At or Below” is set to Safety Stock.

Table 1 Fixes and Enhancements for EAM 2017.1 (2 of 4)

Component	QAD Issue	Summary
	EAMNETS-2848	The Messages Inbox now displays “equal or below” in the subject line and “to equal or below” in the body of the e-mail when an inventory part equals the reorder point or safety stock and an e-mail notification is received. Previously, only “below” was displayed.
Maintenance	EAMNETS-2783	The Projects Cost Analysis subdetail menu now displays the time in the correct format of HH:MM on the Labor tab when labor is posted on a project. Previously, the colon did not display.
	EAMNETS-2885	You can now update the Description field for Stores Requisition Approval Groups. Previously, the following error was displayed: Another user has changed this record after you opened it. You must click <UNDO> button and re-enter your data.
	EAMNETS-2922	The Work Orders (EAM) Print Document action is no longer an option in the Action menu when a new record is created and a role is not given for the respective site. Previously, the Print Document action was displayed.
	EAMNETS-2931	The Work Order Post Labor action now displays the time in the correct format of HH:MM. Previously, users had to manually enter the colon.
	EAMNETS-2958	The Equipment Readings subdetail menu now displays the correct usage when a user enters a separate record with a different Date Read but for the same reading with the same decimal value of Current Reading and the DUOM type of Meter. Previously, the usage was incorrect.
Other	EAMNETS-2769	The Cost tab in Projects no longer displays Text Not Found in blank fields. Previously, ‘Text Not Found’ was displayed. The Cost tab in Projects Jobs no longer displays Text Not Found in blank fields. Previously, ‘Text Not Found’ was displayed.
Purchasing	EAMNET-17506	Two new columns, Total Cost (B) Round and Total Cost Rounds, have been added to the Requisition Line browse. If the user does not see those two columns, please right click and add columns, and then set the default browse so that those two columns are automatically displayed.
	EAMNETS-2602	Requisitions now displays the Notify on the requisition line when a requisition is copied. Previously, the Notify was not displayed. The Requisitions Authorize action now sends e-mail to the Notify along with the originator when a requisition is authorized. Previously, the e-mail was only sent to the originator.
	EAMNETS-2696	Order Cost and Total Cost on Requisition Lines are now populated when globally created from a vendor-sourced, non-stock part Stores Requisition List, and that Vendor has a foreign currency associated with it.
	EAMNETS-2715	Purchase orders now correctly display the Total Cost on the PO header when a PO is created from a foreign currency requisition that has a canceled requisition line. Previously, the Total Cost was incorrect.
	EAMNETS-2735	The Purchase Orders Print Document action now displays the revisions from All PO/Req Revisions when revisions were created in PO and the Job Program ‘PO/Req Revision Rollup Create’ is run. Previously, the revisions were not displayed.
	EAMNETS-2753	Requisitions now correctly defaults Expense Account on Line from Sites Inventory Issue Defaults - Debit when a requisition line is created for an inventory part not having a Primary Expense Account. Previously, a blank Account was displayed.
	EAMNETS-2763	The Projects Cost Analysis subdetail menu Contract tab now displays the correct Req No and Historical Req No when the contractor cost is charged against the project. Previously, Req No displayed zero.

Table 1 Fixes and Enhancements for EAM 2017.1 (3 of 4)

Component	QAD Issue	Summary
	EAMNETS-2800	Inbox messages now display e-mails with the subject as “Authorization Request for Requisition &1 Site &2” and “Authorization Request for purchase order &1 Site &2” in the receiver's language when requisitions are routed for approval and the receiver has a different language. Previously, e-mail messages were displayed in the sender's language.
	EAMNETS-2826	Requisitions now displays the status as “Previously Authorized” when the vendor is changed on a requisition header that has a different currency. Previously, the requisition was not rerouted. Also, Requisitions now displays the correct Total Cost (B) when the vendor is changed on a requisition header. Previously, Total Cost was not changed. Requisitions now displays the currency on a requisition header when the vendor is modified to blank. Previously, Currency was blank.
	EAMNETS-2854	The Purchase Orders Receive action now correctly displays the error message “PO is in use by another user.” when the same Purchase Order is received in different sessions at the same time. Previously, no error message was displayed.
	EAMNETS-2861	The Requisitions Authorize action now correctly routes a requisition to a substitute user when the originator clicks the Add Quality button and the selected Quality approver is substituted. Previously, the requisition was not routed to the substitute user.
	EAMNETS-2875	The Purchase Orders (EAM) Standard Clause now allows users to Edit or Delete a record when the Standard clause length is more than 15 lines and ERP / Enforce Purchasing Field is set to yes in the Registry (EAM). Previously, the error message “Clause Text should not exceed 15 lines (76 characters per line)” was displayed.
	EAMNETS-2898	The Global Message log now displays the correct translations in German for alert messages. Previously, the translations were incorrect.
	EAMNETS-2907	The Inventory Issue action now validates the Account, Sub-Account, Cost Center and Department combination in the Inventory Accounts subdetail menu when inventory is issued. Previously, the Account, Sub-Account, Cost Center and Department were not validated.
	EAMNETS-2908	User-defined mail now contains Stores Requisition and its fields. Previously, Stores Requisition was not present.
	EAMNETS-2910	Unposted GL Transactions no longer post GL transactions when “Use Allocation” is checked on the project and the allocated amount on the job is less than the Unauthorized Purchases amount on the job and the amount in Unposted GL Transactions. Previously, GL Transactions posted.
	EAMNETS-2912	The Projects Invoices subdetail menu now displays the correct Project No Desc when a Sales Order with a project is shipped using the Scheduled Pay SO subdetail menu SO Ship action and invoiced using Invoice Post and Print (7.13.4). Previously, the Project No Desc was blank.
	EAMNETS-2916	Requisitions now correctly defaults the Expense Type when the Project Job has Exp Type set on Projects Jobs and a job is entered on the Requisition. Previously, the Expense Type was not defaulted.
	EAMNETS-2939	Requisitions now displays the correct exchange rate when Currency Code is entered with the keyboard. Previously, the incorrect exchange rate was displayed.
	EAMNETS-2949	Requisitions now correctly defaults the Expense Account Information from Sites Inventory tab Inventory Issue Defaults - Debit when the requisition is created using the Stock Replenishment Create Requests action and the primary account was not set up in the Inventory Accounts subdetail menu. Previously, incorrect account information was defaulted.
	EAMNETS-2979	Inbox messages now display in German when the current user's language is set to German and a PO is ordered, received, or closed. Previously, a message in English was displayed.

Table 1 Fixes and Enhancements for EAM 2017.1 (4 of 4)

Component	QAD Issue	Summary
	EAMNETS-2980	The Requisitions Authorize action Detail form no longer routes the requisition to Next Approver when the originator clicks the Close (X) button. Previously, the requisition was routed to the Next Approver.
	EAMNETS-2982	The Requisitions Authorize action now correctly routes requisitions to a new Quality approver when the originator clicks the Add Quality button and selects Quality approver. Previously, the requisition was not routed.
Reporting/Filtering	EAMNETS-2781	The Net Receipts by Vendor and Period report now displays transactions with the correct Cost Center when the report is run without filters. Previously, the incorrect Cost Centers were displayed.
	EAMNETS-2810	The Stores Requisition Lists Expense tab WO No lookup now displays open work orders from the current site. Previously, records from all sites were displayed.
	EAMNETS-2867	The Inventory Label Print action now correctly generates ZPL files with the proper format. Previously, the action was not working.
	EAMNETS-2872	The Labor Transactions by CC Report now displays the correct Skill Code when an Employee has a specific Skill Code. Previously, a blank Skill Code was displayed.
	EAMNETS-2934	The Labor Transactions by CC report now correctly displays the Labor transactions when Skill is used in the filter criteria. Previously, the error message “No data returned. Unable to preview report” was displayed.
System	EAMNET-17745	<p>EAM implemented the QAD ERP functionality for Domain time zones in order to be compatible with how Enterprise Edition handles dates and times.</p> <p>For details on how to set up time zones, please see the “Setting Up Multiple Time Zones” and “Domain Time Zone” sections in the QAD System Administration Guide. EAM does not have time zones assigned in its own extension of the Domain master file and this functionality is defined in Enterprise Edition.</p> <p>EAM looks into EE to find the time zone that is assigned there, and applies it, as well as all other related functionality, such as daylight savings start and end date/time.</p> <p>Upon conversion to EAM 2017.1, EAM will convert all records that exist in EAM tables that contain either a Site code or a Domain code to the date and time that belongs to this time zone, assuming that the existing data is in the appserver date and time. GL relevant fields such as GL References will not be changed.</p> <p>Once this data conversion occurs, an EAM Registry entry will be created with the entry “DomainTimeZoneConversion” and its Data Value will be set to yes. Once this entry exists, further attempts to convert dates and times to the Domain time zone will not yield any results.</p>
System Administration	EAMNETS-2869	Previously, there were two stores requisition menu option in roles menu, one in Maintenance Work Order Work Order Store Req List and the other in Inventory Stores Requisition list. The menu option in Roles Maintenance Work Orders Work Orders Stores Req lists has been removed.
	EAMNETS-2877	The Users Purge Mail action now correctly deletes EAM mails for the selected user from the Messages Inbox. Previously, the messages did not delete.
	EAMNETS-2954	Vendor Download now defaults Acct No, Sub Acct No and Cost Center from Supplier Accounts Maintenance Expensed Item Receipts Accounts when EAM is connected with EE and Vendor download is performed. Previously, incorrect accounts defaulted.

Release Notes for EAM 2017 Release

Enterprise Asset Management Version: 2017 (13.2)

Date: March 2017

QAD Enterprise Applications Versions: Enterprise Edition 2016

Languages Supported: English, Latin American Spanish, Castilian Spanish, Czech, Polish, French, German, Brazilian Portuguese, Simplified Chinese, Korean, Bulgarian, Hungarian.

Upgrade Instructions

To upgrade to EAM 2017, see the upgrade instructions supplied with the release media.

For all other installation information, see the most recent edition of the *QAD Enterprise Asset Management Installation Guide*.

New Feature Summary

This section describes the new features and enhancements that are available in EAM 2017.

Approval Limit Currency

When using approval groups for requisitions, purchase orders, blanket orders, and project budgets, you must define a single, system-wide currency for approval limit values. All approval limits are converted into the domain's base currency for authorization during routing. You can view the approval limit in both the approval limit currency and the base currency

The following fields were added on Routing submenus:

- Base Limit
- Base Currency
- Approval Limit
- Approval Limit Currency
- Exchange Rate
- Exchange Rate Date

Maintenance Manager Dashboard

The QAD EE .NET UI now includes one EAM dashboard that brings together six operational metrics within a single panel. The Maintenance Manager dashboard is accessible from the Dashboards | Published Dashboards folder and displays the following panels:

- EAM Work Order Backlog
- Service Requests
- EAM Maintenance Cost
- EAM Equipment Downtime
- Equipment Failures
- Preventive Maintenance Compliance

You can click on a panel to view its operational metric, and from there you can drill into the data used to create the graphics. The green, yellow, and red colors on the panels indicate good, fair, and poor performance.

Attachments Functionality

You can now attach documents directly to a record, with the attachment stored on the QAD server. This functionality works with:

- Equipments records
- Jobs
- Master instruction lists
- Part records
- PM templates
- Projects
- Purchase orders
- Quotes
- Requisitions
- Service requests
- Work orders

This functionality is in addition to EAM's External Links capability.

New Equipment Browse

EAM has a new All Readings browse in Maintenance | Equipment. The browse displays the current reading for all pieces of equipment that have readings defined in the Maintenance | Equipment | Equipment | Readings subdetail menu.

New PO/Requisition Lines Browse

EAM has a new All PO/Requisition Lines browse that displays all requisition lines with or without a PO number. This new browse replaces the former All PO Lines browse.

Primary Craft Included on Post Labor Action

The Post Labor action on the Work Order and Work Order Close browses now includes a Primary Craft field. This field is read-only and defaults from the Employee record after you enter an employee number to record labor.

Excel Export Option Enabled

You can now export data to Excel from the Revision subdetail menus for Equipment, Requisitions, and Work Orders when a record is selected in the browse.

New Grouping and Sorting Options for Inventory Value Report

The Inventory Value As of Date report now displays the Asset Acct No and Asset Cost Center in Sort By and Group By criteria when a report is run. This allows you to generate a summary of the total cost by asset cost center and create more robust reports for auditors.

Upgrade Notes

Revisit Role Setup

New options have been added to the security roles. When the upgrade is complete, review your existing roles to verify that they are set properly. The following new roles are available.

Role Changes – Purchasing

- Purchasing | Purchase Orders | Purchase Orders | Attachments
- Purchasing | Purchase Orders | Purchase Order Line | Attachments
- Purchasing | Requisitions | Requisition | Attachments
- Purchasing | Requisitions | Requisition Line | Attachments
- Purchasing | All PO/Requisition Lines

Role Changes – Finance

- Finance | Projects | Projects | Attachments
- Finance | Projects | Jobs | Attachments

Role Changes – Maintenance

- Maintenance | Equipment | All Readings

Customer-Reported Issues Resolved and Release Enhancements

The following customer-reported issues have been resolved in this release.

Fixes and Enhancements - EAM 2017

Table 2 Fixes and Enhancements for EAM 2017 (1 of 9)

Component	QAD Issue	Summary
Action Center	EAMNET-17209	KPIs proposed for the Action Center need to have EAM browses created in the QAD .NET UI. Supports Current WO Backlog, PM Compliance, and Maintenance Costs KPIs. Define the EAM Work Order browse in EE.
	EAMNET-17211	KPIs proposed for the Action Center need to have EAM browses created in the QAD .NET UI. Supports Equipment Availability, Equipment Down KPIs. Define EAM Downtime browse in EE.
	EAMNET-17212	KPIs proposed for the Action Center need to have EAM browses created in the QAD .NET UI. Supports Equipment Availability KPI. Define Failures WO detail browse for WO Count
	EAMNET-17213	KPIs proposed for the Action Center need to have EAM browses created in the QAD .NET UI. Supports Labor Backlog and Maintenance Cost KPIs. Define EAM Labor History browse in EE.
	EAMNET-17215	KPIs proposed for the Action Center need to have EAM browses created in the QAD .NET UI. Supports Maintenance Cost KPIs. Define EAM Maintenance Cost browse in EE.(this would be the Maintenance Cost browse filtered only to contractor = no). Define EAM Contractor Cost browse in EE (this would be the Maintenance Cost browse filtered only to contractor = yes).
	EAMNET-17323	KPIs proposed for the Action Center need to have EAM browses created in the QAD .NET UI. Supports Service Request without Work Order KPI. Define EAM Service Request browse in EE.
	EAMNET-17343	KPIs proposed for the Action Center need to have EAM browses created in the QAD .NET UI. Supports Current WO Backlog, PM Compliance and Maintenance Costs KPIs. Define the EAM Work Order browse in EE.
Analysis	EAMNETS-2292	Inventory Value at Date Report now displays the correct On Hand quantity when the report is run with Effective Date is Yesterday. Previously, in the above scenario, the report was displaying an incorrect On Hand quantity.
Browse	EAMNETS-2200	Filter Manage Filters on EAM browses now saves the existing filter when filter criteria are modified for the existing filter. Previously, changes to the existing filter were not saved.
	EAMNETS-2219	Work Orders now display the correct format for the Job Description field when Job No and Job Description columns are added on a WO. Previously, an incorrect format was displayed.
	EAMNETS-2367	The Equipment Revision subdetail menu now displays an Excel Export option when an equipment record is selected. Previously, the Excel Export option was disabled.

Table 2 Fixes and Enhancements for EAM 2017 (2 of 9)

Component	QAD Issue	Summary
Client UI	EAMNETS-2189	The Excel Export button is now enabled on the Requisition Lines subdetail menu, reached from Projects Jobs submenu. Previously, the Excel Export button was disabled.
	EAMNETS-2255	The Excel Export button is now enabled on the Projects Job Summary subdetail menu when the Job Summary submenu is opened from the Projects menu. Previously, Excel Export was disabled.
	EAMNETS-2298	The Employees browse now displays the Buyer field as checked when Buyer Site is created in the Buyer Site subdetail menu. Previously, Buyer was not checked.
	EAMNETS-2338	QAD Enterprise Applications now displays the Enterprise Asset Management menu tree in the .NET UI if a user enters an incorrect password and then enters the correct password. Previously, the Enterprise Asset Management menu tree was not displayed if a user incorrectly entered a password and then correctly entered the password.
Data Entry	EAMNETS-2345	The Projects Business Segment lookup now displays Business Segments in the correct format when Projects/Business Segments/Format/Length fields in the registry are set. Previously, the Business Segment lookup displayed the wrong format.
	EAMNETS-2350	The Work Order Close Detail tab now defaults the Lost Oppor Rate of Downtime from equipment when the equipment is entered in a work order. Previously, 0.0000 Rate was displayed.
Finance	EAMNETS-2180	Posted GL Transactions display the correct GL Amount when a rotatable part is issued using stores requisition lists. Previously, the GL Amount displayed 0.
	EAMNETS-2235	The Projects Authorize action now displays the current user as Next Approver when a quality approver is skipped and authorization is kept on Hold Up. Previously, the quality approver was displayed. The Projects Authorize action now authorizes a project when a quality approver approves a project that has already been approved by a money approver. Previously, the project remained in routing with the next money approver and the project was not authorized.
	EAMNETS-2302	The GL amount and transaction currency amount on posted GL transactions now round correctly when a foreign currency PO is received with Auto Issue = Yes in a domain where base currency needs to be rounded to 0 decimals. Previously, an incorrect GL amount and transaction currency amount were displayed. The Inventory Transaction History now displays the correctly rounded Total Cost for an auto-issue transaction when an auto-issue PO line is received in a domain where base currency needs to be rounded to 0 decimals. Previously, an incorrect total cost was displayed.
	EAMNETS-2313	The Projects Cost tab now displays the proper translation of Warning Limit as Alerta de limite when User Language is 2058 (Spanish - Mexico). Previously, Warning limit was displayed.
	EAMNETS-2389	Users can now reverse labor using the Projects Reverse Labor action when the employee number of the current user matches the employee number on the labor record and Other Labor? is disabled on Users. Previously, labor could not be reversed.
	EAMNETS-2490	The Projects General tab no longer displays incorrect Primary Expense information when an account with Project Analysis set to false in ERP is entered as primary in the Project Expense Accounts subdetail menu. Previously, incorrect Primary Expense information was displayed.
Integration	EAMNETS-2319	You can now enter the same email address for multiple users in Users (EAM) when Email Address Login is set to No for the users sharing the email address. Previously, the system displayed the message "The email address you have entered is already used. Please use a different one."

Table 2 Fixes and Enhancements for EAM 2017 (3 of 9)

Component	QAD Issue	Summary
Inventory	EAMNETS-2141	Inventory Transaction History now populates the correct quantity in the Current Quantity field when a transaction is created for Issue and Adjust Inventory. Previously, the current quantity displayed 0.
	EAMNETS-2229	Users can now issue inventory with the Issue action from Stores Requisition Lists when Reserved is checked and Available is less than the issue quantity. Previously, the Issue action on Stores Requisition Lists was disabled.
	EAMNETS-2279	You can now select a commodity code on Inventory when Buyer is modified on Buyer Commodity Code without pressing Enter. Previously, the system displayed the error "Buyer is mandatory."
	EAMNETS-2284	The Inventory Relocate action now prints the Inventory-Site Transfer document when inventory is relocated from one site to another site. Previously, the document did not display.
	EAMNETS-2331	The Inventory Stock Detail tab now displays the correct On Order amount when the Update Planned/On Order job program is run and a partial PO receipt was done on an inventory part that has different Issue UOM and Order UOM values. Previously, the job program incorrectly calculated the On Order value of the part.
	EAMNETS-2484	Inventory now displays the correct cost in the Cost tab when a rotatable part is issued from Inventory. Previously, an incorrect cost was displayed.
Maintenance	EAMNETS-2151	The PM Templates Copy to Equipment action now copies the Notify from the selected PM Template and overrides the selected Equipment's Notify. Previously, the Notify from Equipment was copied.
	EAMNETS-2161	The Equipment Readings subdetail menu now displays the correct readings for a piece of equipment that both is mapped to a work center and has a tool code defined, after having been previously mapped to the same work center without a tool code, and had transactions such as BACKFLSH, LABOR, and WO-BKFL created in ERP. Previously, readings in Equipment mapped to Work Center without Tool Code, despite being mapped to a Work Center with a Tool Code.
	EAMNETS-2163	You can now close a WO with the Work Orders Change Status action when a canceled stores requisition is linked to a WO and the Auto Close Stores field is enabled on Sites. Previously, the following error message was displayed, "Stores Requisition has been canceled, update not allowed."
	EAMNETS-2176	You can now modify downtime on Work Order Close when Down is selected as the Method. Previously, downtime modification was not allowed.
	EAMNETS-2203	The Work Orders Change Status action now sends an email notification that contains the correct fields when fields are defined in the User Defined Email for Work Orders. Previously, the email notification did not display WO fields that had been defined for the email.
	EAMNETS-2222	Work Order Labor Summary Reports now contain a Date field in Filter Criteria. Previously, the Date field was not available.
	EAMNETS-2230	EAM now correctly displays records when sort criteria are selected for WOs, but you can no longer sort WOs by Work Performed or Precautions. Previously, you could select Work Performed and Precautions but no data was returned.
	EAMNETS-2233	The Projects Authorize action now displays the correct error message "Routing for Project <Project No> is on hold. Continue?" when Project routing approval is in Hold up status for the current user. Previously, the error message "Routing for requisition <?> is on hold. Continue?" was displayed.
	EAMNETS-2252	The Work Orders Global Print Document action now displays instruction list steps in the correct order when multiple steps are entered. Previously, steps were displayed in the incorrect order.
	EAMNETS-2261	The Equipment Failure Analysis subdetail menu now displays the correct WO Count, Avg Down, and dwn_cnt when the Equipment Failure Analysis job program is run after a failure code is modified on a WO. Previously, the WO Count, Avg Down and dwn_cnt were displayed incorrectly.

Table 2 Fixes and Enhancements for EAM 2017 (4 of 9)

Component	QAD Issue	Summary
	EAMNETS-2341	The PM Templates Issue action no longer shows the warning message “You are issuing PM during a skip period,” when the PM template’s issue date is Today and today’s date is not in a skip period. Previously, a warning message was displayed.
	EAMNETS-2352	Work Order Close Downtime no longer allows an incorrect entry in the Reason field. Previously, it allowed incorrect entry.
	EAMNETS-2376	Mandatory Fields now contains a Part Rebuild Locations module with Acct No, Cost Center, Dept and Sub Acct No as available mandatory fields. Previously, you were told that the module did not exist and you could not make those fields mandatory.
	EAMNETS-2416	Service Requests now send mail with the correct Subject, Requestor is listed as Originator, and Equipment displays the entire Equipment Description. Previously, incomplete information was displayed in Subject, Req was displayed as <?>, and incomplete equipment information was displayed if the description was delimited.
	EAMNETS-2420	The Open EAM WOs report now correctly displays all employees listed on the Work Orders Assigned subdetail menu. Previously, only the primary Assigned employed was displayed.
	EAMNETS-2434	You no longer receive an error on the Equipment Detail tab when the Project field on the Equipment Asset tab is populated. Previously, account numbers were validating against the project when the project field was populated and displaying the error, “You cannot use a project code with GL Account.”
	EAMNETS-2473	You can now edit the Requisitions Notes field when a requisition's status is Closed (C) or Canceled (X). Previously, edit was not allowed.
	EAMNETS-2474	You can now enter a closed job number on an equipment record without receiving an error. Previously, the job was validated for status when added to an equipment record and displayed an error message if the job was closed.
	EAMNETS-2475	PM Templates now display the correct PM Issue By value when the Current Reading is added or modified on the Equipment Readings subdetail menu. Previously, the incorrect date was displayed.
	EAMNETS-2479	There is now a Pri Craft field on Work Orders Post Labor action and it is read only. It defaults from Employee when the employee number is entered. Previously, the Pri Craft field did not exist.
	EAMNETS-2482	The Work Orders Post Labor action now displays the error message, “Invalid time Format” if a user enters a question mark (?) in the Time field. Previously, no error was displayed.
	EAMNETS-2487	The Work Order Close Detail tab now displays correct label translations when the user’s language is Italian (1040). Previously, labels were displayed in English.
	EAMNETS-2512	You can now make the Finish action mandatory in the Work Order module of Mandatory Fields. Previously, the Finish action was not an option.
	EAMNETS-2526	The PM Templates Copy to Equipment action now displays the message, “Should all future PMs be the last day of the month?” with a Yes or No option. It then creates a PM template for the selected equipment when the selected PM template has the following: <ul style="list-style-type: none"> • Last Day of Month = No • Issue Cycle = Month • PM Complete By > the 27th of the month Previously, no PM template was created.

Table 2 Fixes and Enhancements for EAM 2017 (5 of 9)

Component	QAD Issue	Summary
	EAMNETS-2531	The Equipment Readings subdetail menu now displays the correct readings for a piece of equipment that is both mapped to a work center and has a tool code defined, after having been previously mapped to the same work center without a tool code and having had transactions such as BACKFLSH, LABOR, and WO-BKFL created in ERP while Rollup Options were left blank on the Sites MFG/PRO Options tab. Previously, readings in Equipment mapped to Work Center with Tool Code were not created.
	EAMNETS-2580	The Equipment Parent/Child List (EAM) Report now displays an equipment record when you enter the child equipment in the Equip No filter criteria. Previously, no record was displayed.
Other	EAMNETS-2209	You can now delete a record in Clearances (EAM) when the delete button is clicked. Previously, the message "Clearance" was displayed.
Purchasing	EAMNET-17175	(Requisition, Expense) Approval Limits during routing are converted to the Domain Base currency of the Req, PO, BO, Project in routing if the base currency is different from the default Approval Limits currency for approvers. The exchange rate for the date the approver takes action is used to convert the system approval limit currency to the domain base currency of the Req, PO, BO, Project if the base currency different from the default Approval Limits currency for approvers. Validations for the approval limit look at the converted approval limit from the domain base currency equivalent. Validation for limit messages apply as usual when the Req, PO, BO, Project. The system approval limit currency and Domain base currency and exchange rate used and converted limit used are stored with the approval by the user.
	EAMNET-17306	EAM now verifies, before creating any new transaction numbers based on the System Sequence and Site Sequence, if the transaction number that is to be created does not currently exist in a transaction entered in EAM. If it does, a new Sequence reset function runs, where all the sequences for Site and System Control are set to the latest transaction on file. This avoids system errors in scenarios where other systems, including Channel Islands modules, create transactions in EAM including the Requisition and Purchasing modules, and do so after EAM has been temporarily disabled, effectively setting the transaction numbers in EAM and Channel Islands out of sync. This sequence reset avoids problems when EAM is re-enabled, and also in the future when any similar situations arise that involve any EAM Sequences.
	EAMNET-17335	You can now clearly see base limit and approval limit in their respective currencies.
	EAMNETS-2153	5.7 Purchase Order Maintenance (popomt.p) now defaults "Daybook Set" from 2.3.1 Supplier Data Maintenance (advnmt.p) when "Use Daybook Set By Site" is selected on 36.9.5 Purchasing Accounting Control (fipopopm.p). Previously, the wrong Daybook Set was displayed.
	EAMNETS-2183	The Purchase Order Order action now sends the full PO text to ERP when more than 15 lines are entered in the PO Text of Requisition Lines. Previously, only 15 lines were sent.
	EAMNETS-2223	The requisition header now displays the default description from Stores Requisition when a requisition is created with the Store Requisition List Create Requisition action. Previously, a blank Description was displayed.
	EAMNETS-2224	The All PO/Requisition Lines (EAM) browse now displays all requisition lines with or without a PO No and the All PO Lines (EAM) browse is no longer available. Previously, the All PO Lines (EAM) browse with only PO lines was displayed.

Table 2 Fixes and Enhancements for EAM 2017 (6 of 9)

Component	QAD Issue	Summary
	EAMNETS-2226	The Stores Requisition Lists (EAM) Create Requisition action now displays Tax Code, Tax Usage, and Tax Class from Vendor when vendor is taxable and Calculate Tax is enabled on Sites. Previously, no tax information was displayed.
	EAMNETS-2239	The Purchase Orders (EAM) browse now shows the correct label “fecha de caducidad” for “Expiration Date” when the Language Code is assigned as 2058 for the current user. Previously, the wrong label “Fecha de vencimiento” was displayed.
	EAMNETS-2262	You can now add the Auth Status, Auth?, and Auth By fields to the filter criteria of the Stores Requisitions Lists browse when you create a new filter or modify an existing filter. Previously, you could not filter by Auth Status, Auth? or Auth By.
	EAMNETS-2277	The Purchase Orders Receive action no longer allows you to receive a quantity greater than the Qty Ordered and Receive Limit % as defined on Domain when a PO is reopened and Receipt Limit is enabled in Domain. Previously, the system allowed you to over receive.
	EAMNETS-2282	The Requisitions browse now correctly saves the requisition header multiple times when the default sort column on the Requisitions browse is changed to a different data type column and a search value is entered in “Find.” Previously, in the above scenario, the following Progress error was displayed: “error getting a page of results. <FindString> must be a quoted constant or an unabbreviated, unambiguous buffer/field reference for buffer known to query. (7328).”
	EAMNETS-2324	The Requisitions browse now displays the correct Requestor default from Stores Requisition Lists when a requisition is created using Stores Requisition Lists Line Create Requisition action. Previously, the current user’s Emp No was displayed.
	EAMNETS-2355	Requisitions now correctly displays “Date Required” as “Forderungsdatum” on Requisition Header and Line when User Language is 1031 (German-Germany). Previously, “Forderungsdatun” was displayed.
	EAMNETS-2363	Receiver Matching Create (EE) now displays the correct Project Code when a PO is created and the Incl Proj on Rec field is set to Debit in the Detail tab of Domain (EAM). Previously, a blank Project Code was displayed.
	EAMNETS-2371	GL Transactions View Extended (ERP) now displays vendor number on the Third Party field when a purchase order is received from EAM and posted to ERP. Previously, the Third Party field was blank.
	EAMNETS-2379	Requisitions now displays the error message “Description must be 80 characters or less” when text entered in the Description field of a Requisition Header is greater than 80 characters. Previously, no error message was displayed.
	EAMNETS-2398	Purchase Orders Receive now displays the message “poc_ctrl is locked by &1 on &2. Please try again later.” when the Purchasing Control menu is locked. Previously, EAM would freeze until Purchasing Control was released.
	EAMNETS-2430	The Requisitions Expense tab now enables the Project No and Job No fields when Equip No is entered. The tab also enables the Equip No field when Project No is added. Previously, Project No and Job No were disabled when Equip No was added and Equip No was disabled when Project No was added.
	EAMNETS-2442	The Requisitions Authorize action now displays the error message “Not all requisition line mandatory fields are filled. Authorization not allowed.” when a Requisition Line with a blank mandatory field on Save is created using copy. Previously, mandatory fields on save were not checked.
	EAMNETS-2470	The action on the Requisitions Actions menu now correctly displays Reopen Cancelled Requisition as “Erneute Aktivierung einer stornierten Anforderung” when user language is 1031 (Germany-German). Previously, Reopen Cancelled Requisition was displayed.
	EAMNETS-2472	All EAM browses now show the correct active record as highlighted when a column header is clicked to change the sort. Previously, the wrong record was activated.

Table 2 Fixes and Enhancements for EAM 2017 (7 of 9)

Component	QAD Issue	Summary
	EAMNETS-2486	EAM Mail (Messages - Inbox) now displays the correct Requisition No in the email subject line when a Requisition Header or Line is canceled. Previously, Historical Req No was displayed.
	EAMNETS-2488	Requisitions now displays the correct Expense Site on the Expense tab when Source Site is changed for a stock part and Auto Issue? is checked on Requisition line. Previously, an incorrect Expense Site was displayed.
	EAMNETS-2503	The Purchase Orders Global Authorize action no longer displays in the Action menu when the PO Auth? flag is disabled in Sites Authorization Options tab. Previously, the action was visible.
	EAMNETS-2505	Vendor (EAM) now shows the correct Pri Contact, Email, Phone No, and Fax No when Vendor is downloaded in one domain using the Vendor (EAM) Download Vendor action and same Vendor already exists with different Pri Contact information in another domain. Previously, the wrong primary contact information was copied.
	EAMNETS-2508	Requisitions now displays the Job No on the header in the correct format when a project number is entered on the requisition header and a job number is selected in the lookup. Previously, the format was incorrect.
	EAMNETS-2518	EAM Mail (Messages - Inbox) now contains a link to the Blanket Orders menu on BO No and at the end of the message when an authorization request was received. Previously, no link was displayed.
	EAMNETS-2522	Requisitions now displays the Notify on the header as the Originator of a Stock Replenishment when a requisition is created using Stock Replenishment or the job program Stock Replenishment. Previously, Notify was left blank.
	EAMNETS-2573	The Purchase Orders PO Order action no longer displays the error message “Job No &1 of Project &2 at &3 has reached its spending limit” when the committed amount of a parent job is less than the allocated amount and the parent job has available spending limit. Previously, the error message was displayed.
	EAMNETS-2579	Unmatched PO Receipts as of Date (EE) no longer displays Accrued Tax when Accrue Tax? is selected and Accrual GLs? is not selected in Tax Rates (EAM). Previously, Accrued Tax was displayed.
Reporting/Filtering	EAMNETS-2387	Requisitions now displays “is me” and “is not me” filter options when Next Approver is selected in filter criteria. Previously, those two options were not displayed.
Reports	EAMNETS-2399	The Inventory Value as of Date report now displays the Asset Acct Number and Asset Cost Center in Sort By and Group By criteria when a report is run. Previously, no fields were displayed.
	EAMNETS-2462	The Monthly Labor Hours Forecast by Class Report now displays data when the attached PM Template has a DUOM Cycle that is less than half the Current Reading in the Issue Method tab for a piece of equipment. Previously, the report was not displayed and the application hung.
	EAMNETS-2524	Purchase Order Print now prints the correct tax when a requisition line status is changed to Closed (C) or Cancelled (X). Previously, incorrect tax was printed.
	EAMNETS-2536	Analysis reports now display the correct report template when a custom report is defined in Report Xref. Previously, a default report template was displayed.
	EAMNETS-2540	The Work Orders Global Print Document action now displays the correct template format when work orders have attachments and a custom template format is assigned for a work order document in Report Xref browse. Previously, an incorrect template format was displayed.
System	EAMNET-17389	German translations were corrected.
	EAMNETS-2288	The EAM Appserver log no longer displays irrelevant logs when the logging level is set to 1. Previously, a large amount of data was written to the logs related to Query, KeyFieldList, PrimaryQStr, DataSourceFile and FieldMap.

Table 2 Fixes and Enhancements for EAM 2017 (8 of 9)

Component	QAD Issue	Summary
System Management	EAMNET-16482	<p>You can now define a single Approval Limit Currency in the system that applies to all users for Req Exp, Req Capital, Req Proj, Req Over Budget, PO, BO, and Project approval limits.</p> <p>If Site Authorizations are specified for PO, Requisition, Blanket Order, or Project, the Approval Limit Currency must be defined before the setting can be selected.</p> <p>This Approval Limit currency is then used to translate the approver's limit based on the domain base currency for the Requisition, PO, BO or Project.</p>
	EAMNET-17261	<p>(Requisition Capital) Approval Limits during routing are converted to Domain Base Currency of the Req, PO, BO, or Project in routing if the base currency is different than the system Approval Limits Currency for approvers.</p> <p>The exchange rate for the date the approver takes action is used to convert the system approval limit currency to the domain base currency of the Req, PO, BO, or Project if the currency is different from the default Approval Limits currency for approvers.</p> <p>Validations for the approval limit look at the converted approval limit from the domain base currency equivalent.</p> <p>Validation for limit messages apply as usual for the Req, PO, BO, or Project.</p> <p>The system approval limit currency, Domain base currency, exchange rate used, and converted limit used are stored with the approval by the user.</p>
	EAMNET-17262	<p>(Requisition Project) Approval Limits during routing are converted to Domain Base Currency of the Req, PO, BO, or Project in routing if the base currency is different than the system Approval Limits Currency for approvers.</p> <p>The exchange rate for the date the approver takes action is used to convert the system approval limit currency to the domain base currency of the Req, PO, BO, or Project if the currency is different from the default Approval Limits currency for approvers.</p> <p>Validations for the approval limit look at the converted approval limit from the domain base currency equivalent.</p> <p>Validation for limit messages apply as usual for the Req, PO, BO, or Project.</p> <p>The system approval limit currency, Domain base currency, exchange rate used, and converted limit used are stored with the approval by the user.</p>
	EAMNET-17263	<p>(PO Approval Limit) Approval Limits during routing are converted to Domain Base Currency of the Req, PO, BO, or Project in routing if the base currency is different than the system Approval Limits Currency for approvers.</p> <p>The exchange rate for the date the approver takes action is used to convert the system approval limit currency to the domain base currency of the Req, PO, BO, or Project if the currency is different from the default Approval Limits currency for approvers.</p> <p>Validations for the approval limit look at the converted approval limit from the domain base currency equivalent.</p> <p>Validation for limit messages apply as usual for the Req, PO, BO, or Project.</p> <p>The system approval limit currency, Domain base currency, exchange rate used, and converted limit used are stored with the approval by the user.</p>

Table 2 Fixes and Enhancements for EAM 2017 (9 of 9)

Component	QAD Issue	Summary
	EAMNET-17264	<p>(Projects) Approval Limits during routing are converted to Domain Base Currency of the Req, PO, BO, or Project in routing if the base currency is different than the system Approval Limits Currency for approvers.</p> <p>The exchange rate for the date the approver takes action is used to convert the system approval limit currency to the domain base currency of the Req, PO, BO, or Project if the currency is different from the default Approval Limits currency for approvers.</p> <p>Validations for the approval limit look at the converted approval limit from the domain base currency equivalent.</p> <p>Validation for limit messages apply as usual for the Req, PO, BO, or Project.</p> <p>The system approval limit currency, Domain base currency, exchange rate used, and converted limit used are stored with the approval by the user.</p>
	EAMNET-17265	<p>(Blanket Orders) Approval Limits during routing are converted to Domain Base Currency of the Req, PO, BO, or Project in routing if the base currency is different than the system Approval Limits Currency for approvers.</p> <p>The exchange rate for the date the approver takes action is used to convert the system approval limit currency to the domain base currency of the Req, PO, BO, or Project if the currency is different from the default Approval Limits currency for approvers.</p> <p>Validations for the approval limit look at the converted approval limit from the domain base currency equivalent.</p> <p>Validation for limit messages apply as usual for the Req, PO, BO, or Project.</p> <p>The system approval limit currency, Domain base currency, exchange rate used, and converted limit used are stored with the approval by the user.</p>
	EAMNET-17266	<p>(Requisition Over Budget) Approval Limits during routing are converted to Domain Base Currency of the Req, PO, BO, or Project in routing if the base currency is different than the system Approval Limits Currency for approvers.</p> <p>The exchange rate for the date the approver takes action is used to convert the system approval limit currency to the domain base currency of the Req, PO, BO, or Project if the currency is different from the default Approval Limits currency for approvers.</p> <p>Validations for the approval limit look at the converted approval limit from the domain base currency equivalent.</p> <p>Validation for limit messages apply as usual for the Req, PO, BO, or Project.</p> <p>The system approval limit currency, Domain base currency, exchange rate used, and converted limit used are stored with the approval by the user.</p>
	EAMNETS-2227	<p>You can now make the Labor Emp No field mandatory for the Finish and Close actions for the Work Order Close browse. Previously, the Work Order Close module in Mandatory Fields did not include Labor Emp No.</p>
	EAMNETS-2318	<p>The Equipment Readings subdetail menu now displays correct values in Usage when transactions such as BACKFLSH, LABOR and WO-BKFL were created with decimal values in ERP for Work Center mapped with Equipment and the DUOM Load job program was run. Previously, decimal places of Usage were truncated.</p>

Release Notes for the EAM 2016.1 Release

Enterprise Asset Management Version: 2016.1 (13.1)

Date: September 2016

QAD Enterprise Applications Versions: Enterprise Edition 2016

Languages Supported: English, Latin American Spanish, Castilian Spanish, Czech, Polish, French, German, Brazilian Portuguese, Simplified Chinese, Korean, Bulgarian, Hungarian.

Upgrade Instructions

To upgrade to EAM 2016.1, see the upgrade instructions supplied with the release media.

For all other installation information, see the most recent edition of the *QAD Enterprise Asset Management Installation Guide*.

New Feature Summary

This section describes the new features and enhancements that are available in EAM 2016.1. You can view a video demonstration of these features and enhancements by clicking the following link. The link will take you directly to the video.

[EAM 2016.1 Functional Detail Demonstration.mp4](#)

Tool Management

A new module, Tools, has been added to Maintenance that allows you to track movement of tools, manage certifications, schedule maintenance on tools using PM templates, issue tools to rebuild, and ensure that only certified tools are used.

Copy Equipment Records to New Equipment

The copy button on the Equipment browse copies data from a selected piece of equipment and uses those details to create a template for a new piece of equipment. The following information is copied:

- PM templates
- BOM content
- DUOM
- DUOM type
- Lower and upper tolerance limits

New Option for Recording Equipment Downtime

You can now enter equipment downtime as hours and minutes directly into the equipment record. The Create Down Time detail tab has a new Method drop-down menu that allows you to choose either Start/End or Down. The Down option makes the Start Date and Down Time fields active. You can enter the equipment's actual downtime and EAM calculates the Start Date backward from an End Date of today.

The Start/End option maintains the historical method of entering downtime by automatically calculating the Down Time field based on the information you enter in the Start and End date and time fields.

Copy PM Templates Across Sites

You can now copy a PM template across multiple sites.

All Failures Browse

The All Failures browse, located in the Maintenance module, displays all failure codes defined in your EAM system and the work orders on which those failure codes appear. The upper browse has the following columns:

- Failures
- Description
- WO Count
- Percentage of Total WO
- Mean Time Between Failure

The lower browse displays the CM WOs linked with the failure highlighted in the upper browse.

Purchase Order Print Options

You can now include user- or customer-generated comments that are contained in a PO's revision history when you print a PO. A User Comment option determines if those comments appear on the printed document.

Automatic Calculation of Estimated Hours of Labor

EAM populates and updates the estimated hours of labor required for both WOs and PM templates by rolling up the estimated hours entered on all instruction list steps attached to the WO or PM.

Update Currency Exchange Rate on PO Receipt

You can now update the defined currency exchange rate when you receive a PO. EAM has a new check box, Update Receipt/Return Ex Rates, on the Domain|PO/Reqs tab. When this check box is selected and the PO vendor and buyer currencies are different, you can change the exchange rate for POs as you receive them using the Exchange Rates pop-up window.

New Label Names

Two label names have been updated to better reflect their functions in EAM.

- Next Issue Date is now PM Complete By
- PM Due is now PM Issue By

Custom Report Conversion

EAM 2016.1 contains a new reporting framework that requires you to convert your customized report templates after the upgrade is complete. Knowledgebase article AB-04621 links to the required conversion utilities.

Requirements

- A working, upgraded EAM 2016.1 environment

- EAM’s Progress Editor [Enterprise Asset Management | System Administration | Progress Editor (EAM)]
- Telnet or SSH access to the database server and the ability to create folders on the file system
- The utilities required for the report conversion, downloaded from QAD at <https://knowledgebase.qad.com/kmp/article/AB-04621>.

Conversion

- 1 Make a list of all report templates that have been modified, including the template overlays that may contain your organization’s logo.
- 2 Back up the `dataacc` database.
- 3 Create temporary folders on the server.
 - a Using a telnet or SSH client, log in to the database server.
 - b Create a temporary folder to hold the exported data; for example, `/tmp/eam`.
 - c Create a subfolder for exported data; for example, `/tmp/eam/ExportedBlobs`.
 - d Create a subfolder for converted data; for example, `/tmp/eam/ConvertedBlobs`.

Fig. 1
Create Temporary Folders

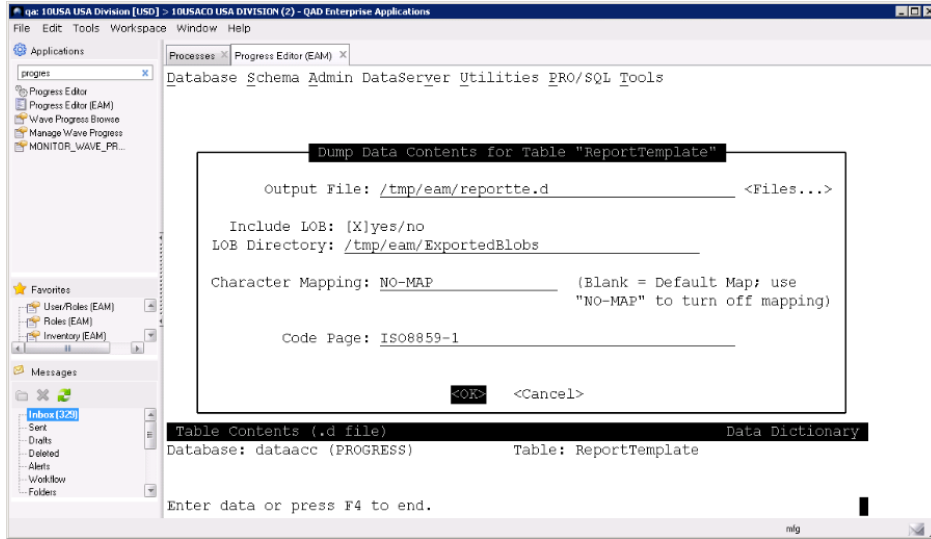
```

coli02.qad.com - PuTTY
coli02.qad.com: /tmp $ mkdir eam
coli02.qad.com: /tmp $ cd eam
coli02.qad.com: /tmp/eam $ mkdir ExportedBlobs
coli02.qad.com: /tmp/eam $ mkdir ConvertedBlobs
coli02.qad.com: /tmp/eam $ ls
ConvertedBlobs  ExportedBlobs
coli02.qad.com: /tmp/eam $ █
  
```

Note Do not exit the telnet or SSH client.

- 4 In the QAD .NET UI, open Progress Editor (EAM) and export EAM’s report template data.
 - a Access Tools | Data Dictionary.
 - b Access Database | Select Working Database and select `dataacc`.
 - c Access Admin | Dump Data and Definitions | Table Contents (.d file) and select the ReportTemplate table.
 - d Verify there is a `>` next to the ReportTemplate table name, then tab to `<OK>` and press Enter.

Fig. 2
Dump Data Contents



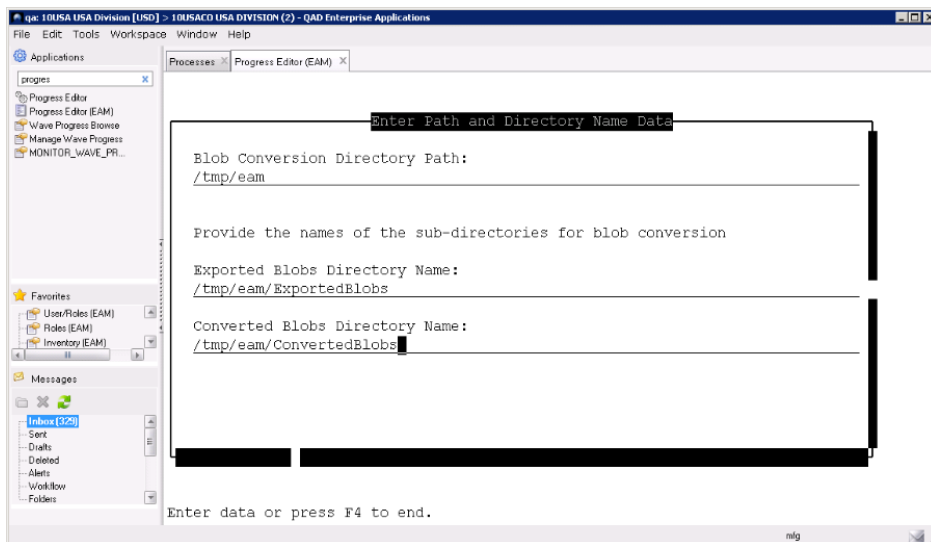
- e When the dump is complete, press the space bar to continue. Then select Database | Exit.

Note Do not close the Progress Editor.

5 Run the conversion script.

- a In the Progress Editor, select File | Open and open the BlobConversion.p program that you downloaded from QAD.
- b Select Compile | Run.
- c Enter the temporary folders you created in step 3 on page 25.

Fig. 3
Enter Temporary Folders



- d Press F1 to start the conversion process.
- e When the process completes, select File | Close.

Note Do not close the Progress Editor.

6 Review the BlobConversion.log file.

- a Using the telnet or SSH client, search the file system for BlobConversion.log.
- b Review BlobConversion.log for errors. Search for “namespace that isn’t handled.” If you find errors, do not continue and contact QAD Support or R&D immediately.

7 Prepare the environment to import the converted reports.

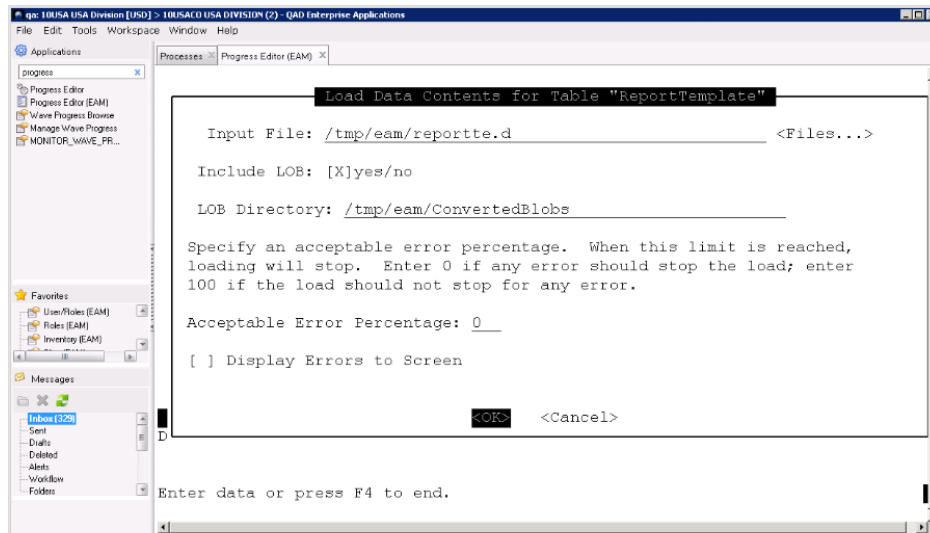
- a In the Progress Editor, select File | Open and open the RemoveAllReportTemplates.p program that you downloaded from QAD.
- b Select Compile | Run.
- c When the program is complete, select File | Close.

Note Do not close the Progress Editor.

8 Import the converted report templates.

- a Access Tools | Data Dictionary.
- b Access Database | Select Working Database and select dataacc.
- c Access Admin | Load Data and Definitions | Table Contents (.d file). Select the ReportTemplate table.
- d Verify there is a > next to the ReportTemplate table name, then tab to <OK> and press Enter.
- e In the Load Data Contents for Table “ReportTemplate” frame, tab into the LOB directory and enter the converted data folder; for example, /tmp/eam/ConvertedBlobs. Then tab to <OK> and press Enter.

Fig. 4
Load Data Contents



- f When the load is complete, press the space bar to continue. Then select Database | Exit.

9 Finalize the conversion of the customized report templates.

- a In the QAD .NET UI, open Enterprise Asset Management | System Administration | Report Designer (EAM).
- b Using the list from step 1 on page 25, highlight an overlay or template in the left panel of the Report Designer. Double-click to open it.

- c Choose File | Save and then File | Close.
- d Open, save, and close every overlay and template in the list.

Upgrade Notes

Revisit Role Setup

New options have been added to the security roles. When the upgrade is complete, review your existing roles to verify that they are set properly.

Role Changes – Maintenance

Role changes have been made to the following:

- Maintenance | Equipment | All Failures| All Failures
- Maintenance | PM/PdM | PM Templates | Copy PM Templates Across Sites
- Maintenance | PM/PdM | PM Templates | PM Tool Lists
- Maintenance | PM/PdM | Master Lists| Tool Lists
- Maintenance | Work Orders | Work Orders | Issue Tools
- Maintenance | Work Orders | Work Orders | Tool Lists
- Maintenance | Tool | Tools | Tools
- Maintenance | Tool | Tools | Tool Serials
- Maintenance | Codes | Work Order | WO Tool Hdr
- Maintenance | Codes | Work Order | WO Tool Detail
- Maintenance | Codes | Tools | Tool Status
- Maintenance | Codes | Tools | Tool Locations
- Maintenance | Codes | Tools | Tool Classes
- Maintenance | Codes | Tools | Tool Types
- Maintenance | Codes | Tools | Tool List Types
- Maintenance | Codes | Tools | Tool Catalogs
- Maintenance | Codes | Tools | Tool Failures
- Maintenance | Codes | Tools | Tool Repairs
- Maintenance | Codes | Tools | Tool Failure Types
- Maintenance | Codes | Tools | Tool Rebuild Locations

Role Changes – Inventory

Role changes have been made to the following:

- Inventory | Inventory | Inventory | Rotable Inventory | Transfer Location
- Inventory | Inventory | Inventory | Rotable Inventory | Relocate

Customer-Reported Issues Resolved and Release Enhancements

The following customer-reported issues have been resolved in this release.

Fixes and Enhancements - EAM 2016.1

Table 3 Fixes and Enhancements for EAM 2016.1 (1 of 10)

Component	QAD Issue	Summary
Analysis	EAMNETS-2139	The Work Order Labor Summary by Pri Craft report now displays the correct value for WO Count when labor is posted on WOs with Pri Craft. Previously, 0 was displayed.
	EAMNET-17001	Tool Number and Serial Number print on the WO document when they have been entered on a WO.
	EAMNET-16924	Route Instruction Lists now include Tool and Serial Number information when printed from the WO Action menu.
Browse	EAMNETS-2134	The Work Order Close Labor History subdetail menu now displays the correct Acct No, Sub Acct No, Dept, and Cost Center from the WO when Labor History is created on entry of labor details in the Work Order Close screen. Previously in the above scenario, Acct No, Sub Acct No, Dept, and Cost Center were displayed from site.
Client UI	EAMNETS-1948	The Inventory With Location report now correctly displays On Hand and UOM values when the report is exported to Excel (XLS). Previously in the above scenario, UOMs were displayed in the On Hand column.
	EAMNETS-1840	The Global Add action in the Physical Inventory Action menu now shows the Global Message Log when the on-hand amount for a consignment part is zero. Previously in the above scenario, a record with a blank Part No and blank Description was populated.
Finance	EAMNETS-2105	Users can no longer repost an MR Trans Type transaction with the Re-post GL Transaction action on the Posted GL Transactions browse if the transaction was created by manually entering Reference on the Unposted GL Transaction browse and Send ERP? is set to No. Previously, repost was allowed.
	EAMNETS-2087	Overhead Groups now correctly displays Total Fixed and Total Rate values when OH Rate code is deleted. Previously in the above scenario, Total Fixed and Total Rate displayed incorrect values.
	EAMNETS-1938	Posted GL Transactions (EAM) now displays the correct Acct No in the GL line for Var-PO when a purchase order with a stocked part is returned using the Purchase Orders Return To Vendor action in a way that creates a variance in posted GL. Previously, in the above scenario, the wrong account was displayed.
	EAMNETS-1935	You no longer see an error in Requisitions related to exceeding the spending limit on a project if you enter a project with jobs attached to it and the project has an Unallocated Balance less than the Total Expensed. Previously, an error message was displayed.
	EAMNETS-1880	The Post action on Unposted GL Transactions no longer allows you to post GL transactions when at least one GL line was created with Spend at this Level=no for a job. Previously in the above scenario, this action was allowed.
Form Designer	EAMNETS-1922	The Report Designer no longer changes the TableName in the data source when a Report Template is copied and saved, and the Report Designed is reopened. Previously, TableName was changed to Primary Table Name.
General	EAMNETS-1934	You can no longer give a Mail Group a Group ID that matches an existing User ID. Previously, you could create a Group ID that matched an existing User ID.
	EAMNETS-1929	When the job program Check PO Balance has the run parameters Notify and Site=* defined and that job completes with errors, EAM only sends mail to the Notify user. Previously, more than one mail per site was sent.

Table 3 Fixes and Enhancements for EAM 2016.1 (2 of 10)

Component	QAD Issue	Summary
	EAMNETS-1925	The Terms lookup on the Detail tab for Vendor now shows the correct credit terms associated with the selected site when you edit Vendor. Previously, the credit terms from the default site were displayed, regardless of the selected site.
	EAMNETS-1873	The Change Status action on the Work Orders browse now displays the server date and time in the Closed Date/Time field when the status is C. Previously, the client OS date and time were displayed.
	EAMNETS-1813	You cannot create a manual GL posting in Unposted GL Transactions when a job has Spend at this Level set to no. Previously in the above scenario, it was allowed.
Inventory	EAMNETS-2130	Stores Requisition Lists now clears the Reserved check box and sets the Short field to zero when the status of an attached WO is changed to X using the Change Status action on the Work Order browse. Previously, the Reserved check box and Status field were not updated.
	EAMNETS-2126	The Inventory browse now displays the correct date in the Physical Due field when a new part is created. Previously, the field was blank.
	EAMNETS-2112	The Part Location browse now sorts the Part Location column correctly. Previously, Part Location did not sort correctly if data in the column contained hyphens.
	EAMNETS-2083	The Receive from Work Order action on the Inventory browse no longer allows users to change the Cost per Part when an internal part is issued to a WO. Previously, Cost per Part could be edited.
	EAMNETS-2066	The Create Requests action on the Stock Replenishment browse does not create a duplicate requisition for a stock part that already has a requisition. Previously, a duplicate requisition was created.
	EAMNETS-2012	The Inventory Value at Date report now displays the correct UOM Cost and Total Cost when the cost method is set to Weighted Average and Modify Cost transactions are performed after the date of the report. Previously, incorrect values were displayed.
	EAMNETS-1955	You can now make the fields Manufacturer and Manuf Part No mandatory on save for Vendor Part submenu. Previously, these fields could not be made mandatory.
	EAMNETS-1930	The correct user ID is now displayed in the e-mail message that is created when a sole source part with an expired vendor price list is added in the Stock Replenishment browse with the Create Requests action. Previously, the wrong user ID was displayed.
	EAMNETS-1875	The Issue action on the Issue Rotable Inventory form no longer disables the Serial No field when the account number is modified. Previously, Serial No was disabled.
	EAMNETS-1869	Stock Replenishment now displays the correct To Order when Order Unit is set to a decimal value in Inventory. Previously, the wrong To Order was displayed.
	EAMNETS-1856	Inventory Transaction History now displays the correct UOM Cost when the Global Issue action is performed for stores requisition lists having multiple parts, including consignment parts. Previously, the wrong UOM cost was displayed.
	EAMNETS-1845	The Inventory Action menu no longer displays the Label Print and Global Label Print actions when Label Printing Service is not installed. Previously, both actions were displayed.
Maintenance	EAMNETS-2143	The Global Edit action on the PM Templates browse now modifies records when the Issue Cycle is set to Month, the PM Complete By is a date greater than the 27th of the month, and the Last Day of the Month is set to No. Previously in this scenario, records were not modified.
	EAMNETS-2122	The Failures browse now allows users to delete a failure code that is used in a WO when the Override Delete? check box is selected for the current user in the Users menu. Previously, users could not delete a failure code.

Table 3 Fixes and Enhancements for EAM 2016.1 (3 of 10)

Component	QAD Issue	Summary
	EAMNETS-2114	The Initialize ERP Operation action on Equip DUOM/ERP Item Conversion correctly displays the word “routine” in the automated message. Previously, “routine” was displayed.
	EAMNETS-2102	The Post Labor and Issue actions do not allow users to enter a future date in the Date field. Previously, a future date was allowed.
	EAMNETS-2079	The All Failures browse now exists in EAM with the columns Failures, Description, WO Count, Percentage of Total WO and MTBF in the upper browse, and CM Work Orders linked with the Failures in the lower browse. Previously, no such browse was available.
	EAMNETS-2070	PM Templates now displays the correct information when text is entered in the Notes subdetail menu of PM Template. Previously, in the above scenario, nothing was displayed.
	EAMNETS-2051	The Work Order Close browse now displays today’s date as the default value in the Date field in the Labor frame when there is no labor history available for this work order. Previously, <Blank> was displayed.
	EAMNETS-2045	Two label have been updated to better reflect their functions in EAM. <ul style="list-style-type: none"> • Next Issue Date is now PM Complete By • PM Due is now PM Issue By
	EAMNETS-2036	The Issue action on the PM Templates browse now opens the WO browse when a WO is created. Previously, the WO browse did not open.
	EAMNETS-1966	Upon posting labor or reversing labor on a WO, the associated form or lookup remains open and active when you save. Previously, the labor form and reverse labor lookup would close upon save.
	EAMNETS-1942	The copy button on the Equipment browse copies data from a selected piece of equipment and uses those details to create a template for a new piece of equipment. The following information is copied: <ul style="list-style-type: none"> • PM templates • BOM content • DUOM • DUOM type • Lower and upper tolerance limits
	EAMNETS-1933	The Close WO action on the Work Order Close browse now changes the status of associated service requests to C when the WO is created with the Create Work Order action from the Service Requests Action menu. Previously, this action was not possible.
	EAMNETS-1931	The Close WO action on the Work Order Close browse now changes the status of all respective service requests to C when a WO is created from multiple service requests using the Global Create Work Order action from the Service Requests Action menu. Previously, only one service request was closed.
	EAMNETS-1928	You can no longer change the status of a closed WO from the WO Close browse. Previously, the WO Close browse did not refresh after a WO was closed and users could change the status of closed WOs. This is no longer allowed.
	EAMNETS-1927	You can now copy selected PM templates across multiple sites and equipment using the Copy PM Template Across Sites action in the PM Templates browse. Previously, this action was not available.
	EAMNETS-1926	EAM now sends an e-mail to the user associated with Assigned when an employee is assigned to or unassigned from a work order. Previously, no e-mail was sent.
	EAMNETS-1848	The Print Document action in the WO Action menu now prints external links that are attached to a master instruction list. Previously, attachments on a WO’s master instruction list did not print.

Table 3 Fixes and Enhancements for EAM 2016.1 (4 of 10)

Component	QAD Issue	Summary
	EAMNETS-1812	The Create Work Order action in the Service Request Action menu now displays the following question, “Work Order <WO No> has been created. Would you like to review it?” with options Yes or No when a WO is successfully created. Previously, no question was displayed.
	EAMNETS-1784	The Service Requests browse now displays a Dept option when you open the Field Picker through the Add/Remove Columns action. Previously, Dept was not available.
	EAMNETS-1761	PM Templates now displays the correct Est Hrs Labor when a master instruction list is attached in the PM Master Instruction List subdetail menu. Previously, zero was displayed. The WO browse now displays the correct Est Hrs Labor when Inst List No is attached in the Instruction List subdetail menu. Previously, zero was displayed.
	EAMNET-16918	Costs incurred from repair, rebuild, and PM work orders accumulate and result in a summary of cost of ownership to keep a tool in working order. Accounting and expenses defined in the Tool definition default into CM and PM WO costs when the serialized tool is entered on a WO. Note: No expenses are recorded when a tool is issued to use for a WO.
	EAMNET-16835	The Cost Analysis submenu shows a summary of the Material, Labor, Contract and other costs for the PM and CM WO in the Tool definition.
	EAMNET-16832	A tool that is being repaired or rebuilt on a CM WO or is in use on a PM WO can be issued to a different WO once its current WO is closed. The Notify user or group for WO complete receives notification when the tool is issued and Tool History is updated with the correct From and To Locations.
	EAMNET-16827	You can issue tools from the following locations: <ul style="list-style-type: none"> • Tool definition • Work Order • Work Order Tool List
	EAMNET-16776	Tool Failure Type can be entered in Tool definition on the Codes tab. You can use Tool Failure Type lookup to select a valid Failure Type defined in the system.
	EAMNET-16769	A new Print Document option action is now available for Master Tool Lists when you print a WO. If selected, the master tool lists attached to a WO print along with the WO.
	EAMNET-16762	You can define Tool Rebuild Locations for use with Rotable Tools. You can enter vendor address and contact information such as phone, fax, and e-mail.
	EAMNET-16609	You can relocate a rotatable part from its current location to another location by selecting the Par ID and associated serial number. You cannot use Relocate from a location with Rebuild or Equipment Location status.
	EAMNET-16422	You can view PM Templates on which the serialized tool is entered.
	EAMNET-16420	You can define failure types with associated repair and failure codes for use with tools that are entered on a WO. Failure codes were renamed Equipment Failure Type and Equipment Failure Codes, and Repair Codes was renamed Equipment Repair Codes.
	EAMNET-16417	You can use the Master Tool List submenu to view the tool lists on which the tool is listed.
	EAMNET-16415	You can enter a serialized tool that is defined in the system on a PM template so that preventive maintenance can be scheduled for that tool Calendar or Meter Issue Method can be specified on the PM template based on the tool’s defined DUOMs. You cannot specify “Both.” You cannot enter a tool and equipment on the same PM template.
	EAMNET-16414	A DUOM Reading submenu is available for serialized tools from the Tool definition. Readings can be updated manually with history recorded. Corrections can be made to the history.

Table 3 Fixes and Enhancements for EAM 2016.1 (5 of 10)

Component	QAD Issue	Summary
	EAMNET-16408	<p>You can create a new Master Tool List by using the copy icon on the toolbar. Select a Master Tool List in the browse and select the copy icon on the toolbar. A Master Tool List sequence is assigned by the system to the new list. The rest of the data is copied from the selected Master Tool List. The new Master Tool List can be modified or deleted, and added to WO and PM templates.</p>
	EAMNET-16395	<p>Access Tool List Types from Maintenance Codes Tools. You can define a type and description. Enter the intended use of these tools in the Type field. Tool list types are useful for filtering Master Tool Lists. The Tool List Type definition is used as a lookup on Master Tool List - Type.</p>
	EAMNET-16325	<p>Use Maintenance Codes Tool to define a catalog and subcatalogs for a defined catalog. These catalogs and subcatalogs can be used in the tool definition using lookups for these definitions</p>
	EAMNET-16322	<p>Use Tool Status to define a meaningful status for a tool. Active, Inactive, and Obsolete are provided in the system. You also can define your own. The status is not used for inventory parts, which are defined separately.</p>
	EAMNET-16321	<p>You can enter an existing tool that has been in use or tracked in another system into the Tool definition. This allows you to add tools independent of a purchase receipt, which provides the ability to directly add a new serial number for an existing tool into the Tool definition.</p> <p>Select New on the toolbar from the Tool browse, enter a Tool No and other tool data, and save. Select New in the lower browse, enter a Serial Number and additional details, and save. The New and Edit buttons on the lower browse are securable by role.</p> <p>The On Hand Quantity for a tool represents the total serial number records in a given Inventory location.</p> <p>Delete is not available for Serial Numbers for a Tool.</p>
	EAMNET-16091	<p>Tool Certification. The Certification Date is an “as of” or effective date, and is automatically updated when using PM WO for a tool. When a serialized tool is entered on a PM template, the Sliding Sch? Is selected by default. A serialized tool's certification date is updated after work is completed on a PM WO or Route PM WO and the WO status is changed to Closed. The certification date is updated to the previous PM Due Date and the Tool Certification flag is automatically selected. Serialized tool Certification Due Date is automatically updated to the new PM Due Date.</p> <p>Certification Due Date can be updated manually by a change to PM Due Date. You can secure access by assigning an owner for the PM template.</p> <p>Serialized tools entered on CM/Rebuild WO are not automatically updated for Certification Date when the WO status is set to Closed. An information message is provided when the status is changed to Closed:</p> <p>“Based on work order completed, an adjustment to PM Due Date may be required for related PM Templates (listing PMs).”</p> <p>When a serialized tool is issued to a QO for use in repair, the system validates the Certification Date has not expired. If it has expired, EAM sends a notification to the Notify user/group. No validations are required for the Certification Date when a serialized tool is added to a PM template, CM WO, or Route PM WO.</p>
	EAMNET-16088	<p>You can select the Master Tool List submenu from within a PM template to add a master tool list. Use the lookup to select a master tool list defined in the system. You cannot create a new master tool list in this submenu, only enter or select from existing lists. One or more master tool lists can be added to a PM template and the same master tool list can be added to different PM templates.</p>

Table 3 Fixes and Enhancements for EAM 2016.1 (6 of 10)

Component	QAD Issue	Summary
	EAMNET-16086	You can select the Master Tool List submenu from within a WO to add a master tool list. Use the lookup to select a master tool list defined in the system. You cannot create a new master tool list in this submenu, only enter or select from existing tool lists. One or more master tool lists can be added to a WO and the same master tool list can be added to different WOs.
	EAMNETS-2056	The Work Order Labor Summary by Cost Center now correctly displays data when the report is filtered on Date Stamp. Previously, no data was returned.
	EAMNETS-2042	The Down Time submenu for Equipment now allows you to modify downtime when Down is selected for Method. Previously, downtime modification was not allowed.
Maintenance, System Administration	EAMNET-16771	<p>The Failure Analysis batch job automatically updates the Failure Analysis for a tool, based on CM WOs on which the tool is entered. The batch job does not include tools on the Master Tool List on a WO, Rebuild WO, or PM Template.</p> <p>The following header fields are updated for tool failure analysis:</p> <ul style="list-style-type: none"> • Failure/Description • WO Count • PM Template No • PM Due Date • Exp Next Failure • Mean Time Between Failure • Site • Alarm <p>No cost input is available or required because cost is not tracked for tools.</p>
	EAMNET-16764	You can view the Failure Analysis submenu for serialized tools.
	EAMNET-16084	<p>You can access Master Tool List from the Maintenance PM Templates Master Lists menu.</p> <p>To create a new master tool list, select New. The system assigns a sequential Master Tool List number. Optionally you can:</p> <ul style="list-style-type: none"> • Select a Tool List Type from the Type lookup or enter a Type in the system. • Enter a description for the master tool list. • Enter a procedure reference that may apply to the master tool list. • Enter an owner, which can be a specific user or owner group. • Enter a site for the master tool list. <p>To add tools to a list, select a tool from the Tool lookup. The system validates that the tool entered is defined in Tool Maintenance. You can add more than one tool to a master tool list, and you can add the same tool to more than one master tool list. Size defaults from the tool definition.</p> <p>You can delete a master tool list. If the list is attached to a PM template or WO, EAM displays a pop-up with the PM templates or WOs that include the list. You can select Yes to continue the deletion. You also can delete a tool from a master tool list. No confirmation is required to delete.</p>
Other	EAMNETS-2110	The Equipment Down Time submenu now allows you to delete a record when an attached WO has a different Failure, Repair, System, or Assembly. Previously, the following message was displayed: “Another user has changed this record after you opened it. You must click <UNDO> button and re-enter your data.”
	EAMNETS-2092	The Authorize action on Projects now displays the message, “Would you like to override the quality person(s) for project Project No.” when the Quality Approver is skipped in Project Budget Approval and Quality Sort is set as First in Sites. Previously, the message, “Would you like to override the quality person(s) for requisition <?>?” was displayed.
	EAMNETS-1946	The Currency Download from ERP job program now downloads currency. Previously, currency was not downloaded.

Table 3 Fixes and Enhancements for EAM 2016.1 (7 of 10)

Component	QAD Issue	Summary
	EAMNET-16536	The EAM Report Framework has been upgraded to the latest ActiveReports version.
Purchasing	EAMNETS-2145	When you receive a PO, you can now modify the exchange rate for that particular PO on an Exchange Rate form when the Update Receipt/Return Ex Rates check box on Domain is selected. Previous versions of EAM did not contain the Exchange Rate form.
	EAMNETS-2142	The Receive action for POs now displays the expected question, "Print the receiver document?" when multiple PO lines are selected and one line has an incorrect Account No. Previously, EAM did not display the question when an error occurred in any of the lines.
	EAMNETS-2129	The Cost Analysis submenu for WOs now displays the correct Planned Material Cost when a PO is received from a requisition that has a WO and the Contractor check box is clear on the requisition line. Previously, an incorrect Planned Material Cost was displayed.
	EAMNETS-2118	Mandatory Fields now makes Commodity non-mandatory on Save for Module Requisition Line and Module Inventory when Buyer/Commodity Purchasing? is cleared on Domain and Domain is then saved. Previously, Commodity remained mandatory.
	EAMNETS-2115	The Purchase Order browse no longer displays vendor contact information for an existing PO when a Primary Contact is added in the Vendor Vendor Contact submenu after a PO is created. Previously, contact information was displayed.
	EAMNETS-2081	3.21.2 Transactions by Item Browse (icbr011.p) now displays the correct exchange rate and price when a PO is ordered and received with different exchange rates in EAM. Previously, incorrect exchange rates and prices were displayed.
	EAMNETS-2076	The PO browse now displays the correct Total Tax when a PO with non-base currency is made taxable and the exchange rate is high. Previously, the incorrect Total Tax was displayed.
	EAMNETS-2074	The Refresh action on the Projects browse now sends e-mail with the correct subject line when multiple jobs attached to a project have exceeded their allocated amount. Previously, the subject line displayed the job numbers as project number and site code.
	EAMNETS-2064	The Cost Analysis submenu for WOs now displays the correct Planned Material Cost when a PO is received from a requisition that has a WO and the Contractor check box is selected on a requisition line that has a Stores Req No. Previously, an incorrect Planned Contract Cost was displayed.
	EAMNETS-2062	The Lock/Unlock action on the PO browse now allows you to unlock Closed or Canceled POs when the current user is the buyer of the locked PO. Previously, you could not unlock the PO.
	EAMNETS-2059	The Purchase Order Report (5.13.5) and Unmatched PO Receipt (5.13.10) now display the correct PO cost and purchase cost when a PO is ordered and received with different exchange rates in EAM. Previously, an incorrect cost was displayed.
	EAMNETS-2057	On save, Requisitions now displays the error, "You are not authorized to purchase under this requisition's current account number of cost center." when the user is not authorized to use the Acct No or Cost Center entered on the requisition header and the Req Auth? check box is selected in Sites. Previously, no error was displayed.
	EAMNETS-2050	The Return to Vendor action on Purchase Orders now correctly returns POs when Auto Issue Inventory Part is added in Purchase Orders and Inv Cost Method is FIFO on Domain. Previously, the purchase order was not returned.

Table 3 Fixes and Enhancements for EAM 2016.1 (8 of 10)

Component	QAD Issue	Summary
	EAMNETS-2048	Requisitions no longer allow you to save a line when you are not authorized to use the Acct No or Cost Center and the Req Auth? check box is selected in Sites. Previously, this action was allowed.
	EAMNETS-2019	The PO browse now displays the correct Total Tax and Total Order Cost for non-base currency POs when a new requisition is added to the PO. Previously, incorrect values were added.
	EAMNETS-2018	The PO browse now displays the correct Total Tax for non-base currency POs when the current exchange rate is updated on POs using the Modify Currency action after modifying the current exchange rate. Previously, the incorrect Total Tax was displayed.
	EAMNETS-2017	The PO browse now displays the correct Total Tax and Total Order Cost for non-base currency POs when a new requisition line is added to a PO. Previously, the incorrect values were displayed.
	EAMNETS-1958	The Reopen Canceled PO action on POs displays the error message, “User is not a buyer; the purchase order reopening not allowed” when the Any Buyer? and Reopen PO/Req? check boxes are selected on Domain and no buyer site is maintained for the employee. Previously, the error message “Any Buyer? is deactivated; only the PO buyers can change” was displayed.
	EAMNETS-1956	You can now save a new requisition in the Requisitions subdetail menu of Purchase Orders when you create the requisition in a closed PO that was reopened using the Reopen to Add Line action and Req Auth? is selected on Site. Previously, EAM displayed the following error, “The PO is on Order so the Requisition must be authorized first.”
	EAMNETS-1954	The Email PO action on Purchase Orders now lists standard clauses after line items when Print Clauses? is set to After on Site. Previously, Standard Clauses were printed before line items.
	EAMNETS-1951	The Receiver document now displays the correct Receive Cost when a PO in non-base currency is received on a previous date with a different exchange rate. Previously, the incorrect Receive Cost was displayed.
	EAMNETS-1950	The Reserve Analysis submenu for Inventory no longer displays stores requisition lines when the header for those lines is deleted. Previously, the stores requisition lines were displayed.
	EAMNETS-1941	The Receive action on Purchase Orders now prompts with the question, “Print the receiver document?” when multiple PO lines are selected and one PO line has the incorrect Acct No. Previously, no question was displayed.
	EAMNETS-1940	28.2.1 Receiver Matching Create (BAPMatching.Create) from Enterprise Edition now matches receivers created in EAM when a purchase order is in non-base currency and the exchange rate is changed before the Receive action is executed. Previously, receivers were not matched.
	EAMNETS-1939	Requisitions now display the correct Total Cost (B) when a requisition line is deleted. Previously, Total Cost (B) was not updated.
	EAMNETS-1936	You can now correctly navigate through the fields and buttons on the Stores Requisition Lists Partial Issue Qty screen when you press the Tab key. Previously, the Qty to Issue field was skipped.
	EAMNETS-1932	A requisition line now displays the correct Order Cost when a vendor with non-base currency is added on Requisitions and the exchange rate is large. Previously, an incorrect Order Cost was displayed.
	EAMNETS-1924	The Print Document action on the Purchase Order Action menu no longer prints “Tax Code” in the PO line when a taxable purchase order with a non-taxable line is created. Previously, Tax Code was printed.
	EAMNETS-1912	The Purchase Orders browse no longer displays the error message “Return Qty cannot exceed Qty Received” when the correct quantity is returned to the vendor. Previously, it displayed the error message.

Table 3 Fixes and Enhancements for EAM 2016.1 (9 of 10)

Component	QAD Issue	Summary
	EAMNETS-1905	EAM can now receive a PO when a project is entered on the PO with an account number in EE that has Cost Center Analysis and Project Analysis enabled and Analysis Limitation set to "One Required." Previously, the following error was displayed, "The GL account requires a cost center or project code."
	EAMNETS-1882	The Create Requisition action on the Stores Requisition Lists Line browse now defaults the cost from the Vendor Price List that is defined in the Inventory Vendor Parts subdetail menu when a part has different Issue UOM and Order UOM. Previously, the incorrect cost defaulted.
	EAMNETS-1853	The Inventory Transaction History and Posted GL Transactions browses now display the correct receiver number for transaction code "I" when the Return to Vendor action is performed. Previously, an incorrect receiver number was displayed.
	EAMNETS-1852	The Job Program now runs correctly when the "Submit PO/Receipts to MFG/PRO" job is run. Previously, the error "***Invalid character in numeric input 1" was displayed in the log.
	EAMNETS-1850	Requisitions now displays the correct date in the Orig Date Due and Date Due fields when a part is added on a requisition line. Previously, incorrect dates were displayed.
	EAMNETS-1817	The Create Requisition action on the Inventory Action menu now defaults the Vendor Name and Taxable?, Tax Code, Tax Class, and Tax Usage from the Vendor as per the tax hierarchy when the same vendor existed in more than one domain. Previously, incorrect tax information was displayed.
	EAMNETS-1808	The PO browse now updates the status to Closed when a PO has multiple requisition lines attached, at least one of those lines has a closed status, and the remaining lines are canceled in Requisitions using the Change Status action. Previously, the status was updated to Canceled instead of Closed.
	EAMNETS-1804	The Create Requisition action on the Inventory Action menu now defaults Expense Site, Acct No, Sub Acct No, Cost Center, and Dept from the Inventory tab in the Sites menu when the Expense Site, Acct No, Sub Acct No, Cost Center, and Dept are not defined in the Accounts submenu of Inventory for an auto-issue part. Previously, nothing was displayed.
	EAMNETS-1760	You can no longer save or release a BO when mandatory fields from Requisition/Purchase Order Save are blank in BO and the "Validate Req/PO Mandatory for BO on Save" check box on the Purchase Order tab in Sites is selected. Previously, BOs were saved and released.
Reporting/Filtering	EAMNETS-2100	The Requisition Document now displays the correct requisitions when Auth, Auth By, or Auth Status is selected in the report selection criteria. Previously, no record displayed.
	EAMNETS-1937	You can now select a transaction date range in the Filter Criteria when running a Parent/Child Cost Summary report. Previously, you could not select a date range.
	EAMNETS-1901	You can now filter by Target Date when running the Open Work Orders report. Previously, the Target Date filter was not available.
	EAMNETS-1860	The Aging Service Request browse now displays the correct value in Days Open when a service request is open. Previously, the wrong Days Open value was displayed.
System Administration	EAMNETS-2124	The Start Job Control action on Job Control no longer starts the Job Control when the current status is Stopping. Previously, the job program could log on multiple times.
	EAMNETS-2084	Vendor Download now defaults Acct No, Sub Acct No, and Cost Center from Supplier Accounts Maintenance of EE when EAM is connected with EE and Vendor Download is performed.

Table 3 Fixes and Enhancements for EAM 2016.1 (10 of 10)

Component	QAD Issue	Summary
	EAMNETS-2058	The Job Program no longer displays the error message, “Invalid Program Name” when a .p file is entered in Program Name and only a .r file is present in the PROPATH environment. Previously, the error message was displayed.
	EAMNETS-2013	The Job Program has improved performance for Job Program 25 when Site is set to * in the Run Parameters. Previously, job performance was slowed.
	EAMNETS-1961	The Print Document action on PO now displays the primary vendor contact information when Purchase Order/Requisition is created after downloading the vendor from EE. Previously, the primary vendor contact information was not displayed.
	EAMNETS-1862	The System Control browse now defaults Wait Hrs to zero if the field is left blank. Previously, the blank field was saved.
	EAMNETS-1806	You can now make the Work Performed field mandatory for the Work Order Close module when you finish a WO. Previously, you could not make Work Performed mandatory.

Release Notes for the EAM 2016 Release

Enterprise Asset Management Version: 2016 (13)

Date: March 2016

QAD Enterprise Applications Versions: Enterprise Edition 2016

Languages Supported: English, Latin American Spanish, Castilian Spanish, Czech, Polish, French, German, Brazilian Portuguese, Simplified Chinese, Korean, Bulgarian, Hungarian.

Upgrade Instructions

To upgrade to EAM 2016, see the upgrade instructions supplied with the release media.

For all other installation information, see the *QAD Enterprise Asset Management Installation Guide*.

New Feature Summary

This section describes the new features and enhancements that are available in EAM 2016.

Work Order Close Browse

A new browse has been added to provide a filtered view of work orders, gathering pertinent information in one location to make entering data more convenient. You can enter maintenance data, repair codes, and work performed data, as well as viewing labor and downtime in a single entry form. The data you enter in the Work Order Close browse is reflected throughout the standard WO module.

Analysis

A new report was added. The Equipment BOM Consolidated report lists the parts that make up a bill of material for a piece of equipment per model and manufacturer. It displays the part numbers, description, total quantity issued, UOM, and the last time each part was issued.

Globally Add or Delete Standard Clauses

You can now globally add or delete standard clauses from multiple vendors using the Standard Clauses Global Change action on the Vendor browse.

Reopen Canceled or Closed Purchase Orders and Canceled Requisitions

You can now reopen a canceled PO and a closed PO to add new lines. These two actions replace the previous Reopen action on the Purchase Orders browse. You can also reopen a canceled requisition with the Reopen Canceled Requisition action, which replaces the previous Reopen action on the Requisitions browse.

Add Existing Rotable Parts into Inventory

You can now add an existing rotatable part directly into an Inventory definition. You initially assign the part to a bin or shelf location on the Inventory browse, and Rotable Inventory then uses the location status to indicate whether the rotatable part is on a piece of equipment, is being rebuilt, or is in inventory.

Upgrade Notes

Preserving Custom Report Layouts

This upgrade completely refreshes the report repository. If you have customized reports or prints, reapply your changes after the upgrade. Inform your system administrators before performing this upgrade. Alternatively, a tool is available from QAD's EAM Support group that helps you to export report layouts before the upgrade begins and to import them again after the upgrade is complete.

The following report templates have been updated:

- Equipment BOM Consolidated
- Inventory Count Sheet
- PM Labor Hours Forecast
- Purchase Order Document
- Receiver Document
- Issue to Cost Center and Account
- Vendor Return Document
- Project Cost Analysis
- Open POs Not Yet Received

Revisit Role Setup

New options have been added to the security roles. When the upgrade is complete, review your existing roles to verify that they are set properly.

Role Changes – Maintenance

Role changes have been made to the following:

- Maintenance | Equipment | Equipment | Down Time
- Maintenance | Work Orders | Work Orders | Stores Req Lists
- Maintenance | Work Orders | Work Orders | Requisition Lines
- Maintenance | Work Orders | Work Orders | Readings
- Maintenance | Work Order Close (All)

Role Changes – Inventory

Role changes have been made to the following:

- Inventory | Inventory | Rotable Inventory
- Inventory | Inventory | Search Descriptors

Role Changes – Purchasing

Role changes have been made to the following:

- Purchasing | Vendor | Standard Clauses Global Change

Customer-Reported Issues Resolved

The following customer-reported issues have been resolved in this release.

Fixes and Enhancements - EAM 2016

Table 4 Fixes and Enhancements for EAM 2016 (1 of 18)

Component	QAD Issue	Summary
Analysis	EAMNET-14016	Added a new report, Equipment BOM Consolidated. This report displays BOM parts per model and manufacturer. It displays the part number, total quantity issued, and the most recent date the part was issued.
	EAMNET-14119	Count Sheet now displays the fields Count By, Count Date, Inventory Number, Inventory Type, Inventory Status, Created By, and Creation Date on the report header. Previously, these fields were missed.
	EAMNET-14321	Pick Tickets can now be printed after an inventory issue from Inventory Maintenance, a Work Order Issue action, and a Store Requisition List Issue action.
	EAMNETS-992	PM Labor Hours Forecast now correctly displays records when a date range is specified for the report. Previously, the date range was ignored.
	EAMNETS-1005	When you print a PO document, it now displays the fax number, phone number, and e-mail entered on the purchase order. Previously, the document displayed the vendor values for those items, regardless of updates made to the PO.
	EAMNETS-1051	The Receiver Document now correctly displays the expense account/sub-account/cost center from the purchase order line when an auto-issued inventory item or non-inventory item is received. Previously, it displayed the receipt account/sub-account/cost center.
	EAMNETS-1369	The Issue to Cost Center and Account report now displays the correct account and cost center groups. Previously, incorrect account and cost center groups were displayed.
	EAMNETS-1377	The Receiver and Vendor Return document now contains a Currency field. Previously, the document did not have a Currency field.
	EAMNETS-1446	Project Cost Analysis now displays the correct projects when the Project field is selected as a criterion of the report. Previously, all projects were displayed.
	EAMNETS-1520	The exported Excel file for the Open POs Not Yet Received report now shows values in the correct columns. Previously, the values were placed in the wrong column in Excel.
Browse	EAMNET-9311	The Export to CSV option for All PO Lines works correctly when the Windows language is set to Polish (non-US language). (EAMNETS-627)
	EAMNETS-1037	The requisition header now displays all work orders, except those with the status X or C, in the WO No field lookup when a user clicks on the lookup. Previously, only work orders with the status O were displayed.
	EAMNETS-1319	The browse filter now displays an error message if you try to save a new filter with an existing name or a blank name. Previously, a blank message was displayed.
	EAMNETS-1398	The UOM browse now displays records with the correct column order when the current user is not an English-language user. Previously, records displayed with an incorrect column order.
	EAMNETS-1516	The Mstr Inst List lookup on PM Master Instruction List now displays the correct record when you search for a single record using "Find." Previously, all records were displayed.
Client UI	EAMNETS-993	The Requisition screen no longer displays a red message notification on validated fields when corrected values have been entered after previous incorrect values prompted the red message notification. Previously, the red message notification remained on the screen.

Table 4 Fixes and Enhancements for EAM 2016 (2 of 18)

Component	QAD Issue	Summary
	EAMNETS-1021	Currency Download no longer shuffles the record's position when you download a single currency record. Previously, the program repositioned the record.
	EAMNETS-1027	Product Line now displays a lookup for the Domain field when you create a new record. Previously, no lookup was displayed.
	EAMNETS-1170	The Projects Cost Analysis submenu now correctly shows the labor burden value when the Reverse Labor action is performed on a work order. Previously, the labor burden value was zero.
	EAMNETS-1290	Stock Replenishment now allows you to update an item number manually when an inactive or invalid item is added manually. Previously, you could not update the item number.
	EAMNETS-1297	You can no longer add a record in the child browse of Unposted GL Transactions if no records are available in the parent browse.
	EAMNETS-1341	Polish (non-US language) users who log into and then out of QAD EE can now successfully export EAM browses to Excel with comma separators in the CSV file when Export CSV is selected on Site and Windows Regions is set to English. Previously, the CSV file exported with semicolon separators.
	EAMNETS-1396	Inventory now displays a red color on the Order UOM and Issue UOM fields in the Stock Detail tab if a new part is created with a blank default value in Order UOM and Issue UOM. Previously, no red color was displayed.
	EAMNETS-1430	The Inventory Issue action no longer displays an error message on a change of location when the quantity is zero or negative. Previously, the error message "Qty to Issue cannot be less than or equal to 0" was displayed.
	EAMNETS-1442	The Inventory Global Expense Account action now allows users to select an expense site from a drop-down menu containing all sites. Users can also select an Exp Dept, Exp Cost Center, Exp Acct No, and Exp Sub Acct for the expense site when they have selected multiple inventory records and performed a Global Expense Account action. Previously, the drop-down menus were blank.
	EAMNETS-1451	A stock replenishment is no longer deleted after giving the error, "A requisition exist with Stock Run No <no>, Delete not allowed," when a requisition is attached to a stock replenishment and the Delete button is selected. Previously, the stock replenishment was deleted.
	EAMNETS-1704	Users can now open the Revisions browse when they click on the Revisions module. Previously, a blank message box was displayed.
Data Entry	EAMNET-15467	The record ID no longer disappears from the title bar when users save a new part, user, project, or equipment record. Previously, the record remained open for editing but the record ID did not display in the title bar.
	EAMNETS-1381	Physical Inventory now displays the default location when a single part number is added into physical inventory. Previously, no location was displayed.
	EAMNETS-1405	The Work Order Instruction List now allows users to modify the Description field to create a multi-line description. Previously, this functionality was not available.
Finance	EAMNET-16033	The Posted GL Transactions browse now has a Re-Post GL Transaction action.
	EAMNETS-1015	Posted GL Transactions now correctly displays the quantity and total cost values when inventory is received from relocation. Previously, the quantity and total cost values were incorrect.
	EAMNETS-1116	The Projects Authorize action now sends mail notification to the project Notify user when the project amount is less than the originator's project limit. Previously, no mail notification was sent to the project's Notify user.
	EAMNETS-1173	The Project Cost Analysis Material tab now correctly displays the column name, Requisition No. Previously, the column was labeled Multi-Line No.

Table 4 Fixes and Enhancements for EAM 2016 (3 of 18)

Component	QAD Issue	Summary
	EAMNETS-1207	The Global Order action on the Purchase Order browse no longer orders any of the selected purchase orders when the total amount of the selected purchase orders exceeds the project limit. Previously, some of the purchase orders were ordered.
	EAMNETS-1246	Users can now choose to display a Description column in the Acct, Sub-Acct, CC, and Dept field lookups on the Post Labor screen in Projects. Previously, descriptions were not available. In addition, requisitions now validate the combination of account/sub-account/cost center from Projects when users save a requisition. Previously, there was no account/sub-account/cost center validation on saving a requisition.
	EAMNETS-1285	The Overhead Group action Delete now properly performs validation by site when the same OH Group is created in two different sites, and only one is used in Labor/Employee. Previously, the site was not validated and OH Group could be deleted.
	EAMNETS-1332	The Projects Change Status action now allows users to close a project if a requisition without the project was added to a PO that already had a requisition with the project attached to it. In the past, the requisition without the project prevented users from closing the project.
	EAMNETS-1353	The Req Approval Group field lookup in Cost Centers now displays site-specific requisition approval group records for non-primary sites when users select the same non-primary site in Cost Centers. Previously, no records for non-primary sites were displayed.
	EAMNETS-1391	Inventory Issue now displays the error message, “Parts location record is in use by another user” and the GL transaction does not post in ERP when the same part location record is locked by another user. Previously, the GL transaction was posted in ERP.
	EAMNETS-1402	The Unposted GL Transactions Line level entry screen now allows users to enter a job number when the Spend at this Level? field is disabled at Project. Previously, an error message was displayed.
	EAMNETS-1427	The Invoices subdetail menu in Projects now shows a column label of Expected Payment Date with the correct date from the customer invoice in ERP when a customer payment is performed in ERP for the sales order invoice with the same project. Previously, the column label Paid Date was displayed.
	EAMNETS-1453	Users can now update the Spend at this level? field in Projects when the User Allocations? field is unchecked. Previously, that update was not allowed. Users can no longer save a requisition line when Spend at this level? is unchecked on a project attached to a requisition. Previously, that scenario was allowed.
	EAMNETS-1477	The Projects browse and Project lookup window now display correct values for the Spending Limit field. Previously, incorrect values were displayed.
	EAMNETS-1494	Projects (EAM) now displays the correct Ext Mtrl Cost and Tax Cost on Receive of a taxable PO when the project is attached to the PO and the Project Include Tax? field is selected on Site. Previously, tax was included in Ext Mtrl Cost and zero was displayed in Tax Cost.
	EAMNETS-1549	The Invoice subdetail menu in Projects now correctly displays the amount paid when a sales order is created using the same Project, Invoiced, and Adjusted against Credit Note in EE. Previously, an incorrect value was displayed in the Paid Amount field.
	EAMNETS-1561	Routing in Projects now correctly displays the spending limit of quality approvers and sorts records by that spending limit. Previously, the spending limit was shown as zero and sorted alphabetically by user ID.

Table 4 Fixes and Enhancements for EAM 2016 (4 of 18)

Component	QAD Issue	Summary
	EAMNETS-1634	Users can now increase the allocated amount in Projects for parent jobs that have the Spend at this level? field set to No when they order a PO containing a child job with the Spend at this level? field set to Yes. Previously, an error message was displayed.
	EAMNETS-1671	The Posted GL Transactions browse now correctly displays the account, sub-account, cost center, and department for tax transactions from requisition lines when a taxable PO is received for non-stock parts and the NStock Tax? field is set to Yes for the tax rate in the PO. Previously, the wrong account was displayed.
	EAMNETS-1678	The GL Calendar Period Close action now prompts with the message, “This will close ALL sites in the CURRENT DOMAIN to which you have access. Continue?” when the user clicks the Yes button on the Close account Calendar for period message box. Previously, the message read, “This will close ALL sites to which you have access. Continue?”
	EAMNETS-1726	The Posted GL Transactions browse now displays the correct receiver number in the Receiver column when the Return To Vendor action is performed on a PO. Previously, the incorrect receiver number was displayed.
General	EAMNETS-1141	Users no longer encounter an error when selecting the Commodity field lookup on the Inventory, General tab. Previously, users saw the error, “Error getting page of results. QUERY-PREPARE requires that SET-BUFFERS has been used to assign buffers to query.”
	EAMNETS-1198 and EAMNETS-1337	Users no longer receive an errant error message when they make a correction to an equipment’s DUOM reading. Previously, users saw the message, “You have entered a rollover,” despite not having entered a rollover.
	EAMNETS-1210	The Employee screen no longer displays the error “Invalid Cost Center” when saving an employee record with a valid cost center. Previously, the error was displayed.
	EAMNETS-1250	Routing substitute now displays the correct confirmation message, “Are you sure you want to delete this record?” and deletes the record when the Delete button is clicked. Previously, the incorrect message, “Routingsubstitute” was displayed.
	EAMNETS-1252	Users can now select the Location field in the Report Designer for the WO Parts List report. Previously, the Location field was not available.
	EAMNETS-1316	The Work Order Print Document and Global Print Document actions both print only the attached documents when a user selects to print only the attachments. Previously, the Global Print Document action printed the WO document along with the attachments, even when the user selected to only print the attachments.
	EAMNETS-1322	The Instruction List header no longer allows the current user to modify the Owner field when the current user is neither the owner nor belongs to the Owner Group in the Owner field. Previously, all users could modify the Owner field.
	EAMNETS-1435	The Domains Site field no longer contains a lookup. Previously, the field had a lookup.
	EAMNETS-1602	The Excel Export and Print buttons are now enabled on the User Sessions browse when a user’s role has view access for User Sessions. Previously, both the Excel Export and Print buttons were disabled.
	EAMNETS-1608	The Inventory Notes subdetail menu now displays the correct notes for the inventory item when the item number contains a comma. Previously, when a user tried to save and retrieve notes and the inventory item number contained a comma, Inventory Notes did not display anything.
	EAMNETS-1747	The Sites browse now displays the correct NStock Acct No, NStock Sub Acct No, NStock Cost Center, and NStock Dept values when those columns are added to the Sites browse. Previously, only the top site record was displayed.
Integration	EAMNETS-1146	The Requisition Line browse now displays the asset sub-account when a requisition line is created for consigned inventory. Previously, an incorrect value was displayed.

Table 4 Fixes and Enhancements for EAM 2016 (5 of 18)

Component	QAD Issue	Summary
	EAMNETS-1260	The Download Vendor action on the Vendor Download browse now downloads the vendor's remittance address when that address is entered or updated in the ERP. Previously, the vendor's remittance address did not download.
	EAMNETS-1307	The Vendor Download browse now displays only suppliers with complete data in the ERP. Previously, the browse displayed all suppliers.
	EAMNETS-1570	The Download Vendor action on the Vendor Download browse now correctly removes the vendor's remittance address if that address is removed in the ERP. Previously, the vendor's remittance address was not updated.
Inventory	EAMNET-4731	The Excel Export button found on the Vendor Cost submenu at Enterprise Asset Management Inventory Vendor Cost is now active.
	EAMNET-15044	<p>The Rename Inventory action was added to the Inventory Action menu. This action renames all parts in all sites to the new part number. It also updates all transaction history and all data related to the part, and changes that data to the new part number.</p> <p>The following tables are affected:</p> <ul style="list-style-type: none"> • attachments • inv_mstr part_no • eqpt_warr part_no • lab_deta part_no • mgl_t_det part_no • part_hist part_no • part_hist_cons part_no • parts part_no • parts_acct part_no • parts_alt part_no • parts_common part_no • parts_consign part_no • parts_fifo part_no • parts_loc part_no • parts_manuf part_no • parts_status part_no • parts_status rpart_no • parts_vend part_no • phy_inv part_no • pm_parts part_no • po_items part_no • po_items rpart_no • req_grp_hdr part_no • rfq_line part_no • serial_hist part_no • serial_pt part_no • serial_wo part_no • stock_out part_no • stock_out rpart_no • stock_parts part_no • transfer part_no • transit from_part_no • transit part_no • uom_conv part_no • vn_part part_no • vn_quote part_no • wo_part_hdr part_no • wo_parts part_no • work_order fab_part_no

Table 4 Fixes and Enhancements for EAM 2016 (6 of 18)

Component	QAD Issue	Summary
	EAMNET-15044 (Continued)	<ul style="list-style-type: none"> • work_order part_no • bo_line part_no • vn_cost part_no • equip_rotable part_no <p>If Include ERP is checked, the following ERP tables are updated with the new part number:</p> <ul style="list-style-type: none"> • pod_det.pod_part • pvod_det.pvod_part • tr_hist.tr_part • prh_hist.prh_part • pvo_mstr.pvo_part
	EAMNET-15080 and EAMNETS-1093	(EAMNETS-939/EAMNETS-1038) The Parts Lists no longer allows users to enter a negative quantity in Parts Lists Line. Previously, users could enter a negative quantity.
	EAMNET-15404	<p>(EAMNETS-966/EAMNETS-980) The following Inventory Action forms now ask for confirmation when users click X to leave:</p> <ul style="list-style-type: none"> • Inventory -> Issue • Inventory -> Issue (Consign) • Inventory -> Return to Inventory • Inventory -> Relocate • Inventory -> Receive from Relocation • Inventory -> Receive from Work Order • Inventory -> Return to work Order • Inventory -> Adjust • Inventory -> Transfer Ownership • Inventory -> Modify Consignment • Inventory -> Modify cost • Inventory -> Modify cost (Consign) <p>Previously, these forms closed without displaying a confirmation question.</p>
	EAMNET-16426	Fixed an issue with the Inventory Issue action where FIFO issues orphaned requisition lines.
	EAMNET-16481	Users can now add an existing rotatable part to an inventory definition, even if there is no purchase receipt.
	EAMNETS-1008	The Inventory Vendor Parts submenu now displays the error “Vendor Part cannot be more than 30 characters long” if a user enters a vendor part number longer than 30 characters. Previously, the submenu allowed an invalid part number length.
	EAMNETS-1024	When the Reserve Inv flag is selected in Domain, the Issue action on the PM Templates browse now reserves the non-serialized stocked part in the Stores Requisition List and updates the Available and Reserved fields in Inventory. Previously, the inventory was not reserved.
	EAMNETS-1055	The FIFO/LIFO Stack submenu now correctly displays inventory records when multiple Issue and Return to Inventory actions are performed. Also, the Return to Inventory lookup correctly displays the Net Qty Issued value when the Return to Inventory action is performed. Previously, the FIFO/LIFO Stack displayed incorrect inventory and the Return to Inventory lookup displayed incorrect values for the net quantity issued.
	EAMNETS-1063	The Global Edit action on the Inventory browse now updates the Catalog and Sub Catalog fields in all the records in Inventory when those fields are set as mandatory fields. Previously, inventory records were not updated and error messages were displayed.
	EAMNETS-1165	Posted GL Transaction and Inventory Transaction now display a single transaction for a single Return to Inventory action. Previously, multiple posted GL transactions and inventory transactions were created.

Table 4 Fixes and Enhancements for EAM 2016 (7 of 18)

Component	QAD Issue	Summary
	EAMNETS-1177	The Vendor Part's Price Schedule browse now contains a Modify Exp Date action, which allows users to modify the expiration date of an existing record. Previously, the expiration date was not editable.
	EAMNETS-1189	The Purchase Orders Receive action now prompts the error message "The Receipt did not process due to inventory transaction number already in use. Please use the Site Sequences to update the Inventory Transaction Number" if the inventory transaction number is already in use. Previously, in this scenario, there was no message.
	EAMNETS-1191	The Modify Cost action on the Inventory browse now creates a revision when Track Revision is selected for a site's inventory in Revision Control. Previously, no revisions were created.
	EAMNETS-1197	When an inventory source is changed from vendor to internal, the Inventory screen now displays Vendor Parts and Vendor Cost details. Previously, in this scenario, Vendor Parts and Vendor Cost details were not displayed.
	EAMNETS-1227	The Part No look up on the Inventory with Location report now displays all parts for the selected site. Previously, the report displayed only serialized parts for all sites.
	EAMNETS-1236	When an auto-issue purchase order is received, the account number/sub-account/cost center in Inventory Transaction History for the receipt line now match the posted GL transaction. Previously, the two did not match.
	EAMNETS-1266	The Purchase Order browse correctly displays the On Order quantity when the PO status is changed to C using the Change Status action after partially receiving the PO with the same UOM. Previously, the wrong quantity was displayed.
	EAMNETS-1273	The Inventory Locations screen no longer allows you to delete a part location that has a zero on-hand quantity and an open requisition without a PO. Previously, the screen allowed you to delete the part location.
	EAMNETS-1276	The Inventory screen no longer allows you to leave blank values in the following fields: <ul style="list-style-type: none"> • Reorder Point • Min Ord Qty • Safety Stock • Mgt Max Qty • Order Unit
	EAMNETS-1329	Now, when a requisition line has a part that is marked as Auto Issue and the on-hand quantity in inventory is zero, the PO receipt updates the inventory cost for auto-issue and non-auto-issue parts. Previously, the inventory cost was not updated. In addition, you cannot change a non-auto-issue inventory part to auto issue when the on-hand quantity is not zero for that part. Previously, this change was allowed.
	EAMNETS-1335	The Inventory Alternates screen now shows the correct lookup browse views from their source browses when clicking the lookup for the part and site. Previously, different browse views were shown.
	EAMNETS-1348	The Return to Vendor action on a PO now correctly updates the cost for the part and creates a variance amount transaction when the Inv Cost Mthd is Weighted Avg. Previously, the cost was updated incorrectly and there was no variance transaction.
	EAMNETS-1388	The Stock Replenishment job program now creates a requisition or work order when the parameters in the job program are set to: <ul style="list-style-type: none"> • Sole source? = Yes or Source = internal And <ul style="list-style-type: none"> • Automatically is set to Create Req in Sites > Misc Tab Previously, no requisition or work order was created.

Table 4 Fixes and Enhancements for EAM 2016 (8 of 18)

Component	QAD Issue	Summary
	EAMNETS-1416	When a discount is defined in Vendor Price Schedule in Vendor Part, the Requisitions browse now displays the correct discounted cost. Previously, the cost was displayed without the discount.
	EAMNETS-1419	Now, when the order UOM is different than the issue UOM and the vendor part is available in inventory, Stock Replenishments displays the correct value in the To Order field. Previously, the To Order field displayed an incorrect value.
	EAMNETS-1421	Now, when a user clicks on the lookup for the WO No field, the Stores Requisition Lists header displays all work orders, except those with a status of X or C. Previously, only work orders with a status of O were displayed.
	EAMNETS-1467	Now, when Stores Auth? is set to All (Simple) and the Stores Approval Group is added in the User Approval Group submenu for the current user, Stores Requisition Lists approves authorization. Previously, in this scenario, Stores Requisition Lists displayed an error message.
	EAMNETS-1475	Now, the Create Request action in Stock Replenishment displays a message and sends an e-mail for a sole source part when that part has a vendor price schedule with an expired date. Previously, a requisition/PO was generated.
	EAMNETS-1487	Stores Requisition Lists Lines now allow any user with proper access to perform an issue when the Stores Requisition List was authorized by another user. Previously, the following message was displayed: "Store Requisition List has been authorized only the authorizer can update."
	EAMNETS-1497	Now, the Equipment lookup in Inventory Issue displays the correct equipment records when the To Site is different from the default site. Previously, the wrong equipment records were displayed.
	EAMNETS-1503	Now, Posted GL Transactions and Inventory Transaction History display multiple entries for multiple stack records when the Return to Vendor action in a PO is performed. Previously, a single GL and Inventory transaction was displayed.
	EAMNETS-1525	Now, the Pick Ticket report in Inventory displays the total issue quantity in the Qty Issues field when the quantity issues from multiple stacks. Previously, the Qty Issues field displayed the quantity from the last transaction.
	EAMNETS-1538	A Physical Inventory status change to Close for large numbers of parts, in excess of 3500, now completes in a reasonable time. Previously, the process did not complete.
	EAMNETS-1540	Now, when a requisition is created using the Create Requisition action in the Inventory menu, the requisition displays the correct value for Total Cost (B). Previously, Total Cost (B) displayed zero.
	EAMNETS-1559	Now, when a UOM that is used on Inventory is deleted, Inventory no longer allows you to issue inventory. Previously, issues were allowed.
	EAMNETS-1577	Now, the Inventory Value at Date report correctly prints Values as of Date when Today is selected as the effective date in the filter criteria of the report. Previously, "1/1/0001" was printed.
	EAMNETS-1582	Now, Inventory does not allow users to create records with part numbers that exceed 18 characters. Previously, part numbers that exceeded 18 characters were allowed.
	EAMNETS-1604	Now, Physical Inventory displays the correct data for the On Hand, Count, and Current Qty fields when you add an inventory part to a physical inventory line item. Previously, a zero quantity was displayed.
	EAMNETS-1656	Now, the Vendor Parts subdetail browse in Inventory allows you to delete the vendor scheduled price when the Windows regional and language setting is changed to French. Previously, the record was not deleted.
	EAMNETS-1681	Now, the lower browse on Inventory displays the default location in ascending order and sorts the locations by ascending order when multiple locations are associated with inventory parts. Previously, locations were not sorted by ascending order.

Table 4 Fixes and Enhancements for EAM 2016 (9 of 18)

Component	QAD Issue	Summary
	EAMNETS-1682	Now, the Stores Requisition Lists displays the correct values for the On Hand and Available fields when the part and location are selected on a Stores Requisition line. Previously, the On Hand and Available fields did not exist.
	EAMNETS-1698	Now, the Stores Requisition Lists allows users to issue quantity when an open requisition exists for the stores requisition. Previously, the following error message was displayed: "Open requisitions exists for this stores list; it cannot be closed."
	EAMNETS-1706	Now, the Stores Requisition Lists header displays a blank value in the Rotable Part field when a requisition is created from work orders with a non-stock part on a requisition line. Previously, the non-stock part was displayed.
	EAMNETS-1708	Now, the Stores Requisition List screen displays the part location when parts are added by performing Copy BOM or Copy Master Parts List actions. Previously, a blank location was displayed.
	EAMNETS-1710	Now, Physical Inventory remains open when the current date is not in the GL period and the user tries to change the status to Closed. Previously, Physical Inventory closed if a user attempted this action.
	EAMNETS-1715	Now, Stock Replenishment populates the part's default vendor in the middle browse when the part number is entered manually and the user presses the Enter key. Previously, a blank value was displayed.
	EAMNETS-1740	Now, the Returns action in Stores Requisitions Lists (EAM) correctly displays the inventory transaction records that you can select for return when the Return action is performed on a Stores Requisition line that is already issued. Previously, no records were displayed.
Inventory, Purchasing	EAMNET-15591	Now, when returning a non-stock part, if the GL validation fails, you receive an error on the validation and the return does not process.
Maintenance	EAMNET-14654	The stores requisition number is now populated on the Parts Status and General Ledger records when the WO action, Issue, is used to issue a part to the work order.
	EAMNET-15078	(EAMNETS-934) The Date Due is now set correctly.
	EAMNET-15680	The WO Close browse provides a filtered view of WOs that can be selected when maintenance or repair work has finished. Users can also select the WO from the WO Close browse.
	EAMNET-15681	Work Order Close provides a Downtime subdetail so that you can review the downtime entered before changing the WO to Finished or Closed. This is the same Downtime view as in Work Order.
	EAMNET-15682	Work Order Close provides a Labor History subdetail, so that you can review the labor entered before changing the WO to Finished or Closed. This is the same Labor History view as in Work Order.
	EAMNET-15683	Using the Finished and Close actions from Work Order Close updates the work order Finished/Closed Date/Time/UserID fields, which is the same behavior as a Change Status for a WO. Once a work order is finished, it remains visible in the WO Close browse. Once a work order is closed, it is no longer visible in the WO Close browse. Users can still use the Change Status action from the WO module to Finish and/or Close the work order. Finish and Close actions can be secured separately for WO Close.
	EAMNET-15684	Work Order Close provides the Post Labor action so you can enter additional labor before updating the WO to a Finished or Closed status. This is the same Post Labor action as that available on Work Order.
	EAMNET-15685	Use WO Close to enter maintenance codes, repair codes, and work performed, and to record labor and downtime in a single entry form so that you can update the work order to a Finished or Closed status.

Table 4 Fixes and Enhancements for EAM 2016 (10 of 18)

Component	QAD Issue	Summary
	EAMNET-15686	Mandatory fields for the maintenance and repair codes used in Work Order Close can be specified for Finish WO and Close WO action updates. Different mandatory fields can be selected for Finish versus Closed. These fields are separate from the mandatory fields for Work Order.
	EAMNET-15689	Work Order Close provides a Reverse Labor action so you can reverse labor entered before updating to a Finished or Closed status. This is the same Reverse Labor action as that available on Work Order.
	EAMNET-15717	When a change is made to the op_hist file in the ERP, the change is now reflected in EAM. When the DUOM Load job program runs, EAM checks if there is already a reading record equal to or newer than the job to be created. If a record exists, EAM applies the reading to its effective date and recalculates all of the reading records going forward.
	EAMNETS-1107	Equipment Readings now calculate correct usage in all user languages when the DUOM type is Meter. Previously, usage was calculated only when the user language was English.
	EAMNETS-1112	The Work Orders subdetail browse in Service Requests no longer shows work order records that were removed from a service request using the Remove Work Order action and after the WO subdetail browse is refreshed. Previously, a removed WO record was displayed.
	EAMNETS-1126	The Service Request browse now sends an e-mail notification to the originator and displays a pop-up message to specify reasoning when a service request is canceled or deleted. Previously, no e-mail notification was sent, and the pop-up message was not displayed.
	EAMNETS-1144	A requisition line now correctly defaults the order cost from the vendor price schedule when a requisition is created through Inventory and a vendor price schedule is maintained for it. Previously, the order cost defaulted incorrectly.
	EAMNETS-1184	The Export Excel button is now active on the Cost Analysis subdetail menu in Equipment on the Labor, Material, and Contract tabs. Previously, the button was inactive.
	EAMNETS-1256	The Equipment action Rename Equipment now creates a revision record for an equipment number change and carries over the change from the old equipment. Previously, the revision record was not created and old revision records were not carried forward.
	EAMNETS-1280	The PM Labor Hours Forecast Report now includes PMs in the report when the next issue date is prior to the report's specified date range and the issue method is Calendar. Previously, PMs were excluded.
	EAMNETS-1293	Work orders with a closed status can now be reopened using the Reopen action when Fabricated is selected on the WO. Previously, work orders could not be reopened.
	EAMNETS-1314	Requestors now receive e-mail notification when a purchase order is received. Previously, no e-mail notification was sent to the requestor.
	EAMNETS-1326	The WO Equipment tab now includes DUOM and DUOM Type in the Problem field when a CM WO is created by an equipment reading that exceeds the defined tolerance limit. Previously, the tab displayed only the reading, date, time, and user.
	EAMNETS-1351	The Work Order Document no longer prints the Clearance field below the document's border and also does not merge the Procedure and Type fields when a user prints a WO along with an Instruction List. Previously, the Procedure and Type fields were merged and the Clearance field was printed below the border.
	EAMNETS-1359	The Global Edit action on the Work Orders browse now correctly displays employee records in the Assigned lookup with the site selected on the WO browse. Previously, employee records from all sites were displayed.

Table 4 Fixes and Enhancements for EAM 2016 (11 of 18)

Component	QAD Issue	Summary
	EAMNETS-1375	Work Orders Revisions now displays the revisions for Work Order Instructions Lists when an instruction attached to the work order is modified and revision control is set to Yes for work orders at Site. Previously, no revisions were displayed.
	EAMNETS-1385	Service Requests e-mail notification now displays the full text of the Assigned Name, Auth By Name, Notify Name, Orig Notify Name, and Originator Name fields when the status is changed for a WO created using a service request. Previously, IDs were displayed instead of names.
	EAMNETS-1400	The Change Status action on Work Orders now prompts a red notification icon on mandatory fields if users try to close a WO and invalid or blank values are entered in mandatory fields. Previously, the red notification icon was not displayed.
	EAMNETS-1410	The WO Equipment tab now displays the problem text as “Reading of <reading> for <Equip No> on <Date> at <Time> by <userid>” when a CM WO is created by an equipment reading that exceeds the defined tolerance limit. Previously, the tab displayed, “Reading of <DUOM Type> for <DUOM> <Reading> on <Date> at <Time> by <User>.”
	EAMNETS-1423	The Login screen now sends e-mail notification of a locked user to sysadm if a user exceeds the maximum login attempts by entering the wrong password and if the Restrict Password flag is set to Yes in System Control. Previously, in this scenario, no e-mail notification was sent.
Maintenance	EAMNETS-1479	The Service Request browse now sends an e-mail notification to the originator or notify user and displays a pop-up message to specify reasoning when a service request is canceled or deleted and a mail group is entered in the Originator or Notify fields. Previously, no e-mail notification was sent to the users in the mail group.
	EAMNETS-1500	The Equipment priority that is assigned in the Equipment record now defaults in the service request. Previously, no default value was displayed.
	EAMNETS-1518	The Instruction List subdetail menu of PM Templates and Work Orders now contains a Revision column with the latest revision number in the Instruction List Steps. Previously, the Revision column was not present. The Instruction List subdetail menu of PM Templates and Work Orders now displays the latest revision number for the Instruction List Header when a user creates revisions for the Instruction List Header. Previously, the Revision column was empty.
	EAMNETS-1529	Service Request now displays the correct priority, defaulted from Equipment, when a new service request is created using Equipment’s Service Request subdetail menu. Previously, no priority was displayed.
	EAMNETS-1590	The Work Orders browse Post Labor action now allows hours in three-digit format up to 999 in the Time (HH:MM) field and displays an error message “Hours must be between 00 and 999” if the hours value entered has more than three digits. Previously, three digits were not allowed.
	EAMNETS-1695	The Work Order Document now prints the correct finished time when Finished Time is added using the EAM Report Designer. Also, Work Orders now displays the correct Time (Finished) when a WO status is changed to Finished. Previously, nothing was displayed.
	EAMNETS-1697	The Readings submenu for Equipment now updates the DUOM reading for all child equipment that has parent equipment with the Upd Children? check box selected. Previously, the last child DUOM reading was not updated.
	EAMNETS-1701	Service Requests now open the Work Orders browse when the Create Work Order action is performed for the selected service request. Previously, a blank error message was displayed.

Table 4 Fixes and Enhancements for EAM 2016 (12 of 18)

Component	QAD Issue	Summary
	EAMNETS-1720	Equipment's subdetail Rotable History menu now displays only rotatable part records in the lower browse for the related "To Site." Previously, the lower browses displayed records from all sites.
	EAMNETS-1742	Work Order now includes the DUOM in the Problem field when a CM work order is created when an equipment reading exceeds the defined tolerance limit. Previously, Work Order displayed only the reading, equipment, date, time, and user.
	EAMNETS-1748	The Readings submenu in Equipment now allows French users to view readings that were created by English users. Previously, the error message "Type non valuable" was displayed.
	EAMNETS-1750	The Copy action in Work Orders now creates a stores requisition with the correct account number when the Stores Requisition is attached to the original WO. Previously, the wrong account number was assigned to the stores requisition.
	EAMNETS-1778	The Readings submenu in Equipment now displays the DUOM type in the current user's language when the reading is created by a different user with a different language. Previously, the DUOM type did not translate to the current user's language.
	EAMNETS-1780	Work Orders now disables the Action menu on a data entry screen when a record is in a modified state. Previously, the Action menu was enabled.
Maintenance/Inventory	EAMNET-14596	Work Order Class and Parts Class now allow you to delete records that are not currently being used.
Other	EAMNETS-1108	The following functions no longer display Progress errors in the appserver log file: <ul style="list-style-type: none"> • Purchase order receipts • Updates to the expiry date of blanket orders • Create Requisition action in Stock Replenishment
	EAMNETS-1339	The e-mail subject line now displays correctly when an e-mail is received on a change of due date in Requisitions by a Chinese user. Previously, the subject line displayed unintelligible characters.
	EAMNETS-1461	The Equipment browse no longer contains Ancestor, Level, and Family columns when a user modifies the browse using Field Picker. Previously, these fields were present.
	EAMNETS-1490	In this release, when the DUOM Load Job program is running and the Custom field is set to op_chr02, Ignore Tools is OFF, Separate Tools is ON for Site, and the same tool code is used in EAM and ERP transactions: <ul style="list-style-type: none"> • The Operation Transaction browse in ERP displays "MLS" in the From Operation field • EAM's Equipment Reading displays a new reading • Trans displays the last transaction number in Sites Previously, in this scenario, nothing was updated.
	EAMNETS-1719	Registry no longer displays a record for Data Name = "UNIX Mail command." Previously, a record was displayed.
Purchasing	EAMNET-13281	A user already logged into EAM who is the Next Approver for a group of selected requisitions does not have to re-enter a password to approve or disapprove the requisitions. You can set this option by site to avoid redundant verification.
	EAMNET-15149	The Global Authorize action on the Requisitions browse now displays an Info message type in the Global Message log when the displayed messages are informational. Previously, the browse displayed the message type, Warning.
	EAMNET-15224	If users enter a correct department code in the Department field of Vendor Maintenance Receipt Credit, they no longer receive an error stating that the department is invalid.

Table 4 Fixes and Enhancements for EAM 2016 (13 of 18)

Component	QAD Issue	Summary
	EAMNET-15360	(EAMNETS-961) The Order action on the Purchase Orders browse no longer displays the error “Vendor &1 does not exist in MFG/PRO. PO &2 could not be updated there” when a requisition is created using a WO from a non-default site of a different domain. Previously, the Order action displayed an error.
	EAMNET-9539	(EAMNETS-667) When a foreign currency PO is created and must be paid in that currency, the PO cost now displays the amount to be paid to the vendor. Previously, the open amount on the supplier invoice did not always equal the PO cost.
	EAMNETS-1000	The Purchase Order header now displays the correct values for Total Cost and Total Order Cost when a PO is created using a requisition in a non-base currency and the exchange rate is high. Previously, the header displayed incorrect values.
	EAMNETS-1003	The requisition header from the Requisitions menu no longer displays the error “The domain of Expense site ‘x’ has a different base currency than the base currency of current domain,” when a user opens another menu and changes to a site with a different base currency and then switches back to the requisition header and saves. Previously, an error was displayed.
	EAMNETS-1004	The PO Header Status check job program, Notification Email, now displays “No record found from PO Header Status Check” in the subject line when the job program runs without ordered PO records. Previously, the subject line displayed “The following PO’s are Open, but all lines appear closed.”
	EAMNETS-1018	Requisition now correctly displays the order cost value when it has been created from the Stores Requisition Lists browse and the vendor has a valid price schedule defined in the Vendor Parts screen. Previously, the price was not picked from the vendor’s price schedule.
	EAMNETS-1059	Requisition Email now displays the correct requestor name when the due date on a requisition is modified. Previously, Requisition Email displayed the requestor code.
	EAMNETS-1070	A requisition line no longer creates a stores requisition, correctly updates the Contract and Total planned expense in Project Cost Analysis, and correctly updates the Planned Internal cost in the Project Cost tab when auto-issuing a non-stock part without a contractor to a work order. Previously, a stores requisition was created and incorrect values were updated in Project Cost Analysis and in the Project Cost tab.
	EAMNETS-1090	Requisition Document Print now displays account/sub account/cost center information from the requisition line. Previously, Requisition Document Print displayed the information from the requisition header.
	EAMNETS-1095	Requisitions/Purchase Order now correctly sends an e-mail notification when the Vendor No field in Requisition/Purchase Order is changed and the Email Requestor? flags for the Requisition/Vendor No field on the Reroute/Notify Fields screen are set to Yes. Previously, irrelevant e-mails were sent.
	EAMNETS-1097	The Purchase Orders browse now correctly reroutes mail notifications to the Requester and Notify users when the PO status changes to Canceled/Closed. Previously, no notification was sent.
	EAMNETS-1100	The Purchase Orders browse now correctly updates all selected POs with status O when the Global Edit action is performed. Previously, some POs were not updated.
	EAMNETS-1103	The requisition line now displays correct tax details for the requisition header when the vendor is not taxable. Previously, the requisition line displayed incorrect tax details.
	EAMNETS-1120	The Requisition Routing Detail screen now displays a confirmation message when the red X button is clicked after clicking Approve. Previously, requisitions were approved without confirmation.

Table 4 Fixes and Enhancements for EAM 2016 (14 of 18)

Component	QAD Issue	Summary
	EAMNETS-1122	The Requisitions browse no longer allows users to enter a vendor number that is more than eight characters long. Previously, longer vendor numbers were allowed.
	EAMNETS-1129	The Posted GL Transaction browse now displays correct tax transactions for purchase order returns when the costing method is weighted average. Previously, the browse displayed incorrect tax transaction details.
	EAMNETS-1153	Vendor Download no longer sets the Send Cons ERP? flag to Yes in the Codes tab of the Vendor browse when a vendor is downloaded from ERP. Previously, the field was set to Yes.
	EAMNETS-1156	Purchase Order now displays the message “Change Notify on the attached requisition?” when a user updates the Notify field on Purchase Orders. If the user clicks Yes, the Notify information on the requisition header and lines is also updated. Previously, no message was displayed.
	EAMNETS-1178	The Purchase Orders browse Return to Vendor action now correctly processes a Return To Vendor transaction when the UOM Conversion value is changed after a PO is received. Previously, the browse displayed the error “Return Qty cannot exceed On Hand or Qty Received.”
	EAMNETS-1194	The requisition header and line now display the correct tax details when a requisition is created from inventory or stores requisition lists. Previously, incorrect tax details were displayed.
	EAMNETS-1233	The Purchase Orders browse Return to Vendor action now correctly updates the Qty Received at PO Lines when the order UOM is different from the issue UOM. Previously, Qty Received was updated incorrectly.
	EAMNETS-1240	Returns of auto issue items no longer create a duplicate date stamp in the inventory history table (parts_status).
	EAMNETS-1243	The Purchase Orders browse Return to Vendor Transaction action no longer creates rounding errors at Posted GL Transactions when the order cost of a PO contains a value with more than two decimals. Previously, rounding errors were created.
	EAMNETS-1300	You can now make the following fields mandatory for a requisition header on save: Acct No and Cost Center.
	EAMNETS-1310	The Global Edit action on the Requisitions browse now allows users to edit the fields Date Required, Date Due, Notify, Tax Class, Tax Usage, Tax Code, and Vendor No. Previously, only the Description and Requestor fields were available for Global Edit.
	EAMNETS-1312	A requisition line now correctly displays the Required Date field when a part number is entered. Previously, the Required Date field was blank.
	EAMNETS-1365	Receiver Matching Create (28.2.1, BAPMatching.Create) in Enterprise Financials now correctly matches receivers received from EAM when a PO is created in EAM using a non-base currency. Previously, the receiver could not be matched.
	EAMNETS-1372	You can now make the following fields mandatory for a requisition header on save: Notify, Requestor, Dept, Job No, and Sub Acct No. Previously, the fields were not available.
	EAMNETS-1406	The Purchase Order action PO Order no longer breaks a line in the middle of a word when sending the line to the ERP. Previously, when a long comment was entered in the PO text of a requisition line, the text was sometimes cut in the middle of a word when the line was sent to the ERP.
	EAMNETS-1413 EAMNETS-1572	The Vendor browse now has a Standard Clauses Global Change action, which allows the user to globally add or delete a standard clause in multiple vendors when a user selects multiple vendors and then selects the action. Previously, the action was not available.

Table 4 Fixes and Enhancements for EAM 2016 (15 of 18)

Component	QAD Issue	Summary
	EAMNETS-1431	The PO header and requisition document now display the correct Total Cost and Total Order Cost when a PO is created from a requisition with a non-base currency. Previously, the document displayed incorrect values.
	EAMNETS-1438	The Receiver report now displays the correct Ship Via and FOB from a PO when the vendor attached to the PO has different values for Ship Via and FOB. Previously, incorrect values were displayed.
	EAMNETS-1458	Purchase Order Line no longer changes the status of an ordered PO to Planned when a user modifies any field on the requisition line that is not sent to the ERP. Previously, the status was changed to Planned.
	EAMNETS-1464	A purchase order receipt now displays the correct value in the Trans Cur Amt field on Posted GL Transactions when a PO with a non-base vendor currency is received and the exchange rate difference is high. Previously, an incorrect value was displayed.
	EAMNETS-1471	When a requisition is created from inventory and the vendor price is used, the From Schedule check box in the requisition line is now automatically selected. Previously, the check box was blank.
	EAMNETS-1484	The requisition and PO headers now correctly display tax data from Ship-To when a user creates the requisition from the Stock Replenishment browse with the part and vendor set as taxable, but with no tax data. Previously, no tax data was displayed.
	EAMNETS-1504 EAMNETS-1655	A PO with a taxable requisition now displays the correct total amount in the header and Post GL transaction creates correct entries when the vendor has a non-base currency. Previously, an incorrect total amount and incorrect GL transaction entries were displayed.
	EAMNETS-1523	The PO browse Return to Vendor action now works correctly when a PO is received for non-stock parts. Previously, users saw the error message "Return Qty cannot exceed On Hand or Qty Received."
	EAMNETS-1531	A requisition line now sets the taxable status correctly from a part when a requisition is created using either Stock Run or the Requisitions action menu. Previously, an incorrect taxable status was set. A requisition header now sets the taxable status correctly from a vendor when a requisition is created using Stock Run with Ship To set as taxable. Previously, an incorrect taxable status was set.
	EAMNETS-1535	When a requisition is created by copying an existing requisition, the new requisition line now displays the correct requestor, pulled from the requisition header. If the requestor is not defined in the header, the current user defaults into the header. Previously, the employee number of the current user always defaulted into the header.
	EAMNETS-1544	Requisition routing now correctly routes a requisition to the proper user or quality approver when a user or a quality approver is substituted. Previously, the user appeared only once, even when that user was also a substitute. Previously, when a quality approver was substituted, the requisition was not routed to the substituted quality approver, but the requisition was authorized.
	EAMNETS-1545	When a requisition line is created by copying an existing requisition line, the new line now displays the correct requestor default from the requisition header or defaults from the current user's employee number, if the case header's requestor is blank. Previously, the requestor defaulted from the copied line.
	EAMNETS-1566	The Requisitions browse now changes the status of requisition lines from O to P when a field is modified on the requisition header that also exists in the ERP. Previously, the status did not change.
	EAMNETS-1584	The Requisitions browse now displays the PO Text value on the requisition line when a requisition is created with the Create Requisitions action on the Inventory browse. Previously, no PO text was displayed.

Table 4 Fixes and Enhancements for EAM 2016 (16 of 18)

Component	QAD Issue	Summary
	EAMNETS-1599	The Purchase Orders browse now displays the correct Total Tax field when an existing PO header is manually updated and the user clicks the No button for the “Change tax code of open requisitions to purchase order tax code?” dialog box. Previously, the Total Tax field did not update.
	EAMNETS-1619	Users can now delete the vendor-scheduled price of a vendor part when the regional language is set as French. Previously, users could not delete the vendor-scheduled price.
	EAMNETS-1621	The requisitions header now correctly updates Total Cost (B) when a canceled PO is reopened. Previously, the Total Cost (B) field displayed zero.
	EAMNETS-1623	The Requisitions browse now displays the correct menu label in the current user’s language when the user creates a requisition using the Create Requisition action in Inventory and a non-English language is assigned to the current user. Previously, “Requisition” was displayed. The Work Orders browse now displays the correct menu label in the current user’s language when a WO is created using the Issue action on the PM Templates browse and a non English language is assigned to the current user. Previously, “Work Orders” was displayed.
	EAMNETS-1639	The Receive action on the Purchase Orders browse now creates correct tax records for Enterprise Edition when Accrue Tax? and Accrue GL? are set to No. Previously, no tax records were created.
	EAMNETS-1643	The Receive action on the Purchase Orders browse now correctly receives a PO with a warning message when the overhead group used on a part is deleted from Overhead Groups. Previously, the quantity was not received.
	EAMNETS-1650	The Receive action for POs now displays a lookup for the Location field when a PO line is selected. Previously, the lookup button was not displayed.
	EAMNETS-1653	The Requisitions browse now displays the correct buyer when a requisition is created by selecting a stock part on Stores Requisition Lists. Previously, the buyer was blank. The Create Purchase Order action on the Requisition browse now displays the error message, “Buyer filed is not entered” when a requisition is created from a stores requisition list and a non-stock part is added on a requisition line. Previously, a PO was created without an error.
	EAMNETS-1668	The Purchase Orders browse now displays the correct actions based on a user’s role for the selected site when a PO is created from the Requisitions browse in the user’s non-primary site. Previously, actions were displayed based on the primary site for a user’s role.
	EAMNETS-1688	Requisition now considers the job allocated amount when the job is attached to the requisition. Previously, the job allocated amount was not considered.
	EAMNETS-1694	The Requisition Header now moves focus to the Contractor flag when the Auto-Issue flag is selected and a user presses the Tab key. Previously, the Contractor flag was skipped.
	EAMNETS-1713	The Blanket Orders print document now displays the BO Clause when it is added on the selected blanket order. Previously, BO Clause was not displayed.
	EAMNETS-1714	Users can now reopen a closed PO with the Reopen to Add Line action and reopen a canceled PO with the Reopen Canceled PO action. Previously, the Reopen action was available only for a canceled PO. The Requisitions browse now displays the action Reopen Canceled Requisition when a requisition is selected. Previously, the Reopen action was displayed.
	EAMNETS-1722	The Requisitions browse no longer allows users to approve requisitions when the current user is not in the Requisition Approval Group and the Approver apart from Appr Group flag is cleared on Sites. Previously, requisitions were approved.

Table 4 Fixes and Enhancements for EAM 2016 (17 of 18)

Component	QAD Issue	Summary
	EAMNETS-1734	The Vendor Return document now displays the correct Return Cost for PO when Return To Vendor consumes multiple FIFO stacks. Previously, the wrong cost was displayed.
	EAMNETS-1737	Requisition lines now correctly default the UOM from the order UOM set for that part in inventory. Previously, the UOM defaulted from the issue UOM.
	EAMNETS-1744	The Authorize action on Requisitions no longer allows a user with a high enough spending limit to approve a requisition if the user is not a part of the Requisition Approval Group or Routing. Previously, the Authorize action was allowed.
	EAMNETS-1745	The Requisition Print document now displays the Ship To and Bill To addresses when the Ship To and Bill To addresses are attached to a site or PO. Previously, the Ship To and Bill To addresses were not displayed.
	EAMNETS-1774	The Copy action in Requisitions no longer copies the original storage requisition list number to the new requisition's header and requisition lines. Previously, the stores requisition number from the original requisition was copied.
	EAMNETS-983	The Global Authorize action on the Requisition browse now displays an Info message type in the Global Message log when the displayed messages are informational. Previously, the browse displayed the message type Warning.
	EAMNETS-996	The Requisition Line browse now displays the correct order cost value from the price schedule list when the vendor has a valid price schedule defined in the Vendor Parts browse. Previously, the price was not picked from the vendor's price schedule.
Reporting/Filtering	EAMNETS-1186	The Requisition browse now correctly displays records when a filter is applied with the criteria "Add User ID is me." Previously, no records were displayed.
	EAMNETS-1041	The Work Order Document now prints the work order close time in the correct time format when the field is added to the report. Previously, the document displayed the incorrect time.
	EAMNETS-1132	The Pick Ticket report now displays the correct issues quantity when a rotatable part is issued. Previously, the issues quantity displayed was incorrect.
	EAMNETS-1269	The Purchase Order document now has Asset Acct and Asset CC columns that display values for a requisition line. Previously, these columns were not available.
	EAMNETS-1557	The Equipment Cost Summary report no longer displays Calculated Fields as an option in the filter criteria area of the report. Previously, this option was displayed.
	EAMNETS-1595	The Inventory Usage Analysis Report now displays positive Actual Lead Days when a purchase order receipt is returned and received again on another date. Previously, a negative Actual Lead Days value was displayed.
	EAMNETS-1611	The Simulate Update report now correctly displays simulated cost values to two decimal places. Previously, different decimal place values were displayed.
System	EAMNET-15411	The Next Sequence number logic used in many EAM records has been changed. The new functionality reduces sequence control record locking time by running an API on a separate process using a setting in the Job Control record.
System Administration	EAMNET-11627	(EAMNET-15044) There is a new batch routine for Rename Inventory.
	EAMNET-15163	(EAMNETS-954) EAM now prompts for a password change on the user's first login after the sysadm has reset the user's password. Previously, no prompt for a password change was displayed.
	EAMNET-15638	In addition to loading EAM users into EAM using the Refresh Users batch job, users can now download users manually from the User Download browse at System Administration Download User Download. The resulting browse displays the following data from the EE user definition: User ID, Name, LDAP enabled, Email Address, and Licensed. The In EAM column is selected if the EAM user data is updated in EAM Users.

Table 4 Fixes and Enhancements for EAM 2016 (18 of 18)

Component	QAD Issue	Summary
	EAMNET-15921	Mandatory fields for the maintenance and repair codes used in the Work Order Close browse can be specified for Finished WO and Close WO action updates. Different mandatory fields can be selected for Finished versus Closed. These mandatory fields are separate from the mandatory fields for Work Order.
	EAMNETS-1084	The Inventory browse no longer displays the buyer's record in the Buyer lookup when an associated employee record has been deleted from the Employee browse. In addition, the Employee browse prompts with a warning message if a user tries to delete an employee record that is linked to commodity codes or inventory. Previously, the Buyer lookup displayed deleted Employee records and no warning was displayed when an Employee record was deleted.
	EAMNETS-1302	The Global Currency Download action on the Currency Download browse now downloads the currency properly when the date format is different from the user's system and server. Previously, the currency was not downloaded.
	EAMNETS-1345	User Defined Fields now allows users to update fields Character 1 to Character 4 and no longer contains values for fields Characters 5 to Character 22 or Decimal 3 to Decimal 8 in all modules, except Equipment. Previously, the error message "Characters 5 to Character 22 and Decimal 3 to Decimal 8 are only available for Equipment" was displayed.
	EAMNETS-1507	GL Calendar Download no longer shuffles the record's position when a single currency record is downloaded. Previously, the record was repositioned. The affected functions are: Currency Download, GL Calendar Download, Bill To Download, EE Account Download, EE Cost Center Download, EE Sub Account Download, Project Download, Ship To Download, Terms Download, Vendor Download, and Standard Clauses Download
	EAMNETS-1511	The User/Roles browse now displays the correct records for a user with multiple roles in multiple sites when the total number of records in the User menu is more than 100. Previously, incorrect records were displayed.
	EAMNETS-1534	The Users Detail tab now displays the Req Proj Limit label for the Requisition Project Limit field. Previously, the Expense Site label was displayed.
	EAMNETS-1541	Vendor Download (EAM) now sorts vendor records by vendor name when a user clicks on the Name column header. Previously, no sorting occurred.
	EAMNETS-1613	Mandatory Fields now contain the field Work Performed when the Work Order Close module is selected in the upper browse. Previously, the Work Performed field was not available.
	EAMNET-15639	As an alternative to the batch job <code>refreshuser.p</code> , users can use the Download User and Global Download Users actions to manually update EAM users in the User Download browse. The In EAM column is updated to show which users are available in EAM. Users that are already in EAM have their details, such as names and e-mail addresses, refreshed. Users that are not actively licensed for EAM are not downloaded.