



QAD Enterprise Applications

Installation and Upgrade Guide QAD Enterprise Asset Management

70-3426-2017.1EAM
QAD Enterprise Asset Management 2017.1
April 2022

This document contains proprietary information that is protected by copyright and other intellectual property laws. No part of this document may be reproduced, translated, or modified without the prior written consent of QAD Inc. The information contained in this document is subject to change without notice.

QAD Inc. provides this material as is and makes no warranty of any kind, expressed or implied, including, but not limited to, the implied warranties of merchantability and fitness for a particular purpose. QAD Inc. shall not be liable for errors contained herein or for incidental or consequential damages (including lost profits) in connection with the furnishing, performance, or use of this material whether based on warranty, contract, or other legal theory.

This document contains trademarks owned by QAD Inc. and other companies.

Copyright © 2022 by QAD Inc.

EnterpriseAssetMgmt_IG_v2017_1EAM.pdf/b3s

QAD Inc.

100 Innovation Place
Santa Barbara, California 93108
Phone (805) 566-6000
<https://www.qad.com>

Contents

QAD EAM Installation and Upgrade Guide Change Summary	v
Chapter 1 Installation Overview	1
Installation Process Overview	2
System Overview	2
Sizing and Capacity Planning	2
General Prerequisites	3
Supported Versions	3
Software and Hardware Prerequisites	3
Chapter 2 Upgrading Enterprise Asset Management	5
Upgrading from EAM 11	6
Upgrading to EAM 2017.1	6
Upgrade Procedure	6
EAM Add-On Files	7
Chapter 3 Installing Enterprise Asset Management	9
Overview	10
Installing the Latest Version of YAB 1.6	10
Installing EAM 2017.1	10
Chapter 4 Post-installation Configuration	13
Set Up the ERP Login	14
Chapter 5 Custom Report Conversion	15
Overview	16
Requirements	16
Conversion	16
Appendix A Upgrading EAM Databases	21
Overview	22
Package Details	22
Preserving Custom Reports Layouts	22

Upgrade Instructions	23
Prepare the Databases for the Upgrade	23
Upgrade the Databases	24
Update Frozen Tables	30
Prepare dataacc Database	30
Update dataacc Database System Data	30
Load Updated Databases into Environment	31
Product Information Resources	33

QAD EAM Installation and Upgrade Guide Change Summary

The following table summarizes significant differences between this document and previous versions.

Date/Version	Description	Reference
July 2020/EAM 2017.1-Rev1	Updated the upgrade chapter to remove intermediate step of upgrading to EAM 2016 before installing 2017.1.	page 6
November 2019/EAM 2017.1	Added detailed upgrade chapter and appendix.	page 5
	Added chapter on custom report conversions.	page 15
September 2017/EAM 2017.1	Updated General Prerequisites, including the requirement of Python.	page 3
	Updated the upgrade instructions.	page 5
	Added steps for installing YAB 1.6.	page 10
March 2017/EAM 2017	Updated the information for upgrading earlier EAM installations to the new version.	--
October 2016/EAM 2016.1	Added requirement to install latest patch for 2016 EE before beginning EAM installation.	page 3
	Created a new chapter to explain the different scenarios for upgrading to EAM 2016.1.	--
	Added information on installing the latest version of YAB.	page 10
June 2016/EAM 2016-Rev3	Updated installations steps.	page 10
	Removed process to set up Progress Editor.	--
June 2016/EAM 2016-Rev2	Updated package requirements for download.	page 10
	Added instructions on required property used to identify ERP version.	page 10
	Added instructions on property used to install optional QMI data.	page 10
May 2016/EAM 2016-Rev1	Added requirement of QAD .NET UI 3.2 cumulative patch.	--
March 2016/EAM 2016 (v13)	Introduced installing EAM in a YAB environment.	--
	Removed all information pertaining to EAM installation and configuration using QDT.	--

Date/Version	Description	Reference
September 2015/EAM 2015-Rev 2 (v12.9)	Revised Figure 1.1	page 2
	Revised the Installation Process Overview section	page 2
	Revised the EAM Installation Options section	page 3
	Removed QXtend information from the EAM Add-on Files section	page 7
	Removed the Patch Installation section	page_12
	Removed the Configuring the Admin Environment section	page_22
	Revised the procedure in Interfacing to QAD SE and EE	page 32
	Revised step 32 of Manually Setting Up QAD EE Financial Components	page 35
	Removed the Applying the Fixed Asset Patch (EE Only) section	page_36
	Removed the Configure QXtend section and other QXtend-related content from Post-Installation Configuration	--
April 2015/EAM 2015-Rev 1 (v12.9)	Revised Figure 1.1 and the text in the Installation Process Overview	page 2
	Revised Database Server Requirements to include 2015 EE	page 6
	Revised Application Server Requirements to include 2015 EE	page 7
	Revised Initiating the Installation	page 17, page 18
April 2015/EAM 2015 (v12.9)	Rebranded for EAM 2015 (v12.9)	---
	Numerous editorial changes	---
	Added Korn Shell section	page 4
	Revised the AIX requirements information	page 5
	Deleted Red Hat 6 section and merged content with the new Korn Shell section	page 5
	Updated Database Server Requirements	page 6
	Updated Application Server Requirements	page 7
	Updated Web Server Requirements	page 7
	Renamed the “Installing the Media to Linux/UNIX” section as “Initiating the Installation”	page 16
	Revised Initiating the Installation	page 16
	Documented Select Product Version window	page 17
	Revised Interfacing to QAD SE and EE	page 31
	Updated Configure EAM Application Screen	page 31
	Updated Figure 3.15 Edit Compiler Settings	page 32
Added step 38 and Figure 3.19 for disable AIA connection	page 34	

Date/Version	Description	Reference
September 2014/EAM 12.8	Numerous editorial changes	---
	Reorganized the guide to remove the default installation option and to document a single installation work flow that includes interfacing to QAD EE and SE	---
	Revised Installation Process Overview	page 2
	Revised Installing the QAD Deployment Toolkit	page 9
	Removed the Installing a Complete EAM Configuration chapter	---
	Changed the name of the Installing a Custom EAM Configuration chapter to EAM Configuration	page 21
	Revised EAM Configuration	page 21
March 2014/EAM 12.7	Added section to set up Progress editor	---
	Added information on starting QDT in AIX environments	page 5
	Updated supported Java versions	page 6 page 7 page 7
	Updated the Tomcat Web server information	page 7
November 2013/EAM 12.6 Rev 1	Added note regarding users upgrading from QAD SE to EE	page 4
October 2013/EAM 12.6	Revised QDT Installation	page 10
	Moved Installing Media to Linux to Ch. 2	page 16
	Revised Custom EAM Configuration	page_25
	Added the Configure QXtend procedure	page_46
April 2013/EAM 12.5.2	Rebranded 12.5.2	--
	Added Upgrading From a Previous Version of EAM section	page 7
December 2012/EAM 12.5.1	Updated EAM 11 to EAM 12 conversion information.	page 7
September 2012/EAM 12.5.1	Updated Progress database server software requirements	page 6
	Updated Fixed Asset patch procedure.	page_36
April 2012/EAM 12.5	Removed obsolete language-specific scripts information.	--
	Removed editing language details information.	--
September 2011/EAM 12.4	Updated installation media add-on files information.	page 7
	Added fixed asset patch installation procedure detailing upgrade procedures. Updated other version-specific information.	page_36



Installation Overview

This chapter describes the Enterprise Asset Management installation process and provides system requirements and software prerequisites.

Installation Process Overview 2

System Overview 2

Sizing and Capacity Planning 2

General Prerequisites 3

Software and Hardware Prerequisites 3

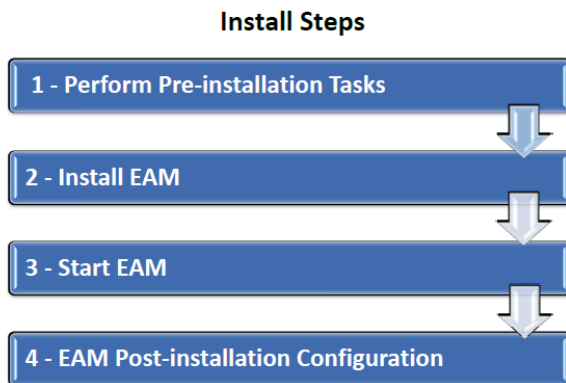
Installation Process Overview

Before installing EAM, you must first install and configure QAD Enterprise Edition. QAD Enterprise Edition is installed using the QAD Enterprise Edition installer and is managed using the QAD YAB client. YAB is a deployment and management toolset that covers all products installed into an Enterprise Edition environment.

See *QAD Enterprise Edition Installation Guide* for more information about using YAB.

The following figure represents the overall flow of the installation process.

Fig. 1.1
QAD EAM Installation Process



The following steps describe the EAM installation process.

- 1 Determine if your system hardware, software, and configuration meet the requirements for EAM installation. Then set up your system according to the requirements defined in this chapter or with the assistance of QAD Services.
- 2 Download or mount the install files and run the YAB install command.
YAB installs and configures the selected components using default configuration values generated during the auto-discovery process or using your custom configuration values.
- 3 Start your new EAM installation and log in.
- 4 Perform post-installation EAM configuration.

System Overview

An EAM system consists of server components installed on a UNIX host and the QAD .NET UI client installed on multiple Windows computers.

Sizing and Capacity Planning

The server contains QAD EAM and Progress server software, as well as your production data. Before starting an installation, estimate the eventual size of your production database and the demands on the different database components. This information helps you to lay out your disks.

EAM requires a minimum of 12 GB to install and configure the product for one environment. This memory requirement does not include the additional space needed for multiple languages or major changes to the production databases.

For assistance with hardware sizing and capacity requirements planning, contact QAD Services.

General Prerequisites

The following general prerequisites apply:

- QAD Enterprise Edition 2016 or higher, including the latest cumulative patch.
Note EAM will not install successfully with Enterprise Edition 2016 without at least patch 2016.0.16.397 installed for QAD 2016 EE. You can check your version by running `yab info` and reviewing the version of `mfg-ee2016-patch`. If you do not have at least 2016.0.16.397, download the patch from the QAD Store and install before continuing.
- The latest QAD .NET UI cumulative patch for your QAD Enterprise Applications version.
- YAB 1.6.
- Python 2, version 2.4 or higher.
- The QAD EAM media or product download from the QAD Store.
- A valid product license key.
- An accomplished UNIX and Progress database administrator who can manage Progress client processes.
- A 100 Mbps or faster network.
- Easy access to this guide.

Supported Versions

You can install QAD EAM 2017.1 with QAD Enterprise Edition 2016 and higher.

Important If you are upgrading from QAD SE to EE, there is currently no migration tool for EAM. For further assistance, contact QAD Support.

Software and Hardware Prerequisites

For the current requirements information, refer to the Product Compatibility Guide in the QAD Store at:

<http://store.qad.com/content/compatibility-guide>

Refer to the Progress documentation for the complete requirements for Progress components. When installing Progress components, always select a Complete installation, not a Typical or Custom installation. For information about Enterprise Edition Progress installation, refer to the *QAD Enterprise Edition Installation Guide*.

4 QAD Enterprise Asset Management Installation and Upgrade Guide



Upgrading Enterprise Asset Management

This chapter describes upgrading your current Enterprise Asset Management instance to EAM 2017.1.

Upgrading from EAM 11 6

Upgrading to EAM 2017.1 6

EAM Add-On Files 7

Upgrading from EAM 11

Upgrading an EAM 11.x installation requires a conversion utility. Contact QAD Support to obtain the latest version of the utility and refer to the *Enterprise Asset Management Conversion Guide: EAM 11 to EAM 2015*.

Upgrading to EAM 2017.1

This section describes the upgrade process for moving from an EAM 12.4.1 installation to EAM 2017.1.

Note This section explains upgrades from 12.4.1 through 12.9. If you are upgrading from an earlier version of EAM 12, contact QAD Support for assistance.

Upgrade Procedure

- 1 Install a QAD Enterprise Edition version that is compatible with EAM 2017.1. The supported versions are EE 2016 and higher. See the *QAD Enterprise Edition Installation Guide* for detailed instructions.

Configure Enterprise Edition with the necessary data in order to have a working QAD .NET UI client.

- 2 Back up the `eam` and `dataacc` databases into a temporary location.

Note Always start a database backup with a blank, temporary database.

- 3 Install EAM 2017.1 into the same installation directory you used for QAD Enterprise Edition. See “Installing EAM 2017.1” on page 10 for detailed instructions.

- 4 Upgrade your temporary databases using the utilities provided on the EAM 2017.1 installation media.

a Find and unzip the `add_ons/v13upgrade/13.3.0_Upgrade.zip` file. The utilities are located in `../13/x/packages/eam/13/x/x/x/add-ons`.

b Follow the upgrade instructions in Appendix A on page 21, including restoring the database backups as described in “Load Updated Databases into Environment” on page 31.

- 5 In the `configuration.properties` file, set the following parameter:

```
packages.eam.priorversion=13.0.0.5
```

- 6 Update the environment with `yab update`.

- 7 Set up the Progress Editor in EAM. Open the System Control browse and select Telnet Options from the Action menu. Review the settings for accuracy.



Fig. 2.1
Telnet Options

Host Name	vmlam00012.qad.com	Login ID	mfg
Host OS	UNIX	Password:	***
Port No	22	Domain:	qad.com
Script Timeout	240	Idle Timeout	240
Script 1 Pattern	\$	Script 1 Value	build/work/generated/eam-connected.pf
Script 2 Pattern	\$	Script 2 Value	
Script 3 Pattern	continue.	Script 3 Value	
Script 4 Pattern		Script 4 Value	
Min Connections	0	Max Connections	0

- a The Login ID and Password should be set for your database server.
 - b The Script 1 Pattern value should be the Linux server prompt sign for your system. For example, \$ or >.
 - c Review the contents of the Script 1 Value and Script 2 Value fields. The Script 1 Value should contain a path to a .pf file that launches Progress Editor. During the upgrade process, the correct path sometimes appears in the Script 2 Value field instead of Script 1 Value. In that instance, copy the Script 2 Value and paste it into the Script 1 Value field. Then, delete the contents of the Script 2 Value field and leave it blank.
- 8** Revisit role setup. EAM 12.9 introduced a significant update to the menu system and many roles will no longer have access to certain menu entries. Also, many new options have been added to the security roles. You should thoroughly review your existing roles to verify that they are set properly.

EAM Add-On Files

To complete your installation, you may need the `v13upgrade` subdirectory in the installation media `add_ons` directory. The `v13upgrade` subdirectory contains instructions and tools to help upgrade older versions of EAM.



Installing Enterprise Asset Management

Enterprise Asset Management is installed from the command line with a simple command related to Enterprise Edition administration.

Overview 10

Installing the Latest Version of YAB 1.6 10

Installing EAM 2017.1 10

Overview

In a YAB environment, QAD software is organized into packages. EAM installation requires the latest version of YAB and the eam package.

Installing the Latest Version of YAB 1.6

If you are installing EAM into QAD Enterprise Edition 2016, follow these steps to install YAB 1.6. If you are installing into a later release of QAD Enterprise Edition, these steps are already complete.

- 1 Open the `build/config/configuration.properties` file and enter:


```
python.executor=<path to python interpreter>
```
- 2 Download the latest `yab-ee-image-VERSION.zip` file from QAD Release Fulfillment and make the file available on the server.
- 3 Run `yab install yab-ee-image-VERSION.zip`.

Installing EAM 2017.1

Follow these steps to install EAM 2017.1.

- 1 Download the EAM zip file from QAD Release Fulfillment. Place the file in a convenient location, for example, the `/qad/install` directory on the server where EAM will be installed.
- 2 Navigate to the directory where Enterprise Edition is installed.
- 3 Update your YAB configuration with specific settings for your install.
 - a `vi build/config/configuration.properties`
 - b Set the property to identify your ERP version. For Enterprise Edition 2016 and later, this value equals `2016QRA`, as in the following example:


```
qadeam.erp-version-dir-name=2016QRA
```
 - c Optionally, set the property to install QMI data.

Note Only set this property for demo or training purposes. Do not set this property when installing into a production environment.

- 4 Run the `yab install` command, including the full path to the EAM package zip file.

Important This will perform a full YAB update, during which the environment will be fully restarted.

Example

```
$ yab install /eam-yab-compatible-VERSION.zip
```

- 5 The system performs additional EAM installation steps.

Note If the installation fails, check the `./build/logs/yab.log` file.



Once installed, the `yab info` command should include, among others, the following two packages:

- eam
- yab-eam

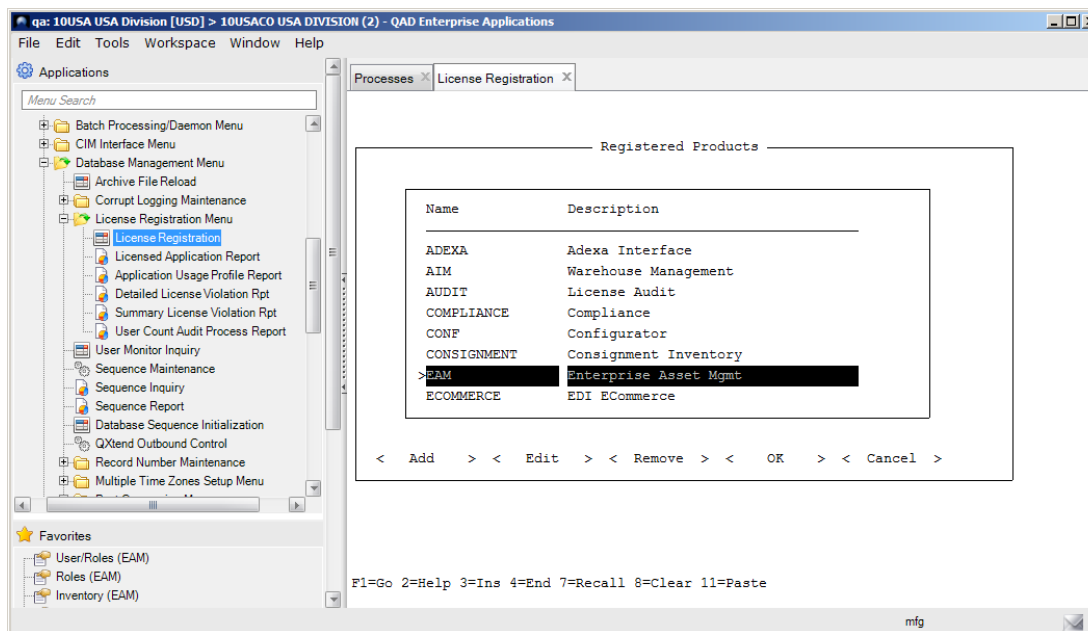
The installation creates the following directory in the local catalog:

```
./build/catalog/packages/eam
```

This contains the EAM source code as well as dmp standard files. The EAM compiled code is stored under `./dist/eam`.

- 6 Log in to QAD Enterprise Applications. Enter your EAM license code in License Registration (36.16.10.1).

Fig. 3.1
License Code Registration





Post-installation Configuration

This section describes what you must do after completing an installation to ensure that the application is ready for use.

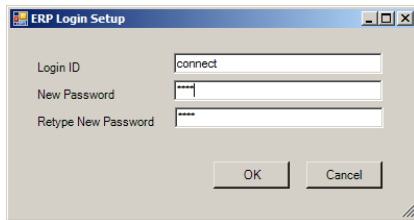
Set Up the ERP Login 14

Set Up the ERP Login

EAM requires a login to access the QAD modules for updates, such as General Ledger transactions.

- 1 In EAM, open the System Control browse at System Administration|System Control (EAM) and select ERP Login Setup from the Action menu.

Fig. 4.1.
ERP Login Setup



The screenshot shows a standard Windows-style dialog box titled "ERP Login Setup". It contains three text input fields. The first field, labeled "Login ID", contains the text "connect". The second field, labeled "New Password", and the third field, labeled "Retype New Password", both contain four asterisks (****). At the bottom of the dialog, there are two buttons: "OK" and "Cancel".

- 2 Enter a valid Login ID and Password for QAD.
Note This setup window also can be used to update existing settings.
- 3 Click OK.

Custom Report Conversion

This chapter describes the conversion process required to convert the reporting framework for environments prior to EAM 2016.1 to the latest reporting framework.

Overview 16

Requirements 16

Conversion 16

Overview

EAM 2016.1 contains a reporting framework that requires you to convert your customized report templates after the upgrade is complete. Knowledgebase article AB-04621, [EAM 2016.1 Report Conversion Utility and Work Instructions](#), links to the required conversion utilities.

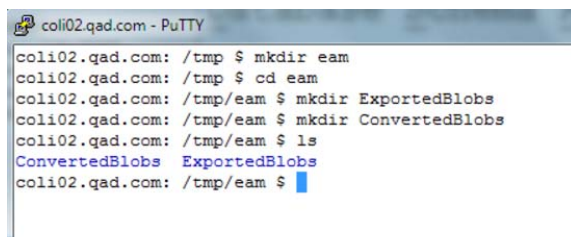
Requirements

- A working, upgraded EAM environment that is at least version 2016.1
- EAM's Progress Editor [Enterprise Asset Management | System Administration | Progress Editor (EAM)]
- Telnet or SSH access to the database server and the ability to create folders on the file system
- The utilities required for the report conversion, downloaded from QAD at <https://knowledgebase.qad.com/kmp/article/AB-04621>

Conversion

- 1 Make a list of all report templates that have been modified, including the template overlays that may contain your organization's logo.
- 2 Back up the `dataacc` database.
- 3 Create temporary folders on the server.
 - a Using a telnet or SSH client, log in to the database server.
 - b Create a temporary folder to hold the exported data. For example, `/tmp/eam`.
 - c Create a subfolder for exported data. For example, `/tmp/eam/ExportedBlobs`.
 - d Create a subfolder for converted data. For example, `/tmp/eam/ConvertedBlobs`.

Fig. 1
Create Temporary Folders



```

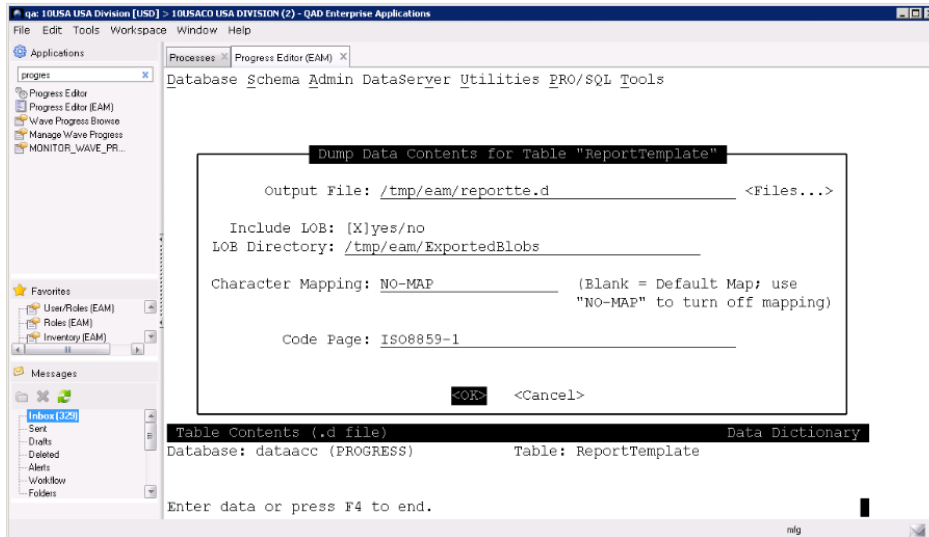
colli02.qad.com - PuTTY
colli02.qad.com: /tmp $ mkdir eam
colli02.qad.com: /tmp $ cd eam
colli02.qad.com: /tmp/eam $ mkdir ExportedBlobs
colli02.qad.com: /tmp/eam $ mkdir ConvertedBlobs
colli02.qad.com: /tmp/eam $ ls
ConvertedBlobs  ExportedBlobs
colli02.qad.com: /tmp/eam $ █
  
```

Note Do not exit the telnet or SSH client.

- 4 In the QAD .NET UI, open Progress Editor (EAM) and export EAM's report template data.
 - a Access Tools | Data Dictionary.
 - b Access Database | Select Working Database and select `dataacc`.
 - c Access Admin | Dump Data and Definitions | Table Contents (.d file) and select the ReportTemplate table.

- d Verify that there is a > next to the ReportTemplate table name, then tab to <OK> and press Enter.

Fig. 2
Dump Data Contents



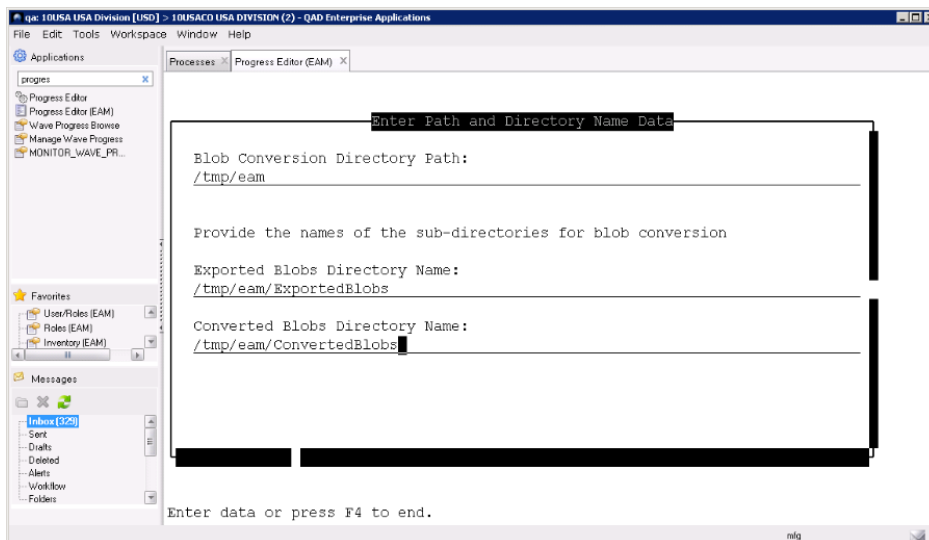
- e When the dump is complete, press the space bar to continue. Then, select Database | Exit.

Note Do not close the Progress Editor.

5 Run the conversion script.

- a In the Progress Editor, select File | Open and open the BlobConversion.p program that you downloaded from QAD.
- b Select Compile | Run.
- c Enter the temporary folders that you created in step 3 on page 16.

Fig. 3
Enter Temporary Folders



18 QAD Enterprise Asset Management Installation and Upgrade Guide

- d Press F1 to start the conversion process.
- e When the process completes, select File | Close.

Note Do not close the Progress Editor.

6 Review the BlobConversion.log file.

- a Using the telnet or SSH client, search the file system for BlobConversion.log.
- b Review BlobConversion.log for errors. Search for “namespace that isn’t handled.” If you find errors, do not continue and contact QAD Support or R&D immediately.

7 Prepare the environment to import the converted reports.

- a In the Progress Editor, select File | Open and open the RemoveAllReportTemplates.p program that you downloaded from QAD.
- b Select Compile | Run.
- c When the program is complete, select File | Close.

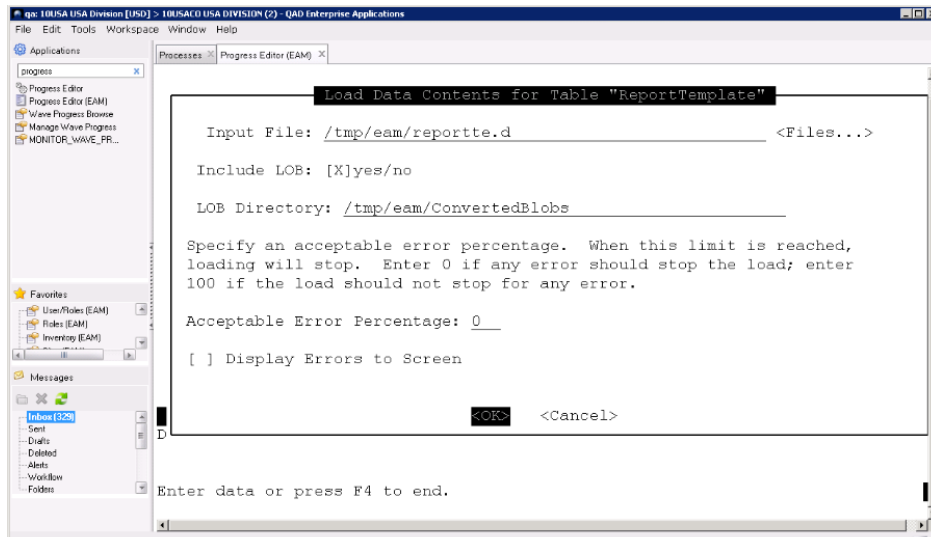
Note Do not close the Progress Editor.

8 Import the converted report templates.

- a Access Tools | Data Dictionary.
- b Access Database | Select Working Database and select dataacc.
- c Access Admin | Load Data and Definitions | Table Contents (.d file). Select the ReportTemplate table.
- d Verify that there is a > next to the ReportTemplate table name, then tab to <OK> and press Enter.
- e In the Load Data Contents for Table “ReportTemplate” frame, tab into the LOB directory and enter the converted data folder; for example, /tmp/eam/ConvertedBlobs. Then, tab to <OK> and press Enter.



Fig. 4
Load Data Contents



- f** When the load is complete, press the space bar to continue. Then, select Database | Exit.
- 9** Finalize the conversion of the customized report templates.
 - a** In the QAD .NET UI, open Enterprise Asset Management | System Administration | Report Designer (EAM).
 - b** Using the list from step 1 on page 16, highlight an overlay or template in the left panel of the Report Designer. Double-click to open it.
 - c** Choose File | Save and then File | Close.
 - d** Open, save, and close every overlay and template in the list.



Upgrading EAM Databases

This appendix describes the required steps to upgrade EAM 12.4.1 and higher production databases to EAM 2017.1 (13.3).

Overview 22

Preserving Custom Reports Layouts 22

Upgrade Instructions 23

Overview

This appendix describes the process required to upgrade from an EAM 12.4.1 release to EAM 2017.1. If you are upgrading from an earlier version of EAM 12, contact QAD Support for assistance. You should read through the entire appendix before initiating the database upgrade.

Package Details

The files in the EAM package upgrade EAM databases, beginning with version 12.4.1.0. Do not apply this upgrade to versions earlier than 12.4.1.0. If you are installing from an earlier version of EAM, see <https://knowledgebase.qad.com/kmp/article/AA-78989> or contact QAD Support and request the “EAM Upgrade Path.pdf.” The Knowledgebase article and PDF contain a list of the incremental updates required when moving from a lower version of EAM.

Preserving Custom Reports Layouts

This upgrade completely refreshes the report repository. If you have customized reports or prints, reapply your changes after the upgrade. Inform your system administrators before performing this upgrade. Alternatively, a tool is available from QAD’s EAM Support group that helps you to export report layouts before the upgrade begins and to import them again after the upgrade is complete.

The following report templates have been updated. The most recent update is indicated with each report.

- Equipment BOM Consolidated (EAM 2016)
- Inventory Count Sheet (EAM 2016)
- PM Labor Hours Forecast (EAM 2016)
- Purchase Order Document (EAM 2016)
- Receiver Document (EAM 2016)
- Issue to Cost Center and Account (EAM 2016)
- Vendor Return Document (EAM 2016)
- Project Cost Analysis (EAM 2016)
- Open POs Not Yet Received (EAM 2016)
- (Physical Inventory) Simulate Update template (12.9.2)
- Pick Ticket template (12.9.2)
- Purchase Order template (12.9.2)
- Open POs Not Yet Received template (12.9.2)
- WO Instruction List template (12.9.2)
- WO Document template (12.9.1)
- WO Instruction List template (12.9.1)
- Vendor Returns template (12.9.1)
- PO Header Lines template (12.9.1)
- Receiver document template (12.9.1)



- Work Order Document (12.8.0.2)
- Consignment Usage Transaction by Vendor report (12.8.0.2)
- Request for Quote and Quote Lines templates (12.8.0.1)
- WO Parts List template (12.8.0.1)
- WO Instruction List template (12.8.0.1)
- Vendor Returns (12.8.0.1)
- Purchase Order Lines template (12.8.0.1)
- Physical Inventory Count Sheet (12.8.0.1)
- Requisition Document (12.7.0.2)
- Project Cost Analysis template (12.7.0.2)
- Master Instructions Lists with Equipment template (12.7.0.2)
- Purchase Order Document (12.7.0.2)
- Project Activity Summary (12.7.0.1)
- PO Document Print (12.7.0)
- Open POs Not Yet Received (12.6.0.1)
- Equipment Downtime Summary (12.6.0.1)
- Request for Quote (12.5.2.1)
- Blanket Order Release (12.5.1.2)
- Equipment Cost Summary (12.4.2.3)
- Top Equipment Cost (12.4.2.3)
- Equipment Cost Summary by CC (12.4.2.3)
- Cost Analysis by Cost Center (12.4.2.3)
- Issue to Cost Center and Account (12.4.2.3)
- Equipment Cost Analysis (12.4.2.3)
- Consignment Report (12.4.2.1)
- Simulate Update (12.4.1.1)
- Transfer Report (12.4.1.1)

Upgrade Instructions

Prepare the Databases for the Upgrade

- 1 Back up the server components.
 - a Check that the EAM Job Controller has been stopped.
 - b Shut down the EAM AppServer.
 - c Back up the `eam` and `dataacc` databases.

Note When connecting to the EAM database, the logical name must be set to `MLS`. The PF file created during the install should have an entry that contains the `-ld mls` setting. If you are connecting manually, enter `mls` in the Logical Name field.

- 2 Update frozen tables in the `eam` and `dataacc` databases. Run the `unfreeze.p` program that is connected to each database. You can find the file in `<upgrade>/server/DB/incremental/`

Upgrade the Databases

Use the following table to determine the proper release with which to begin your upgrade:

Upgrading From	Start with Release
12.4.1.0 through 12.4.1.4	12.4.2.0 on page 24
12.4.2.0 through 12.4.4.1	12.5.0 on page 25
12.5.0.x	12.5.1 on page 25
12.5.1.0 through 12.5.2.1	12.5.2.2 on page 26
12.5.2.2 through 12.5.2.4	12.6.0 on page 26
12.6.0 through 12.6.0.4	12.7.0 and 12.7.0.1 on page 27
12.7.0 through 12.7.0.1	12.7.0.2 on page 28
12.7.0.2	12.7.0.3 on page 28
12.7.0.3	12.7.0.4 on page 28
12.7.0.4	12.8.0 on page 28
12.8.0	12.8.0.1 on page 28
12.8.0.1	12.8.0.2 on page 29
12.8.0.2	12.8.0.3 on page 29
12.8.0.3	12.8.0.4 on page 29
12.8.0.4	12.9.0 on page 29
12.9.0	12.9.1 on page 29
12.9.1	12.9.2 on page 30
12.9.2	12.9.3 and Higher on page 30

Important Ensure that you begin the upgrade process on the correct step. Use the table to determine your starting point and then continue through each step until you complete “Load Updated Databases into Environment” on page 31.

12.4.2.0

Update the `dataacc` database schema by applying the schema changes found in `<upgrade>/server/DB/incremental/12.4.2.0.Load_12_4_2dataacc.df`.

12.5.0

Update the `dataacc` and `eam` database schema and then upgrade the databases. All required files are located in `<upgrade>/server/DB/incremental/12.5.0`.

- 1 Update the `dataacc` database schema by loading `12_5_0dataacc.df`.
- 2 Update the `eam` database schema by loading `12_5_0eam.df`.
- 3 Upgrade the `dataacc` and `eam` databases. Run the following programs while connected to both databases:

- `AddUserDefinedMailFields.p`
- `BOUserDefMail.p`
- `CIMLoadRegistryFix.p`
- `CreatePOAuthFields.p`
- `deletereqlinemailbe.p`
- `domain-curr.p`
- `EAMNET-3307.p`
- `EAMNET-3326.p`
- `EAMNET-4157.p`
- `EAMNET-4703.p`

The `EAMNET-4703.p` update creates a log file of job records that were marked as expense type jobs that have fixed asset records. Enter a location and log name when prompted.

- `incl_proj_default.p`
- `SetParentNo.p`
- `VendorCostLoad.p`
- `VendorCurrencyLoad.p`

12.5.1

Update the `eam` database schema, update the `dataacc` and `eam` databases, and then update the `eam` database's data. All required files are located in `<upgrade>/server/DB/incremental/12.5.1`.

- 1 Update the `eam` database schema by loading `12_5_1eam.df`.
- 2 Update the `dataacc` and `eam` databases. Run the following programs while connected to both databases:

- `blanketorderdelete.p`
- `EAMNET-3497.p`
- `EAMNET-3839.p`
- `EAMNET-4129.p`

`EAMNET-4129.p` should be run when integrated and connected with an Enterprise Edition database. Fixed asset records are created in EAM, based on records that exist only in EE.

- `EAMNET-4189.p`
- `UpdateAllProjAllocData.p`

- 3 Update the eam database's data by loading the .d files found in <upgrade>/server/DB/incremental/12.5.1.
 - Select the following two tables in dataacc:
 - MandatoryAvailField
 - MandatoryForm
 - Set the acceptable error percentage to 100%.
 - Do not select "Output Errors to Screen."

12.5.2.2

Update the schema for the dataacc and eam databases and then update the databases themselves. All required files are located in <upgrade>/server/DB/incremental/12.5.2.2.

- 1 Update the dataacc database schema by loading 12_5_2_2dataacc.df.
- 2 Update the eam database schema by loading 12_5_2_2eam.df.
- 3 Update the dataacc and eam databases. Run the following programs while connected to both databases:
 - EAMNET-5655.p
This updates the sequence of the requisition routing records. The log notes which records were updated and lists records that could not be updated. Enter a location and log name when prompted.
 - EAMNET-5686.p
This updates the Downtime field on work orders for the selected range. Enter a range of sites where equipment downtime is used.
Enter a range of WO numbers to be updated. For example, 1 to 99999999 for all work orders.
Enter a location and name where the log file can be written.

12.6.0

Update the schema for the dataacc and eam databases, update the databases themselves, and then update the eam database data. All required files are located in <upgrade>/server/DB/incremental/12.6.0.

- 1 Update the dataacc database schema by loading 12_6_0dataacc.df.
- 2 Update the eam database schema by loading 12_6_0eam.df.
- 3 Update the dataacc and eam databases. Run the following programs while connected to both databases:
 - EAMNET-4465.p
This program is for environments attached to either a QAD Standard Edition or Enterprise Edition database. Skip EAMNET-4465.p if you are running a standalone environment.
 - EAMNET-5700.p
 - EAMNET-5889.p
 - EAMNET-6327.p



- 4 Update the eam database's data by loading the .d files found in <upgrade>/server/DB/incremental/12.6.0.
 - Select the following tables in eam to load:
 - As_left
 - Mail_be
 - Mail_be_field
 - Pm_route_codes
 - Set the acceptable error percentage to 100%.
 - Do not select "Output Errors to Screen."

12.7.0 and 12.7.0.1

This step updates the databases first to 12.7.0 and then to 12.7.0.1. All required files for steps 1 and 2 are located in <upgrade>/server/DB/incremental/12.7.0. The file for step 3 is in <upgrade>/server/DB/incremental/12.7.0.1.

- 1 Update the eam database's schema by loading 12_7_0eam.dfb.
- 2 Update the dataacc and eam databases. Run the following programs connected to both databases:
 - EAMNET-2718.p
 - EAMNET-2897.p
 - EAMNET-5633a.p
 - EAMNET-5633b.p
 - EAMNET-5895a.p
 - EAMNET-5895b.p
 - EAMNET-5958.p
 - EAMNET-7223.p
 - EAMNET-7352a.p
 - EAMNET-7642.p
 - EAMNET-8401.p
 - EAMNET-9078.p
 - EAMNET-9357.p
 - EAMNET-9742.p
 - EAMNET-9825.p
 - poreqrevcreate.p
 - revfieldassign.p
- 3 Update the dataacc and eam databases. Run Update_12.7.0.1.p, which is located in <upgrade>/server/DB/incremental/12.7.0.1.

12.7.0.2

Update the eam database schema and then update the eam and dataacc databases themselves. All required files are located in <upgrade>/server/DB/incremental/12.7.0.2.

- 1 Update the eam database schema by loading 12_7_0_2eam.df.
- 2 Update the dataacc and eam databases. Run Update_12.7.0.2.p while connected to both databases.

12.7.0.3

Update the eam database schema and then update the eam and dataacc databases themselves. All required files are located in <upgrade>/server/DB/incremental/12.7.0.3.

- 1 Update the eam database schema by loading 12_7_0_3eam.df.
- 2 Update the dataacc and eam databases. Run Update_12.7.0.3.p while connected to both databases.

12.7.0.4

Update the dataacc and eam databases. The required file is located in <upgrade>/server/DB/incremental/12.7.0.4. Run Update_12.7.0.4.p while connected to both databases.

12.8.0

Update the eam database schema and then update the eam and dataacc databases themselves. All required files are located in <upgrade>/server/DB/incremental/12.8.0.

- 1 Update the eam database schema by loading 12_8_0eam.df.
- 2 Update the dataacc and eam databases. Run Update_12.8.0.0.p while connected to both databases.

12.8.0.1

Update the eam database schema and then update the eam and dataacc databases themselves. All required files are located in <upgrade>/server/DB/incremental/12.8.0.1.

- 1 Update the eam database schema.

Note The schema change 12_8_0_1eam-1.df was released during the 12.7.0.3 patch update. Do not load the first step, step a, if you applied this schema change during the 12.7.0.3 update on page 28 of these instructions or if you are updating a 12.7 environment that is at patch 3 or above.

- a Load 12_8_0_1eam-1.df only if patch 12.7.0.3 was not previously applied.
- b Load 12_8_0_1eam-2.df. These changes are needed for environments lower than patch 2 for 12.8.0.



- 2 Update the `dataacc` and `eam` databases. Run `Update_12.8.0.1.p` while connected to both databases.

12.8.0.2

Update the `dataacc` and `eam` databases. Run `Update_12.8.0.2.p` while connected to both databases. The file is located in `<upgrade>/server/DB/incremental/12.8.0.2`.

12.8.0.3

Update the `eam` database schema and then update the `eam` and `dataacc` databases themselves. All required files are located in `<upgrade>/server/DB/incremental/12.8.0.3`.

- 1 Update the `eam` database schema by loading `12_8_0_3eam.df`.
- 2 Update the `dataacc` and `eam` databases. Run `Update_12.8.0.3.p` while connected to both databases.

12.8.0.4

Update the `dataacc` and `eam` databases. Run `Update_12.8.0.4.p` while connected to both databases. The file is located in `<upgrade>/server/DB/incremental/12.8.0.4`.

12.9.0

Update the `dataacc` and `eam` databases and then update the `dataacc` and `eam` database schemas. All required files are located in `<upgrade>/server/DB/incremental/12.9.0`.

- 1 Update the `dataacc` and `eam` databases. Run `1-DuplicateCleanUp.p` while connected to both databases.
- 2 Update the `dataacc` database schema by loading `12_9_0dataacc.df`.
- 3 Update the `eam` database schema by loading `12_9_0eam.df`.
- 4 Update the `dataacc` and `eam` databases. Run the following programs while connected to both databases.
 - a `Update_12.9.0.0.p`
 - b `Fix_129_MenuRole.p`

12.9.1

Update the `eam` database schema and then update the `eam` and `dataacc` databases themselves. All required files are located in `<upgrade>/server/DB/incremental/12.9.1`.

- 1 Update the `eam` schema only if patch 12.8.0.3 was not previously applied. Load `eam.df`.

Important The schema change `eam.df` in step 1 was released during the 12.8.0.3 patch update and could have already been applied to the environment. Do not load `eam.df` if you applied this schema change during the 12.8.0.3 update on page 29 of these instructions or if you are updating a 12.9.1.0 environment.

- 2 Upgrade the `dataacc` and `eam` databases. Run `update.p` while connected to both databases.

12.9.2

Upgrade the `dataacc` and `eam` databases using the file located in `<upgrade>/server/DB/incremental/12.9.2`. Run `update.p` while connected to both databases.

12.9.3 and Higher

All systems require this step, which applies changes for EAM 2016/13.0. All required files are located in `<upgrade>/server/DB/incremental/13.0.0`.

- 1 Update the `dataacc` database schema by loading `13_0_0dataacc.df`.
- 2 Update the `eam` database schema by loading `13_0_0eam.df`.
- 3 Upgrade the `dataacc` and `eam` databases. Run `update.p` while connected to both databases.

Update Frozen Tables

Update frozen tables in the `eam` and `dataacc` databases by running the following program connected to each database. Open `<upgrade>/server/DB/incremental` and run `freeze.p`.

Prepare dataacc Database

Prepare the `dataacc` database for upgrade. The data update program deletes non-custom data in tables, `FormField`, `FormGroup`, `FormTab`, `StringDef`, and `StringTrans`.

Using a Progress session that is connected to the `dataacc` database, open `<upgrade>/server/DB/dataacc` and run `dataupdate.p`

Update dataacc Database System Data

- 1 Load the `.d` files found in `<upgrade>/server/DB/dataacc`.
 - a Select all tables in `dataacc` to load.

Note A few will cause errors because there are no `.d` files to load. Others will cause errors due to duplicate records in the database. These errors are not a problem.
 - b Set acceptable error percentage to 100%.
 - c Do not select “Output Errors to Screen.”
 - d Define the “blob” folder: `<upgrade>/server/DB/dataacc/blob`
- 2 Using a Progress session that is connected to the `dataacc` database, open `<upgrade>/server/DB/incremental/12.9.0/` and run `FinalBrowseViewDefaultFix.p`.

Load Updated Databases into Environment

Perform the following steps to load the updated databases into the YAB environment:

- 1 Perform a backup of the newly updated `dataacc` and the `eam` databases.
- 2 Run `yab stop` on the EAM2017.1/Enterprise Edition 2016 or higher environment.
- 3 Restore the backups into the new environment, over the default EAM 2017.1 databases that were created during the installation process.



Product Information Resources

QAD offers a number of online resources to help you get more information about using QAD products.

[QAD Forums \(community.qad.com\)](https://community.qad.com)

Ask questions and share information with other members of the user community, including QAD experts.

[QAD Knowledgebase \(knowledgebase.qad.com\)*](https://knowledgebase.qad.com)

Search for answers, tips, or solutions related to any QAD product or topic.

[QAD Document Library \(documentlibrary.qad.com\)](https://documentlibrary.qad.com)

Get browser-based access to user guides, release notes, training guides, and so on; use powerful search features to find the document you want, then read online, or download and print PDF.

[QAD Learning Center \(learning.qad.com\)*](https://learning.qad.com)

Visit QAD's one-stop destination for all courses and training materials.

*Log-in required

