



QAD Enterprise Applications

User Guide
QAD Lot Trace Workbench

70-3033-4.0
Version 4.0
September 2017

This document contains proprietary information that is protected by copyright and other intellectual property laws. No part of this document may be reproduced, translated, or modified without the prior written consent of QAD Inc. The information contained in this document is subject to change without notice.

QAD Inc. provides this material as is and makes no warranty of any kind, expressed or implied, including, but not limited to, the implied warranties of merchantability and fitness for a particular purpose. QAD Inc. shall not be liable for errors contained herein or for incidental or consequential damages (including lost profits) in connection with the furnishing, performance, or use of this material whether based on warranty, contract, or other legal theory.

This document contains trademarks owned by QAD Inc. and other companies.

Copyright © 2017 by QAD Inc.

LotTraceWorkbench_UG_v040.pdf/r9m/r9m

QAD Inc.

100 Innovation Place
Santa Barbara, California 93108
Phone (805) 566-6000
<http://www.qad.com>

Contents

- Lot Trace Workbench User Guide Change Summaryv**

- Chapter 1 Lot Trace Workbench1**
 - Lot Trace Workbench2
 - Lot Trace Workbench Flowcharts2
 - Lot Trace Workbench UI5
 - Using Lot Trace Workbench7
 - Example of Using Lot Trace Workbench16

- Product Information Resources23**

Lot Trace Workbench User Guide Change Summary

The following table summarizes significant differences between this document and the previous version.

Date/Version	Description	Reference
September 2017/4.0	Added statement that LTWB now supports supplier consignment	page 2
	Updated screenshots to reflect new UI changes	--
	Added information about the Serial History Browse tab	page 7
	Revised section: Example of Using Lot Trace Workbench	page 16
	Removed section: Troubleshooting Transactions Performed Out of Sequence	--
	Rebranded for LTWB v4.0	--
December 2015/3.0	Revised the troubleshooting section	--
April 2014/2.0	Rebranded to version 2.0	--
March 2014/1.1	Initial publication	--

Lot Trace Workbench

This chapter provides an overview of Lot Trace Workbench as well as information about use and navigation.

Lot Trace Workbench 2

An introduction to Lot Trace Workbench.

Lot Trace Workbench Flowcharts 2

Detailed flowcharts that show tracing forward and backward using Lot Trace Workbench.

Lot Trace Workbench UI 5

An overview of the Lot Trace Workbench user interface.

Using Lot Trace Workbench 7

Detailed instructions on how to use Lot Trace Workbench.

Example of Using Lot Trace Workbench 16

A common example of using Lot Trace Workbench to investigate the causes of a product failure.

Lot Trace Workbench

Lot Trace Workbench is a powerful integrated data analysis browse that allows the user to track materials by lot, item number, or serial number, backward and forward through the production process. Included in this tracking functionality is the ability to trace data across multiple levels in the product structure. Not only can specific data be identified and collected through this workbench, but it can then be exported to Excel, where it allows the user the flexibility for further manipulation and custom report formatting.

Companies that have lot-controlled inventory require the capability to have immediate access to current inventory data, as well as to historical data. When a product is returned or recalled, or inquiries are being made, tracing all the raw materials that are used to produce that product is necessary to investigate possible root causes for issues. Supplier consignment inventory is also supported by Lot Trace Workbench.

The Lot Trace Workbench browse allows you to answer the following questions:

- Which material has been used in production?
- From which suppliers were the raw materials purchased?
- Which materials are consigned from suppliers?

This browse also allows you to analyze the impact of potential issues:

- What are the current levels of affected inventory?
- Where has this material been used?
- Where have materials been shipped?

With Lot Trace Workbench, you can collect this valuable information and:

- Document and report on affected inventories and materials.
- Determine what to do with inventory still on hand, such as inspecting material in quality control, moving material into a new location, cycle counting inventory, putting inventory in quarantine, scrapping inventory, returning material to the supplier, reworking, and so on.

Lot Trace Workbench Flowcharts

Depending on the production processes, you must be able to trace backward and forward across transactions on multiple levels in a product structure. Lot Trace Workbench allows you to navigate backward and forward in historical transaction data to track and trace inventory lots through multiple levels in the receipt, production, inventory, and shipment processes. You can extract specific data for further analysis or auditing purposes as well as save selection criteria so that you can come back to previous trails.

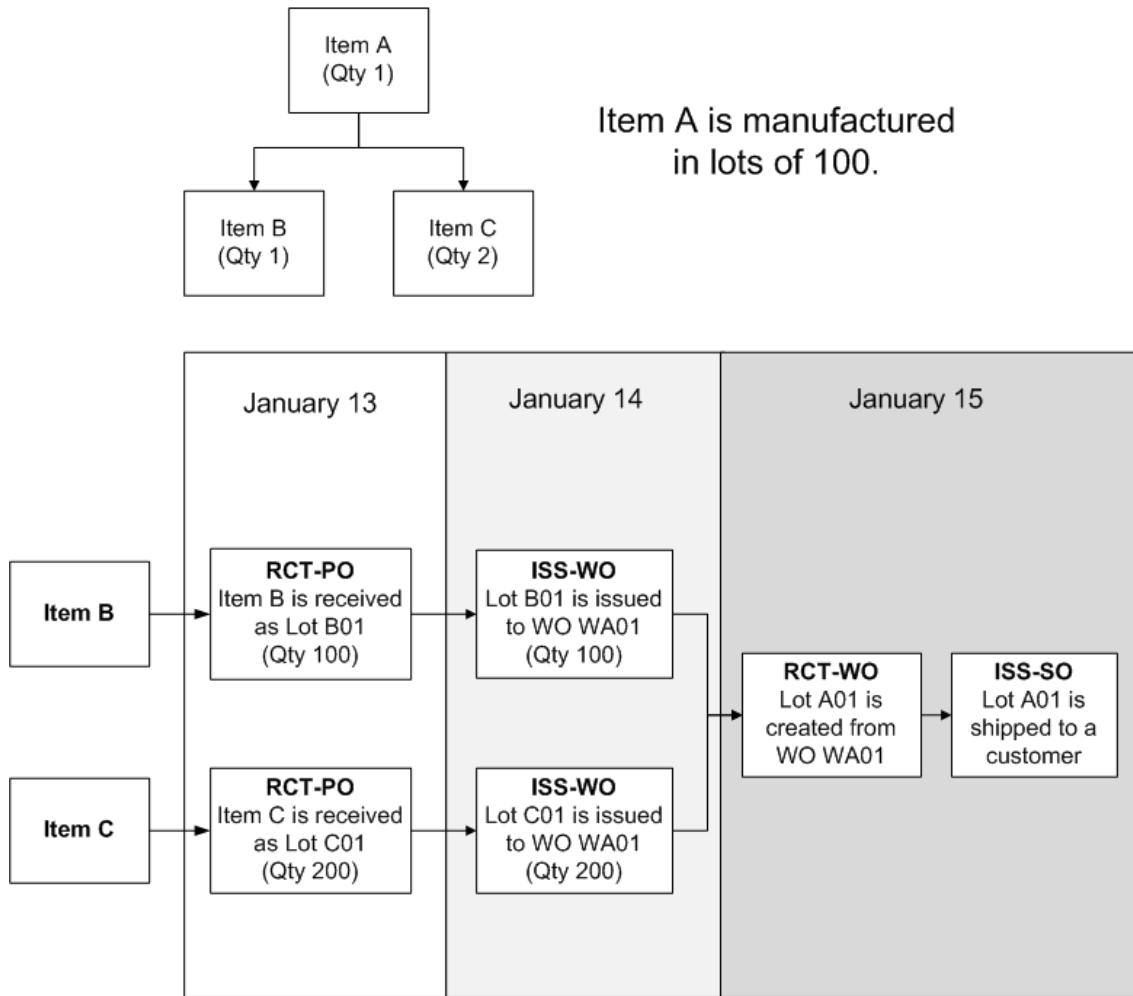
Tracing Backward and Forward Using LTWB

In the following example, item A is made from item B (qty 1) and item C (qty 2). Item A is manufactured in lots of 100. An ideal process flow to manufacture and ship Item A would look like Figure 1.1:

- On January 13, items B and C are received into stock as Lot B01 and Lot C01.
- On January 14, a work order is created (WO WA01) to build qty 100 Item A. Lot B01 and lot C01 are issued to WO WA01.

- On January 15, WO WA01 is completed. Lot A01 is created from WO WA01. Lot A01 is shipped to the customer.

Fig. 1.1
Example of an Item's Process Flow

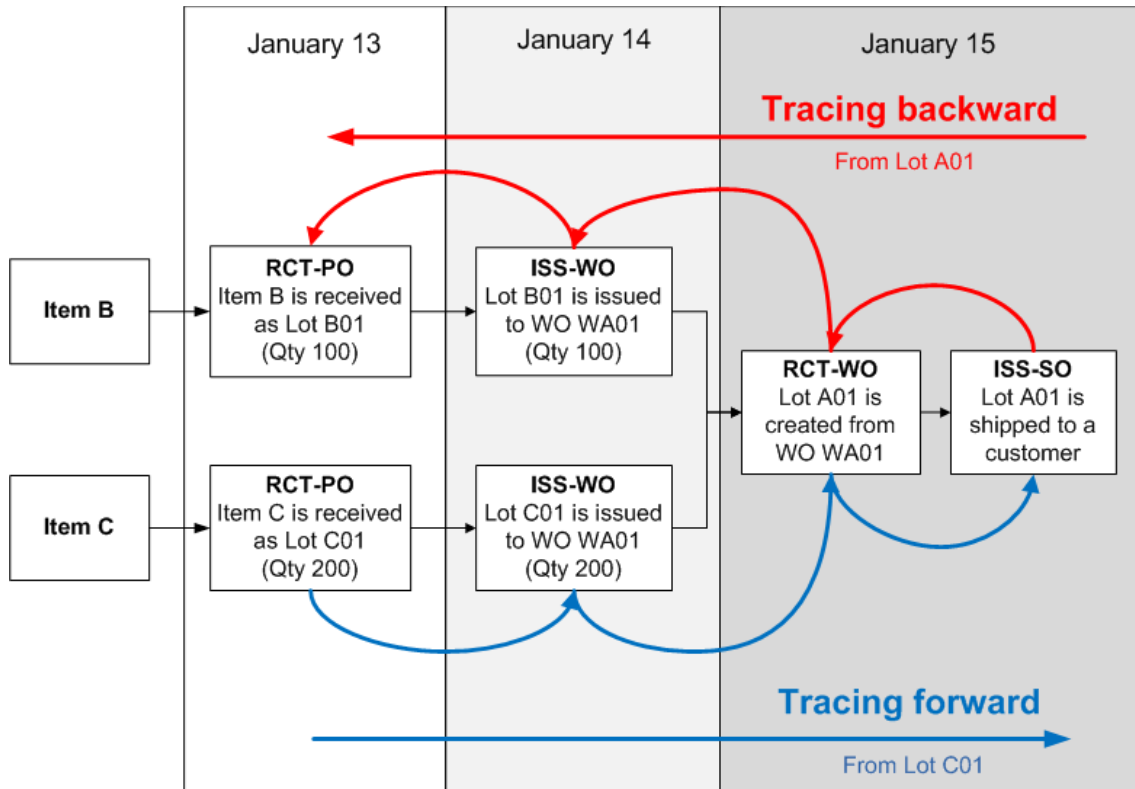


If a customer calls and reports that item A is defective, you can use Lot Trace Workbench to trace backward using either the sales order number and/or lot number that was shipped to the customer. Using the sales order number, you can find the item A lot number that was shipped to the customer, the work order that item A was manufactured on, and the item B and C lot numbers.

Note Typically, the first option is to search forward or backward from a lot number, and the second option is to search from an order number.

If a supplier calls you and reports that one or more lots for item C may have defects, you can use Lot Trace Workbench to trace forward using the purchase order number. You can find the lots for item C, the work orders that item C was issued to, and the lot numbers for manufactured items such as item A that contain the lots for item C, and shipments for the manufactured item lots to customers.

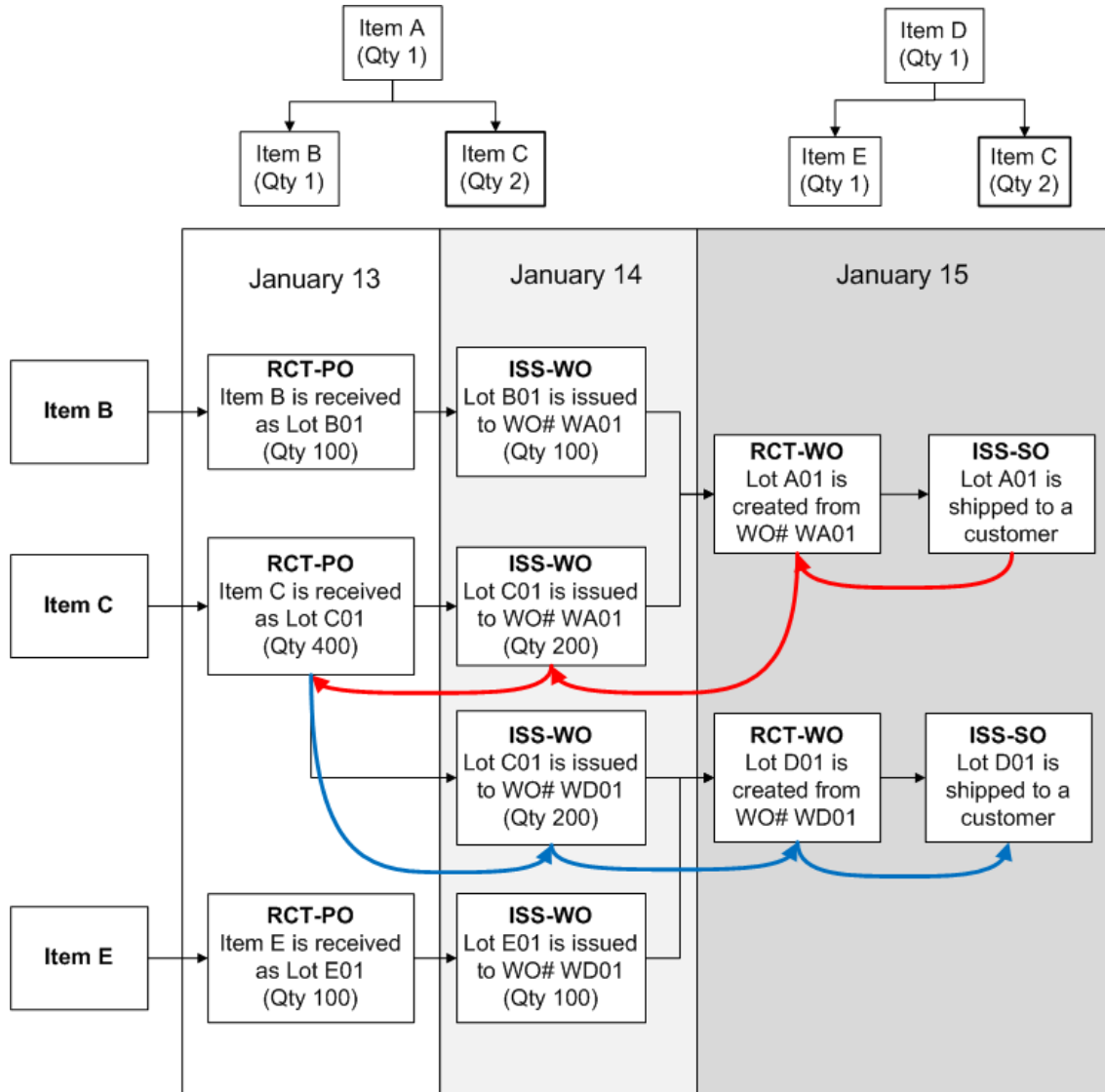
Fig. 1.2
Tracing Backward and Forward Using LTWB



Using LTWB to Trace Where Material Has Been Used

Expanding on the previous example, item C is also used to make item D. If it was discovered that item C is defective, you can use Lot Trace Workbench to trace where item C has been used. Figure 1.3 shows that you can trace backward from the sales order and find out that item C was also used in item D (lot D01).

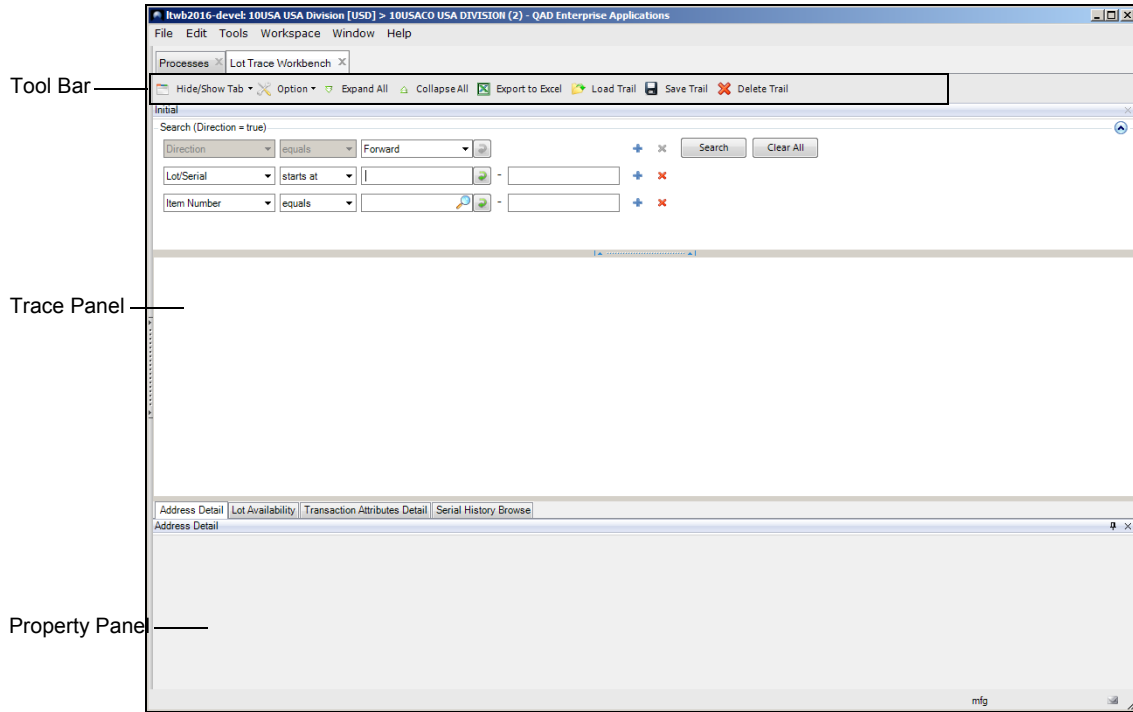
Fig. 1.3
Tracing Where Material Has Been Used



Lot Trace Workbench UI

The Lot Trace Workbench (3.22.6) browse is in Master Data |Inventory Control| Lot/Serial Number Menu |Lot Trace Workbench. The browse consists of the Tool Bar, the Trace Panel, and the Property Panel.

Fig. 1.4
Lot Trace Workbench Browse



Tool Bar

The Tool Bar at the top of the screen contains the following buttons that allow you to customize the UI and to manage the trace trail:

- **Hide/Show Tab.** This drop-down menu allows you to show or hide the Address Detail, Lot Availability, and Transaction Attribute Data tabs in the Property Panel at the bottom of the screen. By default, all tabs are visible.
- **Option.** Click to set Level and Max Workfile parameters.
 - **Level.** Enter a value from 1 to 99 to identify the lowest-level record that the code processes the trace to. The default is level 10. For example, if the level is set to 3, the code does not search for any child records lower than level 3. The result set is only from level 1 to level 3. If the level is set to 0 (zero), there is no depth limitation in processing.
 - **Max Workfile.** The default is 500. Maximum number of records allowed in the inquiry workfile. Programs that use workfiles may exceed established memory limits. If this occurs, Progress immediately exits the session. By setting the max workfile limit to a value less than the memory limit (or conversely increasing the memory limit at startup) this uncontrolled exit can be eliminated. If the max workfile is exceeded, no further workfile records are created and a message displays that the report or inquiry has been truncated. Alternately, the number of workfile records created can be reduced by narrowing the range of items selected for the inquiry or report. The workfile size increases with BOM depth, but the default value should be adequate for most installations.
- **Expand All.** Expand all search results in the trace panel to the lowest level. There are no limitations in the number of levels in the system. Note that inventory transactions, such as inventory transfers, are considered levels as well.

- **Collapse All.** Collapse all search results in the trace panel to the top level.
- **Export to Excel.** Export search criteria and all records in the trace panel to Excel. Only the visible columns in the trace panel are exported.
- **Load Trail.** Load a saved trail. The system brings you back to the original analysis scenario.
- **Save Trail.** Save the search criteria of the trace and the saved trail so that you can reload it to return directly to the original analysis scenario.
- **Delete Trail.** Delete a saved trail.

Trace Panel

Contains the search fields and displays the search results. The system organizes the search results using a drill-in structure indicated by an arrow for the level, which can be selected to expand the next level's transaction. The last transaction level in will not show an arrow.

Property Panel

The Property Panel contains the Address Detail, Lot Availability, Transaction Attribute Data tabs, and Serial History tabs, which provide more detailed information on specific transactions.

- **Address Detail.** The Address Detail tab shows the supplier data for inbound received products or customer data for outbound shipments. This tab shows the name, address and contact information, and the related transaction number. To view the address details for a supplier, you must search on a lot number.
- **Lot Availability.** The Lot Availability tab displays the inventory details related to a specific transaction. This tab shows the item number, quantity, location, status, and the related lot-serial number.
- **Transaction Attribute Data.** When the case-specific lot attributes are associated with an item in an item profile, this tab displays the specific values related with the captured attribute values.

Note The Transaction Attribute Data tab is only available when the Item Attributes and Quality Control products are installed. It is not necessary to have Quality Control implemented. When Item Attributes and Quality Control are not installed, only the Address Detail and Lot Availability tabs appear.

- **Serial History Browse.** Available when Serialization is activated in the system. Displays packaging transaction data related to the inventory transaction.

Using Lot Trace Workbench

By default, the Direction, Item Number, and Lot/Serial search fields are displayed on the startup screen for filtering. For best results include Lot/Serial when known. If desired, use the drop-down menus to change the search criteria or click the + or X icons to add or remove search fields.

Note The Direction search field cannot be removed.

The following filter options are available:

- Address
- ID
- Lot/Serial
- Rev
- Transaction Number
- Batch
- Inventory Status
- Order
- Sales/Job
- Transaction Type

8 QAD Lot Trace Workbench User Guide

- Date
- Effective Date
- Group
- Item Number
- Item Type
- Location
- Product Line
- Reason
- Reference
- Shipper Number
- Site
- Supplier Lot

Searching for Records

Depending on the initial available information and the direction of the search, choose between a backward or forward search:

- **Backward.** Explore upstream processes back to the origin.
- **Forward.** Explore downstream processes forward to the final destination of goods.

Then add information to the search fields and click Search. The results appear in the Trace Panel.

Fig. 1.5
Search Results

The screenshot shows the QAD Lot Trace Workbench interface. At the top, there is a menu bar with 'File', 'Edit', 'Tools', 'Workspace', 'Window', and 'Help'. Below the menu bar is a toolbar with various icons. The main area is divided into several sections:

- Search Fields:** A section with a search bar containing the text 'Search ((Direction = true) and (LotSerial >= 'LT-PRE'))'. Below the search bar are dropdown menus for 'Direction' (set to 'equals'), 'Forward', and 'LotSerial' (set to 'starts at'). There is also a text input field containing 'LT-PRE'.
- Search Results:** A table with columns: Level, Date, Site, Item Number, Description, Quantity, UM, Transaction Number, Lot/Serial, Type, Location, Begin Loc, Bal, Reference, and Order Number. The table contains several rows of data, including items like Sorbitol, Flavor, Magnesium Stearate, Maltodextrin, Pills, and Simethicone.
- Address Detail:** A section at the bottom with a dropdown menu for 'Address Detail' and a table with columns: Address, Name, Address, Address, City, State, Postal Code, County, Country, Attention, Telephone, and Fax Number. The table shows the address for 'Sungu Chemicals' in Los Angeles, CA.

Annotations in the image point to the search fields and the search results table.

Expand or Collapse Records

Click on the carat to expand or collapse a level.

To expand the record to its bottom level, right-click on the record and select Expand.

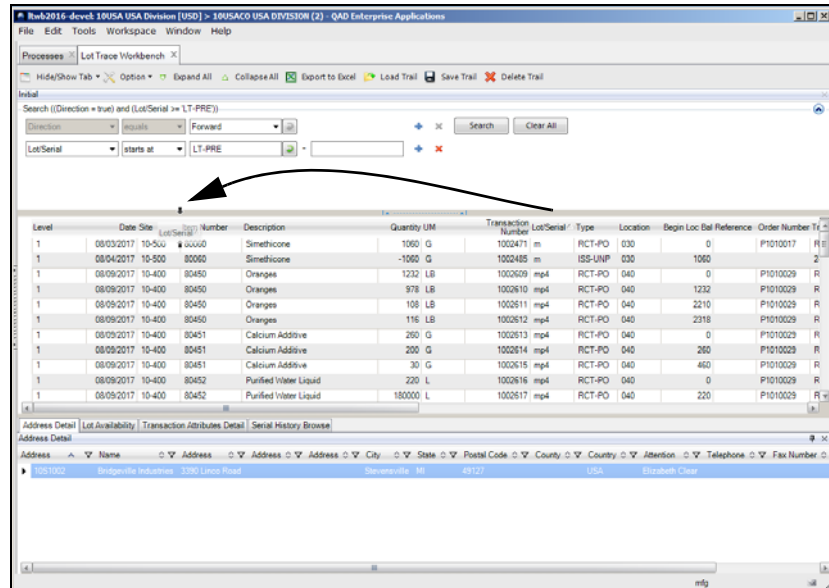
To collapse the record to its top level, right-click on the record and select Collapse.

Moving Columns

To move a column, drag the column header into the desired location. Red arrows appear to indicate the new location.

Fig. 1.6
Moving a Column

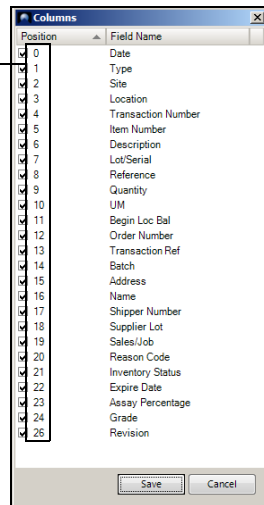
Drag the column into the desired location.



You can also move columns using the Columns window. Right-click the column, select Columns, change the position number, and then click Save.

Fig. 1.7
Moving a Column

To move a column, change the position number.

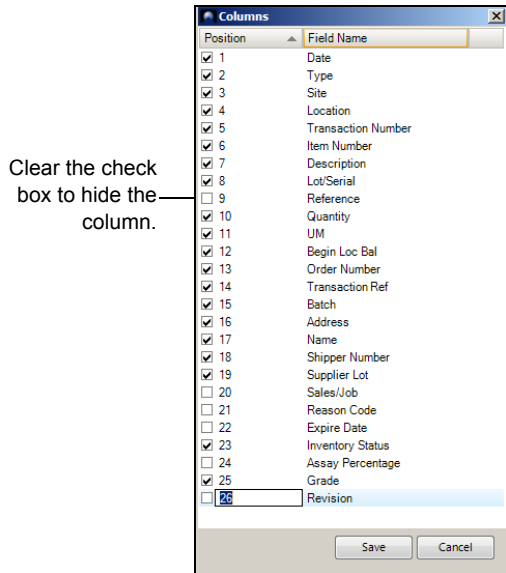


Show or Hide Columns

To hide a column, right-click the column and select Hide Column. To hide multiple columns, right-click the column, select Columns, clear the check box for the columns you want to hide, and then click Save.

To show a column, select its check box.

Fig. 1.8
Showing and Hiding Columns

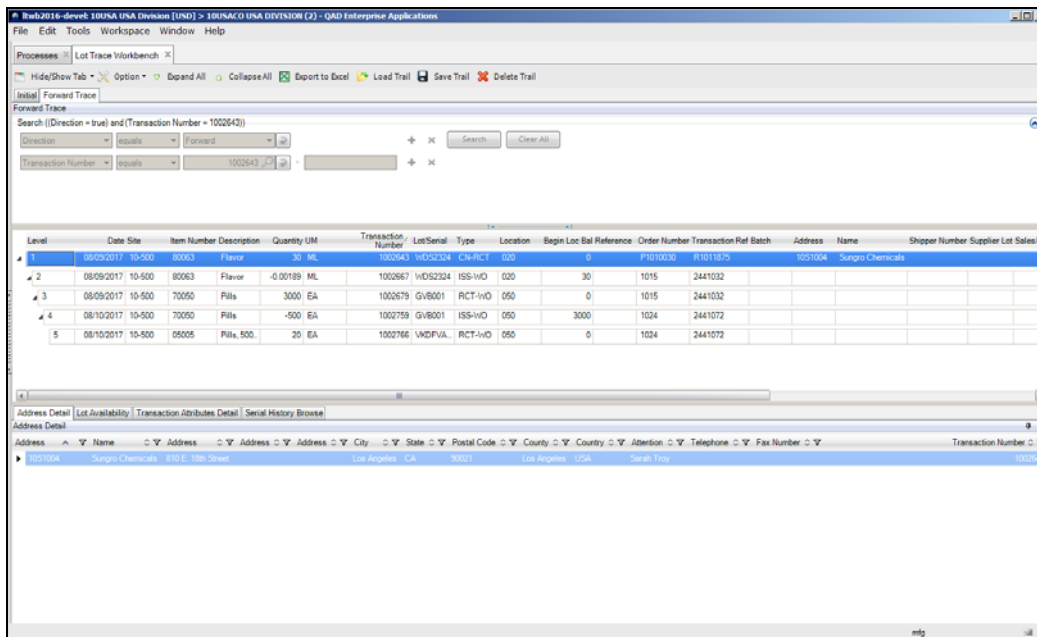


Forward Trace

To perform an additional forward trace on a record, right-click the record and select Forward Trace. The search fields for the forward trace are Item and Transaction Number.

Note The system sets the value for the search fields based on the record that triggers the forward trace. The search criteria are not editable.

Fig. 1.9
Forward Trace

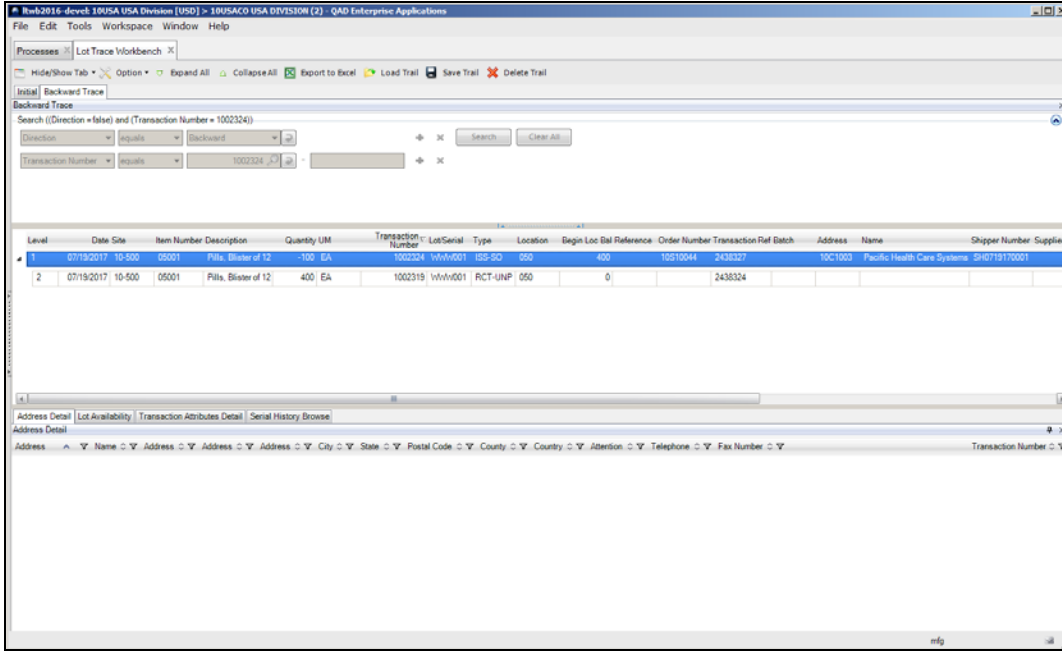


Backward Trace

To perform an additional backward trace on a record, right-click the record and select Backward Trace. The system creates a successive trace tab. The search field for the backward trace is Transaction Number.

Note The system sets the value for the search field based on the record that triggers the backward trace. The search criteria are not editable.

Fig. 1.10
Record that Triggers the Next Trace

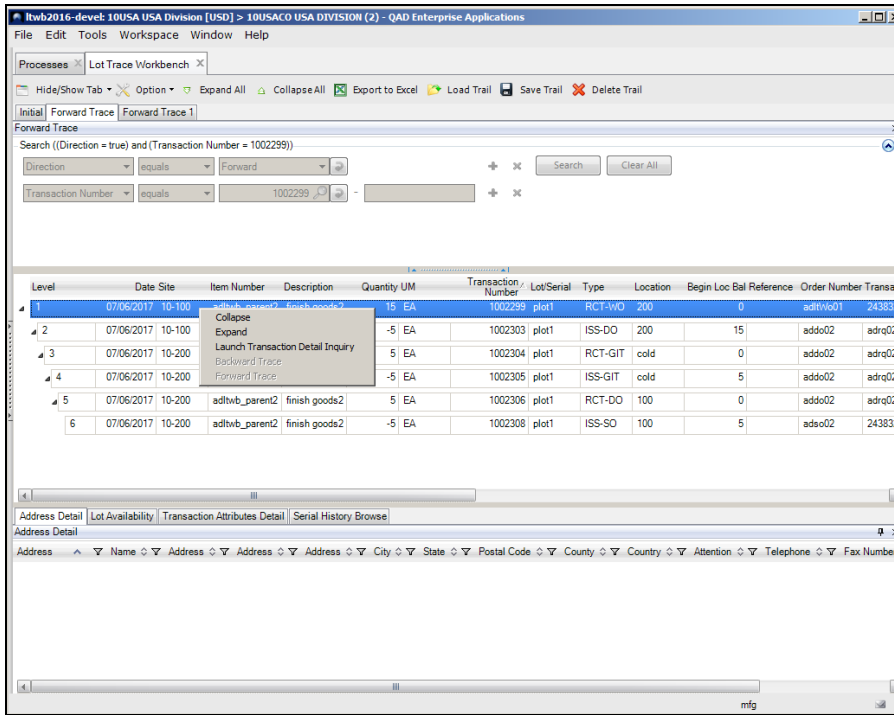


Backward and Forward Trace Tabs

When you perform a backward or forward trace, the system creates an incremental trace tab and highlights the next record that can be triggered.

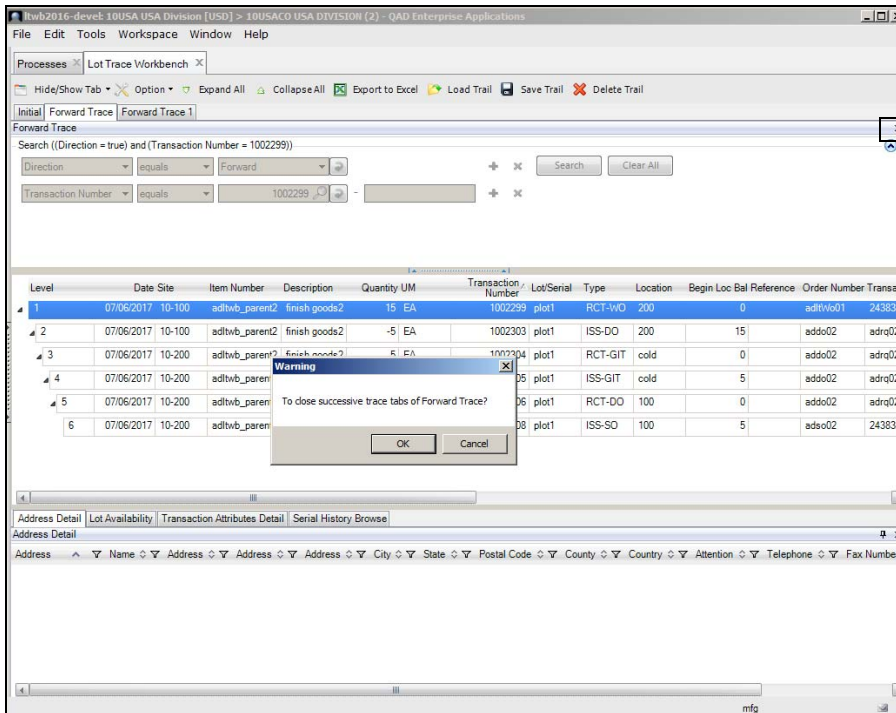
If a trace tab has a successor, another trace cannot be triggered, unless the successive trace tab is closed. In Figure 1.11, the Backward Trace tab is the successor to the Initial Trace tab. If the Backward Trace tab is open, the backward trace option is grayed out and you cannot perform a backwards trace on the Initial trace tab.

Fig. 1.11
Backward Trace Option Grayed Out



When you close a trace tab that has a successor, the system prompts you to close all the successor tabs together. Click OK to close all the successor tabs together.

Fig. 1.12
Closing a Trace Tab



Click the X to close the trace tab.

Launch Inventory Detail Inquiry

To launch the inventory detail inquiry for the selected transaction record, right-click the record and select Launch Inventory Detail Inquiry.

Fig. 1.13

Launch Inventory Detail Inquiry

Transaction: 2200723 Display E-Signature Details: Output:

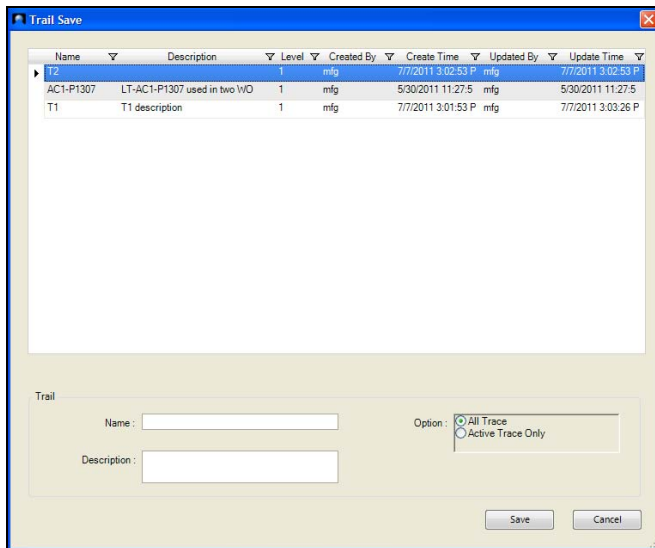
Tran Nbr: 2200723	Order: 10S10024	2326566
Trans Type: ISS-SO	Revision: 0	
Date: 10/17/2012	Item Number: LV301	
Time: 08:31	Description: FINISHED GOOD A	
Effective Date: 10/17/2012	Unit of Measure: EA	
Remarks:	Address: 10C1003	
User ID: mfg	Name: Pacific Health Care	
Program: rcoois.p	SO/Job: 10S10024	
Currency: USD	Ship Type:	
Qty Change: -40.0	Price: 80.00	
Shipper Number: SH1017120003	IMC:	
Ship Date: 10/17/2012		

Saving a New Trail Record

Follow these steps to save a trail record:

- 1 On the toolbar, click Save Trail.
- 2 The Trail Save window, which lists all the saved trail records, opens. By default, the records are sorted by trail name.

Fig. 1.14
Trail Save



- 3 Enter the name of the trace trail in the Name field.
- 4 Enter a description of the trace trail in the Description field.
- 5 Select a save option:
 - **All Traces.** Saves all trace tabs in the current trail.
 - **Active Trace Only.** Saves the active trace tab only.
- 6 Click Save.

Note The Created By, Created Time, Updated By, and Updated Time columns are automatically captured.

Overwrite an Existing Trail Record

Follow these steps to overwrite an existing trail record:

- 1 On the toolbar, click Save Trail.
- 2 The Trail Save window, which lists all the saved trail records, opens. By default, the records are sorted by trail name.
- 3 Click the trail record that you want to overwrite or enter the name of the record in the Name field.
- 4 If necessary, modify the description.
- 5 Select a save option:
 - **All Traces.** Saves all trace tabs in the current trail.
 - **Active Trace Only.** Saves the active trace tab only.
- 6 Click Save.
- 7 A warning message pops up. Click OK to confirm that you want to overwrite the trail record.

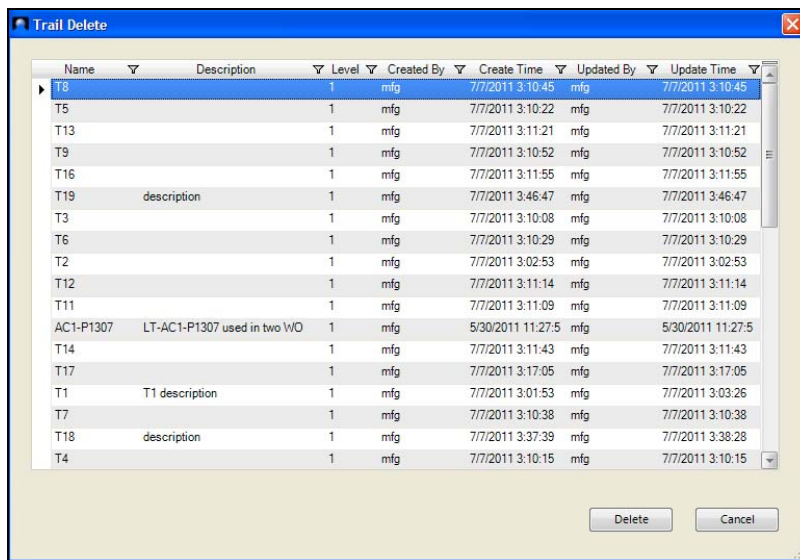
Note The Update By and Update Time are automatically captured.

Deleting a Trail Record

Follow these steps to delete a trail record:

- 1 From the toolbar, Click Delete Trail.
- 2 The Trail Delete window pops up.
- 3 Select the trail record you want to delete and click Delete.

Fig. 1.15
Trail Delete



Loading a Trail Record

Follow these steps to load a trail record:

- 1 From the tool bar, click Load Trail.
- 2 The Trail Load window, which lists all the saved trail records, opens. By default, the records are sorted by trail name. The following information is shown for each trail record:
 - Name
 - Description
 - Level
 - Created By
 - Created Time
 - Updated By
 - Updated Time

Note Every column can be used as a filter to select trail records.

Fig. 1.16
Trail Load

Name	Description	Level	Created By	Create Time	Updated By	Update Time
T8		1	mfg	7/7/2011 3:10:45	mfg	7/7/2011 3:10:45
T5		1	mfg	7/7/2011 3:10:22	mfg	7/7/2011 3:10:22
T13		1	mfg	7/7/2011 3:11:21	mfg	7/7/2011 3:11:21
T9		1	mfg	7/7/2011 3:10:52	mfg	7/7/2011 3:10:52
T16		1	mfg	7/7/2011 3:11:55	mfg	7/7/2011 3:11:55
T19	description	1	mfg	7/7/2011 3:46:47	mfg	7/7/2011 3:46:47
T10		1	mfg	7/7/2011 3:11:02	mfg	7/7/2011 3:11:02
T3		1	mfg	7/7/2011 3:10:08	mfg	7/7/2011 3:10:08
T6		1	mfg	7/7/2011 3:10:29	mfg	7/7/2011 3:10:29
T2		1	mfg	7/7/2011 3:02:53	mfg	7/7/2011 3:02:53
T12		1	mfg	7/7/2011 3:11:14	mfg	7/7/2011 3:11:14
T11		1	mfg	7/7/2011 3:11:09	mfg	7/7/2011 3:11:09
AC1-P1307	LT-AC1-P1307 used in two WO	1	mfg	5/30/2011 11:27:5	mfg	5/30/2011 11:27:5
T14		1	mfg	7/7/2011 3:11:43	mfg	7/7/2011 3:11:43
T17		1	mfg	7/7/2011 3:17:05	mfg	7/7/2011 3:17:05
T1	T1 description	1	mfg	7/7/2011 3:01:53	mfg	7/7/2011 3:03:26
T7		1	mfg	7/7/2011 3:10:38	mfg	7/7/2011 3:10:38
T18	description	1	mfg	7/7/2011 3:37:39	mfg	7/7/2011 3:38:28

- 3 Open the trail record by double-clicking the record or selecting the record and clicking Load.
- 4 The trail record opens in a new Lot Trace Workbench window.

Example of Using Lot Trace Workbench

Example A supplier alerts their customers of a recall involving one of their products. The customer receives the part number and lot number that must be recalled and sent back to the supplier. In this example, you:

- Find out if there were any shipments sent to customers that used the product that is part of the recall.
 - Search for all shipments from that lot for every customer.
 - Search existing inventory so that you can return the product that is part of the recall.
 - Find the batch/production order used to produce this specific lot.
 - Find items/lots used for this batch order.
 - Find how the product was produced and view the components issued to the work orders.
 - View transaction data for the production of the item.
 - Trace forward to view the total impact (view how many other work orders used this item).
- 1 With the information given to you from the supplier, you must choose to perform a backward or forward trace.
 - **Backward.** Explore upstream processes back to the origin.
 - **Forward.** Explore downstream processes forward to the final destination of goods.

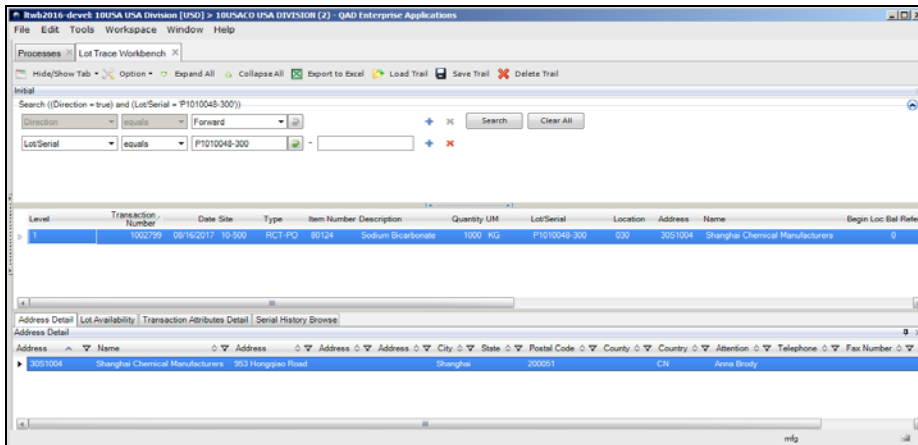
In this example, you are searching for any inventory, either in stock or in WIP, and any shipments that are affected by the recall. Because the supplier gave you the item number and lot number of the recalled product, you will perform a forward trace to determine the final destinations of this product.

2 In this example, you have the following information regarding the recall:

- Supplier: Shanghai Chemical Manufacturers (30S1004)
- Item: Sodium Bicarbonate (80124)
- Lot/Serial: P1010048-300

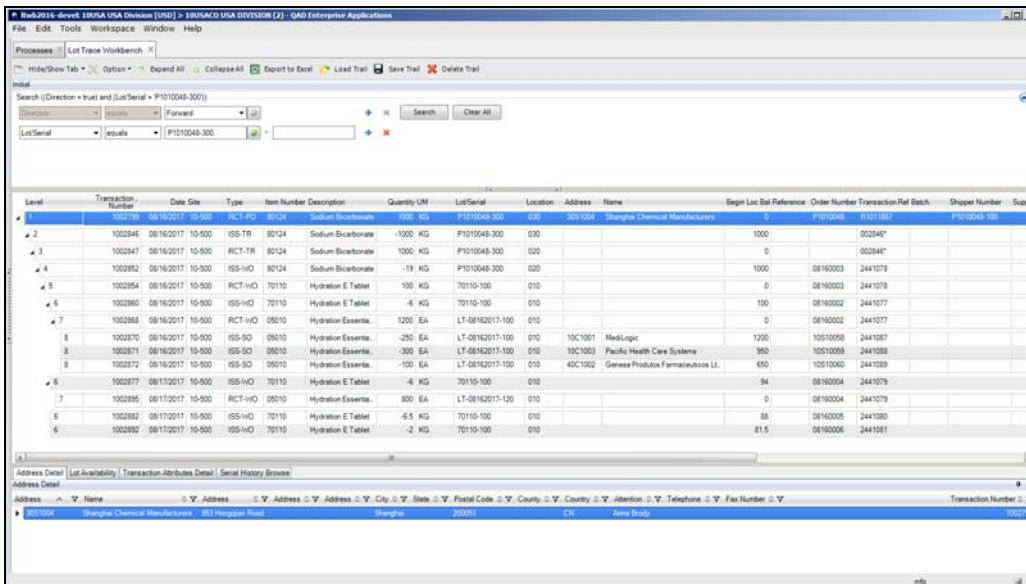
To find any inventory, either in stock or in WIP, and any shipments that are affected by the recall, perform a forward trace on the Lot/Serial number that was given.

Fig. 1.17
Lot Trace Workbench - Forward Trace



3 To view all levels in the Trace Panel, click Expand All, or right-click on the first level and select Expand.

Fig. 1.18
Lot Trace Workbench



4 The lot trace results show the following information:

- Sodium Bicarbonate (Item 80124 / Lot P1010048-300) was used to produce the Hydration E Tablet (Item 70110 /Lot/Serial 70110-110).

- The Hydration E Tablet (Lot/Serial 70110-110) was then used to produce Hydration Essentials 50 (Item 05010 / Lot/Serial LT-08162017-100 and LT-08162017-200).

Fig. 1.19 Lot Trace Workbench Forward Trace

Level	Transaction Number	Date	Site	Type	Item Number	Description	Quantity	UM	Lot/Serial	Location	Address	Name	Begin Loc	Ref Reference	Order Number	Transaction Ref	Batch	Shipper Number	Ship	
1	1002789	08/16/2017	10-500	RCT-PO	80124	Sodium Bicarbonate	1000	KG	P1010048-300	030	3001004	Stange Chemical Manufacturers	0	P1010048	P1011887			P1010048-100		
2	1002846	08/16/2017	10-500	ISS-TR	80124	Sodium Bicarbonate	-1000	KG	P1010048-300	030			1000						002846*	
3	1002847	08/16/2017	10-500	RCT-TR	80124	Sodium Bicarbonate	1000	KG	P1010048-300	020			0						002846*	
4	1002852	08/16/2017	10-500	ISS-WO	80124	Sodium Bicarbonate	-19	KG	P1010048-300	020			1000		08160003				2441078	
5	1002854	08/16/2017	10-500	RCT-WO	70110	Hydration E Tablet	100	KG	70110-100	010			0		08160003				2441078	
6	1002860	08/16/2017	10-500	ISS-WO	70110	Hydration E Tablet	-6	KG	70110-100	010			100		08160002				2441077	
7	1002868	08/16/2017	10-500	RCT-WO	05010	Hydration Essenta.	1200	EA	LT-08162017-100	010			0		08160002				2441077	
8	1002910	08/16/2017	10-500	ISS-SO	05010	Hydration Essenta.	-250	EA	LT-08162017-100	010	10C1001	MediLogic	1200		10510058				2441087	
8	1002871	08/16/2017	10-500	ISS-SO	05010	Hydration Essenta.	-300	EA	LT-08162017-100	010	10C1003	Pacific Health Care Systems	950		10510059				2441088	
8	1002872	08/16/2017	10-500	ISS-SO	05010	Hydration Essenta.	-100	EA	LT-08162017-100	010	40C1002	Genese Produtos Farmaceuticos Lt.	650		10510060				2441089	
6	1002877	08/17/2017	10-500	ISS-WO	70110	Hydration E Tablet	-6	KG	70110-100	010			94		08160004				2441079	
7	1002895	08/17/2017	10-500	RCT-WO	05010	Hydration Essenta.	800	EA	LT-08162017-120	010			0		08160004				2441079	
6	1002882	08/17/2017	10-500	ISS-WO	70110	Hydration E Tablet	-6.5	KG	70110-100	010			88		08160005				2441080	
6	1002892	08/17/2017	10-500	ISS-WO	70110	Hydration E Tablet	-2	KG	70110-100	010			815		08160006				2441081	

Type	Item Number	Description	Quantity	UM	Lot/Serial
RCT-PO	80124	Sodium Bicarbonate	1000	KG	P1010048-300
ISS-TR	80124	Sodium Bicarbonate	-1000	KG	P1010048-300
RCT-TR	80124	Sodium Bicarbonate	1000	KG	P1010048-300
ISS-WO	80124	Sodium Bicarbonate	-19	KG	P1010048-300
RCT-WO	70110	Hydration E Tablet	100	KG	70110-100
ISS-WO	70110	Hydration E Tablet	-6	KG	70110-100
RCT-WO	05010	Hydration Essentials 50	1200	EA	LT-08162017-100
ISS-SO	05010	Hydration Essentials 50	-250	EA	LT-08162017-100
ISS-SO	05010	Hydration Essentials 50	-300	EA	LT-08162017-100
ISS-SO	05010	Hydration Essentials 50	-100	EA	LT-08162017-100
ISS-WO	70110	Hydration E Tablet	-6	KG	70110-100
RCT-WO	05010	Hydration Essentials 50	800	EA	LT-08162017-120
ISS-WO	70110	Hydration E Tablet	-6.5	KG	70110-100
ISS-WO	70110	Hydration E Tablet	-2	KG	70110-100

The forward trace also shows that the Hydration Essentials 50 (Lot/Serial LT-08162017-100) was shipped to 3 different customers.

- MediLogic received Qty 250 on Sales Order 2441087
- Pacific Health Care Systems received Qty 300 on Sales Order 2441088
- Genese Produtos Farmaceuticos Ltda received Qty 100 on Sales Order 2441089

Because these orders used the lot of Sodium Bicarbonate that needs to be recalled, you must now contact the customers and alert them to send the product back to your warehouse as part of the recall.

Fig. 1.20
Lot Trace Workbench Forward Trace

Level	Transaction Number	Date	Site	Type	Item Number	Description	Quantity	UM	Lot/Serial	Location	Address	Name	Begin Loc Bal Reference	Order Number	Transaction Ref	Batch	Shipper Number	Supp
1	1002799	08/16/2017	10-500	RCT-PO	80124	Sodium Bicarbonate	1000	KG	P1010048-300	030	3051004	Shanghai Chemical Manufacturers	0	P1010048	R1011887		P1010048-100	
2	1002946	08/16/2017	10-500	ISS-TR	80124	Sodium Bicarbonate	-1000	KG	P1010048-300	030			1000				002946*	
3	1002947	08/16/2017	10-500	RCT-TR	80124	Sodium Bicarbonate	1000	KG	P1010048-300	020			0				002946*	
4	1002852	08/16/2017	10-500	ISS-WO	80124	Sodium Bicarbonate	-19	KG	P1010048-300	020			1000	08160003			2441078	
5	1002854	08/16/2017	10-500	RCT-WO	70110	Hydration E Tablet	100	KG	70110-100	010			0	08160003			2441078	
6	1002860	08/16/2017	10-500	ISS-WO	70110	Hydration E Tablet	-6	KG	70110-100	010			100	08160002			2441077	
7	1002868	08/16/2017	10-500	RCT-WO	05010	Hydration Essentials	1200	EA	LT-08162017-100	010			0	08160002			2441077	
8	1002970	08/16/2017	10-500	ISS-SO	05010	Hydration Essentials	-250	EA	LT-08162017-100	010	10C1001	MediLogic	1200	10S10058			2441087	
8	1002871	08/16/2017	10-500	ISS-SO	05010	Hydration Essentials	-300	EA	LT-08162017-100	010	10C1003	Pacific Health Care Systems	950	10S10059			2441088	
8	1002872	08/16/2017	10-500	ISS-SO	05010	Hydration Essentials	-100	EA	LT-08162017-100	010	40C1002	Genese Produtos Farmaceuticos Lt	650	10S10060			2441089	
5	1002877	08/17/2017	10-500	ISS-WO	70110	Hydration E Tablet	-6	KG	70110-100	010			38	08160004			2441079	
7	1002955	08/17/2017	10-500	RCT-WO	05010	Hydration Essentials	800	EA	LT-08162017-120	010			0	08160004			2441079	
6	1002882	08/17/2017	10-500	ISS-WO	70110	Hydration E Tablet	-6.5	KG	70110-100	010			88	08160005			2441080	
6	1002892	08/17/2017	10-500	ISS-WO	70110	Hydration E Tablet	-2	KG	70110-100	010			81.5	08160006			2441081	

LT-08162017-100	010	10C1001	MediLogic	1200	10S10058	2441087
LT-08162017-100	010	10C1003	Pacific Health Care Systems	950	10S10059	2441088
LT-08162017-100	010	40C1002	Genese Produtos Farmaceuticos Ltda	650	10S10060	2441089

- The forward trace that was performed on the lot/serial for the recalled product also shows how much of that product is still in inventory.

If you select the top level for Sodium Bicarbonate (Item 80124 / Lot P1010048-300) and then select the Lot Availability tab, you will see that there is 981 kg of the product in site 10-500 (Location 020) that will need to be quarantined and sent back to the supplier.

Fig. 1.21
Lot Trace Workbench - Lot Availability

Transaction Number	Date	Site	Type	Item Number	Description	Quantity	UM	Lot/Serial	Location	Address	Name	Begin Loc Bal Reference	Order Number	Transaction Ref	Batch	Shipper Number	Supp
1002799	08/16/2017	10-500	RCT-PO	80124	Sodium Bicarbonate	1000	KG	P1010048-300	030	3051004	Shanghai Chemical Manufacturers	0	P1010048	R1011887		P1010048-100	
1002946	08/16/2017	10-500	ISS-TR	80124	Sodium Bicarbonate	-1000	KG	P1010048-300	030			1000				002946*	
1002947	08/16/2017	10-500	RCT-TR	80124	Sodium Bicarbonate	1000	KG	P1010048-300	020			0				002946*	
1002852	08/16/2017	10-500	ISS-WO	80124	Sodium Bicarbonate	-19	KG	P1010048-300	020			1000	08160003			2441078	
1002854	08/16/2017	10-500	RCT-WO	70110	Hydration E Tablet	100	KG	70110-100	010			0	08160003			2441078	
1002860	08/16/2017	10-500	ISS-WO	70110	Hydration E Tablet	-6	KG	70110-100	010			100	08160002			2441077	
1002868	08/16/2017	10-500	RCT-WO	05010	Hydration Essentials 50	1200	EA	LT-08162017-100	010			0	08160002			2441077	

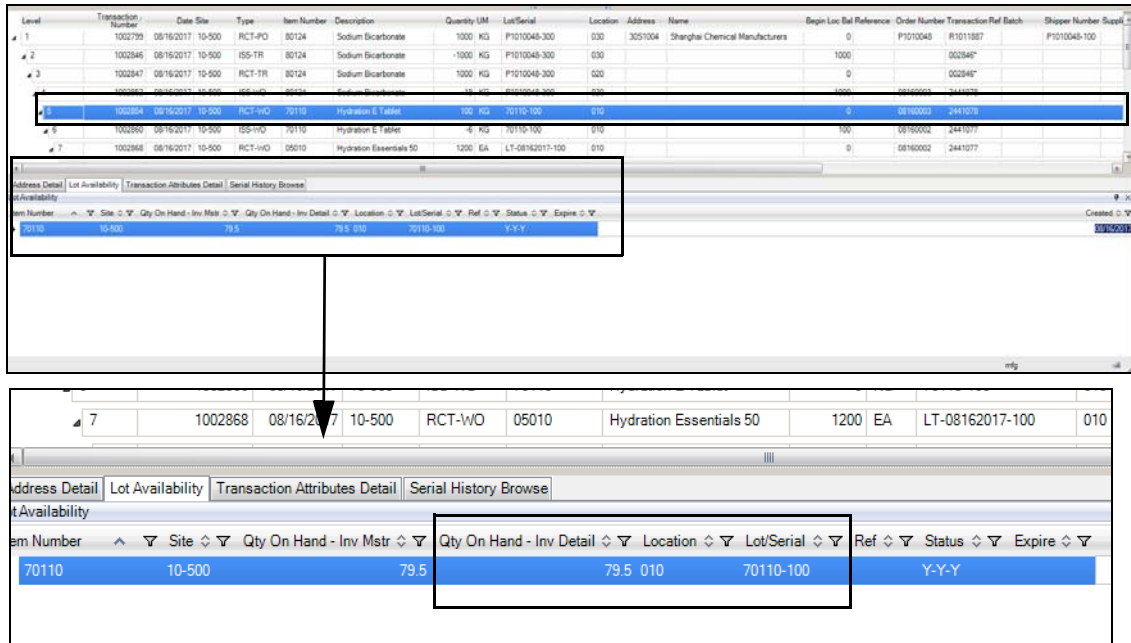
Item Number	Site	Qty On Hand - Inv Mstr	Qty On Hand - Inv Detail	Location	Lot/Serial	Ref	Status	Expire
80124	10-500	1,981.0	981.0	020	P1010048-300		Y-Y-Y	

Item Number	Site	Qty On Hand - Inv Mstr	Qty On Hand - Inv Detail	Location	Lot/Serial	Ref	Status	Expire
70110	10-500	79.5	79.5	010	70110-100		Y-Y-Y	

- When you select the level for the Hydration E Tablet (Lot/Serial 70110-110), the Lot Availability tab shows that there is a qty of 79.5 kg. in Site 10-500 (Location 010) that will need to be quarantined and possibly scrapped.

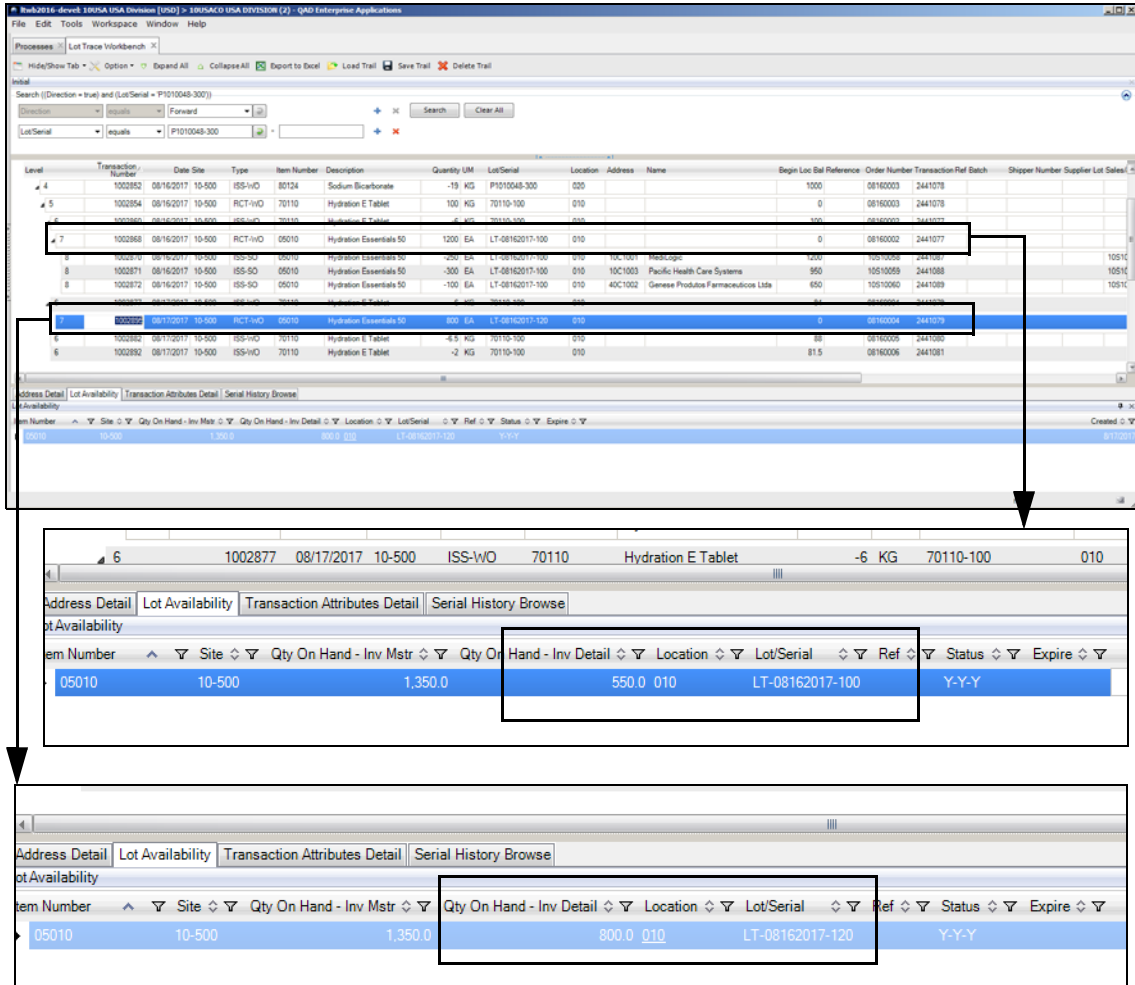
Each level 6 for the Hydration E Tablet (Item 70110) displays the work order numbers that the recalled product was issued to so that you can quarantine any products that are currently in WIP.

Fig. 1.22
Lot Trace Workbench - Lot Availability



- When you select the levels for the Hydration Essentials 50 (Item 05010 / Lot/Serial LT-08162017-100 and LT-08162017-200), the Lot Availability tab shows that there is a qty of 500 for Lot/Serial LT-08162017-100 and a qty of 800 for Lot/Serial LT-08162017-200. Both quantities are in Site 10-50 (Location 010) and will need to be quarantined and possibly scrapped.

Fig. 1.23
Lot Trace Workbench - Lot Availability



8 Using Lot Trace Workbench and the information given to you by the supplier, you were able to successfully trace and locate all inventory and shipments that were affected by the recall.

Product Information Resources

QAD offers a number of online resources to help you get more information about using QAD products.

[QAD Forums \(community.qad.com\)](https://community.qad.com)

Ask questions and share information with other members of the user community, including QAD experts.

[QAD Knowledgebase \(knowledgebase.qad.com\)*](https://knowledgebase.qad.com)

Search for answers, tips, or solutions related to any QAD product or topic.

[QAD Document Library \(documentlibrary.qad.com\)](https://documentlibrary.qad.com)

Get browser-based access to user guides, release notes, training guides, and so on; use powerful search features to find the document you want, then read online, or download and print PDF.

[QAD Learning Center \(learning.qad.com\)*](https://learning.qad.com)

Visit QAD's one-stop destination for all courses and training materials.

*Log-in required

