



QAD Adaptive Applications

QAD Global Trade and Transportation Execution (GTTE) v20.4 Release Notes

March 2024

These release notes include information about the changes made to the latest version of QAD GTTE—formerly QAD Precision. The changes consist of new functionality, enhancements to existing functionality, and fixes.

Contents

| | |
|---------------------------------------------------|----|
| Overview | 3 |
| Related Documentation | 4 |
| New Functionality, Enhancements, and Fixes | 5 |
| Export Management | 5 |
| Import Management | 6 |
| Delivery Exception Management (DEM) | 6 |
| Docs | 8 |
| Base | 10 |
| Transportation Execution (TE) | 11 |
| Web UI Updates | 11 |
| Transportation Execution - Global Carrier Network | 12 |
| Introduction | 12 |
| General Enhancements | 12 |
| Carrier-Specific Enhancements | 12 |
| Highway | 21 |
| Content Subscriber | 21 |
| Enhancements | 21 |
| Minor Fixes and Security Changes | 21 |
| Technical Details | 22 |
| Extensions | 22 |
| Java Version | 22 |
| OTM Integration | 22 |
| QZ Tray Integration | 22 |
| Transaction Counting | 22 |
| Web Security | 23 |

Overview

Current QAD GTTE Version: 20.4

Release Date: March 2024

Table 1 lists the components that have been updated with QAD GTTE v20.4.

Table 1

Components Updated with QAD GTTE v20.4

| Component | Version |
|--------------------------------------------------------------------------------------------------------------------|-------------------------------------------------------------------------------------|
| Win UI <ul style="list-style-type: none"> Carrier Shipping Integrations ATLAS AES | R14 <ul style="list-style-type: none"> S49 R15 R14 |
| Web UI Highway | 10.0.0 11.0.0 |
| DEM | 11.0.5-30 (Feature Update #13 and some additional enhancements) |
| Imports | 11.0.1-4 |
| Docs | 11.0.0-24 (Feature Update #3 and release fixes) |
| Analytics (Transport Execution, DEM, Trade Compliance, Product Master) | - Note: There is now only one artifact for analytics. |
| TE | 11.0.0-47 |
| OTM | 2.0.2 |
| Content Subscriber Agent | 6.1.0 |
| Keycloak | 18.0.2 (No change) |
| Report Server | v23.1 (No change) |
| EFM | 11.0.0-15 |
| Exports | 11.0.0-8 |
| FBAP | 11.0.0-29 |
| Foundation | 11.0.0-24 |
| Config Server | 11.0.0-8 |
| Eureka | 11.0.0-8 |

| | |
|------------------|-------------------|
| Gateway | 11.0.0-7 |
| Sidecar | 3.0.0-8 |
| Extensions (Ext) | 11.0.0-6 (New) |

Related Documentation

The latest version of the QAD GTTE online help is available at:

- <https://documentlibrary.qad.com/help/precision/latest/index.html>

New Functionality, Enhancements, and Fixes

GTTE v20.4 contains a number of noteworthy enhancements.

Export Management

The ATLAS R15 release is available in QAD GTTE v20.4, and includes the following new features and bug fixes:

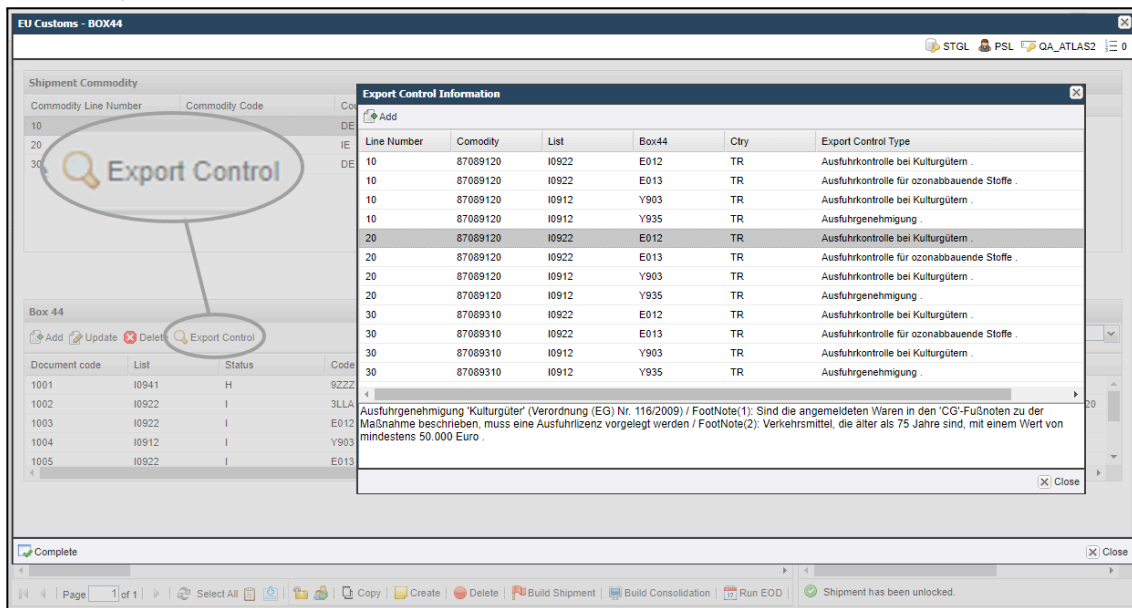
ATLAS Box 44 Export Control

The Export Control feature is now available for ATLAS in the EU Customs - BOX44 workflow task.

QAD GTTE provides export control content to companies that have a contract with Bundesanzeiger Verlagsges, also known as Reguvis. Using the Export Control Information window, these companies can use export control information to manually create Box 44 elements, then add the information to a shipment commodity.

Fig. 1

ATLAS Export Control Information Window



Technical Enhancements

- If the UNcode variable is blank, the BX-20-2 Location and BC-20-CTISO - Country variables are no longer set as blank.

Bug Fixes

- An issue with ATLAS workflow task timestamps is resolved.
- The DEXPEE message no longer contains an empty GoodsShipment node.
- An issue where the REJ message could not find a link to the shipment is resolved.

Import Management

Quick Access to the Product Master Through the Imports Portal

You can now access the Product Master page through the Imports Portal (menu option IMP). Direct access to the Product Master is available through the Pre-Entry dropdown menu on the menu bar or menu option IMPPR, which replaces the PRM menu option.

Note: For backwards compatibility, the PRM menu option is still available, but it redirects you to the IMPPR page.

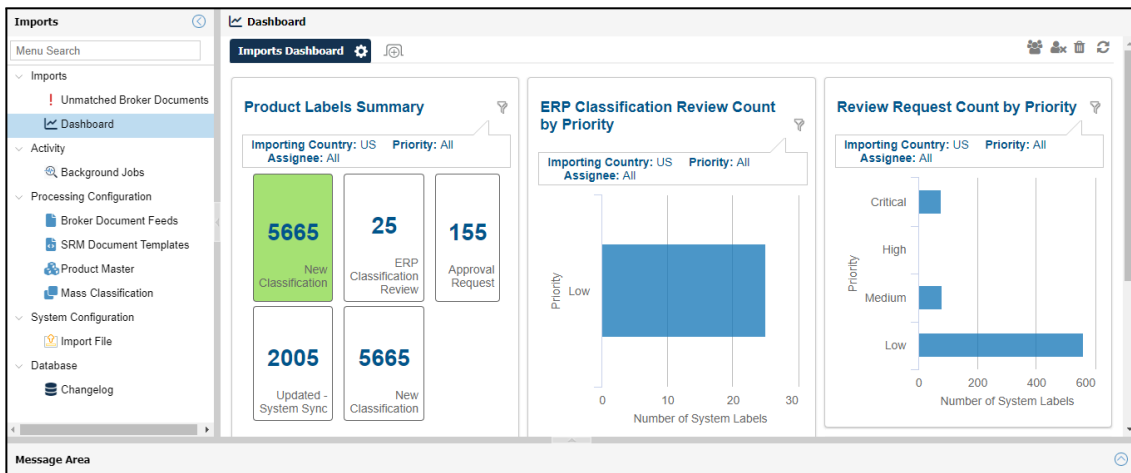
Imports Dashboard Updates

The Product Master - Dashboard page is now integrated into the new Imports Dashboard page. You can access the Imports Dashboard page through the Imports Portal (menu option IMP). Direct access to the dashboard is available through menu option IMPDH, which replaces the ANPRM menu option.

Note: For backwards compatibility, the ANPRM menu option is still available, but it redirects you to the IMPDH page.

Fig. 2

Imports Dashboard



Delivery Exception Management (DEM)

Supplier Integrations

- DEM supports a number of new supplier tracking updates.

Table 3

New Supplier Tracking Updates in the QAD GTTE v20.4 Release

| Supplier | Status Message Format |
|----------|-----------------------|
| AGX | API (Date Range) |

| | |
|-----------------|-----------------------|
| Expeditors | API (Date Range) |
| FedEx | API (Tracking Number) |
| Geodis (Europe) | API (Date Range) |
| Speedlink | API (Date Range) |

- DEM includes enhancements for the following supplier integrations.

Table 4

DEM Supplier Integrations Enhanced in the QAD GTTE v20.4 Release

| Supplier | Enhancement |
|----------------|------------------------------------------------------------------------------------------------------------------------------------------------------------------------------------------------------------------------------------------------------------------------------------------------------------------------------------------------------------------------------|
| DHL | EDI 214 v4010: DEM now supports the generic EDI 214 v4010 format alongside the DHL IFTSTA D01B format. |
| Gebrüder Weiss | EDI 214 v4010: The Ship To/Ship From data is now parsed differently. |
| Purolator | EDI 214 v4010: DEM now supports the new version of the Purolator EDI 214 v4010 specification. |
| UPS | <p>EDI 214 v5010: The shipment direction is now determined by the L11 segment.</p> <p>Also, for inbound shipments, the Bill-To account is now used as the UPS account number if it is provided in the EDI file. Otherwise, the shipper account is used.</p> <p>A new status code, OT, has been added to the UPS integration to flag "Out for delivery Today" deliveries.</p> |

- The total number of recognized suppliers listed by the Create Supplier Wizard is now 121.

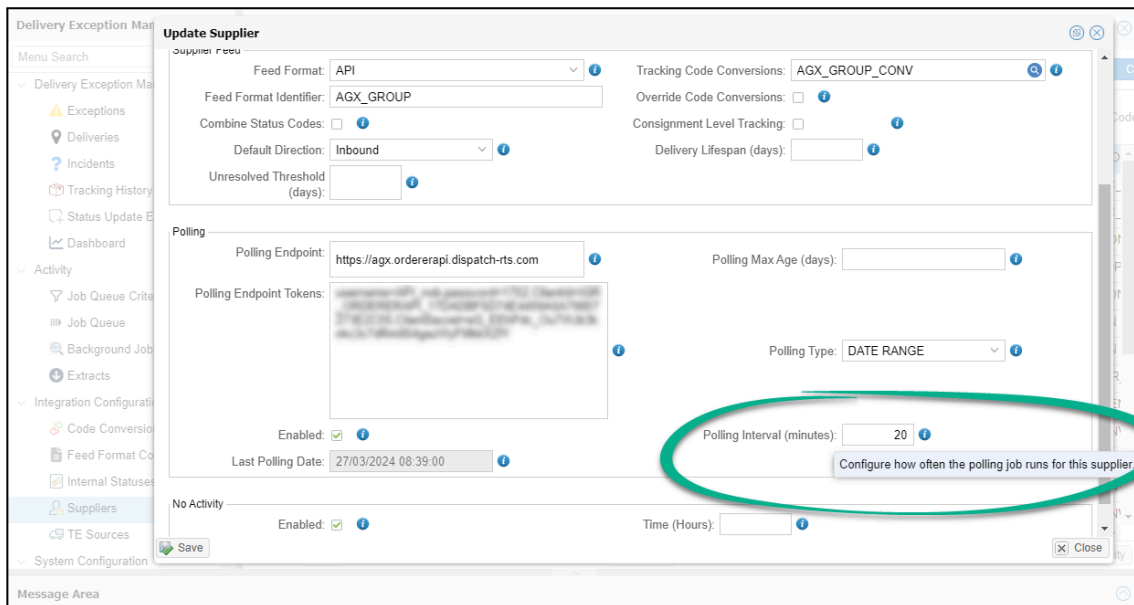
Minor Enhancements

- Address line 2 of the Ship To address now displays on the Tracking History page in the bottom left boxed area.
- Technical change: The DEM microservice now requires Java 17 to run.
- Menu options for the deprecated Packaged Exception Management (PEM) module are now removed from the Web UI.
- When you are selecting a value for the Supplier Preset in the Create Supplier Wizard, a new icon to the right of each supplier name identifies the type of integration—API, EDI, and other types including CSV, flat-file, and XML integrations.

- You can now use the Override Code Conversions field in the Update Supplier modal to override the code conversions and code mappings associated with the supplier. When you select this field, the system creates an additional code conversion for the supplier. Ensure that you use this option to manage any instances of code mappings that differ from the standard mappings.
- There is validation of uploads of JSON files that contain code conversion data. If the code conversion is not associated with a TE source or supplier, the upload fails. The validation also applies when you create code conversions manually.
- Two new columns are visible in the Deliveries page:
 - Transport Mode
 - Original Transport Mode
- You can now configure the API polling interval at the supplier level. The polling interval is set in minutes. The minimum interval is 10 minutes. The default value is 60 minutes for Poll by Tracking Number suppliers. For date-time range API suppliers, the default value is 20 minutes.

Fig. 3

Configuring the API Polling Interval at the Supplier Level



Minor Fix

Some issues with viewing the Tracking History page at a lower screen resolution or on a smaller screen size are now resolved.

Docs

Enhancements

Sort By Hint

When you create or update a document, in the new Sort By Hint field, you can specify how item line details are sorted using comma-separated hints. Use sorting to sort common lists, such as charges, commodities, items, and pack headers.

In a hint, to specify how data in a document is sorted, use the following format:

```
[list-name1]=[field-name11[:DESC]], [field-name12[:DESC]], ...  
[list-name2]=[field-name21[:DESC]], [field-name22[:DESC]], ...
```

For instance, to sort shipment item data by ascending purchase order (PO) number and—if there are multiple items with the same PO number—sort them by order number in descending order, use:

```
items=poNumber,orderNumber:DESC
```

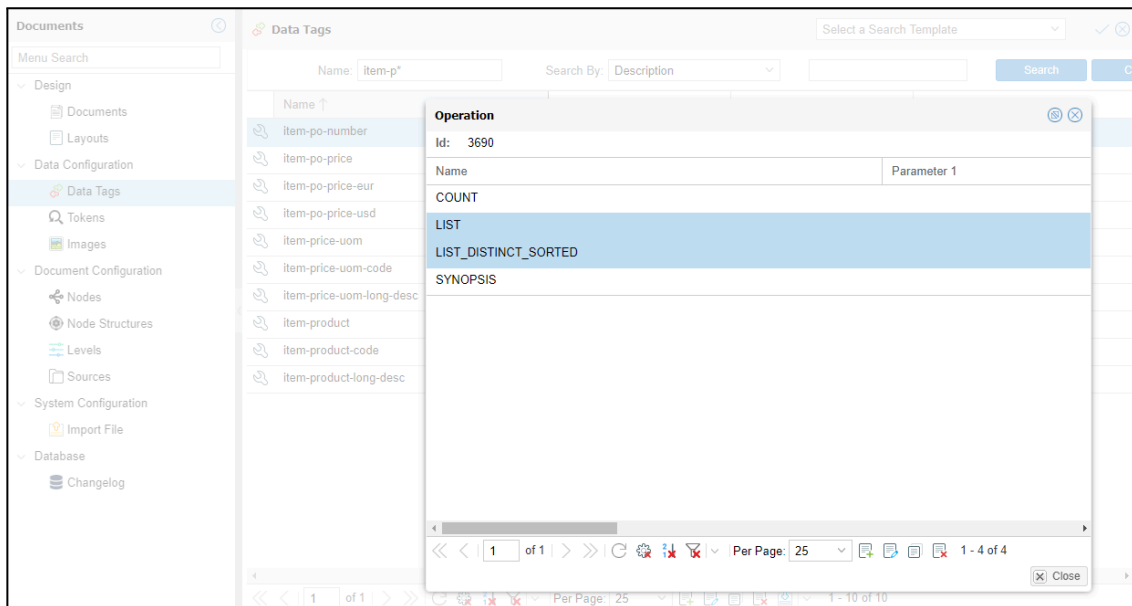
New List Operations

For item lists, such as lists of PO numbers, invoice numbers, and order numbers, new list operations are available. There are two list operations:

- List. Shows the raw details in a list on the document, including blanks, nulls, and duplicates.
- List Distinct Sorted. Distinctly lists the details, excluding blanks, nulls, and duplicates.

Fig. 4

List and List Distinct Sorted Operations



Technical Enhancements

- For extended Web UI customization, a new Plugin Framework for Java (PF4J) extension is now used in Docs. The plugin extends the way lists of Item or PackHeader objects are built. An example of a use case is to prefix all item descriptions with a value read from a system value defined in the plugin extension logic.
- To only show counts relevant to actual data, the Count operation now excludes null and empty values.

Base

JSON Export

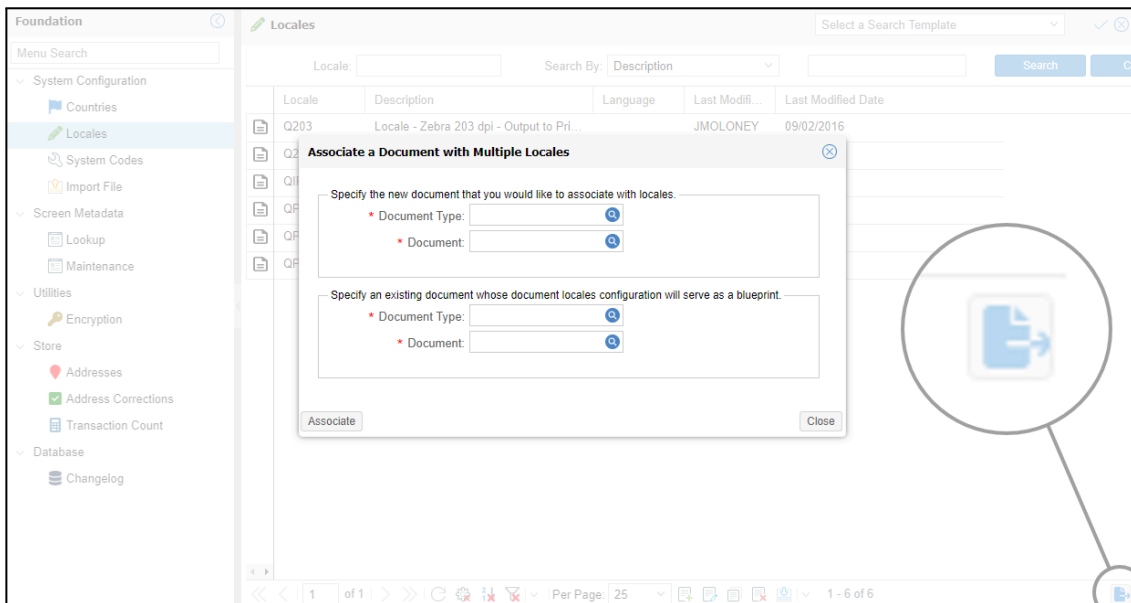
On any page where you can export JSON files, a new Export Selected for Deletion option allows you to export records in a JSON file with the action attribute in the file set to DELETE. If you import the file again and there are existing records in the system that match the data in the JSON file, the records in the system are deleted during the import. A message about the deletion appears in the Message Area of the screen. The cascading delete that is performed ensures that child records are also deleted.

Locales

The new Locales page (menu option FNDC_LO), allows you to associate a document with multiple locales. You can also maintain locales and locale documents on this page. To open the Associate a Document with Multiple Locales window, click the blue suboption icon in the lower right of the Locales page.

Fig. 5

Associate a Document with Multiple Locales



In this window, you can specify an existing document with configured locales to copy to a new document.

Address Verification (AV) Enhancements

- On the Configure Address Verification page (menu option CFGAV), a number of UX enhancements are available:
 - For clarity of purpose, the Maybe option—the option that enables address verification for workflows or desktop shipping (DTS)—is changed to Optional. If you select Optional for workflow or DTS, you can switch address verification on or off by selecting or clearing the Verify Address checkbox during manual address verification.

- The validation process for checking that AV workflow tasks are configured correctly is improved.
- Increased the number of partner roles that you can configure to use with AV.
- Improved how the Overall Address Verification Status workflow task is set when AV is not enabled.
- Fixed issues with AV not running when a shipment is created or copied in Workflow.

Transportation Execution (TE)

Transit Time, Non-Transit Days, and Delivery Allowed Days

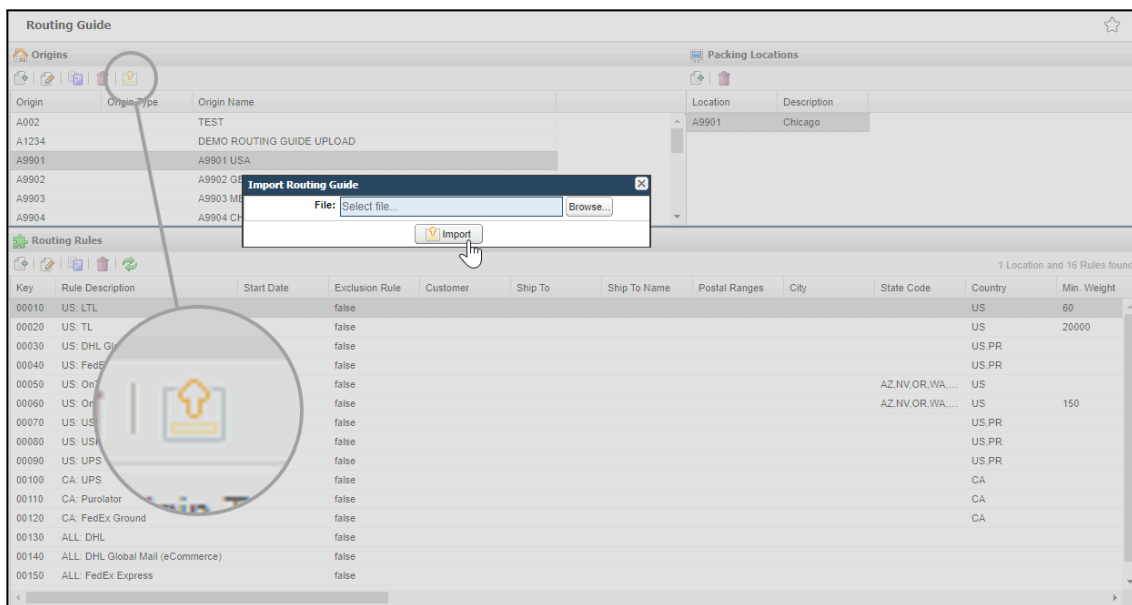
The new Transit Time page (menu option TE_RN) displays transit times for non-integrated carrier services. The new Non-Transit Days page (menu option TE_TR) displays the non-transit days and delivery-allowed days saved in the system. This data is used to calculate the estimated time of arrival (ETA) when processing shipments for non-integrated carriers. These new pages, along with the Region Zones and Zone Classifications screens, are accessible from the Menu Search and the main menu, under the Transportation Analyst role menu.

Routing Guide Upload

The Routing Guide Import button on the Origins area of the main Routing Guide screen allows you to upload an .xlsx file containing a Routing Guide for the selected origin. The file must be in a particular format.

Fig. 6

Import Routing Guide Rules From an Excel File



Web UI Updates

The v20.4 release includes fixes from Web UI patches 9.0.7 to 9.0.10 inclusive.

- Resolved an issue with SMTP email sending that can arise when multiple recipients are involved.

- Ensured that the appropriate skin is applied to portals, such as DEM, especially for users authenticating through SAML SSO.
- Corrected a data scrub issue where the results may not be consistent with the ad hoc results.
- Added support for specifying a universal naming convention (UNC) path for storing document images, which is essential for environments with multiple GTTE application servers.
- Fixed a concurrency problem causing incorrect carrier labels to print when multiple users perform actions simultaneously in the manifest task.
- Enhanced the Shipment Inquiry page to include tracking numbers in exported Excel files.
- When creating new carriers through the Maintain Carriers page, they are now only considered for End of Day operations at relevant packing locations, rather than all locations.

Transportation Execution - Global Carrier Network

QAD GTTE v20.4 is released with S49, which provides a number of enhancements and fixes to the way the solution connects with an expanded list of carriers.

Introduction

These release notes include information about the latest QAD GTTE Transport Execution Global Carrier Network fixes and changes. These changes may affect the way you use QAD GTTE Transport Execution.

Routing Guide

- To determine if the shipment has changed between one iteration of the routing guide and another, you can now store some of the key characteristics of the shipment in a virtual field.

For more information on the Routing Guide, see the Transportation Execution section of the [QAD GTTE online help](#).


General Enhancements



HTTP/HTTPS communication


- You can now disable the Content-Length header for requests.


Carrier-Specific Enhancements




This release offers support for a number of additional carrier-specific features.




| Carrier | | Note |
|-----------|-------------------------------------------------------------------------------------|-------------------------------------------------------------------|
| AGX Group |  | See Carrier Functionality Guide for more details on this carrier. |


| | | |
|------------------------------------|-------------------------------------------------------------------------------------|------------------------------------------------------------------------------------------------------------------------------------------------------------------------------------------------|
| Amazon UK |  | See Carrier Functionality Guide for more details on this carrier. |
| ATS | | <p>Mapping</p> <ul style="list-style-type: none"> + The system now sends the Reference fields in a different preferred sequence in the end-of-day file. |
| Australia Post / Star Track | | <p>Communication</p> <ul style="list-style-type: none"> + Support for XTTRANSF communication to the carrier API. |
| Bring | | <p>Services</p> <ul style="list-style-type: none"> + Optional Service Point + Norway Domestic services + Home Delivery services |
| Canada Post | | <p>Services</p> <ul style="list-style-type: none"> + Expedited Plus service <p>Label</p> <ul style="list-style-type: none"> + Carbon Neutral logos |
| Cardinal | | <p>Communication</p> <ul style="list-style-type: none"> + SFTP |
| CBL | | <p>Communication</p> <ul style="list-style-type: none"> + You can now email the EOD file. |
| Celeritas (Spain) |  | See the Carrier Functionality Guide for more details on this carrier. |
| Chronopost | | <p>Mapping</p> <ul style="list-style-type: none"> + The Routing Code field in the EOD file is 5 characters long. Previously, it was 4 characters long. |
| Couriers Please | | <p>Communication</p> <ul style="list-style-type: none"> + SFTP |
| Dachser | | <p>Mapping</p> <ul style="list-style-type: none"> + You can now use the KUTX segment of type ZU to output specific reference types. |
| Danske Fragtmænd | | <p>Engine</p> <ul style="list-style-type: none"> + Support for a different Routing API call |



| | | |
|---------------------------------|-------------------------------------------------------------------------------------|----------------------------------------------------------------------------------------------------------------------------------------------------------------------------------------------------------------------------------------------------------------------------------------------------------------------------------------------------------------------------------------------------------------------------------------------------------------------------------------------------------------------------------------------------------------------------------------------------------------------------------------------------------------------------------------------------------------------------------------------------------------------------------------------------------|
| | | <p>Mapping</p> <ul style="list-style-type: none"> + Support for package types C10 and PT1 |
| DB Schenker | | <p>Engine</p> <ul style="list-style-type: none"> + On-the-fly consolidation + The SSCC tracking number is extended to handle different lengths of SSCC prefix (Company ID). <p>Service</p> <ul style="list-style-type: none"> + Premium service for Germany domestic <p>Routing</p> <ul style="list-style-type: none"> + New routing data structure for Germany origin <p>Label</p> <ul style="list-style-type: none"> + Minor changes to the label macro based on carrier feedback <p>Mapping</p> <ul style="list-style-type: none"> + The end-of-day file schema is upgraded to IFTMIN D01B v1.3. + The descriptions mapped for Lithium Battery UN codes are extended. |
| DB Schenker France | | <p>Routing</p> <ul style="list-style-type: none"> + Includes the Belt ID in the search for the routing code for international services |
| DHL eCommerce (Europe) |  | See the Carrier Functionality Guide for more details on this carrier. |
| DHL eCommerce (US) | | <p>Engine</p> <ul style="list-style-type: none"> + Changes applied to the package dimension limits allowed for different services <p>Services</p> <ul style="list-style-type: none"> + Parcel Select Lightweight is treated as a Parcel Select service. <p>Label</p> <ul style="list-style-type: none"> + Data Matrix barcodes on Dangerous Goods shipments. |
| DHL Express EDI (DHL TD) | | <p>Communication</p> <ul style="list-style-type: none"> + XTTRANSF communication to the carrier Routing API. |

| | | |
|--------------------------------|-------------------------------------------------------------------------------------|-------------------------------------------------------------------------------------------------------------------------------------------------------------------------------------------------------------------------------------------------------------------------------------------------------------------------------------------------------------------------------------------------------------------------------------------------------------------------------------------------------|
| | | <p>Engine</p> <ul style="list-style-type: none"> + Paperless Webservice API |
| DHL Express (MyDHL API) | | <p>Engine</p> <ul style="list-style-type: none"> + Revisions based on feedback from the carrier during the first implementation of this integration. |
| DHL Express (XML PI) | | <p>Engine</p> <ul style="list-style-type: none"> + The system now returns the Waybill number as the Master Tracking Number for BBX consolidated child shipments <p>Mapping</p> <ul style="list-style-type: none"> + Support for a third-party account for child shipments of a BBX consolidation movement + Support for a configurable type for the receiver reference field + Archive labels field can be suppressed for NDS shipments |
| DHL Freight Nordics | | <p>Engine</p> <ul style="list-style-type: none"> + Revisions based on feedback from the carrier during the first implementation of this integration |
| DHL Parcel Benelux | | <p>Engine</p> <ul style="list-style-type: none"> + Revisions based on feedback from the carrier during the first implementation of this integration |
| DHL Parcel Spain | | <p>Engine</p> <ul style="list-style-type: none"> + Prevent on-the-fly consolidation for B2C services |
| Dicom | | <p>Communication</p> <ul style="list-style-type: none"> + SFTP |
| DPD France API |  | See the Carrier Functionality Guide for more details on this carrier. |
| DPD France (legacy) | | <p>Communication</p> <ul style="list-style-type: none"> + SFTP |
| DPD Ireland | | <p>Communication</p> <ul style="list-style-type: none"> + XTTRANSF communication to the carrier API |

| | | |
|------------------------------|-------------------------------------------------------------------------------------|-----------------------------------------------------------------------------------------------------------------------------------------------------------------------------------------------------------------------------------------------------------------------------------------------------------------------------------------------------------------------------------------|
| DPD Meta API | | <p>Engine</p> <ul style="list-style-type: none"> + Saturday Delivery and COD are characteristics applicable to on-the-fly consolidation criteria <p>Mapping</p> <ul style="list-style-type: none"> + Prevent Dangerous Goods information mapping for Limited Quantity shipments + Support for a configurable Importer name/address |
| DPD Poland | | <p>Mapping</p> <ul style="list-style-type: none"> + Saturday Delivery service + Support for a configurable Test account number mapping |
| DSV | | <p>Mapping</p> <ul style="list-style-type: none"> + Support for multiple order numbers to be passed as references in the EDI file for a consolidated shipment + Net Weight field for customs-applicable shipments |
| Endicia | | <p>Engine</p> <ul style="list-style-type: none"> + Correction for the interpretation of the postage value returned from the Endicia API response |
| Envialia | | <p>Engine</p> <ul style="list-style-type: none"> + The system now stores the routing data in an alternative database field to accommodate the growth in the length of this data. |
| Evri (Hermes UK) | | <p>Engine</p> <ul style="list-style-type: none"> + Removed the weight limit to allow Light and Large processing <p>Label</p> <ul style="list-style-type: none"> + No longer output the ETA date to the 2-D barcode + Correction to the formatting of the monetary value output to the 2-D barcode |
| Expeditors |  | See the Carrier Functionality Guide for more details on this carrier. |
| FedEx Poland Domestic |  | See the Carrier Functionality Guide for more details on this carrier. |
| FedEx Rest API |  | Initial version of this integration |

| | | |
|--------------------------|-------------------------------------------------------------------------------------|------------------------------------------------------------------------------------------------------------------------------------------------------------------------------------------------------------------------------------------------------------------------------------------------------------------------------------------------------------------------------------------------------------------------------------------------------------------------------------------------------------------------------------------------------------------------------------------------------------------------------------------------------------------------------------------------------------------------------------------------------------------------------------------------------------------------------------------------------------------------------------------------------------------------------------------------------------------------------------------------------------------------------------------|
| FedEx | | <p>FSMS: Integration</p> <ul style="list-style-type: none"> + Blocks the use of COD for US destinations + No longer applies ETD to IPD shipments + Maps the correct Document Type for documents of type Other in ETD mapping + Allows the configurable IPD charge table to be used during the Rate process, in addition to its use in the Ship process <p>See the Carrier Functionality Guide for more details on this carrier.</p> <p>WebServices: Integration</p> <ul style="list-style-type: none"> + Map the correct number of decimals for item weights so that the total weight of the items does not exceed the weight of the package + The system now consolidates multiple packages of the same characteristics to be consolidated in the rate request to reduce the size of the message + The mapping now handles ID8000 in Dangerous Goods requirements <p>See the Carrier Functionality Guide for more details on this carrier.</p> |
| Fleet Optics |  | See the Carrier Functionality Guide for more details on this carrier. |
| Geodis France API |  | See the Carrier Functionality Guide for more details on this carrier. |
| GLS Spain (Legacy) (ASM) | | <p>Communication</p> <ul style="list-style-type: none"> + SFTP |
| Hellmann Nightstar | | <p>Label</p> <ul style="list-style-type: none"> + Support to output a location-specific indicator on the label for a negotiated service contracted with the carrier |
| ICS Courier | | <p>Services</p> <ul style="list-style-type: none"> + No Signature Required service |
| JAS |  | See the Carrier Functionality Guide for more details on this carrier. |
| K&N France | | <p>Communication</p> <ul style="list-style-type: none"> + SFTP |
| K&N Europe | | <p>Engine</p> <ul style="list-style-type: none"> + On-the-fly consolidation |

| | | |
|------------------------------|-----------------------------------------------------------------------------------|----------------------------------------------------------------------------------------------------------------------------------------------------------------------------------------------------------------------------------------------------------------------------------------------------------------------------------------------------------------------------------------------------------------------------------------------------------------------------------------------------------------------------------------------------------------------------------------------------------------------------------------------------------------------------------------------------------------------------------------------------------------------------------------------------|
| Mainfreight |  | See the Carrier Functionality Guide for more details on this carrier. |
| New Zealand Couriers | | <p>Communication</p> <ul style="list-style-type: none"> + SFTP |
| Nox Innight (Benelux) | | <p>Communication</p> <ul style="list-style-type: none"> + SFTP |
| Optima | | <p>Engine</p> <ul style="list-style-type: none"> + Changed how the expiration of security tokens is handled <p>Label</p> <ul style="list-style-type: none"> + The system does not output the Routing code if it contains an “unknown” (question mark) value. |
| Post Italiane | | <p>Mapping</p> <ul style="list-style-type: none"> + Applied a change for the mapping of the main shipment reference |
| Postnord | | <p>Engine</p> <ul style="list-style-type: none"> + The system now splits the end-of-day batch into separate batches if the maximum number of shipments (999) or packages (999) in a batch is exceeded. + The system now blocks the shipment from processing if the GS1 number is not created successfully for Groupage service. <p>Services</p> <ul style="list-style-type: none"> + MaxiLetter and Tracked Letter DK for Denmark origin <p>Label</p> <ul style="list-style-type: none"> + Alternative Return address <p>Mapping</p> <ul style="list-style-type: none"> + Alternative Return address + The system now maps a ZH9 value for parcel shipments to Sweden that exceed 20 Kg. |
| Raben Group | | <p>Mapping</p> <ul style="list-style-type: none"> + Extended the field mappings for Dangerous Goods requirements |

| | | |
|-------------------------------|-----------------------------------------------------------------------------------|---------------------------------------------------------------------------------------------------------------------------------------------------------------------------------------------------------------------------------------------------------------------------------------------------------------------------------------------------------------------------------------------------------------------------------------------------------------------------------------------------------------------------------------------------------------------------------------------------------------------------------------|
| Redur | | <p>Communication</p> <ul style="list-style-type: none"> + SFTP |
| Royal Mail (schema v4) |  | See the Carrier Functionality Guide for more details on this carrier. |
| SMC3 | | <p>Rating</p> <ul style="list-style-type: none"> + Now correctly parsing the miscellaneous charges such as Floor Minimum |
| Speedlink |  | See Carrier Functionality Guide for more details on this carrier. |
| Susa | | <p>Communication</p> <ul style="list-style-type: none"> + SFTP |
| Swiss Post | | <p>Services</p> <ul style="list-style-type: none"> + Business Reply Mail (Return/GAS) <p>Label</p> <ul style="list-style-type: none"> + Applied correction for quiet zone around the VAS barcodes |
| TGE (Toll) | | <p>Engine</p> <ul style="list-style-type: none"> + Support for an email to be sent when a shipment is voided/canceled <p>Label</p> <ul style="list-style-type: none"> + Support for outputting references on the label <p>Manifest</p> <ul style="list-style-type: none"> + Corrected the PDF-417 barcode data <p>Mapping</p> <ul style="list-style-type: none"> + Extended the support for Dangerous Goods field mapping + Corrected the mapping of the date-time to more accurately reflect the Australian timezone of the shipper |
| TNT Australia | | <p>Rating</p> <ul style="list-style-type: none"> + The Production rating API now uses the RTTNET version |
| TNT Express | | <p>Mapping</p> <ul style="list-style-type: none"> + Correction applied for the recipient EORI mapping |

| | | |
|----------------------------|--|----------------------------------------------------------------------------------------------------------------------------------------------------------------------------------------------------------------------------------------------------------------------------------------------------------------------------------------------------------------------------------------------------------------------------------------------------------------------------------------------------------------------------------------------|
| TNT France Domestic | | Communication + SFTP |
| TPN | | Engine + On-the-fly consolidation |
| Trans-o-flex | | Label + Alternative label macro layout |
| UB Send | | Mapping + Changes applied to how reference values are mapped to the API request |
| UPS | | Services + Support for India origin Engine + Removed the restriction that the WorldEase account can not be the same as the shipper account + Now blocks the shipping of Dangerous Goods to Alaska, Hawaii, and Puerto Rico for Ground services Label + WorldEase single-label Mapping + Support for *QAID2 segment for EORI and related information WorldEase Invoice + Applied changes to accommodate Letter page-size margins + Added support to print the EORI number |
| UPS SCS Partsflow | | Communication + Added support for SFTP |
| Wahl | | Label + The system now outputs address lines 2 and 3 of the recipient. |

Highway

The Highway version released with QAD GTTE v20.4 is 11.0.0. The Highway database schema has not changed in this release.

- FTP library edtFTPj/PRO is updated to version 7.6.0, enhancing support for TLS ciphers.
- You can now disable the ssh-dsa algorithm when configuring an FTP connection.
- HTTP Basic authentication added to the endpoints that are used to feed FBAP and DEM updates from carriers.

Content Subscriber

The Subscriber version released with QAD GTTE v20.4 is 6.1.0.

Enhancements

- The Subscriber Agent is now able to load JSON data files that comply with the format generated from exporting data from certain portal pages, such as DEM, in the GTTE application. This means that any changes to DEM code conversions can now be subscribed to and automatically installed by the Subscriber Agent.

Minor Fixes and Security Changes

- XML files that start with a number are now supported.

Technical Details

Extensions

- Initial Extensions microservice for certain UI customizations. Provides a space where bespoke standalone pages can be developed for a customer in a way that is not disruptive to the receipt of Web UI updates.
- New plugin project to allow customizations to Java logic at specific plug-in points. This works similarly to the plugin concept available for Progress code.

Java Version

The Java version used by Web UI is 17.

- Java runtime upgraded to Temurin-17.0.9+9.
- All components are compiled for Java 17 compatibility. The components no longer work with earlier versions of Java.

OTM Integration

- Configuration of the OTM adapter now allows the setting of properties based on the data received in the request from OTM. Use the new property `precision.otm.property.qualified` to define a qualifier property. When a request is received from OTM, the element value that this property references is part of the key that is used to determine the value of other properties.

This means you can set the return cost type based on the value of the shipment source location.

```
precision.otm.property.qualified=SHIPMENT.SOURCE.LOCATION
precision.rateshop.item.currency=USD
precision.rateshop.item.currency.COB.CA1=CAD
precision.rateshop.return.cost.type=BUY
precision.rateshop.return.cost.type.COB.CA1=SELL
```

QZ Tray Integration

- The latest version of QZ Tray—version 2.2.3—is supported.
- A scale communication issue, where multiple retries are needed before the weight is retrieved from the scale, is fixed.
- The need to specify the version of QZ Tray being used as part of the configuration in GTTE is removed.

Transaction Counting

- This version updates myqadcloud.qad.com with monthly transaction counts for the TE, DEM, and Trade Compliance modules. A scheduled job runs at the beginning of every month to update myqadcloud.qad.com with transaction counts for each of the last 12 months and the totals for this period.

Fig. 7

myqadcloud.qad.com Displaying Transaction Count Information Provided By the New Counting App

| General | User Counts | Logo | Environments | Contact Info | Communications | Connectivity | Cost By Region | DR | TMS | File Store |
|--------------------------------------------------------------------|-------------|---------|--------------|--------------|----------------|--------------|----------------|----|-----|------------|
| Last 12 Months Report | | | | | | | | | | |
| Report last run date | | | | | | | | | | 01/19/24 |
| Last 12 months Total # Transportation Execution (TE) | | | | | | | | | | 100 |
| Last 12 months Total # Global Trade Management (GTM) international | | | | | | | | | | 1,020 |
| Last 12 months Total # Global Trade Management (GTM) domestic | | | | | | | | | | 359 |
| Last 12 months Total # Delivery Exception Management (DEM) | | | | | | | | | | 0 |
| Last 12 months Total # Trade Compliance (TC) | | | | | | | | | | 1,410 |
| Monthly Breakdown Report | | | | | | | | | | |
| Year/Month | TE | GTM int | GTM dom | DEM | TC | | | | | |
| 2023 January | 0 | 1 | 0 | 0 | 0 | | | | | |
| 2023 February | 0 | 0 | 6 | 0 | 0 | | | | | |
| 2023 March | 0 | 3 | 0 | 0 | 0 | | | | | |
| 2023 April | 0 | 61 | 0 | 0 | 0 | | | | | |
| 2023 May | 0 | 0 | 0 | 0 | 0 | | | | | |
| 2023 June | 1 | 0 | 1 | 0 | 0 | | | | | |
| 2023 July | 0 | 0 | 0 | 0 | 0 | | | | | |
| 2023 August | 52 | 136 | 111 | 0 | 353 | | | | | |
| 2023 September | 34 | 488 | 191 | 0 | 886 | | | | | |
| 2023 October | 4 | 141 | 25 | 0 | 73 | | | | | |
| 2023 November | 1 | 92 | 19 | 0 | 49 | | | | | |
| 2023 December | 8 | 98 | 6 | 0 | 49 | | | | | |

Web Security

- The majority of microservices are using Spring Boot 3.2.
- A new stricter content security policy (CSP) is available for a number of pages.
- ActiveMQ is upgraded to 5.17.6 to address [CVE-2023-46604](#).
- Tomcat is upgraded to 9.0.83 to address a number of [CVEs](#).