



Precision Software

Release Notes **PRECISION 2009 R01**

21st November 2011
v1.0

Document Control

Conformance Standard

This Statement has three levels of conformance represented by the words:

Must / shall / will:

Denotes mandatory requirements.

Should:

Denotes requirements, which are preferred but may be waived by Precision, with good reason.

May:

Denotes requirements, which are considered useful, but are not mandatory and may be waived with discretion.

Change Control

This document is the responsibility of the Precision Project Manager. Prior to the approved release, requests for change are sent to the Author via the Microsoft Document review process. They are reviewed and either accepted or rejected by the author. It is subject to formal change control after the initial approved release (i.e.: version 1.0), and agreed changes are recorded in the Change Summary Section of the document.

Issue Control

Nr.	Description	Date	By whom
1.0	New Document – First Release	11.11.21	PMU

Cross Reference

N/A

Abbreviations Used

PRECISION / PSL: Precision Software, a division of QAD Inc.

© 2010 Precision Software, a division of QAD Inc.

Precision Software products are copyrighted and all rights are reserved by Precision Software, a division of QAD Inc.

This document is copyrighted and all rights are reserved. No part of this document may be reproduced, transmitted, adapted, translated or electronically stored without the prior written consent of Precision Software, a division of QAD Inc.

Contents

- INTRODUCTION.....4
- ENHANCEMENTS.....5
 - 64-bit Support5
 - Trade Compliance (TRC)5
 - Package Exception Management (PEM)6
- TMS S30 – S33 SUMMARY7
 - SMC³ Integration7
 - SOA / XML Messages7
 - Carrier Network8
- WEB UI 4.02 TO 4.4.3 SUMMARY9
 - Mobile Applications.....9
 - Workflow.....10
 - Scan, Pack and Ship.....10
 - Automated Export System (AES)11
- FIXES.....12
 - P2009-R00-F01 12
 - P2009-R00-F02 12
 - P2009-R00-F03 12
 - P2009-R00-F04 12
 - P2009-R00-F05 12
 - P2009-R00-F07 12
 - P2009-R00-F08 12
 - P2009-R00-F09 12
 - P2009-R00-F15 12
 - P2009-R00-F19 12
 - P2009-R00-F20 13
 - P2009-R00-F21 13
 - P2009-R00-F22 13
 - P2009-R00-F23 13
 - P2009-R00-F26 13

Introduction

The PRECISION 2009 R01 release is a replacement for PRECISION 2009 R00 release. It is a rollup of enhancements, carrier integrations and fixes included in individual component versions since PRECISION 2009 R00. These release notes provide information on the main differences between the releases.

The table below shows the versions of the components contained within the release;

Product	Version	Description
PRECISION 2009	R01	
Base		
Global Trade Management (GTM)		
Trade Compliance (TRC)		
Transportation Management System (TMS)	S33	
Web UI	4.4.3	
Package Exception Management (PEM)		
Tools		
Highway	3.1.14.1	A2A, B2B integration server
ePage	2.4.3	WYSIWYG form design tool
PRECISIONView	5.7.0	PCL document viewer
eCustoms (Electronic Integration)		
AES	R06	US Exports
AEP	R02	Irish Exports
Atlas	R06	German Exports
Integrations		
Oracle E-Business Integration	O08	Tightly coupled integration to Oracle EBS
JD Edwards Integration	J15	Tightly coupled integration to JD Edwards

The PRECISION Product Lifecycle and Compatibility Guide contains information on the current version of all components and their compatibility with overall PRECISION release levels.

Enhancements

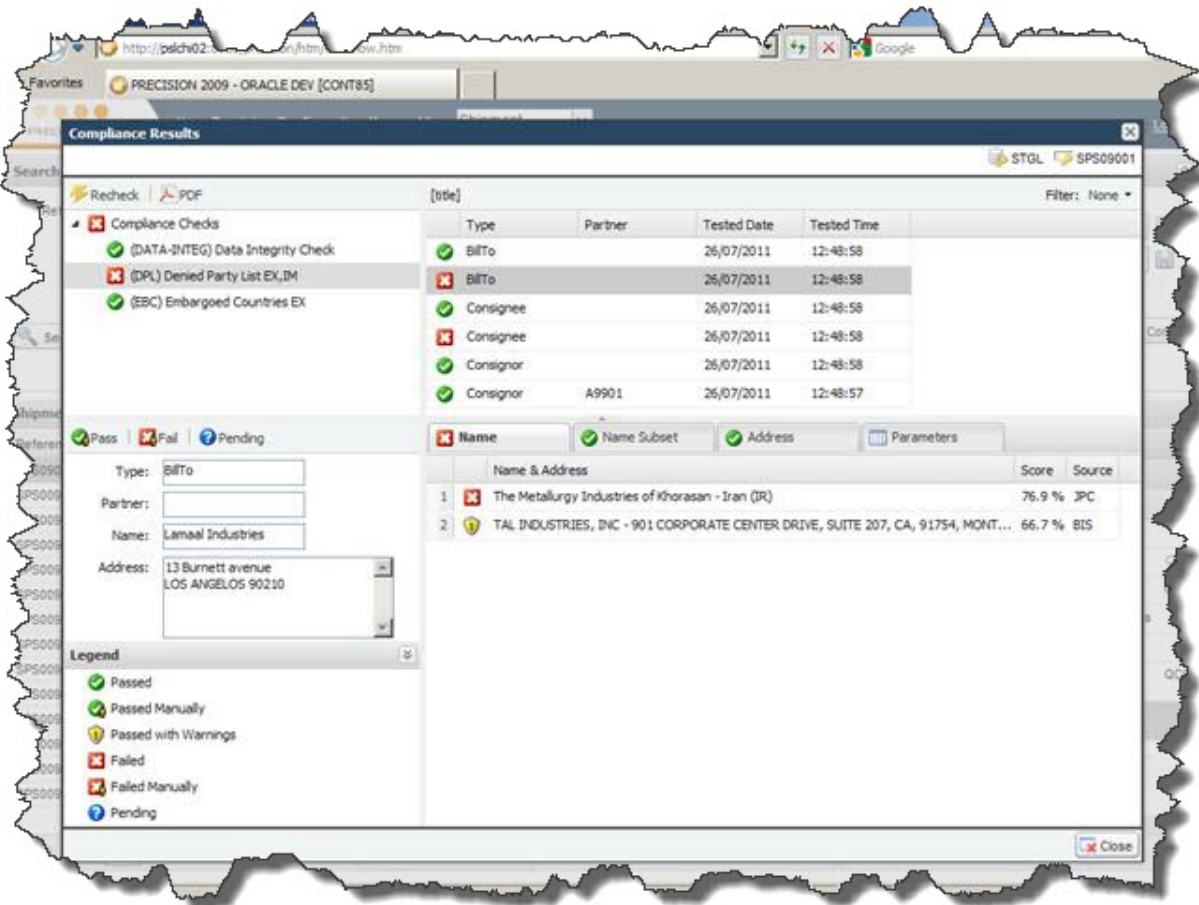
64-bit Support

This is the first release of PRECISION that supports deploying the Application Server on a Windows 64-bit platform (deploying the database on a 64-bit platform was already supported). The application can be deployed on Windows Server 2008 R2 64-bit.

It is still a 32-bit application however by allowing it to be deployed on 64-bit platform the system memory restrictions that previously limited the number of users or processes that could be started on a single server have been removed.

Trade Compliance (TRC)

Compliance Screening has been integrated with the Web UI Workflow including a new results screen for reviewing and managing results. It is possible to configure Workflow to run compliance as part of the Workflow and access the results screen as a Workflow task or from a button on the screen. The Compliance status (Passed, Failed, Manually Passed etc.) has been added as one of the filter criteria on the Workflow search panel making it easier to identify and work with failures.



The existing Export Licensing check (EXLI) has been expanded to support Permits and Guarantees. A Permit/Guarantee differs from a License in that it is typically not restricted by Value or Quantity and there is a new option for adding these to the system. The system can be configured to identify Commodities or Products requiring a Permit/Guarantee and Compliance will fail if one does not exist. The Permit/Guarantee can be associated with Products or Commodity codes or can be assigned to item lines at shipment time.

The SOA messages supporting Shipping Execution have been extended for tighter integration with Compliance.

Package Exception Management (PEM)

TNT has been added as a supported carrier for status messages.

In addition to the Carrier specific integrations the system has been extended to cater for generic EDI status messages;

- EDIFACT IFTSTA (v. D96A)
- ANSI X12 214 (v. 4010)

This allows any carrier who can support these messages to be integrated with PEM.

TMS S30 – S33 Summary

There are detailed Release Notes available for TMS S30, S31, S32 and S33. This is a high level summary of the changes.

SMC³ Integration

The application supports various different Rate Tariffs including Yellow Freight and Czarlite for US domestic shipping. The way in which this operated previously was that the customers would buy the Tariffs (from SMC³) and Precision would upload these Tariffs into the customer's PRECISION instance as part of the implementation. The customer then configured their carriers and setup discounts or uplifts on the base Tariffs. With this approach the customer had to purchase Tariffs based on shipping origins and as additional shipping origins were added more content would need to be acquired and uploaded.

There is a second option now available and rather than loading the Tariffs directly into the PRECISION instance the system will communicate with SMC³ in real-time to retrieve the base rates. It integrates with the SMC³ RateWare XL product.

The customer will sign an agreement with SMC³ for access to the Tariffs for their Shipping Origins and can request additional Tariffs easily. The discounts and uplifts for the specific carriers will continue to be maintained in PRECISION.

SOA / XML Messages

The messages have been extended to

- Allow multiple language versions of addresses to be provided. This support scenarios were the address on the label needs to appear in one language and the address to be provided electronically to the carrier needs to be in a different language (a lot of carriers restrict the characters that they can accept electronically to English carriers).
- Allow Serial numbers to be sent and returned. The Serial Numbers on the Shipment can be provided in the ShipShipment and CreateShipment messages. The Serial Numbers captured in PRECISION can be returned in the ProcessSPSResponse message.
- Allow Compliance screening to be more tightly integrated with TMS messages. The Compliance engine can be triggered as a Web UI Workflow task upon receipt of a ShipShipment or CreateShipment message and the result returned in the ProcessSPSResponse. The ProcessShipment has two new actions; COMPLIANCE-CHECK which initiates compliance screening and returns the result in the ProcessSPSResponse and COMPLIANCE-STATUS which returns the current compliance stats in the ProcessSPSResponse message.

Carrier Network

There are changes and additions to the Carrier Network with every PRECISION TMS release and these are detailed in the Release Notes provided with the releases.

The following carrier integrations have been added, modified or re-certified;

Carrier	Carrier	Carrier
BAX Global	DHL (US)	No Limit
Calberson	DHL Day Definite (Non US)	Swedish Post
Chrono Express	DHL Time Definite (Non US)	TNT
Ciblex	DHL Securicor	TNT Innight
City Link	DPD	Trans-o-flex
Dachser	FedEx	UPS
DB Schenker	Geodis	USPS
DHL (CA)	Kiala	Wim Bosman

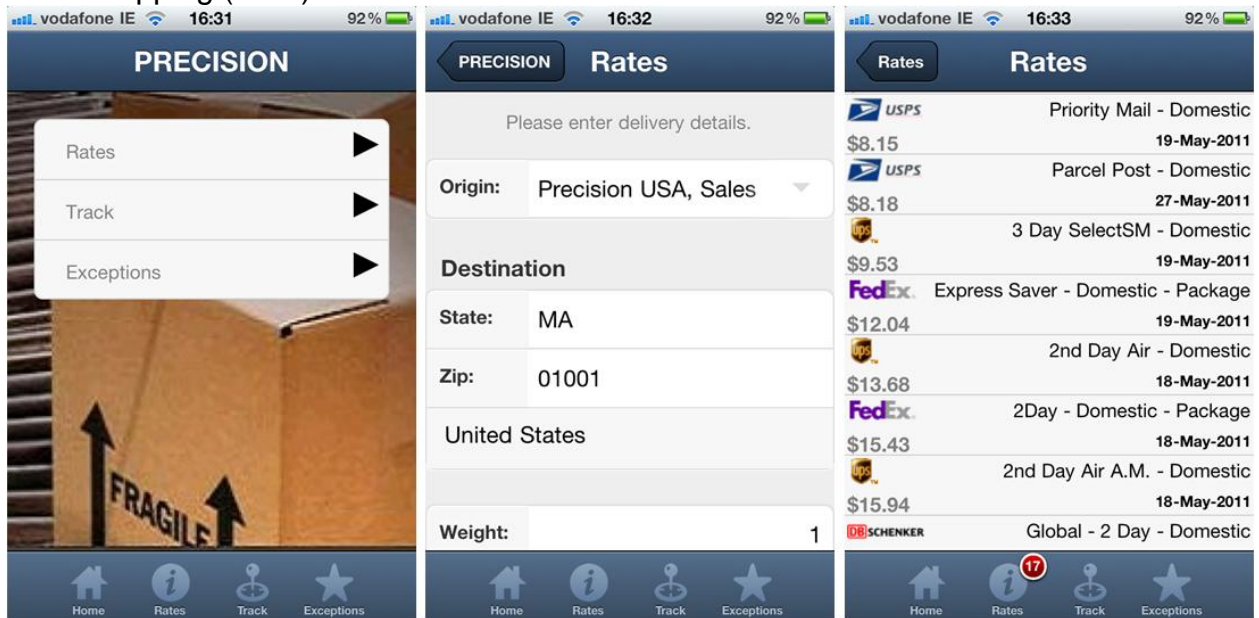
Web UI 4.02 to 4.4.3 Summary

There are detailed Release Notes available for Web UI 4,4, 4.3 and 4.2. This is a high level summary of the changes.

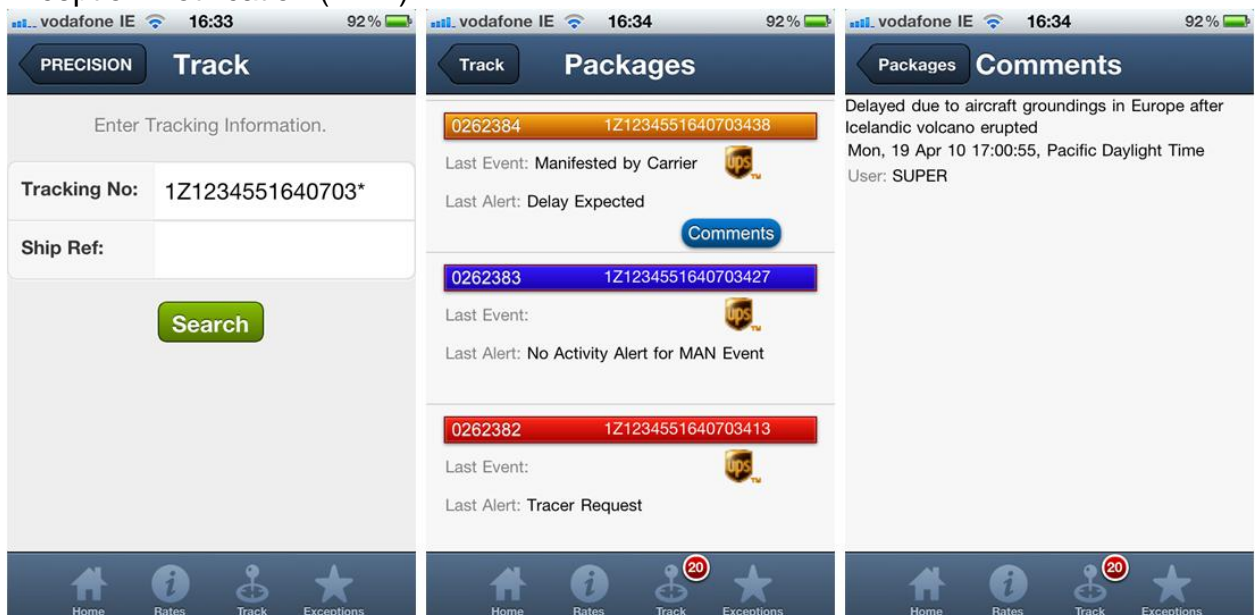
Mobile Applications

There have been Mobile specific pages made available for

- Rate Shopping (TMS)



- Tracking Shipments (PEM)
- Exception Notification (PEM)

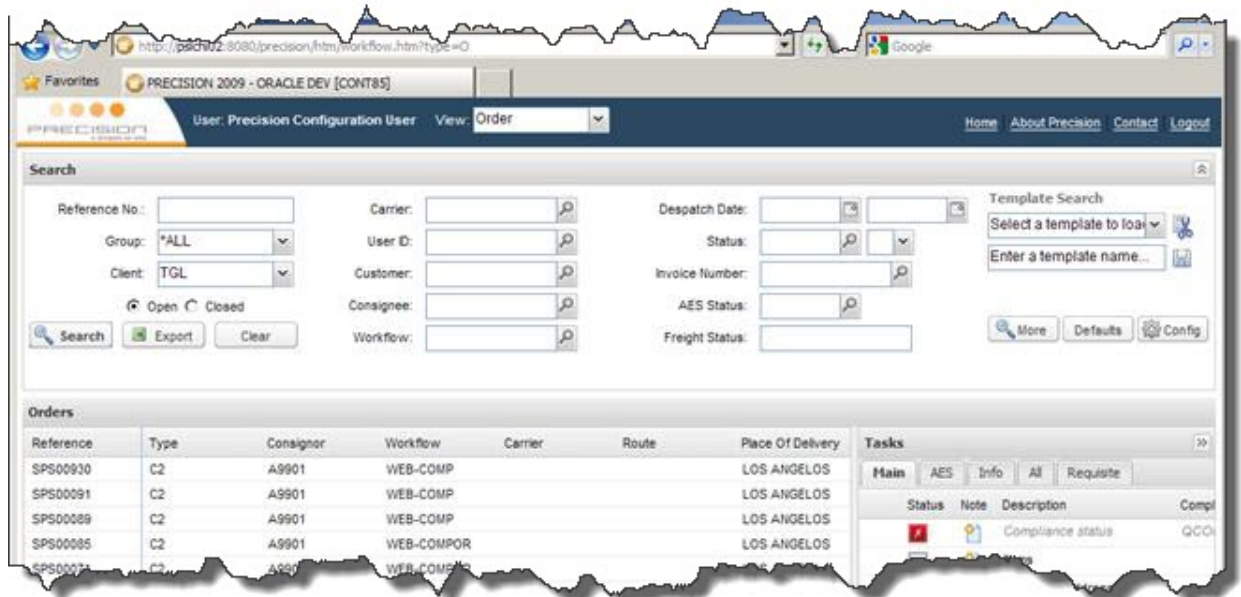


and these have been designed for use on Smart Phones.

Workflow

The Search/Filter feature has been extended to allow the fields available to be shown or hidden. There have been additional filter fields added, the date entry has been changed to use a single input for the date with an improved selector and in the case of status fields it is possible to include a qualifier for the search, equal to, greater than or less than.

The Workflow portal can now support different transaction types, rather than only Shipments. This does not include Loads.



There were improvements to existing Workflow Tasks and additional Tasks provided;

- Address Overrides
- Apply Rules
- Rate Shopping
- Shipment Manifesting (aka Carrier Labelling)
- Automated Export System (AES) management
- Compliance Results management

Scan, Pack and Ship

This functionality allows a Shipment to be processed from packing to physical shipping from a single screen and was designed with high volume shippers in mind. It is highly configurable and would be tailored to meet specific customer needs.

- Access from the Menu or as a Workflow Task

- Pack item lines based on quantity, inners or outers
- Pack Lot controlled items
- Pack Serial controlled items, pre-defined Serial Numbers or Capture Serial Numbers during Packing
- Consolidate multiple transactions (e.g. Orders) onto a Shipment
- Partial Packing of transactions
- Optimised for working with Barcode Scanner
- Multiple methods for automatically creating and copying packs
- Manifest (generate tracking numbers, print labels, calculate shipping estimates) Shipments directly from the screen
- Call Workflow tasks for Shipments or Packs from configurable buttons or based on actions (e.g. Seal a Pack)

For those of you familiar with SHPINT option in the Windows UI this screen would be a replacement offering a lot more functionality than was previously available.

Automated Export System (AES)

The AES transmission can be managed from the Web UI. The relevant shipment information is visible and can be maintained from Workflow tasks and transmissions can be submitted. The AES status has been added as one of the filter criteria on the Workflow search panel making it easier to identify and work with failures.

The screenshot displays the AES web UI with the following details:

Form Fields:

- Nature of Transaction: OS - All Other Exports - complete information requir
- Currency: USD
- Mode of Transport: 40 - Transport by air
- Country: CN
- Vessel: [Empty]
- Port of Unlading: SHENZHEN
- Port of Exportation: ST. PETERSBURG
- Related Parties:
- Est Date of Export: 17/09/2011
- Est Date of Arrival: 21/09/2011
- Booking Number: [Empty]
- Routed: Non Routed
- AES Send Option: 2 - Pre Departure Filing
- Submission Allowed: Yes-CheckPartner
- ITN Number: X20110919000031
- Aes Status: 97 - Acpt Compliance
- Buttons: Save Details

Items Table:

Line	Product	Description	Qty	Price	Total	Currency
3		XC2V1000-4FGG456C	120 EA	70	8400	USD

Item Details:

- Product: [Empty]
- Description: XC2V1000-4FGG456C
- Classification Group: SCHB
- Commodity Code: 8542310000
- No. of Inners: 0
- No. of Outers: 0
- Price: 70 USD
- Ship Qty: 120 EA
- Gross Weight: 0
- Net Weight: 0
- Volume: 0
- Dimension: 0 0 0
- Country Of Origin: TW
- Hazmat Class: [Empty]
- Buttons: Save Item, Licence...

Footer: Validate And Transmit, Reset AES Transmission, Modify AES Transmission, Refresh Commodities, Downtime Citation, Close

Fixes

P2009-R00-F01 – Using "Force Loading" in INST screen would cause the removal of all XMBKTS0 records, affecting SPS End Of Day process and BK background processes. This has been fixed.

P2009-R00-F02 – When loading a content pack with lots of data XMLs (> 600 records) using INST option, the upload progress is displayed correctly up to a point when it stops. Although the upload might finish correctly and control is returned back to the user (notice the red back button is enabled), the user might not be confident the package loaded correctly. This has been fixed.

P2009-R00-F03 – When adding Shipments to Loads in the Windows UI the Shipments added were not visible on the screen (GRGS). This was reported on SQL Server platform only. This has been fixed.

P2009-R00-F04 – When the system is configured to automatically run workflow in Windows UI for users at or under a particular level (e.g. WORKFLOW / AUTOMATIC WORKFLOW ENTRY = 5) those users will receive a "Mismatched number of parameters passed to routine xtwfmnu1.w" error message at logon and will not be able to proceed any further. This has been fixed.

P2009-R00-F05 – When raising Tracer Requests and including valid email address, the user receives an error on Web UI indicating "Email could not be sent due to error: No attachment was found" and no email was sent. This has been fixed.

P2009-R00-F07 – On the Compliance Results screen in Windows UI an ActiveX error message was given when manually saving and overridden result by navigating through tabs
"Input blocking statement is invalid in event handler.
CtrlTree.TreeView.NodeClick. (5897)"
This has been fixed.

P2009-R00-F08 – PEM Tracer document. The "Delivered to Incorrect Address" tracer type not marking an "X" in the appropriate location on the form. This has been fixed.

P2009-R00-F09 – Cannot see the literals for other languages (apart from English). This has been fixed.

P2009-R00-F15 – During installation the UNIX loaddata batch script file does not load data for some tables due to table names being misspelled: PRDBAS0, PRDPND0, PRDQFL0, XMBPRD0, XMNPRD0, XTSTKS0. This has been fixed.

P2009-R00-F19 – When using single-signon with the Windows UI there was a password validation returned. This has been fixed.

P2009-R00-F20 – There were Highway exceptions generated, "java.io.CharConversionException: Not an ISO 8859-1 character: ?" when extended characters were included in messages. This has been fixed.

P2009-R00-F21 – Export licenses associated with shipment item lines were not being treated correctly by the Archiving and Data Migration Tools. This has been fixed.

P2009-R00-F22 – Cannot run sub-options of the TPH screen. The Program xttpflp.w was not found. This has been fixed.

P2009-R00-F23 – On SQL Server the following error was shown when accessing certain PEM options "Connection to type ORACLE was requested" This has been fixed.

P2009-R00-F26 – An occasional error on Microsoft SQL Server would cause the startup program to re-run (PROGRESS default behavior on STOP event) but without releasing resources e.g. JMS message being processed at the time would not be put back in the queue. The following error message would be seen in the log files

"Tried to access a record without a valid id. (6167)

01000: [Microsoft][ODBC SQL Server Driver][SQL Server]PSC-end"

This has been fixed.