



QAD Adaptive Applications

QAD GTTE Global Trade Release Notes

March 2025

These release notes include information about the latest QAD GTTE Global Trade features, enhancements, and fixes.

These changes may affect the way that you implement and use QAD GTTE. Review this document before proceeding with any changes to your installation.

Contents

Overview	3
New Functionality, Enhancements, and Fixes	4
Import Management	4
AI-Supported Product Classification Enhancements	4
Advanced Shipping Notice (ASN) and Buyer Consolidation	4
Imports Dashboard Updates	5
Reports	5
Translations	5
Workflow	6
Broker Discrepancies API Enhancements	6
Entry Discrepancy Review Workflow Task	8
FTN Check and Submit Task Updates	9
Items Task Enhancements	9
Workflow Transaction Search	10
Export Management	11
Shipment License Workflow Enhancements	11
Trade Compliance	11
Commodities	11
Resolved Issues	11
Product Details	11
Trade Compliance	11

Overview

Current QAD GTTE Global Trade Version: 2025.03.21

Release Date: March 2025

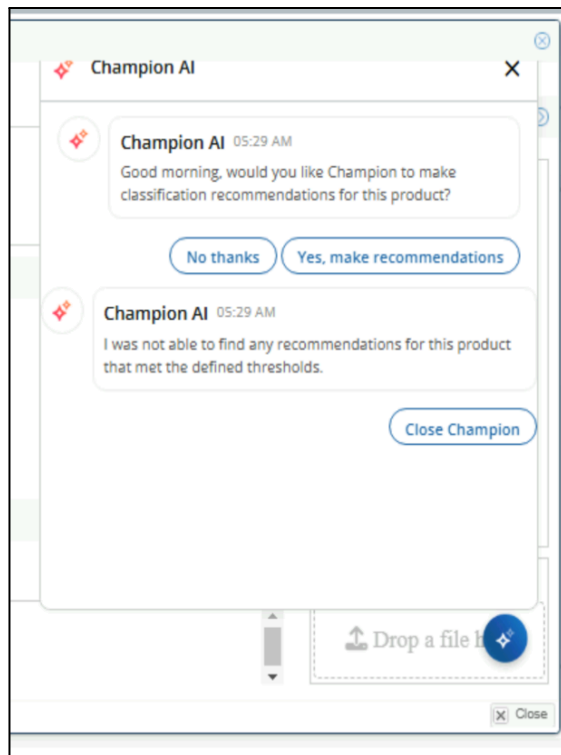
New Functionality, Enhancements, and Fixes

Import Management

The latest release is Imports Feature Update 10. The feature update contains a number of noteworthy enhancements.

AI-Supported Product Classification Enhancements

- For AI-supported product classification, the QAD Champion AI chat log now clearly states if it cannot find any classification recommendations for the selected product.



- Recommendation sorting is enhanced. When QAD Champion AI returns a product with multiple classifications for different importing countries, it sorts recommendations by:
 - a. The matching importing country.
 - b. Accuracy rating for the matching importing country.
 - c. Accuracy rating for non-matching importing countries.
- New translations are available. For more information, see [Translations](#).

Advanced Shipping Notice (ASN) and Buyer Consolidation

Buyer consolidation is now available in GTTE. If multiple ASNs are shipped to a local freight forwarder, the packages are usually consolidated under one bill of lading number or air waybill number, and they must be cleared together under one import entry. This process is needed only when the ASNs are received individually, meaning they must be consolidated into one import shipment in QAD GTTE. All processing must be done against the consolidated import shipment

rather than the individual transactions. If the source system already consolidates the transactions, they are processed as one transaction.

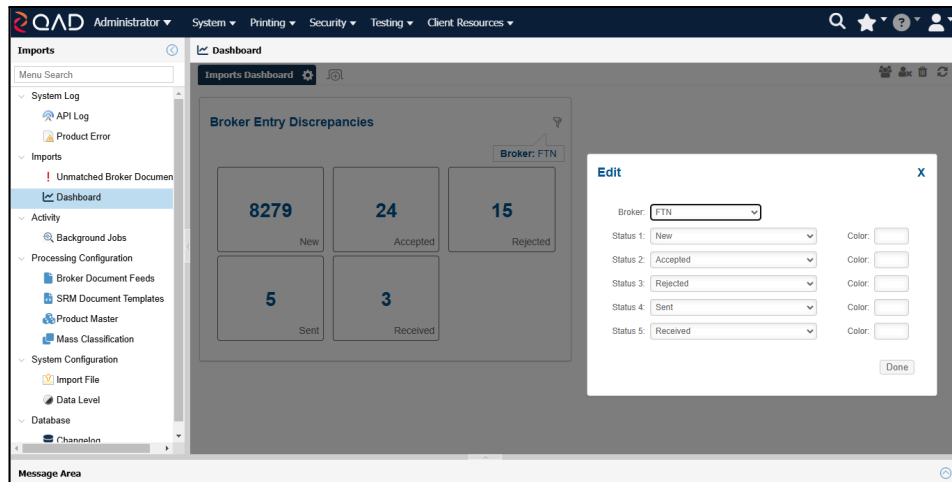
The ASN and buyer consolidation is not automatically created, because it is not possible for the system to determine how many ASNs were put together.

The alternative is to pass each ASN to a broker individually, so that the consolidation happens in their system. For this reason, the consolidation feature and the associated FTN Check and Submit task are disabled by default. They can be enabled at broker level as needed. For further details, contact your account manager for QAD Global Trade.

For information on how to manage consolidations, see [FTN Check and Submit Task Updates](#).

Imports Dashboard Updates

- The Broker Entry Discrepancies chart now accommodates up to five distinct statuses, increasing the previous limit of three statuses.
 - Two new statuses are available: Sent and Received.
- The broker dropdown menu is now configurable through the EDI_BROKER flex domain.



Reports

New reports are available in the ITC category. For more information, refer to the Reports section of the *QAD GTTE v20.6 Release Notes* (publication pending).

Translations

Import Management UI translations are now available for three languages: French, Chinese (Simplified), and Portuguese (Brazilian). However, you must already have these languages installed in QAD GTTE to avail of the translations upon installation of the feature update. If these

languages are not already installed, you must upload the translation packages for the languages in menu option XML. The translation packages are available in [IMP_FU#10]data\translation-packs\.

In the CHI and PTB translation packages, all import management screens are translated into Chinese (Simplified) and Portuguese (Brazilian).

In the FRE translation package, French translations are now available for the following screens and features:

- Login
- Home
- Menu
- Product Master
- Classification Worksheet
- Imports Configurator
- QAD Champion AI product classification

Workflow

The following updates are available for import management workflows in the Workflow Portal.

Broker Discrepancies API Enhancements

In the EDI Broker Summary API, a consumer for the broker discrepancy is now available. The consumer logic automatically validates the electronic data interchange (EDI) data. If validation fails, the API creates a broker discrepancy to review the API value. If validation is successful, the following transaction attributes are updated:

- EntryDate
- PortCode
- PortOfUnlading
- ImportingCarrier
- EntryNumber
- DeclarantName
- DeclarationDate
- ImportDate
- ForeignPortLading
- SummaryDate
- ConsigneeNumber
- ImporterNumber
- ReferenceNumber
- ReleaseDate
- CustomsBondType
- BondReferenceNumber

- MissingDocuments

The consumer logic compares the following data elements on the transaction against the EDI data and raises a discrepancy where a difference exists:

- Transaction Header
 - Country Of Origin
 - Number of Packages
 - Total Charge Invoiced
 - Country Of Export
 - Shipment Description
 - Import Type
 - Total Entered Value
 - Manufacturer ID
 - Surety Number
- Transaction Parties
 - Party Name
 - Party Address
 - Party (New or Dropped)
- Transaction Charges
 - Charge Description
 - Charge Value
 - Charge (New or Dropped)
- Transaction Items
 - Product Code
 - Product Description
 - Unit Price
 - Quantity
 - Quantity UOM
 - Country of Origin
 - Exchange Rate
 - Manufacturer ID
 - Export Country
 - Foreign Port Of Lading
 - Export Date
 - Commodity Code
 - Merchandise Processing Fee
 - Harbour Maintenance Fee
 - Duty
 - ADA Rate
 - CVD Duty
 - CVD Rate
 - Item (New, Dropped, Cancelled)

Entry Discrepancy Review Workflow Task

The new Entry Discrepancy Review workflow task lists the discrepancies that are identified by the EDI Broker Summary API message.

Data Context	Data Element	Shipment Value	Broker Value	Action	Status
Header	Origin Country	NL	DE	👍 🗑️	
Header	Total Charge Invoiced	226.1350	220.1350	👍 🗑️	REJECTED
Header	Country Of Export	IR	CN	👍 🗑️	
Header	Shipment Description	My Shipment Desc 02	My Shipment Desc 01	👍 🗑️	
Header	Import Type	01	02	👍 🗑️	
Header	Total Entered Value	144.0050	140.0050	👍 🗑️	
Header	Manufacturer ID	MANID02	MANID01	👍 🗑️	
Header	Surety Number	998	999	👍 🗑️	
CONSIGNEE	Party Name	Chain Store USA-Central	Beijing 1234 X5	👍 🗑️	
CONSIGNEE	Party Address	Address: 273 South Street, City: , State: OH, Country: US, Postal: 44303	Address: Beijing Road 124xX5, City: BEIJINGX, State: , Country: XX, Postal:	👍 🗑️	
SUPPLIER	Party Name	Company X2	Company X1x	👍 🗑️	
SUPPLIER	Party Address	Address: 7292 Fern CREEK BLVD X2, City: SANTA MONICA, State: CA, Country: US, Postal: 9505344	Address: 7899 Fern CREEK BLVD X1, City: BOSTON, State: MA, Country: US, Postal: 95079	👍 🗑️	
IMPORTER_OF_RECORD	Party Name	Company Luke very long name con X3	Company Luke very long name con A3	👍 🗑️	
IMPORTER_OF_RECORD	Party Address	Address: 7898 Fern CREEK BLVD x3, City: BERLIN, State: , Country: DE, Postal: 400120	Address: 7898 Fern CREEK BLVD A3, City: BONN, State: , Country: DE, Postal: 400140	👍 🗑️	
Customs Duties X2	Charge Description	Customs Duties X2	Customs Duties	👍 🗑️	
Customs Duties X2	Charge Value	4.0000 USD	7.00	👍 🗑️	
MERCHANDISE PROCESSING	Charge Description	MERCHANDISE PROCESSING FEE X2	Handling PROCESSING FEE	👍 🗑️	
MERCHANDISE PROCESSING	Charge Value	12.5200 USD	14.52	👍 🗑️	
Insurance Filing X2	Charge Description	Insurance Filing X2	Insurance Filing X1	👍 🗑️	
Insurance Filing X2	Charge Value	6.1500 USD	3.00	👍 🗑️	

The task contains the following buttons:

Button	Description
Show Accepted	To help you to focus on outstanding changes, all previously accepted discrepancies are hidden by default. To view these accepted changes, click Show Accepted.
Hide Accepted	Only shows discrepancies that are outstanding or marked as rejected.
Accept All	Accepts all outstanding discrepancy changes, such as changes with a blank status. In instances where a discrepancy cannot be applied due to a validation issue or another conflict, the discrepancy remains outstanding.
Reject All	Rejects all outstanding discrepancy changes.
Refresh	Refreshes the list of discrepancies within the grid.

The grid on the Entry Discrepancy Review task contains the following columns:

Column	Description
Data Context	Shows context information related to the discrepancy.
Data Element	Shows the specific data element where the discrepancy was found.
Shipment Value	Shows the current value of the data element on the transaction.
Broker Value	Shows the broker value received within the broker summary message.
Action	The Action column contains the following buttons for processing the discrepancy: <ul style="list-style-type: none"> ● Accept: Apply the discrepancy change to the transaction. ● Reject: Reject the discrepancy change. ● Manual Accept: Manually apply the suggested broker to the transaction.
Status	Shows the status of the discrepancy. <ul style="list-style-type: none"> ● A blank status indicates that the discrepancy decision is pending. ● Accepted: The discrepancy is accepted. ● Rejected: The discrepancy is rejected. ● Manual-Fix: The suggested discrepancy change was manually applied outside of the workflow task.

FTN Check and Submit Task Updates

As part of the consolidation feature, which is described in [Advanced Shipping Notice \(ASN\) and Buyer Consolidation](#), new buttons are available in the FTN Check and Submit task if the FTN functionality is enabled. To enable FTN, contact your account manager.

- If multiple ASNs are found, the Transmit button is hidden and the Create Consolidation button is shown instead.
- After you create a consolidation, the child transaction displays the Remove from Consolidation and Show Consolidation in Workflow buttons.
- The task contains a Refresh Consolidation button, which checks for updates and refreshes data from the child transactions.
- For the Send to Broker option, the Customs Invoice permission for the broker is performed at the consolidation level and any 7501 or entry data coming back is compared against the consolidation as well.

Items Task Enhancements

The following enhancements are available for the Items task:

- New purchase order fields are available in the Items task: PO Number and PO Date.

- PO Number is a lookup of open purchase orders (POs) in the system. You can search for purchase orders in the lookup by PO number, external reference, exporting country, and supplier.
- Upon selecting a PO number from the lookup, the corresponding PO date is automatically populated in the read-only PO Date field.

Workflow Transaction Search

A broker status attribute is added to the import shipment transaction header. The attribute tracks the overall status of the transaction in relation to sending, receiving, and consuming the EDI broker message. The attribute also tracks any discrepancies that are raised. The potential statuses for the attribute are:

- A blank value means the transaction is new. No EDI broker messages have been sent or received.
- SENT: The EDI broker message is sent to the broker.
- RECEIVED: The message is received with one or more discrepancies. The decision to accept or reject is outstanding.
- ACCEPTED: No discrepancies are identified, or all discrepancies are resolved.
- REJECTED: One or more discrepancies are marked as rejected. A broker status attribute is incorporated into the transaction header. This attribute monitors the comprehensive status of the transaction with regard to the transmission, reception, and processing of the EDI broker message, as well as the management of any identified discrepancies.

Export Management

Shipment License Workflow Enhancements

In the Shipment License workflow task, you can now apply multiple licenses against an export control classification number (ECCN).

Trade Compliance

Commodities

The following exports commodities are now available:

- Common High Priority List (CHPL)
- Saudi Arabian commodities

The following imports commodities are now available:

- Canadian commodities
- United Arab Emirates commodities

Resolved Issues

The following issues are resolved in this feature update:

Product Details

- An issue with FDA All, where the Creation Date field was corrupted and displayed as NaN, is resolved.

Trade Compliance

- An issue where the license prompt for the Compliance Results screen was not showing license exceptions is resolved. The Shipment Licenses workflow task is also updated as a result of this fix.
- An issue where the keyword check for texts was not working is resolved.
- An issue where the compliance history header run date was not consistent with the results detail screen run date is resolved.
- Extended characters in Reference fields.