

TRA/X Release Notes

V6.0 #A04

Document Control

Issue Control

Issue	Date	Changes Made
1.0	23 Sept 04	#A04 Patch Release information

Cross Reference

Contents

Document Control.....	3
Issue Control	3
Cross Reference	3
Application – Enhancements	7
Searching – List & Selection Panels, Workflow Panel and Workflow Available	
Options.....	7
Email – SMTP Support.....	13
Compliance	13
Workflow	14
Document Production	15
Rates Upload (via Excel)	15
Rating Engine.....	16
Routing Guide / Rate Shopping revisions.....	16
Transaction - Manual Charge Create	16
Packing.....	16
Route, Booking and Container screen	16
Transaction Vessels Screen.....	16
Customs Classification Maintenance (CM)	16
Function Group Maintenance (FN).....	16
Maintenance Panel - Editor Fields	17
Automated Export System (AES).....	17
Application - Fixes.....	18
General	18
Compliance	18
Workflow	19
Technical.....	20
General.....	20
Email – SMTP Support.....	20
Workflow	20
Document Production	20
Highway Adapters	21
Suggestions for Improved Documentation	22

Application – Enhancements

Searching – List & Selection Panels, Workflow Panel and Workflow Available Options

The searching capabilities have changed dramatically. Previously character searches in TRA/X returned all entries that contained the search word entered i.e. implied wildcards. While this may be desirable for some implementations it had drawbacks;

- Performance – The queries Would not use indexes and therefore implementations that had large number of records had poor performance
- It was not possible to control how the search worked i.e. show all entries beginning with or all entries ending in a particular value

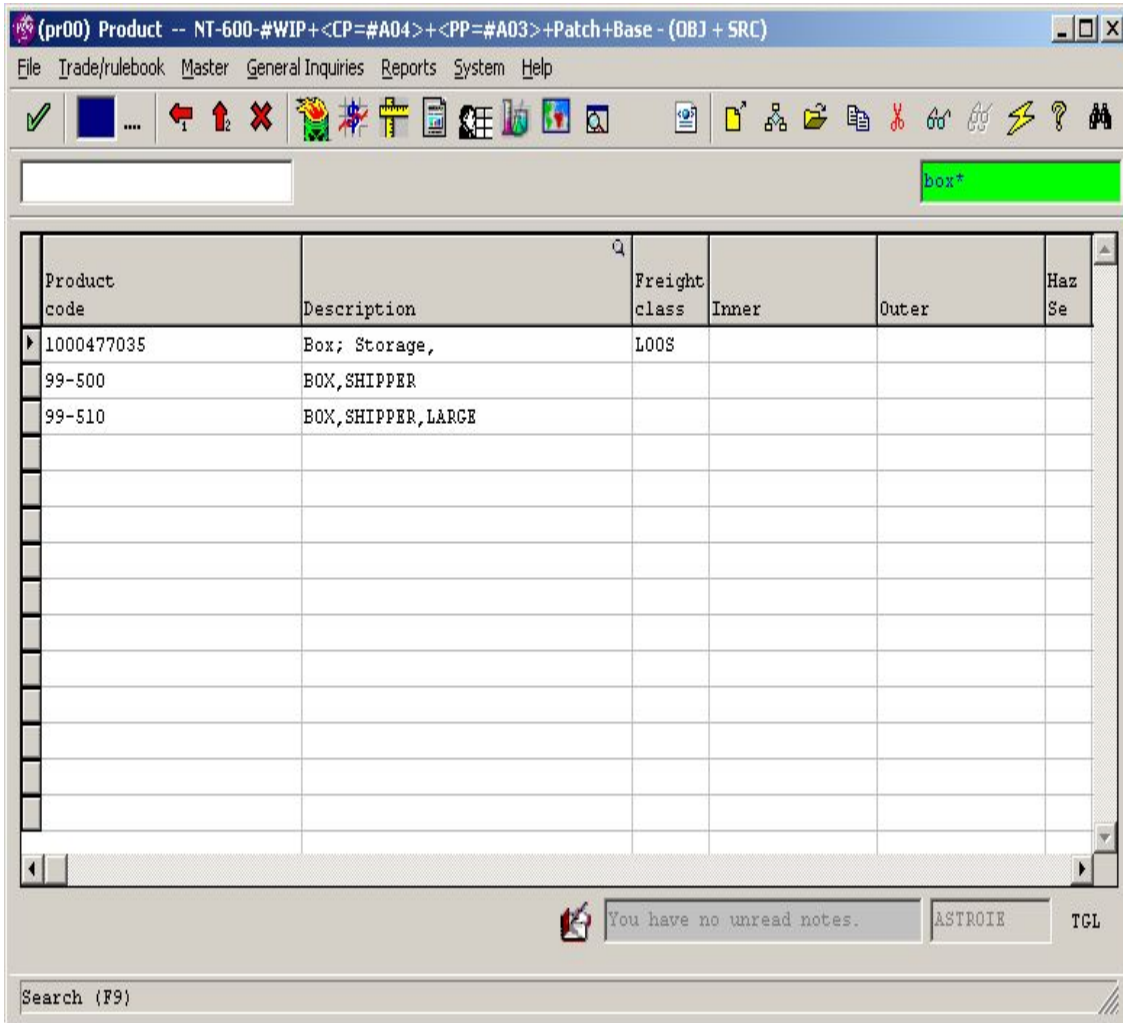
This has been changed and it is now necessary to specify wildcards for searching. The following system values are related to searching.

Category	Key	Default	Information
SYSTEM	LIST PANEL:SEARCH	EQUAL	EQUAL - Indicates that the query should return entries that match search string entered, if wildcards used these will be taken into consideration BEGINS - Indicates that the search should return entries that begin with the search string entered.
SYSTEM	LIST PANEL:DEBUG QUERY	NO	YES - Display the query being used in a dialog box on the screen NO - Do not display the query being used in a dialog box on the screen

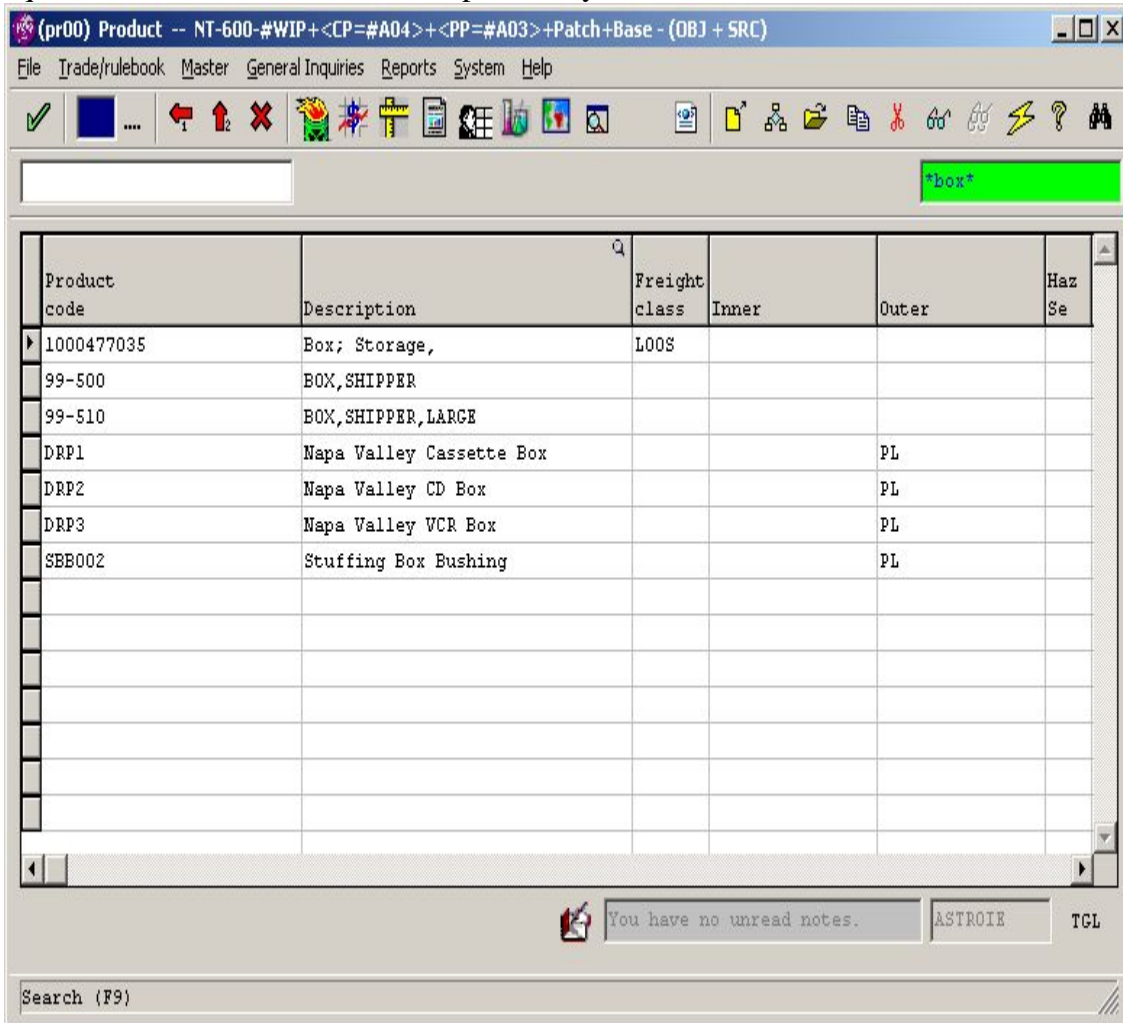
The following are some examples to illustrate the behavior of the search for the two possible settings of 'LIST PANEL:SEARCH'. The examples use the Product List Panel and the following is a list of product descriptions;

Box; Storage,
 BOX,SHIPPER
 BOX,SHIPPER,LARGE
 Napa Valley Cassette Box
 Napa Valley CD Box
 Napa Valley VCR Box
 Stuffing Box Brushing

Example 2: Search for the products starting with the word 'box'.
 The * at the end of the search string indicates that it should display all entries that begin with box and the subsequent characters are irrelevant.



Example 5: Search for the products with the word 'box' anywhere in description. This is equivalent of how searches worked previously.



LIST PANEL: SEARCH - BEGINS

The only difference is for example 1 and 2 above; searching for 'box' or 'box*' will produce the same result, products with description starting with the word 'box'.

The Workflow program (including AVAILABLE OPTIONS screen) has been updated to be compatible with the List Panel and Selection List search.

Email – SMTP Support

TRA/X supports sending emails using the Simple Mail Transfer Protocol. The following System Values are used in the configuration

Category	Key	Default	Value
EMAIL	AUTOMATIC EMAIL METHOD		SMTP
EMAIL	E-MAIL PROFILE NAME		Email address of person sending mail e.g. document_suggestions@precisionsoftware.com
EMAIL	SMTP SERVER		SERVER IP[:PORT-NUMBER) e.g. PSLMAIL:6000
EMAIL	SMTP EMAIL BODY TYPE		Text - email with no attachment Multipart/Related - email with an attachment
EMAIL	SMTP EMAIL CC		This is optional but if included should be a list of email addresses to be copied on any mails issued
EMAIL	SMTP EMAIL MIME HEADER		MIME header properties e.g. to send a mail in HTML format type=text/html;charset=usascii
EMAIL	SMTP LOG DIR	session:temp-dir	The folder that will contain log files created during mailing process.
EMAIL	SMTP LOG FILE	socketemail.log	The name of the log file created within the log folder.
EMAIL	SMTP LOG LEVEL		3 - Minimal 1 - Verbose

This is the default email method for TRA/X, set in System Parameters, from this release forward.

This option is available for Documents, Compliance Notifications and SPS Notifications.

Compliance

- Notification Message Header Format – The compliance notification contained the following fields at the start of the message
 - o Consignor
 - o Reference
 - o Despatch Number
 - o Date
 - o User

This list has been expanded to include the TRA/X client and the fields and their respective labels that should appear are controlled via a system value. If the system value does not exist it will include all fields.

Category	Key	Default	Value
COMPLIANCE	MESSAGE-HDR-FIELDS		FIELD NAME, LABEL e.g. CLIENT, Branch Plant: ,SHCONO,Consignor: ,SHSHIP ,Reference: ,DATE,Date: ,USER,User:

- Partner Compliance Screen – Disabled New, Delete and Copy Buttons and made compliance options available as buttons on the list panel

Workflow

- Configuration – When the ‘Info’ button is used the parameters are automatically copied to the Clipboard
- Configuration – The field that indicates whether a task is a break task is displayed on the list panel when maintaining tasks for a workflow.
- Workflow panel – You can now specify reference numbers for different tabs and it will remember the number when returned to the tab. Previously the same reference number was carried from tab to tab.
- Workflow Panel – It is possible to specify the date field from the transaction that should be compared to the Despatch date entered on the filter screen.

Category	Key	Default	Value
WORKFLOW	FILTER DESPATCH DATE - TRANSACTION TYPE	DDTE	Any date field from the XMSHDR0 or XMGRUP0 table depending on whether it is a shipment or load level transaction. Shipment Level DDTE Despatch date EDTE ETA Date ADTE Actual arrival date LDTE Loading date XDTE EXTRA date BEDT Bill of exchange date IDTE Invoice date ODTE Order date BDTE B/L Date KDTE Bank Date SDTE Extra Date PDTE Depart Date CDTE Close date TDTE Transaction date DWDF Req. delivery start date DWDT Req. delivery end date COBD Certified on board date EXPR Expiry Date Receiving IT date ITDT ELDT End loading date GDSDEPDT Goods Departure Date Load Level TDTE Transaction date DDTE Despatch date EDTE ETA Date ADTE Actual arrival date

			LDTE Loading date
			XDTE EXTRA date
			BEDT Bill of exchange date
			IDTE Invoice date
			ODTE Order date
			BDTE B/L Date
			KDTE Bank Date
			SDTE Extra Date
			CDTE Close date
			PDTE Depart Date
			COBD Certified on board date
			ITDT IT Date

- New load level transaction type of 'V' has been added

Document Production

- Number of copies – If locales are used and the number of copies is not entered it will be retrieved from the document on the shipment.
- Document distribution list validates email addresses contain a @ symbol and that fax numbers have been entered for any documents to be sent by fax.

Rates Upload (via Excel)

- It is possible for zones to be specified as a country/state combination
- The Cost Type can be specified in the COSTTYPE field in the TABLESECTION. If it is not specified it will continue to default to QFRT.
- It is possible to specify at a detail level whether Volumetric conversion apply. This can be done using the fields VOLUMETRIC and VOLUMETRICDIVIDE. VOLUMETRIC is the rate and VOLUMETRICDIVIDE determines whether it should be divided or multiplied, Y means divide and N means multiply. This applies to Rate Per (02) and Tier User Defined Tables (04) calculation methods.
- It is possible to specify an axis is based on Volume. The Volume Unit of Measure should be specified in the VOLUMEUOM field.
- The axis names are generated by the system and are limited to two characters. The upload program has been modified to increase the number of axis possible.
- It is possible to indicate that charges should be summarized i.e. if multiple charges of the same cost type are calculated that there are summarized into a single charge. This is controlled by the SUMMARISED field in the TABLESECTION. The possible values are Yes and No and it will set the Summarise flag on the Charge Table created.
- There are two new fields USENEXTTIER and USEHEADERQTY and these set the 'Check Next Tier' and 'User Header Quantity' on the charge detail record. The possible values are Yes and No and they are specified in the TABLESECTION. The USENEXTTIER determines whether the next tier should be checked for a cheaper rate (starting weight of the next tier multiplied by the rate). The USEHEADERQTY determines whether the overall weight of the shipment should be use to determine weight break to be used.

Refer to Reference Guide Topic 39 for further information.

Rating Engine

When rating is initiated from the Rating screen for LTL-related routes the system will not set the transaction to rated if a zero value charge is calculated.

Routing Guide / Rate Shopping revisions

For full information on this, see TRA/X Reference Guide – Topic 40.

Transaction - Manual Charge Create

The currency code defaulting onto manually create charges on a transaction can be controlled via system values.

Category	Key	Default	Value
COST+REV	DEFAULT CREATE CHARGE CURRENCY		<p>COST+REV:DEFAULT – set the currency code based on the setting in system value 'DEFAULT CURRENCY' within 'COST+REV' category</p> <p>SYSTEM:DEFAULT – set the currency code based on the setting in system value 'DEFAULT CURRENCY' within the 'SYSTEM' category</p> <p>SHIPMENT – set the currency equal to the currency on the transaction</p>

Packing

- Extended Packing – There is now a multi-select option for child packs.
- Save Button – the button usage on the packing screen has been changed so that it is consistent with other TRA/X screens. A new button has been introduced to save changes during packing. The OK button can now be used to inform the system packing has been completed. This also solves the issue where some implementations have a question following packing to ask whether packing has been completed so that the packing task gets updated correctly, this is no longer needed.

Route, Booking and Container screen

- It is possible to configure mandatory and protected fields in the browsers on this screen via option configuration (fastpath GO).
- The nationality lookup was corrected.

Transaction Vessels Screen

The country and carrier fields are defaulted onto the vessel when an asset is added and these fields are blank.

Customs Classification Maintenance (CM)

The Effective From date is available on maintenance screen

Function Group Maintenance (FN)

The description of options attached to a function group is displayed on the list panel.

Maintenance Panel - Editor Fields

Keeps the cursor offset the same on each line in the editor widget when using the arrow keys to tab from field to field.

Automated Export System (AES)

Changes to the AES Trade Interface Requirements (AESTIT) message specification.

Application - Fixes

General

- 200335206 - The Fast-path field can now be used when in the CK option.
- 200434960 - Quick Shipment Create (xtshpcrt.w) – The next partner code was not being retrieved correctly for partners created dynamically from this option.
- 200433421 - Rate Calculation - Issue corrected with standard charge calculation program where the minimum per zone was only being used if the next tier was set on.
- Product Maintenance – the screen layout has been changed back to v5.1 layout.
- 200331459 – Rate Shopping Screen – when a user presses escape it goes back one screen rather than to the main menu.
- 200434201 – Base Product Maintenance – Rates by date – The end date entered is now stored correctly and the label on the column on the list panel has the correct label.
- 200434756 – When using MAPI email method there can now be up to twenty email addresses on the To line.
- 200434781 – Transaction Archiving – this was sometimes crashing with a Progress error message “no tt-order-results record is available”.
- 200434809 – The SAD document program (xs_sd002.p) was not outputting the delivery terms text from the transaction, it always took the description from master table. It will now take it from the transaction if it has been populated.
- 200434801 – The Rate Shopping button on SH screen is now calling the correct program (same one that is called from sub options).
- 200435190 – Translations – The translation screen did not allow the changing of labels for objects in child frames.
- 200435158 – The option to assign partner roles to multiple partners was assigning the name from the first partner onto all partner roles created. This name is subsequently displayed when carrying out lookups on partners.
- 200434612 – Carrier Label Rating Screen – sporadic Progress error, number 2910, was being displayed.
- 200335363 - Rule Processing – the following fields were not populated, Sales Representative 2, 3 and 4 (xhsrep2, shsrep3, shsrep4).
- 200332386 – It was possible to get the following message when logging onto TRA/X, “Month of a date must be from 1 to 12”. This message was displayed when users with different date formats logged onto an environment where there was a user limit on the modules.

Compliance

- 200434289 - DPL Checking – The C/O Name hits were displayed only if the name it was associated with also caused a fail.
- 200435038 - DPL Results Screen – The bottom of the results was sometimes cut off for non Progress database platforms.
- 200435175 – Oracle - Compliance Results – The following message was appearing sporadically, “*ORACLE error - 1461 see "ORACLE Error Messages and Codes*”

Manual".(1252)". The results per category are truncated to 4000 characters. However the truncation did not always work correctly on Oracle platforms when the database Character Set was UTF8. This has been fixed.

200434155 - The call to compliance engine from within Carrier Label Screen passes the correct parameters.

200435038 – AS/400 - Progress Errors 142 and 9891 were appearing when compliance was run. This has been corrected.

Workflow

200434040 - No longer get "mismatched parameters" when run a task from the Task List screen in Workflow.

200434040 - Subflow tasks no longer hang.

200335287 - The required status of tasks was not been checked correctly in Workflow engine. e.g. if a task was configured to check the required status was less than a particular status it would always return it was regardless of values.

200333606 – If the spacebar key was hit while on the Workflow screen the task list would change to display the tasks associated with the first transaction.

200435045 – Transaction Document Task – if there was only one document attached to the transaction and it was highlighted pressing the cancel button (red X) would cause TRA/X to crash.

Technical

General

200434201 – If column-labels for list panels were overwritten in Program Builder the new label did not appear.

200434355 - The option to create the Upload program for macros with embedded commands (SPS labels) is available on the MA screen. It allows for multiple macros to be selected and allows the output folder and file to be specified.

200434875 – The shipment inquiry has been changed to use dynamic queries.

200333464 - Procedures to support FTP batch commands. See KB

<http://www.precisionsoftware.com/kbmt.asp?ID=200410073&uidPrg=KnowledgeBase>

200434656 – A new procedure has been included in sysval.p for updating the local copy of a system value, update_write_tt. The system value is not changed in the database.

200435643 – UoM conversions are only executed when the From and To units are different. This has a performance impact under in some scenarios.

PDF documents can be generating without printing or previewing a document (see xtpdfdo.p).

200434865 – Utilities available for base64 encoding and decoding.

Email – SMTP Support

200433996/2004343399 - Email logic encapsulated (xtemail.p) so that email capability can be easily incorporated into any program. See

<http://www.precisionsoftware.com/kbmt.asp?ID=200410085&uidPrg=KnowledgeBase>

Workflow

200435079 - The include file that cycles through tasks on a transaction had a problem with Transaction scope. This has been addressed in the include file and if any problems are found the relevant program should be recompiled.

200435014 - E-Code Segment – a new program was created, xtwfcode.p, and is run persistently from Workflow program. Where possible any new code for Workflow engine should be put into this program to avoid e-code segment problems.

200434885 - Dynamic Tasks – can now set the status to PASS, FAIL or NOTDONE

Document Production

200433786 - Publish File – The template publishes an event that takes as parameters, file type and file name. These Events can be Subscribed to and actions run.

e.g. There are Subscribers in the SPS Black Box Engine that take the output file and embed it in a message for return to the calling system

200433673 - Lines on PDF Documents - Allow PDF lines to be generated as part of document data. This can be used to support barcodes.

Highway Adapters

200433962 - Listener – This can pass messages as MEMPTR's. The following parameter hint should be used ID:M:UID:U1.

200335391 - HTTP Listener – Large reply messages can be sent to highway.
Requires Highway v1.6 or later.

Suggestions for Improved Documentation

Please report any suggestions that you feel would improve Precisions documentation and return to the following address:

Precision Software Ltd.
Attn.: Documentation Manager
Castlewood House,
Castlewood Avenue,
Rathmines, Dublin 6,
IRELAND
document_suggestions@precisionsoftware.com

Your Name _____
Company Name _____
Phone Number _____ () _____

Product _____ **TRA/X** _____
Manual (Install or User) _____ **TOPIC number** _____

Chapter _____ Page _____
Suggestion

Chapter _____ Page _____
Suggestion

Chapter _____ Page _____
Suggestion

Chapter _____ Page _____
Suggestion

Please feel free to photocopy if additional pages are needed.