



PRECISION Web UI Release Notes (4.2)

Date:

October, 29, 2010

Contents

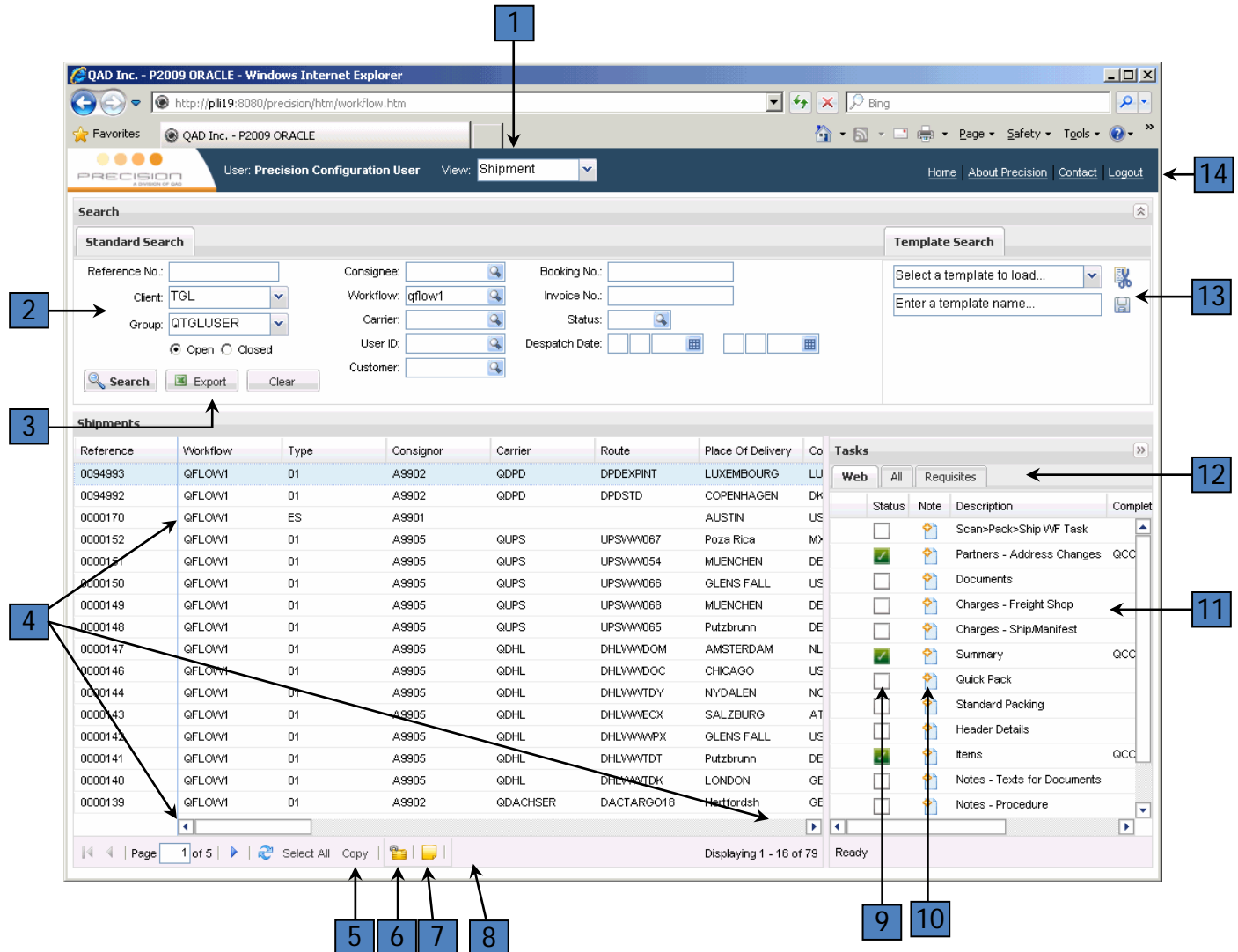
Web UI	3
Workflow	3
End of Day Manifest	7
Desktop Shipping	8
Compliance	9
Usability	9
PEM	11
Routing Guide	11
Scan Pack Ship	12
Technical	14
Fixes since 4.1.0.	15
Highway	19
Installer	22
Fixes	22

Web UI

Web UI version is now 4.2.0.

Workflow

1) An enhanced workflow portal page is now available. The key portal features are listed below.



- 1 Allows one to specify what type of transactions one wants to work with or “view”. The list is user specific and can include values such as “Order”, “PO”, “Shipment”, and “Load”. Tasks are currently only available for Shipments.
- 2 The “Standard Search” allows one refine the type of transactions that are shown. For example a user can specify shipment details, select “Search” button and get a list of matching shipments returned in the below grid. Only shipments a user is permitted to work with are shown.

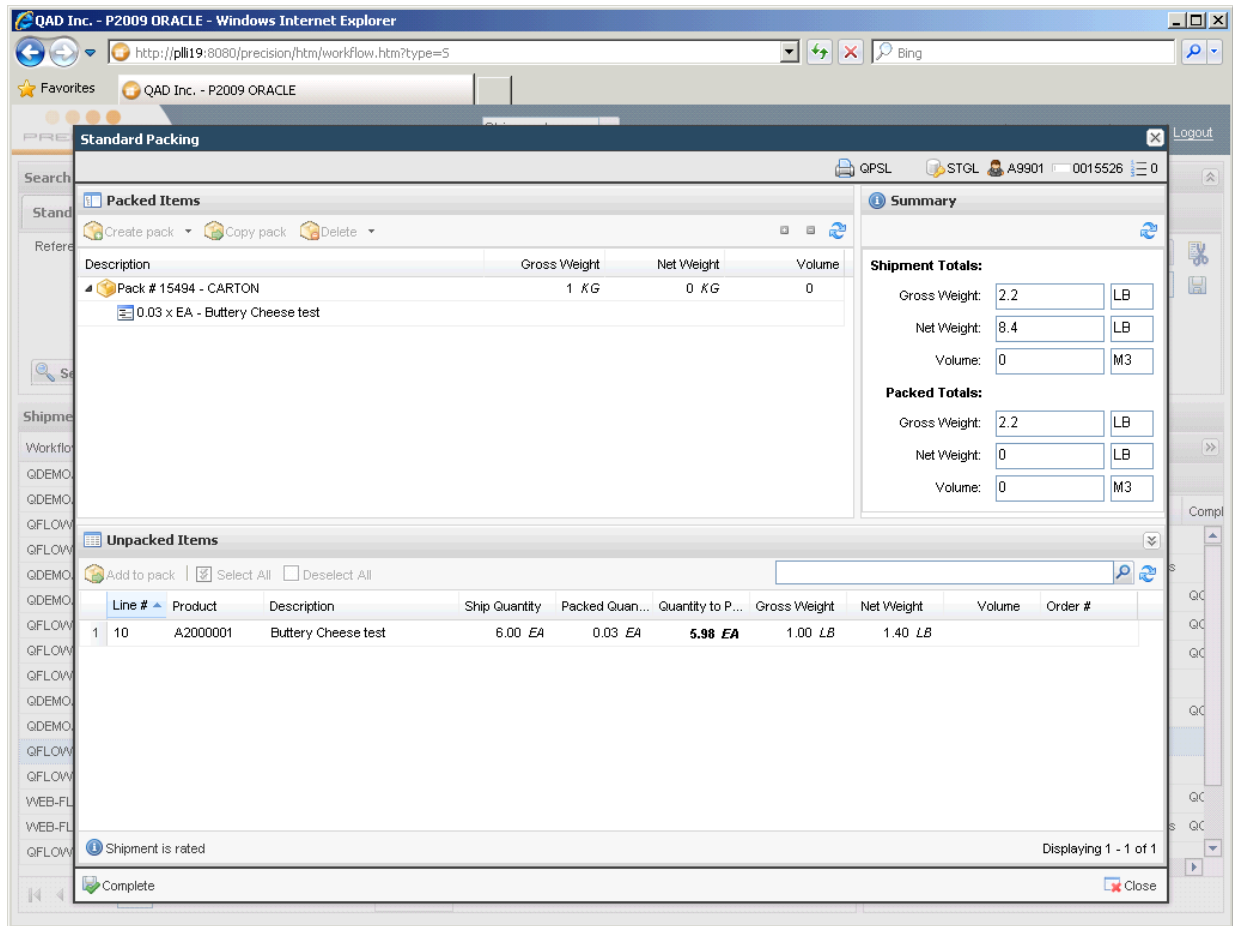
3	Selecting the “Export” button transfers all the grid data into an Excel document.
4	The grid lists all shipments that match the search criteria.
5	“Copy” provides a quick means of copying a selected record in the grid into clipboard for pasting purposes.
6	Typically when a task is run against a shipment the shipment is locked so that other users cannot conflict with changes being made during an update. In certain cases it may be that a shipment remains locked after a task has finished. In such cases the shipment can be unlocked using this button. It should be noted that during normal conditions this button is not needed. A task will automatically unlock a shipment when completed.
7	The “New” button allows one create a new shipment. See screen shot below.
8	A toolbar allows one to add custom buttons that a user can call.
9	When a shipment is selected the tasks that can be performed against it are shown on the right. The status of these tasks can be not yet completed, completed successfully and completed unsuccessfully. Icons next to the task description indicate the status of a task.
10	The “New Note” button allows one to create a note against a task. If a note exists for a task then it can be viewed by clicking the note button. Alternatively the note can be made appear automatically when the task is run.
11	The bottom right panel shows a list of tasks that can be run against the selected shipment. The tasks shown can vary depending on the shipment selected. If a task is complete the user who completed the task along with the date and time it was completed is shown. The ability to execute tasks can be conditioned on whether other tasks have or have not already been executed successfully (pre/post requisite conditioning). Tasks can be flagged as being available to the Web UI, Windows UI or Both. Only Web UI can be executed, however the status of Windows UI only can be viewed from the portal and pre/post requisite conditioning can also be built around these tasks. When a task is run it is hosted in a popup within the Workflow portal page. Some of the available tasks are shown below.
12	Tasks can be viewed by category. Tasks that can be run in the Web UI are listed under the web tab. Other tasks that can be run in the Windows UI are shown under “All”. Other categories can be defined for a user and tasks associated with these categories. This is useful in cases where there are a lot of tasks on a workflow.
13	The search criteria specified on the search panel can be saved as a template. This allows the user to save common search criteria and recall this information without the need to re-type data.
14	A number of top links can be included on the page. These top links typically bring the user out of workflow but can also be configure to open a new window.

- 2) The same Workflow associated with a shipment in the Windows UI is used to determine tasks shown in the Web UI. During setup of the workflow tasks a tasks can be flagged as Window, Web or Both (XTWTKSO.WTAVAL). Setup of the workflow tasks need to be done using the Windows UI “WF” option.
- 3) Tasks can have a complete state. A green tick indicates a task has been completed successfully, a red x indicates completed unsuccessfully while a white box indicates the task has not been completed.

The task is stamped with the user who completes the task along with the date and time completed.

A task can be categorized (XTWTKS0.WTCATS). These categories map to a tabs which can be associated with a user using the system value "WORKLOAD" "TASK CATEGORIES - S".

- 4) A transaction (shipment) is flagged as "in use" when a task is run against it. This prevents multiple users from modifying the shipment at the same time.
Information is provided on who is currently working with the shipment and for how long.
The in use lock is a soft lock and works the same way as the Windows UI does.
- 5) Tasks can be configured to only be allowed run if other tasks have already been completed (pre-requisites) or only if other tasks have not been run (post-requisites).
This works in a similar way to the way the Windows UI works. Tasks that are flagged as Windows UI only tasks can still be used by the Web UI for pre/post requisite purposes.
- 6) Engine
 - a) Pre/Post task viewer
 - b) Run Windows UI checks
- 7) Tasks
 - a) Full Packing –
 - Pack an existing transaction (shipment, order etc), as a workflow task;
 - Only one user will be allowed to pack a transaction at a time;
 - Read-only mode when transaction was closed, rated, submitted to customs, created dispatches etc.
 - Create a pack (specify pack type, pack dimensions / UOM, pack weight);
 - ✓ Generate pack numbers;
 - ✓ Similar - ability to duplicate lines;
 - Add items to pack.
 - ✓ Pack by items (shipping quantity, numbers of inners / outers);
 - Transfer items between packs;
 - Remove item(s) from pack;
 - Delete pack / all packs (unpack);
 - Extended packing:
 - ✓ Work the same way as normal packing, no additional screen required;
 - Show running totals for weight, volume for pack and shipment;
 - Allow to filter available lines to pack;
 - View contents of all packs;
 - Drag-and-drop enabled;
 - Allow for standard ZP permissions.



- a) Items
- b) Procedure Notes
- c) Updated Manifest/Document tasks
 - On the Manifest Screen a dispatch date can be entered. This is defaulted by the shipment initially, and it must be in the future.
- d) Run Windows UI background tasks.
- e) Run standard process shipment actions - PRINT, RULES, ROUTE-ASSIGN, CLOSE
- f) Document task updated -
 - Can now view document image without logging in and use a link in the form
 /precision/htm/document.htm?action=showImageFromUrl&ids=SQCM;A9901;0001211;i:0
 &documentImageId=IMG000000341&databaseAlias=p2009orc&client=QCM&username=q
 config
 Where ids: is <Shipment client>;<Consignor>;<Reference>;i:<despatch number>
 Document Image Id is the ID of the image.
 And the rest are your database alias, client and username.
- d) Basic Packing task updated -
 - Packing task can now be configured to show pack type by setting system value
 "WORKFLOW" "BASIC PACKING - PACK TYPE VIEW" to "SHOW".

Quick Pack

Number of Packages:

Package 1

Weight: [Get Weight](#)

Dimensions: [Get Weight](#)

Pack Type:

Package 2

Weight: [Get Weight](#)

Dimensions: [Get Weight](#)

Pack Type:

End of Day Manifest

- 1) Updated look and feel.
- 2) Ability to view shipments on a batch.

QAD Inc. - P2009 ORACLE - Windows Internet Explorer

http://pl119:8080/precision/htm/eod-manifest.htm

User: Precision Configuration User

Home About Precision Contact Logout

You are here: [Home](#) - **EOD Manifest**

EOD Manifest

Packing Location:

Carrier:

Locale:

Batches

Batch Pickup Number [Show Shipments](#)

Batch	Date	Time	Int	Pickup Number	Book Number	Page	Sent	Code	PDL Description	World Ea
56	03-Nov-2010	5.4	✓	0007711104	0007711	10				
54	27-Oct-2010	9.43	✓	0007711093	0007711	09	✓	000000	Warning: Faking ...	

Page 1 of 1 | | Displaying 1 - 2 of 2

Shipments


© 2010 Precision Software, a division of QAD Inc.

Desktop Shipping

- 1) A “Notify” address has been added to step 1. You can save addresses which will be saved with the role 09 of notify. You can also prompt on addresses which will also return roles of 09.

[Notify Consignee](#)


New Address


To:  [Show Address Details](#)


Name:


Contact:

Address:

City: 

State: 

Postal Code: 


Country: 

Telephone:


Email:

- 2) A payment method can be configured on Step 1 of Desktop Shipping. This would be used in cases where the Payment step is not configured in the template. The drop down allows prepaid, third party and collect.

Payment:


Freight Payment Method: 


Third Party or Collect Account Number:


Name: 


Contact:

Address:

City: 

State: 

Postal Code: 

Country: 

Telephone:

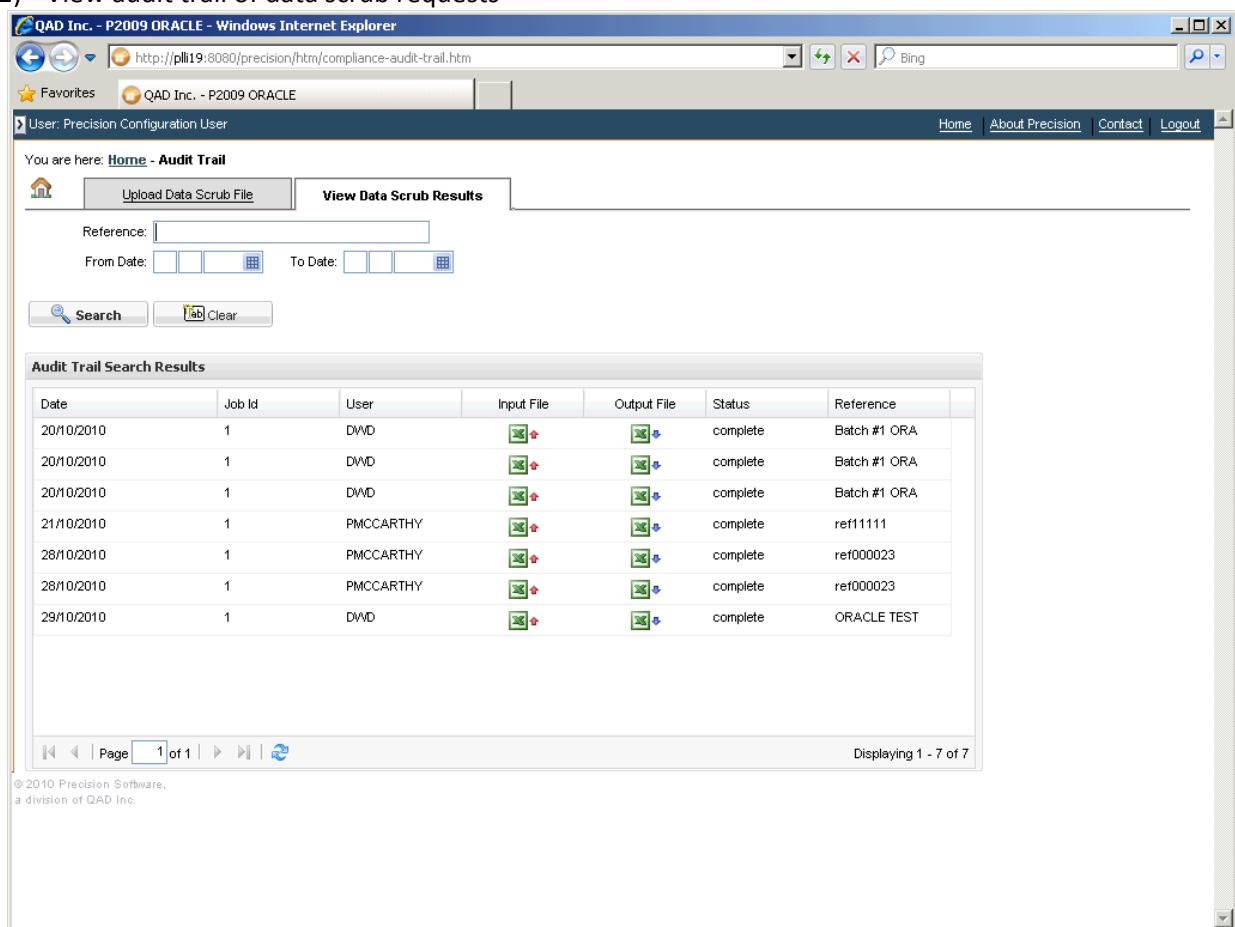
Email:

- 3) The payment step can now be setup to work with mailing lists. Accessorial will not be available to update. Payment methods can be configured to show, once they’re allowed for the chosen services from the previous step.

- 4) Some new fields that can be configured on step 1 include delivery terms (list based on System Value) temporary shipment, end use explanation.
- 5) Can default the job number on step 1.
- 6) Mandatory fields easier to recognise – in blue.
- 7) Can default freight payment methods and default duty pay methods on payment step.
- 8) Help can be configured into each step in Desktop Shipping using Templates. This allows you to point to a URL where the help file is contained. No such help file is provided by Web UI currently.

Compliance

- 1) Submit Data Scrub requests
- 2) View audit trail of data scrub requests



The screenshot shows a web browser window titled "QAD Inc. - P2009 ORACLE - Windows Internet Explorer". The address bar shows the URL "http://plli19:8080/precision/htm/compliance-audit-trail.htm". The page content includes a navigation menu with "Home", "About Precision", "Contact", and "Logout". Below the menu, there are tabs for "Upload Data Scrub File" and "View Data Scrub Results". The "View Data Scrub Results" tab is active, showing a search form with a "Reference" field, "From Date" and "To Date" date pickers, and "Search" and "Clear" buttons. Below the search form is a table titled "Audit Trail Search Results" with the following data:

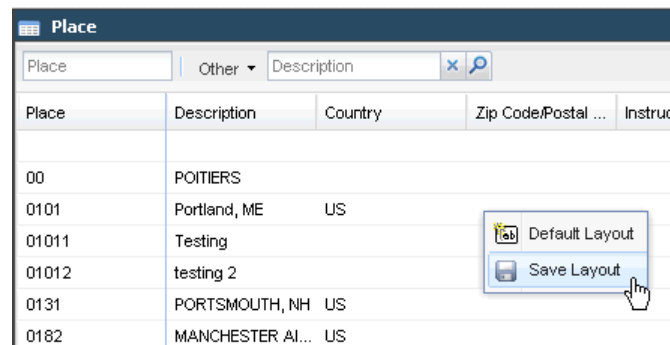
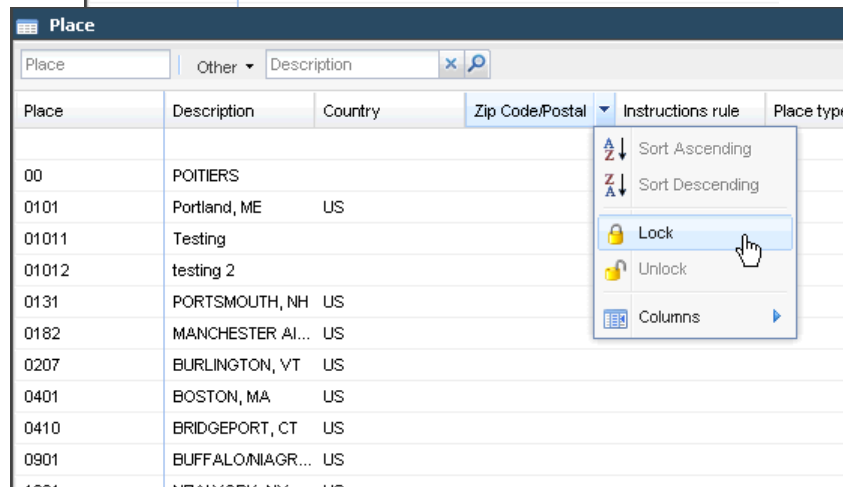
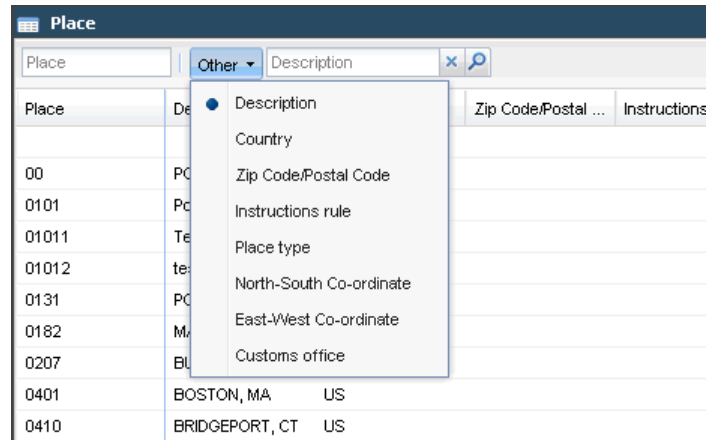
Date	Job Id	User	Input File	Output File	Status	Reference
20/10/2010	1	DWD			complete	Batch #1 ORA
20/10/2010	1	DWD			complete	Batch #1 ORA
20/10/2010	1	DWD			complete	Batch #1 ORA
21/10/2010	1	PMCCARTHY			complete	ref11111
28/10/2010	1	PMCCARTHY			complete	ref000023
28/10/2010	1	PMCCARTHY			complete	ref000023
29/10/2010	1	DWD			complete	ORACLE TEST

At the bottom of the table, there is a pagination control showing "Page 1 of 1" and "Displaying 1 - 7 of 7".

Usability

- 1) Selection Lists
 - a) Updated look and feel
 - b) Extend search capabilities
- 2) Grid enhancements -
 - a) Hide columns.
 - b) Rearrange columns.

- c) Resize.
- d) Lock columns.
- e) Key relation attributes (columns) are locked by default in selection lists.
- f) Not tied to a particular machine.
- g) Ability to default or reset user customizations.



- 3) Performance -
 - a) More compression (and more types compressed) equals faster load times, less waiting.
 - b) More caching equals less web requests and less time spent waiting for pages to load/render.
 - c) Better use of data caching.
- 4) Running options – gets URL from database

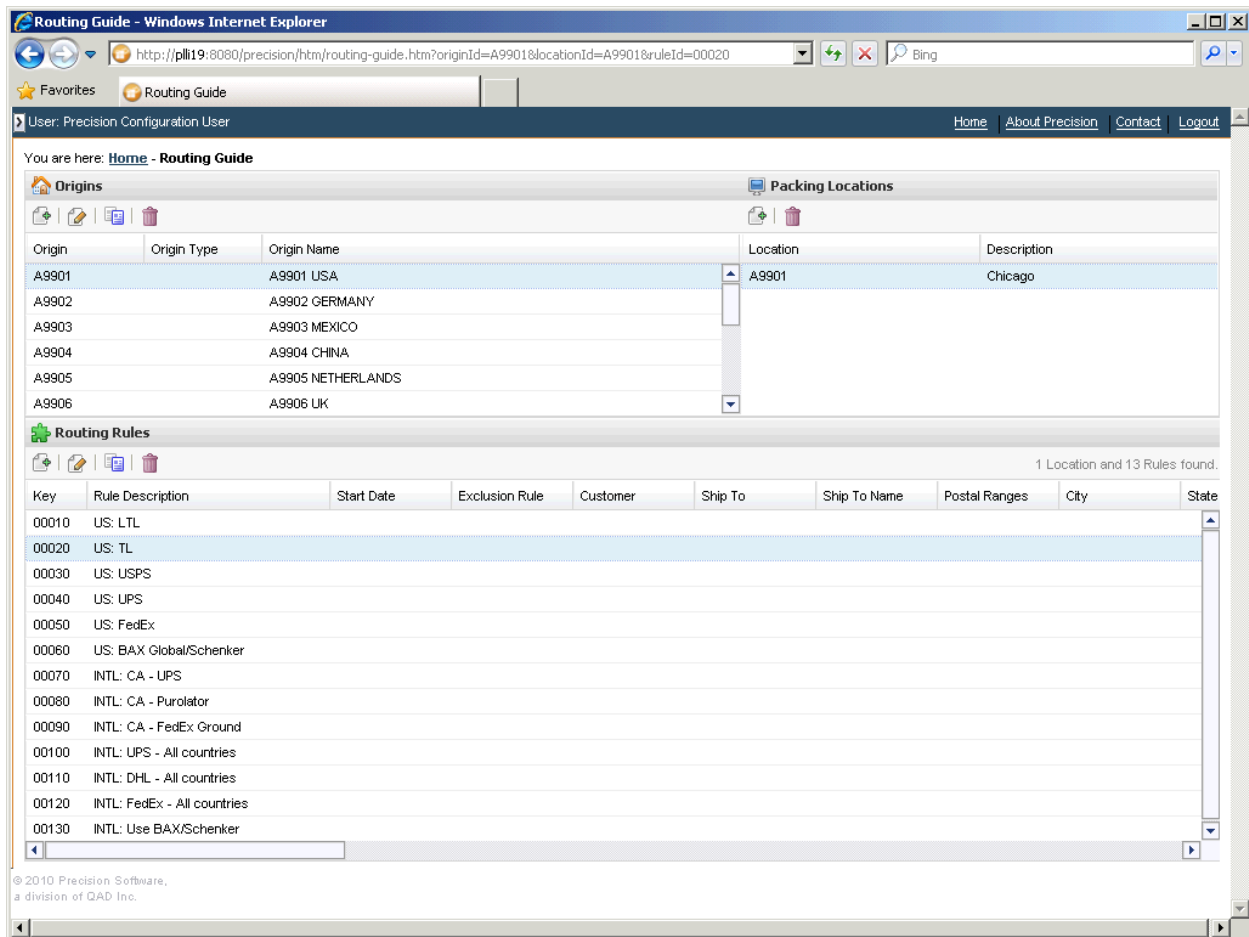
- 5) Modified the P2009 skin.
- 6) The Main page now supports external links and those links can have session substitutions. System value must be in the format http~// or https~// due to the token ":" already being used to parse the string.
External links can use the substitute tokens - <CLIENT>, <DATABASE>, <USERID>, <PACKINGLOCATION> and <LANGUAGE>

PEM

- 1) CSV Updates
- 2) EDIFACT IFTSTA version D96A
International Multimodal Status Report Message
- 3) ANSI X12 214 version 4010 -
Transportation Carrier Shipment Status Message
- 4) Auto Close Shipping plans. One can configure, per shipping plan type, a "close shipping plan tolerance" for the alert type "No Carrier Activity". The shipping plans with no carrier activity for a time longer than "close shipping plan tolerance" will get auto-closed. This functionality is useful for Return Shipment Type where the No carrier Activity is expected to happen.
- 5) The existing PEM functionality is based on the fact that a shipping plan is attached to a shipment when the EOD is fired in Precision. WEB UI 4.2 has a new functionality added, the possibility to have a Shipping plan attached to a shipment on "the fly", when the first Carrier Message for that shipment is processed in PEM.
- 6) PEM integrated carriers issues now a (new in 4.1) Notification alert when a shipping plan is not found but the shipment containing the tracking number exists in Precision. The Carrier message is put in an Auto retry queue and the PEM engine tries to re-process th message for a specified number of times.
- 7) UPS messages seems to have in X12 240/5010 message information which is not 100 % compliant with the X12 240/5010 standard.
i.e the 240/5010 standard defined for some element a set of possible values - enumeration list.
- 8) The PEM engine was validating that information and rejected the messages not compliant with the X12 240/5010 standard . A change has been applied to the UPS X12 240/5010 to not validate anymore the content of those fields. Whatever is passing is assumed as correct .
- 9) The PEM Integration UPS Turkey seems to have an occasionally issue when no further carrier messages are processed. There we added a couple of messages in the PEM application log which should lead to the cause of issue.
- 10) WEB UI 4.1.x introduced a bug which resulted in loosing of some carrier messages.
The issue was related with the way the Time Zone is determined for the carrier messages.
The issues should be fixed in WEB UI 4.2
- 11) There was an issue occurring on the Day Light Saving time switch which caused some messages to remain in PEM process - UPS Turkey Integration. The issue is fixed in WEB UI 4.2

Routing Guide

- 1) Maintain routing guide information similar to Windows UI.



Origins

Origin	Origin Type	Origin Name
A9901		A9901 USA
A9902		A9902 GERMANY
A9903		A9903 MEXICO
A9904		A9904 CHINA
A9905		A9905 NETHERLANDS
A9906		A9906 UK

Packing Locations

Location	Description
A9901	Chicago

Routing Rules

1 Location and 13 Rules found.

Key	Rule Description	Start Date	Exclusion Rule	Customer	Ship To	Ship To Name	Postal Ranges	City	State
00010	US: LTL								
00020	US: TL								
00030	US: USPS								
00040	US: UPS								
00050	US: FedEx								
00060	US: BAX Global/Schenker								
00070	INTL: CA - UPS								
00080	INTL: CA - Purolator								
00090	INTL: CA - FedEx Ground								
00100	INTL: UPS - All countries								
00110	INTL: DHL - All countries								
00120	INTL: FedEx - All countries								
00130	INTL: Use BAX/Schenker								

© 2010 Precision Software, a division of QAD Inc.

Scan Pack Ship

The following lists the high level features of Scan-Pack-Ship in the web UI.

1) Transactions

- Ability to pack an existing shipment
- Ability to identify one or more orders (or partial orders) and generate a new packed shipment.
- Concurrent users processing the same orders or adding to the same shipment will be limited\controlled.

2) Entering Scan-Pack-Ship UI

- Different methods of entering the scan-pack-ship web UI
 - In shipment packing mode
 - In consolidation packing mode
 - As a workflow task to pack a shipment

3) Base Packing features

- a) Select order(s) to pack
- b) Select an existing shipment to append a pack
- c) Create Pack and enter the pack attributes:
 - Pack type (and default pack attributes from the pack master)
 - Pack Dimensions and dimension UOM
 - Pack Weight (Tare Weight & Gross Weight)
- d) Append lines to Pack
- e) Delete a pack line
- f) Delete a pack
- g) Close a pack
- h) Open a pack for updating
- i) DB Link created between packed shipment item lines and the order item lines that were selected for packing.
- j) Allow packing to be performed via one of the following levels:
 - Item Level
 - Lot Level
 - Serial Number level
- k) When packing is at an item (or lot) level, the user may pack via ship quantities, inner quantities or outer quantities. The approach will be configured in advance at a system level.
- l) Interfacing of pack weight from a weighting scales (Scales connected directly to PC)
- m) Allow duplication of a selected pack (An alternative to similars)
- n) Ability to refresh the packing screen
- o) Ability to select/Deselect all unpacked lines

4) Scanner

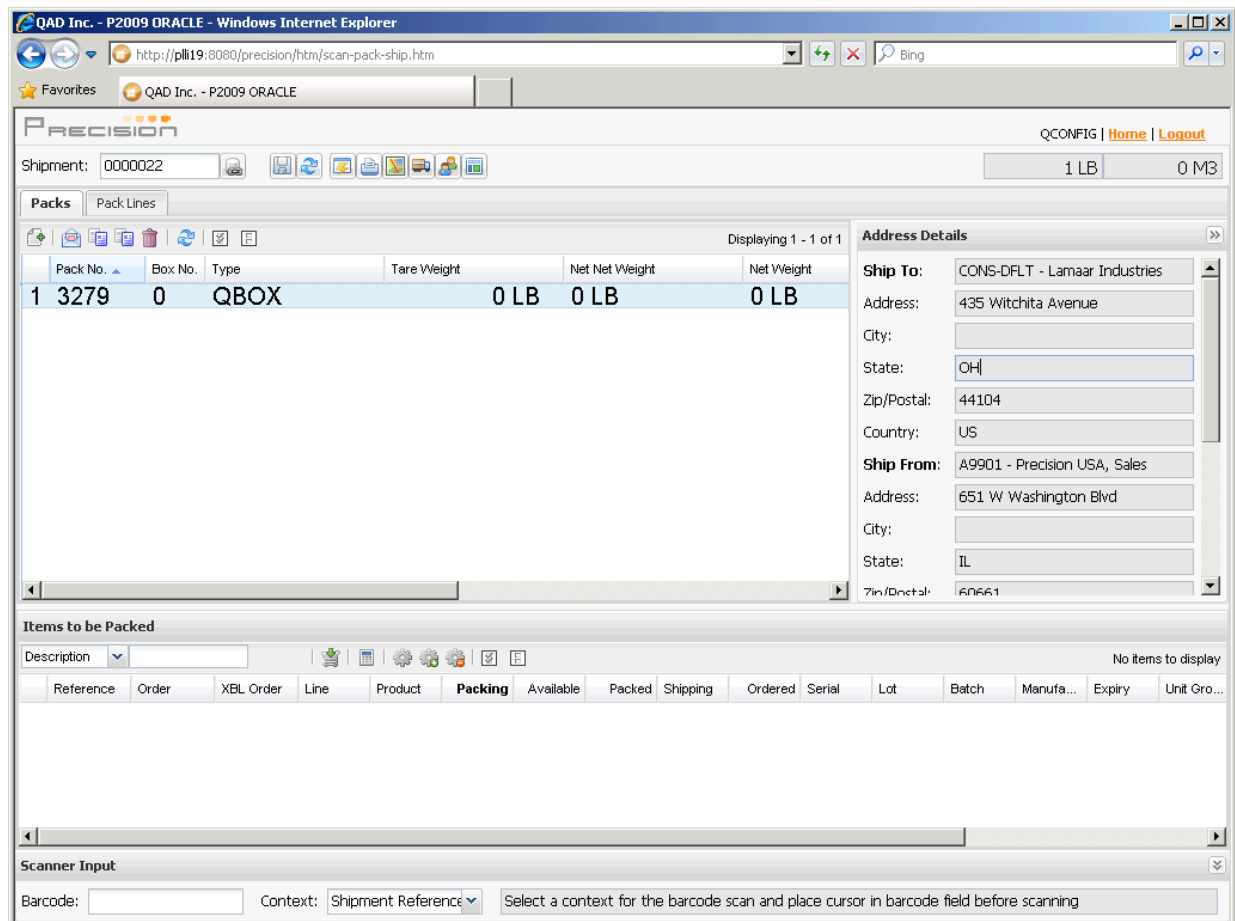
- a) Scanner input will be allowed where possible to keep keyboard/mouse input to a minimum
- b) Scanner input will be via a keyboard wedge (Serial port input not allowed)

5) Configuration

- a) Restriction criteria may be configure to limit the order transactions that may be packed together
- b) Configure logic\workflow tasks that may be run against a packed shipment
 - Carrier assignment
 - Manifest (Routing & Rating)
 - Print shipment labels
 - Print shipment documents
 - Go to Manifest Screen
- c) Allow weight/volume/dimension display formats to be configurable
- d) Ability to auto-pack the remaining unpacked items that have been identified.

6) UI Settings

- a) Standard screen resolution (smallest expected resolution): 1024 * 768
- b) Shall display record count as “x - y of z”, on each browser
- c) Fast UI response time shall be considered critical during the packing process, and will influence design/implementation decision (along with keeping Keyboard/scanner input to a minimum).
- d) UI shall display three browsers:
 - Items to be Packed (Based on the orders selected for packing)
 - Packs (Based on the shipment being generated (or packed))
 - Pack Lines (Based on the selected pack)
- e) Display running totals of pack count, pack weight(Gross) and pack volume for shipment
- f) Display running total of pack weight as items are added to a pack (Dependant on weight calculation approach)



Technical

- 1) Java 6 (Java 3.1 for Listener bridge)
- 2) Ext JS 3.2
- 3) Support for IE8/Chrome

Fixes since 4.1.0.

- Cache
 - Fix issue with table client cache not always being used.
 - Now cache Web UI options.
 - Fix problem with Unit of Measure cache. Check cache value is valid before trying to use it.
- Compliance
 - Result screen - Do not record "Compliance Override Dialog" in the "Recently Visited" pages (main menu).
- Database
 - Updated to latest version of the Apache DBCP library (v1.3).
 - Allow one enable prepared statement connection pooling through use of new database connection parameters that should be defined in the trax.properties file:
trax.db1.poolPreparedStatements=true
trax.db1.maxOpenPreparedStatements=50
 - Fixed complex queries so that count SQL statement is wrapped around entire query instead of start of query been removed for count syntax.
This ensures complex count queries work correctly in MSSQL.
 - Fixed "concat" SQL errors which occurred when PEM and Workflow used against a MS SQL Server database.
- Desktop Shipping
 - Can now specify the default payment methods using the following ITRAX system values -
DTS DEFAULT FREIGHT PAY METHOD
DTS DEFAULT DUTY PAY METHOD
 - The value can be a single code or a list of codes in case the first value is not available for the given service.
 - Can now specify limited payment methods when using a mailing list.
The system value "ITRAX" "DTS ALLOWED ML PAY METHODS" should be set to:
"CREDITCARDPERSONAL,CREDITCARDCORPORATE,PREPAID"
 - Only create shipment virtual fields records in cases where the field value is blank or null.
 - Refine how large system values such as "LAST DTS INFO" are managed so large reads on the XMY3VL0 table are avoided.
 - Get shallow shipment and partner objects where possible. This is a performance improvement.
 - On the products step if there is some product code specified use that to subset any product lookup.
 - Fix issue on document step where application is unable to find shipment documents associated with the shipment.
 - Shipment currency is now set to the customs value currency of the first item.
 - Removed unnecessary retrievals of shipment information. This is a performance improvement.
 - Changed defaulting logic for "Multiple Products" check box. No longer defaults to checked if multiple packs are selected. QAD Incident CA778820.
 - Even when "Multiple Products" is selected assign default units of measure for weight, volume, quantity and value. QAD Incident CA778820.

- Fix prompt issue on document step. Unable to prompt on the charge code. QAD Incident CA779419.
- Change product prompt on product step to use current selection list. Allow product data in product field to be used to perform initial product search.
- Can now configure Desktop Shipping to use a basic create message on certain steps. This may speed up the time it takes to navigate from one step to the next as rules and route assignment logic is not performed. QAD Incident CA782954.
A new system value "ITRAX", "DTS BASIC CREATE STEPS" needs to be set to include the steps that should perform a basic create. Valid values are "ORIG,PACK,PROD,METH,SERV,ACCL,DOCS,SUMM,CONF,COMP".
Suggest setting this to "ORIG".
Note: Requires SPS update.
- Fix JS error which can occur on rate shop page when using a mailing list.
- Fix issue where no payment methods are shown when using a mailing list.
- General
 - Home link on left was not redirecting to custom main page as expected. This has been fixed.
 - Modified desktop shipping so any errors (exceptions) are directed the standard errors page. (3.0.41.1)
 - Main page now supports external links and those links can have session substitutions (<CLIENT>, <DATABASE>, <USERID>, <PACKINGLOCATION> and <LANGUAGE>).
 - Fix some minor broken links. QAD Incident CA778826.
- Inquiry
 - Fix inquiry document page so correct client is used when joining on document type. Previously multiple duplicate shipment documents were being shown on the one line.
 - Fix issue with inquiry when search against the despatch number when database is Oracle.
 - Can now disable AES functionality from the shipment inquiry which improves performance. System value "ITRAX" "INQUIRY - RETRIEVE AES INFO" configures this. By default it is set to "false".
- Load Inquiry
 - Show next button on orders tab.
 - Show tracking URL on consolidated packs tab.
 - Fix refresh issue. QAD Incident CA783115
 - Fix status search issue. QAD Incident CA784579
- Login
 - Fix null pointer exception when you try to use the CHGPWD option. QAD Incident CA781858.
 - If user id or password is blank now redirect to alternative login page if configured. QAD Incident CA782768.
 - Fix null pointer error when change password option is used.
 - Log memory usage as users are added/removed from session log. Log user count when session expires.
- Partner Maintenance
 - Fixed partner (NR) maintenance so in use flag is displayed/updated correctly.
- PEM
 - CSV file upload can now be used to feed event and alert updates from the carrier. See How To document for more information.
 - Fix issues with CSV file upload functionality.

- Fix issue with the comment task not working as expected until some other task is run. Problem with client code used was fixed.
- Include latest version of "pem-currenttrackingstatus" library. Now version 1.0.1.
- Attach comments before closing a shipping plan.
- CSV Carrier Update: Changed the last column value from "Delivered By" to "Signed For By".
- CSV Carrier Update: Can now specify timezone in the time value. Format HH:mm Z.
- CSV Carrier Update: Default timezone from consignee/consignor if no timezone can be derived from time value or location information.
- Fix bug with how Tracer Email Subject is picked up from system value.
- PEM grid is updated when a tracer is added or updated with newly updated tracer status and tracer type.
- Fixed PEM query when specifying ETA date range.
- Fixed PEM query when specifying tracer information.
- Fixed issue with CSV carrier upload functionality so it handles in transit (TRN) events.
- Included DHL carrier update changes.
- Tracking number length is 13 characters.
- Default NotificationTimeZone with instant timezone id.
- Check if the ProductType is not null before checking if it is blank.
- Disable buttons for tracer create and update after they're pressed and enable them again on reload of page.
- If no tracer document is produced handle this situation more gracefully.
- If error occurs in CSV carrier upload the error email contents are now printed out to the log for debugging in case the email server is not set up.
- For CSV carrier upload if the alert/event update does not complete successfully the shipping plan comment is no longer updated - now synch'd.
- If duplicate shipments exist for a tracking number (for CSV carrier uploads & EDI carrier messages) an error is thrown & shipment is no longer updated.
- Additional debug logging included to assist with trouble shooting.
- Fix issue where TRN updates from PEM CSV files are not being treated as scheduling updates.
QAD Incident CA798711.
- Fix some null pointer errors - QAD Incident CA790038.
- Allow one to configure how PEM determines the shipment pick up date
System value "PEM" "PICKUP DATE AS DESPATCH DATE". Value can be yes/no.
QAD Incident CA790254.
- Changed DHU Status Message. Mapped "PodSignature" from SHIPTNR message
FinalComments (start element position 396, length 30)
QAD Incident CA792749.
- Fix signature issue.
- Bug fix. Changed system value "PEM", "DHL: CREATE CARRIER DEBUG FILE" to "PEM", "DHL: CREATE CARRIER DEBUG FILES".
The key cannot be greater than 30.
- Changed lookup of a shipping plan logic using the first pack number from a multipack shipment.
Previous the search was using the last pack number.
QAD Incident CA792878.

- UPS integrated carrier now creates an X12 997 - acknowledgment everytime an X12 240 message is processed.
Before the change the X12 997 acknowledgment was created just when requested in the X12 240 field ISA14.
- Remove the leading zeros from the DHL tracking numbers before them to be used in the Integration Process.
- Additional debug logic.
- Rate Shop
 - Fix Null pointer exception when one performs a rate shop.
 - Added following carrier logos to rate shopping pages -
CHEX,CHRN,CBLX,ICL,DAC,DKPS,BAX,DHI,DHLTD,DHU,DHC,SECU,DPD,FMS,DSV,GEO,GLS,JTP
K,MORY,HCL,NOLM,PCF,PURO,PURL,RYML,SWED,TNT,ETNT,UTNT,JET,TNIN,TFLX,EMERY,US
PS,WIMB
- UCA
 - Fix issue where UCA logging can cause Java listeners to stop.
- User Maintenance
 - Allow one to search on the alternative user id. QAD Incident CA782095.
- Workflow
 - Fixed issue where shipment status code search was not working.
 - Fixed issue where shipment status code was not displayed in the Workflow grid.
 - Fix bug with unlocking of shipment when environment employs a proxy web server.
 - Fix bug with way top links are shown on the Workflow portal page.
 - Fix JS issue when Procedure Notes task is run but there are no notes to display.
 - Display "Customs Ref" field in the workflow grid.
 - Fix issue with searching on open shipments. Search previously returned both open and closed shipments.
 - Rate shop task - Packing location is now picked up from shipment rather than the session information.

Highway

Highway version is now 3.1.11.

Highway 3.1 SP11 -

- Database
 - Increased length of Settings value field to 500 characters.
 - Increased length of Keystore filename field to 100 characters.
- FTP
 - If a non FTP exception occurs when trying to connect to the FTP server then catch this exception and retry later.
 - Corrects an issue when trying to write a message to an FTP server which was offline. Message was not being queued on the DEAD queue as expected.
 - Null pointer exception occurs if ftp.certificate.chain.length is not set on the server. Fixed.

Highway 3.1 SP10.1 -

- FTP
 - If there is a problem with the FTPS certificate then output expected server certificate information to the server.log file.
 - Added new FTPS server properties
 - ftp.hostname.checking - Allows one disable hostname checking in cases where the SSL certificate does not match the FTP hostname. Valid values are yes/no. Default is "yes".
 - ftp.certificate.chain.length - Allow one to specify the number of certificates that will be returned by the server. Integer value expected. By default this is assumed to be 2.
 - Fix bug introduced with SP10. Null pointer exception occurs if ftp.certificate.chain.length is not set on the server.
- HTTP Listener/HTTP Message Posting
 - Set the response context type to be "text/xml" rather than "text/html". Fixes XML display issues when using the Web UI test page in Firefox and Chrome.
- Documentation
 - Corrected schema details provided in schema_sql.html. "LogMessage" rather than "Log" field name should be used.

Highway 3.1 SP9.2 -

- Logged Events
 - Fixed spelling issue with notification message from Highway. PICS 201000586.

Highway 3.1 SP9.1 -

- HTTP Post
 - Can now post messages to Highway using "/highway/http/SubmitPayloadMessage2". This allows you to post both synchronous and asynchronous payload message to Highway.

The SubmitPayloadMessage2 URL uses the following new Highway Settings -

HTTP_DEFAULT_ENDPOINT_ID2
HTTP_DEFAULT_MESSAGE_ID2
HTTP_DEFAULT_SYNCHRONOUS2

Highway 3.1 SP9 -

- Folder Writer
 - When a message is written to disk and the message is a String then the file encoding used can now be set using the "encoding" server property. If an "Encoding" property exists on the message then that will be used if no server property is specified.
- Folder Reader
 - When a message is read from disk the bytes are now by default assumed to be UTF8 encoded. This can be overridden by assigning a message property of "Encoding".
- JMS Reader
 - Fixed possible null pointer exception which was introduced as part of 3.1.8 changes to support Tibco JMS queues.
- Misc
 - Included "AppleWrapperDecodePlugin" plugin in Highway release.
- HttpListener
 - Modified response so information returned is always UTF-8 encoded.

Highway 3.1 SP8

- XML Data Export/Import
 - Fix issue with data import/export. Integer, double and date values were not being imported correctly.
- JMS Reader
 - Provide support for reading from Tibco JMS queues.
 - Output additional log information when JMS connection fails.
- Listener Monitoring
 - Fix issue where ping messages sent from a Highway session would not return to same Highway session when JMS clustering is used.
This could lead to false positives when reporting on a listener's availability.
New Highway Setting "JMS_IS_CLUSTERED" is needed and should be set to "yes".
New versions of HighwayConnector.dll, HighwayListener.ocx and XTHWLISN.W are needed in order to take advantage of this fix.
"JMS_IS_CLUSTERED" should not be set to "yes" without these components.

Highway 3.1 SP7 -

- FTP
 - Correct issue where certain FTP servers do not provide directory listings when queried using "../directoryName".

Highway 3.1 SP6 -

- FTP
 - Increase user field from 30 characters to 150.

- Server property value field 15 is now masked to allow one store password information such as the proxy password.
- Remove hardcoding of FTP error code (450), now uses reply error.
- New server property "ftp.proxy.password" can now be specified when a FTP proxy needing a proxy password is being used.
- MQ
 - When reading from MQ do not close the connection after each read.
- HTTP Message Submit
 - Changed parameter based message submit so that defaults can be set using the following new Highway settings:
 - HTTP_DEFAULT_MESSAGE_ID_PARAM_BASED
 - HTTP_DEFAULT_ENDPOINT_ID_PARAM_BASED
 - HTTP_DEFAULT_SYNCHRONOUS_PARAM_BASED

Highway 3.1 SP5 -

- FTP Reader
 - Changed way Highway gets a directory listing as some FTP servers did not always return the correct listing using the old method. QAD Incident CA761750.
- Export/Import Data
 - It is now possible to export Highway data from one version of Highway and import it to another version using XML export/import menu options.

Highway 3.1 SP4 -

- FTP/Folder Reader
 - Introduced a new server property that can be set against a Folder or FTP endpoint that allows one to stop Highway from reading files that are above a certain size. The new server property is "file.max.size" and details the max file size in kilobytes.
- Highway Console
 - Allow one to identify the environment Highway is being used in, i.e. TEST, QA, PRODUCTION by displaying some environment text on the login and main Highway pages. The environment text is picked up from the "highway.environment" property in the highway.properties file.
- Highway Skin
 - Added a "PRECISION" skin.
 - Added a Highway "favicon".

Installer

Fixes

- 1) Fix issue with clustered install so partition name is used to populate conf file correctly.
- 2) Fix issue with scheduler xml details created by clustered install.