



Precision Software Web UI Version 4.4.0

Release Notes
PRECISION Web UI
Version 4.4.0

July, 2011

Document Control

Conformance Standard

This Statement has three levels of conformance represented by the words:

Must / shall / will:

Denotes mandatory requirements.

Should:

Denotes requirements, which are preferred but may be waived by Precision, with good reason.

May:

Denotes requirements, which are considered useful, but are not mandatory and may be waived with discretion.

Change Control

This document is the responsibility of the Precision Project Manager. Prior to the approved release, requests for change are sent to the Author via the Microsoft Document review process. They are reviewed and either accepted or rejected by the author. It is subject to formal change control after the initial approved release (i.e.: version 1.0), and agreed changes are recorded in the Change Summary Section of the document.

Issue Control

Issue	Date	Author	Changes Made
1.0	26/July/2011	PUE	New document

Cross Reference

N/A

Abbreviations Used

PRECISION / PSL: Precision Software, a division of QAD Inc.

© 2011 Precision Software, a division of QAD Inc.

Precision Software products are copyrighted and all rights are reserved by Precision Software, a division of QAD Inc.

This document is copyrighted and all rights are reserved. No part of this document may be reproduced, transmitted, adapted, translated or electronically stored without the prior written consent of Precision Software, a division of QAD Inc.

Progress is a registered trademark of Progress Software Corporation.

Table of Contents

WEB UI	4
Scan-Pack-Ship	4
Compliance	5
PEM.....	8
Mobile	8
Workflow	9
Workflow Tasks.....	10
Technical.....	10
Fixes since 4.3.0.....	11
HIGHWAY	13
Highway 3.1 SP14.1.....	13
INSTALLER	14
Changes	14

Web UI

Web UI version is now 4.4.0.

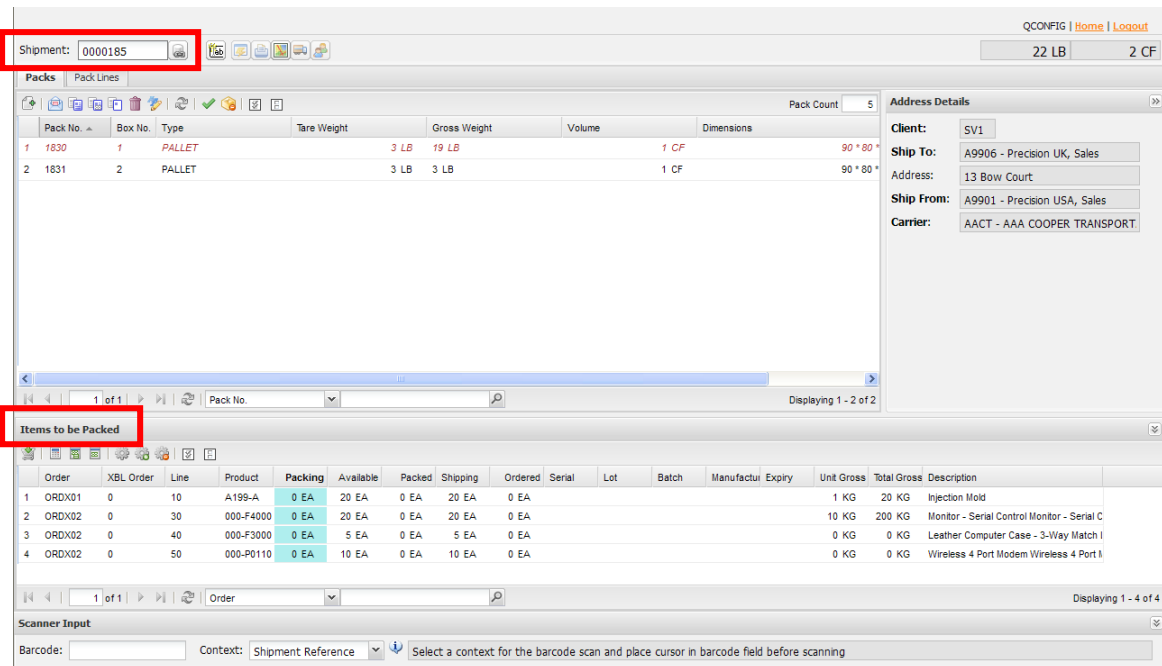
Scan-Pack-Ship

Refer to the “**PRECISION Scan-Pack-Ship Web UI Administrator Guide**” document for detailed information about Scan-Pack-Ship functionality now available.

The scan-pack-ship functionality provides three distinct packing modes:

1) Standard Packing -

In this mode the user is recording packing information for an existing shipment. The user can select a shipment to work with. Once a shipment has been pulled in the items on the shipment that have not been packed are displayed as unpacked items that are available for packing.



2) Consolidation Packing -

In this mode the user is generating new shipments by selecting and recording packing information for order lines. The user identifies one or more orders for recording packing information. The items on these orders that have not been packed are displayed as unpacked items that are available for packing. As the user records packing information for the order lines, new shipments are generated with the packing information. The user may pack multiple orders into a single shipment or multiple orders into multiple shipments. When consolidating multiple orders into a single shipment, packing restriction criteria can be configure to restrict the orders that may be mixed.

↓ Enter shipment reference and hit enter

QCONFIG | Home | Logout

Order: Shipment: 11 LB 2 CF

Packs Pack Lines

Pack No.	Box No.	Type	Tare Weight	Gross Weight	Volume	Dimensions	Closed	
1	1841	1	PALLET	3 LB	5.5 LB	1 CF	90 * 80 * 90 IN	<input type="checkbox"/>
2	1842	2	PALLET	3 LB	5.5 LB	1 CF	90 * 80 * 90 IN	<input type="checkbox"/>

Address Details

Client: DV1

Ship To: C1000-AA - World of Business

Address: 8475 ELK GROVE ROAD

Ship From: A9901 - Precision USA, Sales

Carrier:

1 of 1 | Pack No. | Displaying 1 - 2 of 2

Items to be Packed

	Consignor	Reference	Order	XBL Order	Line	Product	Packing	Available	Packed	Shipping	Ordered	Serial	Lot	Batch	Manufactur	Expiry	Unit Gross	Total Gross	Description
1	A9901	0000001		0	20	A1000000	0 EA	2 EA	13 EA	15 EA	0 EA						1.25 LB	18.75 LB	BOOTS - SIZE 7 - BLACK
2	A9901	0000001		0	40	A1000004	0 EA	3 EA	0 EA	3 EA	0 EA		LOTX				1.25 LB	3.75 LB	BOOTS - SIZE 7 - GOLD
3	A9901	0000001		0	40	A1000004	0 EA	7 EA	0 EA	7 EA	0 EA		LOTY				1.25 LB	8.75 LB	BOOTS - SIZE 7 - GOLD
4	A9901	0000001		0	50	A2000001	0 EA	5 EA	0 EA	5 EA	0 EA						1 LB	5 LB	Buttery Cheese Our butte

1 of 1 | Consignor | Displaying 1 - 4 of 4

Scanner Input

Barcode: Context: Shipment Reference Select a context for the barcode scan and place cursor in barcode field before scanning

3) Workflow Task Packing -

The standard packing screen can be run as a workflow task from within the workflow page. In this mode the shipment is pre-selected as part of running the task against a selected shipment in the workflow grid.

Compliance

- 1) It is now possible to run compliance and view compliance results as part of a Web UI workflow. Shipments and Orders visible in the Workflow page can now undergo compliance checks.

A new compliance console screen has been added to the Web UI and can be used to view the results of the compliance checks for a given transaction. This screen details the results of each individual check and the overall result for the transaction. The screen can be accessed by running the “Compliance Results” workflow task on the shipment or by using the hyperlink that is part of an e-mail alert generated by the system.

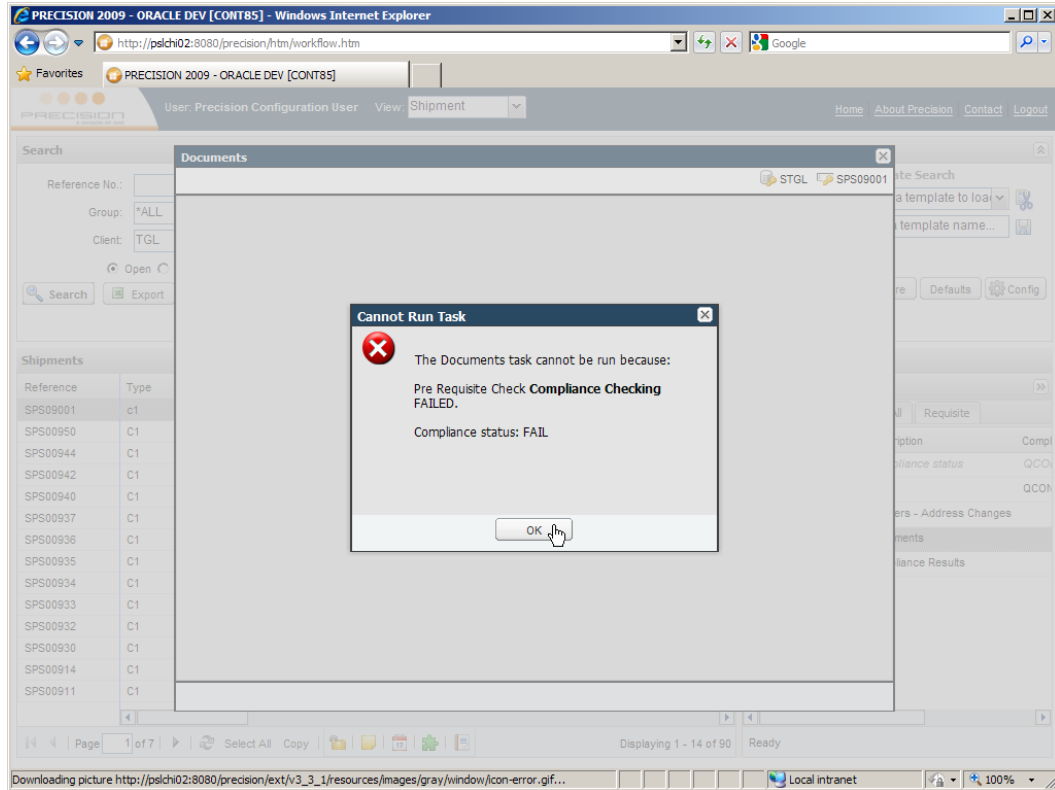
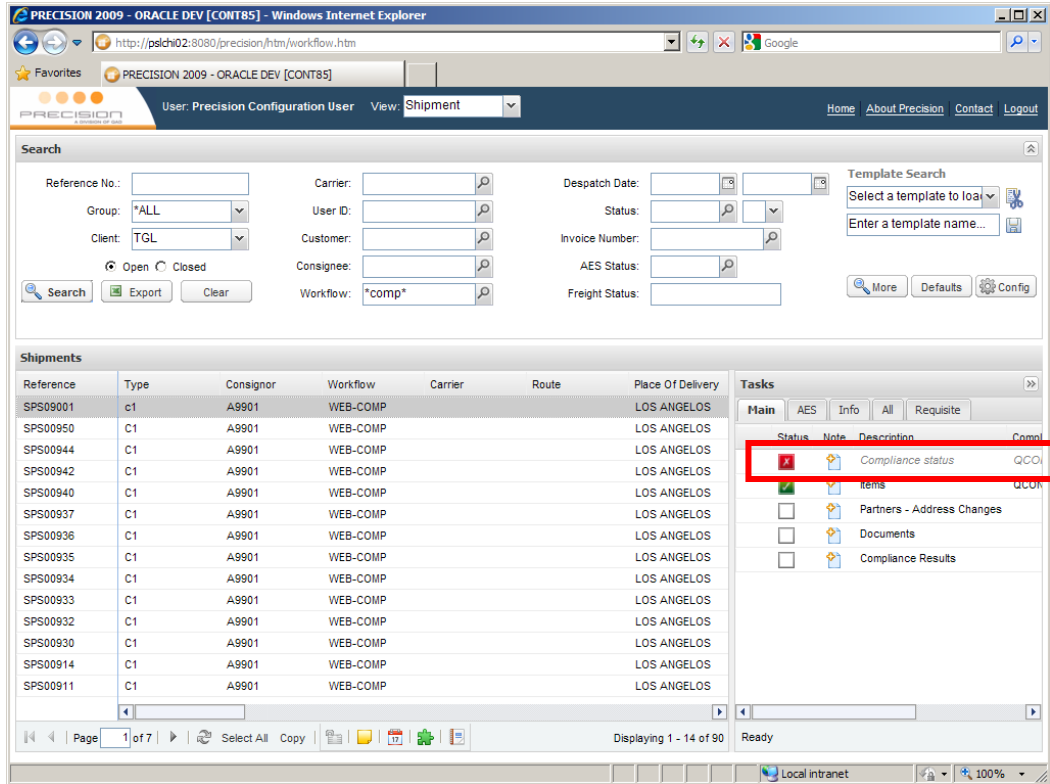
6 PRECISION —Release Notes PRECISION Web UI (4.4)

The screenshot displays the 'Compliance Results' window in the PRECISION Web UI. The window is titled 'Compliance Results' and shows a list of compliance checks and their results. The 'Compliance Checks' section lists three checks: '(DATA-INTEG) Data Integrity Check' (Passed), '(DPL) Denied Party List EX,IM' (Failed), and '(EBC) Embargoed Countries EX' (Passed). The 'Results' section shows a table of compliance results for various partners and consignees, all tested on 26/07/2011 at 12:48:58. The 'Name' field is expanded to show a list of partners, including 'The Metallurgy Industries of Khorasan - Iran (IR)' and 'TAL INDUSTRIES, INC - 901 CORPORATE CENTER DRIVE, SUITE 207, CA, 91754, MONT...'. The overall compliance status is 'Pass', and the window includes a legend for the results and a 'Close' button.

Type	Partner	Tested Date	Tested Time
BillTo		26/07/2011	12:48:58
BillTo		26/07/2011	12:48:58
Consignee		26/07/2011	12:48:58
Consignee		26/07/2011	12:48:58
Consignor		26/07/2011	12:48:58
Consignor	A9901	26/07/2011	12:48:57

Name	Score	Source
1 The Metallurgy Industries of Khorasan - Iran (IR)	76.9 %	JPC
2 TAL INDUSTRIES, INC - 901 CORPORATE CENTER DRIVE, SUITE 207, CA, 91754, MONT...	66.7 %	BIS

- 2) The overall compliance status of the transaction can be configured to show as a read only task on the Web UI workflow page. If the transaction has failed compliance this will appear as a red X. If compliance has passed it will appear as a green tick. Using existing task prerequisite functionality access to other tasks can be restricted until the shipment has passed compliance.



- 3) The compliance functionality has also now been integrated with the TMS Black Box engine. Compliance checks can be triggered in the TMS Black Box engine and the compliance results have been embedded in the TMS response message.

8 PRECISION —Release Notes PRECISION Web UI (4.4)

Please note that TMS S33 is required to take full advantage of this functionality.

- 4) A new "Permit or Guarantee" option "XG" has been introduced to allow one create and maintain permit or guarantee records.
- 5) Added a new data integrity compliance check that tests if any shipment item line has a zero value.
- 6) Modified the CSV DPL scrub functionality to allow emailing of a base64 attachments in the response.

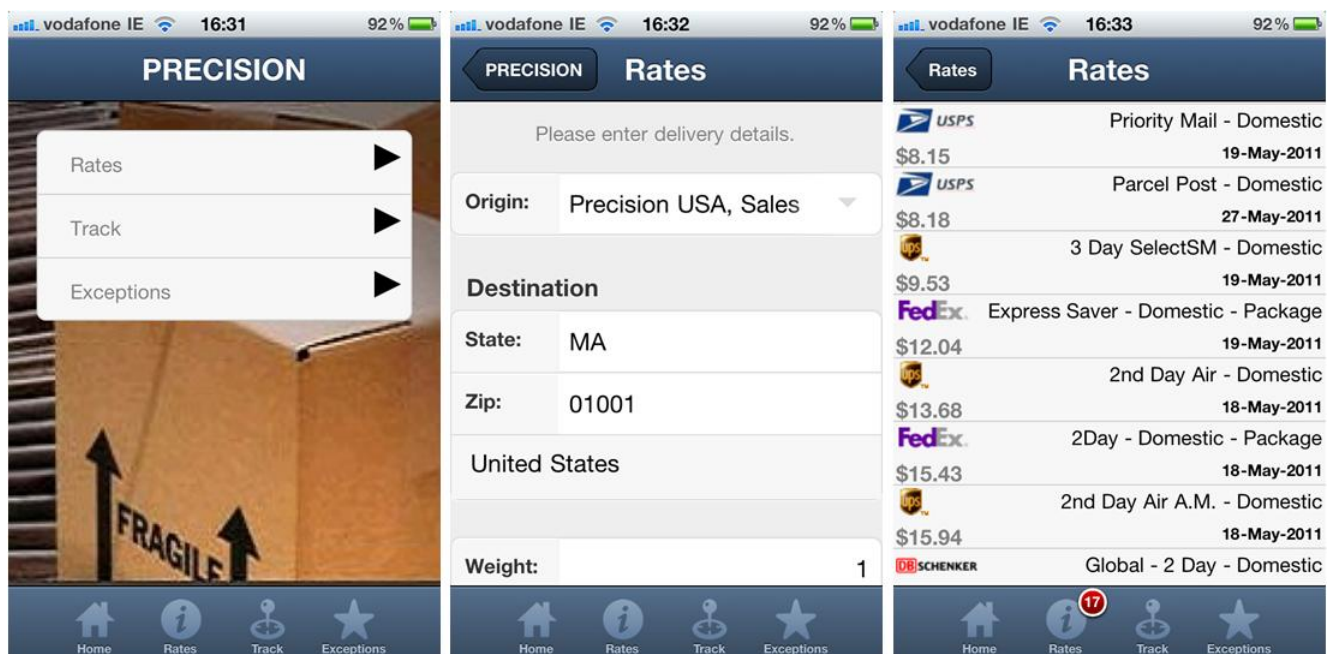
PEM

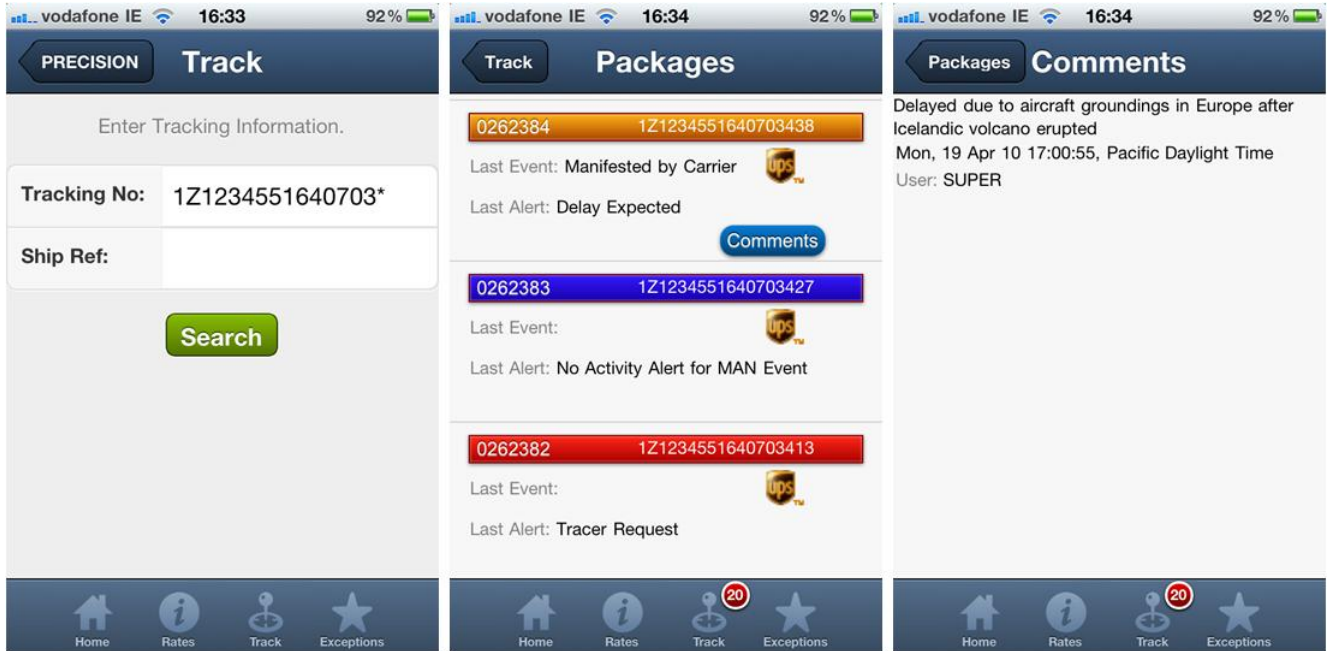
- 1) PEM integration has been extended to support TNT UK.
- 2) Added "Close Shipping Plan Tolerance" logic to the Web UI "MPH" option.
- 3) Performance/Stability
 - The handling of exceptions which can occur when the UPS Turkey web server is not available has been improved.
 - Certain PEM queries have been reviewed so as to reduce their load on the database server and reduce the memory needed by JBoss.
 - In conjunction with Highway changes (see Highway section below) the logic to process status update messages from carriers FedEx, DHL and UPS has been enhanced for better stability.

Mobile

- 1) The Web UI now contains some mobile specific pages. These pages allow one to perform a rate shop, track a shipment as well as reviewing package exceptions.

The URL for these pages in `"/precision/mobile/htm/app.htm"`.



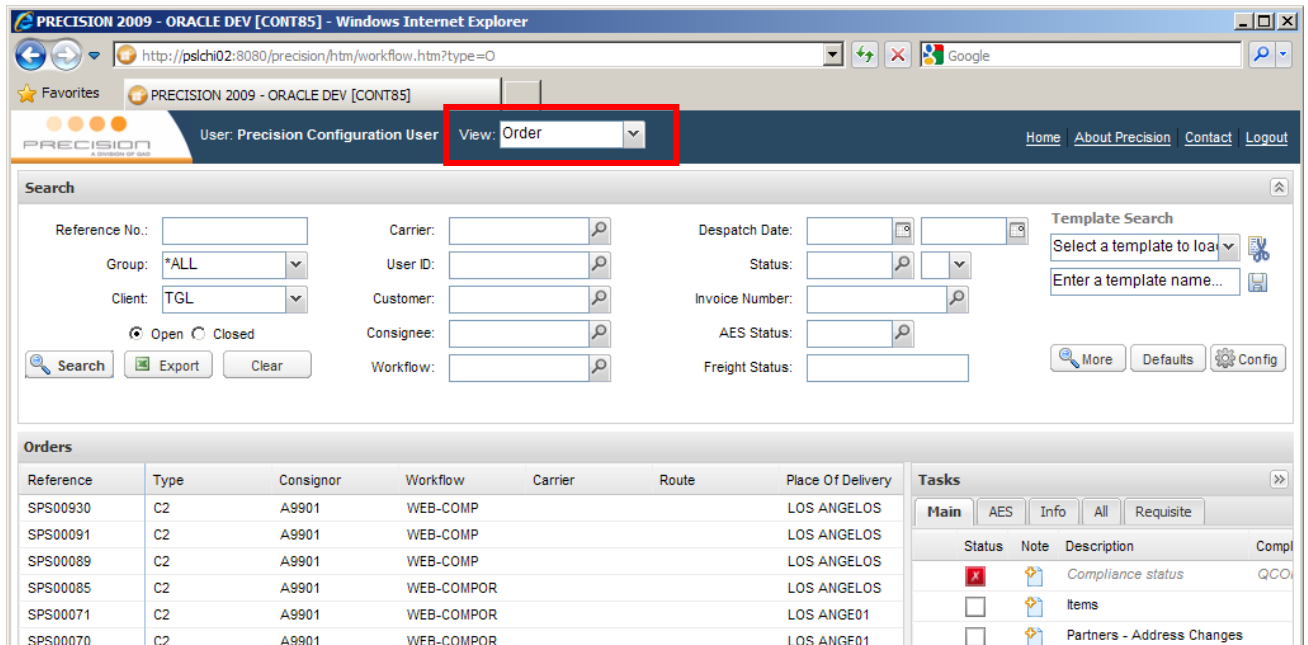


Workflow

- 1) It is now possible to develop Java checks that get called by Workflow when a task is run. The Compliance routine is now available as a Java check and can be configured to run as a workflow check before or after a selected workflow task is run.

Please note that the Java check can only be called by the Web UI workflow engine.

- 2) It is now possible to display orders or other non “S” type shipments in the Workflow page and run order level tasks.



- 3) The logic that switches client from one L3 client to another depending on the shipment selected in the Workflow grid has been updated. Also the logic that manages the transaction type has been re-factored to allow one work with multiple transactions with different types at the same time.

Workflow Tasks

- 1) AES Task: Added ability to maintain licence information from AES workflow task.

Technical

- 1) Internet Explorer 9 is now supported.
- 2) A new database pool has been introduced. The new pool is called c3p0.
- 3) The way session timeouts is handled with AJAX calls has been refined.
- 4) Added a date format to client/browser session info object.
- 5) Suppressed an error when non XML message processed by Java listener. Occurred every time EDI or CSV file processed by the listener.
- 6) Added ability to maintain Audit Trail records.
- 7) When running a task from the non workflow portal page can now specify read-only flag.

Fixes since 4.3.0.

- [PSWEB-63]: Scan-Pack-Ship: When you tab into a character field that already has data, the field is first highlighted but then highlight and cursor disappear and when you type it starts inserting at the start of the field. Fixed.
- [PSWEB-64]: Scan-Pack-Ship: When updating packs sometimes get error about unable to find item lines even though they exist. Fixed.
- [PSWEB-73]: Workflow: Changed response returned when one attempts to run an invalid workflow task from scan-pack-ship screen. Improves information available to user.
- [PSWEB-108]: Workflow: The logic that re applies rules to a shipment needs to be transaction type aware. Fixed.
- [PSWEB-121]: Scan-Pack-Ship: Column resize now working within Scan-Pack-Ship screen.
- [PSWEB-130]: Workflow: Fixed issue where shipment grid does not display correct number of transactions when page is resized.
- [PSWEB-176]: Scan-Pack-Ship: Extended data not being refreshed on shipment refresh.
- [PSWEB-191]: Permissions: Speeded up processing of permission data when logging in.
- [PSWEB-204]: Split large EDI files to reduce system memory requirements. New system value "[CARRIER]:NUMBER_OF_TRANS_IN_SPLIT" introduced to limit the number of transactions taken from an EDI files when creating an XML file for PEM processing.
- [PSWEB-209]: DPL Batch Scrub: Do not create / update partners in partner (NR) master.
- [PSWEB-222]: PEM: Fix broken link "Shipment Details" PEM task.
- [PSWEB-233]: Workflow: Fix issue with search when "x" character hit.
- [PSWEB-237]: Desktop Shipping: Fix bug with address validation removing parts of the address because they contain the state or country codes.
- [PSWEB-244]: Desktop Shipping: Fix issue with the rate shop step, correct problem with the sorting of rates.
- [PSWEB-262]: PEM: Fix SQL error when run against a V7 database - java.sql.SQLException: ORA-00904: "U##TPHDESC": invalid identifier error
- [PSWEB-263]: EOD: Fix issue where batches for a given location and carrier are not always shown.
- [PSWEB-265]: Workflow: Cannot see "O" type shipments in Web UI workflow. Fixed.
- [PSWEB-266]: Install: Correct issues with ports assigned when clustered install selected.
- [PSWEB-268]: Desktop Shipping: Recalling ship to place was causing an issue. Fixed.
- [PSWEB-269]: Desktop Shipping: Fix same as ship from bug.
- [PSWEB-271]: PEM: Client search list not behaving as expected when using Chrome or Firefox. Fixed.
- [PSWEB-277]: Correct database SQL issues when running PEM against a v7pem database.
- [PSWEB-279]: Performance: Unit of Measure conversion logic speeded up.
- [PSWEB-280]: Quick Rate Shop: Tidy up state code validation logic.
- [PSWEB-287]: Added tooltips back to PEM multi-select client, packing location and carrier lists on the main PEM portal page.

- [PSWEB-288]: Performance: Excessive number of queries on PRTBLR0 and PRCLNT0 when running a workflow task. Fixed.
- [PSWEB-290]: Performance: EhCache found not to be always using cached values when it should. Fixed.
- [PSWEB-294]: DPL Batch Scrub: Fixed "null" appearing in e-mail list.
- [PSWEB-296]: PEM: Corrected some minor UI issues. Tooltips not showing in search lists.
- [PSWEB-307]: Desktop Shipping: Fix issue with updating products when carriage return used in comment box.
- [PSWEB-310]: Added tracking number to the PEM_ERR notification.
- [PSWEB-311]: Desktop Shipping: Bear Tracks details not being picked up for ship to when a lookup is performed.
- [PSWEB-313]: Added new TNT UK integration.
- [PSWEB-316]: Only validate that an shipper account exists on a carrier message only if the shipments doesn't exist in the PRECISION database.
- [PSWEB-317]: Desktop Shipping: Fix address validation issue. State code incorrectly removed from address when not actual address
- [PSWEB-318]: Scan-Pack-Ship: Fix issue calling workflow tasks in cases where task is not valid for given shipment.
- [PSWEB-323]: Commodity Maintenance: Fix issue where classification groups field is not showing.
- [PSWEB-324]: Fix issue with the PEM Carrier Tracking History task so the "Update Event Date" value is correctly displayed. Previously this would display as a blank. QAD Incident CA832205.
- [PSWEB-327]: Scan-Pack-Ship: External workflow task not executing because of client switching issue.
- [PSWEB-337]: PEM: Display colours in priority area when Firefox used. Previously no colours were shown.
- [PSWEB-345]: Map the VM scan type as a distinct status code similar to M1,M2,O2.
- [PSWEB-352]: A carrier account mapping change has been made for the DHL status message.

Highway

Highway version is now 3.1.14.1.

Highway 3.1 SP14.1

- FTP Reader
 - [PSHWY-14]: Fix issue with FtpReader not being able to read files from the EasyLink FTP server. A new server property "listing.parser" should be set on the FTP server record. A value of "com.precisionsoftware.highway.core.ftp.EasyLinkParser" should be specified when connecting to the EasyLink FTP server.
- Cache
 - [PSHWY-15]: Only cache data in the database cache if it has an actual id. Stops cache error from being thrown.
- SOAP Messaging
 - [PSHWY-16]: SOAP responses now include SOAP faults. The faults are taken from errors found in the XML reply message.
- FTP
 - Updated FTP library to 3.8.1. Done to help with issues getting EDI feeds from FedEx as part of the PEM process.
 - [PSHWY-9]: If same file in listing retrieved from the server then only get it the first time. Fixes issue with getting EDI feeds from DHL as part of the PEM process.

Installer

Changes

- 1) Fixed issue with clustered install. Install was not installing all the required components and updating the configuration files with the correct ports specified by the installer.
- 2) The web container was rejecting posts greater than 2MB in size. The install now sets `maxPostSize="0"` in the `server.xml` file (`\\jboss\\server\\default\\deploy\\jboss-web.deployer`).