



Release Notes - V6.0 #A07/R09

www.precisionsoftware.com

© Precision Software Limited

Precision software products are copyrighted and all rights are reserved by Precision Software Limited.

This document is copyrighted and all rights are reserved. No part of this document may be reproduced, transmitted, adapted, translated or electronically stored without the prior written consent of Precision Software Limited.

TRAXi3 ® i3Ship ® i3Trade ® i3Comply ® and XM4 ® and are registered trademarks of Precision Software Limited.

Progress ® is a registered trademark of Progress Software Corporation.

Precision Software Limited shall not be liable for errors contained herein or for incidental or consequential damage or loss in connection with the use of this document. Whilst every effort is made to eliminate errors, Precision Software Ltd. cannot be held liable for erroneous information contained herein.

Document Control

Issue Control

Issue	Date	Changes Made
1.0	18 July 05	Initial Release
1.1	15 Feb 06	Formatting Update

Cross Reference

Change Summary

Nr.	Description	Date	By whom
1	Initial Release	18/07/05	Antonia Gleeson
2	Formatting change	15/02/06	Katie Hart

Contents

Document Control	3
Issue Control.....	3
Cross Reference.....	3
Change Summary.....	3
Contents	4
Introduction	8
Application Enhancements	9
General.....	9
200332980: Rulebook – Show User Defined fields 1 – 5 on determination screen	9
200233934: Partner Roles – prompt for record when none selected.....	11
200530629: Packing – Tare Weight field now maintainable	12
200530652: Route, Booking & Container – field for Transport mode inland added.....	14
200530791: User Log-in – option to change password when expired	15
200530696: Packing Location – pack location defaults from user log in.....	18
200531175: Rules – Virtual Fields Override.....	20
200530799: Shipment Rules – Preserve text ids & notes on document	24
200530655, 200530654, 200530653: Associate documents over multiple locales	25
200330058: Document distribution list – email address	27
200335236: Assign images to shipment – show message	29
200335223: Allow header and detail lines on standard interface browser to be sorted.....	30
200437413: Export Refunds – ability to override protected fields	31
200435763: Changes to the translation tool.....	35
200435205: BASE64 ENCODE / DECODE in XML files / XML counter display.....	36
Workflow Module Enhancements	37
200437286: Additional columns added to Post / Prerequisite display	37
200532917: Calling workflow tasks from external TRAXi3 programs (for example interfaces)	37
Charge Tables Upload via Excel Enhancements	38
200531798: Extend Percentage Charge through Excel rates upload	38
200533369: Validate origin zone during Excel rates upload	38
200532542: Rating Engine - Allow “All Other States” As Rating Region	38
Freight Costing Enhancements (TH)	38
200532556: Apply a minimum to a charge that was calculated as % of another charge... ..	38
200531913: Validate ISO country code is present for zone rating	38
200531849: Allow generic freight uplift system value.....	38
Routing Guide Enhancements (FRROUT)	39
200532775: Customer partner as a Routing guide filter.....	39
Invoice Matching Enhancements (PU)	39
200533729: PU screen – additional fields displayed.....	39
Freight Shopping Enhancements	39
FRSHOP screen to allow entry of packing location (200530407)	39
SPS Enhancements	40
200435851: Only use significant characters of postcode for rating.....	40
200530980: Surcharge / accessorial generation extended characteristics	40
200530532: Prevent a shipment from rating on rating screen	40
CAPDTI Module Enhancements	41
200531005: Ability to create blank container records	41
Black Box SPS Messages	44
200530364: Mapping of Item Volume.....	44
200530363: Mapping of Item Weight.....	44
200530362: Mapping of Item Commodity Type.....	44

200532898: IATA Code Passed Through XML Message	44
200530938: Ability to automatically run compliance during Dataflow shipment create.....	44
200531681: Data integrity check for a valid NMFC Code	47
200530442: Data integrity check for Cost per unit weight.....	51
200530446: Data integrity check for ETA date versus Promise date.....	51
200530459: Allow check tasks or compliance check tasks to be moved to other statuses and groups	51
200532148: Display applicable licenses (XL)	52
200531490: Allow for product inclusion/exclusion checks to be effective in a specific date range	52
200531214: License exception was not available (SIXL screen)	53
200531213: Default value of "Tolerance Ratio" (XARATIO)	53
200531666: E-mail notification for Compliance Checks (CK) by client	53
200534019: EBC and IEBC additional countries.....	54
200531213: Ultimate Consignee field.....	54
200531213: Check Intermediate Consignee compatibility only when not blank	54
Application Fixes	54
200233934: Partner Roles mismatched parameters	54
200233934: Partner Roles tick boxes did not appear.....	54
200530143: Diary delete only selected records	55
200435005: Security key number of users	55
200333434: Shipment Partner Address Override had extra space.....	55
200436160: Navigation in Users sub option User Groups	55
200437336: Secured Task password window title bar lengthened	55
200437339: Typing error corrected	55
200437341: Removed 2nd instance of PCL radio button in DP.....	55
200437337: Workflow columns all coloured when moved to another group	56
200437335: Workflow "Break point task" checkbox re-located	56
200530898: Partner Roles Order by radio buttons title change	56
200437525: Workflow spelling errors in INFO pop-up corrected	56
200530655: Literal change on Associate Document to all Locales screen	56
200530654: Remain in TRAXi3 session when option selected	57
200530614: No currency conversion if same currency code	57
200436450: Program crashed when accessing sub-option that did not exist	57
200531021: System values browser update replaced carriage returns with spaces	57
200436159: Shipment documents were not displayed when no Image Register existed..	57
200530751: Binary attachments were embedded into SMTP emails.....	58
200434511: Shipment filter had error if dates were used	58
200531003: If a shipment partner does not exist on the TRAXI3 address, then the DPL check should fail	58
200531373: ECLI check failing when a licence is required for exporting an ECCN to one country	58
200435038: Declare xtrunxml.tt temp-table as NO-UNDO	58
200434433: Additional parameters for calling xthwsend.p.....	58
200532319: Large XMLs issue in the compliance engine.....	59
200530463: "&" character failing in XML parse.....	59
200533234: Compliance error after manual shipment creation	59
200531308: Spelling error in ECLI screen.....	59
200533288: Spelling error on compliance results screen	59
200531973: Compliance screen – Truncation error on AS400	59
200530735: Restrict access to relevant fields for Check and Compliance Status Task workflow task types.....	60
200436740: Licence Exception descriptions text wrapping.....	60
200531066: Compliance notifications were not sent to all partners with a specific role on a shipment	60
200531010: gethostname.p not working on Sun Solaris.....	60

200531010: smtpmail.p single compiled object for Windows & Unix	60
200530644: Embargoed country detail in TRAXi3	60
200434770: Allow selling charge of zero to be retained in SHSO option.....	60
200437579: Correct message on use of XML option if XML loading error.....	61
200531136: Remove volume-conversion debug message that was appearing during rating	61
200532747: Correct usage of “/” and “” for directory names in SPS01 option	61
200532808: Pick up Routing Guide version of Rate Shopping for Standard Interface	61
200531073: Manual Shipment Create to allow auto-create system value for on-the-fly partner record	61
200530382: Manual Shipment Create standardisation of buttons	61
Technical.....	62
200433585: Ability to clear Progress and TRAXi3 Temporary files	62
200530019: ECODE reduced in xs_si001.p.....	63
200530017, 200334678: xtckpce.w does not compile	63
200533225: Mismatched parameter error in compliance engine	63
200533802: Move compliance notification logic.....	63
200530257: Allow specific rulebook to be called by a program	63
200530621: Store label dimensions per ZPL macro upload	63
200533113: Base64 encoding to remove trailing spaces.....	64
200533339: Capture any Progress errors when running sub-options in TRAXi3	64
200435954: Don't show workflow messages for tasks run in background.....	64
200531996: Correct IPL DPI issue for conversion from ZPL	64
200531010: Sun Solaris fix.....	64
200530701: SPS Letter screen and SPS Manual Ship Create screen, now create shipment through black-box programs for consistency.....	64
200437228: Landscape PDF document	64
200531010: Rotated barcode in labels	64
200532005: Prevent the “darkness” setting being set by BarTender	65
200532022: Remove Zebra commands set by BarTender	65
200530254: Hide messages during “close shipment” task.....	65
200432268: Default shipment close task messages to YES.....	65
200534080: User-defined document procedure added back to program.....	65
200435740: MAPI logic only run if EMAIL method is “MAPI”	65
200531931: Translation tool to be able to handle array elements/variables.....	66
200330058, 200434469: Email – specify address on Rule Document & Documents.....	66
200437660,200531020,200531020: CAPDTI module – commodity code recalculation, fix delete export refund line	66
200532352: Reports, fix transactions scope	66
200532352: HTTP post, fix log directory	66
200534186: Duplicate qty in packing	66
iTRAX Data Maintenance.....	66
200530086: Ability to associate an alternative id to a TRAXi3 user id.....	66
200436249: MD5 Password Encoding applied to change password option	67
iTRAX Print Functionality.....	67
200531910: The “Black Box” Document Print process can now print as well as just generate PDF documents.....	67
200530047: The “Black Box” Document Print process was changed so that fix 200531910 remained backward compatible with earlier versions of iTRAX	67
200530176: The “Black Box” Document Print process was changed so that if it is unable to produce a PDF document it generates an error response to iTRAX.....	67
200436512/200532431: The “Black Box” Document Print process can now print a document without using document distribution lists	67
200533297: The “Black Box” Document Print process can now print a document associated with a Despatch.....	68
Highway Listener	68

200530264: User name and password used by Listener at startup has changed	68
200530965: Fix to 200530264 above	68
200530561: The Highway listener was made more robust	68
200530983: The Highway listener now has a message area.....	68
200532384: The Highway listener can now better recover from a crash	69
200532674: The Highway listener will now acknowledge a message before processing it when in recovery mode.....	69
200531643: The "HTTP" listener can now support synchronous messaging	69
200531992: The "HTTP" listener can now be run as an option.....	69
200533796: The "JMS" listener can now send an acknowledgment message	70
200534254: Fixed auto shutdown issue with "JMS" listener	70
200531939: Listener can now use a new DLL to communicate with a JMS queue	70
Compliance Tools (Internal use)	70
200531075: New Shortcut key (F2).....	70
200334413: New menu option (CKUPL)	70
200530406: New delimiter tool	70
200436991: Truncate DPL import data as per database field lengths	71
200533423: New DPL list for Iran – OFACIR	71
200531484: DPLGO tool tab order:	71
200532757: Allowed Products screen – new validation	71
Suggestions for Improved Documentation	72

Introduction

This document contains information on the changes between TRAXi3 V6.0#A06 and TRAXi3 V6.0#A07.

It does not include information on changes to the interfaces such as: PeopleSoft, Oracle ERP, SAP, etc.

It does not include information on new Small Parcel System Carrier Certifications / Approvals.

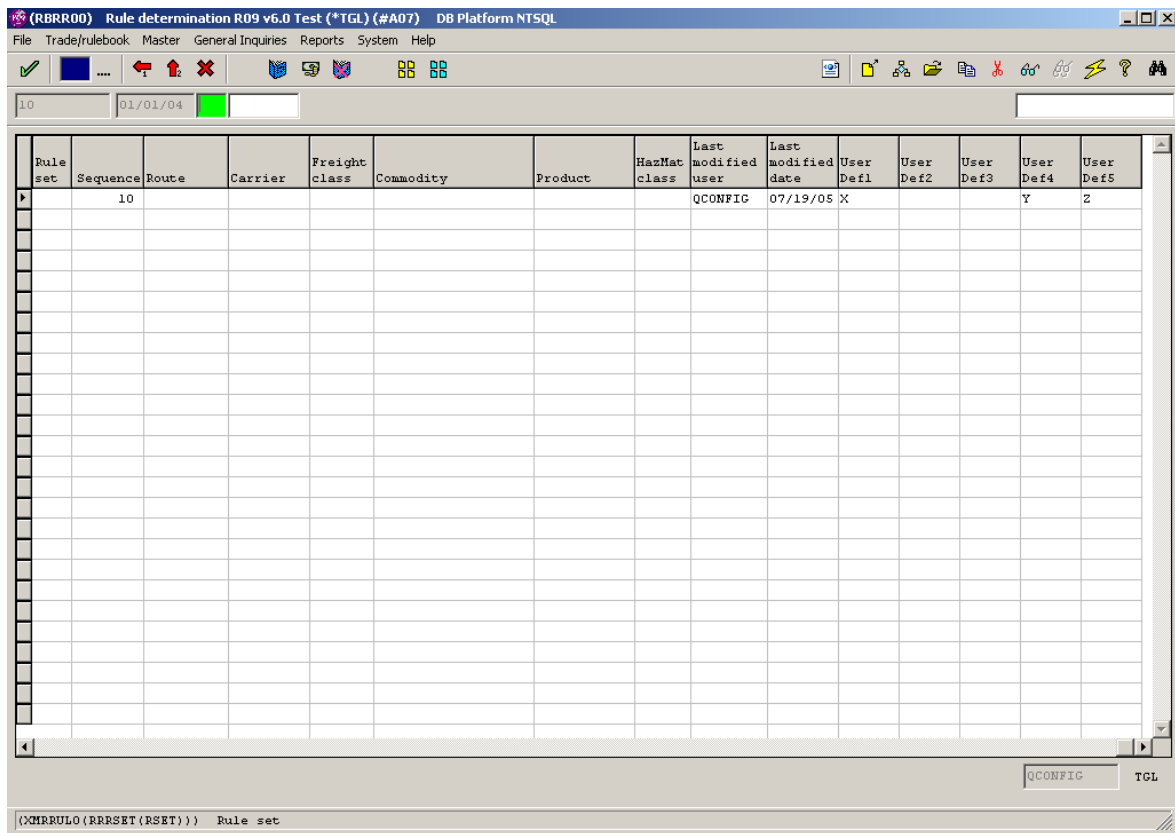
The number that appears in brackets beside each enhancement / fix is an internal PSL Ticket number and is meant for PSL use only.

Application Enhancements

General

200332980: Rulebook – Show User Defined fields 1 – 5 on determination screen

User defined fields 1 – 14 are available to use as Rulebook Rule Determination factors. Rule determination screen (RBRR00) now shows columns titled “UserDef1”, “UserDef2”, “UserDef3”, “UserDef4”, and “UserDef5”. [There is only room on this list panel to add 5 of the User Defined fields as columns.]



User Defined fields 1 – 10 are also shown on the Shipment Rules History maintenance panel (SHSU02) when “Display an entry (F10)” is selected. (Next Page)

(SHSU00) Assigned Rules R09 v6.0 Test (*TGL) (#A07) DB Platform NTSQL

File Trade/rulebook Master General Inquiries Reports System Help

PSL-USA 0222231 [Display an entry (F10)]

Rule set	Sequence	Rule book	Rule	Rule book	Charge table	Tran client	Dest	Place dest	Country of Origin	Place loadin	Pay Text
	10	T.US	US.BS.TIC						BS		
	20	T.US	US.BS.TIC						BS		
	30	T.US	US.BS.TIC						BS		
	40	T.US	US.BS.TIC						BS		
	50	T.US	US.BS.TIC						BS		
	60	T.US	US.BS.TIC						BS		
	70	10	10								

QCONFIG STGL

Search & Sort on Columns

(SHSU02) Assigned Rules R09 v6.0 Test (*TGL) (#A07) DB Platform NTSQL

Trade/rulebook Master General Inquiries Reports System Help

PSL-USA 0222231 70

Delivery terms [Yellow]

Currency [Yellow]

Payment Terms [Yellow]

Transport mode [Yellow]

Route [Yellow]

Carrier [Yellow]

Freight class [Yellow]

Classification Group [Yellow]

Commodity [Yellow]

Product [Yellow]

HazMat class [Yellow]

User Defined Field 1 [X]

User Defined Field 2 []

User Defined Field 3 []

User Defined Field 4 [Y]

User Defined Field 5 [Z]

User Defined Field 6 []

User Defined Field 7 []

User Defined Field 8 []

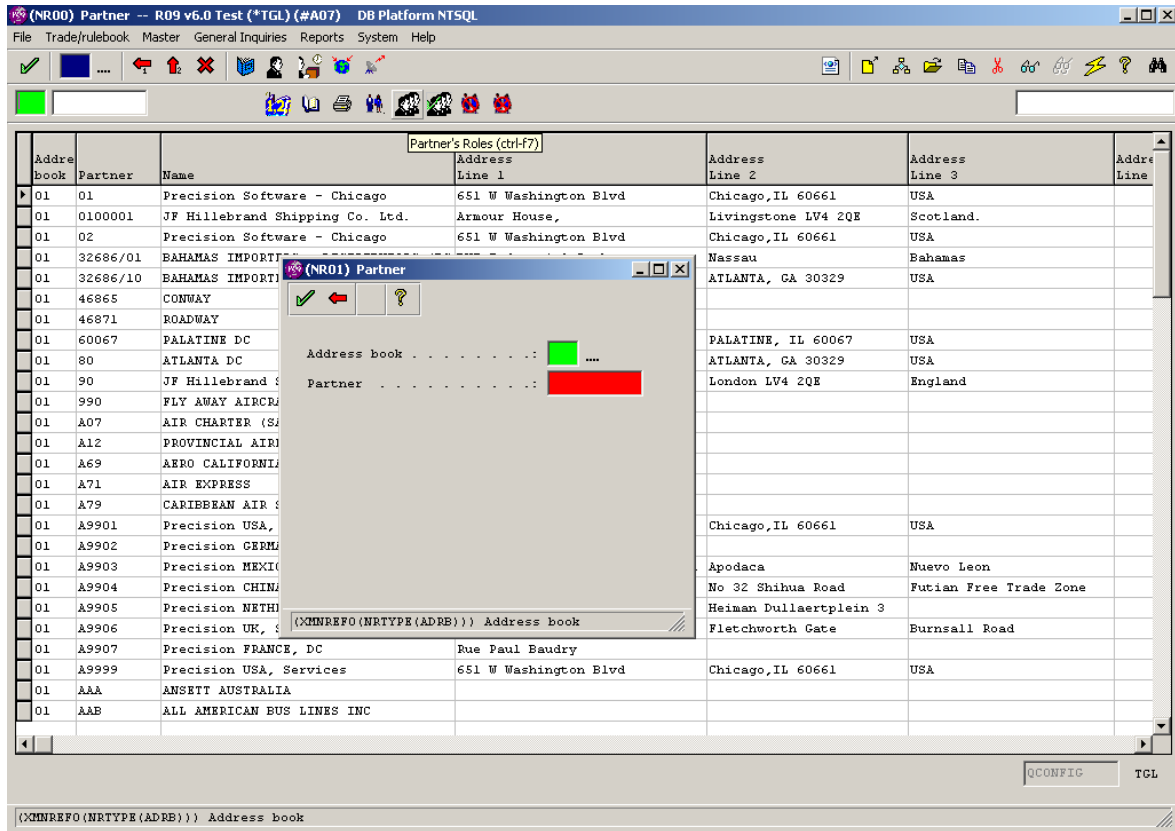
User Defined Field 9 []

User Defined Field 10 []

Select last path (SHIFT-F3)

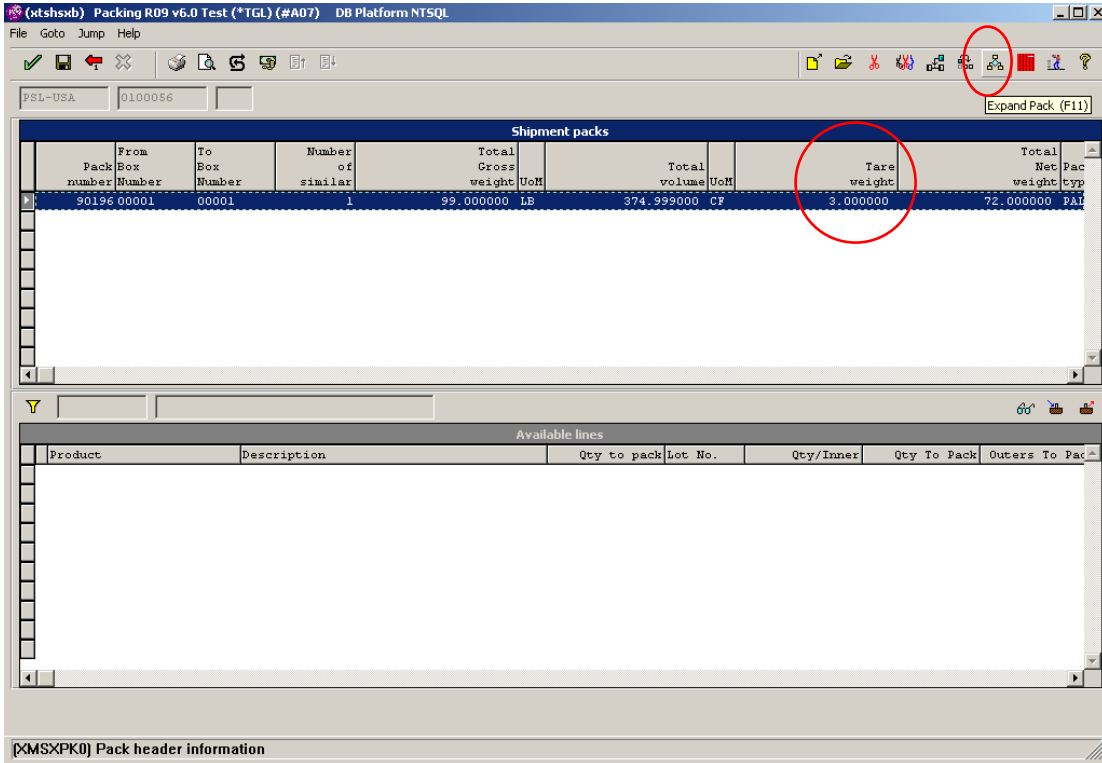
200233934: Partner Roles – prompt for record when none selected

In NR Partner Master file, if there is no row (i.e. partner) selected in the browse when a user chooses buttons “Partner Roles (CTRL-F7)” or “Switch on roles for multiple partners (CTRL-F12)”, then pop-up window NR01 appears prompting for input of address book and partner id. This same functionality is already in place with update/view/delete/copy buttons when there are no records highlighted.



200530629: Packing – Tare Weight field now maintainable

Tare weight was added to the list of fields that can be maintained on the packing screen (XMSXPK0.SXTWGT) when a pack is expanded using F11 Expand Pack on the shipment Packing screen. This is required for potential usage in Dry Ice packing.



(Continued Next Page)

SHSXP02 Packing - Pallets/Cartons R09 v6.0 Test (*TGL) (#A07) DB Platform NTSQL

File Goto Jump Help

PSL-USA 0100056 90196

Pack type : PALLET Pallet(s)

Number of similar packs : 1

Dim : 90.0000 80.0000 90.0000 IN Inch

Total volume : 374.999000 CF Cubic Feet

Total Gross weight : 99.000000 LB POUNDS

Total Net weight : 72.000000

Total Net net weight : 43.200000

Tare weight : 4.000000

Tracking Number :

Packing tier :

Load Sequence : 0

Bond status : Bonded NonBonded ActiveAddedValue

Container :

Asset id :

UPC :

Marks 1 :

Marks 2 :

Marks 3 :

Marks 4 :

Marks 5 :

[XMSXP0] (SXTWGT (KILT)) Tare weight

stshsxb Packing R09 v6.0 Test (*TGL) (#A07) DB Platform NTSQL

File Goto Jump Help

PSL-USA 0100056

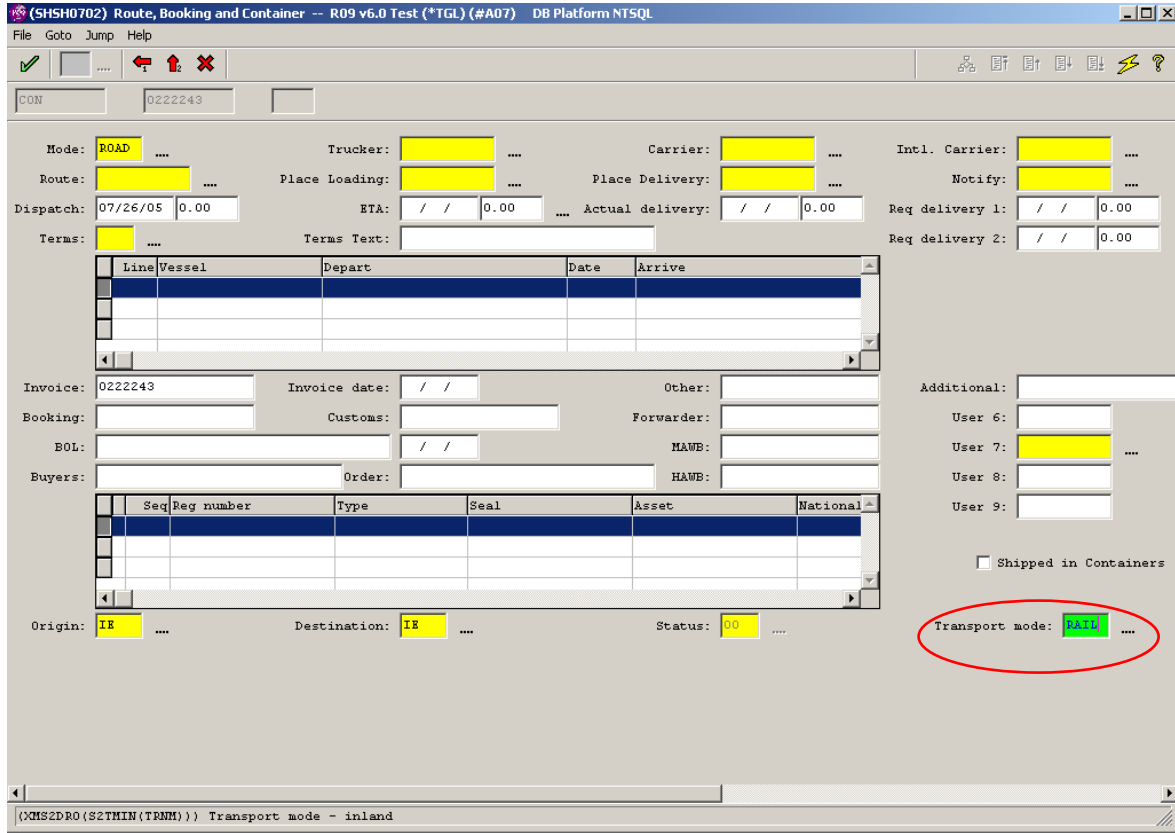
Shipment packs										
Pack Box number	From Box Number	To Box Number	Number of similar	Total Gross weight	UoM	Total volume	UoM	Tare weight	Total Net weight	Pac weight typ
90196 00001	00001	00001	1	99.000000	LB	374.999000	CF	4.000000	72.000000	PAL

Available lines							
Product	Description	Qty to pack	Lot No.	Qty/Inner	Qty To Pack	Outers To Pack	

[XMSXP0] Pack header information

200530652: Route, Booking & Container – field for Transport mode inland added

On screen Route, Booking and Container (SHSH07), a new field was added to store Inland Mode of Transport. Field is XMS2DR0.S2TMIN. The label on screen for this field is titled “Transport Mode” to facilitate alignment on screen.

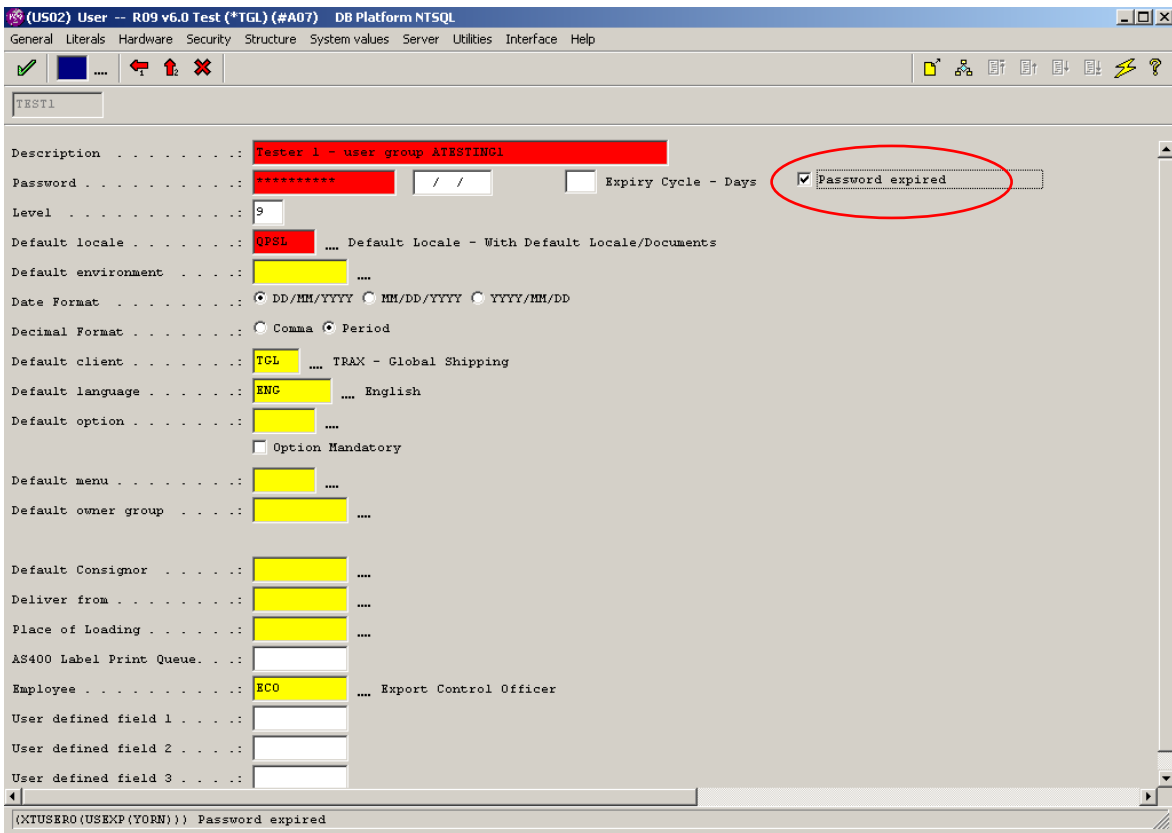


200530791: User Log-in – option to change password when expired

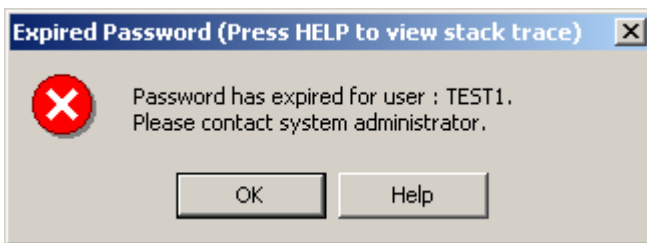
When 'Password Expired' flag is set, the user is not allowed to change password (i.e. this is a hard stop). However; if 'Password Expired' flag is not set, but 'Password Expiry Date' has been reached or passed, users are now given the option of changing password when next attempting to log in.

There is also a new field “Expiry Cycle – days” added to the User master file, which is the number of days a password is valid. On initial input, it is the length in days from today’s date for when the password will expire. Input or changing of this value automatically updates the “Password Expiry Date”. When a password has expired and a new password is entered by user on log in, the Expiry Cycle value is added to the original expiry date to create a new future expiry date.

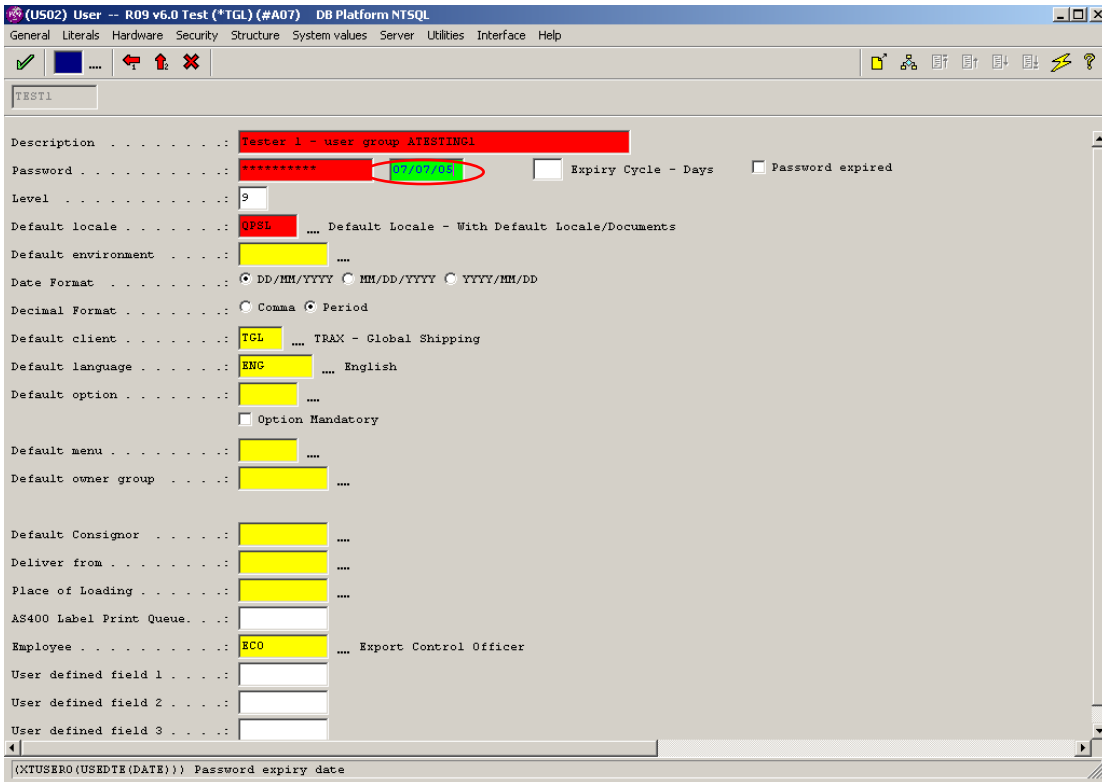
A) When password flagged as expired:



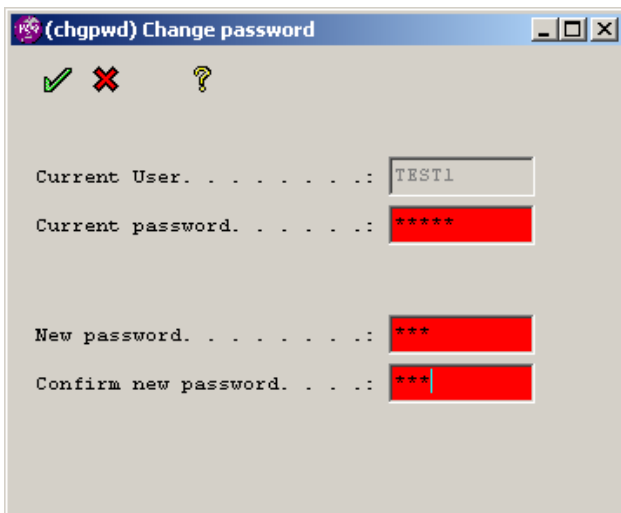
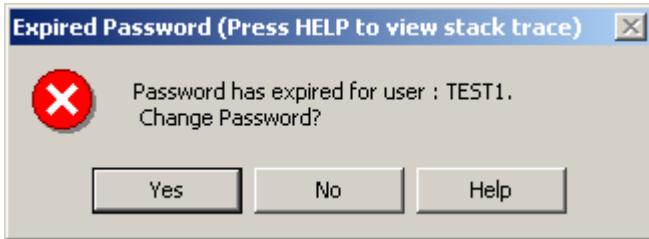
User will receive this error:



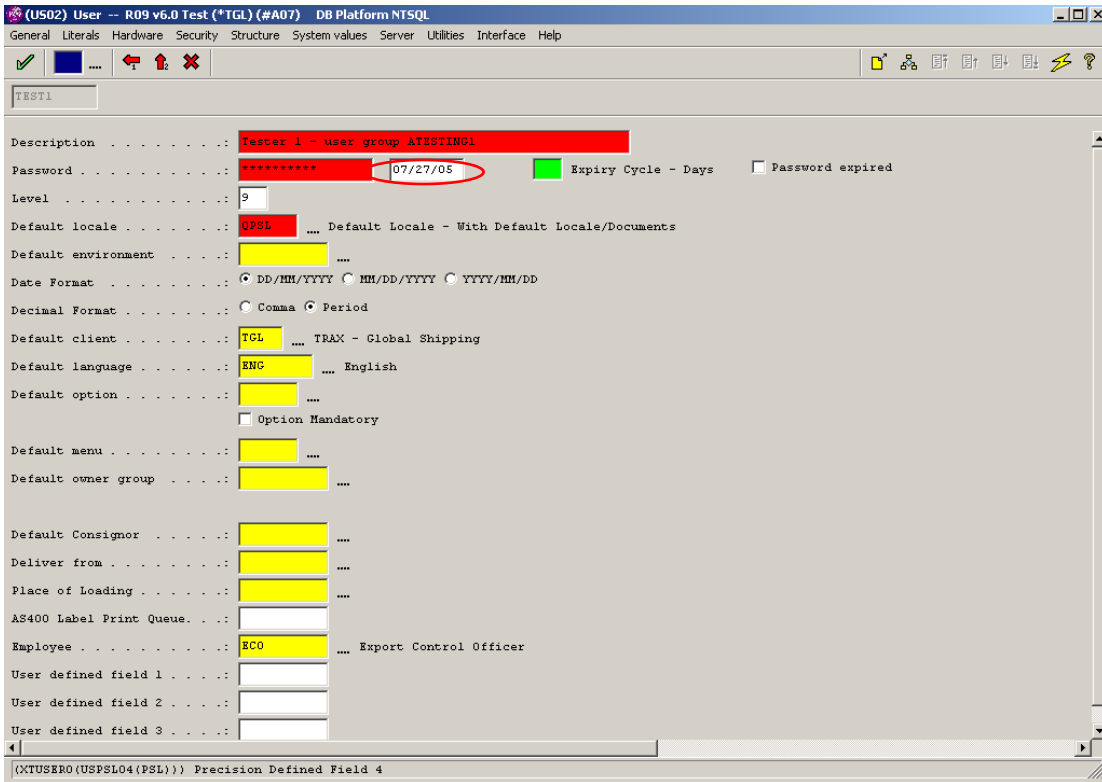
B) When password not flagged as expired, but does have an expiry date:



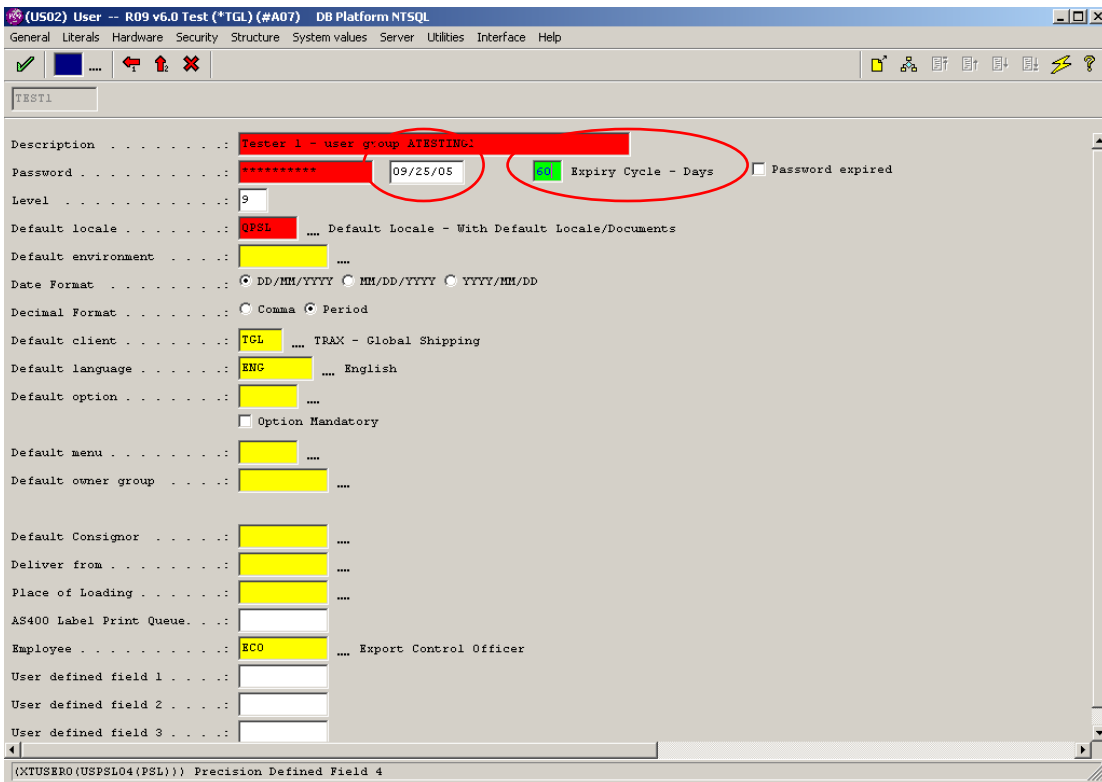
When expiry date reached, user has option to enter new password on log-in attempt:



C) Using Expiry Cycle – Days: note expiry date before input of Expiry Cycle – Days:

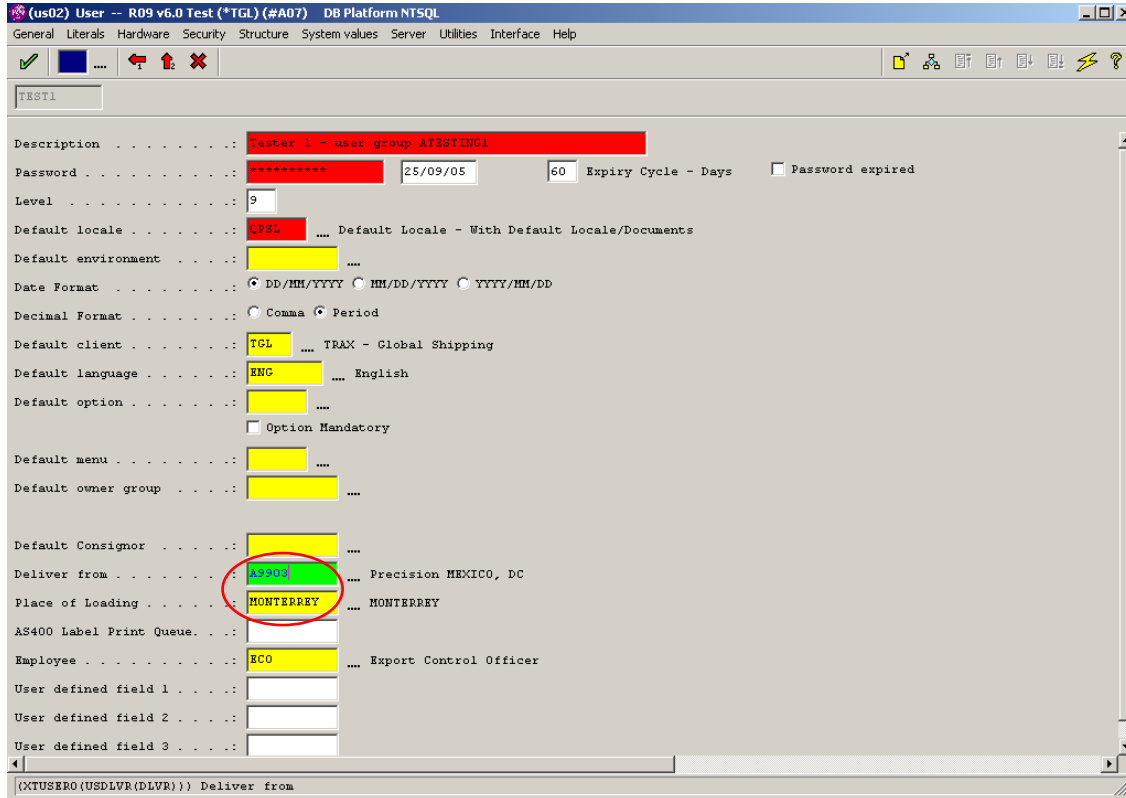


And expiry date after input of Expiry Cycle – Days:



200530696: Packing Location – pack location defaults from user log in

Packing Location is now defaulted onto the log in screen from the ‘Deliver From’ associated with the user id set up in option US. Once the Deliver From is populated on a user set up, when the user inputs their user id on the log in screen and tabs to the next field, the “Location” field on the log in screen will be automatically populated. The “Packing Location” field will also then be automatically populated on any shipment created by the user.



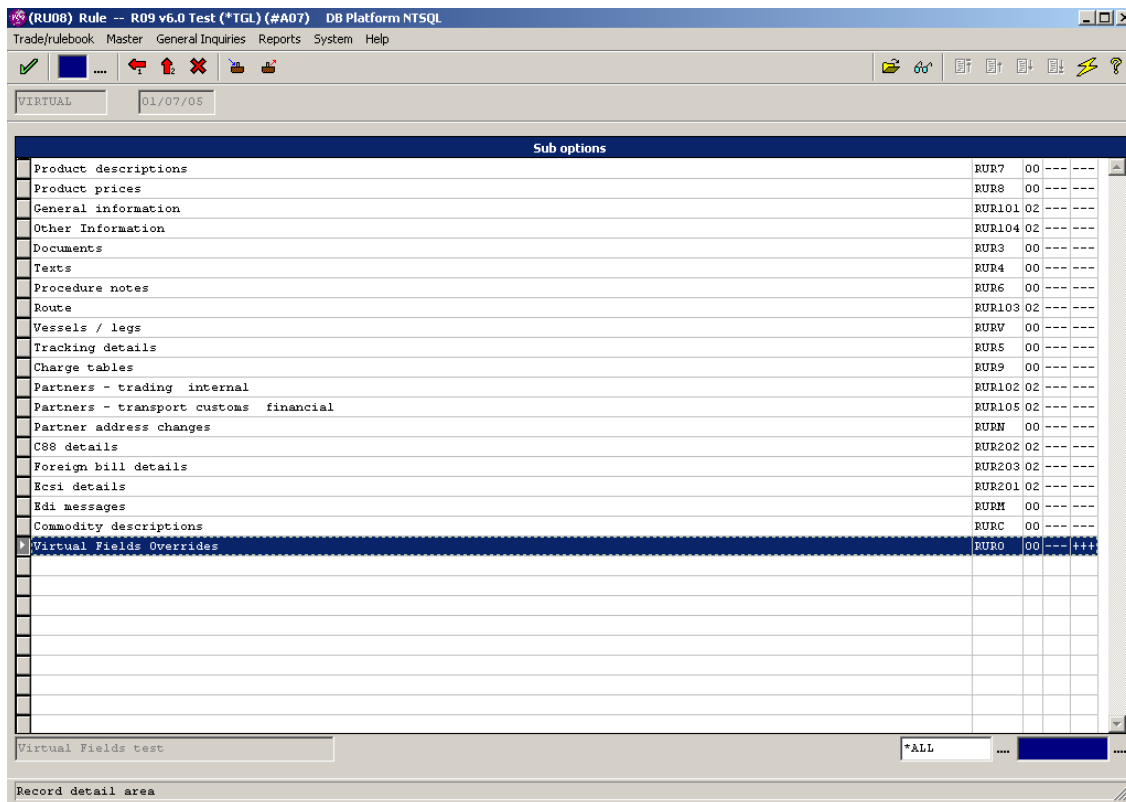
(Continued Next Page)

200531175: Rules – Virtual Fields Override

Virtual fields can be used to store information against a shipment transaction level table when there is no field available on the actual table in the database. Virtual fields should be replaced with actual fields in the next version of TRAXi3 that allows database changes.

In releases V6.0 and V5.1 #A07, it is possible to default data into the virtual fields on the shipment using rules (this could be useful for such V5.1 data as SPS Third Party Account or Packing Location etc). A new rule sub-option has been created for “Virtual Fields Override” maintenance, which allows particular virtual fields to be associated with the rule, with a value that will be assigned to the virtual field on the transaction once the rule is fired.

For example, the user’s default value for ‘Packing Location’ field (SHWHOUSE) in shipment “Manifest+Ship” task can be overridden by use of virtual field override in a rule:



(Continued Next Page)

(RUR000) Virtual Fields Overrides -- R09 v6.0 Test (*TGL) (#A07) DB Platform NTSQL

File Trade/rulebook Master General Inquiries Reports System Help

VIRTUAL 01/07/05

Line seq	Field name	Ovr data	Lan	Description
0	S219		D/B	YES
0	S2FB15		D/B	3
0	S2TEN1		D/B	to be paid 30 days after invoice date
0	SZUCDT		D/B	US
0	SHCNSE		D/B	666999
0	SHCREP		D/B	cus ref 123456 test
0	SHELC1		D/B	YES
0	SHRATE		D/B	1.27
0	SHWHOUSE		D/B	A9903

QCONFIG TCL

(XMPRODSO (ROLINE (LINE))) Line/sequence number

(SHSH0602) Charges - Manifest+Ship R09 v6.0 Test (*TGL) (#A07) DB Platform NTSQL

File Goto Jump Help

COM 0222250 Client: TCL Locale: A9901 User: QCONFIG

Ship To	Customer	Third Party	COD Party	Shipper	Shipment Info	Surcharges
Name	[Text Field]				Route	[Dropdown]
Contact name . . .	[Text Field]				Carrier	[Dropdown]
Address line 1 . .	[Text Field]				Packing Location	A9903 Precision MEXICO, DC
Address line 2 . .	[Text Field]				Terms	[Dropdown]
Address line 3 . .	[Text Field]				Dispatch date	07/29/05
Address line 4 . .	[Text Field]				Carrier A/C Number	[Text Field]
City	[Text Field]				Charge status	<input checked="" type="radio"/> Pending <input type="radio"/> Rate <input type="radio"/> Rated <input type="radio"/> Posted
Zip/Postal Code . .	[Text Field]				Freight Payment Method	Prepaid
State Code	[Text Field]				COD Payment Method	[Dropdown]
Country	IR				Duty/Tax Payment Method	[Dropdown]
Phone number . . .	[Text Field]					
Fax number	[Text Field]					

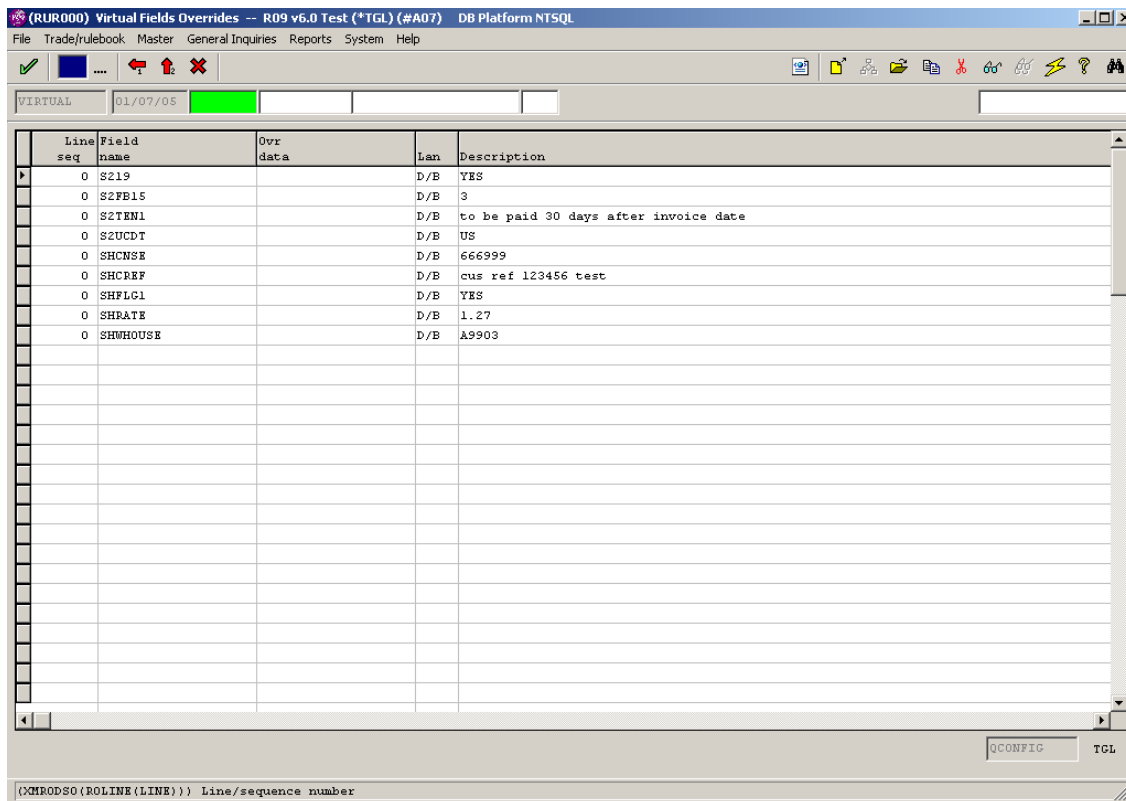
Charges Packages Errors

Pack Number	Pack Type	Gross Weight	Weight UOM	Tracking Number	Length	Width	Height	Dim UOM

With patch #A07, the rule “Virtual Fields Override” acts as a generic tool for setting values in transaction-level actual fields on the shipment header (XMSHDR0) or shipment header extension (XMS2DR0) files that are not elsewhere available in standard rules sub-options. This requirement stemmed from the fact that not every field on these tables has a corresponding field on the rule tables.

Using the “Virtual Fields Override” option of rules, the system will check whether any of the fields listed are actual fields from the shipment header (XMSHDR0) or shipment header extension (XMS2DR0), and if so, will assign the rule’s values to the actual fields rather than creating records on XMSMDS0 (shipment virtual field table). If they are not fields from either of the above two header tables, the virtual fields’ logic will work as per normal.

NOTE: The following fields must NOT be updated as these are keys to the table: client, shcono, shship, shdesp



With the above Rule Virtual Fields Override configuration, once the rule has been fired for a shipment:

- SHCREP (Customs Reference) will have value 'cus ref 123456 tes' - max length of field on the transaction
- SHCNSE (Consignee code) will have value 666999 in code field - if user tabs out of field, this value is validated against NR records
- SHRATE (Exchange rate) will have value 1.270000
- SHFLG1 (Price includes tax) checkbox will be ticked

- S2TEN1 (Tenor bill of exchange) will have value 'to be paid 30 days after invoice date'
- S2UCDT (Country of Ultimate Destination) will have value US in code field - if user tabs out of field, this value is validated against CT records
- S2FB15 (Bill of Exchange Originals) will have value 3
- S219 (Shipped in Containers) checkbox will be ticked

The values entered for the fields are not validated. The system will simply set the field specified and will not run any other logic (e.g. set the shipment country of destination based on consignee).

If utilising this feature on a SQL database, there will be an exact match on the number of characters allowed in a field, so if the Virtual Field Override value is longer than the actual shipment field length, user will get an error message when rule is applied to shipment.

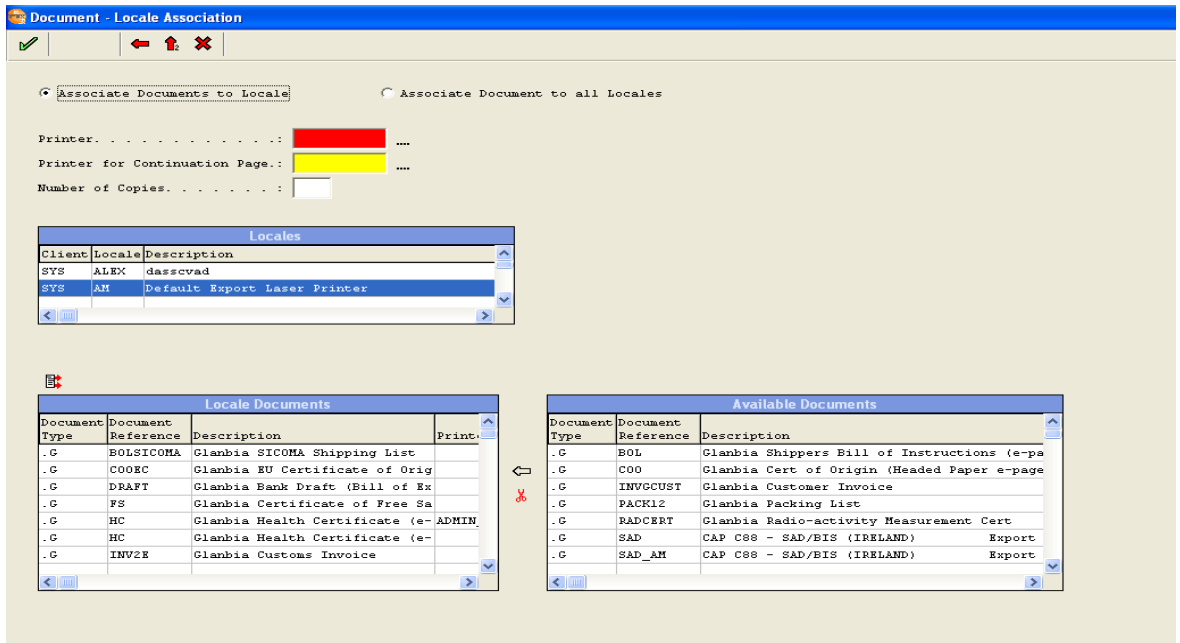
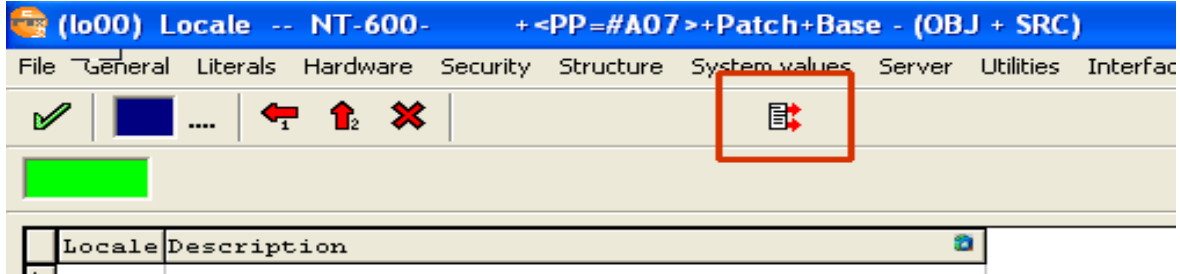
If utilising this feature on a PROGRESS database, you can enter more characters in Virtual Field Override value, but only those characters up to maximum length of actual transaction field will be applied to shipment when Virtual Override rule is run.

NOTE: It is advised that the use of Virtual Fields should be authorised by Project Manager, as not all database tables can utilise this feature, and a field may already exist in the database that suits the business requirement.

200530655, 200530654, 200530653: Associate documents over multiple locales

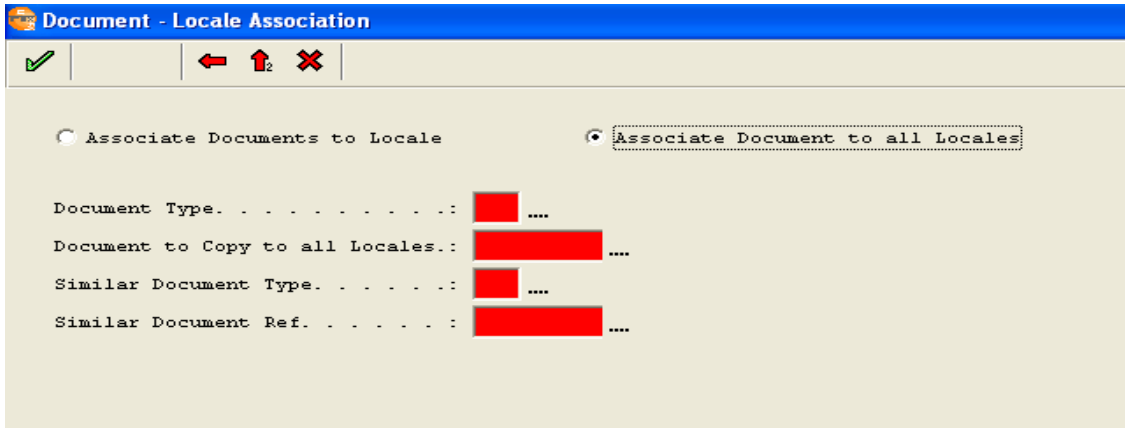
Changes relating to the Locale/Document button that allows association of documents across multiple locales.

Access the button from the LO option list panel screen:



(Continued Next Page)

Choose the “Associate documents to all Locales”:



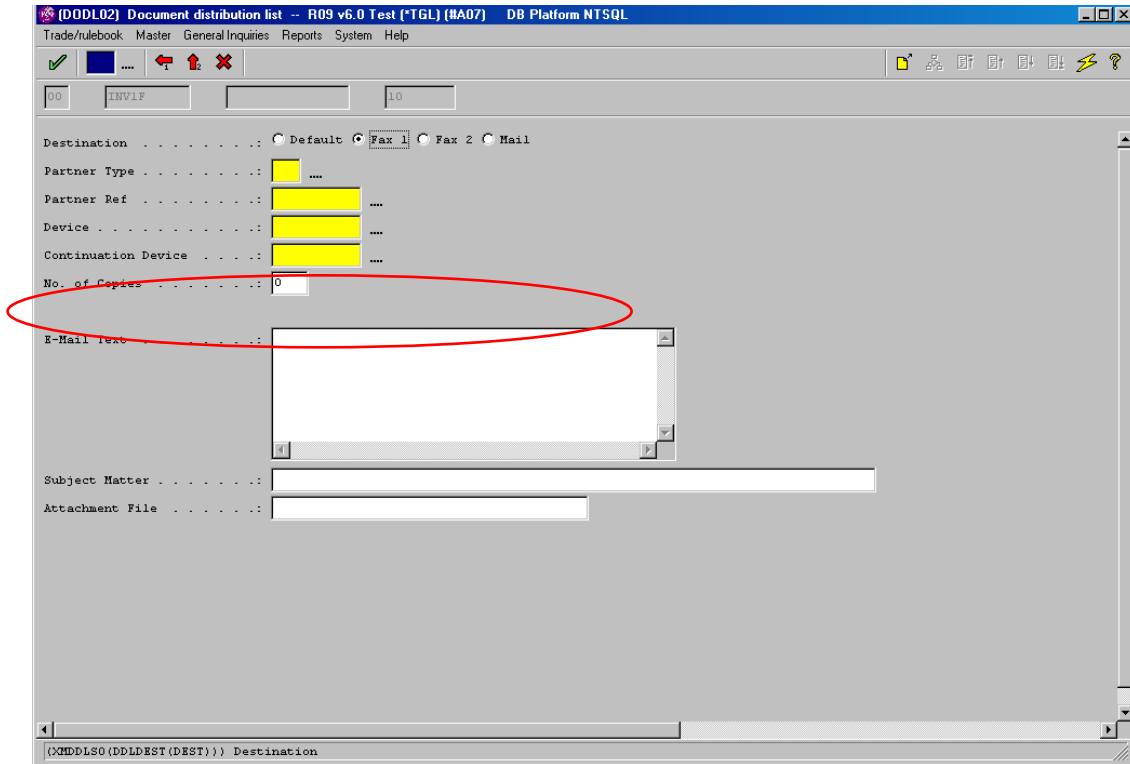
Literals on the screen have changed to make this more consistent with TRAXi3 functionality.

See Release Notes for #A05 for more information about the functionality.

200330058: Document distribution list – email address

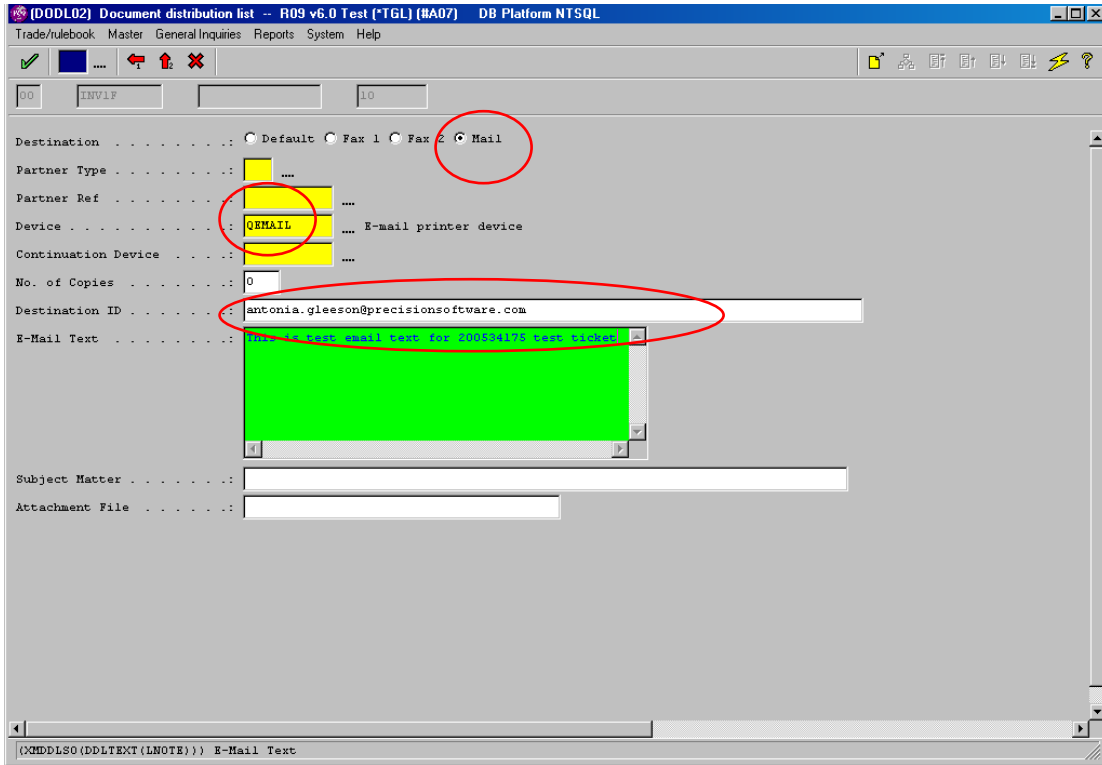
Document (DO) and Rule document (RU) distribution lists now allow for an email address to be specified as the “Destination id” when the ‘Destination’ type is set to “Mail”. This allow for easy input of email addresses in distribution lists without the need for partner contacts, which was previously the only place a destination email address could be specified.

In DO, document distribution list, before user selects ‘Destination’ of “Mail” there is no “Destination” field:

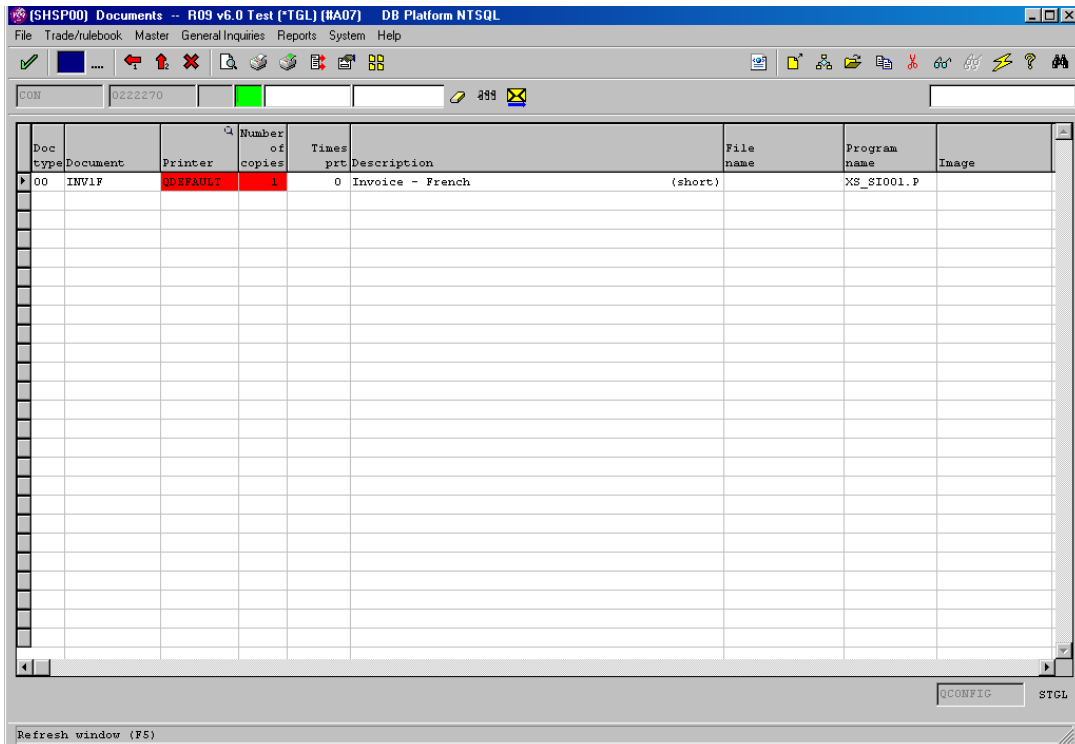


(Continued Next Page)

After select 'Destination' of "Mail", 'Destination' field is than visible for input of email address:



This email address then defaults onto the Shipment Document distribution list once the document has been added to the shipment (either manually or via rules):

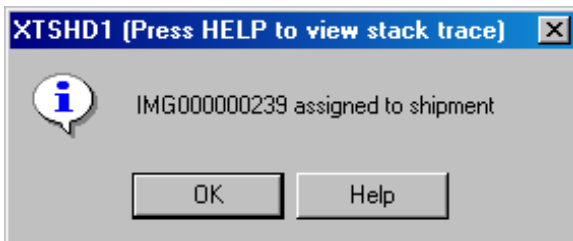
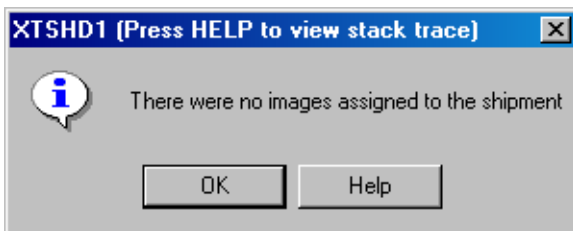


Sequence	Partner Type	Partner Ref	Contact ID	Printer Device	No. of Copies	Contact Name	Destination ID
10				QEMAIL	1		antonia.gleeson@precisionsoftware.com

200335236: Assign images to shipment – show message

On running task SHD1 “Assign images to shipment”, there is now a message issued to user.

This info type message appears if images have been assigned to the shipment or if no images are assigned (so the user knows the program did run):

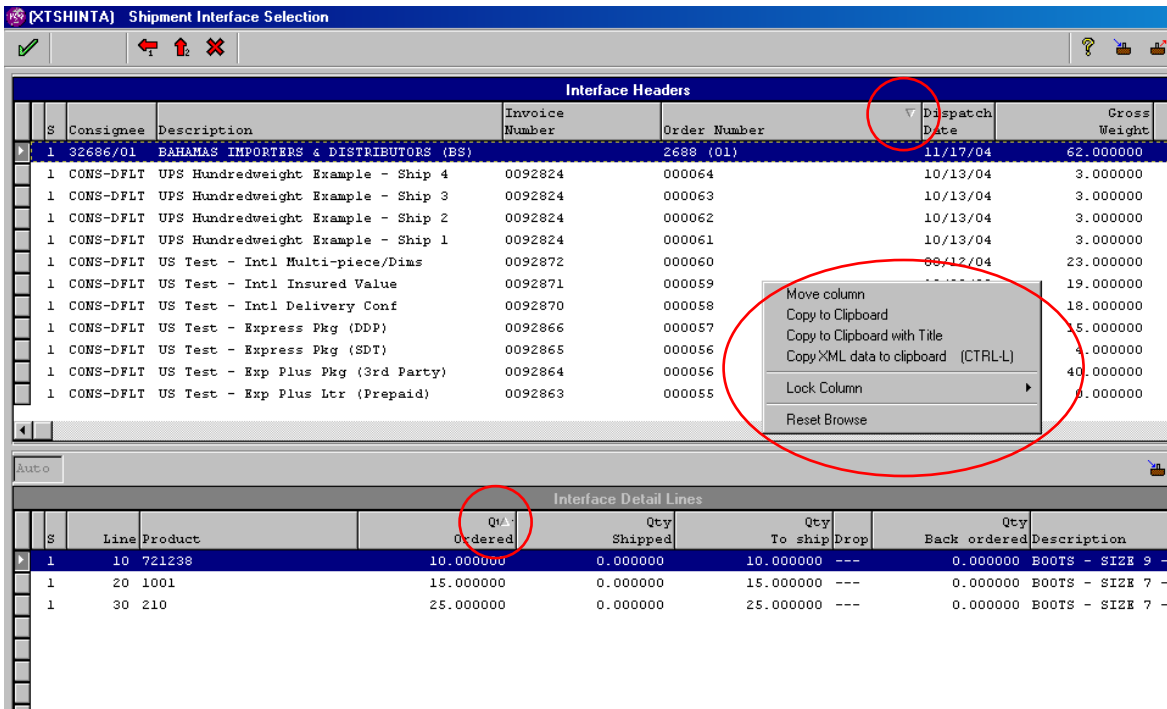


200335223: Allow header and detail lines on standard interface browser to be sorted

The “Shipment Interface Selection” browser XTSHINTA now allows the browses to be sorted as per standard list panels elsewhere in TRAXi3. Sort options are now available in a pop-up menu (opposite-click on mouse) that contains the following options:

- Move columns
- Copy to clipboard
- Copy to clipboard with Title
- Copy XML data to clipboard
- Lock Columns
- Reset Browse

Columns on both the Header section browser and Detail lines section browser can also now be sorted in Ascending or Descending sequence:



Once password is known, in BA select a Refund Cert and update:

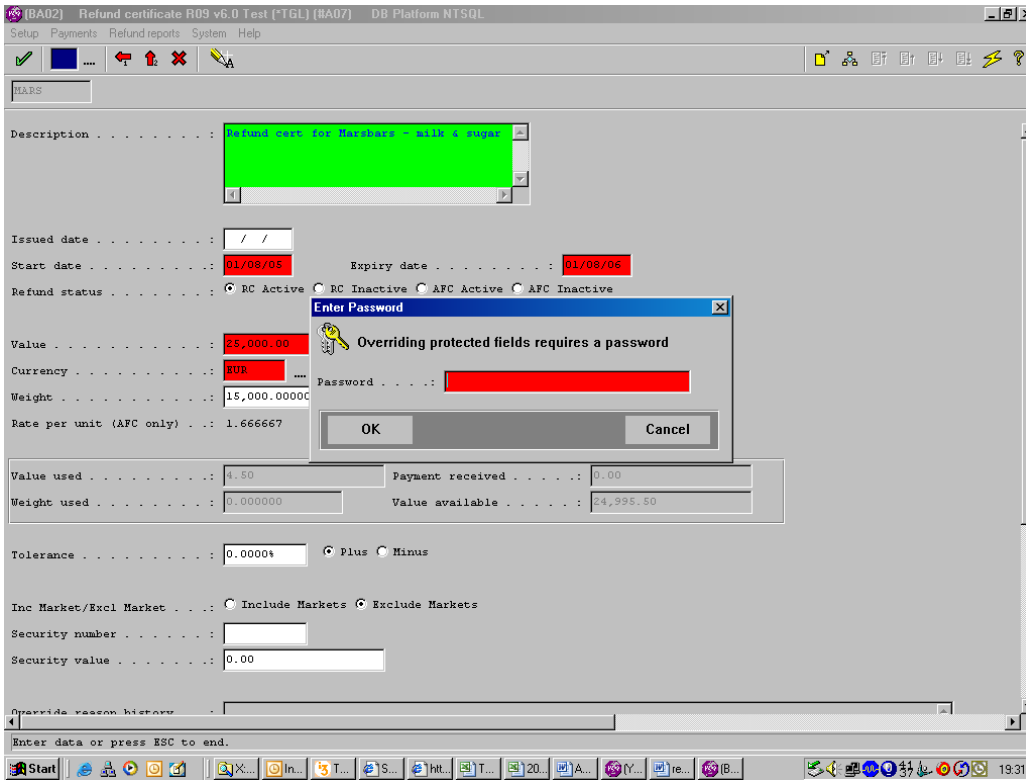
The screenshot shows a software window titled "(BA02) Refund certificate R09 v6.0 Test (*TGL) (#A07) DB Platform NTSQL". The interface includes a menu bar (Setup, Payments, Refund reports, System, Help) and a toolbar with various icons. The main area contains a form for a refund certificate. The description is "Refund cert for Macbars - with 4 sugar". The start date is 01/08/05 and the expiry date is 01/08/06. The value is 25,000.00 EUR, and the weight is 15,000.000000 KG. The "Value used" field is 4.50 and the "Weight used" field is 0.000000. The "Override Protected Fields" button is circled in red.

Fields for "Value used" and "Weight used" are protected

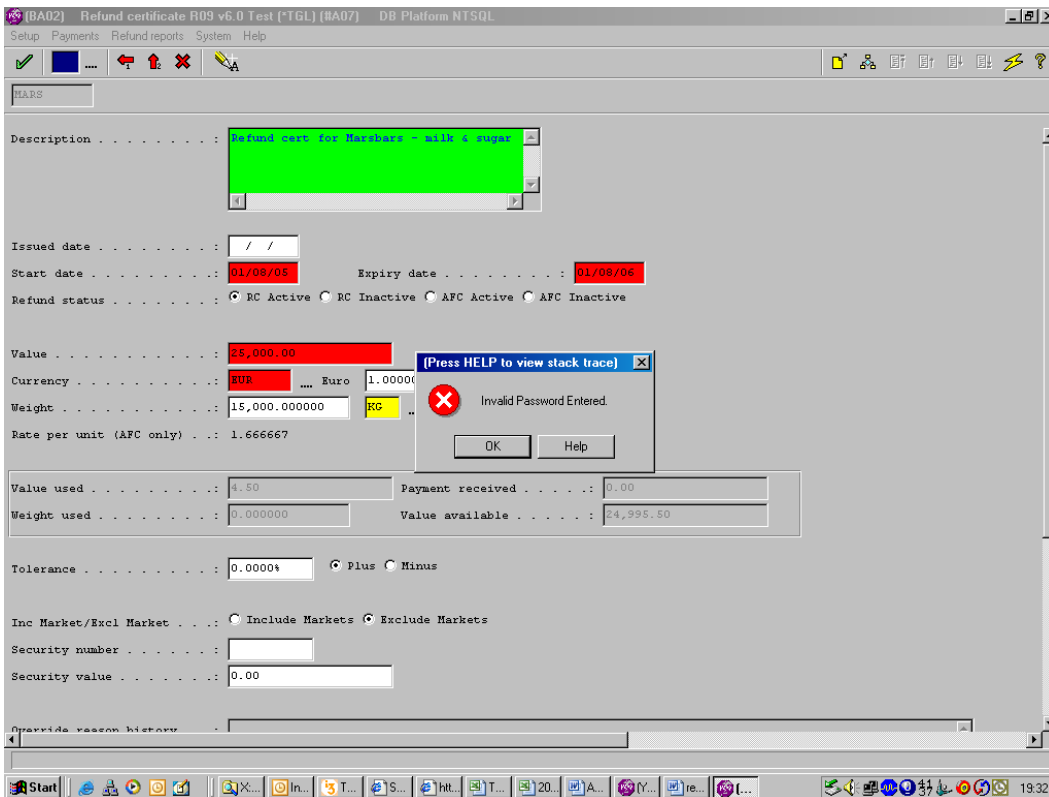
Hit the new button to "Override protected fields":

This screenshot is identical to the previous one, but the "Override Protected Fields" button in the toolbar is highlighted with a red circle. The form data remains the same.

User is prompted to enter password:



If incorrect password is entered = error:



If correct password is entered, previously protected fields are now maintainable, and user must enter an "Override reason":

A history of override reasons is kept:

The screenshot displays a software interface for a refund certificate. The window title is "Refund certificate R09 v6.0 Test (*TGL) (#A07) DB Platform NTSQL". The interface includes a menu bar (Setup, Payments, Refund reports, System, Help) and a toolbar. The main area contains several input fields and controls:

- Refund status: RC Active, RC Inactive, AFC Active, AFC Inactive
- Value: 25,000.00
- Currency: EUR, Euro, 1.0000000
- Weight: 15,000.000000, RC, Kilogram
- Rate per unit (AFC only): 1.666667
- Value used: 4.50, Payment received: 0.00
- Weight used: 10.000000, Value available: 24,995.50
- Tolerance: 0.00004, Plus, Minus
- Inc Market/Excl Market: Include Markets, Exclude Markets
- Security number: [empty field]
- Security value: 0.00
- Override reason history: User:QCONFIG Date:09/05/05 Time:19:36 transfer of weight used from sister company Old value used:4.5 New value used:4.5 Old weight used:0 New weight used:10

200435763: Changes to the translation tool

The following changes have been made to the F1 Language translation tool:

1. Display text widgets in F1 screen
2. Change F1 screen so that the length of the field which stores the system translate matches the width of the label on the screen
3. When translation is entered for a label on the F1 screen the label on the calling screen should be padded correctly with .s as the label is changed
4. Change F1 screen so that the translation of each radio-button is displayed in the browse in the F1 screen
5. If label changes dynamically within a screen when F1 is pressed the label currently displayed in "system translate field" should be the label on screen NOT the native label. Disable the screen override button for those labels
6. Change F1 screen to display the screen-values of fill-ins which are insensitive
7. Disable screen override button if appropriate
8. Titles on TABS not appearing in F1 screen (Appears for some doesn't appear for others)

200435205: BASE64 ENCODE / DECODE in XML files / XML counter display

Has been given functionality to send TRAXi3 data (which contains non printable characters, for example, PRN or ZPL macros) via an XML. This is done via system value configuration, category XML-FILE, key ENCODE:BASE64. The value is a 3 pair list: table name, field and condition (carriage returns are accepted in this system value for easy reading). The condition expression can be: COLUMN1=VALUE|COLUMN2=VALUE2|[COLUMN3=VALUE3....]. If for the table the condition is true then the field will be encoded base 64 when send via XML. Standard value is _____.

Performance has been improved while importing / exporting large XML files by displaying the counter based on a system value set-up, category XML-FILE, key COUNTER:DISPLAY. The value is a 2 pair list: number-of-records, counter-display-by (carriage returns are accepted in this system value for easy reading).

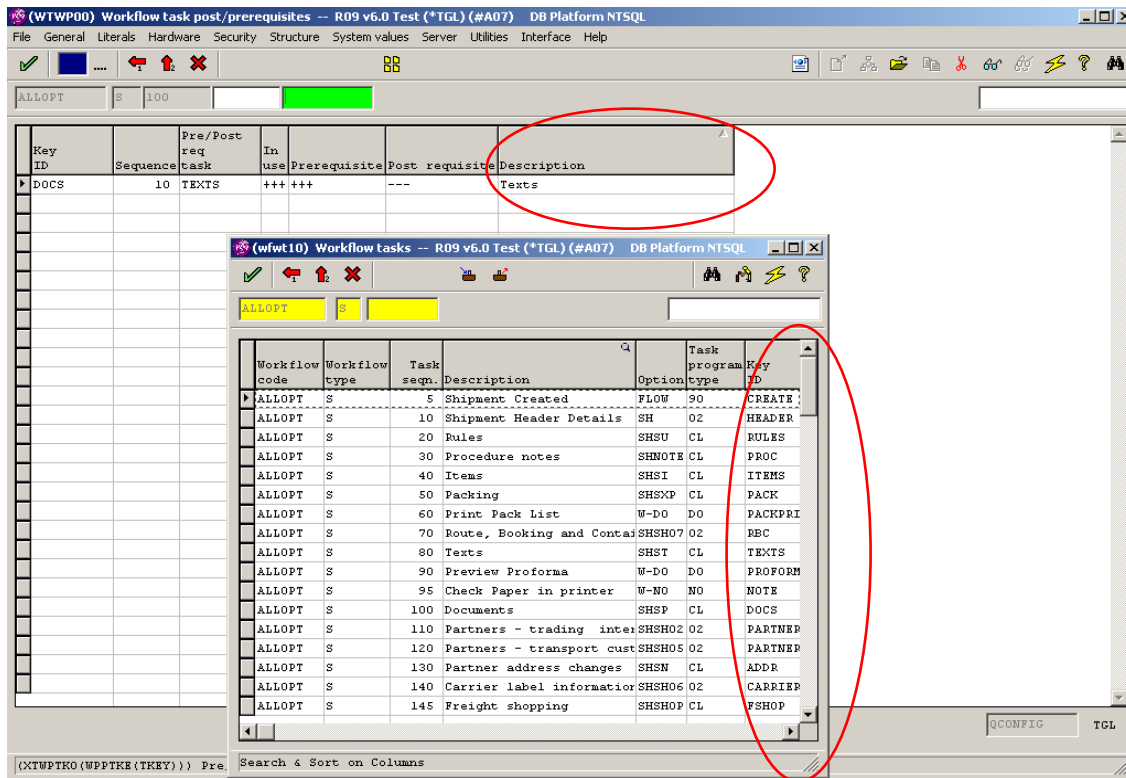
Fixed issue with warning messages during XML export when the value was not in the TRAXi3 display format.

Workflow Module Enhancements

200437286: Additional columns added to Post / Prerequisite display

In WF Workflow Configuration, for a task that has Post/Prerequisite, screen WTWP00 "Workflow task post/prerequisites" now has an extra column showing description associated with task that has been included as a post/pre requisite.

Also on this screen WTWP00, when Multi Create button is used to add task as Post/Prerequisite, pop-up screen WFWT10 listing available workflow tasks has an extra column showing Key Id associated with task.



200532917: Calling workflow tasks from external TRAXi3 programs (for example interfaces)

Added functionality of calling workflow tasks from interfaces and other TRAXi3 programs. A wrapper program xtwwrun.p was created for the include file xtwwshtk.i (with several changes to the include file to support the wrapper program). The wrapper receives the shipment key (consignor, shipment, dispatch) as parameters, a parameter to indicate the action, a background flag, and has as an error flag and error description as output parameters.

The action parameter must be defined in the system values, category FLOW_AUTO, key {Parameter}_{WorkflowCode} – action for a particular workflow code, and has as value a comma separated list of tasks. If is executing post-req tasks and non-break tasks. The key {Parameter}_{WorkflowCode}_FAIL_CONT can be defined to specify if the process should continue if one of the tasks in the list fails. The value can be YES or NO; the default action is NO (process stops when the first task fails).

Charge Tables Upload via Excel Enhancements

200531798: Extend Percentage Charge through Excel rates upload

Allow PERCENTAGECHARGE in the Excel upload to also handle a PERUNIT of CHARGE (which is for a percentage of another charge line).

For full details, see Topic039 of TRAXi3 Reference Guide.

200533369: Validate origin zone during Excel rates upload

Validation of the origin zone in the Excel upload should still apply for the country/state/city (i.e. should ensure that the origin zone is a valid one per the default types).

200532542: Rating Engine - Allow “All Other States” As Rating Region

The rating program (for standard non-integrated carriers) can now be configured to have a region that represents “all other states”. This is to allow for scenarios where zones may be set up for states A, B, C, and then one further zone is required for “all other states”

The format of the region is: **CTRY-[ctry]-STATE:999999999**

For full details, see Topic 039 of the TRAXi3 Reference Guide.

Freight Costing Enhancements (TH)

200532556: Apply a minimum to a charge that was calculated as % of another charge

Apply a minimum to a charge that was calculated as a percentage of another charge – this means that if Charge for cost type QFUEL is calculated as a percentage of QFRT, then we can also apply a minimum value to QFUEL such that it will be charged at least this minimum value.

200531913: Validate ISO country code is present for zone rating

Validate that the ISO country is present for any searches by country on the standard rating engine, in particular where zone-based rating applies - otherwise there may be problems when searching for region/postal codes etc. Warning is given if the ISO country code could not be determined.

200531849: Allow generic freight uplift system value

Allow a system value for freight uplift that is not associated with any particular service/route.

For full details, see Topic 045 of TRAXi3 Reference Guide.

SPS Enhancements

200435851: Only use significant characters of postcode for rating

When rating through the Standard Rating Engine (non-SPS), the rate engine's determination of the zones may require that for a postal code of a particular country, only SOME of the characters are used in the rating. The charge table needs to be configurable such that the relevant numbers of postal characters are used in the rating engine. This can be handled through the system value:

Category	Key	Default	Information
COST + REV	POSTAL_LENGTH - [CHARGE TABLE NAME]		[ISO Country 1], [number of characters to use], [ISO Country 2], [number of characters] etc1 Example: CA,3,US,5 The example shows that if rating for a particular charge table, only the first 3 characters of the Canadian postcode are used, only the first 5 characters of the US zip code are used

200530980: Surcharge / accessorial generation extended characteristics

Extended characteristics of shipment that can be checked on rating engine to see if cost types of particular type apply to the shipment based on Surcharges.

See:

<http://www.precisionsoftware.com/Support/SupportPage.aspx?M=SUPPORT&C=KB&IDKB=KnowledgeBase&ID=200210067>

This also allows for multiple charge tables to be defined in the one RT record (for full information on configuration of this, read Topic 045 of the TRAXi3 Reference Guide).

200530532: Prevent a shipment from rating on rating screen

Can now stop a shipment from rating if it does not meet particular criteria for some status (and other) fields. This functionality might be used if some shipments should not be rated (e.g. child shipments), or if certain details must be present in the shipper process before the shipment is allowed to be rated. This is controlled via system value:

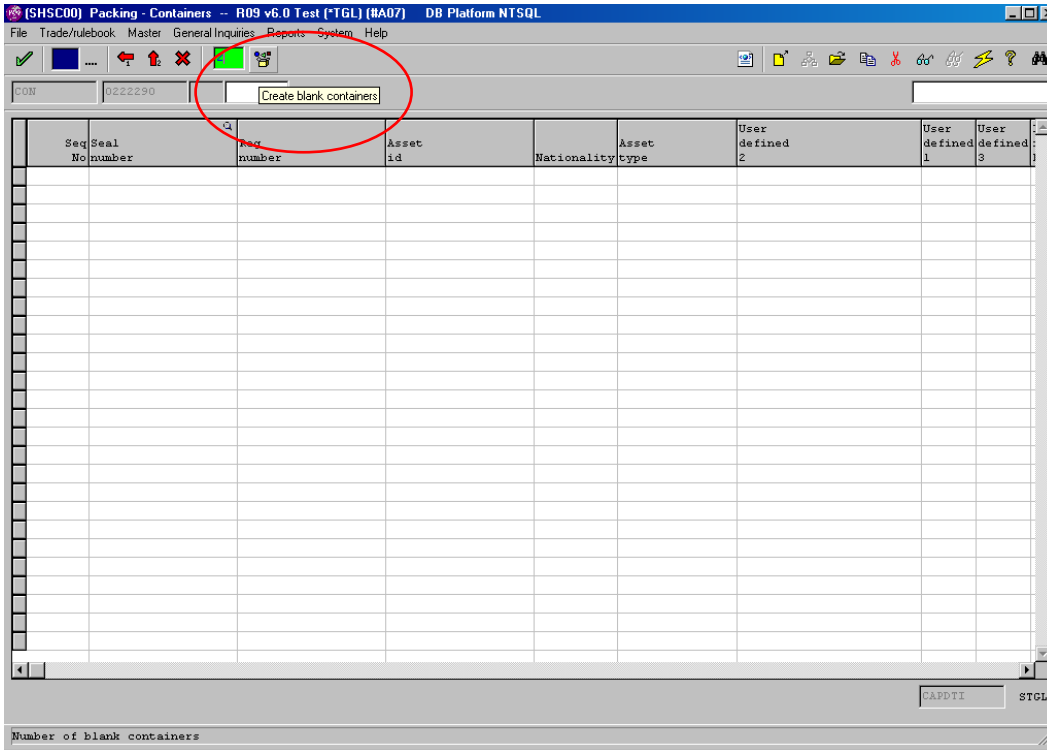
Category	Key	Default	Information
SPS	RATING - NOT APPLICABLE SHIP		Set of values of the format: KEY1=value1,value2,value3 KEY2=value1,value2 etc

Where KEY1...x can be the following:

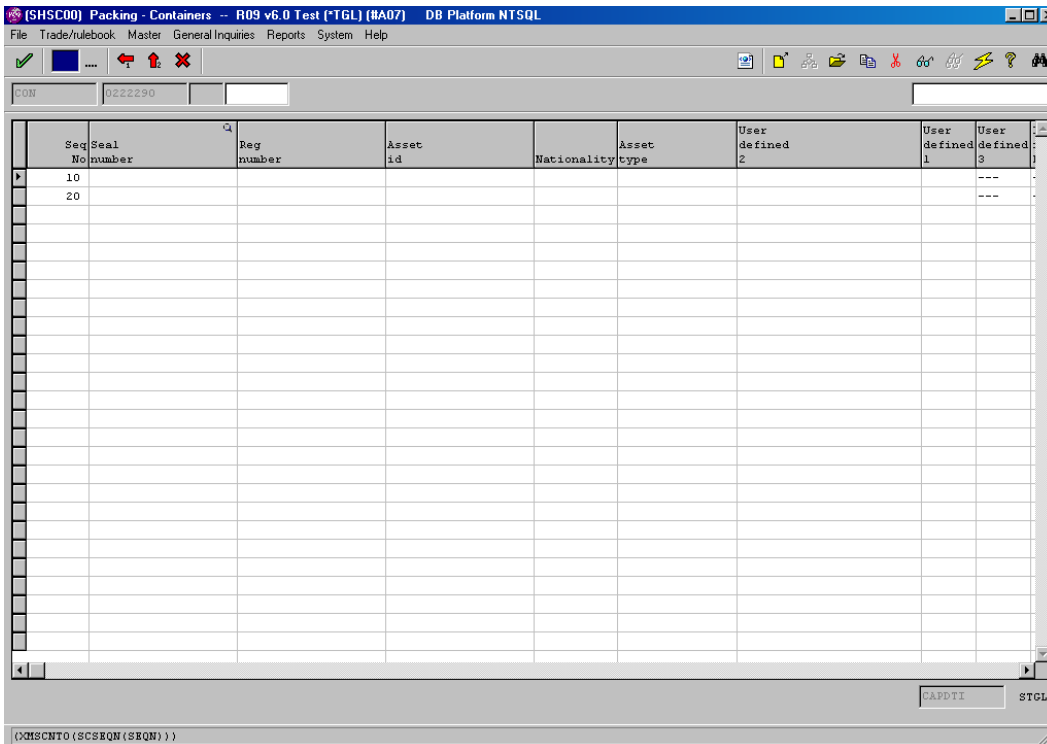
SHSTSF, SHSSTS, SHGRUP, SHOREF, SHCREf, SHFREF, SHBREF, SHEREF

Need to account for when value is "***BLANK***". If it contains that value, then if the field from the shipment checked is blank, then that shipment is not applicable for rating: (Next Page)

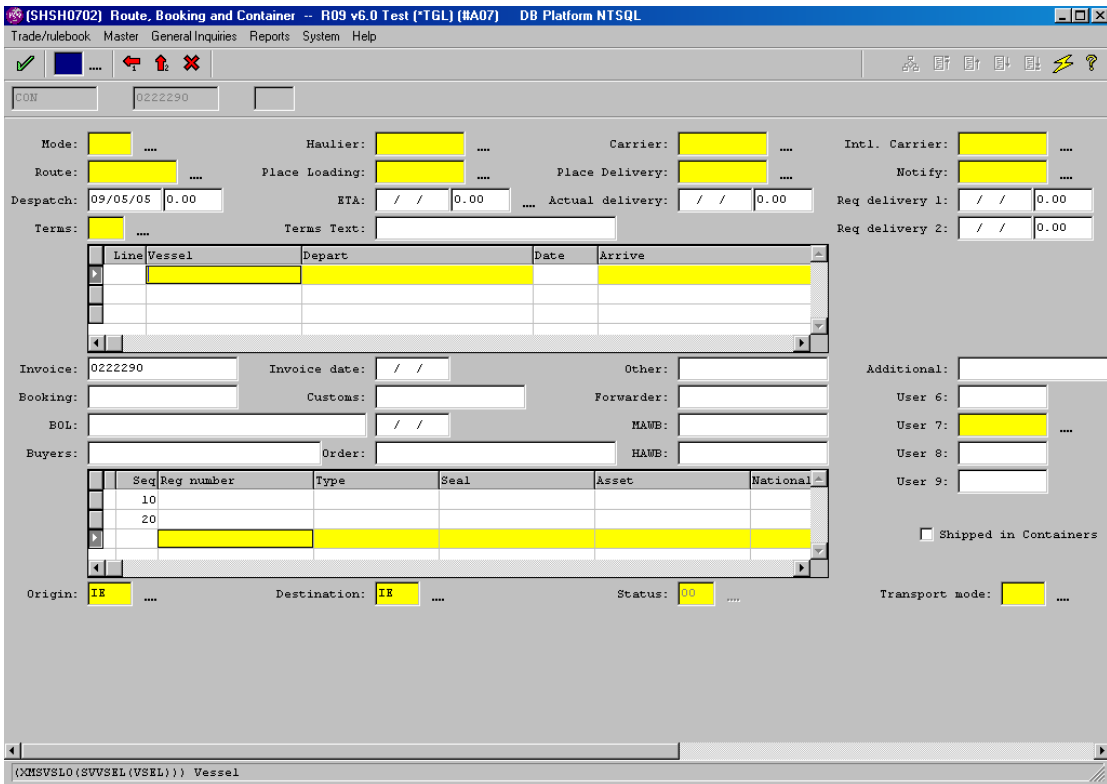
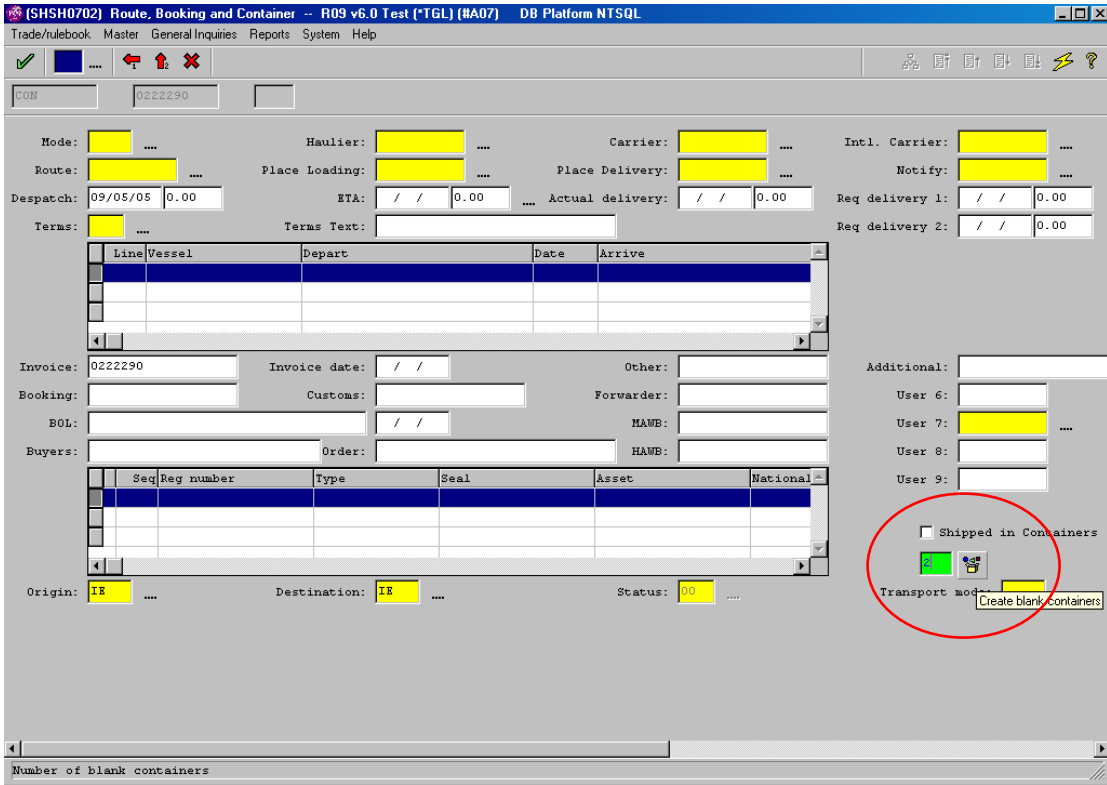
Go to shipment Containers task – SHSC00. New button and fill-in-field is available for creation of blank container records:



Fill in number of blank containers required in fill in field, and hit button to “Create blank containers”. Empty container records created:



Same "Create blank containers" button exists on the Route, Booking, Container screen SHSH07:



Black Box SPS Messages

200530364: Mapping of Item Volume

Map in the ITEM volume into the XMSITM0.SICUBT for the XML black-box interface.

200530363: Mapping of Item Weight

Map in the ITEM weight into the XMSITM0.SIGWGT for the XML black-box interface.

200530362: Mapping of Item Commodity Type

Map in correctly the commodity into XMSITM0.SIGROUP and XMSITM0.SIHGROUP per the Version 6 usage of commodity codes for the black box interface.

200532898: IATA Code Passed Through XML Message

Allow IATA code to be passed as a field in the XML for the Ship To Party, such that if the city/postal code is not present (valid), then the IATA code can be used to determine rating for the DHL services.

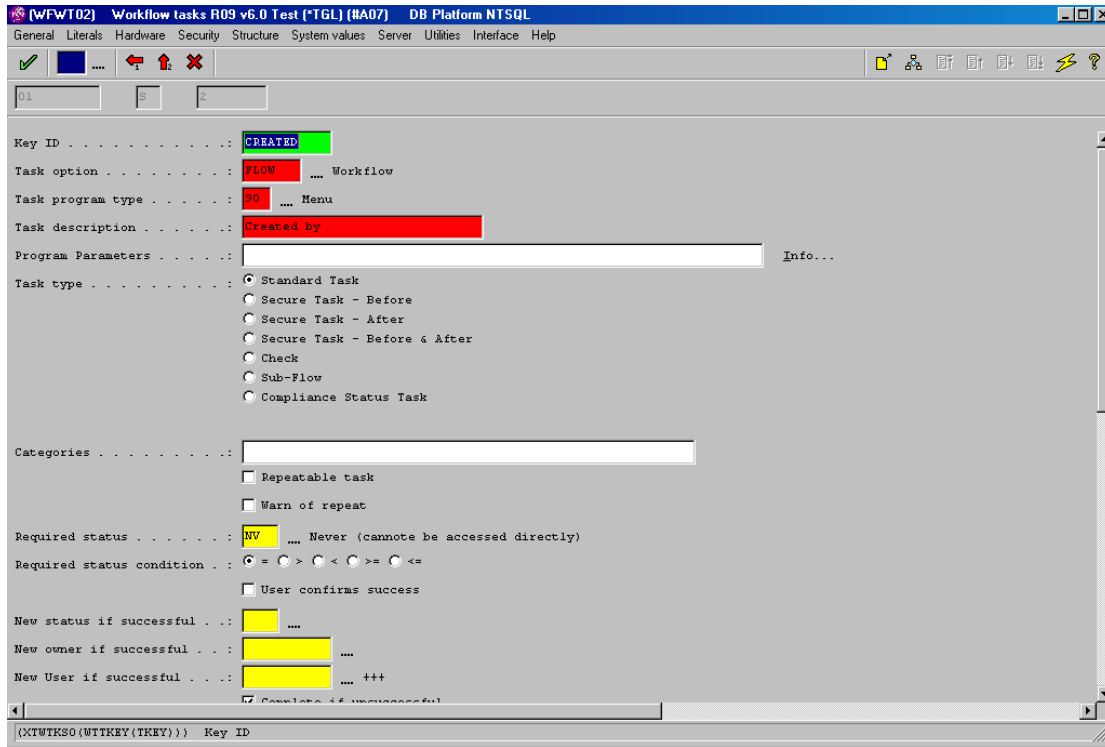
TOPIC 10 Compliance Checking Enhancements

200530938: Ability to automatically run compliance during Dataflow shipment create

When new transactions are created via Dataflow, the "Created by" task is automatically run. This would allow Compliance checks to be automatically run when a new shipment is created via Dataflow; when a compliance check task is configured to run as a Post Requisite task of the "Created by" task.

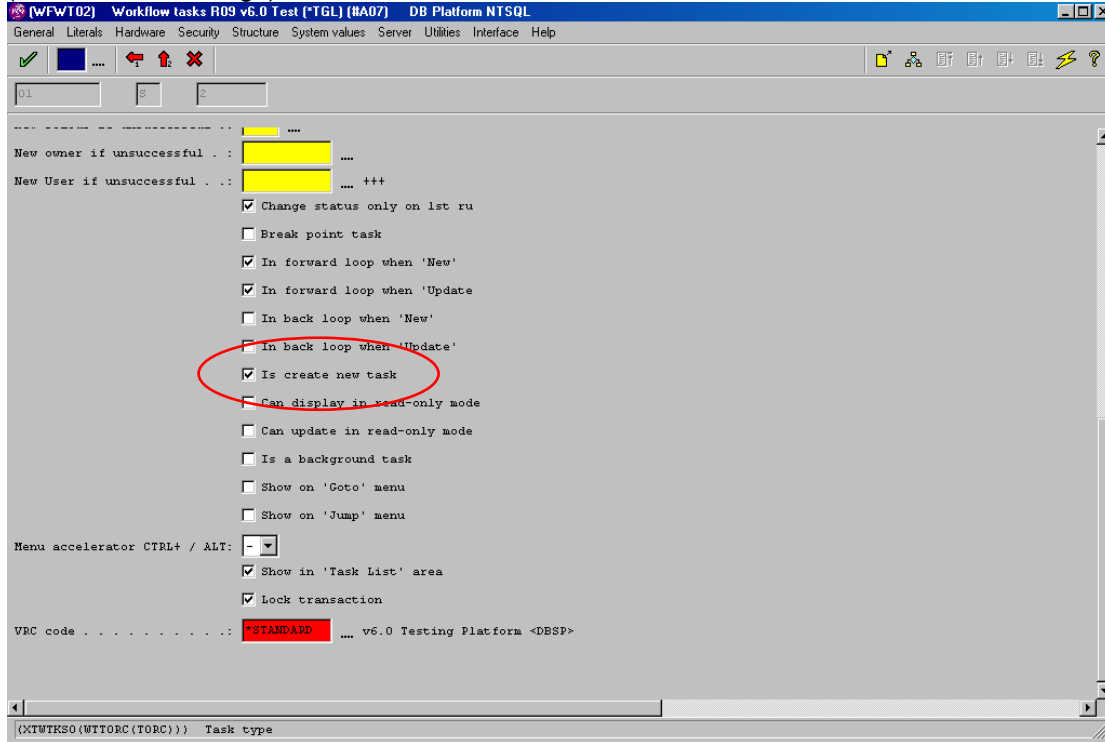
"Create by" task must be flagged as 'Is create new task':

(Next Page)



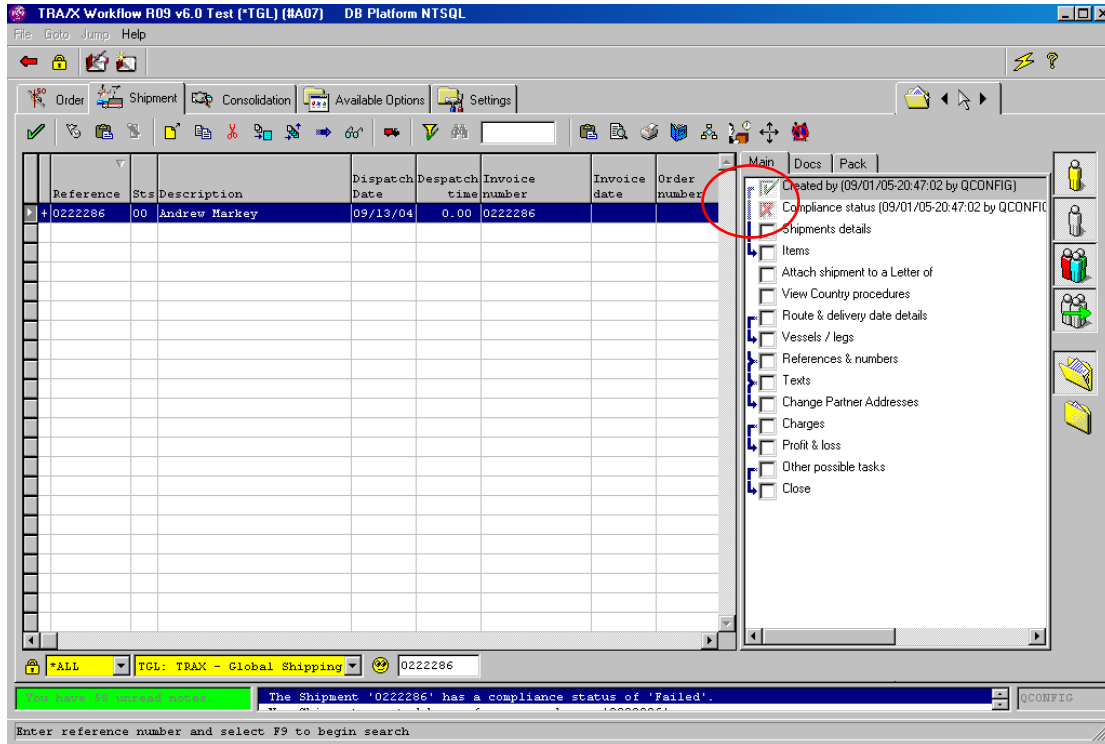
Top of browser window

(Continued Next Page)



Bottom of browser window

After shipment created, the “Created by” task has status check, and “Compliance status” task has status check, indicating compliance post requisite check has run on creation of the shipment:



200531681: Data integrity check for a valid NMFC Code

This check allows for validation of NMFC Codes on the Product Master/Shipment Item. It is used for US and Canadian Domestic Shipping.

PRODUCT_VALID_NMFC

- Checks that each item on an LTL shipment has a valid NM for the product
- Checks that the NMFC is set up on the NM master file. (option NM)

PRODUCT_VALID_NMFC

- Checks if the product being shipped has a valid NMCF Number for LTL Shipments

Example of a fail message:

Item line '10' containing product '8259' has an invalid NMFC code associated with it. NMFC code '' is invalid. Each product associated with an item on a transaction must have a valid NMFC code associated with it. The NMFC code 'XMSITM0.SINMFC' is validated. The code must correspond to a valid NMFC record. The NMFC code field for an item can be updated from the 'Transport information' screen (Option: 'SHS106'). Use option 'NM' to maintain master NMFC information. This has caused the compliance check to fail.

Checking that Data Integrity is set up as a System Parameter

Type option Y2 in TRAXi3, double click on the 'COMPLIANCE' Category and check that the key DATA-INTEGRITY CHECKS is present:

*Key	User	Client	VRC code	Value
* ACTION ON DPL SUBSET			*STANDARD	Fail
* BKPROCESS - PASS STATUSES			*STANDARD	PA,PM
* BKPROCESS - RECHECK INTERVAL			*STANDARD	10
* BKPROCESS - WORKFLOW GROUP			*STANDARD	CKCOMP
* COMPLIANCE AUDIT FILE DIR			*STANDARD	C:\Trax\output\
* DATA-INTEGRITY CHECKS	NREDMOND		*STANDARD	DATA-INTEG
DATA-INTEGRITY CHECKS	QCONFIG		*STANDARD	DATA-INTEG
DPL ADDITIONAL PARTIES	DDRAGUT		*STANDARD	plugin_DPL.p

If it is not there, you will need to create it. Click new and manually add the following:

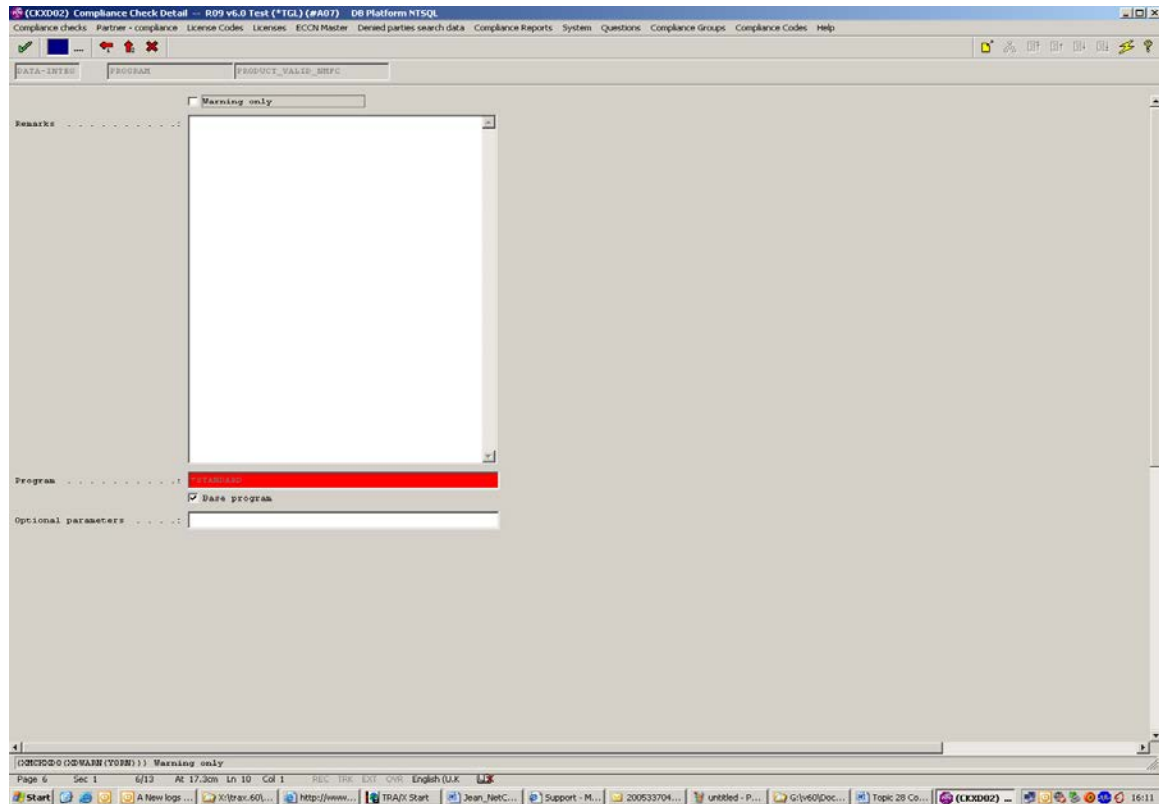
Key	User	Client	VRC code	Value	In use
DATA-INTEGRITY CHECKS			*STANDARD	DATA-INTEG	+++

Setting up DATA-INTEG Checks

From the Compliance Check Master (Fastpath: CK), select DATA-INTEG option by double clicking. The DATA-INTEG screen will appear and the user must select the “Create” option which activates the DATA-INTEG Create screen below:

The method defaults as “Program” and the user selects the appropriate Element (PRODUCT_VALID_NMFC from the dropdown menu). The following screen appears where the

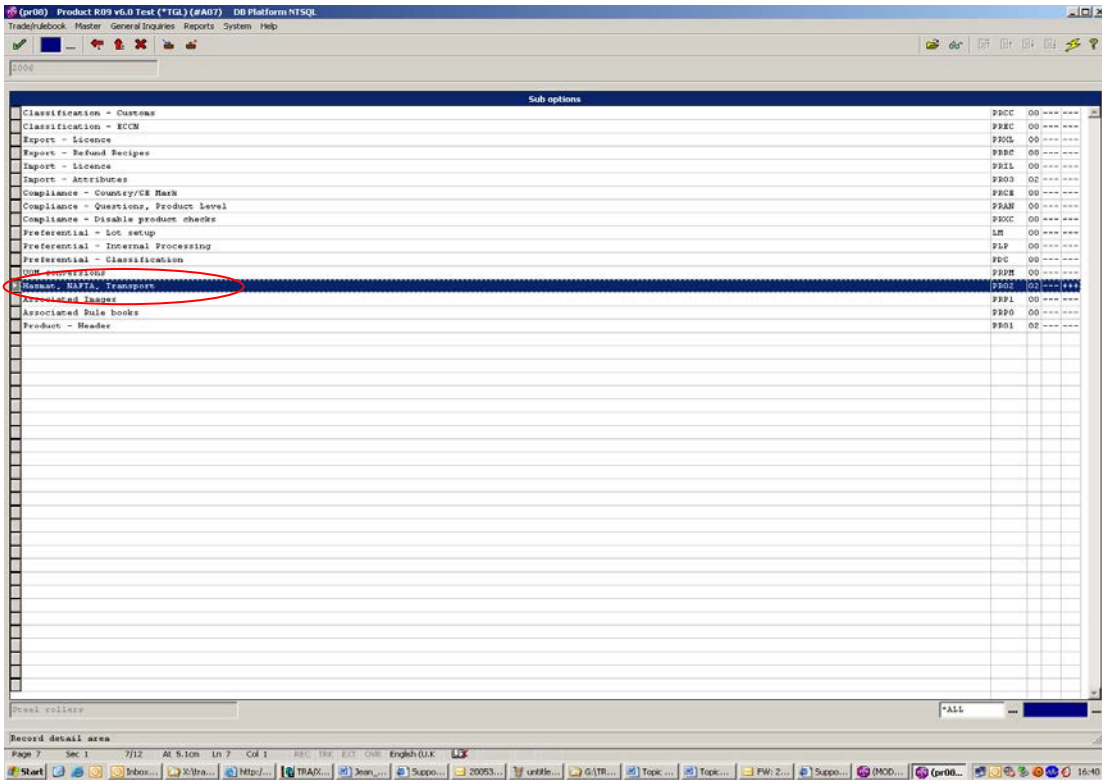
user can enter if the check is a Fail or Warning and also an additional remark which will appear within the compliance check results screen if the Integrity Check fails:



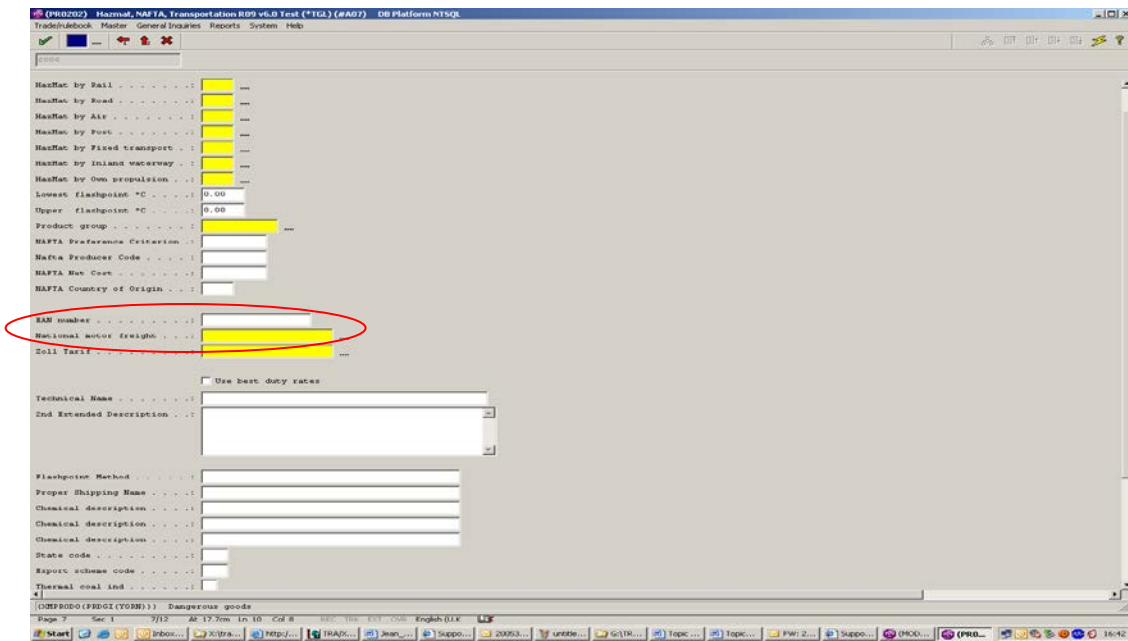
How to apply a NMFC Number to a Product

- Make sure that your NMFC Number has been created, (Fastpath NM)
- You will need to go into the Product (Fastpath PR) that you wish to add the NMFC code to. Click on the Product and click sub options. The following screen will appear. Click Hazmat, NAFTA, Transport:

(Continued Next Page)



- 1) This will give you the following screen. The record 'National Material Freight' links to the NMCF Table (Fastpath NM). This is where you will add the valid NMFC entry that you created earlier on:



200530442: Data integrity check for Cost per unit weight

This check ensures that the estimated cost per unit weight on a shipment is within a certain range.

COST_PER_UNIT_METRIC

This can be set-up in the data-integrity checks which is a sub-option of the compliance checks (CK).

There are 2 system parameters which are used to store the Min cost / weight and the Max cost / weight. They are:

CATEGORY: COMPLIANCE
KEY: MAX COST/WEIGHT UNIT

CATEGORY: COMPLIANCE
KEY: MAX COST/WEIGHT UNIT

The cost per unit weight is the total of all expenses on the shipment divided by the gross weight. If this value is outside the range defined by these values this data-integrity check will fail on the shipment.

200530446: Data integrity check for ETA date versus Promise date

This check ensures that the expected date of arrival on a shipment is less than or on the same date as the promise date.

ETA_VS_PROMISE_DATE

This can be set-up in the data-integrity checks which is a sub-option of the compliance check (CK). If the shipment has a promise date, and the ETA data is greater than the promise date, then the compliance check on the transaction will fail/warn.

200530459: Allow check tasks or compliance check tasks to be moved to other statuses and groups

There have been 2 new workflow task parameters added to the existing list.

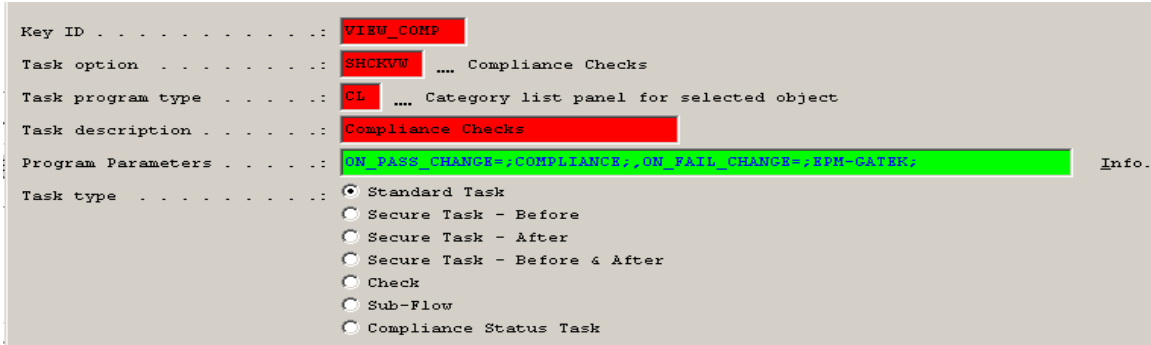
ON_PASS_CHANGE, ON_PASS_CHANGE

The new parameters are ON_PASS_CHANGE and ON_PASS_CHANGE. Both of them consist of 3 possible values status, owner group, user separated by a semicolon.

The purpose of these parameters is to change the status and/or owner, and/or user of a transaction based on the result of a check status. The ON_PASS_CHANGE will indicate what should be changed on the transaction if the check passes, and the ON_FAIL_CHANGE will indicate what should change on the transaction if the check fails.

These parameters can be set-up in WF in the Program Parameters field:

(Next Page)



200532148: Display applicable licenses (XL)

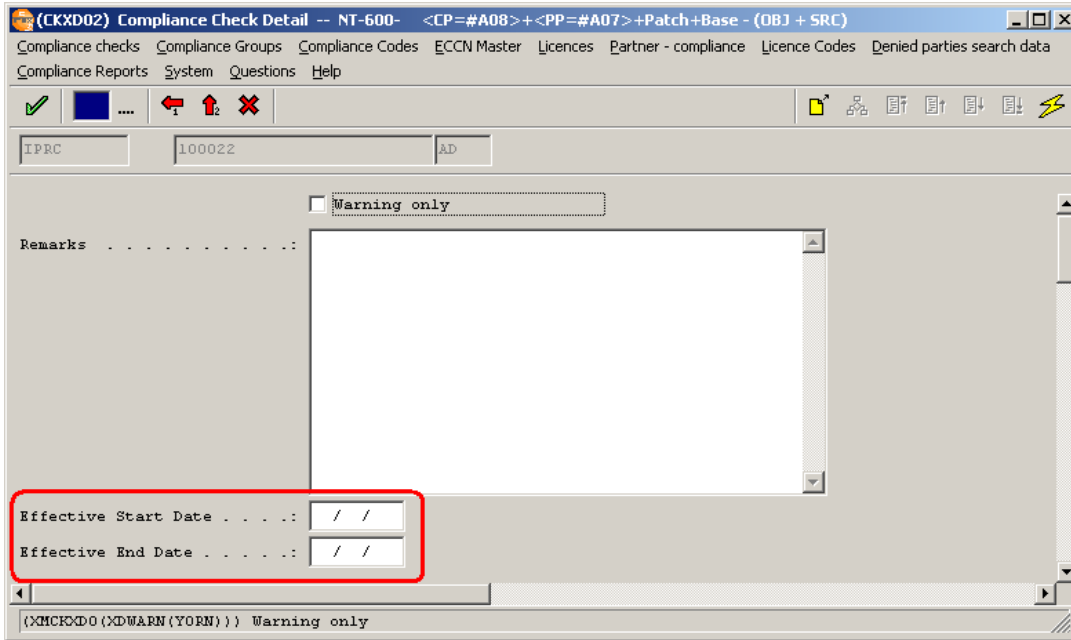
The XL selection screen has been changed to display only the applicable licences for current context (shipment, item, export group). In addition to filtering by consignee(s) and product, it has been extended to use all parameters checked for compatibility in the ECLI compliance check:

- * SIXL Export Group should match XL Export Group
- * Shipment Despatch date must between XL Licence start date and end date
- * Shipment Customer should match XL Licence purchaser
- * Shipment Intermediate Consignee should match XL Licence Intermediate Consignee
- * Shipment Ultimate Consignee should match XL Licence Ultimate Consignee
- * Item Product should match Licence Line Product
- * Item ECCN should match Licence Line ECCN

200531490: Allow for product inclusion/exclusion checks to be effective in a specific date range

The CKXD02 maintenance screen has been changed for PRCT, IRPC, RPRC and IRPR checks to allow for a product entry to be valid in a specified date range. If the dates are left blank, the entry will always be considered by the compliance engine, regardless of the shipment despatch date. If a date range is being specified, the despatch date of the shipment has to be in this date range for the entry to be considered by the compliance checking engine.

(Next Page)



200531214: License exception was not available (SIXL screen)

When typing a code of a valid licence exception (e.g. LVS) in the licence field in SIXL screen and tabbing out of the field, the logic wasn't defaulting to LVS-[shipment despatch year], as expected.

200531213: Default value of "Tolerance Ratio" (XARATIO)

Manually created "Licences - Allowed product" (XLPR) records were defaulting XARATIO to value 0, creating problems with accounting used licence quantities or values. The correct default value should be 1.

200531666: E-mail notification for Compliance Checks (CK) by client

A new System Parameter can be set-up for e-mail notification for Compliance checks (CK option):

"ECO - <COMPLIANCE CHECK>"
CATEGORY: COMPLIANCE
KEY: ECO - <COMPLIANCE CHECK>

If the "ECO - <COMPLIANCE CHECK>" system value is defined, these are the users notified in case this compliance check fails.

If the system value "ECO - <COMPLIANCE CHECK>" does not exist, or if it exists but none of the users in the system value are valid, the users in "ECO" system value will be notified.

To set the new parameter, type option Y2 in TRAXi3, double click on the 'COMPLIANCE' Category, and add the key ECO - <COMPLIANCE CHECK> for a specific compliance check. (Example: **ECO - DPL** with user names as value.)

200534019: EBC and IEBC additional countries

The compliance engine can be configured to call a plug-in program for EBC and IEBC checks, to return a list of additional countries.

The following system parameters can be used to determine the plug in programs:

CATEGORY: COMPLIANCE
KEY: EBC ADDITIONAL COUNTRIES

CATEGORY: COMPLIANCE
KEY: IEBC ADDITIONAL COUNTRIES

The value of each system parameter should be a name of a plug-in program (e.g. xtxxxebc.p).

The compliance engine will lookup up each of the system values, run the plug-in program, pass in the shipment keys, and get a comma-separated country list (e.g. IE,CU,IQ).

The countries returned by the plug-in program will be added to the standard list of countries for each of the checks, without listing the same country twice.

200531213: Ultimate Consignee field

The Ultimate Consignee field has been added to the shipment header compliance data screen.

200531213: Check Intermediate Consignee compatibility only when not blank

“ECCN Export Licences (ECLI)” check will verify the intermediate consignee compatibility between the transaction and licence only when both fields are populated.

Application Fixes

200233934: Partner Roles mismatched parameters

When ‘Partner Roles’ is run when multiple partner records are selected in NR, user was receiving error relating to “mismatched parameters”. This has been corrected.

200233934: Partner Roles tick boxes did not appear

When a new partner was created and ‘Partner Roles’ was run, none of the roles tick boxes appeared on the screen. This has been corrected.

200530143: Diary delete only selected records

In Diary, when you selected multiple diary notes for delete, all entries above the selection were also deleted. (E.g. If you have 4 diary notes with notes 2 & 3 selected for delete, then entries 1, 2, & 3 were deleted.) This has been corrected so only selected notes are deleted, and the list is only refreshed at end of delete. After deletion of selected notes, remaining notes are re-numbered to replace deleted ones.

200435005: Security key number of users

When entering a new security key, error message "Unable to update tt-modules field (142)" was being encountered. This has been corrected.

200333434: Shipment Partner Address Override had extra space

Removed leading spaces from address line field to correct address lines not lining up correctly in documents. Shipment partner address override had an issue where a leading space was automatically added to address lines. This has been corrected.

200436160: Navigation in Users sub option User Groups

When selecting multiple users in US and choosing sub options, then selecting all 3 sub options, user was brought into first 2 sub options for each user one after other using green check mark to progress through users, but user was not brought into the last sub option (User Groups) for last selected user. This has been corrected.

200437336: Secured Task password window title bar lengthened

When a workflow task with a long name e.g. "Route, Booking and Container" was configured as secured before, after, or both, the Security Task Password window title was truncated e.g. "Task Security – Route, Booking and Co", even though there was still room on the title bar for the full task title. This has been corrected and the full title appears in the title bar area.

200437339: Typing error corrected

When a workflow task is configured to have a required status greater than status xx, and the task is run when a shipment is at a status less than xx, user received query message pop-up box warning that current status of shipment is not "greater than xx". Wording on this query message should read "greater than xx". This has been corrected.

200437341: Removed 2nd instance of PCL radio button in DP

In DP Printers menu option, there were 3 radio buttons for "Output file type"; one of these for PDF but the other two were both PCL. There should only have been 2 radio buttons, one for PDF and one for PCL. This has been corrected and there are now only 2 radio buttons available.

200437337: Workflow columns all coloured when moved to another group

Not all columns in FLOW screen were being highlighted in colour when transaction ownership moved to another user group. In FLOW, when a task switched ownership to another user group and new owner group did not have access to shipment status, new owner group user would only see shipment in display-only mode when 'Show items in my group moved to another group' was on. The shipment was then highlighted in dark grey, indicating the status of the shipment is such that you cannot work with this shipment. But not all fields in the FLOW columns were shown in highlighted in colour. Despatch Time, EA Time, ETD Time, and Shipment Type columns were previously not colour-coded. This has been corrected and the whole row is now highlighted and colour-coded.

200437335: Workflow "Break point task" checkbox re-located

In WF Workflow Configuration, the location of the check box for "Break point task" had dropped to the end of the workflow maintenance screen, leaving a gap in the position it previously occupied. This has been corrected and "Break point task" is again in its original location between "Change status only on 1st run" and "In Forward loop when New".

200530898: Partner Roles Order by radio buttons title change

The partner role screen that is accessed from the partner maintenance (NR) can now be sorted either on partner role description (alphabetically) or partner role (partner role code). In #A06, the titles of these "Order By" radio buttons were "Alphabetical" and "Partner Rol", with the titles truncated and missing one letter. This has been corrected and the radio button titles have been re-named as "Partner Role Description" and "Partner Role".

200437525: Workflow spelling errors in INFO pop-up corrected

In WF Workflow Configuration, for tasks that run Compliance checks, the Program Parameters INFO button displayed parameter listing that contained spelling errors e.g. ROLES – the word 'to' was missing after words 'is used...'

- RECHECK - as above
- SETTASK - 'indicates' word was spelled incorrectly
- HIGHWAY_TARGET3 - missing the word 'if' (i.e. '....endpoint to use IF the failover....')

These spelling errors & missing words have been corrected.

200530655: Literal change on Associate Document to all Locales screen

In LO Locales, with radio button "Associate Document to All Locales" selected, screen 'Document – Locale Association' literal on first field was changed from "Document Reference" to "Document Type". This brings it in line with matching field "Similar Document Type", and is a more appropriate literal for the field as field prompt brings user to document types listing.

200530654: Remain in TRAXi3 session when option selected

When in LO Locales list panel, if user hits icon for "Create Locale document association (shift-ctrl-F6)", TRAXi3 session did not stay on this screen with egg-timer (processing) until next screen 'Document - Locale Association' was displayed. Instead, the previous application used by user (e.g. Word, Exchange, etc) was displayed until TRAXi3 session returned to TRAXi3 to display 'Document - Locale Association' screen. This has been corrected.

200530614: No currency conversion if same currency code

Total shipment value was being calculated incorrectly, when shipment header currency and shipment cost currency were the same code, but cost line had differing exchange rate than shipment header. In this scenario, a conversion was done between the FROM currency and the TO currency, when the currencies were the same but the rates were different. This has been corrected so that if the FROM currency and TO currency are the same, the value is returned unchanged - whether the rates differ is irrelevant if the currency code is the same.

200436450: Program crashed when accessing sub-option that did not exist

In Shipment Type sub-option for "Compliance Checks – check partner type" (ZSNR), the sub-option F11 button was enabled on screen ZSNR00 'Trans.-Type – Partner types to check for compliance'. When a user selected a record and hit the sub-option button, the TRAXi3 session would crash with error "XTZSCLP was not found" and application would exit. This has been corrected. The sub-option button on screen ZSNR00 'Trans.-Type – Partner types to check for compliance' is no longer enabled, as this feature with related programs and tables is for future use and not intended to be part of this patch, #A07.

200531021: System values browser update replaced carriage returns with spaces

In System Parameter, if the value contained a Carriage Return CHR(13) or Line Feed CHR(10), and a user updated the value via browse, then the carriage return / line feed was being replaced by a space. This was causing problems in the JDE interface. This has now been corrected, and when a user attempts to update a value containing a Carriage Return or Line Feed via browser, an error message is now issued indicating the system value must be updated via the Update option.

200436159: Shipment documents were not displayed when no Image Register existed

There was an issue with new TRAXi3 database installations where an error message was issued in 'Shipment Documents' task SHSP when there were no records in the Document Image Register (D1). This has now been corrected.

200530751: Binary attachments were embedded into SMTP emails

When using email method SMTP to send email messages from TRAXi3, binary attachments (e.g. PDF files) were being embedded into the email and presented to recipient as rubbish un-encoded text in the body of the email. This was occurring with UNIX HP email servers. This has been corrected, and PDF attachments are now sent correctly as attachments.

200434511: Shipment filter had error if dates were used

When filtering shipments in SH using despatch date (start and end date on the shipment filter selection XTSHFILT), filter was ok, but when the user then left SH and returned to this menu option later, an error message regarding date/time format was encountered. This has been corrected.

200531003: If a shipment partner does not exist on the TRAXI3 address, then the DPL check should fail

If a partner does not exist in the partner master, then the DPL check (for that partner) will fail to indicate that it does not exist, and it will force a correct partner to be added to the shipment or this partner's details to be entered in the address book.

200531373: ECLI check failing when a licence is required for exporting an ECCN to one country

If a product on a shipment is classified with an ECCN number, and this ECCN is controlled for a the Ultimate destination country on the shipment, and a license is added to the EC group (which the Ultimate Destination country is part of), then the country of destination (if part of the EC group) should not fail unless this is appropriate.

200435038: Declare xtrunxml.tt temp-table as NO-UNDO

The declaration of the temp-table has been changed so it can be emptied during an active transaction. Error message before the fix: "Only NO-UNDO temp-tables may be emptied during an active transaction. (6485)".

200434433: Additional parameters for calling xthwsend.p

Two new parameters have been added to procedure calls to xthwsend.p in the programs used for making asynchronous compliance checking calls. Before this fix, error 3320 was occurring: "Mismatched parameter types passed to procedure xthwsend.p. (3230)".

200532319: Large XMLs issue in the compliance engine

Compliance engine programs have changed to allow producing and handling large XMLs (internal memory storage changed from CHAR to MEMPTRS). Before this fix, in some scenarios (e.g. DATA-INTEGRITY check on a transaction with tens of lines), the following error(s) were occurring, either on screen or in the interface logs:

Attempt to exceed maximum size of a CHARACTER variable. (9324)

Attempt to update tt-integrity-results record data exceeding 32000

*** Unable to update tt-integrity-results Field. (142)*

200530463: "&" character failing in XML parse

The background task program has been changed so that when passing an XML message to business logic programs, "&" characters have been encoded so that parsers will not fail.

200533234: Compliance error after manual shipment creation

The error which occurred when running compliance after a shipment was created manually has been fixed by declaring the relevant temp-table in the program as NO-UNDO and recompiling the associated compliance programs.

200531308: Spelling error in ECLI screen

When you add a licence to a shipment item, do a re-check under ECLI check, and check pass in right hand side of screen, the word 'COMPLETELY' in last line is spelled incorrectly; it is spelled COMPLETELY. This has now been fixed.

200533288: Spelling error on compliance results screen

There was a spelling error on the word "country" (shows up as "coutry") on the compliance results screen when using the data-integrity check called 'partner_valid_iso_program'. This has now been fixed.

200531973: Compliance screen – Truncation error on AS400

This occurred when the text being written was larger than 4000 characters during a compliance run. This has been changed so that not more than 4000 characters can be assigned to the field on the AS400.

200530735: Restrict access to relevant fields for Check and Compliance Status Task workflow task types

WFWT02 maintenance screen has been changed to allow access only to the fields relevant for Check and Compliance Status Task workflow task types.

200436740: Licence Exception descriptions text wrapping

When a Licence Exception description exceeds the display limit in the Compliance results for the ECCN Export Licences (ECLI) check, the text will flow on the next line, rather than being cut off.

200531066: Compliance notifications were not sent to all partners with a specific role on a shipment

When multiple Sales Agents were populated on a shipment (SHSREP, SHSREP2, SHSPRE3, SHSREP4), and when compliance notifications were configured to be sent to partner role type 11, only one of these partners was receiving the compliance notification, instead of all four of them, as was expected.

200531010: gethostname.p not working on Sun Solaris

Gethostname.p was changed to retrieve the hostname by calling "uname -n" for Unix platforms, which has wider supported than the old call to "hostname -f".

200531010: smtpmail.p single compiled object for Windows & Unix

Change smtpmail.p code to detect the OS platform in order to run platform specific code at runtime, rather than use pre-processors and separate logic at compile time. This allows for a single compiled object to be deployed, rather than having one compiled object per OS platform.

200530644: Embargoed country detail in TRAXI3

When there is an embargoed country in iTRAXi3, the compliance result only shows a red X and "This country IS an Embargoed Country" at the top left hand-side. It does not have any detail in the body. This has now been changed to display the detail relating to the embargoed country check.

200434770: Allow selling charge of zero to be retained in SHSO option

Shipment charges maintenance (option SHSO): if the user sets the Selling charge to 0, it was not retaining the value as 0 (i.e. was expecting that it should default the value from basic charge to selling charge if the selling charge is zero). The only time it should default the selling charge is when the user leaves the Basic charge field, and the selling charge is already zero).

200437579: Correct message on use of XML option if XML loading error

If there was an error uploading the file through the XML option, (as in the case of an invalid XML file), the message box would indicate to the user that 1 file(s) was uploaded, even if it was not. This is now corrected.

200531136: Remove volume-conversion debug message that was appearing during rating

Occasionally, a debug message for volume-conversion was appearing in the rating process. Moved volume conversion message inside correct logic section so that it does not appear incorrectly during the rating process

200532747: Correct usage of "/" and "\" for directory names in SPS01 option

SPS01 option (pick, pack, ship) option to prevent problems with use of "/" or "\" in the directory name when polling for files for scanner files

200532808: Pick up Routing Guide version of Rate Shopping for Standard Interface

In the system value AUTO RATE SHOPPING for the STD-INTF system value category, call the new shopping screen (based on routing guide) instead of the old shopping screen (based on TH records). This change allows the new routing guide based shopping logic to be called instead of being tied to the old shopping method, which is no longer supported.

200531073: Manual Shipment Create to allow auto-create system value for on-the-fly partner record

If system value for next partner code (when creating partners on-the-fly) does not exist, then default the next partner code to 1, and create the system value:

Category	Key	Default	Information
SHIPMENT	NEXT PARTNER CODE		Reference of the next partner code generated

200530382: Manual Shipment Create standardisation of buttons

Standardised the buttons and keystrokes on the SPS Manual Create screen, which is run as a Create from workflow.

Technical

200433585: Ability to clear Progress and TRAXi3 Temporary files

SYMPTOMS:

When the TRAXi3 sessions are not closed correctly, some Progress temporary files are not deleted. In addition, TRAXi3 is producing some files during the printing process, files which are not subsequently deleted.

RESOLUTION:

From V6.0 #A07, the TRAXi3 login program has been changed to delete the temporary files at logout or login.

Programs changed (changes marked as [200433585](#)) are **xtlogin.w** and new program **xtcleanup.p** introduced.

SYSTEM VALUES

Category: SYSTEM

Key: CLEAR TEMP FILES

Value: 3 pair list

directory|<TEMP-DIR>,<no-of-days>,pattern/pattern..,

Carriage returns are accepted in this system value. <TEMP-DIR> token is the -T parameter from the trax.pf file (Progress temporary folder).

Sample:

<TEMP-DIR>,0,dbi*/lbi*/srt*/bfc*/en*,

<TEMP-DIR>,7,*.pdf/*.prn/*.001/*.tmp

The clean-up procedure will delete all dbi* lbi* srt* bfc* en* from the progress temporary directory regardless of the file date creation, and will delete all files with the extension *.pdf *.prn *.001 *.tmp older than 7 days.

NOTE::

dbi* will match a file name like dbi123456 but will not match a file name like dbi123456.log. A dbi*. * will match a file name like dbi123456.txt but will not match a file like dbi123456

Category: SYSTEM

Key: CLEAR TEMP FILES:TIMING

Value: LOGOUT|LOGIN

When value is LOGOUT, the cleanup procedure is executed when logging out of TRAXi3. When value is LOGIN, the clear procedure will run after user validation at logon time. The default and recommended value is LOGOUT.

Category: SYSTEM

Key: CLEAR TEMP FILES:SPLASH WINDOW

Value: YES|NO

If the system value is YES, it will display a small splash window informing the user to wait while clearing the temporary files.

Category: SYSTEM
Key: CLEAR TEMP FILES:DEBUG
Value: NO|YES

If the system value is YES, it will create a log file in the progress temporary folder with references to the files deleted and the eventual errors during the delete attempt.

MORE INFORMATION: The change can be retrofitted in older TRAXi3 releases.

200530019: ECODE reduced in xs_si001.p

The Ecode issue has been resolved in xs_si001.p by modifying xtd_nref.5ii (see <http://www.precision.ie/ihamt.asp?ID=200436193> for details).

200530017, 200334678: xtckpce.w does not compile

The compilation issue in xtckpce.w has been resolved.

200533225: Mismatched parameter error in compliance engine

The Procedure proc-create-tt-xmscckc0 has had its third-to-last parameter (pi-remarks-xm) changed to be a memory pointer. The call to this procedure has been changed throughout xtckcomp.p to pass a memory pointer and remove the mismatch parameter error.

200533802: Move compliance notification logic

Compliance notification logic was moved out of the compliance engine program (xtckcomp.) to a stand-alone program (xtckntfy.p) to allow for easier development and to avoid future segment overflow.

200530257: Allow specific rulebook to be called by a program

<http://www.precisionsoftware.com/Support/SupportPage.aspx?M=SUPPORT&C=KB&IDKB=KnowledgeBase&ID=200510006>

200530621: Store label dimensions per ZPL macro upload

When loading ZPL macros, store the dimensions of the label on the MA record. Allow those dimensions to be updated if required.

200533113: Base64 encoding to remove trailing spaces

Added a note in xtbody64.p & add a small change in xtbody64.i when decoding to remove trailing spaces from XML produced by external systems (Menlo: Gemini)

200533339: Capture any Progress errors when running sub-options in TRAXi3

Capture the errors fully for when accessing sub-options of another option (i.e. sub-option through the CT panel) in TRAXi3, so that the error can be debugged more quickly.

200435954: Don't show workflow messages for tasks run in background

If a set of workflow tasks is run in batch mode (session:appl-alert-boxes = false), then all default replies to messages as FALSE, so that the logic does not hang in the calling program.

200531996: Correct IPL DPI issue for conversion from ZPL

When converting some macros to IPL for DPI 406, there was an "*** Attempt to expand record beyond the maximum allowed size. (444)" error - now corrected.

200531010: Sun Solaris fix

Corrected the program which retrieves the host name (given the IP Address) so that it works on Sun Solaris.

200530701: SPS Letter screen and SPS Manual Ship Create screen, now create shipment through black-box programs for consistency

These screens are now just front-ends to the engine that creates a shipment in the same way as the processing of black-box XML messages – this ensures that the shipment created in the database is created in a consistent manner and allows extended logic to be available to multiple parts of TRAXi3 at the one time for shipment creation.

200437228: Landscape PDF document

Rotate PDF document when the output page format is 'Landscape'.

200531010: Rotated barcode in labels

Added support for rotated barcode in label macros.

200532005: Prevent the “darkness” setting being set by BarTender

Removed the ~SD10 from the uploaded Zebra labels generated by BarTender - we do not want the "darkness" setting controlled by what is released for TRAXi3.

200532022: Remove Zebra commands set by BarTender

Allowed the removal of ZPL commands to be more dynamic - this now removes the ZPL commands based on a system value. The system value determines what ZPL commands should be removed during the MA upload of the PRN file: (Next Page)

Category	Key	Default	Information
PRINTING	ZEBRA: REMOVE ZPL COMMANDS		Comma-seperated list of commands Example: ^PW,~SD,^LT

200530254: Hide messages during “close shipment” task

If the Close Shipment is run in "batch mode" (sesssion:appl-alert-boxes = true), then don't display the messages to screen. Instead, store them against the shipment through the XMERLG0 records. This is to facilitate closing multiple shipments together as part of the EOD screen.

200432268: Default shipment close task messages to YES

Default the response for "Close shipment" to be YES, such that if this task is run in a “hidden” (non-interactive) mode, then it will not present any messages to the user. It will assume that the answers to those messages should have been YES (to continue). If the messages were error messages, then it will not assume YES.

200534080: User-defined document procedure added back to program

When printing a UDD: in procedure xtd_pstr.p, include file xtd_mrg3.i was commented, but it seems that it must be uncommented because there are calls to the procedure: proc_DataLine defined in xtd_mrg3.i.

200435740: MAPI logic only run if EMAIL method is “MAPI”

Only run the MAPI logic for sending emails of documents if the email method chosen is "MAPI".

200531931: Translation tool to be able to handle array elements/variables

Corrections for translation of widgets where those widgets have extents (arrays).

200330058, 200434469: Email – specify address on Rule Document & Documents

Specify email address on Rule Document & Document, modify rules processing, populate destination id picked up by the printing engine.

200437660,200531020,200531020: CAPDTI module – commodity code recalculation, fix delete export refund line

Added action in the export refund calculation engine (xtshsac2.p) when system value category CAPDTI, key EXPORT NOTIFICATION SYSTEM has a value of CAPDTI. The export refunds will recalculate the commodities if system value category CAPDTI, key RECALCULATE EXPORT REFUNDS:COM has a value of YES.

200532352: Reports, fix transactions scope

A fix has been added in the report template to isolate transaction scope while running reports.

200532352: HTTP post, fix log directory

A hard-coded file stream was open in the c:\temp\out1 directory; http post was failing when the directory was missing.

200534186: Duplicate qty in packing

Workaround fix for a Progress bug, the packing qty was duplicated due to incorrect num-selected rows in a browse.

iTRAX Data Maintenance

200530086: Ability to associate an alternative id to a TRAXi3 user id

This release uses a Precision reserved field (XTUSER0.USPSL03) to hold an alternative code identifier. The user maintenance panel has been modified to include this field for update. The field is labeled "Alternative id".

This information is used by iTRAX to map an NT domain user id to a TRAXi3 id where the domain user id is greater than 10 characters or simply different from the TRAXi3 user id.

200436249: MD5 Password Encoding applied to change password option

The user password is encoded in the TRAXi3 database in two formats – a Progress proprietary encode format and a MD5 format. This MD5 encoding did not occur when the change password option (CHGPWD) in TRAX was used. This modification corrects this.

iTRAX Print Functionality

200531910: The “Black Box” Document Print process can now print as well as just generate PDF documents

iTRAX can now send cTRAX a message to print a document. Previously, it could only issue a message to generate a PDF document.

200530047: The “Black Box” Document Print process was changed so that fix 200531910 remained backward compatible with earlier versions of iTRAX

The cTRAX program called by iTRAX now expects to be told if it is to print or produce a PDF document. If this is not specified, then the program will default to PDF generation by default. This means earlier versions of iTRAX will work as before with the new version of the cTRAX program.

200530176: The “Black Box” Document Print process was changed so that if it is unable to produce a PDF document it generates an error response to iTRAX

Previously, the document program called by iTRAX would not trap basic errors. This has been corrected so that an error is now returned when a PDF document cannot be created. This error is then displayed in iTRAX.

200436512/200532431: The “Black Box” Document Print process can now print a document without using document distribution lists

iTRAX can now send cTRAX a message to print a document to a specific printer even if it is associated with a document distribution list.

The XML sent to cTRAX from iTRAX has changed. The element node “TYPE_CODE” has been replaced with “DOCUMENT_TYPE”.

200533297: The “Black Box” Document Print process can now print a document associated with a Despatch

iTRAX can now send cTRAX a message to print a document for a shipment despatch. Previously such requests were not processed.

Highway Listener

200530264: User name and password used by Listener at startup has changed

It is now possible to configure the listener login program to use the user name and password specified on login to connect to a non-Progress database. Previously, it was assumed that this information was to be used only to validate TRAXi3 user credentials in the user table (XTUSER0), and that the database credentials were hard-coded in the initialisation file (traxcon.ini).

Can now specify in traxcon.ini if the user name and password entered on the login screen are to be used to connect to the database or not. If “LoginAsDbUser=YES” is specified, then the connection parameters -U and -P are generated dynamically by the login program using the user id and password entered. If “LoginAsDbUser=NO”, then it is specified that the connection parameters -U and -P are assumed to be static and already defined in the traxcon.ini file using one of the “GeneralConnect” parameters.

200530965: Fix to 200530264 above

If “LoginAsDbUser=NO”, then the user id and password are validated against the users in the TRAXi3 table XTUSER0.

200530561: The Highway listener was made more robust

If the listener processes are started and the connection to the TRAXi3 database is unavailable, then continue to try and connect until a connection established.

The log file generated by the listener is now archived based on date. That way, if a listener fails and is restarted, the log file with the failure information will be archived before a new log file is created. The listener components used to communicate with Highway were modified to correct a memory leak. (HighwayConnector.ocx and HighwayListener.dll)

NOTE: These files are windows system32 files and need to be registered using “regsvr32.exe”.

200530983: The Highway listener now has a message area

The listener process GUI panel was modified to include a message area for errors. This allows errors to be displayed in the panel rather than as an alert box. Alert boxes cause a problem if they occur when the listener is being run as a NT service.

200532384: The Highway listener can now better recover from a crash

The listener can be configured to save a message before passing it on to the business logic for processing. If the business logic crashes and the listener is restarted, then the saved message is re-issued to the business logic.

If the listener fails to get a valid message from the business logic, (i.e. a blank result), the message will be re-issued.

New listener parameters have been introduced to configure this:

```
RETRY=YES/NO
RECOVERY=YES/NO
RETRY_DIRECTORY
RECOVERY_DIRECTORY
```

200532674: The Highway listener will now acknowledge a message before processing it when in recovery mode

When the listener is in recovery mode it will now acknowledge receipt of a JMS message prior to processing it. This is necessary because the listener now handles recovery of the message if the processing of the message causes the listener to crash. Previously, the listener would only acknowledge receipt of the message when the processing was completed. This meant if a problem arose Highway would resend unacknowledged messages. This approach is unsatisfactory as Highway will only resend unacknowledged messages when JBoss is restarted.

Recovery mode can currently only be used in an asynchronous process flow.

200531643: The “HTTP” listener can now support synchronous messaging

The HTTP listener has been modified so that it can be used in a similar way to the JMS listener. This means the HTTP listener is now aware of how to send a reply message back to Highway and set the reply message with the correct correlation id property value.

The HTTP listener can now supports the same program parameters supported by the JMS listener.

200531992: The “HTTP” listener can now be run as an option

The HTTP listener can now be run as a TRAXi3 option just like its standard (JMS direct) equivalent. This allows one to use the HTTP listener the same way as the standard listener. Previously, the HTTP listener could only be run as a TRAXi3 background process. This is still possible.

200533796: The “JMS” listener can now send an acknowledgment message

The listener has been modified to allow it send Highway an acknowledgment message prior to processing the message. An acknowledgment plug-in program can be specified, which is then run by the listener to generate an acknowledgment message. This message is sent to Highway and ultimately back to the system that sent in the message.

Acknowledgement messages are only supported with asynchronous message flow.

200534254: Fixed auto shutdown issue with “JMS” listener

A small fix was made to how a listener behaves when listening is stopped, AUTO_START is not set, and SHUTDOWN_TIME is specified. Previously, this would cause the listener to exit altogether. The listener now stops but does not quit.

200531939: Listener can now use a new DLL to communicate with a JMS queue

The listener can now use “xthwcom.dll” to connect to a JMS queue. This functionality is intended for future use and is currently disabled by default.

Compliance Tools (Internal use)

200531075: New Shortcut key (F2)

A new shortcut key (F2) has been assigned to the 'Save Country Mappings' button on the Country Mappings tab in option DPLGO.

200334413: New menu option (CKUPL)

A new option (CKUPL) is now available, which allows all the various Compliance Content upload tools to be run from one screen. The different tools (Resources, DPL Tools & Other Tools) are presented as different tabs. This program uses the information in system values in category CONTENT, with keys named: DPL TOOL #xx, WEB RESOURCE #xx and OTHER TOOL #xx.

200530406: New delimiter tool

A new Excel format has been defined for all DPL lists that are manually maintained by the Content team (i.e. CBW). A new delimited tool has been developed that will parse this new excel format and produce two new fields - “effective from” and “effective until” date fields in the result file (SDN). The DPLGO upload tool has been modified to be able to upload these two new files.

200436991: Truncate DPL import data as per database field lengths

The DPL content upload program was changed to truncate import data according to the database field lengths: XMXPTY0.XPNAME at 169 characters, XMXPTY0.XPTITL at 180 characters, XMXPTY0.XPRMK1 and XMXPTY0.XPRMK2 at 300 characters.

200533423: New DPL list for Iran – OFACIR

The OFACIR list has been added to the DPLGO Update tab ('Import file from' list) and to the XML (export) tab.

200531484: DPLGO tool tab order:

The tab order in the DPLGO tool has been modified so the order appears as follows: Update, Address Mappings, Country Mappings, XML, Update Settings.

200532757: Allowed Products screen – new validation:

The following changes have been made to the (XLPR02) Licences – Allowed Products screen:

- When the Licensed Value (XALVAL) is populated, the Currency (XACURR) field must be populated
- When the Licensed Quantity (XALQTY) field is populated, the Quantity UOM type (XAQTYP) and Quantity UOM (XAQUOM) fields must be populated

Suggestions for Improved Documentation

Please report any suggestions that you feel would improve Precision's documentation and return via Email: education@precisionsoftware.com