

Industry-specific

QAD SOLUTIONS

Manufacturing Applications

**Installation Guide
Advanced Inventory
Management (AIM)**



78-0628C
MFG/PRO Versions eB, eB2, eB2.1
AIM Versions 2.3 and 2.3 SSD, Progress Database
November 2005

This document contains proprietary information that is protected by copyright and other intellectual property laws. No part of this document may be reproduced, translated, or modified without the prior written consent of QAD Inc. The information contained in this document is subject to change without notice.

QAD Inc. provides this material as is and makes no warranty of any kind, expressed or implied, including, but not limited to, the implied warranties of merchantability and fitness for a particular purpose. QAD Inc. shall not be liable for errors contained herein or for incidental or consequential damages (including lost profits) in connection with the furnishing, performance, or use of this material whether based on warranty, contract, or other legal theory.

QAD and MFG/PRO are registered trademarks of QAD Inc. The QAD logo is a trademark of QAD Inc.

Designations used by other companies to distinguish their products are often claimed as trademarks. In this document, the product names appear in initial capital or all capital letters. Contact the appropriate companies for more information regarding trademarks and registration.

Copyright ©2005 by QAD Inc.

QAD Inc.

6450 Via Real

Carpinteria, California 93013

Phone (805) 684-6614

Fax (805) 684-1890

<http://www.qad.com>

Contents

About This Guide	1
About AIM	2
Other AIM Documentation	2
QAD Web Site	2
Conventions	3
Chapter 1 Installing AIM	5
Overview	6
Installation Requirements	6
AIM Deployment	6
Languages	8
Radio Frequency Terminal Implementation	8
Installation Steps	8
Install the AIM Media	9
Install AIM Files	9
Create the AIM Empty Database	11
Load Database Schema	12
Create Empty Databases for Additional Languages	13
Build the AIM Production Database	13
Load AIM Data	14
Compiling AIM: UNIX	16
Create UNIX Compile Script	16
Fix qad.wrk Errors	17
Compile Under UNIX	17

Compiling AIM: Windows	19
Modify Windows .ini and .pf Files	20
Compile Under Windows	21
Creating a Launch Script	23
Updating Help	24
Load Online Help	25
Access Revised Character Help Information	26
Starting AIM	26

Chapter 2 Upgrading AIM 29

Overview	30
Updating the MFG/PRO Service Pack Level	30
Upgrading the AIM Version	31
Prior to Starting	31
Install New AIM Media	31
Update Existing aimempty	31
Compile Upgraded AIM Version	32
Update the AIM Production Database	34
Updating Help	36
Load Online Help	36
Access Revised Character Help Information	37

Index 39

The background of the page is a grayscale image of several interlocking gears. The gears are of different sizes and are arranged in a way that they appear to be meshing together. The lighting is soft, creating a sense of depth and texture. The overall tone is professional and technical.

About This Guide

About AIM 2

Other AIM Documentation 2

QAD Web Site 2

Conventions 3

About AIM

Advanced Inventory Management (AIM) is a module designed to work with QAD's MFG/PRO. AIM provides powerful but flexible stock control facilities. AIM enables you to control the receipt, stocking, storage, picking, and shipping of inventory using warehouses that exist within the MFG/PRO environment. AIM provides a suite of programs and parameters that let you set up the way that your inventory management processes operate, and a range of control, inquiry and reporting functions that let you run the system efficiently on a day-to-day basis.

Currently AIM is not supported in Oracle environments.

Other AIM Documentation

This guide provides detailed information on how to install the AIM system.

For details on how to implement the AIM system and how to use AIM in day-to-day operations, see *User Guide: Advanced Inventory Management*. For additional information on enhanced functionality in the AIM product, see the *Advanced Inventory Management Release Notes*.

These instructions are intended for the system administrator who is installing the database and is familiar with the UNIX operating system, the Microsoft Windows operating system, Progress software, and networking.

QAD Web Site

The QAD Web site provides a wide variety of information about the company and its products. You can access the Web site at:

<http://www.qad.com>

For users with a QAD Web account, product documentation is available for viewing or downloading at:

<http://support.qad.com/>

You can register for a QAD Web account by accessing the Web site and clicking the Accounts link at the top of the screen. Your customer ID number is required. Access to certain areas is dependent on the type of agreement you have with QAD.

Most user documentation is available in two formats:

- Portable document format (PDF). PDF files can be downloaded from the QAD Web site to your computer. You can view them with the free Adobe Acrobat Reader. A link for downloading this program is also available on the QAD Web site.
- HTML. You can view user documentation through your Web browser. The documents include search tools for easily locating topics of interest.

Features also include an online solution database to help users answer questions about setting up and using the product. Additionally, the QAD Web site has information about training classes and other services that can help you learn about AIM.

Important Before you start the installation, check the Web site to make sure you have the most recent version of this document.

Conventions

This document supports the installation of AIM on both UNIX and Windows platforms. The instructions use character screens and Windows file and path conventions. In the few places where the two sets of instructions diverge, the headings and text explicitly declare which operating system is the focus of the current set of instructions.

4 Installation Guide — Advanced Inventory Management

This document uses the text or typographic conventions listed in the following table.

If you see:	It means:
monospaced text	A command or file name.
<i>italicized</i> <i>monospaced text</i>	A variable name for a value you enter as part of an operating system command; for example, <i>YourCDROMDir</i> .
indented command line	A long command that you enter as one line, although it appears in the text as two lines.
Note	Alerts the reader to exceptions or special conditions.
Important	Alerts the reader to critical information.
Warning	Used in situations where you can overwrite or corrupt data, unless you follow the instructions.

Installing AIM

This chapter provides information on installing AIM.

<i>Overview</i>	6
<i>Installation Steps</i>	8
<i>Compiling AIM: UNIX</i>	16
<i>Compiling AIM: Windows</i>	19
<i>Creating a Launch Script</i>	23
<i>Updating Help</i>	24
<i>Starting AIM</i>	26

Overview

This chapter provides instructions for installing the QAD Advanced Inventory Management (AIM) product in your MFG/PRO environments.

The AIM installation requires the following steps:

- Install AIM media to your server.
- Build the AIM database.
- Load translated labels.
- Load default data to AIM database.
- Load data to MFG/PRO database.
- Modify startup files.
- Compile AIM application with MFG/PRO.
- Load character help in MFG/PRO.

QAD recommends you complete the AIM installation in a test environment first.

If you are performing an upgrade of an existing AIM system, see “Upgrading AIM” on page 29.

Installation Requirements

AIM 2.3 can be installed with the following MFG/PRO versions on a Progress database; Oracle is not currently supported:

- MFG/PRO eB, through Service Pack 5
- MFG/PRO eB2, through Service Pack 5; Service Packs 7 through 9

AIM 2.3 SSD (Shared Services Domain) can be installed with:

- MFG/PRO eB2.1, Service Packs 2 and 3

AIM Deployment

The recommended deployment of AIM on your server is to place the AIM directory structure (*AIMInstallDir*) parallel to the directory where you installed MFG/PRO (*MFGPROInstallDir*). On eB2 on Windows, for example, if the *MFGPROInstallDir* is `/dr01/mfgpro/eb2sp5`, the *AIMInstallDir* would be `/dr01/mfgpro/aim23c`.

You can install AIM in a different directory structure or on a different drive. If you do so, make sure your PROPATH is updated to run AIM programs prior to baseline MFG/PRO code.

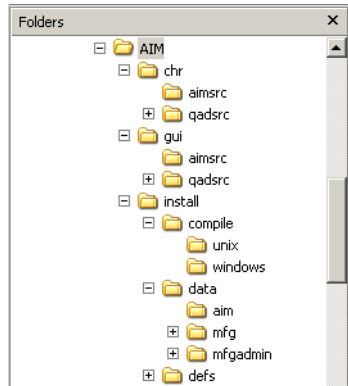


Fig. 1.1
CD Directories

The CD source directories are listed in Table 1.1.

Directory	Description
chr/aimsrc	AIM character source code.
chr/qadsrc/...	Source code for modified MFG/PRO programs required for the AIM application, sorted in subdirectories by MFG/PRO version and service pack level. (IR is initial release.) Each service-pack directory contains a list of MFG/PRO (qad.wrk) and AIM (aim.wrk) programs to compile.
gui/aimsrc	AIM GUI source code.
gui/qadsrc/...	Source code for modified MFG/PRO programs required for the AIM application, sorted in subdirectories by MFG/PRO version and service pack level. (IR is initial release.)
install/compile	Contains a UNIX and Windows directory with operating system-specific versions of the AIM compile utility whcomp.p and its subprogram whcompl.p.
install/data/...	Data (.d) files. Those under /mfg and /mfgadmin contain language-specific data directories. The character-client field help file is located under /mfg/us. Data for AIM-specific tables is in the /aim directory.
install/defs	Schema or data definition files (.df) for US English. Additional schema definition files containing translated labels are located beneath this directory in language directories.

Table 1.1
AIM CD Directory Structure

If compiled source code is required, the structure of the compile destination directory is copied into a compiled source code directory named `/xcode`.

Languages

AIM supports the English (US), Dutch (DU), French (FR), German (GE), Castilian Spanish (CS), Portuguese (PO), Italian (IT), and Polish (PL) languages. To create a US English-only install, no special steps are required. To create a single-language install that is not US English, you must load a set of translated schema definitions and set your compile destination directory to reflect the language code.

To support multiple languages, you create an empty AIM database for each language (`aimUSEmpty`, `aimFREmpty`, and so on) and load the appropriate language-specific schema definition (`aimusV9.df`, `aimfrV9.df`, and so on) into each. You then compile each language separately, setting the compile destination directory to reflect the language code.

Later, after you create a production AIM database from an empty database, you load the language-specific AIM data files for each language you are implementing into the MFG/PRO production and admin databases.

Radio Frequency Terminal Implementation

Because AIM uses a radio frequency terminal (RF) and RF implementation requires a character client, if your MFG/PRO and AIM clients are GUI-only under Windows, you must also install MFG/PRO and AIM character clients to support an RF implementation. The database server can be either UNIX or Windows.

Installation Steps

AIM ships on a single CD that contains all AIM programs, modified MFG/PRO programs by version, and all available languages.

Install the AIM Media

In this set of steps, you mount the AIM media and copy the required files to the server.

▶ For Windows servers, insert the CD and go to “Install AIM Files” on page 9.

Mount the CD-ROM (UNIX Only)

- 1 Log on as `mfg`.
- 2 Mount the CD-ROM. Example commands are listed in Table 1.2.

Hardware	Mount Command
Sun	<code>volcheck cdrom</code>
HP	<code>/etc/mount -F cdfs /dev/dsk/YourCDDevice /cdrom</code>
Digital	<code>mount -r -o noversion -t cdfs /dev/YourCDDevice /cdrom</code>
AIX	<code>smitty mountfs</code> Then select file system, directory, and file system type (<code>cdrfs</code>).
Linux	<code>mount /dev/hdb /mnt/cdrom</code> Where <code>/hdb</code> could be <code>hdc</code> or <code>hdd</code> among other possibilities.
All others	Refer to your operating system documentation or vendor for requirements to mount a CD-ROM. You may be able to type <code>man mount</code> to determine the correct command.

Table 1.2
UNIX CD Drive
Mount Commands

Install AIM Files

Complete this section to install the AIM files on your server. The instructions provide first the UNIX method, then the Windows method if necessary. In most cases, these steps can be completed in the Windows Explorer.

- 1 In UNIX, log on as user `mfg` under the group `qad`. For Windows, log in as a user with administrator privileges.
- 2 Create an AIM directory parallel to `MFGPROInstallDir`; for example, if `MFGPROInstallDir` is `/dr01/mfgpro/eb2sp5`, then install AIM to `/dr01/mfgpro/aim23c`. This is the `AIMInstallDir`.

3 Create the following directories within the *AIMInstallDir*:

- *AIMInstallDir/triggers*
- *AIMInstallDir/us*
- *AIMInstallDir/us/src*
- *AIMInstallDir/us/spX*

The */spX* directory refers to your MFG/PRO service-pack level. For eB2 service pack 5, this directory would be */sp5*.

4 Copy the contents of */install/data* and */install/defs* from the CD to the *AIMInstallDir*. You should end up with:

- *AIMInstallDir/data*
- *AIMInstallDir/defs*

Note If you choose, you can limit the number of files you copy. Both the */data* and */defs* directories contain directories for each supported language. You can copy only the directories for the languages you are implementing.

5 Copy *whcomp.p* and *whcomp1.p* from */install/compile/os type*, where *os type* is either */unix* or */windows*, to *AIMInstallDir/us*.

6 Copy the contents of the */chr/aimsrc* directory from the CD to *AIMInstallDir/us/src*.

7 Copy the specific directory for your MFG/PRO version and service pack from the */chr/qadsrc* directory from the CD to *AIMInstallDir/us/spX*. For example, if you are running MFG/PRO eB2 Service Pack 5, you would end up with:

AIMInstallDir/us/sp5

8 To implement GUI clients for AIM, repeat steps 2 through 7, creating a complete AIM GUI installation parallel to *MFGPROInstallDir*. The only difference is the CD-ROM directories for steps 6 and 7 are */gui* instead of */chr*.

Important If you are installing Windows clients and want to run against UNIX databases, you must also have complete UNIX character interface AIM and MFG/PRO installations to support the database.

Create the AIM Empty Database

The `aimempty` database is used to compile additional languages and to create the production AIM database. If you are implementing multiple languages, you must create an empty AIM database for each language in order to compile the code for that language. If this is the case, name the empty databases accordingly: `aimU$empty`, `aimF$empty`, and so on.

The following steps use MFG/UTIL. This utility is installed with your MFG/PRO application.

- 1 Launch MFG/UTIL from your `MFGPROInstallDir`.
For UNIX, run the command `./mfgutil`.
For Windows, select MFG/UTIL (Character) from your MFG/PRO database server icon in the Start menu.
- 2 Select Database|Create Database.

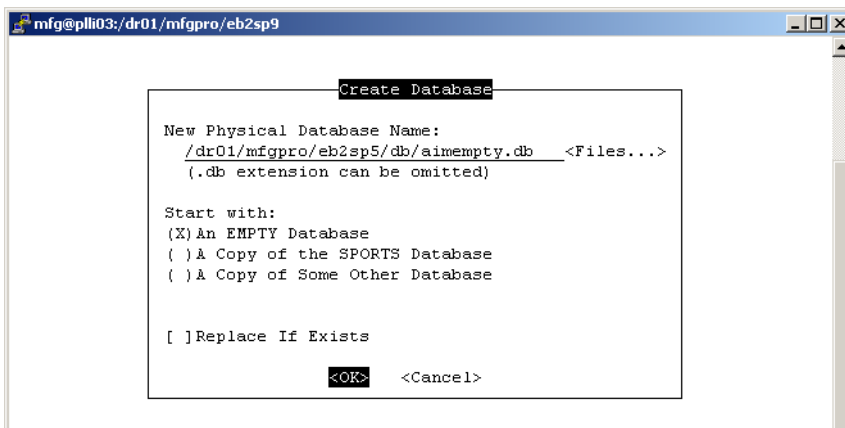


Fig. 1.2
Create the AIM
Empty Database

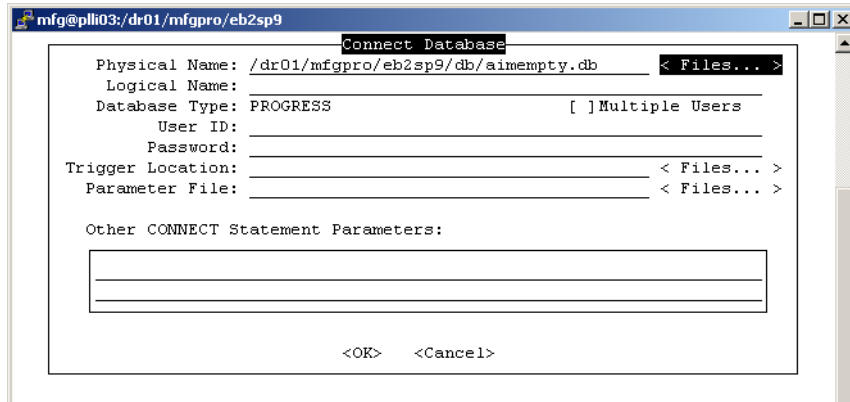
- 3 Enter `aimempty` and the full path to the `/db` directory as the new physical database name, start with an empty database, and choose OK. The new database is created.

Load Database Schema

The database schema files (.df) loaded in these steps contain the table, field, and index definitions for your AIM database.

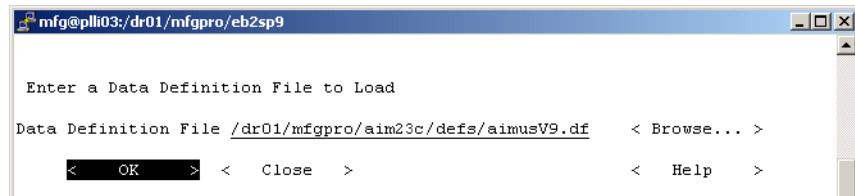
- 1 In MFG/UTIL, select Database|Load Database Schema (.df) File.
- 2 Connect to the `aimempty.db` and choose OK.

Fig. 1.3
Connect to the AIM Database



- 3 The Data Definition File to Load screen displays. Enter the correct data definition file and path:
 - For US English, choose `AIMInstallDir/defs/aimusv9.df`.
 - For a language other than US English, choose `AIMInstallDir/defs/xx/aimxxv9.df` where `xx` is the language code.

Fig. 1.4
Load the AIM Data Definitions



- 4 A load window displays. When the load is complete, choose Close to exit the load. You return to the data definition file load screen. Choose Close to exit.

Create Empty Databases for Additional Languages

To create a US English-only install, skip this section. To create a single-language and non-US English language install, you can also skip this section.

- 1 Repeat the steps in “Create the AIM Empty Database” on page 11 for another empty database; for example, `aimFRempty.db`.
- 2 Repeat the steps in “Load Database Schema” on page 12 for the new empty database.

Repeat these three steps as often as needed to supply yourself with a new empty database for each language you are implementing.

Build the AIM Production Database

These steps create a production database. Only one production AIM database is required; all implemented languages are supported by the one database.

- 1 In MFG/UTIL select Database|Create Database.

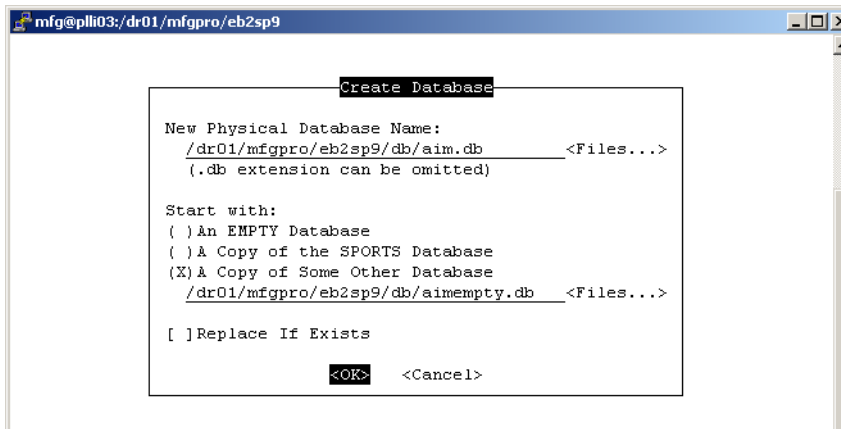


Fig. 1.5
Create the AIM Database

- 2 Enter `aim` and the full path to the `/db` directory as the new physical database name. Under Start With, select A Copy of Some Other Database. Use the Files button to browse for the correct language-specific empty AIM database. For US English, this would be `aimempty.db`. Choose OK.

- 3 The new database is created.

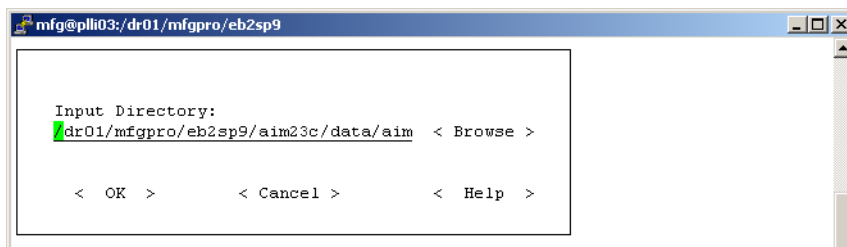
Load AIM Data

Data must be loaded into MFG/PRO and AIM databases through MFG/UTIL including `aim.db`, `mfgprod.db`, and `admprod.db`. The following steps walk you through the first connection and load. Table 1.3 on page 15 lists the other loads required and the source directories. Repeat these steps for each required load.

- 1 Choose Database|Load Data into Database.
- 2 Connect to `aim.db` and choose OK.
- 3 Enter the correct input directory:

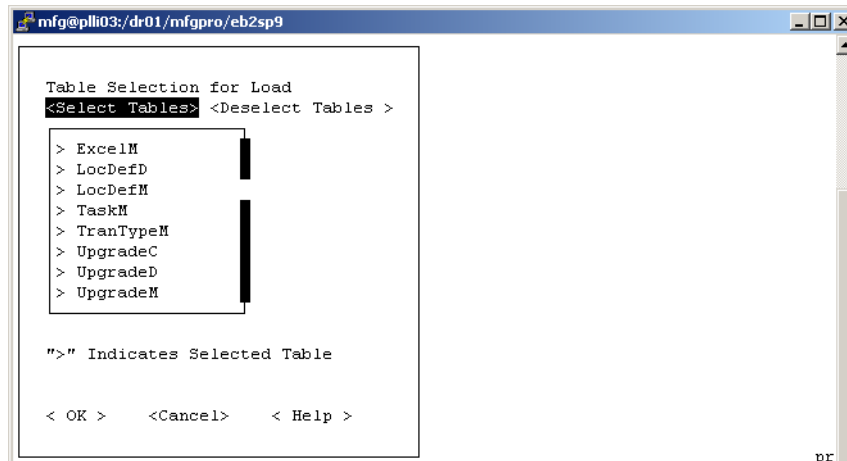
`AIMInstallDir/data/aim`

Fig. 1.6
Load the AIM
Default Data

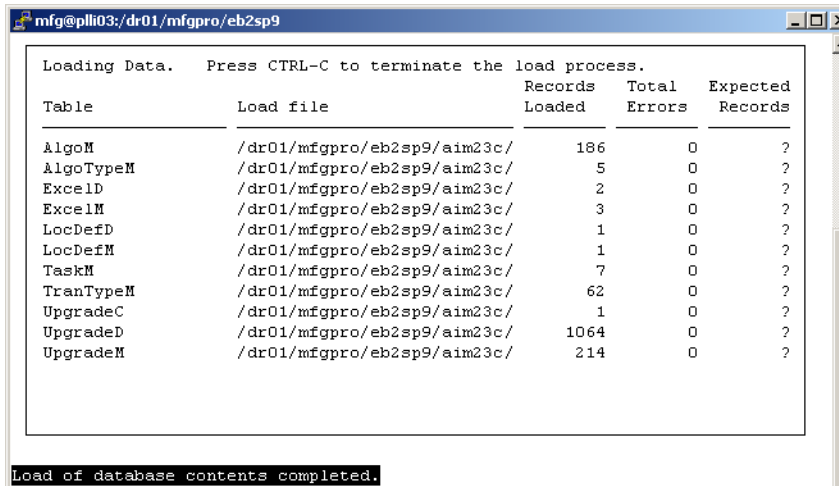


- 4 When the tables display, make sure all are selected and choose OK.

Fig. 1.7
Select All Tables
for Load



- 5 When the load is complete, press spacebar to close the window.



```

Loading Data.  Press CTRL-C to terminate the load process.
Table          Load file                Records  Total  Expected
Loaded         Errors    Records
-----
AlgoM          /dr01/mfgpro/eb2sp9/aim23c/  186     0      ?
AlgoTypeM     /dr01/mfgpro/eb2sp9/aim23c/   5     0      ?
ExcelD        /dr01/mfgpro/eb2sp9/aim23c/   2     0      ?
ExcelM        /dr01/mfgpro/eb2sp9/aim23c/   3     0      ?
LocDefD       /dr01/mfgpro/eb2sp9/aim23c/   1     0      ?
LocDefM       /dr01/mfgpro/eb2sp9/aim23c/   1     0      ?
TaskM         /dr01/mfgpro/eb2sp9/aim23c/   7     0      ?
TranTypeM     /dr01/mfgpro/eb2sp9/aim23c/  62     0      ?
UpgradeC      /dr01/mfgpro/eb2sp9/aim23c/   1     0      ?
UpgradeD      /dr01/mfgpro/eb2sp9/aim23c/ 1064    0      ?
UpgradeM      /dr01/mfgpro/eb2sp9/aim23c/  214    0      ?

Load of database contents completed.

```

Fig. 1.8
Data Load
Completion Screen

- 6 Repeat steps 1 through 5 to connect to the databases listed in Table 1.3 and to load data from the associated directories.

In the input directory names, replace /xx with the language code being loaded; for example /fr .

Important For additional languages, repeat the loads from the /xx directories for each language you are implementing, including /us.

Database	Description	Input Directory
mfgprod	MFG/PRO production database	<i>AIMInstallDir</i> /data/mfg <i>AIMInstallDir</i> /data/mfg/xx
admprod	MFG/PRO admin database	<i>AIMInstallDir</i> /data/mfgadmin <i>AIMInstallDir</i> /data/mfgadmin/xx

Table 1.3
AIM Data Loads
and Directories

Note You may get record already exists errors. These can safely be ignored.

Compiling AIM: UNIX

For Windows compiles, go to “Compiling AIM: Windows” on page 19.

Prior to running AIM under MFG/PRO, you must compile the AIM code and several modified MFG/PRO programs specific to your release and service pack. Appropriate compile list files (`aim.wrk` and `qad.wrk`) are located in the MFG/PRO version and service-pack specific directories.

To compile for a language other than US, add the language directory, `/XX`, in your PROPATH where `XX` is the language code.

Before compiling, a compile script must be created.

Create UNIX Compile Script

Compiling under UNIX requires a script to launch Progress, connect to the required databases, and start the compile program. The example is called `aimcomp.sh` and resides in `MFGPROInstallDir`.

```
MFGDIR=/dr01/mfgpro/eb2sp9;export MFGDIR
AIMDIR=/dr01/mfgpro/aim23c;export AIMDIR
stty intr '^c'
DLC=/dr01/progress/dlc91e;export DLC
PATH=$PATH,$DLC;export PATH
PROMSGS=$DLC/promsgs;export PROMSGS
PROTERMCAP=$DLC/protermcap;export PROTERMCAP
PROPATH=.:$AIMDIR:$AIMDIR/us:$AIMDIR/us/src:$AIMDIR/us/
sp5:$MFGDIR:$MFGDIR/us:$MFGDIR/xrc;export PROPATH

cd $AIMDIR
exec $DLC/bin/_progres -pf aim.pf;
```

Include the following directories in the PROPATH in the sequence shown:

```
AIMInstallDir
AIMInstallDir/us
AIMInstallDir/us/src
AIMInstallDir/us/SLevel
MFGPROInstallDir
MFGPROInstallDir/us
MFGPROInstallDir/xrc
```

The `-pf` file lists the databases the script connects to; it must include the `aim` database. It also includes several connection parameters.

Create `aim.pf` in `AIMInstallDir`.

```
-db mfgprod -ld qadddb -H plli03 -S eb2sp9prod-srv -trig triggers
-db aim -ld aimdb -H plli03 -S eb2sp9aim-srv -trig triggers
-db admprod -ld qadadm -H plli03 -S eb2sp9adm-srv -trig triggers
-db hlpprod -ld qadhelp -H plli03 -S eb2sp9hlp-srv
-cpstream ibm850 -cpinternal iso8859-1 -cprcodein iso8859-1
-cpcoll basic -inp 32000 -Bt 350 -c 30 -D 100 -mmax 3000 -nb 200
-s 96 -q -T /dr01/tmp -h 7
```

The logical database name for `aim.db` must be `aimdb`. The `-inp` parameter is required to increase the size allowed for individual lines of source code.

Important For additional language compiles, change the `.pf` file name to reflect the language you are compiling. The language-specific `.pf` file must reference the empty database loaded with the language-specific schema.

Fix qad.wrk Errors

There are two errors in the `qad.wrk` compile list. Following two of the file names, the letters `chr` appear.

- 1 Open `AIMInstallDir/us/qad.wrk` in a text editor.
- 2 Delete the two instances of `chr`.
- 3 Save and exit the file.

Compile Under UNIX

You run through a portion of these steps twice to compile both AIM and modified MFG/PRO code.

- 1 In a UNIX session, navigate to `MFGPROInstallDir`.
- 2 Launch the script:


```
./aimcomp.sh
```
- 3 The Progress Editor displays.
- 4 Use File|Open to locate and open `AIMInstallDir/us/whcomp.p`.

5 Make the following changes:

wk_home. Enter the destination where the compiled code is saved. The slash at the end of the directory name is required. This should be *AIMInstallDir*.

wk_log. The name and location of the log file from the compile; for example, *AIMInstallDir/us/aimchr.001*.

wk_list. The name and location of the compile list. The files—*aim.wrk* and *qad.wrk*—are located in *AIMInstallDir/us*.

A portion of the file appears with sample changes in bold below.

```

/**SET DISPLAY TYPE**/
if session:display-type = "TTY" then
    assign wk_home = "/dr01/mfgpro/aim23c/"
    wk_log = "/dr01/mfgpro/aim23c/us/aimchr.001".
else
    assign wk_home = "../obj.p8/90a/gui/"
    wk_log = "../admin/install/compile/aimgui.res".

/**SET LANGUAGE**/
&IF index(propath,"LANG=fr") <> 0 &THEN
    wk_lang = "fr/".
&ELSEIF index(propath,"LANG=du") <> 0 &THEN
    wk_lang = "du/".
&ELSE
    wk_lang = "us/".
&ENDIF

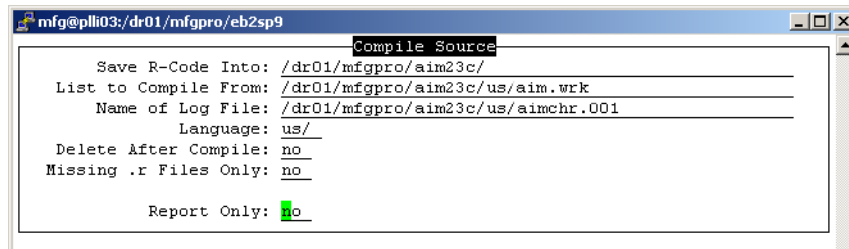
assign wk_list = "/dr01/mfgpro/aim23c/us/aim.wrk".

```

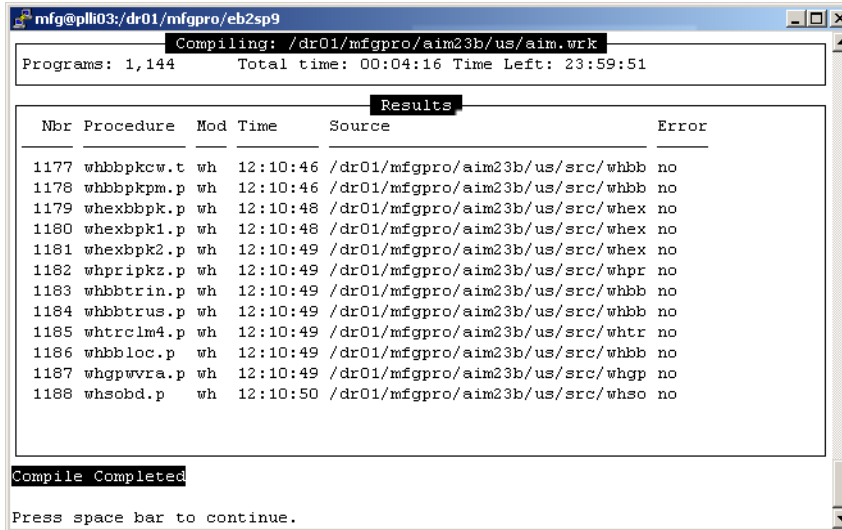
6 Save your changes.

7 Select Compile|Run from the Progress Editor menu. The AIM compile screen displays. On the first pass, the values should be correct from your edit of the file in the previous steps. On the second pass, change *aim.wrk* to *qad.wrk*.

Fig. 1.9
AIM Compiler



- 8 Press Go to launch the compile. A report window displays showing compile progress and error status.



```

mfg@plli03:dr01/mfgpro/eb2sp9
Compiling: /dr01/mfgpro/aim23b/us/aim.wrk
Programs: 1,144      Total time: 00:04:16 Time Left: 23:59:51

Results
-----
Nbr Procedure Mod Time Source Error
-----
1177 whbbpkcw.t wh 12:10:46 /dr01/mfgpro/aim23b/us/src/whbb no
1178 whbbpkpm.p wh 12:10:46 /dr01/mfgpro/aim23b/us/src/whbb no
1179 whexbbpk.p wh 12:10:48 /dr01/mfgpro/aim23b/us/src/whex no
1180 whexbpk1.p wh 12:10:48 /dr01/mfgpro/aim23b/us/src/whex no
1181 whexbpk2.p wh 12:10:49 /dr01/mfgpro/aim23b/us/src/whex no
1182 whprpkz.p wh 12:10:49 /dr01/mfgpro/aim23b/us/src/whpr no
1183 whbbtrin.p wh 12:10:49 /dr01/mfgpro/aim23b/us/src/whbb no
1184 whbbtrus.p wh 12:10:49 /dr01/mfgpro/aim23b/us/src/whbb no
1185 whtrclm4.p wh 12:10:49 /dr01/mfgpro/aim23b/us/src/whtr no
1186 whbbloc.p wh 12:10:49 /dr01/mfgpro/aim23b/us/src/whbb no
1187 whgpwvra.p wh 12:10:49 /dr01/mfgpro/aim23b/us/src/whgp no
1188 whsobd.p wh 12:10:50 /dr01/mfgpro/aim23b/us/src/whso no

Compile Completed
Press space bar to continue.

```

Fig. 1.10
Compile Status
Screen

- 9 When the compile is complete, press the spacebar to close the report window. The Progress session ends.
- 10 Repeat steps 2 through 9 for the `qad.wrk` compile list. Make sure to change `aim.wrk` to `qad.wrk` in List to Compile From in the Compile Source screen.
- 11 Repeat steps 2 through 9 for additional languages, making sure to edit the launch command in step 2 and the paths in step 7 to include the language-specific `.pf` file and paths.
- 12 Press the spacebar to end the session following the final compile.

Compiling AIM: Windows

See “Compiling AIM: UNIX” on page 16 for UNIX systems.

Prior to running AIM under MFG/PRO, you must compile the AIM code and several modified MFG/PRO programs specific to your release and service pack. Appropriate compile list files (`aim.wrk` and `qad.wrk`) are located in the MFG/PRO version and service-pack specific directories.

To compile for a language other than US, add the language directory, `\XX`, in your `PROPATH` where `XX` is the language code.

Before compiling, initialization files and scripts must be created or modified.

Modify Windows .ini and .pf Files

- 1 In `MFGPROInstallDir`, create a copy of `Production.ini` named `aimcomp.ini`.
- 2 Create a copy of `Production.pf` named `aimcomp.pf`.
- 3 Open `aimcomp.ini` in a text editor. Insert the following entries at the beginning of the `PROPATH` as a comma-separated list in the order shown:

```
\AIMInstallDir,
\AIMInstallDir\us,
\AIMInstallDir\us\src,
\AIMInstallDir\us\sp5,
\MFGPROInstallDir,
\MFGPROInstallDir\us
\MFGPROInstallDir\xrc
```

For Windows, update both the `[Startup]` and `[WincharStartup]` section `PROPATH`.

- 4 Save your changes.
- 5 If you are planning to compile additional languages, edit each `.ini` file `PROPATH` as described in steps 3 and 4; for example, `aimFRcomp.ini`.
- 6 Open `aimcomp.pf` in a text editor. Add the `aim` database as shown.

```
-db e:\mfgpro\eb2sp5\db\mfgprod -ld qaddb -trig triggers
-db e:\mfgpro\eb2sp5\db\admprod -ld qadadm -trig triggers
-db e:\mfgpro\eb2sp5\db\hlpprod -ld qadhelp
-db e:\mfgpro\eb2sp5\db\aim.db -ld aimdb -trig triggers
```

- 7 Save your changes

Compile Under Windows

- 1 Launch a command session and navigate to *AIMInstallDir\us*.
- 2 Run the following command:

```
%DLC%\bin\_progres.exe -inp 32000
-pf MFGPROInstallDir\aimcomp.pf
-ininame MFGPROInstallDir\aimcomp.ini
```

The command contents are:

%DLC%\bin_progres.exe. The Progress executable that launches the Progress session.

-inp 32000. A parameter to increase the size allowed for individual lines of code.

-pf MFGPROInstallDir\aimcomp.pf. The set of databases started and connected during this Progress session.

-ininame MFGPROInstallDir\aimcomp.ini. The initialization file for the Progress session, including screen colors, PROPATH, and so on.

Important For additional language compiles, change the *.pf* and *.ini* file names to those you created for the language you are compiling. The *.pf* file must reference the empty database loaded with the language-specific schema.

- 3 The Progress Editor displays.
- 4 Use File|Open to locate and open *AIMInstallDir/us/whcomp.p*.
- 5 Make the following changes:

wk_home. This is the compile destination where the r-code is saved. The slash at the end of the directory name is required. This should be *AIMInstallDir*.

wk_log. The name and location of the log file from the compile; for example, *AIMInstallDir/us/aimchr.001*.

wk_list. The name and location of the compile list. The files—*aim.wrk* and *qad.wrk*—are located in *AIMInstallDir/us*.

A portion of the file appears with sample changes in bold below.

```

/**SET DISPLAY TYPE**/
if session:display-type = "TTY" then
    assign wk_home = "c:\mfgpro\aim23c\"
        wk_log = "c:\mfgpro\aim23c\us\aimchr.001".
else
    assign wk_home = "../obj.p8/90a/gui/"
        wk_log = "../admin/install/compile/aimgui.res".

/**SET LANGUAGE**/
&IF index(propath,"LANG=fr") <> 0 &THEN
    wk_lang = "fr/".
&ELSEIF index(propath,"LANG=du") <> 0 &THEN
    wk_lang = "du/".
&ELSE
    wk_lang = "us/".
&ENDIF

assign wk_list = "c:\mfgpro\aim23c\us\aim.wrk".

```

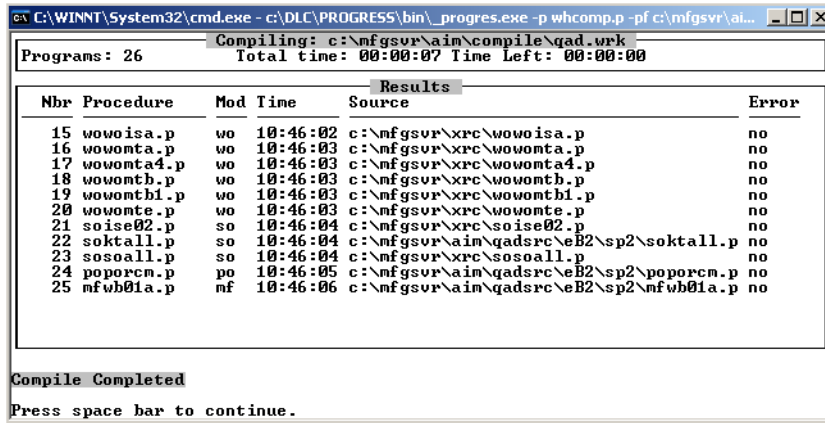
- 6 Save your changes.
- 7 Select Compile|Run from the Progress Editor menu. The AIM compile screen displays. On the first pass, the values should be correct from your edit of the file in the previous steps. On the second pass, change aim.wrk to qad.wrk.

Fig. 1.11
AIM Compiler

Compile Source

Save R-Code Into:	<u>c:\mfgpro\aim23c\us\</u>
List to Compile From:	<u>c:\mfgpro\aim23c\us\aim.wrk</u>
Name of Log File:	<u>c:\mfgpro\aim23c\us\aimchr.log</u>
Language:	<u>us/</u>
Delete After Compile:	<u>no</u>
Missing .r Files Only:	<u>no</u>
Report Only:	<input checked="" type="checkbox"/> <u>no</u>

- 8 Press Go to launch the compile. A report window displays showing compile progress and error status.



```

C:\WINNT\System32\cmd.exe - c:\DLC\PROGRESS\bin\_progres.exe -p whcomp.p -pf c:\mfgsvr\ai...
Compiling: c:\mfgsvr\aim\compile\qad.wrk
Programs: 26      Total time: 00:00:07 Time Left: 00:00:00

  Nbr Procedure  Mod Time      Source                                     Error
  ---
  15 wowoisa.p   wo 10:46:02 c:\mfgsvr\xrc\wowoisa.p                  no
  16 wowomta.p  wo 10:46:03 c:\mfgsvr\xrc\wowomta.p                  no
  17 wowomta4.p wo 10:46:03 c:\mfgsvr\xrc\wowomta4.p                 no
  18 wowomth.p  wo 10:46:03 c:\mfgsvr\xrc\wowomth.p                  no
  19 wowomth1.p wo 10:46:03 c:\mfgsvr\xrc\wowomth1.p                 no
  20 wowomte.p  wo 10:46:03 c:\mfgsvr\xrc\wowomte.p                  no
  21 soise02.p   so 10:46:04 c:\mfgsvr\xrc\soise02.p                  no
  22 soktall.p  so 10:46:04 c:\mfgsvr\aim\qadsrce\B2\sp2\soktall.p   no
  23 sosoall.p   so 10:46:04 c:\mfgsvr\xrc\sosoall.p                  no
  24 poporc.m.p po 10:46:05 c:\mfgsvr\aim\qadsrce\B2\sp2\poporc.m.p  no
  25 mfub01a.p  nf 10:46:06 c:\mfgsvr\aim\qadsrce\B2\sp2\mfub01a.p   no

Compile Completed
Press space bar to continue.

```

Fig. 1.12
Compile Status
Screen

- 9 When the compile is complete, press the spacebar to close the report window. The AIM Compiler redisplay.
- 10 Repeat steps 7 through 9 for `qad.wrk`.
- 11 Repeat steps 2 through 9 for additional languages, making sure to edit the launch command in step 2 to include the language-specific `.pf` and `.ini` files.
- 12 Press Exit to exit the compiler. You enter the Progress Editor. Access the menus and choose File|Exit to close the editor.

Creating a Launch Script

After the compile, copy `client.Production` for UNIX, or `ClientProduction.bat` for Windows, and modify them to enable the scripts to launch AIM. Alternately, for UNIX, you can copy or modify `aimcomp.sh`.

- 1 Copy the appropriate script for your operating system:

OS	File Name	Copy to:
UNIX	<code>client.Production</code>	<code>client.AIM</code>
Windows	<code>clientProduction.bat</code>	<code>clientAIM.bat</code>

▶ See “RDF Technical Setup” in the Radio Data Terminals chapter in *User Guide: Advanced Inventory Management*.

- 2 Open the new copy in a text editor.
- 3 Locate the `-p` argument, and change the run program from `mf.p` to `cpdmf.p`.
- 4 Modify the `-pf` argument to call `aimcomp.pf`.
- 5 Radio Data Terminals (RDTs) are supported on character clients. In addition, to run an RF session, the following lines must be added to the `-ini` file for Windows and set as variables in UNIX.

```
AIMSystemCode=RF;export AIMSystemCode
AIMShortMsg=YES;export AIMShortMsg
AIMSelectType=B;export AIMSelectType
```

For example, in the UNIX script:

```
MFGDIR=/dr01/mfgpro/eb2sp9;export MFGDIR
AIMDIR=/dr01/mfgpro/aim23c;export MFGDIR
AIMSystemCode=RF;export AIMSystemCode
AIMShortMsg=YES;export AIMShortMsg
AIMSelectType=B;export AIMSelectType
stty intr '^c'
DLC=/dr01/progress/dlc91e;export DLC
PATH=$PATH,$DLC;export PATH
PROMSGS=$DLC/promsgs;export PROMSGS
PROTERMCAP=$DLC/protermcap;export PROTERMCAP
PROPATH=.:$AIMDIR:$AIMDIR/us:$AIMDIR/us/src:$AIMDIR/us/
sp5:$MFGDIR:$MFGDIR/us:$MFGDIR/xrc;export PROPATH

$DLC/bin/_progres -c 30 -d mdy -yy 1920 -Bt 350 -D 100 -mmax 3000
-nb 200 -s 63 -noshvarfix -p cpdmf.p -pf /dr01/mfgpro/eb2sp9/
aimcomp.pf
```

- 6 Save the file.

Updating Help

Important Updates to AIM help exist only in the character-client help. To make these changes available in a GUI environment, follow the steps outlined in “Access Revised Character Help Information” on page 26.

Load Online Help

The online help database is character only. You can load online help data at any time after you create your databases.

- 1 Launch MFG/PRO.
- 2 From the Main Menu, open Field Help Load (36.4.19).
- 3 In the Language field, enter the code of the language that you are loading help for and press Enter.

Note AIM ships only English help. The language code is `us`.
- 4 Skip to Field Help Load File, leaving all other fields blank, and enter the two-letter language code directory followed by the name of the help file, which is always `fieldhlp.fhd`. In the AIM installation, the file is located in:

`AIMInstallDir\data/mfg/us/fieldhlp.fhd`

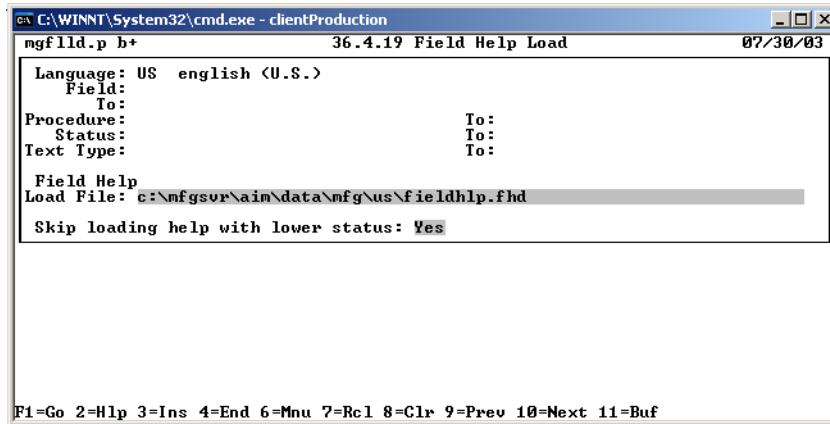


Fig. 1.13
Field Help Load in
MFG/PRO

- 5 Accept the default values in all other fields and press Go to begin the load process.

As the load proceeds, the number of records that have been read and loaded displays at the bottom of the screen. On completion, the screen should look like Figure 1.14.

Fig. 1.14
Field Help Load
Completion Screen

```

C:\WINNT\System32\cmd.exe - clientProduction
mgf1ld.p b+ 36.4.19 Field Help Load 07/30/03

Language: US english (U.S.)
Field:
To:
Procedure: To:
Status: To:
Text Type: To:

Field Help
Load File: c:\mfgsrv\aim\data\mfg\us\fieldhlp.fhd
Skip loading help with lower status: Yes

Loaded flhm_nst: 493          Loaded flhd_det: 4.559
Read flhm_nst: 493          Read flhd_det: 4.559
Expected flhm_nst: 493      Expected flhd_det: 4.559

F1=Go 2=Hlp 3=Ins 4=End 6=Mnu 7=Rcl 8=Clr 9=Prev 10=Next 11=Buf

```

Access Revised Character Help Information

Updated help is available in character mode only. If your configuration includes Windows GUI clients, perform these additional steps to make the character-based help viewable from those clients:

- 1 Open User Maintenance (36.3.18).
- 2 For each user accessing the new functions, set WinHelp to No.
- 3 Press Go to save the changes.

Starting AIM

Start AIM by launching the modified `.bat` or `.sh` file created under “Creating a Launch Script” on page 23.

Once MFG/PRO starts, enter menu 80 in the character client, or locate AIM on the Custom menu in GUI.

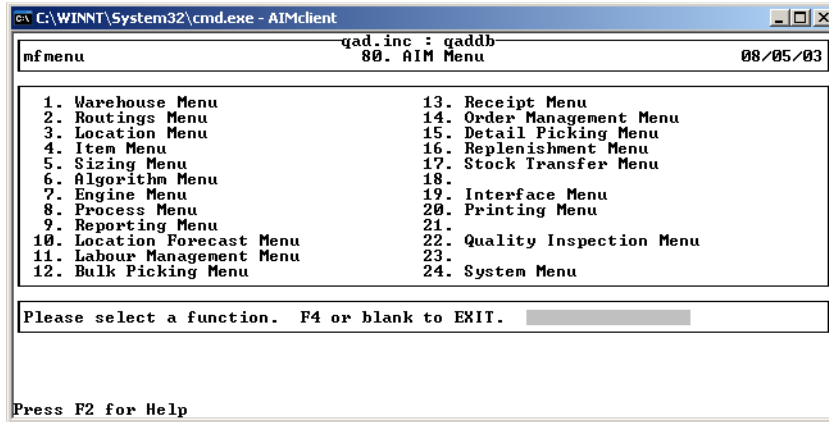


Fig. 1.15
AIM Main Menu

- 4 Navigate to Installed Products, CPD Control File Maintenance (80.24.21.19).

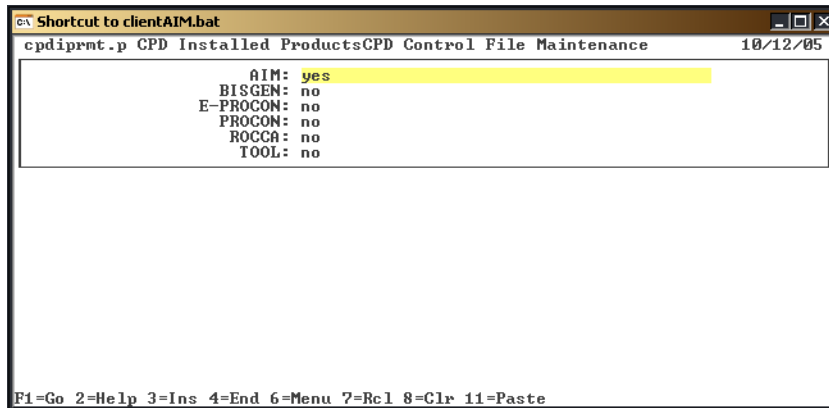


Fig. 1.16
CPD Control File
Maintenance

- 5 Set AIM to yes.

See *User Guide: Advanced Inventory Management* for additional information on starting and using AIM.

Upgrading AIM

This chapter provides information on upgrading an earlier version of AIM to the current version.

Overview **30**

Updating the MFG/PRO Service Pack Level **30**

Upgrading the AIM Version **31**

Updating Help **36**

Overview

This upgrade chapter supports the conversion of all previously released versions of AIM to the current version, AIM 2.3c. The previously released versions are AIM 2.0, 2.1b, 2.1c, 2.2a, 2.3a, and 2.3b. The only database changes in this sequence occurred between 2.2a and 2.3a. There were no database changes between AIM 2.3a and 2.3c.

A delta `.df` file containing the database changes is provided for upgrades for versions 2.0, 2.1b, 2.1c, and 2.2a to version 2.3c.

In addition, this chapter includes instructions for updating your AIM installation when you upgrade your MFG/PRO service pack level.

Updating the MFG/PRO Service Pack Level

If you upgrade your MFG/PRO service pack level, you must also upgrade your AIM installation. The examples in this section will assume you are upgrading from eB2 service pack 5 to eB2 service pack 9.

- 1 If your existing AIM media does not contain the MFG/PRO version and service pack level in `AIM/chr/qadsrc`, then contact QAD to obtain AIM media that includes the MFG/PRO version and service pack level.
- 2 Create a service pack directory in `AIMInstallDir/us`:


```
AIMInstallDir/us/sp9
```
- 3 Copy the specific directory for your MFG/PRO version and service pack from the `/chr/qadsrc` directory from the CD to `AIMInstallDir/us/sp9`.
- 4 Copy the new `qad.wrk` for your MFG/PRO version and service pack from the `/chr/qadsrc` directory from the CD to `AIMInstallDir/us`.
- 5 Modify `MFGPROInstallDir/aimcomp.sh` to reflect the new `PROPATH`.

```
AIMDIR=/dr01/mfgpro/aim23c;export AIMDIR
PROPATH=. :$AIMDIR:$AIMDIR/us:$AIMDIR/us/src:$AIMDIR/us/
sp9:$MFGDIR:$MFGDIR/us:$MFGDIR/xrc;export PROPATH
```

- 6 Compile only the new `qad.wrk` using the instructions in “Compile Under UNIX” on page 17 or “Compile Under Windows” on page 21.
- 7 This completes the AIM update. No database changes are required.

Upgrading the AIM Version

Prior to Starting

Before starting the upgrade, complete the following steps:

- Shut down your AIM production system.
- Back up your existing AIM database.

Install New AIM Media

Follow the instructions in “Install AIM Files” on page 9. Make sure your new `AIMInstallDir` is parallel to both `MFGPROInstallDir` and your existing `AIMInstallDir`.

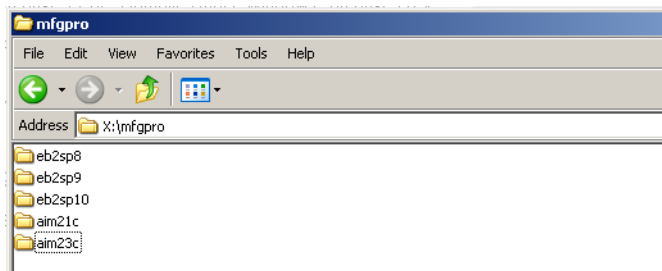


Fig. 2.1
New AIM
Directory for
aim23c

Update Existing aimempty

The `aimempty` database from your prior release should already exist in your AIM environment. For all versions prior to AIM 2.3a, you must load the language-specific delta `.df` file.

Note If you are supporting multiple languages, you must repeat these steps for each language-specific empty database.

Load Schema Updates

Complete these steps for all versions prior to AIM 2.3a.

- 1 In MFG/UTIL, select Load Database Schema (.df) File from the Database menu.
- 2 In the Connect Database screen, enter the empty database name and location. Choose OK.
- 3 In the Enter Data Definition File to Load screen, use the Browse button to navigate to the appropriate delta schema definition file.
 - For US English choose *AIMInstallDir/defs/deltaaimusv9.df*.
 - For a language other than US English choose *AIMInstallDir/defs/xx/deltaaimxxv9.df* where *xx* is the language code.
- 4 Choose OK.
- 5 A log window displays and shows load progress. When the load completes, choose OK to close the window.
- 6 Repeat these steps for each empty language-specific AIM database.

Compile Upgraded AIM Version

For a more detailed set of compile steps, see the section “Compiling AIM: UNIX” on page 16 or “Compiling AIM: Windows” on page 19.

Compile New Code

For additional language compiles, change the .pf file name to one you created for the language you are compiling. This .pf file must reference the empty database loaded with the language-specific schema.

- 1 Open your `aimcomp.sh` (UNIX) or `aimcomp.ini` (Windows) file and modify the paths in the file to reflect the new AIM installation path.

```
AIMDIR=/dr01/mfgpro/aim23c;export AIMDIR
PROPATH=.:$AIMDIR:$AIMDIR/us:$AIMDIR/us/src:$AIMDIR/us/sp9:$MFGDIR:$MFGDIR/us:$MFGDIR/xrc;export PROPATH
```

- 2 Create the target `/triggers` directory for the compile:

```
AIMInstallDir/triggers
```

- 3 Launch a command session and for UNIX navigate to `MFGPROInstallDir` and run `aimcomp.sh`:

```
./aimcomp.sh
```

For Windows, navigate to `MFGPROInstallDir` and run:

```
%DLC%\bin\_progres.exe -inp 32000 -pf aimcomp.pf -ininame  
aimcomp.ini
```

- 4 The Progress Editor displays.
- 5 Use File|Open to locate and open `AIMInstallDir/us/whcomp.p`.
- 6 Select Compile|Run from the Progress Editor menu. The AIM compile screen displays. Modify the paths as necessary. Make sure the List to Compile From references `AIMInstallDir/us/qad.wrk`.

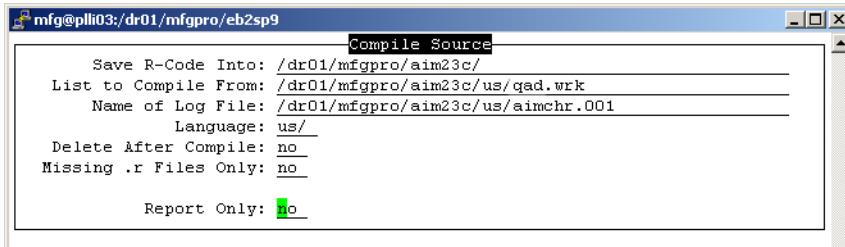
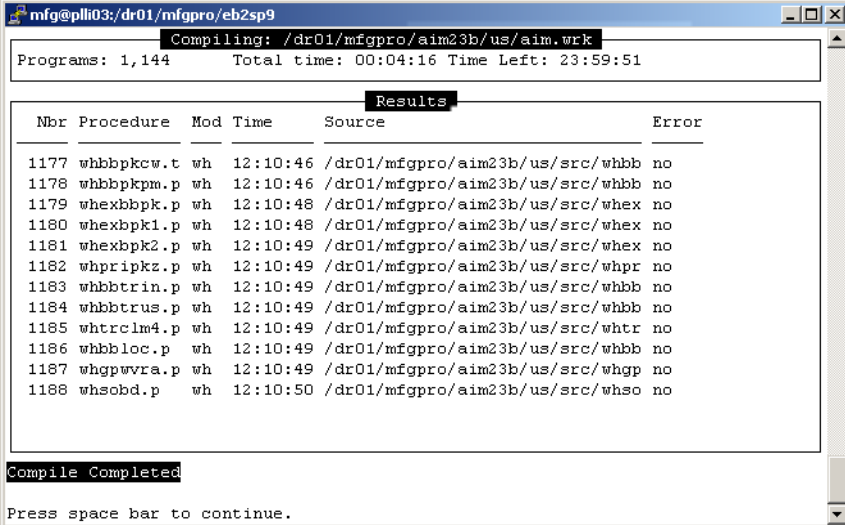


Fig. 2.2
AIM Compiler

- 7 Press Go to launch the compile. A report window displays showing compile progress and error status.

Fig. 2.3
Compile Status
Screen



```

mfg@plli03:/dr01/mfgpro/eb2sp9
Compiling: /dr01/mfgpro/aim23b/us/aim.wrk
Programs: 1,144 Total time: 00:04:16 Time Left: 23:59:51

Results
-----
Nbr Procedure Mod Time Source Error
-----
1177 whbbpkcw.t wh 12:10:46 /dr01/mfgpro/aim23b/us/src/whbb no
1178 whbbpkpm.p wh 12:10:46 /dr01/mfgpro/aim23b/us/src/whbb no
1179 whexbbpk.p wh 12:10:48 /dr01/mfgpro/aim23b/us/src/whex no
1180 whexbpk1.p wh 12:10:48 /dr01/mfgpro/aim23b/us/src/whex no
1181 whexbpk2.p wh 12:10:49 /dr01/mfgpro/aim23b/us/src/whex no
1182 whpripkz.p wh 12:10:49 /dr01/mfgpro/aim23b/us/src/whpr no
1183 whbbtrin.p wh 12:10:49 /dr01/mfgpro/aim23b/us/src/whbb no
1184 whbbtrus.p wh 12:10:49 /dr01/mfgpro/aim23b/us/src/whbb no
1185 whtrclm4.p wh 12:10:49 /dr01/mfgpro/aim23b/us/src/whtr no
1186 whbbloc.p wh 12:10:49 /dr01/mfgpro/aim23b/us/src/whbb no
1187 whgpwvra.p wh 12:10:49 /dr01/mfgpro/aim23b/us/src/whgp no
1188 whsabd.p wh 12:10:50 /dr01/mfgpro/aim23b/us/src/whso no

Compile Completed
Press space bar to continue.

```

- 8 When the compile is complete, press the spacebar to close the report window. The Progress session ends.
- 9 Repeat steps 3 through 8 for additional languages, making sure to edit the launch command in step 3 to include the language-specific `.pf` and `.ini` files.

Update the AIM Production Database

Though you have loaded the schema changes into the empty databases, you must load them into the production database as well. You will also need to load new administrative data such as new messages and field values into the AIM database, as well as into `mfgprod` and `mfgadmin`.

Load Schema Updates

Complete these steps for all versions prior to AIM 2.3a.

- 1 In MFG/UTIL, select Load Database Schema (.df) File from the Database menu.
- 2 In the Connect Database screen, enter the production database name and location. Choose OK.

- 3 In the Enter Data Definition File to Load screen, use the Browse button to navigate to the appropriate delta schema definition file.
 - For a US English production database choose `AIMInstallDir\defs\deltaaimusv9.df`.
 - For a production database with a language other than US English choose `AIMInstallDir\defs\xx\deltaaimxxv9.df` where `xx` is the language code.
- 4 Choose OK.
- 5 A log window displays and shows load progress. When the load completes, choose OK to close the window.

Load Data Updates

Complete these steps for all previous versions.

- 1 In MFG/UTIL, select Load System Data into Database from the Database menu.
- 2 In the Connect Database screen, enter the AIM production database name and location. Choose OK.
- 3 A log window displays to confirm the connection. Choose Close.
- 4 In the Load Data Contents screen, use the Browse button to navigate to `AIMInstallDir\data\aim`. Select any file in the directory and choose Open. Then choose OK in the Load Data Contents screen.

The `mfgprod` data files are in `AIMInstallDir\data\mfg` and in `AIMInstallDir\data\mfg\us`.

For `admprod`, go to `AIMInstallDir\data\mfgadmin` and in `AIMInstallDir\data\mfgadmin\us`.
- 5 A list of tables in the directory is built and all tables with data updates are selected by default. Choose OK to start the load.
- 6 A log window displays to show progress. When the load completes, choose Close.

Note When performing an upgrade, the data files contain all data, not just deltas. Error files are generated for the data records that already exist in the database. These can be safely ignored.

- 7 Repeat steps 1 through 6 for your `mfgprod` and `admprod` databases, using the paths identified in step 4.
- 8 Repeat steps 1 through 6 for each additional language as well, loading only the language-specific data for `mfgprod` and `admprod` in step 4.

Updating Help

Help files have been updated for AIM 2.3. Updates to AIM help exist only in the character-client help. To make these changes available in a GUI environment, follow the steps outlined in “Access Revised Character Help Information” on page 37.

Load Online Help

The online help database is character only. You can load online help data at any time after you create your databases.

- 1 Launch MFG/PRO.
- 2 From the Main Menu, open Field Help Load (36.4.19).
- 3 In the Language field, enter the code of the language that you are loading help for and press Enter.

Note AIM ships only English help. The language code is `us`.

- 4 Skip to Field Help Load File, leaving all other fields blank, and enter the two-letter language code directory followed by the name of the help file, which is always `fieldhlp.fhd`. In the AIM installation, the file is located in:

```
AIMInstallDir/data/mfg/us/fieldhlp.fhd
```

- 5 Accept the default values in all other fields and press Go to begin the load process.

As the load proceeds, the number of records that have been read and loaded displays at the bottom of the screen.

Access Revised Character Help Information

Updated help is available in character mode only. If your configuration includes Windows GUI clients, perform these additional steps to make the character-based help viewable from those clients:

- 1 Open User Maintenance (36.3.18).
- 2 For each user accessing the new functions, set WinHelp to No.
- 3 Press Go to save the changes.

Index

A

- admprod 35
- admprod.db 14
- AIM
 - Introduction to 5, 29
- aim.db 13, 14
- aim.wrk 7
- aimempty 31
- aimempty.db 11
- aimFRempty 11
- AIMInstallDir 6
- aimUSEmpty 11

C

- CD
 - installing 9

D

- database
 - create 11
 - load data 14
 - load data definitions 12
- directories
 - compile 7
 - data 7

E

- empty databases
 - multiple languages 11

F

- Field Help Load 25, 36
- fieldhlp.fhd 25, 36

H

- help
 - language 25, 36
 - loading 25, 36

I

- installation
 - CD media 9

L

- languages
 - compiles 16, 20
 - empty database requirements 11
 - help 25, 36

M

- MFG/UTIL 11
 - starting 9
- mfgprod 35
- mfgprod.db 14
- mount commands 9

P

- PROPATH 7
 - languages 16, 20

Q

- qad.wrk 7

S

- scripts
 - MFG/UTIL 9

U

- upgrades
 - compiling 32
 - overview 30
 - schema updates 32
 - versions supported 30

