



Installation Guide **QAD Warehousing**

78-0946-3.1.
QAD Warehousing version 3.1
September 2014

This document contains proprietary information that is protected by copyright and other intellectual property laws. No part of this document may be reproduced, translated, or modified without the prior written consent of QAD Inc. The information contained in this document is subject to change without notice.

QAD Inc. provides this material as is and makes no warranty of any kind, expressed or implied, including, but not limited to, the implied warranties of merchantability and fitness for a particular purpose. QAD Inc. shall not be liable for errors contained herein or for incidental or consequential damages (including lost profits) in connection with the furnishing, performance, or use of this material whether based on warranty, contract, or other legal theory.

QAD and MFG/PRO are registered trademarks of QAD Inc. The QAD logo is a trademark of QAD Inc.

Designations used by other companies to distinguish their products are often claimed as trademarks. In this document, the product names appear in initial capital or all capital letters. Contact the appropriate companies for more information regarding trademarks and registration.

Copyright ©2014 by QAD Inc.

QADWarehousing_IG_v031.pdf/crl/crl

QAD Inc.

100 Innovation Place
Santa Barbara, California 93108
Phone (805) 566-6000
<http://www.qad.com>

Contents

Warehousing Installation Guide Change Summary	v
Chapter 1 Installing QAD Warehousing	1
Overview	2
QAD Product Name Changes	2
Installation Requirements	3
QAD Warehousing Deployment	3
Languages	4
Radio Frequency Terminal Implementation	5
Installation Steps	5
Install QAD Warehousing Media	5
Install QAD Warehousing Files	5
Create the QAD Warehousing Empty Database	6
Load Database Schema	7
Create Empty Databases for Additional Languages	8
Build the QAD Warehousing Production Database	9
Load QAD Warehousing Data	9
Load MFG Definitions	10
Compiling QAD Warehousing: UNIX	11
Create UNIX Compile Script	11
Fix qad.wrk Errors	12
Compile Under UNIX	12
Compiling QAD Warehousing: Windows	14
Modify Windows .ini and .pf Files	14
Compile Under Windows	14
Creating a Launch Script	16
Updating Help	17
Starting QAD Warehousing	18
Language Settings	19
Chapter 2 Upgrading QAD Warehousing	21
Upgrade Overview	22
Updating the MFG/PRO Service Pack Level	22
Upgrading the QAD Warehousing Version	22
Prior to Starting	22

Install New QAD Warehousing Media	23
Update Existing QAD aimempty	23
Compile Upgraded QAD Warehousing Version	24
Update the QAD Warehousing Production Database	25
Updating Help	27
Product Information Resources	29
Index.....	31

Warehousing Installation Guide Change Summary

The following table summarizes significant differences between this document and previous versions.

Date/Version	Description	Reference
September 2014/3.1	Rebranded for 3.1	--
	Removed information on upgrading from version 3.0.8	page 23 page 25
July 2013/3.0.9	Added information on upgrading from 3.0.8	--
October 2012/3.0.8	Added information on upgrading from 3.0.7	page 23, page 26

Installing QAD Warehousing

This chapter provides information on installing QAD Warehousing.

Overview 2

Installation Steps 5

Compiling QAD Warehousing: UNIX 11

Compiling QAD Warehousing: Windows 14

Creating a Launch Script 16

Updating Help 17

Starting QAD Warehousing 18

Overview

This chapter provides instructions for installing the QAD Warehousing product in your MFG/PRO environments.

The QAD Warehousing installation requires the following steps:

- Install QAD Warehousing media to your server.
- Build the QAD Warehousing database.
- Load translated labels.
- Load default data to QAD Warehousing database.
- Load data to MFG/PRO database.
- Modify startup files.
- Compile QAD Warehousing application with MFG/PRO.
- Load character help in MFG/PRO.

QAD recommends you complete the QAD Warehousing installation in a test environment first.

If you are performing an upgrade of an existing QAD Warehousing system, see “Upgrading QAD Warehousing” on page 21.

QAD Product Name Changes

Because QAD Warehousing still interfaces with and supports older versions of QAD products, previously called MFG/PRO, procedures in this guide refer to the QAD product under the older name. This simplifies the procedure and avoids multiple notes to substitute your version and product name.

To help you substitute the appropriate product name for the procedure when installing your QAD product, use the following information:

- The product was branded as MFG/PRO eB2.1 from the initial release through SP4.
- Service Packs 5 and 6 were called QAD 2007 and QAD 2007.1, respectively.
- Beginning with SP7, the product is called QAD Enterprise Applications Standard Edition (SE) and reflects the year of the release, so you may be installing QAD Warehousing to work with:
 - QAD 2008 SE
 - QAD 2008.1 SE
 - QAD 2009 SE
 - QAD 2010 SE
 - QAD 2011 SE
 - QAD 2012 SE
 - QAD 2013 SE
 - QAD 2014 SE

Also, some QAD Warehousing installation-related files and directories are still under the former product name, AIM.

Installation Requirements

MFG/PRO Requirements

QAD Warehousing 3.1 can be installed with MFG/PRO eB2.1, Service Packs 2 through 14 (QAD 2014 SE) on a Progress database.

Note Oracle is not currently supported.

Progress Requirements

QAD Warehousing can be used with the same versions of Progress supported by MFG/PRO including Progress 9.1D, 9.1E, OpenEdge (OE10).

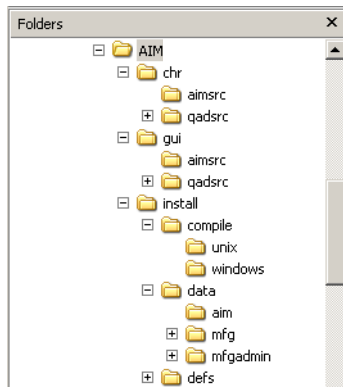
Note MFG/PRO eB2.1 SP4 requires Progress OpenEdge 10, and other MFG/PRO service packs can also be installed with OE10. While QAD Warehousing can be installed in a Progress OE10 environment, an additional configuration step is required.

QAD Warehousing Deployment

The recommended deployment of QAD Warehousing on your server is to place the QAD Warehousing directory structure (*AIMInstallDir*) parallel to the directory where you installed MFG/PRO (*MFGPROInstallDir*). On eB2 on Windows, for example, if the *MFGPROInstallDir* is `/dr01/mfgpro/eb2sp5`, the *AIMInstallDir* would be `/dr01/mfgpro/aim30`.

You can install QAD Warehousing in a different directory structure or on a different drive. If you do so, make sure your `PROPATH` is updated to run QAD Warehousing programs prior to baseline MFG/PRO code.

Fig. 1.1
CD Directories



The CD source directories are listed in Table 1.1.

Table 1.1
QAD Warehousing CD Directory Structure

Directory	Description
chr/aimsrc	QAD Warehousing character source code.
chr/qadsrc/...	Source code for modified MFG/PRO programs required for the QAD Warehousing application, sorted in subdirectories by MFG/PRO version and service pack level. (IR is initial release.) Each service-pack directory contains a list of MFG/PRO (qad.wrk) and QAD Warehousing (aim.wrk) programs to compile.
gui/aimsrc	QAD Warehousing GUI source code.
gui/qadsrc/...	Source code for modified MFG/PRO programs required for the QAD Warehousing application, sorted in subdirectories by MFG/PRO version and service pack level. (IR is initial release.)
install/compile	Contains a UNIX and Windows directory with operating system-specific versions of the QAD Warehousing compile utility whcomp.p and its subprogram whcompl.p.
install/conv	Contains a conversion utility to be run for upgrades.
install/data/...	Data (.d) files. Those under /mfg and /mfgadmin contain language-specific data directories. The character-client field help file is located under /mfg/us. Data for AIM-specific tables is in the /aim directory.
install/defs	Schema or data definition files (.df) for US English. Additional schema definition files containing translated labels are located beneath this directory in language directories.

If compiled source code is required, the structure of the compile destination directory is copied into a compiled source code directory named /xcode.

Languages

QAD Warehousing supports the English (US), Dutch (DU), French (FR), German (GE), Castilian Spanish (CS), Latin American Spanish, Brazilian Portugese (BP), Italian (IT), Slovak (SK), Chinese (CH), Traditional Chinese (TW), Japanese (JP), Russian (RU), Lithuanian (LT), and Polish (PL) languages.

To create a US English-only install, no special steps are required. To create a single-language install that is not US English, you must install the utddlng.p program, located in install/mfgutil folder, located in the Install media and load a set of translated schema definitions and set your compile destination directory to reflect the language code.

To support multiple languages, you create an empty QAD Warehousing database for each language (aimUSEmpty, aimFRempty, and so on) and load the appropriate language-specific schema definition (aimV9.df, QAD aimfrV9.df, and so on) into each. You then compile each language separately, setting the compile destination directory to reflect the language code.

Later, after you create a production QAD Warehousing database from an empty database, you load the language-specific QAD Warehousing data files for each language you are implementing into the MFG/PRO production and admin databases.

Radio Frequency Terminal Implementation

Because QAD Warehousing uses a radio frequency terminal (RF) and RF implementation requires a character client, if your MFG/PRO and QAD Warehousing clients are GUI-only under Windows, you must also install MFG/PRO and QAD Warehousing character clients to support an RF implementation. The database server can be either UNIX or Windows.

Installation Steps

QAD Warehousing ships on a single CD that contains all QAD Warehousing programs, modified MFG/PRO programs by version, and all available languages.

Install QAD Warehousing Media

In this set of steps, you mount the QAD Warehousing media and copy the required files to the server.

Mount the CD-ROM (UNIX Only)

- 1 Log on as `mfg`.
- 2 Mount the CD-ROM. Example commands are listed in Table 1.2.

Table 1.2
UNIX CD Drive Mount Commands

Hardware	Mount Command
Sun	<code>volcheck cdrom</code>
HP	<code>/etc/mount -F cdfs /dev/dsk/YourCDDevice /cdrom</code>
Digital	<code>mount -r -o noversion -t cdfs /dev/YourCDDevice /cdrom</code>
AIX	<code>smitty mountfs</code> Then select file system, directory, and file system type (<code>cdarfs</code>).
Linux	<code>mount /dev/hdb /mnt/cdrom</code> Where <code>/hdb</code> could be <code>hdc</code> or <code>hdd</code> among other possibilities.
All others	Refer to your operating system documentation or vendor for requirements to mount a CD-ROM. You may be able to type <code>man mount</code> to determine the correct command.

Install QAD Warehousing Files

Complete this section to install the QAD Warehousing files on your server. The instructions provide first the UNIX method, then the Windows method if necessary. In most cases, these steps can be completed in the Windows Explorer.

- 1 In UNIX, log on as user `mfg` under the group `qad`. For Windows, log in as a user with administrator privileges.
- 2 Create a QAD Warehousing directory parallel to `MFGPROInstallDir`; for example, if `MFGPROInstallDir` is `/dr01/mfgpro/eb2sp5`, then install QAD Warehousing to `/dr01/mfgpro/aim30`. This is the `AIMInstallDir`.

6 Installation Guide — QAD Warehousing

3 Create the following directories within the *AIMInstallDir*:

- *AIMInstallDir/triggers*
- *AIMInstallDir/us*
- *AIMInstallDir/us/src*
- *AIMInstallDir/us/spX*

The */spX* directory refers to your MFG/PRO service-pack level. For eB2 service pack 5, this directory would be */sp5*.

4 Copy the contents of */install/data* and */install/defs* from the CD to the *AIMInstallDir*. You should end up with:

- *AIMInstallDir/data*
- *AIMInstallDir/defs*

Note If you choose, you can limit the number of files you copy. Both the */data* and */defs* directories contain directories for each supported language. You can copy only the directories for the languages you are implementing.

5 Copy *whcomp.p* and *whcomp1.p* from */install/compile/os type*, where *os type* is either */unix* or */windows*, to *AIMInstallDir/us*.

6 Copy the contents of the */chr/aimsrc* directory from the CD to *AIMInstallDir/us/src*.

7 Copy the specific directory for your MFG/PRO version and service pack from the */chr/qadsrc* directory from the CD to *AIMInstallDir/us/spX*. For example, if you are running MFG/PRO eB2 Service Pack 5, you would end up with:

AIMInstallDir/us/sp5

8 To implement GUI clients for QAD Warehousing, repeat steps 2 through 7, creating a complete QAD Warehousing GUI installation parallel to *MFGPROInstallDir*. The only difference is the CD-ROM directories for steps 6 and 7 are */gui* instead of */chr*.

Important If you are installing Windows clients and want to run against UNIX databases, you must also have complete UNIX character interface QAD Warehousing and MFG/PRO installations to support the database.

Create the QAD Warehousing Empty Database

The *aimempty* database is used to compile additional languages and to create the production QAD Warehousing database. If you are implementing multiple languages, you must create an empty QAD Warehousing database for each language in order to compile the code for that language. If this is the case, name the empty databases accordingly: *aimUSEmpty*, *aimFRempty*, and so on.

The following steps use MFG/UTIL. This utility is installed with your MFG/PRO application.

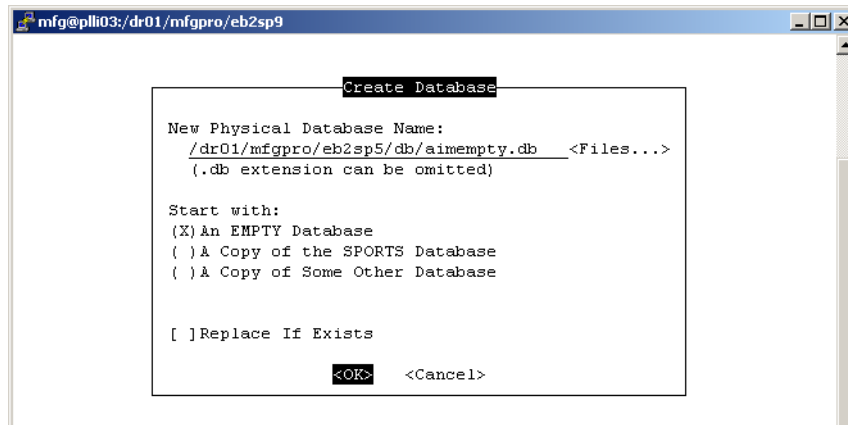
1 Launch MFG/UTIL from your *MFGPROInstallDir*.

For UNIX, run the command *./mfgutil*.

For Windows, select MFG/UTIL (Character) from your MFG/PRO database server icon in the Start menu.

2 Select Database|Create Database.

Fig. 1.2
Create the QAD Warehousing Empty Database



- 3 Enter `aimempty` and the full path to the `/db` directory as the new physical database name, start with an empty database, and choose OK. The new database is created.

Load Database Schema

The database schema files (`.df`) loaded in these steps contain the table, field, and index definitions for your QAD Warehousing database.

The QAD Warehousing database contains the Dataset field for use with Progress OE, which may cause a schema-load error when loading the database structure. To avoid this, use the following procedure before loading MFG/UTIL:

- 1 Using an editor such as Notepad or `vi`, create a plain text file containing the word `dataset`. For example:

```
$ vi ignore.lst
dataset
```

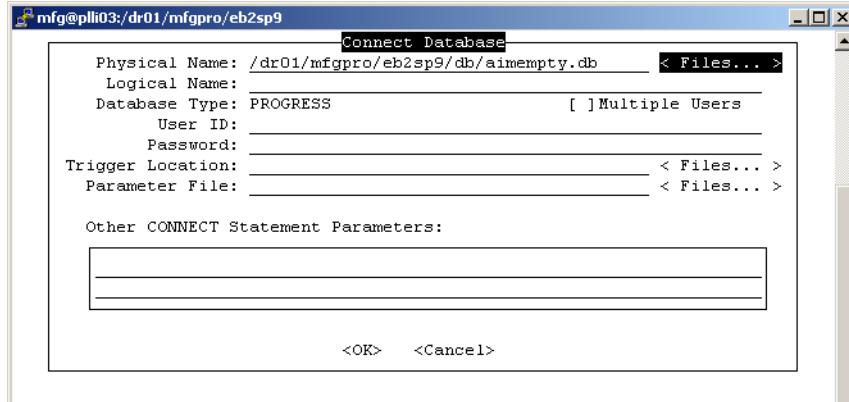
- 2 Add the `-k ignore.lst` parameter in the `mfgutil` file. This file is located in the root directory of your MFG/PRO installation. For example:

```
[mfg:/usr/qad/mfgpro/eB2.1] $ vi mfgutil
# execute mfgutil.p
cd /usr/qad/mfgpro/eB2.1
$DLC/bin/_progres -p /usr/qad/mfgpro/eB2.1/xmfgusrc/mfgutil.p -c 500 -s 63 -D 50 -TM 31
-TB 31 -B 1000 -yy 1920 -d mdy -ininame mfguprog.ini -k ignore.lst
```

To load the schema, use the following procedure:

- 1 MFG/UTIL, select Database|Load Database Schema (`.df`) File.
- 2 Connect to the `aimempty.db` and choose OK.

Fig. 1.3
Connect to the QAD Warehousing Database



- 3 The Data Definition File to Load screen displays. Enter the correct data definition file and path:
 - For US English, choose *AIMInstallDir/defs/aimusv9.df*.
 - For a language other than US English, choose *AIMInstallDir/defs/xx/aimxxv9.df* where *xx* is the language code.

Fig. 1.4
Load the QAD Warehousing Data Definitions



- 4 A load window displays. When the load is complete, choose Close to exit the load. You return to the data definition file load screen. Choose Close to exit.

Create Empty Databases for Additional Languages

To create a US English-only install, skip this section. To create a single-language and non-US English language install, you can also skip this section.

- 1 Repeat the steps in “Create the QAD Warehousing Empty Database” on page 6 for another empty database; for example, *aimFRempty.db*.
- 2 Repeat the steps in “Load Database Schema” on page 7 for the new empty database.

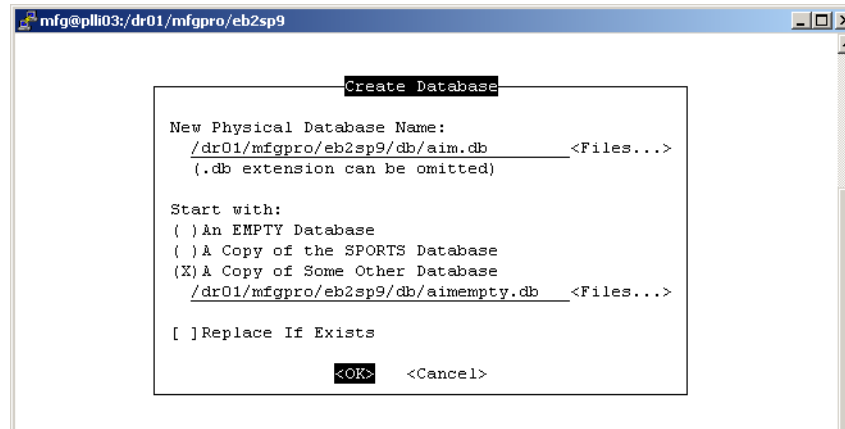
Repeat these three steps as often as needed to supply yourself with a new empty database for each language you are implementing.

Build the QAD Warehousing Production Database

These steps create a production database. Only one production QAD Warehousing database is required; all implemented languages are supported by the one database.

- 1 In MFG/UTIL select Database|Create Database.

Fig. 1.5
Create the QAD Warehousing Database



- 2 Enter `aim` and the full path to the `/db` directory as the new physical database name. Under Start With, select A Copy of Some Other Database. Use the Files button to browse for the correct language-specific empty QAD Warehousing database. For US English, this would be `aimempty.db`. Choose OK.
- 3 The new database is created.

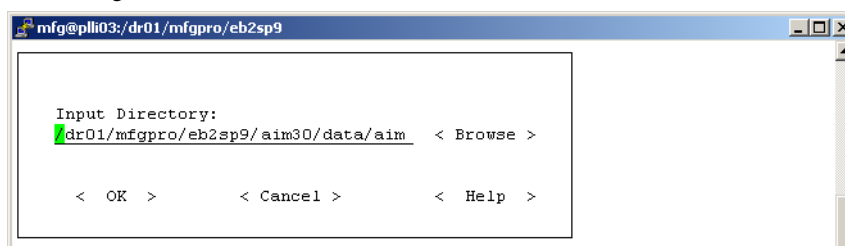
Load QAD Warehousing Data

Data must be loaded into MFG/PRO and QAD Warehousing databases through MFG/UTIL including `aim.db`, `mfgprod.db`, and `admprod.db`. The following steps walk you through the first connection and load. Table 1.3 on page 10 lists the other loads required and the source directories. Repeat these steps for each required load.

- 1 Choose Database|Load Data into Database.
- 2 Connect to `aim.db` and choose OK.
- 3 Enter the correct input directory:

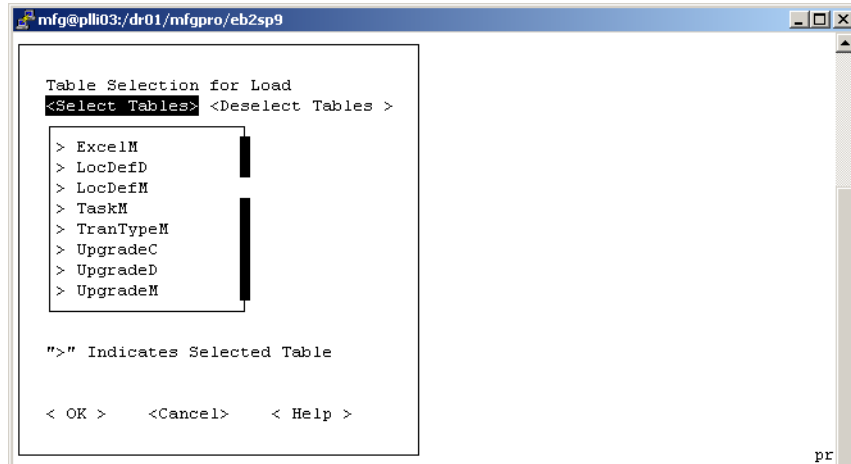
```
AIMInstallDir/data/aim
```

Fig. 1.6
Load the QAD Warehousing Default Data



4 When the tables display, make sure all are selected and choose OK.

Fig. 1.7
Select All Tables for Load



- 5 When the load is complete, press spacebar to close the window.
- 6 Repeat steps 1 through 5 to connect to the databases listed in Table 1.3 and to load data from the associated directories.

In the input directory names, replace /xx with the language code being loaded; for example /fr.

Important For additional languages, repeat the loads from the /xx directories for each language you are implementing, including /us.

Table 1.3
QAD Warehousing Data Loads and Directories

Database	Description	Input Directory
mfgprod	MFG/PRO production database	<i>AIMInstallDir</i> /data/mfg <i>AIMInstallDir</i> /data/mfg/xx
admprod	MFG/PRO admin database	<i>AIMInstallDir</i> /data/mfgadmin <i>AIMInstallDir</i> /data/mfgadmin/xx

Note You may get record already exists errors. These can safely be ignored.

Load MFG Definitions

When installing QAD Warehousing on languages other than US English, the mfgprod database must be loaded with schema labels for each language using MFG/UTIL. The following steps walk you through the first connection and load. Repeat these steps for the aim and admprod databases.

MFG/UTIL installs with your MFG/PRO application; however, MFGUTIL does not load labels for MFG/PRO eB2 and eB2.1 versions. So, even though you load the xdc_mstr files, provided with the QAD Warehousing CD, labels do not change.

To correct this, use the modified version of `utddlng.p`, provided in `install/mfgutil/` folder of the installation CD, to load the `xdc_mstr.d` file for non-English languages. You should verify that the new version is copied into the `.../mfgutil/xmfgusrc` directory and the `.../mfgutil/mfgusrc` directory, if it exists.

- 1 In MFG/UTIL select Database| Load Translated Labels.
- 2 Connect to `mfgprod` and choose OK. Be sure to turn on the Multiple Users flag for Multiple Users db.
- 3 Enter the correct input directory of the `xdc_mstr.d` file:

```
AIMInstallDir/defs/xx/xdc_mst.d
```

Where `xx` is the two-letter code for the language to be installed. For example, `jp` for Japanese. The schema labels are loaded for the language.

Compiling QAD Warehousing: UNIX

For Windows compiles, go to “Compiling QAD Warehousing: Windows” on page 14.

Prior to running QAD Warehousing under MFG/PRO, you must compile the QAD Warehousing code and several modified MFG/PRO programs specific to your release and service pack. Appropriate compile list files (`aim.wrk` and `qad.wrk`) are located in the MFG/PRO version and service-pack specific directories.

To compile for a language other than US, add the language directory, `/xx`, in your `PROPATH` where `xx` is the language code.

Before compiling, a compile script must be created.

Create UNIX Compile Script

Compiling under UNIX requires a script to launch Progress, connect to the required databases, and start the compile program. The example is called `aimcomp.sh` and resides in `MFGPROInstallDir`.

```
MFGDIR=/dr01/mfgpro/eb2sp9;export MFGDIR
AO<DIR=/dr01/mfgpro/AIM30;export AIMDIR
stty intr '^c'
DLC=/dr01/progress/dlc91e;export DLC
PATH=$PATH,$DLC;export PATH
PROMSGS=$DLC/promsgs;export PROMSGS
PROTERMCPAP=$WDLC/protermcap;export PROTERMCPAP
PROPATH=
.: $AIMDIR:$AIMDIR/us:$AIMDIR/us/src:$AIMDIR/us/sp5:$MFGDIR:$MFGDIR/us:$MFGDIR/xrc;export
PROPATH

cd $AIMDIR
exec $DLC/bin/_progres -inp 8192 -pf aim.pf;
```

Note Make sure to include the parameter `-inp 8192` in the `exec` line of the file.

Note For a language compile, you must also indicate the language code in the `PROPATH`, as in the following example for the French language:

```
PROPATH=
.: $AIMDIR:$AIMDIR/us:$AIMDIR/us/src:$AIMDIR/us/sp5:$MFGDIR:$MFGDIR/us:$MFGDIR/xrc:LANG
=FR;export PROPATH
```

Include the following directories in the `PROPATH` in the sequence shown:

```
AIMInstallDir
AIMInstallDir/us
AIMInstallDir/us/src
AIMInstallDir/us/SPlevel
MFGPROInstallDir
MFGPROInstallDir/us
MFGPROInstallDir/xrc
```

The `-pf` file lists the databases the script connects to; it must include the `aim` database. It also includes several connection parameters.

Create QAD `aim.pf` in `AIMInstallDir`.

```
-db mfgprod -ld qaddb -H plli03 -S eb2sp9prod-srv -trig triggers
-db aim-ld aimdb -H plli03 -S eb2sp9aim-srv -trig triggers
-db admprod -ld qadadm -H plli03 -S eb2sp9adm-srv -trig triggers
-db hlpprod -ld qadhelp -H plli03 -S eb2sp9hlp-srv
-cpstream ibm850 -cpinternal iso8859-1 -cprcodein iso8859-1
-cpcoll basic -inp 8192 -Bt 350 -c 30 -D 100 -mmax 3000 -nb 200 -s 96 -q -T /dr01/tmp -h 7
```

The logical database name for `aim.db` must be `aimdb`. The `-inp` parameter is required to increase the size allowed for individual lines of source code.

Important For additional language compiles, change the `.pf` file name to reflect the language you are compiling. The language-specific `.pf` file must reference the empty database loaded with the language-specific schema.

Fix qad.wrk Errors

There are two errors in the `qad.wrk` compile list. Following two of the file names, the letters `chr` appear.

- 1 Open `AIMInstallDir/us/qad.wrk` in a text editor.
- 2 Delete the two instances of `chr`.
- 3 Save and exit the file.

Compile Under UNIX

You run through a portion of these steps twice to compile both QAD Warehousing and modified MFG/PRO code.

- 1 In a UNIX session, navigate to `MFGPROInstallDir`.
- 2 Launch the script:

```
./aimcomp.sh
```
- 3 The Progress Editor displays.
- 4 Use File|Open to locate and open `AIMInstallDir/us/whcomp.p`.
- 5 Make the following changes:

`wk_home`. Enter the destination where the compiled code is saved. The slash at the end of the directory name is required. This should be `AIMInstallDir`.

wk_log. The name and location of the log file from the compile; for example, *AIM InstallDir/us/aimchr.001*.

wk_list. The name and location of the compile list. The files—*aim.wrk* and *qad.wrk*—are located in *AIMInstallDir/us*.

Important It is mandatory to compile the programs contained in the *qad.wrk* list against the same Database Set the MFG/PRO standard programs are compiled against. This avoids frame layout incompatibilities and other problems; *qad.wrk* contains standard MFG/PRO programs with changes to work with QAD Warehousing. The *aim.wrk* list can be compiled against other Database Set, as these are strictly QAD Warehousing programs (nonintrusive to MFG/PRO).

A portion of the file appears with sample changes in bold below.

```

/**SET DISPLAY TYPE**/
if session:display-type = "TTY" then
    assign wk_home = "/dr01/mfgpro/aim30/"
    wk_log = "/dr01/mfgpro/aim30/us/aimchr.001".
else
    assign wk_home = "../obj.p8/90a/gui/"
    wk_log = "../admin/install/compile/aimgui.res".

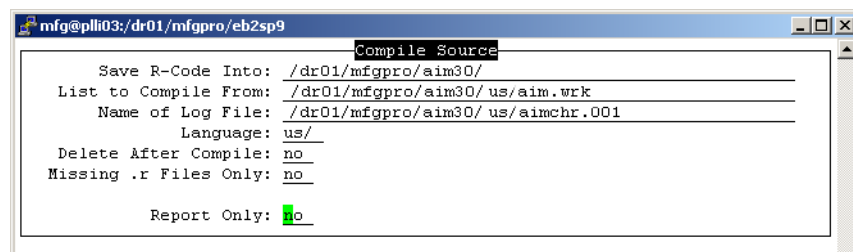
/**SET LANGUAGE**/
&IF index(propath,"LANG=fr") <> 0 &THEN
    wk_lang = "fr/".
&ELSEIF index(propath,"LANG=du") <> 0 &THEN
    wk_lang = "du/".
&ELSE
    wk_lang = "us/".
&ENDIF

assign wk_list = "/dr01/mfgpro/aim30/us/aim.wrk".

```

- 6 Save your changes.
- 7 Select Compile|Run from the Progress Editor menu. The QAD Warehousing compile screen displays. On the first pass, the values should be correct from your edit of the file in the previous steps. On the second pass, change *aim.wrk* to *qad.wrk*.

Fig. 1.8
QAD Warehousing Compiler



- 8 Press Go to launch the compile. A report window displays showing compile progress and error status.
- 9 When the compile is complete, press the spacebar to close the report window. The Progress session ends.
- 10 Repeat steps 2 through 9 for the *qad.wrk* compile list. Make sure to change *aim.wrk* to *qad.wrk* in List to Compile From in the Compile Source screen.
- 11 Repeat steps 2 through 9 for additional languages, making sure to edit the launch command in step 2 and the paths in step 7 to include the language-specific *.pf* file and paths.

- 12 Press the spacebar to end the session following the final compile.

Compiling QAD Warehousing: Windows

See “Compiling QAD Warehousing: UNIX” on page 11 for UNIX systems.

Prior to running QAD Warehousing under MFG/PRO, you must compile the QAD Warehousing code and several modified MFG/PRO programs specific to your release and service pack. Appropriate compile list files (`aim.wrk` and `qad.wrk`) are located in the MFG/PRO version and service-pack specific directories.

To compile for a language other than US, add the language directory, `\xx`, in your `PROPATH` where `xx` is the language code.

Before compiling, initialization files and scripts must be created or modified.

Modify Windows .ini and .pf Files

- 1 In `MFGPROInstallDir`, create a copy of `Production.ini` named `aimcomp.ini`.
- 2 Create a copy of `Production.pf` named `aimcomp.pf`.
- 3 Open `aimcomp.ini` in a text editor. Insert the following entries at the beginning of the `PROPATH` as a comma-separated list in the order shown:

```
\AIMInstallDir,
\AIMInstallDir\us,
\AIMInstallDir\us\src,
\AIMInstallDir\us\sp5,
\MFGPROInstallDir,
\MFGPROInstallDir\us
\MFGPROInstallDir\xrc
```

For Windows, update both the [Startup] and [WincharStartup] section `PROPATH`.

- 4 Save your changes.
- 5 If you are planning to compile additional languages, edit each `.ini` file `PROPATH` as described in steps 3 and 4; for example, `aimFRcomp.ini`.
- 6 Open `aimcomp.pf` in a text editor. Add the AIM database as shown.

```
-db e:\mfgpro\eb2sp5\db\mfgprod -ld qaddb -trig triggers
-db e:\mfgpro\eb2sp5\db\admprod -ld qadadm -trig triggers
-db e:\mfgpro\eb2sp5\db\hlpprod -ld qadhelp
-db e:\mfgpro\eb2sp5\db\aim.db -ld aimdb -trig triggers
```

- 7 Save your changes

Compile Under Windows

- 1 Launch a command session and navigate to `AIMInstallDir\us`.
- 2 Run the following command:

```
%DLC%\bin\_progres.exe -inp 8192
-pf MFGPROInstallDir\aimcomp.pf
-ininame MFGPROInstallDir\aimcomp.ini
```

The command contents are:

%DLC%\bin_progres.exe. The Progress executable that launches the Progress session.

-inp 8192. A parameter to increase the size allowed for individual lines of code.

-pf MFGPROInstallDir\aimcomp.pf. The set of databases started and connected during this Progress session.

-ininame MFGPROInstallDir\aimcomp.ini. The initialization file for the Progress session, including screen colors, PROPATH, and so on.

Important For additional language compiles, change the .pf and .ini file names to those you created for the language you are compiling. The .pf file must reference the empty database loaded with the language-specific schema.

3 The Progress Editor displays.

4 Use File|Open to locate and open *AIMInstallDir/us/whcomp.p*.

5 Make the following changes:

wk_home. This is the compile destination where the r-code is saved. The slash at the end of the directory name is required. This should be *AIMInstallDir*.

wk_log. The name and location of the log file from the compile; for example, *AIMInstallDir/us/aimchr.001*.

wk_list. The name and location of the compile list. The files—*aim.wrk* and *qad.wrk*—are located in *AIMInstallDir/us*.

Important It is mandatory to compile the programs contained in the *qad.wrk* list against the same Database Set the MFG/PRO standard programs are compiled against. This avoids frame layout incompatibilities and other problems; *qad.wrk* contains standard MFG/PRO programs with changes to work with QAD Warehousing. The *aim.wrk* list can be compiled against other Database Set, as these are strictly QAD Warehousing programs (nonintrusive to MFG/PRO).

A portion of the file appears with sample changes in bold below.

```

/**SET DISPLAY TYPE**/
if session:display-type = "TTY" then
    assign wk_home = "c:\mfgpro\aim30\"
        wk_log = "c:\mfgpro\aim30\us\aimchr.001".
else
    assign wk_home = "../obj.p8/90a/gui/"
        wk_log = "../admin/install/compile/aimgui.res".

/**SET LANGUAGE**/
&IF index(propath,"LANG=fr") <> 0 &THEN
    wk_lang = "fr/".
&ELSEIF index(propath,"LANG=du") <> 0 &THEN
    wk_lang = "du/".
&ELSE
    wk_lang = "us/".
&ENDIF

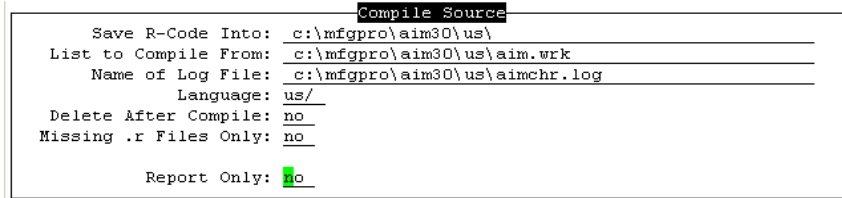
assign wk_list = "c:\mfgpro\aim30\us\aim.wrk".

```

6 Save your changes.

- 7 Select Compile|Run from the Progress Editor menu. The QAD Warehousing compile screen displays. On the first pass, the values should be correct from your edit of the file in the previous steps. On the second pass, change `aim.wrk` to `qad.wrk`.

Fig. 1.9
QAD Warehousing Compiler



- 8 Press Go to launch the compile. A report window displays showing compile progress and error status.
- 9 When the compile is complete, press the spacebar to close the report window. The QAD Warehousing Compiler redisplay.
- 10 Repeat steps 7 through 9 for `qad.wrk`.
- 11 Repeat steps 2 through 9 for additional languages, making sure to edit the launch command in step 2 to include the language-specific `.pf` and `.ini` files.
- 12 Press Exit to exit the compiler. You enter the Progress Editor. Access the menus and choose File|Exit to close the editor.

Creating a Launch Script

After the compile, copy `client.Production` for UNIX, or `ClientProduction.bat` for Windows, and modify them to enable the scripts to launch QAD Warehousing. Alternately, for UNIX, you can copy or modify `aimcomp.sh`.

- 1 Copy the appropriate script for your operating system:

OS	File Name	Copy to:
UNIX	<code>client.Production</code>	<code>client.AIM</code>
Windows	<code>clientProduction.bat</code>	<code>clientAIM.bat</code>

- 2 Open the new copy in a text editor.
- 3 At the `-p` argument, change the run program from `mf.p` to `cpdmf.p`.
- 4 Modify the `-pf` argument to call `aimcomp.pf`.
- 5 Radio Frequency (RF) Terminals are supported on character clients. In addition, to run an RF session, the following lines must be added to the `-ini` file for Windows and set as variables in UNIX.

See “Setting OS Variables” in the Radio Frequency (RF) Terminals chapter in *User Guide: QAD Warehousing* for version 3.1.

```
AIMSystemCode=RF;export AIMSystemCode
AIMShortMsg=YES;export AIMShortMsg
AIMSelectType=select-b;export AIMSelectType
```

For example, in the UNIX script:

```

MFGDIR=/dr01/mfgpro/eb2sp9;export MFGDIR
AIMDIR=/dr01/mfgpro/AIM30;export MFGDIR
AIMSystemCode=RF;export AIMSystemCode
AIMShortMsg=YES;export AIMShortMsg
AIMSelectType=B;export AIMSelectType
stty intr '^c'
DLC=/dr01/progress/dlc91e;export DLC
PATH=$PATH,$DLC;export PATH
PROMSGS=$DLC/promsgs;export PROMSGS
PROTERMCAAP=$DLC/protermcap;export PROTERMCAAP
PROPATH=
.:$AIMDIR:$AIMDIR/us:$AIMDIR/us/src:$AIMDIR/us/sp5:$MFGDIR:$MFGDIR/us:$MFGDIR/xrc;export
PROPATH

$DLC/bin/_progres -inp 8192 -c 30 -d mdy -yy 1920 -Bt 350 -D 100 -mmax 3000 -nb 200 -s
63 -noshvarfix -p cpdmf.p -pf /dr01/mfgpro/eb2sp9/prodAIM.pf

```

Note Make sure to include the parameter `-inp 8192` in the program execution line that starts `$DLC/bin/_progres`. Also, QAD recommends that you set the stack size as 128. So, you can include the `-s 128` parameter.

6 Save the file.

Updating Help

Important Updates to QAD Warehousing help exist only in the character-client help.

The online help database is character only. You can load online help data at any time after you create your databases.

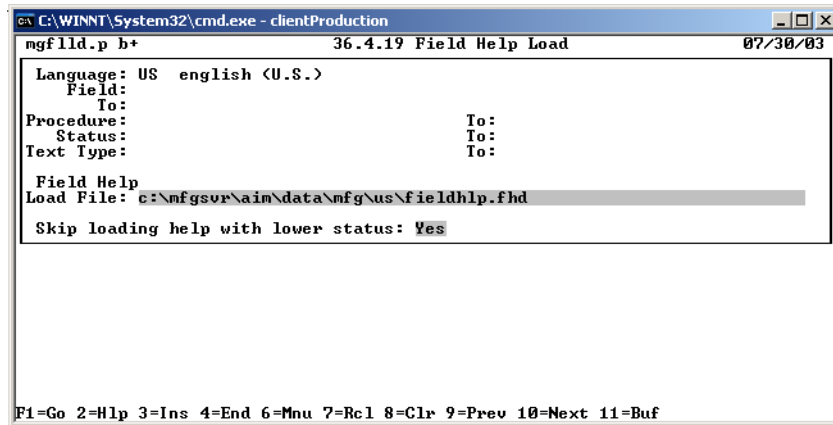
- 1 Launch MFG/PRO.
- 2 From the MFG/PROMain Menu, open Field Help Load (36.4.19).
- 3 In the Language field, enter the code of the language that you are loading help for and press Enter.

Note QAD Warehousing ships only English help. The language code is `us`.

- 4 Skip to Field Help Load File, leaving all other fields blank, and enter the two-letter language code directory followed by the name of the help file, which is always `fieldhlp.fhd`. In the QAD Warehousing installation, the file is located in:

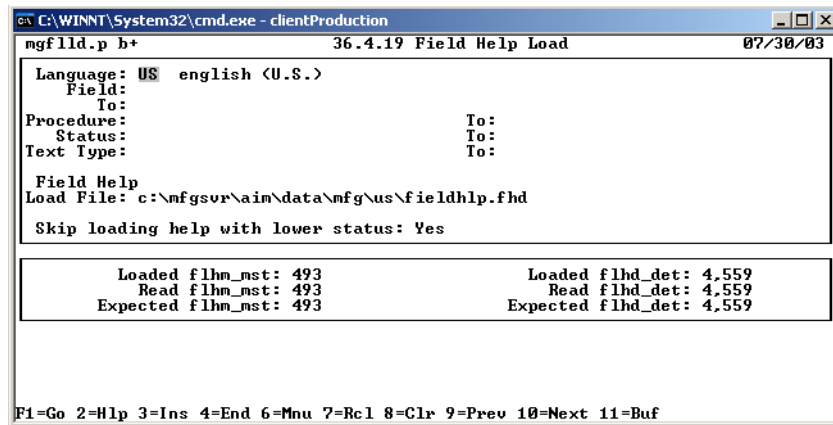
```
AIMInstallDir/data/mfg/us/fieldhlp.fhd
```

Fig. 1.10
Field Help Load in MFG/PRO



- 5 Accept the default values in all other fields and press Go to begin the load process. As the load proceeds, the number of records that have been read and loaded displays at the bottom of the screen. On completion, the screen should look like Figure 1.11.

Fig. 1.11
Field Help Load Completion Screen

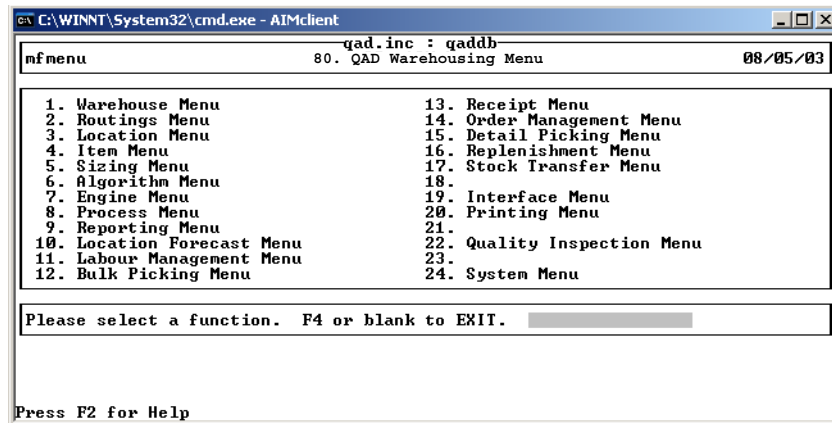


Starting QAD Warehousing

Start QAD Warehousing by launching the modified .bat or .sh file created under “Creating a Launch Script” on page 16.

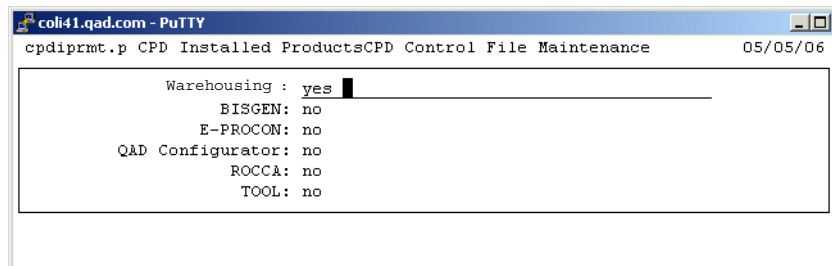
Once MFG/PRO starts, enter menu 80 in the character client, or locate QAD Warehousing on the Custom menu in GUI.

Fig. 1.12
QAD Warehousing Main Menu



- 6 Navigate to Installed Products, CPD Control File Maintenance (80.24.21.19).

Fig. 1.13
CPD Control File Maintenance



- 7 Set QAD Warehousing to Yes.

See *User Guide: QAD Warehousing* for version 3.1 for additional information on starting and using QAD Warehousing.

Language Settings

For languages other than US English, you must set the labels to be translated in MFG/PRO.

- 1 From the Main Menu, open Language Code Maintenance (36.4.1).
- 2 In the Language field, enter us.
- 3 Skip to Field Directory, and enter the two-letter language code directory you have installed. For example, jp for Japanese.
- 4 Press F4 to exit the program.
- 5 From the Main Menu, open Label Control (36.4.17.24).
- 6 Set Field Translate Frames to Yes.

Upgrading QAD Warehousing

This chapter provides information on upgrading an earlier version of QAD Warehousing to the current version.

Upgrade Overview 22

Updating the MFG/PRO Service Pack Level 22

Upgrading the QAD Warehousing Version 22

Updating Help 27

Upgrade Overview

This upgrade chapter supports the conversion of all previously released versions of QAD Warehousing to the current version, QAD Warehousing 3.1. The previously released versions are QAD Warehousing 2.0, 2.1b, 2.1c, 2.2a, 2.3a, 2.3b, 2.3d, and 3.0 (through version 3.0.9). Database changes in this sequence were introduced in version 2.2a and version 3.0.

Four delta `.df` files are provided containing the database changes. All upgrades require one of these files.

In addition, this chapter includes instructions for updating your QAD Warehousing installation when you upgrade your MFG/PRO service pack level.

Note If you are upgrading your version of Progress from 9.x to OpenEdge 10, you must also add a parameter to the client startup script.

Updating the MFG/PRO Service Pack Level

If you upgrade your MFG/PRO service pack level, you must also upgrade your QAD Warehousing installation. The examples in this section reflect an upgrade from eB2 service pack 5 to eB2 service pack 9; replace these releases with the eB2.1 releases appropriate to your upgrade.

- 1 If your existing QAD Warehousing media does not contain the MFG/PRO version and service pack level in `AIM/chr/qadsrc`, contact QAD to obtain QAD Warehousing media that includes the MFG/PRO version and service pack level.
- 2 Create a service pack directory in `AIMInstallDir/us`:


```
AIMInstallDir/us/sp9
```
- 3 Copy the specific directory for your MFG/PRO version and service pack from the `/chr/qadsrc` directory from the CD to `AIMInstallDir/us/sp9`.
- 4 Copy the new `qad.wrk` for your MFG/PRO version and service pack from the `/chr/qadsrc` directory from the CD to `AIMInstallDir/us`.
- 5 Modify `MFGPROInstallDir/aimcomp.sh` to reflect the new `PROPATH`.


```
AIMDIR=/dr01/mfgpro/aim30;export AIMDIR
PROPATH=
.: $AIMDIR:$AIMDIR/us:$AIMDIR/us/src:$AIMDIR/us/sp9:$MFGDIR:$MFGDIR/us:$MFGDIR/xrc;export
PROPATH
```
- 6 Compile only the new `qad.wrk` using the instructions in “Compile Under UNIX” on page 12 or “Compile Under Windows” on page 14.
- 7 This completes the QAD Warehousing update. No database changes are required.

Upgrading the QAD Warehousing Version

This section describes the steps required to upgrade to a new version of QAD Warehousing.

Prior to Starting

Before starting the upgrade, complete the following steps:

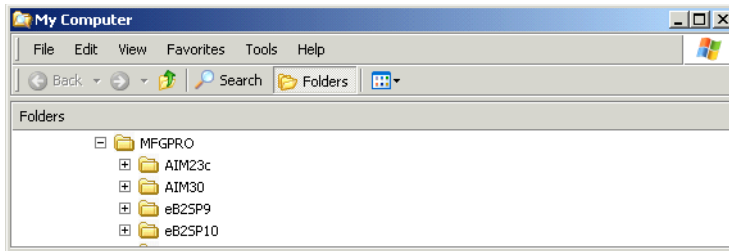
- Shut down your QAD Warehousing production system.
- Back up your existing QAD Warehousing database.

Install New QAD Warehousing Media

Follow the instructions in “Install QAD Warehousing Files” on page 5. Make sure your new *AIMInstallDir* is parallel to both *MFGPROInstallDir* and your existing *AIMInstallDir*.

Fig. 2.1

New QAD Warehousing Directory for AIM30



Update Existing QAD aimempty

The `aimempty` database from your prior release should already exist in your QAD Warehousing environment. For all versions prior to QAD Warehousing 2.3a, you must load the language-specific delta `.df` file.

Note If you are supporting multiple languages, you must repeat these steps for each language-specific empty database.

Load Schema Updates

Complete these steps for all upgrades.

- 1 In MFG/UTIL, select Load Database Schema (.df) File from the Database menu.
- 2 In the Connect Database screen, enter the empty database name and location. Choose OK.
- 3 In the Enter Data Definition File to Load screen, use the Browse button to navigate to the appropriate delta schema definition file, located in *AIMInstallDir/defs/*.
 - If you are upgrading from 3.0.4 or 3.0.5 version:
 - For US English, choose `deltaaimus304.df`.
 - For a language other than US English, choose `xx/deltaaimxx304.df` where `xx` is the language code.
 - If you are upgrading from 3.0.6 version:
 - For US English, choose `deltaaimus306.df`.
 - For a language other than US English, choose `xx/deltaaimxx306.df` where `xx` is the language code.
 - If you are upgrading from 3.0.7 version:
 - For US English, choose `deltaaimus307.df`.

- For a language other than US English, choose `xx/deltaaimxx307.df` where `xx` is the language code.
 - If you are upgrading from 2.3a or a more recent version:
 - For US English, choose `deltaaimV9.df`.
 - For a language other than US English, choose `xx/deltaaimxxV9.df` where `xx` is the language code.
 - If you are upgrading from 2.2a or an earlier version:
 - For US English, choose `deltaaimusprev22a.df`.
 - For a language other than US English, choose `xx/deltaaimxxprev22a.df` where `xx` is the language code.
- 4 Choose OK.
 - 5 A log window displays and shows load progress. When the load completes, choose OK to close the window.
 - 6 Repeat these steps for each empty language-specific QAD Warehousing database.

Compile Upgraded QAD Warehousing Version

For a more detailed set of compile steps, see the section “Compiling QAD Warehousing: UNIX” on page 11 or “Compiling QAD Warehousing: Windows” on page 14.

Compile New Code

For additional language compiles, change the `.pf` file name to one you created for the language you are compiling. This `.pf` file must reference the empty database loaded with the language-specific schema.

- 1 Open your `aimcomp.sh` (UNIX) or `aimcomp.ini` (Windows) file and modify the paths in the file to reflect the new QAD Warehousing installation path.

```
AIMDIR=/dr01/mfgpro/aim30;export AIMDIR
PROPATH=
.: $AIMDIR:$AIMDIR/us:$AIMDIR/us/src:$AIMDIR/us/sp9:$MFGDIR:$MFGDIR/us:$MFGDIR/xrc;export PROPATH
```

- 2 Create the target `/triggers` directory for the compile:

```
AIMInstallDir/triggers
```

- 3 Launch a command session and for UNIX navigate to `MFGPROInstallDir` and run `aimcomp.sh`:

```
./aimcomp.sh
```

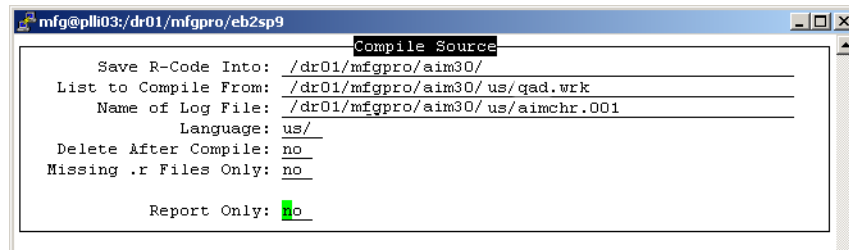
For Windows, navigate to `MFGPROInstallDir` and run:

```
%DLC%\bin\_progres.exe -inp 8192 -pf aimcomp.pf -ininame aimcomp.ini
```

- 4 The Progress Editor displays.
- 5 Use File|Open to locate and open `AIMInstallDir/us/whcomp.p`.

- 6 Select Compile|Run from the Progress Editor menu. The QAD Warehousing compile screen displays. Modify the paths as necessary. Make sure the List to Compile From references *AIMInstallDir/us/qad.wrk*.

Fig. 2.2
QAD Warehousing Compiler



- 7 Press Go to launch the compile. A report window displays showing compile progress and error status.
- 8 When the compile is complete, press the spacebar to close the report window. The Progress session ends.
- 9 Repeat steps 3 through 8 for additional languages, making sure to edit the launch command in step 3 to include the language-specific *.pf* and *.ini* files.

Update the QAD Warehousing Production Database

Though you have loaded the schema changes into the empty databases, you must load them into the production database as well. Then you run a conversion utility and load new administrative data such as new messages and field values into the QAD Warehousing database, as well as into *mfgprod* and *mfgadmin*.

Load Schema Updates

Complete these steps for all versions prior to QAD Warehousing 2.3a.

- 1 In MFG/UTIL, select Load Database Schema (.df) File from the Database menu.
- 2 In the Connect Database screen, enter the production database name and location. Choose OK.
- 3 In the Enter Data Definition File to Load screen, use the Browse button to navigate to the appropriate delta schema definition file.
- 4 In the Enter Data Definition File to Load screen, use the Browse button to navigate to the appropriate delta schema definition file, located in *AIMInstallDir/defs/*.
 - If you are upgrading from 3.0.4 or 3.0.5 version:
 - For US English, choose *deltaaimus304.df*.
 - For a language other than US English, choose *xx/deltaaimxx304.df* where *xx* is the language code.
 - If you are upgrading from 3.0.6 version:
 - For US English, choose *deltaaimus306.df*.

- For a language other than US English, choose `xx/deltaaimxx306.df` where `xx` is the language code.
 - If you are upgrading from 3.0.7 version:
 - For US English, choose `deltaaimus307.df`.
 - For a language other than US English, choose `xx/deltaaimxx307.df` where `xx` is the language code.
 - If you are upgrading from 2.3a or a more recent version:
 - For a US English production database, choose `deltaaimusv9.df`.
 - For a production database with a language other than US English, choose `xx/deltaaimxxv9.df` where `xx` is the language code.
 - If you are upgrading from 2.2a or an earlier version:
 - For a US English production database, choose `deltaaimusprev22a.df`.
 - For a production database with a language other than US English, choose `xx/deltaaimxxprev22a.df` where `xx` is the language code.
- 5 Choose OK.
 - 6 A log window displays and shows load progress. When the load completes, choose OK to close the window.

Run Conversion Utility

- 1 Copy the contents of `/install/conv` from the CD to the `AIMInstallDir`.
- 2 From the Progress Editor, run:
`AIMInstallDir/conv/whutmig3.p`
- 3 Quit from the Progress editor.

Load Data Updates

Complete these steps for all previous versions.

Note During the data load, errors display for already existing records. This is normal; you can safely ignore the messages.

- 1 In MFG/UTIL, select Load System Data into Database from the Database menu.

Important If your MFG/PRO version is eB2.1 Service Pack 4, you *must* use MFG/UTIL to avoid errors related to missing OID (object identifiers) fields. Do not use Progress utilities.

- 2 In the Connect Database screen, enter the QAD Warehousing production database name and location. Choose OK.
- 3 A log window displays to confirm the connection. Choose Close.
- 4 In the Load Data Contents screen, use the Browse button to navigate to `AIMInstallDir\data\aim`. Select any file in the directory and choose Open. Then choose OK in the Load Data Contents screen.

The mfgprod data files are in *AIMInstallDir\data\mfg* and in *AIMInstallDir\data\mfg\us*.

Note Do not load the `fieldhlp.fhd` file from MFG/UTIL. See the next section on updating help.

For admprod, go to *AIMInstallDir\data\mfgadmin* and *AIMInstallDir\data\mfgadmin\us*.

- 5 A list of tables in the directory is built and all tables with data updates are selected by default. Choose OK to start the load.
- 6 A log window displays to show progress. When the load completes, choose Close.

Note When performing an upgrade, the data files contain all data, not just deltas. Error files are generated for the data records that already exist in the database. These can be safely ignored.
- 7 Repeat steps 1 through 6 for your mfgprod and admprod databases, using the paths identified in step 4.
- 8 Repeat steps 1 through 6 for each additional language as well, loading only the language-specific data for mfgprod and admprod in step 4.

Updating Help

Help files were not updated for QAD Warehousing 3.1. However, if you want to be sure that you have the latest online help, you can load help data at any time after you create your databases. Updates to QAD Warehousing help exist only in the character-client help.

- 1 Launch MFG/PRO.
- 2 From the MFG/PROMain Menu, open Field Help Load (36.4.19).
- 3 In the Language field, enter the code of the language that you are loading help for and press Enter.

Note QAD Warehousing ships only English help. The language code is `us`.
- 4 Skip to Field Help Load File, leaving all other fields blank, and enter the two-letter language code directory followed by the name of the help file, which is always `fieldhlp.fhd`. In the QAD Warehousing installation, the file is located in:


```
AIMInstallDir\data/mfg/us/fieldhlp.fhd
```
- 5 Accept the default values in all other fields and press Go to begin the load process.

As the load proceeds, the number of records that have been read and loaded displays at the bottom of the screen.

Product Information Resources

QAD offers a number of online resources to help you get more information about using QAD products.

[QAD Forums \(community.qad.com\)](http://community.qad.com)

Ask questions and share information with other members of the user community, including QAD experts.

[QAD Knowledgebase \(knowledgebase.qad.com\)*](http://knowledgebase.qad.com)

Search for answers, tips, or solutions related to any QAD product or topic.

[QAD Document Library \(www.qad.com/documentlibrary\)](http://www.qad.com/documentlibrary)

Get browser-based access to user guides, release notes, training guides, and so on; use powerful search features to find the document you want, then read online, or download and print PDF.

[QAD Learning Center \(learning.qad.com\)*](http://learning.qad.com)

Visit QAD's one-stop destination for all courses and training materials.

*Log-in required

Index

A

- admprod 27
- admprod.db 9
- aim.db 9
- aim.wrk 4
- aimempty 23
- aimempty.db 7
- aimFRempty 6
- aimUsempty 6

C

- CD
 - installing 5
- CPD Control File Maintenance 19

D

- database
 - create 7
 - load data 9
 - load data definitions 8
- Dataset field, load error 7
- directories
 - compile 4
 - data 4

E

- empty databases
 - multiple languages 6
- error when loading schema 7

F

- Field Help Load 17, 27
- fieldhlp.fhd 17, 27

H

- help
 - language 17, 27
 - loading 17, 27

I

- installation
 - CD media 5

L

- languages
 - compiles 11, 14
 - empty database requirements 6
 - help 17, 27
 - supported 4
- load error 7

M

- MFG/UTIL 6
 - starting 5
- mfgprod 27
- mfgprod.db 9
- mount commands 5

P

- Progress
 - OpenEdge 10 3
- Progress OE, load error 7
- PROPATH 3
 - languages 11, 14

Q

- QAD Warehousing
 - Introduction to 1, 21
- qad.wrk 4

R

- radio frequency terminal (RF) 5

S

- schema load error 7
- scripts
 - MFG/UTIL 5

U

- upgrades
 - compiling 24
 - overview 22
 - schema updates 23
 - versions supported 22

