

*Industry-specific*

**QAD SOLUTIONS**

*Manufacturing Applications*

**Installation Guide  
MFG/PRO eB2.1 Service Pack 1**



MFG/PRO eB2.1  
December 2004

## Contents

|   |          |
|---|----------|
| <i>Overview</i>                                       | <b>2</b> |
| <i>Prior to Installation</i>                          | <b>4</b> |
| <i>Installing Database Server Files</i>               | <b>5</b> |
| <i>Loading Service Pack Data</i>                      | <b>7</b> |
| <i>Installing Host Clients or Client File Servers</i> | <b>9</b> |

## Overview

This document provides steps for installing Service Pack 1 (SP1) on MFG/PRO eB2.1. A base eB2.1 installation includes the latest service pack. Therefore, only those sites that have already installed eB2.1 should use these instructions to install the service pack.

If you plan to do a full reinstallation rather than just a service pack upgrade, refer to *MFG/PRO eB2.1 Installation Guide: Progress Database (78-0606C)*.

**Important** Prior to any install, visit the QAD Web site and download the latest Errata to make sure you have the latest installation information.

The service pack installation requires the following steps:

- Install database server and language media to the SP install directory.
- Process service pack data in MFG/UTIL.
- Install client media (character or GUI) to the SP install directory.
- Compile service pack files.

The process requires the following service pack CDs:

- Database Server
- Language Files
- Character Client, UNIX and Windows
- GUI Client, Windows

## Multiple Languages

If you are installing this service pack for multiple languages, the only difference is that you should complete all the media installs prior to loading data. The data load allows you to select the languages to load.

## Service Pack Information

The *Service Pack Release Notes* describe the changes to MFG/PRO eB2.1 introduced in each service pack since the initial MFG/PRO eB2.1 release. This cumulative document is available in HTML and PDF formats in the `spinfo\web\relnotes` directory on the client service pack CDs. Review the release notes in the `index.html` or `index.pdf` file to understand how changes may affect your current implementation.

Additional detailed service pack information is contained in HTML and ASCII text files located in subdirectories under the `/spinfo` directory on the client service pack CDs. The HTML files are located in the `/web` directory and the ASCII text files are located in the `/text` directory.

Service pack information contains the following elements:

*Module.* Provides information on each module and the files in that module that changed in the service pack.

*Menu.* Provides information on each menu and the files in that menu that changed in the service pack.

*ECOs.* Provides information on each Engineering Change Order (ECO) included in the service pack. This information includes a brief description of the ECO plus cross-references to the modified files, affected menus and modules, and the compiled files for that ECO.

*Modified Files.* Provides information on each file modified by the service pack. This information includes the changes that were made to the file plus cross-references to the ECO that caused the file to be modified, the affected menus and modules, and the entire file, to enable review of all changes in context.

*File Difference.* Provides information on each file modified by the service pack. This information includes the entire file with all of the changes in context and a list of the changes made to the file for specific ECOs.

*Compile List.* Provides a list of all the files that must be recompiled after the service pack has been installed. Additionally, provides cross-references to the modified file information for each file changed in the service pack. This file is located in the `/modlist` directory.

During the service pack installation, you can copy the service pack information to any directory you specify. When prompted whether to copy the service pack information, enter Yes, and indicate the destination directory for the information.

## Prior to Installation

This document assumes the person completing this installation has MFG/PRO installation experience and is proficient in the respective database for which the installation is being completed. In addition, you must meet all product and system requirements from the installation guide.

Installing a service pack creates files in the destination directory. When installing service packs, read and write permissions are required in all affected directories. Always install a new service pack to a separate directory; applying the service pack directly to your production environment may cause third-party products, customizations, localizations, and bolt-on applications to no longer function as expected.

**Important** If you have integrated third-party products, you should contact the product suppliers for compatibility issues with this service pack.

The cut-off date for a service pack can be found in the `version.mfg` file in the `mfgpro` directory on each service pack CD.

## Preliminary Setup

Prior to starting a service pack installation, back up your databases. QAD recommends you complete the service pack installation against a test environment first. By default, the eB2.1 service pack installs to a separate service pack directory beneath your original `MFGPROInstallDir`. Data deleted from MFG/PRO during the service pack install are preserved in dump files in the `MFGPROInstallDir\db` directory.

To restore your original environment, you would remove the service pack directory from the `PROPATH` and restore the databases from the backup.

Prior to install, review the following cautions and requirements:

- Set your `$TERM` variable to a standard terminal type such as `vt100` or `vt200` while installing the service pack. You can switch to a language-specific terminal if necessary when you launch the installed clients.
- Determine the following information:
  - The MFG/PRO installation directory where eB2.1 is installed, referred to in this document as `MFGPROInstallDir`
  - The Progress directory for the database server
- For UNIX environments, ensure the `mfg` user exists as defined in your MFG/PRO eB2.1 installation guide.

## Installing Database Server Files

In this set of steps, you install the service pack database server and language files.

- 1 Log in as an administrative user with read, write, and execute permissions for your MFG/PRO environment. On UNIX systems, this is typically `mfg`.

- 2 Mount the service pack database server installation media.

- 3 Change to the `install` directory:

```
cd install
```

- 4 Launch the database server installation script in that directory:

```
./install.ksh
```

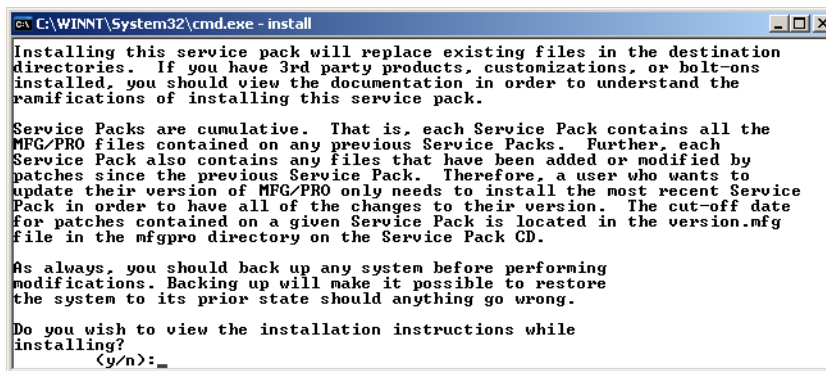
For Windows, run `install.exe` from Run on the Start menu.

- 5 Accept the license agreement.

- 6 Select the location for the service pack installation log. You should typically use the default directory, which is also the default for the original eB2.1 installation. This ensures subsequent installations can locate the log directory with all relevant eB2.1 install information.

If you select a directory other than the one you used for the original eB2.1 install, a warning displays that `install.ini` cannot be located. This is the file that is updated with eB2.1 install information.

- 7 A warning displays regarding third party products, service pack installs, and backing up your system. At the end, you are asked if you want to view the service pack installation instructions online.

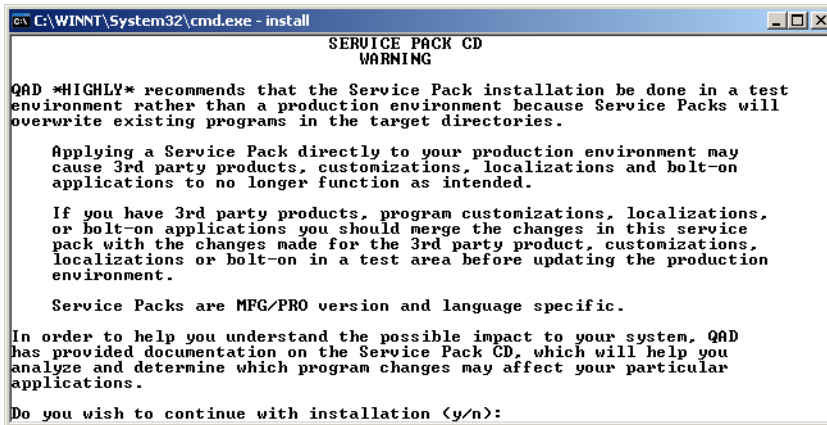


**Fig. 1**  
Service Pack Install  
Warning

- 8 If you choose Yes to view the service pack installation instructions online, your default browser launches and displays service pack and Q/LinQ warnings. Follow the links to the installation instructions.

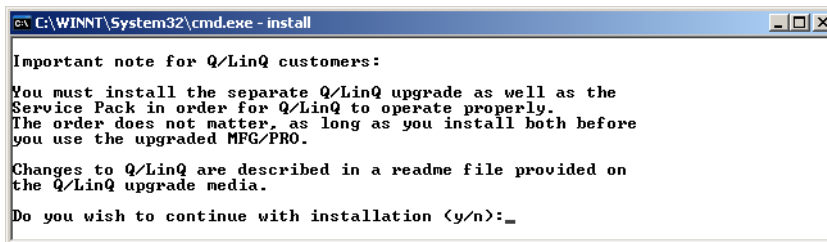
If you choose No, the warnings regarding the service pack CD and Q/LinQ display as text. Review each warning, enter Y, and press Enter to continue.

- 9 Another service pack install warning displays. Enter Y to continue.



**Fig. 2**  
Service Pack Install Warning

10 A Q/LinQ message displays. Enter Y to continue.

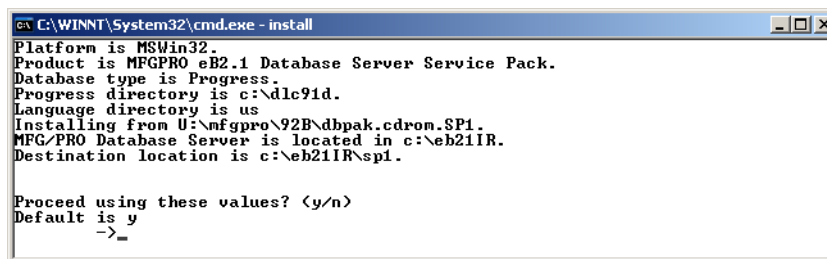


**Fig. 3**  
Q/LinQ Install Message

11 Respond to the following prompts:

- Progress installation directory
- Original MFG/PRO eB2.1 installation directory (*MFGPROInstallDir*)
- Service pack installation directory (*MFGPROInstallDir\SPx*)

12 Review the summary screen, Figure 4, and enter Y to begin copying the service pack files. Enter N to reenter installation information.



**Fig. 4**  
Database Server Install Summary for Service Pack 1

13 When the copy of the service pack to the server is complete, check `mfgdbsvsp.log` in your log directory.

14 Remove the database server media, insert your language file media, and repeat steps 3 through 13 to complete the language files installation for each language you are installing.

During the language files install, you are warned that files in the language directory may be overwritten. This is OK. Enter Y to continue.

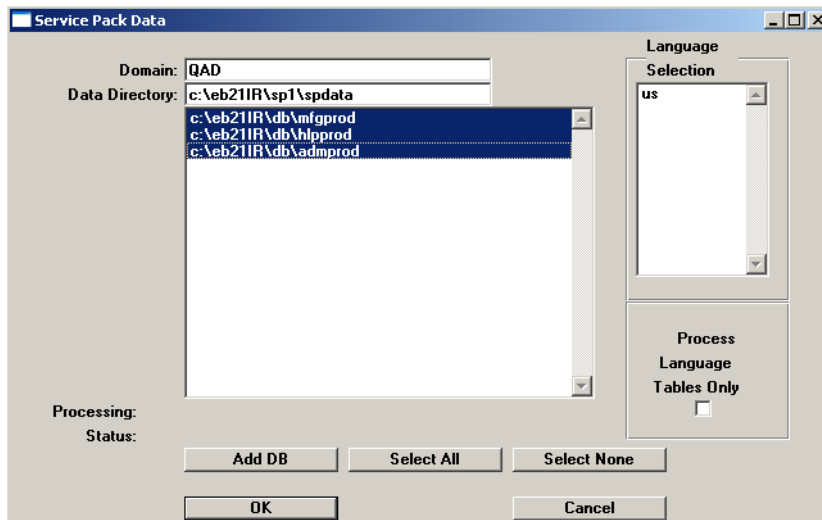
If you are installing in Windows, the warnings shown in Figure 2 and Figure 3 display again in a browser window that pops up.

- 15 Following the language files install, check `mfglangsp.log` for errors.

## Loading Service Pack Data

The following steps delete obsolete system data and load new data in your production databases.

- 1 Launch the MFG/PRO eB2.1 Database Server MFG/UTIL.
- 2 Select Service Pack Process from the Database menu. Then choose Process Service Pack Data. The Service Pack Data screen displays, Figure 5.



**Fig. 5**  
Service Pack Data  
Screen

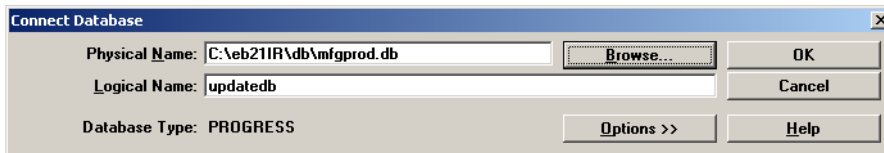
Your production databases including help and admin appear in the database list by default.

- 3 Enter a valid domain value for your production database, select the databases you want to load the data into, and press OK.

Most, if not all, system data shipped with an MFG/PRO release is system data and contains the qad domain. This is loaded to the system domain. The domain field in the Service Pack Data screen is used to load any non-system (for example, application) data where the domain is blank in the shipped data files, into the appropriate production domains. Therefore, if your production database contains multiple domains, repeat this step for each domain.

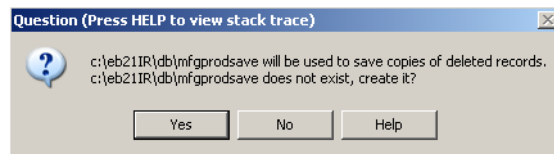
If you are loading only a language update because you ordered it later than the base language service pack, check Process Language Tables Only.

- 4 Select all production databases in the display. To add a database to the list, select Add DB.
- 5 Choose OK to start the process.
- 6 The Connect Database dialog displays for the first database update, Figure 6. Choose OK to start the updates.



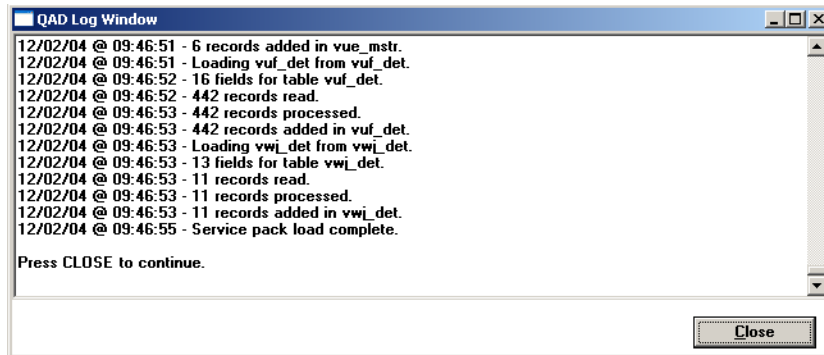
**Fig. 6**  
Connect Production Database

- 7 You are asked to confirm the creation of a directory for deleted records. Choose Yes to continue.



**Fig. 7**  
Backup Directory Prompt

- 8 The QAD Log Window displays showing update progress. On completion, the database is disconnected.
- 9 When the update of the production database is complete, you are prompted to connect to the h1pprod database. Choose OK to continue.
- 10 The Log Window informs you that you must “Connect to the database with the dom\_mstr table for updatedb.” This is your production database; by default mfgprod. Choose Close in the Log Window to continue.
- 11 The connect screen opens automatically. Browse for and select your production database. Choose Open to return to the connect screen. Choose OK to continue the updates.
- 12 You are asked again to confirm the creation of a directory for deleted records. Choose Yes to continue.
- 13 Repeat steps 9 through 12 for the admprod database.



**Fig. 8**  
Service Pack Load Complete

- 14 When all updates are complete, close the Log Window.

## Installing Host Clients or Client File Servers

On UNIX systems, the host client is the only installation required for UNIX character clients. All other UNIX clients connect to the host via telnet to run the client scripts.

On Windows, the first client installed, character or GUI, is called the file server because it contains the MFG/PRO eB2.1 source code. It is this client or file server where the code is compiled. Additional clients that connect to Windows file servers are called remote clients. The remote clients require no modifications for SP1.

- 1 Mount your service pack character or GUI client installation media.
- 2 On the CD, change to the directory containing the client.
- 3 Change to the `install` directory:  
`cd install`
- 4 Launch the database server installation script in that directory:  
`./install.ksh`  
For Windows, run `install.exe` from Run on the Start menu.
- 5 Accept the license agreement.
- 6 Enter the installation log location. A warning displays: see Figure 1 on page 5.
- 7 A second warning displays. See Figure 2 on page 6.
- 8 The Q/LinQ message displays. See Figure 3 on page 6.
- 9 You are asked if you want to copy the service pack information copied to your hard disk. Choose Y to copy, N to skip the copy.
- 10 Confirm the Progress installation directory.

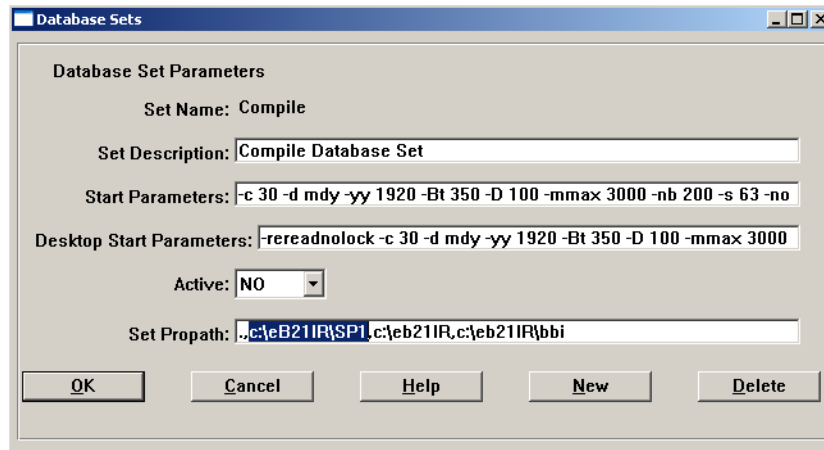
▶ See “Service Pack Information” on page 3.

- 11 Confirm the original MFG/PRO eB2.1 client installation directory (by default this is the same as the *MFGPROInstallDir*).
- 12 Confirm the service pack directory (a subdirectory within the client directory).
- 13 You are warned that files in the client directory may be overwritten. This is OK. Enter Y to continue.
- 14 Review the installation summary and press Enter to begin copying the files.
- 15 Following UNIX and Windows character installs, check *mfgchrclsp.log* for errors. For Windows GUI installs, check *mfgguiclsp.log*.

## Modify Database Sets and Scripts

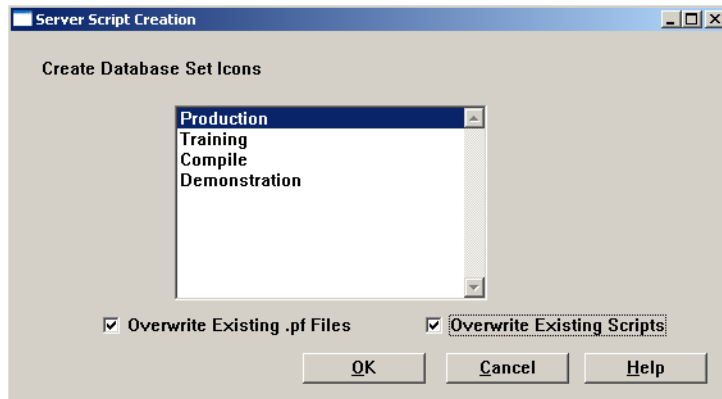
Use these steps to update your database sets to support compiles and to run the new service pack code with your production MFG/PRO databases.

- 1 In MFG/UTIL, select Configure|Database Set Maintenance.
- 2 Select a database set and choose Edit Set.
- 3 Modify the PROPATH for the set so that the new service pack directory appears first, Figure 9.



**Fig. 9**  
Database Set with  
Updated PROPATH

- 4 Repeat steps 2 and 3 for each database set.
- 5 Choose OK to save the changes and exit from Database Set Maintenance.
- 6 Select Scripts|Generate Scripts.
- 7 Select all database sets for which you need new scripts and choose OK. This should include the Production set at a minimum. Overwrite the existing files.



**Fig. 10**  
Generate Scripts  
Selections

**Note** The Compile set does not require scripts since it is never started. The compile set is connected to during compiles only.

- 8 Choose OK to generate the new scripts.
- 9 You are asked to confirm the creation.
- 10 On Windows systems, you are prompted for the folder location. Verify or modify the folder location and choose OK to continue.
- 11 The Log Window displays progress.



**Fig. 11**  
Script Generation  
Completion

- 12 When the scripts are complete, choose Close.

## Compile the Service Pack Code

The service pack must be compiled prior to launching MFG/PRO eB2.1.

- 1 In MFG/UTIL, select Programs|Compile Procedures.
- 2 Select the compile list, `utcompil.wrk`, from the following directory:

```
MFGPROInstallDir\

```

- 3 The Compile Propath should include `MFGPROInstallDir\ and MFGPROInstallDir\xrc.`

- 4 Set the compile destination to the service pack directory; for example: *MFGPROInstallDir\SP1*.

The completed Compile screen is shown in Figure 12.

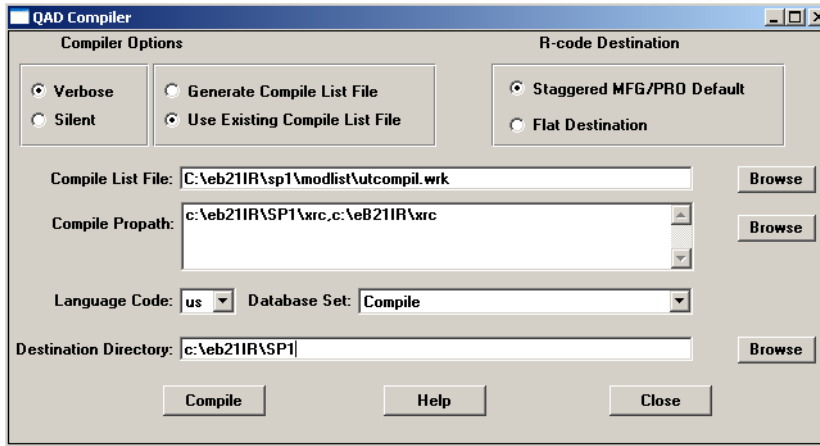


Fig. 12  
Compile  
Parameters for a  
Service Pack

- 5 Choose Compile. You are warned that the destination directory exists. Choose Yes to continue. You are also prompted to create the /ar directory, which is the first of the MFG/PRO module-based compile directories. Choose Yes.
- 6 A summary screen displays where you can modify the PROPATH if necessary. Choose Continue to start the compile. A progress screen and the QAD Log Window display.

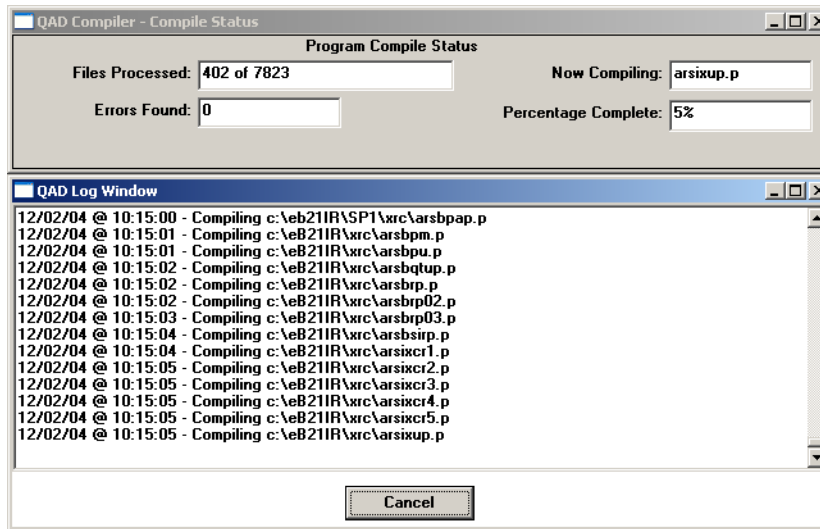


Fig. 13  
Compile Progress

- 7 When the compile is complete, check *mfgulog.log* for errors.

You can now launch MFG/PRO using the new scripts. When the welcome screen displays, verify that your new service pack level is shown.

Nothing is required to connect and use existing remote clients against the revised service pack environments.