

*Industry-specific*

**QAD SOLUTIONS**

*Manufacturing Applications*

**Installation Guide**  
**MFG/PRO eB2.1 Service Pack 2**



MFG/PRO eB2.1  
March 2005

## Contents

<i>Overview</i>	<b>2</b>
<i>Prior to Installation</i>	<b>5</b>
<i>Installing Service Pack 2 from Delivery Media</i>	<b>6</b>
<i>Installing Host Clients or Client File Servers</i>	<b>8</b>
<i>Modifying Database Structures</i>	<b>9</b>
<i>Updating the Empty Databases</i>	<b>11</b>
<i>Updating the Main Production Database</i>	<b>13</b>
<i>Loading Language Master Files</i>	<b>19</b>
<i>Updating the Help Database</i>	<b>20</b>

## Overview

This document provides steps for installing Service Pack 2 (SP2) on MFG/PRO eB2.1. A base eB2.1 installation includes the latest service pack. Therefore, only those sites that have already installed eB2.1 should use these instructions to install the service pack.

If you are currently on a prior eB2.1 service pack and plan to do a full reinstallation rather than just a service pack upgrade, refer to *MFG/PRO eB2.1 Installation Guide: Progress Database*.

**Important** Prior to any install, visit the QAD Web site and download the latest errata and service pack installation guide to make sure you have the latest installation information.

The service pack installation requires the following steps:

- Install database server and language media to the SP install directory.
- Install client media (character or GUI) to the SP install directory.
- Modify database structures to accommodate new storage areas.
- Update the empty databases and add an empty audit database for compiles.
- Update the main production database.
- Compile service pack files.

**Note** If you are installing the Enhanced Controls module, skip the service pack compile and complete the Enhanced Control install, which includes a separate compile. See *MFG/PRO eB2.1 Installation Guide: Enhanced Controls*.

The process requires the following service pack CDs:

- Database Server
- Language Files
- Character Client, UNIX and Windows
- GUI Client, Windows

## Multiple Languages

If you are installing this service pack for multiple languages, the only difference is that you should complete all the media installs prior to loading data. The data load allows you to select the languages to load.

## Service Pack Information

The *Service Pack Release Notes* describe the changes to MFG/PRO eB2.1 introduced in each service pack since the initial MFG/PRO eB2.1 release. This cumulative document is available in HTML and PDF formats in the `spinfo/web/relnotes` directory on the client service pack CDs. Review the release notes in the `index.html` or `index.pdf` file to understand how changes may affect your current implementation.

Additional detailed service pack information is contained in HTML and ASCII text files located in subdirectories under the `/spinfo` directory on the client service pack CDs. The HTML files are located in the `/web` directory and the ASCII text files are located in the `/text` directory.

Service pack information contains the following elements:

*Module.* Provides information on each module and the files in that module that changed in the service pack.

*Menu.* Provides information on each menu and the files in that menu that changed in the service pack.

*ECOs.* Provides information on each Engineering Change Order (ECO) included in the service pack. This information includes a brief description of the ECO plus cross-references to the modified files, affected menus and modules, and the compiled files for that ECO.

*Modified Files.* Provides information on each file modified by the service pack. This information includes the changes that were made to the file plus cross-references to the ECO that caused the file to be modified, the affected menus and modules, and the entire file, to enable review of all changes in context.

*File Difference.* Provides information on each file modified by the service pack. This information includes the entire file with all of the changes in context and a list of the changes made to the file for specific ECOs.

*Compile List.* Provides a list of all the files that must be recompiled after the service pack has been installed. Additionally, provides cross-references to the modified file information for each file changed in the service pack. This file is located in the `/modlist` directory.

During the service pack installation, you can copy the service pack information to any directory you specify. When prompted whether to copy the service pack information, enter Yes, and indicate the destination directory for the information.

## Standard Install Overview

Several steps have been added to each standard install with Service Pack 2. All installs must enter an OID generator code and create an empty audit database for compiles only.

With Service Pack 2, the optional Enhanced Controls module is also available. This module requires a separate install process. If you have purchased the Enhanced Controls module, then after you complete the service pack installation up to the compile, go to *MFG/PRO eB2.1 Installation Guide: Enhanced Controls* and complete the install through the compile in that guide.

## Creating an OID Generator Code

During a standard MFG/PRO installation, you must specify an OID generator code for each database. This code is used to create values that uniquely identify database records. If you are performing a conversion, the OID code is specified during the conversion process.

**Note** Currently, only some records take advantage of this new feature. However, it will be used more extensively in future QAD development.

You can choose any code that you want. However, Progress Software Corporation offers its customers the ability to register for unique site IDs so other companies will not use the same number, maintaining uniqueness world wide, and preventing data ID collisions for events such as corporate mergers.

QAD recommends that you obtain a code by registering each of your databases for a Dynamics Site Number from Progress Software Corporation. For details and registration, see the information at the following Progress sites:

<http://www.progress.com/dynamics/sitenumber>

[http://psdn.progress.com/library/docs/site\\_number\\_faq.pdf](http://psdn.progress.com/library/docs/site_number_faq.pdf)

In a multiple-database environment, you should obtain a reference ID for each database. Each `qaddb` database is assigned its own reference ID so that the ID values remain unique even when records are merged into one database.

The OID generator code is an alphanumeric value you enter during the install. It is used by MFG/PRO as the registration ID of the full OID value written to database records as they are created. The generator code is stored and displayed in Database Control (36.24) in MFG/PRO and can be modified later, if necessary.

Once the OID generator code has been specified, OID fields in the database are populated using an algorithm that ensures uniqueness across all records, tables, and MFG/PRO databases within the company. The value stored in the OID field for each record has the following decimal format:

```
<date><seq_value>.<registration_id>
```

Where:

<date> is the server date with format `yyyymmdd`.

<seq\_value> is obtained from a Progress database sequence.

<registration\_id> identifies the origin of the OID value.

The registration ID is derived from the OID generator code by reversing the digits of the generator code value and placing the decimal point in front of the result.

## Prior to Installation

This document assumes the person completing this installation has MFG/PRO installation experience and is proficient in the respective database for which the installation is being completed. In addition, you must meet all product and system requirements from the installation guide.

Installing a service pack creates files in the destination directory. When installing service packs, read and write permissions are required in all affected directories. Always install a new service pack to a separate directory; applying the service pack directly to your production environment may cause third-party products, customizations, localizations, and bolt-on applications to no longer function as expected.

**Important** If you have integrated third-party products, you should contact the product suppliers for compatibility issues with this service pack.

The cut-off date for a service pack can be found in the `version.mfg` file in the `mfgpro` directory on each service pack CD.

## Preliminary Setup

Prior to starting a service pack installation, back up your databases. QAD recommends you complete the service pack installation against a test environment first. By default, the eB2.1 service pack installs to a separate service pack directory beneath your original `MFGPROInstallDir`. Data deleted from MFG/PRO during the service pack install are preserved in dump files in the `MFGPROInstallDir\db` directory.

To restore your original environment, you would remove the service pack directory from the `PROPATH` and restore the databases from the backup.

Prior to install, review the following cautions and requirements:

- Set your `$TERM` variable to a standard terminal type such as `vt100` or `vt200` while installing the service pack. You can switch to a language-specific terminal if necessary when you launch the installed clients.
- Determine the following information:
  - The MFG/PRO installation directory where eB2.1 is installed, referred to in this document as *MFGPROInstallDir*
  - The Progress directory for the database server
- For UNIX environments, ensure the `mfg` user exists as defined in your MFG/PRO eB2.1 installation guide.

## Installing Service Pack 2 from Delivery Media

In this set of steps, you install the service pack database server and language files.

- 1 Log in as an administrative user with read, write, and execute permissions for your MFG/PRO environment. On UNIX systems, this is typically `mfg`.
- 2 Mount the service pack database server installation media.
- 3 Change to the `install` directory:

```
cd install
```
- 4 Launch the database server installation script in that directory:

```
./install.ksh
```

For Windows, run `install.exe` from Run on the Start menu.
- 5 Accept the license agreement.
- 6 Select the location for the service pack installation log. You should typically use the default directory, which is also the default for the original eB2.1 installation. This ensures subsequent installations can locate the log directory with all relevant eB2.1 install information.
- 7 A warning displays about third-party products and customizations. After the warning, you are then asked if you want to view the service pack install instructions during the install.

```

C:\WINNT\System32\cmd.exe - install
Please enter location where the log file should be written.
Default is c:\instlog
->

Installing this service pack will replace existing files in the destination
directories. If you have 3rd party products, customizations, or bolt-ons
installed, you should view the documentation in order to understand the
ramifications of installing this service pack.

Service Packs are cumulative. That is, each Service Pack contains all the
MFG/PRO files contained on any previous Service Packs. Further, each
Service Pack also contains any files that have been added or modified by
patches since the previous Service Pack. Therefore, a user who wants to
update their version of MFG/PRO only needs to install the most recent Service
Pack in order to have all of the changes to their version. The cut-off date
for patches contained on a given Service Pack is located in the version.mfg
file in the mfgpro directory on the Service Pack CD.

As always, you should back up any system before performing
modifications. Backing up will make it possible to restore
the system to its prior state should anything go wrong.

Do you wish to view the installation instructions while
installing?
(y/n):

```

**Fig. 1**  
Service Pack  
Installation  
Warning

- 8 If you choose Yes to view the service pack installation instructions online, your default browser launches and displays service pack and Q/LinQ warnings. Follow the links to the installation instructions.

If you choose No, the warnings regarding the service pack CD and Q/LinQ display as text. Review each warning, enter Y, and press Enter to continue.

- 9 Respond to the following prompts:
- Progress installation directory
  - Original MFG/PRO eB2.1 installation directory (*MFGPROInstallDir*)
  - Service pack installation directory (*MFGPROInstallDir\SPx*)
- 10 Review the summary screen, Figure 2, and enter *y* to begin copying the service pack files. Enter *n* to re-enter installation information.

```

C:\WINNT\System32\cmd.exe - install
Platform is MSWin32.
Product is MFGPRO eB2.1 Database Server Service Pack.
Database type is Progress.
Progress directory is C:\dlc91d.
Language directory is us
Installing from U:\mfgpro\92B\dbpak.cdrom.
MFG/PRO Database Server is located in e:\eb21.
Destination location is e:\eb21\sp2.

Proceed using these values? (y/n)
Default is y
->_

```

**Fig. 2**  
Database Server  
Install Summary for  
Service Pack 2

- 11 The copy progress displays in the command window. When the copy of the service pack to the server is complete, check *mfgdbsvsp.log* in your log directory.

- 12 Remove the database server media, insert your language file media, and repeat steps 3 through 11 to complete the language files installation for each language you are installing.

During the language files install, you are warned that files in the service pack directory may be overwritten. This is OK. Enter Y to continue.

- 13 Following the language files install, check `mfglangsp.log` for errors.

## Installing Host Clients or Client File Servers

On UNIX systems, the host client is the only installation required for UNIX character clients. All other UNIX clients connect to the host via telnet to run the client scripts.

On Windows, the first client installed—character or GUI—is called the file server because it contains the MFG/PRO eB2.1 source code. It is this client or file server where the code is compiled. Additional clients that connect to Windows file servers are called remote clients. The remote clients require no modifications for SP2.

- 1 Mount your service pack character or GUI client installation media.

- 2 On the CD, change to the directory containing the client.

- 3 Change to the `install` directory:

```
cd install
```

- 4 Launch the database server installation script in that directory:

```
./install.ksh
```

For Windows, run `install.exe` from Run on the Start menu.

- 5 Accept the license agreement and follow the prompts:

- Installation log location
- Progress installation directory
- Original MFG/PRO eB2.1 client installation directory (by default, the same as the `MFGPROInstallDir`)
- Service pack directory (a subdirectory within the client directory)

You are warned that files in the client directory may be overwritten. This is OK. Enter Y to continue.

- 6 Review the installation summary and press Enter to begin copying the files.

- 7 Following UNIX and Windows character installs, check `mfgchrclsp.log` for errors. For Windows GUI installs, check `mfgguiclsp.log`.

## Modifying Database Structures

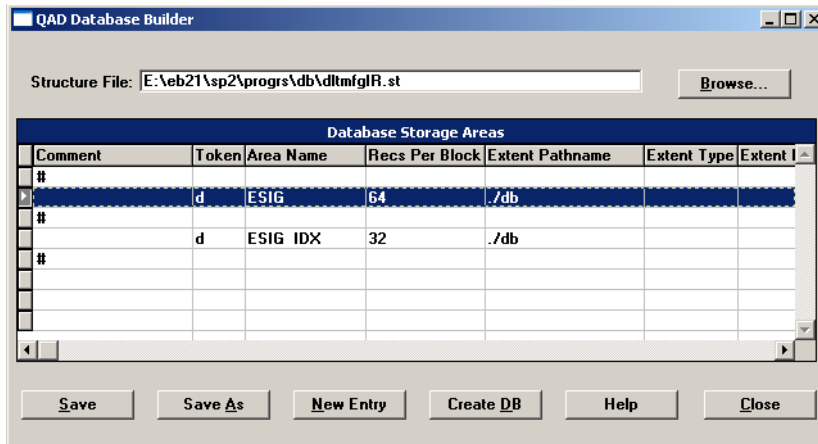
New storage areas have been added to the main production and empty databases. If these are not added to your empty and production databases prior to performing the data definition loads in later steps, the loads will fail. You first modify the delta structure that was shipped with your service pack. You then run a Progress utility to make the changes to the databases.

### Modify the Delta Structure Files

- 1 Launch MFG/UTIL on your MFG/PRO database server.
- 2 Select Edit Structure File/Create Database from the Database menu. The Edit Structure File screen displays.
- 3 Use the Browse button to locate the appropriate delta structure file for your release. By default, the files are located in *MFGPROInstallDir\SPx\progrs\db* where *x* is the service pack number. Select OK to open the file.

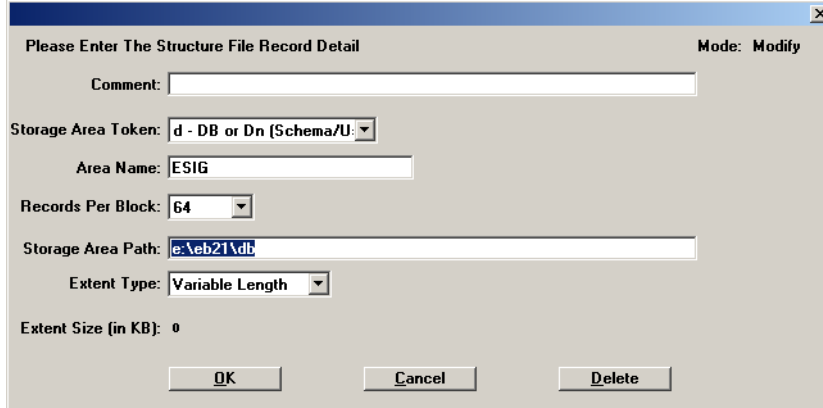
Installed Version and Service Pack	Delta .st File to Open
eB2.1 Initial Release	dltmfgIR.st
eB2.1 Service Pack 1	dltmfgSP1.st

**Table 1**  
Delta .st Files By Source Version



**Fig. 3**  
Delta .st File Opened for Editing

- 4 Tab to or select the first storage area listed. In Figure 3, the first area is selected, and is named ESIG. Double-click or press Enter to open the storage area definition.
- 5 In the storage area definition, modify the Storage Area Path value to point to the target databases. This is typically *MFGPROInstallDir\db*. Choose OK to save the change and return to the editor screen.



Please Enter The Structure File Record Detail Mode: Modify

Comment:

Storage Area Token:

Area Name:

Records Per Block:

Storage Area Path:

Extent Type:

Extent Size (in KB): 0

**Fig. 4**  
Storage Area  
Definition Editor

- 6 Repeat steps 4 and 5 for each storage area in the .st file.
- 7 When you have modified all storage area paths, choose Save to save the file, and then OK to exit the editor.

## Update the Database Structures

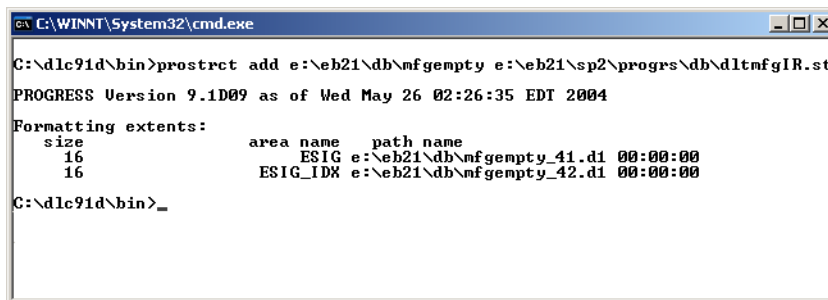
- 1 Open a command window and navigate to *MFGPROInstallDir*.
- 2 Use the following syntax to add the new storage areas to the required databases.

```
prostrct add dbname delta-st-file-name
```

For example:

```
e:\dlc91d\bin\prostrct add .\db\mfgempty e:\eb21\sp2\progrs\db\dltmfgIR.st
e:\eb21\sp2\progrs\db\dltmfgIR.st
```

If the update is successful, the result displays.



```
C:\WINNT\System32\cmd.exe
C:\dlc91d\bin>prostrct add e:\eb21\db\mfgempty e:\eb21\sp2\progrs\db\dltmfgIR.st
PROGRESS Version 9.1D09 as of Wed May 26 02:26:35 EDT 2004
Formatting extents:
  size      area name  path name
  16         ESIG      e:\eb21\db\mfgempty_41.d1 00:00:00
  16         ESIG_IDX  e:\eb21\db\mfgempty_42.d1 00:00:00
C:\dlc91d\bin>_
```

**Fig. 5**  
Successful prostrct  
Update for  
mfgempty

- 3 Repeat step 2 for your main production database, *mfgprod*, and any other main databases you are upgrading. These may include *mfgdemo*, *mfgtrain*, *chicago*, and so forth.

## Updating the Empty Databases

Using an MFG/UTIL workflow, the following steps create an empty audit database and update the schema in the main empty database, `mfgempty`. The empty audit database is required for all implementations for compiles even if you do not implement the Enhanced Controls module.

**Important** Prior to starting the empty database updates, copy `audempty.st` and `audempty.df` from `MFGPROInstallDir\SPX\progrs\db` to `MFGPROInstallDir\db`. This ensures the database is created in the correct location.

- 1 Launch MFG/UTIL on your MFG/PRO database server.
- 2 Select MFG/PRO Guided Setup from the Configure menu. The Operation Sets screen displays.
- 3 In the Operation Set field, select Update Empty Databases. The set steps display. Choose Run Set.

**Note** This workflow is controlled by `wk0100.ini` in `MFGPROInstallDir`. You may want to edit this workflow in a text editor to better reflect your path environment, or to modify a task status from Done to Not Run in the event of an error.

### Create the Audit Database

- 1 The QAD Database Builder screen displays showing a default QAD empty structure file, `audempty.st`. The default path is not correct. Choose Browse and select `audempty.st` from `MFGPROInstallDir\db`.  
Generally, you do not need to edit this file for the empty databases. Choose Create DB.
- 2 In the Create/Copy Database screen, verify that Progress Empty is selected and accept the defaults in the New Database and DB Block Size fields.
- 3 Choose OK to build `audempty`.
- 4 When `audempty` is built, a log of the database build process displays. You can verify that the database was created successfully by checking:
  - `MFGPROInstallDir/audempty.log`
  - The storage area extents created in `MFGPROInstallDir/db`
- 5 Choose Close to exit the log window.
- 6 The QAD Database Builder for `audempty` displays again, this time with the Close button selected. Choose Close to complete the creation of `audempty`.

- After you close the QAD Database Builder screen, the Connect Database screen displays for `audempty`. Accept the defaults and choose OK to connect to `audempty`. Use Table 2 as a guide.

Field	Value
Physical Name	Path to <code>audempty (/db/audempty.db)</code>
Logical Name	Logical database name ( <code>qadaud</code> )
All other fields	Leave blank

**Table 2**  
Connect Database Values for `audempty`

- The default data definition file, `audempty.df`, displays. The default path is not correct. Choose Browse and select `audempty.df` from `MFGPROInstallDir\db`. Choose OK to begin loading the database schema. The program first writes the schema to a buffer, then loads it into the database. The write displays a progress screen; the load process does not.
- The QAD Log Window displays. When the load completes, close the log window.
- The Truncate BI File screen displays. Accept the default path to `audempty` and choose Truncate.
- Close the QAD Database Monitor window that displays on completion.

### Update `mfgempty`

- After you close the QAD Database Monitor, the Connect Database screen displays for `mfgempty`. Accept the defaults and choose OK to connect.
- The Data Definitions File load screen displays. Choose Browse. Navigate to `MFGPROInstallDir\SPX\progrs\db` and select the appropriate delta `.df` file for your installation. The `.df` files do not need to be copied to your `MFGPROInstallDir\db` directory.

Installed Version and Service Pack	Delta <code>.df</code> File to Load
eB2.1 Initial Release	<code>dltmfgIR.df</code>
eB2.1 Service Pack 1	<code>dltmfgSP1.df</code>

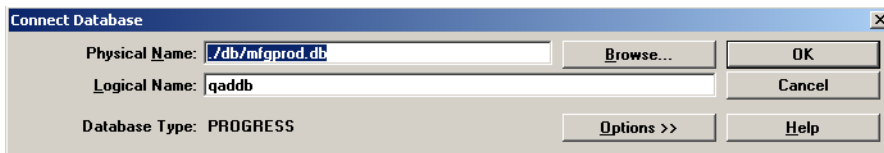
**Table 3**  
Delta `.df` Files By Source Version

- Choose OK to start the load.
- The QAD Log Window displays. When the load completes, choose Close.
- The Truncate BI File screen displays. Accept the default path to `mfgempty` and choose Truncate.
- Close the QAD Database Monitor window that displays on completion.

## Updating the Main Production Database

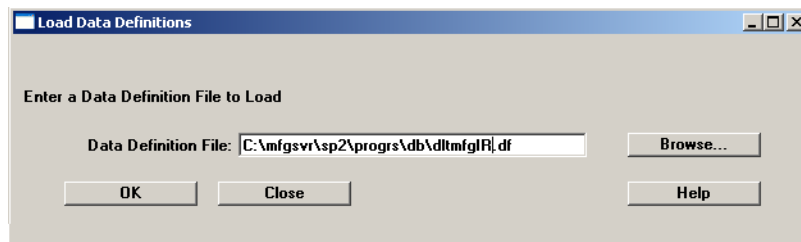
Using an MFG/UTIL workflow, the following steps update schema and data for the main production database:

- 1 In the MFG/PRO Guided Setup Operation Sets screen, select Update Production DBs. The set steps display. Choose Run Set.  
**Note** This workflow is controlled by `wk0110.ini` in `MFGPROInstallDir`. You may want to edit this workflow in a text editor to better reflect your path environment, or to modify a task status from Done to Not Run in the event of an error.
- 2 The Connect Database screen displays for `mfgprod`. Accept the defaults and choose OK to connect to `mfgprod`.



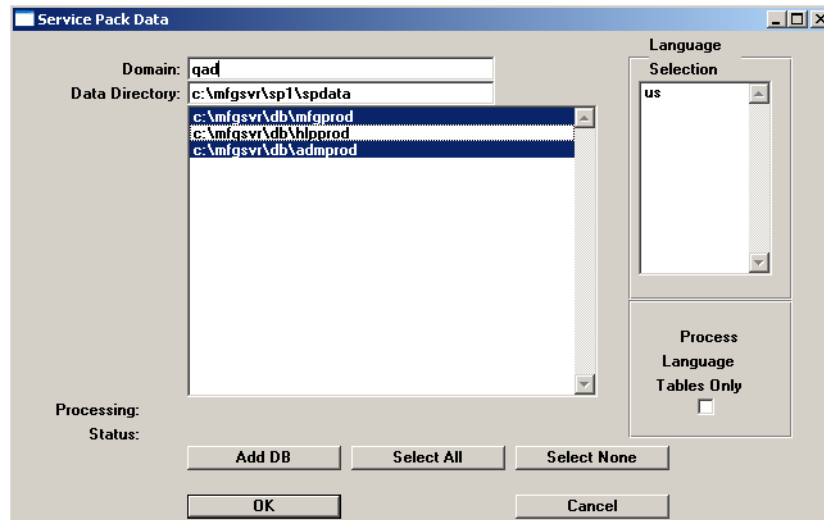
**Fig. 6**  
Connecting to  
mfgprod

- 3 The Load Data Definitions screen displays. Select Browse and locate `.df` files in `MFGPROInstallDir\sp#\progrs\db`. If you are upgrading from eB2.1 initial release, select `dltmfgIR.df`; if you are upgrading from eB2.1 SP1, select `dltmfgsp1.df`.



**Fig. 7**  
Loading Data  
Definitions for  
mfgprod

- 4 Choose OK to begin loading the database schema. The QAD Log Window displays and a progress screen. When the load completes, choose Close in the Log Window.
- 5 The Service Pack Data screen displays. Enter the QAD domain. Select the databases you want to load the data into, and press OK. For Service Pack 2, the help database has no data loads.



**Fig. 8**  
Service Pack Data  
Load Selection  
Screen

Most, if not all, system data shipped with an MFG/PRO release is system data and contains the qad domain. This is loaded to the system domain. The domain field in the Service Pack Data screen is used to load any non-system (for example, application) data where the domain is blank in the shipped data files, into the appropriate production domains. Therefore, if your production database contains multiple domains, repeat this step for each domain.

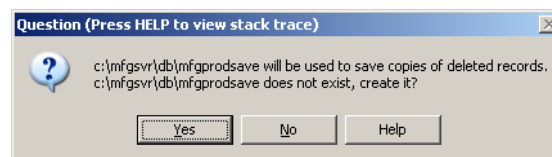
If you enter an invalid domain code, the QAD Log Window displays with the following error:

Skipping database c:\mfgsvr\db\mfgprod, invalid domain code.

If you are loading only a language update because you ordered it later than the base language service pack, check Process Language Tables Only.

Choose OK to start the load process.

- 6 The Connect Database screen displays for the first database selected. Accept the defaults to connect to the production database again. Choose OK.
- 7 You are asked to confirm the creation of a file named *dbnamesave* for deleted records. Choose Yes to continue.



**Fig. 9**  
File Create  
Confirmation

- 8 The QAD Log Window displays. Obsolete records are deleted and new records are added. When the load completes, choose Close to continue.
- 9 You are prompted to connect to the next database. Choose OK.



**Fig. 10**  
Connecting to  
admprod

- 10 The admin databases do not contain a domain master (`dom_mstr`) record. You must specify the associated production database that does contain a domain record in order for MFG/UTIL to validate it.

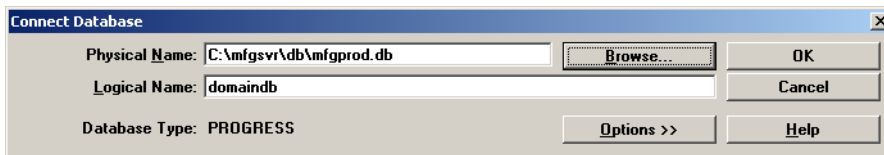
The QAD Log Window displays to inform you that:

`updatedb` does not have a `dom_mstr` table.

Please connect database with the `dom_mstr` table for `updatedb`

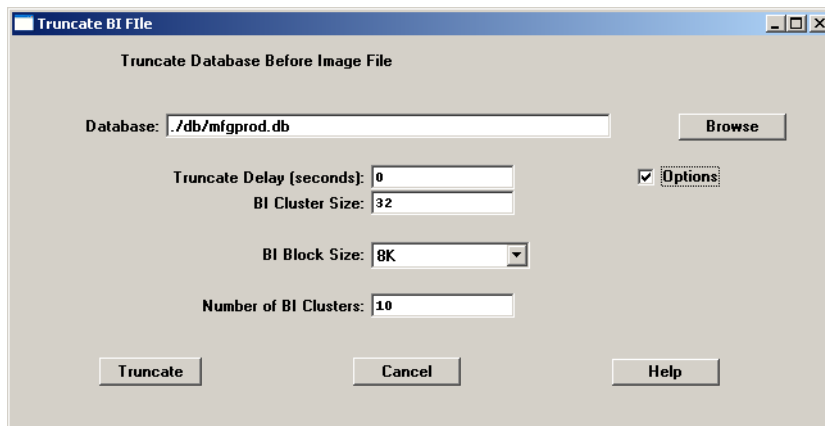
Choose Close to continue. The Connect Database screen displays with no physical name and a logical name of `domaindb`.

- 11 Choose Browse to locate the production database that contains the valid domain value you entered in step 5. Choose OK to continue the load.



**Fig. 11**  
Domain Database  
Connection for  
Admin Database  
Loads

- 12 You are asked to confirm the creation of a file named `dbnamesave` for deleted records. Choose Yes to continue.
- 13 The QAD Log Window displays. Obsolete records are deleted and new records are added. When the load completes, choose Close to continue.
- 14 The Truncate BI File screen now displays. Accept the default path to `mfgprod` and choose Truncate.



**Fig. 12**  
Truncating  
mfgprod

- 15 Close the QAD Database Monitor window that displays on completion.

## Additional Domain Updates

The previous set of steps loads service pack schema changes into your production databases and loads service pack data into all databases that share the identified domain. If you have additional databases that require service pack updates, reset the MFG/UTIL workflow and repeat the workflow for those databases. To do this:

- 1 Select Reset MFG/PRO Guided Setup Files from the Configure menu in MFG/UTIL.
- 2 Return to step 1 on page 13 and repeat the steps. This time, make sure the other databases are correctly identified in each connection screen.

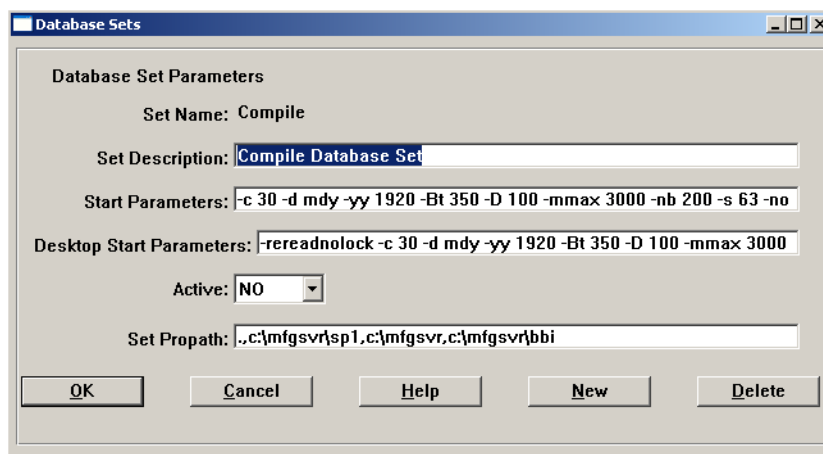
If you have additional domains in the production database you just finished with, do the following:

- 1 Select Database|Service Pack Process|Process Service Pack Data in MFG/UTIL.
- 2 Repeat steps 5 through 13 from “Updating the Main Production Database” on page 13. Enter the additional domain in step 5.
- 3 Repeat these steps for each additional domain.

## Modify Database Sets and Scripts

Use these steps to update your database sets to support compiles and to run the new service pack code with your production MFG/PRO databases.

- 1 In MFG/UTIL, select Configure|Database Set Maintenance.
- 2 Select a database set and choose Edit Set.
- 3 Modify the PROPATH for the set so that the new service pack directory appears first, Figure 13.



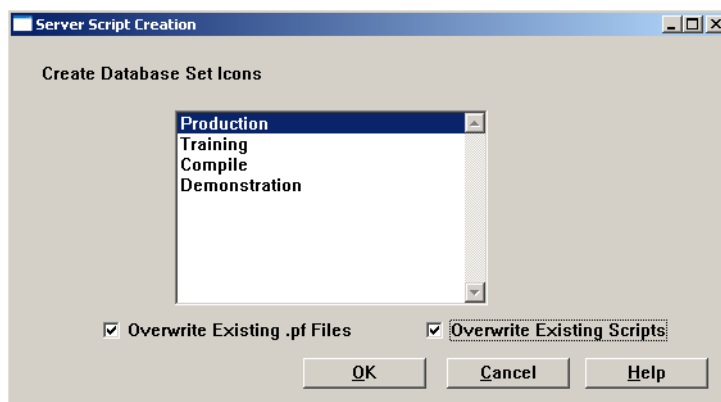
**Fig. 13**  
Database Set with  
Updated PROPATH

- 4 Repeat steps 2 and 3 for each database set.
- 5 For the Compile database set, add the `audempty` database. Make sure to enter connection parameters for the new database in the Edit Client screen. The correct parameters are:

```
-RO -trig triggers
```

**Important** This is a required step for all installations in order to compile, regardless of whether you are implementing Enhanced Controls.

- 6 Choose OK to save the changes and exit from Database Set Maintenance.
- 7 Select Scripts|Generate Scripts.
- 8 Select all database sets for which you need new scripts and choose OK. Overwrite the existing files.



**Fig. 14**  
Server Script  
Creation

**Note** The Compile set does not require scripts since it is never started. The compile set is connected to during compiles only.

- 9 Choose OK to generate the new scripts.
- 10 On Windows systems, you are prompted for the folder location. Verify or modify the folder location and choose OK to continue.
- 11 The Log Window displays progress. When the scripts are complete, choose Close.

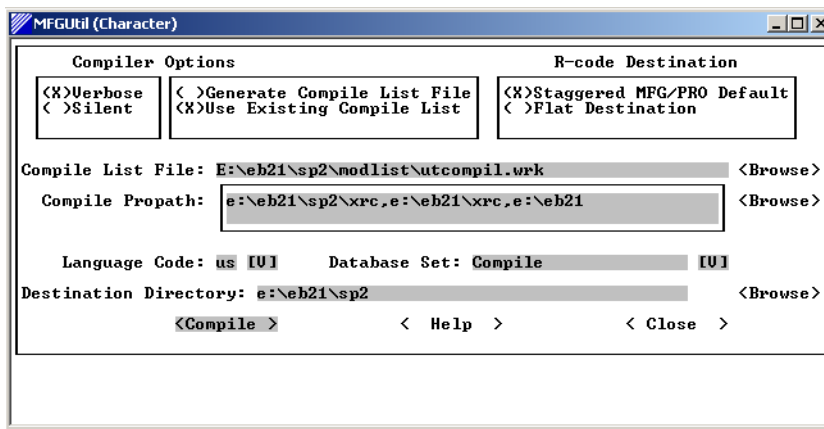
## Compile the Service Pack Code

**Important** For sites implementing Enhanced Controls, skip these compile steps. Complete the Enhanced Controls install as detailed in *MFG/PRO eB2.1 Installation Guide: Enhanced Controls*. Those instructions include the compile at the appropriate point.

The service pack must be compiled prior to launching MFG/PRO eB2.1.

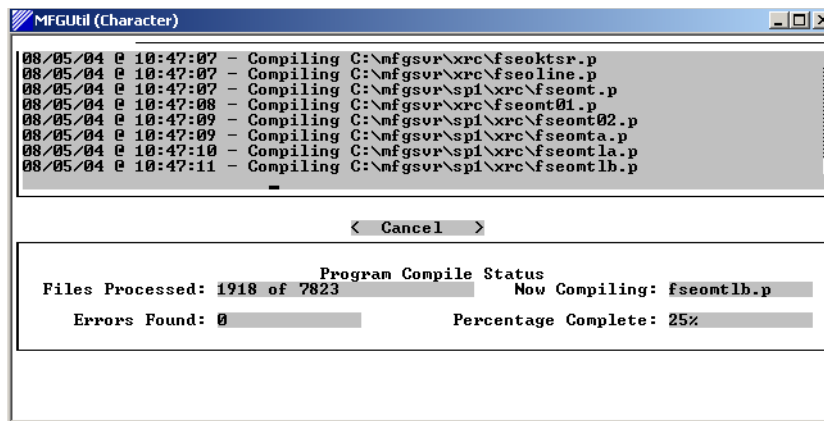
- 1 In MFG/UTIL, select Programs|Compile Procedures.
- 2 Select the compile list, `utcompil.wrk`, from the following directory:  
*MFGPROInstallDir\ServicePack#\modlist*
- 3 The Compile Propath should include *MFGPROInstallDir\ServicePack#\xrc* and *MFGPROInstallDir\xrc*.
- 4 Set the compile destination to the service pack directory; for example:  
*MFGPROInstallDir\SP2*.

The completed Compile screen is shown in Figure 15.



**Fig. 15**  
Compile Parameters for a Service Pack

- 5 Choose Compile. You are warned that the destination directory exists. Choose Yes to continue. You are also prompted to create the `/ar` directory, which is the first of the MFG/PRO module-based compile directories. Choose Yes.
- 6 A summary screen displays where you can modify the PROPATH if necessary. Choose Continue to start the compile. A progress screen displays, Figure 16.



**Fig. 16**  
Compile Progress

- 7 When the compile is complete, check `mfgulog.log` for errors.

You can now launch MFG/PRO using the new scripts. When the welcome screen displays, verify that your new service pack level is shown.

Nothing is required to connect and use existing remote clients against the revised service pack environments.

## Loading Language Master Files

For all languages other than English, an additional load and compile is required.

**Note** If you have customized any labels in your schema, or in `xdc_mstr` prior to loading it previously, these customizations may be over-written.

- 1 In MFG/UTIL, select Load Translated Labels from the Database menu.
- 2 You are asked to connect to a database. Select the `mfgempty` database.
- 3 You are then asked to locate an `xdc_mstr` file to load. By default, these are located in `MFGPROInstallDir\SP2\XX` where `XX` is the two-letter language code. There are two `xdc_` files in each `SP2\XX` directory: an incremental update since the initial release and a complete `xdc_mstr` for the language. Select the appropriate file, or the full `xdc_mstr` if you are uncertain, and choose OK.
- 4 A log window opens and the load begins. An output file is written to `xdc.err` in `MFGPROInstallDir`.

**Important** Due to a known program error, the load process may hang indefinitely. This occurs after a successful load, but before program sign-off. If the load on your system takes longer than five minutes, close the log window to end the process. No harm will be done to the files or database.

- 5 After the load into `mfgempty`, repeat steps 1 through 4 for `admempty`, and then again for `audempty`.
- 6 Following the loads, freeze the databases again using the Freeze/Unfreeze program in the Progress Database Administration tool.
- 7 When the databases are all refrozen, open Compile Programs from the Programs menu in MFG/UTIL.
- 8 Browse to locate the `utcompil.wrk` file located in `MFGPROInstallDir\SP2\XX` where `XX` is the two-letter language code.
- 9 Connect to the compile database set.
- 10 The PROPATH should be as follows:

`MFGPROInstallDir\sp2\xrc,MFGPROInstallDir\xrc,MFGPROInstallDir`

- 11 Choose Compile. You are warned that the destination directory exists. Choose Yes to continue.
- 12 A summary screen displays where you can modify the PROPATH if necessary. Choose Continue to start the compile. A progress screen displays.
- 13 When the compile is complete, choose Close in the log window and check `mfgulog.log` for errors.

You can now launch MFG/PRO using the new scripts. When the welcome screen displays, verify that your new service pack level is shown.

## Updating the Help Database

To include help updates for the Kanban and Electronic Signature programs, load `sp_help.fhd`. Use the following steps:

- 1 Launch MFG/PRO.
- 2 Go to Field Help Load (36.4.19).
- 3 In the Language field, enter the MFG/PRO language code of the language that you are loading help for and press Enter.
- 4 Skip to Field Help Load File, leaving all other fields blank, and enter the two-letter language code directory followed by the name of the help file. For example, for U.S. English, enter `SP2/us/sp_help.fhd`.
- 5 Accept the default values in all other fields.
- 6 Press Go to begin the load process.  
As the load proceeds, the number of records that have been read and loaded displays at the bottom of the screen.
- 7 Load help for any other languages in your environment using the appropriate language code and help file.

## Access Revised Help Information

Updated help is available in character mode only. If your configuration includes Windows GUI clients, perform these additional steps to make the character-based help viewable from those clients:

- 1 Open User Maintenance (36.3.1).
- 2 For each user accessing the new functions, set WinHelp to No.
- 3 Press Go to save the changes.