

*Industry-specific*

**QAD SOLUTIONS**

*Manufacturing Applications*

**Installation Guide  
Advanced Pricing Management  
(APM) Medical**

**UNIX Server and Windows Clients**



78-0613A  
APM Medical 2.3M04, 2.4M04, and 2.4M05  
January 2005

This document contains proprietary information that is protected by copyright. No part of this document may be reproduced, translated, or modified without the prior written consent of QAD Inc. The information contained in this document is subject to change without notice.

QAD Inc. provides this material as is and makes no warranty of any kind, expressed or implied, including, but not limited to, the implied warranties of merchantability and fitness for a particular purpose. QAD Inc. shall not be liable for errors contained herein or for incidental or consequential damages (including lost profits) in connection with the furnishing, performance, or use of this material whether based on warranty, contract, or other legal theory.

QAD and MFG/PRO are registered trademarks of QAD Inc. The QAD logo is a trademark of QAD Inc.

Designations used by other companies to distinguish their products are often claimed as trademarks. In this document, the product names appear in initial capital or all capital letters. Contact the appropriate companies for more information regarding trademarks and registration.

Copyright ©2005 by QAD Inc.  
78-0613A

**QAD Inc.**

6450 Via Real

Carpinteria, California 93013

Phone (805) 684-6614

Fax (805) 684-1890

<http://www.qad.com>

# Contents

<b>About This Guide</b> .....	<b>1</b>
What Is in This Guide? .....	2
Installation Errata .....	2
APM Medical Documentation .....	2
Online Help .....	3
QAD Web Site .....	3
Typographic Conventions .....	4
<b>Chapter 1 Introduction</b> .....	<b>5</b>
MFG/PRO and APM Medical .....	6
Installation Overview .....	6
Prior to Installation .....	6
Database Server Installation .....	6
Windows File Server Installation .....	7
Windows Client PC Setup .....	7
Completing the Installation .....	7
APM Medical Databases .....	7
Minimum Requirements .....	8
Database Server .....	8
Windows File Server and Clients .....	8
Installation Utility .....	9
Keyboard Commands .....	9
Log Files .....	10

**Chapter 2 Setting Up the Database Server . . . . . 11**

- Load APM Medical from Tape Media . . . . . 12
- Mount the CD-ROM . . . . . 13
- Run the Database Server Installation . . . . . 14
  - Preliminary Setup . . . . . 14
  - Start Installation . . . . . 15
  - Complete Installation . . . . . 16
- Modify MFG/PRO Character Startup Parameters . . . . . 17
  - Update MFG/PRO Production Database Set . . . . . 17
  - Complete Parameter Modifications . . . . . 21
- Create the APM Medical Compilation Database Set . . . . . 21
- Set the PROPATH . . . . . 23
- Generate Server Scripts . . . . . 23
- Set Up Services on the Database Server . . . . . 24

**Chapter 3 Setting Up APM Medical for Windows . . . . . 25**

- Character and Windows Programs . . . . . 26
- Load APM Medical Windows Files . . . . . 26
- Modify MFG/PRO for Windows Startup Parameters . . . . . 28
  - Update MFG/PRO Production Database Set . . . . . 28
  - Generate Client Scripts . . . . . 31
  - Set the PROPATH . . . . . 31
- Compile APM Medical Windows Programs . . . . . 32
  - Create Client View of Compilation Database Set . . . . . 32
  - Compile for APM Medical . . . . . 34
- Set Up APM Medical on Each Client PC . . . . . 36
  - New MFG/PRO Windows Clients . . . . . 36
  - Existing MFG/PRO Windows Clients . . . . . 36

**Chapter 4 Completing the Installation . . . . . 39**

- Sales Order Control . . . . . 40
- Pricing Control . . . . . 41
- APM Control File . . . . . 41
- Restart Applications . . . . . 41



# About This Guide

*What Is in This Guide?* 2

*Installation Errata* 2

*APM Medical Documentation* 2

*QAD Web Site* 3

*Typographic Conventions* 4

## What Is in This Guide?

Use this guide to install the following Advanced Pricing Management (APM) Medical versions for UNIX:

- Version 2.3M04 for MFG/PRO eB
- Version 2.4M04 for MFG/PRO eB2
- Version 2.4M05 for MFG/PRO eB2 Service Pack 5 and higher

You can use the instructions in this guide to:

- Install the APM Medical server software on UNIX.
- Install the APM Windows programs to run with MFG/PRO in Windows mode.

**Important** Since this installation procedure applies to multiple versions of APM Medical, for reading ease, the version number convention is 2.xM.

These instructions are for the MFG/PRO system administrator who manages the MFG/PRO database and is familiar with the UNIX environment, networking, Progress, and Microsoft Windows.

## Installation Errata

In addition to these instructions, you may receive a supplementary errata sheet with changes and additional instructions. Check your product package. In addition, when you begin the installation, check the QAD Web site to verify that you have the latest version.

## APM Medical Documentation

For information on using APM Medical, refer to *User Guide: Trade Management* and *User Guide Supplement: Trade Management*. The supplement includes information about the latest changes and enhancements to the application.

For technical details, refer to *Trade Management Entity Diagrams* and *Trade Management Database Definitions*.

To view documents online in PDF format, see the *Supplemental Documents on CD*.

The APM Medical installation guide is not included on a CD. Printed copies are packaged with your software. Electronic copies of the latest versions are available on the QAD Web site.

**Note** Although the referenced documents are for Trade Management—formerly known as APM Base—the features of APM Medical are very similar and the documents apply to both of these related products.

## Online Help

APM Medical has an extensive online help system. Help is available for most fields found on a screen. Help is available for most fields found on a screen. Procedure help is available for most programs that update the database. Most inquiries, reports, and browses do not have procedure help.

For information on using the help system, refer to *User Guide: Trade Management*.

## QAD Web Site

The QAD Web site provides a wide variety of information about the company and its products. You can access the Web site at:

<http://www.qad.com>

For MFG/PRO users with a QAD Web account, product documentation is available for viewing or downloading at:

<http://support.qad.com/>

You can register for a QAD Web account by accessing the Web site and clicking the Accounts link at the top of the screen. Your customer ID number is required. Access to certain areas is dependent on the type of agreement you have with QAD.

Web features also include an online solution database to help QAD customers answer questions about setting up and using the product. Additionally, the QAD Web site has information about training classes and other services that can help you learn about QAD products.

## Typographic Conventions

Although MFG/PRO is available in several interfaces, APM Medical is currently only available through the character interface.

This document uses the text or typographic conventions listed in the following table.

<b>If you see:</b>	<b>It means:</b>
monospaced text	A command or file name.
<i>italicized</i> monospaced text	A variable name for a value you enter as part of an operating system command; for example, <i>YourCDROMDir</i> .
indented command line	A long command that you enter as one line, although it appears in the text as two lines.
<b>Note</b>	Alerts the reader to exceptions or special conditions.
<b>Important</b>	Alerts the reader to critical information.
<b>Warning</b>	Used in situations where you can overwrite or corrupt data, unless you follow the instructions.

# Introduction

This chapter provides an overview of installing APM Medical, creating required databases, and system requirements.

*MFG/PRO and APM Medical*    **6**

*Installation Overview*    **6**

*APM Medical Databases*    **7**

*Minimum Requirements*    **8**

*Installation Utility*    **9**

## MFG/PRO and APM Medical

Advanced Pricing Management (APM) Medical is a Progress-based application intended to work in combination with MFG/PRO Version eB and eB2. APM Medical databases and programs are integrated with MFG/PRO.

APM Medical is typically deployed on the same server as your production MFG/PRO instance.

## Installation Overview

Use these instructions to install Advanced Pricing Management Medical. Major tasks in setting up the APM Medical application are listed here.

### Prior to Installation

Complete these tasks before installing APM Medical:

- Set up the network.
- Set up `services` files for client/server connections if you have multiple hosts.
- Install any patches for your operating system.
- Install MFG/PRO.
- Install the latest Progress patches. These can be obtained from:

<http://www.progress.com/support>

### Database Server Installation

- Load the media, compile the programs, and create the APM Medical databases.
- Set up the necessary services for the APM Medical databases.
- Modify MFG/PRO character startup parameters.

## Windows File Server Installation

It is important to note that APM is a character-based system. These Windows-based programs are purely for enabling MFG/PRO to run under GUI mode when integrated with APM.

- Load Windows-based APM Medical programs.
- Compile the Windows-based APM Medical programs.

## Windows Client PC Setup

- Set up services and host names.
- Modify MFG/PRO for Windows client startup parameters.

## Completing the Installation

- In MFG/PRO Sales Order Control (7.1.24), set the Integrate with APM field to Yes.  
**Note** This field is labeled Integrate with TrM in MFG/PRO eB2 SP3 and higher.
- In MFG/PRO Pricing Control (1.10.1.24), enter a promotions prefix and set the QO and SO Price by Line fields to Yes.
- On page 10 in the APM Control File (7.20.19.1), set site-appropriate values as they relate to APM Medical and MFG/PRO integration.
- Restart both APM Medical and MFG/PRO so that the MFG/PRO startup routine can run the APM Medical interface program.

## APM Medical Databases

Each APM Medical database is created from its corresponding empty database.

### Main Databases

apmdb.db	Production database
apmdbemp.db	Empty production database without default data

### Transaction Databases

apmtran.db	Transaction database
apmtremp.db	Empty transaction database

### Medical Databases

apmmmed.db	Medical database
apmmdemp.db	Empty medical database

### Sales Analysis Databases

apmsale.db	Sales analysis database
apmsaemp.db	Empty sales analysis database

## Minimum Requirements

The following requirements are specific to APM Medical. For MFG/PRO minimum requirements, refer to the appropriate MFG/PRO installation guide.

### Database Server

**Operating System:** UNIX

**Progress:** The Progress version required by MFG/PRO is sufficient. Also, at least one license of Progress 4GL is required.

**MFG/PRO:** MFG/PRO eB or eB2 must be installed and configured.

**Disk Space:** The installation program verifies that at least 500 MB of space exists on the selected file system.

If you are installing the software from tape media, you must first copy the installation files to a temporary directory, which will require 500 MB of disk space on your machine in addition to the space required for APM Medical.

### Windows File Server and Clients

In addition to MFG/PRO requirements for the file server, you need at least 1 MB for certain APM Medical Windows-based programs. For Windows client PCs, the MFG/PRO requirements are sufficient.

## Installation Utility

A large portion of the installation is managed by a QAD utility called MFG/UTIL. This product can be used for numerous database management tasks, both for the server and Windows clients.

After installation, you can access MFG/UTIL to perform maintenance, such as compilation and editing startup scripts or Windows client icons.

### Keyboard Commands

Keyboard commands for MFG/UTIL are listed in Table 1.1.

Keyboard Entry	Command Name	Description
F1	Go	Moves to next frame or runs a program
F2	Help	Displays context-sensitive help (may not be available for all functions)
F3	Menu Bar	Accesses the menu bar
F4	End	Exits a frame, program, or menu
Spacebar	Select	Selects check boxes and on/off options
Enter or Tab	Tab	Moves to next field or command
Shift+Tab or Control+U	Back Tab	Moves to the previous field or command

**Table 1.1**  
MFG/UTIL  
Character Interface  
Commands

**Note** In the character interface, buttons appear within angle brackets: <OK>. To choose a button, Tab to the button and press Enter.

## Log Files

You can refer to the following log files created by the installation utilities.

Utility	Log File Name	Directory Location
Installation script	install.log and mfgpro.log	Subdirectory /log under the installation target directory
MFG/UTIL	mfgutil.log	MFG/PRO installation directory

**Note** Each time MFG/UTIL runs a prolonged task, such as compiling or loading a .df file, it creates a new log file. The most recent log file is always called mfgutil.log. Older log files are named with the convention mfgutil.xxx, where xxx is a number from 001 through 999. The lower the number, the older the file. For example, these files are listed newest to oldest:

```
mfgutil.log
mfgutil.002
mfgutil.001
```

# Setting Up the Database Server

This chapter explains the installation steps for the UNIX database server.

*Load APM Medical from Tape Media*    **12**

*Mount the CD-ROM*    **13**

*Run the Database Server Installation*    **14**

*Modify MFG/PRO Character Startup Parameters*    **17**

*Create the APM Medical Compilation Database Set*    **21**

*Set the PROPATH*    **23**

*Generate Server Scripts*    **23**

*Set Up Services on the Database Server*    **24**

## Load APM Medical from Tape Media

Complete these steps only if you are installing from tape media. If the software is on CD-ROM, skip to “Mount the CD-ROM” on page 13.

You must load the tape media into a temporary directory and then, in the next section, extract APM Medical from the temporary directory into a permanent installation directory. The temporary directory requires 500MB disk space in addition to the space required for APM Medical. After you complete all the installation tasks, you can remove the temporary directory and its contents.

- 1 Log on as the root user ID.
- 2 Create a temporary installation directory on the same machine as your APM Medical installation directory.

**Note** Make sure you have an extra 500MB disk space on your machine in addition to the space required for APM Medical.

- 3 Insert the tape into the tape drive.
- 4 Change to the APM Medical temporary tape directory.

```
cd TemporaryTapeDir
```

- 5 Choose and enter the applicable load command from the following table.

On this type of hardware...	Enter this load command...
NCR Tower 600 or Unisys 5000/50	<code>dd if=/dev/rtp conv=swab   cpio -iumvdBc</code>
HP 9000/800 Series, 1/4" cartridge	<code>tcio -i /dev/rct/<i>YourTapeDevice</i>   cpio -iumvdBc</code>
All others	<code>cpio -iumvdBc &lt; /dev/<i>YourTapeDevice</i></code>

**Note** All APM Medical tapes are written using a block size of 5120 bytes.

- 6 Remove the tape and store it safely.
- 7 Continue with running the server installation at step 1 on page 14.

## Mount the CD-ROM

The CD-ROMs are formatted with the Rock Ridge Interchange protocol, an ISO 9960:1988 compliant approach to providing CD-ROM support for Posix file system semantics.

If you are installing from CD-ROM media, follow these steps to mount the CD-ROM.

- 1 Log on as the root user ID.
- 2 Make a CD-ROM directory if it does not already exist (referred to as *YourCDROMDir* in this document).
- 3 Place the APM Database Server CD-ROM into the CD-ROM drive.
- 4 Mount the CD-ROM. The mount command differs from system to system. Listed below are example commands for mounting the APM CD-ROM.

### Digital UNIX or Tru64

```
mount -r -t cdfs -o rrip
/dev/YourcdDevice /YourCDROMDir
```

For more information, use `man mount`.

### Solaris

Most Solaris systems mount the CD-ROM automatically. If this is not the case, use this command:

```
mount -F hsfs -o ro
/dev/YourcdDevice /YourCDROMDir
```

For more information, use `man mount_hsfs`.

### AIX

```
mount -r -v cdrfs
/dev/YourcdDevice /YourCDROMDir
```

For more information, use `man mount`.

### HPUX

Edit the `/etc/pfs_fstab` file to contain this line:

```
/dev/YourcdDevice /YourCDROMDir  
pfs-rrip ro,suid 0 0
```

Run these daemons as root:

```
nohup /usr/sbin/pfs_mountd &  
nohup /usr/sbin/pfsd &
```

Ensure that the daemons are running, then use this command:

```
pfs_mount /YourCDROMDir
```

For more information, use `man pfs`.

## Run the Database Server Installation

Follow these steps to install APM Medical on your server.

### Preliminary Setup

- 1 Log on as user `mfg` under the group `qad`.  
**Note** You should have already created this user and group when you installed MFG/PRO; refer to the MFG/PRO installation guide for your system.
- 2 Use the standard terminal types while installing APM Medical. For example, for a VT100, set your `TERM` variable to `vt100` during the installation. Once the MFG/PRO software has been installed, you can use one of the language-dependent versions of `vt100`, such as `vt100fr`.
- 3 Determine the directory locations for the following:
  - Create the APM Medical installation directory now or let the installation process create it for you. In either case, ensure that the user `mfg` has permission to use this directory.
  - Directory location of Progress for the server.
  - Location and physical name of the MFG/PRO production database and the MFG/PRO installation directory (if different).

## Start Installation

- 1 From the UNIX prompt, change to the drive containing the APM Medical media.
- 2 Execute the script `install`.
- 3 Complete the following prompts or accept the defaults.
 

```
Enter Progress installation directory
```

At the prompt, confirm the version and location of Progress.

```
Enter your terminal type
```
- 4 The installation question wizard prompts for the following data:
  - The full path name of the directory where you want to install APM Medical. If it does not already exist, it will be created.
  - The MFG/PRO database directory.
  - The MFG/PRO encrypted source directory (`xrc`) name.
  - The MFG/PRO physical database. (This information is used during compilation. Using `mfgempty` or `mfg` is recommended if they reflect the production environment.)
- 5 When you have completed the last item of data, choose Finish.
 

**Note** The installation script now checks for available disk space. If there is not enough space, the installation stops and you must obtain adequate disk space and restart the installation.
- 6 When the following prompt appears, answer Yes to continue or No if you are not ready.
 

```
Expand the media to apminstalldir now [Y/N]? Y
```
- 7 Wait for the installation script to unload APM Medical. This process can take several hours.
 

**Note** You should monitor the process, especially if the database is being created on a remote system. In this case, the script generates warnings that must be acknowledged before the installation can continue.
- 8 After the databases are built and the programs are compiled, in response to the prompt, stop the Production database. This must be done from a separate session on the server.

- 9 In response to the prompt, enter the full path and file name for the MFG/PRO production database.
- 10 If the MFG/PRO production database cannot be located, you will be prompted to enter the full path and file name for this database.  
**Note** At this point, the installation script may display several messages concerning Menu 7, Selection 20. Disregard these messages.

This completes the process of loading the APM Medical files onto the server.

### Complete Installation

- 1 Check for error messages in two places:
  - a To check for installation errors, use a text editor to view the installation log, *APMInstallDir/log/apm.log*.
  - b To check for compilation errors, type the following command:

```
grep "\*\*" /APMInstallDir/xrc/*.msg
```

**Note** Skip steps 2 through 4 if you are loading APM Medical from tape.
- 2 Log on as the root user ID.
- 3 Unmount the CD-ROM by typing the following command:

```
umount /YourCDROMDir
```
- 4 Remove the CD-ROM from your CD drive and return it to the case for safekeeping.

## Modify MFG/PRO Character Startup Parameters

Update the Production database set to add APM Medical databases and parameters to the MFG/PRO startup parameters.

### Update MFG/PRO Production Database Set

A database set controls the connection parameters for creating character client and server startup scripts for MFG/PRO sessions. This section assumes you have already completely installed MFG/PRO.

You will add the following databases to the MFG/PRO production database set:

- APM Medical production database
- APM Medical transaction database
- APM Medical medical database
- APM Medical sales analysis database

These steps create client and server views for the APM Medical databases in the Production database set:

- 1 Launch MFG/UTIL from *MFGPROInstallDir* using the following command:
 

```
./mfgutil
```
- 2 Choose the MFG/UTIL Configure menu and choose Database Set Maintenance.
- 3 When the Database Set Configuration window appears, select the Production database set.

### APM Medical Production Database

- 1 With the Production database set selected, click New Client to display the Client View of Database Parameters window. As you complete this window, refer to the following table.

Physical:	apmdb
Logical:	apmdb

Description: APM Medical production database  
Connect Params:  
Connection Type: Local  
Path: Directory where the APM Medical databases are to be stored;  
for example: /qad/apm

- 2 Click OK in the Client View of Database Parameters window.
- 3 With the APM Medical production database highlighted, click Edit Server to display the Server View of Database Parameters window.
- 4 Refer to the following table as you complete the Server View of Database Parameters window.

Physical: apmdb  
Description: APM Medical production database  
Server Params: -cpstream ibm850 -cpinternal iso8859-1  
-cpcoll basic -L 8000 -c 250 -B 1000  
Service: apmdb  
Path: Directory where the APM Medical databases are to be stored; for  
example: /qad/apm

- 5 Click OK in the Server View of Database Parameters window.

### APM Medical Transaction Database

- 1 With the Production database set selected, click New Client to display the Client View of Database Parameters window. As you complete this window, refer to the following table.

Physical: apmtran  
Logical: apmtran  
**Note:** In APM Medical 2.4M05 for MFG/PRO eB2 SP5 or higher, this should be trmdb.  
Description: APM Medical transaction database  
Connect Params:  
Connection Type: Local  
Path: Directory where the APM Medical databases are to be stored; for  
example: /qad/apm

- 2 Click OK in the Client View of Database Parameters window.
- 3 With the APM Medical transaction database highlighted, click Edit Server to display the Server View of Database Parameters window.
- 4 Refer to the following table as you complete the Server View of Database Parameters window.

Physical:	apmtran
Description:	APM Medical transaction database
Server Parms:	<code>-cpstream ibm850 -cpinternal iso8859-1 -cpcoll basic -L 8000 -c 250 -B 1000</code>
Service:	apmtran
Path:	Directory where the APM Medical databases are to be stored; for example: /qad/apm

- 5 Click OK in the Server View of Database Parameters window.

### APM Medical Medical Database

- 1 With the Production database set selected, click New Client to display the Client View of Database Parameters window. As you complete this window, refer to the following table.

Physical:	apmmed
Logical:	apmmed
Description:	APM Medical medical database
Connect Parms:	
Connection Type:	Local
Path:	Directory where the APM Medical databases are to be stored; for example: /qad/apm

- 2 Click OK in the Client View of Database Parameters window.
- 3 With the APM Medical medical database highlighted, click Edit Server to display the Server View of Database Parameters window.
- 4 Refer to the following table as you complete the Server View of Database Parameters window.

Physical:	apmmed
Description:	APM Medical medical database

Server Params: `-cpstream ibm850 -cpinternal iso8859-1  
-cpcoll basic -L 8000 -c 250 -B 1000`  
Service: `apmmed`  
Path: Directory where the APM Medical databases are to be stored; for  
example: `/qad/apm`

- 5 Click OK in the Server View of Database Parameters window.

### APM Medical Sales Analysis Database

- 1 With the Production database set selected, click New Client to display the Client View of Database Parameters window. As you complete this window, refer to the following table.

Physical: `apmsale`  
Logical: `apmsale`  
Description: `APM Medical sales analysis database`  
Connect Params:  
Connection Type: `Local`  
Path: Directory where the APM Medical databases are to be stored; for  
example: `/qad/apm`

- 2 Click OK in the Client View of Database Parameters window.
- 3 With the APM Medical sales analysis database highlighted, click Edit Server to display the Server View of Database Parameters window.
- 4 Refer to the following table as you complete the Server View of Database Parameters window.

Physical: `apmsale`  
Description: `APM Medical sales analysis database`  
Server Params: `-cpstream ibm850 -cpinternal iso8859-1  
-cpcoll basic -L 8000 -c 250 -B 1000`  
Service: `apmsale`  
Path: Directory where the APM Medical databases are to be stored; for  
example: `/qad/apm`

- 5 Click OK in the Server View of Database Parameters window.

## Complete Parameter Modifications

- 1 In MFG/UTIL, choose Database Set Maintenance from the Configure menu to display the Database Set Configuration window.
- 2 Count the number of databases displayed in the bottom frame and record for use in step 4.  
 Number of production databases: \_\_\_\_\_
- 3 With the Production database set selected, click Edit Set to display the Database Sets window.
- 4 Add `-h number of databases` at the beginning of the Start Params field (*number of databases* counted in step 2 of this section).
- 5 Click OK.

## Create the APM Medical Compilation Database Set

Follow these steps to set up a compilation database set in the Database Set Configuration window. This database set is used in Chapter 3 to compile APM Medical Windows programs to use with MFG/PRO in Windows mode.

- 1 In MFG/UTIL, choose Database Set Maintenance from the Configure menu to display the Database Set Configuration window.
- 2 Click New Set and complete the fields as follows.
 

Set Name:	APMCompile
Set Description:	APM Compile database set
Start Params:	Accept default
Active:	Yes
- 3 Click OK.
- 4 Select the APMCompile database set you just created.
- 5 Click New Server and complete the fields as follows.

Physical: mfgempty  
Description: Empty MFG/PRO database  
Server Parm: Blank  
Service: *YourServiceName*  
Path: Explicit path for APM Medical server location

**6** Click OK.

**7** Click New Server and complete the fields as follows.

Physical: apmdb  
Description: APM Medical production database  
Server Parm: Blank  
Service: apmdb  
Path: Explicit path for APM Medical server location

**8** Click OK.

**9** Click New Server and complete the fields as follows.

Physical: apmtran  
Description: APM Medical transaction database  
Server Parm: Blank  
Service: apmtran  
Path: Explicit path for APM Medical server location

**10** Click OK.

**11** Choose New Server and complete the fields as follows.

Physical: apmmmed  
Description: APM Medical medical database  
Server Parm: Blank  
Service: apmmmed  
Path: Explicit path for APM Medical server location

**12** Click OK.

**13** Click New Server and complete the fields as follows.

Physical: apmsale  
Description: APM Medical sales database

Server Params: Blank  
 Service: apmsale  
 Path: Explicit path for APM Medical server location

- 14 Click OK.
- 15 When all the databases are entered, Click OK in the Database Set Configuration window.

## Set the PROPATH

- 1 From the MFG/UTIL Configure menu, choose DLC and PROPATH Variables.
- 2 In the PROPATH field, add the directory location of the APM Medical installation directory, which contains the APM Medical programs. Insert the APM Medical directory location *at the front* of the PROPATH; for example:
 

```
./APMMedicalInstallDir/existingPropath
```
- 3 Verify the PROPATH settings in the client scripts. It must reflect the same change in step 2 above.

## Generate Server Scripts

- 1 From the MFG/UTIL Scripts menu, choose Generate Server Startup and Shutdown.
- 2 From Create Unix Server Scripts, select two items: Production and APMCompile.
- 3 Click OK.
- 4 Click Yes in response to the Overwrite Previous Scripts? prompt. This launches the APM Medical production, transaction, medical, and sales analysis database servers next time you start MFG/PRO.
- 5 Exit from MFG/UTIL when finished.

## Set Up Services on the Database Server

Because MFG/PRO for Windows clients need to connect to the APM Medical databases, you must edit the `services` file to include network services for the APM Medical database servers.

Locate your `services` file (usually in the `/etc` directory) and add the services `apmdb`, `apmtran`, `apmmed`, and `apmsale` for APM Medical. Any available socket number is acceptable, but the names `apmdb`, `apmtran`, `apmmed`, and `apmsale` must be used. See the following example.

```
apmdb      4210/tcp    # APM production database process
apmtran    4220/tcp    # APM transaction database process
apmmed     4230/tcp    # APM Medical medical database process
apmsale    4240/tcp    # APM Medical sales analysis database process
```

**Any available socket**      **Network type**



Record these settings; you will use them for the activities described under “Set Up APM Medical on Each Client PC” on page 36.



## Chapter 3

# Setting Up APM Medical for Windows

This chapter describes setting up the Windows file server and PC clients for APM Medical to run in MFG/PRO Windows mode.

- Character and Windows Programs*    **26**
- Load APM Medical Windows Files*    **26**
- Modify MFG/PRO for Windows Startup Parameters*    **28**
- Compile APM Medical Windows Programs*    **32**
- Set Up APM Medical on Each Client PC*    **36**

## Character and Windows Programs

Since APM Medical is a character-based application accessed by MFG/PRO, several Windows-based APM Medical programs are required in order for certain MFG/PRO functions to run in Windows.

For example, the MFG/PRO invoice post function, which can be run in character or Windows mode, interacts with the APM Medical database. The APM Medical Windows programs must have the same functionality as the character programs.

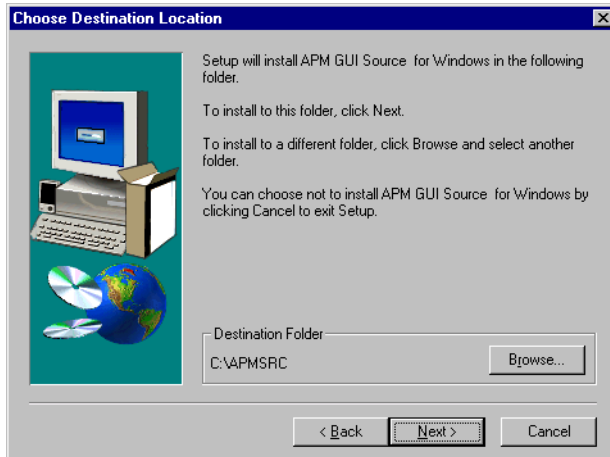
## Load APM Medical Windows Files

**Note** These instructions assume you have already installed MFG/PRO eB or eB2 for Windows on the file server. For the purposes of these instructions, G: is used to represent the network file server drive.

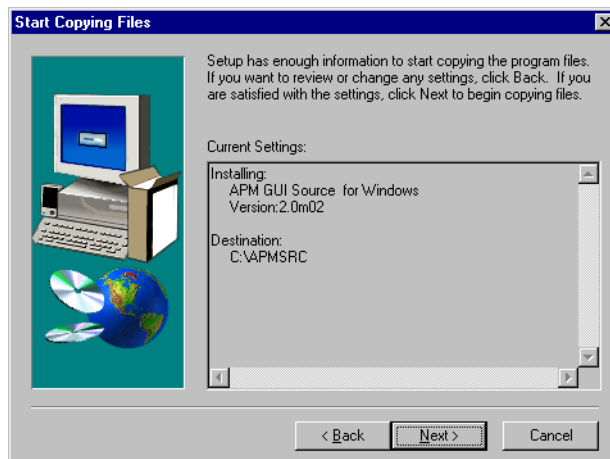
- 1 Start on a PC that is connected to your network file server and has a CD-ROM drive. Insert the APM Medical GUI CD-ROM into the CD-ROM drive.
- 2 Run the program `setup.exe` on the CD-ROM using the method appropriate to your version of Windows.
- 3 The following window advises you to quit all other applications before continuing the installation. Click Next to continue.



- 4 When the following window appears, examine the default destination directory. (The drive must be on the file server.) You can click Browse if you want to change the directory or drive. Click Next to continue.



- 5 Confirm the installation information in the following window. Click Back to change the information, or click Next to continue.



- 6 Click Finish in the Installation Complete window to complete the setup process.

## Modify MFG/PRO for Windows Startup Parameters

Complete these steps to add APM Medical databases and parameters to the MFG/PRO for Windows startup parameters: update the Production database set, set the PROPATH, and generate the client startup script.

### Update MFG/PRO Production Database Set

These steps create client views for the APM Medical databases in the Production database set.

- 1 Start MFG/UTIL on a PC by double-clicking the MFG/UTIL icon in the MFG/PRO program group or selecting it from the Start menu.
- 2 When the MFG/UTIL main menu appears, choose the Configure menu and choose Database Set Maintenance.
- 3 In the Database Set Configuration window, select the Production database set.
- 4 With the Production database set selected in the Database Set Configuration window, click New Client to display the Client View of Database Parameters window.

Window 1

Client View of Database Parameters:

Physical:

Logical:

Description:

Connect Parms:

Connection Type:

Host:

Service:

- 5 Complete the fields according to the following table, placing your actual APM Medical database server host name in the Host field.

Physical:	apmdb
Logical:	apmdb
Description:	APM Medical production database
Connect Parms:	
Connection Type:	Client Server
Host:	YourHostName
Service:	apmdb

- 6 Click OK in the Client View of Database Parameters window.
- 7 With the Production database set selected in the Database Set Configuration window, click New Client to display the Client View of Database Parameters window.
- 8 Complete the fields according to the following table, placing your actual APM Medical database server host name in the Host field.

Physical:	apmtran
Logical:	apmtran
	<b>Note:</b> In APM Medical 2.4M05 for MFG/PRO eB2 SP5 or higher, this should be trmdb.
Description:	APM Medical transaction database
Connect Parms:	
Connection Type:	Client Server
Host:	YourHostName
Service:	apmtran

- 9 Click OK in the Client View of Database Parameters window.
- 10 With the Production database set selected in the Database Set Configuration window, click New Client to display the Client View of Database Parameters window.
- 11 Complete the fields according to the following table, placing your actual APM Medical database server host name in the Host field.

Physical:	apmmed
Logical:	apmmed
Description:	APM Medical medical database

Connect Params:  
Connection Type: Client Server  
Host: *YourHostName*  
Service: apmmed

- 12 Click OK in the Client View of Database Parameters window.
- 13 With the Production database set selected in the Database Set Configuration window, click New Client to display the Client View of Database Parameters window.
- 14 Complete the fields according to the following table, placing your actual APM Medical database server host name in the Host field.

Physical:	apmsale
Logical:	apmsale
Description:	APM Medical sales analysis database
Connect Params:	
Connection Type:	Client Server
Host:	<i>YourHostName</i>
Service:	apmsale

- 15 Click OK in the Client View of Database Parameters window.
- 16 Count the number of databases in this set and record for use in step 18.

Number of production databases: \_\_\_\_\_

- 17 With the Production database set selected, click Edit Set.

- 18 Add `-h` number of databases (from step 16) to the beginning of the Start Params field.

The screenshot shows a window titled "Database Sets" with the following fields and controls:

- Database Set Parameters:**
  - Set Name: Production
  - Set Description: Customer Production
  - Start Params: -h 6 -cpinternal iso8859-1 -cpcoll basic -Bt 350 -c 30 -D 100 -mmax 81
  - Active: YES (checked)
- Buttons: OK, Cancel, Help, New, Delete

- 19 Click OK in the Database Sets window.
- 20 Click OK in the Database Set Configuration window.

## Generate Client Scripts

- 1 In the MFG/UTIL main menu, select the Scripts menu and choose Generate User Startup.
- 2 Select the database set that you just edited and choose OK.
- 3 On the File menu, select Save Default mfgutil.ini. Select Yes at the Save to Administration Directory? prompt.
- 4 When the MFG/UTIL main menu reappears, choose Exit from the File menu.

## Set the PROPATH

- 1 Use a text editor to open `progress.svg` or `progress.vga`, located in the MFG/PRO client installation directory of the client PC.
  - `Progress.vga` is for screen resolutions of 640 x 480.
  - `Progress.svg` is for screen resolutions of 800 x 600.

- 2 In the PROPATH statement, insert the directory location of the APM Medical Windows file server installation directory, which contains the APM Medical Windows programs. For example:

```
PROPATH = .,G:\mfgproInstallDir,G:\apmInstallDir
```

## Compile APM Medical Windows Programs

### Create Client View of Compilation Database Set

- 1 Start an MFG/UTIL Windows session by double-clicking the MFG/UTIL icon on the file server.
- 2 From the MFG/UTIL Configure menu, select Database Set Maintenance.
- 3 Click New Set and complete the fields as follows.

Set Name:	APMCompile
Set Description:	APM Medical Compile database set
Start Parms:	Accept default
Active:	Yes

- 4 Click OK.
- 5 Select the APMCompile database set you just created.
- 6 Click New Client and complete the fields as follows.

Physical:	mfgempty
Logical:	qaddb
Description:	Empty MFG/PRO database
Connect Parms:	-RO
Connect Type:	Client Server
Host:	<i>YourHostName</i>
Service:	<i>YourServiceName</i>

- 7 Click OK.

**8** Click New Client and complete the fields as follows.

Physical: apmdb  
 Logical: apmdb  
 Description: APM Medical production database  
 Connect Parms: -RO  
 Connect Type: Client Server  
 Host: *YourHostName*  
 Service: apmdb

**9** Click OK.**10** Click New Client and complete the fields as follows.

Physical: apmtran  
 Logical: apmtran  
**Note:** In APM Medical 2.4M05 for MFG/PRO eB2 SP5 or higher, this should be trmdb.  
 Description: APM Medical transaction database  
 Connect Parms: -RO  
 Connect Type: Client Server  
 Host: *YourHostName*  
 Service: apmtran

**11** Click OK.**12** Click New Client and complete the fields as follows.

Physical: apmmmed  
 Logical: apmmmed  
 Description: APM Medical medical database  
 Connect Parms: -RO  
 Connect Type: Client Server  
 Host: *YourHostName*  
 Service: apmmmed

**13** Click OK.

14 Click New Client and complete the fields as follows.

Physical:           apmsale  
 Logical            apmsale  
 Description:       APM Medical sales analysis database  
 Connect Parms:    -RO  
 Connect Type:     Client Server  
 Host:              YourHostName  
 Service:           apmsale

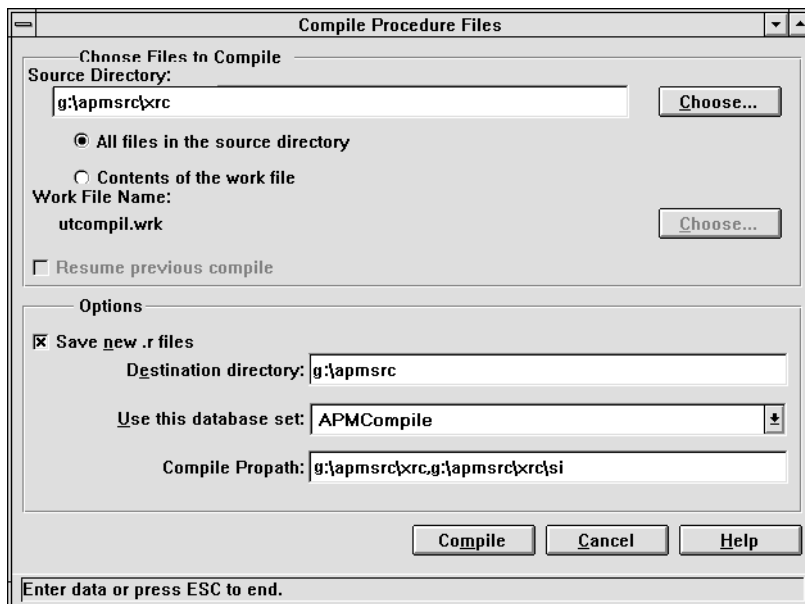
15 Click OK.

16 Click OK in the Database Set Configuration window.

## Compile for APM Medical

**Important** Before compiling, be sure that APMCompile is the only database running on the database server.

1 From the Program menu, choose Compile Procedure Files.



- 2 In the Source Directory field, enter the name of the *APM parent directory* created in step 4 on page 27. Add the *xrc* directory; for example:

```
g:\apmsrc\xrc
```

- 3 Select the All files in the source directory radio button.
- 4 Check the Save new .r files option.
- 5 In the Destination Directory field, enter the name of the *APM parent directory* created in step 4 on page 27; for example:

```
g:\apmsrc
```

- 6 Use the APMCompile Database Set.
- 7 Set the Compile Propath; for example:

```
.,g:\apmsrc\xrc,g:\APMInstallDir\us\xrc,  
g:\MFGPROInstallDir\us\xrc,g:\APMInstallDir\xrc
```

**Note** The *\APMInstallDir\xrc* directory must come at the *end* of the PROPATH.

- 8 Click Compile.
- 9 In the Source Directory field, enter the name of the *APM parent directory* created in step 4 on page 27. Add the *us\xrc* directory; for example:

```
g:\apmsrc\us\xrc
```

- 10 Click Compile.
- 11 When the compile is complete, close the log window.
- 12 Exit MFG/UTIL.
- 13 Return to the UNIX server.
- 14 After completion of Compile, run `./stop.APMCompile`

## Set Up APM Medical on Each Client PC

In this section, you perform client-specific tasks to set up the client PC; this can be the Windows file server or any other PC.

Before beginning the setup tasks, find the service and host names from the UNIX database server machine. Use the following table as a guide.

Process	Service	TCP Port	Host
Production	apmdb		
Transaction	apmtran		
Medical	apmmmed		
Sales analysis	apmsale		

### New MFG/PRO Windows Clients

Any new Windows client installations of MFG/PRO will contain the appropriate correct connections to APM Medical databases.

- 1 Refer to the appropriate MFG/PRO installation guide for instructions on configuring MFG/PRO.
- 2 In a text editor, add to your `services` file the service names and TCP port numbers for the APM Medical database process.
- 3 Your APM Medical databases may run on a different server from your MFG/PRO databases. If this is true, use a text editor to add to your `hosts` file the host name and IP address of the machine running the APM Medical databases.
- 4 Edit the `Progress.svg` file as described in step 1 on page 31.

### Existing MFG/PRO Windows Clients

- 1 Start MFG/UTIL.
- 2 From the Files menu, select Load Default `mfgutil`.
- 3 Select the Scripts option, and choose Generate User Startup.
- 4 In a text editor, add to your `services` file the service names and TCP port numbers for the APM Medical database process.

- 5 Your APM Medical databases may run on a different server from your MFG/PRO databases. If this is true, use a text editor to add to your `hosts` file the host name and IP address of the machine running the APM Medical databases.
- 6 Edit the `Progress.svg` file as described in “Set the PROPATH” on page 31.





## Chapter 4

# Completing the Installation

Use the instructions in this chapter to complete the installation and integrate APM Medical with MFG/PRO so that users will be able to run APM Medical from the MFG/PRO menu.

*Sales Order Control*    **40**

*Pricing Control*    **41**

*APM Control File*    **41**

*Restart Applications*    **41**

## Sales Order Control

- 1 Start an MFG/PRO client session in character mode.
- 2 In MFG/PRO Sales Order Control (7.1.24), set the Integrate with APM field to Yes.
 

**Note** This field is labeled Integrate with TrM in MFG/PRO eB2 SP3 and higher.
- 3 Press Go to save this change. Then press End until you have exited Sales Order Control.

```

sosopm.p b+                7.1.24 Sales Order Control File                11/21/97
1. Qty Available to Allocate = Qty Available - Qty Allocated
2. Qty Available to Allocate = Qty Available - Qty Allocated + Qty On Order
3. Qty Available to Allocate = Qty Available - Qty Required
4. Qty Available to Allocate = Qty Available - Qty Required + Qty On Order
Which calculation should be used for Qty Available to Allocate: 1
Allocate Sales Order Lines due in Days: 1 (0 for no allocations)
Limit Allocations to Avail to Allocate: yes Detail Allocations: no
Pick Only Allocated Lines: yes          Sales Order Prefix: S0
Are Sales Orders Printed: yes           Next Sales Order: 14391
Keep Booking History: yes              Invoice Prefix: IU
Keep Invoice History: yes              Next Invoice: 300481
Shipping Lead Time: 1                 Integrate with AR: yes
Company Address:                      Integrate with SA: yes
Sales Order Header Comments: no        Integrate with APM: yes
Sales Order Line Comments: no          Confirmed Orders: yes
Print Only Lines to Invoice: yes        Fiscal Start Month: 1
Ln Format S/M: single                  F.O.B.:

```

Set this field to Yes to complete the installation process.

This will enable you to access APM Medical from an MFG/PRO character session. Further initial setup instructions are provided in Chapter 4 of the *User Guide: Trade Management*.

## Pricing Control

In MFG/PRO Pricing Control (1.10.1.24), enter a promotions prefix and set the QO and SO Price by Line fields to Yes.

## APM Control File

APM must be integrated with MFG/PRO prior to adding or updating any records.

- 1 In MFG/PRO, go to APM Control File Maintenance (7.20.19.1).
- 2 The Control ID defaults to 1. Press Go once to enter the program.
- 3 Press Page Down to access page 10.
- 4 Change MFG/PRO? to Yes to integrate with MFG/PRO.
- 5 Press F1 to save; press F4 to exit.

## Restart Applications

Restart both APM Medical and MFG/PRO so that the MFG/PRO startup routine can run the APM Medical interface program.

