

Industry-specific

QAD SOLUTIONS

Manufacturing Applications

**Installation Guide
Advanced Pricing Management
(APM) Medical**

Windows Server and Windows Clients



78-0614A
APM Medical 2.3M04, 2.4M04, and 2.4M05
January 2005

This document contains proprietary information that is protected by copyright. No part of this document may be reproduced, translated, or modified without the prior written consent of QAD Inc. The information contained in this document is subject to change without notice.

QAD Inc. provides this material as is and makes no warranty of any kind, expressed or implied, including, but not limited to, the implied warranties of merchantability and fitness for a particular purpose. QAD Inc. shall not be liable for errors contained herein or for incidental or consequential damages (including lost profits) in connection with the furnishing, performance, or use of this material whether based on warranty, contract, or other legal theory.

QAD and MFG/PRO are registered trademarks of QAD Inc. The QAD logo is a trademark of QAD Inc.

Designations used by other companies to distinguish their products are often claimed as trademarks. In this document, the product names appear in initial capital or all capital letters. Contact the appropriate companies for more information regarding trademarks and registration.

Copyright ©2005 by QAD Inc.
78-0614A

QAD Inc.

6450 Via Real

Carpinteria, California 93013

Phone (805) 684-6614

Fax (805) 684-1890

<http://www.qad.com>

Contents

About This Guide	1
What Is in This Guide?	2
Installation Errata	2
APM Medical Documentation	3
Online Help	3
QAD Web Site	3
Typographic Conventions	4
Chapter 1 Introduction	5
MFG/PRO and APM Medical	6
Installation Overview	6
Loading Client Media	6
Setting Up Database Server	6
Installing APM Windows Programs on MFG/PRO File Server	6
Setting Up Win32 Character Clients	7
Completing the Installation	7
APM Medical Databases	7
Minimum Requirements	8
Database Server	8
Windows File Server	8
Windows Clients	8

Chapter 2 Installing Client Media on the Win32 File Server 9

Installation Preparation 10
Load APM Character Client Files 10

Chapter 3 Setting Up the Database Server 13

Installation Task Summary 14
Installation Assumptions 14
Load Database Server Files 15
Modify MFG/PRO Character Startup Parameters 20
 Update MFG/PRO Production Database Set Server View 20
 Generate Server Scripts 23
Set Up Services on the Database Server 24

Chapter 4 Setting Up APM Medical for Windows 25

Character and Windows Programs 26
Task Summary 26
Load APM Medical Windows Files 26
Compile APM Medical Windows Programs 28
 Create Client View of APM Compile Database Set 28
 Generate Scripts 30
 Run Compile Procedure 31
Set Windows Client PROPATH 32

Chapter 5 Setting Up Win32 Character Clients 33

Task Summary 34
Load Files from the Win32 File Server 34
Modify MFG/PRO Character Client Startup Parameters 36
 Update MFG/PRO Production Database Set Client View 37
 Generate Client Scripts 41
 Set Character Client PROPATH 41
Modify the Services File on Client PCs 41

Chapter 6	Completing the Installation	43
	Sales Order Control	44
	Pricing Control	45
	APM Control File	45
	Restart Applications	45

The background of the page is a grayscale image of several interlocking gears. The gears are of various sizes and are arranged in a way that they appear to be meshing together. The lighting is soft, creating a sense of depth and texture. The overall tone is professional and technical.

About This Guide

What Is in This Guide? 2

Installation Errata 2

APM Medical Documentation 3

QAD Web Site 3

Typographic Conventions 4

What Is in This Guide?

Use this guide to install the following Advanced Pricing Management (APM) Medical versions for Windows:

- Version 2.3M04 for MFG/PRO eB
- Version 2.4M04 for MFG/PRO eB2
- Version 2.4M05 for MFG/PRO eB2 Service Pack 5 and higher

You can use the instructions in this guide to install:

- Windows file server software
- Windows database server software
- APM Windows files needed for character-based APM Medical to operate properly in an MFG/PRO Windows environment
- Windows clients for APM Medical

Important Since this installation procedure applies to multiple versions of APM Medical, for reading ease, the version number convention is 2.xM.

These instructions are for the MFG/PRO system administrator who manages the MFG/PRO database and is familiar with the Microsoft Windows environments, networking, and Progress.

Installation Errata

In addition to these instructions, you may receive a supplementary errata sheet with changes and additional instructions. Check your product package. In addition, when you begin the installation, check the QAD Web site to verify that you have the latest version.

APM Medical Documentation

For information on using APM Medical, refer to *User Guide: Trade Management* and *User Guide Supplement: Trade Management*. The supplement includes information about the latest changes and enhancements to the application.

For technical details, refer to *Trade Management Entity Diagrams* and *Trade Management Database Definitions*.

To view documents online in PDF format, see the *Supplemental Documents on CD*.

The APM Medical installation guide is not included on a CD. Printed copies are packaged with your software. Electronic copies of the latest versions are available on the QAD Web site.

Note Although the referenced documents are for Trade Management—formerly known as APM Base—the features of APM Medical are very similar and the documents apply to both of these related products.

Online Help

APM Medical has an extensive online help system. Help is available for most fields found on a screen. Help is available for most fields found on a screen. Procedure help is available for most programs that update the database. Most inquiries, reports, and browses do not have procedure help.

For information on using the help system, refer to *User Guide: Trade Management*.

QAD Web Site

The QAD Web site provides a wide variety of information about the company and its products. You can access the Web site at:

<http://www.qad.com>

For MFG/PRO users with a QAD Web account, product documentation is available for viewing or downloading at:

<http://support.qad.com/>

You can register for a QAD Web account by accessing the Web site and clicking the Accounts link at the top of the screen. Your customer ID number is required. Access to certain areas is dependent on the type of agreement you have with QAD.

Web features also include an online solution database to help QAD customers answer questions about setting up and using the product. Additionally, the QAD Web site has information about training classes and other services that can help you learn about QAD products.

Typographic Conventions

Although MFG/PRO is available in several interfaces, APM Medical is currently only available through the character interface.

This document uses the text or typographic conventions listed in the following table.

If you see:	It means:
monospaced text	A command or file name.
<i>italicized monospaced text</i>	A variable name for a value you enter as part of an operating system command; for example, <i>YourCDROMDir</i> .
indented command line	A long command that you enter as one line, although it appears in the text as two lines.
Note	Alerts the reader to exceptions or special conditions.
Important	Alerts the reader to critical information.
Warning	Used in situations where you can overwrite or corrupt data, unless you follow the instructions.

The background of the page is a grayscale image of several interlocking gears. The gears are of different sizes and are positioned in a way that they appear to be meshing together. The lighting is soft, creating a sense of depth and texture. The overall tone is professional and technical.

Chapter 1

Introduction

This chapter covers APM Medical structures, the installation process, and system requirements.

MFG/PRO and APM Medical **6**

Installation Overview **6**

APM Medical Databases **7**

Minimum Requirements **8**

MFG/PRO and APM Medical

Advanced Pricing Management (APM) Medical is a Progress-based application intended to work in combination with MFG/PRO Version eB and eB2. APM Medical databases and programs are integrated with MFG/PRO.

APM Medical is typically deployed on the same server as your production MFG/PRO instance.

Installation Overview

Use these instructions to install Advanced Pricing Management Medical. Major milestones involved with setting up the APM Medical application are listed here.

Loading Client Media

- Run the installation program to load the Win32 character client media onto a file server.

Setting Up Database Server

- Run the installation program to load database server media.
- Use MFG/UTIL to set startup parameters for APM Medical databases.
- Set up services file.

Installing APM Windows Programs on MFG/PRO File Server

APM Medical is a character-based application; however, several Windows-based APM Medical programs are required in order for certain MFG/PRO functions to run in Windows. For example, the MFG/PRO invoice post, which can be run in character or Windows mode, interacts with the APM Medical database. The APM Windows programs must have the same functionality as the character programs.

- Run the installation program to load programs needed to interface APM Medical databases with the MFG/PRO Windows environment.

- Compile APM Windows programs.

Setting Up Win32 Character Clients

- From each client, run the `setup.exe` program located on the file server.
- Use MFG/UTIL to set client startup parameters for APM Medical databases.
- Set up services file.

Completing the Installation

- In MFG/PRO Sales Order Control (7.1.24), set the Integrate with APM flag to Yes.
Note This field is labeled Integrate with TrM in MFG/PRO eB2 SP3 and higher.
- In MFG/PRO Pricing Control (1.10.1.24), enter a promotions prefix and set the QO and SO Price by Line fields to Yes.
- On page 10 in the APM Control File (7.20.19.1), set site-appropriate values as they relate to APM Medical and MFG/PRO integration.
- Restart both APM Medical and MFG/PRO so that the MFG/PRO startup routine can run the APM Medical interface program.

APM Medical Databases

Each APM Medical database is created from its corresponding empty database.

Main Databases

apmdb.db	Production database
apmdbemp.db	Empty production database without default data

Transaction Databases

apmtran.db	Transaction database
apmtremp.db	Empty transaction database

Medical Databases

apmmed.db	Medical database
apmmdemp.db	Empty medical database

Sales Analysis Databases

apmsale.db	Sales analysis database
apmsaemp.db	Empty sales analysis database

Minimum Requirements

The following requirements are specific to APM Medical. For MFG/PRO minimum requirements, refer to the appropriate MFG/PRO installation guide.

Database Server

Operating System: Windows Server

Progress: The Progress version required by MFG/PRO is sufficient. Also, at least one license of Progress 4GL or ProVISION is required.

MFG/PRO: MFG/PRO eB or eB2 must be installed and configured.

Disk Space: The database server should have approximately 200 MB of space available for the APM Medical databases.

Windows File Server

The file server should have an NTFS disk with 400 MB of free space.

Windows Clients

Each APM Medical for Windows Win32 client computer requires 1 MB of disk space.

Important Each APM Medical for Windows Win32 client computer must already have the Win32 MFG/PRO character client. Consult appropriate MFG/PRO installation documentation.



Chapter 2

Installing Client Media on the Win32 File Server

This chapter covers loading APM Medical Win32 character client files on a file server. One of the files loaded is `setup.exe`, which you will use to set up the character client computers in Chapter 5.

Installation Preparation **10**

Load APM Character Client Files **10**

Installation Preparation

Before you install the client files from your CD-ROM, you should:

- Know the destination drive and directory name.
- Log on to your network with write permission for this directory.

Load APM Character Client Files

Note Although figures used throughout this section are based on Windows NT Version 4.0 and APM Medical Version 2.0M02, the instructions are applicable to later versions of APM and Windows.

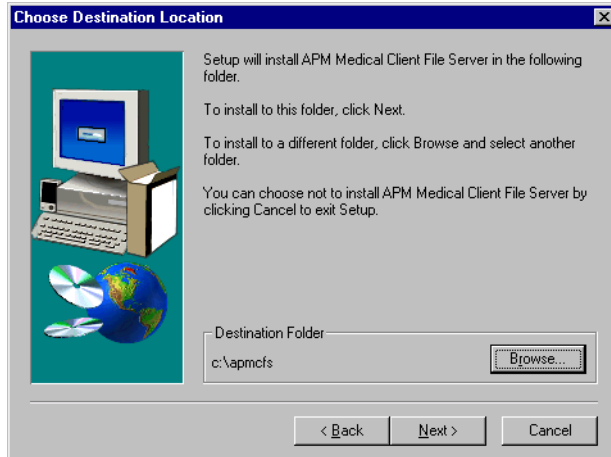
- 1 Insert the APM Medical for Windows File Server 2.xM CD-ROM in the CD-ROM drive of the file server.
- 2 Run the `setup.exe` program using the method appropriate for your system.

`CD-ROMDriveName:\setup.exe`

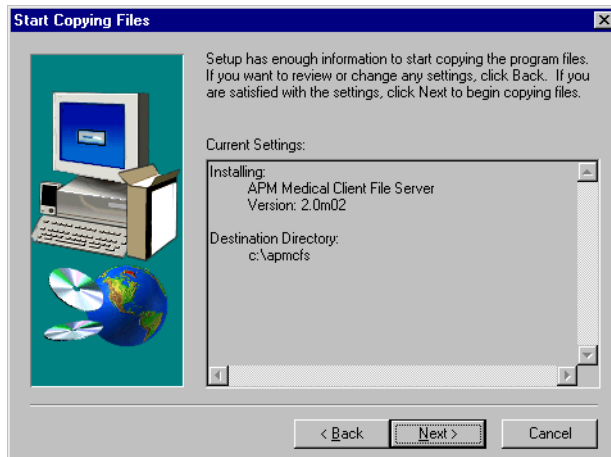
- 3 Click Next when the Welcome message window appears.



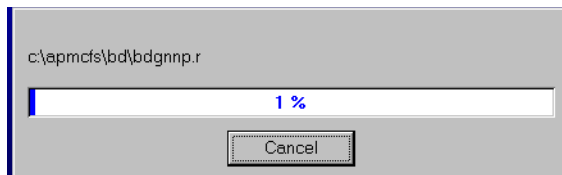
- 4 Click Browse to enter the complete path to the directory where you want the APM Medical character client files to be installed. Click Next to continue.



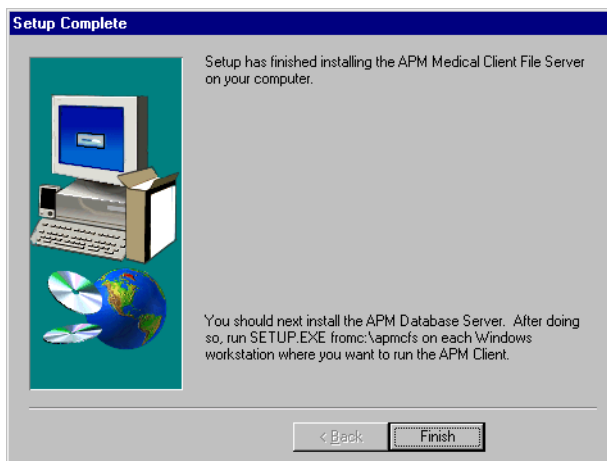
- 5 At the confirmation window, verify that the installation information is correct. Click Next to begin installing, or Back to make changes.



- 6 A status window shows the progress of the installation process.



- 7 After the files are copied, the following window appears; click Finish.





Chapter 3

Setting Up the Database Server

Use this chapter to load the APM Medical database server media and set up the necessary databases.

Installation Task Summary **14**

Installation Assumptions **14**

Load Database Server Files **15**

Modify MFG/PRO Character Startup Parameters **20**

Set Up Services on the Database Server **24**

Installation Task Summary

The main tasks in this process include:

- Loading the media
- Configuring the server database sets
- Generating startup scripts
- Setting up services on the database server

Installation Assumptions

The installation procedures in this section are based on these assumptions:

- Microsoft Windows is installed on your database server.
- The Production databases for MFG/PRO are installed on your database server and are shut down before you begin installing APM Medical.
- TCP/IP is the network protocol.
- The required Progress products are installed on the Windows Server: ProVISION, Enterprise DB Server, and Client Networking.
- You have already installed the APM Medical for Windows file server software on your Windows file server, as described in Chapter 2, and you can access it from your database server.
- You know the directory name where you will store the APM Medical for Windows 2.xM product. The default directory is `c:\Program Files\QAD\APM NT database server`; you can choose another name, such as `\qad\apmnt`.

Before installing APM Medical for Windows, be sure you know these names:

- Microsoft Windows computer name (referred to as the host name during the APM Medical installation).
- Directory name where you have installed Progress components. The Progress installation default is `C:\DLC`.

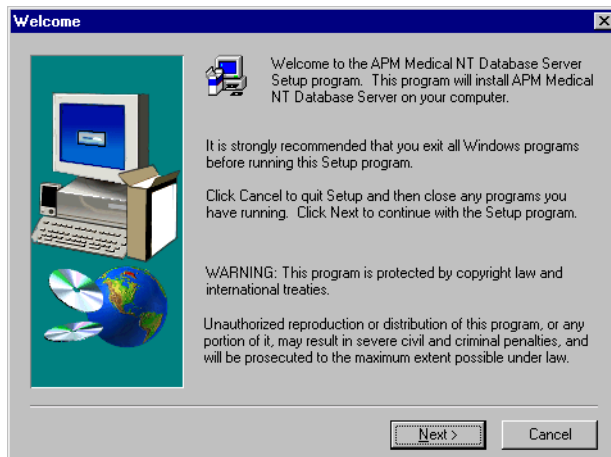
Load Database Server Files

Note Although figures used throughout this section are based on Windows NT Version 4.0 and APM Medical Version 2.0M02, the instructions are applicable to later versions of APM Medical and Windows as well.

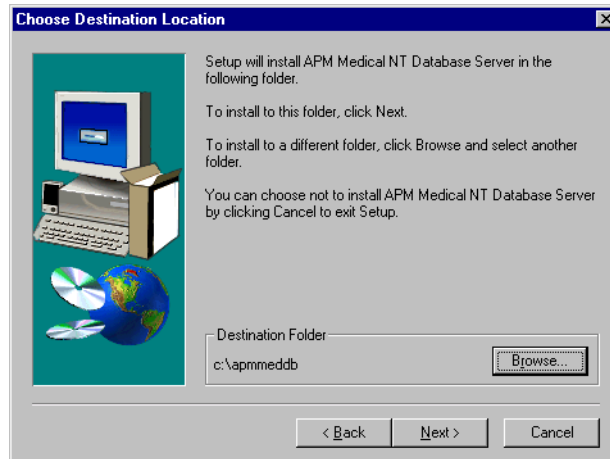
- 1 Run the `setup.exe` program using the method appropriate for your system.

CD-ROMDriveName:\setup.exe

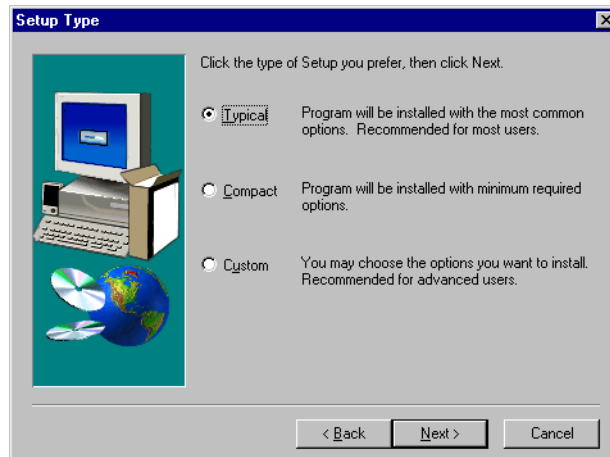
- 2 Click Next when the Welcome message window appears.



- 3 In the following window, click Next to accept the default destination where the APM Medical for Windows database files will be installed. Or click Browse to select another destination directory.

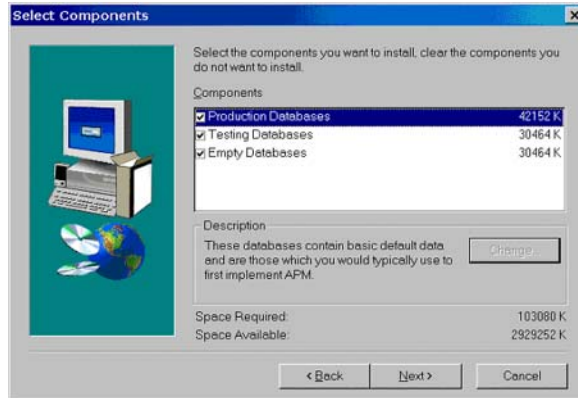


- 4 Select the setup type:
 - Typical: The default; installs all three APM Medical database sets—Production, Test, and Empty—on the database server.
 - Compact: Installs only the Production and Empty database sets.
 - Custom: Installs the specified database sets.

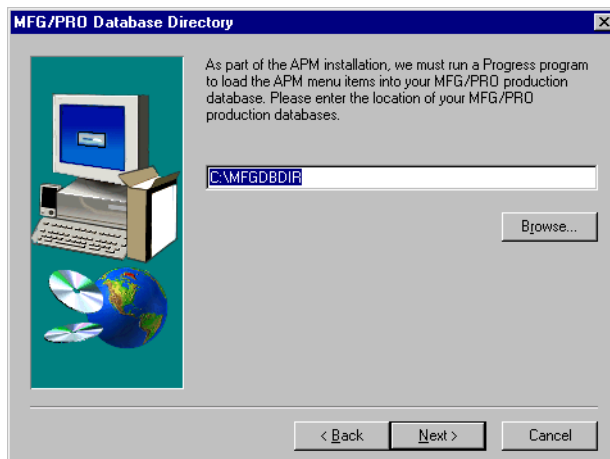


Selecting Custom displays the following window where you specify which components to install by clicking the boxes to add or remove the check mark. Click Next.

Note Production Databases are always automatically selected for the Custom installation.

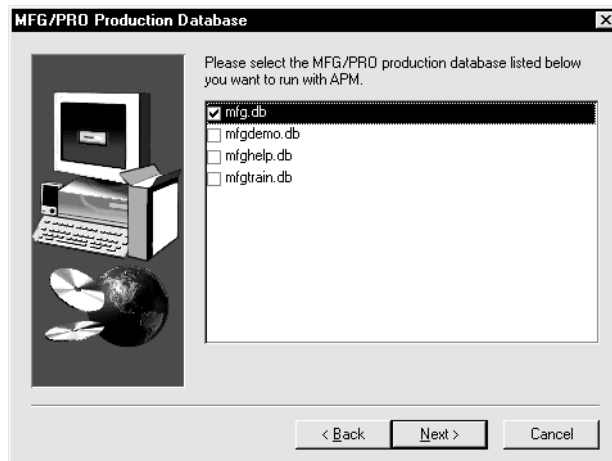


- 5 When the following window appears, enter the directory where your MFG/PRO production databases reside. Click Next to load the APM Medical menu items into the MFG/PRO production database; this procedure may take up to 30 minutes.

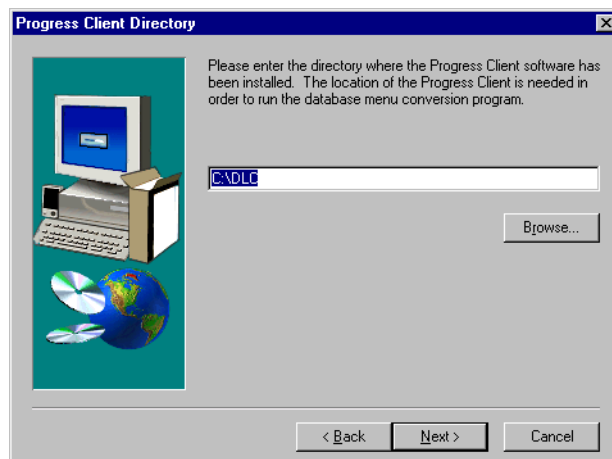


- 6 The next window displays the names of the MFG/PRO databases. Mark the checkbox of the database you want to run with APM Medical. Then click Next.

Important Because this procedure modifies your MFG/PRO production database, make sure that the database is shut down before proceeding.



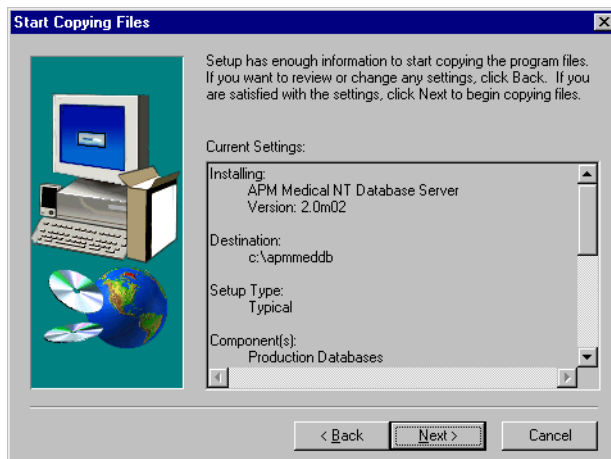
- 7 In the next window, enter the directory where the Progress ProVISION client software is installed. Then click Next.



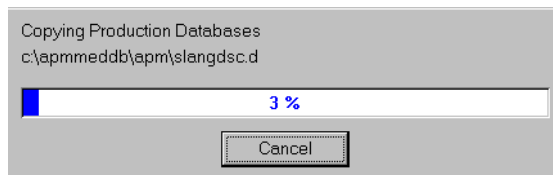
- 8 In the next window, enter the directory on the Windows file server where you installed the APM Medical file server client programs, as described in Chapter 2. Then click Next.



- 9 At the confirmation window, verify that the installation information is correct. Click Next to begin installing, or Back to make changes.



- 10 A status window shows the progress of the installation process.



Note The installation log window may show some error messages related to 7.20.x menu items. You can safely disregard these messages. Press the space bar to continue past the messages.

- 11 After the files are copied, the following window appears; click Finish.



Modify MFG/PRO Character Startup Parameters

Complete these steps to add APM Medical databases and parameters to the MFG/PRO startup parameters, update the MFG/PRO Production database set, and generate server scripts.

Update MFG/PRO Production Database Set Server View

A database set controls the connection parameters for creating character client and server startup scripts for MFG/PRO sessions. This section assumes that MFG/PRO is completely installed.

Follow these steps to add the APM Medical databases to the MFG/PRO Production database set:

- APM Medical production database
 - APM Medical transaction database
 - APM Medical medical database
 - APM Medical sales analysis database
- 1 Start MFG/UTIL on the MFG/PRO database server by double-clicking the MFG/UTIL icon in the MFG/PRO program group.
 - 2 In the MFG/UTIL main menu, choose the Configure menu and choose Database Set Maintenance.
 - 3 In the Database Set Configuration window, select the Production database set.
 - 4 Click New Server to display the Server View of Database Parameters window.

Database Parameters

Server View of Database Parameters:

Physical:

Description:

Server Params:

Service:

Path:

OK Cancel Help New Delete

- 5 Refer to the following table as you complete the Server View of Database Parameters window for the production database.

Physical:	apmdb
Description:	APM Medical production database
Server Parms:	-cpstream ibm850 -cpinternal iso8859-1 -cpcoll basic -L 8000 -c 250 -B 1000
Service:	apmdb
Path:	Enter the directory where the APM databases are to be stored; for example: \qad\apm

- 6 Click OK in the Server View of Database Parameters window.

- 7 With the Production database set highlighted, click New Server to display the Server View of Database Parameters window again.

- 8 Refer to the following table as you complete the Server View of Database Parameters window for the transaction database.

Physical:	apmtran
Description:	APM Medical transaction database
Server Parms:	-cpstream ibm850 -cpinternal iso8859-1 -cpcoll basic -L 8000 -c 250 -B 1000
Service:	apmtran
Path:	Directory where the APM databases are to be stored; for example: \qad\apm

- 9 Click OK in the Server View of Database Parameters window.

- 10 With the Production database set highlighted, click New Server to display the Server View of Database Parameters window again.

- 11 Refer to the following table as you complete the Server View of Database Parameters window for the medical database.

Physical:	apmmmed
Description:	APM Medical medical database
Server Parms:	-cpstream ibm850 -cpinternal iso8859-1 -cpcoll basic -L 8000 -c 250 -B 1000
Service:	apmmmed
Path:	Directory where the APM databases are to be stored; for example: \qad\apm

12 With the Production database set highlighted, click New Server to display the Server View of Database Parameters window again.

13 Refer to the following table as you complete the Server View of Database Parameters window for the sales analysis database.

Physical:	apmsale
Description:	APM Medical sales analysis database
Server Params:	-cpstream ibm850 -cpinternal iso8859-1 -cpcoll basic -L 8000 -c 250 -B 1000
Service:	apmsale
Path:	Directory where the APM databases are to be stored; for example: \qad\apm

14 Click OK in the Server View of Database Parameters window.

15 Count the number of databases displayed in the bottom frame and record for use in the step 17.

Number of production databases: _____

16 With the Production database set selected, select the Edit Set option.

17 Add *-h number of databases* at the beginning of the Start Params field (number of databases counted in step 15).

18 Click OK.

19 Click OK in the Database Set Configuration window.

Generate Server Scripts

1 From the MFG/UTIL Scripts menu, choose Generate Server Startup and Shutdown.

2 From Create Server Scripts, select Production.

3 Click OK.

4 Click Yes in response the Overwrite Previous Scripts? prompt. This launches APM Medical production, transaction, medical, and sales analysis database servers the next time you start MFG/PRO.

5 Exit from MFG/UTIL when finished.

Note As an alternative, you can also manage server startup and shutdown with the Progress ProControl Utility. ProControl is described in the MFG/PRO installation guide.

Set Up Services on the Database Server

Because MFG/PRO character clients need to connect to the APM Medical databases, edit the services file to include network services for the APM Medical database servers.

Locate your services file (usually in WINNT\SYSTEM32\DRIVERS\ETC) and use a text editor to add the services `apmdb`, `apmtran`, `apmmed`, and `apmsale`. Use any available socket number, but the names `apmdb`, `apmtran`, `apmmed`, and `apmsale` must be used. For example:

```
apmdb    4210/tcp    # APM Medical production database process
apmtran  4220/tcp    # APM Medical transaction database process
apmmed   4230/tcp    # APM Medical medical database process
apmsale  4240/tcp    # APM sales analysis database process
```

Any available socket

Network type

Record these settings; you will use them for the activities described in Chapter 5.



Chapter 4

Setting Up APM Medical for Windows

This chapter describes setting up the Windows file server and the PC clients for APM to run with MFG/PRO in Windows mode.

Character and Windows Programs **26**

Task Summary **26**

Load APM Medical Windows Files **26**

Compile APM Medical Windows Programs **28**

Set Windows Client PROPATH **32**

Character and Windows Programs

Since APM Medical is a character-based application, several APM Medical Windows programs are required in order for certain MFG/PRO functions to run in Windows.

For example, the MFG/PRO invoice post function, which can be run in either character or Windows mode, interacts with the APM Medical database. The APM Windows programs must have the same functionality as the character programs.

Task Summary

The main tasks are:

- Loading the APM Windows programs from the media
- Compiling the APM Windows programs
- Setting the client PROPATH

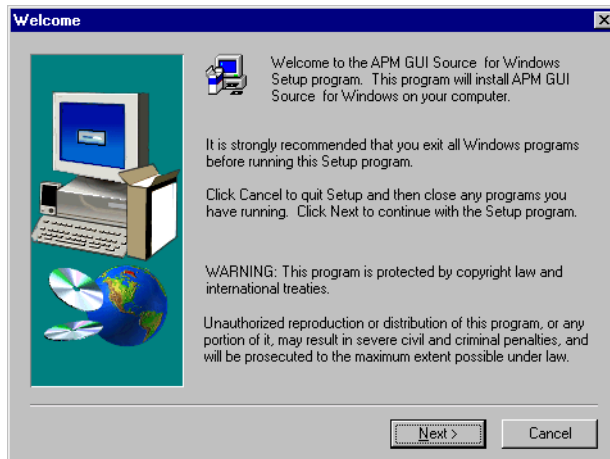
Load APM Medical Windows Files

These instructions assume you have already installed MFG/PRO eB or MFG/PRO eB2 for Windows on the file server. For the purposes of these instructions, G: is used to represent the network file server drive.

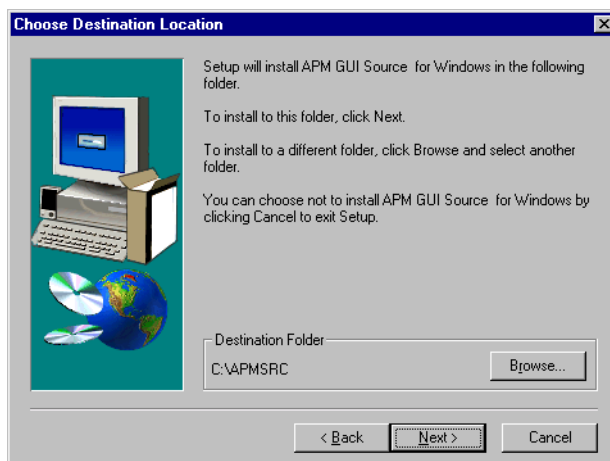
Note Although figures used throughout this section are based on Windows NT Version 4.0 and APM Medical Version 2.0M02, the instructions are applicable to higher versions of AMP Medical and Windows as well.

- 1 Start on a PC that is connected to your network file server and has a CD-ROM drive. Insert the APM Medical GUI CD-ROM into the CD-ROM drive.
- 2 Run the program `setup.exe` on the CD-ROM using the method appropriate on your system.

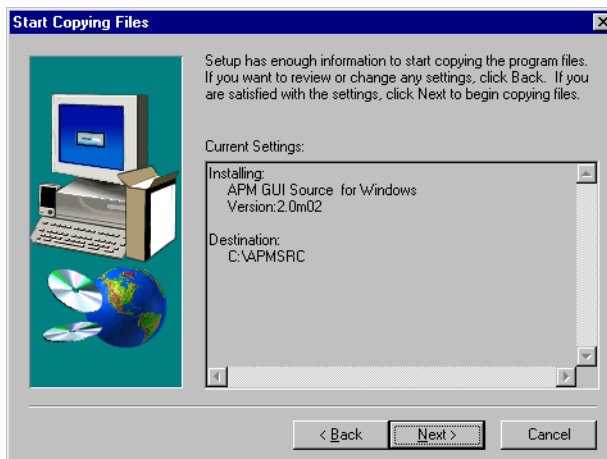
- 3 The following window advises you to quit all other applications before continuing the installation. Click Next to continue.



- 4 When the following window appears, examine the default destination directory. (The drive must be on the file server.) You can choose Browse if you want to change the directory or drive. Click Next to continue.



- 5 Confirm the installation information in the following window. Click Back to change the information, or Click Next to continue.



- 6 Click Finish in the Installation Complete window to complete the setup process.

Compile APM Medical Windows Programs

Create Client View of APM Compile Database Set

- 1 Start an MFG/UTIL Windows session by double-clicking the MFG/UTIL icon on the file server.
- 2 From the MFG/UTIL Configure menu, choose DB Set Maintenance.
- 3 Click New Set and complete the fields as follows.

Set Name:	APMCompile
Set Description:	APM Compile database set
Start Params:	Accept default
Active:	Yes
- 4 Click OK.
- 5 Select the APMCompile database set you just created.

6 Click New Client and complete the fields as follows.

Physical: mfgempty
 Logical: qaddb
 Description: Empty MFG/PRO database
 Connect Parms: -RO
 Connect Type: Client Server
 Host: *YourHostName*
 Service: *YourServiceName*

7 Click OK.**8** Click New Client and complete the fields as follows.

Physical: apmdb
 Logical: apmdb
 Description: APM Medical production database
 Connect Parms: -RO
 Connect Type: Client Server
 Host: *YourHostName*
 Service: apmdb

9 Click OK.**10** Click New Client and complete the fields as follows.

Physical: apmtran
 Logical: apmtran
Note: In APM Medical 2.4M05 for MFG/PRO eB2 SP5 or higher, this should be trmdb.
 Description: APM Medical transaction database
 Connect Parms: -RO
 Connect Type: Client Server
 Host: *YourHostName*
 Service: apmtran

11 Click OK.**12** Click New Client and complete the fields as follows.

Physical: apmmmed
 Logical: apmmmed

Description: APM Medical medical database
Connect Parms: -RO
Connect Type: Client Server
Host: *YourHostName*
Service: apmmmed

13 Click OK.

14 Click New Client and complete the fields as follows.

Physical: apmsale
Logical: apmsale
Description: APM Medical sales analysis database
Connect Parms: -RO
Connect Type: Client Server
Host: *YourHostName*
Service: apmsale

15 Click OK.

16 Click OK in the Database Set Configuration window.

Generate Scripts

- 1** From the MFG/UTIL Scripts menu, choose Generate Server Startup and Shutdown.
- 2** From Create Server Scripts, select APM Compile.
- 3** Click OK.
- 4** Click Yes in response to the Overwrite Previous Scripts? prompt. This launches the APM Medical production, transaction, medical, and sales analysis databases the next time you start MFG/PRO.
- 5** Exit from MFG/UTIL when finished.
- 6** Use the script generated in step 1 to start all databases required for the compile.

Run Compile Procedure

- 1 Select the Program menu and choose Compile Procedure Files.

The screenshot shows a dialog box titled "Choose Files to Compile". It has two main sections: "Source Directory" and "Options".

- Source Directory:** A text box contains "g:\apmsrc\xrc" with a "Choose..." button to its right.
- Radio Buttons:**
 - All files in the source directory
 - Contents of the work file
- Work File Name:** A text box contains "utcompil.wrk" with a "Choose..." button to its right.
- Resume previous compile:** An unchecked checkbox.
- Options:**
 - Save new .r files
 - Destination directory:** A text box contains "g:\apmsrc".
 - Use this database set:** A dropdown menu is set to "APMCompile".
 - Compile Propath:** A text box contains "g:\apmsrc\xrc,g:\apmsrc\xrc\si".

At the bottom of the dialog are three buttons: "Compile", "Cancel", and "Help".

- 2 In the Source Directory field, enter the name of the *APM Medical parent directory* created in step 4 on page 27. Add the *xrc* directory; for example:

```
g:\apmsrc\xrc
```

- 3 Select the All files in the source directory radio button.
- 4 Check the Save new .r files option.
- 5 Set Destination Directory to the *APM Medical parent directory*; for example:

```
g:\apmsrc
```

- 6 Use the APMCompile database set.

- 7 Set the Compile Propath; for example:

```
.,g:\apmsrc\xrc,g:\APMInstallDir\us\xrc,  
g:\MFGPROInstallDir\us\xrc,g:\APMInstallDir\xrc
```

Note The `\APMInstallDir\xrc` directory must come at the *end* of the PROPATH.

- 8 Click Compile.

- 9 In the Source Directory field, enter the name of the *APM Medical parent directory* created in step 4 on page 27. Add the `us\xrc` directory; for example:

```
g:\apmsrc\us\xrc
```

- 10 Click Compile.
- 11 When compile is complete, close the log window.
- 12 Exit MFG/UTIL.

Set Windows Client PROPATH

- 1 Use a text editor to open `Progress.vga` or `Progress.svg` in the Windows client working directory:
 - `Progress.vga` is for screen resolutions of 640 x 480.
 - `Progress.svg` is for screen resolutions of 800 x 600.
- 2 In each of the two lines labeled PROPATH, add the path to the APM Medical file server.
- 3 In each of the two lines labeled PROPATH, move the elements so that the path to the APM Windows install directory is before the MFG/PRO install directory.

```
...,g:\apmsrc, ...,g:\MFGPROInstallDir
```



Chapter 5

Setting Up Win32 Character Clients

This chapter explains how to set up Win32 character clients for APM Medical for Windows.

Task Summary **34**

Load Files from the Win32 File Server **34**

Modify MFG/PRO Character Client Startup Parameters **36**

Modify the Services File on Client PCs **41**

Task Summary

Important Each APM Medical for Windows Win32 client computer must already have the Win32 MFG/PRO character client. Consult appropriate MFG/PRO installation documentation.

In this procedure, modify each MFG/PRO client installation to recognize APM Medical. Major steps performed on each client computer include:

- Run `setup.exe`, which was loaded onto the APM Medical for Windows file server during the procedure described in Chapter 2.
- Use MFG/UTIL to set client startup parameters for APM Medical databases.

These instructions assume:

- You have met the system requirements for client PCs, outlined in Chapter 1.
- Your network is operating.
- Progress client networking software is installed on each client PC or is accessible from a network drive. For MFG/PRO Win32 character clients, you must also have Progress Win32 Intel Character Client software installed.
- Your MFG/PRO database server is set up.

Important Be sure to exit all other programs—especially MFG/PRO—before setting up each client computer.

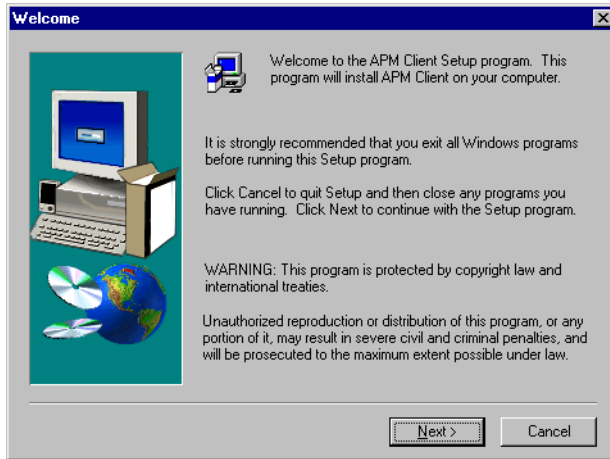
Load Files from the Win32 File Server

Note Although figures used throughout this section are based on Windows NT Version 4.0 and APM Medical Version 2.0M02, the instructions are applicable later versions of APM Medical and Windows as well.

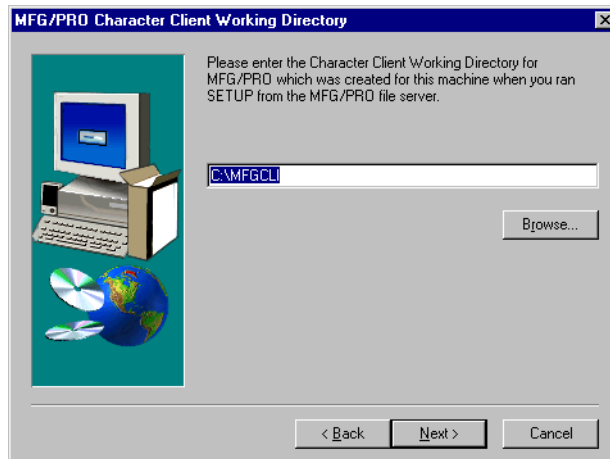
- 1 Start on any PC connected to the network file server.
- 2 Double-click the `setup.exe` program, which was installed along with the APM Medical file server programs as described in Chapter 2.

NetworkDriveName:\APM Client File Server\setup.exe

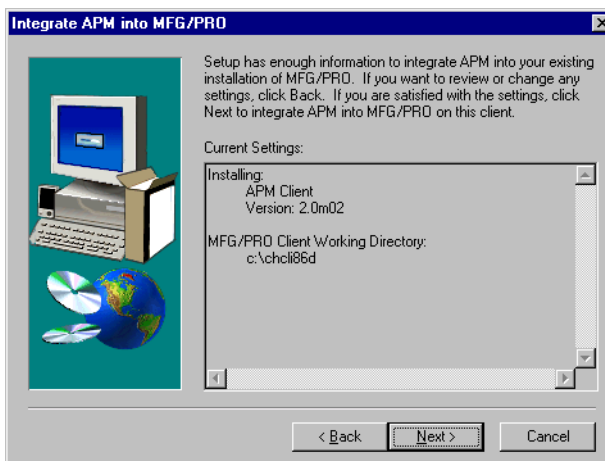
- 3 The welcome message window appears. Click Next to continue.



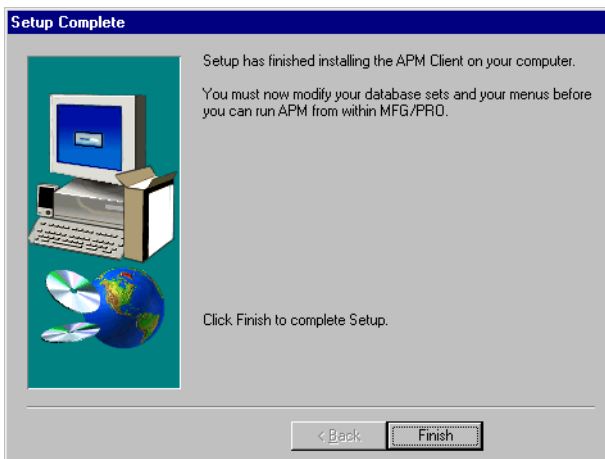
- 4 Accept the default MFG/PRO character client working directory or specify a different directory; use the Browse button to search the directories. Click Next to continue.



- 5 At the confirmation window, verify that the installation information is correct. Click Next to begin installing, or click Back to make changes.



- 6 Click Finish to complete the setup process.



Modify MFG/PRO Character Client Startup Parameters

Complete these steps to add APM Medical databases and parameters to the MFG/PRO character startup parameters: update the Production database set, set the PROPATH, and generate new startup and shutdown scripts.

Update MFG/PRO Production Database Set Client View

These steps create client views for APM Medical databases in the MFG/PRO Production database set:

- APM Medical production database
 - APM Medical transaction database
 - APM Medical medical database
 - APM Medical sales analysis database
- 1 Start MFG/UTIL on a PC by double-clicking the MFG/UTIL icon in the MFG/PRO program group or selecting it from the Start menu.
 - 2 In the MFG/UTIL main menu, select the Configure menu and choose DB Set Maintenance.
 - 3 In the Database Set Configuration window, select the Production database set.
 - 4 Click New Client to display the Client View of Database Parameters window.

Client View of Database Parameters:

Physical:

Logical:

Description:

Connect Params:

Connection Type:

Host:

Service:

OK Cancel Help New Delete

- 5 Refer to the following table for appropriate field entries for the production database. Enter your actual APM database server host name in the Host field.

Physical: apmdb
Logical: apmdb
Description: APM Medical production database
Connect Parms:
Connection Type: Client Server
Host: *YourHostName*
Service: apmdb

- 6 Click OK in the Client View of Database Parameters window.
- 7 In the Database Set Configuration window, with the Production database set selected, click New Client to display the Client View of Database Parameters window again.
- 8 Refer to the following table for appropriate field entries for the transaction database. Enter your actual APM database server host name in the Host field.

Physical: apmtran
Logical: apmtran
Note: In APM Medical 2.4M05 for MFG/PRO eB2 SP5 or higher, this should be trmdb.
Description: APM Medical transaction database
Connect Parms:
Connection Type: Client Server
Host: *YourHostName*
Service: apmtran

- 9 Click OK in the Client View of Database Parameters window.
- 10 In the Database Set Configuration window, with the Production database set selected, click New Client to display the Client View of Database Parameters window again.
- 11 Refer to the following table for appropriate field entries for the medical database. Enter your actual APM database server host name in the Host field.

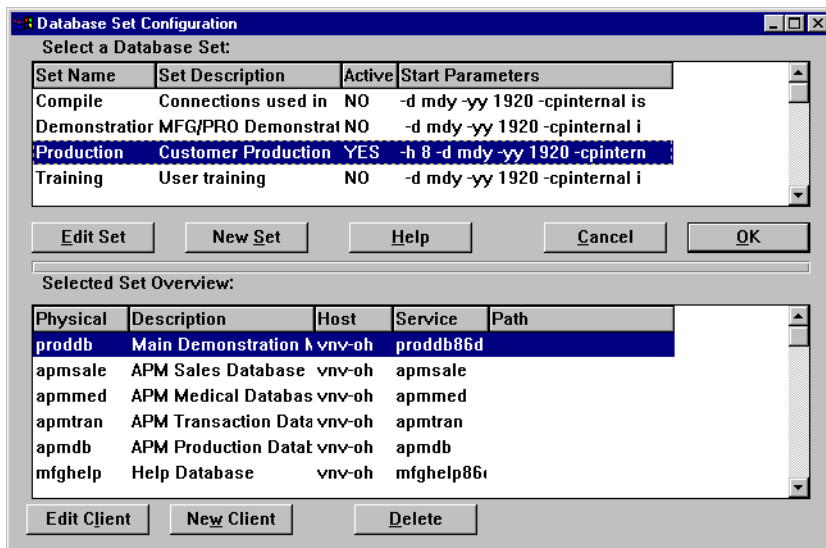
Physical: apmmmed
 Logical: apmmmed
 Description: APM Medical medical database
 Connect Parms:
 Connection Type: Client Server
 Host: *YourHostName*
 Service: apmmmed

- 12 Click OK in the Client View of Database Parameters window.
- 13 In the Database Set Configuration window, with the Production database set selected, click New Client to display the Client View of Database Parameters window again.
- 14 Refer to the following table for appropriate field entries for the sales analysis database. Enter your actual APM database server host name in the Host field.

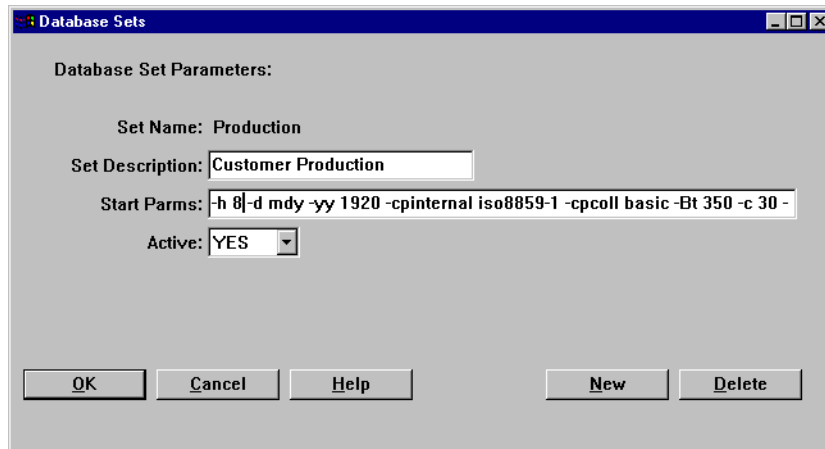
Physical: apmsale
 Logical: apmsale
 Description: APM Medical sales analysis database
 Connect Parms:
 Connection Type: Client Server
 Host: *YourHostName*
 Service: apmsale

- 15 Click OK in the Client View of Database Parameters window.

The following figure shows an example of a completed production database set.



- 16 Count the number of databases in this set and record for use in step 18.
 Number of production databases: _____
- 17 With the Production database set selected, click Edit Set to display the Database Sets window.
- 18 Add *-h number of databases* at the beginning of the Start Params field (*number of databases* was derived in step 16).



- 19 Click OK in the Database Sets window.
- 20 Click OK in the Database Set Configuration window.

Generate Client Scripts

- 1 In the MFG/UTIL main menu, select the Scripts menu and choose Generate User Startup.
- 2 Select the database set that you just edited and click OK.
- 3 On the File menu, select Save Default mfgutil.ini. At the Save to Administration Directory prompt, click Yes.
- 4 When the MFG/UTIL main menu reappears, choose Exit from the File menu.

Set Character Client PROPATH

- 1 Use a text editor to open `progress.chr` in the character client working directory.
- 2 In each of the two lines labeled PROPATH, add the path to the APM Medical file server.
- 3 In each of the two lines labeled PROPATH, change the order of the elements so that the APM install directory comes before the MFG/PRO install directory.

```
...,g:\APMInstallDir, ...,g:\MFGPROInstallDir
```

Modify the Services File on Client PCs

For each client workstation to be configured, you must edit the `services` file. The services names and TCP/IP addresses and port numbers must match those specified when you installed APM on the file server, as described under “Set Up Services on the Database Server” on page 24.



Chapter 6

Completing the Installation

Use the instructions in this chapter to complete the installation and integrate APM Medical with MFG/PRO so that users will be able to run APM Medical from the MFG/PRO menu.

Sales Order Control **44**

Pricing Control **45**

APM Control File **45**

Restart Applications **45**

Sales Order Control

- 1 Start an MFG/PRO client session in character mode.
- 2 In MFG/PRO Sales Order Control (7.1.24), set the Integrate with APM field to Yes.

Note This field is labeled Integrate with TrM in MFG/PRO eB2 SP3 and higher.
- 3 Press Go to save this change. Then press End until you have exited Sales Order Control.

```
sosopm.p b+                7.1.24 Sales Order Control File                11/21/97

1. Qty Available to Allocate = Qty Available - Qty Allocated
2. Qty Available to Allocate = Qty Available - Qty Allocated + Qty On Order
3. Qty Available to Allocate = Qty Available - Qty Required
4. Qty Available to Allocate = Qty Available - Qty Required + Qty On Order
Which calculation should be used for Qty Available to Allocate: 1
Allocate Sales Order Lines due in Days: 1 (0 for no allocations)
Limit Allocations to Avail to Allocate: yes Detail Allocations: no

Pick Only Allocated Lines: yes          Sales Order Prefix: SO
Are Sales Orders Printed: yes           Next Sales Order: 14391
Keep Booking History: yes              Invoice Prefix: IU
Keep Invoice History: yes               Next Invoice: 300481
Shipping Lead Time: 1                  Integrate with AR: yes
Company Address:                       Integrate with SA: yes
Sales Order Header Comments: no        Integrate with APM: yes
Sales Order Line Comments: no          Confirmed Orders: yes
Print Only Lines to Invoice: yes        Fiscal Start Month: 1
Ln Format S/M: single                   F.O.B.:


```

Set this field to Yes to complete the installation process.

This will enable you to access APM Medical from an MFG/PRO character session. Further initial setup instructions are provided in Chapter 4 of the *User Guide: Trade Management*.

Pricing Control

In MFG/PRO Pricing Control (1.10.1.24), enter a promotions prefix and set the QO and SO Price by Line fields to Yes.

APM Control File

APM must be integrated with MFG/PRO prior to adding or updating any records.

- 1 In MFG/PRO, go to APM Control File Maintenance (7.20.19.1).
- 2 The Control ID defaults to 1. Press Go once to enter the program.
- 3 Press Page Down to access page 10.
- 4 Change MFG/PRO? to Yes to integrate with MFG/PRO.
- 5 Press F1 to save; press F4 to exit.

Restart Applications

Restart both APM Medical and MFG/PRO so that the MFG/PRO startup routine can run the APM Medical interface program.

