

# Release Notes: The Planner Version 4.0

Version 4 of The Planner is designed to support MFG/PRO eB2.1, which features multiple domains. This document summarizes differences in the user interface that you will see when The Planner is interfaced with MFG/PRO eB2.1.

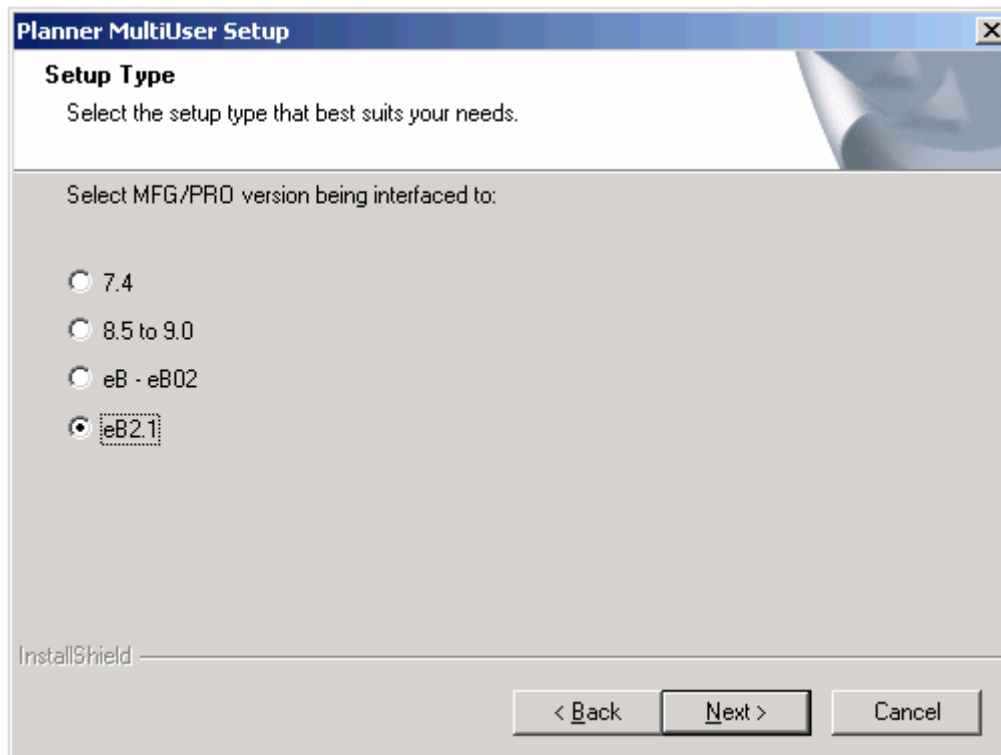
**Note** *Installation Guide: The Planner* and *User Guide: The Planner* for version 3.43, dated May 2003, describe how to install and use the product. Those documents have *not* been updated to reflect the interface with MFG/PRO eB2.1.

For information on how domains are used in MFG/PRO eB2.1, see *User Guide: MFG/PRO eB2.1 New Features*.

## Installation

### Windows Installation

A new “eB2.1” option is available in the following screen. Choosing this option will install programs compatible with domain functionality.



Additionally, note the following changes to the Windows installation procedure described in the installation guide:

- The installation screen does not automatically display when you insert the product CD. Use Windows Explorer to view the contents of the CD.

- To install Scheduler, open the `planner` directory on the CD and double-click `setup.exe`.
- To install MultiUser Planner, open the `multiuser` directory on the CD and double-click `setup.exe`.
- Adobe Acrobat Reader is not provided with the CD. Be sure you have this application installed in order to view the install and user guides.

## Unix Installation

eB21 directories can be found in the following locations

`<unixinstalldir>/eB21`

`<unixinstalldir>/planner/export/mfg/eB21`

`<unixinstalldir>/planner/export/eB21`

`<unixinstalldir>/planner/mfg/eB21`

`<unixinstalldir>/src/triggers/eB21`

Copy the files from the eB21 directory to its immediate parent directory and compile to get the programs to work with eB2.1.

## Planner Export Database

Data exchange between MFG/PRO eB2.1 and The Planner is supported by modifications to the export database `plexport.db`.

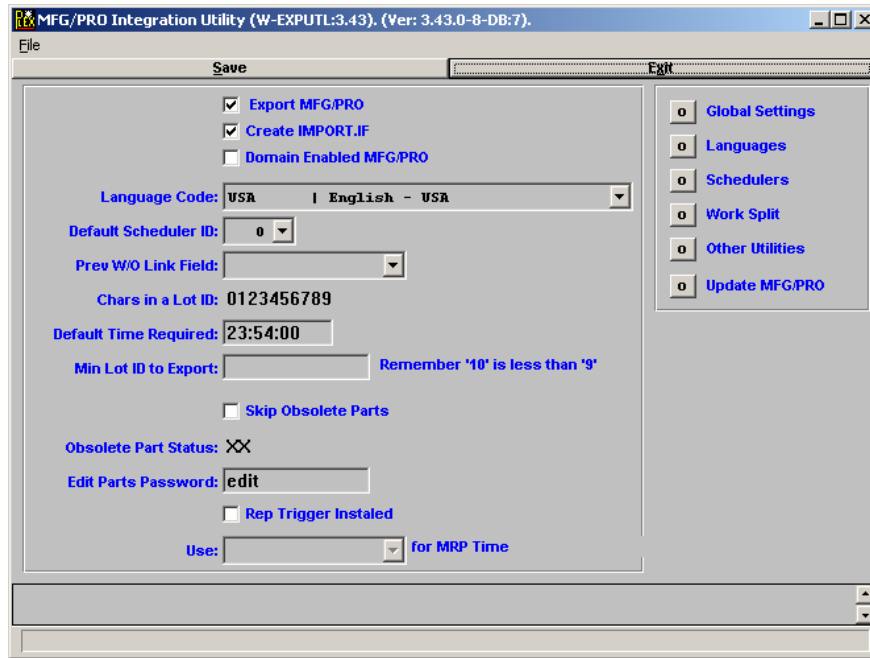
**Important** No changes have been made to the MFG/PRO database itself to support the interface with The Planner.

Table	Field	Description
ssystems	domact	Logical field indicating if The Planner is being used with the domain version of MFG/PRO
sschedlr	domain	Domain ID linked to scheduler

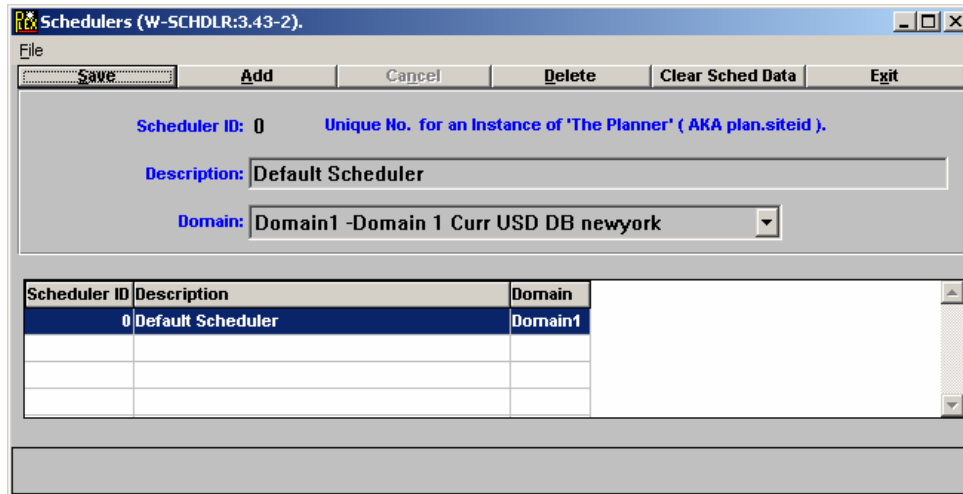
## MFG/PRO Interface Utility Screens

The additional fields described in this section are available only if “eB21” was selected as the MFG/PRO version during the installation process.

**MFG/PRO Integration Utility:** A new “Domain Enabled MFG/PRO” checkbox has been added to this screen. Select this option to enable domain-related functionality.



**MFG/PRO Integration Utility >> Schedulers:** A new drop down listing all the “active” and “non-system” domains in the MFG/PRO database has been added. This will enable every scheduler to be linked to a domain.



**Other Screens:** A display field “Domain” has been added to several screens to provide context to the data being created/updated/deleted, as shown in the following example.

Split Order	Send To Scheduler	From Site	To Site	From Item Type	To Item Type	From Product Line	To Product Line	F
0	0	0	ZZZZZZ					

Screens with the Domain field added include the following:

- MFG/PRO Integration Utility >> Work Split ()
- MFG/PRO Integration Utility >> Work Split >> Create/Edit Custom Export Parameters
- MFG/PRO Integration Utility >> Work Split >> Create/Edit Custom Export Parameters >> Repetitive & Adv Rep Interface
- MFG/PRO Integration Utility >> Work Split >> Create/Edit Custom Export Parameters >> Customer
- MFG/PRO Integration Utility >> Work Split >> Create/Edit Custom Export Parameters >> Work Order
- MFG/PRO Integration Utility >> Work Split >> Create/Edit Custom Export Parameters >> Stage
- MFG/PRO Integration Utility >> Work Split >> Create/Edit Custom Export Parameters >> Route (op)
- MFG/PRO Integration Utility >> Work Split >> Create/Edit Custom Export Parameters >> Machine
- MFG/PRO Integration Utility >> Work Split >> Create/Edit Custom Export Parameters >> Item Route (op)
- MFG/PRO Integration Utility >> Work Split >> Create/Edit Custom Export Parameters >> Repetitive & Adv Rep Interface >> Job Extra Data

- MFG/PRO Integration Utility >> Work Split >> Create/Edit Custom Export Parameters >> Repetitive & Adv Rep Interface >> Stage Extra Data
- MFG/PRO Integration Utility >> Work Split >> Create/Edit Custom Export Parameters >> Repetitive & Adv Rep Interface >> Operation Extra Data
- MFG/PRO Integration Utility >> Work Split >> Create/Edit Custom Export Parameters >> Sequence Label
- MFG/PRO Integration Utility >> Work Split >> Create/Edit Custom Export Parameters >> Sequence Data
- MFG/PRO Integration Utility >> Work Split >> Create/Edit Custom Export Parameters >> Sequence Value
- MFG/PRO Integration Utility >> Other Utilities >> File Maintenance >> Work Order Maintenance

## Export Program Changes

The export programs have been modified to query the MFG/PRO database for the domains linked to registered schedulers.

## Planview

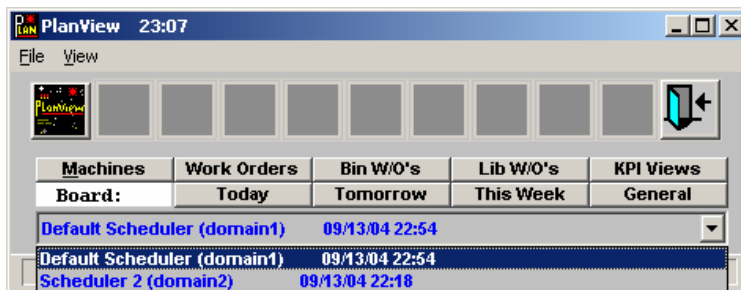
To support multiple domain functionality in the multi-user interface, changes have been made to the Planview database `planview.db` as well as the screens.

### Database

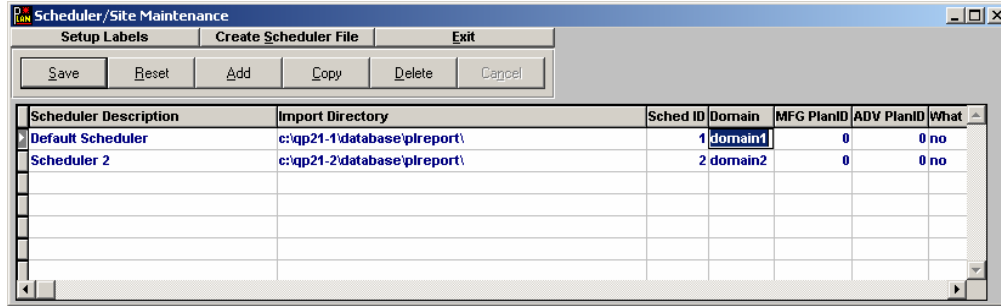
Table	Field	Description
siteinfo	domain	Domain ID linked to the site

### Screens

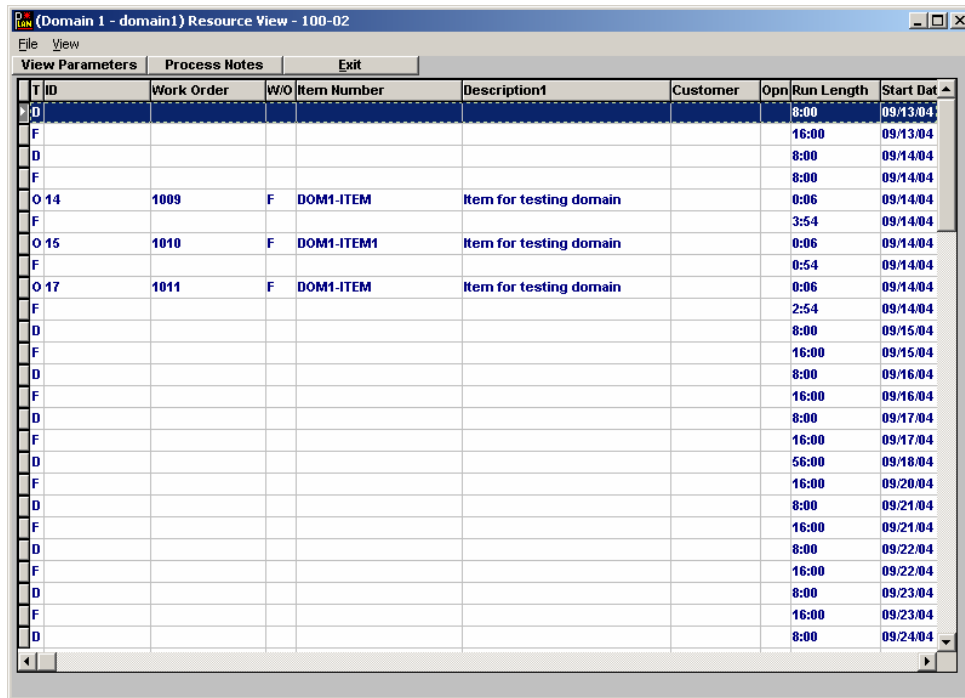
**Planview:** The domain field has been added to Scheduler Description in the drop down.



**File >> System Settings >> Scheduler/Site Maintenance:** An editable domain field has been added to link the scheduler/site to it.



**Additional Screens:** Domain ID has been added to the window title of the several screens, as shown in the following example.



Screens that show the domain in the title bar include the following:

- Planview >> Machines
- Planview >> Work Orders
- Planview >> Today
- Planview >> Tomorrow
- Planview >> This Week
- Planview >> KPI Views >> Late jobs
- Planview >> KPI Views >> Planner on Time
- Planview >> KPI Views >> Planned Run
- Planview >> KPI Views >> Planned Utilization

## MFG/PRO Update Programs

Several changes have been made to the CIM file generation and MFG/PRO update routines:

- A CIM file is generated for each domain for work order and repetitive updates. The naming convention for work order CIM files is:

*DOMAINID.plupdate.cim*

The naming convention for repetitive CIM files is:

*DOMAINID.plupdadv.cim*

- New input files *plcrldcm.inp* and *plcrldc2.inp* are now used instead of *pllodcim.inp* and *pllodcm2.inp*.
- New programs *p-crldf1.p* and *p-crldf2.p* are used to process the new input files *plcrldcm.inp* and *plcrldc2.inp* respectively.
- In Windows environments, *plupdate.ini* is modified to include parameters for executing *p-crldf1.p* and *p-crldf2.p*.

## Navigation Change

The label on the “Cancel” button in previous Scheduler versions has been changed to “Exit” throughout to make it consistent with Planner MultiUser functions as well as MFG/PRO.

**Note** This change applies to The Planner version 4.0 regardless of which version of MFG/PRO you are using.