



QAD Enterprise Applications
Enterprise Edition

Installation Guide **QAD Serialization, Item Attributes, and Quality Control**

Introduction
Installation
Package Contents

70-3344-2.7.1-Rev3
Serialization, Item Attributes, and Quality Control 2.7.1
QAD Enterprise Applications Enterprise Edition 2017
November 2019

This document contains proprietary information that is protected by copyright and other intellectual property laws. No part of this document may be reproduced, translated, or modified without the prior written consent of QAD Inc. The information contained in this document is subject to change without notice.

QAD Inc. provides this material as is and makes no warranty of any kind, expressed or implied, including, but not limited to, the implied warranties of merchantability and fitness for a particular purpose. QAD Inc. shall not be liable for errors contained herein or for incidental or consequential damages (including lost profits) in connection with the furnishing, performance, or use of this material whether based on warranty, contract, or other legal theory.

This document contains trademarks owned by QAD Inc. and other companies.

Copyright © 2019 by QAD Inc.

Serialization_IG_v0271.pdf/r9m

QAD Inc.

100 Innovation Place
Santa Barbara, California 93108
Phone (805) 566-6000
<http://www.qad.com>

Contents

SAQ Installation Guide Change Summary	v
Chapter 1 Introduction	1
Overview	2
Requirements	2
Software and Environment	2
Unzip Utilities	2
Installation Package	2
Before You Begin	2
Patches/Hot Fixes and Customized Programs	2
SAQ and QAD Automation Solutions: Data Collection Transactions ..	3
Impact Analysis	3
Impact Analysis Steps	3
Chapter 2 Installation	5
Pre-Installation Procedure	6
Installation Considerations	6
SAQ and QAD Add-On Compatibility	6
MSW/PSW	7
Overlaps	7
Installation Procedure	7
Verify the Installation	8
Post-installation Tasks	10
Verify that controllers.xml Was Updated	10
Add POShipperMaint to controllers.xml File	11
Merge Existing Patches and Customizations	11
Add Enterprise Item Attributes to Home Process Map (Optional) ..	11
Compile QAD Enterprise Applications	12
Load E-Signature Seed Data	12
Checking and Installing Data Collection Transactions	12
Restart Anti-virus	13
Appendix A Package Contents	15
SAQ v2.7.1 Package Contents - 2015EE	16
SAQ v2.7.1 Package Contents - 2016EE	35

SAQ v2.7.1 Package Contents - 2017EE 54



SAQ Installation Guide Change Summary

The following table summarizes significant differences between this document and previous versions.

Date/Version	Description	Reference
November 2019/SAQ 2.7.1-Rev3	Added new section: Before You Begin	page 2
	Added new post installation step: Checking and Installing Data Collection Transactions	page 12
May 2018/SAQ 2.7.1-Rev2	Updated Pre-Installation Procedure to include references to kbase articles AB-15388 and AB-15593	page 6
	Updated Pre-Installation Procedure to include update instructions for SAQ 2.6.0 and 2.7.0	page 6
April 2018/SAQ 2.7.1-Rev1	Updated the Software and Environment requirements	page 2
	Updated SAQ-MSW/PSW compatibility table to include 2015EE	page 7
	Updated Installation Procedure	page 7
	Updated Appendix A: Package Contents to include 2015EE and 2016EE package contents	page 15
March 2018/SAQ 2.7.1	Updated the Software and Environment requirements	page 2
	Updated Patches and Customized Programs statement	--
	Updated Installation Procedure	page 7
	Added a verification step to the Verify Installation section	page 8
	Removed Load QRF Reports section from Post Installation Tasks	--
March 2018/SAQ 2.7-Rev1	Updated the Software and Environment requirements	page 2
	Added "Load QRF Reports" section to Post Installation Tasks	--
	Added Appendix A: Package Contents	page 15

Date/Version	Description	Reference
March 2018/SAQ 2.7	Updated the Software and Environment requirements	page 2
	Update the Pre-Installation Procedure	page 6
	Updated the SAQ and EE Compatibility section	page 6
	Updated SAQ-MSW/PSW compatibility table	page 7
	Updated Installation Procedure	page 7
	Updated Verify Installation section	page 8
	Numerous changes to Post-Installation Tasks	page 10
	Removed instructions to install SAQ using QDT	--
	Removed Install Label Print Package section from Post Installation Tasks	--
	Removed Upgrade Quality Browse Definition section from Post Installation Tasks	--
	Removed Configure QXtend Support section from Post Installation Tasks	--
	Removed Chapter 3: Upgrading SAQ	--
	Removed Appendix A: Sample Installation Messages	--
June 2017/SAQ 2.6.1-Rev2	Updated the SAQ and EE Compatibility table	--
May 2017/SAQ 2.6.1-Rev1	Added information that SAQ 2.6.1 is compatible with 2015EE	--
April 2017/SAQ 2.6.1	Added section: Upgrading to SAQ 2.6.1	--
November 2016/SAQ 2.6-Rev2	Added section to Post Installation Tasks: Install Label Print Package	--
	Added Chapter 03: Upgrading SAQ	--
April 2016/SAQ 2.6-Rev1	Added YAB pre-installation steps	page 6
	Added steps to install SAQ in a cloud environment with YAB	--
	Added YAB related post-installation steps	page 10
March 2016/SAQ 2.6	Updated the Software and Environment requirements	page 2
	Moved steps in Before you Begin section to Pre-Installation Procedure section	page 6
	Removed steps from Verify Installation to check 1.15 menus and “Maintain” collections	page 8
	Added steps to verify SAQ 2.6 was installed	page 8
	Removed steps (Add Merged Files, Install Periodic Costing, Install Label Print package) from Post-Installation Tasks	page 10
	Added the Copy E-Signature Seed Data section	--
	Updated the Installation Messages listing	--

Date/Version	Description	Reference
August 2015/Serialization 2.5	Updated the Software and Environment requirements	page 2
	Added a new step to Before You Begin	--
	Revised the SAQ and QAD Add-On Compatibility section	page 6
	Updated Table 2.1 “SAQ Install Package-MSW/PSW Compatibility”	page 7
	Revised step 9 of Installation Procedure	page 7
	Revised step 10 of Installation Procedure	page 7
	Added a new step to Verify the Installation	page 8
	Install Periodic Costing section added to Post-installation Tasks	--
	Deleted the Run assign_phantom.p section	page 12
	Revised the Install Label Print Package section	--
	Revised step 3 of Verify controllers.xml was Updated	page 10
	Revised a step of Compile QAD Enterprise Applications	--
	Revised introduction to Configure QXtend Support	--
	Added the Upgrade Quality Browse Definition section	page 12
	Revised the Installation Messages overview	--
Updated the Installation Messages listing	--	
April 2015/Serialization 2.4.1	Numerous minor revisions	---
	Revised the software and environment requirements	page 2
	Revised the version numbers in “SAQ Install Package-MSW/PSW Compatibility” table	page 7
	Added the Run assign_phantom.p section to Post-installation Tasks	--
	Revised the Verify controllers.xml was Updated section	page 10
	Revised the Configure QXtend Support section	--
	Updated the Installation Messages section	--
January 2015/Serialization 2.4-rev 1	Revised the Unzip Utilities section	page 2
	Revised the Before You Begin section	--
November 2014/Serialization 2.4	Updated the Software and Environment requirements	page 2
	Revised the Pre-installation Procedure section	page 6
	Added the Verify the Installation section	page 8
	Deleted the Run shippingHistoryLoad.p section	--
	Added the Add Merged Files section	--
	Added the Verify controllers.xml was Updated section	page 10
	Added the Add Enterprise Item Attributes to Home Process Map section	page 11
	Revised the Compile QAD Enterprise Applications section	page 12
	Revised the Configure QXtend Support section	--

Date/Version	Description	Reference
July 2014/Serialization 2.3.1	SAQ 2.3 install guides for 2012.1 EE, 2013.1 EE, and 2014 EE combined into one guide	---
	Added text regarding file overlaps and compatibility between EE, SAQ 2.3.1, and other QAD Add-Ons,	page 6
	Added qxo to the \$QXO_SERVER location	--
	Added Run shippingHistoryLoad.p to Post-installation Tasks	--
	Added Install Label Print Package to Post-installation Tasks	--
	Revised guide to say that for 2014 EE you can use the compile list in the SAQ package or you can create a custom list	--
	Moved the sample installation messages to a separate appendix	--
	Updated Installation Messages	--
March 2014/Serialization 2.3	Not applicable - initial version of guide	---

Introduction

This chapter discusses the following Serialization, Item Attributes, and Quality Control (SAQ) installation topics:

Overview 2

Describes the chapter contents.

Requirements 2

Describes system and software prerequisites for SAQ installation.

Installation Package 2

Describes the contents of the installation package.

Before You Begin 2

Describes everything that must be taken into consideration before installing SAQ.

Overview

This chapter discusses Serialization, Item Attributes, and Quality Control (SAQ) installation requirements, the installation package, and pre-installation preparations.

Requirements

The following sections describe the software and environment and other requirements to install QAD SAQ.

Software and Environment

To install SAQ v2.7.1, you must have the following installed:

- 2015EE (Cloud only), 2016EE or 2017EE (Cloud and On-Premise)
- .NET UI 3.1 or above.
Note .NET UI 3.1 is included with 2015 EE.
- Java Runtime Environment (JRE) 1.6 or above.
- YAB 1.6 or above

Unzip Utilities

The QAD Store (<http://store.qad.com>) provides product downloads as compressed ISO files in .zip or .7z format. The .7z format is used to overcome a limitation that prevents the zipping of files larger than 2 GB.

To unzip .7z files, use the free 7-Zip utility. Windows, Linux, and UNIX versions of this utility are available from:

<http://www.7-zip.org>

Unzipping the compressed product file using the appropriate utility yields an uncompressed ISO file.

Installation Package

The SAQ 2.7.1 package contains all the components to install the software.

Note The *QAD Automation Solutions: Data Collection Installation Guide* can be found in the QAD document library:

<http://documentlibrary.qad.com/>

Before You Begin

Patches/Hot Fixes and Customized Programs

This package contains modifications to QAD programs.



- If you applied QAD patches and/or hot fixes, it is **your** responsibility to merge the QAD patch/hot fix changes after applying the installation package.
- If you have made customizations to QAD programs, it is **your** responsibility to merge your customizations with the modifications included in this package. QAD does not support customized programs.

SAQ and QAD Automation Solutions: Data Collection Transactions

If you have QAD Automation Solutions: Data Collection installed and are currently using the Data Collection transactions, please be aware that installing the new version of SAQ may affect how the transactions function. If you are upgrading SAQ, Data Collection transactions may need to be upgraded as well.

After installing SAQ, as part of the post installation steps it is required that you first check that the Data Collection transactions still function properly. If any Data Collection transactions do not function properly, you may need to import the SAQ 2.7.1 compatible transactions. For more information, see “Checking and Installing Data Collection Transactions” on page 12.

Impact Analysis

Before installing SAQ, it is recommended that you perform an impact analysis to determine which programs, patches/hot fixes, customizations, and other QAD software are affected by the upgrade/installation.

If SAQ is installed without performing a proper impact analysis, the following can occur:

- Data Collection transactions may not function properly or not at all.
- You may receive mismatched parameters when running the new version.
- Some functionality may not behave as expected.

When performing the impact analysis, the following must be considered:

- Is the source code encrypted?
If the code is encrypted, please contact QAD Services to perform the impact analysis. When performing the impact analysis, the code in the upgrade package will need to be compared to the code in the various patches or custom directory.
- Review the environments where SAQ will be installed (for example, Devl, Test, and Prod) and determine if these environments are the same. If these environments are different, you may need to perform a separate impact analysis on each environment.

Impact Analysis Steps

If there are multiple patch directories in an environment, they should all be included in the impact analysis.

- Review all the SAQ-related patches in the patch directories. To perform this step, you will need to view the source code.
 - Identify and remove any patches that have been fixed by the upgrade.

4 QAD Serialization, Item Attributes, and Quality Control Installation Guide

- Review the patches that are not in the upgrade and determine if there are any overlaps between those patches and the SAQ package. If there are overlaps, a merged version of the overlapping file will be required.
- Review any customizations that have been installed:
 - Determine if any customizations need to be upgraded as well.
 - Identify any customizations that are now in the new version of SAQ and determine if those customizations should be removed.

Any custom code that calls an SAQ routine that had a signature change in the new add-on now needs to be updated to use the updated signature.



Installation

This chapter describes QAD Serialization, Item Attributes, and Quality Control (SAQ) package installation and post-installation configuration.

Overview 6

Provides an overview of the installation process.

Pre-Installation Procedure 6

Covers a pre-installation warehouse module requirement and pre-installation for existing SAQ customers.

Installation Considerations 6

Describes important SAQ, Add-On, and MSW/PSW pre-installation considerations.

Installation Procedure 7

Provides step-by-step instructions for a Linux/UNIX SAQ package installation in a character environment.

Post-installation Tasks 10

Describes Serialization, Item Attributes, and Quality Control configuration following installation.

Overview

The following sections describe how to install the QAD Serialization, Item Attributes, and Quality Control (SAQ) package and how to configure the product after installation.

Pre-Installation Procedure

Perform the following actions before installing the SAQ package.

- 1 Search the QAD Support KnowledgeBase (<http://www.qad.com/erp/Support/>) for any known issues related to SAQ installation. If you find any issues, follow the instructions in the KnowledgeBase in addition to the instructions in this guide.
- 2 Back up your databases and supporting environments. This includes backing up your mfg and admin “empty” databases.
- 3 Back up the `controllers.xml` file located in your `PROPATH`.
- 4 If the cloud environment has not been updated with the new storage area mapping, the following line needs to be added to the `configuration.properties` file. Otherwise, the installation will fail when loading schema.

```
schema.serialization.area.map=${packages.yab-ee-foundation.dir}/etc/storage-area-mapping.rules
```
- 5 If the SAQ package is being installed on an 2015EE or 2016EE environment where EAM is also installed, see knowledgebase article AB-15388:
<https://knowledgebase.qad.com/kmp/article/AB-15388>
- 6 To prevent run time errors when doing a Purchase Order Unload, see knowledgebase article AB-15593:
<https://knowledgebase.qad.com/kmp/article/AB-15593>
- 7 If this package is installed on an environment where SAQ 2.6.1 or 2.7.0 was previously installed, the following line needs to be added to the `configuration.properties` file so that YAB will select the correct `delta.df` to install and avoid schema conflicts:
 - If SAQ 2.6.1 was installed, add the following:

```
saq.version.upgrade=2.6.1
```
 - If SAQ 2.7.0 was installed, add the following:

```
saq.version.upgrade=2.7.0
```

Installation Considerations

SAQ and QAD Add-On Compatibility

The SAQ 2.7.1 package overlaps with core EE files and other QAD add-on products. Therefore, you must carefully consider the sequence of the installs and compatibility with add-on product versions.



MSW/PSW

Install the appropriate MSW/PSW version before you attempt to install SAQ. The compatible MSW/PSW versions for the various SAQ install packages are listed below.

Table 2.1
SAQ Install Package-MSW/PSW Compatibility

SAQ Install Package	MSW/PSW Version	Comments
SAQ 2.7.1 for 2015 EE	MSW/PSW 3.3.7.3	None
SAQ 2.7.1 for 2016 EE	MSW/PSW 3.3.8	None
SAQ 2.7.1 for 2017 EE	MSW/PSW 3.3.10	None

Overlaps

Overlaps may exist between SAQ and the following QAD add-on products:

- I19
- Configurator
- Periodic Costing
- Kanban Workbenches

Important You may require assistance from QAD Services to properly prepare the environment after SAQ installation.

Installation Procedure

Important To install SAQ v2.7.1, you must use YAB.

Before proceeding, ensure that you are familiar with YAB commands. See the *QAD Configuration and Administration Guide* for more information.

Installation Steps

Follow these steps to install SAQ with YAB:

- 1 Depending on the EE version and whether you are installing the encrypted or unencrypted package, add the following lines to the `configuration.properties` file.

Note In the line `packages.netui-module-serialization-schema=2.7.1.17XX`, the “XX” represents the last two digits of the package version number. For example, if you are installing SAQ 2.7.1.03, you would enter the following lines to install the 2017EE Encrypted package:

```
packages.netui-module-serialization-schema=2.7.1.1703
packages.netui-module-serialization-encrypted=2.7.1.1703
packages.netui-module-saq-2017-encrypted=2.7.1.1703
```

EE Version	Encrypted and Unencrypted Packages
2015EE	<p>Encrypted package</p> <pre>packages.netui-module-serialization-schema=2.7.1.15XX packages.netui-module-serialization-encrypted=2.7.1.15XX packages.netui-module-saq-2015-encrypted=2.7.1.15XX</pre> <p>Unencrypted package</p> <pre>packages.netui-module-serialization-schema=2.7.1.15XX packages.netui-module-serialization-unencrypted=2.7.1.15XX packages.netui-module-saq-2015-unencrypted=2.7.1.15XX</pre>
2016EE	<p>Encrypted package</p> <pre>packages.netui-module-serialization-schema=2.7.1.16XX packages.netui-module-serialization-encrypted=2.7.1.16XX packages.netui-module-saq-2016-encrypted=2.7.1.16XX</pre> <p>Unencrypted package</p> <pre>packages.netui-module-serialization-schema=2.7.1.16XX packages.netui-module-serialization-unencrypted=2.7.1.16XX packages.netui-module-saq-2016-unencrypted=2.7.1.16XX</pre>
2017EE	<p>Encrypted package</p> <pre>packages.netui-module-serialization-schema=2.7.1.17XX packages.netui-module-serialization-encrypted=2.7.1.17XX packages.netui-module-saq-2017-encrypted=2.7.1.17XX</pre> <p>Unencrypted package</p> <pre>packages.netui-module-serialization-schema=2.7.1.17XX packages.netui-module-serialization-unencrypted=2.7.1.17XX packages.netui-module-saq-2017-unencrypted=2.7.1.17XX</pre>

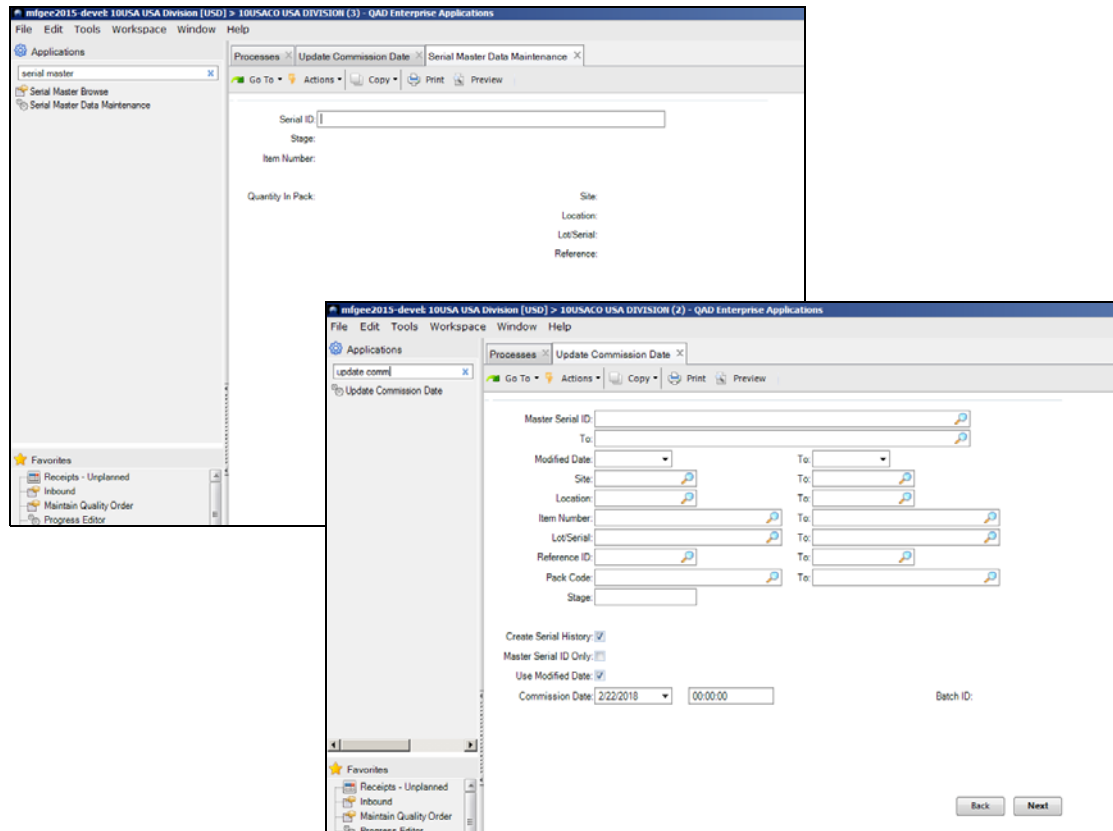
- 2 If you are installing SAQ 2.7.1 in an environment that has Production Orders also installed, see the following knowledgebase article (AB-15182) and install the correct patches:
<https://knowledgebase.qad.com/kmp/article/AB-15182/420/Production-Order-2.0-and-SAQ-2.7.1-Overlapping-Files.html>
- 3 Execute the `yab update` command to install the package.
- 4 Proceed to “Verify the Installation”.

Verify the Installation

To verify that the SAQ package was installed successfully, use the following steps:

- 1 Go to `$QAD_HOME/build/logs/yab.log`. The last two lines of the log file indicate whether the installation was successful.
- 2 To check that SAQ 2.7.1 has been installed correctly, open Serial Master Data Maintenance (3.17.18) and Update Commission Date (3.17.26). These are new functions introduced in SAQ 2.7.1.

Fig. 2.1
Serial Master Data Maintenance (3.17.18) and Update Commission Date (3.17.26)



- 3 Open Serial ID Range Maintenance (13.14.19) and verify that you can enter 16 characters in the Origin Code field.

Fig. 2.2
Serial ID Range Maintenance (13.14.19)

Site: 10-200
Address: 10C1004
Item/BOM Code:
Pack Code:

Automotive Mfg
Price Chopper

Serial Range ID:

Internal:

Origin Code:

Inbound Serial ID Rule: Ext Cross Ref Disabled
Outbound Serial ID Rule: Ext Cross Ref Disabled
Starting Character:
Maximum Length:

In SAQ 2.7.1, the Origin Code field was expanded to 16 characters.

Delete Back Next

Adding new record

Post-installation Tasks

SAQ post-installation tasks consist of the following:

- Verify that controllers.xml Was Updated
- Add POShipperMaint to controllers.xml File
- Merge Existing Patches and Customizations
- Add Enterprise Item Attributes to Home Process Map (Optional)
- Compile QAD Enterprise Applications
- Load E-Signature Seed Data
- Checking and Installing Data Collection Transactions
- Restart Anti-virus

Verify that controllers.xml Was Updated

Note Do not perform this task if the SAQ installation package does not contain a controllers.xml file.

The SAQ installation package contains modifications to the existing controllers.xml file. However, the SAQ installation package may not modify the same controllers.xml file in the PROPATH for the r-code.

To verify `controllers.xml`, do the following:

- 1 Log in to QAD EE and open the Progress Editor.
- 2 Execute the following command to locate the directory containing the file:

```
message search("controllers.xml")
```

- 3 Check the size and date/time of this file versus the file that the package installed. This file is usually found in `/xrc/com/qad/erp/api/controllers.xml`.

If the files match, no action is required. If the dates match, no action may be required. Compare the files to ensure that their contents match.

Note The order of the APIs listed may be different.

If the files do not match and there are no user customizations in your `controllers.xml` file, copy the `xrc/com/qad/erp/api/controllers.xml` version over the `PROPATH` version. If there are user customizations to your `controllers.xml`, you may need to manually merge changes from `docs/controllers.xml` in the SAQ package to a copy of the backup `controllers.xml` and save this to your `PROPATH` version.

Add POShipperMaint to controllers.xml File

Note Do not perform this task if the SAQ installation package does not contain a `controllers.xml` file.

Check if the `POShipperMaint` name element is in the `controllers.xml` file. If it is not in the file, add the following to the `controllers.xml` file:

```
<component>
  <name>POShipperMaint</name>
  <apiMethod>
    <apiName>maintainPOShipper</apiName>
    <apiType>transaction</apiType>
    <className>com.qad.erp.api.POShipperMaintController</className>
    <extProgram>rsshmt.p</extProgram>
  </apiMethod>
</component>
```

Merge Existing Patches and Customizations

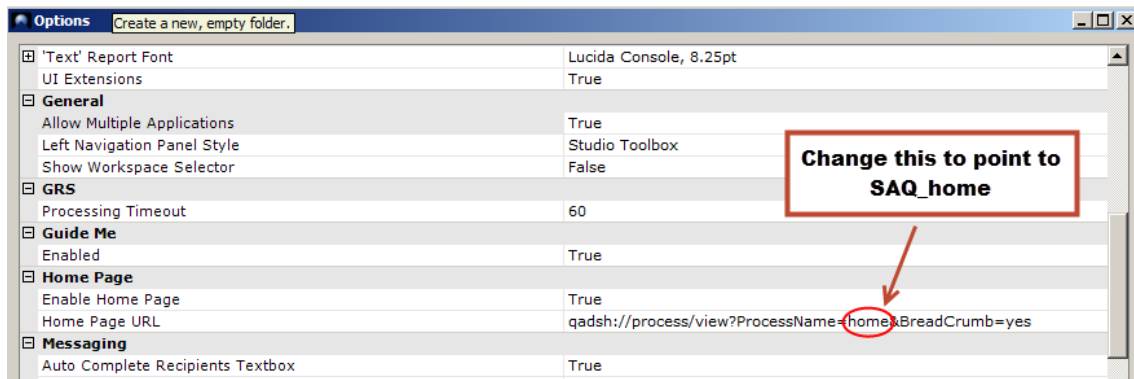
The SAQ installation package contains modifications to the existing QAD ERP programs. If you previously applied QAD patches or customizations, merge the QAD patch changes, customizations, and any other changes.

Add Enterprise Item Attributes to Home Process Map (Optional)

If you want an Enterprise Item Attributes icon included on the home process map, you must replace your existing `home.xml` file with `SAQ_home.xml` or update your `home.xml` file to add the Enterprise Item Attribute process icon.

To replace your home process map with the SAQ home process map, go to `Tools|Options|Home Page` and change the Home Page URL to point to `SAQ_home` instead of your current home process map (Figure 2.3).

Fig. 2.3
Process Map Path



You do not need to perform this task to access the Enterprise Item Attributes process in the End-to-End section (Quote to Cash, Procure-to-Pay, or Plan to Perform).

Compile QAD Enterprise Applications

If you modified or added files to your QAD EA installation, compile the QAD EA code by performing the `yab -r update` command. See the *QAD Configuration and Administration Guide* for more information.

Load E-Signature Seed Data

When users want to use E-signature functionality, they must load the `.qad` files from the following directory:

```
$QAD_HOME/config/electronic-signature/serialization/directory.
```

Checking and Installing Data Collection Transactions

Note This section only applies to users who have QAD Automation Solutions: Data Collection installed and were using the SAQ Data Collection transactions with the previous version of SAQ.

- 1 After installing SAQ, check the Data Collection transactions and verify they function properly. Make sure to check any customized transactions in addition to the standard “out of the box” transactions provided by QAD.
- 2 If the Data Collection transactions function properly, then no action is required.
- 3 If any transactions do not function properly, import the Data Collection transactions that are compatible with SAQ 2.7.1.

Depending on the version of EE that SAQ is being installed on, the following table lists the package that contains the compatible Data Collection transactions.

EE Version	SAQ 2.7.1 Data Collection Transactions	Installation Information
2015EE (Cloud only) and 2016EE (Cloud or On Premise)	as-data-collection-transactions-2.2 package	<p>The as-data-collection-transactions-2.2 is available from QAD's store (http://store.qad.com).</p> <p>For installation instructions, see the <i>QAD Automation Solutions: Data Collection Transaction Package Install Guide v2.2.0</i>.</p> <p>For a list of transactions included in the transaction package, see the <i>QAD Automation Solutions: Data Collection Transaction Release Notes v2017EE/2.2.0</i>.</p> <p>Both documents can be downloaded from the QAD Document Library.</p>
2017EE (Cloud or On Premise)	SAQ 2.7.1 package	<p>The SAQ 2.7.1 package contains all the Data Collection transactions that are compatible with SAQ 2.7.1.</p> <p>For installation instructions and a list of transactions, see the <i>QAD Automation Solutions: Data Collection Transaction Release Notes and Installation Instructions v2017EE</i>.</p> <p>This document can be downloaded from the QAD Document Library.</p>

- 4 After installing the Data Collection transactions that are compatible with SAQ 2.7.1, re-check the transactions and verify that they function properly.

Restart Anti-virus

Restart any anti-virus programs that were shut down to perform the SAQ package installation.



Package Contents

This appendix includes a list of the contents of the SAQ v2.7.1 packages.

SAQ v2.7.1 Package Contents - 2015EE 16

SAQ v2.7.1 Package Contents - 2016EE 35

SAQ v2.7.1 Package Contents - 2017EE 54

SAQ v2.7.1 Package Contents - 2015EE

·
browse-collection

- ├─ 003abad8-f04a-4424-b293-c4f65753446f.bc.xml
- ├─ 018da3dd-264e-443b-b844-f00e6b60a7d7.bc.xml
- ├─ 01ab81c3-5599-4ab8-99d7-b375d23cf8ab.bc.xml
- ├─ 0803940f-a804-4420-bf78-d449e4e29358.bc.xml
- ├─ 1000b53d-e327-4908-b710-8ae168c37f1d.bc.xml
- ├─ 12030a1b-e132-4d2d-9a70-d70d7391c2af.bc.xml
- ├─ 120da3cf-ed1e-44af-b2ba-4bae18a88604.bc.xml
- ├─ 16bc21b9-8e8b-4547-840e-987bd52e1744.bc.xml
- ├─ 17d0e193-99dc-46d8-8faa-00acb93e6e3d.bc.xml
- ├─ 18cbc4d0-2649-4d96-8840-2b72ad5d8bf1.bc.xml
- ├─ 198656a8-4d75-435b-ab4c-af2a1ffcb939.bc.xml
- ├─ 1c9f1976-fe31-4ef5-9ae5-22523cb80020.bc.xml
- ├─ 2643ea8b-1470-4a68-a68a-a87c953472c8.bc.xml
- ├─ 2c5b3e4b-2cde-4812-a35b-82b888492757.bc.xml
- ├─ 2f71fa0b-a695-4030-be35-d8a1c98c139f.bc.xml
- ├─ 333baa65-d5ab-410e-9625-d543df15e5a0.bc.xml
- ├─ 33da9eb3-913e-4d27-aeda-40a04c35a5cf.bc.xml
- ├─ 34f6b180-0b12-4e67-930c-48ede180d22b.bc.xml
- ├─ 35120db7-97fa-4f5e-8bbc-7390e15842b1.bc.xml
- ├─ 43076e33-3548-4927-a4b3-b582d3e16715.bc.xml
- ├─ 442b3d0e-eb6c-45a6-af19-3546ea2b20a0.bc.xml
- ├─ 49d1912f-ce42-4ba0-b849-ef0a4b9048a4.bc.xml
- ├─ 4a53c636-a0e1-4ee0-9fce-b61f222dfe3e.bc.xml
- ├─ 4ae40a96-ec63-4a55-b4fd-ade80811cff0.bc.xml
- ├─ 4e73c93f-9602-46e7-ab01-ea0d72894d95.bc.xml
- ├─ 4f9fb440-fe75-4743-aba6-2835b5d3d40e.bc.xml
- ├─ 519e01e1-ab18-46d4-ac17-3fc5a46a46a1.bc.xml
- ├─ 5298e769-69d2-4c94-8b97-f6fd0fd498bf.bc.xml
- ├─ 5751b65c-04bd-4a74-8d8d-a7b64e0c80b6.bc.xml
- ├─ 5d1f3b4f-c4fc-4b4d-be4b-e5e577d6acfa.bc.xml
- ├─ 5d6763fa-8eb2-4b57-aa9a-a2b85e03efed.bc.xml
- ├─ 5ed13fec-e156-4ca6-a555-e70b623e5347.bc.xml
- ├─ 5f8418e8-4db4-4e0b-8939-15809d7fe7dc.bc.xml
- ├─ 64863d05-33c0-4a11-b145-ad73edd93c18.bc.xml
- ├─ 691290dc-8856-403f-b97e-bf64d1366976.bc.xml
- ├─ 6aab98e2-8678-49c3-9645-d4361ed9c47f.bc.xml
- ├─ 6ff02af2-8de3-4a48-9e2d-e08de635d2a7.bc.xml



- ├─ 74bfceff-5197-45ed-86a5-21b83d3551ae.bc.xml
- ├─ 79eadb15-8888-4890-b47d-6ed27864e39c.bc.xml
- ├─ 7f4e3148-8f7f-4001-ae83-681f18c521d2.bc.xml
- ├─ 8064e88d-e02a-4498-8b95-b64fb01154f1.bc.xml
- ├─ 8a647dd1-6ed4-423e-93b4-e115e75bb6e0.bc.xml
- ├─ 95261c53-2790-4829-891c-3b0546a8f46d.bc.xml
- ├─ 98659694-609b-494f-8d72-6bbfa5a01550.bc.xml
- ├─ a02bda97-1f09-4e66-bbf5-0f89d5f82666.bc.xml
- ├─ a2d6414b-e74e-4c54-be25-e5cf50261c92.bc.xml
- ├─ a3d13771-4af1-49b7-b31d-5432f0cab8c8.bc.xml
- ├─ a4841ff0-ce34-497f-ade8-1b6ece21846b.bc.xml
- ├─ ab5d61ca-01e3-4008-a334-00446b6cb3f5.bc.xml
- ├─ adb48f2f-f6f7-411c-aa03-a08a2fb5c0e5.bc.xml
- ├─ adffc5c4-8788-411e-a77b-2a45faa1693f.bc.xml
- ├─ b6f0701c-e860-419a-b324-243845bb5a02.bc.xml
- ├─ c40c0264-31a5-4221-a86b-ecc282247867.bc.xml
- ├─ c45e09fd-54ba-48a3-a5d3-75a85590753b.bc.xml
- ├─ c7702ef7-d95a-4fa1-9af4-9cf59bc31160.bc.xml
- ├─ c7eb64f1-8109-44e7-9617-80dc9bffe432.bc.xml
- ├─ c994fd5e-5942-432a-9a44-da99469f3ad4.bc.xml
- ├─ d62f0a6e-04a2-4f1e-a41c-de46683af81b.bc.xml
- ├─ d8e789d6-2dc5-463f-9e6c-2b1216582a9e.bc.xml
- ├─ deployment.properties
- ├─ e1722d7c-7c7c-470a-bc4e-8932b00b0114.bc.xml
- ├─ e1e16d8a-8191-4e64-9bc6-59fb66dfe738.bc.xml
- ├─ e4800049-c4fd-47e5-a1b4-a2b5979fa3e0.bc.xml
- ├─ e6602a41-e54e-44ee-97cc-3bd4f27442e7.bc.xml
- ├─ e80a57a7-f23a-4669-a48b-656fe1022714.bc.xml
- ├─ f084aa95-aecb-47f2-b004-5aba1923073f.bc.xml
- ├─ f830f2fc-40c7-4d55-a078-9643c62d52d1.bc.xml
- ├─ fced1f16-f44c-41f0-ac3a-2a2d4cddb9e.bc.xml
- ├─ ffcadf57-8ac8-429d-abc1-19f510a1196c.bc.xml
- └─ TestSpecAttributeLinkedItems.bc.xml

custom

- ├─ boXML
 - ├─ ItemCustProfile.xsd
 - ├─ ItemProfile.xsd
 - ├─ ItemSupplierProfile.xsd
 - ├─ PoProfile.xsd
 - ├─ PsProfile.xsd

```

|   |─ SerialUsage.xsd
|   |─ SoProfile.xsd
|   |─ WoBillProfile.xsd
|   |─ WoProfile.xsd
|   └─ WorkOrderBookedSerial.xsd
└─ content
└─ fldhelp
|   |─ fieldhlp_srn.fhd
|   └─ mgfld1.p
└─ qdoc
    └─ events
        └─ custom
            └─ pawoco-ERP3_1.xml
    └─ schemas
        └─ custom
            └─ .branches
                └─ eB3
                    └─ backflushWOByPack-ERP3_1.xsd
                    └─ bookSalesOrderSerial-ERP3_1.xsd
                    └─ bookSalesOrderSerialResponse-ERP3_1.xsd
                    └─ bookWOSerial-ERP3_1.xsd
                    └─ bookWOSerialResponse-ERP3_1.xsd
                    └─ bulkLoadQualityTestSpec-ERP3_1.xsd
                    └─ bulkLoadQualityTestSpec-ERP3_2.xsd
                    └─ changePackStage-ERP3_1.xsd
                    └─ changeSerialMaster-ERP3_1.xsd
                    └─ copyItemMaster-ERP3_3.xsd
                    └─ copyItemMasterResponse-ERP3_3.xsd
                    └─ correctRepReceiptPack-ERP3_1.xsd
                    └─ correctWOREceiptbyPack-ERP3_1.xsd
                    └─ countPackTag-ERP3_1.xsd
                    └─ createOpenLotAttributeOrder-ERP3_1.xsd
                    └─ createPackByPL-ERP3_1.xsd
                    └─ createPackByPLResponse-ERP3_1.xsd
                    └─ createPackByPO-ERP3_1.xsd
                    └─ createPackByPOResponse-ERP3_1.xsd
                    └─ createPackByWO-ERP3_1.xsd
                    └─ createPackByWOResponse-ERP3_1.xsd
                    └─ createPack-ERP3_1.xsd
                    └─ createPackResponse-ERP3_1.xsd

```

```

|
| └─ cycleCountLocation-ERP3_1.xsd
| └─ deleteCustomerProfile-ERP3_1.xsd
| └─ deleteSupplierProfile-ERP3_1.xsd
| └─ ee2012
| └─ ee2013
|   └─ maintainPOShipper-ERP3_1.xsd
|   └─ maintainPOShipperResponse-ERP3_1.xsd
|   └─ receivePurchaseOrder-ERP3_2.xsd
|   └─ receivePurchaseOrderResponse-ERP3_2.xsd
|   └─ receiveWorkOrder-ERP3_2.xsd
|   └─ receiveWorkOrderResponse-ERP3_2.xsd
|   └─ recordBackflush-ERP3_6.xsd
|   └─ recordBackflushResponse-ERP3_6.xsd
|   └─ recordWorkOrderReceiptBackflush-ERP3_2.xsd
|   └─ recordWorkOrderReceiptBackflushResponse-
ERP3_2.xsd
| └─ ee2014
|   └─ receivePurchaseOrder-ERP3_2.xsd
|   └─ receivePurchaseOrderResponse-ERP3_2.xsd
| └─ ee2015
|   └─ maintainPackTransfer-ERP3_2.xsd
|   └─ maintainPackTransferLot-ERP3_2.xsd
|   └─ maintainPackTransferLotResponse-ERP3_2.xsd
|   └─ maintainPackTransferResponse-ERP3_2.xsd
|   └─ maintainQualityOrder-ERP3_3.xsd
|   └─ packSalesOrder-ERP3_3.xsd
|   └─ packSalesOrderResponse-ERP3_3.xsd
|   └─ receiveInventory-ERP3_2.xsd
|   └─ receiveInventoryResponse-ERP3_2.xsd
|   └─ receivePackByPL-ERP3_2.xsd
|   └─ receivePackByPL-ERP3_3.xsd
|   └─ receivePackByPLResponse-ERP3_2.xsd
|   └─ receivePackByPLResponse-ERP3_3.xsd
|   └─ recordBackflush-ERP3_7.xsd
|   └─ recordBackflushResponse-ERP3_7.xsd
|   └─ transferMultiPack-ERP3_2.xsd
|   └─ transferMultiPackResponse-ERP3_2.xsd
| └─ ee2016
|   └─ maintainPackTransfer-ERP3_2.xsd
|   └─ maintainPackTransferLot-ERP3_2.xsd
|   └─ maintainPackTransferLotResponse-ERP3_2.xsd

```



```

|           |─ returnPOPackResponse-ERP3_1.xsd
|           |─ returnWOComponentByPack-ERP3_1.xsd
|           |─ scrapInventoryPack-ERP3_1.xsd
|           |─ transferMultiPack-ERP3_1.xsd
|           |─ transferMultiPackResponse-ERP3_1.xsd
|           |─ transferRepPicklistPack-ERP3_1.xsd
|           |─ unloadDistributionOrder-ERP3_1.xsd
└─ serialization-qdoc.xml

menu-collection
└─ 39193c9d-f278-4497-924e-6df55661b8d2
└─ d7fcc03b-2d0a-48b1-b886-0e1433d1aefd
└─ d9ae5d19-45a5-46f6-9974-e343e54d85d7.delete
└─ deployment.properties

mkdt
└─ com
  └─ qad
    └─ shell
      └─ browse
        └─ custom
          └─ xq013.p.delete
          └─ xq016.p.delete
          └─ xq017.p.delete
          └─ xq018.p.delete
          └─ xq019.p.delete
          └─ xq020.p.delete
          └─ xq021.p.delete
          └─ xq022.p.delete
          └─ xq023.p.delete
          └─ xq024.p.delete
          └─ xq025.p.delete
          └─ xq026.p.delete
          └─ xq027.p.delete
          └─ xq028.p.delete
          └─ xq029.p.delete
          └─ xq030.p.delete
          └─ xq031.p.delete
          └─ xq032.p.delete
          └─ xq033.p.delete
          └─ xq034.p.delete
          └─ xq035.p.delete

```

```

|       |─ xq036.p.delete
|       |─ xq037.p.delete
|       |─ xq038.p.delete
|       |─ xq039.p.delete
|       |─ xq040.p.delete
|       |─ xq041.p.delete
|       |─ xq043.p.delete
|       |─ xq044.p.delete
|       |─ xq045.p.delete
|       |─ xq046.p.delete
|       |─ xq047.p.delete
|       |─ xq049.p.delete
└─ report
    └─ reports
        └─ .branches
            └─ eB3
                └─ ee2012
                    └─ QAD_PicklistPreShipperAuto.meta.xml
                    └─ QAD_PicklistPreShipperAuto.p
                    └─ QAD_PrintBOL.p
                    └─ QAD_PrintSO.meta.xml
                    └─ QAD_PrintSO.p
                    └─ QAD_SalesOrderShipperPrint.meta.xml
                    └─ QAD_SalesOrderShipperPrint.p
                    └─ sosl01rp.p
                    └─ sososl01.p
                    └─ sososlds.i
                └─ ee2013
                    └─ QAD_PicklistPreShipperAuto.meta.xml
                    └─ QAD_PicklistPreShipperAuto.p
                    └─ QAD_PrintBOL.p
                    └─ QAD_PrintSO.meta.xml
                    └─ QAD_PrintSO.p
                    └─ QAD_SalesOrderShipperPrint.meta.xml
                    └─ QAD_SalesOrderShipperPrint.p
                    └─ sosl01rp.p
                    └─ sososl01.p
                    └─ sososlds.i
                └─ ee2014
                    └─ QAD_PicklistPreShipperAuto.meta.xml

```



```

|         |         | └─ QAD_PODiscrepanciesReport.p
|         |         | └─ QAD_PrintBOL.p
|         |         | └─ QAD_PrintSO.meta.xml
|         |         | └─ QAD_PrintSO.p
|         |         | └─ QAD_SalesOrderShipperPrint.meta.xml
|         |         | └─ QAD_SalesOrderShipperPrint.p
|         |         | └─ QAD_SerialDeleteArchive.meta.all
|         |         | └─ QAD_SerialDeleteArchive.meta.xml
|         |         | └─ QAD_SerialDeleteArchive.p
|         |         | └─ sosl01rp.p
|         |         | └─ sososl01.p
|         |         | └─ sososlds.i
|         |         └─ ee2017
|         └─
QAD_PendingPOShipperUnloadReport.meta.all
|         |         | └─
QAD_PendingPOShipperUnloadReport.meta.xml
|         |         | └─ QAD_PendingPOShipperUnloadReport.p
|         |         | └─ QAD_PODiscrepanciesReport.meta.all
|         |         | └─ QAD_PODiscrepanciesReport.meta.xml
|         |         | └─ QAD_PODiscrepanciesReport.p
|         |         | └─ QAD_SerialDeleteArchive.meta.all
|         |         | └─ QAD_SerialDeleteArchive.meta.xml
|         |         | └─ QAD_SerialDeleteArchive.p
|         |         └─ MetaDataHelper.p
|         └─ pasrdf.i
|         └─ QAD_CertificateOfAnalysisPrint.meta.all
|         └─ QAD_CertificateOfAnalysisPrint.meta.xml
|         └─ QAD_CertificateOfAnalysisPrint.p
|         └─ QAD_CertificateOfAnalysisReprint.meta.all
|         └─ QAD_CertificateOfAnalysisReprint.meta.xml
|         └─ QAD_CertificateOfAnalysisReprint.p
|         └─ QAD_CycleCountWorksheetPrint.meta.all
|         └─ QAD_CycleCountWorksheetPrint.meta.xml
|         └─ QAD_CycleCountWorksheetPrint.p
|         └─ QAD_InventoryBalanceUpdate.meta.all
|         └─ QAD_InventoryBalanceUpdate.meta.xml
|         └─ QAD_InventoryBalanceUpdate.p
|         └─ QAD_ItemLotAttributeDeleteArchive.meta.all
|         └─ QAD_ItemLotAttributeDeleteArchive.meta.xml
|         └─ QAD_ItemLotAttributeDeleteArchive.p

```



```

|         |— QAD_ItemProfileReport.meta.all
|         |— QAD_ItemProfileReport.meta.xml
|         |— QAD_ItemProfileReport.p
|         |— QAD_ItemTestSpecLinkReport.meta.all
|         |— QAD_ItemTestSpecLinkReport.meta.xml
|         |— QAD_ItemTestSpecLinkReport.p
|         |— QAD_LotAttributeOrderReport.meta.all
|         |— QAD_LotAttributeOrderReport.meta.xml
|         |— QAD_LotAttributeOrderReport.p
|         |— QAD_MultiplePackStageChange.meta.all
|         |— QAD_MultiplePackStageChange.meta.xml
|         |— QAD_MultiplePackStageChange.p
|         |— QAD_MultipleWoreleasePrint.meta.all
|         |— QAD_MultipleWoreleasePrint.meta.xml
|         |— QAD_MultipleWoreleasePrint.p
|         |— QAD_PendingPOShipperUnloadReport.meta.all
|         |— QAD_PendingPOShipperUnloadReport.meta.xml
|         |— QAD_PendingPOShipperUnloadReport.p
|         |— QAD_PicklistPreShipperAuto.meta.all
|         |— QAD_PODiscrepanciesReport.meta.all
|         |— QAD_PODiscrepanciesReport.meta.xml
|         |— QAD_PODiscrepanciesReport.p
|         |— QAD_PreshipperShipper.meta.all
|         |— QAD_PreshipperShipper.meta.xml
|         |— QAD_PreshipperShipper.p
|         |— QAD_PrintBOL.meta.all
|         |— QAD_PrintBOL.meta.xml
|         |— QAD_PrintSO.meta.all
|         |— QAD_ProductionTestReport.meta.all
|         |— QAD_ProductionTestReport.meta.xml
|         |— QAD_ProductionTestReport.p
|         |— QAD_QualityOrderReport.meta.all
|         |— QAD_QualityOrderReport.meta.xml
|         |— QAD_QualityOrderReport.p
|         |— QAD_RepetitivePicklistReport.meta.all
|         |— QAD_RepetitivePicklistReport.meta.xml
|         |— QAD_RepetitivePicklistReport.p
|         |— QAD_SalesOrderShipperPrint.meta.all
|         |— QAD_SalesOrderShipperPrint.meta.xml.delete
|         |— QAD_SerialBookingByWOREport.meta.all

```

```

|           | └─ QAD_SerialBookingByWOReport.meta.xml
|           | └─ QAD_SerialBookingByWOReport.p
|           | └─ QAD_SerialDeleteArchive.meta.all
|           | └─ QAD_SerialDeleteArchive.meta.xml
|           | └─ QAD_SerialDeleteArchive.p
|           | └─
QAD_SerialHierarchyDefinitionReport.meta.all
|           | └─
QAD_SerialHierarchyDefinitionReport.meta.xml
|           | └─ QAD_SerialHierarchyDefinitionReport.p
|           | └─
QAD_SerialHierarchySimulationReport.meta.all
|           | └─
QAD_SerialHierarchySimulationReport.meta.xml
|           | └─ QAD_SerialHierarchySimulationReport.p
|           | └─
QAD_SerialItemLabelFormatDefinitionReport.meta.all
|           | └─
QAD_SerialItemLabelFormatDefinitionReport.meta.xml
|           | └─
QAD_SerialItemLabelFormatDefinitionReport.p
|           | └─ QAD_SerializedInventoryReport.meta.all
|           | └─ QAD_SerializedInventoryReport.meta.xml
|           | └─ QAD_SerializedInventoryReport.p
|           | └─
QAD_SerialLabelFormatDefinitionReport.meta.all
|           | └─
QAD_SerialLabelFormatDefinitionReport.meta.xml
|           | └─ QAD_SerialLabelFormatDefinitionReport.p
|           | └─ QAD_SerialUsageExport.meta.all
|           | └─ QAD_SerialUsageExport.meta.xml
|           | └─ QAD_SerialUsageExport.p
|           | └─ QAD_TagDeleteArchive.meta.all
|           | └─ QAD_TagDeleteArchive.meta.xml
|           | └─ QAD_TagDeleteArchive.p
|           | └─ QAD_TagPrint.meta.all
|           | └─ QAD_TagPrint.meta.xml
|           | └─ QAD_TagPrint.p
|           | └─ QAD_TestRecordsByItemReport.meta.all
|           | └─ QAD_TestRecordsByItemReport.meta.xml
|           | └─ QAD_TestRecordsByItemReport.p
|           | └─ QAD_TestSpecificationReport.meta.all
|           | └─ QAD_TestSpecificationReport.meta.xml

```



```

|           |─ QAD_TestSpecificationReport.p
|           |─ QAD_UncountedTagReportUpdate.meta.all
|           |─ QAD_UncountedTagReportUpdate.meta.xml
|           |─ QAD_UncountedTagReportUpdate.p
|           |─ QAD_WORecipePrint.meta.all
|           |─ QAD_WORecipePrint.meta.xml
|           |─ QAD_WORecipePrint.p
|           |─ QAD_WorkOrderReleasePrint.meta.all
|           |─ QAD_WorkOrderReleasePrint.meta.xml
|           |─ QAD_WorkOrderReleasePrint.p
└─ QAD_MultiplePackStageChange.p

```

process-map

```

└─ .branches
|   └─ eB3
|       └─ ee2012
|           └─ 1_SCP_EF.xml
|           └─ 1_VIP_EF.xml
|           └─ Auto_2_3.xml
|           └─ Auto.xml
|           └─ CE_04_Order2Cash.xml
|           └─ CE_04_P2P.xml
|           └─ CE_04_Plan2Perform.xml
|           └─ Config_Prod.xml
|           └─ Consumer_Goods.xml
|           └─ Design_4_4.xml
|           └─ eob_auto_mfg_quam_com.xml
|           └─ eob_auto_rec_qua_com.xml
|           └─ eob_auto_rec_stk_com.xml
|           └─ Food_Bev.xml
|           └─ HTI.xml
|           └─ Industrial.xml
|           └─ ItemAttributeQuality_1_1_1.xml
|           └─ ItemAttributeQuality_1_1.xml
|           └─ ItemAttributeQuality_1_2_1.xml
|           └─ ItemAttributeQuality_1_2.xml
|           └─ ItemAttributeQuality_1_3_1.xml
|           └─ ItemAttributeQuality_1_3_2.xml
|           └─ ItemAttributeQuality_1_3_3.xml
|           └─ ItemAttributeQuality_1_3_4.xml
|           └─ ItemAttributeQuality_1_3_5.xml

```




```

|       |   └─ Serialization_Packaging.xml
|       |   └─ SerializationPurchasing.xml
|       |   └─ Serialization_Rep_Prod.xml
|       |   └─ SerializationSetup.xml
|       |   └─ Serialization_SO_Shipper.xml
|       └─ ee2016
└─ properties
   └─ properties_cs.xml
   └─ properties_de.xml
   └─ properties_en.xml
   └─ properties_es_es.xml
   └─ properties_es_mx.xml
   └─ properties_fr.xml
   └─ properties_it.xml
   └─ properties_ja.xml
   └─ properties_ko.xml
   └─ properties_nl.xml
   └─ properties_pl.xml
   └─ properties_pt.xml
   └─ properties_zh_cn.xml
   └─ properties_zh_tw.xml
report
└─ .branches
   └─ eB3
      └─ ee2012
         └─ QAD_PicklistPreShipperAuto.xml
         └─ QAD_PrintSO.xml
         └─ QAD_SalesOrderShipperPrint.xml
      └─ ee2013
         └─ QAD_PicklistPreShipperAuto.xml
         └─ QAD_PrintSO.xml
         └─ QAD_SalesOrderShipperPrint.xml
      └─ ee2014
         └─ QAD_PicklistPreShipperAuto.xml
         └─ QAD_PrintSO.xml
         └─ QAD_SalesOrderShipperPrint.xml
      └─ ee2015
         └─ QAD_PendingPOShipperUnloadReport.xml
         └─ QAD_PicklistPreShipperAuto.xml
         └─ QAD_PODiscrepanciesReport.xml

```

```

|   |─ QAD_PrintSO.xml
|   |─ QAD_SalesOrderShipperPrint.xml
|   └─ QAD_SerialDeleteArchive.xml
└─ ee2016
|   |─ QAD_PendingPOShipperUnloadReport.xml
|   |─ QAD_PicklistPreShipperAuto.xml
|   |─ QAD_PODiscrepanciesReport.xml
|   |─ QAD_PrintSO.xml
|   |─ QAD_SalesOrderShipperPrint.xml
|   └─ QAD_SerialDeleteArchive.xml
└─ ee2017
|   |─ QAD_PendingPOShipperUnloadReport.xml
|   |─ QAD_PODiscrepanciesReport.xml
|   └─ QAD_SerialDeleteArchive.xml
└─ QAD_CertificateOfAnalysisPrint.xml
└─ QAD_CertificateOfAnalysisReprint.xml
└─ QAD_CycleCountWorksheetPrint.xml
└─ QAD_InventoryBalanceUpdate.xml
└─ QAD_ItemLotAttributeDeleteArchive.xml
└─ QAD_ItemProfileReport.xml
└─ QAD_ItemTestSpecLinkReport.xml
└─ QAD_LotAttributeOrderReport.xml
└─ QAD_MultiplePackStageChange.xml
└─ QAD_MultipleWOREleasePrint.xml
└─ QAD_PendingPOShipperUnloadReport.xml
└─ QAD_PODiscrepanciesReport.xml
└─ QAD_PreshipperShipper.xml
└─ QAD_ProductionTestReport.xml
└─ QAD_QualityOrderReport.xml
└─ QAD_RepetitivePicklistReport.xml
└─ QAD_SerialBookingByWOREport.xml
└─ QAD_SerialDeleteArchive.xml
└─ QAD_SerialHierarchyDefinitionReport.xml
└─ QAD_SerialHierarchySimulationReport.xml
└─ QAD_SerialItemLabelFormatReport.xml
└─ QAD_SerializedInventoryReport.xml
└─ QAD_SerialLabelFormatReport.xml
└─ QAD_SerialUsageExport.xml
└─ QAD_TagDeleteArchive.xml
└─ QAD_TagPrint.xml

```

- ├─ QAD_TestRecordsByItemReport.xml
- ├─ QAD_TestSpecificationReport.xml
- ├─ QAD_UncountedTagReportUpdate.xml
- ├─ QAD_WORecipePrint.xml
- ├─ QAD_WorkOrderReleasePrint.xml
- └─ templates

SAQ v2.7.1 Package Contents - 2016EE

·
browse-collection

- ├─ 003abad8-f04a-4424-b293-c4f65753446f.bc.xml
- ├─ 018da3dd-264e-443b-b844-f00e6b60a7d7.bc.xml
- ├─ 01ab81c3-5599-4ab8-99d7-b375d23cf8ab.bc.xml
- ├─ 0803940f-a804-4420-bf78-d449e4e29358.bc.xml
- ├─ 1000b53d-e327-4908-b710-8ae168c37f1d.bc.xml
- ├─ 12030a1b-e132-4d2d-9a70-d70d7391c2af.bc.xml
- ├─ 120da3cf-ed1e-44af-b2ba-4bae18a88604.bc.xml
- ├─ 16bc21b9-8e8b-4547-840e-987bd52e1744.bc.xml
- ├─ 17d0e193-99dc-46d8-8faa-00acb93e6e3d.bc.xml
- ├─ 18cbc4d0-2649-4d96-8840-2b72ad5d8bf1.bc.xml
- ├─ 198656a8-4d75-435b-ab4c-af2a1ffcb939.bc.xml
- ├─ 1c9f1976-fe31-4ef5-9ae5-22523cb80020.bc.xml
- ├─ 2643ea8b-1470-4a68-a68a-a87c953472c8.bc.xml
- ├─ 2c5b3e4b-2cde-4812-a35b-82b888492757.bc.xml
- ├─ 2f71fa0b-a695-4030-be35-d8a1c98c139f.bc.xml
- ├─ 333baa65-d5ab-410e-9625-d543df15e5a0.bc.xml
- ├─ 33da9eb3-913e-4d27-aeda-40a04c35a5cf.bc.xml
- ├─ 34f6b180-0b12-4e67-930c-48ede180d22b.bc.xml
- ├─ 35120db7-97fa-4f5e-8bbc-7390e15842b1.bc.xml
- ├─ 43076e33-3548-4927-a4b3-b582d3e16715.bc.xml
- ├─ 442b3d0e-eb6c-45a6-af19-3546ea2b20a0.bc.xml
- ├─ 49d1912f-ce42-4ba0-b849-ef0a4b9048a4.bc.xml
- ├─ 4a53c636-a0e1-4ee0-9fce-b61f222dfe3e.bc.xml
- ├─ 4ae40a96-ec63-4a55-b4fd-ade80811cff0.bc.xml
- ├─ 4e73c93f-9602-46e7-ab01-ea0d72894d95.bc.xml
- ├─ 4f9fb440-fe75-4743-aba6-2835b5d3d40e.bc.xml
- ├─ 519e01e1-ab18-46d4-ac17-3fc5a46a46a1.bc.xml
- ├─ 5298e769-69d2-4c94-8b97-f6fd0fd498bf.bc.xml
- ├─ 5751b65c-04bd-4a74-8d8d-a7b64e0c80b6.bc.xml
- ├─ 5d1f3b4f-c4fc-4b4d-be4b-e5e577d6acfa.bc.xml

└─ 5d6763fa-8eb2-4b57-aa9a-a2b85e03efed.bc.xml
└─ 5ed13fec-e156-4ca6-a555-e70b623e5347.bc.xml
└─ 5f8418e8-4db4-4e0b-8939-15809d7fe7dc.bc.xml
└─ 64863d05-33c0-4a11-b145-ad73edd93c18.bc.xml
└─ 691290dc-8856-403f-b97e-bf64d1366976.bc.xml
└─ 6aab98e2-8678-49c3-9645-d4361ed9c47f.bc.xml
└─ 6ff02af2-8de3-4a48-9e2d-e08de635d2a7.bc.xml
└─ 74bfceff-5197-45ed-86a5-21b83d3551ae.bc.xml
└─ 79eadb15-8888-4890-b47d-6ed27864e39c.bc.xml
└─ 7f4e3148-8f7f-4001-ae83-681f18c521d2.bc.xml
└─ 8064e88d-e02a-4498-8b95-b64fb01154f1.bc.xml
└─ 8a647dd1-6ed4-423e-93b4-e115e75bb6e0.bc.xml
└─ 95261c53-2790-4829-891c-3b0546a8f46d.bc.xml
└─ 98659694-609b-494f-8d72-6bbfa5a01550.bc.xml
└─ a02bda97-1f09-4e66-bbf5-0f89d5f82666.bc.xml
└─ a2d6414b-e74e-4c54-be25-e5cf50261c92.bc.xml
└─ a3d13771-4af1-49b7-b31d-5432f0cab8c8.bc.xml
└─ a4841ff0-ce34-497f-ade8-1b6ece21846b.bc.xml
└─ ab5d61ca-01e3-4008-a334-00446b6cb3f5.bc.xml
└─ adb48f2f-f6f7-411c-aa03-a08a2fb5c0e5.bc.xml
└─ adffc5c4-8788-411e-a77b-2a45faa1693f.bc.xml
└─ b6f0701c-e860-419a-b324-243845bb5a02.bc.xml
└─ c40c0264-31a5-4221-a86b-ecc282247867.bc.xml
└─ c45e09fd-54ba-48a3-a5d3-75a85590753b.bc.xml
└─ c7702ef7-d95a-4fa1-9af4-9cf59bc31160.bc.xml
└─ c7eb64f1-8109-44e7-9617-80dc9bffe432.bc.xml
└─ c994fd5e-5942-432a-9a44-da99469f3ad4.bc.xml
└─ d62f0a6e-04a2-4f1e-a41c-de46683af81b.bc.xml
└─ d8e789d6-2dc5-463f-9e6c-2b1216582a9e.bc.xml
└─ deployment.properties
└─ e1722d7c-7c7c-470a-bc4e-8932b00b0114.bc.xml
└─ e1e16d8a-8191-4e64-9bc6-59fb66dfe738.bc.xml
└─ e4800049-c4fd-47e5-a1b4-a2b5979fa3e0.bc.xml
└─ e6602a41-e54e-44ee-97cc-3bd4f27442e7.bc.xml
└─ e80a57a7-f23a-4669-a48b-656fe1022714.bc.xml
└─ f084aa95-aecb-47f2-b004-5aba1923073f.bc.xml
└─ f830f2fc-40c7-4d55-a078-9643c62d52d1.bc.xml
└─ fced1f16-f44c-41f0-ac3a-2a2d4cddb9e.bc.xml
└─ ffcadf57-8ac8-429d-abc1-19f510a1196c.bc.xml
└─ TestSpecAttributeLinkedItems.bc.xml

```

custom
├── boXML
│   ├── ItemCustProfile.xsd
│   ├── ItemProfile.xsd
│   ├── ItemSupplierProfile.xsd
│   ├── PoProfile.xsd
│   ├── PsProfile.xsd
│   ├── SerialUsage.xsd
│   ├── SoProfile.xsd
│   ├── WoBillProfile.xsd
│   ├── WoProfile.xsd
│   └── WorkOrderBookedSerial.xsd
├── content
├── fldhelp
│   ├── fieldhlp_srn.fhd
│   └── mgfld1.p
└── qdoc
    ├── events
    │   └── custom
    │       └── pawoco-ERP3_1.xml
    ├── schemas
    │   ├── custom
    │   │   ├── .branches
    │   │   │   └── eB3
    │   │   │       ├── backflushWOByPack-ERP3_1.xsd
    │   │   │       ├── bookSalesOrderSerial-ERP3_1.xsd
    │   │   │       ├── bookSalesOrderSerialResponse-ERP3_1.xsd
    │   │   │       ├── bookWOSerial-ERP3_1.xsd
    │   │   │       ├── bookWOSerialResponse-ERP3_1.xsd
    │   │   │       ├── bulkLoadQualityTestSpec-ERP3_1.xsd
    │   │   │       ├── bulkLoadQualityTestSpec-ERP3_2.xsd
    │   │   │       ├── changePackStage-ERP3_1.xsd
    │   │   │       ├── changeSerialMaster-ERP3_1.xsd
    │   │   │       ├── copyItemMaster-ERP3_3.xsd
    │   │   │       ├── copyItemMasterResponse-ERP3_3.xsd
    │   │   │       ├── correctRepReceiptPack-ERP3_1.xsd
    │   │   │       ├── correctWOREceiptbyPack-ERP3_1.xsd
    │   │   │       ├── countPackTag-ERP3_1.xsd
    │   │   │       ├── createOpenLotAttributeOrder-ERP3_1.xsd
    │   │   │       └── createPackByPL-ERP3_1.xsd

```

```

|
|      └─ createPackByPLResponse-ERP3_1.xsd
|      └─ createPackByPO-ERP3_1.xsd
|      └─ createPackByPOResponse-ERP3_1.xsd
|      └─ createPackByWO-ERP3_1.xsd
|      └─ createPackByWOResponse-ERP3_1.xsd
|      └─ createPack-ERP3_1.xsd
|      └─ createPackResponse-ERP3_1.xsd
|      └─ cycleCountLocation-ERP3_1.xsd
|      └─ deleteCustomerProfile-ERP3_1.xsd
|      └─ deleteSupplierProfile-ERP3_1.xsd
|      └─ ee2012
|      └─ ee2013
|      |   └─ maintainPOShipper-ERP3_1.xsd
|      |   └─ maintainPOShipperResponse-ERP3_1.xsd
|      |   └─ receivePurchaseOrder-ERP3_2.xsd
|      |   └─ receivePurchaseOrderResponse-ERP3_2.xsd
|      |   └─ receiveWorkOrder-ERP3_2.xsd
|      |   └─ receiveWorkOrderResponse-ERP3_2.xsd
|      |   └─ recordBackflush-ERP3_6.xsd
|      |   └─ recordBackflushResponse-ERP3_6.xsd
|      |   └─ recordWorkOrderReceiptBackflush-ERP3_2.xsd
|      |   └─ recordWorkOrderReceiptBackflushResponse-
ERP3_2.xsd
|      └─ ee2014
|      |   └─ receivePurchaseOrder-ERP3_2.xsd
|      |   └─ receivePurchaseOrderResponse-ERP3_2.xsd
|      └─ ee2015
|      |   └─ maintainPackTransfer-ERP3_2.xsd
|      |   └─ maintainPackTransferLot-ERP3_2.xsd
|      |   └─ maintainPackTransferLotResponse-ERP3_2.xsd
|      |   └─ maintainPackTransferResponse-ERP3_2.xsd
|      |   └─ maintainQualityOrder-ERP3_3.xsd
|      |   └─ packSalesOrder-ERP3_3.xsd
|      |   └─ packSalesOrderResponse-ERP3_3.xsd
|      |   └─ receiveInventory-ERP3_2.xsd
|      |   └─ receiveInventoryResponse-ERP3_2.xsd
|      |   └─ receivePackByPL-ERP3_2.xsd
|      |   └─ receivePackByPL-ERP3_3.xsd
|      |   └─ receivePackByPLResponse-ERP3_2.xsd
|      |   └─ receivePackByPLResponse-ERP3_3.xsd
|      |   └─ recordBackflush-ERP3_7.xsd

```




```

|
|      └─ maintainComponentSerialResponse-ERP3_1.xsd
|
|      └─ maintainCUMOrderOperationTestRecord-ERP3_1.xsd
|
|      └─ maintainCumOrderProfile-ERP3_1.xsd
|
|      └─ maintainDOShipperConfirm-ERP3_1.xsd
|
|      └─ maintainDOShipperConfirmResponse-ERP3_1.xsd
|
|      └─ maintainInventoryDetail-ERP3_1.xsd
|
|      └─ maintainItemAttributeCategory-ERP3_1.xsd
|
|      └─ maintainItemAttribute-ERP3_1.xsd
|
|      └─ maintainItemCustomerProfile-ERP3_1.xsd
|
|      └─ maintainItemMaster-ERP3_8.xsd
|
|      └─ maintainItemMasterResponse-ERP3_8.xsd
|
|      └─ maintainItemPackaging-ERP3_1.xsd
|
|      └─ maintainItemPackagingResponse-ERP3_1.xsd
|
|      └─ maintainItemProfile-ERP3_1.xsd
|
|      └─ maintainItemSupplierProfile-ERP3_1.xsd
|
|      └─ maintainItemTestLink-ERP3_1.xsd
|
|      └─ maintainLabelMaster-ERP3_2.xsd
|
|      └─ maintainLotAttributeOrder-ERP3_1.xsd
|
|      └─ maintainPackagingStructure-ERP3_1.xsd
|
|      └─ maintainPackagingStructureResponse-ERP3_1.xsd
|
|      └─ maintainPackBuild-ERP3_1.xsd
|
|      └─ maintainPackBuild-ERP3_2.xsd
|
|      └─ maintainPackBuildResponse-ERP3_1.xsd
|
|      └─ maintainPackBuildResponse-ERP3_2.xsd
|
|      └─ maintainPackCode-ERP3_1.xsd
|
|      └─ maintainPackCodeResponse-ERP3_1.xsd
|
|      └─ maintainPackCreate-ERP3_1.xsd
|
|      └─ maintainPackCreateResponse-ERP3_1.xsd
|
|      └─ maintainPackDecomm-ERP3_1.xsd
|
|      └─ maintainPackDecommResponse-ERP3_1.xsd
|
|      └─ maintainPackReceiptByWO-ERP3_1.xsd
|
|      └─ maintainPackReceiptByWOResponse-ERP3_1.xsd
|
|      └─ maintainPackReceipt-ERP3_1.xsd
|
|      └─ maintainPackReceiptResponse-ERP3_1.xsd
|
|      └─ maintainPackRemove-ERP3_1.xsd
|
|      └─ maintainPackRemove-ERP3_2.xsd
|
|      └─ maintainPackRemoveResponse-ERP3_1.xsd
|
|      └─ maintainPackRemoveResponse-ERP3_2.xsd
|
|      └─ maintainPackTransfer-ERP3_1.xsd
|
|      └─ maintainPackTransferLot-ERP3_1.xsd

```

| — maintainPackTransferLotResponse-ERP3_1.xsd
 | — maintainPackTransferResponse-ERP3_1.xsd
 | — maintainPoLineProfile-ERP3_1.xsd
 | — maintainPOShipperReceipt-ERP3_2.xsd
 | — maintainPOShipperReceiptResponse-ERP3_2.xsd
 | — maintainPOShipperUnloading-ERP3_2.xsd
 | — maintainPOShipperUnloadingResponse-ERP3_2.xsd
 | — maintainProdOpAttributes-ERP3_1.xsd
 | — maintainQualityOrderAttributes-ERP3_1.xsd
 | — maintainQualityOrder-ERP3_2.xsd
 | — maintainQualityOrderTestRecord-ERP3_1.xsd
 | — maintainQualityTestSpec-ERP3_1.xsd
 | — maintainQualityTestSpecStatus-ERP3_1.xsd
 | — maintainSerialIDRange-ERP3_1.xsd
 | — maintainSerialIDRange-ERP3_2.xsd
 | — maintainSerialIDRangeResponse-ERP3_1.xsd
 | — maintainSerialRange-ERP3_1.xsd
 | — maintainSoLineProfile-ERP3_1.xsd
 | — maintainTestItemLink-ERP3_1.xsd
 | — maintainTestSpecification-ERP3_1.xsd
 | — maintainTruckLoad-ERP3_1.xsd
 | — maintainWeightUpdate-ERP3_1.xsd
 | — maintainWOComponentProfile-ERP3_1.xsd
 | — maintainWorkOrderOperationTestRecord-ERP3_1.xsd
 | — maintainWorkOrderProfile-ERP3_1.xsd
 | — mergePack-ERP3_1.xsd
 | — moveDOShipper-ERP3_2.xsd
 | — moveDOShipperResponse-ERP3_2.xsd
 | — moveSOShipper-ERP3_2.xsd
 | — moveSOShipperResponse-ERP3_2.xsd
 | — packDistributeOrder-ERP3_2.xsd
 | — packDistributeOrderResponse-ERP3_2.xsd
 | — packIssueResponse-ERP3_1.xsd
 | — packSalesOrder-ERP3_2.xsd
 | — packSalesOrderResponse-ERP3_2.xsd
 | — packSplit-ERP3_1.xsd
 | — pickDistributeOrder-ERP3_2.xsd
 | — pickDistributeOrderResponse-ERP3_2.xsd
 | — pickSalesOrder-ERP3_2.xsd
 | — pickSalesOrderResponse-ERP3_2.xsd

```

|
|   └─ receiveDOByPack-ERP3_1.xsd
|   └─ receivePackByPL-ERP3_1.xsd
|   └─ receivePackByPLResponse-ERP3_1.xsd
|   └─ recordBackflush-ERP3_5.xsd
|   └─ recordBackflushResponse-ERP3_5.xsd
|   └─ repackage-ERP3_1.xsd
|   └─ returnPOPack-ERP3_1.xsd
|   └─ returnPOPackResponse-ERP3_1.xsd
|   └─ returnWComponentByPack-ERP3_1.xsd
|   └─ scrapInventoryPack-ERP3_1.xsd
|   └─ transferMultiPack-ERP3_1.xsd
|   └─ transferMultiPackResponse-ERP3_1.xsd
|   └─ transferRepPicklistPack-ERP3_1.xsd
|   └─ unloadDistributionOrder-ERP3_1.xsd
└─ serialization-qdoc.xml

```

menu-collection

```

└─ 39193c9d-f278-4497-924e-6df55661b8d2
└─ d7fcc03b-2d0a-48b1-b886-0e1433d1aefd
└─ d9ae5d19-45a5-46f6-9974-e343e54d85d7.delete
└─ deployment.properties

```

mkdt

```

└─ com
  └─ qad
    └─ shell
      └─ browse
        └─ custom
          └─ xq013.p.delete
          └─ xq016.p.delete
          └─ xq017.p.delete
          └─ xq018.p.delete
          └─ xq019.p.delete
          └─ xq020.p.delete
          └─ xq021.p.delete
          └─ xq022.p.delete
          └─ xq023.p.delete
          └─ xq024.p.delete
          └─ xq025.p.delete
          └─ xq026.p.delete
          └─ xq027.p.delete
          └─ xq028.p.delete

```



```

|       |─ xq029.p.delete
|       |─ xq030.p.delete
|       |─ xq031.p.delete
|       |─ xq032.p.delete
|       |─ xq033.p.delete
|       |─ xq034.p.delete
|       |─ xq035.p.delete
|       |─ xq036.p.delete
|       |─ xq037.p.delete
|       |─ xq038.p.delete
|       |─ xq039.p.delete
|       |─ xq040.p.delete
|       |─ xq041.p.delete
|       |─ xq043.p.delete
|       |─ xq044.p.delete
|       |─ xq045.p.delete
|       |─ xq046.p.delete
|       |─ xq047.p.delete
|       |─ xq049.p.delete
└─ report
    └─ reports
        └─ .branches
            └─ eB3
                └─ ee2012
                    └─ QAD_PicklistPreShipperAuto.meta.xml
                    └─ QAD_PicklistPreShipperAuto.p
                    └─ QAD_PrintBOL.p
                    └─ QAD_PrintSO.meta.xml
                    └─ QAD_PrintSO.p
                    └─ QAD_SalesOrderShipperPrint.meta.xml
                    └─ QAD_SalesOrderShipperPrint.p
                    └─ sosl01rp.p
                    └─ sososl01.p
                    └─ sososlds.i
                └─ ee2013
                    └─ QAD_PicklistPreShipperAuto.meta.xml
                    └─ QAD_PicklistPreShipperAuto.p
                    └─ QAD_PrintBOL.p
                    └─ QAD_PrintSO.meta.xml
                    └─ QAD_PrintSO.p

```

```

|         |         |         | QAD_SalesOrderShipperPrint.meta.xml
|         |         |         | QAD_SalesOrderShipperPrint.p
|         |         |         | sosl01rp.p
|         |         |         | sososl01.p
|         |         |         | └─ sososlds.i
|         |         |         |
|         |         |         | ee2014
|         |         |         | └─ QAD_PicklistPreShipperAuto.meta.xml
|         |         |         | └─ QAD_PicklistPreShipperAuto.p
|         |         |         | └─ QAD_PrintBOL.p
|         |         |         | └─ QAD_PrintSO.meta.xml
|         |         |         | └─ QAD_PrintSO.p
|         |         |         | └─ QAD_SalesOrderShipperPrint.meta.xml
|         |         |         | └─ QAD_SalesOrderShipperPrint.p
|         |         |         | └─ sosl01rp.p
|         |         |         | └─ sososl01.p
|         |         |         | └─ sososlds.i
|         |         |         |
|         |         |         | ee2015
|         |         |         | └─
|         |         |         | └─
QAD_PendingPOShipperUnloadReport.meta.all
|         |         |         | └─
QAD_PendingPOShipperUnloadReport.meta.xml
|         |         |         | └─ QAD_PendingPOShipperUnloadReport.p
|         |         |         | └─ QAD_PicklistPreShipperAuto.meta.xml
|         |         |         | └─ QAD_PicklistPreShipperAuto.p
|         |         |         | └─ QAD_PODiscrepanciesReport.meta.all
|         |         |         | └─ QAD_PODiscrepanciesReport.meta.xml
|         |         |         | └─ QAD_PODiscrepanciesReport.p
|         |         |         | └─ QAD_PrintBOL.p
|         |         |         | └─ QAD_PrintSO.meta.xml
|         |         |         | └─ QAD_PrintSO.p
|         |         |         | └─ QAD_SalesOrderShipperPrint.meta.xml
|         |         |         | └─ QAD_SalesOrderShipperPrint.p
|         |         |         | └─ QAD_SerialDeleteArchive.meta.all
|         |         |         | └─ QAD_SerialDeleteArchive.meta.xml
|         |         |         | └─ QAD_SerialDeleteArchive.p
|         |         |         | └─ sosl01rp.p
|         |         |         | └─ sososl01.p
|         |         |         | └─ sososlds.i
|         |         |         |
|         |         |         | ee2016
|         |         |         | └─
|         |         |         | └─
QAD_PendingPOShipperUnloadReport.meta.all

```



```

|           |           | └─
QAD_PendingPOShipperUnloadReport.meta.xml
|           |           | └─ QAD_PendingPOShipperUnloadReport.p
|           |           | └─ QAD_PicklistPreShipperAuto.meta.xml
|           |           | └─ QAD_PicklistPreShipperAuto.p
|           |           | └─ QAD_PODiscrepanciesReport.meta.all
|           |           | └─ QAD_PODiscrepanciesReport.meta.xml
|           |           | └─ QAD_PODiscrepanciesReport.p
|           |           | └─ QAD_PrintBOL.p
|           |           | └─ QAD_PrintSO.meta.xml
|           |           | └─ QAD_PrintSO.p
|           |           | └─ QAD_SalesOrderShipperPrint.meta.xml
|           |           | └─ QAD_SalesOrderShipperPrint.p
|           |           | └─ QAD_SerialDeleteArchive.meta.all
|           |           | └─ QAD_SerialDeleteArchive.meta.xml
|           |           | └─ QAD_SerialDeleteArchive.p
|           |           | └─ sosl01rp.p
|           |           | └─ sososl01.p
|           |           | └─ sososlds.i
|           | └─ ee2017
|           | └─
QAD_PendingPOShipperUnloadReport.meta.all
|           |           | └─
QAD_PendingPOShipperUnloadReport.meta.xml
|           |           | └─ QAD_PendingPOShipperUnloadReport.p
|           |           | └─ QAD_PODiscrepanciesReport.meta.all
|           |           | └─ QAD_PODiscrepanciesReport.meta.xml
|           |           | └─ QAD_PODiscrepanciesReport.p
|           |           | └─ QAD_SerialDeleteArchive.meta.all
|           |           | └─ QAD_SerialDeleteArchive.meta.xml
|           |           | └─ QAD_SerialDeleteArchive.p
|           | └─ MetaDataHelper.p
|           | └─ pasrdf.i
|           | └─ QAD_CertificateOfAnalysisPrint.meta.all
|           | └─ QAD_CertificateOfAnalysisPrint.meta.xml
|           | └─ QAD_CertificateOfAnalysisPrint.p
|           | └─ QAD_CertificateOfAnalysisReprint.meta.all
|           | └─ QAD_CertificateOfAnalysisReprint.meta.xml
|           | └─ QAD_CertificateOfAnalysisReprint.p
|           | └─ QAD_CycleCountWorksheetPrint.meta.all
|           | └─ QAD_CycleCountWorksheetPrint.meta.xml

```



```

|         |— QAD_CycleCountWorksheetPrint.p
|         |— QAD_InventoryBalanceUpdate.meta.all
|         |— QAD_InventoryBalanceUpdate.meta.xml
|         |— QAD_InventoryBalanceUpdate.p
|     |— QAD_ItemLotAttributeDeleteArchive.meta.all
|     |— QAD_ItemLotAttributeDeleteArchive.meta.xml
|         |— QAD_ItemLotAttributeDeleteArchive.p
|         |— QAD_ItemProfileReport.meta.all
|         |— QAD_ItemProfileReport.meta.xml
|         |— QAD_ItemProfileReport.p
|         |— QAD_ItemTestSpecLinkReport.meta.all
|         |— QAD_ItemTestSpecLinkReport.meta.xml
|         |— QAD_ItemTestSpecLinkReport.p
|         |— QAD_LotAttributeOrderReport.meta.all
|         |— QAD_LotAttributeOrderReport.meta.xml
|         |— QAD_LotAttributeOrderReport.p
|         |— QAD_MultiplePackStageChange.meta.all
|         |— QAD_MultiplePackStageChange.meta.xml
|         |— QAD_MultiplePackStageChange.p
|         |— QAD_MultipleWoreleasePrint.meta.all
|         |— QAD_MultipleWoreleasePrint.meta.xml
|         |— QAD_MultipleWoreleasePrint.p
|     |— QAD_PendingPOShipperUnloadReport.meta.all
|     |— QAD_PendingPOShipperUnloadReport.meta.xml
|         |— QAD_PendingPOShipperUnloadReport.p
|         |— QAD_PicklistPreShipperAuto.meta.all
|         |— QAD_PODiscrepanciesReport.meta.all
|         |— QAD_PODiscrepanciesReport.meta.xml
|         |— QAD_PODiscrepanciesReport.p
|         |— QAD_PreshipperShipper.meta.all
|         |— QAD_PreshipperShipper.meta.xml
|         |— QAD_PreshipperShipper.p
|         |— QAD_PrintBOL.meta.all
|         |— QAD_PrintBOL.meta.xml
|         |— QAD_PrintSO.meta.all
|         |— QAD_ProductionTestReport.meta.all
|         |— QAD_ProductionTestReport.meta.xml
|         |— QAD_ProductionTestReport.p
|         |— QAD_QualityOrderReport.meta.all
|         |— QAD_QualityOrderReport.meta.xml

```



```

|           |           | QAD_TagPrint.meta.xml
|           |           | QAD_TagPrint.p
|           |           | QAD_TestRecordsByItemReport.meta.all
|           |           | QAD_TestRecordsByItemReport.meta.xml
|           |           | QAD_TestRecordsByItemReport.p
|           |           | QAD_TestSpecificationReport.meta.all
|           |           | QAD_TestSpecificationReport.meta.xml
|           |           | QAD_TestSpecificationReport.p
|           |           | QAD_UncountedTagReportUpdate.meta.all
|           |           | QAD_UncountedTagReportUpdate.meta.xml
|           |           | QAD_UncountedTagReportUpdate.p
|           |           | QAD_WORecipePrint.meta.all
|           |           | QAD_WORecipePrint.meta.xml
|           |           | QAD_WORecipePrint.p
|           |           | QAD_WorkOrderReleasePrint.meta.all
|           |           | QAD_WorkOrderReleasePrint.meta.xml
|           |           | QAD_WorkOrderReleasePrint.p
└─ QAD_MultiplePackStageChange.p

```

process-map

```

└─ .branches
|   └─ eB3
|       └─ ee2012
|           |   └─ 1_SCP_EF.xml
|           |   └─ 1_VIP_EF.xml
|           |   └─ Auto_2_3.xml
|           |   └─ Auto.xml
|           |   └─ CE_04_Order2Cash.xml
|           |   └─ CE_04_P2P.xml
|           |   └─ CE_04_Plan2Perform.xml
|           |   └─ Config_Prod.xml
|           |   └─ Consumer_Goods.xml
|           |   └─ Design_4_4.xml
|           |   └─ eob_auto_mfg_quam_com.xml
|           |   └─ eob_auto_rec_qua_com.xml
|           |   └─ eob_auto_rec_stk_com.xml
|           |   └─ Food_Bev.xml
|           |   └─ HTI.xml
|           |   └─ Industrial.xml
|           |   └─ ItemAttributeQuality_1_1_1.xml
|           |   └─ ItemAttributeQuality_1_1.xml

```




```

|       |   └─ ItemAttributeQuality_1.xml
|       |   └─ ManagePhysicalInventory.xml
|       |   └─ Serialization_Cycle_Count.xml
|       |   └─ Serialization_Discrete_Prod.xml
|       |   └─ Serialization_Distribution.xml
|       |   └─ Serialization_Inventory.xml
|       |   └─ SerializationManagement.xml
|       |   └─ Serialization_Packaging.xml
|       |   └─ SerializationPurchasing.xml
|       |   └─ Serialization_Rep_Prod.xml
|       |   └─ SerializationSetup.xml
|       |   └─ Serialization_SO_Shipper.xml
|       └─ ee2016
└─ properties
   └─ properties_cs.xml
   └─ properties_de.xml
   └─ properties_en.xml
   └─ properties_es_es.xml
   └─ properties_es_mx.xml
   └─ properties_fr.xml
   └─ properties_it.xml
   └─ properties_ja.xml
   └─ properties_ko.xml
   └─ properties_nl.xml
   └─ properties_pl.xml
   └─ properties_pt.xml
   └─ properties_zh_cn.xml
   └─ properties_zh_tw.xml
report
└─ .branches
   └─ eB3
      └─ ee2012
         └─ QAD_PicklistPreShipperAuto.xml
         └─ QAD_PrintSO.xml
         └─ QAD_SalesOrderShipperPrint.xml
      └─ ee2013
         └─ QAD_PicklistPreShipperAuto.xml
         └─ QAD_PrintSO.xml
         └─ QAD_SalesOrderShipperPrint.xml
      └─ ee2014

```

```

|   |─ QAD_PicklistPreShipperAuto.xml
|   |─ QAD_PrintSO.xml
|   └─ QAD_SalesOrderShipperPrint.xml
└─ ee2015
|   |─ QAD_PendingPOShipperUnloadReport.xml
|   |─ QAD_PicklistPreShipperAuto.xml
|   |─ QAD_PODiscrepanciesReport.xml
|   |─ QAD_PrintSO.xml
|   |─ QAD_SalesOrderShipperPrint.xml
|   └─ QAD_SerialDeleteArchive.xml
└─ ee2016
|   |─ QAD_PendingPOShipperUnloadReport.xml
|   |─ QAD_PicklistPreShipperAuto.xml
|   |─ QAD_PODiscrepanciesReport.xml
|   |─ QAD_PrintSO.xml
|   |─ QAD_SalesOrderShipperPrint.xml
|   └─ QAD_SerialDeleteArchive.xml
└─ ee2017
|   |─ QAD_PendingPOShipperUnloadReport.xml
|   |─ QAD_PODiscrepanciesReport.xml
|   └─ QAD_SerialDeleteArchive.xml
└─ QAD_CertificateOfAnalysisPrint.xml
└─ QAD_CertificateOfAnalysisReprint.xml
└─ QAD_CycleCountWorksheetPrint.xml
└─ QAD_InventoryBalanceUpdate.xml
└─ QAD_ItemLotAttributeDeleteArchive.xml
└─ QAD_ItemProfileReport.xml
└─ QAD_ItemTestSpecLinkReport.xml
└─ QAD_LotAttributeOrderReport.xml
└─ QAD_MultiplePackStageChange.xml
└─ QAD_MultipleWOREleasePrint.xml
└─ QAD_PendingPOShipperUnloadReport.xml
└─ QAD_PODiscrepanciesReport.xml
└─ QAD_PreshipperShipper.xml
└─ QAD_ProductionTestReport.xml
└─ QAD_QualityOrderReport.xml
└─ QAD_RepetitivePicklistReport.xml
└─ QAD_SerialBookingByWOREport.xml
└─ QAD_SerialDeleteArchive.xml
└─ QAD_SerialHierarchyDefinitionReport.xml

```

- |— QAD_SerialHierarchySimulationReport.xml
- |— QAD_SerialItemLabelFormatReport.xml
- |— QAD_SerializedInventoryReport.xml
- |— QAD_SerialLabelFormatReport.xml
- |— QAD_SerialUsageExport.xml
- |— QAD_TagDeleteArchive.xml
- |— QAD_TagPrint.xml
- |— QAD_TestRecordsByItemReport.xml
- |— QAD_TestSpecificationReport.xml
- |— QAD_UncountedTagReportUpdate.xml
- |— QAD_WORecipePrint.xml
- |— QAD_WorkOrderReleasePrint.xml
- |— templates

SAQ v2.7.1 Package Contents - 2017EE

·
browse-collection

- |— 003abad8-f04a-4424-b293-c4f65753446f.bc.xml
- |— 018da3dd-264e-443b-b844-f00e6b60a7d7.bc.xml
- |— 01ab81c3-5599-4ab8-99d7-b375d23cf8ab.bc.xml
- |— 0803940f-a804-4420-bf78-d449e4e29358.bc.xml
- |— 1000b53d-e327-4908-b710-8ae168c37f1d.bc.xml
- |— 12030a1b-e132-4d2d-9a70-d70d7391c2af.bc.xml
- |— 120da3cf-ed1e-44af-b2ba-4bae18a88604.bc.xml
- |— 16bc21b9-8e8b-4547-840e-987bd52e1744.bc.xml
- |— 17d0e193-99dc-46d8-8faa-00acb93e6e3d.bc.xml
- |— 18cbc4d0-2649-4d96-8840-2b72ad5d8bf1.bc.xml
- |— 198656a8-4d75-435b-ab4c-af2a1ffcb939.bc.xml
- |— 1c9f1976-fe31-4ef5-9ae5-22523cb80020.bc.xml
- |— 2643ea8b-1470-4a68-a68a-a87c953472c8.bc.xml
- |— 2c5b3e4b-2cde-4812-a35b-82b888492757.bc.xml
- |— 2f71fa0b-a695-4030-be35-d8a1c98c139f.bc.xml
- |— 333baa65-d5ab-410e-9625-d543df15e5a0.bc.xml
- |— 33da9eb3-913e-4d27-aeda-40a04c35a5cf.bc.xml
- |— 34f6b180-0b12-4e67-930c-48ede180d22b.bc.xml
- |— 35120db7-97fa-4f5e-8bbc-7390e15842b1.bc.xml
- |— 43076e33-3548-4927-a4b3-b582d3e16715.bc.xml
- |— 442b3d0e-eb6c-45a6-af19-3546ea2b20a0.bc.xml
- |— 49d1912f-ce42-4ba0-b849-ef0a4b9048a4.bc.xml
- |— 4a53c636-a0e1-4ee0-9fce-b61f222dfe3e.bc.xml
- |— 4ae40a96-ec63-4a55-b4fd-ade80811cff0.bc.xml
- |— 4e73c93f-9602-46e7-ab01-ea0d72894d95.bc.xml



| 4f9fb440-fe75-4743-aba6-2835b5d3d40e.bc.xml
| 519e01e1-ab18-46d4-ac17-3fc5a46a46a1.bc.xml
| 5298e769-69d2-4c94-8b97-f6fd0fd498bf.bc.xml
| 5751b65c-04bd-4a74-8d8d-a7b64e0c80b6.bc.xml
| 5d1f3b4f-c4fc-4b4d-be4b-e5e577d6acfa.bc.xml
| 5d6763fa-8eb2-4b57-aa9a-a2b85e03efed.bc.xml
| 5ed13fec-e156-4ca6-a555-e70b623e5347.bc.xml
| 5f8418e8-4db4-4e0b-8939-15809d7fe7dc.bc.xml
| 64863d05-33c0-4a11-b145-ad73edd93c18.bc.xml
| 691290dc-8856-403f-b97e-bf64d1366976.bc.xml
| 6aab98e2-8678-49c3-9645-d4361ed9c47f.bc.xml
| 6ff02af2-8de3-4a48-9e2d-e08de635d2a7.bc.xml
| 74bfceff-5197-45ed-86a5-21b83d3551ae.bc.xml
| 79eadb15-8888-4890-b47d-6ed27864e39c.bc.xml
| 7f4e3148-8f7f-4001-ae83-681f18c521d2.bc.xml
| 8064e88d-e02a-4498-8b95-b64fb01154f1.bc.xml
| 8a647dd1-6ed4-423e-93b4-e115e75bb6e0.bc.xml
| 95261c53-2790-4829-891c-3b0546a8f46d.bc.xml
| 98659694-609b-494f-8d72-6bbfa5a01550.bc.xml
| a02bda97-1f09-4e66-bbf5-0f89d5f82666.bc.xml
| a2d6414b-e74e-4c54-be25-e5cf50261c92.bc.xml
| a3d13771-4af1-49b7-b31d-5432f0cab8c8.bc.xml
| a4841ff0-ce34-497f-ade8-1b6ece21846b.bc.xml
| ab5d61ca-01e3-4008-a334-00446b6cb3f5.bc.xml
| adb48f2f-f6f7-411c-aa03-a08a2fb5c0e5.bc.xml
| adffc5c4-8788-411e-a77b-2a45faa1693f.bc.xml
| b6f0701c-e860-419a-b324-243845bb5a02.bc.xml
| c40c0264-31a5-4221-a86b-ecc282247867.bc.xml
| c45e09fd-54ba-48a3-a5d3-75a85590753b.bc.xml
| c7702ef7-d95a-4fa1-9af4-9cf59bc31160.bc.xml
| c7eb64f1-8109-44e7-9617-80dc9bffe432.bc.xml
| c994fd5e-5942-432a-9a44-da99469f3ad4.bc.xml
| d62f0a6e-04a2-4f1e-a41c-de46683af81b.bc.xml
| d8e789d6-2dc5-463f-9e6c-2b1216582a9e.bc.xml
| deployment.properties
| e1722d7c-7c7c-470a-bc4e-8932b00b0114.bc.xml
| ele16d8a-8191-4e64-9bc6-59fb66dfe738.bc.xml
| e4800049-c4fd-47e5-a1b4-a2b5979fa3e0.bc.xml
| e6602a41-e54e-44ee-97cc-3bd4f27442e7.bc.xml
| e80a57a7-f23a-4669-a48b-656fe1022714.bc.xml
| f084aa95-aecb-47f2-b004-5aba1923073f.bc.xml
| f830f2fc-40c7-4d55-a078-9643c62d52d1.bc.xml
| fced1f16-f44c-41f0-ac3a-2a2d4cddb9e.bc.xml

```

├─ ffcadf57-8ac8-429d-abc1-19f510a1196c.bc.xml
├─ TestSpecAttributeLinkedItems.bc.xml
custom
├─ boXML
│   ├── ItemCustProfile.xsd
│   ├── ItemProfile.xsd
│   ├── ItemSupplierProfile.xsd
│   ├── PoProfile.xsd
│   ├── PsProfile.xsd
│   ├── SerialUsage.xsd
│   ├── SoProfile.xsd
│   ├── WoBillProfile.xsd
│   ├── WoProfile.xsd
│   └─ WorkOrderBookedSerial.xsd
├─ content
├─ fldhelp
│   ├── fieldhlp_srn.fhd
│   └─ mgfld1.p
├─ qdoc
│   ├── events
│   │   └─ custom
│   │       └─ pawoco-ERP3_1.xml
│   ├── schemas
│   │   └─ custom
│   │       └─ .branches
│   │           └─ eB3
│   │               ├── backflushWOByPack-ERP3_1.xsd
│   │               ├── bookSalesOrderSerial-ERP3_1.xsd
│   │               ├── bookSalesOrderSerialResponse-ERP3_1.xsd
│   │               ├── bookWOSerial-ERP3_1.xsd
│   │               ├── bookWOSerialResponse-ERP3_1.xsd
│   │               ├── bulkLoadQualityTestSpec-ERP3_1.xsd
│   │               ├── bulkLoadQualityTestSpec-ERP3_2.xsd
│   │               ├── changePackStage-ERP3_1.xsd
│   │               ├── changeSerialMaster-ERP3_1.xsd
│   │               ├── copyItemMaster-ERP3_3.xsd
│   │               ├── copyItemMasterResponse-ERP3_3.xsd
│   │               ├── correctRepReceiptPack-ERP3_1.xsd
│   │               ├── correctWOREceiptbyPack-ERP3_1.xsd
│   │               ├── countPackTag-ERP3_1.xsd
│   │               ├── createOpenLotAttributeOrder-ERP3_1.xsd
│   │               ├── createPackByPL-ERP3_1.xsd
│   │               └─ createPackByPLResponse-ERP3_1.xsd

```


| — maintainItemAttributeCategory-ERP3_1.xsd
 | — maintainItemAttribute-ERP3_1.xsd
 | — maintainItemCustomerProfile-ERP3_1.xsd
 | — maintainItemMaster-ERP3_8.xsd
 | — maintainItemMasterResponse-ERP3_8.xsd
 | — maintainItemPackaging-ERP3_1.xsd
 | — maintainItemPackagingResponse-ERP3_1.xsd
 | — maintainItemProfile-ERP3_1.xsd
 | — maintainItemSupplierProfile-ERP3_1.xsd
 | — maintainItemTestLink-ERP3_1.xsd
 | — maintainLabelMaster-ERP3_2.xsd
 | — maintainLotAttributeOrder-ERP3_1.xsd
 | — maintainPackagingStructure-ERP3_1.xsd
 | — maintainPackagingStructureResponse-ERP3_1.xsd
 | — maintainPackBuild-ERP3_1.xsd
 | — maintainPackBuild-ERP3_2.xsd
 | — maintainPackBuildResponse-ERP3_1.xsd
 | — maintainPackBuildResponse-ERP3_2.xsd
 | — maintainPackCode-ERP3_1.xsd
 | — maintainPackCodeResponse-ERP3_1.xsd
 | — maintainPackCreate-ERP3_1.xsd
 | — maintainPackCreateResponse-ERP3_1.xsd
 | — maintainPackDecomm-ERP3_1.xsd
 | — maintainPackDecommResponse-ERP3_1.xsd
 | — maintainPackReceiptByWO-ERP3_1.xsd
 | — maintainPackReceiptByWOResponse-ERP3_1.xsd
 | — maintainPackReceipt-ERP3_1.xsd
 | — maintainPackReceiptResponse-ERP3_1.xsd
 | — maintainPackRemove-ERP3_1.xsd
 | — maintainPackRemove-ERP3_2.xsd
 | — maintainPackRemoveResponse-ERP3_1.xsd
 | — maintainPackRemoveResponse-ERP3_2.xsd
 | — maintainPackTransfer-ERP3_1.xsd
 | — maintainPackTransferLot-ERP3_1.xsd
 | — maintainPackTransferLotResponse-ERP3_1.xsd
 | — maintainPackTransferResponse-ERP3_1.xsd
 | — maintainPoLineProfile-ERP3_1.xsd
 | — maintainPOShipperReceipt-ERP3_2.xsd
 | — maintainPOShipperReceiptResponse-ERP3_2.xsd
 | — maintainPOShipperUnloading-ERP3_2.xsd
 | — maintainPOShipperUnloadingResponse-ERP3_2.xsd
 | — maintainProdOpAttributes-ERP3_1.xsd
 | — maintainQualityOrderAttributes-ERP3_1.xsd

```

|      | ── maintainQualityOrder-ERP3_2.xsd
|      | ── maintainQualityOrderTestRecord-ERP3_1.xsd
|      | ── maintainQualityTestSpec-ERP3_1.xsd
|      | ── maintainQualityTestSpecStatus-ERP3_1.xsd
|      | ── maintainSerialIDRange-ERP3_1.xsd
|      | ── maintainSerialIDRange-ERP3_2.xsd
|      | ── maintainSerialIDRangeResponse-ERP3_1.xsd
|      | ── maintainSerialRange-ERP3_1.xsd
|      | ── maintainSoLineProfile-ERP3_1.xsd
|      | ── maintainTestItemLink-ERP3_1.xsd
|      | ── maintainTestSpecification-ERP3_1.xsd
|      | ── maintainTruckLoad-ERP3_1.xsd
|      | ── maintainWeightUpdate-ERP3_1.xsd
|      | ── maintainWOComponentProfile-ERP3_1.xsd
|      | ── maintainWorkOrderOperationTestRecord-ERP3_1.xsd
|      | ── maintainWorkOrderProfile-ERP3_1.xsd
|      | ── mergePack-ERP3_1.xsd
|      | ── moveDOShipper-ERP3_2.xsd
|      | ── moveDOShipperResponse-ERP3_2.xsd
|      | ── moveSOShipper-ERP3_2.xsd
|      | ── moveSOShipperResponse-ERP3_2.xsd
|      | ── packDistributeOrder-ERP3_2.xsd
|      | ── packDistributeOrderResponse-ERP3_2.xsd
|      | ── packIssueResponse-ERP3_1.xsd
|      | ── packSalesOrder-ERP3_2.xsd
|      | ── packSalesOrderResponse-ERP3_2.xsd
|      | ── packSplit-ERP3_1.xsd
|      | ── pickDistributeOrder-ERP3_2.xsd
|      | ── pickDistributeOrderResponse-ERP3_2.xsd
|      | ── pickSalesOrder-ERP3_2.xsd
|      | ── pickSalesOrderResponse-ERP3_2.xsd
|      | ── receiveDOByPack-ERP3_1.xsd
|      | ── receivePackByPL-ERP3_1.xsd
|      | ── receivePackByPLResponse-ERP3_1.xsd
|      | ── recordBackflush-ERP3_5.xsd
|      | ── recordBackflushResponse-ERP3_5.xsd
|      | ── repackage-ERP3_1.xsd
|      | ── returnPOPack-ERP3_1.xsd
|      | ── returnPOPackResponse-ERP3_1.xsd
|      | ── returnWOComponentByPack-ERP3_1.xsd
|      | ── scrapInventoryPack-ERP3_1.xsd
|      | ── transferMultiPack-ERP3_1.xsd
|      | ── transferMultiPackResponse-ERP3_1.xsd

```

```

    |
    | └─ transferRepPicklistPack-ERP3_1.xsd
    | └─ unloadDistributionOrder-ERP3_1.xsd
└─ serialization-qdoc.xml
data
└─ fhd
    └─ fieldhlp_srn.fhd
menu-collection
└─ 39193c9d-f278-4497-924e-6df55661b8d2
└─ d7fcc03b-2d0a-48b1-b886-0e1433d1aefd
└─ d9ae5d19-45a5-46f6-9974-e343e54d85d7.delete
└─ deployment.properties
mkdt
└─ com
    └─ qad
        └─ shell
            └─ browse
                └─ custom
                    └─ xq013.p.delete
                    └─ xq016.p.delete
                    └─ xq017.p.delete
                    └─ xq018.p.delete
                    └─ xq019.p.delete
                    └─ xq020.p.delete
                    └─ xq021.p.delete
                    └─ xq022.p.delete
                    └─ xq023.p.delete
                    └─ xq024.p.delete
                    └─ xq025.p.delete
                    └─ xq026.p.delete
                    └─ xq027.p.delete
                    └─ xq028.p.delete
                    └─ xq029.p.delete
                    └─ xq030.p.delete
                    └─ xq031.p.delete
                    └─ xq032.p.delete
                    └─ xq033.p.delete
                    └─ xq034.p.delete
                    └─ xq035.p.delete
                    └─ xq036.p.delete
                    └─ xq037.p.delete
                    └─ xq038.p.delete
                    └─ xq039.p.delete
                    └─ xq040.p.delete

```

```

|       |— xq041.p.delete
|       |— xq043.p.delete
|       |— xq044.p.delete
|       |— xq045.p.delete
|       |— xq046.p.delete
|       |— xq047.p.delete
|       |— xq049.p.delete
└─ report
    └─ reports
        └─ .branches
            └─ eB3
                └─ ee2012
                    └─ QAD_PicklistPreShipperAuto.meta.xml
                    └─ QAD_PicklistPreShipperAuto.p
                    └─ QAD_PrintBOL.p
                    └─ QAD_PrintSO.meta.xml
                    └─ QAD_PrintSO.p
                    └─ QAD_SalesOrderShipperPrint.meta.xml
                    └─ QAD_SalesOrderShipperPrint.p
                    └─ sosl01rp.p
                    └─ sososl01.p
                    └─ sososlds.i
                └─ ee2013
                    └─ QAD_PicklistPreShipperAuto.meta.xml
                    └─ QAD_PicklistPreShipperAuto.p
                    └─ QAD_PrintBOL.p
                    └─ QAD_PrintSO.meta.xml
                    └─ QAD_PrintSO.p
                    └─ QAD_SalesOrderShipperPrint.meta.xml
                    └─ QAD_SalesOrderShipperPrint.p
                    └─ sosl01rp.p
                    └─ sososl01.p
                    └─ sososlds.i
                └─ ee2014
                    └─ QAD_PicklistPreShipperAuto.meta.xml
                    └─ QAD_PicklistPreShipperAuto.p
                    └─ QAD_PrintBOL.p
                    └─ QAD_PrintSO.meta.xml
                    └─ QAD_PrintSO.p
                    └─ QAD_SalesOrderShipperPrint.meta.xml
                    └─ QAD_SalesOrderShipperPrint.p
                    └─ sosl01rp.p
                    └─ sososl01.p

```

```

|      └─ sososlds.i
|      └─ ee2015
|      └─
QAD_PendingPOShipperUnloadReport.meta.all
|      └─
QAD_PendingPOShipperUnloadReport.meta.xml
|      └─ QAD_PendingPOShipperUnloadReport.p
|      └─ QAD_PicklistPreShipperAuto.meta.xml
|      └─ QAD_PicklistPreShipperAuto.p
|      └─ QAD_PODiscrepanciesReport.meta.all
|      └─ QAD_PODiscrepanciesReport.meta.xml
|      └─ QAD_PODiscrepanciesReport.p
|      └─ QAD_PrintBOL.p
|      └─ QAD_PrintSO.meta.xml
|      └─ QAD_PrintSO.p
|      └─ QAD_SalesOrderShipperPrint.meta.xml
|      └─ QAD_SalesOrderShipperPrint.p
|      └─ QAD_SerialDeleteArchive.meta.all
|      └─ QAD_SerialDeleteArchive.meta.xml
|      └─ QAD_SerialDeleteArchive.p
|      └─ sosl01rp.p
|      └─ sososl01.p
|      └─ sososlds.i
|      └─ ee2016
|      └─
QAD_PendingPOShipperUnloadReport.meta.all
|      └─
QAD_PendingPOShipperUnloadReport.meta.xml
|      └─ QAD_PendingPOShipperUnloadReport.p
|      └─ QAD_PicklistPreShipperAuto.meta.xml
|      └─ QAD_PicklistPreShipperAuto.p
|      └─ QAD_PODiscrepanciesReport.meta.all
|      └─ QAD_PODiscrepanciesReport.meta.xml
|      └─ QAD_PODiscrepanciesReport.p
|      └─ QAD_PrintBOL.p
|      └─ QAD_PrintSO.meta.xml
|      └─ QAD_PrintSO.p
|      └─ QAD_SalesOrderShipperPrint.meta.xml
|      └─ QAD_SalesOrderShipperPrint.p
|      └─ QAD_SerialDeleteArchive.meta.all
|      └─ QAD_SerialDeleteArchive.meta.xml
|      └─ QAD_SerialDeleteArchive.p
|      └─ sosl01rp.p
|      └─ sososl01.p

```



```

|   └─ sosolds.i
|   └─ ee2017
|   └─
QAD_PendingPOShipperUnloadReport.meta.all
|   └─
QAD_PendingPOShipperUnloadReport.meta.xml
|   └─ QAD_PendingPOShipperUnloadReport.p
|   └─ QAD_PODiscrepanciesReport.meta.all
|   └─ QAD_PODiscrepanciesReport.meta.xml
|   └─ QAD_PODiscrepanciesReport.p
|   └─ QAD_SerialDeleteArchive.meta.all
|   └─ QAD_SerialDeleteArchive.meta.xml
|   └─ QAD_SerialDeleteArchive.p
|   └─ MetaDataHelper.p
|   └─ pasrdf.i
|   └─ QAD_CertificateOfAnalysisPrint.meta.all
|   └─ QAD_CertificateOfAnalysisPrint.meta.xml
|   └─ QAD_CertificateOfAnalysisPrint.p
|   └─ QAD_CertificateOfAnalysisReprint.meta.all
|   └─ QAD_CertificateOfAnalysisReprint.meta.xml
|   └─ QAD_CertificateOfAnalysisReprint.p
|   └─ QAD_CycleCountWorksheetPrint.meta.all
|   └─ QAD_CycleCountWorksheetPrint.meta.xml
|   └─ QAD_CycleCountWorksheetPrint.p
|   └─ QAD_InventoryBalanceUpdate.meta.all
|   └─ QAD_InventoryBalanceUpdate.meta.xml
|   └─ QAD_InventoryBalanceUpdate.p
|   └─ QAD_ItemLotAttributeDeleteArchive.meta.all
|   └─ QAD_ItemLotAttributeDeleteArchive.meta.xml
|   └─ QAD_ItemLotAttributeDeleteArchive.p
|   └─ QAD_ItemProfileReport.meta.all
|   └─ QAD_ItemProfileReport.meta.xml
|   └─ QAD_ItemProfileReport.p
|   └─ QAD_ItemTestSpecLinkReport.meta.all
|   └─ QAD_ItemTestSpecLinkReport.meta.xml
|   └─ QAD_ItemTestSpecLinkReport.p
|   └─ QAD_LotAttributeOrderReport.meta.all
|   └─ QAD_LotAttributeOrderReport.meta.xml
|   └─ QAD_LotAttributeOrderReport.p
|   └─ QAD_MultiplePackStageChange.meta.all
|   └─ QAD_MultiplePackStageChange.meta.xml
|   └─ QAD_MultiplePackStageChange.p
|   └─ QAD_MultipleWOReleasePrint.meta.all
|   └─ QAD_MultipleWOReleasePrint.meta.xml

```

```

    |— QAD_MultipleWOReleasePrint.p
    |— QAD_PendingPOShipperUnloadReport.meta.all
    |— QAD_PendingPOShipperUnloadReport.meta.xml
    |— QAD_PendingPOShipperUnloadReport.p
    |— QAD_PicklistPreShipperAuto.meta.all
    |— QAD_PODiscrepanciesReport.meta.all
    |— QAD_PODiscrepanciesReport.meta.xml
    |— QAD_PODiscrepanciesReport.p
    |— QAD_PreshipperShipper.meta.all
    |— QAD_PreshipperShipper.meta.xml
    |— QAD_PreshipperShipper.p
    |— QAD_PrintBOL.meta.all
    |— QAD_PrintBOL.meta.xml
    |— QAD_PrintSO.meta.all
    |— QAD_ProductionTestReport.meta.all
    |— QAD_ProductionTestReport.meta.xml
    |— QAD_ProductionTestReport.p
    |— QAD_QualityOrderReport.meta.all
    |— QAD_QualityOrderReport.meta.xml
    |— QAD_QualityOrderReport.p
    |— QAD_RepetitivePicklistReport.meta.all
    |— QAD_RepetitivePicklistReport.meta.xml
    |— QAD_RepetitivePicklistReport.p
    |— QAD_SalesOrderShipperPrint.meta.all
    |— QAD_SalesOrderShipperPrint.meta.xml.delete
    |— QAD_SerialBookingByWOReport.meta.all
    |— QAD_SerialBookingByWOReport.meta.xml
    |— QAD_SerialBookingByWOReport.p
    |— QAD_SerialDeleteArchive.meta.all
    |— QAD_SerialDeleteArchive.meta.xml
    |— QAD_SerialDeleteArchive.p
    |—
QAD_SerialHierarchyDefinitionReport.meta.all
    |—
QAD_SerialHierarchyDefinitionReport.meta.xml
    |— QAD_SerialHierarchyDefinitionReport.p
    |—
QAD_SerialHierarchySimulationReport.meta.all
    |—
QAD_SerialHierarchySimulationReport.meta.xml
    |— QAD_SerialHierarchySimulationReport.p
    |—
QAD_SerialItemLabelFormatDefinitionReport.meta.all
    |—
QAD_SerialItemLabelFormatDefinitionReport.meta.xml

```

```

|
QAD_SerialItemLabelFormatDefinitionReport.p
|
|   QAD_SerializedInventoryReport.meta.all
|   QAD_SerializedInventoryReport.meta.xml
|   QAD_SerializedInventoryReport.p
|
QAD_SerialLabelFormatDefinitionReport.meta.all
|
QAD_SerialLabelFormatDefinitionReport.meta.xml
|
|   QAD_SerialLabelFormatDefinitionReport.p
|   QAD_SerialUsageExport.meta.all
|   QAD_SerialUsageExport.meta.xml
|   QAD_SerialUsageExport.p
|   QAD_TagDeleteArchive.meta.all
|   QAD_TagDeleteArchive.meta.xml
|   QAD_TagDeleteArchive.p
|   QAD_TagPrint.meta.all
|   QAD_TagPrint.meta.xml
|   QAD_TagPrint.p
|   QAD_TestRecordsByItemReport.meta.all
|   QAD_TestRecordsByItemReport.meta.xml
|   QAD_TestRecordsByItemReport.p
|   QAD_TestSpecificationReport.meta.all
|   QAD_TestSpecificationReport.meta.xml
|   QAD_TestSpecificationReport.p
|   QAD_UncountedTagReportUpdate.meta.all
|   QAD_UncountedTagReportUpdate.meta.xml
|   QAD_UncountedTagReportUpdate.p
|   QAD_WORecipePrint.meta.all
|   QAD_WORecipePrint.meta.xml
|   QAD_WORecipePrint.p
|   QAD_WorkOrderReleasePrint.meta.all
|   QAD_WorkOrderReleasePrint.meta.xml
|   QAD_WorkOrderReleasePrint.p

```

process-map

```

|
|   .branches
|   |
|   |   eB3
|   |   |
|   |   |   ee2012
|   |   |   |
|   |   |   |   1_SCP_EF.xml
|   |   |   |   1_VIP_EF.xml
|   |   |   |   Auto_2_3.xml
|   |   |   |   Auto.xml
|   |   |   |   CE_04_Order2Cash.xml
|   |   |   |   CE_04_P2P.xml

```




```

|   |   | Warehouse_4_3.xml
|   |   | Warehouse_4_4.xml
|   |   | Warehouse_4.xml
|   | ee2013
|   |   | 1_SCP_EF.xml
|   |   | 1_VIP_EF.xml
|   |   | CE_04_Order2Cash.xml
|   |   | CE_04_P2P.xml
|   |   | CE_04_Plan2Perform.xml
|   |   | ItemAttributeQuality_1_1_1.xml
|   |   | ItemAttributeQuality_1_1.xml
|   |   | ItemAttributeQuality_1_2_1.xml
|   |   | ItemAttributeQuality_1_2.xml
|   |   | ItemAttributeQuality_1_3_1.xml
|   |   | ItemAttributeQuality_1_3_2.xml
|   |   | ItemAttributeQuality_1_3_3.xml
|   |   | ItemAttributeQuality_1_3_4.xml
|   |   | ItemAttributeQuality_1_3_5.xml
|   |   | ItemAttributeQuality_1_3.xml
|   |   | ItemAttributeQuality_1_4.xml
|   |   | ItemAttributeQuality_1_5.xml
|   |   | ItemAttributeQuality_1_6.xml
|   |   | ItemAttributeQuality_1_7.xml
|   |   | ItemAttributeQuality_1.xml
|   |   | ManagePhysicalInventory.xml
|   |   | SAQ_home.xml
|   |   | Serialization_Cycle_Count.xml
|   |   | Serialization_Discrete_Prod.xml
|   |   | Serialization_Distribution.xml
|   |   | Serialization_Inventory.xml
|   |   | SerializationManagement.xml
|   |   | Serialization_Packaging.xml
|   |   | SerializationPurchasing.xml
|   |   | Serialization_Rep_Prod.xml
|   |   | SerializationSetup.xml
|   |   | Serialization_SO_Shipper.xml
|   | ee2014
|   |   | 1_SCP_EF.xml
|   |   | 1_VIP_EF.xml
|   |   | CE_04_Order2Cash.xml
|   |   | CE_04_P2P.xml
|   |   | CE_04_Plan2Perform.xml
|   |   | ItemAttributeQuality_1_1_1.xml

```



```
| | | ItemAttributeQuality_1_5.xml
| | | ItemAttributeQuality_1_6.xml
| | | ItemAttributeQuality_1_7.xml
| | | ItemAttributeQuality_1.xml
| | | ManagePhysicalInventory.xml
| | | Serialization_Cycle_Count.xml
| | | Serialization_Discrete_Prod.xml
| | | Serialization_Distribution.xml
| | | Serialization_Inventory.xml
| | | SerializationManagement.xml
| | | Serialization_Packaging.xml
| | | SerializationPurchasing.xml
| | | Serialization_Rep_Prod.xml
| | | SerializationSetup.xml
| | | └─ Serialization_SO_Shipper.xml
| └─ ee2016
└─ properties
    └─ properties_cs.xml
    └─ properties_de.xml
    └─ properties_en.xml
    └─ properties_es_es.xml
    └─ properties_es_mx.xml
    └─ properties_fr.xml
    └─ properties_it.xml
    └─ properties_ja.xml
    └─ properties_ko.xml
    └─ properties_nl.xml
    └─ properties_pl.xml
    └─ properties_pt.xml
    └─ properties_zh_cn.xml
    └─ properties_zh_tw.xml
report
└─ .branches
    └─ eB3
        └─ ee2012
            └─ QAD_PicklistPreShipperAuto.xml
            └─ QAD_PrintSO.xml
            └─ QAD_SalesOrderShipperPrint.xml
        └─ ee2013
            └─ QAD_PicklistPreShipperAuto.xml
            └─ QAD_PrintSO.xml
            └─ QAD_SalesOrderShipperPrint.xml
        └─ ee2014
```



```

|   |─ QAD_PicklistPreShipperAuto.xml
|   |─ QAD_PrintSO.xml
|   └─ QAD_SalesOrderShipperPrint.xml
└─ ee2015
|   |─ QAD_PendingPOShipperUnloadReport.xml
|   |─ QAD_PicklistPreShipperAuto.xml
|   |─ QAD_PODiscrepanciesReport.xml
|   |─ QAD_PrintSO.xml
|   |─ QAD_SalesOrderShipperPrint.xml
|   └─ QAD_SerialDeleteArchive.xml
└─ ee2016
|   |─ QAD_PendingPOShipperUnloadReport.xml
|   |─ QAD_PicklistPreShipperAuto.xml
|   |─ QAD_PODiscrepanciesReport.xml
|   |─ QAD_PrintSO.xml
|   |─ QAD_SalesOrderShipperPrint.xml
|   └─ QAD_SerialDeleteArchive.xml
└─ ee2017
|   |─ QAD_PendingPOShipperUnloadReport.xml
|   |─ QAD_PODiscrepanciesReport.xml
|   └─ QAD_SerialDeleteArchive.xml
└─ QAD_CertificateOfAnalysisPrint.xml
└─ QAD_CertificateOfAnalysisReprint.xml
└─ QAD_CycleCountWorksheetPrint.xml
└─ QAD_InventoryBalanceUpdate.xml
└─ QAD_ItemLotAttributeDeleteArchive.xml
└─ QAD_ItemProfileReport.xml
└─ QAD_ItemTestSpecLinkReport.xml
└─ QAD_LotAttributeOrderReport.xml
└─ QAD_MultiplePackStageChange.xml
└─ QAD_MultipleWOREleasePrint.xml
└─ QAD_PendingPOShipperUnloadReport.xml
└─ QAD_PODiscrepanciesReport.xml
└─ QAD_PreshipperShipper.xml
└─ QAD_ProductionTestReport.xml
└─ QAD_QualityOrderReport.xml
└─ QAD_RepetitivePicklistReport.xml
└─ QAD_SerialBookingByWOREport.xml
└─ QAD_SerialDeleteArchive.xml
└─ QAD_SerialHierarchyDefinitionReport.xml
└─ QAD_SerialHierarchySimulationReport.xml
└─ QAD_SerialItemLabelFormatReport.xml
└─ QAD_SerializedInventoryReport.xml

```

```
|— QAD_SerialLabelFormatReport.xml
|— QAD_SerialUsageExport.xml
|— QAD_TagDeleteArchive.xml
|— QAD_TagPrint.xml
|— QAD_TestRecordsByItemReport.xml
|— QAD_TestSpecificationReport.xml
|— QAD_UncountedTagReportUpdate.xml
|— QAD_WORecipePrint.xml
|— QAD_WorkOrderReleasePrint.xml
└─ templates
```