

QAD Automation Solutions: Data Collection Transaction Release Notes and Installation Instructions, Version 2017 EE

June 2018

These release notes include information about QAD Automated Solutions: Data Collection transactions.

***Installing Data Collection Transactions and Menus* 2**

***Data Collection Transactions Release Notes* 9**

Installing Data Collection Transactions and Menus

Artifact Location

The `as-setup` folder, which is located in the `#{DIST}` directory, contains all the transactions and menu `.xml` files that are used to configure Data Collection transactions.

The transaction `.xml` file is located in:

```
#{DIST}/as-setup/transactions/<App>/<module> directory
```

The menu `.xml` file is located in:

```
#{DIST}/as-setup/menus/<App> directory
```

Importing Transactions and Menus

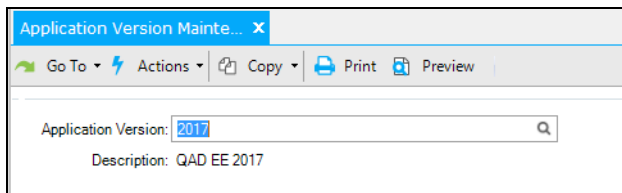
Important When importing Data Collection transactions and menus, you must import transactions before importing menus.

The following section describes how to import the transactions and transaction menus into Data Collection.

Log in to QAD EE environment and perform the following steps:

- 1 Open Application Version Maintenance (6.22.2) and create a new record for the application version.

Fig. 1
Application Version Maintenance



- 2 Open Transaction Definition Import/Export (6.23.4) and enter the following information to load the DC transactions into the system:

Field	Setting
Import/Export	Import
Directory	<code>#{DIST}/as-setup/transactions/<App>/<Module>/</code> For example, the transaction directories are as follows: EE/SAQ transactions: <ul style="list-style-type: none"> • <code>#{appdir}/dist/as-setup/transactions/saq/Inbound/</code> • <code>#{appdir}/dist/as-setup/transactions/saq/Outbound/</code> • <code>#{appdir}/dist/as-setup/transactions/saq/InventoryControl/</code> EAM transactions: <ul style="list-style-type: none"> • <code>#{appdir}/dist/as-setup/transactions/eam/</code> Production Orders transactions: <ul style="list-style-type: none"> • <code>#{appdir}/dist/as-setup/transactions//productionorder/</code>
File Mask	*.xml (Specify to show all transaction .xml files)

Field	Setting
Select All	Yes
Overwrite Existing	Yes (If the transactions are already available, selecting Yes will overwrite them.)
Delete	No (This will be inactive for the import function.)
Include Version in File Name	No (This will be inactive for the import function.)

Fig. 2
Importing DC Transactions

Transaction Definition Imp... x

Go To Actions Copy Print Preview Attach

Import/Export: Import

Directory: /apps/qad/ee/dist/as-setup/transactions/eam

File Mask: *

Select All:

Overwrite Existing:

Delete:

Include Version In File Name:

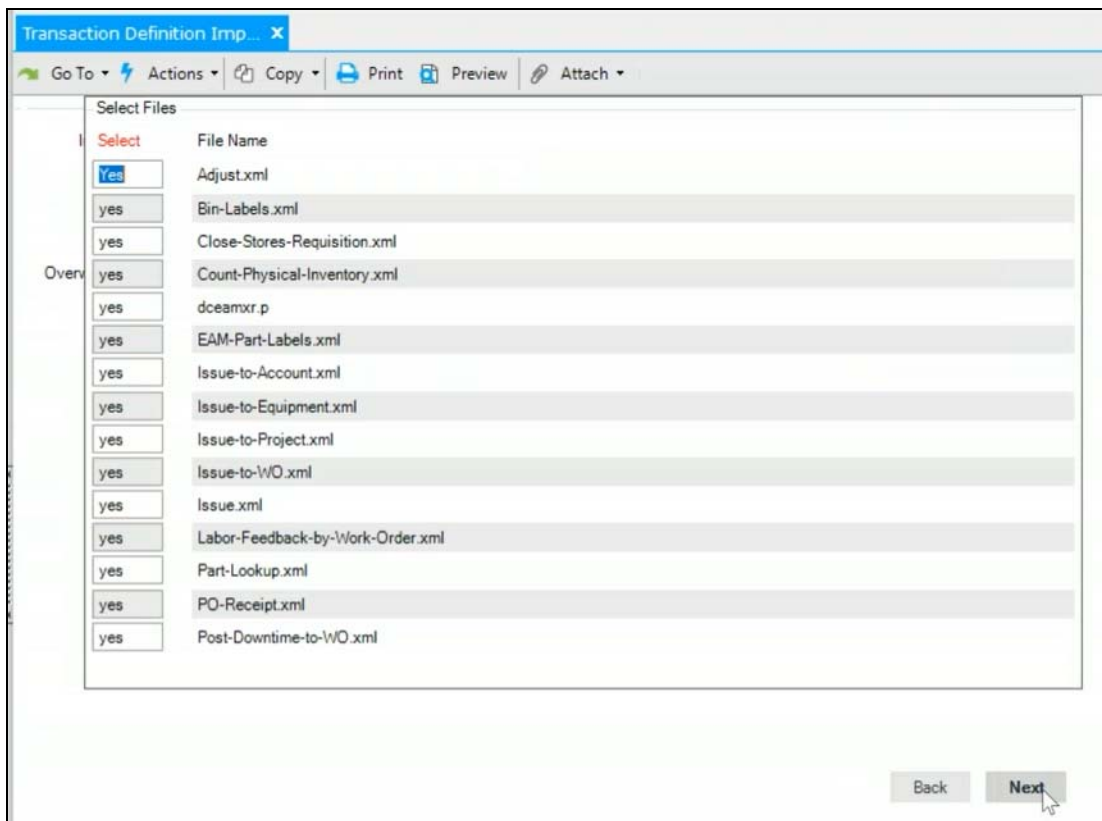
Output: page

- Once you have entered everything in Transaction Definition Import/Export, click Next. The following window appears showing the transactions that will be imported.

Note If you selected the Select All check box in the previous screen, all these fields will be set to Yes. If you do not want to import a specific transaction, set the field to No.

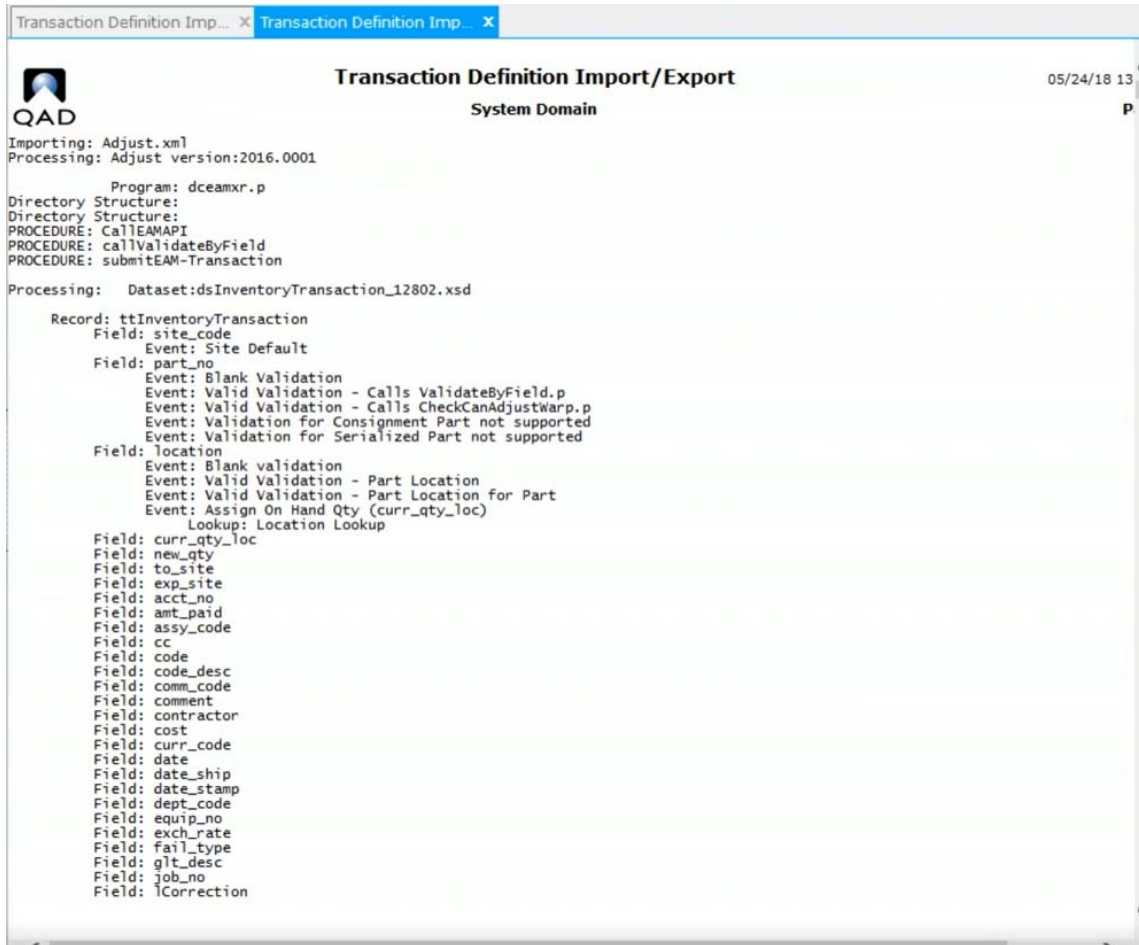
4 QAD Data Collection Transactions Package Release Notes and Installation Instructions

Fig. 3
Importing DC Transactions



4 Click Next to view the Transaction Definition Import/Export report.

Fig. 4
Importing DC Transactions

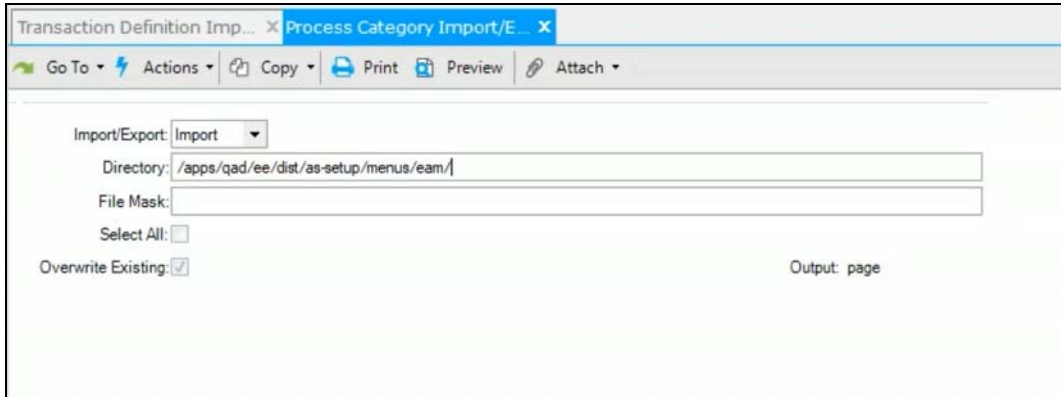


- 5 Repeat steps 2 through 4 to import additional transactions.
- 6 Once you have imported all the necessary Data Collection transactions, open Process Category Import Export (6.23.1) to import the Data Collection menus. Enter the following information in the fields:

Field	Setting
Import/Export	Import
Directory	$\${DIST}$ / as-setup/menus/ <App> / For example, the menu directories are as follows: EE/SAQ menus: <ul style="list-style-type: none"> • $\\${appdir}$ / dist/as-setup/menus/saq/ EAM menus: <ul style="list-style-type: none"> • $\\${appdir}$ / dist/as-setup/menus/eam/ Production Order menus: <ul style="list-style-type: none"> • $\\${appdir}$ / dist/as-setup/menus/productionorder/
File Mask	*.xml (Specify to show all transaction .xml files)
Select All	Yes
Overwrite Existing	Yes (If the menus are already available, selecting Yes will overwrite them.)

Field	Setting
Delete	No (This will be inactive for the import function.)
Include Version in File Name	No (This will be inactive for the import function.)

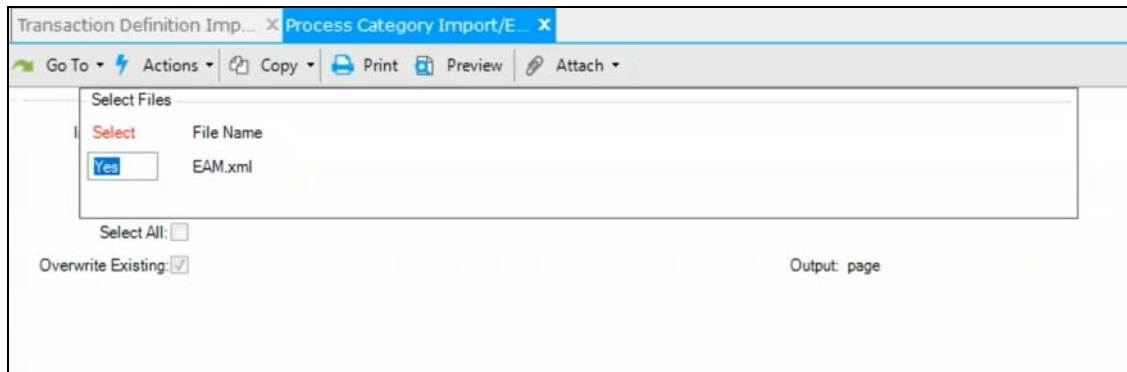
Fig. 5
Importing DC Transaction Menus



7 Once you have entered everything in Process Category Import/Export, click Next. The following window appears showing the menus that will be imported.

Note If you selected the Select All check box in the previous screen, all these fields will be set to Yes. If you do not want to import a specific menu, set the field to No.

Fig. 6
Importing DC Menus



8 Click Next to view the Process Category Import/Export report.

Fig. 7
Importing DC Menus

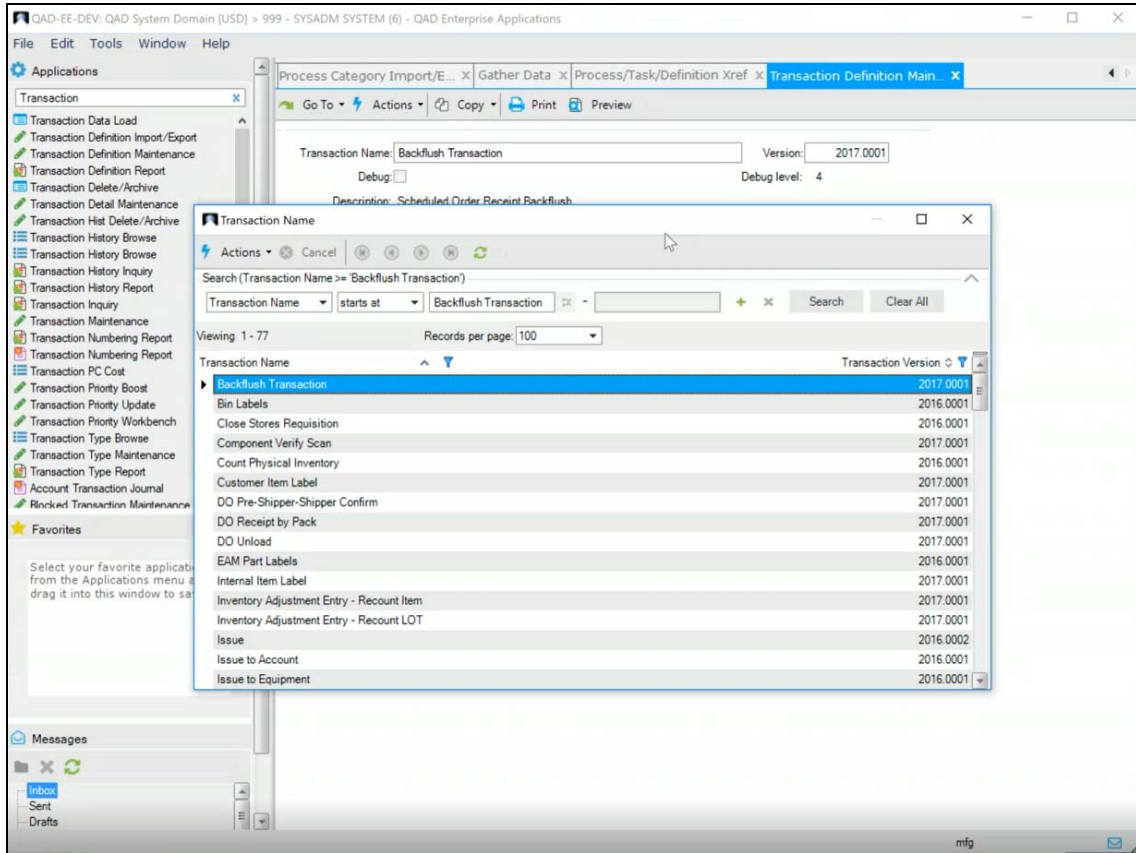
Sequence Transaction Name	Transaction Ve Description
Category Name: EAM	
Process: Inventory	
Task Type: SCAN DATA	
Program Name: dcgetdat.p	
Sequence Transaction Name	Transaction Ve Description
1 Relocate	2016.0001
20 Part Lookup	2016.0001
30 EAM Part Labels	2016.0001
31 Bin Labels	2016.0001
Task Type: SCAN DATA	
Program Name: dcgetdat.p	
Sequence Transaction Name	Transaction Ve Description
1 Adjust	2016.0001
Task Type: SCAN DATA	
Program Name: dcgetdat.p	
Sequence Transaction Name	Transaction Ve Description
1 Count Physical Inventory	2016.0001
Process: Inbound	
Task Type: SCAN DATA	
Program Name: dcgetdat.p	
Sequence Transaction Name	Transaction Ve Description
1 PO Receipt	2016.0001
Process: Stores_Requisitions	
Task Type: SCAN DATA	
Program Name: dcgetdat.p	
Sequence Transaction Name	Transaction Ve Description
2 Close Stores Requisition	2016.0001
3 Part Lookup	12802.0001
20 Part Lookup	2016.0001
Process: Maintenance	
Task Type: SCAN DATA	
Program Name: dcgetdat.p	
Sequence Transaction Name	Transaction Ve Description
1 Issue to WO	2016.0001
2 Issue to Equipment	2016.0001

9 Repeat steps 6 through 8 to import additional menus.

Verify Installation

Open Transaction Definition Maintenance (6.16) and verify the Data Collection transactions and menus were installed correctly. Select the Transaction Name lookup and verify the transactions that you installed are listed.

Fig. 8
Verify Installation



Data Collection Transactions Release Notes

Important The QAD Automation Solutions: Data Collection transaction templates and workbenches that are delivered in EE, EAM, and Production Orders are supported by QAD Services or a QAD Partner. Please note that because the templates are highly configurable and may be modified to meet any implementation requirements, you must use them at your own risk and discretion. In the event that you require support for any QAD Automation Solutions: Data Collection templates, contact QAD Services or a QAD Partner.

Compatibility

The following table outlines which QAD product versions are compatible and certified to work with Data Collection transaction banners.

Transaction Banners	Media Delivery	Certified On		
		2017EE	SAQ 2.7.1	Production Orders 2.0
ERP Inventory	Delivered in the SAQ 2.7.1 module package	✓	✓	
ERP Inbound		✓	✓	
ERP Outbound		✓	✓	
ERP Production	Delivered in the Production Order 2.0 module package	✓	✓	✓
EAM	Delivered in the EAM 2017.1EE module package	✓		

Data Collection Transactions

The following tables list the Data Collection transactions that are provided with QAD 2017EE, SAQ 2.7.1, and Production Orders 2.0:

- ERP Inventory, Inbound, and Outbound Transactions
- ERP Production Transactions
- EAM Transactions

ERP Inventory, Inbound, and Outbound Transactions

The following ERP Inventory, Inbound, and Outbound transactions are provided in QAD 2017.1EE:

Table 1
ERP Inventory, Inbound, and Outbound Transactions (1 of 7)

Category / Banner	Task	Menu #	Transaction Name	.NET Menu Name (Menu #, Program)	Description	Exclusions and Limitations
Inventory	Inventory Transfer	1.1.1	Transfer - Item	Trans: Inventory Transfer with Lot Serial Change - Item App: Inventory Transfer with Lot/Serial Change (3.4.3, iclotr03.p)	Transfer ITEM between locations.	
Inventory	Inventory Transfer	1.1.3	Transfer - Lot	Trans: Inventory Transfer with Lot Serial Change - Lot App: Inventory Transfer with Lot/Serial Change (3.4.3, iclotr03.p)	Transfer LOT between locations.	Supplier Performance must be disabled per API Defect.
Inventory	Inventory Transfer	1.1.4	Transfer - Pack	Trans: Pack Transfer with L/S Change App: Pack Transfer (3.17.8, papatr02.p)	Transfer PACK between locations.	Supplier Performance must be disabled per API Defect.
Inventory	Packaging	1.3.1	Pack Create by Pack Code	Trans: Pack Create By Pack Code App: Pack Create by Pack Code (3.17.2, papacr01.p)	Create package ID (label) before receiving items/lots/serial inventory into it.	
Inventory	Packaging	1.3.3	Pack Build - Item	Trans: Pack Build - Item App: Pack Build (3.17.3, papabd.p)	Create/add Item, Lots, or Serialized inventory to a pack.	
Inventory	Packaging	1.3.4	Pack Build - LP	Trans: Pack Build - LP App: Pack Build (3.17.3, papabd.p)	Add an existing package to a new or existing parent package. For example, you can add several boxes to a pallet.	
Inventory	Packaging	1.3.5	Pack Merge	Trans: Pack Merge App: Pack Merge (3.17.15, papamg.p)	Merge packages together for packages with Active and Picked stages.	
Inventory	Packaging	1.3.7	Pack Remove	Trans: Pack Remove App: Pack Build (3.17.15, paparm.p)	Remove and transfer items or child packs from a master pack.	
Inventory	Packaging	1.3.9	Pack Commission	Trans: Pack Commission App: Pack Commission (3.17.4, papacm.p)	Activate an inactive serial ID, providing the ability for users to transact against it.	
Inventory	Packaging	1.3.10	Pack Decommission	Trans: Pack Decommission App: Pack Decommission (3.17.6, papadecm.p)	Decommission a license plate or serial ID, preventing transaction processing against it.	
Inventory	Packaging	1.3.11	Pack Split	Trans: Pack Split App: Pack Split (3.17.16, papasp.p)	Split a package into multiple packages.	

Table 1
ERP Inventory, Inbound, and Outbound Transactions (2 of 7)

Category / Banner	Task	Menu #	Transaction Name	.NET Menu Name (Menu #, Program)	Description	Exclusions and Limitations
Inventory	Adjustment	1.7.1	Recount - Item	Trans: Inventory Adjustment Entry - Recount Item App: Inventory Adjustment Entry (3.13.2, icccaj.p)	Perform recount count for item.	Transaction can be configured to perform an Initial Count.
Inventory	Adjustment	1.7.2	Recount - Lot	Trans: Inventory Adjustment Entry - Recount Lot App: Inventory Adjustment Entry (3.13.2, icccaj.p)	Perform recount count for Lot.	Transaction can be configured to perform an Initial Count.
Inventory	Adjustment	1.7.5	Receipts - Unplanned	Trans: Receipts - Unplanned App: Receipts - Unplanned (3.9, icunrc.p)	Perform a receipt unplanned for item/lot.	
Inventory	Adjustment	1.7.6	Issues - Unplanned	Trans: Issues - Unplanned App: Issues - Unplanned (3.7, icunis.p)	Perform a issues unplanned for item/lot.	
Inventory	Adjustment	1.7.9	Tag Recount Entry - Pack	Trans: Pack Tag Recount Entry - LP App: Pack Tag Count Entry (3.16.3.3, paptrc.p) Linked Trans: Tag Recount Entry linked	Perform a Tag Count for packaged and loose inventory. Replaces: picmt2.p	
Inventory	Adjustment	1.7.10	Tag Recount Entry - Pack	Trans: Pack Tag Recount Entry - LP App: Pack Tag Recount Entry (3.16.3.4, paptrc.p) Linked Trans: Tag Recount Entry linked	Perform a Tag Count for packaged and loose inventory. Replaces: picmt2.p	
Inventory	Adjustment	1.7.20	Internal Item Label	Trans: Internal Item Label App: NA	Print an internal item label.	A sample label format is provided.
Inventory	Adjustment	1.7.21	Quality Label	Trans: Label Inbound Release-Reject App: NA	Print an item/lot quality label, identifying status of the item, such as rejected or approved.	A sample label format is provided.
Inbound	Purchase Receipts	3.1.1	Purchase Order Receipt	Trans: Purchase Order Receipts App: Purchase Order Receipts (5.13.1, poporc.p)	Receive against discrete and scheduled orders.	Not configured for regulatory and lot attributes.

Table 1
ERP Inventory, Inbound, and Outbound Transactions (3 of 7)

Category / Banner	Task	Menu #	Transaction Name	.NET Menu Name (Menu #, Program)	Description	Exclusions and Limitations
Inbound	Purchase Receipts	3.1.3	PO Shipper Receipt	Trans: PO Shipper Receipt App: PO Shipper Receipt (5.13.20, rsporc.p)	Confirm a shipper receipt.	
Inbound	Purchase Receipts	3.1.4	PO Shipper Create by Pack	Trans: PO Shipper Maintenance by Pack App: PO Shipper Maintenance (5.13.14, rsshmt.p)	Create a Shipper with packaging units. This is applicable when ASN's are not received via EDI or you desire to license plate incoming purchase receipts.	
Inbound	Purchase Receipts	3.1.4.1	Linked	Trans: Pack Create by PO Shipper Version App: Pack Create by PO/Shipper (5.13.12.3, papocr.p)	Called as linked transaction to facilitate the creation of packs associated to a shipper.	There are over a dozen possible use cases that will require configuration changes specific to your implementation.
Inbound	Purchase Receipts	3.1.5	PO Unload by Pack	Trans: Pending PO Shipper Unload by Pack App: Pending PO Shipper Unload (5.13.12.13, papoul.p)	Receive packs, validating against a pre-shipper.	
Inbound	Purchase Receipts	3.1.7	DO Receipt by Pack	Trans: DO Receipt By Pack App: DO Receipt By Pack (12.9.13, padorc.p)	Confirm a shipper receipt of pack.	Configured to automatically decommission the pack upon receipt.
Inbound	Purchase Receipts	3.1.8	DO Unload	Trans: DO Unload App: DO Unload (12.9.15, padoul.p)	Receive packs, validating against a DO-shipper.	
Inbound	Purchase Receipts	3.1.15	Material Putaway	Trans: Production Order Item Putaway App: Inventory Transfer with Lot/Serial Change (3.4.3, iclotr03.p)	Directs material handlers where to put away received materials. Note: Requires implementation services to refine/develop putaway rules/logic. The putaway logic provided with this transaction is not supported and is used for reference only.	For assistance on the putaway rule logic, please contact QAD Services.
Inbound	Purchase Receipts	3.1.20	Purchase Order Label	Trans: PO Label Print App: NA	Print/reprint inbound receipts label.	A sample label.

Table 1
ERP Inventory, Inbound, and Outbound Transactions (4 of 7)

Category / Banner	Task	Menu #	Transaction Name	.NET Menu Name (Menu #, Program)	Description	Exclusions and Limitations
Outbound	Outbound	7.1.1	SO Bulk Pick - Transfer	Trans: Transfer With Lot/Erial Change - SO Bulk Pick App: Inventory Transfer (3.4.3, iclotr03.p)	Directs user to pick and transfer materials from warehouse to a packaging staging area, where users will later pick and package per pre-shipper requirements.	This transaction is provided for demonstration/conceptual purposes. No QAD Support provided. Please contact QAD Services for changes (picking logic) required for your implementation.
Outbound	Outbound	7.1.2	SO Pre-Shipper Create	Trans: Pre-Shipper-Shipper Picking - Create Shipper App: Pre-Shipper/Shipper Picking (7.8.1, pasopi.p)	Scan LP and create Sales Order Pre-Shipper on demand.	
Outbound	Outbound	7.1.5	Pre-Shipper Pick	Trans: Pre-Shipper-Shipper Picking-PARENT App: Calls linked transactions	Pre-Shipper picking for SO and DO where inventory is License Plated and you pick it per pre-shipper requirements.	
Outbound	Outbound	7.1.5-1	Linked	Trans: Pre-Shipper-Shipper Picking - Pick by LP App: Pre-Shipper/Shipper Picking (7.8.1, pasopi.p)	Called as linked transaction from parent transaction Pre-Shipper Pick - PARENT.	
Outbound	Outbound	7.1.5-2	Linked	Trans: Pre-Shipper-Shipper Picking - by DO App: Pre-Shipper/Shipper Picking (12.9.1, padopi.p)	Called as linked transaction from parent transaction Pre-Shipper Pick - PARENT.	
Outbound	Outbound	7.1.7	Pre-Shipper Pack	Trans: Pre-Shipper-Shipper Pack Build-PARENT App: Calls linked transactions	Pre-Shipper picking for SO and DO where inventory is loose and you pick and package it per pre-shipper requirements.	

Table 1
ERP Inventory, Inbound, and Outbound Transactions (5 of 7)

Category / Banner	Task	Menu #	Transaction Name	.NET Menu Name (Menu #, Program)	Description	Exclusions and Limitations
Outbound	Outbound	7.1.7-1	Linked	Trans: Pre-Shipper-Shipper Pack Build - DO App: Pre-Shipper/Shipper Pack Build (12.9.2 padopa.p) Linked Trans: Pack Transfer linked with prompt Linked Trans: LP Weight Modify linked with prompt Linked Trans: Transfer With Lot-Serial Change - Item Version	Called as linked transaction from parent transaction Pre-Shipper Pack Build - PARENT.	
Outbound	Outbound	7.1.7-2	Linked	Trans: Pre-Shipper-Shipper Pack Build - Item - SO App: Pre-Shipper/Shipper Pack Build (7.8.2, pasopa.p) Linked Trans: Pack Transfer linked with prompt Linked Trans: LP Weight Modify linked with prompt Linked Trans: Transfer With Lot-Serial Change - Item Version	Called as linked transaction from parent transaction Pre-Shipper Pack Build - PARENT.	
Outbound	Outbound	7.1.10	Sub Shipper Container	Trans: Sub Container Maintenance App: Sub Container Maintenance (18.22.5.4, rectmt.p)	Create Containers (License Plate) for shipment.	
Outbound	Outbound	7.1.11	Sub Shipper Pick	Trans: Sub Shipper Maintenance App: Sub Shipper Maintenance (18.22.5.5, reshmt.p)	Create Shipper, associate containers (License Plate) to Shipper.	
Outbound	Outbound	7.1.12	Move Pack between Shipper	Trans: Move Pack Between Pre-Shippers - Parent App: Linked Transactions	Move License Plates between SO/DO (Pre)Shippers for same ship-to.	

Table 1
ERP Inventory, Inbound, and Outbound Transactions (6 of 7)

Category / Banner	Task	Menu #	Transaction Name	.NET Menu Name (Menu #, Program)	Description	Exclusions and Limitations
Outbound	Outbound	7.1.12-1	Linked	Trans: Move Pack Between Pre-Shippers - SO App: Move Pack Between (Pre)Shippers (7.8.12, pasoshmv.p)	Move License Plates between SO (Pre)Shippers for same ship-to.	
Outbound	Outbound	7.1.12-2	Linked	Trans: Move Pack Between Pre-Shippers - DO App: Move Pack Between (Pre)Shippers (12.9.12, padoshmv.p)	Move License Plates between DO (Pre)Shippers for same ship-to.	
Outbound	Outbound	7.1.14	Pack Merge	Trans: Pack Merge App: 3.17.15 papamg.p	Merges License Plates and Packs within a (Pre)Shipper.	
Outbound	Outbound	7.1.15	Shipper LP Weight Modify	Trans: Shipper Data Maintenance App: Shipper Data Maintenance 7.8.6, patrkwt.p Linked Trans: License Plate Label Version	Modify weights of License Plates in (Pre)Shipper and reprint label.	
Outbound	Outbound	7.1.16	Pre-Shipper Convert to Shipper	Trans: Pre-Shipper Convert - Parent App: Linked Transactions	Convert SO/DO Pre-shipper to Shipper	
Outbound	Outbound	7.1.16-1	SO Pre-Shipper Convert to Shipper	Trans: Pre-Shipper-Shipper Print - SO App: PreShipper/Shipper Print (7.9.4, rcrp13.p) Linked Trans: Pre-Shipper Convert STD Linked Trans: Shipper Move - Linked	Convert SO Pre-Shipper to Shipper.	
Outbound	Outbound	7.1.16-2	Pre-Shipper Convert to Shipper	Trans: Pre-Shipper Convert - Parent App: Pre-Shipper/Shipper Print (7.9.4, rcrp13.p)	Convert SO/DO Pre-Shipper to Shipper	
Outbound	Outbound	7.1.18	Truck Load	Trans: Truck Load App: Truck Load (7.8.4, patrkld.p)	Validate content loaded into truck matches Shipper.	Does not support Sub-Contracting.
Outbound	Outbound	7.1.19	DO Shipper Confirm	Trans: DO Pre-Shipper-Shipper Confirm App: DO Pre-Shipper/Shipper Confirm (12.19.13, dodsois.p)	Confirm DO Shipper.	

Table 1
ERP Inventory, Inbound, and Outbound Transactions (7 of 7)

Category / Banner	Task	Menu #	Transaction Name	.NET Menu Name (Menu #, Program)	Description	Exclusions and Limitations
Outbound	Outbound	7.1.20	Shipper Labels	Trans Shipper Labels App: NA	Print/Reprint all or specific label groups for a shipper or specific License Plate.	A sample label
Outbound	Outbound	7.1.21	Shipper Item Label	Trans: Customer Item Label App: NA	Print/Reprint shipper item labels.	A sample label
Outbound	Outbound	7.1.22	License Plate Label	Trans: License Plate Label App: NA	Print/Reprint License Plate labels.	A sample label

ERP Production Transactions

The following ERP Production transactions are provided in the Production Orders 2.0 module:

Table 2
ERP Production Transactions (1 of 3)

Category / Banner	Task	Menu #	Transaction Name	.NET Menu Name (Menu #, Program)	Description	Exclusions and Limitations
Production	Production	5.1.1	Material Request	Trans: Production Order Replenishment Request App: Inventory Transfer (3.4.3, iclotr03.p)	Create a line side material request for a resource location where consumption / backflush will occur.	
Production	Production	5.1.3	Material Pick-Transfer-Issue	Trans: Production Order Pick-Transfer-Issue App: Several linked transactions called: <ul style="list-style-type: none"> • Pack Split (3.17.16, papasp.p) • Pack Remove (3.17.15, paparm.p) • Pack Build (3.17.3, papabd.p) • Pack Merge (3.17.15, papamg.p) • Pack Create by Pack Code (3.17.2, papacr01.p) • Production Order Manual Allocation (16.5.2, womall.p) • Production Order Picklist Pick by Item (16.5.7, wopkpp.p) • Production Order Picklist Pick by Pack (16.5.7, wopkpp.p) • Production Order Picklist Transfer (16.5.9, wopkis.p) • Production Order Picklist Issue by Item (16.5.11, woispck.p) • Production Order Picklist Issue by Pack (16.5.11, woispck.p) • Production Order Component Issue by Pack (16.5.12, woisord.p) • Production Order Component Issue by Item (16.5.12, woisord.p) • Kanban Consume/Fill (17.6.1, kbtr1.p) • Inventory Transfer (3.4.3, iclotr03.p) • Pack Transfer (3.17.8, papatr02.p) 	<p>Replenish work centers with component requirements driven by several replenishment signals:</p> <ul style="list-style-type: none"> • Manual Line Side replenishment request • Scheduled production orders generating component replenishment by work center backflush locations • Production Order Picklists • Kanban fill requests <p>Picking materials which are loose or packaged units.</p> <p>Picking and kitting materials by production order.</p> <p>Transferring those materials to holding, reserved, or backflush locations.</p>	

Table 2
ERP Production Transactions (2 of 3)

Category / Banner	Task	Menu #	Transaction Name	.NET Menu Name (Menu #, Program)	Description	Exclusions and Limitations
Production	Production	5.1.4	Material Transfer	Trans: Production Order Transfer Parent App: Calls linked transactions <ul style="list-style-type: none"> • Production Order Manual Allocation (16.5.2, womall.p) • Production Order Picklist Transfer (16.5.9, wopkis.p) • Inventory Transfer (3.4.3, iclotr03.p) • Pack Transfer (3.17.8, papatr02.p) • Pack Decommission (3.17.6, papadecm.p) 	Transfer kitted production order or picklist picked materials to production line or work center location.	
Production	Production	5.1.5	Material Issue	Trans: Production Order Parent Component Issue App: Calls linked transactions <ul style="list-style-type: none"> • Production Order Picklist Issue by Item (16.5.11, woispck.p) • Production Order Picklist Issue by Pack (16.5.11, woispck.p) • Production Order Component Issue (16.5.11, woispck.p) 	Issue components to production orders directly or through a picklist.	Can not issue by Pack.
Production	Production	5.1.6	Packaging	Trans: Production Order Packaging Parent App: Calls linked transactions <ul style="list-style-type: none"> • Pack Create by Production Order 16.5.17, pawocr.p • Pack Create by Production Line (16.5.18, palncr.p) • Pack Build (3.17.3, papabd.p) 	Create packaging IDs for scheduled and discrete production orders. Add items (Pack Build) to existing package ID.	
Production	Production	5.1.7	Production Receipts	Trans: Production Orders Reporting - Parent App: Calls linked transactions <ul style="list-style-type: none"> • Operation Activity Reporting • Kanban Consume/Post 	Report production for an operation or final receipt into stock and receiving serial/lot/item into a pack for discrete and scheduled production orders.	

Table 2
ERP Production Transactions (3 of 3)

Category / Banner	Task	Menu #	Transaction Name	.NET Menu Name (Menu #, Program)	Description	Exclusions and Limitations
Production	Production	5.1.7-1	Linked	Trans: Operation Activity Reporting - Production Only App: Operation Activity Reporting (16.13.13, woopact.p)	Report production for an operation or final receipt into stock and receiving serial/lot/item into a pack for discrete and scheduled production orders.	
Production	Production	5.1.7-2	Linked	Trans: Kanban Consume/Post App: Kanban Consume-Post (17.6.1, kbtr1.p)	Consume/Post against a Kanban ID.	
Production	Production	5.1.9	Material Putaway	Trans: Production Order Item Putaway App: Transfer Single Item (3.4.3, iclotr03.p)	Directs material handlers where to put away produced materials. Note: Requires implementation services to refine/develop putaway rules/logic. The putaway logic provided with this transaction is not supported and is used for reference only.	
Production	Production	5.1.4	Material Transfer	Trans: Production Order Transfer Parent App: Calls linked transactions <ul style="list-style-type: none"> • Production Order Manual Allocation (16.5.2, womall.p) • Production Order Picklist Transfer (16.5.9, wopkis.p) • Inventory Transfer (3.4.3, iclotr03.p) • Pack Transfer (3.17.8, papatr02.p) • Pack Decommission (3.17.6, papadecm.p) 	Transfer kitted production order or picklist picked materials to production line or work center location.	

EAM Transactions

The following EAM transactions are included in the EAM 2017.1EE module:

Table 3
EAM Transactions (1 of 2)

Category / Banner	Task	Menu #	Transaction Name	.NET Menu Name (Menu #, Program)	Description	Exclusions and Limitations
EAM Inventory	Inventory Transfer	2.1.1.1	Relocate	Trans: Inventory Transfer App: Inventory browse Relocate action	Transfer an item between locations.	
EAM Inventory	Inventory Transfer	2.1.1.20	Part Lookup	Trans: Inventory search App: Inventory browse Find Field	Search for a part record.	
EAM Inventory	Inventory Transfer	2.1.1.30	Part Labels	Trans: EAM Part Labels	Print labels for an item that contains item information.	
EAM Inventory	Inventory Transfer	2.1.1.31	Location Labels	Trans: Bin Labels	Print labels for an item that contains location information.	
EAM Inventory	Cycle Count	2.1.5.1	Adjust	Trans: Adjust App: Inventory browse Inventory Action	Adjust on hand quantity for a part location.	
EAM Inventory	Physical	2.1.7.1	Count Physical Inventory	Trans: Count Physical Inventory App: Inventory Physical Inventory	Record count for a part and its location.	
EAM Inbound	Purchase Requisitions	2.2.1.1	PO Receipt	Trans: PO Receipt App: Purchase Order browse Receive Action	Receive items against a purchase order.	
EAM Stores Requisitions	Stores Requisitions	2.3.2	Close Stores Requisition	Trans: Close Stores Requisition App: Inventory Stores Requisition Change Status Action	Change Stores Requisition status.	
EAM Stores Requisitions	Stores Requisitions	2.3.3	Part Lookup	Trans: Inventory lookup App: Inventory Stores Requisition Second browse New Part Lookup	Look up a part to include on a Stores Requisition List.	
EAM Maintenance	Maintenance Reporting	2.5.1.1	Issue to WO	Trans: Issue to WO App: Inventory Browse Issue Action Enter work order number	Issue a part to a work order.	
EAM Maintenance	Maintenance Reporting	2.5.1.2	Issue to Equipment	Trans: Issue to Equipment App: Inventory Browse Issue Action Enter equipment number	Issue a part to a piece of equipment.	

Table 3
EAM Transactions (2 of 2)

Category / Banner	Task	Menu #	Transaction Name	.NET Menu Name (Menu #, Program)	Description	Exclusions and Limitations
EAM Maintenance	Maintenance Reporting	2.5.1.4	Issue to Account	Trans: Issue to Account App: Inventory Browse Issue Action Enter cc/acct/sub account number	Issue a part to a Cost Center/Account/Sub Account.	
EAM Maintenance	Maintenance Reporting	2.5.1.5	Return Material	Trans: Return App: Inventory Browse Return Action	Return a part to Inventory.	

