



QAD Enterprise Applications
Enterprise Edition

Install Guide QAD Production Orders

Introduction
Production Orders Installation
Package Contents

This document contains proprietary information that is protected by copyright and other intellectual property laws. No part of this document may be reproduced, translated, or modified without the prior written consent of QAD Inc. The information contained in this document is subject to change without notice.

QAD Inc. provides this material as is and makes no warranty of any kind, expressed or implied, including, but not limited to, the implied warranties of merchantability and fitness for a particular purpose. QAD Inc. shall not be liable for errors contained herein or for incidental or consequential damages (including lost profits) in connection with the furnishing, performance, or use of this material whether based on warranty, contract, or other legal theory.

This document contains trademarks owned by QAD Inc. and other companies.

Copyright © 2018 by QAD Inc.

ProductionOrders_IG_v2_0_May2018.pdf/crl

QAD Inc.

100 Innovation Place
Santa Barbara, California 93108
Phone (805) 566-6000
<http://www.qad.com>

Contents

Production Orders Install Guide Change Summary	iii
Chapter 1 Introduction	1
Production Orders Installation	2
Production Orders Requirements	2
Production Orders Installation Package	3
Patches and Customized Programs	3
Chapter 2 Production Orders Installation	5
Overview	6
Production Orders Pre-Installation Tasks	6
Production Orders Installation Procedure	6
Download the Installation Package (On-Premise Servers)	6
Installing Production Orders and the Workbenches Using YAB	6
Installing Hotfix Package for Production Orders 2.0	8
Installing SAQ with Production Orders	8
Installing Data Collection Transactions for Production Orders	8
Installing E-Signature Data	9
Installing Production Order-Related Process Maps	9
Conversion	9
Patches and Customized Programs	10
TAM	10
Installation Verification	11
Appendix A Package Contents	15
Package Contents	16
Product Information Resources	71

Production Orders Install Guide Change Summary

The following table summarizes significant differences between this document and previous versions.

Date/Version	Description	Reference
May 2018 Production Orders Version 2.0	Added information about installing a hotfix package for Production Orders 2.0	page 2 page 8
	Added information about installing process maps	page 9
	Added information for a hotfix package to install with Serialization, Item Attributes, and Quality Control (SAQ) 2.7.1.	page 2 page 8
March 2018 Production Orders Version 2.0	Rebranded for version 2.0. Added new package content.	-- page 16
	Updated prerequisites for this package.	page 2
	Removed QDoc installation procedures.	page 6
	Added Automation Solutions: Data Collection transaction installation information.	page 8
	Added E-Signature installation information.	page 9
	Updated conversion information.	page 9
	Updated customizations to include TAM information.	page 10
	Updated verification with new program screens.	page 11
	Updated description for Customizations to include both customizations and patches.	page 10
October 2017, Production Orders Version 1.2	Rebranded for version 1.2; updated version of the QAD Planning and Scheduling Workbenches. Added new package content	--
July 2017, Production Orders Version 1.1.1	Rebranded for version 1.1.1, changing file names and package content for version 1.1.1	--
July 2017, Production Orders Version 1.1.	Rebranded for version 1.1	--
	All file names were changed to reflect the correct versions for version 1.1	--
	Some QDoc installation procedures were removed; the single procedure remaining now reflects standard QDocs	--
	Contents in Appendix were updated to reflect version 1.1 contents	--
April 2017, Production Orders Version 1.0.0. Early Adopter	This is the first version of this guide.	--

Introduction

This chapter discusses Production Orders installation topics.

Important Production Order functionality replaces and obsoletes functions and programs in QAD ERP. Once you install Production Orders, you cannot uninstall and return the replaced/obsoleted functions and programs. For a list of functions/programs that were replaced, removed, or moved, refer to the Introduction chapter of the *QAD Production Orders User Guide*, version 2.0.

Production Orders Installation 2

Describes system and software prerequisites you must meet before installing Production Orders and the package contents.

Production Orders Requirements 2

Describes the software and environment and other requirements for Production Orders installation.

Production Orders Installation Package 3

Lists the production orders package contents.

Patches and Customized Programs 3

Introduction to handling customizations.

Production Orders Installation

This section discusses Production Orders installation requirements, the installation package, and pre-installation preparations.

Production Orders Requirements

The following sections describe the software and environment and other requirements for Production Orders installation.

Software and Environment

You must have the following software and environment to install Production Orders software:

- 2016 or 2017 Enterprise Edition
- .NET UI 2.9.5 + CP2 (Cumulative Patch #2)
- Java Runtime Environment (JRE) 1.6 or above
- Progress 10.2B06 and above
- YAB: YAB 1.6.4.9 is the minimum version required.
- QAD Planning and Scheduling Workbenches, plug-in version 4.1 is included within the On-Premise Production Order package.

Note The Planning and Scheduling Workbenches package installs when you install the Production Order package; see “Production Orders Installation Procedure” on page 6.

- Serialization, Item Attributes, and Quality Control (SAQ), version 2.7.1

Production Orders version 2.0 depends on SAQ 2.7.1. Refer to your SAQ 2.7.1 installation documentation.

Important When you install SAQ 2.7.1 with Production Orders 2.0, you must:

- a Install the following hotfix package:

<https://knowledgebase.qad.com/kmp/article/AB-15182/0/Production-Order-2.0-and-SAQ-2.7.1-Overlapping-Files.html>

- b Update the `configuration.properties` file. (Refer to “Installing SAQ with Production Orders” on page 8.)
- QAD E-Signature
 - Enterprise Asset Management (EAM)

Note You must also install E-Signature seed data for use with Production Orders 2.0. Refer to “Installing E-Signature Data” on page 9.

For customers on 2016 EE, the EAM minimum version required is 13.3. This is a prerequisite for 2016 EE Cloud customers even when they do not actively use EAM. EAM automatically installs with 2016 EE on the Cloud, and Production Orders 2.0 requires a minimum version to exist in the environment. Customers using 2017 EE already have the correct EAM version available.

On-Premise installations do not include EAM; therefore, if you previously installed EAM, you must ensure that you have version 13.3 at a minimum.

- Data Collections

To use the Data Collection transactions that optionally install with Production Orders, you must have a minimum version 2.1.0 of the Automation Solutions: Data Collections framework installed.

- The following hotfix package must be installed with Production Orders 2.0:

<https://knowledgebase.qad.com/kmp/article/AB-15143/519/Hot-Fixes-for-Production-Orders-2.0.html>

Unzip Utilities

QAD's Store (<http://store.qad.com>) provides product downloads as .7z format. The .7z format is used to overcome a limitation that prevents the creation of a .zip file larger than 2 GB.

To unzip .7z files, use the free 7-Zip utility. Windows, Linux, and UNIX versions of this utility are available from:

<http://www.7-zip.org>

Unzipping the compressed product file using the appropriate utility yields an uncompressed ISO.

Production Orders Installation Package

QAD provides the following Production Orders installation components:

- Installation configuration settings
- Production Orders package
- E-Signature seed data; see “Installing E-Signature Data” on page 9.
- QAD Planning and Scheduling Workbenches, version 4.1; see Production Orders Installation Procedure.
- Optionally installed software in the package:
 - QAD Automation Solutions: Data Collection transactions; see Installing Data Collection Transactions for Production Orders

Appendix A lists the Production Order package contents for this version.

Patches and Customized Programs

The installation package contains modifications to the existing QAD ERP programs; therefore, if you have applied QAD patches or customizations, it is your responsibility to review, and when needed, merge the QAD patch changes, customizations, and any other changes after applying the installation package. QAD does not support customized programs.

Refer to “Package Contents” on page 16 for a list of program files loaded during installation.

4 QAD Production Orders Installation Guide

Production Orders Installation

This chapter describes QAD Production Orders package installation and post-installation configuration.

Production Orders Pre-Installation Tasks 6

Describes steps to perform before the actual installation.

Production Orders Installation Procedure 6

Provides step-by-step instructions for installing both Production Orders and the QAD Planning and Scheduling Workbenches using YAB.

Installing SAQ with Production Orders 8

Provides instructions for when you install Serialization, Item Attributes, and Quality Control (SAQ) with Production Orders.

Installing Data Collection Transactions for Production Orders 8

Provides instructions for when you install Automation Solutions: Data Collection transactions with Production Orders.

Installing E-Signature Data 9

Provides instructions for when you install QAD E-Signature seed data for use with Production Orders 2.0.

Installing Production Order-Related Process Maps 9

Provides instructions through QAD Knowledgebase articles to install process maps for use with Production Orders.

Conversion 9

Provides step-by-step instructions to run a conversion program to ready database records for use with the new Production Orders functionality.

Patches and Customized Programs 10

Tells you what to do with customized programs when installing the Production Orders package.

Installation Verification 11

Provides a method to verify successful installation.

Overview

The following sections describe how to install the Production Orders package and how to configure the product after installation. You install Production Orders using YAB.

Important Production Orders functionality replaces and obsoletes functions and programs in QAD ERP. Once you install Production Orders, you cannot uninstall and return the replaced/obsoleted functions and programs. For a list of functions/programs that were replaced, removed, or moved, refer to the Introduction chapter of the *QAD Production Orders User Guide*, version 2.0.

Production Orders Pre-Installation Tasks

Perform these steps before the actual YAB installation:

- 1 Choose one of the following:
 - a Back up your databases and supporting environments. To back up all databases, execute the command:

```
yab database-backup
```
 - b Back up a specific database by executing the command:

```
yab database-[INSTANCE]-backup
```

Note Be sure to include the compile database (cpldb.db) in your backup.

Production Orders Installation Procedure

The following section describes the installation. Downloading the installation package depends upon your environment:

- On-Premise servers: You download the package first.
- Cloud: The installation process retrieves the package from the Cloud Catalog. No extraction is necessary.

Download the Installation Package (On-Premise Servers)

The Production Orders package contains all applicable components for Production Orders, including packages for YAB.

To download the Production Orders installation package, download the add-on .zip file from the QAD Store.

Example `productionorder-image-2.0.0.1.zip`

Installing Production Orders and the Workbenches Using YAB

YAB is a configuration management tool you can use to start, stop, reconfigure, and maintain the consistency of your Enterprise Edition environments. Your environment is defined in terms of discrete units, or packages, which you can replace and add as needed. Refer to *QAD Enterprise Edition Installation Guide* for more information about using YAB.

When you run YAB, the process installs Production Orders and the Production Orders-compliant versions of the QAD Planning and Scheduling Workbenches packages.

Follow these steps to install Production Orders using YAB:

- 1 Change to the directory where EE is installed:
`cd <directory>`
- 2 Choose one of the following:
 - a If you are an on-premise user, go on to step 5 on page 7.
 - b If you are a Cloud user, go on to step 3 on page 7.
- 3 For Cloud, update the `configuration.properties` file:
 - a Locate the `configuration.properties` file in the `build/config` directory (from the directory where EE is installed (see step 1 on page 7)).
 - b Open the file.
 - c Create a reference to the Production Orders Package.

Note You must also create a reference to the QAD Planning and Scheduling Workbenches package that you install along with the Production Orders package, and add the lines as shown in the example below.

Example Create the following reference in the file for both Production Orders and the Workbenches (MSWPSW):

```

#--Production Orders--#
packages.productionorder=2.0.x.x
packages.netui-module-mswpsw=4.1

```

- 4 For Cloud, perform the following steps:
 - a Update the process-ignore file to skip a process:
 Locate the process-ignore file in the `/build/config/etc` directory.
 Open the file.
 Add a reference to the `metadata-productionorder-update` process at the end of the file.
 - b Update the environment with the following command:
`yab update -r`

When you list the package versions of both the Production Order and the Planning and Scheduling Workbenches in the `configuration.properties` file, both products install.

- 5 For On-Premise, first download the zip package from the QAD site, then perform the following steps:
 - a Update the environment with the following command:
`yab install /dr01/installs/productionorder-image-2.0.0.1.zip -install-update:false`
 - b Next, update the process-ignore file to skip a process:

8 QAD Production Orders Installation Guide

Locate the process-ignore file in the `/build/config/etc` directory.

Open the file.

Add a reference to the `metadata-productionorder-update` process at the end of the file.

c Next, type the following:

```
yab update -r
```

Both the Production Orders and the Planning and Scheduling Workbenches install.

Installing Hotfix Package for Production Orders 2.0

When you finish installing Production Orders 2.0, you must also install a hotfix package for the 2.0 version of Production Orders.

You can find the hotfix package at the following URL:

<https://knowledgebase.qad.com/kmp/article/AB-15143/519/Hot-Fixes-for-Production-Orders-2.0.html>

Installing SAQ with Production Orders

Productions Orders 2.0 uses QAD SAQ 2.7.1 programs. To install SAQ 2.7.1, refer to SAQ installation documentation for this product and version. The SAQ installation documentation may include additional hotfix requirements or information.

In addition to installing SAQ 2.7.1, you must also:

1 Install a hotfix package for SAQ to run with Production Orders 2.0.

Refer to the following URL for instructions to load the hotfix:

<https://knowledgebase.qad.com/kmp/article/AB-15182/0/Production-Order-2.0-and-SAQ-2.7.1-Overlapping-Files.html>

2 Update the `configuration.properties` file for SAQ 2.7.1 by adding the following lines for an unencrypted package:

```
# @append@  
netui-pro-content.netui-module-saq-2017-unencrypted.excludes=  
com/qad/shell/report/reports/QAD_WorkOrderReleasePrint.p
```

Note For an encrypted package, change `-unencrypted` to `-encrypted`.

Installing Data Collection Transactions for Production Orders

You can optionally install the QAD Automation Solutions: Data Collection menus and transactions for Production Orders. Only customers that use the Data Collections module should install the transactions and menus.

Use the following Data Collections programs to load the transactions and menus:

- Transaction Definition Import/Export (6.23.4)

- Process Category Import/Export (6.23.1)

Use the following steps to import the Data Collections transaction and menus:

- 1 Run Transaction Definition Import/Export to import the new data collections transactions. The transactions are located at:

```
{appdir}/dist/as-setup/transactions/productionorder/
```

- 2 Run Process Category Import/Export to import the new data collections menus. The menus are located at:

```
{appdir}/dist/as-setup/menus/productionorder/
```

For further details on importing data see *QAD Automated Solutions: Data Collection Installation Guide*, version 3.0.

Installing E-Signature Data

You must install QAD E-Signature seed data for use with Production Orders 2.0. Seed data is mandatory data that must be loaded for a program—in this case, Production Orders 2.0—to work properly. You use the following E-Signature programs to load the seed data:

- E-Signature Workbench Refresh (36.12.14.4)
- E-Signature Workbench Profile Maint (36.12.14.5)
- E-Signature Profile Activation (36.12.14.8)

Use the following steps to install the E-Signature seed data:

- 1 Run E-Signature Workbench Refresh to bring the new seed data into the E-Signature Workbench Profile. The seed data are located at:

```
{appdir}/config/electronic-signature/productionorder/
```
- 2 Run E-Signature Workbench Profile Maintenance to choose your desired E-Signature settings for that category.
- 3 Run E-Signature Profile Activation to activate your new seed data.

Note You can only enter tomorrow as the earliest date to start using this new profile.

Installing Production Order-Related Process Maps

For information on installing process maps for use with Production Orders, refer to the following QAD knowledgebase article:

<https://knowledgebase.qad.com/kmp/article/AB-15692/519/How-to-load-Process-Maps-for-Production-Orders.html>

Conversion

Once you install Production Orders, you should run a conversion program, even when you installed previous versions of Production Orders.

The conversion program prepares database records for use with the new functionality. Use the following procedure to run the conversion program:

- 1 Open a Progress Editor session.
- 2 Start the conversion program by executing the following command:

```
run us/ut/utprdord.r
```

The conversion screen displays.
- 3 Set the Run Production Order Conversions field to Yes and start the conversion process.
The Report Name field generates a report file name automatically. The system places the file in `build/work/client` where EE is installed. The report file shows statistics by domain of the record types that the system processed in the conversion.

Sample output from the conversion is as follows:

```
Domain:10USA,Table:lad_det,Count:0,Processed:0,Deleted:0
Domain:10USA,Table:mrp_det,Count:0,Processed:0,Deleted:0
Domain:10USA,Table:op_hist,Count:13488,Processed:1316,Deleted:0
Domain:10USA,Table:pt_mstr,Count:350,Processed:21,Deleted:0
Domain:10USA,Table:ptp_det,Count:24,Processed:0,Deleted:0
Domain:10USA,Table:rps_mstr,Count:110,Processed:110,Deleted:110
Domain:10USA,Table:wo_mstr,Count:5017,Processed:5017,Deleted:0
Domain:11CAN,Table:lad_det,Count:0,Processed:0,Deleted:0
Domain:11CAN,Table:mrp_det,Count:0,Processed:0,Deleted:0
Domain:11CAN,Table:op_hist,Count:12557,Processed:125,Deleted:0
```

Patches and Customized Programs

The installation package contains modifications to the existing QAD ERP programs; therefore, if you have applied QAD patches or customizations, it is your responsibility to review, and when needed, merge the QAD patch changes, customizations, and any other changes after applying the installation package. QAD does not support customized programs.

Refer to “Package Contents” on page 16 for a list of program files loaded during installation.

TAM

When TAM is installed in the environment, you must also install the Production Orders TAM integration files.

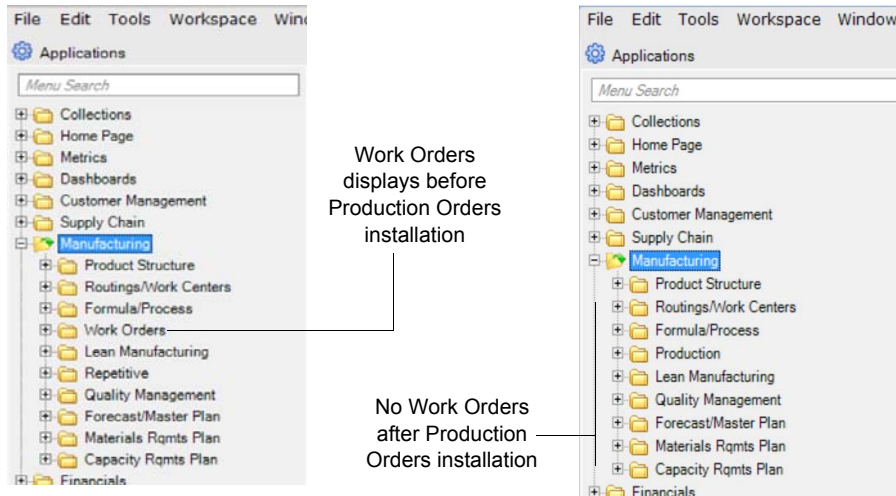
You install the TAM files manually. To do this, use the following procedure:

- 1 Copy the `2-0-with-tam2-1` directory:
From the Production Order directory: `etc/shared_files`
To the environment directory: `patches/mfg`
- 2 Add the new directory to the compile propath and compile the contents by running this command: `yab -r code-mfg-update`

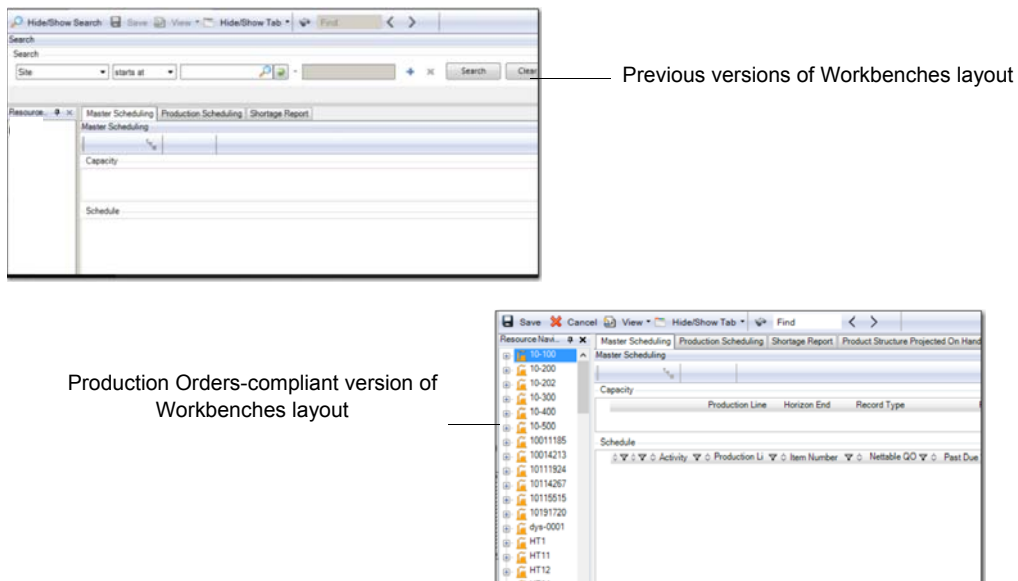
Installation Verification

You can verify that the Production Orders and the Planning and Scheduling Workbenches installed. Use this method to verify that the package has installed successfully.

- 1 In your EE environment, verify that the Manufacturing menu now has *Production* in the list and both *Work Orders* and *Repetitive* removed.



- 2 Check the layout of the Production Orders-compliant version of the Planning and Scheduling Workbenches. It is different from previous versions of the product.



- 3 Check for new Item Inventory Data Browse (1.6.6) and Item-Site Inventory Data Browse (1.6.7):

12 QAD Production Orders Installation Guide

The first screenshot shows the 'Item Inventory Data Browse' window. The table contains the following data:

Item Number	UM	Description	Serial Control	Lot Control	Site	Location	Location Type	Automatic Lot Numbers	Lot Group	ABC Class	Average Interval
01010	EA	Medical Ultrasound	Never	S	10100	010		No	F100010124	A	9
01011	EA	Supplies Kit	Never		10100	010		No		C	9
01012	BC	Stetho Probe Covers, 20	Never	L	10100	010		No		C	9
01013	BC	Stetho Vripts, Box of 50	Never	L	10100	010		No		C	9
01020	EA	Implantable Ultra Rev. A	Never	S	10100	010		No	F200000244	A	9
01021	EA	Surgical Kit	Never	S	10100	010		No		C	9
01030	EA	Consumer Ultrasound	Never	S	10100	010		No	F300000112	A	9
01040	EA	Industrial Ultrasound	Never	S	10100	010		No	F400000469	A	9
01040-001	EA	Industrial Ultrasound TO	Never	S	10100	010		No	F400000469	A	9
01040-002	EA	Industrial Ultrasound TO	Never	S	10100	010		No	F400000469	A	9
01040-003	EA	Industrial Ultrasound FR	Never	S	10100	010		No	F400000469	A	9
01040-004	EA	Industrial Ultrasound TO	Never	S	10100	010		No	F400000469	A	9
01040-005	EA	Industrial Ultrasound TO	Never	S	10100	010		No	F400000469	A	9

The second screenshot shows the 'Item-Site Inventory Data Browse' window. The table contains the following data:

Item Number	Description	Site	UM	ABC Class	Serial Control	Lot Control	Location	Location Type	Automatic Lot Numbers	Average Interval
01011	Supplies Kit	10100	EA	A	Never		010		No	90
01012	Stetho Probe Covers, 20	10100	BC	A	Never	L	010		No	90
01013	Stetho Vripts, Box of 50	10100	BC	B	Never	L	010		No	90
01020	Implantable Ultra Rev. A	10100	EA	A	Never	S	010		No	90
01021	Surgical Kit	10100	EA	A	Never		010		No	90
01030	Consumer Ultrasound	10100	EA	B	Never	S	010		No	90
01040	Industrial Ultrasound	10100	EA	B	Never	S	010		No	90
01040-001	Industrial Ultrasound TO	10100	EA	B	Never	S	010		No	90
01040-002	Industrial Ultrasound TO	10100	EA	B	Never	S	010		No	90

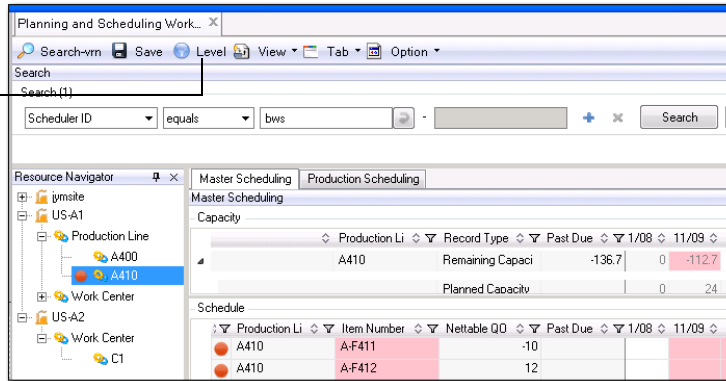
- Verify that the new Co-/By-Product Production Order Browse (16.3.19) exists. This browse is new for version 2.0:

The screenshot shows the 'Co-/By-Product Production Order Browse' window. The table contains the following data:

Production Order	ID	Site	Production Line	Item Number	Description	Co/By Type	Qty To Start	Actual Qty Completed	Actual Qty Scrapped	UM	Due Date	Status
0908-pr1	2457388	10-100	0908-base-process			P	90.0	0.0	0.0	EA	9/8/2017	A
0908-pr1	2457400	10-100	0908-by-prod			B	90.0	0.0	0.0	EA	9/8/2017	A
0908-pr1	2457401	10-100	0908-co-prod			C	90.0	0.0	0.0	EA	9/8/2017	A
0908-pr1	2458585	10-100	0823-prod			C	0.0	0.0	0.0	EA	9/8/2017	A
0908-pr1	2458586	10-100	0802-prod			C	0.0	0.0	0.0	EA	9/8/2017	A
10012	2460579	mts1e1	mt13	MT13	MT11 coby base item	P	10.0	5.0	0.0	EA	9/26/2017	R
10012	2460580	mts1e1	mt13	MT13by1	MT11 by products 1	B	30.0	15.0	0.0	EA	9/26/2017	R
10012	2460581	mts1e1	mt13	MT13co1	MT10 co products 1	C	10.0	3.0	0.0	EA	9/26/2017	R
10012	2460582	mts1e1	mt13	MT13co2	MT10 co products 1	C	20.0	16.0	0.0	EA	9/26/2017	R
10018	2460618	mts1e1	mt13	MT13	MT11 coby base item	P	10.0	1.0	0.0	EA	9/27/2017	R
10018	2460619	mts1e1	mt13	MT13by1	MT11 by products 1	B	30.0	3.0	0.0	EA	9/27/2017	R
10018	2460620	mts1e1	mt13	MT13co1	MT10 co products 1	C	10.0	1.0	0.0	EA	9/27/2017	R
10018	2460621	mts1e1	mt13	MT13co2	MT10 co products 1	C	20.0	2.0	0.0	EA	9/27/2017	R
10023	2460671	ygssite1	1000	ygsc01		C	10.0	1.0	0.0	EA	9/27/2017	C
10023	2460672	ygssite1	1000	ygscbase2		P	10.0	3.0	2.0	EA	9/27/2017	C
10023	2460673	ygssite1	1000	ygscby1		B	150.0	65.0	6.0	PL	9/27/2017	C
10023	2460674	ygssite1	1000	ygsc02		C	2.0	0.2	0.0	BX	9/27/2017	C
10031	2460687	mts1e1	mt14	mt14	MT11 coby base item	P	10.0	5.0	0.0	EA	9/27/2017	R

- In your EE environment, start the QAD Planning and Scheduling Workbenches, version 4.1, which installed with the 2.0 Package. Check for a new Level button:

New Level button in version 4.1



Package Contents

This appendix includes the contents of the Production Order package, version 2.0.

***Package Contents* 16**

Lists contents of the Production Order package.

Package Contents

```

.
|-- productionorder.version
|-- qad.productionorder
|   |-- aliaslist
|   |   |-- aliaslist.dat
|   |-- as-setup
|   |   |-- menus
|   |   |   |-- productionorder
|   |   |       |-- Demo.xml
|   |   |       |-- Production-Orders.xml
|   |   |-- transactions
|   |       |-- productionorder
|   |           |-- Inventory-Transfer-with-Lot-Serial-Change---Item.xml
|   |           |-- Kanban-Consume-Post.xml
|   |           |-- Label-Print-by-Serial-ID.xml
|   |           |-- Line-Replenishment-Deliver.xml
|   |           |-- Operation-Activity-Reporting---Labor-Only.xml
|   |           |-- Operation-Activity-Reporting---Production-Only--
|   |               SubCon-Link.xml
|   |           |-- Operation-Activity-Reporting---Production-Only.xml
|   |           |-- Pack-Build---Standalone.xml
|   |           |-- Pack-Build.xml
|   |           |-- Pack-Create-By-Production-Order---Standalone.xml
|   |           |-- Pack-Create-by-Pack-Code---Standalone.xml
|   |           |-- Pack-Create-by-Production-Line.xml
|   |           |-- Pack-Create-by-Production-Order.xml
|   |           |-- Pack-Decommission---Standalone.xml
|   |           |-- Pack-Decommission.xml
|   |           |-- Pack-Remove-Standalone.xml
|   |           |-- Pack-Split---Standalone.xml
|   |           |-- Pack-Transfer---Standalone.xml
|   |           |-- Prod-Order-Manual-Allocation---Standalone.xml
|   |           |-- Prod-Order-Manual-Allocation.xml

```

```

| | | -- Production-Order-Component-Issue-by-Item---
| | | Standalone.xml
| | | -- Production-Order-Component-Issue-by-Item.xml
| | | -- Production-Order-Component-Issue-by-Pack---
| | | Standalone.xml
| | | -- Production-Order-Component-Issue-by-Pack.xml
| | | -- Production-Order-Item-Putaway.xml
| | | -- Production-Order-Line-Side-Replenishment-Request.xml
| | | -- Production-Order-Packaging-Parent.xml
| | | -- Production-Order-Parent-Component-Issue---SubCon-
| | | Linked.xml
| | | -- Production-Order-Parent-Component-Issue.xml
| | | -- Production-Order-Pick-Transfer-Issue.xml
| | | -- Production-Order-Picklist-Issue---Standalone.xml
| | | -- Production-Order-Picklist-Issue.xml
| | | -- Production-Order-Replenishment-Request.xml
| | | -- Production-Order-Transfer-Parent.xml
| | | -- Production-Orders-Reporting---Parent.xml
| | | -- Production-Picklist-Pick-by-Item---Standalone.xml
| | | -- Production-Picklist-Pick-by-Item.xml
| | | -- Production-Picklist-Pick-by-Pack---Standalone.xml
| | | -- Production-Picklist-Pick-by-Pack.xml
| | | -- Production-Picklist-Transfer---Standalone.xml
| | | -- Production-Picklist-Transfer.xml
| | | `-- Purchase-Order-Receipts-with-SubContract-
| | | Reporting.xml
| | -- bin
| | `-- productionorder.pl
| | -- browse-collection
| | | -- 01199c7b-b374-45fd-bc58-4548839fc367.bc.xml
| | | -- 018da3dd-264e-443b-b844-f00e6b60a7d7.bc.xml
| | | -- 0b8e9872-bfcc-487c-8d7a-b49ace683ced.bc.xml
| | | -- 16bc21b9-8e8b-4547-840e-987bd52e1744.bc.xml
| | | -- 1afd02a6-357b-434f-a80d-c78f32ef40a2.bc.xml

```

| | |-- 210cc806-a72e-4c4b-a30b-7457c3b745af.bc.xml
| | |-- 221e54fc-53ba-47f0-93c0-420a31a11d9d.bc.xml
| | |-- 2e54e023-bae4-46af-96e6-9b612628ca21.bc.xml
| | |-- 382c6e17-6440-4234-a899-35ef7f18ee94.bc.xml
| | |-- 38d7f042-87e3-46e7-b1cd-5128c79e51fd.bc.xml
| | |-- 3edc53a6-9ab5-48dc-adff-813d7a9ee648.bc.xml
| | |-- 3ef04e87-ffe4-4609-829e-442e38c77338.bc.xml
| | |-- 46dd19c8-26d8-4567-a330-91c76ddbefc.bc.xml
| | |-- 4a53c1dc-80ad-4986-8ee4-e97d337670f6.bc.xml
| | |-- 4a53c636-a0e1-4ee0-9fce-b61f222dfe3e.bc.xml
| | |-- 5d6763fa-8eb2-4b57-aa9a-a2b85e03efed.bc.xml
| | |-- 5e0facb9-cde2-4d36-9ab2-375c59829c2c.bc.xml
| | |-- 5ebeeee41-eb11-4b4d-8cf5-d3c8c8934ee4.bc.xml
| | |-- 6151dd31-8b91-4f38-b3a2-0947aa99a344.bc.xml
| | |-- 6a42e92d-c48b-45b8-b969-3c7253c61d9b.bc.xml
| | |-- 71145718-0f21-470c-b165-ed5f40eb8ffa.bc.xml
| | |-- 7d2e9928-0202-4ce1-8aa7-cf3ae036eada.bc.xml
| | |-- 83131689-d06e-4033-b83a-c8e625e803ee.bc.xml
| | |-- 8442d5d7-33b6-4f04-adaf-b9913cf8b2ae.bc.xml
| | |-- 8a647dd1-6ed4-423e-93b4-e115e75bb6e0.bc.xml
| | |-- 8f659c2a-7e74-452d-82a7-6221b921d73f.bc.xml
| | |-- 943d77e2-420f-4028-a4b6-7931b2c96f51.bc.xml
| | |-- 9a272d72-f03c-49c6-a5cc-c0855b10d043.bc.xml
| | |-- 9f32cb92-9f5f-4a69-8275-c77b27f5387c.bc.xml
| | |-- b7dd12e2-10a6-4e37-b7be-d921b379cdc3.bc.xml
| | |-- be90423c-dc22-4437-9939-81ad2a0b0289.bc.xml
| | |-- c39adff4-1af2-42e9-aabb-231f461fe54c.bc.xml
| | |-- c6018a5d-8bbd-413c-98ba-5b1d17a405ab.bc.xml
| | |-- c7eb64f1-8109-44e7-9617-80dc9bffe432.bc.xml
| | |-- d776c62a-60b5-43a6-971b-0061d797c504.bc.xml
| | |-- d917a0e2-ecc1-4800-9350-cce0754594f5.bc.xml
| | |-- da8b0aaa-d705-4237-8509-cf2a49e65019.bc.xml
| | |-- e072186e-b875-4fbc-949a-eb69b874b426.bc.xml
| | |-- f870bff7-4587-4a58-ae18-3be3d1fa7f40.bc.xml

```

| |-- code
| |   |-- progress
| |     |-- mfg
| |       |-- branches
| |         |-- 2017
| |           |-- excludePrograms.lst
| |             |-- us
| |               |-- ca
| |                 |-- calotbr.i
| |                   |-- do
| |                     |-- dodsois1.p
| |                       |-- ed
| |                         |-- edimcipr.p
| |                           |-- edimsbpr.p
| |                             |-- fo
| |                               |-- fopsrp.p
| |                                 |-- fs
| |                                   |-- fscarmk1.p
| |                                     |-- fscarmtf.p
| |                                       |-- fscarmtk.p
| |                                         |-- fseoivtr.p
| |                                           |-- fseomta.p
| |                                             |-- fseorep.p
| |                                               |-- fsrmamtu.p
| |                                                 |-- gl
| |                                                   |-- glglxr.p
| |                                                     |-- gp
| |                                                       |-- gpcalxr.p
| |                                                         |-- gpmp.p
| |                                                           |-- gpmp02.p
| |                                                             |-- gpmpup.p
| |                                                               |-- gpmpupph.p
| |                                                                 |-- gpshpgen.p
| |                                                                   |-- ic

```



```

| | | | | |-- papatr03.p
| | | | | |-- papatrxr.p
| | | | | |-- paporvm.p
| | | | | |-- papoul.p
| | | | | |-- papoulxr.p
| | | | | |-- pashxr.p
| | | | | |-- pasopa02.p
| | | | | |-- pasopi02.p
| | | | | |-- pasopixr.p
| | | | | |-- pawocr.p
| | | | | `-- paworcxr.p
| | | | |-- pc
| | | | | |-- pccalcxr.p
| | | | | |-- pccalxr1.p
| | | | | |-- pccscal.p
| | | | | |-- pcinrpxr.p
| | | | | `-- pcucrpxr.p
| | | | |-- pi
| | | | | `-- pirp04.p
| | | | |-- po
| | | | | |-- popoit01.i
| | | | | |-- poporca.p
| | | | | |-- poporcb6.p
| | | | | |-- poporcc.p
| | | | | |-- poporcm.i
| | | | | |-- poporcm.p
| | | | | |-- popoxr1.p
| | | | | |-- porcxr.p
| | | | | |-- porcxr1.p
| | | | | |-- porvisa.p
| | | | | `-- porvism.p
| | | | |-- pp
| | | | | |-- ppitxr.p
| | | | | |-- ppplmt1.p

```

```

| | | | | -- ppplmta.p
| | | | | -- pppsmt02.p
| | | | | -- ppptiqb.p
| | | | | -- ppptmt05.p
| | | | | -- ppptmta.p
| | | | | `-- ppptrp07.p
| | | | | -- px
| | | | | `-- pxunref.p
| | | | | -- rc
| | | | | -- rcshwbb.p
| | | | | -- rcshwbc2.p
| | | | | -- rcsois1.p
| | | | | -- rcsois1a.p
| | | | | `-- rctrccp.p
| | | | | -- re
| | | | | -- recrtwo.p
| | | | | -- recwomt.p
| | | | | -- rercvlst.p
| | | | | -- resubis.p
| | | | | `-- rettwipx.i
| | | | | -- rs
| | | | | -- rsautorc.p
| | | | | -- rspomtb.p
| | | | | -- rsporc.p
| | | | | -- rsshmtb.p
| | | | | -- rssup.p
| | | | | -- rssupa.p
| | | | | `-- rssupa1.p
| | | | | -- rw
| | | | | `-- rwromt.p
| | | | | -- so
| | | | | -- socnaim2.p
| | | | | -- sosl01.p
| | | | | -- sosois.p

```



```

| | | | -- fsromt.p
| | | | -- fsrtvtrn.p
| | | | -- fstrans.p
| | | | -- fswipmtl.p
| | | | -- fswobom.p
| | | | -- fswoitm.p
| | | | `-- fsworte.p
| | | | -- gi
| | | | | -- giapexpa.p
| | | | | -- giapimpa.p
| | | | | -- giapimpc.p
| | | | | `-- giapimpd.p
| | | | -- gl
| | | | | -- glcorfrm.i
| | | | | `-- glglxr.p
| | | | -- gp
| | | | | -- gpapit.i
| | | | | -- gpapit.p
| | | | | -- gpcalds.i
| | | | | -- gpcalemt.p
| | | | | -- gpcalxr.p
| | | | | -- gpcmmt08.p
| | | | | -- gpglcoa.i
| | | | | -- gpimfcmt.p
| | | | | -- gpimfpo.i
| | | | | -- gpimfrel.i
| | | | | -- gpimfrel2.i
| | | | | -- gpimftbl.i
| | | | | -- gpistran.p
| | | | | -- gplngxr.p
| | | | | -- gpmp.p
| | | | | -- gpmp02.p
| | | | | -- gpmprqtt.i
| | | | | -- gpmpup.p

```

```
| | | | -- gpmpup04.p
| | | | -- gpmpupa.p
| | | | -- gpmpupb.p
| | | | -- gpmpupph.p
| | | | -- gpmpvar2.i
| | | | -- gpnbr.p
| | | | -- gpsct01.i
| | | | -- gpsct06.i
| | | | -- gpshpgen.p
| | | | -- gpumxr.p
| | | | -- gpworle.p
| | | | -- gpxpld.p
| | | | -- gpxpld01.i
| | | | `-- gpxpld02.i
| | | | -- ic
| | | | -- icagecn.p
| | | | -- icccaj.p
| | | | -- icccrpa.p
| | | | -- iccorver.i
| | | | -- icedit.i
| | | | -- icedit1.i
| | | | -- icedit2.i
| | | | -- icedit2.p
| | | | -- icedit6.p
| | | | -- icicpm.p
| | | | -- icieit01.i
| | | | -- icilxr.p
| | | | -- icintr.p
| | | | -- icintr01.p
| | | | -- icintr1.i
| | | | -- icinxr.p
| | | | -- icisdxr.p
| | | | -- icisrc01.p
| | | | -- icisrc02.p
```



```

| | | | -- mfwomta.i
| | | | -- mfworla.i
| | | | `-- mfworlc.i
| | | | -- mg
| | | | -- mgdlfhmt.p
| | | | -- mghstld.p
| | | | -- mgpmrp1.p
| | | | -- mgpmrp2a.p
| | | | -- mgpmrp3.p
| | | | -- mgpmrp3a.p
| | | | `-- mgrnrxr.p
| | | | -- mp
| | | | `-- mpsextlev.p
| | | | -- mr
| | | | -- mrgrup.p
| | | | -- mrllup.p
| | | | -- mrllup1a.p
| | | | -- mrmpiq.p
| | | | -- mrmpiq01.p
| | | | -- mrmpiq03.p
| | | | -- mrmprp01.p
| | | | -- mrmprp03.p
| | | | -- mrmprp11.p
| | | | -- mrmprp1a.p
| | | | -- mrmprp1b.p
| | | | -- mrmprple.p
| | | | -- mrmprp1f.p
| | | | -- mrmprp1g.p
| | | | -- mrmprp1h.i
| | | | -- mrmprp1i.p
| | | | -- mrmpup02.p
| | | | -- mrmpup03.p
| | | | -- mrmpupa.p
| | | | -- mrmpupc1.p

```

```
| | | | -- mrmpupe3.p
| | | | -- mrmrppm.p
| | | | -- mrpbex01.p
| | | | -- mrporp.p
| | | | -- mrppl.p
| | | | -- mrprap.p
| | | | -- mrupvars.i
| | | | -- mrwoap.p
| | | | `-- mrworpl1.p
| | | | -- ms
| | | | -- mscnstnt.i
| | | | -- msepei.p
| | | | -- msepei01.i
| | | | -- msepei02.i
| | | | -- msepeifx.p
| | | | -- msepeilv.p
| | | | -- msepeixr.p
| | | | -- msmps01.i
| | | | -- msmpsc2.p
| | | | -- msmpslog.i
| | | | -- msmps rpt.i
| | | | -- msmpsxr.p
| | | | -- msmsiq01.p
| | | | -- msmsrp.p
| | | | -- msmsrp01.p
| | | | -- msmsrp02.p
| | | | -- msmsrpa.p
| | | | -- mssmtxr.p
| | | | `-- mstimcal.i
| | | | -- pa
| | | | -- pa028.p
| | | | -- pa029.p
| | | | -- pa044.p
| | | | -- pa049.p
```



```

| | | | -- pc047.p
| | | | -- pc049.p
| | | | -- pccalcxr.p
| | | | -- pccalxr1.p
| | | | -- pccscal.p
| | | | -- pcinrpxr.p
| | | | -- pcptuadj.p
| | | | -- pcucrpxr.p
| | | | -- pcvefyxr.p
| | | | `-- pcworp3a.p
| | | | -- pi
| | | | `-- pirp04.p
| | | | -- po
| | | | -- podsrvs.i
| | | | -- popoiq01.p
| | | | -- popoit01.i
| | | | -- popomtd1.p
| | | | -- poporca.p
| | | | -- poporca5.p
| | | | -- poporcb.p
| | | | -- poporcb6.p
| | | | -- poporcb7.p
| | | | -- poporcc.p
| | | | -- poporcm.i
| | | | -- poporcm.p
| | | | -- popoxr1.p
| | | | -- porcabs.p
| | | | -- porcapi.p
| | | | -- porcrpwo.p
| | | | -- porcsbir.p
| | | | -- porcshpu.p
| | | | -- porcsshp.i
| | | | -- porcsshp.p
| | | | -- porcssup.p

```



```

| | | | -- ppptmta.p
| | | | -- ppptmta2.p
| | | | -- ppptmta3.i
| | | | -- ppptmta4.i
| | | | -- ppptmtb.p
| | | | -- ppptmtc.p
| | | | -- ppptmtp.i
| | | | -- ppptrp02.p
| | | | -- ppptrp06.p
| | | | -- ppptrp07.p
| | | | -- ppptrp12.p
| | | | -- ppptrp20.p
| | | | -- pppttpt.i
| | | | -- ppttisp.i
| | | | `-- ppttps01.i
| | | | -- px
| | | | `-- pxunref.p
| | | | -- qc
| | | | `-- qcwomt.p
| | | | -- rc
| | | | | -- rcshwbb.p
| | | | | -- rcshwbc2.p
| | | | | -- rcshwbc5.p
| | | | | -- rcsois1.p
| | | | | -- rcsois1a.p
| | | | | -- rcsoisj.p
| | | | | `-- rctrccp.p
| | | | -- re
| | | | | -- rebkfla.p
| | | | | -- rebkflde.p
| | | | | -- rebkflis.p
| | | | | -- rebkflnm.p
| | | | | -- receive.p
| | | | | -- receivef.p

```



```
| | | | -- wluiao.p
| | | | -- wluiar.p
| | | | -- wluibi.p
| | | | -- wluibo.p
| | | | -- wluibr.p
| | | | -- wluibs.p
| | | | -- wluidwm.p
| | | | -- wluiglwl.p
| | | | -- wluigpwl.p
| | | | -- wluiissi.p
| | | | -- wluiml.p
| | | | -- wluipri.p
| | | | -- wluipro.p
| | | | -- wluiiri.p
| | | | -- wluirwi.p
| | | | -- wluisfsi.p
| | | | -- wluisfso.p
| | | | -- wluisi.p
| | | | -- wluislr.p
| | | | -- wluiso.p
| | | | -- wluisr.p
| | | | `-- wluiwro.p
| | | | -- wo
| | | | -- wo052.p
| | | | -- woacct.i
| | | | -- woadjust.i
| | | | -- woadjust.p
| | | | -- woallwod.p
| | | | -- woapixr.p
| | | | -- woattrtt.i
| | | | -- wobfapi.p
| | | | -- wobffrm.i
| | | | -- wobfmv.i
| | | | -- wobkfl.i
```


				-- woscdisp.p
				-- woscds.i
				-- woscdshil.i
				-- woscdsm.i
				-- wosceifl.i
				-- wosceipl.p
				-- woscemdr.i
				-- woscemo.i
				-- woscemor.i
				-- wosceort.p
				-- woscerbd.i
				-- woscexf.i
				-- woscfst.p
				-- woschd.i
				-- woschdls.i
				-- woschxr.p
				-- woscismr.p
				-- wosclnd.i
				-- wosclndhil.i
				-- woscload.i
				-- wosclog.i
				-- wosclvlv.p
				-- woscmfgt.i
				-- woscmpsl.i
				-- woscmrp.i
				-- woscpl.i
				-- woscpl.p
				-- woscpm.p
				-- woscpostupdatex.p
				-- woscpreupdatex.p
				-- woscpswb.p
				-- woscpswu.p
				-- woscpt.i
				-- woscpthil.i

				-- woscwxad.p
				-- wosddtls.p
				-- woshapi.p
				-- woshmt.p
				-- woshmtb.p
				-- wostatcl.i
				-- wosumt01.p
				-- wosumt01f.p
				-- wotran.p
				-- wotrantt.i
				-- wotrord.i
				-- wotrtrt.i
				-- wottcarp.i
				-- wottcb.i
				-- wottcibpsh.i
				-- wottcish.i
				-- wottcomp.i
				-- wottcompbp.i
				-- wottissh.i
				-- wottlad.i
				-- wottord.i
				-- wottpk.i
				-- wottpkrp.i
				-- wottpsrp.i
				-- wottsh.i
				-- wottsp.i
				-- woupdbk.p
				-- woupdbkfl.p
				-- woupdiss.p
				-- woupdpk.p
				-- woupdser.i
				-- woupdser.p
				-- woupshtg.i
				-- woupshtg.p

				-- wowomta1.p
				-- wowomta2.p
				-- wowomta3.p
				-- wowomta4.p
				-- wowomta5.p
				-- wowomb.p
				-- wowomb1.p
				-- wowomtc.p
				-- wowomte.p
				-- wowomte1.p
				-- wowomtef.p
				-- wowomtf.p
				-- wowomtf1.p
				-- wowomtfa.p
				-- wowomtg.p
				-- wowomth.p
				-- wowomth1.p
				-- wowomti.p
				-- wowomtj.p
				-- wowopm.p
				-- woworca.p
				-- woworcaf.p
				-- woworcb.p
				-- woworcbf.p
				-- wowork.p
				-- woworla.p
				-- woworlc.p
				-- woworle.p
				-- woworle1.p
				-- woworle2.p
				-- woworlea.p
				-- woworp05.p
				-- woworp5a.p
				-- wowosp.p


```

| | | |-- fieldhlp-po.fhd
| | | `-- fieldhlp-tw.fhd
| | |-- progress
| | | |-- mapping
| | | | |-- qadadm
| | | | | |-- mapping-brw_mstr-brwt_det-brwf_det-proc_det-
| | | | | | prol_det.xml
| | | | | |-- mapping-drl_mstr.xml
| | | | | |-- mapping-edtrf_mstr.xml
| | | | | |-- mapping-lbl_mstr.xml
| | | | | |-- mapping-lbld_det.xml
| | | | | |-- mapping-mnds_det.xml
| | | | | |-- mapping-nonsys-edtrf_mstr.xml
| | | | | |-- mapping-pgmi_mstr.xml
| | | | | `-- mapping-vue_mstr-vwj_det-vuf_det.xml
| | | | `-- qaddb
| | | | | |-- mapping-AlgoM.xml
| | | | | |-- mapping-actf_mstr.xml
| | | | | |-- mapping-cd_det.xml
| | | | | |-- mapping-code_mstr.xml
| | | | | |-- mapping-cref_mstr.xml
| | | | | |-- mapping-ctg_mstr.xml
| | | | | |-- mapping-fldattr_mstr.xml
| | | | | |-- mapping-flh_mstr.xml
| | | | | |-- mapping-lngd_det.xml
| | | | | |-- mapping-lpm_mstr-lpmd_det.xml
| | | | | |-- mapping-mnd_det-mnt_det.xml
| | | | | |-- mapping-mnp_det.xml
| | | | | |-- mapping-msg_mstr.xml
| | | | | |-- mapping-nonsys-AlgoM.xml
| | | | | |-- mapping-nonsys-cd_det.xml
| | | | | |-- mapping-nonsys-code_mstr.xml
| | | | | |-- mapping-tzo_mstr-tzod_det.xml
| | | | | `-- mapping-url_mstr.xml

```

```

| | | `-- xml
| | |   |-- qadadm
| | |   | |-- browses.xml
| | |   | |-- deleted
| | |   | | |-- browses.xml
| | |   | | |-- drilldowns.xml
| | |   | | |-- label-details.xml
| | |   | | |-- labels.xml
| | |   | | |-- menu-substitutions.xml
| | |   | | |-- program-information.xml
| | |   | | `-- query-views.xml
| | |   |-- drilldowns.xml
| | |   |-- edtrf_mstr.xsd
| | |   |-- label-details.xml
| | |   |-- labels.xml
| | |   |-- nonsys-edtrf_mstr.xsd
| | |   |-- program-information.xml
| | |   `-- query-views.xml
| | | |-- qadadm-ch
| | |   |-- lbl_mstr.xml
| | | |-- qadadm-cs
| | |   |-- lbl_mstr.xml
| | | |-- qadadm-cz
| | |   |-- lbl_mstr.xml
| | | |-- qadadm-du
| | |   |-- lbl_mstr.xml
| | | |-- qadadm-fr
| | |   |-- lbl_mstr.xml
| | | |-- qadadm-ge
| | |   |-- lbl_mstr.xml
| | | |-- qadadm-it
| | |   |-- lbl_mstr.xml
| | | |-- qadadm-jp
| | |   |-- lbl_mstr.xml

```

```

| | | | -- qadadm-ko
| | | | `-- lbl_mstr.xml
| | | | -- qadadm-ls
| | | | `-- lbl_mstr.xml
| | | | -- qadadm-pl
| | | | `-- lbl_mstr.xml
| | | | -- qadadm-po
| | | | `-- lbl_mstr.xml
| | | | -- qadadm-tw
| | | | `-- lbl_mstr.xml
| | | | -- qaddb
| | | | | -- AlgoM.xsd
| | | | | -- deleted
| | | | | | -- field-help.xml
| | | | | | -- generalized-codes.xml
| | | | | | -- languages.xml
| | | | | | -- licenses.xml
| | | | | | -- menus.xml
| | | | | | -- messages.xml
| | | | | | `-- urls.xml
| | | | | -- field-help.xml
| | | | | -- generalized-codes.xml
| | | | | -- languages.xml
| | | | | -- licenses.xml
| | | | | -- menus.xml
| | | | | -- messages.xml
| | | | | -- nonsys-AlgoM.xsd
| | | | | `-- urls.xml
| | | | -- qaddb-ch
| | | | | -- lngd_det.xml
| | | | | -- mnd_det-mnt_det.xml
| | | | | `-- msg_mstr.xml
| | | | -- qaddb-cs
| | | | | -- lngd_det.xml

```

```

| | | | |-- mnd_det-mnt_det.xml
| | | | |-- msg_mstr.xml
| | | | |-- qaddb-cz
| | | | |-- lngd_det.xml
| | | | |-- mnd_det-mnt_det.xml
| | | | |-- msg_mstr.xml
| | | | |-- qaddb-du
| | | | |-- lngd_det.xml
| | | | |-- mnd_det-mnt_det.xml
| | | | |-- msg_mstr.xml
| | | | |-- qaddb-fr
| | | | |-- lngd_det.xml
| | | | |-- mnd_det-mnt_det.xml
| | | | |-- msg_mstr.xml
| | | | |-- qaddb-ge
| | | | |-- lngd_det.xml
| | | | |-- mnd_det-mnt_det.xml
| | | | |-- msg_mstr.xml
| | | | |-- qaddb-it
| | | | |-- lngd_det.xml
| | | | |-- mnd_det-mnt_det.xml
| | | | |-- msg_mstr.xml
| | | | |-- qaddb-jp
| | | | |-- lngd_det.xml
| | | | |-- mnd_det-mnt_det.xml
| | | | |-- msg_mstr.xml
| | | | |-- qaddb-ko
| | | | |-- lngd_det.xml
| | | | |-- mnd_det-mnt_det.xml
| | | | |-- msg_mstr.xml
| | | | |-- qaddb-ls
| | | | |-- lngd_det.xml
| | | | |-- mnd_det-mnt_det.xml
| | | | |-- msg_mstr.xml

```

```

| | | | -- qaddb-pl
| | | | | -- lngd_det.xml
| | | | | -- mnd_det-mnt_det.xml
| | | | `-- msg_mstr.xml
| | | | -- qaddb-po
| | | | | -- lngd_det.xml
| | | | | -- mnd_det-mnt_det.xml
| | | | `-- msg_mstr.xml
| | | `-- qaddb-tw
| | | | -- lngd_det.xml
| | | | | -- mnd_det-mnt_det.xml
| | | `-- msg_mstr.xml
| | | -- services
| | | | -- manifest.xml
| | | | `-- services.xml
| | | `-- strings
| | | | -- manifest.xml
| | | | `-- strings.en-US.xml
| | -- env
| | | `-- pro
| | | | `-- com
| | | | | -- qad
| | | | | -- shell
| | | | | -- report
| | | | | -- reports
| | | | | --
QAD_BulkItemPicklistCalculation.meta.all
| | | | | --
QAD_BulkItemPicklistCalculation.meta.xml
| | | | | -- QAD_BulkItemPicklistCalculation.p
| | | | | -- QAD_BulkItemPicklistPrint.meta.all
| | | | | -- QAD_BulkItemPicklistPrint.meta.xml
| | | | | -- QAD_BulkItemPicklistPrint.p
| | | | | --
QAD_ComparativeCostElementReport.meta.xml

```



```

| | | | `-- fscarmto.p
| | | | |-- mg
| | | | `-- mgpmrp3.p
| | | | |-- pp
| | | | |-- pppliq.p
| | | | |-- ppplmt1.p
| | | | |-- ppplmta.p
| | | | `-- ppptmta.p
| | | | `-- px
| | | | `-- pxunref.p
| | |-- 1-2-with-tam2-1
| | | `-- src
| | | |-- pxtools.p
| | | `-- us
| | | |-- fs
| | | | `-- fscarmto.p
| | | |-- mg
| | | | `-- mgpmrp3.p
| | | |-- pp
| | | | |-- pppliq.p
| | | | |-- ppplmt1.p
| | | | |-- ppplmta.p
| | | | `-- ppptmta.p
| | | | `-- px
| | | | `-- pxunref.p
| | |-- 2-0-with-saq2-7
| | | `-- pa016.brwx
| | |-- 2-0-with-tam2-1
| | | `-- src
| | | |-- pxtools.p
| | | `-- us
| | | |-- fs
| | | | `-- fscarmto.p
| | | |-- mg

```

```

| | | | `-- mgpmrp3.p
| | | | |-- pp
| | | | |-- pppli.q.p
| | | | |-- ppplmt1.p
| | | | |-- ppplmta.p
| | | | `-- ppptmta.p
| | | | `-- px
| | | | `-- pxunref.p
| | | `-- 2-0-with-tam2-2
| | | `-- src
| | | | |-- pxtools.p
| | | | `-- us
| | | | |-- fs
| | | | | `-- fscarmto.p
| | | | |-- mg
| | | | | `-- mgpmrp3.p
| | | | |-- pp
| | | | | |-- pppli.q.p
| | | | | |-- ppplmt1.p
| | | | | |-- ppplmta.p
| | | | | `-- ppptmta.p
| | | | `-- px
| | | | `-- pxunref.p
| |-- java
| | |-- productionorder-api-src.jar
| | |-- productionorder-api.jar
| | |-- productionorder-impl-src.jar
| | `-- productionorder-impl.jar
| |-- qdoc
| | `-- qxi
| | | |-- datfiles
| | | | |-- maintainItemProductionLine.dat
| | | | |-- maintainProductionLine.dat
| | | | `-- maintainWorkCenter.dat

```

```

| | | -- descriptors
| | |   |-- QADEE
| | |     |-- productionorder-qdoc.xml
| | | -- events
| | |   |-- QADEE
| | |     |-- rwwcmt-ERP3_2.xml
| | |     |-- splnmt-ERP3_2.xml
| | |     |-- woiplmt-ERP3_1.xml
| | |-- schemas
| | |   |-- QADEE
| | |     |-- custom
| | |     |-- maintainComponentPickingData-ERP3_1.xsd
| | |     |-- maintainItemInventoryData-ERP3_3.xsd
| | |     |-- maintainItemMaster-ERP3_9.xsd
| | |     |-- maintainItemProductionLine-ERP3_1.xsd
| | |     |-- maintainItemSiteInventory-ERP3_3.xsd
| | |     |-- maintainPOShipperReceipt-ERP3_4.xsd
| | |     |-- maintainPOShipperReceiptResponse-ERP3_4.xsd
| | |     |-- maintainPOShipperUnloading-ERP3_4.xsd
| | |     |-- maintainPOShipperUnloadingResponse-ERP3_4.xsd
| | |     |-- maintainProductionLine-ERP3_2.xsd
| | |     |-- maintainProductionOrder-ERP3_1.xsd
| | |     |-- maintainWorkCenter-ERP3_2.xsd
| | |     |-- receivePurchaseOrder-ERP3_4.xsd
| | |     |-- recordIssueComponent-ERP3_1.xsd
| | |     |-- recordIssueComponent-ERP3_2.xsd
| | |     |-- recordIssueComponentByPack-ERP3_1.xsd
| | |     |-- recordIssueComponentByPack-ERP3_2.xsd
| | |     |-- recordManualAllcocation-ERP3_1.xsd
| | |     |-- recordMove-ERP3_1.xsd
| | |     |-- recordOperationActivity-ERP3_1.xsd
| | |     |-- recordOperationActivity-ERP3_3.xsd
| | |     |-- recordOperationLabor-ERP3_1.xsd
| | |     |-- recordOperationLabor-ERP3_2.xsd

```



```

| | |-- QAD_ProductionOrderAllocate.xml
| | |-- QAD_ProductionOrderPicklistPrint.xml
| | |-- QAD_ProductionOrderReleasePrint.xml
| | |-- QAD_ProductionOrderSheetPrint.xml
| | |-- QAD_ProductionPicklistReversal.xml
| | |-- QAD_ProductionPicklistShortageUpdate.xml
| | |-- QAD_ProductionTestReport.xml
| | |-- QAD_ProductivityByEmployeeRpt.xml
| | |-- QAD_ProductivityByItemRpt.xml
| | |-- QAD_ProductivityByWorkCtrRpt.xml
| | |-- QAD_SerialBookingByProdOrderReport.xml
| | |-- QAD_SerializedInventoryReport.xml
| | |-- QAD_SubShipperContainerReport.xml
| | |-- QAD_SubcontractItemStatusReport.xml
| | |-- QAD_TestRecordsByItemReport.xml
| | |-- QAD_WIPAdjustmentsAnalysisRpt.xml
| | |-- QAD_WIPCostAsOfDateReport.xml
| | |-- QAD_WIPStatusReport.xml
| | |-- QAD_WORecipePrint.xml
| | |-- QAD_WorkCenterDispatchReport.xml
| | |-- QAD_WorkCenterNonWorkdayUpdate.xml
| | |-- QAD_WorkCenterUtilizationRpt.xml
| | |-- QAD_WorkOrderCostReport.xml
| | |-- QAD_WorkOrderReleasePrint.xml
| | |-- QAD_WorkOrderRoutingReport.xml
| | |-- QAD_WorkOrderStatusReport.xml
| | |-- QAD_WorkOrderWIPCostReport.xml
| | |-- QAD_ZeroOpenQtyOrderClose.xml
| | `-- branches
| |     |-- 2017
| |         |-- QAD_MultipleWOReleasePrint.xml
| |         `-- QAD_TestRecordsByItemReport.xml
| |-- schema
| | |-- module.df

```

```
| | `-- progress
| |     |-- qadadm
| |     `-- qaddb
| |         |-- qaddb.df
| |         `-- table.lst
| `-- ws
`-- yab
    |-- config
    `-- prod-order.properties
```

208 directories, 1619 files

Product Information Resources

QAD offers a number of online resources to help you get more information about using QAD products.

[QAD Forums \(community.qad.com\)](https://community.qad.com)

Ask questions and share information with other members of the user community, including QAD experts.

[QAD Knowledgebase \(knowledgebase.qad.com\)*](https://knowledgebase.qad.com)

Search for answers, tips, or solutions related to any QAD product or topic.

[QAD Document Library \(documentlibrary.qad.com\)](https://documentlibrary.qad.com)

Get browser-based access to user guides, release notes, training guides, and so on; use powerful search features to find the document you want, then read online, or download and print PDF.

[QAD Learning Center \(learning.qad.com\)*](https://learning.qad.com)

Visit QAD's one-stop destination for all courses and training materials.

*Log-in required

