

# REMANUFACTURING

## Benefits

**Achieve full serialization for as-built documentation**

**Optimization of production management in terms of schedule and material tracking**

**Improve supply chain governance and visibility**

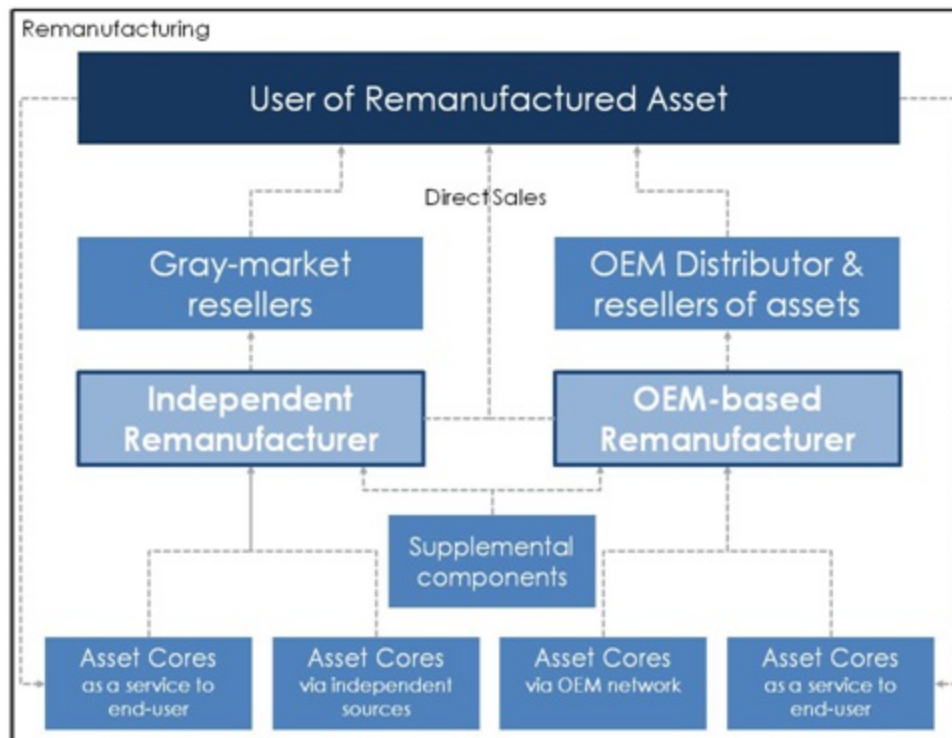
**Integrate quality directly into primary business processes**

**Digitize management of customer and supplier orders through EDI**

**Financial visibility into core, component and production costing**

QAD offers a unique solution for remanufacturers that includes full-featured QAD [Cloud ERP](#) and related capabilities which help remanufacturers adapt to changing business conditions, improve forecast accuracy, drive operational efficiency and improve Delivery In Full On Time (DIFOT), all while meeting their customers' demands for quality, genealogy and serialized tracking.

## Remanufacturing Value Chain



Remanufacturers may be independent or work as an authorized agent of an OEM. The asset core flow into a remanufacturer can be via the asset end-user or via independent source.

Component parts, other supplemental material and MRO materials are consumed during the remanufacturing process. Remanufactured assets sell via gray market resellers or through the channels of the original OEM.

Key capabilities include collaborative production management, demand planning, supply chain execution, quality management and global financials. These and other capabilities help remanufacturers control supporting processes, reduce risk and modernize operations that align with business strategy.

**Increase capacity** through better material planning and handling

**Improve DIFOT** through better supply chain insight and accurate inventory tracking

**Reduce manual costs and errors** by automating material tracking

**Increase inventory turns, reducing inventory** via sophisticated collaborative scheduling workbenches that incorporate demand and forecast changes as they happen

## Remanufacturing Solution Overview

Remanufacturing is based on a coordinated process of core receipt, core evaluation, material acquisition unique to that core, operational planning and ultimately production tracking and accounting. Based on the diverse range of core permutations and conditions, remanufacturing requires unprecedented system flexibility. Dynamic production processes, coordinated supply chain planning systems, execution systems and IT infrastructure flexibility are key contributors to successful remanufacturing and delivery of revitalized equipment.

Remanufacturing is most often done in relatively low volumes and each production order may even be associated with a single returning core. The production process includes a fair amount of manual movement of the material between manual assembly processes that often requires product and production order specific work instructions. All this processing becomes more complicated based on the corresponding sophistication of remanufactured product.

Products may include multiple electronic subsystems, hydraulic, pneumatic or mechanical motion subsystems. The production orders often require the kitting of components and frequently require both mechanical and electrical integrity checks as part of the processing. The accurate identification and tracking of the components of the disassembled core and the associated replacement components is imperative for the efficient and effective delivery on each production order.

The complexity of the BOM and the potentially high level of variation require a sophisticated integrated approach to planning and execution functions. Remanufacturers closely monitor specific operational metrics and expect performance that allows them to differentiate. Key metrics include DIFOT, Capacity Utilization, Production Downtime, Work-in-Process Levels, Unit Costing and Reduced Manufacturing Cycle Time.

The QAD solution offers a complete approach to address the complex processes and innovation needed by remanufacturers. The following are the key capabilities of the solution that help manufacturers successfully address their unique challenges and provide opportunities to continuously improve performance:

### Item level serialization

[QAD QMS \(Quality Management System\)](#)

[QAD Automation Solutions](#) – Shop Floor Data Collection and Label Printing

[Planning and Scheduling Workbenches](#)

[QAD DSCP \(Demand and Supply Chain Planning\)](#)

[QAD Supplier Portal](#) - Supplier Management

### Lot Trace Workbench

[QAD BI \(Business intelligence\)](#)

[QAD Cloud EDI](#)

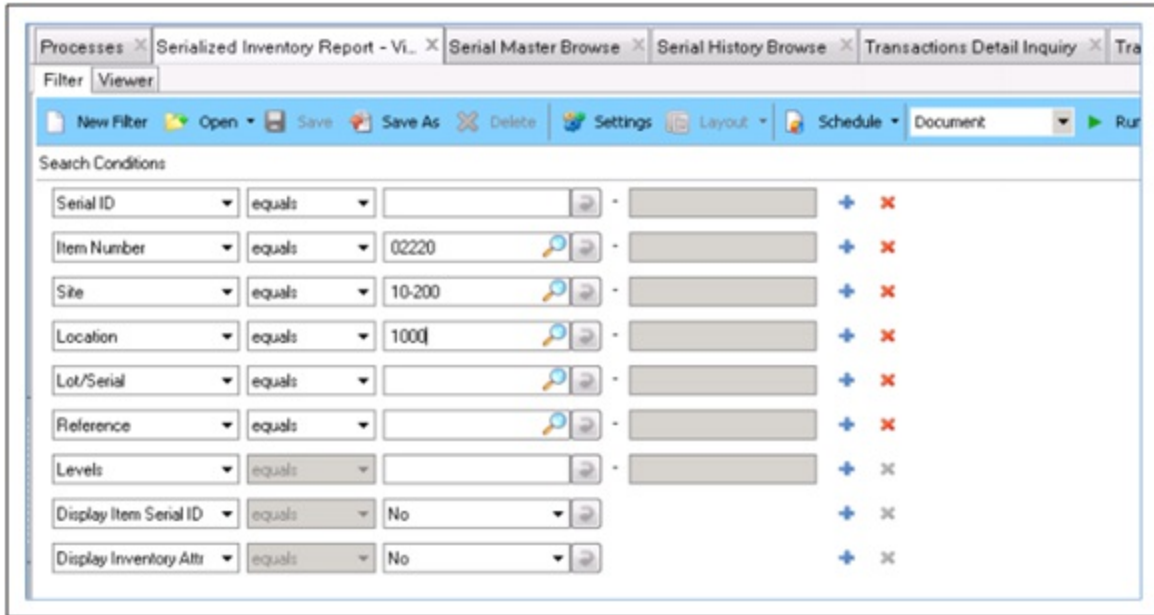
Overviews of the first three solutions areas listed above follow. For information about the rest of the solution areas, please visit [QAD.com](http://QAD.com).

## Item Level Serialization

Product complexity and associated product revision levels drive the requirement for unit level, electronic serialization needed by remanufacturers. While driven by the expectations of their customers, remanufacturers are also committed to the business benefit that can come with better visibility and overall operational improvement.

The QAD Item Level Serialization solution **addresses remanufacturers' robust material traceability requirements**. Traceability can extend to final assemblies tied to subassemblies or lot identifiers for sourced components or unique core identifiers. **Information about products and inventory movements stored in each of these logistic units are all captured and accessible through a serial ID.**

### Serialized Inventory Report



## QAD QMS (Quality Management System)

Quality control in a remanufacturing environment is an integral part of the operation. Remanufacturers typically have electrical and other system inspections at varying stages of the assembly process to assure satisfactory functionality before additional handling and incremental value-add operations.

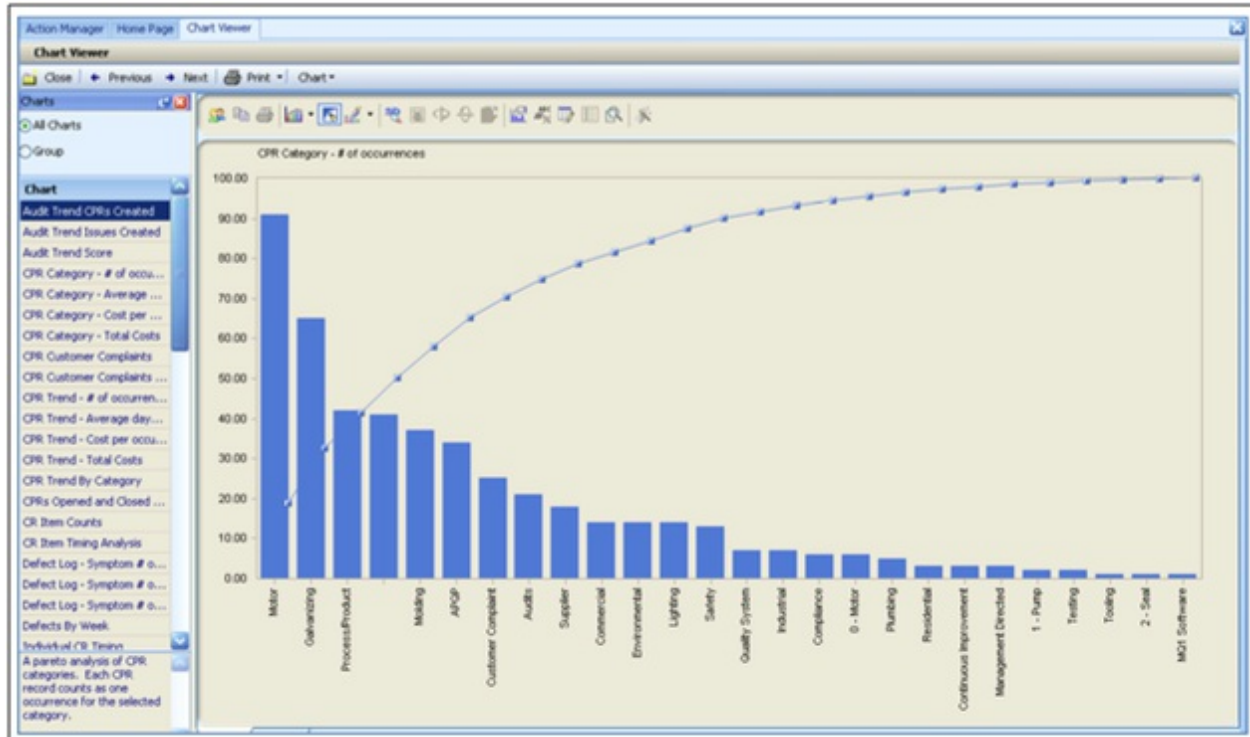
QAD Item Attributes and Quality Control allow for attributes that are tracked at the lot level when an item is received from a supplier. Item Attributes supports complete traceability at the lot and attribute level for anything bought, sold or produced.

QAD QMS further **supports the integration of quality planning efforts whether through formal APQP or other manufacturer-developed standard operating procedures**. QAD QMS supports the management of quality information in terms of both specifications and supporting documentation. This integration allows remanufacturers to integrate related process data, automate required business processes and comply with design and customer specifications.

QAD QMS offers a complete suite of automation tools to manage quality systems, including:

- Document Control for the central storage and management of controlled documents, including approval workflow, archiving and audit trail
- Complaint handling to comply with GMP regulations
- CAPA/NCR to provide an automated closed loop solution for problem resolution
- Employee Training for the management and qualification of key personnel
- Audits to support both internal and external auditing
- Inspection & Statistical Process Control to document and automate processes around inspections

### QAD QMS Defect Tracking Analytics



## QAD Automation Solutions

QAD Automation Solutions improves manufacturers' material transactional effectiveness by aligning ERP with material processes. QAD Automation Solutions includes two primary capabilities.

**Data Collection** captures material and production data through simplified ERP transactions using a mobile device such as a radio frequency (RF) scanner, tablet or a stationary shop floor personal computer or terminal.

**Label Printing Services** route and print labels associated with material and production transactions based on manufacturer, supplier and customer formats and rules. The services support any label format and any printer and are GS1 and 2D compliant.

QAD Automation Solutions acts as a highly configurable set of capabilities that requires no coding to be applied to a wide variety of [manufacturing](#) environments, specifically:

**Transaction Development Toolset** reduces customizations by simplifying the development of material and production transactions through the configuration of QAD Service Interface.

**Transaction Library** provides out-of-the-box transactions for inbound, outbound, production, inventory management and packaging for ERP functionality. The library extends to QAD Enterprise Asset Management.

**Transaction Processing Engine** ensures failure free transaction processing through QAD core SI-API processing and interactive record locking management.

**Transaction Linking** combines multiple transactions to create a unified and simplified transaction, aligning with material handling and production processes.

**Label Mapping/Routing Toolset** easily maps to QAD material and production data to select the right label format and to print to the correct printer.

### Automation Solutions Integrated Data Collection and Label Printing



For more information on how the QAD Remanufacturing solution can help your company, please contact QAD at +1-805-566-6100 or email [info@qad.com](mailto:info@qad.com).